

Community Strategies for Improving Health in Allentown: The Lens of Diabetes Health Disparities

Michael Irvin

Autumn Kieber-Emmons MD, MPH

Carolyn Peterseim MD

Follow this and additional works at: <https://scholarlyworks.lvhn.org/research-scholars>



Part of the [Medicine and Health Sciences Commons](#)

This Poster is brought to you for free and open access by LVHN Scholarly Works. It has been accepted for inclusion in LVHN Scholarly Works by an authorized administrator. For more information, please contact LibraryServices@lvhn.org.

Community Strategies for Improving Health in Allentown: The Lens of Diabetes Health Disparities

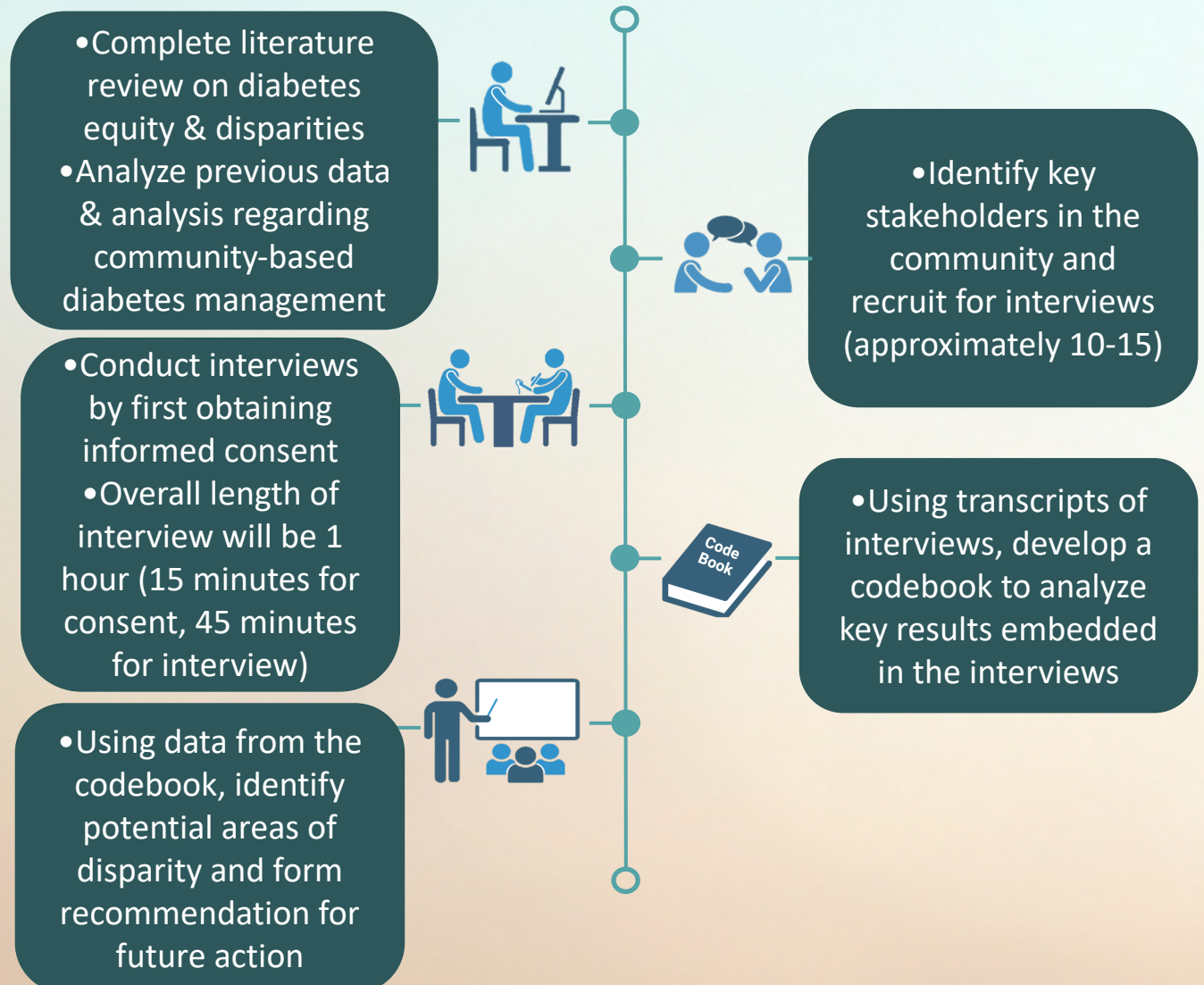
Michael Irving, Dr. Autumn Kieber-Emmons MD MPH, Dr. Carolyn Peterseim MD

BACKGROUND

- Diabetes is a prevalent and costly concern in Pennsylvania, affecting approximately 11.1% of the adult population and cumulating approximately \$9.0 billion in medical expenses per year¹.
- The prevalence of diabetes varies within different regions of the state, though this study specifically focuses on Lehigh County, where diabetes is most prevalent in downtown Allentown, Bethlehem, and north Whitehall in zip codes 18102, 18109, 18052, and 18018.

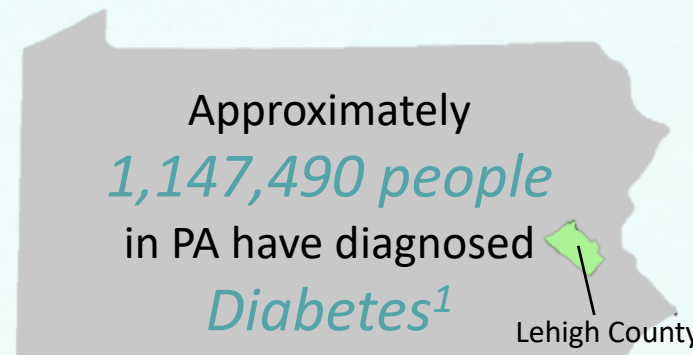
The purpose of this study is to identify gaps in diabetes care in Lehigh County and to recommend strategies for improving the prevention, diagnosis and management of diabetes.

METHODS



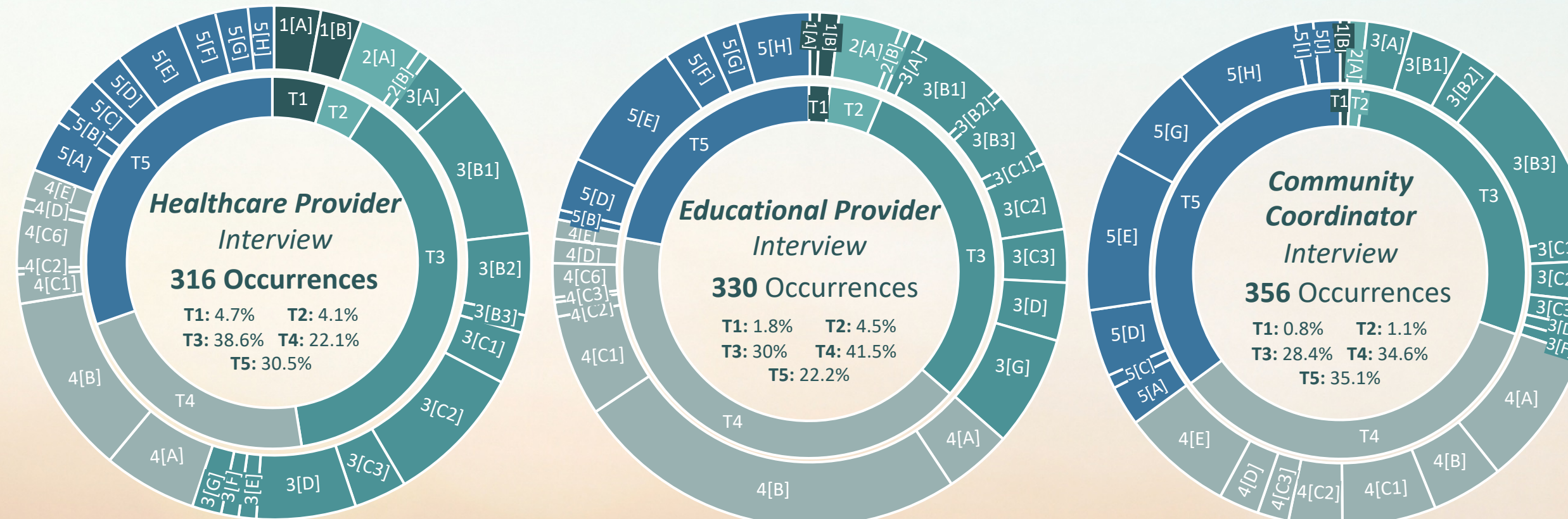
Lehigh Valley Health Network, Allentown, Pennsylvania

Theme 1: Holistic Health Perspective	Theme 2: Personalized Risk Awareness	Theme 3: Health Systems	Theme 4: Health Behaviors	Theme 5: Socioeconomic Factors
<ul style="list-style-type: none"> •Code [1A]: Physical Health Implications of Diabetes •Code [1B]: Psychological Health Implications of Diabetes 	<ul style="list-style-type: none"> •Code [2A]: Acknowledgment of Applied Risk •Code [2B]: Genetic Factors 	<ul style="list-style-type: none"> •Code [3A]: Importance for Healthcare Systems •Code [3B]: Networking <ul style="list-style-type: none"> •[3B]1: Outpatient •[3B]2: Inpatient •[3B]3: Community •Code [3C]: Access <ul style="list-style-type: none"> •[3C]1: Inpatient •[3C]2: Outpatient •[3C]3: Medication Medical Supplies •Code [3D]: Variability •Code [3E]: Informatics •Code [3F]: Funding •Code [3G]: Technology and Medical Devices 	<ul style="list-style-type: none"> •Code [4A]: Desire to seek treatment & QOL consideration •Code [4B]: Education •Code [4C]: Lifestyle <ul style="list-style-type: none"> •[4C]1: Diet & Food •[4C]2: Exercise •[4C]3: Alcohol, Drugs, and Nicotine •[4C]4: Hygiene •[4C]5: Stress •[4C]6: Medications •[4C]7: Criminal Background •Code [4D]: Prevention •Code [4E]: Community Building 	<ul style="list-style-type: none"> •Code [5A]: Income Level & Social Class •Code [5B]: Occupational Factors •Code [5C]: Housing Conditions •Code [5D]: Food Security and Access •Code [5E]: Community Resources •Code [5F]: Insurance •Code [5G]: Geographics •Code [5H]: Cultural and Language Factors •Code [5I]: Race •Code [5J]: Age •Code [5K]: Gender



RESULTS

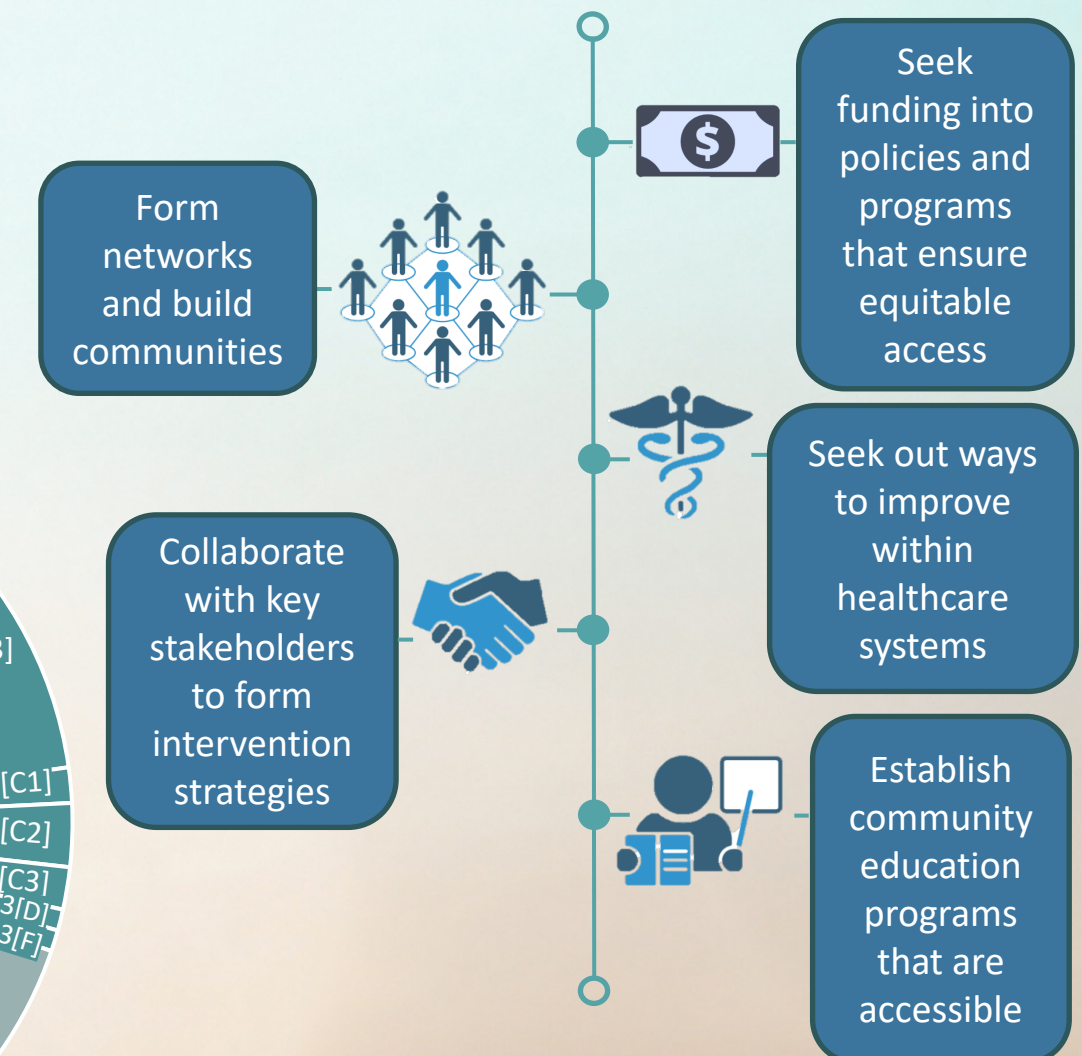
3 Interviews Coded with More Pending



DISCUSSION

- The preliminary results from the interviews in the study show not only significant sign of disparities in diabetes care, but also a wide range of issues that are believed to be impacting health equity in Lehigh County. There are also prevalent variations in codes seen by the participants depending on their respective stake in diabetes prevention, diagnosis, and management within Lehigh County.
- The preliminary results of the study have shown a need for targeted population-based public health interventions to improve diabetes care in Allentown, which will guide future action towards successfully addressing these gaps.

FUTURE ACTION



References

Scan this QR Code for references



Expanded Results

Scan this QR Code for expanded results



Acknowledgements

Scan this QR Code for acknowledgements

LVHN.org

