

MASTER

13/13 machinefabriek

herbestemming van de machinefabriek te Vlissingen

Weekers, Y.G.F.M.

Award date:
2008

[Link to publication](#)

Disclaimer

This document contains a student thesis (bachelor's or master's), as authored by a student at Eindhoven University of Technology. Student theses are made available in the TU/e repository upon obtaining the required degree. The grade received is not published on the document as presented in the repository. The required complexity or quality of research of student theses may vary by program, and the required minimum study period may vary in duration.

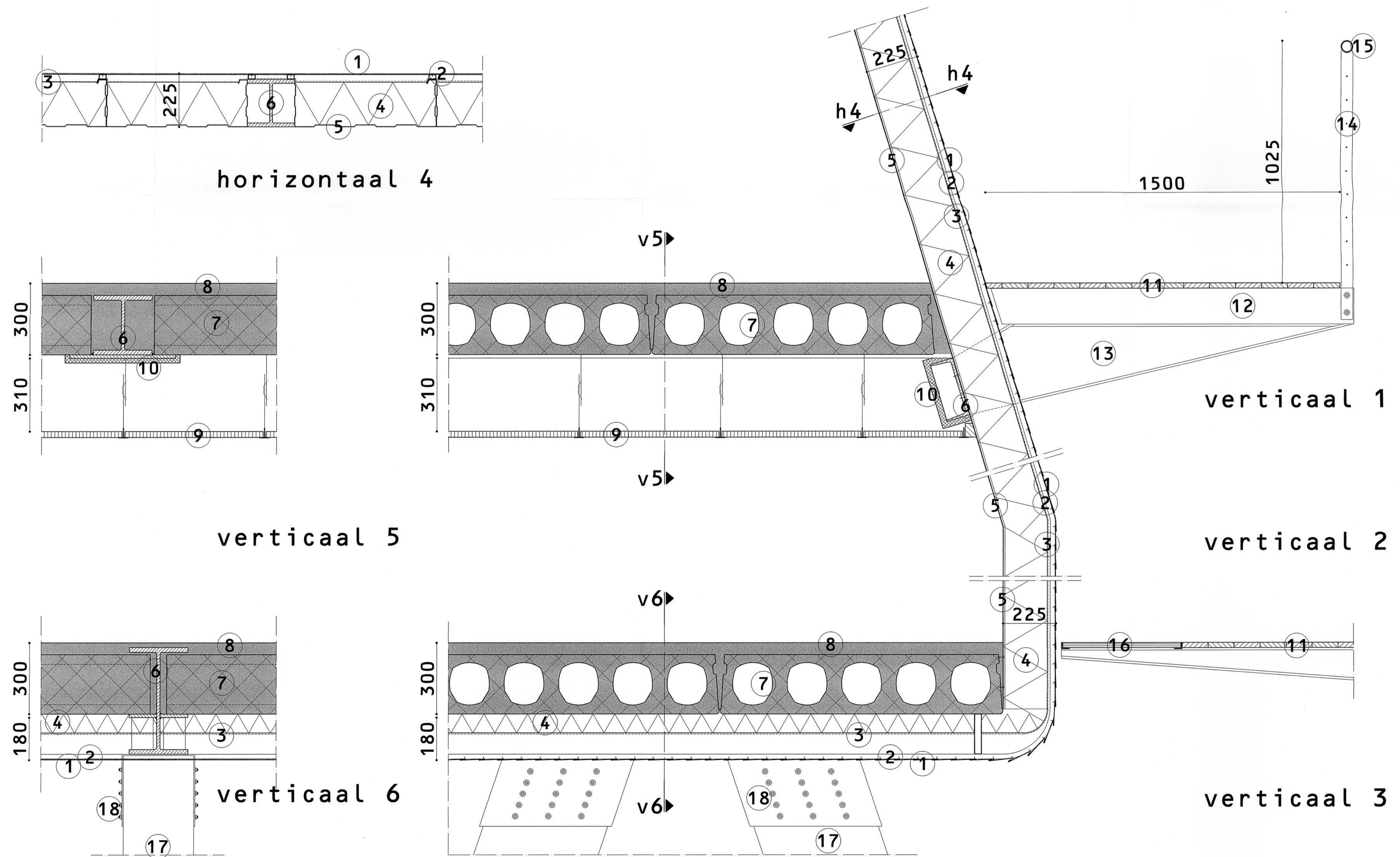
General rights

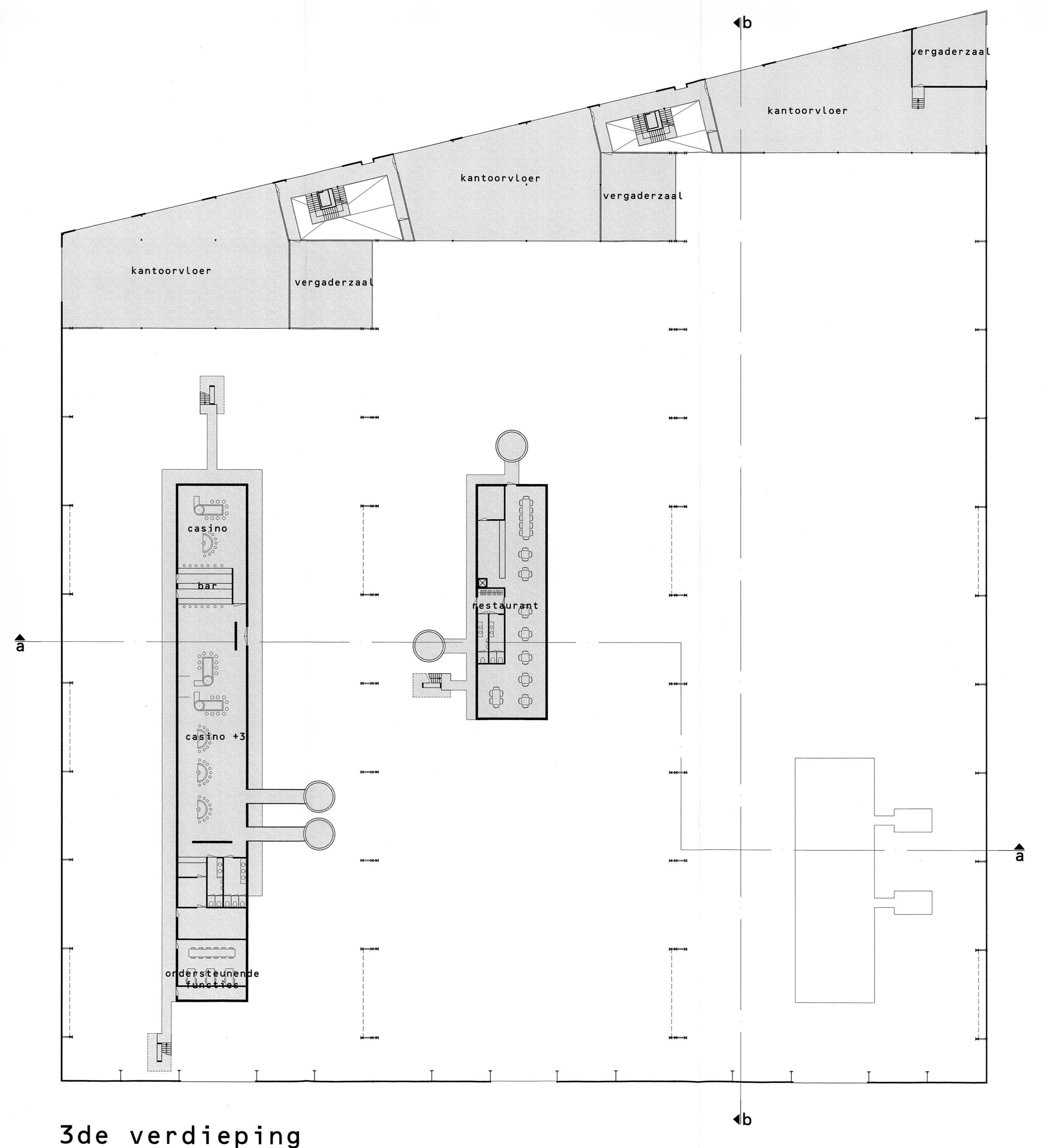
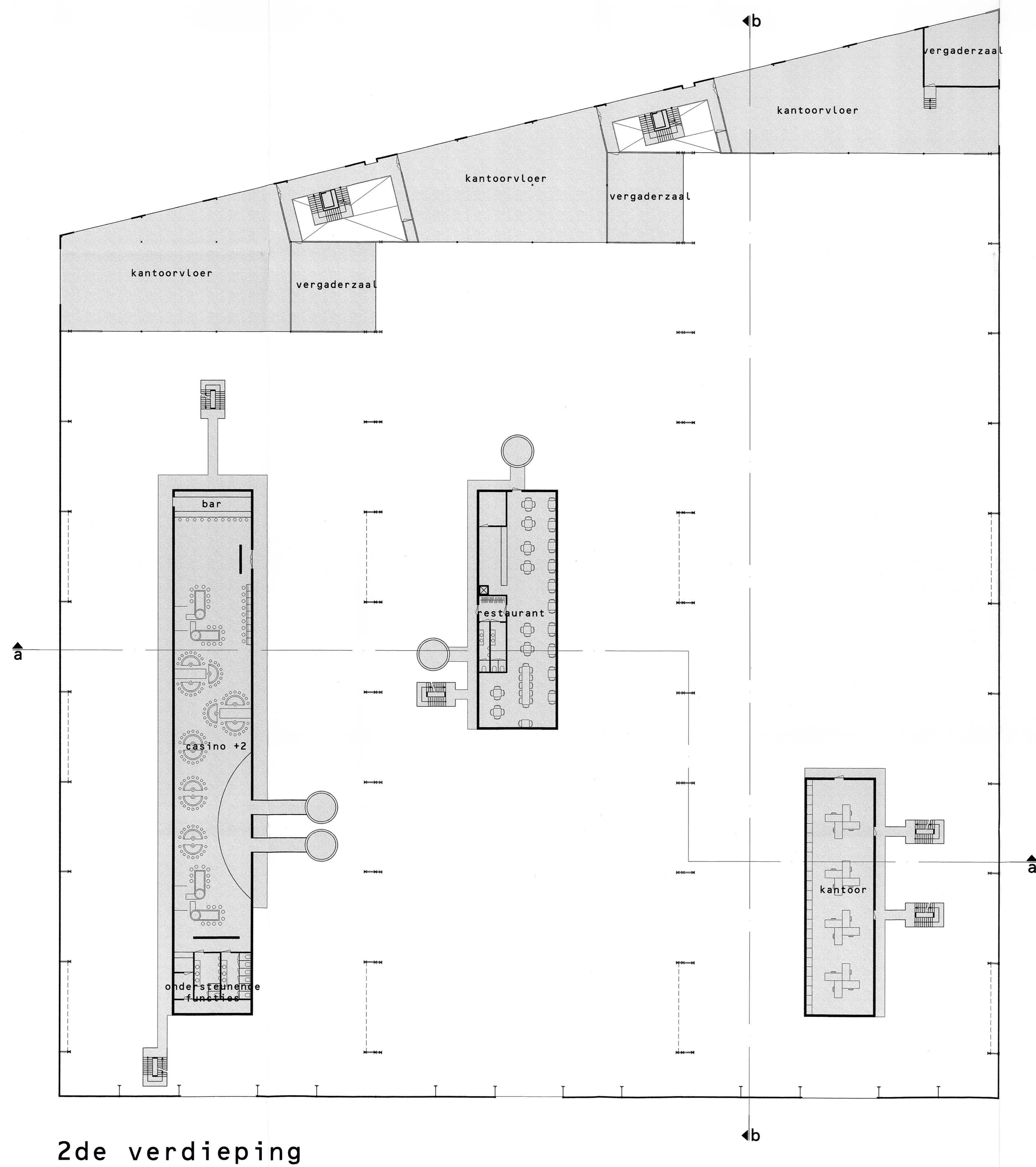
Copyright and moral rights for the publications made accessible in the public portal are retained by the authors and/or other copyright owners and it is a condition of accessing publications that users recognise and abide by the legal requirements associated with these rights.

- Users may download and print one copy of any publication from the public portal for the purpose of private study or research.
- You may not further distribute the material or use it for any profit-making activity or commercial gain

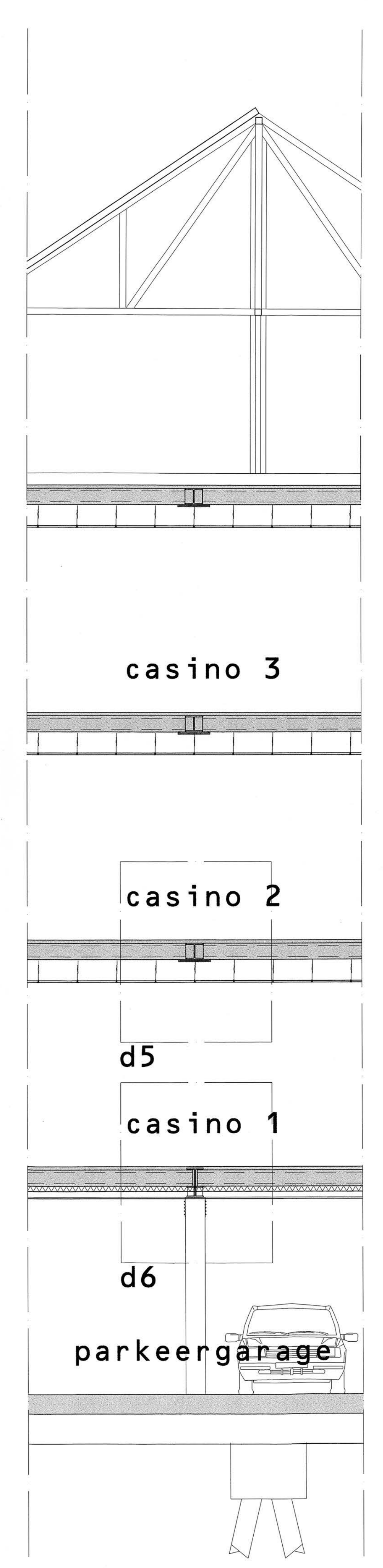
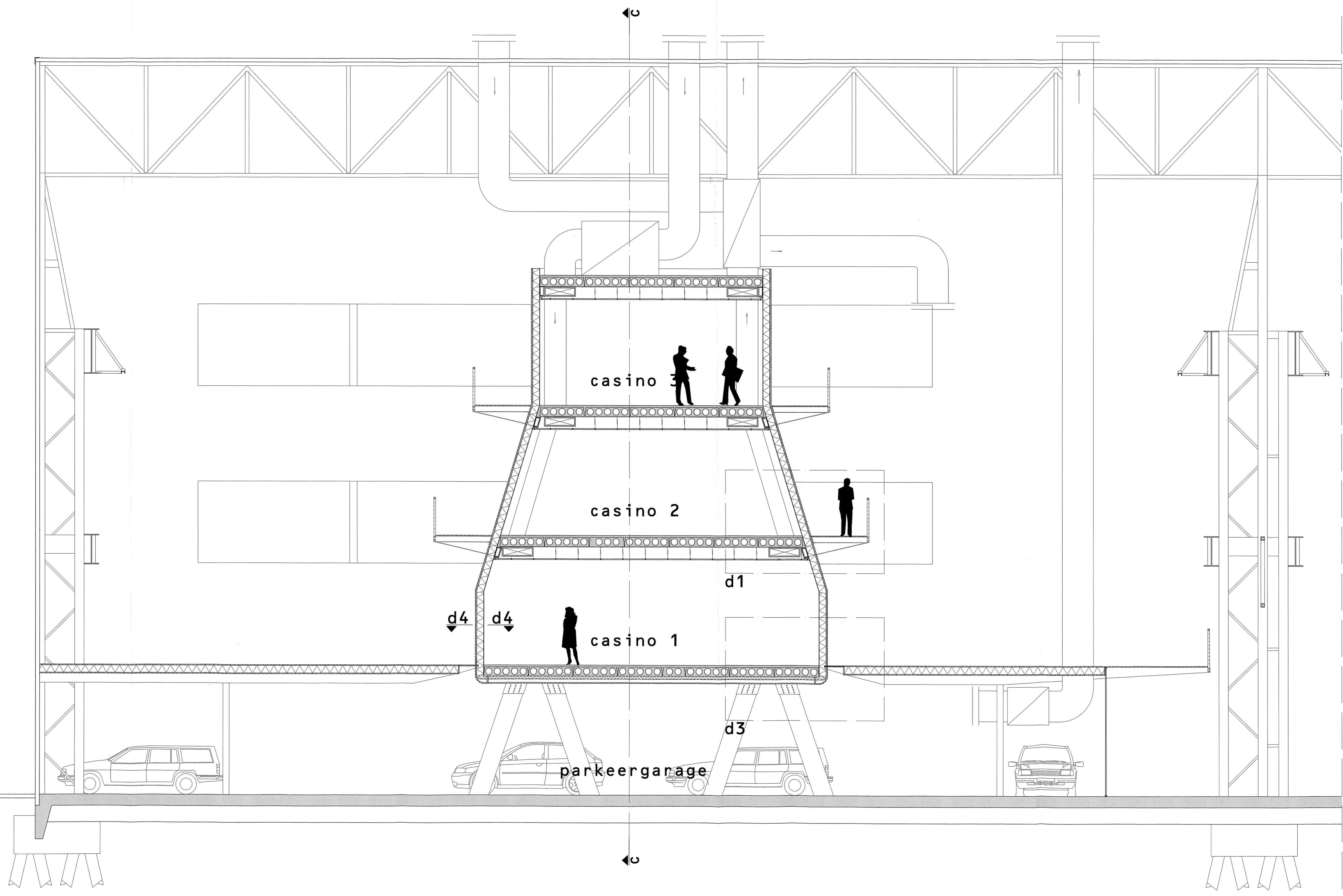
Legenda

- 1 koperen gevelbekleding
- 2 gegalvaniseerd stalen regelwerk
- 3 dampremmende laag
- 4 brandwerende steenwol isolatie
- 5 stalen binnendozen (verticaal)
- 6 staalconstructie gegalvaniseerd
- 7 kanaalplaatvloer
- 8 afwerkvloer
- 9 verlaagd systeemplafond
- 10 brandwerende bekleding
- 11 houten planken
- 12 houten balk
- 13 stalen console
- 14 r.v.s. staaldraad
- 15 r.v.s. rondprofiel
- 16 glazen plaat (gehard glas)
- 17 gelamineerde houten kolommen
- 18 stalen schoenen





tweede & derde verdieping 1 : 200



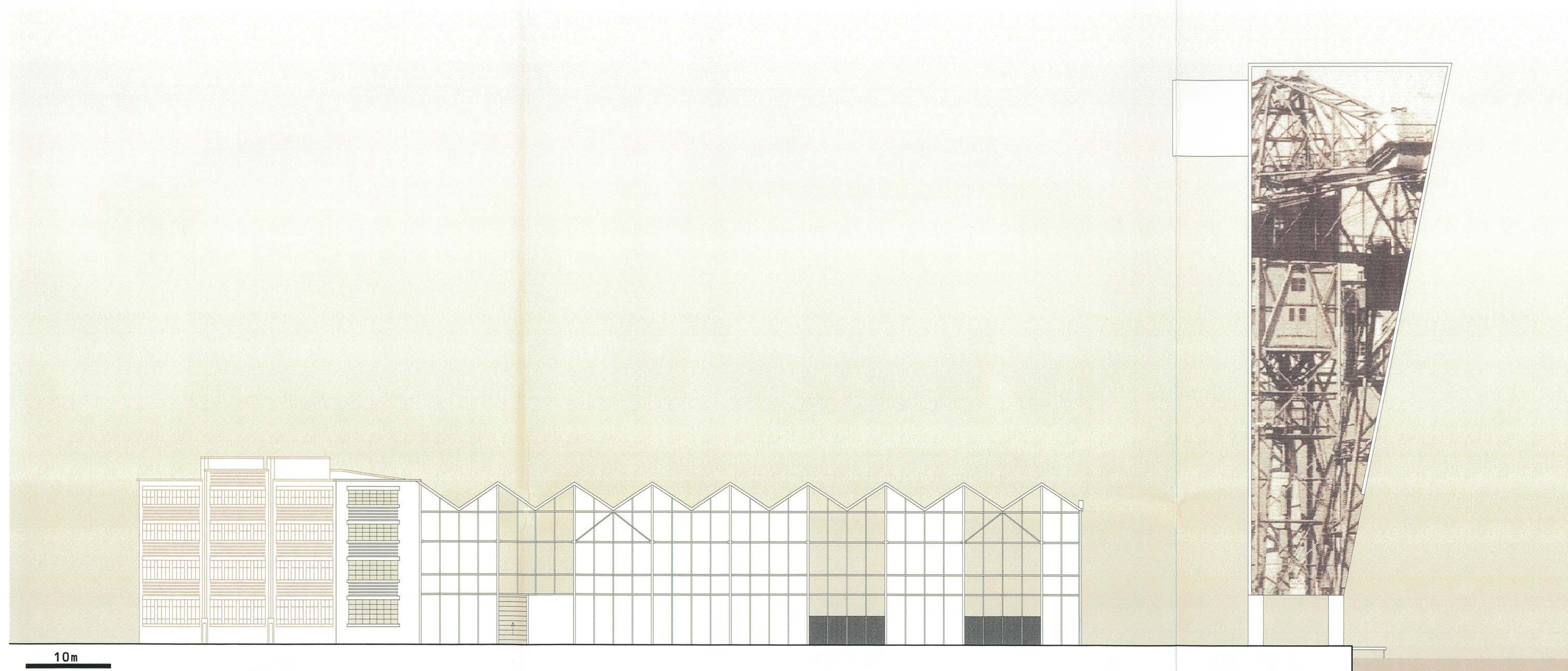
doorsnede casino

doorsnede c-c

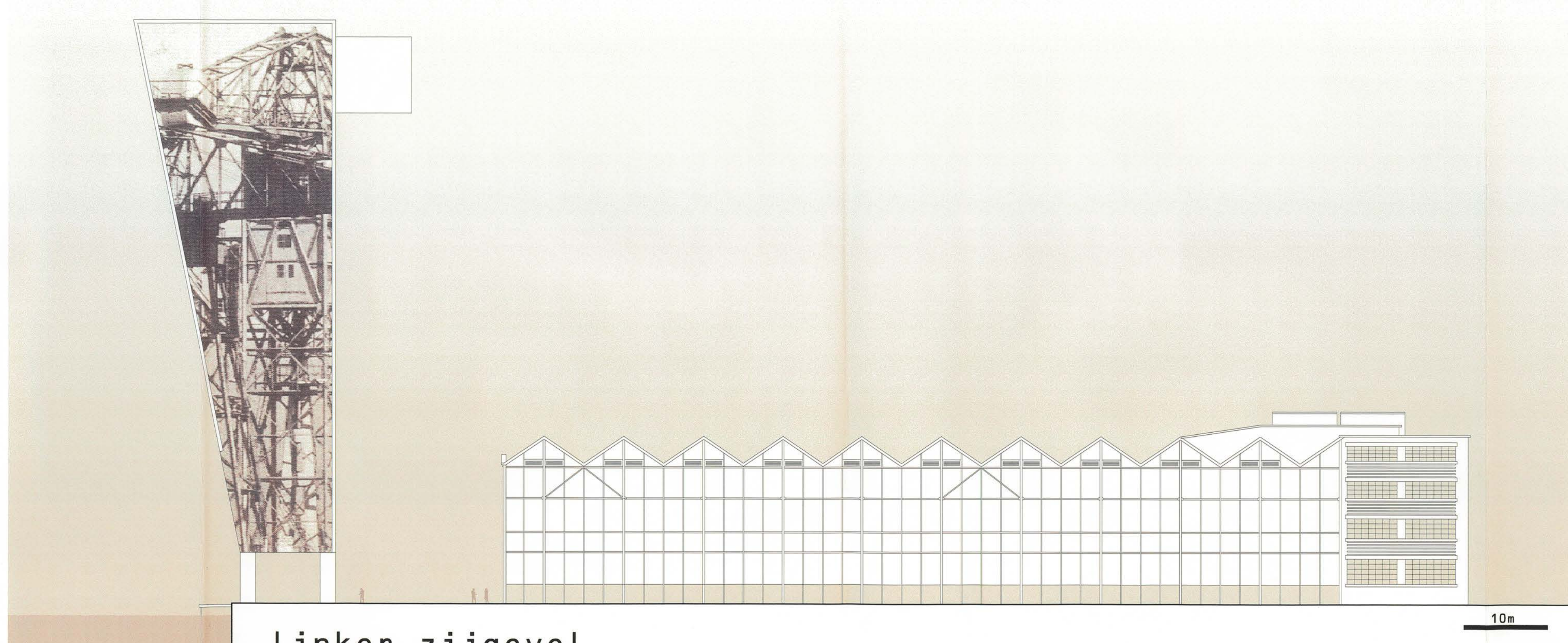
doorsnede casino 1 : 50



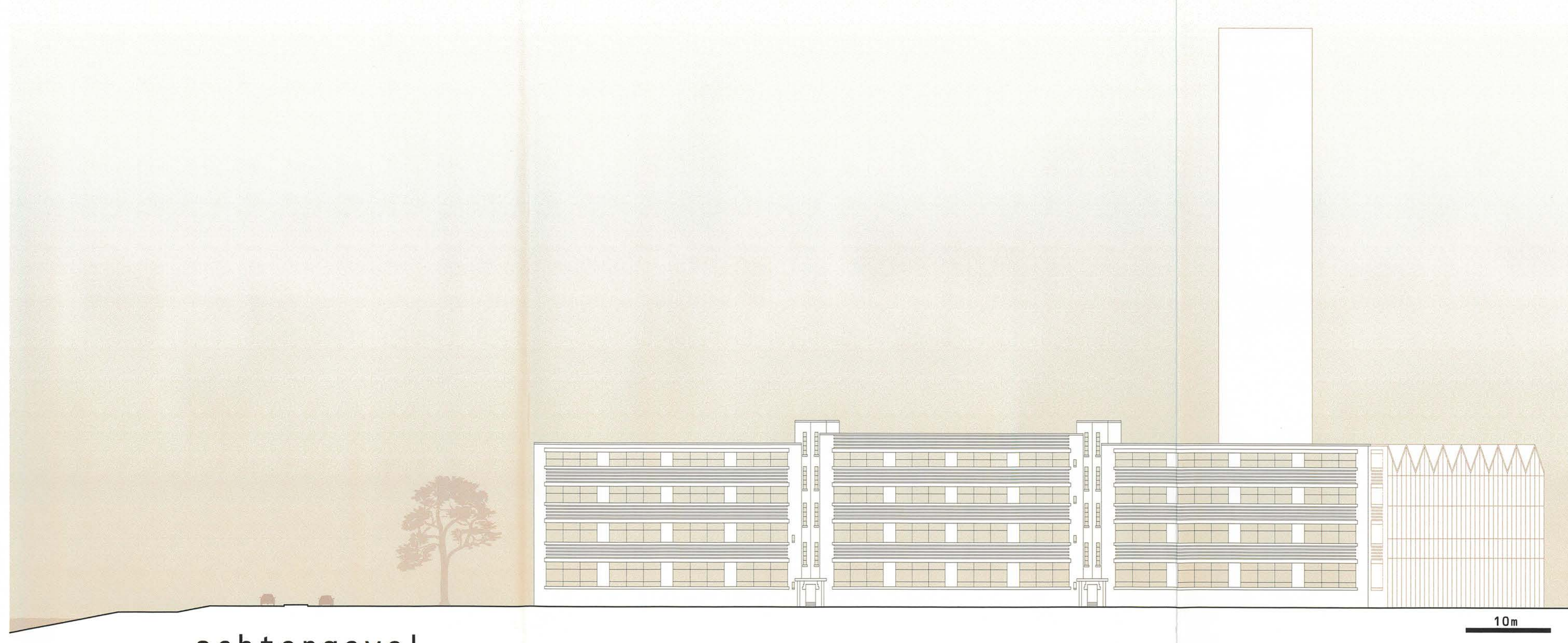
voorgevel



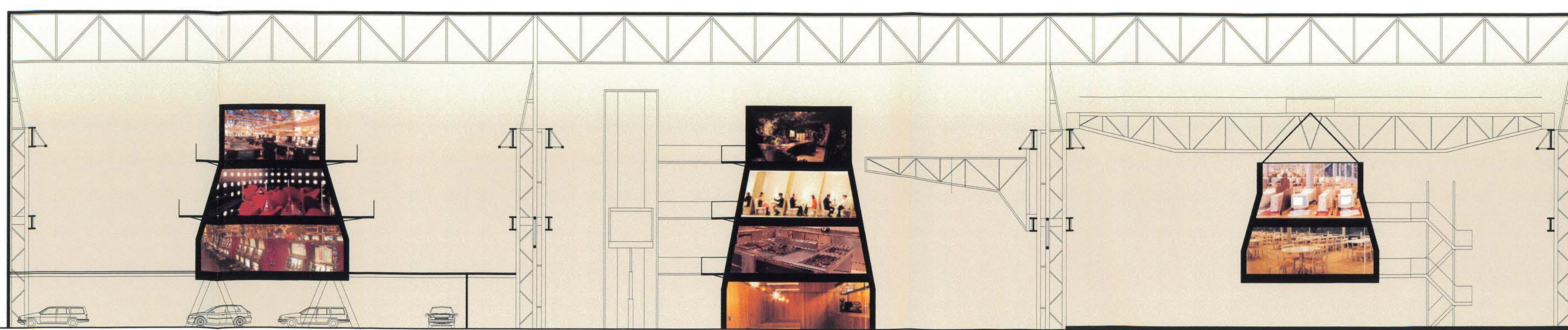
rechter zijgevel



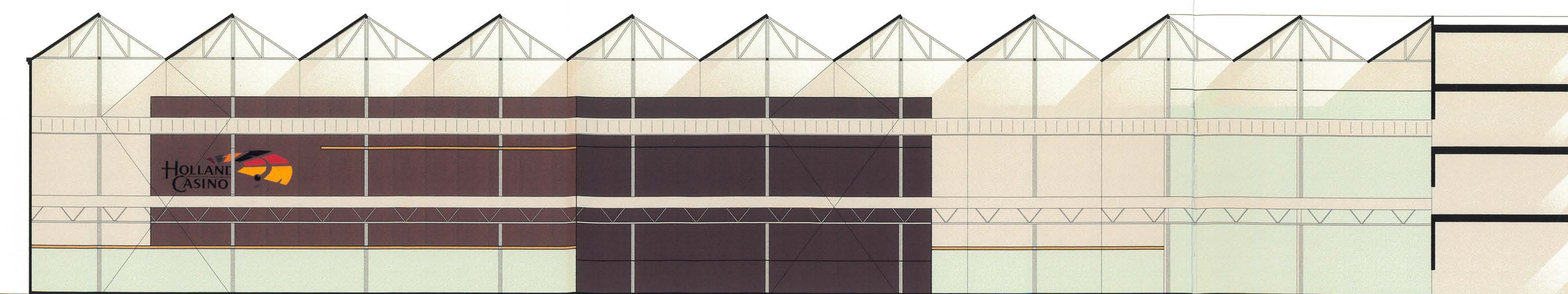
linker zijgevel



achtergevel

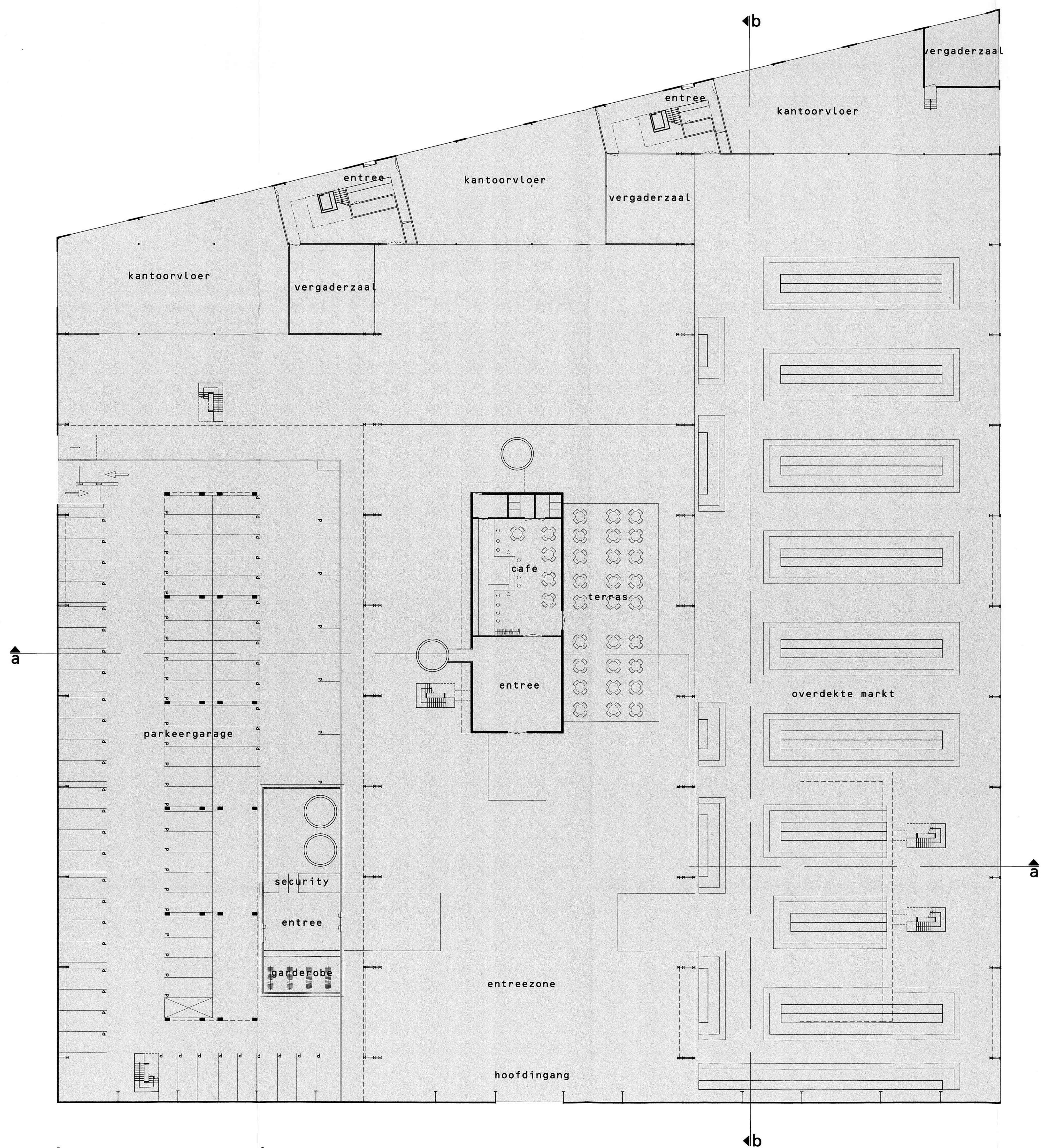


doorsnede a-a

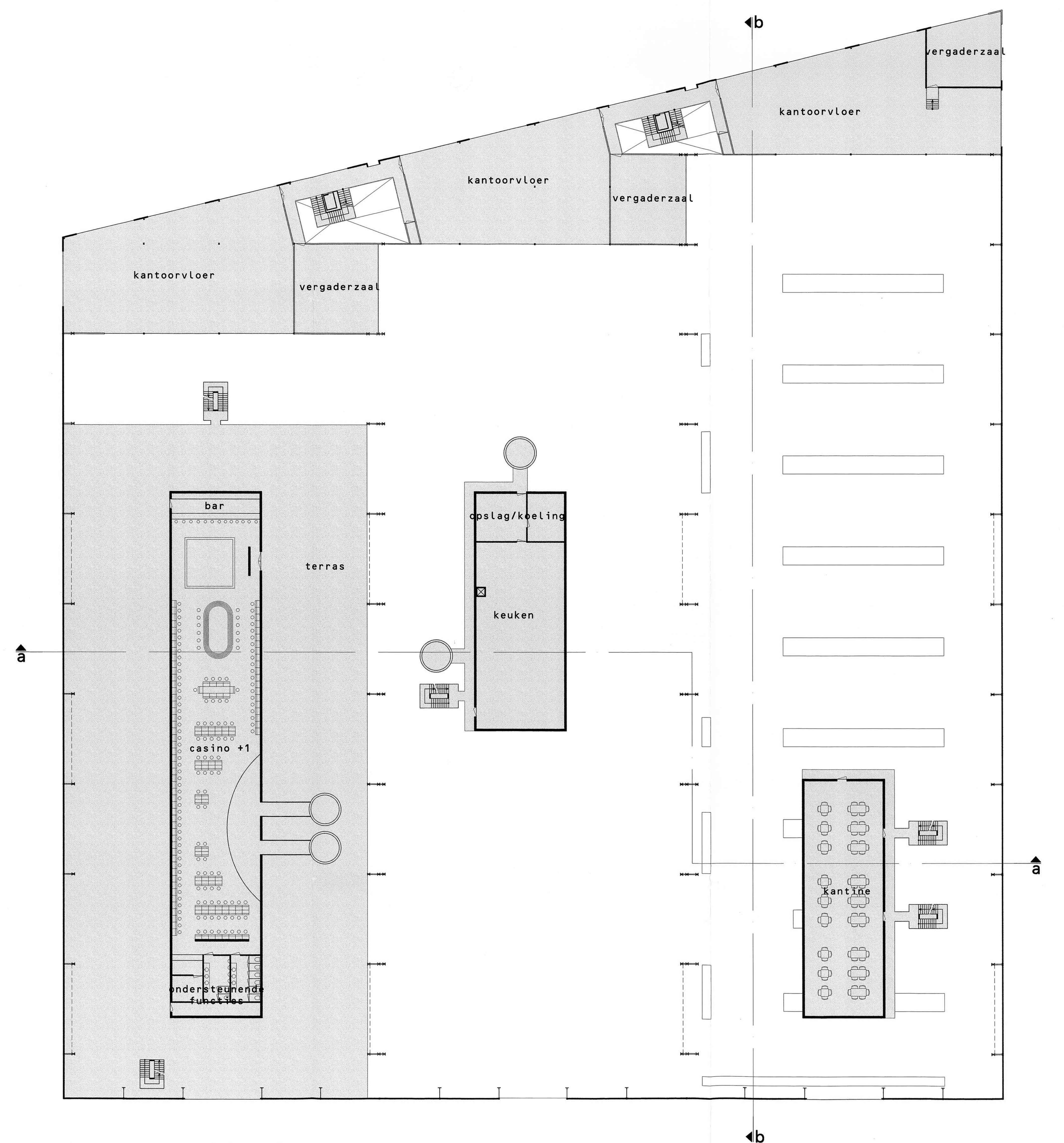


doorsnede b-b

aanzichten & doorsneden



begane grond



1ste verdieping

begane grond & eerste verdieping 1 : 200