

Aging and lifestyle

Citation for published version (APA):

Cabbia, A., & van Riel, N. A. W. (2017). *Aging and lifestyle: impact on skeletal muscle function* .

Document status and date:

Published: 01/09/2017

Please check the document version of this publication:

- A submitted manuscript is the version of the article upon submission and before peer-review. There can be important differences between the submitted version and the official published version of record. People interested in the research are advised to contact the author for the final version of the publication, or visit the DOI to the publisher's website.
- The final author version and the galley proof are versions of the publication after peer review.
- The final published version features the final layout of the paper including the volume, issue and page numbers.

[Link to publication](#)

General rights

Copyright and moral rights for the publications made accessible in the public portal are retained by the authors and/or other copyright owners and it is a condition of accessing publications that users recognise and abide by the legal requirements associated with these rights.

- Users may download and print one copy of any publication from the public portal for the purpose of private study or research.
- You may not further distribute the material or use it for any profit-making activity or commercial gain
- You may freely distribute the URL identifying the publication in the public portal.

If the publication is distributed under the terms of Article 25fa of the Dutch Copyright Act, indicated by the "Taverne" license above, please follow below link for the End User Agreement:

www.tue.nl/taverne

Take down policy

If you believe that this document breaches copyright please contact us at:

openaccess@tue.nl

providing details and we will investigate your claim.

AGEING & LIFESTYLE

IMPACT ON SKELETAL MUSCLE FUNCTION



Andrea Cabbia, MSc;
Prof. Natal van Riel, PhD

Computational Biology, Eindhoven University of technology, Eindhoven (NL)

Preventing age-related muscle loss:

The loss of muscle mass and strength with age (**sarcopenia**), is a risk factor for cardiovascular and metabolic diseases, it increases the risk of falls, of developing frailty and disabilities, and results in an impairment in the quality of life and autonomy of an individual.

An active lifestyle is the most immediate and accessible treatment to prevent sarcopenia, with a considerable impact on the ageing process.

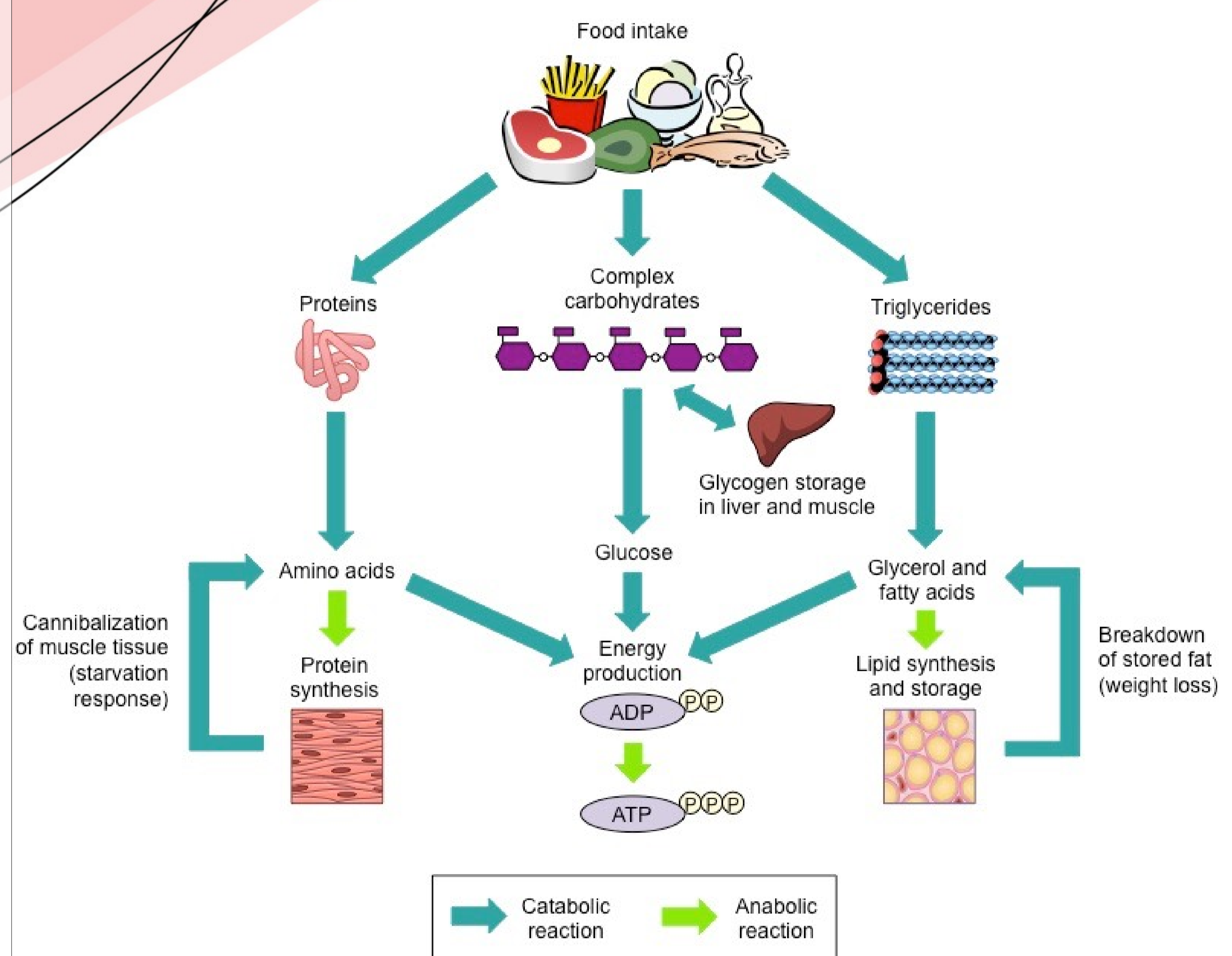
An age-specific genome-scale metabolic model:

A reconstruction of the biochemical reactions network of the ageing skeletal muscle, built from gene expression data gathered from older adults' muscle tissue biopsies.

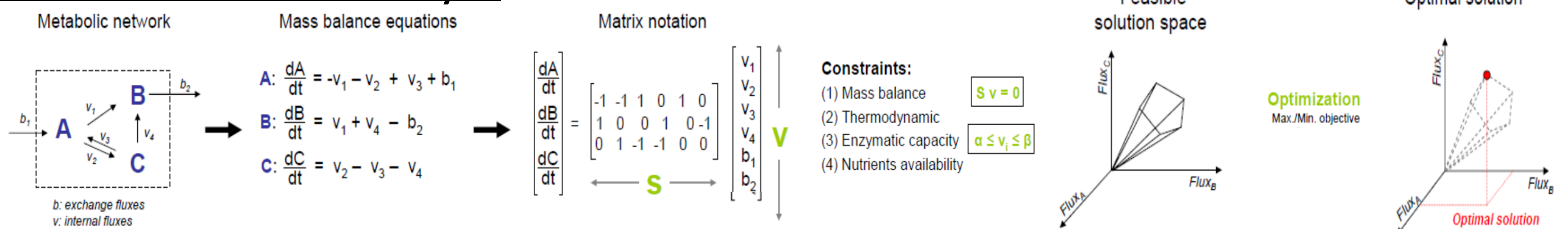
This modelling framework allows us to simulate arbitrary nutritional inputs (diets) and energy demands (exercises), and how they impact on muscle synthesis/degradation ratio.

The model is being used to investigate the effectiveness of different nutritional and physical exercise regimes in stimulating post-exercise protein synthesis, which is often impaired in the elderly.

The aim is to identify an optimal personalized lifestyle change intervention able to offset the effects of sarcopenia.



Methods: Flux Balance Analysis

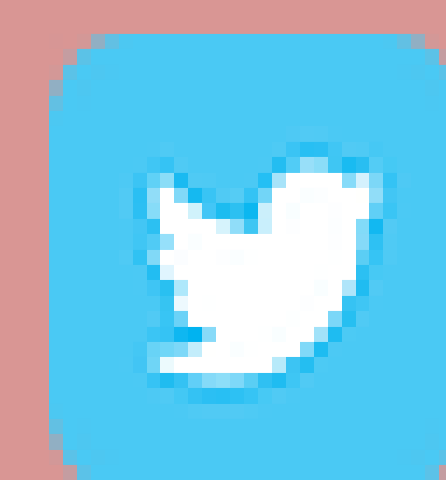


www.birmingham.ac.uk/panini

Andrea Cabbia
Computational Biology – TU/e (Eindhoven, NL)
a.cabbia@tue.nl



PANINI_EU



@PANINI_EU

This project has received funding from the European Union's Horizon 2020 research and innovation programme under the Marie Skłodowska-Curie grant agreement 675003

