

## Defining Professional Communication Skills For Malaysian Graduates: Looking At Trustworthiness

*Azza J. Ahmad-Tajuddin*

### Keywords

*ATLAS.ti, trustworthiness, credibility, transferability, dependability, confirmability, triangulation, professional communication skills*

### Abstract

Lincoln and Guba (1985) posit that trustworthiness of a qualitative research study is important to evaluate its worth. The use of data analysis software like ATLAS.ti raises the issue of trustworthiness—specifically: credibility, transferability, dependability, and confirmability—in defining the Professional Communication Skills (PCS) for Malaysian graduates. In this study, PCS for the workplace is defined by the Malaysian stakeholders: employers of the private sector, the Malaysian government, and academia. ATLAS.ti was utilized to analyze and triangulate data from in-depth interview recordings, annual reports, Human Resource documents, government policies as well as documents from academia. By using ATLAS.ti, meticulous, yet rapid and concise data analysis can be carried out without risking trustworthiness. It is believed that ATLAS.ti has helped to develop the PCS framework in order to help instructors and policy makers of Malaysian HEIs in making a sound judgment in teaching PCS in classrooms. Since ATLAS.ti covers the issue of transferability, a similar study can be replicated from time to time to ensure that the PCS framework is updated, based on the needs of the stakeholders, which then help to develop the graduates' potential to be more marketable employees.

### Introduction

This study aims to produce an informed, impartial and highly valid Professional Communication Skills (PCS) framework in English to be used, not just as a reference for the English for Occupational Purposes practitioners, but also as a checklist for the future Malaysian employers to assess their entry-level employees. Having a well-defined PCS Framework will dismiss the discrepancy between the industry needs and the manner in which university students are being prepared for the workforce. However, it is undoubtedly more important to have a clearly defined PCS Framework validated by the stakeholders. Having the stakeholders to be thoroughly involved in creating meaning and amending the components within the framework would ensure that the framework is well endorsed by the future employees. The purpose of this validation stage is to ensure that the researcher has taken into account the various needs and the requirements of the Malaysian stakeholders on the essential English communication skills for workplace accurately without enclosing own preconception or wrong interpretation of analysis. Additionally, in making sure that the framework is not only valid but also achievable, a few experts in the field of teaching English in higher education would look thoroughly through the framework. The study aims to create a real-world and hands-on framework which can be practically applied in EOP lessons in Malaysian higher education institutions (HEIs).

This study situates itself in the interpretivist tradition which argues that 'all social reality is constructed, or created, by social actors' (Esterberg, 2002, p. 15). Informed by this theoretical orientation it is assumed that the researcher must gain direct access to the researched participants and their specific contexts to

understand how they construct and interpret the meanings of their lived experiences. This is achieved through 'social interaction' (O'Donoghue, 2007, p. 9) between the researcher and the researched participants. Consistent with the interpretive stance of this study, the qualitative approach to inquiry was chosen to facilitate in-depth and detailed understanding (Patton, 2002) of the Malaysian stakeholders' needs for the Professional Communication Skills (PCS) in English, specifically addressing at their requirements for entry-level employee, particularly the Malaysian graduates. Van Maanen (1983: 9) addresses the qualitative methods as: '*an array of interpretive techniques which seek to describe, decode, translate, and otherwise come to terms with the meaning, not the frequency, of certain more or less naturally occurring phenomena in the social world*'.

In this study, the direct voices of all stakeholders, which covered a total number of 24 respondents in the following subgroups: 1) human resource managers from multi-national key industries (10 respondents); 2) government executives who recruit entry-level employees for public sectors (4 respondents) and; 3) EOP instructors and HE liaison officers for industrial training from four HEIs (10 respondents) will be heard in order to generate understandings of their requirements of PCS in English language upon graduation.

Specifically, this study sought the answers to the following questions:

RQ1: What are stakeholders and theoretical identified communication constructs that support the development of a PCS in English Framework?

RQ2: What are stakeholders' assessments about the validity of the PCS Framework?

A qualitative case study approach was deemed the most appropriate method, given its descriptive, dynamic, and authentic nature. In doing so, the researcher must therefore try to enhance the quality of the study through different rigorous strategies in order to gain a better picture of reality (Mays and Pope, 1995; Audet and d'Amboise, 2001). ATLAS.ti 7 is believed to have an enormous potential in bringing more rigor and *trustworthiness* to qualitative inquiry of this study.

## **Trustworthiness**

The author agrees with Morse *et al.*'s (2002) arguments that qualitative researchers should reclaim responsibility for reliability and validity by implementing verification strategies integral and self-correcting during data collection process. They emphasized the execution of rigor or thoroughness within each qualitative design, and moved the responsibility for incorporating and maintaining reliability and validity from external reviewers' judgments to the investigators themselves. Tobin and Begley (2004, p.390) write: 'Rigor is the means by which we demonstrate integrity and competence, a way of demonstrating the legitimacy of the research process. Without rigor, there is a danger that research may become fictional journalism, worthless as contributing to knowledge.'

Guba and Lincoln substituted reliability and validity with the parallel concept of “trustworthiness,” containing four aspects: Credibility, transferability, dependability, and confirmability. Within these were specific methodological strategies for demonstrating qualitative rigor, such as the audit trail, member checks when coding, categorizing, or confirming results with participants, peer debriefing, negative case analysis, structural corroboration, and referential material adequacy (Guba & Lincoln, 1981; Lincoln & Guba, 1989; Guba & Lincoln, 1982).

Lincoln and Guba posit that trustworthiness of a research study is important to evaluating its worth. Trustworthiness involves establishing:

<b>Credibility</b>	Confidence in the 'truth' of the findings
<b>Transferability</b>	Showing that the findings have applicability in other contexts
<b>Dependability</b>	Showing that the findings are consistent and could be repeated
<b>Confirmability</b>	A degree of neutrality or the extent to which the findings of a study are shaped by the respondents and not researcher bias, motivation, or interest.

Table 1: Trustworthiness criteria (Lincoln and Guba, 1985)

In this research ATLAS.ti 7 was used to support the data analysis process. In the discussion of trustworthiness below, some applications of ATLAS.ti 7 will be explained to show how the software helped in producing high quality results.

### ***Techniques For Establishing Credibility***

#### *Triangulation*

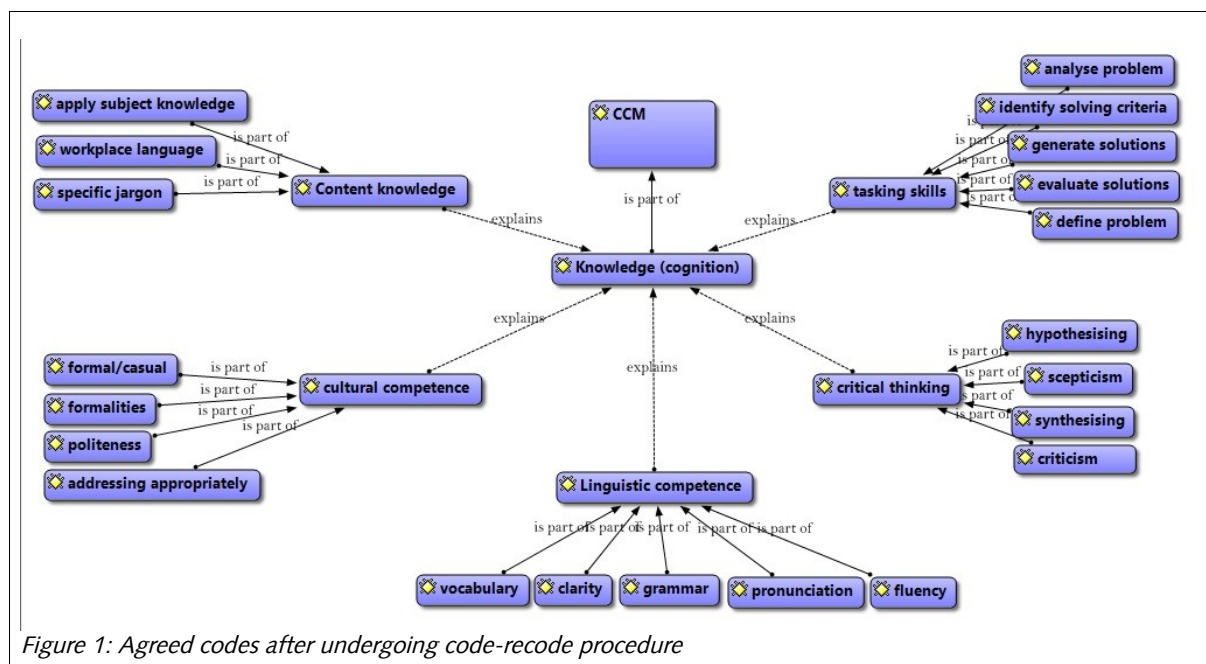
Triangulation across sources required the researcher to develop evidence for an interpretation from interaction with several informants, particularly several types of informants as the purposive sampling plan unfolds (Creswell, & Miller, 2010). In the present study, data from three sources were examined (HR managers, government executives and instructor/trainers). As a validity procedure, triangulation was a step taken by the researcher employing a systematic process of sorting through the data to find common themes or categories by eliminating overlapping areas. ATLAS.ti 7 was used to provide corroborating evidence collected through interviews and documents to locate major and minor themes. The narrative account was deemed valid because the researcher went through this process and relied on multiple forms of evidence rather than a single incident or data point in the study. In addition, respondents from different fields of expertise and backgrounds were interviewed in order to validate the PCS framework.

A method that was used in this study to increase the credibility and dependability of the study was a code-recode procedure. This procedure was done during the data analysis phase of the study whereby Krefting (1991) suggested that after coding a segment of data, a minimum of two weeks interval should be given to the data before recoding it over again, as if coding it for the first time. Codes were derived

deductively from the Communication Competence Model (CCM) by Morreale, Spitzberg and Barge (2006).

The code-recode technique was helpful in auditing own thoughts and judgement during data analysis. The incongruent codes were highlighted and an in depth discussion with a second uninvolved researcher who has experienced with qualitative methods were carried out to neglect bias and misjudgement on the researcher's side.

Looking at Figure 1 below, it described the agreed codes for the component of 'knowledge of cognition' after going through code and recode procedure. All five components of knowledge of cognition namely content knowledge, cultural competence, linguistic competence, tasking skills and critical skills derived from the deductive CCM framework (Morreale, Spitzberg and Barge, 2006). The incongruent codes were discussed with a second researcher (for instance 'courtesy' and 'being civil' within cultural competence component) and more pertinent and apt code were generated (in this case, 'politeness'). As shown in Figure 1, the subcomponents below are the agreed codes after undergoing the code-recode process as well the discussion with another researcher.



In ATLAS.ti.7 data was stored in written text formats and digital voice recordings. Coding and the triangulation process through the use of ATLAS.ti 7 can be carried out much more systematically and rigorously in comparison to manual coding since interview recordings, annual reports, Human Resource documents, government policies, and documents from academia were compiled together in a single project file or Hermeneutic Unit (HU).

All pieces of data need to be ordered and managed. This is where coding comes in as a useful strategy. According to Lewis (2004), coding is more easily done in ATLAS.ti 7 as compared to other CAQDAS

packages. Through coding, segments of the data can be linked together and form thematic groups. In this step, excerpts in interview transcriptions and annual reports which speak about graduates' workplace literacy problems were highlighted and coded. With the help of the codes in this coding process, we can see the thematic contours of each group of quotations (Konopásek, 2008). Additionally, codes can be selected, commented, ordered, filtered, moved, renamed, and linked to each other and they can be viewed in lists, hierarchies as well as network views (ibid).

By using the coding techniques, the problematical issues highlighted by the stakeholders were arranged and structured showing that the lack of professional communication skills in English by the current graduates is noticed as a major concern by all stakeholders.

### ***Peer Debriefing***

A peer review or debriefing is the review of the data and research process by someone who is familiar with the research or the phenomenon being explored. Peer debriefers provide written feedback to researchers or simply serve as a sounding board for ideas. In this study, the set of interview questions were verified with the supervisor a few times in ensuring that the questions would answer the needs of the research. Peer debriefing helped to restructure the overemphasized and under-emphasized points as well to clarify any vague descriptions within the interview protocol. By seeking the assistance of peer debriefers, researchers add credibility to a study (Creswell & Miller, 2010).

Additionally, experts from the fields of TESOL, policy, and assessment in HE were also included for validation process. Meetings with these experts were held after completing data analysis and member-checking process with respondents. Those meetings were held in order to obtain feedback. In amending oversight points, reflecting views on the information given from experts and subsequently, investigating other alternatives in the research process. In this study, three experts from the field agreed to facilitate the validation process.

During this stage, the Memo feature of ATLAS.ti was used frequently in order to reflect and interpret the relationships between codes and the real world. From the deductive and auto-coding processes done earlier with all the PDs, the thoughts and interpretations of experts in the field of study were included, and so were the similarities as well as the differences of own findings.

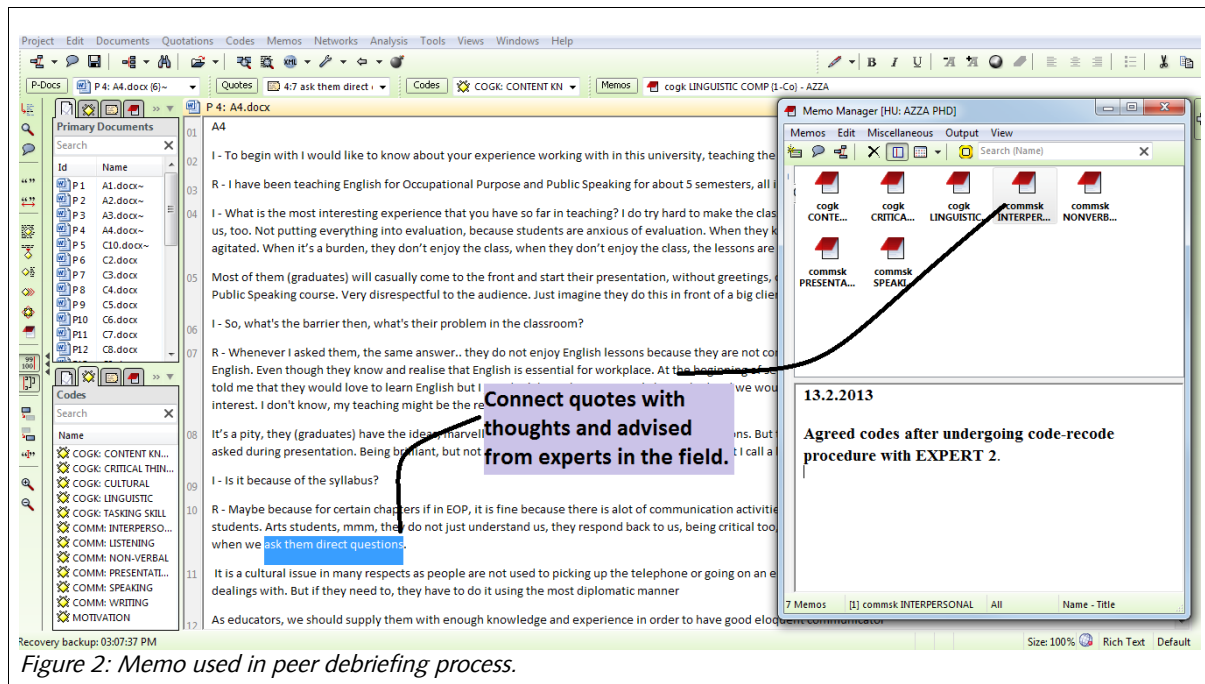


Figure 2: Memo used in peer debriefing process.

### Member-checking

Member-checking is considered an important process of validation when data, interpretations, and conclusions are tested with the participants from whom the data were originally obtained. Lincoln and Guba (1985) posit that this is the most crucial technique for establishing credibility since, to them, credibility is to return data to the subjects for verification (Lincoln and Guba, 1985). This process provides an opportunity to give participants opportunity to correct errors and challenge what are perceived as wrong interpretations and also provide the opportunity to volunteer additional information which may be stimulated by the playing back process (Wallendorf & Belk, 1989). In addition, member checking allows respondents to assess adequacy of data and findings as well as to confirm and summarize preliminary findings. Nonetheless, it is worth to mention that amongst the drawbacks of member checking are that the respondents may deny whatever they have uttered during the interview sessions and may disagree with researcher's interpretations. This may lead to confusion rather than confirmation (Morse, 1994). But this does not mean that member checks are of little use for qualitative research; rather, Koelsch (2013) suggested that member check can be a transformational process for both the researcher and participants if it can be a catalyst to improve the situation, especially of the participants'. It is essential for the researcher to highlight the importance of the research project to the participants, to empower them to act by engaging themselves with the study (Koelsch, 2013). True, these member checks are not without fault. However, they serve to decrease the incidences of incorrect data and the incorrect interpretation of data, with the overall goal of providing findings that are authentic and original (Creswell, 2007; Moustakas, 1994).

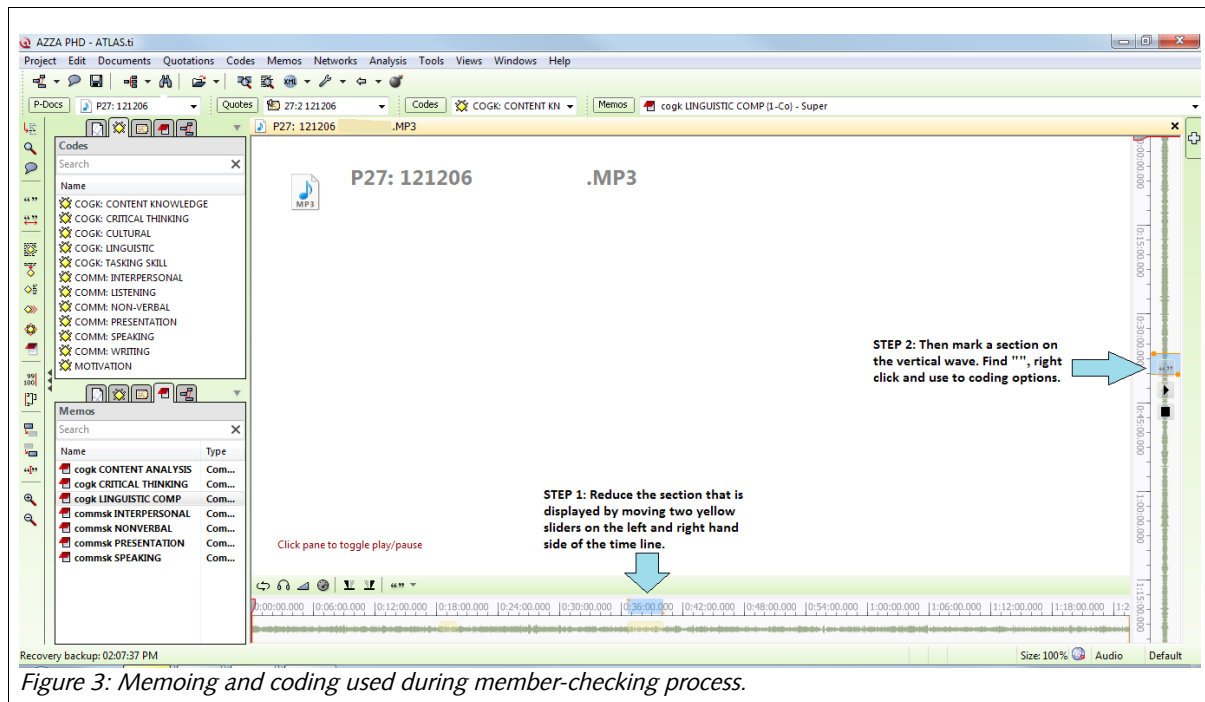


Figure 3: Memoing and coding used during member-checking process.

All respondents who had been interviewed were then presented with the first draft of the PCS framework (Refer to Appendix A). Only one respondent was not able to meet face to face, so a Skype meeting was arranged. Respondents gave feedback on the framework—the words or phrases used as well as the display of it. The feedback was not only essential to improve the framework but more importantly is for them to validate their own thoughts and ideas which were expanded in the PCS framework. ATLAS.ti 7 was particularly useful in this stage since the researcher has saved the actual voice recording from the interview sessions in the HU. At times when the respondents were unsure about what was spoken, the recordings could be replayed to them to refresh their memory on the debated issue. Here, they would agree or disagree on the researcher's interpretations of findings, which is the main objective of member-checking process. This shows the versatility of ATLAS.ti as a program for data analysis. In this study, three interview recordings were chosen to be directly coded from the audio files because of time constraint. The member check process needed to be done within a short time period. Techniques for establishing transferability

### Thick Description

Creswell & Miller (2010) evaluate another procedure for establishing credibility in a study by describing the setting, the participants, and the themes of a qualitative study in rich detail. According to Denzin (1989), "thick descriptions are deep, dense, detailed accounts. . . . Thin descriptions, by contrast, lack detail, and simply report facts" (p. 83). The process of writing using thick description is to provide as much detail as possible. It may involve describing a small slice of interaction, experience, or action; locating individuals in specific situations; bringing a relationship or an interaction alive between two or more

persons; or providing a detailed rendering of how people feel (Denzin, 1989). This is when the combination of 'Codes' and 'Memo' of ATLAS.ti 7 play its role. Similar themes were coded and researcher's interpretation was included using Memo.

Friese (2012; 2009) recommended that memos should be used to support the researcher in the analytical work, whereby such use creates spaces for reflection, analysis, integration and interpretation. Another advantage of using memos in ATLAS.ti is that they can be directly linked to the quotations and codes; hence the thoughts were 'captured' within the exact context.

Due to the vast amount of interpretations involved in this qualitative study, a 'reflexivity' process was involved in capturing the meaning of data, and more importantly, in interpreting the real meaning of the data. Guillemin and Gilliam (2004 in Barber & Walczak, 2009) state:

'Reflexivity involves critical reflection of how the researcher constructs knowledge from the research process—what sorts of factors influence the researcher's construction of knowledge and how these influences are revealed in the planning, conduct, and writing up of the research. A reflexive researcher is one who is aware of all these potential influences and is able to step back and take a critical look at his or her own role in the research process. The goal of being reflexive in this sense has to do with improving the quality and validity of the research and recognizing the limitations of the knowledge that is produced, thus leading to more rigorous research'.

## Techniques For Establishing Dependability

### *Inquiry Audit*

An audit trail is established by researchers documenting the inquiry process through journaling and memoing, keeping a research log of all activities, developing a data collection chronology, and recording data analysis procedures clearly (Lewis, 2009). Schwandt & Halpern (1988) explain that the external auditor examines this documentation with the following questions in mind:

- Are the findings grounded in the data?
- Are inferences logical?
- Is the category structure appropriate?
- Can inquiry decisions and methodological shifts be justified?
- What is the degree of researcher bias?
- What strategies were used for increasing credibility?

Through this process of documenting a study and a review of the documentation by an external auditor, the narrative account becomes credible. Using ATLAS.ti 7, the researcher can ensure that all thoughts and experiences were carefully recorded as Memos. During data collection, notes on observation concerning the context and constraints under which research participants were providing their data; and the researcher's thoughts were also meticulously kept on record and used as additional memos in ATLAS.ti 7 in the same Hermeneutic Unit. In this way, the researcher tried to take into account the social and cultural environment under which the research participants provided the data.



While carrying out data analysis, researcher's personal thoughts, interpretations, and beliefs were also written in ATLAS.ti memos for further considerations while developing theory from the collected data. These interpretations would then translated within the PCS Framework and Malaysian stakeholders involved, as well as the experts in the field would corroborate them during member checking and peer debriefing processes. In principle, researchers are encouraged to reflect on and record their interpretations, and they are reminded that the validity of their interpretations is dependent on being able to demonstrate how they were reached (Mauthner and Doucet, 2003; Mason, 1996). This sort of reflexive actions are vital for maintaining rigor in qualitative social research. Using ATLAS.ti 7 therefore brings its added value for rigor by providing in-built features that could be easy and simple to use.

### **Techniques For Establishing Confirmability**

Lincoln and Guba (1985) uses inquiry audit and triangulation as the techniques for establish confirmability. These techniques have been explained above. Finally, the emerging categories were classified and arranged in order to analyze the conceptual relationships using the 'Network View' feature in ATLAS.ti. A sample used within this research in explaining one of the main findings is shown in Figure 3. ATLAS.ti 7 undoubtedly helps researchers to explore the complex phenomena hidden in the data, through analyzing the conceptual relationships (Woolf, 2008). Within this process, it was made sure that the theory was conceptually dense (Strauss and Corbin, 1994). In other words, after coding and auto-coding the data using the deductive analysis, using a strong theory, namely Communicative Competence Model as a basis, the 'Network View' was used as tool to present conceptual relations in developing the PCS framework as required by the stakeholders of Malaysia. Network view of the study aided the process of writing thick description of the research since it showed linkages between data. This network visualizes the findings of the researcher and becomes especially useful in this study which contributes to framework-building. The outcome of the study which has undergone the validation process is complemented with attainable exemplars within the PCS framework in English (See Appendix B).

### **Conclusion**

To sum up, this paper has outlined the important contribution of ATLAS.ti 7 in bringing rigor to our qualitative social research project. It described why and how ATLAS.ti 7 has been used in establishing trustworthiness within the qualitative inquiry process. This paper provides the different 'trustworthiness' techniques used in defining the Professional Communication Skills (PCS) for the Malaysian graduates employing different features within ATLAS.ti 7. In doing so, Lincoln and Guba's (1985) techniques for establishing credibility, transferability, dependability and confirmability were clarified.

As a conclusion, it is believed that ATLAS.ti 7 can be utilized for building trust within qualitative social research, especially through explaining the rigor of the process. Within a qualitative study it is essential that

social researchers create a habit of providing extensive description of how data analysis has been executed. Belgrave et al. (2002) stressed that a well-written description of the rigor in research analysis should convince readers that the study findings are credible and trustworthy.

## References

- Angen, M. J. (2000) Evaluating Interpretive Inquiry: Reviewing the Validity Debate and Opening the Dialogue. *Qualitative Health Research*, Vol 10: 378-39
- Audet, J. and d'Amboise, G. (2001) 'The Multi-Site Study: An Innovative Research Methodology'. *The Qualitative Report*, Vol. 6, No.2, pp.1-12.
- Barber, J. P., & Walczak, K. K. (2009). *Conscience and Critic: Peer Debriefing Strategies in Grounded Theory Research*.
- Belgrave, L. L., Zablotzky, D. and Guadagno, M. A. (2002). 'How do we talk to each other? Writing qualitative research for quantitative readers'. *Qualitative Health Research*, Vol.12, No.10, pp.1427-1439.
- Bogdan, R. C., & Biklen, S. K. (2007). *Qualitative research for education: An introduction to theories and methods* (5th ed.). Boston: Pearson Education.
- Creswell, J. W. (2009). *Research design: Qualitative and quantitative and mixed methods approaches* (3rd ed.). Thousand Oaks, CA: Sage.
- Creswell, J. W., & Miller, D. L. (2010). in *Qualitative Inquiry*, (November 2012), 37–41.
- Crotty, M. (1998). *The foundations of social research: Meaning and perspective in the research process*. London: Sage.
- Denzin, N. K. (1989). *The research act* (3rd ed.). Englewood Cliffs, NJ: Prentice Hall.
- Denzin, N. K., & Lincoln, Y. S. (Eds.). (2008). *Collecting and interpreting qualitative materials* (3rd ed.). Thousand Oaks, CA: Sage.
- Esterberg, K. G. (2002). *Qualitative methods in social research*. Boston: The McGraw- Hill Companies.
- Friese, S.(2012). *Qualitative data analysis with ATLAS.ti*. London: Sage.
- Friese, S. (2009). *Working Effectively With Memos in ATLAS.ti*. *ATLAS.ti Library*. Accessed from [http://downloads.atlasti.com/library/Friese\\_2009-09\\_1.pdf](http://downloads.atlasti.com/library/Friese_2009-09_1.pdf)
- Glaser, B. G. & Strauss, A. L.(1967). *The Discovery of Grounded Theory: Strategies for Qualitative Research*. Chicago. Aldine Publishing Company
- Guba, E. G. (1981). Criteria for assessing the trustworthiness of naturalistic inquiries, *Educational Communication and Technology Journal*, 29 (2), 75-91.
- Guba, E. G., & Lincoln, Y. S. (1981). Effective evaluation: Improving the usefulness of evaluation results through responsive and naturalistic approaches. San Francisco, CA: Jossey-Bass.
- Guba, E. G., & Lincoln, Y. S. (1982). Epistemological and methodological bases of naturalistic inquiry. *Educational Communication and Technology Journal* 30 (4),233-252.
- Guba, E. G., & Lincoln, Y. S. (1989). *Fourth generation evaluation*. Newbury Park, CA: Sage.
- Krefting, L. (1991). Trustworthiness. *The American Journal of Occupational Therapy*, 45(3), 214–222.
- Leininger, M. (1994). Evaluation criteria and critique of qualitative research studies. In J.M. Morse (Ed.), *Critical Issues in Qualitative Research Methods*. Newbury Park,CA: Sage.
- Lewis, J. (2009). Redefining Qualitative Methods : Believability in the Fifth Moment, 1–14.
- Lincoln, Y. S. & Guba, E. G. (1985). *Naturalistic inquiry*. Beverly Hills, CA: Sage.

- Lincoln, Y. S. (1995). Emerging criteria for quality in qualitative and interpretive research. *Qualitative Inquiry*, 1, 275-289.
- Mason, J. (1996). *Qualitative Researching*, London, Sage.
- Mauthner, N.S. and Doucet, A. (2003). Reflexive Accounts and Accounts of Reflexivity in Qualitative Data Analysis. *Sociology*. Volume 37(3): 413–431.
- Mays, N. and Pope, C. (1995) Qualitative Research: Rigour and Qualitative Research. *British Medical Journal*, Vol. 311, pp.109-112.
- Merriam, S. B. (2009). *Qualitative research: A guide to design and implementation. Revised and expanded from qualitative research and case study applications in education*. San Francisco, CA: Jossey-Bass Publishers.
- Morse, J. M., Barrett, M., Mayan, M., Olson, K., Spiers, J., & Hon, D. (2002). Verification Strategies for Establishing Reliability and Validity in Qualitative Research, 1(2), 1–19.
- Morreale, Sherwyn P., Spitzberg, Brian H. and Barge, Kevin (2006, 2ed.). *Human communication: Motivation, Knowledge, Skills*. Cengage Learning.
- O'Donoghue, T. (2007). *Planning your qualitative research project: An introduction to interpretivist research in education*. New York: Routledge.
- Patton, M. Q. (2002). *Qualitative research and evaluation methods* (3rd ed.). Thousand Oaks, CA: Sage.
- Payne, G. and Williams, M. (2005). Generalization in Qualitative Research. *Sociology*, Volume 39(2): 295–314. DOI: 10.1177/0038038505050540
- Rambaree, K. (2007). Bringing Rigour in Qualitative Social Research : The Use of a CAQDAS, 13, 1–16.
- Schwandt, T. A. & Halpern, E. S. (1988). *Linking Auditing and Metaevaluation: Enhancing Quality in Applied Research*. Thousand Oaks, CA: Sage Publications Inc.
- Schwandt, T. A. (2000). Three epistemological stances for qualitative inquiry. In N. K. Denzin & Y. S. Lincoln (Eds.), *Handbook of qualitative research* (2nd ed., pp. 189-213). Thousand Oaks, CA: Sage.
- Strauss A. and Corbin J. (1994) *Grounded theory methodology: An Overview*, in Denzin N.K. and Lincoln Y.S (eds.) *Handbook of Qualitative Research*. (pp. 273-285) London: Sage.
- Tobin, G. a, & Begley, C. M. (2004). Methodological rigour within a qualitative framework. *Journal of advanced nursing*, 48(4), 388–96. doi:10.1111/j.1365-2648.2004.03207.x
- Van Maanen, J. (1983) *Qualitative Methodology*, Sage, London.
- Wallendorf, M., & Belk, R. W. (1989). Assessing Trustworthiness in Naturalistic Consumer Research. *Interpretive Consumer Research, Special VO*, 69–84.
- Woolf, Nick. *ATLAS.ti Library* (2008). 'How To Bring Structure To A List Of Codes – Part 3: Networks' Accessed from [http://downloads.atlasti.com/library/Woolf\\_2008-06\\_9.pdf](http://downloads.atlasti.com/library/Woolf_2008-06_9.pdf) [10/4/2013]

APPENDIX A

Core Component (Communicative Competence Model)	Sub Component	Indicators	Requirement for workplace
Cognitive Knowledge	Content Knowledge	Specific jargon, Discourse competence	Contribute to on-going improvement and expansion of knowledge in the betterment of workplace operations.
	Cultural Competence	Cultural knowledge to speak appropriately depending on setting (formal/casual)	Contribute to harmonious relations between superior, subordinates, colleagues and clients.
	Linguistic Competence	Vocabulary Grammar Fluency Pronunciation (clearly and accurately)	Contribute to meaningful and effective conversations using appropriate workplace discourse.
	Critical thinking	Hypothesising Synthesising Criticism Scepticism	Contribute to constructive criticism while resolving issues at workplace.
	Tasking skill	Defining problem Analysing the problem Identifying criteria for solving the problem Generating solutions or alternatives Evaluating solutions	Contribute to productive long-term and short-term strategic planning and effective execution of workplace tasks.
Communication Skills	Interpersonal Communication	Composure Coordination Attentiveness Expressiveness	Contribute to diplomatic and matured communication between superior, subordinates and clients.
	Presentation Skill	Appropriateness Credibility Clarity Vividness Voice (rate, pitch, volume)	Contribute to sharing of ideas and thoughts effectively with superior, colleagues and clients.
	Speaking skill	Informative Persuasive Small talks Counter arguing	Contribute to productive and appropriate verbal interactions at workplace.
	Non-verbal communication	Physical appearance (first impression) Body communication Touch Voice Time and space	Contribute to the ease and comfort during interactions.
	Listening Skill	Comprehend Evaluate Emphasise Critique	Contribute to successful working relationships and effective execution of tasks.
	*Writing Skill	*not part of CCM.	Contribute to effective execution of tasks at work and making the work flow efficient.
Motivation	Positive motivation	Willingness to communicate	Contribute to job satisfaction.

Core Component (Communicative Competence Model)	Sub Component	Indicators	Requirement for workplace
		Appreciating non-verbal communication	

Table 2: Pre-validation professional communication skills in English framework.

## APPENDIX B

Core Component (Communicative Competence Model)	Sub Component	Requirement for workplace	Exemplars: 'Upon graduation, graduates should be able to...'
Cognitive Knowledge	Content Knowledge	Contribute to on-going improvement and expansion of knowledge in the betterment of workplace operations.	<ul style="list-style-type: none"> <li>• Build a relevant knowledge base for workplace.</li> <li>• Apply their subject content knowledge at workplace.</li> <li>• Manage own learning in order to maintain and renew attributes throughout working lives.</li> <li>• Use specific work-related jargon appropriately in speech and reports.</li> </ul>
	Cultural Competence	Contribute to harmonious relations between superior, subordinates, colleagues and clients.	<ul style="list-style-type: none"> <li>• Speak and write using the most appropriate register.</li> <li>• Agreeing/Disagreeing with the superior and subordinate in a diplomatic manner.</li> <li>• Adapt with small talks with colleagues, being aware with context awareness.</li> </ul>
	Linguistic Competence	Contribute to meaningful and effective conversations using appropriate workplace discourse.	<ul style="list-style-type: none"> <li>• Organize spoken and written language during a variety of communication tasks at workplace.</li> <li>• Present their speech and written work using appropriate vocabulary and fluency.</li> <li>• Clearly and accurately articulate words during workplace activities.</li> </ul>
	Critical thinking	Contribute to constructive criticism while resolving issues at workplace.	<ul style="list-style-type: none"> <li>• Critically synthesizing their thoughts in a professional manner to improve situation.</li> <li>• Identify, analyze and solve problems critically and innovatively.</li> <li>• Give positive feedback and healthy criticism after analyzing issues at workplace.</li> </ul>
	Tasking skill	Contribute to productive long-term and short-term strategic planning and effective execution of workplace tasks.	<ul style="list-style-type: none"> <li>• Organize thoughts and solve workplace problems and issues.</li> <li>• Argue politely in generating solutions and alternatives in workplace issue.</li> <li>• Synthesize issues at work and evaluate solutions individually.</li> </ul>

Core Component (Communicative Competence Model)	Sub Component	Requirement for workplace	Exemplars: 'Upon graduation, graduates should be able to...'
Communication Skills	Interpersonal Communication	Contribute to diplomatic and matured communication between superior, subordinates and clients.	<ol style="list-style-type: none"> <li>3. Speak comfortably with employers, not hindered with nerves.</li> <li>4. Pay attention to workplace communications activities and do not get distracted easily (with electronic devices).</li> <li>5. Attentive in formal or informal workplace communication which can help build rapport with superiors, colleagues and clients.</li> <li>6. Well prepared prior to workplace meetings and planned activities in order to express opinions maturely.</li> </ol>
	Presentation Skill	Contribute to sharing of ideas and thoughts effectively with superior, colleagues and clients.	<ul style="list-style-type: none"> <li>• Able to share ideas with colleagues creatively.</li> <li>• Able to persuade clients to accept their ideas by explaining in a simple yet interesting manner.</li> <li>• Inform superiors of new innovative measures in improving workplace.</li> <li>• Keep spectators' attention using range of presentation skill, with the help of IT as a management tool.</li> <li>• Responding to enquiry from the clients.</li> </ul>
	Speaking skill	Contribute to productive and appropriate verbal interactions at workplace.	<ul style="list-style-type: none"> <li>• Inform audience (superiors, colleagues and clients) in an enlightening manner.</li> <li>• Contributing ideas and give opinions in group discussions.</li> <li>• Persuade superiors, colleagues and clients to accept ideas and opinions using well-defined explanations.</li> <li>• Use specialist vocabulary in a correct manner.</li> <li>• Give clear instructions to solve issues at work.</li> <li>• Initiating contact, requesting information on the telephone.</li> <li>• Seeking information from others at work.</li> <li>• Responding to enquiries/problems from superior/clients.</li> <li>• State reasons for disagreeing without interrupting the speech of colleagues or superiors</li> <li>• Discussion work schedules and procedures.</li> <li>• Engage small talks with superior, colleagues and clients in-</li> </ul>

Core Component (Communicative Competence Model)	Sub Component	Requirement for workplace	Exemplars: 'Upon graduation, graduates should be able to...'
			<p>formally.</p> <ul style="list-style-type: none"> <li>Telephone conversations skill – answering inquiries, giving instructions.</li> </ul>
	Non-verbal communication	Contribute to the ease and comfort during interactions.	<ul style="list-style-type: none"> <li>Appropriately dressed according to workplace occasions.</li> <li>Be on time in all workplace functions.</li> <li>Control own nerves in meetings with superior and clients in order to be less agitated.</li> <li>Ensure their body language is not offensive during conversations with colleagues, superiors and clients.</li> <li>Wear pleasant facial expression.</li> </ul>
Motivation	Positive motivation	Contribute to job satisfaction.	<ul style="list-style-type: none"> <li>Aware that communicating fluently and confidently in English language can help secure a job in public and private sectors.</li> <li>Understand that speaking, listening and writing in good English will benefit them in terms of climbing up the workplace ladder quicker.</li> <li>Be confident in speak English publicly to superiors, colleagues and clients.</li> <li>Control own anxiety while speaking to an unknown group of new clients.</li> </ul>

Table 3: The Professional Communication Skills in English Framework

### Azza J. Ahmad-Tajuddin

School of Education, University of Nottingham Malaysia Campus, Broga Rd, 43500 Semenyih, Selangor. Department of Communication and Languages, Centre of Educational Foundation and Liberal Arts, University Malaysia Terengganu, 21030, Kuala Terengganu, Malaysia. [azzajauhar@umt.edu.my](mailto:azzajauhar@umt.edu.my)

### Article Information

This article is published at the Digital Repository of Technische Universität Berlin, URN urn:nbn:de:kobv:83-opus4-51278, <http://nbn-resolving.de/urn:nbn:de:kobv:83-opus4-51278>. It is part of ATLAS.ti User Conference 2013 : Fostering Dialog on Qualitative Methods, edited by Susanne Friese and Thomas Ringmayr. Berlin: Universitätsverlag der TU Berlin, 2014, ISBN 978-3-7983-2692-7 (composite publication), URN urn:nbn:de:kobv:83-opus4-51577, <http://nbn-resolving.de/urn:nbn:de:kobv:83-opus4-51577>