

Hard superconducting gap in InSb nanowires

Citation for published version (APA):

Gül, Ö., Zhang, H., de Vries, F. K., van Veen, J., Zuo, K., Mourik, V., Conesa-Boj, S., Nowak, M. P., van Woerkom, D. J., Quintero-Perez, M., Cassidy, M. C., Geresdi, A., Koelling, S., Car, D., Plissard, S. R., Bakkers, E. P. A. M., & Kouwenhoven, L. P. (2017). Hard superconducting gap in InSb nanowires. *Nano Letters*, 17(4), 2690-2696. <https://doi.org/10.1021/acs.nanolett.7b00540>

DOI:

[10.1021/acs.nanolett.7b00540](https://doi.org/10.1021/acs.nanolett.7b00540)

Document status and date:

Published: 12/04/2017

Document Version:

Publisher's PDF, also known as Version of Record (includes final page, issue and volume numbers)

Please check the document version of this publication:

- A submitted manuscript is the version of the article upon submission and before peer-review. There can be important differences between the submitted version and the official published version of record. People interested in the research are advised to contact the author for the final version of the publication, or visit the DOI to the publisher's website.
- The final author version and the galley proof are versions of the publication after peer review.
- The final published version features the final layout of the paper including the volume, issue and page numbers.

[Link to publication](#)

General rights

Copyright and moral rights for the publications made accessible in the public portal are retained by the authors and/or other copyright owners and it is a condition of accessing publications that users recognise and abide by the legal requirements associated with these rights.

- Users may download and print one copy of any publication from the public portal for the purpose of private study or research.
- You may not further distribute the material or use it for any profit-making activity or commercial gain
- You may freely distribute the URL identifying the publication in the public portal.

If the publication is distributed under the terms of Article 25fa of the Dutch Copyright Act, indicated by the "Taverne" license above, please follow below link for the End User Agreement:

www.tue.nl/taverne

Take down policy

If you believe that this document breaches copyright please contact us at:

openaccess@tue.nl

providing details and we will investigate your claim.

Hard Superconducting Gap in InSb Nanowires

Önder Gül,^{*,†,‡,Ⓚ} Hao Zhang,^{†,‡} Folkert K. de Vries,^{†,‡} Jasper van Veen,^{†,‡} Kun Zuo,^{†,‡} Vincent Mourik,^{†,‡} Sonia Conesa-Boj,^{†,‡} Michał P. Nowak,^{†,‡,§} David J. van Woerkom,^{†,‡} Marina Quintero-Pérez,^{†,||} Maja C. Cassidy,^{†,‡} Attila Geresdi,^{†,‡} Sebastian Koelling,^{Ⓛ,Ⓚ} Diana Car,^{†,‡,Ⓛ,Ⓚ} Sébastien R. Plissard,^{†,Ⓛ,#} Erik P. A. M. Bakkers,^{†,Ⓛ,#,Ⓚ} and Leo P. Kouwenhoven^{*,†,‡,∇}

[†]QuTech, Delft University of Technology, 2600 GA Delft, The Netherlands

[‡]Kavli Institute of Nanoscience, Delft University of Technology, 2600 GA Delft, The Netherlands

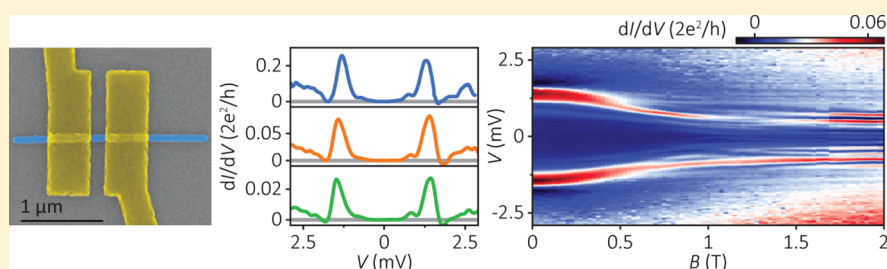
[§]Faculty of Physics and Applied Computer Science, AGH University of Science and Technology, al. A. Mickiewicza 30, 30-059 Kraków, Poland

^{||}Netherlands Organisation for Applied Scientific Research (TNO), 2600 AD Delft, The Netherlands

[Ⓛ]Department of Applied Physics, Eindhoven University of Technology, 5600 MB Eindhoven, The Netherlands

[#]CNRS-Laboratoire d'Analyse et d'Architecture des Systèmes (LAAS), Université de Toulouse, 7 avenue du colonel Roche, F-31400 Toulouse, France

[∇]Microsoft Station Q Delft, 2600 GA Delft, The Netherlands

S Supporting Information

ABSTRACT: Topological superconductivity is a state of matter that can host Majorana modes, the building blocks of a topological quantum computer. Many experimental platforms predicted to show such a topological state rely on proximity-induced superconductivity. However, accessing the topological properties requires an induced hard superconducting gap, which is challenging to achieve for most material systems. We have systematically studied how the interface between an InSb semiconductor nanowire and a NbTiN superconductor affects the induced superconducting properties. Step by step, we improve the homogeneity of the interface while ensuring a barrier-free electrical contact to the superconductor and obtain a hard gap in the InSb nanowire. The magnetic field stability of NbTiN allows the InSb nanowire to maintain a hard gap and a supercurrent in the presence of magnetic fields (~ 0.5 T), a requirement for topological superconductivity in one-dimensional systems. Our study provides a guideline to induce superconductivity in various experimental platforms such as semiconductor nanowires, two-dimensional electron gases, and topological insulators and holds relevance for topological superconductivity and quantum computation.

KEYWORDS: Majorana, topological superconductivity, hard gap, InSb, semiconductor nanowire, hybrid device

A topological superconductor can host non-Abelian excitations, the so-called Majorana modes forming the basis of topological quantum computation.^{1–6} Both the non-Abelian property and the topological protection of Majoranas crucially rely on the energy gap provided by the superconducting pairing of electrons that separates the ground state from the higher energy excitations. For most material systems that can support such a topological state, pairing is artificially induced by proximity, where the host material is coupled to a superconductor in a hybrid device geometry.^{7–27} Accessing the topological properties in hybrid devices requires a negligible density of states within the induced superconducting gap, i.e.,

an induced hard gap, which can be attained by a homogeneous and barrier-free interface to the superconductor.^{28–32} However, achieving such interfaces remains an outstanding challenge for many material systems, constituting a major bottleneck for topological superconductivity. Here we engineer a high-quality interface between semiconducting InSb nanowires and superconducting NbTiN, resulting in an induced hard gap in the nanowire by improving the homogeneity of the hybrid interface

Received: February 8, 2017

Revised: March 23, 2017

Published: March 29, 2017

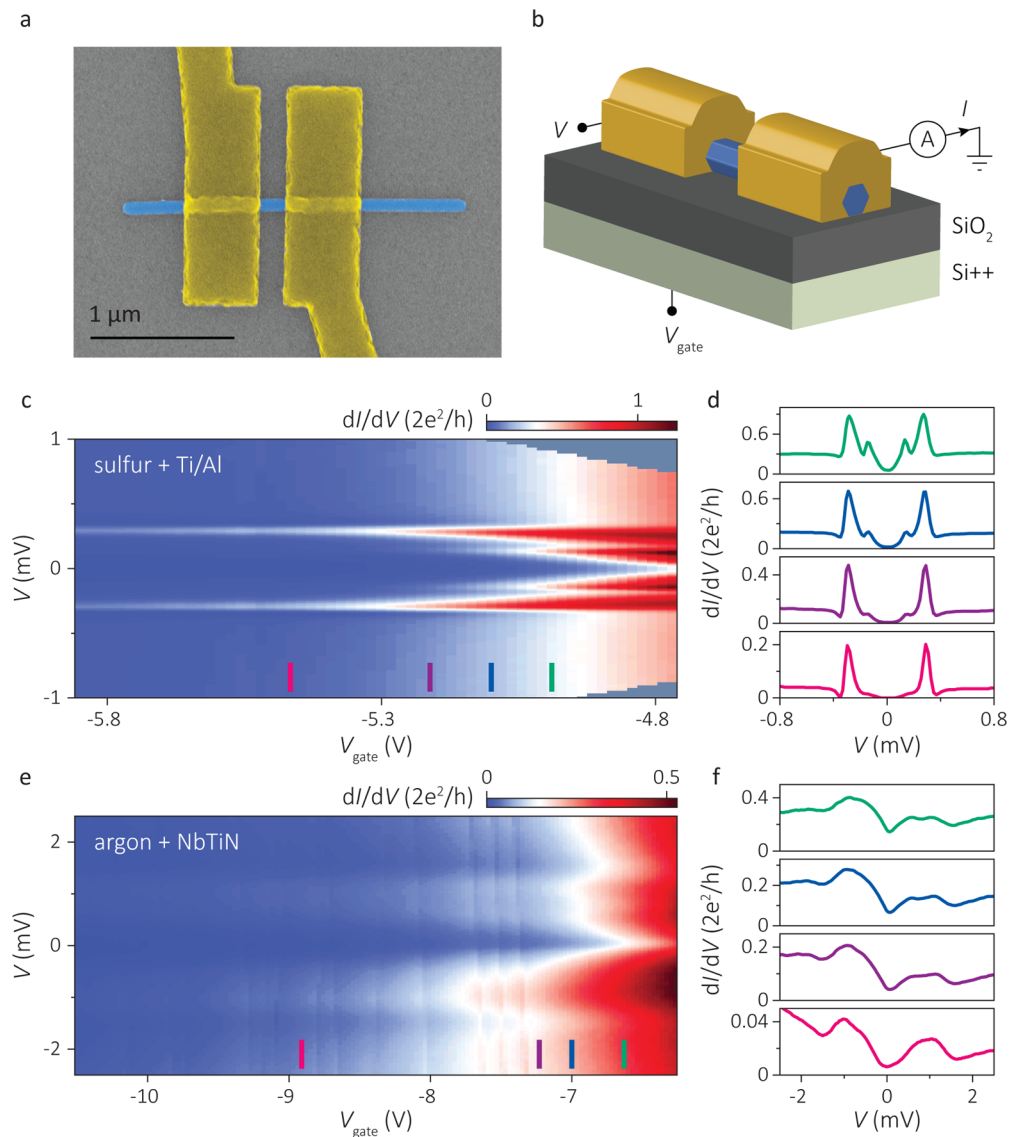


Figure 1. InSb nanowire hybrid device and induced superconducting gaps for different device realizations. (a) Top-view false-color electron micrograph of a typical device consisting of an InSb nanowire (blue) with a diameter ~ 80 nm coupled to two superconducting electrodes (yellow) with ~ 150 nm separation. (b) Schematic of the devices and the measurement setup with bias voltage V , monitored current I , and the voltage V_{gate} applied on back gate (Si $^{++}$ substrate) that is separated from the device by a 285 nm thick SiO $_2$ dielectric. (c, d) Spectroscopy of a device realized using sulfur cleaning followed by evaporation of superconducting Ti/Al (5/130 nm) electrodes. $T = 250$ mK. The differential conductance dI/dV is plotted as a function of bias voltage V for varying gate voltages V_{gate} . dI/dV traces in panel d are vertical line cuts from panel c at gate voltages marked with colored bars. dI/dV is symmetric around zero bias with two conductance peaks at $V \sim \pm 0.3$ mV seen for all gate voltages that result from the coherence peaks in the superconducting density of states at the edge of the induced gap Δ . For our device geometry with two superconducting electrodes $2\Delta \sim 0.3$ meV. For sufficiently low V_{gate} , where $dI/dV \ll 2e^2/h$ at above-gap bias ($V > 2\Delta$), tunnelling is weak, which suppresses the Andreev reflection probability revealing a hard induced gap. Larger gate voltages decrease the tunnel barrier height where increased Andreev reflection probability results in finite subgap conductance. (e, f) Spectroscopy of a device realized using argon cleaning followed by sputtering of superconducting NbTiN (90 nm) electrodes. $T = 250$ mK. We find $2\Delta \sim 1$ meV, much larger than that of the Al-based InSb hybrid device shown above. dI/dV traces in panel f show an above-gap conductance comparable to those in panel d. The induced gap is soft with a nonvanishing subgap conductance even for the weak tunnelling regime at low V_{gate} , indicating a deviation from Andreev transport.

while ensuring a barrier-free electrical contact to the superconductor. Our transport studies and materials characterization demonstrate that surface cleaning dictates the structural and electronic properties of the InSb nanowires and determines the induced superconductivity together with the wetting of the superconductor on the nanowire surface. We show that both the induced gap and the supercurrent in the nanowire withstands magnetic fields (~ 0.5 T), a requirement for topological superconductivity in one-dimensional systems.

InSb nanowires have emerged as a promising platform for topological superconductivity^{7,10,11,15,16} owing to a large spin-orbit coupling,^{33,34} a large g factor,^{35,36} and a high mobility.^{36–39} These ingredients, together with a high-quality interface to a magnetic field resilient s -wave superconductor, are necessary to maintain a finite topological gap in one dimension.^{4,5,40,41} The interface quality can be inferred using tunneling spectroscopy which resolves the induced superconducting gap for a tunnel barrier away from the interface. To date, tunneling spectroscopy studies on proximitized InSb

nanowires have reported a significant density of states within the superconducting gap, a so-called soft gap, suggesting an inhomogeneous interface.^{7,10,11,16} These subgap states destroy the topological protection by allowing excitations with arbitrarily small energy. Soft gaps have been observed also in other hybrid systems for cases where tunneling spectroscopy is applicable.^{8,12,42,43} For other cases, interface inhomogeneity is indirectly inferred from a decreased excess current or supercurrent due to a deviation from Andreev transport,⁴⁴ a common observation in hybrid systems.^{17,18,24} A hard gap has recently been realized in epitaxial InAs–Al materials^{29–32} and in Bi₂Se₃¹⁹ and Bi₂Te₃^{20,21} epitaxially grown on NbSe₂, where the interface inhomogeneity can be minimized. However, these studies do not provide further insight into the soft gap problem in material systems for which either epitaxy remains a challenge or when a high structural quality does not guarantee a barrier-free interface (e.g., due to carrier depletion). Here we tackle the soft gap problem in InSb nanowire devices by focusing on the constituents of a hybrid device realization which are crucial for the interface.

In general, realizing a hybrid device begins with surface preparation of the host material followed by the deposition of a superconductor. In host materials with low surface electron density or a small number of electronic subbands such as semiconductor nanowires, the correct surface preparation is of paramount importance to ensure a barrier-free coupling to the superconductor. Here we also adopt this procedure for our nanowires⁴⁵ whose native surface oxide forms an insulating layer that has to be removed. We describe the details of the nanowire growth, fabrication, and measurement setup in the Supporting Information (SI).

Figure 1a and b show a completed device with two lithographically defined superconducting electrodes having a small separation (~ 150 nm) on an InSb nanowire. A degenerately doped silicon substrate acts as a global back gate, tuning the carrier density in the wire. The small electrode separation allows us to electrostatically define a tunnel barrier in the wire section between the electrodes by applying negative gate voltages. Figure 1c and e shows the induced gaps measured by tunneling spectroscopy for two common realizations of an InSb nanowire hybrid device. For the device in Figure 1c, a sulfur-based solution⁴⁶ is used to clean the wire surface followed by evaporation of Ti/Al with Ti the wetting layer, whereas Figure 1e is from a device for which the wire surface is in situ cleaned using an argon plasma followed by sputtering of NbTiN. Figure 1d shows the conductance traces of the sulfur-Ti/Al device indicating a hard induced gap $2\Delta \sim 0.3$ meV for low gate voltages when decreased transmission suppresses Andreev reflection. In contrast, Figure 1f demonstrates that the argon-NbTiN device shows a soft induced gap even for the lowest gate voltages, but with a gap $2\Delta \sim 1$ meV inherited from NbTiN, a superconductor with a large gap and high critical field. Both device realizations present a challenge toward topological protection. In the first case, the magnetic field (~ 0.5 T) required to drive the wire into the topological state destroys the superconductivity of Al (Figure S1). Al can withstand such fields when it is very thin (< 10 nm) in the field plane; however, such thin Al films contacting a nanowire have so far only been achieved by epitaxy.^{13,14,30} In the NbTiN device prepared with argon cleaning, the subgap states render the topological properties experimentally inaccessible.

We now turn our attention to the surface of InSb nanowires prior to superconductor deposition. To determine the effects of

surface cleaning on transport, we characterized long-channel nanowire devices with ~ 1 μm electrode separation where the channel surface is cleaned using different methods, along with control devices with pristine channels (details in the SI). Figure 2 shows the measured conductance through the nanowire as a

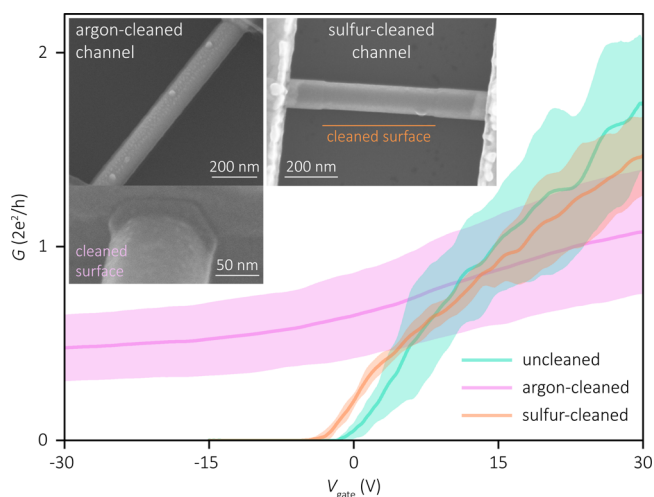


Figure 2. Effects of different surface cleaning on transport properties. Gate voltage dependent conductance G of InSb nanowire devices with ~ 1 μm electrode separation (channel length) for argon-cleaned (pink), sulfur-cleaned (orange), and uncleaned pristine (cyan) channels. $T = 4$ K. Traces represent ensemble-averaged conductance over 6 (argon-cleaned), 3 (sulfur-cleaned), and 2 (uncleaned) different devices measured at bias voltage $V = 10$ mV, with the shades indicating the standard deviation (see the SI for the details of averaging). Argon-cleaned channels do not pinch off, a deviation from a semiconducting gate response, and show a low transconductance $\propto dG/dV_{\text{gate}}$ indicating a low mobility. In contrast, sulfur-cleaned channels show a gate response similar to the pristine channel but with a shift of the threshold voltage toward negative values. Insets show high-resolution electron micrographs of argon- and sulfur-cleaned channels. Argon cleaning typically rounds the otherwise hexagonal cross section of the InSb nanowire (bottom image) and leaves a rough surface (top image). A sulfur cleaning yielding comparable contact resistances etches the InSb nanowire much less and leaves behind a smoother surface.

function of gate voltage, with the traces representing an average over different devices and the shades indicating the standard deviation. We find that the argon-cleaned channel behaves strikingly different than sulfur-cleaned and pristine channels. First, the argon-cleaned channel does not pinch off, showing a finite conductance even for lowest gate voltages, indicating a deviation from a semiconducting gate response. Second, it shows a lower transconductance $\propto dG/dV_{\text{gate}}$ compared to sulfur-cleaned and pristine channels indicating a low mobility. These observations are consistent with the formation of metallic In islands on the InSb surface after argon cleaning.⁴⁷ In contrast, the sulfur-cleaned channel shows a gate response similar to the pristine channel apart from a shift of the threshold voltage toward negative values. This behavior indicates a surface electron accumulation expected for III–V semiconductors treated with sulfur-based solutions.^{48–50} A close inspection of the cleaned channels reveals clear differences in nanowire surface morphology after argon and sulfur cleaning (Figure 2 inset). While argon cleaning created a roughness easily discernible under high-resolution electron microscope for different plasma parameters, we find that sulfur

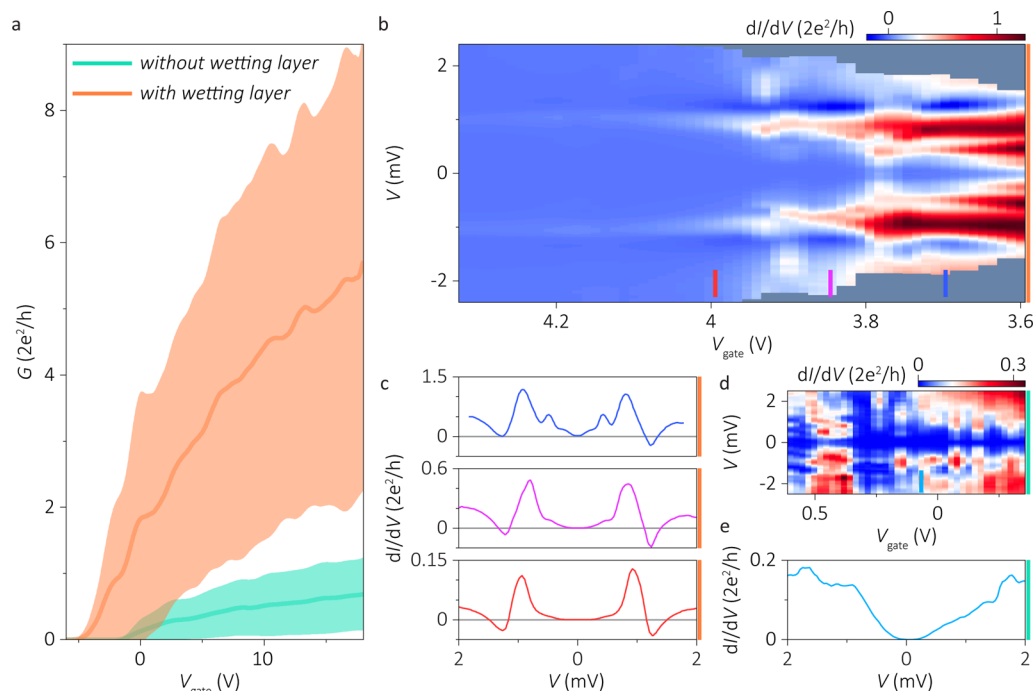


Figure 3. Effects of wetting layer on the transport and superconducting properties. (a) Gate voltage dependent conductance G of InSb nanowire devices with ~ 150 nm electrode separation realized with and without including a NbTi (5 nm) wetting layer between the nanowire and NbTiN (90 nm) electrodes. Native oxide on the nanowire surface is removed by sulfur cleaning prior to the deposition of the electrodes. Traces represent ensemble-averaged conductance over 4 (NbTi/NbTiN) and 7 (NbTiN) different devices measured at a bias voltage $V = 10$ mV, with the shades indicating the standard deviation (see the SI for the details of averaging). Inclusion of a NbTi wetting layer decreases the average contact resistance (including both contacts) from ~ 100 k Ω to ~ 1.6 k Ω (see the SI for the extraction of contact resistance). (b, c) Spectroscopy of a device realized with NbTi/NbTiN electrodes. Differential conductance dI/dV is plotted as a function of bias voltage V for varying gate voltages V_{gate} . dI/dV traces in panel c are vertical line cuts from panel b at gate voltages marked with colored bars. dI/dV is symmetric in bias with two peaks at $V \sim \pm 1$ mV seen for all gate voltages from which we find $2\Delta \sim 1$ meV. For low V_{gate} and away from quantum dot resonances the subgap conductance vanishes, revealing a hard induced gap. Larger gate voltages decrease the tunnel barrier height, where increased Andreev reflection probability results in finite subgap conductance. (d) Spectroscopy of a device realized with NbTiN electrodes without a NbTi wetting layer. The tunneling conductance is dominated by Coulomb blockade with irregular diamonds. An induced gap cannot be clearly identified. (e) A vertical line cut from panel d at $V_{\text{gate}} \sim -0.08$ V (indicated by a blue bar) with a conductance similar to the middle panel in panel c. dI/dV is not symmetric in bias, and coherence peaks are not visible. All data in this figure taken at $T = 250$ mK.

cleaning, which removes ~ 5 nm of the wire, leaves a smoother InSb surface. TEM studies on the cleaned wire surface confirm this observation (Figure S2). Comparable contact resistances between argon and sulfur cleaning were achievable (e.g., in Figure 1e and f) when the argon plasma significantly etches the nanowire surface (>15 nm), while different plasma parameters resulting in less etching gave consistently higher contact resistances. This indicates that a complete removal of the native oxide (~ 3 nm) does not guarantee a barrier-free interface to the superconductor for InSb nanowires, which could be related to the surface depletion of InSb previously reported for a (110) surface,⁵¹ the orientation of our nanowire facets. In the rest of the Letter we use sulfur cleaning to remove the native oxide on the nanowire surface prior to superconductor deposition.

Next, we investigate the wetting of the superconductor on the nanowire surface. Figure 3a shows the conductance averaged over different nanowire devices realized with and without a thin layer of NbTi (5 nm), a reactive metal deposited immediately before the NbTiN to ensure its wetting on the wire. The inclusion of a NbTi wetting layer substantially improves the contact resistance of the devices. Tunneling spectroscopy (Figure 3b–d) reveals the differences in superconducting properties of the devices with and without the wetting layer. Figure 3b shows an induced gap $2\Delta \sim 1$ meV for a device with NbTi wetting layer. Low gate voltages bring the

device into the tunneling regime revealing a hard gap, shown in Figure 3c. In contrast, Figure 3d and e show that omitting the wetting layer results in no clearly identifiable induced gap and a tunneling conductance dominated by Coulomb blockade with irregular diamonds. Finally, to verify the importance of the wetting of the superconductor on the wire surface we realized InSb–Al nanowire devices without a Ti wetting layer. These devices also showed very high contact resistances, while the inclusion of Ti wetting layer gave low contact resistances and a finite supercurrent (Figure S3), in addition to a hard gap shown in Figure 1c and d. In the SI we comprehensively discuss our observations related to the improvement due to inclusion of a wetting layer.

The devices prepared with sulfur cleaning and NbTi/NbTiN electrodes in Figure 3 did not show a supercurrent, a requirement for a nanowire-based topological quantum bit.^{52–55} We attribute the lack of a supercurrent to a residual interface barrier effective at small bias. This could be related to the ex situ nature of sulfur cleaning, leaving the wire surface exposed to ambient which cannot exclude adsorbents at the interface. To improve the small bias response of our devices, we perform an additional in situ argon cleaning of sufficiently low power to avoid a damage to the InSb nanowire surface. After including this low-power argon cleaning, we find a high yield of devices showing a finite supercurrent measured at 250 mK

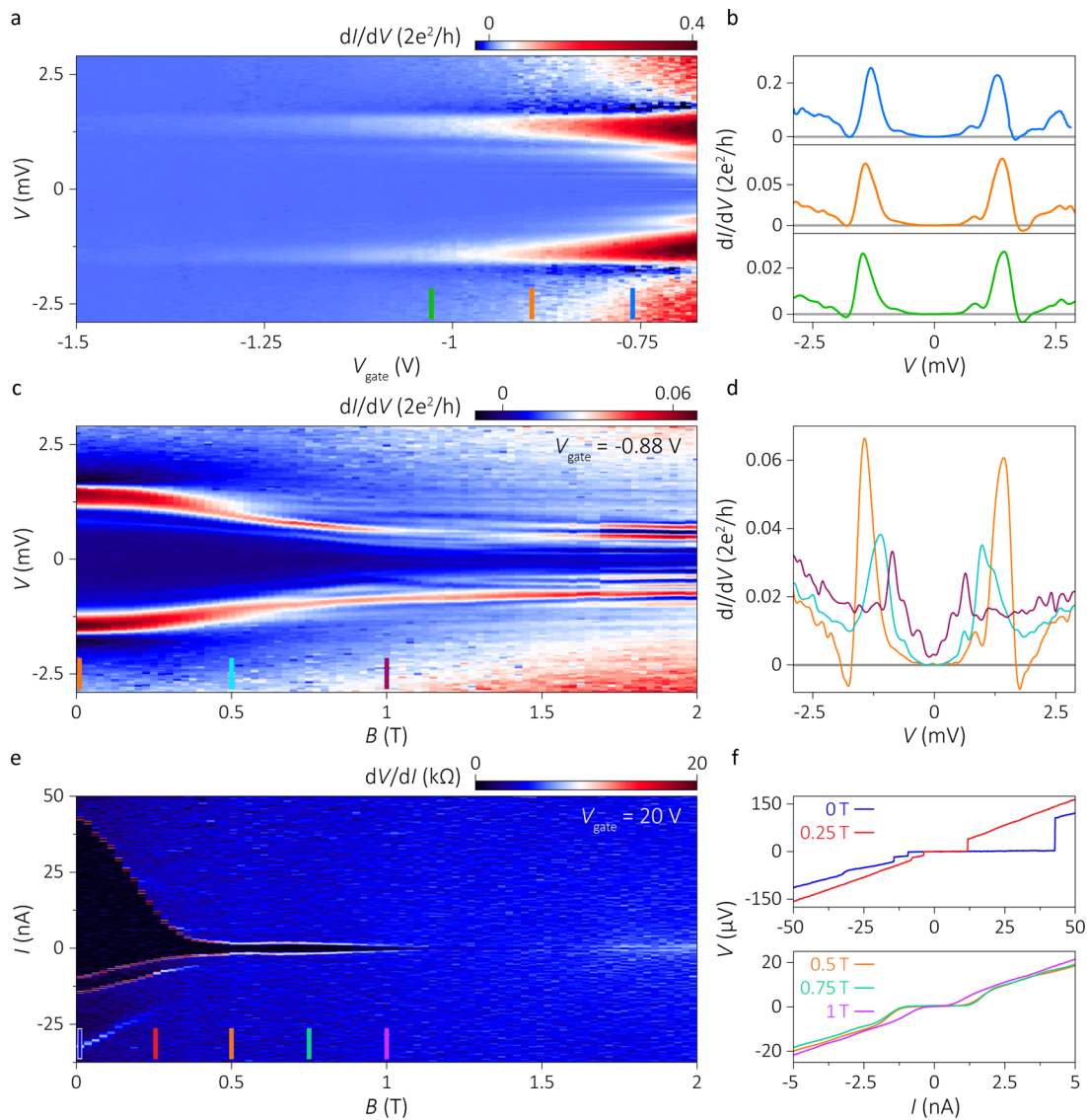


Figure 4. Tunneling spectroscopy and magnetic field response of InSb nanowire hybrid devices with engineered interface. (a, b) Spectroscopy of a device realized with NbTi/NbTiN electrodes using sulfur cleaning followed by an in situ low-power argon cleaning. Differential conductance dI/dV is plotted as a function of bias voltage V for varying gate voltages V_{gate} . dI/dV traces in panel b are vertical line cuts from panel a at gate voltages marked with colored bars. dI/dV is symmetric in bias with two peaks at $V \sim \pm 1.5$ mV seen for all gate voltages from which we find $2\Delta \sim 1.5$ meV. The induced gap is hard with vanishing subgap conductance in the tunneling regime. (c, d) dI/dV of the same device is plotted as a function of bias voltage V for an increasing magnetic field B along the nanowire. Gate voltage is set to $V_{\text{gate}} = -0.88$ V, the same as in the middle panel in panel b. dI/dV traces in panel d are vertical line cuts from panel c at magnetic fields marked with colored bars. The induced gap remains hard up to ~ 0.5 T. Increasing fields decrease the induced gap size and increase the subgap conductance, but induced superconductivity persists up to 2 T where dI/dV shows a gap feature with suppressed conductance at small bias and symmetrically positioned coherence peaks. (e) Differential resistance dV/dI of an identical device is plotted as a function of bias current I for an increasing magnetic field B along the nanowire. Dark regions with vanishing resistance indicate the supercurrent which remains finite up to 1 T. Gate voltage $V_{\text{gate}} = 20$ V. (f) Current–voltage traces from panel e at magnetic fields marked with colored bars. We find a switching current of ~ 40 nA at zero magnetic field, which decreases to ~ 10 nA at 0.25 T, and to ~ 0.5 nA at 1 T. Both devices in this figure have an electrode separation of ~ 150 nm. Data are taken at $T = 50$ mK.

(Figure S4). For another chip with 18 nanowire devices but measured at 50 mK, we find a clear supercurrent for all devices (Figure S5) while obtaining an induced gap $2\Delta \sim 1$ meV or larger (Figures S6 and S9).

Finally we study the magnetic field response of the optimized hybrid devices combining sulfur cleaning followed by an in situ low-power argon cleaning, and NbTi/NbTiN superconducting electrodes. Figure 4a and b shows the differential conductance for varying gate voltages at zero magnetic field measured at 50 mK (details in Figure S6). We find a hard gap $2\Delta \sim 1.5$ meV which confirms the noninvasiveness of our low-power cleaning.

The extracted conductance suppression at small bias compared to the above-gap conductance at large bias is ~ 100 (Figure S7). Next, we choose a gate voltage where the device is in the tunneling regime (orange trace in Figure 4b) and perform spectroscopy for increasing magnetic fields along the wire axis, shown in Figure 4c. In Figure 4d we plot the conductance traces taken at different magnetic fields showing an induced gap which remains hard up to ~ 0.5 T (see Figure S8 for a logarithmic plot). Increasing fields decrease the induced gap size and increase the subgap conductance, but a gap feature can be identified up to 2 T revealing the large critical field of

NbTiN. Figure 4e and f shows the critical current of another device as a function of magnetic field, measured at a large gate voltage when the nanowire is highly conducting (details in Figure S9). We find a critical current of ~ 40 nA at zero magnetic field which remains finite up to greater than 1 T. The nonmonotonous magnetic-field evolution of the critical current can be accounted for using a model which includes the Zeeman effect, spin-orbit coupling, and a realistic nanowire geometry in the few-channel, quasi-ballistic regime—the transport regime of our devices.⁵⁶

In conclusion, we have developed a method of obtaining a hard induced gap and supercurrent in InSb nanowires in the presence of magnetic fields (~ 0.5 T) by combining a noninvasive nanowire surface cleaning together with a wetting layer between the nanowire and the NbTiN superconductor. Our results provide a guideline for inducing superconductivity in semiconductor nanowires, two-dimensional electron gases, and topological insulators and hold relevance for topological superconductivity in various material systems.

■ ASSOCIATED CONTENT

Supporting Information

The Supporting Information is available free of charge on the ACS Publications website at DOI: 10.1021/acs.nanolett.7b00540.

Nanowire growth and device fabrication, fabrication details of the long-channel devices in Figure 2, measurement setup, details of ensemble averaging, extraction of contact resistance, discussion of the wetting layer, magnetic field response of the induced gap in InSb nanowire hybrid device with Ti/Al electrodes, cross-sectional transmission electron micrographs of the nanowire surface cleaned using different methods, additional transport properties of InSb nanowire hybrid devices with Ti/Al electrodes, supercurrent in InSb nanowire hybrid devices with NbTi/NbTiN electrodes at $T = 250$ mK, supercurrent in InSb nanowire hybrid devices with NbTi/NbTiN electrodes at $T = 50$ mK, additional transport properties of InSb nanowire hybrid device with engineered interface (device A), Figure 4b replotted in logarithmic conductance scale, Figure 4d replotted in logarithmic conductance scale, additional transport properties of InSb nanowire hybrid device with engineered interface (device B) (PDF)

■ AUTHOR INFORMATION

Corresponding Authors

*E-mail: gulonder@gmail.com.

*E-mail: L.P.Kouwenhoven@TUDelft.nl.

ORCID

Önder Gül: 0000-0002-3116-4054

Sebastian Koelling: 0000-0002-6606-9110

Diana Car: 0000-0002-6371-8285

Erik P. A. M. Bakkers: 0000-0002-8264-6862

Notes

The authors declare no competing financial interest.

■ ACKNOWLEDGMENTS

We thank S. Goswami and J. Shen for stimulating discussions and critical reading of the manuscript and D.B. Szombati for assistance in device fabrication. This work has been supported

by The Netherlands Organisation for Scientific Research (NWO), Foundation for Fundamental Research on Matter (FOM), European Research Council (ERC), Office of Naval Research (ONR N00014-16-1-2270), and Microsoft Corporation Station Q.

■ REFERENCES

- (1) Read, N.; Green, D. *Phys. Rev. B: Condens. Matter Mater. Phys.* **2000**, *61*, 10267.
- (2) Kitaev, A. Y. *Phys.-Usp.* **2001**, *44*, 131–136.
- (3) Fu, L.; Kane, C. L. *Phys. Rev. Lett.* **2008**, *100*, 096407.
- (4) Oreg, Y.; Refael, G.; von Oppen, F. *Phys. Rev. Lett.* **2010**, *105*, 177002.
- (5) Lutchyn, R. M.; Sau, J. D.; Sarma, S. D. *Phys. Rev. Lett.* **2010**, *105*, 077001.
- (6) Alicea, J.; Oreg, Y.; Refael, G.; von Oppen, F.; Fisher, M. P. *Nat. Phys.* **2011**, *7*, 412–417.
- (7) Mourik, V.; Zuo, K.; Frolov, S. M.; Plissard, S.; Bakkers, E.; Kouwenhoven, L. *Science* **2012**, *336*, 1003–1007.
- (8) Das, A.; Ronen, Y.; Most, Y.; Oreg, Y.; Heiblum, M.; Shtrikman, H. *Nat. Phys.* **2012**, *8*, 887–895.
- (9) Rokhinson, L. P.; Liu, X.; Furdyna, J. K. *Nat. Phys.* **2012**, *8*, 795–799.
- (10) Deng, M. T.; Yu, C. L.; Huang, G. Y.; Larsson, M.; Caroff, P.; Xu, H. Q. *Nano Lett.* **2012**, *12*, 6414–6419.
- (11) Churchill, H. O. H.; Fatemi, V.; Grove-Rasmussen, K.; Deng, M. T.; Caroff, P.; Xu, H. Q.; Marcus, C. M. *Phys. Rev. B: Condens. Matter Mater. Phys.* **2013**, *87*, 241401.
- (12) Finck, A. D. K.; Van Harlingen, D. J.; Mohseni, P. K.; Jung, K.; Li, X. *Phys. Rev. Lett.* **2013**, *110*, 126406.
- (13) Albrecht, S.; Higginbotham, A.; Madsen, M.; Kuemmeth, F.; Jespersen, T.; Nygård, J.; Krogstrup, P.; Marcus, C. *Nature* **2016**, *531*, 206–209.
- (14) Deng, M. T.; Vaitiekėnas, S.; Hansen, E. B.; Danon, J.; Leijnse, M.; Flensberg, K.; Nygård, J.; Krogstrup, P.; Marcus, C. M. *Science* **2016**, *354*, 1557–1562.
- (15) Zhang, H.; Gül, Ö.; Conesa-Boj, S.; Zuo, K.; Mourik, V.; de Vries, F. K.; van Veen, J.; van Woerkom, D. J.; Nowak, M. P.; Wimmer, M. et al. *arXiv:1603.04069*, **2016**.
- (16) Chen, J.; Yu, P.; Stenger, J.; Hocevar, M.; Car, D.; Plissard, S. R.; Bakkers, E. P. A. M.; Stanescu, T. D.; Frolov, S. M. *arXiv:1610.04555*, **2016**.
- (17) Hart, S.; Ren, H.; Wagner, T.; Leubner, P.; Mühlbauer, M.; Brüne, C.; Buhmann, H.; Molenkamp, L. W.; Yacoby, A. *Nat. Phys.* **2014**, *10*, 638–643.
- (18) Pribiag, V. S.; Beukman, A. J.; Qu, F.; Cassidy, M. C.; Charpentier, C.; Wegscheider, W.; Kouwenhoven, L. P. *Nat. Nanotechnol.* **2015**, *10*, 593–597.
- (19) Wang, M.-X.; Liu, C.; Xu, J.-P.; Yang, F.; Miao, L.; Yao, M.-Y.; Gao, C. L.; Shen, C.; Ma, X.; Chen, X.; et al. *Science* **2012**, *336*, 52–55.
- (20) Xu, J.-P.; Liu, C.; Wang, M.-X.; Ge, J.; Liu, Z.-L.; Yang, X.; Chen, Y.; Liu, Y.; Xu, Z.-A.; Gao, C.-L.; et al. *Phys. Rev. Lett.* **2014**, *112*, 217001.
- (21) Xu, J.-P.; Wang, M.-X.; Liu, Z. L.; Ge, J.-F.; Yang, X.; Liu, C.; Xu, Z. A.; Guan, D.; Gao, C. L.; Qian, D.; et al. *Phys. Rev. Lett.* **2015**, *114*, 017001.
- (22) Williams, J. R.; Bestwick, A. J.; Gallagher, P.; Hong, S. S.; Cui, Y.; Bleich, A. S.; Analytis, J. G.; Fisher, I. R.; Goldhaber-Gordon, D. *Phys. Rev. Lett.* **2012**, *109*, 056803.
- (23) Wiedenmann, J.; Bocquillon, E.; Deacon, R. S.; Hartinger, S.; Herrmann, O.; Klapwijk, T. M.; Maier, L.; Ames, C.; Brüne, C.; Gould, C.; et al. *Nat. Commun.* **2016**, *7*, 10303.
- (24) Bocquillon, E.; Deacon, R. S.; Wiedenmann, J.; Leubner, P.; Klapwijk, T. M.; Brüne, C.; Ishibashi, K.; Buhmann, H.; Molenkamp, L. W. *Nat. Nanotechnol.* **2017**, *12*, 137–143.
- (25) Wan, Z.; Kazakov, A.; Manfra, M. J.; Pfeiffer, L. N.; West, K. W.; Rokhinson, L. P. *Nat. Commun.* **2015**, *6*, 7426.

- (26) Pientka, F.; Keselman, A.; Berg, E.; Yacoby, A.; Stern, A.; Halperin, B. I. *arXiv:1609.09482*, **2016**.
- (27) Hell, M.; Leijnse, M.; Flensburg, K. *Phys. Rev. Lett.* **2017**, *118*, 107701.
- (28) Takei, S.; Fregoso, B. M.; Hui, H.-Y.; Lobos, A. M.; Sarma, S. D. *Phys. Rev. Lett.* **2013**, *110*, 186803.
- (29) Chang, W.; Albrecht, S.; Jespersen, T.; Kuemmeth, F.; Krogstrup, P.; Nygård, J.; Marcus, C. *Nat. Nanotechnol.* **2015**, *10*, 232–236.
- (30) Krogstrup, P.; Ziino, N.; Chang, W.; Albrecht, S.; Madsen, M.; Johnson, E.; Nygård, J.; Marcus, C.; Jespersen, T. *Nat. Mater.* **2015**, *14*, 400–406.
- (31) Kjaergaard, M.; Nichele, F.; Suominen, H.; Nowak, M.; Wimmer, M.; Akhmerov, A.; Folk, J.; Flensburg, K.; Shabani, J.; Palmström, C.; et al. *Nat. Commun.* **2016**, *7*, 12841.
- (32) Shabani, J.; Kjaergaard, M.; Suominen, H. J.; Kim, Y.; Nichele, F.; Pakrouski, K.; Stankevic, T.; Lutchny, R. M.; Krogstrup, P.; Feidenhans'l, R.; et al. *Phys. Rev. B: Condens. Matter Mater. Phys.* **2016**, *93*, 155402.
- (33) van Weperen, I.; Tarasinski, B.; Eeltink, D.; Pribiag, V. S.; Plissard, S. R.; Bakkers, E. P. A. M.; Kouwenhoven, L. P.; Wimmer, M. *Phys. Rev. B: Condens. Matter Mater. Phys.* **2015**, *91*, 201413.
- (34) Kammhuber, J.; Cassidy, M. C.; Pei, F.; Nowak, M. P.; Vuik, A.; Car, D.; Plissard, S. R.; Bakkers, E. P. A. M.; Wimmer, M.; Kouwenhoven, L. P. *arXiv:1701.06878*, **2017**.
- (35) van Weperen, I.; Plissard, S. R.; Bakkers, E. P. A. M.; Frolov, S. M.; Kouwenhoven, L. P. *Nano Lett.* **2013**, *13*, 387–391.
- (36) Kammhuber, J.; Cassidy, M. C.; Zhang, H.; Gül, Ö.; Pei, F.; de Moor, M. W. A.; Nijholt, B.; Watanabe, K.; Taniguchi, T.; Car, D.; et al. *Nano Lett.* **2016**, *16*, 3482–3486.
- (37) Gül, Ö.; van Woerkom, D. J.; van Weperen, I.; Car, D.; Plissard, S. R.; Bakkers, E. P. A. M.; Kouwenhoven, L. P. *Nanotechnology* **2015**, *26*, 215202.
- (38) Li, S.; Kang, N.; Fan, D.; Wang, L.; Huang, Y.; Caroff, P.; Xu, H. *Sci. Rep.* **2016**, *6*, 24822.
- (39) Gill, S.; Damasco, J.; Car, D.; Bakkers, E. P. A. M.; Mason, N. *Appl. Phys. Lett.* **2016**, *109*, 233502.
- (40) Potter, A. C.; Lee, P. A. *Phys. Rev. B: Condens. Matter Mater. Phys.* **2011**, *83*, 184520.
- (41) Sau, J. D.; Tewari, S.; Sarma, S. D. *Phys. Rev. B: Condens. Matter Mater. Phys.* **2012**, *85*, 064512.
- (42) Irie, H.; Todt, C.; Kumada, N.; Harada, Y.; Sugiyama, H.; Akazaki, T.; Muraki, K. *Phys. Rev. B: Condens. Matter Mater. Phys.* **2016**, *94*, 155305.
- (43) Su, Z.; Zarassi, A.; Nguyen, B.-M.; Yoo, J.; Dayeh, S. A.; Frolov, S. M. *arXiv:1610.03010*, **2016**.
- (44) Blonder, G.; Tinkham, M.; Klapwijk, T. *Phys. Rev. B: Condens. Matter Mater. Phys.* **1982**, *25*, 4515.
- (45) Car, D.; Wang, J.; Verheijen, M. A.; Bakkers, E. P. A. M.; Plissard, S. R. *Adv. Mater.* **2014**, *26*, 4875–4879.
- (46) Suyatin, D.; Thelander, C.; Björk, M.; Maximov, I.; Samuelson, L. *Nanotechnology* **2007**, *18*, 105307.
- (47) Bouslama, M.; Jardin, C.; Ghamnia, M. *Vacuum* **1995**, *46*, 143–146.
- (48) King, P.; Veal, T. D.; Lowe, M. J.; McConville, C. F. *J. Appl. Phys.* **2008**, *104*, 083709.
- (49) Petrovykh, D.; Yang, M.; Whitman, L. *Surf. Sci.* **2003**, *523*, 231–240.
- (50) Ho, J. C.; Ford, A. C.; Chueh, Y.-L.; Leu, P. W.; Ergen, O.; Takei, K.; Smith, G.; Majhi, P.; Bennett, J.; Javey, A. *Appl. Phys. Lett.* **2009**, *95*, 072108.
- (51) Gobeli, G.; Allen, F. *Phys. Rev.* **1965**, *137*, A245.
- (52) Hyart, T.; van Heck, B.; Fulga, I.; Burrello, M.; Akhmerov, A.; Beenakker, C. *Phys. Rev. B: Condens. Matter Mater. Phys.* **2013**, *88*, 035121.
- (53) Plugge, S.; Rasmussen, A.; Egger, R.; Flensburg, K. *New J. Phys.* **2017**, *19*, 012001.
- (54) Vijay, S.; Fu, L. *Phys. Rev. B: Condens. Matter Mater. Phys.* **2016**, *94*, 235446.
- (55) Karzig, T.; Knapp, C.; Lutchny, R.; Bonderson, P.; Hastings, M.; Nayak, C.; Alicea, J.; Flensburg, K.; Plugge, S.; Oreg, Y. et al. *arXiv:1610.05289*, **2016**.
- (56) Zuo, K.; Mourik, V.; Szombati, D. B.; Nijholt, B.; van Woerkom, D. J.; Geresdi, A.; Chen, J.; Ostroukh, V. P.; Akhmerov, A. R.; Plissard, S. R. et al. *in preparation*.