

Inventory of changes: 1990-2000-2013

Citation for published version (APA):

Bagheri, M., Henry, T. J., & Stuurman, T. M. (2013). *Inventory of changes: 1990-2000-2013*. (Cultural heritage and sustainability; Vol. 2). Technische Universiteit Eindhoven.

Document status and date:

Published: 01/01/2013

Document Version:

Publisher's PDF, also known as Version of Record (includes final page, issue and volume numbers)

Please check the document version of this publication:

- A submitted manuscript is the version of the article upon submission and before peer-review. There can be important differences between the submitted version and the official published version of record. People interested in the research are advised to contact the author for the final version of the publication, or visit the DOI to the publisher's website.
- The final author version and the galley proof are versions of the publication after peer review.
- The final published version features the final layout of the paper including the volume, issue and page numbers.

[Link to publication](#)

General rights

Copyright and moral rights for the publications made accessible in the public portal are retained by the authors and/or other copyright owners and it is a condition of accessing publications that users recognise and abide by the legal requirements associated with these rights.

- Users may download and print one copy of any publication from the public portal for the purpose of private study or research.
- You may not further distribute the material or use it for any profit-making activity or commercial gain
- You may freely distribute the URL identifying the publication in the public portal.

If the publication is distributed under the terms of Article 25fa of the Dutch Copyright Act, indicated by the "Taverne" license above, please follow below link for the End User Agreement:

www.tue.nl/taverne

Take down policy

If you believe that this document breaches copyright please contact us at:

openaccess@tue.nl

providing details and we will investigate your claim.



2

**Inventory of changes:
1990 - 2000 - 2013**

**Cultural Heritage and Sustainability:
Querétaro as case study**

Book 2 of 5

**by
Mahsa Bagheri
Thomas Henry
Tijmen Stuurman**

August 2013

- 1** The authenticity and integrity of the Historic Monuments Zone of Querétaro
by Mahsa Bagheri, Thomas Henry, Tijmen Stuurman
- 2** Inventory of changes: 1990 - 2000 - 2013
by Mahsa Bagheri, Thomas Henry, Tijmen Stuurman
- 3** Evolution of functions in the Historic Monuments Zone of Querétaro
A tourist-oriented approach
by Mahsa Bagheri
- 4** Urban development under World Heritage constraints
by Tijmen Stuurman
- 5** Facadism as an approach to redevelopment and conservation of World Heritage
by Thomas Henry

Inventory of changes: 1990 - 2000 - 2013

Research as part of the graduation studio 'Cultural Heritage and Sustainability: World Heritage cities as case study', as part of a research on sustainable development, carried out by the AUDE Unit (Architectural Urban Design and Engineering) of the Eindhoven University of Technology (TU/e).

August 2013

Graduation studio

Cultural Heritage and Sustainability: World Heritage cities as case study

Case study

Historic Monuments Zone of Querétaro, Santiago de Querétaro, Mexico

Authors:

Mahsa Bagheri
Eindhoven, the Netherlands
m.bagheri@student.tue.nl
<http://mahsabagheri.wix.com/mahsabagheri>

Thomas Henry
Eindhoven, the Netherlands
info@thomashenry.nl
www.thomashenry.nl

Tijmen Stuurman
Eindhoven, the Netherlands
st_tijmen@hotmail.com
www.student.tue.nl/y/t.m.stuurman/

Educational institution

Eindhoven University of Technology, Unit AUDE
Eindhoven, the Netherlands

Preface

The process and results of a research on Querétaro as a World Heritage case study, are presented in a series of five books. This research was carried out as part of the graduation studio 'Cultural Heritage and Sustainability: World Heritage cities as case study', as part of a research on sustainable development, carried out by the AUDE Unit (Architectural Urban Design and Engineering) of the Eindhoven University of Technology (TU/e). The studio focuses on the topic of Cultural Heritage and Sustainability, by taking World Heritage cities as case studies and is supervised by Prof. dr. B.J.F. (Bernard) Colenbrander, Dr. A.R. (Ana) Pereira Roders, L. (Loes) Veldpaus and P.C. (Paloma) Guzmán Molina.

This booklet is the second part of a series of five. This series explores the urban development of the Historic Monuments Zone of Querétaro and its cultural heritage in depth in order to provide adequate insights on sustainable development in a World Heritage city. The Historic Monuments Zone of Querétaro, inscribed as World Heritage property in 1996, is taken as case study by Mahsa Bagheri, Thomas Henry and Tijmen Stuurman.

The main aim of this booklet is to provide a photographic database of the historic monuments in Querétaro to be used by local authorities in Querétaro, as a source to help them in decision making processes on the Historic Monuments Zone of Querétaro and also by students for further studies on this property.

We would like to thank the supervisors of the studio of the TU/e and the staff in the Secretary of Urban Development and Public Spaces (SDUOP), IMPLAN and INAH for their help in accelerating this project by providing required data, during our three

month internship in Querétaro. Thanks also go to the University of Querétaro (UAQ) for providing accommodation. Special thanks go in particular to Ir. Manuel Vilarruel Vázquez (SDUOP), Luis Alejandro Morales Rodriguez and Leonor Monroy (IMPLAN) and Yanet Lezama-López (INAH) for contributing to our research and a pleasant time in the beautiful city of Querétaro.

Mahsa Bagheri
Thomas Henry
Tijmen Stuurman

Table of contents

1. Introduction	7
2. Blocks	8
Block 2	8
Block 3	12
Block 5	18
Block 6	26
Block 7	31
Block 8	42
Block 12	56
Block 13	62
Block 14	72
Block 15	78
Block 19	86
Block 20	100
Block 21	110
Block 22	116
Block 23	122
Block 24	126
Block 36	142
Block 37	146
Block 38	152
Block 39	158
Block 40	166
Block 42	170
Block 43	176
Block 44	182
Block 45	186
Block 46	192
Block 47	196
Block 50	204
3. References	214



1. Introduction

The Historic Monuments Zone of Querétaro (HMZQ) was included on the World Heritage List in 1996. The inscribed area covers 203 blocks comprising about 1400 monuments (IMPLAN, 2012). Two sets of catalogues were made by National Institute of Anthropology and History (INAH) on the monuments. One in 1990 and one in 2000, providing data including photos of the buildings in respective years.

A field research was carried out in 2013 on one sector of the HMZQ. In order to produce comparable data, including photos, available data in the catalogues has been used as a guide for producing new data during the fieldwork.

The present booklet provides a photo database presenting photos of 1990 and 2000 together with new ones taken in 2013. The area is composed of 31 building blocks of which 28 possess catalogued buildings. The catalogued buildings in each block are shown in the following chapters. In each chapter the geographical location of each block within the area is illustrated first. Each plot has an ID number, also shown in a separate map.



map 01. Overview of the research area - sector G

1:5000

 block definition

 catalogued buildings

 HMZQ

 Surroundings

 sector G

Block 2



map 02. Overview of the research area - sector G
1:5000

 block definition

 HMZQ

 Surroundings

 sector G



map 03. Block 2
1:1000

 plot definition

 catalogued buildings

 HMZQ

 Surroundings

 sector G



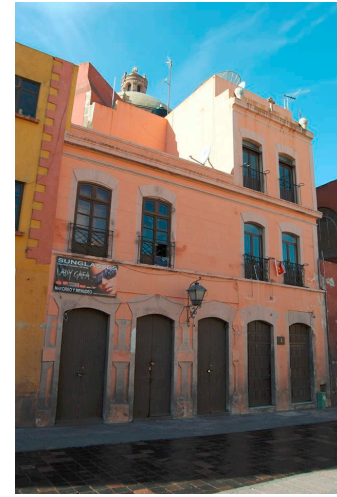
1990

Plot 2.04

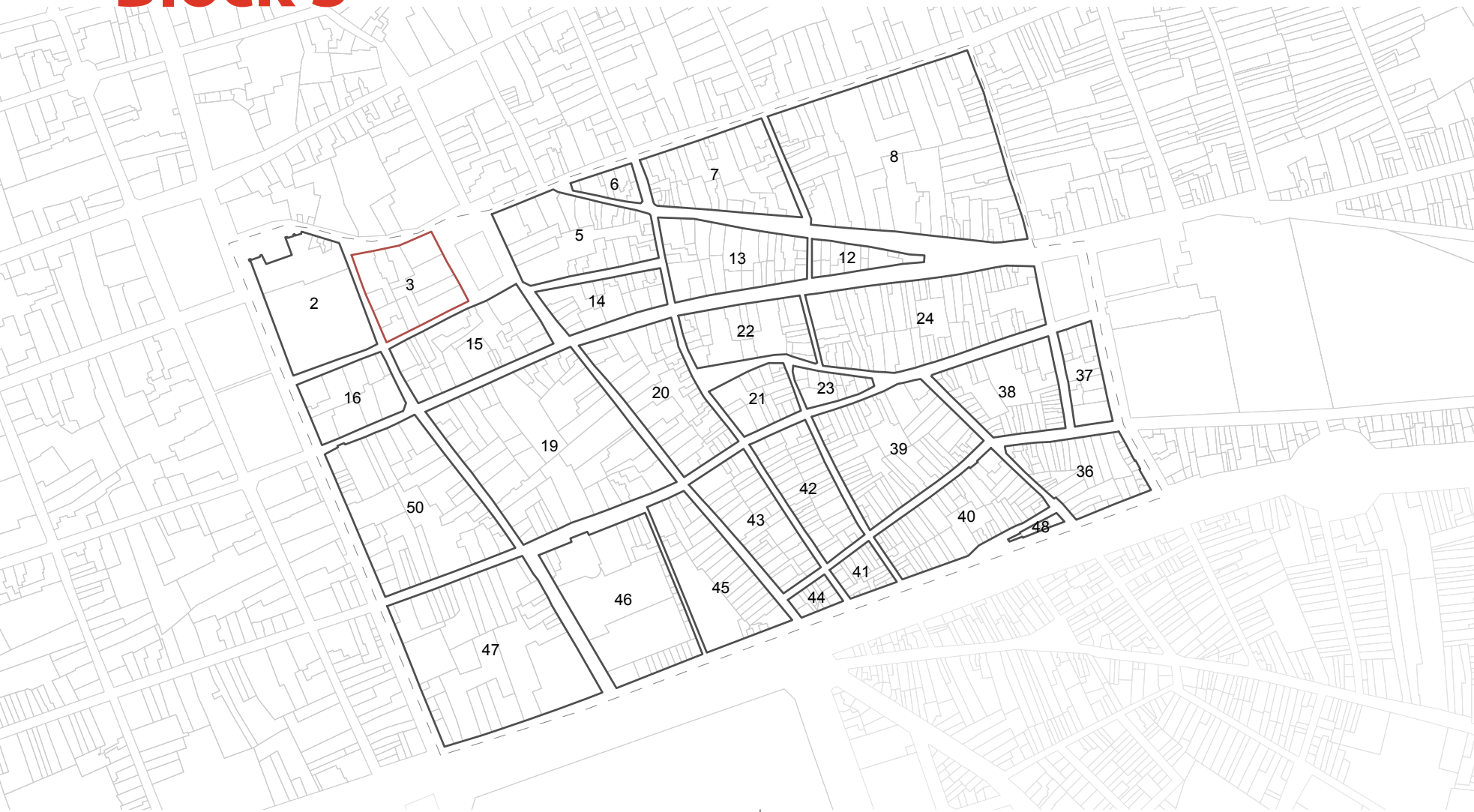
2000



2013



Block 3



map 04. Overview of the research area - sector G
1:5000

3 block definition

HMZQ
Surroundings
sector G



map 05. Block 3
1:1000

3 plot definition

catalogued buildings
HMZQ
Surroundings
sector G



1990

Plot 3.01



2000



2013



Plot 3.02



Plot 3.03



1990



2000



2013



Plot 3.04



Plot 3.05



Plot 3.06

1990

Plot 3.07



2000



2013



Plot 3.08



Plot 3.09



1990



2000



2013



Plot 3.10



Plot 3.11

Block 5



map 06. Overview of the research area - sector G
1:5000





 block definition

 HMZQ
 Surroundings
 sector G



map 07. Block 5
1:1000

 plot definition

 catalogued buildings
 HMZQ
 Surroundings
 sector G

1990

Plot 5.01



2000



2013



Plot 5.02



Plot 5.03



1990



2000



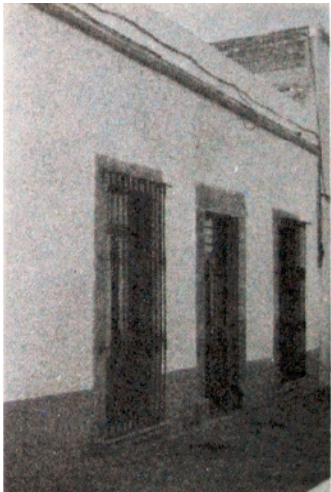
2013



Plot 5.04



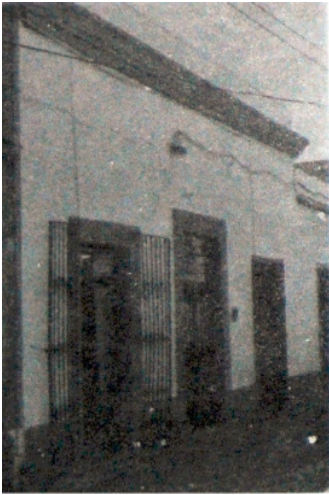
Plot 5.05



Plot 5.08

1990

Plot 5.09



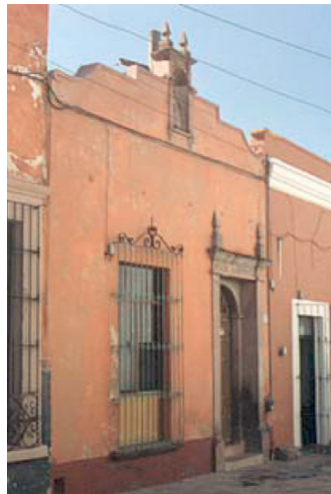
2000



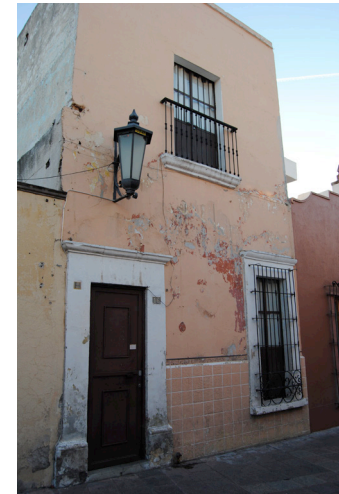
2013



Plot 5.10



Plot 5.11



1990

2000

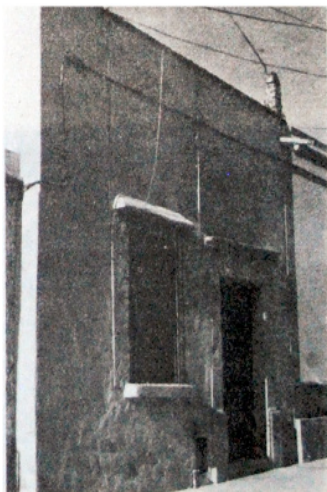
2013



Plot 5.15



Plot 5.16



Plot 5.17

1990

Plot 5.19



2000



2013



Plot 5.20



Plot 5.24



1990



2000



2013



Plot 5.25



Plot 5.26

Block 6



map 08. Overview of the research area - sector G
1:5000





 block definition

 HMZQ
 Surroundings
 sector G



map 09. Block 6
1:1000

 plot definition

 catalogued buildings
 HMZQ
 Surroundings
 sector G



1990

Plot 6.07

2000

2013



Block 7



map 10. Overview of the research area - sector G
1:5000

 block definition

 HMZQ

 Surroundings

 sector G



map 11. Block 7
1:1000

 plot definition

 catalogued buildings

 HMZQ

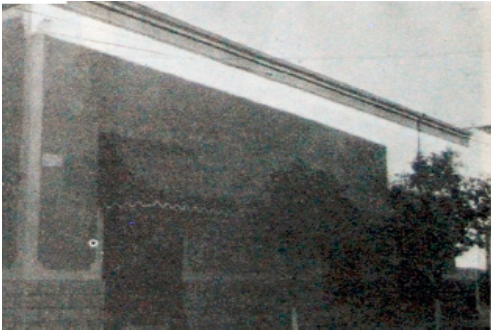
 Surroundings

 sector G



1990

Plot 7.01



2000



2013



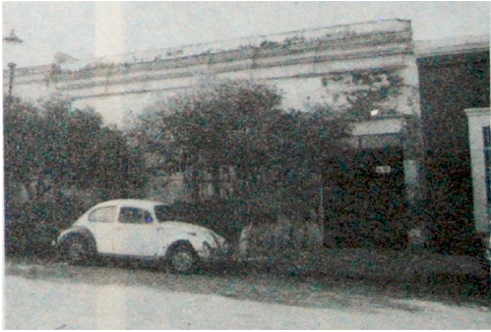
Plot 7.02



Plot 7.03



1990



2000



2013



Plot 7.04



Plot 7.05



Plot 7.06

1990

Plot 7.09

2000



2013



Plot 7.10



Plot 7.11



1990



2000



2013



Plot 7.12



Plot 7.13



Plot 7.14

1990

Plot 7.15

2000



2013



Plot 7.16



Plot 7.17



1990



2000



2013



Plot 7.18



Plot 7.19



Plot 7.20

1990

Plot 7.21



2000



2013



Plot 7.22



Plot 7.23



1990

2000

2013



Plot 7.24



Plot 7.25



Plot 7.27

1990

Plot 7.28

2000



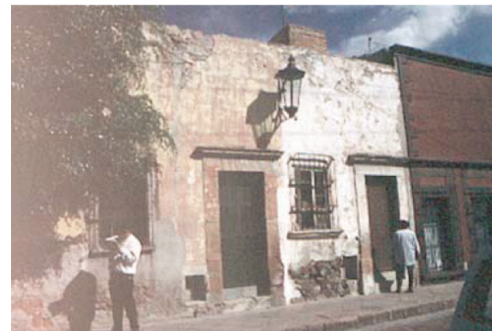
2013



Plot 7.30



Plot 7.31



1990

2000

2013



Plot7.31

Block 8



map 12. Overview of the research area - sector G
1:5000

 block definition

 HMZQ

 Surroundings

 sector G



map 13. Block 8
1:1000

 plot definition

 catalogued buildings

 HMZQ

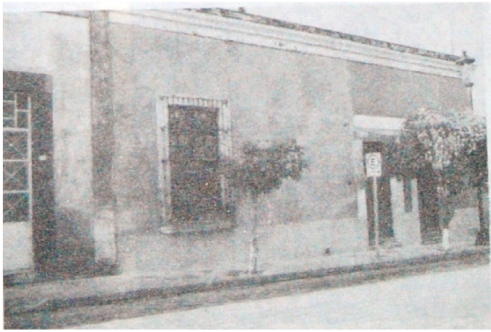
 Surroundings

 sector G



1990

Plot 8.01



2000



2013



Plot 8.02



Plot 8.03



1990



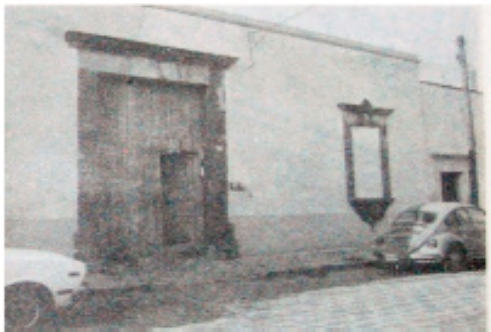
2000



2013



Plot 8.04



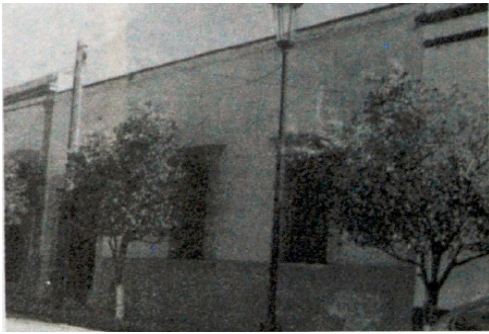
Plot 8.05



Plot 8.06

1990

Plot 8.07



2000



2013



Plot 8.08



Plot 8.09



1990



2000



2013



Plot 8.10



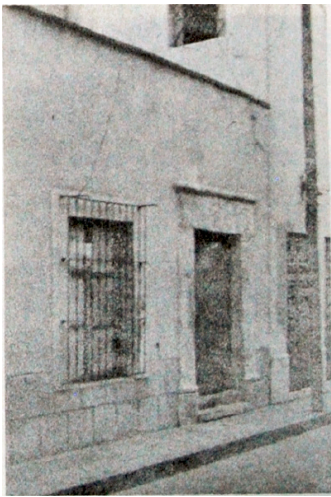
Plot 8.14



Plot 8.15

1990

Plot 8.18



2000



2013



Plot 8.19



Plot 8.20



1990



2000



2013



Plot 8.22



Plot 8.25



Plot 8.27

1990

Plot 8.28



2000



2013



Plot 8.33



Plot 8.36



1990



2000



2013



Plot 8.39

Plot 8.43

Plot 8.44

1990

Plot 8.45



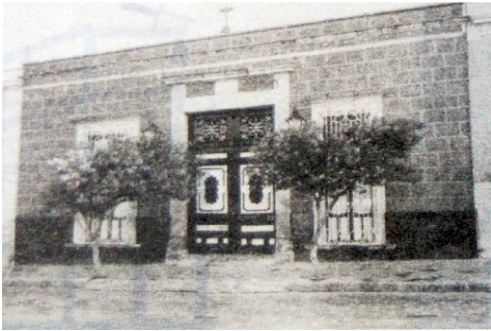
2000



2013



Plot 8.46



Plot 8.47



1990

2000

2013



Plot 8.49



Plot 8.50



Plot 8.52

1990

Plot 8.53



2000



2013



Plot 8.54



Plot 8.58



1990

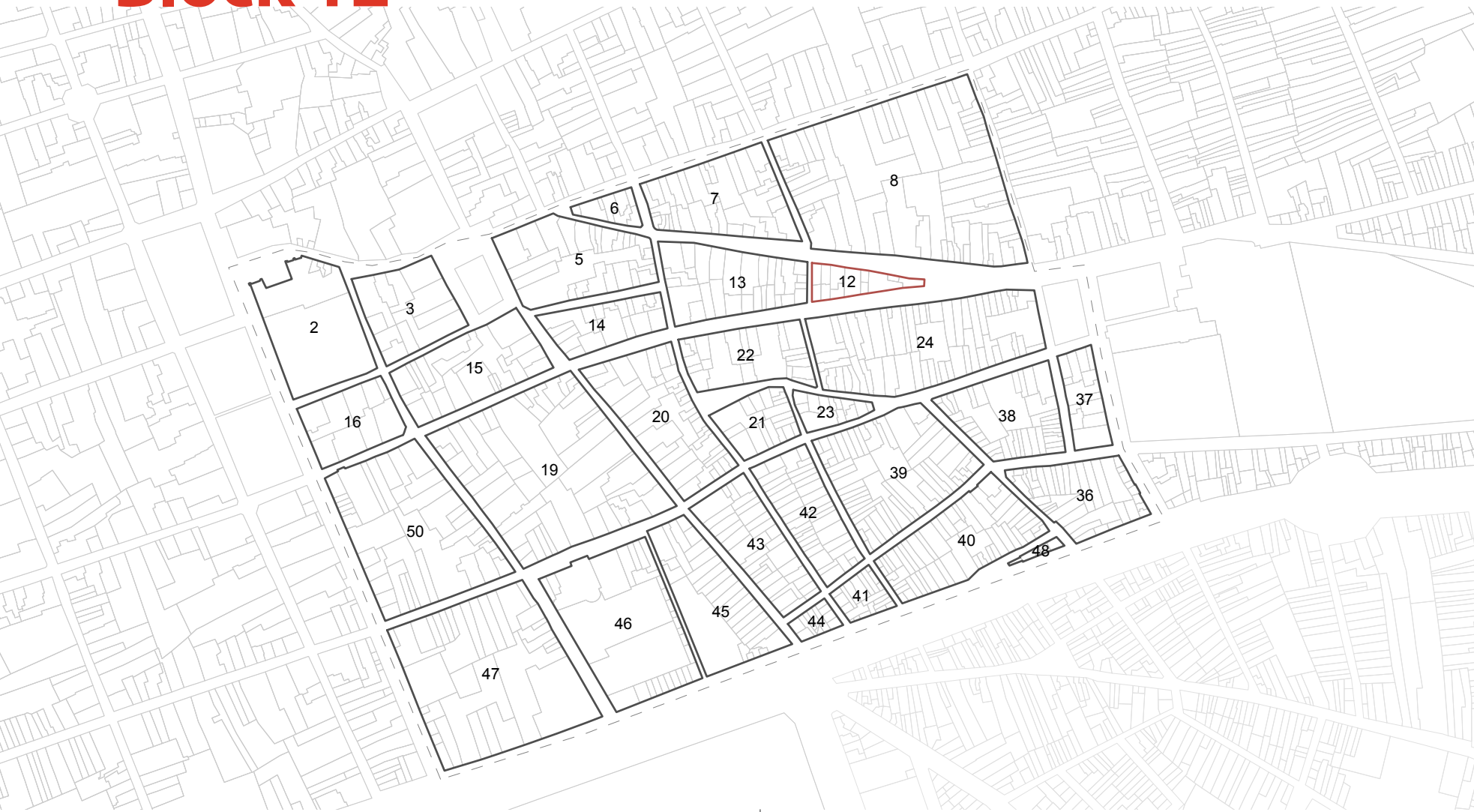
2000

2013



Plot 8.59

Block 12



map 14. Overview of the research area - sector G
1:5000

 block definition

 HMZQ

 Surroundings

 sector G



map 15. Block 12
1:1000

 plot definition

 catalogued buildings

 HMZQ

 Surroundings

 sector G



1990

Plot 12.01



2000



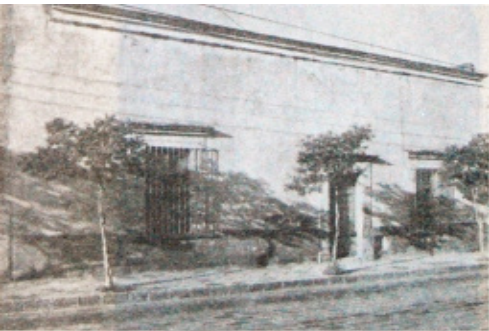
2013



Plot 12.02



Plot 12.03



1990



2000



2013



Plot 12.04



Plot 12.05



Plot 12.06

1990

Plot 12.08



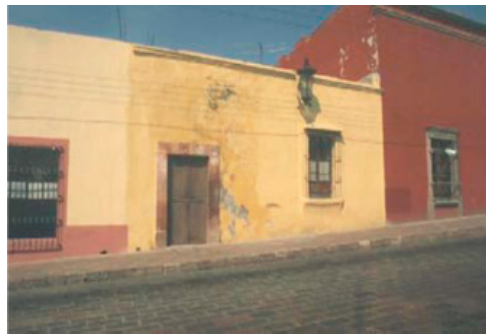
2000



2013



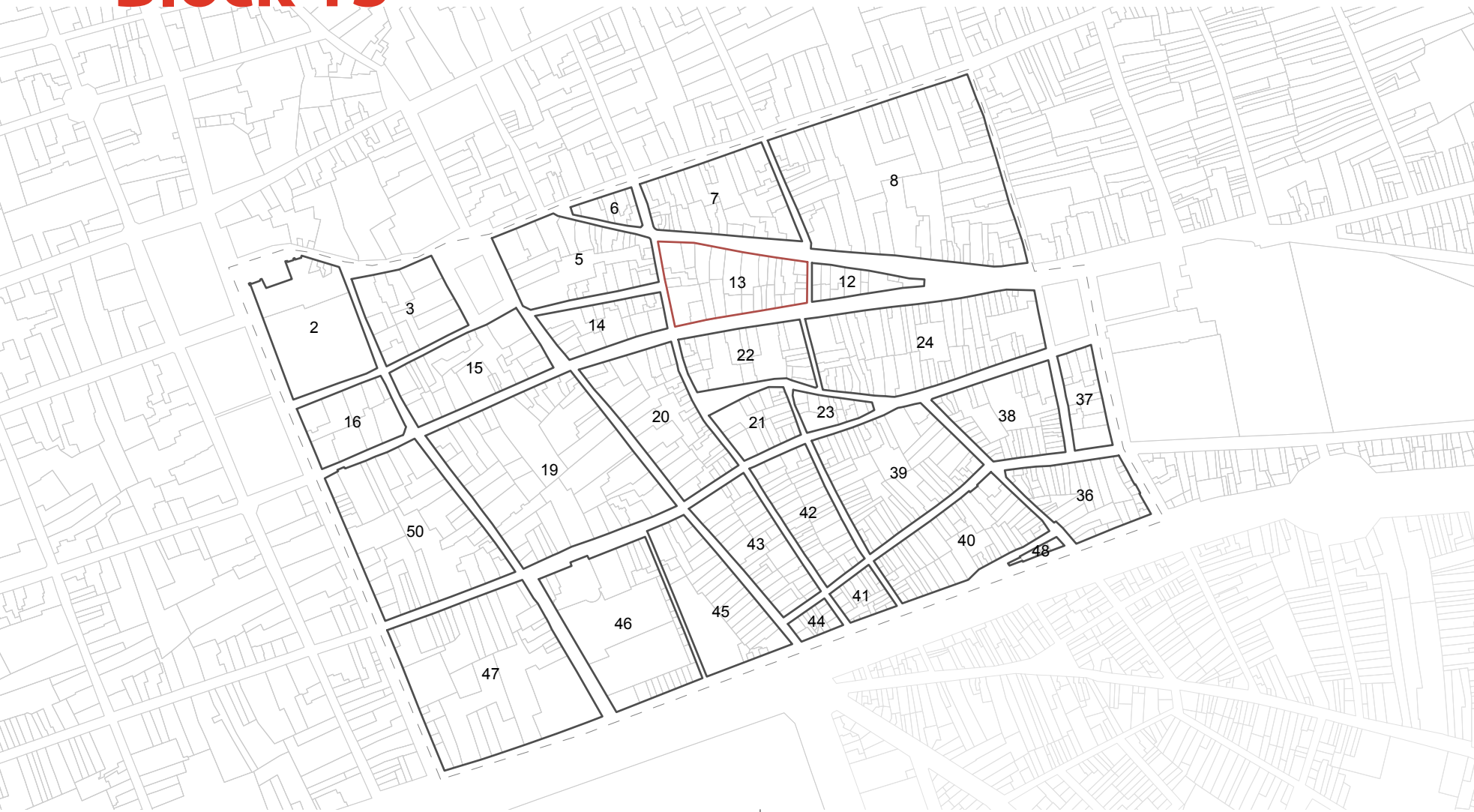
Plot 12.10



Plot 12.11



Block 13



map 16. Overview of the research area - sector G
1:5000

 block definition

 HMZQ

 Surroundings

 sector G



map 17. Block 13
1:1000

 plot definition

 catalogued buildings

 HMZQ

 Surroundings

 sector G



1990

Plot 13.01



2000



2013



Plot 13.02



Plot 13.04



1990



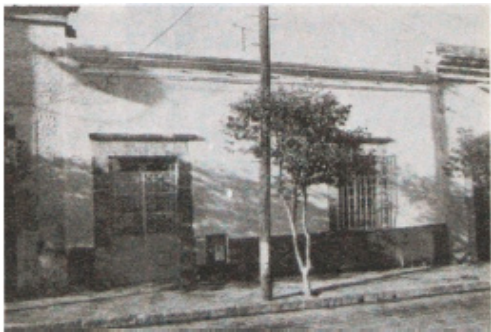
2000



2013



Plot 13.05



Plot 13.06



Plot 13.07

1990

Plot 13.09



2000



2013



Plot 13.10



Plot 13.11



1990



2000



2013



Plot 13.13



Plot 13.14



Plot 13.16

1990

Plot 13.17



2000

2013



Plot 13.18



Plot 13.19



1990

2000

2013



Plot 13.20



Plot 13.21



Plot 13.22

1990

Plot 13.23

2000



2013



Plot 13.24



Plot 13.27



1990

2000

2013

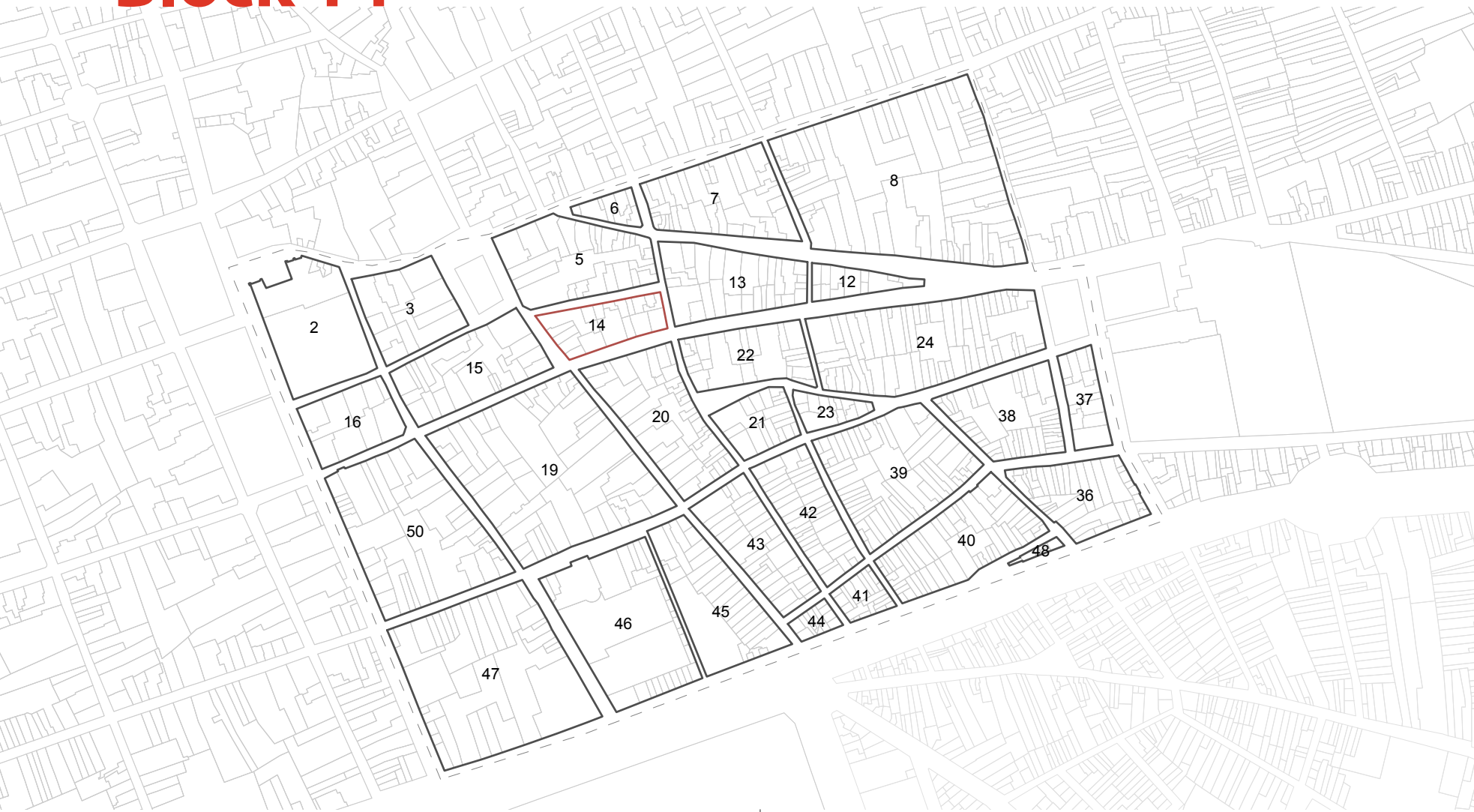


Plot13.28



Plot 13.29

Block 14



map 18. Overview of the research area - sector G
1:5000

 block definition

 HMZQ
 Surroundings
 sector G



map 19. Block 14
1:1000

 plot definition

 catalogued buildings
 HMZQ
 Surroundings
 sector G



1990

Plot 14.01



2000



2013



Plot 14.04



Plot 14.09



1990



2000



2013



Plot 14.10



Plot 14.11



Plot 14.13

1990

Plot 14.14



2000



2013



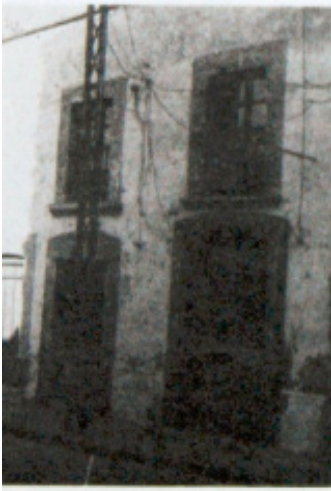
Plot 14.15



Plot 14.16



1990



2000



2013

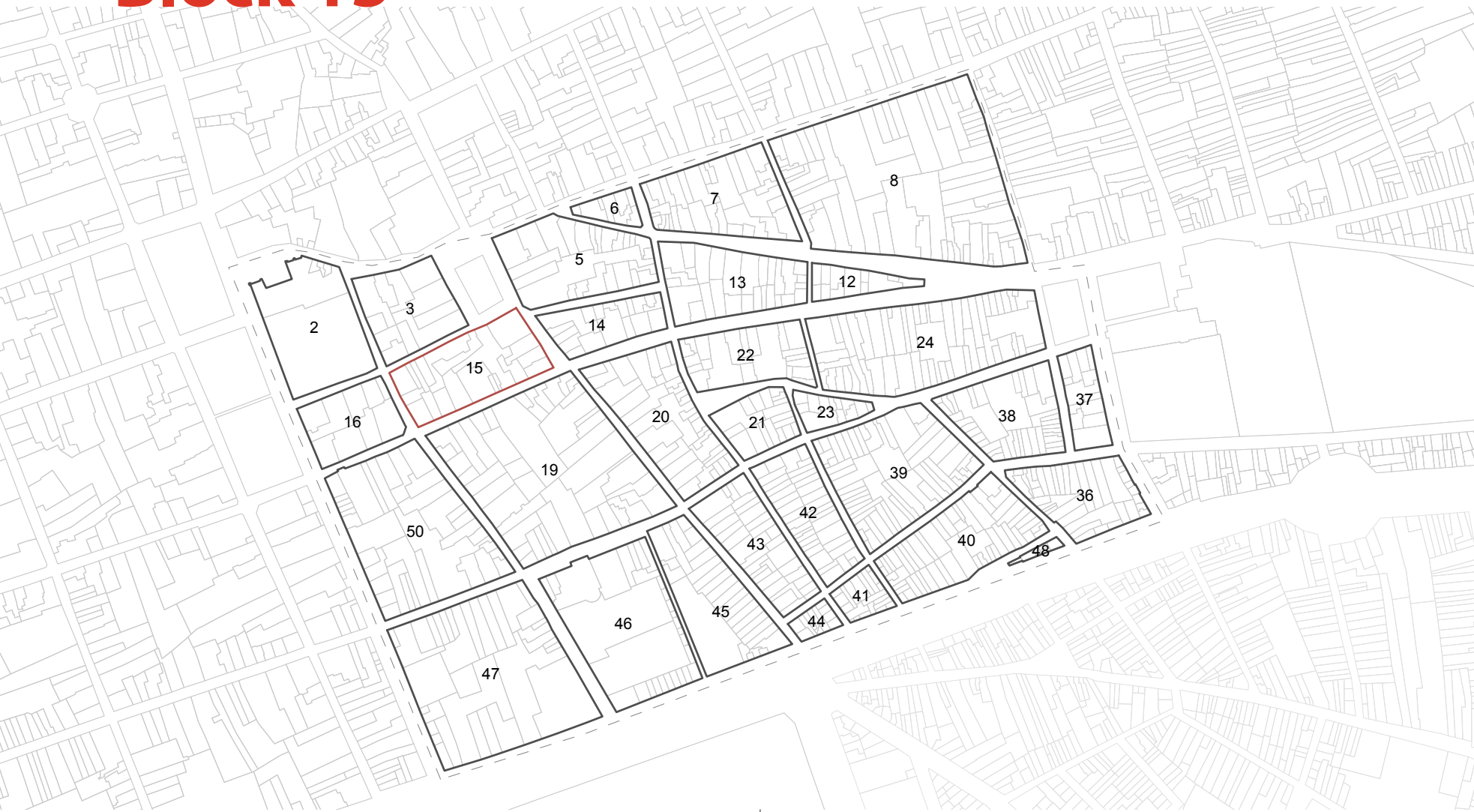


Plot 14.17



Plot 14.18

Block 15



map 20. Overview of the research area - sector G
1:5000

3 block definition

HMZQ

Surroundings

sector G



map 21. Block 15
1:1000

3 plot definition

catalogued buildings

HMZQ

Surroundings

sector G



1990

Plot 15.01



2000



2013



Plot 15.02



Plot 15.03



1990



2000



2013



Plot 15.04



Plot 15.05



Plot 15.07

1990

Plot 15.08



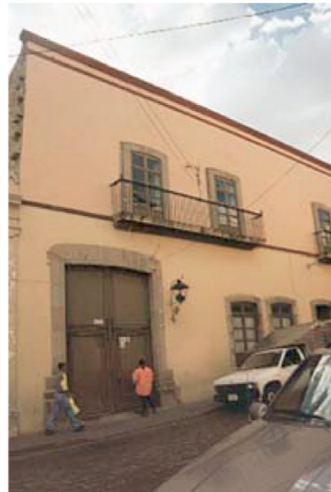
2000



2013



Plot 15.09



Plot 15.10



1990



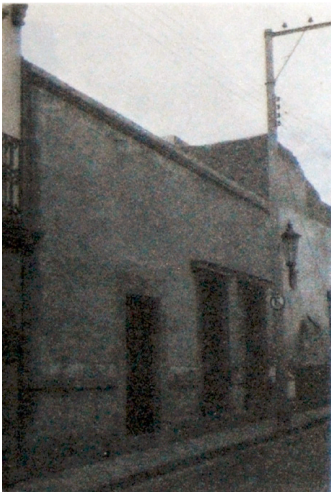
2000



2013



Plot 15.11



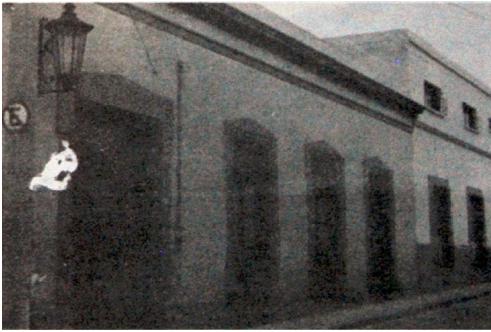
Plot 15.12



Plot 15.18

1990

Plot 5.19



2000



2013



Plot 5.20



Plot 5.22



Block 19



map 22. Overview of the research area - sector G
1:5000

 block definition

 HMZQ

 Surroundings

 sector G



map 23. Block 19
1:1000

 plot definition

 catalogued buildings

 HMZQ

 Surroundings

 sector G



1990

Plot 19.02

2000



2013



Plot 19.03



Plot 19.06



1990



2000



2013



Plot 19.07



Plot 19.08



Plot 19.09

1990

Plot 19.10



2000



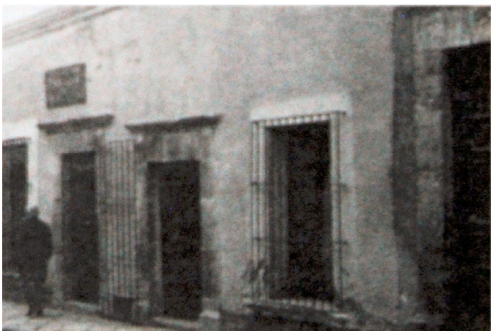
2013



Plot 19.12



Plot 19.13



1990



2000



2013



Plot 19.14



Plot 19.15



Plot 19.16

1990

Plot 19.17



2000



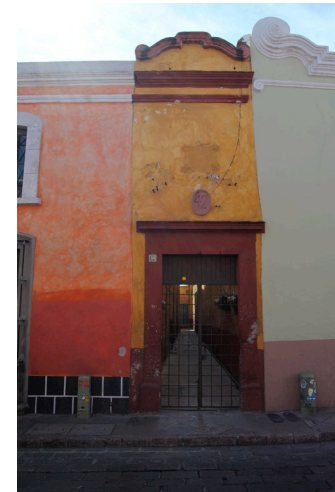
2013



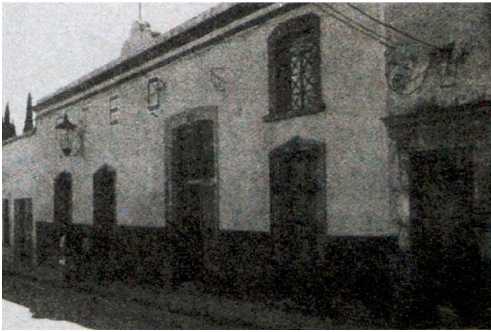
Plot 19.18



Plot 19.19



1990



2000



2013



Plot 19.20



Plot 19.22



Plot 19.23

1990

Plot 19.24



2000



2013



Plot 19.25



Plot 19.26



1990

2000

2013



Plot 19.27



Plot 19.28



Plot 19.29

1990

Plot 19.30



2013



Plot 19.31



Plot 19.32



1990



2000



2013



Plot 19.33



Plot 19.34



Plot 19.35

1990

Plot 19.36



2000



2013



Plot 19.38



Plot 19.39



1990



2000



2013



Plot 19.40



Plot 19.41

Block 20



map 24. Overview of the research area - sector G
1:5000

 block definition

 HMZQ

 Surroundings

 sector G



map 25. Block 20
1:1000

 plot definition

 catalogued buildings

 HMZQ

 Surroundings

 sector G



1990

Plot 20.01

2000



2013



Plot 20.02



Plot 20.03



1990

2000

2013



Plot 20.04



Plot 20.05



Plot 20.06

1990

Plot 20.08



2000

2013



Plot 20.10



Plot 20.11



1990



2000



2013



Plot 20.12



Plot 20.18



Plot 20.21

1990

Plot 20.24

2000



2013



Plot 20.25



Plot 20.26



1990



2000



2013



Plot 20.27



Plot 20.30



Plot 20.31

1990

Plot 20.32

2000



2013



Plot 20.33



Plot 20.34



1990



2000

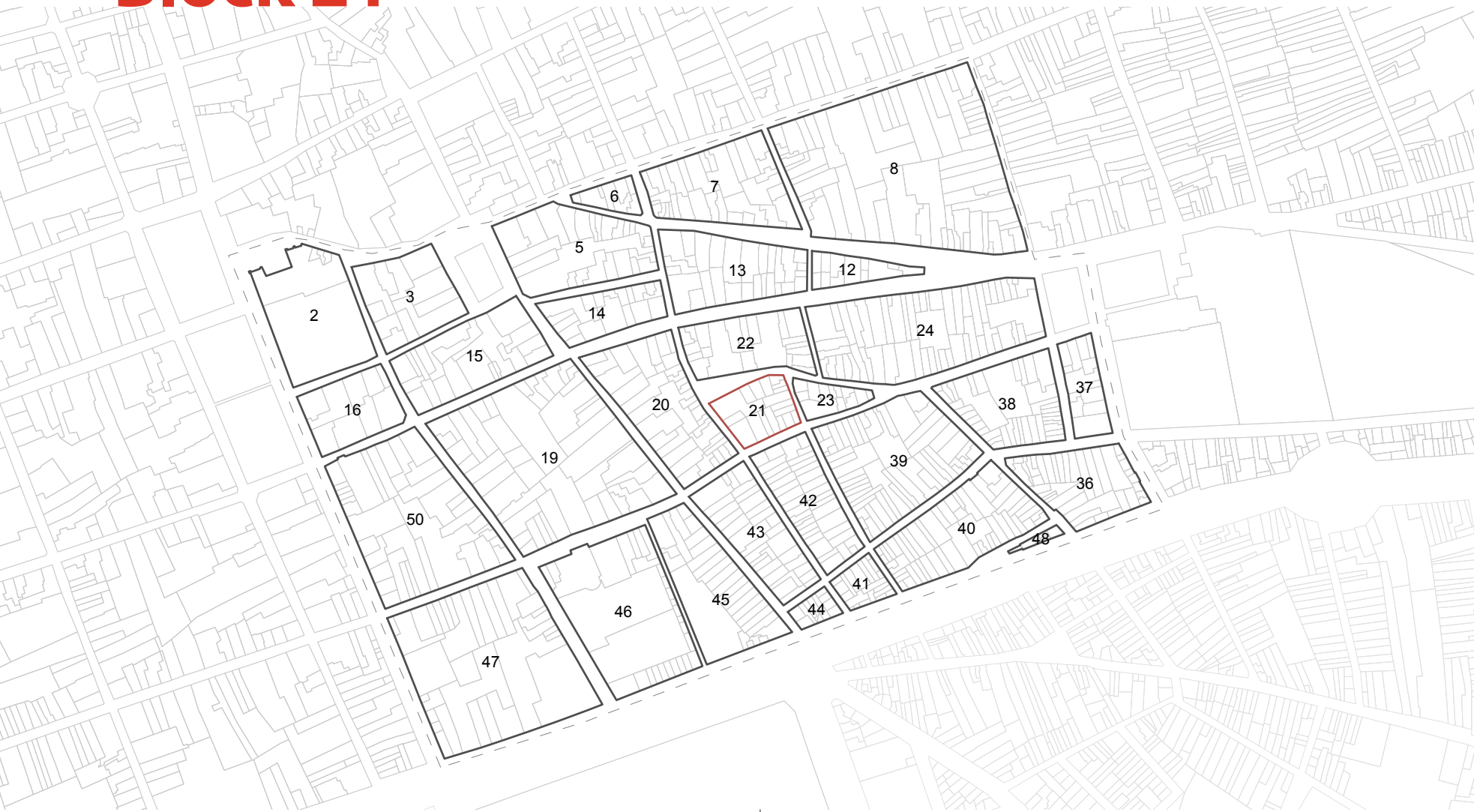


2013



Plot 20.35

Block 21



map 26. Overview of the research area - sector G
1:5000

 block definition

 HMZQ

 Surroundings

 sector G




map 27. Block 21
1:1000

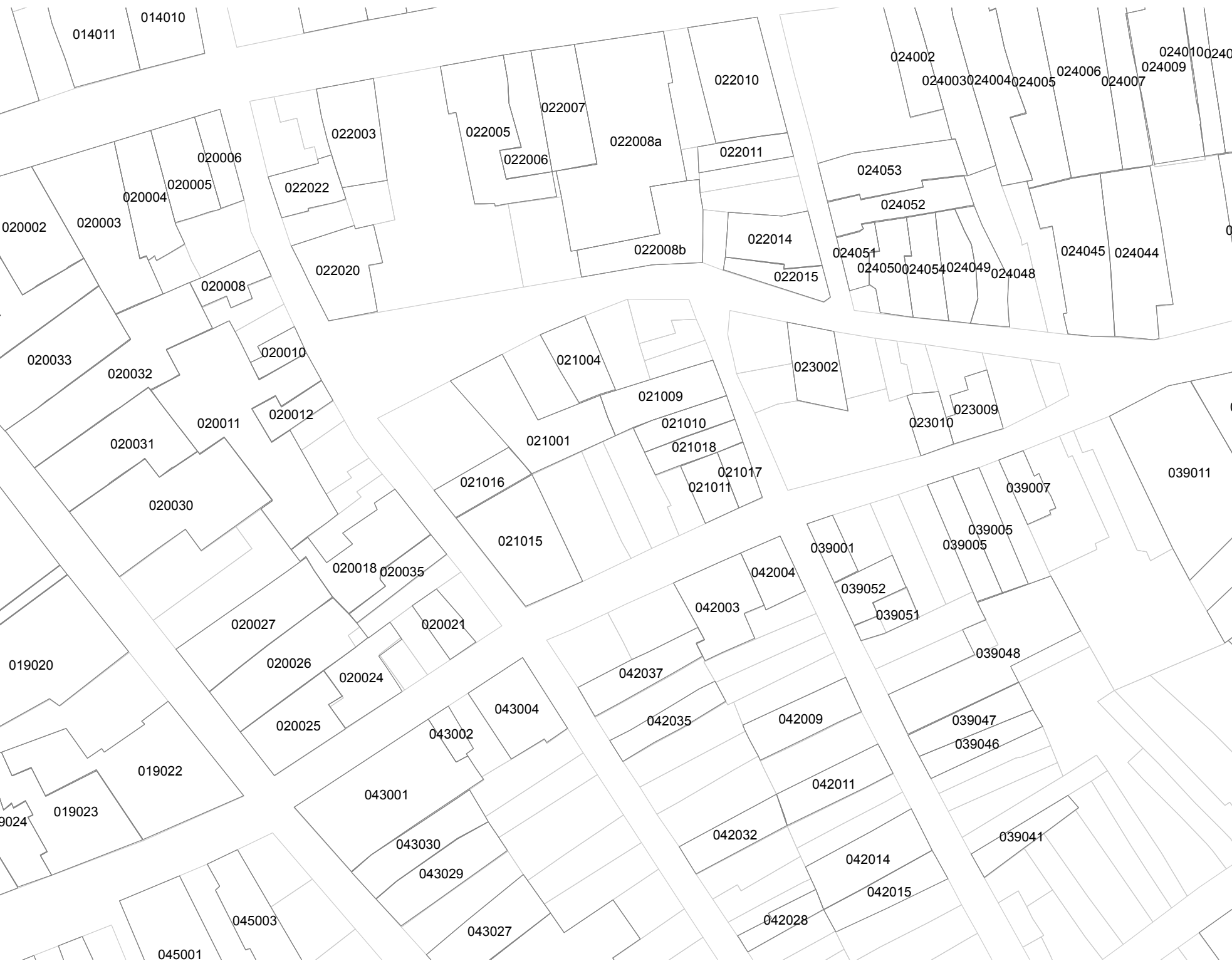
 plot definition

 catalogued buildings

 HMZQ

 Surroundings

 sector G



1990

Plot 21.01



2000



2013



Plot 21.04



Plot 21.09



1990

2000

2013



Plot 21.10



Plot 21.11



Plot 21.15

1990

Plot 21.16

2000



2013



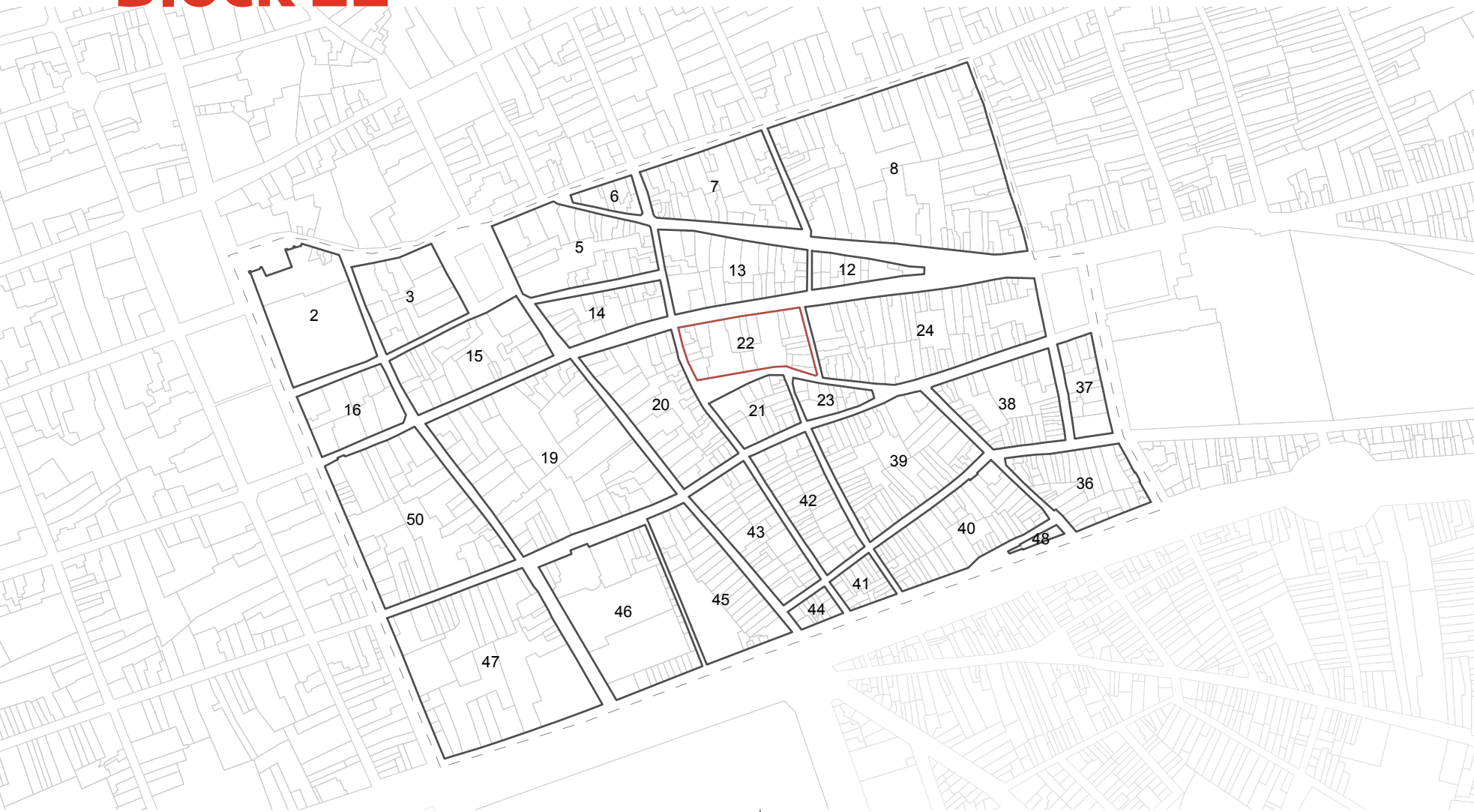
Plot 21.17



Plot 21.18



Block 22



map 28. Overview of the research area - sector G
1:5000

 block definition

 HMZQ

 Surroundings

 sector G



map 29. Block 22
1:1000

 plot definition

 catalogued buildings

 HMZQ

 Surroundings

 sector G



1990

Plot 22.03



2000

Plot 22.05



2013



Plot 22.06



1990

2000

2013



Plot 22.07



Plot22.08



Plot 22.08

1990

Plot 22.10

2000



2013



Plot 22.11



Plot 22.14



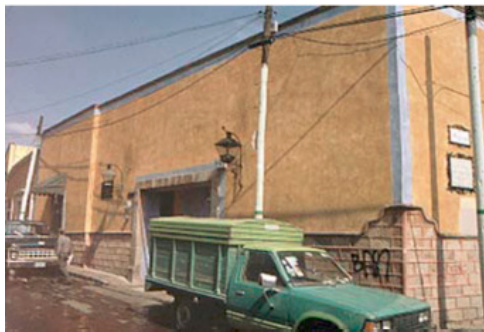
1990

2000

2013



Plot 22.15



Plot 22.20



Plot 22.22

Block 23



map 30. Overview of the research area - sector G
1:5000

 block definition

 HMZQ

 Surroundings

 sector G



map 31. Block 23
1:1000

 plot definition

 catalogued buildings

 HMZQ

 Surroundings

 sector G



1990

Plot 23.02

2000



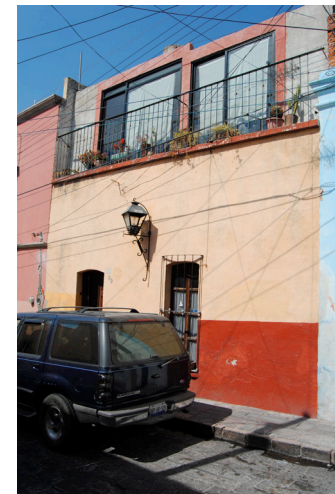
2013



Plot 23.09



Plot 23.10



Block 24



map 32. Overview of the research area - sector G
1:5000

 block definition

 HMZQ

 Surroundings

 sector G



map 33. Block 24
1:1000

 plot definition

 catalogued buildings

 HMZQ

 Surroundings

 sector G



1990

Plot 24.01



2000



2013



Plot 24.02



Plot 24.03



1990



2000



2013



Plot 24.04



Plot 24.05



Plot 24.06

1990

Plot 24.07



2000

2013



Plot 24.09



Plot 24.10



1990



2000



2013



Plot 24.11



Plot 24.14



Plot 24.15

1990

Plot 24.16



2000



2013



Plot 24.17



Plot 24.18



1990

2000

2013



Plot 24.19



Plot 24.21



Plot 24.23

1990

Plot 24.26

2000

2013



Plot 24.27



Plot 24.29



1990

2000

2013



Plot 24.31



Plot 24.32



Plot 24.33

1990

Plot 24.37



2000



Plot 24.39



Plot 24.40



1990

2000

2013



Plot 24.41



Plot 24.42



Plot 24.44

1990

Plot 24.45



2000

Plot 24.47



2013



Plot 24.48



1990

2000

2013



Plot 24.49



Plot 24.50



Plot 24.51

1990

Plot 24.52



2000

2013



Plot 24.53



Plot 24.54



Block 36



map 34. Overview of the research area - sector G
1:5000

3 block definition

HMZQ

Surroundings

sector G



map 35. Block 36
1:1000

3 plot definition

catalogued buildings

HMZQ

Surroundings

sector G



1990

Plot 36.33

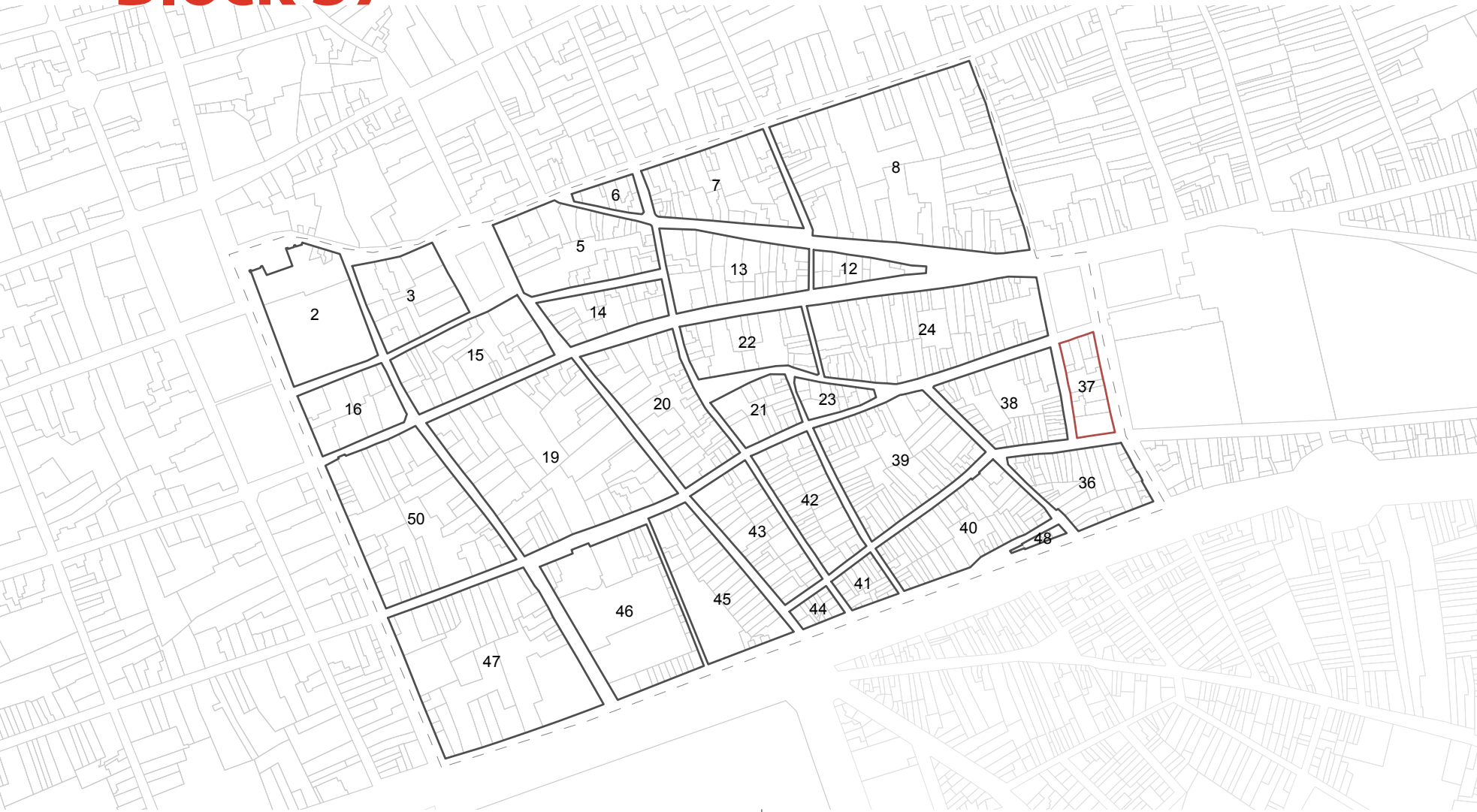
2000



2013



Block 37



map 36. Overview of the research area - sector G
1:5000




 block definition

 HMZQ
 Surroundings
 sector G



map 37. Block 37
1:1000

 plot definition

 catalogued buildings
 HMZQ
 Surroundings
 sector G



1990

Plot 37.01



2013



Plot 37.02



Plot 37.03



1990

2000

2013



Plot 37.04



Plot 37.05



Plot 37.06

1990

Plot 37.06

2000



2013



Plot 37.07



Plot 37.08



1990

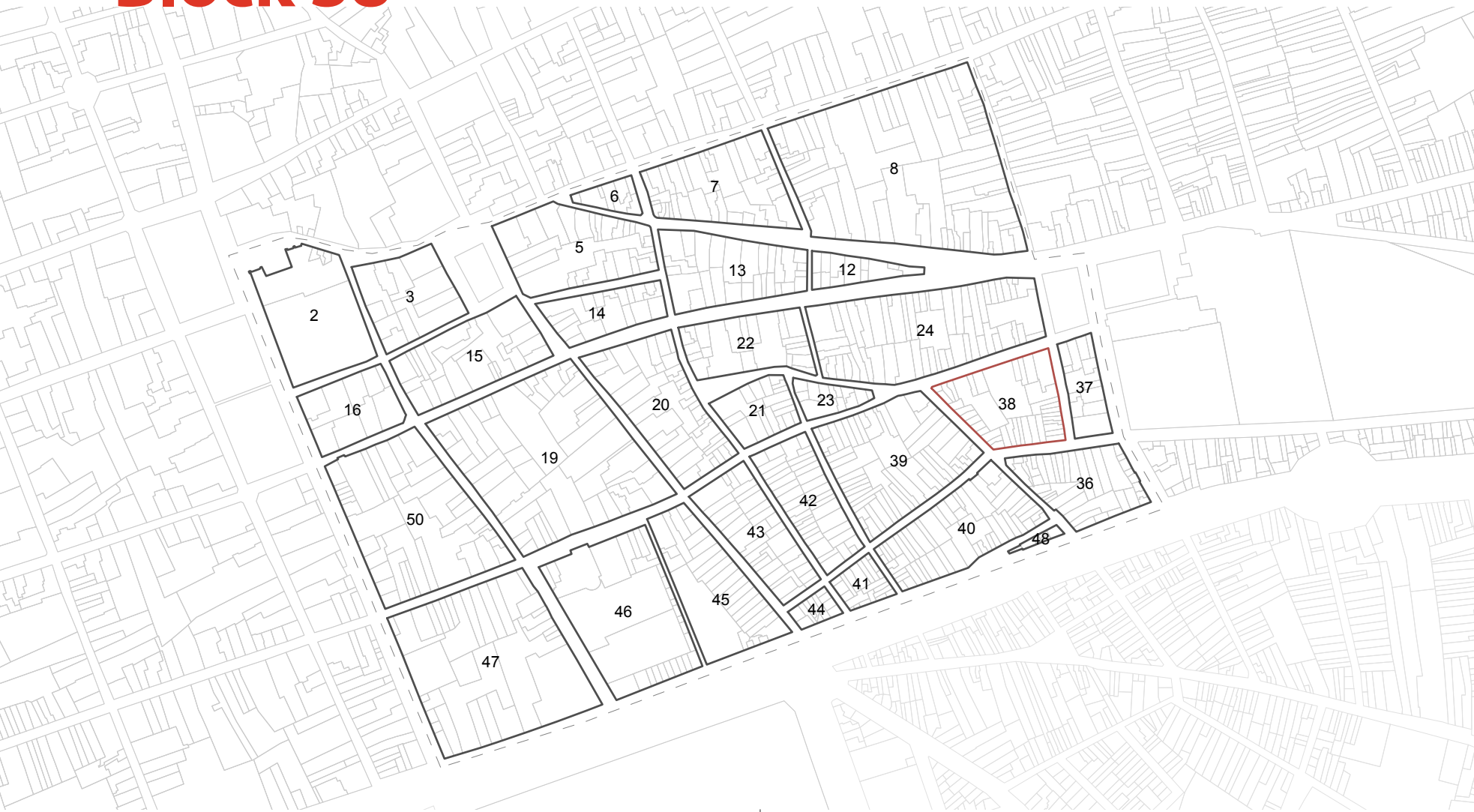
2000

2013



Plot37.10

Block 38



map 38. Overview of the research area - sector G
1:5000

 block definition

 HMZQ

 Surroundings

 sector G



map 39. Block 38
1:1000

 plot definition

 catalogued buildings

 HMZQ

 Surroundings

 sector G



1990

Plot 38.01



2000

2013



Plot 38.02



Plot 38.03



1990



2000



2013



Plot 38.04



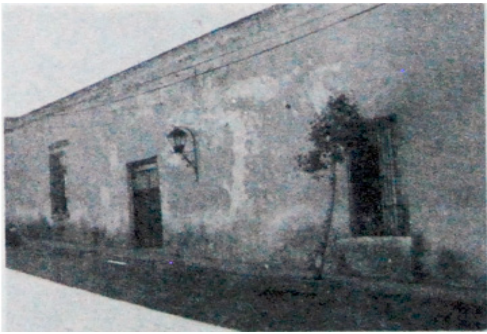
Plot 38.05



Plot 38.06

1990

Plot 38.07



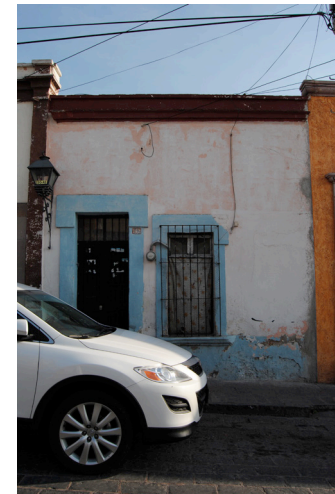
2000



2013



Plot 38.08



Plot 38.10



1990

2000

2013



Plot38.25

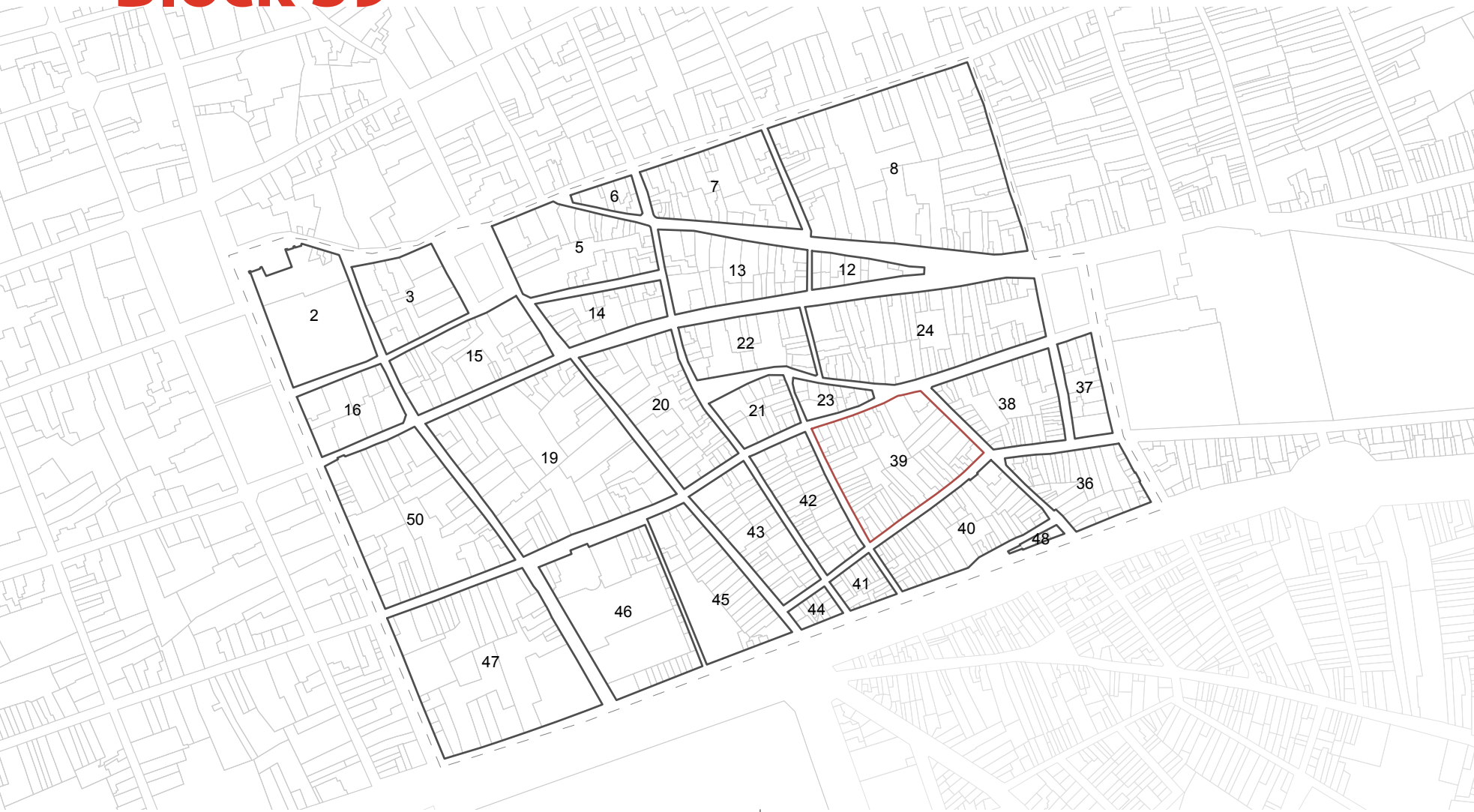


Plot 38.27



Plot 38.36

Block 39



map 40. Overview of the research area - sector G
1:5000

 block definition

 HMZQ

 Surroundings

 sector G



map 41. Block 39
1:1000

 plot definition

 catalogued buildings

 HMZQ

 Surroundings

 sector G



1990

Plot 39.01

2000



2013



Plot 39.05



Plot 39.07



1990

2000

2013



Plot 39.11



Plot 39.12



Plot 39.15

1990

Plot 39.17



2000

2013



Plot 39.24



Plot 39.25



1990

2000

2013



Plot 39.40



Plot 39.41



Plot 39.42

1990

Plot 39.46



2000

Plot 39.47



Plot 39.48



2013



1990



2000



2013

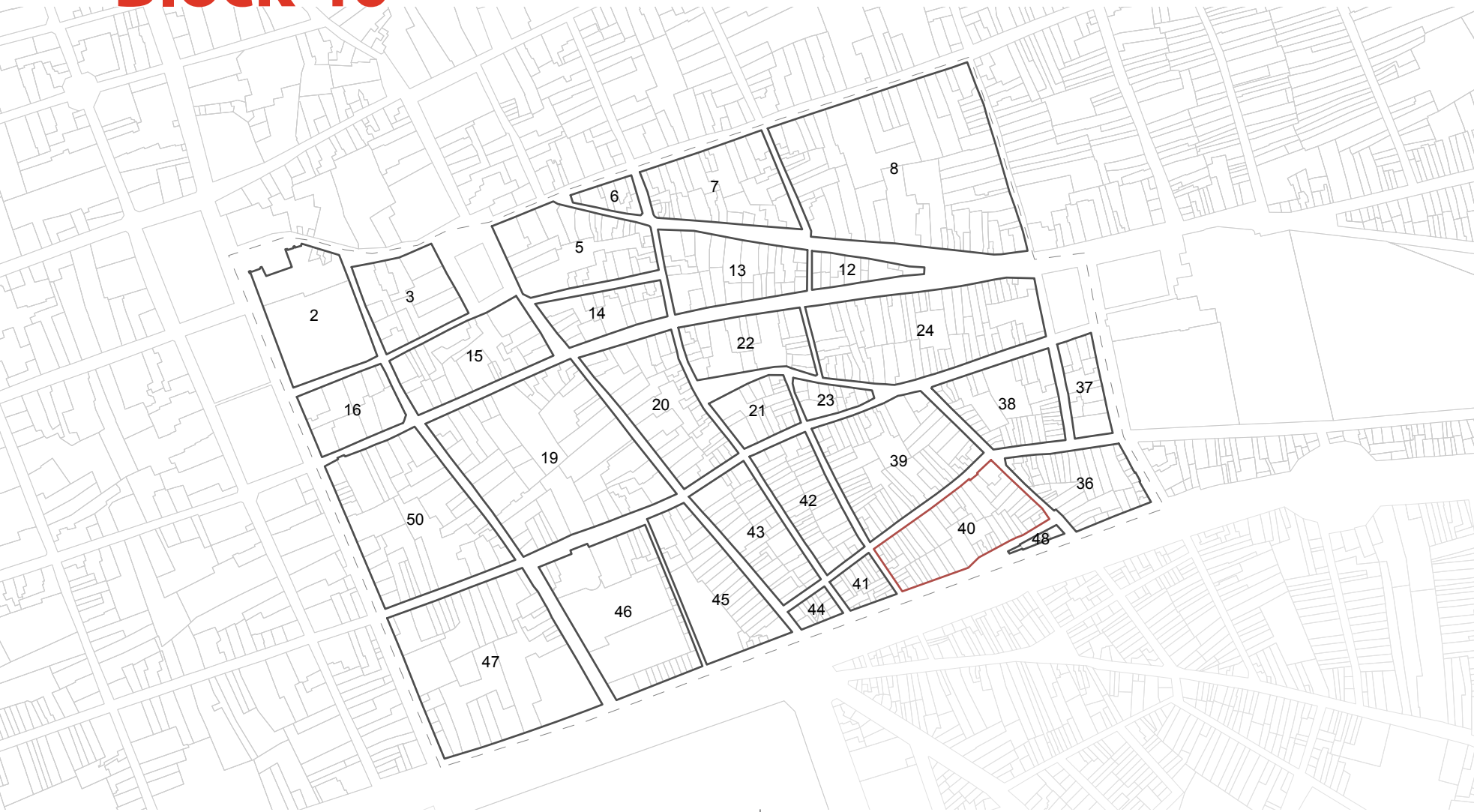


Plot 39.51



Plot 39.52

Block 40



map 42. Overview of the research area - sector G
1:5000

 block definition

 HMZQ

 Surroundings

 sector G



map 43. Block 40
1:1000

 plot definition

 catalogued buildings

 HMZQ

 Surroundings

 sector G



1990

Plot 40.08

2000



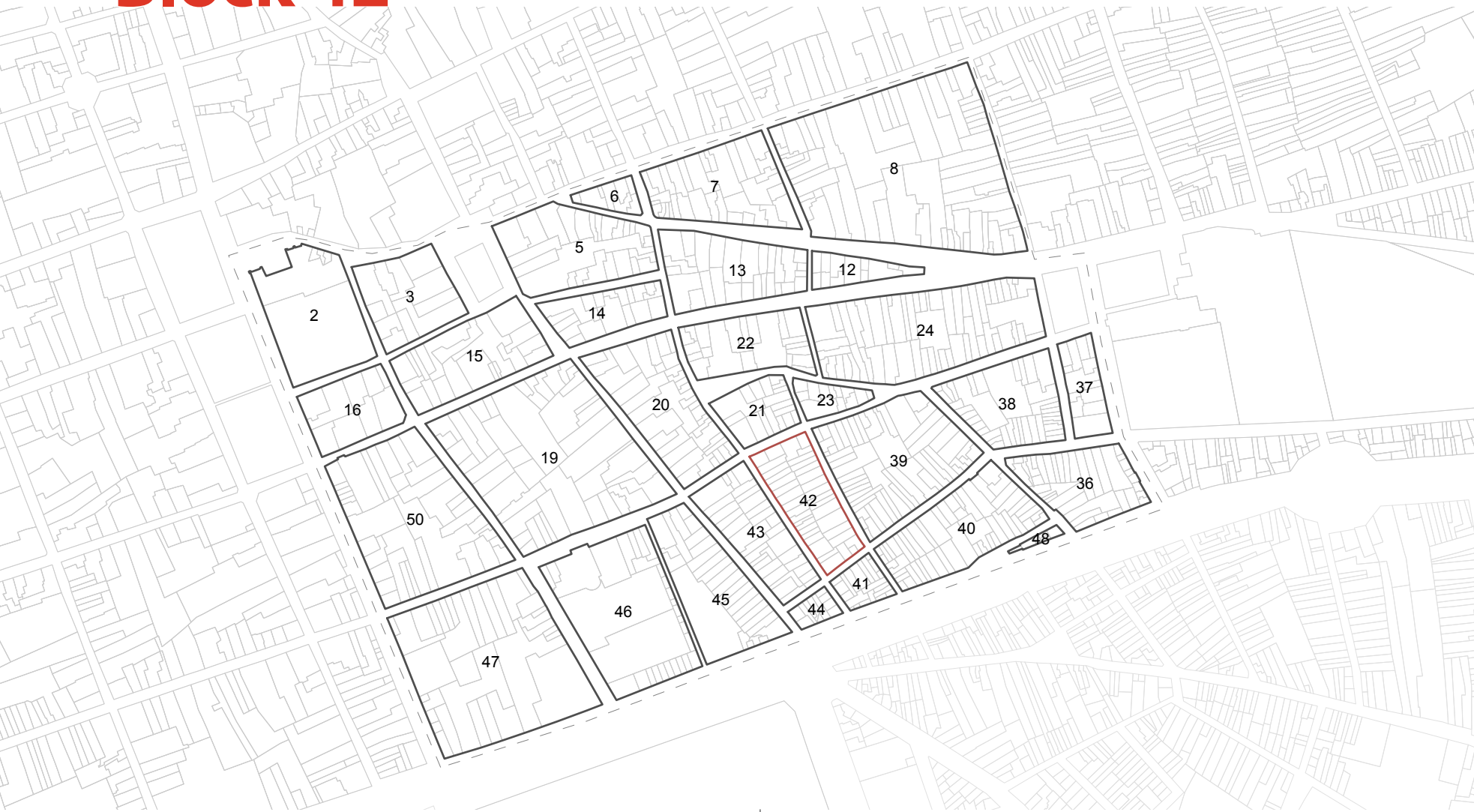
2013



Plot 40.19



Block 42



map 44. Overview of the research area - sector G
1:5000

 block definition

 HMZQ

 Surroundings

 sector G



map 45. Block 42
1:1000

 plot definition

 catalogued buildings

 HMZQ

 Surroundings

 sector G



1990

Plot 42.03



2000



2013



Plot 42.04



Plot 42.09



1990



2000



2013



Plot 42.11



Plot 42.14



Plot 42.15

1990

Plot 42.22

2000



2013



Plot 42.28



Plot 42.32



1990

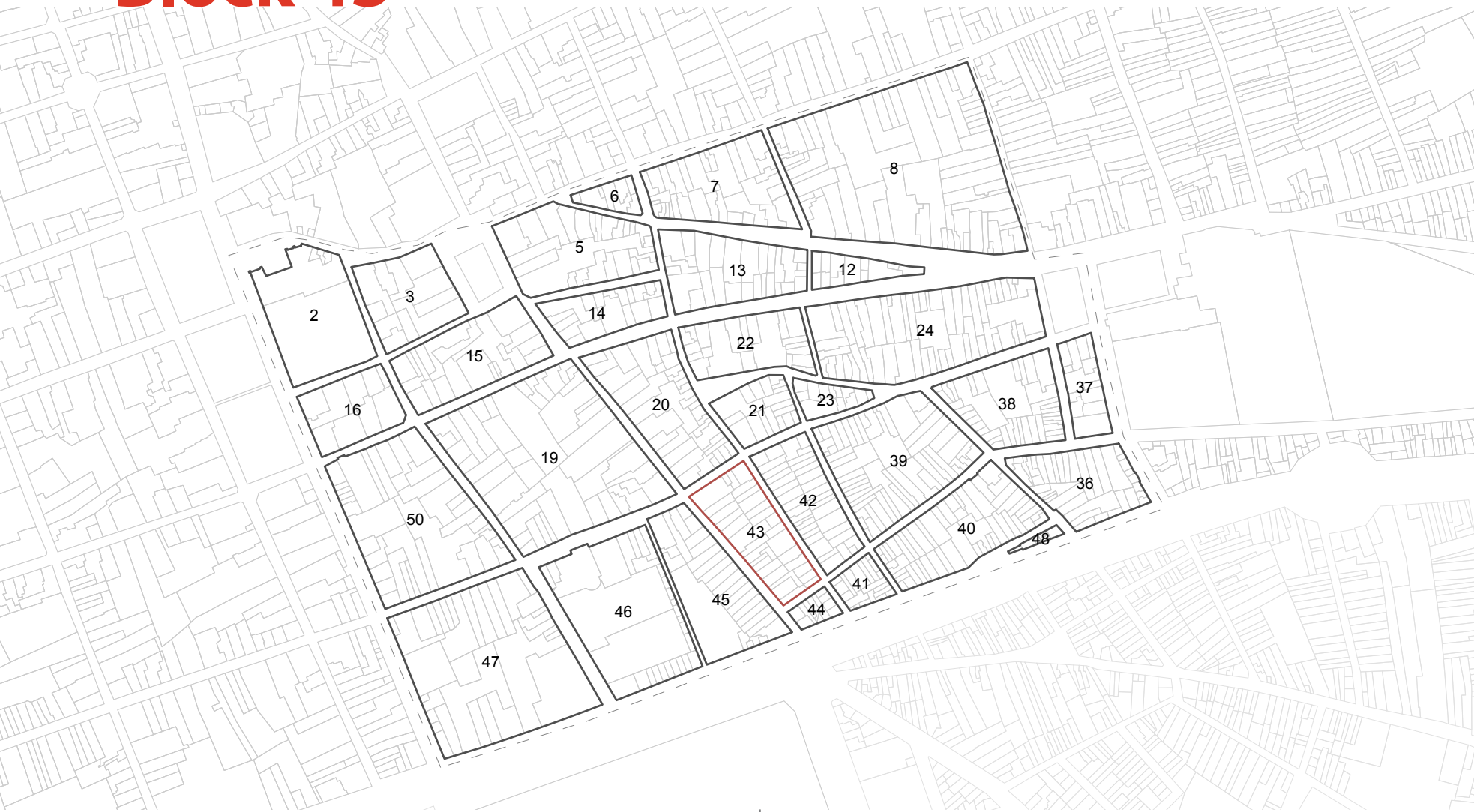
2000

2013



Plot 42.35

Block 43



map 46. Overview of the research area - sector G
1:5000

 block definition

 HMZQ

 Surroundings

 sector G



map 47. Block 43
1:1000

 plot definition

 catalogued buildings

 HMZQ

 Surroundings

 sector G



1990

Plot 43.01



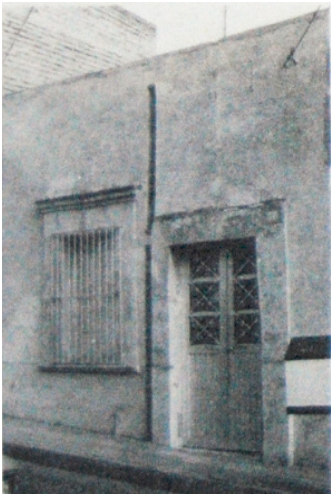
2000



2013



Plot 43.02



Plot 43.04



1990



2000



2013



Plot 43.19



Plot 43.20



Plot 43.21

1990

Plot 43.22



2000



2013



Plot 43.23



Plot 43.26



1990

2000

2013



Plot 43.27

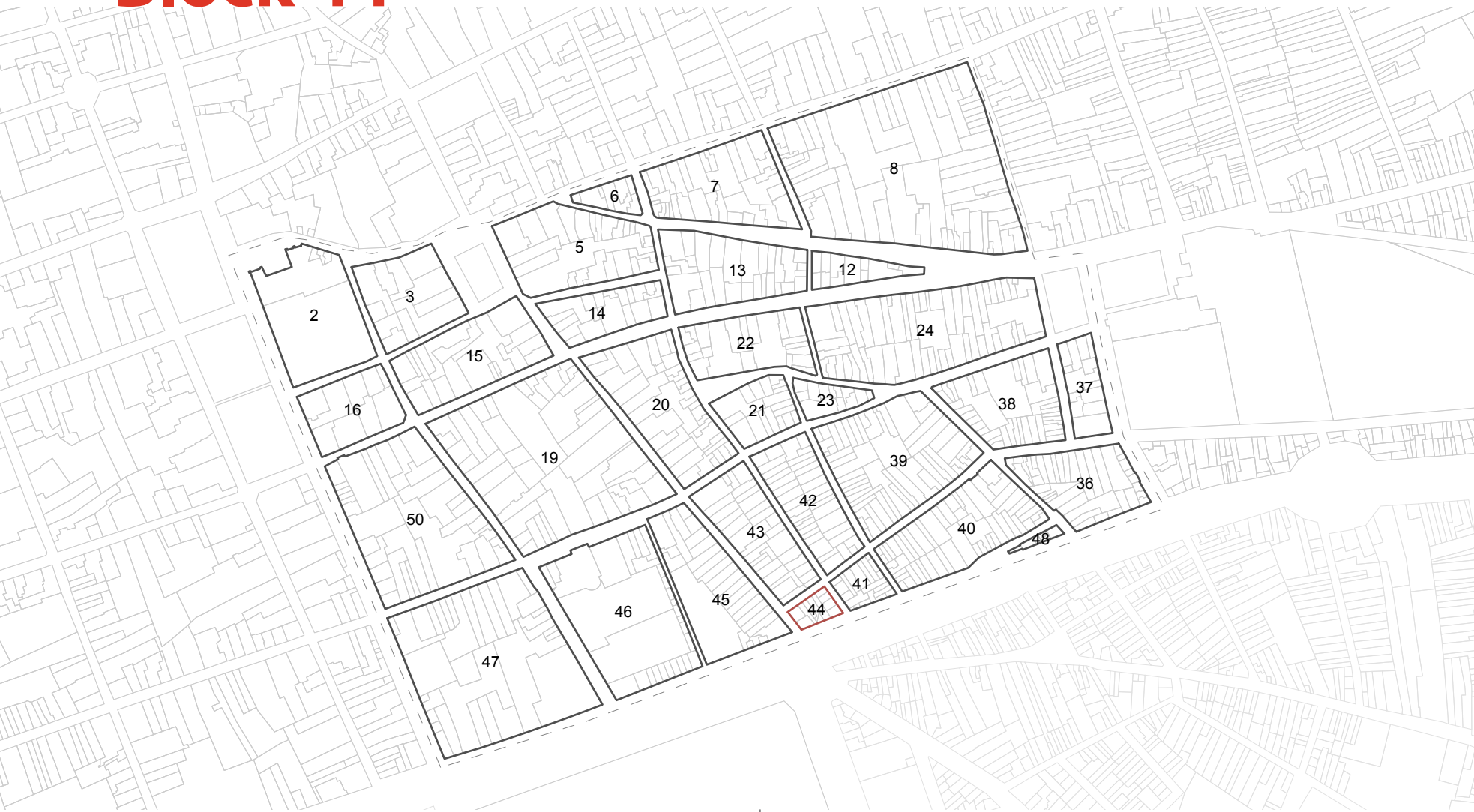


Plot 43.29



Plot 43.30

Block 44



map 48. Overview of the research area - sector G
1:5000

 block definition

 HMZQ

 Surroundings

 sector G



map 49. Block 44
1:1000

 plot definition

 catalogued buildings

 HMZQ

 Surroundings

 sector G



1990

Plot 44.01

2000



2013



Block 45



map 50. Overview of the research area - sector G
1:5000

 block definition

 HMZQ

 Surroundings

 sector G



map 51. Block 45
1:1000

 plot definition

 catalogued buildings

 HMZQ

 Surroundings

 sector G



1990

Plot 45.01



2000



2013



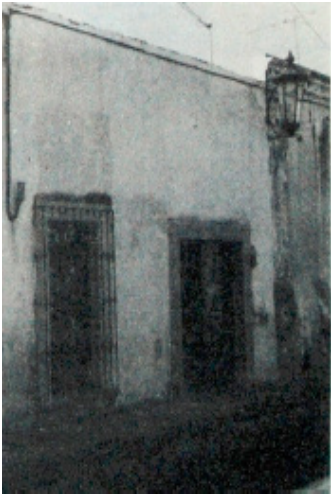
Plot 45.03



Plot 45.07



1990



2000



2013



Plot 45.08



Plot 45.09



Plot 45.10

1990

Plot 45.12



2000



2013



Plot 45.13



Plot 45.14



1990

2000

2013



Plot 45.16



Plot 45.18



Plot 45.19

Block 46



map 52. Overview of the research area - sector G
1:5000




 block definition

 HMZQ
 Surroundings
 sector G



map 53. Block 46
1:1000

 plot definition

 catalogued buildings
 HMZQ
 Surroundings
 sector G



1990

Plot 46.01



2000

2013



Plot 46.02



Plot 46.05



1990

2000

2013



Plot 46.07



Plot 46.17

Block 47



map 54. Overview of the research area - sector G
1:5000

 block definition

 HMZQ

 Surroundings

 sector G



map 55. Block 47
1:1000

 plot definition

 catalogued buildings

 HMZQ

 Surroundings

 sector G



1990

Plot 47.02



2000



2013



Plot 47.03



Plot 47.05



1990

2000

2013

Plot47.06



Plot 47.07



Plot 47.10



1990

Plot 47.11



2000



2013



Plot 47.12



Plot 47.13



1990



2000



2013



Plot 47.14



Plot 47.15



Plot 47.16

1990

Plot 47.17



2000



2013



Plot 47.19



Plot 47.21



1990

2000

2013



Plot 47.21



Plot 47.23



Plot 47.35

Block 50



map 56. Overview of the research area - sector G
1:5000




 block definition

 HMZQ
 Surroundings
 sector G



map 57. Block 50
1:1000

 plot definition

 catalogued buildings
 HMZQ
 Surroundings
 sector G



1990

Plot 50.03



2000

2013



Plot 50.04



Plot 50.05



1990



2000



2013



Plot 50.06



Plot 50.07



Plot 50.08

1990

Plot 50.09



2000



2013



Plot 50.10



Plot 50.11



1990

2000

2013



Plot 50.12



Plot 50.13



Plot 50.14

1990

Plot 50.17



2000



2013



Plot 50.18



Plot 50.20



1990



2000



2013



Plot 50.21



Plot 50.24



Plot 50.25

1990

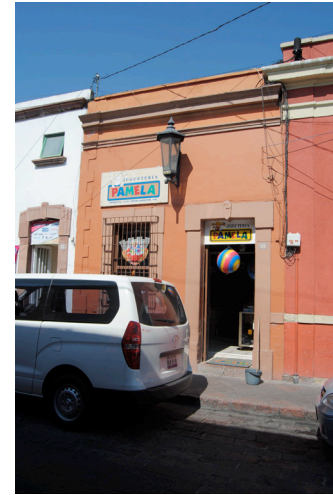
Plot 50.26



2000



2013



3. References

Catálogo Nacional de Monumentos Históricos Inmuebles del Estado de Querétaro/ National List of Historic Properties Querétaro State, 1990, Federal District, Mexico

Catálogo Nacional de Monumentos Históricos Estado de Querétaro/ National List of Historic Properties Querétaro State, 2000

IMPLAN (2012). II.- DIAGNÓSTICO FINAL, Querétaro, http://www.IMPLANQuerétaro.gob.mx/pdfproductos/plan_manejo/II%20DIAGNOSTICO%20FINAL.pdf