

Schuurman Group, Bekkering Adams Architects

Citation for published version (APA):

Bekkering, J. D., & Adams, M. H. (2015). Schuurman Group, Bekkering Adams Architects. In X. Hi-Design International Publishing (Ed.), *Logistic Park & Building* (pp. 70-81). Dalian University of Technology Press.

Document status and date:

Published: 01/01/2015

Document Version:

Publisher's PDF, also known as Version of Record (includes final page, issue and volume numbers)

Please check the document version of this publication:

- A submitted manuscript is the version of the article upon submission and before peer-review. There can be important differences between the submitted version and the official published version of record. People interested in the research are advised to contact the author for the final version of the publication, or visit the DOI to the publisher's website.
- The final author version and the galley proof are versions of the publication after peer review.
- The final published version features the final layout of the paper including the volume, issue and page numbers.

[Link to publication](#)

General rights

Copyright and moral rights for the publications made accessible in the public portal are retained by the authors and/or other copyright owners and it is a condition of accessing publications that users recognise and abide by the legal requirements associated with these rights.

- Users may download and print one copy of any publication from the public portal for the purpose of private study or research.
- You may not further distribute the material or use it for any profit-making activity or commercial gain
- You may freely distribute the URL identifying the publication in the public portal.

If the publication is distributed under the terms of Article 25fa of the Dutch Copyright Act, indicated by the "Taverne" license above, please follow below link for the End User Agreement:

www.tue.nl/taverne

Take down policy

If you believe that this document breaches copyright please contact us at:

openaccess@tue.nl

providing details and we will investigate your claim.

LOGISTICS PARK & BUILDING

Edited by HI-DESIGN INTERNATIONAL PUBLISHING



Dalian University of Technology Press



SCHUURMAN 集团

SCHUURMAN GROUP

Architect

Juliete Bekkering, Monica Adams, Frank Venhorst, Vincent Hector, Lukas Heiniger, Michel Leunis, Paul Michielsen, Sander Van Schaik, Albert-Jan Vermeulen, Manuel Aust

Firm

Bekkering Adams Architecten

Location

Business area Boekelermeer, Alkmaar, the Netherlands

Area

9,105 m²

Photographer

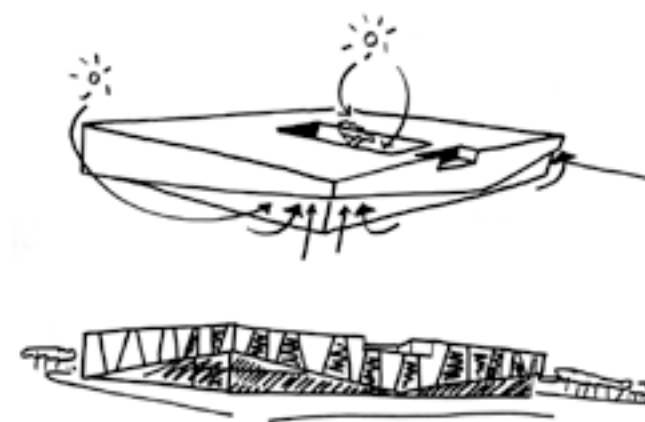
Digi Daan, Jansje Klazinga, Christian Richters

The accommodation for the Schuurman Group is situated on the business area Boekelermeer in Alkmaar, a small town in the north of the Netherlands. This prime location is seen from the highway A9 and is adjacent to a natural reserve. To profit from the qualities of the location, the building is designed as a freestanding object, whereby each side has its own specific character and appearance.

The volume has uplifted corners to give room to the special functions of the program. The strong lines of the exterior give the building a distinct expression and allow the landscape to flow through the building.

The building has an efficient layout with a warehouse area of 12-meter high and 3 floors of office space. On the top floor a patio-garden across the building brings light deep into the building. It also provides a visual and physical link between the offices and the warehouse-area. In this way the patio works as an important spatial as well as organizing element, while connecting the warehouse and office space.

In the building several sustainable measures are incorporated, such as concrete floor slabs as thermal active system, subterranean hot & cold storage, and a low energy lighting and control system, set up as a Philip's pilot project.



daylight control saving energy for lighting 控制日照以节约照明损耗

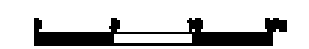
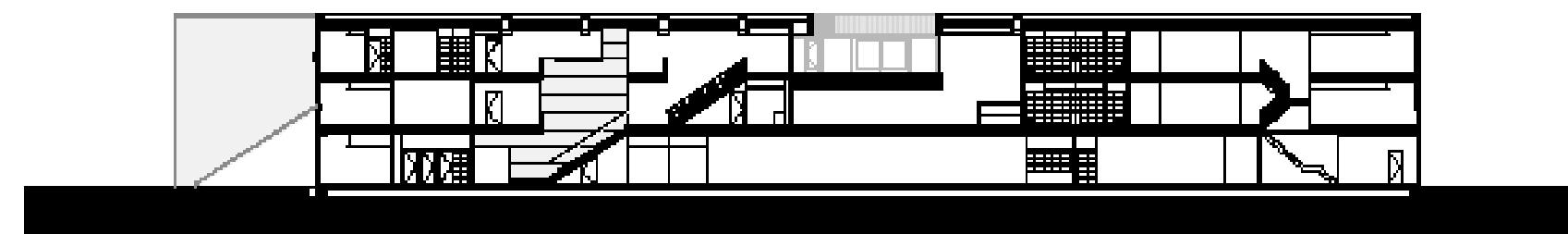
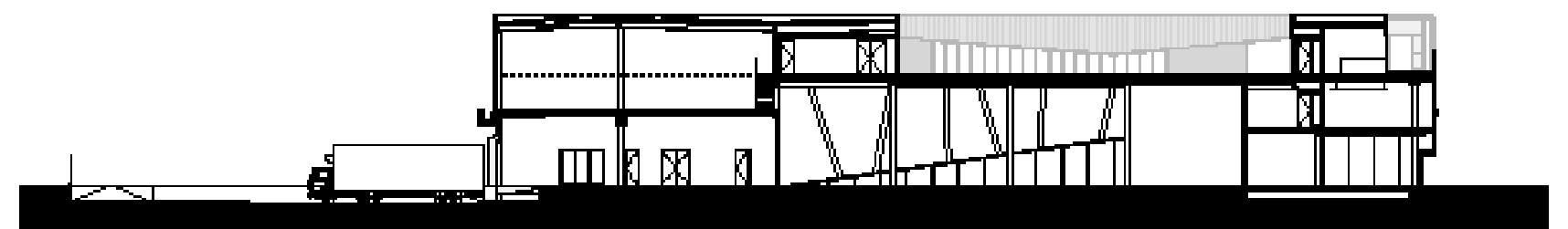
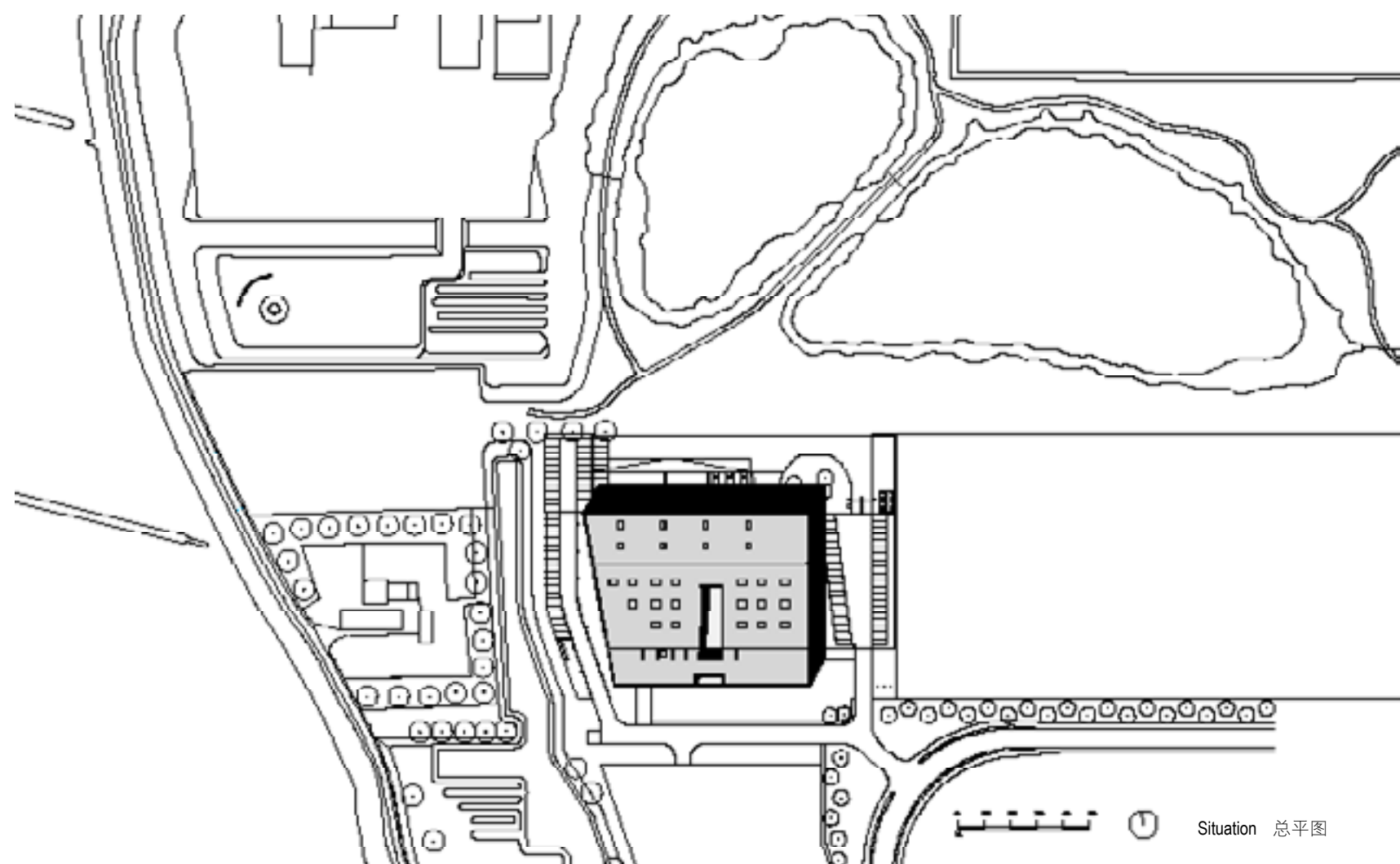
precise orientation towards the sun 精确的向阳朝向



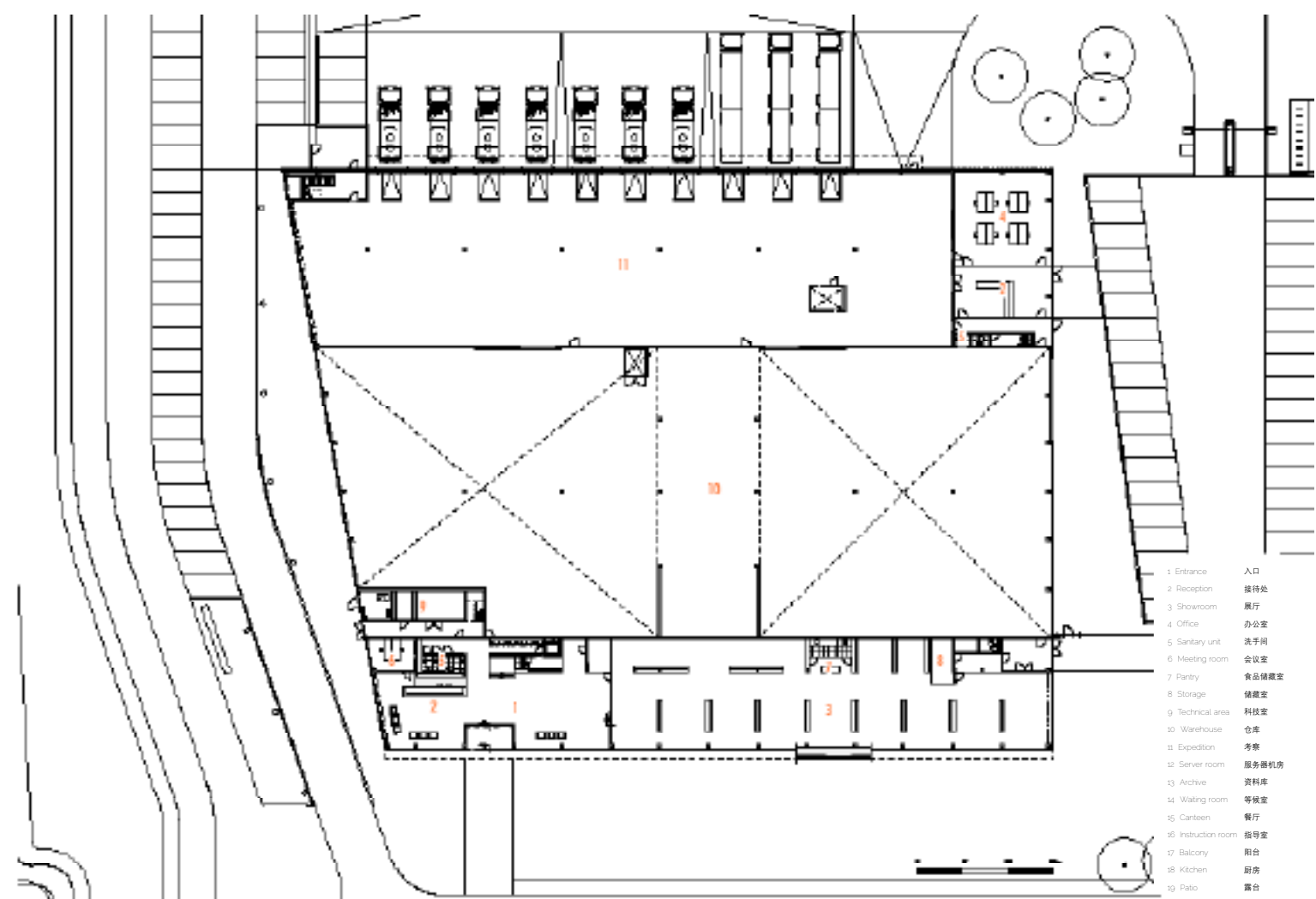
flexible workspaces 灵活的办公空间

subterranean hot & cold storage 地下冷热空气储存

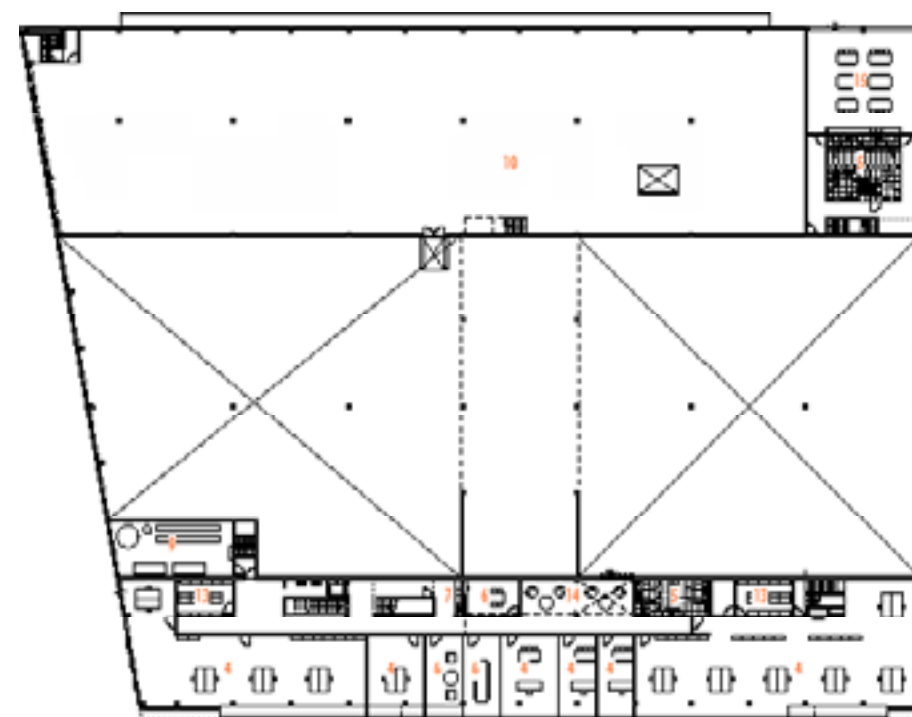
concrete floorslabs as a thermal active system 混凝土地板作为热力效应系统



Sections 剖面



level 00 - ground floor 首层平面图



level 01 - first floor
二层平面图



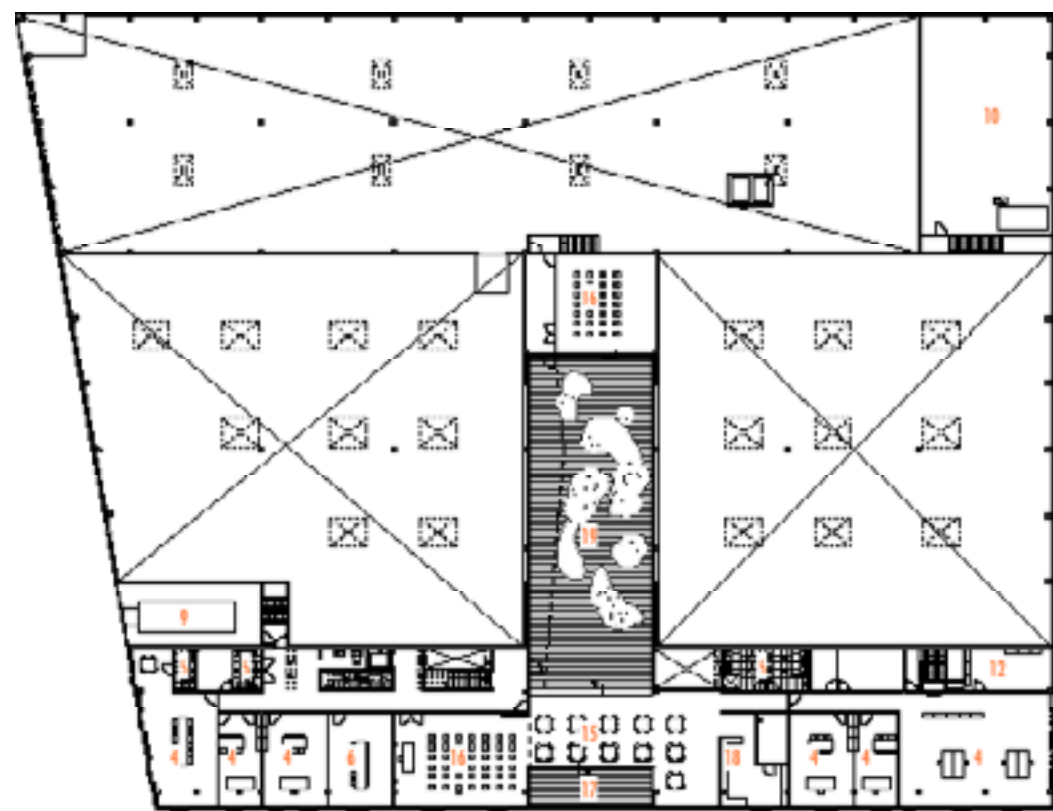
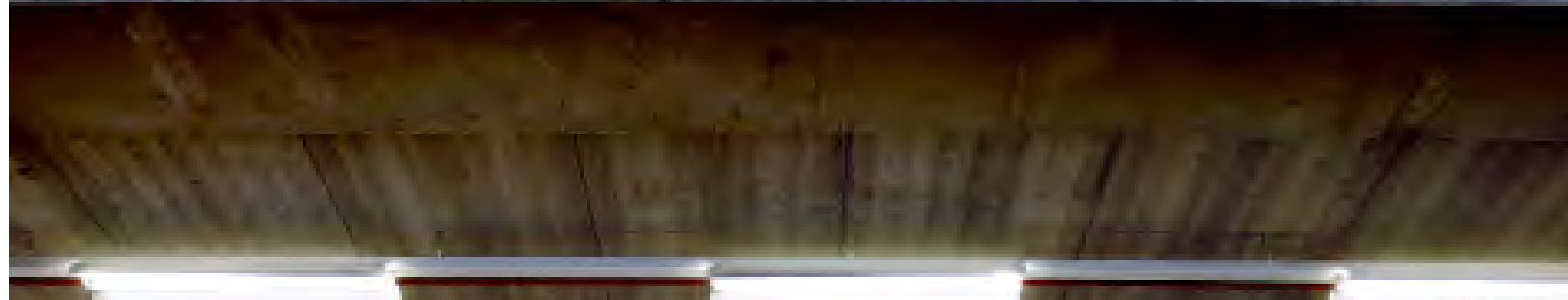


Schuurman 集团坐落于荷兰北部小镇阿尔克马尔的 Boekelermeer 商业区。它的地理位置优越，从 A9 高速公路可以看到该区域，并且还毗邻一个自然保护区。为了更好地利用其地域上的优势，该建筑的设计独树一帜，每一面都有不同的特色和外观。

该建筑的四角是向上升起的，这就为一些特殊用途留出了空间。硬朗的外部线条赋予整个建筑独特的表现力，并使整体景观具有流动性。

该建筑的一项高效设计布局是一个 12 米高的仓储空间和 3 层楼的办公区域。顶层是一个横跨整个建筑的平台花园，阳光由此照入大楼深处；同时它也成为了办公区与仓储区之间的视觉通道。因此，该平台是连接仓库和办公区的重要组成元素。

该楼的设计融入了很多可持续发展的措施，比如混凝土楼板作为热力运作系统，地下冷热能存储，以及低能耗照明和控制系统，这些都是菲利普的试点项目。



- | | |
|---------------------|-------|
| 1 Entrance | 入口 |
| 2 Reception | 接待处 |
| 3 Showroom | 展厅 |
| 4 Office | 办公室 |
| 5 Sanitary unit | 洗手间 |
| 6 Meeting room | 会议室 |
| 7 Pantry | 食品储藏室 |
| 8 Storage | 储藏室 |
| 9 Technical area | 科技室 |
| 10 Warehouse | 仓库 |
| 11 Expedition | 考察 |
| 12 Server room | 服务器机房 |
| 13 Archive | 资料库 |
| 14 Waiting room | 等候室 |
| 15 Canteen | 餐厅 |
| 16 Instruction room | 指导室 |
| 17 Balcony | 阳台 |
| 18 Kitchen | 厨房 |
| 19 Patio | 露台 |

level 02 - second floor

—/25 1:100 1/21

