

Delamination in IC stacked back-end structure

Citation for published version (APA):

Hal, van, B. A. E., Peerlings, R. H. J., & Zhang, G. Q. (2004). *Delamination in IC stacked back-end structure*. Poster session presented at Mate Poster Award 2004 : 9th Annual Poster Contest.

Document status and date:

Published: 01/01/2004

Document Version:

Publisher's PDF, also known as Version of Record (includes final page, issue and volume numbers)

Please check the document version of this publication:

- A submitted manuscript is the version of the article upon submission and before peer-review. There can be important differences between the submitted version and the official published version of record. People interested in the research are advised to contact the author for the final version of the publication, or visit the DOI to the publisher's website.
- The final author version and the galley proof are versions of the publication after peer review.
- The final published version features the final layout of the paper including the volume, issue and page numbers.

[Link to publication](#)

General rights

Copyright and moral rights for the publications made accessible in the public portal are retained by the authors and/or other copyright owners and it is a condition of accessing publications that users recognise and abide by the legal requirements associated with these rights.

- Users may download and print one copy of any publication from the public portal for the purpose of private study or research.
- You may not further distribute the material or use it for any profit-making activity or commercial gain
- You may freely distribute the URL identifying the publication in the public portal.

If the publication is distributed under the terms of Article 25fa of the Dutch Copyright Act, indicated by the "Taverne" license above, please follow below link for the End User Agreement:

www.tue.nl/taverne

Take down policy

If you believe that this document breaches copyright please contact us at:

openaccess@tue.nl

providing details and we will investigate your claim.

Delamination in IC stacked back-end structure

B.A.E. van Hal, R.H.J. Peerlings, G.Q. Zhang

Eindhoven University of Technology, Department of Mechanical Engineering

Introduction

The evolving process of miniaturizing integrated circuits (ICs) requires the introduction of new materials. These new materials have altered mechanical properties. Due to both the reduced physical dimensions and the application of new materials, the thermo-mechanical reliability of ICs becomes an important design issue.

Figure 1 shows a typical IC package. The actual IC, depicted in figure 2, consists of

- the silicon substrate,
- the front-end containing thousands of transistors and
- the stacked back-end structure of metal lines, which connect the transistors.

If the IC is not carefully designed, cracks occur under thermo-mechanical loading, which results in IC failure. Simulation tools can assist the IC engineer to 'design for reliability'.

Objective

The objective of this research is to implement advanced damage models in simulation tools. It focuses on delamination in the stacked back-end structure, because this is an important failure mode.

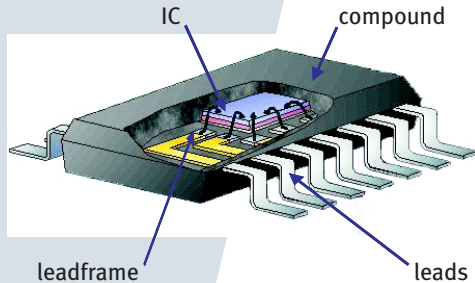


Figure 1 Typical IC package.

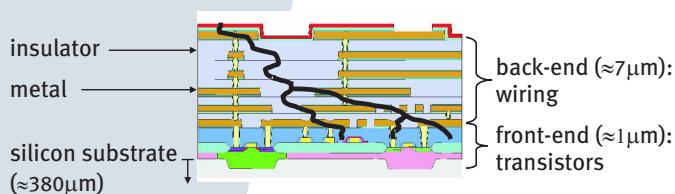


Figure 2 IC layout.

Methods

Multi-scale modelling

The finite element method (FEM) forms the basis for the simulation tools. However, it is not applicable in its usual form due to large scale differences. Therefore, a multi-scale approach will be adopted as shown in figure 3. A global model predicts the macroscopic thermo-mechanical behaviour, whereas a local model predicts the microscopic failure behaviour.

Two candidate multi-scale approaches will be considered.

- Computational homogenization [1]:
The global model does not use an explicit constitutive law, but the stress/deformation relation follows from computations on the microscopic level using representative volume elements defined for discrete material points.
- Global/local approach:
The global model uses an equivalent constitutive law, for which the parameters are modified adaptively based on the analyses of local models of small regions.

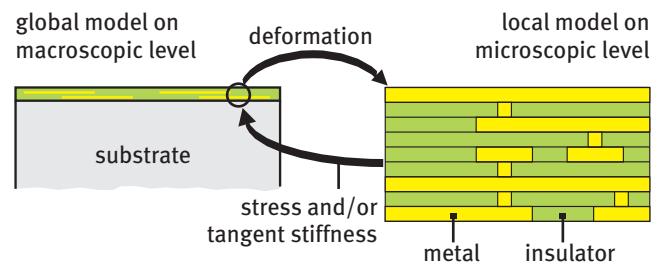


Figure 3 Multi-scale approach.

Cohesive zone modelling

The cohesive zone model (CZM) of Xu and Needleman [2] is incorporated on the microscopic level to predict failure due to delamination of the stacked back-end structure. This model describes the relation between the separation Δ at the interface of interest and the required traction T . Figure 4 shows the typical constitutive behaviour for this type of models.

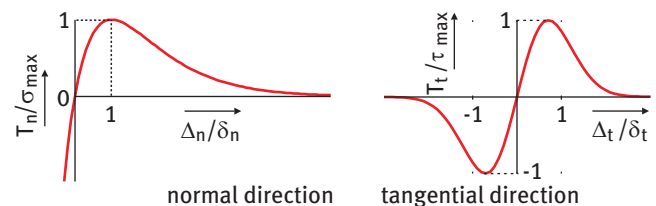


Figure 4 CZM behaviour in dimensionless quantities.

Challenge

The challenge of this research is to develop a methodology for the damage transition from the microscopic level towards the macroscopic level.

Conclusions

This recently initiated research project will provide the IC engineer with a simulation tool for the fast and reliable evaluation of different design alternatives in order to obtain a thermo-mechanically reliable IC.

References:

- [1] KOUZNETSOVA, V.: *Computational homogenization for multi-scale analysis of multi-phase materials* (Ph.D. thesis, TU/e, 2002)
- [2] XU, X., NEEDLEMAN, A.: *Numerical simulation of fast crack growth in brittle solids* (J. Mech. Physics of Solids 42, 1994)