

## Damage induced anisotropy in masonry walls

***Citation for published version (APA):***

Massart, T. J., Peerlings, R. H. J., Geers, M. G. D., & Bouillard, P. (2002). *Damage induced anisotropy in masonry walls*. Poster session presented at Mate Poster Award 2002 : 7th Annual Poster Contest.

***Document status and date:***

Published: 01/01/2002

***Document Version:***

Publisher's PDF, also known as Version of Record (includes final page, issue and volume numbers)

***Please check the document version of this publication:***

- A submitted manuscript is the version of the article upon submission and before peer-review. There can be important differences between the submitted version and the official published version of record. People interested in the research are advised to contact the author for the final version of the publication, or visit the DOI to the publisher's website.
- The final author version and the galley proof are versions of the publication after peer review.
- The final published version features the final layout of the paper including the volume, issue and page numbers.

[Link to publication](#)

***General rights***

Copyright and moral rights for the publications made accessible in the public portal are retained by the authors and/or other copyright owners and it is a condition of accessing publications that users recognise and abide by the legal requirements associated with these rights.

- Users may download and print one copy of any publication from the public portal for the purpose of private study or research.
- You may not further distribute the material or use it for any profit-making activity or commercial gain
- You may freely distribute the URL identifying the publication in the public portal.

If the publication is distributed under the terms of Article 25fa of the Dutch Copyright Act, indicated by the "Taverne" license above, please follow below link for the End User Agreement:

[www.tue.nl/taverne](http://www.tue.nl/taverne)

***Take down policy***

If you believe that this document breaches copyright please contact us at:

[openaccess@tue.nl](mailto:openaccess@tue.nl)

providing details and we will investigate your claim.

# Damage induced anisotropy in masonry walls

T.J. Massart<sup>(1,2)</sup>, R.H.J. Peerlings<sup>(1)</sup>, M.G.D. Geers<sup>(1)</sup>, Ph. Bouillard<sup>(2)</sup>  
 Eindhoven University of Technology, Department of Mechanical Engineering<sup>(1)</sup>  
 Universite Libre de Bruxelles, Continuum Mechanics Department<sup>(2)</sup>

## Introduction

Masonry is a composite material exhibiting a complex non-linear behaviour due to possible cracking in each of its phases. The complexity resides in the interplay of the initial orthotropy of the material and cracking induced anisotropy. Failure modes are strongly dependent on the principal stresses and their orientation with respect to the initial material directions [1].

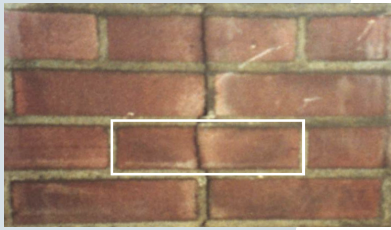


Figure 1 Vertical cracking in masonry sample

Most existing macroscopic masonry descriptions are phenomenological and based on weakly motivated assumptions, not accounting for realistic macroscopic effects of constituents failure.

Using the periodic structure of masonry and simplifying assumptions, the objectives are to assess:

- whether simple mesoscopic damage laws are able to reproduce in-plane failure
- under which conditions macroscopic full anisotropic cracking induced effects are present

## Unit cell computations

Homogeneous macroscopic fields are prescribed on a unit cell by enforcing the displacement fields to be strain-periodic [2] (colors indicate tied sides). The load is applied using stress-control imposed through the six corner nodes.



Figure 2 Tying on running bond unit cell

The cell is loaded with proportional stress paths. The constituents are modeled under the plane stress assumption using a nonlocal scalar damage mechanics setting with different sensitivities to compressive and tensile stress states. No nonlocal interactions are included between neighboring points of different phases. The evolution of the macroscopic material symmetry may be illustrated by homogenization of damaged configurations.

/department of mechanical engineering

## Results

Figure 3 presents a damaged cell subjected to combined vertical compression and shear, a stress state usually encountered in masonry structures. Damage develops in the mortar joints, leading to a fully anisotropic secant stiffness as illustrated by the corresponding homogenized stiffness matrix. The cracking induced macroscopic anisotropy evolution is strongly connected to the geometric arrangement of the material. Its coupling with initial orthotropy is too complex to be represented using phenomenological continuum mechanics description.

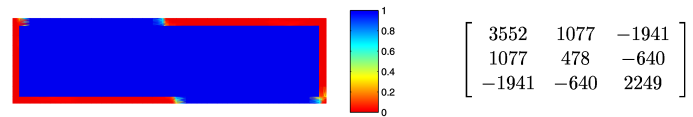


Figure 3 Non orthotropic damaged cell configuration

The related failure envelope for moderate stress states (figure 4) illustrates the variability of the failure mechanisms according to the stress path.

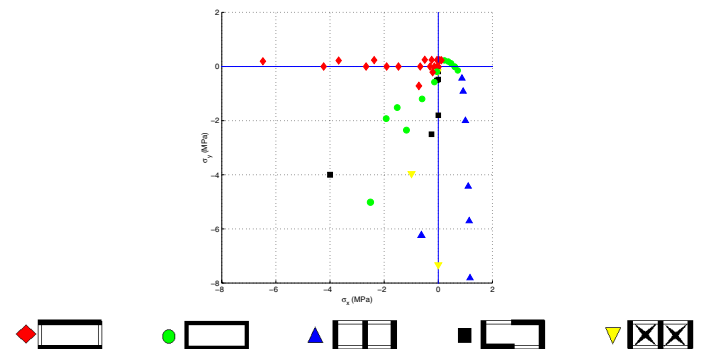


Figure 4 Failure points in stress space with failure modes

## Conclusions and perspectives

Results show that full anisotropy should appear in macroscopic models, preferably postulating damage evolution at the mesoscale in multi-scale representations. It also suggests that essentials of the macroscopic behaviour may be captured assuming constant damage in given sub-regions of a unit cell. Developments are required to include 3D effects for the simulation of compressive failure.

## References:

- [1] DHANASEKAR, M., PAGE, A.: *The failure of brick masonry under biaxial stresses*, (Proc. Instn. Civ. Eng./2 79, 295-313, 1985)
- [2] ANTHOINE, A.: *Homogenization of periodic masonry: plane stress, generalized plane strain or 3D modelling?* (Com. Num. Meth. Eng. 13, 319-326, 1997)