

An implementation of co-simulation for performance prediction of innovative integrated HVAC systems in buildings

Citation for published version (APA):

Trcka, M., Wetter, M., & Hensen, J. L. M. (2009). An implementation of co-simulation for performance prediction of innovative integrated HVAC systems in buildings. In *11th IBPSA Building Simulation Conference, 27-30 July* (pp. 724-731). International Building Performance Simulation Association (IBPSA).

Document status and date:

Published: 01/01/2009

Document Version:

Accepted manuscript including changes made at the peer-review stage

Please check the document version of this publication:

- A submitted manuscript is the version of the article upon submission and before peer-review. There can be important differences between the submitted version and the official published version of record. People interested in the research are advised to contact the author for the final version of the publication, or visit the DOI to the publisher's website.
- The final author version and the galley proof are versions of the publication after peer review.
- The final published version features the final layout of the paper including the volume, issue and page numbers.

[Link to publication](#)

General rights

Copyright and moral rights for the publications made accessible in the public portal are retained by the authors and/or other copyright owners and it is a condition of accessing publications that users recognise and abide by the legal requirements associated with these rights.

- Users may download and print one copy of any publication from the public portal for the purpose of private study or research.
- You may not further distribute the material or use it for any profit-making activity or commercial gain
- You may freely distribute the URL identifying the publication in the public portal.

If the publication is distributed under the terms of Article 25fa of the Dutch Copyright Act, indicated by the "Taverne" license above, please follow below link for the End User Agreement:

www.tue.nl/taverne

Take down policy

If you believe that this document breaches copyright please contact us at:

openaccess@tue.nl

providing details and we will investigate your claim.

AN IMPLEMENTATION OF CO-SIMULATION FOR PERFORMANCE PREDICTION OF INNOVATIVE INTEGRATED HVAC SYSTEMS IN BUILDINGS

Marija Trcka^{1*}, Michael Wetter², and Jan L.M. Hensen¹

¹Unit Building Physics and Systems, Department of Architecture Building and Planning, Eindhoven University of Technology, The Netherlands

²Simulation Research Group, Building Technologies Department, Environmental Energy Technologies Division, Lawrence Berkeley National Laboratory, Berkeley, CA 94720

*Corresponding author. E-mail: m.trcka@tue.nl

ABSTRACT

Integrated performance simulation of buildings and heating, ventilation and air-conditioning (HVAC) systems can help reducing energy consumption and increasing level of occupant comfort. However, no single building performance simulation (BPS) tool offers sufficient capabilities and flexibilities to accommodate the ever-increasing complexity and rapid innovations in building and system technologies. One way to alleviate this problem is to use co-simulation. The co-simulation approach represents a particular case of simulation scenario where at least two simulators solve coupled differential-algebraic systems of equations and exchange data that couples these equations during the time integration. This paper elaborates on issues important for co-simulation realization and discusses multiple possibilities to justify the particular approach implemented in a co-simulation prototype. The prototype is verified and validated against the results obtained from the traditional simulation approach. It is further used in a case study for the proof-of-concept, to demonstrate the applicability of the method and to highlight its benefits. Stability and accuracy of different coupling strategies are analyzed to give a guideline for the required coupling frequency. The paper concludes by defining requirements and recommendations for generic co-simulation implementations.

INTRODUCTION

Modern buildings are required to be energy efficient while adhering to the ever-increasing demand for better indoor environmental quality. To design energy efficient building systems in this complex setting, integrated building performance simulation (BPS) can be used.

However, due to the fragmented development of BPS tools, and the rapid innovations in building and system technologies, state of the art BPS tools are often not comprehensive enough to model and simulate the relevant physical phenomena and the controls of the mechanical system. Frequently, the user requirements exceed the functionality of the BPS tools. Also, in the area of system simulation there is still an enormous amount of work to be done.

The state of the art BPS tools are difficult and costly to extend. Adding new features requires from the tool developer to have in-depth knowledge of the programming languages used, of the underlying architecture, and of the tool-specific modelling strategies.

Since the number of its users often measures the value of a tool, the tool development is mostly driven towards accommodating the existing HVAC design. Examples of such tools include eQuest, EnergyPlus, DOE 2.1, IES VE, and VA114. Adaptable tools like TRNSYS and Modelica have strength in system modelling and simulation, and are so more likely to drive the innovation towards net zero energy buildings, but do not have a well-developed building model as present in, e.g., ESP-r and EnergyPlus. To successfully continue the development of BPS tools, which accelerate innovation of building technologies and help in mitigating climate change, a focus should be on supporting a flexible modelling environment. Such environment should allow analyzing building systems that have not yet been implemented by the program developers. A way forward would be to provide a facility to combine features from different tools. A tool should be coupled with a complementary tool in such a way that the integrated result provides more value to the user than the individual tool does itself. This can be achieved by a strategy known as process model cooperation (Hensen et al. 2004), external coupling (Djunaedy 2005), or co-simulation (Trcka 2008, Wetter and Haves 2008). It is a case of simulation scenario where at least two simulators solve coupled differential-algebraic systems of equations and exchange data during the time integration that couples these equations.

In the field of BPS, considerable effort has been made in integrating coupled physical phenomena into the individual BPS tools. Some of the integrated BPS tools integrate process models available in other tools, i.e., by converting the models into their own subroutines (Hensen 1991; Aasem 1993; Huang et al. 1999; McDowell et al. 2003; Zhai 2003; Carroll and Hitchcock 2005).

However, only a limited amount of work has been done in co-simulation. General examples include the integration of high-resolution light simulator

(Radiance) with building energy simulator (ESP-r) (Janak 1997) and the integration of computational fluid dynamics simulator (FLUENT) with building energy simulator (ESP-r) (Djunaedy 2005). In the domain of HVAC simulators examples include integration of TRNSYS with several other programs, e.g., MATLAB [http://software.cstb.fr/] and EES (Keilholz 2002). The above mentioned simulators are directly coupled with each other, with one tool serving as the master and the other as the client. A different architecture has been implemented in the Building Controls Virtual Test Bed that uses a middleware to manage the data exchange between different simulators, with each simulator acting as a client (Wetter and Haves 2008). However until now, there exists no standardized framework for integration of BPS simulators, nor do their exist guidelines for implementation of co-simulation with regards to stability and accuracy.

In this paper, we discuss principles of co-simulation, comment on our development and implementation, and test the usability of co-simulation for performance prediction of innovative integrated energy systems in buildings. The main objective and the core issue of the research is how to properly define coupling and obtain accurate simulation results.

PRINCIPLES AND STRATEGIES

Various co-simulation realizations have different implications with regard to stability, convergence, accuracy, efficiency and ease of implementation. Here, some of the possible issues and realizations are discussed.

Data transfer

Overviews of commonly used interprocess communications protocols and co-simulation frameworks can be found in Yahiaoui et al. (2004) and Trcka (2008). The implementation of any of the co-simulation frameworks for distributed building system simulation raises difficulties when interfacing state of the art tools BPS programs. A challenge is to integrate the data exchange with the internal data structures, time integration algorithms and program flow of the individual simulators.

Coupling strategies

Based on the temporal data exchange and the iteration between the simulators, different coupling strategies are distinguished:

- Strong coupling requires an iterative iteration that involves the coupled simulators in order to guarantee a user-defined convergence criteria.
- In loose coupling, the coupled simulators use the coupling data that is computed based on data from preceding time steps. There is no iteration between the coupled simulators. We distinguish two types of loose coupling strategy (Figure 1):

- (i) zigzagged coupling, where the coupled simulators are executed in sequence, and
- (ii) cross coupling, where the coupled simulators are executed in parallel.

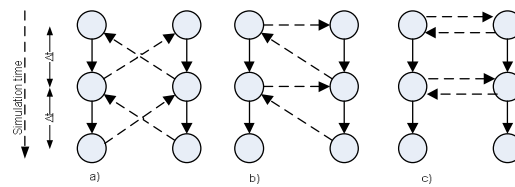


Figure 1: Sequence of coupling data exchange. a) Time-state scheme of strong coupling; b) Time-state scheme of zigzagged loose coupling; and c) Time-state scheme of cross loose coupling with parallel simulators execution. The dashed arrows indicate which coupling data (time-step wise) are available to each subsystem before the time step calculation is performed.

Simulator's roles

The co-simulation discussed in this paper implements zigzagged coupling, in which the sending and the receiving sequence differs between coupled simulators. For that reason, we call the simulators the *base simulator* and the *external simulator*.

System partitioning

Depending on which data are delayed in time, Park (1980) defines two partitioning strategies: (i) *implicit-implicit* - if the coupling data depends only on the state variables of the coupled subsystem, and (ii) *implicit-explicit* - if the coupling data depends on the state variables of both subsystems.

System decomposition strategies

This paper looks at two different system-decomposition strategies: (i) intra-domain system decomposition, in which the system is decomposed within one functional domain, such as within the HVAC domain only; and (ii) inter-domain decomposition, in which the system is decomposed between different functional domains, such as between the building and the HVAC system domain.

Coupling data

One important design decision in implementing co-simulation is which data will be exchanged between the simulators. For intra-domain decomposition within the HVAC domain, based on the conservation equations, a set of coupling data that includes mass flow rate, temperature and humidity ratio is selected for exchange in both directions.

For inter-domain decomposition, we selected as the basic set of coupling data the heat rate (convective, radiant and latent) in one direction and temperatures (air and mean radiant) and humidity ratio in the other direction.

The sets can be extended to include control signals if a sensor and an actuator are distributed among coupled simulators.

STABILITY AND ACCURACY

The building performance simulators typically contain legacy code with more than 100,000 lines of code that mixes code to implement the physical equations, the data exchange and the numerical solution algorithms. This makes it difficult to reinitialize state variables to previous values, which is necessary for strong coupling. Loose coupling is easier to implement, but the time-delay of the coupling data causes the original numerical time integration scheme to be modified. Consequently, the stability and accuracy properties of the original time integration scheme are no longer guaranteed.

Although the stability and accuracy of different time integration schemes are well understood (e.g., Lambert 1991), the stability and accuracy properties of the methods resulting from partitioning are not well analyzed. Kubler (2000) states that it is difficult, if not impossible, to determine these properties formally for a general class of problems.

In this paper, we consider problems defined by the first order initial value ordinary differential equation $\dot{y}(t) = f(y, t)$, $y(a) = \eta$, where $f: \mathbb{R}^m \times \mathbb{R} \rightarrow \mathbb{R}^m$ for some $a, b \in \mathbb{R}$ with $a < b$, and for some $t \in [a, b]$, $m \in \mathbb{N}$ and $\eta \in \mathbb{R}^m$. We assume $f(\cdot, \cdot)$ to be once (Lipschitz) continuously differentiable in y and t .

Consistency of co-simulation

Let $\text{ULTE}^{n+k}(\Delta t)$ denote the unit local truncation error at time step k , which is defined as the error produced by a single integration step of a k -step integration algorithm, starting from the exact solution to the differential equation, divided by the time step Δt .

The numerical method is said to be consistent if for all initial value problems introduced above, $\lim_{\Delta t \rightarrow 0} \text{ULTE}^{n+k}(\Delta t) = 0$.

If the non-partitioned numerical method is:

$$\sum_{j=0}^k \alpha_j y^{n+j} = \Delta t \phi_f(y^{n+k}, y^{n+k-1}, \dots, y^n, t^n; \Delta t), \quad (1)$$

the partitioning will transform it into

$$\sum_{j=0}^k \alpha_j y^{n+j} = \Delta t \phi_f(y_p^{n+k}, y^{n+k-1}, \dots, y^n, t^n; \Delta t), \quad (2)$$

where y_p^{n+k} represents the (unknown) predicted state vector.

Let α be the implicitness factor of a linear one-step numerical integration method. For the α -family of linear one-step numerical methods, the partitioning leads to

$$y^{n+1} - y^n = \Delta t [(1 - \alpha) f(y^n, t^n) + \alpha f(y_p^{n+1}, t^{n+1})]. \quad (3)$$

For the numerical approximation (3), using Taylor expansions of the state vectors y^{n+1} and y^n around the time $t^n + \alpha \Delta t$, the $\text{ULTE}^{n+1}(\Delta t)$ leads to

$$\|\text{ULTE}^{n+1}(\Delta t)\| \leq L \|\text{ULTE}_{\text{non-partitioned}}^{n+1}(\Delta t)\| + \alpha L O(\Delta t), \quad (4)$$

where L is the Lipschitz constant.

It follows from equation (4) and from $\lim_{\Delta t \rightarrow 0} \alpha L O(\Delta t) = 0$ that if the original non-partitioned numerical scheme is consistent, then the partitioned numerical scheme is consistent as well.

The unit local truncation error introduced by the partitioning is of order one. The order of the unit local truncation error of the first order accurate methods will not be changed by the partitioning. However, for the Crank-Nicholson method ($\alpha = 1/2$), which is of order two, partitioning will reduce the accuracy. A more detailed analysis on a specific problem, which can be found in Trcka (2008), shows that the greater the capacity of the subsystem simulated in the external simulator and the smaller the magnitude of the first derivative of the coupling data, the smaller the unit local truncation error. Also, if the system is defined by a differential algebraic system of equations, the partitioning can lead to inconsistencies in the numerical approximation to the solution (Trcka 2008).

Zero-stability and convergence of co-simulation

The zero-stability is concerned with the asymptotic behaviour in the limit as $\Delta t \rightarrow 0$. It is a property of the numerical integration method and not of the differential equation. The zero-stability of a numerical method can be determined by the roots of its *first characteristic polynomial* (Lambert 1991), which is defined by the coefficients on the left hand side of (1). By inspection of the partitioned linear numerical method (2), it can be seen that the partitioning changes only the right hand side of the equation. The partitioning does not change the first characteristic polynomial and consequently, the partitioning does not disturb the properties of the zero-stability of the non-partitioned numerical method.

Since by (4) it was shown that the numerical method (2) is consistent, and since the zero-stability of the original numerical scheme is not changed with partitioning, it follows that the partitioned numerical method (2) is convergent.

Absolute stability

The analysis of absolute stability, i.e., stability for a finite value of Δt , of the partitioned numerical method (2) shows that the implicit-implicit partitioning of co-simulation is unconditionally stable if both coupled simulators employ $\alpha \geq 1/2$. If $\alpha < 1/2$, the co-simulation is conditionally stable (Trcka 2008).

For implicit-explicit partitioning, co-simulation is conditionally stable even for $\alpha > 1/2$.

PROTOTYPE

The co-simulation prototype is based on two state of the art BPS tools. EnergyPlus has been selected as it has an advanced building model. TRNSYS has been selected because of its large library of HVAC components and its modular system modelling capability.

Loose coupling implementation

Figure 2 shows a flow-chart of the data flow for the loose coupling. The coupling data is exchanged only in the first iteration for the current time step in both simulators (i.e., if $j=0$ for simulator 1 (EnergyPlus) and $i=0$ for simulator 2 (TRNSYS)). How the inter- and intra-domain decomposition are incorporated into the zone temperature time integration formula is discussed in Trcka (2008).

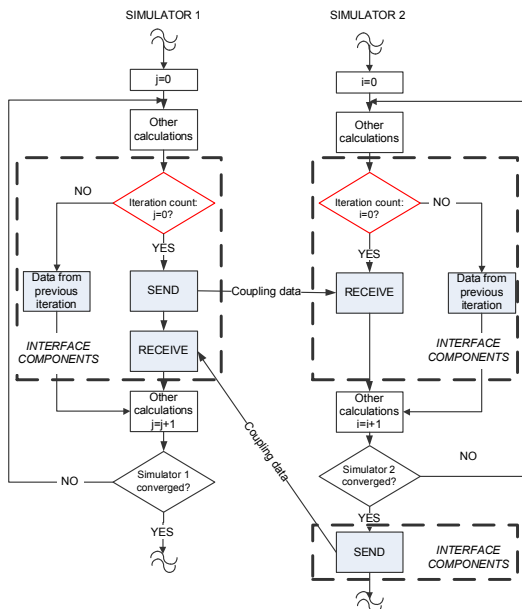


Figure 2: Flow-chart of the loosely-coupled implementation.

Strong coupling implementation

Strong coupling allows longer time steps than loose coupling for the same accuracy, but it requires an iteration between the simulators. In our prototype, EnergyPlus (i.e., simulator 1 in Figure 3) controls the iteration process. The convergence criterion is based on the difference between two subsequent received values of coupling data from TRNSYS. If the difference is greater than a specified value, EnergyPlus will request another iteration.

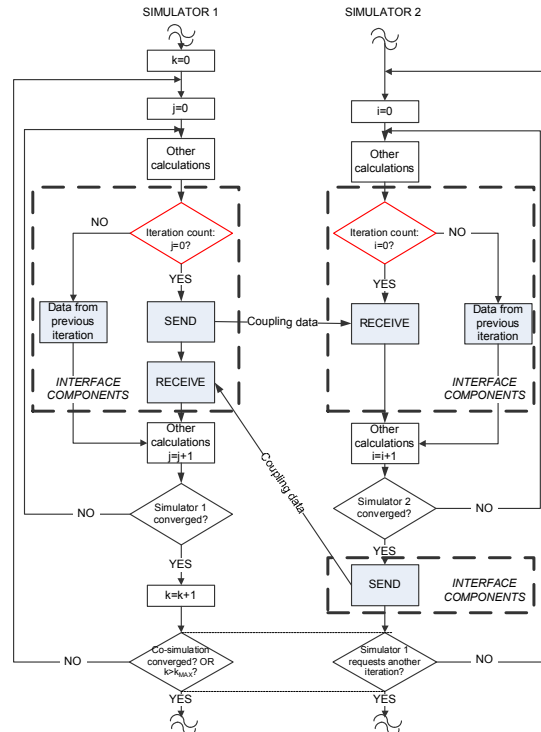


Figure 3: Flow-chart of the strongly-coupled implementation.

VALIDATION

The main objective of this numerical validation study is to show that for a given building system, the results obtained by co-simulation agree with the results obtained by mono-simulation. In combination with the analytical results discussed in the earlier sections, this should provide confidence in our co-simulation implementation. For our validation, we assume that the individual BPS programs have been validated (for mono-simulation) and hence we focus our effort only on the validation of the co-simulation.

HVAC BESTEST E300 case

The traditional BPS validation procedures are designed to test the validity of a single BPS program. If the coupled simulators were both successfully validated using the same validation technique, then they could be used to validate the coupling. However, remind that most of the traditional validation procedures for BPS programs are concerned with validating either only the BPS model, e.g., using inter-model comparison techniques (Judkoff and Neymark 1995), or with validating a single HVAC component model using empirical validation or inter-model comparison (Hensen 1991). They are not applicable for our situation since we need a BPS tool that is validated for an integrated system that simultaneously solves a building and its HVAC system using mono-simulation. For the validation of a building and HVAC system that are simulated simultaneously, the HVAC BESTEST (Neymark and Judkoff 2002; 2004) procedure may

be used. HVAC BESTEST Volume 1 considers steady state tests that can be solved with analytical solutions. Volume 2 includes hourly dynamic effects and other physical phenomena that cannot be solved analytically. It has been used to validate several state of the art BPS tools.

However, even though BESTEST Volume 2 has been used to validate EnergyPlus, the standard TRNSYS version (used in the prototypes) has been validated using only Volume 1 cases (Kummert et al. 2004). HVAC BESTEST Volume 2 cases were used to validate a custom version of TRNSYS that includes new code developed by the Technische Universität Dresden (TUD).

Thus, the coupling could not be validated using the traditional BPS validation procedures. However, as a preliminary validation test, the HVAC BESTEST E300 case was used with the available TRNSYS models, which have not been previously validated.

For the preliminary assessment of the validity of the coupling implemented in the prototypes, the reference case - E300 - from the HVAC BESTEST Volume 2 was used. To reduce any potential modelling error, the zone model was taken from the original EnergyPlus model of E300. The system was modelled using TRNSYS Type 665. The results are compared against the results obtained by different BPS programs.

The co-simulation model of the case HVAC BESTEST E300 with EnergyPlus and TRNSYS cannot be used with an ideal system control for the following two reasons. First, the system modelled in TRNSYS has an ON/OFF control and not a continuous control. Second, co-simulation does not allow the distributed ideal control modelling. Thus, a model of a realistic controller was used. However, using the realistic controller with the fast responding building with low-capacitance envelope and steady state HVAC system model results in oscillatory zone temperatures even for small time steps. Consequently, the co-simulation model does not exactly replicate the E300 model requirements, which should be taken into account when comparing the results.

The simulations were performed using inter-domain system decomposition and loose coupling. The temperatures of one-day simulation are shown in Figure 4. Similar results were obtained for loads and humidity ratios. The simulation was performed with a time step of one minute and the shown results are hourly averaged values. The figure shows good agreement between the co-simulation results and the results obtained by other tested BPS programs.

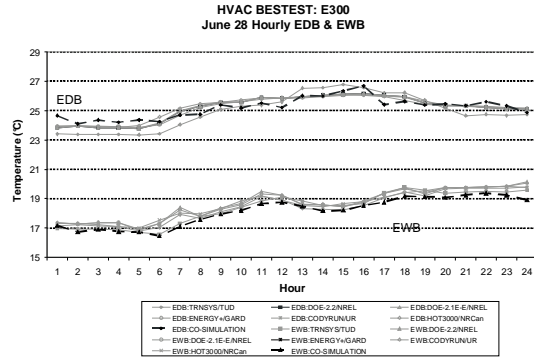


Figure 4: Zone (evaporator entering) dry-bulb (EDB) and wet-bulb (EWB) temperature for a specific simulation day.

Comparison of mono- and co-simulation

Another approach to validate the coupling would be to compare results obtained by co-simulation to results obtained by mono-simulation. However, the difference in results between the mono- and the co-simulation, using different tools, would be caused not only by the coupling, but also by differences in the models and solution techniques used in the coupled simulators. To avoid errors caused by different models, only one simulator was used for both the mono- and the co-simulation. The specifications of the system can be found in Trcka (2008). Using a time step of one minute for both the mono- and the co-simulation, the difference between the results is negligible (Figure 5).

With larger time steps, the influence of the time lagging of the coupling data is more noticeable. To illustrate this, the resulting zone temperatures from mono- and co-simulation, obtained using a time step of 30 minutes, are also presented in Figure 5.

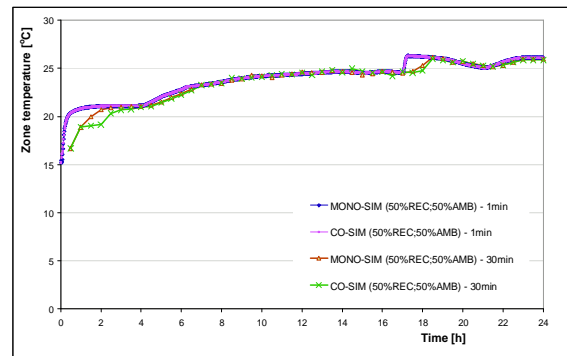


Figure 5: Temperature trajectories obtained by mono- and co-simulation with $\Delta t=1\text{min}$ and $\Delta t=30\text{min}$.

Comparison of different co-simulation implementations

The implementations of loose and strong coupling, and of intra- and inter-domain decomposition, are independent of each other. A comparison of results

obtained by different implementations was done to increase confidence in co-simulation. The specifications of the system used in the validation are described in Trcka (2008).

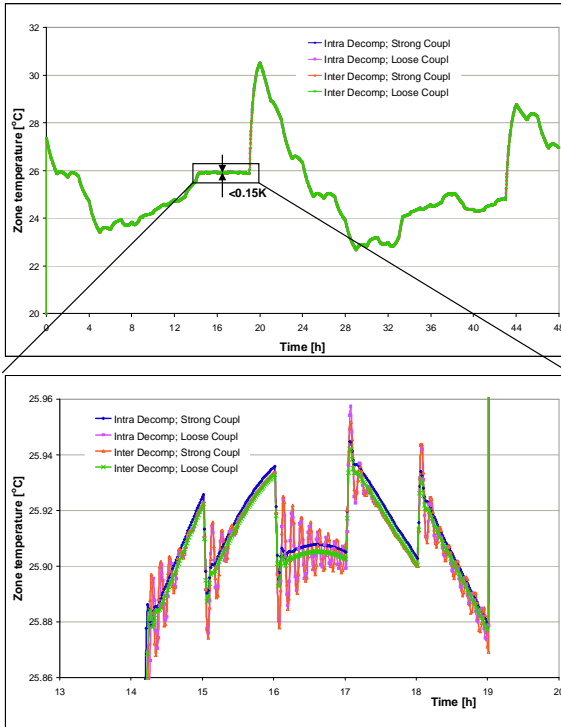


Figure 6: Zone temperature, with $\Delta t=1\text{min}$ and 720kg/h ; for all co-simulation approaches

Figure 6 shows the results of the numerical experiments, conducted with different coupling and decomposition strategies, using a time step of one minute. The figure shows almost identical zone temperatures for all four combinations of the system decompositions and the coupling strategies. In the loosely coupled co-simulation, the oscillations of the results occur due to the use of the lagged coupling data.

However, at larger time steps (e.g., 15 minutes), the co-simulation with strong coupling exhibited convergence problems. However, if relaxation was used in the iterative procedure that solves for the coupling variables, good agreement with the reference results were obtained even if larger time steps were used and/or the system was oversized.

To improve the accuracy of the loose coupling strategy at larger time steps, a linear extrapolation of the delayed coupling data has been tested. However, because the changes in the coupling data were not smooth, the tested first-order predictor did not improve accuracy in our experiments.

The shortest computation time was obtained for loosely coupled co-simulation. Using strong coupling with relaxation, stable and accurate results were achieved even with large time steps, but the computation time was high due to the iterations. In

summary, with respect to computation time and ease of implementation, we recommend the loose coupling strategy with small time steps.

Next, we analyzed accuracy vs. computation time. To measure accuracy, we computed the root mean square of the difference in the zone temperature and the reference zone temperature, which was obtained with strong coupling and a time step of one minute. The simulations were performed using inter-domain decomposition and loose coupling. Figure 7 shows the accuracy vs. computation time. The computation time was measured using the wall-clock time from the time point when shared memory has been initiated to the time point when the calculations finished.

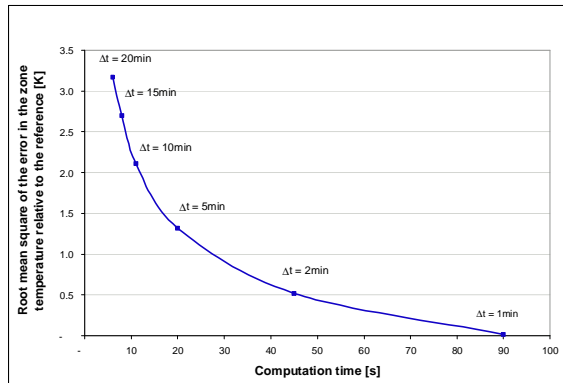


Figure 7: Accuracy vs. computation time

CASE STUDY

Several case studies were performed using the prototypes. They serve as a proof-of-concept, and they demonstrate the applicability and benefits of co-simulation. Some case studies have been previously reported (e.g., Trcka et al. 2006). Here we briefly discuss another case study.

Hybrid ventilation with evaporative cooling and run-around heat recovery

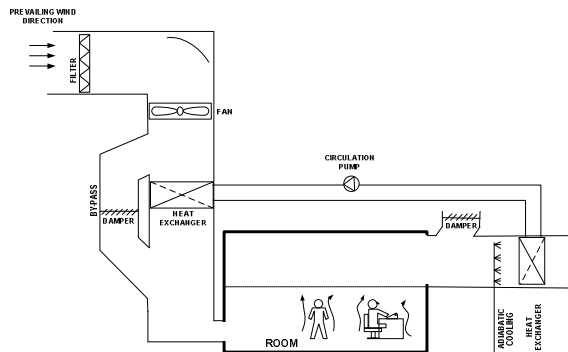


Figure 8: System schematic.

Figure 8 shows the system that was used in this example. All cooling is done using adiabatic evaporative cooling in the exhaust air stream. The only means to provide heating is to use the heat

recovery. The dynamic wind pressure is used to force air through the system when the wind pressure is sufficiently high. During periods when neither cooling nor heating is required, the pressure drop in the system is decreased by opening dampers that allow bypassing the heat exchangers. Also, the heat exchangers are bypassed when the outside temperature is sufficiently low for direct free cooling. To achieve a sufficient fresh air supply at low wind speeds, the system was designed for low pressure drop by using large ducts and displacement ventilation with requires less kinetic energy than conventional overhead air distribution.

The building was modelled in EnergyPlus version V1-2-2. It makes use of EnergyPlus' capability to control the electrical room lighting according to the daylight illumination level. EnergyPlus also has a displacement ventilation model for heat transfer and vertical temperature profile prediction. However, the system cannot be modelled in EnergyPlus for the following reason:

EnergyPlus models an HVAC system as a series of modules connected by fluid loops as shown in Figure 9. The fluid loops are divided into a supply and a demand side. As shown, the plant supply side cannot be connected directly to the air loop. However, such a connection is needed to implement the run-around heat recovery since the coil in the exhaust duct is a plant supply side component that is at the same time also a component of the air loop.

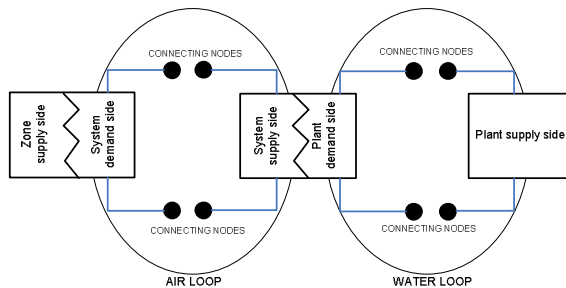


Figure 9: Fluid loops in EnergyPlus.

Thus, we used TRNSYS to model the mechanical system, and coupled it to EnergyPlus to allow an integrated simulation. The simulations were performed using a climate file for Palermo, Italy. The prevailing wind direction (North-East) is selected for the system air intake direction.

The fan augments the wind induced pressure if required to provide sufficient outside air. It has a constant flow rate and an efficiency of 60%.

To estimate the fan energy consumption, simulations were performed for the weeks in summer, spring and winter. The energy consumption was calculated for the system with and without the by pass in the air streams. Figure 10 compares the savings due to the bypass.

For a single windy day (e.g., the 10th of October), the energy saving were 17%. As the wind speed and

direction fluctuates, the average savings are lower. Figure 10 shows savings between 3 to 8%, depending on the season. The savings are the highest for the spring period. The reason for this is that the heating requirements are lower than during the winter, which allowed for more hours where the heat exchangers were by-passed. In addition, free cooling by the ambient air can be used during more hours than in the summer.

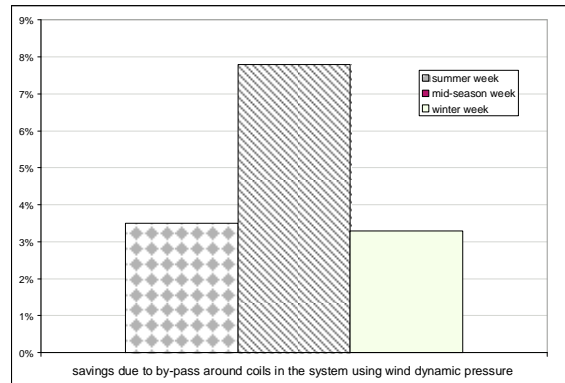


Figure 10: Comparison of energy saving potentials.

CONCLUSIONS

Using co-simulation for BPS is beneficial since:

- There is no single tool that can be used to solve all energy analysis problems encountered by designers.
- Each tool can immediately benefit from future simulation models developments of emerging technologies.
- Rapid prototyping of new technologies can be done using an equation-based simulation tool.
- Multi-scale modelling and simulation can be used by combining building and system models that use different spatial and temporal resolutions.

Analysis showed that the partitioned numerical schemes used to approximate solution of a system of ordinary differential equations are zero-stable, consistent and thus convergent.

Numerical experiments of the validation study showed that loosely coupled co-simulation with sufficiently small time steps can generate results with the same accuracy as mono-simulation. However, with respect to computation time and ease of implementation, the loose coupling strategy with smaller time steps is recommended.

In our comparison of different co-simulation strategies, we observed shorter computation time for inter-domain system decomposition.

The developed co-simulation prototypes were used in a case study, which showed that co-simulation enables the combination of complementary features that are available in the coupled tools. Co-simulation facilitated a fully integrated design analysis, which

would not have been possible if any of the BPS tools were used individually.

ACKNOWLEDGEMENTS

This research was supported by the Assistant Secretary for Energy Efficiency and Renewable Energy, Office of Building Technologies of the U.S. Department of Energy, under Contract No. DE-AC02-05CH11231.

REFERENCES

- Aasem, E.O., 1993. Practical simulation of buildings and air-conditioning systems in the transient domain. Thesis (PhD). University of Strathclyde, Glasgow, Scotland.
- Carroll, W.L. and Hitchcock, R.J., 2005. DELIGHT2 daylighting analysis in EnergyPlus: Integration and preliminary user results. In: Proceedings of 9th International IBPSA Conference Montreal, Canada: International Building Performance Simulation Association.
- Djunaedy, E., 2005. External coupling between building energy simulation and computational fluid dynamics. Thesis (PhD). Technische Universiteit Eindhoven.
- Hensen, J.L.M., 1991. On the thermal interaction of building structure and heating and ventilating system. Thesis (PhD). Eindhoven University of Technology.
- Huang, J., et al., 1999. Linking the COMIS multi-zone air flow model with the EnergyPlus Building Energy Simulation Program. In: Proceedings of 6th International IBPSA Conference Kyoto, Japan: International Building Performance Simulation Association.
- Janak, M., 1999. Coupling building energy and lighting simulation. In: Proceedings of 5th International IBPSA Conference, Vol. 2 Kyoto, Japan: International Building Performance Simulation Association, 307-312.
- Judkoff, R. and Neymark, J., 1995. IEA BESTEST. Technical report of cooperative project between IEA Solar Heating and Cooling Task 12B and IEA Energy Conservation in Buildings and Community Systems Annex 21C.
- Keilholz, W., 2002. TRNSYS World-wide. The journal of the international building performance simulation association, *ibpsaNEWS*, 12 (1).
- Kubler, R.E.A. 2000. Two methods of simulator coupling. Mathematical and computer modelling of dynamic systems, 6(2):93-113.
- Kummert, M., Bradley, D., and Dowell, T.M., 2004. Combining different validation techniques for continuous software improvement - Implications in the development of TRNSYS 16. In: Proceedings of ESIM 2004 Conference Vancouver, Canada.
- Lambert, J.D., 1991. Numerical methods for ordinary differential systems, the initial value problem. West Sussex, U.K.: John Wiley & Sons.
- McDowell, T.P., Emmerich, S., Thornton, J.W., and Walton, G., 2003. Integration of Air flow and Energy Simulation Using CONTAM and TRNSYS. ASHRAE Transactions, 109 (1).
- Neymark, J. and Judkoff, R. 2002. IEA HVAC BESTEST volume 1, Technical report, National Renewable Energy Laboratory Technical report of a IEA Solar Heating and Cooling programme project.
- Neymark, J. and Judkoff, R. 2004. IEA HVAC BESTEST volume 2, Technical report, National Renewable Energy Laboratory Technical report of a IEA Solar Heating and Cooling programme project.
- Park, K.C. 1980. Partitioned transient analysis procedures for coupled-field problems: Stability analysis. *Journal of Applied Mechanics*, 47:370-376.
- Trcka, M., 2008. Co-simulation for Performance Prediction of Innovative Integrated Mechanical Energy Systems in Buildings. Thesis (PhD). Eindhoven University of Technology, Eindhoven, The Netherlands.
- Trcka-Radosevic, M., Hensen, J., and Wijsman, A., 2006. Integrated building and system simulation using run-time coupled distributed models. ASHRAE Transactions, 112 (1), 719-728.
- Tseng, P.H., Sciortino, A., and van Genuchten, M.T., 1995. A partitioned solution procedure for simulating water flow in a variably saturated dual-porosity medium. *Advances in Water Resources*, 18 (6), 335-343.
- Wetter, M. and Haves, P., 2008. A modular Building Controls Virtual Test Bed for integration of heterogeneous systems. In Proc. of 3rd SimBuild Conference, IBPSA-USA, Berkeley, CA, USA.
- Yahiaoui, A., Hensen, J.L.M., and Soethout, L., 2004. Developing CORBA-based distributed control and building performance environments by run-time coupling. In: Proceedings of ICCCBE-X
- Zhai, Z., 2003. Developing an Integrated Building Design Tool by Coupling Building Energy Simulation and Computational Fluid Dynamics Programs. Thesis (PhD). Massachusetts Institute of Technology, USA.