

## New data on *Siciliaria septemplicata* (R.A. Philippi, 1836) complex (Gastropoda Clausiliidae) from the surroundings of Palermo (NW-Sicily, Italy)

Ignazio Sparacio<sup>1\*</sup>, Roberto Viviano<sup>2</sup>, Fabio Liberto<sup>3</sup>, Agatino Reitano<sup>4,5</sup> & Salvatore Surdo<sup>6</sup>

<sup>1</sup>Via Principe di Paternò 3, 90144 Palermo, Italy, e-mail: edizionidanaus@gmail.com

<sup>2</sup>Via Michele Cipolla 106, 90123 Palermo, Italy; e-mail: roberto.viviano3@outlook.com

<sup>3</sup>Via del Giubileo Magno 93, 90015 Cefalù, Italy; e-mail: fabioliberto@yahoo.it

<sup>4</sup>Museo Civico di Storia Naturale, via degli Studi 9, 97013 Comiso (Ragusa), Italy

<sup>5</sup>External collaborator of Museo della Fauna del Dipartimento di Scienze Veterinarie dell'Università di Messina; e-mail: tinohawk@yahoo.it

<sup>6</sup>Dipartimento di Scienze agrarie, alimentari e forestali, Viale delle Scienze Edificio 4, 90128 Palermo, Italy; e-mail: salvatore.surdo@unipa.it Orcid: 0000-0002-0300-837X

\*Corresponding author

---

### ABSTRACT

*Siciliaria septemplicata* (R.A. Philippi, 1836) (Gastropoda Clausiliidae) endemic from northwestern Sicily (Italy) is revised, using shell and genital characters. The diversity of the species complex, the taxonomic history, faunal data and distributional relationships are examined. *Siciliaria septemplicata vincentii* n. ssp. and *S. septemplicata mariastellae* n. ssp. from the surroundings of Palermo are here described.

### KEY WORDS

*Siciliaria*; door snails; new subspecies; taxonomy; biodiversity; Sicily.

Received 18.11.2022; accepted 04.01.2023; published online 18.03.2023

---

### INTRODUCTION

Since the early 1800s the Palermo surroundings were one of the most studied and cited locality in Sicilian natural science research. The great biodiversity of these natural environments have been the subject of numerous scientific papers and a lot of new taxa were described from localities inside or adjacent to the old city of Palermo. This is also true for land molluscs. Many Italian and European authors, such as Philippi (1836, 1844), Rossmässler (1835–1837), Calcara (1843, 1845), Benoit (1857–1862, 1875, 1882) and Monterosato (1892) listed dozens of living species around Palermo describing new species.

In the present paper we will examine the populations of the *Siciliaria septemplicata*

(Philippi, 1836) complex (Gastropoda Clausiliidae), an endemic species to Palermo surroundings, based on new samples and historical material preserved in museums. An overview of the related taxa is provided; two new subspecies are described and the distributional relationships are discussed; additional molecular genetics data will form the subject of a forthcoming publication.

### MATERIAL AND METHODS

Empty shells and living specimens were collected in the field on sight on the soil, under rocks, and in crevices of limestone walls. Observations on ecology of these organisms were made directly in the field. The shells were cleaned

with an alternate and repeated washing in sodium hypochlorite and hydrogen dioxide for a few minutes, and subsequently brushed under running water with a flat tipped and hard bristles paintbrush. Dry shells have been studied regarding the morphological characters; in order to study and to illustrate genital organs, some specimens were put in water and fixed in 80% ethanol. The bodies were isolated from the shells and dissected under the Optika stereomicroscope using a very fine pointed scalpel, scissors and needles. Photos were taken with a Canon EOS 100D camera. Height and maximum diameter of the shell along with some parts of genitalia were measured (in millimeters) by a digital calipers. Taxonomical references are based on the checklist of the Italian land and freshwater molluscs (Bodon et al., 2021) and MolluscaBase (2022). In the shell description, apertural elements are defined: plicae or lamellae if they consist of elongated spiral structures situated in the palatum or parietum and columella respectively. The part of the cervix beside the basal keel is called cervical swelling or, if more distinct, dorsal keel. For the lower palatal plicae the following terms are used: posterior part = subclaustralis, anterior part = basalis (ALPL). In the anatomical description, proximal denotes the part which is closer to the gonad and distal the part which is closer to the gonopore. The proximal female genitalia, sometimes indicated in the tables, are not described because they are not informative.

The collection localities are listed according to the following scheme: municipality, collecting station, geographic coordinates, altitude, the names of the collectors and the dates of collection, the number of specimens examined and the public/private collections where the samples are stored. Toponyms are reported following the official IGM 1:25,000 cartography of Italy.

The materials used for this study were preserved in the following Museums and private collections: F. Liberto, Cefalù, Italy (CL); Göteborg Natural History Museum, Sweden (GNM); Museo Civico di Zoologia, Rome, Italy (MCZR); Muséum d'Histoire Naturelle de Genève, Switzerland (MHNG); Natural History Museum University of Florence Zoological Section "La Specola", Florence, Italy (MZUF); A. Reitano, Tremestieri Etneo, Italy (CR); Senckenberg Museum Frankfurt, Germany (SMF); I. Sparacio, Palermo, Italy (CS), R. Viviano, Palermo, Italy (CV).

ABBREVIATIONS AND ACRONYMS. A: atrium; ALPP: anterior lower palatal plica (basalis); AP1: distal annular pad; AP2: proximal annular pad; AUPP1 and AUPP2: anterior upper palatal plicae; BC: bursa copulatrix; CL: columellar lamella; D: shell maximum diameter; DBC: diverticulum of the bursa copulatrix; E: epiphallus; ex/x: specimen/s; ELP: epiphallar longitudinal pleats; ex/x: specimen/s; FD: First duct of the bursa coluplatrix; FO: free oviduct; G: penial pseudopapilla; H: shell maximum height; HA: aperture maximum height; IPP: inner penial pleats; leg.: legit; L: lunella; m: meter/s; mm: millimeter/s; P: penis; PL: parietal lamella; PP: principal plica; PR: penial retractor muscle; PUPP: posterior upper palatal plica; R2: ribs number on 2 mm of the penultimate whorl; SCL: subcolumellar lamella; SCLA: subclaustralis plica; SD: second duct of the bursa copulatrix; sh: shell/s; SL: spiral lamella; SP: sutural plica; SUL: sulcalis plica; UOS: uterine ovispermiduct; V: vagina; VD: vas deferens; WA: aperture maximum width.

## RESULTS

*Siciliaria septemplicata septemplicata* (R.A. Philippi, 1836) (Figs. 1–9)

*Clausilia septemplicata* - Philippi, 1836: 139, Pl. 8, fig. 22

*Clausilia sericina* - Rossmässler, 1836: 7, Fig. 161

*Clausilia septemplicata* - Calcara, 1840: 15

*Clausilia septemplicata* - Benoit, 1876: 151

*Clausilia (Siciliaria) septemplicata* Var. *nova* Bourg. - Monterosato, 1894: 170

*Clausilia (Delima) allyphanta* - Westerlund, 1894: 192–193

*Clausilia (Siciliaria) septemplicata* - Westerlund, 1901: 41

*Delima (Siciliaria) septemplicata* - A.J. Wagner, 1925: 54–56, Pl. 3, fig. 24

*Delima (Siciliaria) septemplicata septemplicata* - Alzona, 1971: 90

*Charpentieria septemplicata* - Beckmann, 2004: 188

*Siciliaria septemplicata* - Welter-Schultes, 2012: 343

*Siciliaria septemplicata* - Nordsieck, 2013: 6

*Charpentieria septemplicata* - De Mattia, 2017

*Siciliaria septemplicata* - Bodon et al., 2021

*Siciliaria septemPLICATA* - De Mattia et al., 2021: 38–40, Figs 1.F, 9.1–9.2, 10.1–10.7, 13.9–13.11

EXAMINED MUSEUM MATERIAL. *Clausilia septemPLICATA*. Possible syntype, SMF 304531, 1 ex H.G. Bronn collection (from Philippi collection - Zoological Institute University Heidelberg n. 957. Panormus).

*Clausilia septemPLICATA nova* Monterosato, 1894. Syntypes, MCZR-M-6411 (Fig. 7), 8 exx, 2 labels: “Cl. nova *Bourg. Palermo* / Cl. *calcarae Phil.?*” - “*Clausilia nova. / Bourg. Palermo*”. MCZR-M-6416 (Fig. 8), 1 ex, 2 labels: “*S. Polo! alle Balate / Palermo 1891*” - “Cl. ..., *Monts. mss. / = C. nova Bourg. mss. / = C. septemPLICATA, Benoit Ill. Sist. tav. 4 fig. 20*”.

*Clausilia (Delima) allyphanta* Westerlund, 1894. Syntype, GNM-2662 (Fig. 9) 1 ex, 3 labels: “*Cl. allyphanta W. / Ubi ?*” - “*Clausilia (Delima) Rev. allyphanta W = Siciliaria septemPLICATA (Philippi) / Syntyp / Ubi ? / 2662*” - “=*Siciliaria septemPLICATA (Philippi) / H. Nordsick vidi mars 1999*”.

MATERIAL EXAMINED. Italy, Sicily, Palermo, Oreto River Valley near Sant’Orsola cemetery, 2.VI.1979, 4 exx (CS 5480); Palermo, Pagliarelli, 10.VI.1980, 2 exx (CS 5481); Palermo, Oreto River Valley near Sant’Orsola cemetery, 10.VI.1980, 5 exx (CS 5482); Palermo, Botanical Garden, 16.XI.1983, 8 exx (CS 5483); Palermo, Villa Malfitano-Whitaker, 38°07’21”N 13°20’29”E, 35 m, from 2011 to 2012, 36 exx (CV); Palermo, Guadagna, Oreto River Valley, 38°05’50”N 13°21’32.52E, 35 m, 12.V.2016, 2 exx (CV); Palermo, Botanical Garden, 38°06’43”N 13°22’25”E, 10 m, 9.IX.2017, 6 exx; idem, 16.X.2020, 7 exx (CV); Palermo, Fossa della Garofala, 38°06’12”N 13°20’40.2”E, 44 m, 21.IX.2017, 6 exx (CV); idem, 38°06’04”N 13°20’40.8”E, 50 m, 24.IV.2019, 2 exx (CV); idem, 38°06’06.20”N 13°20’40.6”E, 47 m, 28.V.2019, 9 exx (CV); Palermo, Altarello, Fondo Micciulla, 38°06’24”N 13°19’55”E, 80 m, 21.V.2021, 6 exx (CV); Palermo, Via Francesco Speciale, 38°6’21.57”N 13°20’4.74”E, 64 m, 11.VII.2002, 2 exx (CR).

*Siciliaria septemPLICATA prasina* A. Schmidt, 1868 (Figs. 10–16)

*Clausilia proxima* - Benoit, 1859: Pl. 6, Fig. 19

*Clausilia septemPLICATA* var. *prasina* - A. Schmidt, 1868: 41

*Clausilia prasina* - Benoit, 1876: 151

*Clausilia (Siciliaria) septemPLICATA* Var. *prasina*, Paulucci, 1878; table p. 13, n 322

*Clausilia septemPLICATA* Phil. forma *prasina* (Ben.) A. Schm. - Boettger, 1879: 86, Fig. 1727

*Clausilia proxima* - Benoit, 1882: 143

*Clausilia (Siciliaria) septemPLICATA prasina* - Westerlund, 1901: 41

*Delima (Siciliaria) septemPLICATA prasina* - Wagner, 1913: Pl. 572, Fig. 14

*Delima (Siciliaria) septemPLICATA prasina* - Alzona, 1971: 91

*Clausilia (Siciliaria) septemPLICATA* Var. *prasina* - Cianfanelli et al., 2021: 79, Fig. 56 (Fig. 15)

*Siciliaria septemPLICATA* - De Mattia, 2021: 38-40, Figs 1.F, 9.1–9.2, 10.1–10.7, 13.9–13.11

EXAMINED MUSEUM MATERIAL. MCZR-M-6419 (Fig. 16), 6 exx, 1 label: “Cl. *trinacrina / Benoit / Sferracavallo*”.

MHNG-MOLL-109337, Bourguignat collection, 8 exx 1 label: “*Clausilia trinacrina Brgt. / Sicile*”.

MATERIAL EXAMINED. Italy, Sicily, Palermo, Sferracavallo, Barcarello, 23.VII.1978, 3 exx (CS 5484), idem, 2.IV.1980, 7 exx (CS 5485); Palermo, Monte Cuccio, Poggio del Pineto, 38°08’11.3”N 13°16’35.5”E, 22.V.1985, 12 exx (CS 5486) and 12.IV.2021, 6 exx (CS 5487); Palermo, Caves of Contrada Malatacca-Benfratelli near Cervello Hospital, 20.XII.1985, 11 exx (CS 5488); Palermo, Capo Gallo, Faro, 31.VIII.1991, 5 exx (CS 5489); Palermo, Cozzo Sant’Isidoro, 38°07’21”N 13°17’47.3”E, 125 m, 16.V.2021, 5 shells (CS 5490); Palermo, Monte Gallo, Fossa di Barcarello, 38°12’40”N 13°17’32”E, 30–150 m, from 2013 to 2015, 10 exx (CV); Palermo, Petrazzi, Via Inserra, 38°09’09”N 13°18’17”E, 170–260 m, 07.VI.2016, 1 ex (CV); idem, Cozzo San Croce, 38°08’57”N 13°17’37”E, 380 m, 07.VI.2016, 8 exx (CV); Palermo, Monte Gallo, Fossa di Barcarello, Pizzo dell’Avvoltoio, 38°12’32.6”N 13°17’29.6”E, 180 m, 30.V.2020, 9 exx (CV); Palermo, Capo Gallo, Grotta del Faro, 38°13’22.1”N 13°18’58”E, 75 m, 01.V.2021, 29 exx (CV); Palermo, Capo Gallo near the lighthouse, 38°13’24”N 13°18’52”E, 10–25 m, 01.V.2021, 2 exx, legit R. and A. Viviano (CV); Palermo, Cozzo Sant’Isidoro, 38°07’21”N 13°17’47.3”E, 125 m, 16.V.2021, 8 exx (CV); Palermo, Grotta Molara, 38°8’47.46”N 13°18’17.81”E, 106 m, 10.VII.2002, 3 exx (CR)

4.XII.2003, 6 exx (CR); 5.I.2008, 11 exx (CR); Capo Gallo, near the lighthouse, 38°13'23.56"N 13°18'52.22"E, 10–30 m, 2.VI.1999, 3 exx (CR).

**DESCRIPTION** (*Siciliaria septemplicata septemplicata* from Palermo, Fossa della Garofala). Shell mostly not decollate (Figs. 1–4); measurements (shells not decollate): H = 18–21, W = 4.3–5.1, HA = 5.1–5.5, WA = 3.8–4; red-brown in colour; whorls thinly striated (R2 = 16–22) with papillae scattered along the suture; basal keel slightly raised, dorsal keel indistinct or missing; palatum with: a sutural plica; principal plica twice as long as the sutural plica and surpassing the lunella; two anterior upper palatal plicae, which do not reach the lunella; elongated lower palatal plica fused to lunella; subclaustralis plica present; parietum with superior lamella which surpasses the spiral lamella; inferior lamella very high, internally strongly bent towards the parietum to forms an angle of 90° in vertical view; subcolumellar lamella not visible in frontal view. Clausilium subrectangular, palatal edge of clausilium plate distally slightly receding and more or less pointed, plate gutter-like narrowed, palatal edge against distal end bent upwards and more or less pointed.

Genitalia (Figs. 5, 6) characterized by vagina elongated (3.5–3.6 mm), first duct of the bursa copulatrix slightly longer than the vagina (3.8–3.9 mm); second duct of the bursa copulatrix + bursa copulatrix are elongated (5.1–5.3 mm), subcylindrical, longer than the first duct; the diverticulum of the bursa copulatrix (5.5–5.65 mm) longer than second duct + bursa copulatrix; vas deferent slender, entering the apical portion of epiphallus; the epiphallus is divided by point of insertion of robust penial retractor muscle into a distal portion and a shorter proximal portion with an evident epiphallar ring where start the penis; the penis (3.3–3.45 mm) is wider than epiphallus and sub-cylindrical in shape. The genitals internally show: penial walls with two parallel furrows; a penial pseudopapilla short and oval; the penis-epiphallus transition shows a first distal annular ring and a second proximal annular ring from which the penial pseudopapilla originate; wall of the vagina with transverse-oblique, small, irregular and interrupted pleats.

**DISTRIBUTION AND BIOLOGY.** *Siciliaria septemplicata septemplicata* has a restricted distribution limited to Palermo and some surroundings localities (Fossa della Garofala, Parco,

Boccadifalco). Other populations belonging to *S. septemplicata prasina* are widespread in the mountains south-west of Palermo: San Isidoro, slopes of Monte Cuccio up to 300–400 m, rocky walls in the south-western Palermo mountains to Sferracavallo-Grotta Conza and along the slope of Monte Gallo at low altitudes: Barcarello and Capo Gallo. *Siciliaria septemplicata septemplicata* from Monte Catalfano (Sparacio & Lo Brano, 2006) are to be referred to as *S. calcarae calcarae* (R.A. Philippi, 1844).

*Siciliaria septemplicata s.l.* lives on calcareous and arenaceous soils, in limestone walls, under stones, near caves, in shrub and wood litter, but also in gardens.

De Mattia (2017a) considers *S. septemplicata s.l.* as Near Threatened, but its type form has a much smaller distribution and it is strongly threatened by the urban expansion of the city of Palermo. For these reasons, according to the IUCN criteria, it should be considered as Endangered.

**REMARKS.** Philippi (1836) described *Clausilia septemplicata* from the surroundings of Palermo (“*Prope Panormum*”) and among the distinctive morphological characters he mentions the “*corneo* [horn-like]” color and the presence of evident sutural papillae.

Benoit (1859, plate 6, fig. 19) depicted, but did not described, a similar species and sent it to other malacologists with the name *Clausilia proxima*. Subsequently, Schmidt (1868) based on Benoit’s specimens, describes the var. *prasina*, characterized by a lighter color, as reported verbatim: “*Cl. septempl. var. prasina, nach Parreys’s Zeugnis zu Cl. prasina Benoit, ist nur durch hellere (isabellgelbe) Farbe von der Grundform verschieden [Cl. septempl. var. prasina, according to Parreys’s testimonies to Cl. prasina Benoit, differs from the type form only in its lighter (Isabelle yellow) color] (Figs. 10–16).*

Benoit (1882) describes *Clausilia proxima* = *prasina* Schmidt 1868: “*Vive questo mollusco nelle campagne di Palermo... [differisce da septemplicata per] minore dimensione, ..., sempre di colorito corneo pallido, per la deficienza delle papille della sutura, ... Questi caratteri ben marcati la distinguono dalla specie di Philippi [This mollusk lives in the countryside of Palermo ... [differs from septemplicata for] smaller size, ..., always with a pale horn-like color, lack of sutural papillae, ... These well-marked characters distinguish it from Philippi’s species].*

Paulucci (1878) used the name *Clausilia septemPLICATA* Var. *PRASINA* correlating to the fig. 19 of plate 6 by Benoit (1857–1875), therefore this name should be available from Paulucci (1878) had it not already been described by Schmidt (1868) (Cianfanelli et al., 2021). The specimens studied by Paulucci (1878) and depicted in Cianfanelli et al. (2021: 81, fig. 56) show a typical *S. septemPLICATA PRASINA* (Fig. 15).

Also Wagner (1913) and Alzona (1971) regarded “*PRASINA*” as a subspecies of “*SEPTEMPLICATA*”. Nordsieck (2013) rightly claimed that “*PRASINA*” is a copying-mistake of “*PROXIMA*”, caused by illegible labels of Benoit (see also Boettger, 1879 and Benoit, 1875, 1882).

Subsequently, this taxon was regarded, without any differential analysis, as a synonym of *S. septemPLICATA* (Bodon et al., 2021; De Mattia, 2021; Bank & Neubert, 2022).

*Siciliaria septemPLICATA PRASINA* (Figs. 10–14) differs by type form for thinner and slender shell, lighter color, striae and sutural papillae obsolete, vagina shorter, second duct of bursa copulatrix + bursa copulatrix shorter than the first duct (see also De Mattia et al., 2021), a wider western distribution.

*Clausilia* (*S.*) *septemPLICATA* Var. *NOVA* Bourg. (see Monterosato, 1894: “*San Polo*”, Palermo) (Figs. 7, 8) and *C. allyphanta* Westerlund, 1894 (Fig. 9) are synonyms of *S. septemPLICATA SEPTEMPLICATA* (for the latter taxon see Nordsieck, 2013).

De Mattia et al. (2021) summarize the history of *Clausilia trinacrina* Benoit, 1881 whose typical locality should be Monte Cuccio (De Gregorio, 1895; see also Benoit, 1875). The specimens we have observed from the Monterosato collection (Sferracavallo near Palermo) referring to this taxon (Fig. 16), do not have reference to any types and correspond morphologically to the local populations of *S. septemPLICATA PRASINA*; also the examined specimens from Bourguignat collection are attributable to *S. septemPLICATA PRASINA*.

***Siciliaria septemPLICATA VINCENTII* n. ssp.**

Figs. 17–23 - <https://zoobank.org:act:00726D81-DC31-4A8B-AD10-477EF318C553>

*Siciliaria leucophryna* - Reitano et al., 2012: 565, Fig. 18

*Siciliaria leucophryna* - De Mattia et al., 2021: 43, Fig 12.1

TYPE MATERIAL. Holotype, Italy, Sicily, Palermo, Sferracavallo: Grotta Conza, 38°11'14.8"N 13°16'52.1"E, 18.I.1981, leg. I. Sparacio (MZUF) (Fig. 17). Paratypes, same locality as the holotype, 7 exx (CS 5491) (Figs. 18–23); idem, 11.IX.2003, 12 exx (CS 5492); idem, 1 ex (MCZR); idem, 5.V.2021, 13 exx (CS 5493); idem, 3 exx (CL); idem, 20.VII.2005, 23 exx (CR); idem, 01.II.2008, 17 exx (CR); idem, 31.I.2014, 21 exx (CR).

DESCRIPTION. Shell large, usually not decollated; measurements (shells not decollate): H = 20–23.2 mm, D = 5–5.5 mm, HA = 5.4–5.5, WA = 4.1–4.25 mm); greyish-brown in colour; rib striated (R2 = 10–13); two anterior upper palatal plicae; subclaustralis plica obsolete; columellar lamella moderately high, internally little developed and scarcely bent towards the parietum and rounded in vertical view; palatal edge of clausilium plate distally scarcely receding; elongated first duct of bursa copulatrix.

DISTRIBUTION AND BIOLOGY. *Siciliaria septemPLICATA VINCENTII* n. sp. lives on limestone rocks and under stones in a small area near Grotta Conza. It is sympatric to *S. leucophryna leucophryna*. According to the IUCN criteria, it can be classified as Critically Endangered (CR) due to the restricted area in which it lives.

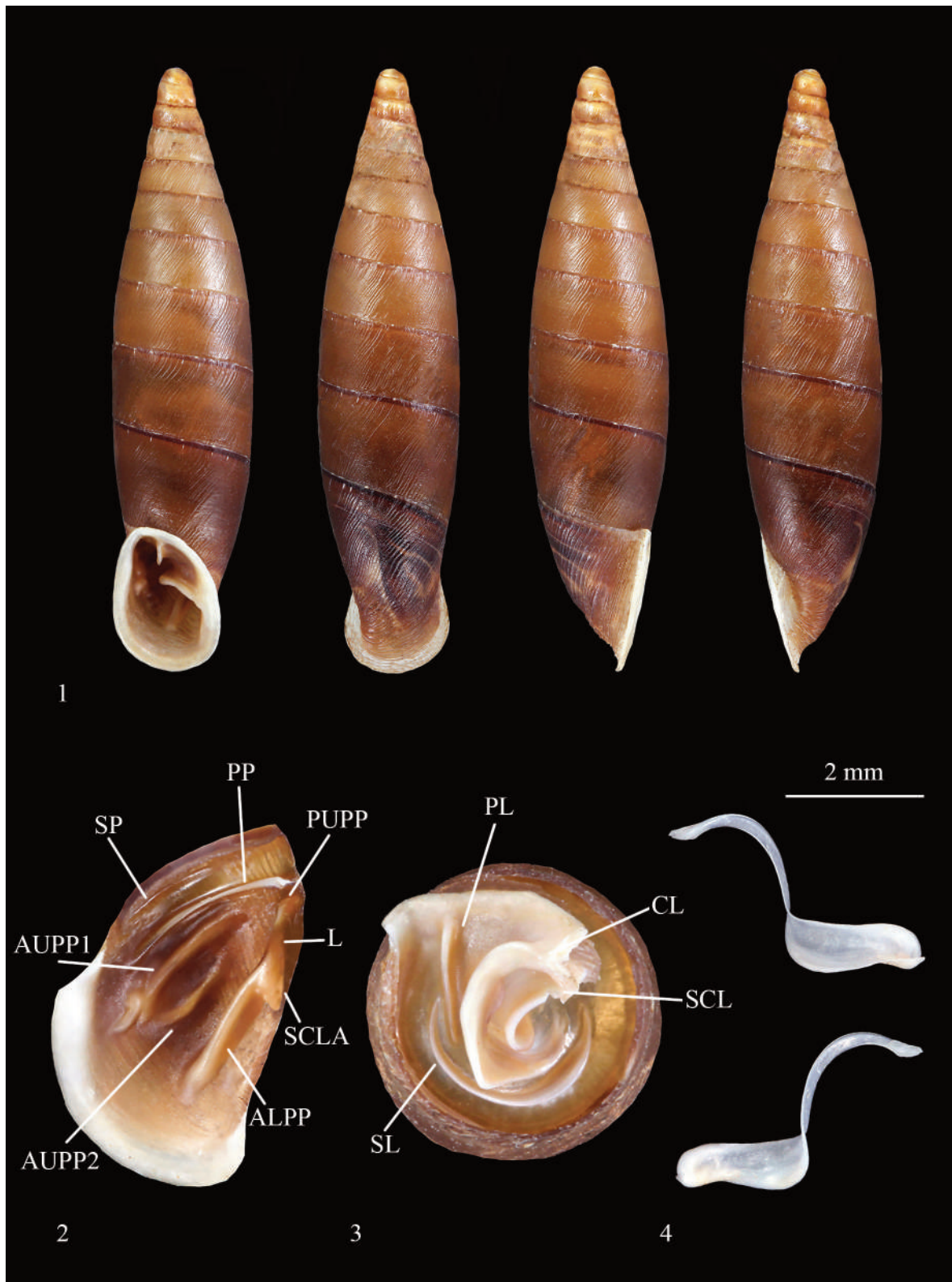
ETYMOLOGY. This new subspecies is dedicated to Vincenzo Di Dio, the director of the nearby Reserve “Isola delle Femmine” (Palermo, Italy).

REMARKS. This new subspecies can be confused with *S. leucophryna leucophryna* due to the greyish-brown, rib-striated shell and the moderately high columellar lamella; however it is easily distinguishable by the presence of two anterior palatal plicae (the lower one absent in *S. leucophryna*). It differs by other *S. septemPLICATA* populations for the bigger shell, the whorls rib-striated, the greyish-brown colour, subclaustralis plica obsolete, shape of the columellar lamella, longer first duct of bursa copulatrix.

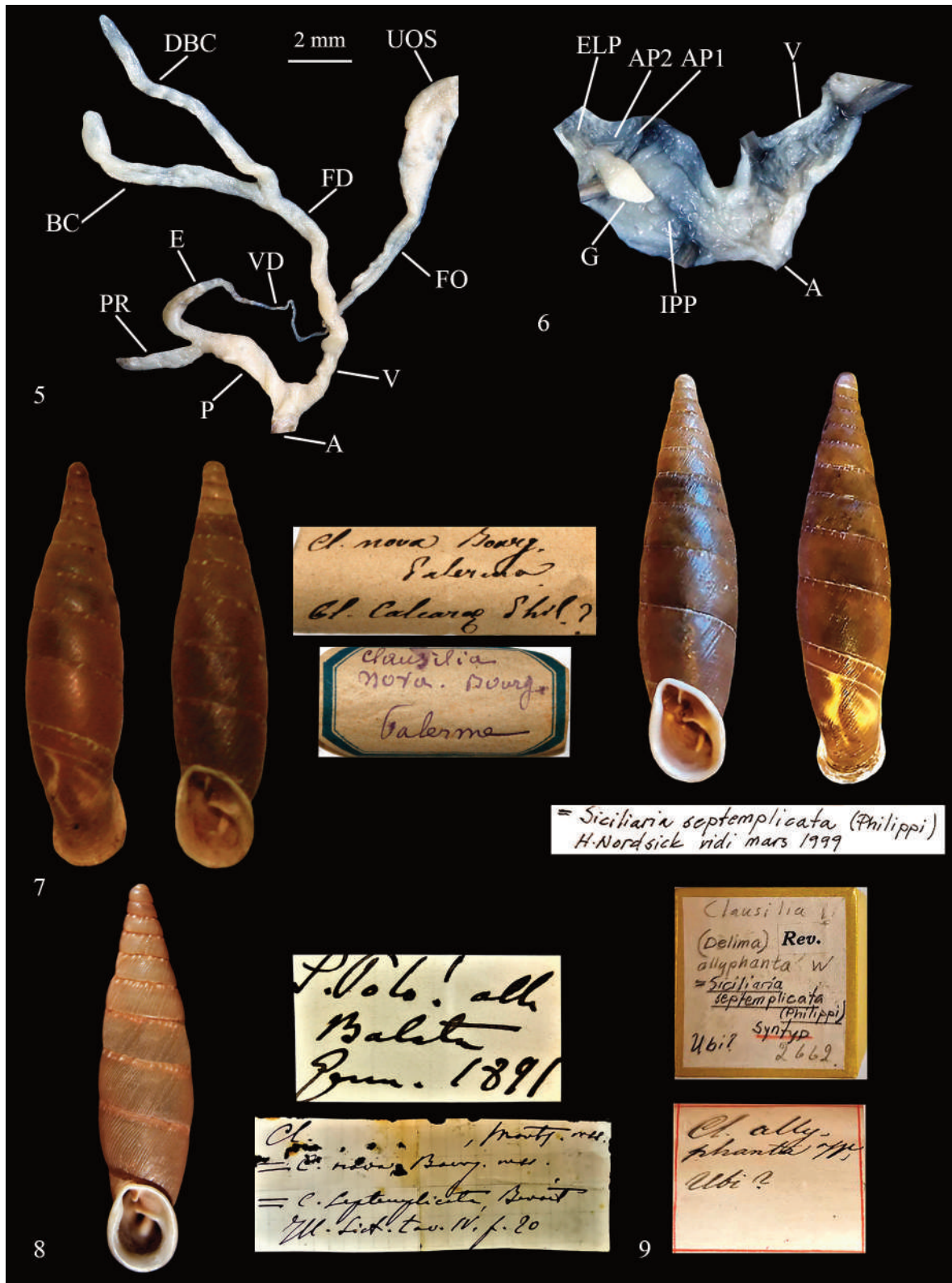
***Siciliaria septemPLICATA MARIASTELLAE* n. ssp.**

Figs. 24–30 - <https://zoobank.org:act:77750338-C7F2-4349-A52F-0AD80807D51F>

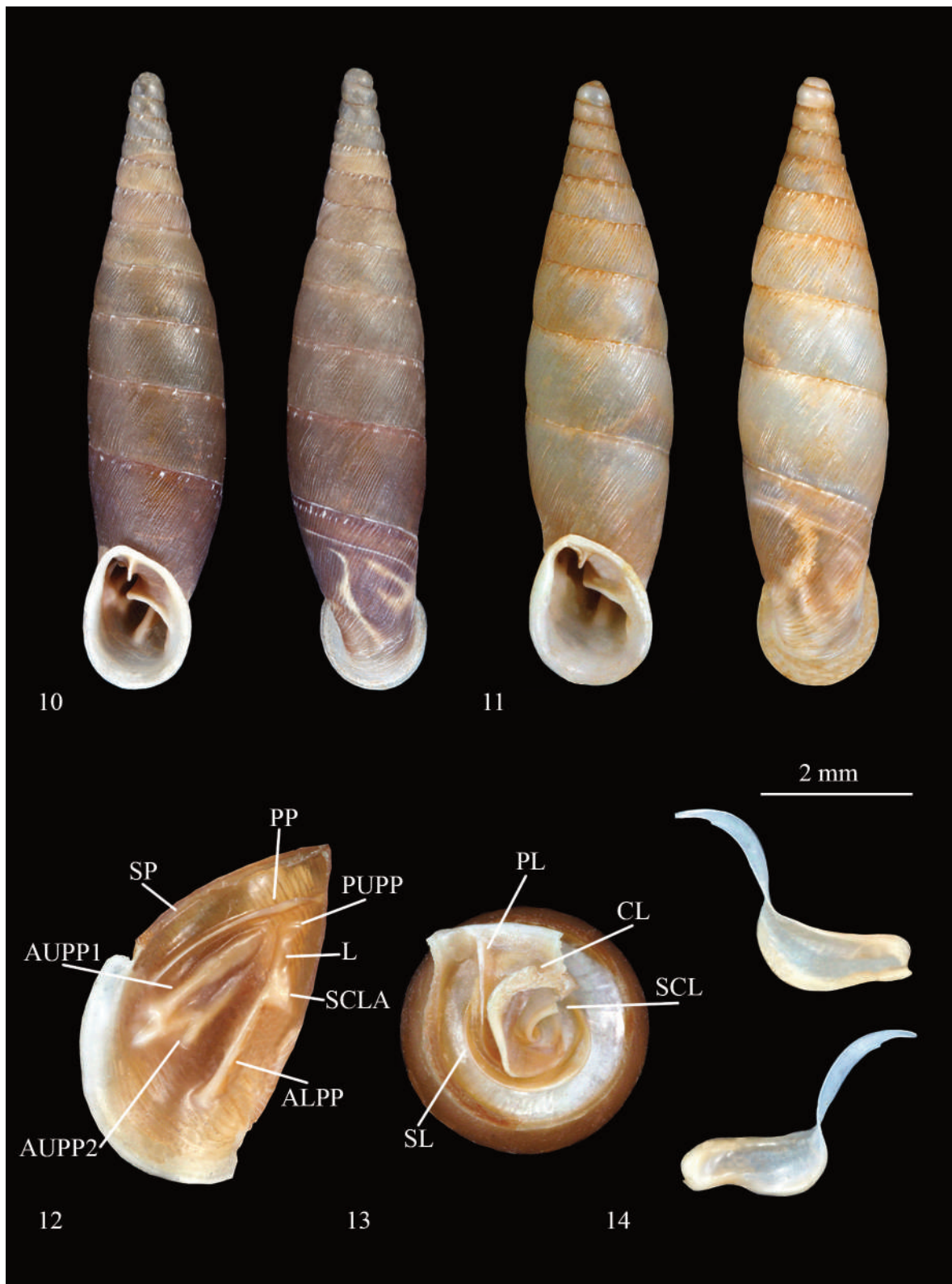
TYPE MATERIAL. Holotype, Italy, Sicily, Palermo, Monte Gallo, Bauso, 38°12'50.4"N 13°18'30.1"E, 16.I.2022, legit I. Sparacio (MCZR) (Fig. 24).



Figures 1–4. *Siciliaria septemplicata septemplicata*, Palermo: Fossa della Garofala.  
 Fig. 1: shell (H = 20.5 mm). Fig. 2: palatum. Fig. 3: Parietum. Fig. 4: clausilium.



Figures 5, 6. *Siciliaria septemplicata septemplicata*, Palermo: Fossa della Garofala. Fig. 5: genitalia. Fig. 6: inner penis. Figures 7, 8. *Clausilia septemplicata nova*. Fig. 7: MCZR-M-6411. Fig. 8: MCZR-M-6416. Figure 9. *Clausilia allyphanta* Westerlund, 1894 (H = 20 mm) with labels (GNM syntype 2662).

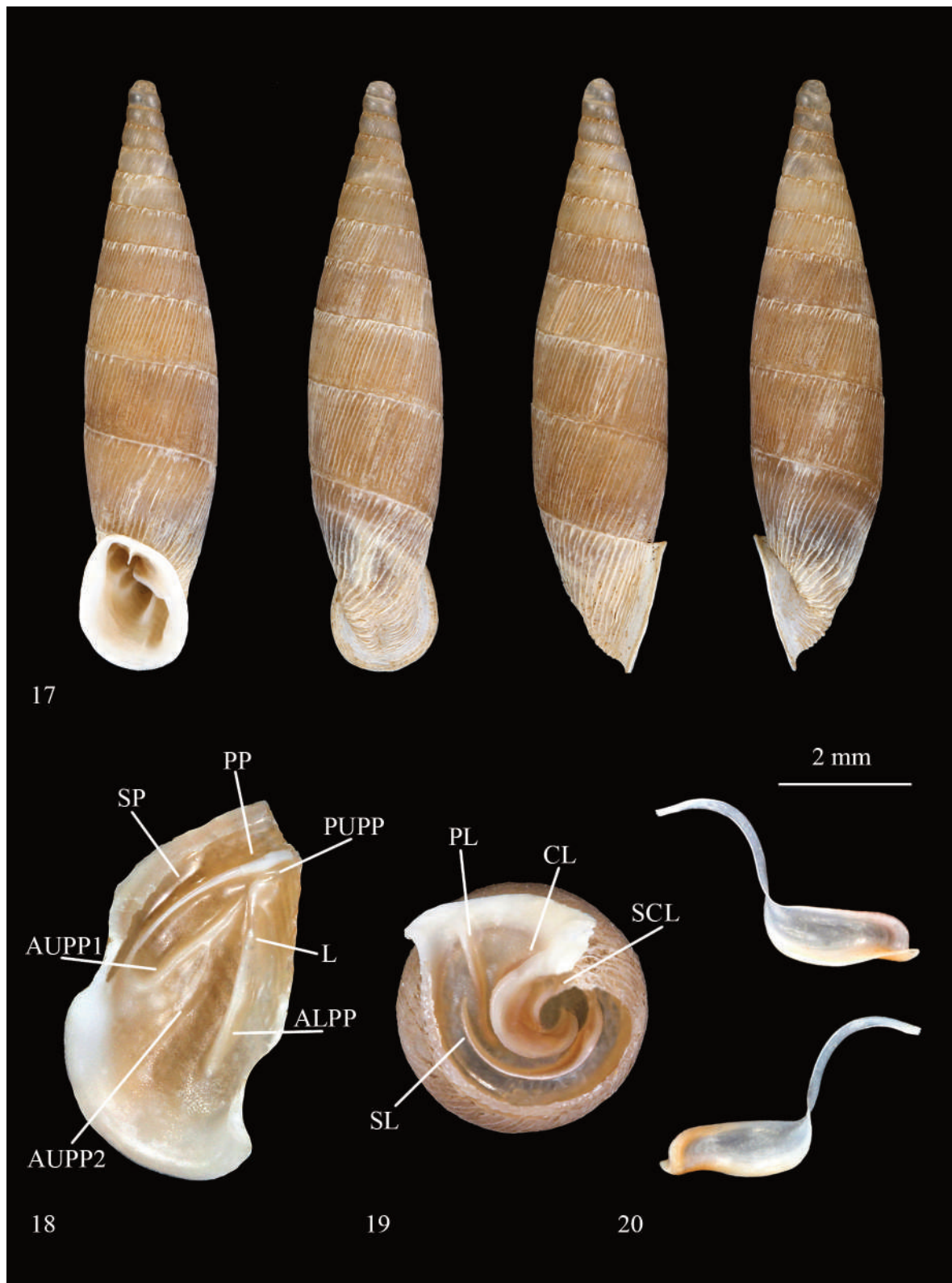


Figures 10–14. *Siciliaria septemplicata prasina*. Fig. 10: Barcarello (Sferracavallo, Palermo) H = 19.6 mm. Fig. 11: Grotte di Contrada Malatacca-Benfratelli, Palermo H = 19.4 mm. Fig. 12: idem, palatum. Fig. 13: idem, parietum. Fig. 14: idem, clausilium.

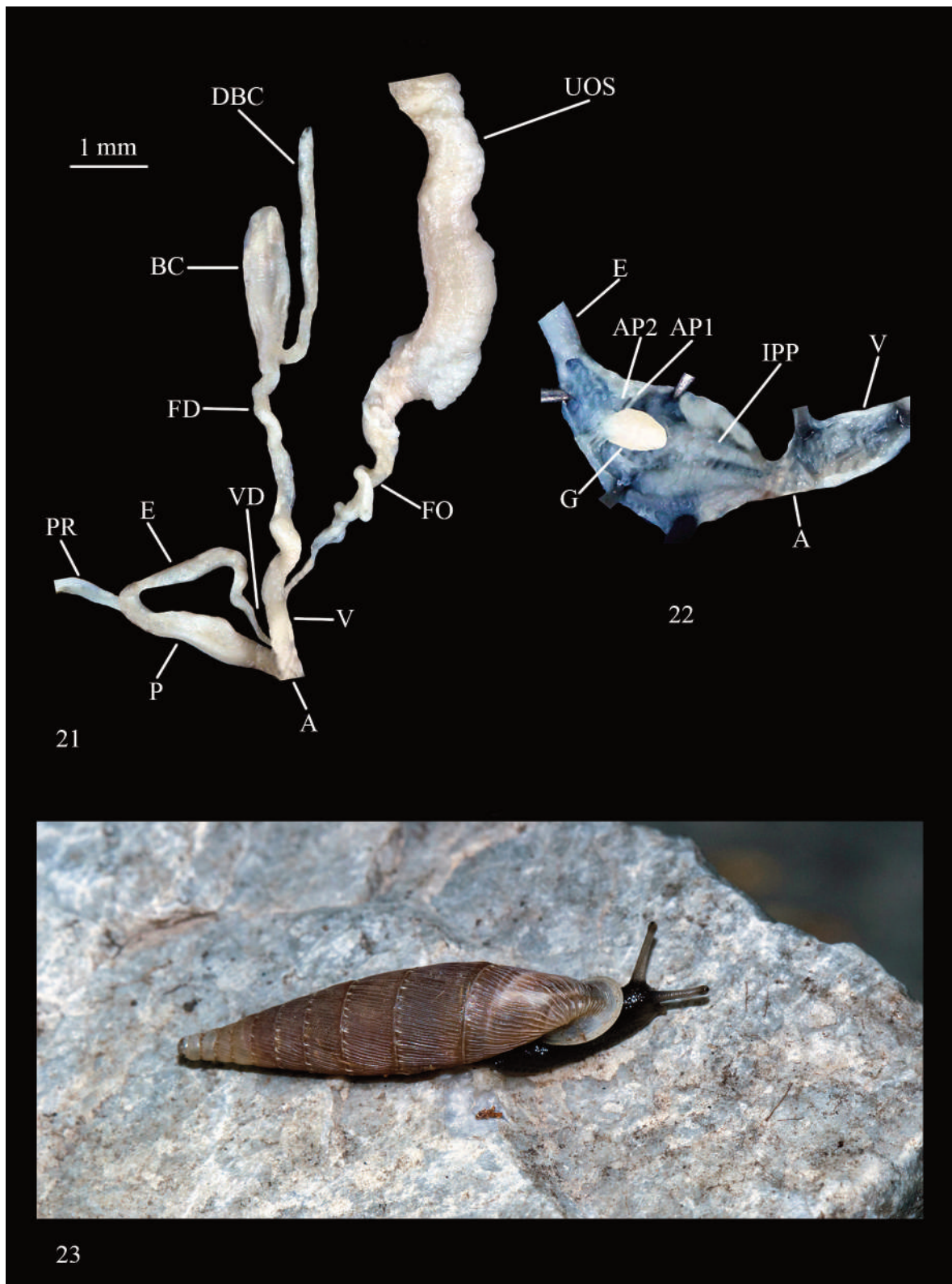




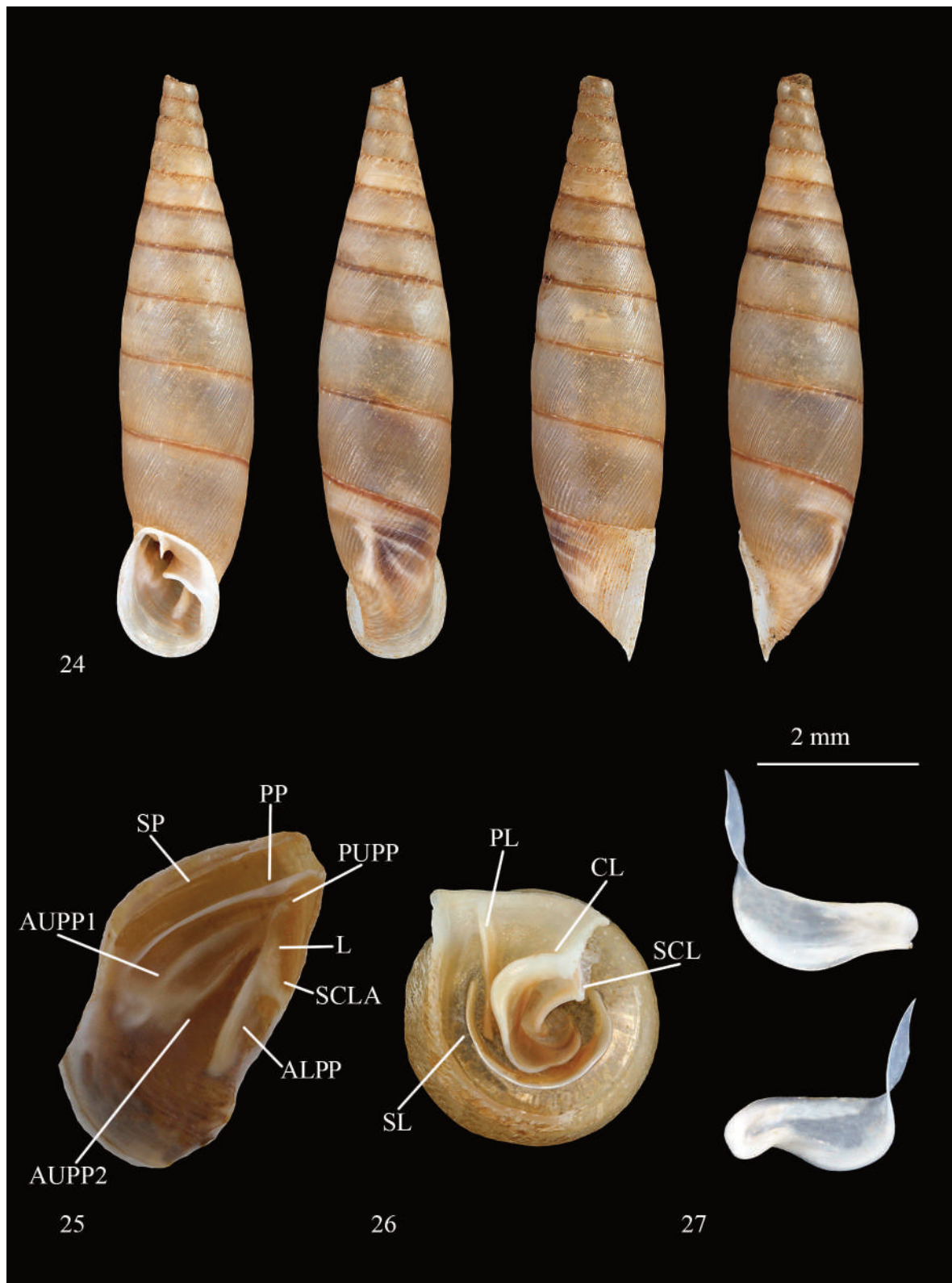
Figures 15, 16. *Siciliaria septemPLICATA prasina*. Fig. 15: specimen from Paulucci collection (Cianfanelli et al., 2021: 81, fig. 56). Fig. 16: *Clausilia trinaerina* (Serravallo) from Monterosato collection (MCZR-M-6419).



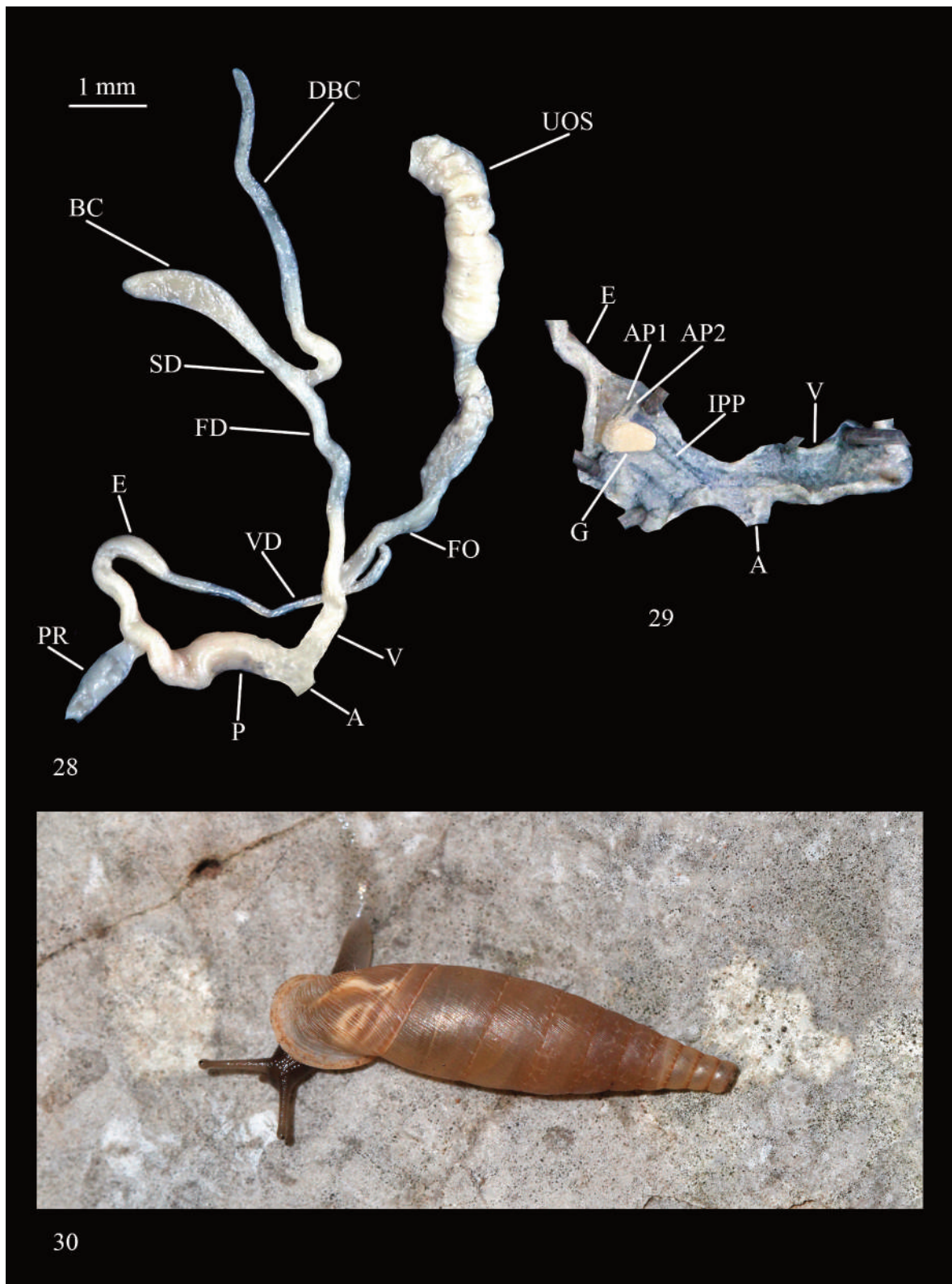
Figures 17–20. *Siciliaria septemplicata vincentii* n. ssp. from Grotta della Conza (Sferracavallo, Palermo). Fig. 17: holotype, H = 21.6 mm. Figs. 18–20: paratypes. Fig. 18: palatum. Fig. 19: parietum. Fig. 20: clausilium.



Figures 21–23. *Siciliaria septemplicata vincentii* n. ssp. from Grotta della Conza (Sferracavallo, Palermo), paratypes. Fig. 21: genitalia. Fig. 22: inner penis. Fig. 23: living specimen.



Figures 24–27. *Siciiliaria septemplexata mariastellae* n. ssp. from Monte Gallo (Palermo). Fig. 24: holotype, H = 21.2 mm. Figs. 25–27: paratypes. Fig. 25: palatum. Fig. 26: parietum. Fig. 27: clausilium.



Figures 28–30. *Siciliaria septemplicata mariastellae* n. ssp. from Monte Gallo (Palermo), paratypes.  
Fig. 28: genitalia. Fig. 29: inner penis. Fig. 30: living specimen.

Paratypes: idem, Monte Gallo, Semaforo, 38°13'02.5"N 13°18'38.2"E, 350 m, 22.IX.1990, 5 exx (CS 5494); idem, 30.XII.2012, 6 exx (CS 5495); idem, 3 exx (CV); idem, 08.I.2016, 7 exx (CV); idem, Monte Gallo, Via del Semaforo, 38°12'53"N 13°18'25"E, 160–390 m, 8.I.2016, 3 exx (CV); idem, Monte Gallo, Bauso, 38°12'50.4"N 13°18'30.1"E, 16.I.2022, 21 exx (CS 5496) (Figs. 25–30); idem, 3 exx (CR); idem, 1 ex (MZUF); idem, Monte Gallo, Piano dello Stinco, 38°13'07"N, 13°18'45"E, 483 m, 30.XII.2012, 2 exx (CL 13740/41).

**DESCRIPTION.** Shell decollated or not; measurements (shells not decollate): H = 19.8–23 mm; D = 5–5.15 mm; HA = 5.1–5.5 mm; WA = 3.9–4 mm; yellowish in colour; striated (R2 = 18–25); sutural papillae very small and scattered or completely absent; dorsal keels slightly distinct; subclaustralis plica present; columellar lamella very high, internally bent towards the parietum, forming a rounded angle in vertical view; palatal edge of clausilium plate proximally broadly curved, distally strongly receding and scarcely pointed.

**DISTRIBUTION AND BIOLOGY.** *Siciliaria septemplicata mariastellae* n. ssp. is an endemic subspecies of Monte Gallo, north of Palermo. It lives from 100–200 m of altitude up to the top (527 m, Semaforo). At lower altitudes (Barcarello, Capo Gallo) we found *S. septemplicata prasina*.

*Siciliaria septemplicata mariastellae* n. ssp. lives on calcareous soil, under stones and vegetal debris, in uncovered places or even in forest areas (*Pinus* sp.).

According to the IUCN criteria, this new subspecies can be classified as Critically Endangered (CR) due to the restricted area in which it lives.

**ETYMOLOGY.** This new taxon is dedicated to Maria Stella Colomba (Urbino, Italy), our dear friend and colleague.

**REMARKS.** *Siciliaria septemplicata mariastellae* n. ssp. differs from other *S. septemplicata* populations for the yellowish color, reduced sutural papillae, more prominent dorsal keel, the shape of the columellar lamella (less high, less protruding forward and forming an angle of 90° internally in other populations); palatal edge of clausilium plate proximally more curved and distally more receding.

Genetically it is the most diverse population of *S. septemplicata* (personal data).

## ACKNOWLEDGEMENTS

We thank Massimo Appolloni and Carlo Smriglio (Museo Civico di Zoologia, Rome, Italy), Simone Cianfanelli and Enrico Talenti (Natural History Museum University of Florence Zoological Section “La Specola”, Florence, Italy), Andrea Di Giulio e Maurizio Muzi (Dipartimento di Scienze, Università “Roma Tre”, Rome, Italy), Emmanuel Tardy (Muséum d’Histoire Naturelle de Genève, Switzerland). We also want to thank Riccardo Giannuzzi-Savelli (Palermo, Italy), Sigrid Hof and Julia Sigwart (Senckenberg Forschungsinstitut, Sektion Malakologie), Kennet Lundin and Ted von Proschwitz (Gothenburg Natural History Museum, Sweden), Hartmut Nordsieck (Frankfurt am Main, Germany), recently passed away, Anna Persson (Swedish Museum of Natural History, Stockholm, Sweden), Francesco Pusateri (Palermo, Italy), recently passed away, and Walter Renda (Amantea, Italy) for the help received during this work.

## REFERENCES

- Alzona C., 1971. Malacofauna Italiana. Catalogo e bibliografia dei molluschi viventi, terrestri e d’acqua dolce. Atti della Società Italiana di Scienze Naturali e del Museo Civico di Storia Naturale di Milano, 111: 1–433.
- Bank R.A. & Neubert E., 2022. Checklist of the land and freshwater Gastropoda of Europe. Last access: 05.01.2022. <http://www.marinespecies.org/aphia.php?p=sourceget&id=279050>
- Beckman K-H., 2004. Zur Verbreitung der endemischen nordwestsizilianischen Clausiliidae der Untergattung *Charpenteria* (*Siciliaria*) mit Beschreibung von zwei neuen Unterarten (Gastropoda: Stylommatophora: Clausiliidae). Archiv für Molluskenkunde, 133: 185–191.
- Benoit L., 1857–1862. Illustrazione sistematica critica iconografica de’ testacei estramarini della Sicilia Ulteriore e delle isole circostanti. Gaetano Nobile, Napoli, 248 pp., 8 pls. [Quaderno 1.o: pp. i–xvi, 1–52, pls. 1–2 (1857); Quaderno 2.o: pp. 53–116, pls. 3–4 (1857); Quaderno 3.o: pp. 117–180, pls. 5–6 (1859); Quaderno 4.o: pp. 181–248, pls. 7–8 (1862).

- The publication date of three additional plates, 9, 11 and 12, is unknown.].
- Benoit L., 1875. Catalogo delle conchiglie terrestri e fluviatili della Sicilia e delle Isole circostanti. *Bollettino della Società Malacologica Italiana*, 1: 129–163.
- Benoit L., 1882. Nuovo catalogo delle conchiglie terrestri e fluviatili della Sicilia o continuazione alla illustrazione sistematica critica iconografica de' testacei estramarini della Sicilia Ulteriore e delle isole circostanti. Tipografia D'Amico, Messina, 176 pp.
- Bodon M., Cianfanelli S. & Nardi G., 2021. Mollusca (terrestrial and inland water species). In: Bologna M.A., Zapparoli M., Oliverio M., Minelli A., Bonato L., Cianferoni F. & Stoch F. (Eds.), Checklist of the Italian Fauna. Version 1.0. Last access: 10.01.2023. <https://www.lifewatchitaly.eu/en/initiatives/checklist-fauna-italia-en/checklist/>
- Boettger O., 1879. Gattung *Clausilia* Drap., in Kobelt W., *Iconographie der Land- & Süßwasser-Mollusken mit vorzüglicher Berücksichtigung der europäischen noch nicht abgebildeten Arten von E. A. Rossmässler*. VI. Band. mit 28 Tafeln. Kreidel, Wiesbaden: 6 (4-6): 52–153, pls 167–178.
- Calcara P., 1840. Monografie dei generi *Clausilia* e *Bulimo*, coll'aggiunta di alcune nuove specie di conchiglie siciliane esistenti nella collezione della Sig. Teresa Gargotta in Salinas. *Giornale di Scienze, Lettere ed Arti per la Sicilia*, 76: 1–54.
- Calcara P., 1843. Descrizione di alcune nuove specie di conchiglie della Sicilia. *L'Occhio* 5: 142–143.
- Calcara P., 1845. Esposizione dei molluschi terrestri e fluviatili dei dintorni di Palermo. *Atti della Accademia di Scienze e Lettere di Palermo (Nuova Serie)* 1: 1–46, Tav. 1.
- Calcara P., 1845. Esposizione dei molluschi terrestri e fluviatili dei dintorni di Palermo. *Atti della Accademia di Scienze e Lettere di Palermo (Nuova Serie)* 1 (3): 1–46, Tav. 1.
- Cianfanelli S., Talenti E., Innocenti G. & Bodon M., 2021. Annotated catalogue of the types of Mollusc taxa described by the Marquise Marianna Panciatici Ximenes d'Aragona Paulucci preserved at the Museum of Natural History of the University of Florence (Part one). *Bollettino Malacologico*, 57: 1–92 (suppl. 12).
- De Gregorio A., 1895. Appunti su talune conchiglie estramarine di Sicilia viventi e fossili con la spiegazione delle tavole dell'opera di Benoit. *Il Naturalista siciliano*, 14: 183–212.
- De Mattia W., 2017. *Charpentieria septemPLICATA*. The IUCN Red List of Threatened Species. <https://www.iucnredlist.org/species/171032/1320290>
- De Mattia W., Reier S. & Haring E., 2021. Morphological investigation of genital organs and first insights into the phylogeny of the genus *Siciliaria* Vest, 1867 as a basis for a taxonomic revision (Mollusca, Gastropoda, Clausiliidae). *ZooKeys* 1077: 1–175. <https://doi.org/10.3897/zookeys.1077.67071>
- Lo Brano V.D. & Sparacio I., 2006. Molluschi terrestri e dulciacquicoli del S.I.C. Rupi di Catalfano e Capo Zafferano (Sicilia) (Gastropoda Neoteanioglossa Pomatiasidae, Basommatophora, Stylommatophora). *Il Naturalista siciliano*, 30: 555–589.
- MolluscaBase eds., 2022. MolluscaBase. Accessed at [www.molluscabase.org](http://www.molluscabase.org) on 2023.01.01
- Monterosato T. Di Maria, 1892. Molluschi terrestri delle isole adiacenti alla Sicilia. *Atti della Reale Accademia di Scienze, Lettere ed Arti*, 3° serie, 34 pp.
- Monterosato T. Di Maria, 1894. Conchiglie terrestri viventi e fossili di Monte Pellegrino. *Il Naturalista siciliano*, 13: 165–173.
- Nordsieck H., 2013. Revisory remarks on the species of *Siciliaria* Vest from N.W. Sicily. Available at: <http://www.hnords.de/5356429d6b11adc0b/535642a1dc1365e05/> (last access: November 26th 2022).
- Paulucci M., 1878. Matériaux pour servir à l'étude de la faune malacologique terrestre et fluviatile de l'Italie et de ses îles. Savy, Paris: iv + 54 pp.
- Philippi R.A., 1836. *Enumeratio molluscorum Siciliae cum viventium tum in tellure tertiaria fossilium, quae in itinere suo observavit*. [Vol. 1]. [I–XIV = 1–14], 267 pp. [[1], Tab. I–XII [= 1–12]. Berolini] <https://doi.org/10.5962/bhl.title.100735>
- Philippi R. A., 1844. *Enumeratio molluscorum Siciliae cum viventium tum in tellure tertiaria fossilium quae in itinere suo observavit. Volumen secundum continens addenda et emendanda, nec non comparationem faunae recentis Siciliae cum faunis aliarum terrarum et com fauna periodi tertiariae*. Anton, Halae, 1–4, 1–303 pp., Pls. 13–28.
- Reitano A., Liberto F., Giglio S., Grasso R. & Spina M.T., 2012. Terrestrial molluscs from the R.N.I. "Grotta Conza" (Palermo, Sicily) (Gastropoda Architaenioglossa Pulmonata). *Biodiversity Journal*, 3: 555–570.
- Rossmässler E.A., 1835–1837. *Iconographie der Land und Süßwasser-Mollusken, mit vorzüglicher Berücksichtigung der europäischen noch nicht abgebildeten Arten*. Erster Band. Dresden, Leipzig. (Arnold). Heft 1: [1], I–VI [= 1–6], 1–132, [1–2], Heft 2: [1–2], 1–26, Heft 3: [1–3], 1–33, Heft 4: [1–3], 1–27, Heft 5–6: [1–3], 1–70, Taf. 1–30.
- Schmidt A., 1868. *System der Europäischen Clausilien und Ihrer Nächsten Verwandten*. Th. Fischer, Cassel, [1–2], 176 pp.
- Segre A., 1969. Linee di riva sommerse e morfologia della piattaforma continentale italiana relative alla

- trasgressione marina versiliana. *Quaternaria*, 11: 141–154.
- Wagner A.J., 1925. Studien über die Systematik, Stammesgeschichte und geographische Verbreitung des Genus *Delima* (Hartmann) A.J. Wagner. *Annales Zoologici Musei Polonici Historiae Naturalis*, 4: 1–73.
- Wagner A.J., 1913–1915. Familie Clausiliidae. In: Rossmässler, Iconogr. Land- und Süßwassermollusken (2) 21: 1/2 (1913): 1–20, pls. 571–580; 3/4 (1914): 21–44, pls. 581–590; 5/6 (1915): 45–65, pls. 591–600. Wiesbaden.
- Welter-Schultes F.W., 2012. European non-marine molluscs, a guide for species identification. - pp. A1–A3, 1–679, Q1–Q78. Göttingen (Planet Poster Ed.).
- Westerlund C.A., 1894. Spicilegium malacologicum. Neue Binnen-Conchylien in der paläarktischen Region. V. *Nachrichtsblatt der Deutschen Malakozoologischen Gesellschaft*, 24: 190–205.
- Westerlund C.A., 1901. Synopsis molluscorum in regione palaeartica viventium ex typo *Clausilia* DRAP. *Zapiski Imperatorskoj Akademii Nauk po Fiziko Matematicheskomu Otdeleniju* [Mémoires de l'Académie Impériale des Sciences de St.-Pétersbourg, Classe physico-mathématique] (8) 11 (11): 37 pp., + pp. 1–203, S.-Peterburg.