

Clinical benefits of vortioxetine 20 mg/day in patients with major depressive disorder

Michael C. Christensen¹ , Roger S. McIntyre² , Michael Adair¹ , Ioana Florea¹ , Henrik Loft¹ and Andrea Fagiolini³ 

Original Research

Cite this article: Christensen MC, McIntyre RS, Adair M, Florea I, Loft H, and Fagiolini A (2023). Clinical benefits of vortioxetine 20 mg/day in patients with major depressive disorder. *CNS Spectrums*
<https://doi.org/10.1017/S1092852923002249>

Received: 20 January 2023
 Accepted: 30 March 2023

Keywords:

Major depressive disorder; vortioxetine; response; remission; sustained response; patient functioning

Corresponding author:

Michael Cronquist Christensen;
 Email: MCRC@lundbeck.com

¹H. Lundbeck A/S, Valby, Denmark, ²Mood Disorders Psychopharmacology Unit, University Health Network, University of Toronto, Toronto, ON, Canada and ³Division of Psychiatry, Department of Molecular and Developmental Medicine, University of Siena School of Medicine, Siena, Italy

Abstract

Background. Vortioxetine has demonstrated dose-dependent efficacy in patients with major depressive disorder (MDD), with the greatest effect observed with vortioxetine 20 mg/day. This analysis further explored the clinical relevance of the more rapid and greater improvement in depressive symptoms observed with vortioxetine 20 mg/day vs 10 mg/day.

Methods. Analysis of pooled data from six short-term (8-week), randomized, placebo-controlled, fixed-dose studies of vortioxetine 20 mg/day in patients with MDD ($N = 2620$). Symptomatic response ($\geq 50\%$ decrease in Montgomery-Åsberg Depression Rating Scale [MADRS] total score), sustained symptomatic response, and remission (MADRS total score ≤ 10) were assessed by vortioxetine dosage (20 or 10 mg/day).

Results. After 8 weeks, 51.4% of patients receiving vortioxetine 20 mg/day had achieved symptomatic response vs 46.0% of those receiving vortioxetine 10 mg/day ($P < .05$). Significantly more patients achieved symptomatic response vs placebo from week 2 onwards for vortioxetine 20 mg/day and from week 6 onwards for vortioxetine 10 mg/day (both $P \leq .05$). Sustained response was achieved from week 4 for 26.0% of patients receiving vortioxetine 20 mg/day vs 19.1% of those receiving vortioxetine 10 mg/day ($P < .01$), increasing to 36.0% and 29.8%, respectively, over the 8-week treatment period ($P < .05$). At week 8, 32.0% of patients receiving vortioxetine 20 mg/day were in remission vs 28.2% of those receiving vortioxetine 10 mg/day ($P = .09$). Rates of adverse events and treatment withdrawal were not increased during the week following vortioxetine dose up-titration to 20 mg/day.

Conclusion. Vortioxetine 20 mg/day provides more rapid and more sustained symptomatic response than vortioxetine 10 mg/day in patients with MDD, without compromising tolerability.

Introduction

Early optimized antidepressant therapy in patients with major depressive disorder (MDD) is important for achieving full symptomatic and functional recovery.^{1–4} Clinical guidelines recommend that patients should be assessed for improvement within 2 weeks of treatment initiation to permit early dose adjustment or change of antidepressant medication in those with inadequate response.^{5–7} Early response to antidepressant therapy has been shown to be predictive of remission and recovery in patients with MDD.^{8–13} Patients experiencing early improvement on antidepressant therapy (defined as $\geq 20\%$ reduction in Hamilton Rating Scale for Depression [HAM-D] score from baseline after 2 weeks of treatment) were found to be at least three times more likely to achieve sustained response (i.e., $\geq 50\%$ reduction in HAM-D score from baseline at 6 weeks) than patients showing later improvement.¹⁴

Conversely, lingering residual symptoms appear to contribute toward a more severe, relapsing, and chronic future course of depression.^{15,16} In the National Institute of Mental Health Collaborative Depression Study, patients with residual subthreshold depressive symptoms experienced shorter time to first relapse, longer and more severe episodes of depression, and greater disease burden over 10–20 years of follow-up than those who achieved asymptomatic recovery.¹⁶ Similarly, patients who continue to experience functional impairment after remission of core depressive symptoms have been shown to be almost four times more likely to relapse over 12 months of follow-up than those without residual functional impairment.¹⁷

Vortioxetine is a multimodal antidepressant shown to be efficacious and well tolerated for the treatment of MDD across the approved dosage range of 5–20 mg/day.^{18,19} Vortioxetine is one of the few antidepressants shown to have a clear dose–response relationship across the spectrum of symptoms experienced by patients with MDD, including depressive, cognitive, physical, and anxiety symptoms, and functional impairment, both in randomized, controlled clinical trials^{20–28} and in observational studies in routine clinical practice settings.^{29,30}

© The Author(s), 2023. Published by Cambridge University Press. This is an Open Access article, distributed under the terms of the Creative Commons Attribution licence (<http://creativecommons.org/licenses/by/4.0>), which permits unrestricted re-use, distribution and reproduction, provided the original article is properly cited.

A recent analysis of data from six pivotal clinical trials in patients with MDD showed vortioxetine 20 mg/day to be significantly more effective than vortioxetine 10 mg/day in terms of improvement in depressive symptoms assessed by the Montgomery–Åsberg Depression Rating Scale (MADRS).²⁶ Statistically significant and clinically meaningful improvement in depressive symptoms vs placebo was seen after 2 weeks of treatment in patients who received vortioxetine 20 mg/day; however, this was not achieved until week 4 in those who received vortioxetine 10 mg/day. This is particularly noteworthy given that patients randomized to vortioxetine 20 mg/day received the recommended starting dosage of 10 mg/day for the first week of treatment.^{31,32} After 8 weeks of treatment, the mean change in MADRS total score from baseline was significantly greater in patients treated with vortioxetine 20 mg/day compared with vortioxetine 10 mg/day (difference between groups, -1.03 points; $P < .05$).²⁶ A difference between active treatments of at least 1 point on the MADRS is considered to be clinically significant.³³ Importantly, vortioxetine was found to be well tolerated across the approved dosage range, with no clinically relevant differences in tolerability observed between vortioxetine 20 and 10 mg/day over the 7 weeks of follow-up after vortioxetine dose up-titration from 10 to 20 mg/day.²⁶

This analysis was undertaken to further explore the clinical relevance of the greater and more rapid improvement in depressive symptoms previously seen with vortioxetine 20 vs 10 mg/day,²⁶ with particular focus on differences in the proportions of patients who achieved symptomatic response and remission and the time-points at which these outcomes were observed. Differences in the proportions of patients achieving sustained symptomatic response (i.e., response that was sustained from the specified time-point until the end of study follow-up) were also assessed. The analysis additionally considered potential vortioxetine dose effects with regard to improvement in symptoms of anxiety and overall patient functioning. The tolerability of vortioxetine 20 mg/day vs vortioxetine 10 mg/day was further assessed; specifically, the incidence of adverse events occurring during the first week of treatment, when patients randomized to receive vortioxetine 20 mg/day received the starting dose of vortioxetine 10 mg/day, compared with that during the second week of treatment immediately following vortioxetine dose up-titration in the 20 mg/day group. The incidence of adverse events related to sexual dysfunction was also analyzed.

Methods

Studies

This was an analysis of data pooled from the six short-term (8-week), randomized, double-blind, placebo-controlled, fixed-dose studies of vortioxetine in adult patients with MDD conducted by H. Lundbeck A/S and Takeda Pharmaceuticals America, Inc., that included vortioxetine 20 mg/day and used the MADRS for assessment of depressive symptoms: NCT01140906,³⁴ NCT01153009,³⁵ NCT01163266,³⁶ NCT01422213,³⁷ NCT01255787,³⁸ and NCT02389816.²⁴ In all studies, patients randomized to vortioxetine 20 mg/day received 10 mg/day for the first week of treatment, before up-titration to their randomized dosage for the remaining 7 weeks.

Key study inclusion criteria were as follows: diagnosis of MDD according to the *Diagnostic and Statistical Manual of Mental Disorders* (DSM) criteria at the time that the study was undertaken (DSM 4th Edition, Text Revision, or DSM 5th Edition); current major depressive episode of at least 3 months' duration (confirmed

using the Mini International Neuropsychiatric Interview); MADRS total score of at least 26 points (i.e., at least moderately severe depression); and Clinical Global Impression Scale-Severity of Illness score of at least 4 points (i.e., at least moderately ill) at the screening and baseline visits. Patients who exhibited anxiety symptoms were allowed to participate in these studies; however, those who fulfilled DSM diagnostic criteria for a concomitant anxiety disorder were excluded.

Patients were assessed at baseline and at regular study visits (weeks 1, 2, 4, 6, and 8). In all studies, severity of depression was assessed using the MADRS. Anxiety symptoms were assessed using the Hamilton Rating Scale for Anxiety (HAM-A) in four of the studies,^{34–36,38} and patient functioning was assessed using the Sheehan Disability Scale (SDS) in four studies.^{24,34,36,38}

All studies were conducted in accordance with the Declaration of Helsinki and Good Clinical Practice guidelines, and were approved by the relevant research ethics committees. Patients provided written informed consent for participation.

Statistical analysis

For each endpoint, efficacy analyses were performed using data from all randomized patients who received at least one dose of study medication and had at least one valid post-baseline efficacy assessment (full analysis set). Given the well-established dose-response relationship for vortioxetine across the approved dose range of 5–20 mg/day, this analysis specifically investigated differences between vortioxetine 20 and 10 mg/day; the lower number of patients who received vortioxetine 5 and 15 mg/day precluded assessment of the outcomes of interest in those dose groups.

The proportions of patients achieving response, sustained response, and remission, as assessed by MADRS total score at weeks 2, 4, 6, and 8, were compared between treatment groups using a logistic regression model with the relevant baseline score as a covariate. Response was defined as $\geq 50\%$ decrease in MADRS total score from baseline and remission as MADRS total score ≤ 10 points, and a last observation-carried forward approach was used for patients who did not complete the study.

A patient was considered to be a “sustained responder” from a specific visit if they had achieved a $\geq 50\%$ decrease in MADRS total score from baseline for the first time at the specified visit and at the last observed time-point (with only one intermediate visit allowed to show non-response) (Supplementary Table S1). To be eligible for assessment of sustained response from a specific time-point (e.g., week 2 or 4) onward, patients had to have MADRS data for both the specific time-point and at least one later visit. Patients found to be sustained responders from a specific time-point did not contribute to later time-point analyses (e.g., a patient who met the criteria for sustained response from week 2 could not also be considered a sustained responder from week 4 or 6). Patients who met the criteria for response from any time-point in addition to their last observed time-point were classed as “general sustained responders.” Kaplan–Meier curves of time to MADRS response were generated, with between-group comparisons based on a Cox regression model log-rank test.

Changes in HAM-A and SDS total scores from baseline over time were analyzed using an individual patient data meta-analytic statistical approach. This approach was chosen in order to provide granular results per week based on a unified statistical model. A mixed model for repeated measures was used, with terms for baseline values, study, visit, and treatment for the mean structure, and was applied using a completely unstructured covariance matrix.

Safety was analyzed for all eligible patients who received at least one dose of study medication (all patients treated set). Treatment-emergent adverse events (TEAEs) occurring in at least 2% of patients in any study group were summarized using Medical Dictionary for Regulatory Affairs (MedDRA Version 14.1) preferred terms. TEAEs are reported by randomized treatment group and time of onset: (i) onset before day 8 (i.e., during the first week of treatment when patients randomized to vortioxetine 20 mg/day were receiving the starting dose of 10 mg/day); and (ii) onset between day 8 and day 15 (i.e., during the second week of treatment, immediately following dose up-titration in the vortioxetine 20 mg/day group). The incidence of TEAEs specifically related to sexual dysfunction was assessed over the 8-week, double-blind treatment period. TEAEs related to sexual dysfunction were identified using a list of predefined MedDRA preferred terms (Supplementary Material S2).

Analyses were performed using SAS statistical software (version 9.4; SAS Institute Inc., Cary, NC, USA), with significance set at $P < .05$.

Results

Patients

A total of 2620 patients were included in the all patients treated set (975 in the vortioxetine 20 mg/day group, 663 in the vortioxetine 10 mg/day group, and 982 in the placebo group). Of these, 2594 patients had data for MADRS total score at baseline and at least one later assessment time-point and were included in the full analysis set. Treatment groups were well matched in terms of demographic and clinical characteristics at baseline (Table 1).

Efficacy

A clear dose–response relationship was observed for vortioxetine 20 mg/day vs vortioxetine 10 mg/day in terms of the proportion of patients achieving symptomatic response, sustained response, and remission over the 8 weeks of treatment (Figure 1). As shown, statistically significant differences were observed for vortioxetine 20 mg/day vs placebo from week 2 onward for the proportion of patients achieving MADRS response and sustained response and from week 4 onward for remission.

Table 1. Summary of Demographic and Clinical Characteristics at Baseline in Short-Term, Randomized, Placebo-Controlled, Fixed-Dose Studies of Vortioxetine in Patients with Major Depressive Disorder (Full Analysis Set)

	Placebo (n = 971)	VOR 10 mg/day (n = 660)	VOR 20 mg/day (n = 963)
Female, %	63.7	62.7	63.2
Age, years	43.6 ± 12.2	43.6 ± 11.7	43.9 ± 12.4
MADRS total score	31.4 ± 3.8	31.6 ± 4.0	31.6 ± 3.9
HAM-A total score ^a	18.5 ± 6.2	18.7 ± 6.0	18.9 ± 6.1
SDS total score ^b	17.7 ± 6.4	16.9 ± 6.4	18.2 ± 5.9

Note. All values are mean ± standard deviation unless otherwise indicated.

Abbreviations: HAM-A, Hamilton Rating Scale for Anxiety; MADRS, Montgomery–Åsberg Depression Rating Scale; SDS, Sheehan Disability Scale; VOR, vortioxetine.

^aNumber of randomized patients who received at least one dose of study medication and who had at least one post-baseline efficacy assessment for HAM-A total score was 533, 256, and 490 in the placebo, vortioxetine 10 mg/day, and vortioxetine 20 mg/day groups, respectively.

^bNumber of randomized patients who received at least one dose of study medication and who had at least one post-baseline efficacy assessment for SDS total score was 507, 344, and 491 in the placebo, vortioxetine 10 mg/day, and vortioxetine 20 mg/day groups, respectively.

However, significant differences in the proportion of patients achieving MADRS response, sustained response and remission were only observed from week 6 for vortioxetine 10 mg/day vs placebo.

The proportion of patients who achieved MADRS response was 12.5% in the vortioxetine 20 mg/day group vs 10.5% in the vortioxetine 10 mg/day group at week 2 and was significantly greater in the vortioxetine 20 mg/day group than in the vortioxetine 10 mg/day group at week 4 (26.8% vs 21.9%, respectively; odds ratio [OR], 1.32 [95% confidence interval [CI]: 1.03, 1.52]; $P = .0241$). After 8 weeks of treatment, the proportion of patients who had achieved MADRS response was 51.4% in the vortioxetine 20 mg/day group, 46.0% in the vortioxetine 10 mg/day group, and 34.0% in the placebo group ($P < .0001$ for both vortioxetine groups vs placebo). The proportion of patients with MADRS response at week 8 was significantly higher for vortioxetine 20 mg/day vs vortioxetine 10 mg/day (OR, 1.25 [95% CI: 1.02, 1.52]; $P = .0313$).

Sustained symptomatic response from week 2 was achieved by 10.2% of patients in the vortioxetine 20 mg/day group compared with 7.8% in the vortioxetine 10 mg/day group (OR, 1.34 [95% CI: 0.88, 2.06]; $P = .1760$). The proportion of patients who achieved sustained symptomatic response from week 4 was significantly greater in the vortioxetine 20 mg/day group than in the vortioxetine 10 mg/day group (26.0% vs 19.1%, respectively; OR, 1.49 [95% CI: 1.15, 1.92]; $P = .0025$). A general sustained response (i.e., MADRS response from any time-point in addition to the patient's last observed time-point) was also achieved by a significantly greater proportion of patients in the vortioxetine 20 mg/day group vs the vortioxetine 10 mg/day group (36.0% vs 29.8%, respectively; OR, 1.33 [95% CI: 1.07, 1.65]; $P = .0103$).

The proportion of patients meeting the criteria for MADRS remission at week 8 was 32.0% in the vortioxetine 20 mg/day group, 28.2% in the vortioxetine 10 mg/day group, and 20.6% in the placebo group ($P < .0001$ and $P = .0003$ vs placebo, respectively) (OR for vortioxetine 20 mg/day vs vortioxetine 10 mg/day, 1.20 [95% CI: 0.97, 1.49]; $P = .0927$).

Results of the Kaplan–Meier analysis of time to MADRS response are shown in Figure 2. The median time to symptomatic response was significantly shorter in the vortioxetine 20 mg/day group than in the vortioxetine 10 mg/day group (hazard ratio [HR], 1.18 [95% CI: 1.03, 1.35]; $P = .0161$) and placebo group (HR, 1.49 [95% CI: 1.31, 1.70]; $P < .0001$).

Regarding symptoms of anxiety, statistically significant differences in mean change in HAM-A total score from baseline were seen with vortioxetine 20 mg/day vs placebo from week 4 onward ($P = .001$ at week 4 and $P < .0001$ at weeks 6 and 8) (Figure 3A). For vortioxetine 10 mg/day, statistically significant differences in mean change in HAM-A total score from baseline vs placebo were only seen at weeks 6 and 8 (both $P < .05$). Mean (95% CI) difference in change from baseline in HAM-A total score at week 8 vs placebo was -1.9 ($-2.6, -1.1$) points for vortioxetine 20 mg/day ($P < .0001$) and -1.0 ($-1.9, 0.0$) points for vortioxetine 10 mg/day ($P = .0490$) (Table 2).

Statistically significant differences in mean change in SDS total score from baseline vs placebo were seen at weeks 6 and 8 for both vortioxetine 20 mg/day and vortioxetine 10 mg/day ($P < .0001$ and $P \leq .0009$, respectively) (Figure 3B). The mean (95% CI) difference in change from baseline in SDS total score at week 8 vs placebo was -1.8 ($-2.6, -1.0$) points for vortioxetine 20 mg/day ($P < .0001$) and -1.7 ($-2.6, -0.7$) points for vortioxetine 10 mg/day ($P = .0005$) (Table 2).

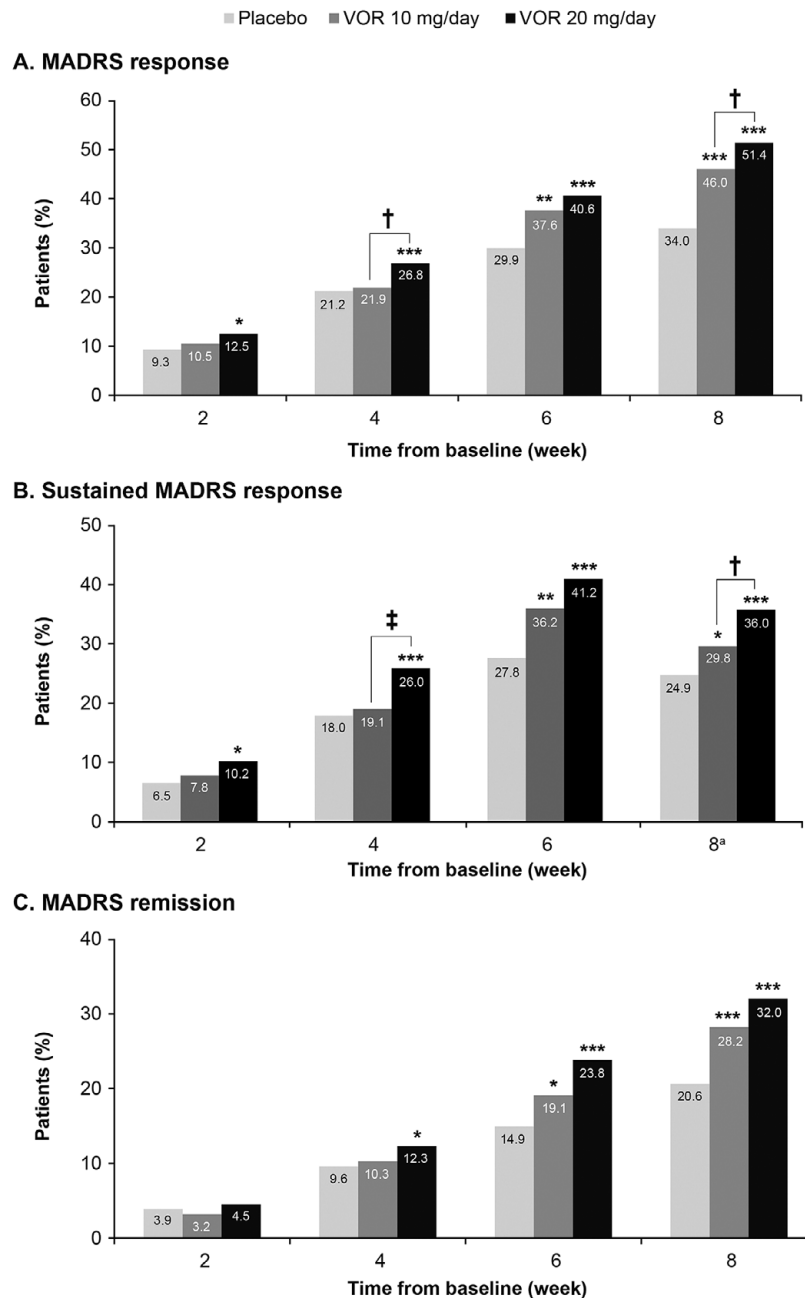


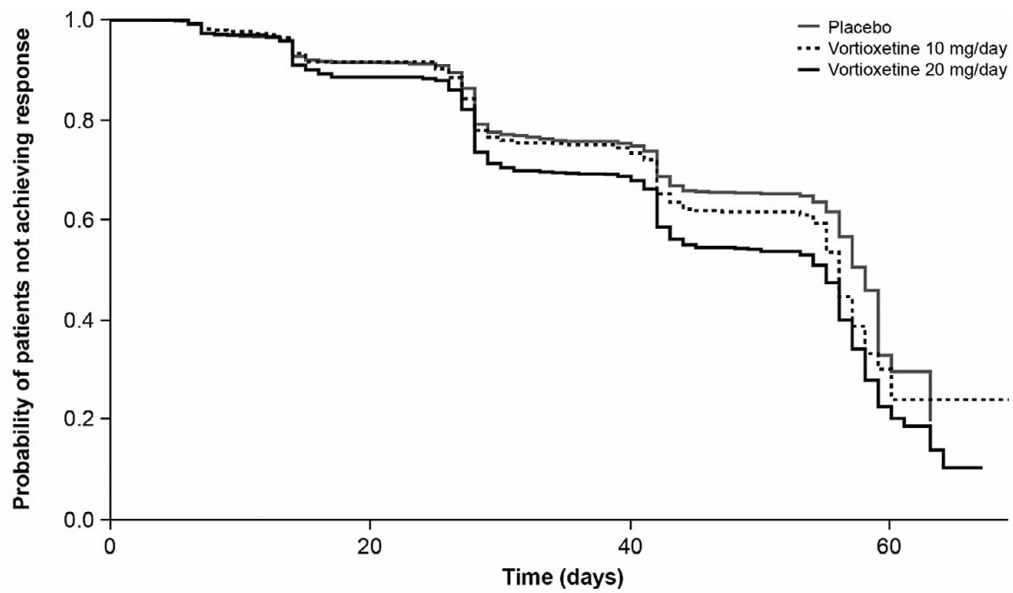
Figure 1. Proportion of patients with major depressive disorder achieving (A) response ($\geq 50\%$ decrease in Montgomery-Åsberg Depression Rating Scale [MADRS] total score from baseline); (B) sustained response (i.e., MADRS response at the given time-point and at the last observed time-point); and (C) remission (MADRS total score ≤ 10). Analysis of pooled data from short-term, randomized, placebo-controlled, fixed-dose studies of vortioxetine (VOR) in patients with major depressive disorder. Logistic regression with relevant baseline score as a covariate; *P*-values calculated by Wald's test (full analysis set, last observation carried forward). **P* < .05, ***P* < .01, and ****P* < .001 for vortioxetine 20 or 10 mg/day vs placebo. †*P* < .05 and ‡*P* < .01 for vortioxetine 20 mg/day vs vortioxetine 10 mg/day. ^aProportion of patients achieving general sustained response, that is, MADRS response from any time-point in addition to their last observed time-point.

Safety and tolerability

Irrespective of vortioxetine dosage and the time of TEAE onset, the most commonly reported TEAEs in vortioxetine-treated patients were nausea and headache (Table 3). During the first week of treatment (i.e., before dose up-titration in the vortioxetine 20 mg/day group), the incidence of nausea was 17.9%, 13.3%, and 4.4% in patients randomized to vortioxetine 20 mg/day, vortioxetine 10 mg/day, and placebo, respectively. During the second week of treatment, nausea was reported by 4.4% and 3.0% of patients in the vortioxetine 20 mg/day and 10 mg/day groups,

respectively, and by 0.6% of patients in the placebo group. The incidence of headache during the first week of treatment was 5.7% for vortioxetine 20 mg/day, 4.8% for vortioxetine 10 mg/day, and 4.9% for placebo. Respective incidences of headache during the second week of treatment were 2.3%, 1.8%, and 1.1%.

The incidence of TEAEs leading to withdrawal with onset during the first week of treatment was 3.4% in the vortioxetine 20 mg/day group, 2.3% in the vortioxetine 10 mg/day group, and 1.1% in the placebo group. The most common TEAEs with onset during the first week of treatment that led to withdrawal from treatment in more



Patients at risk

Placebo	971	852	650	10
Vortioxetine 10 mg/day	659	572	447	15
Vortioxetine 20 mg/day	961	792	583	20

Figure 2. Kaplan–Meier estimate of time to symptomatic response (i.e., $\geq 50\%$ decrease in Montgomery–Åsberg Depression Rating Scale total score from baseline) in patients with major depressive disorder treated with vortioxetine 20 mg/day, vortioxetine 10 mg/day, or placebo. Analysis of pooled data from short-term, randomized, placebo-controlled, fixed-dose studies of vortioxetine in patients with major depressive disorder (full analysis set).

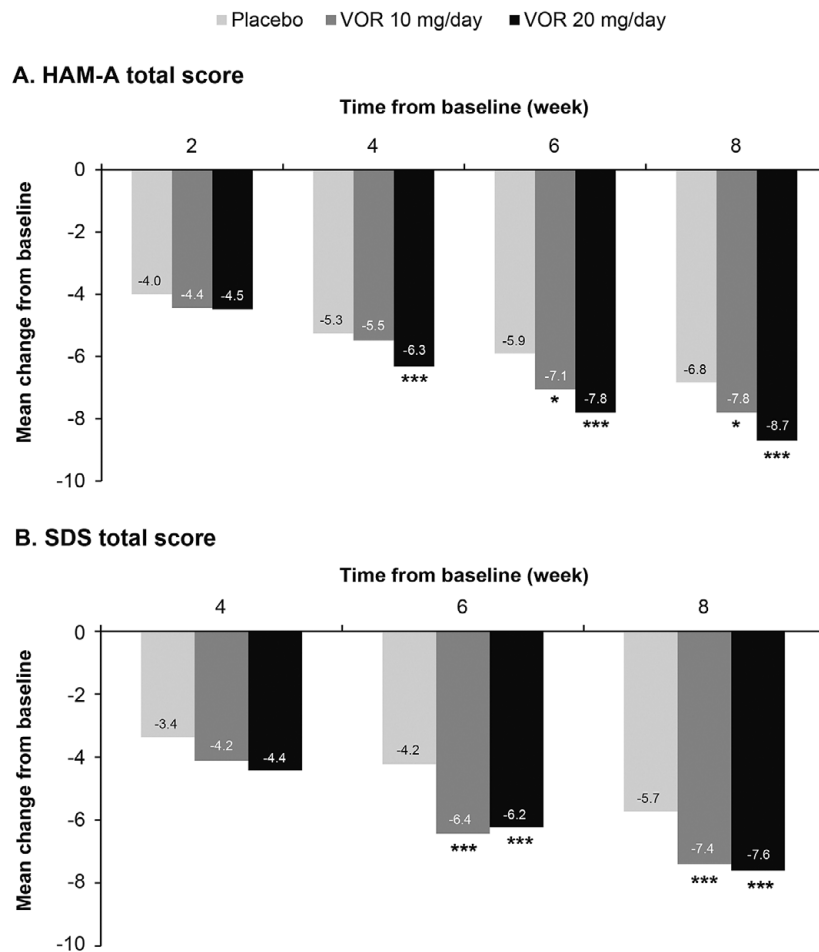


Figure 3. Mean change from baseline in (A) Hamilton Rating Scale for Anxiety (HAM-A) total score and (B) Sheehan Disability Scale (SDS) total score. Analysis of pooled data from short-term, randomized, placebo-controlled, fixed-dose studies of vortioxetine (VOR) in patients with major depressive disorder (full analysis set, mixed model for repeated measures). * $P < .05$ vs placebo; ** $P < .01$ vs placebo; *** $P \leq .001$ vs placebo.

Table 2. Meta-Analysis of Difference in Change from Baseline to Week 8 in HAM-A Total Score and SDS Total Score vs Placebo in Short-Term, Randomized, Placebo-Controlled, Fixed-Dose Studies of Vortioxetine in Patients with Major Depressive Disorder (Full Analysis Set, Mixed Model for Repeated Measures)

Outcome	Treatment and dosage	N ^a	Mean (SE) change from baseline	Difference vs PBO	SE	95% CI	P-value ^b
HAM-A total score	PBO	533	-6.8 (0.27)	-	-	-	-
	VOR 10 mg/day	256	-7.8 (0.41)	-1.0	0.49	-1.9, 0.0	.0490
	VOR 20 mg/day	490	-8.7 (0.28)	-1.9	0.39	-2.6, -1.1	< .0001
SDS total score	PBO	507	-5.7 (0.29)	-	-	-	-
	VOR 10 mg/day	344	-7.4 (0.39)	-1.7	0.48	-2.6, -0.7	.0005
	VOR 20 mg/day	491	-7.6 (0.30)	-1.8	0.41	-2.6, -1.0	< .0001

Abbreviations: CI, confidence interval; HAM-A, Hamilton Rating Scale for Anxiety; PBO, placebo; SDS, Sheehan Disability Scale; SE, standard error; VOR, vortioxetine.

^aNumber of randomized patients who received at least one dose of study medication and who had at least one post-baseline efficacy assessment (full analysis set).

^bBold indicates statistically significant P-values.

Table 3. TEAEs by Medical Dictionary for Regulatory Affairs Preferred Terms with Incidence $\geq 2\%$ in at Least One Group in Short-Term, Randomized, Placebo-Controlled, Fixed-Dose Studies of Vortioxetine in Patients with Major Depressive Disorder According to Time of Onset: (i) Before Day 8 (i.e., When Patients in the Vortioxetine 20 mg/day Group Were Receiving the Starting Dose of 10 mg/day) and (ii) Between Days 8 and 15 (i.e., During the Week Following Dose Up-Titration in the Vortioxetine 20 mg/day Group) (All Patients Treated Set)

Time of onset	TEAE	Placebo (n = 982)	VOR 10 mg/day (n = 663)	VOR 20 mg/day (n = 975)
Before day 8	Any TEAE	244 (24.8)	217 (32.7)	380 (39.0)
	Nausea	43 (4.4)	88 (13.3)	175 (17.9)
	Headache	48 (4.9)	32 (4.8)	56 (5.7)
	Dizziness	17 (1.7)	16 (2.4)	35 (3.6)
	Diarrhea	14 (1.4)	17 (2.6)	29 (3.0)
	Dry mouth	21 (2.1)	13 (2.0)	26 (2.7)
	Somnolence	11 (1.1)	15 (2.3)	24 (2.5)
	Vomiting	1 (0.1)	14 (2.1)	22 (2.3)
	Any TEAE leading to withdrawal	11 (1.1)	15 (2.3)	33 (3.4)
Day 8–15	Any TEAE	149 (15.2)	113 (17.0)	177 (18.2)
	Nausea	6 (0.6)	20 (3.0)	43 (4.4)
	Headache	11 (1.1)	12 (1.8)	22 (2.3)
	Any TEAE leading to withdrawal	8 (0.8)	6 (0.9)	12 (1.2)

Note. All values are n (%).

Abbreviations: TEAE, treatment-emergent adverse event; VOR, vortioxetine.

than one patient in any group were nausea (18 [1.8%], three [0.5%], and two patients [0.2%] in the vortioxetine 20 mg/day, vortioxetine 10 mg/day, and placebo groups, respectively), headache (five [0.5%], three [0.5%], and three [0.3%] patients, respectively), and vomiting (five [0.5%], three [0.5%], and one patient [0.1%], respectively).

The incidence of TEAEs leading to withdrawal with onset during the second week of treatment was 1.2% in the vortioxetine 20 mg/day group, 0.9% in the vortioxetine 10 mg/day group, and 0.8% in the placebo group. The only TEAEs with onset during the second week of treatment that led to withdrawal from treatment in more than one patient in any group were nausea (six patients [0.6%] in the vortioxetine 20 mg/day group and two patients [0.3%] in the vortioxetine 10 mg/day group) and generalized pruritus (two patients [0.3%] in the vortioxetine 10 mg/day group).

The incidence of TEAEs related to sexual dysfunction (i.e., TEAEs by MedDRA preferred terms related to sexual dysfunction) over the 8-week, double-blind treatment period was low in all treatment groups (1.8% in the vortioxetine 20 mg/day group, 0.8% in the vortioxetine 10 mg/day group, and 1.0% in the placebo group). The only TEAEs related to sexual dysfunction reported by more than one patient in any group were: decreased libido

(reported by 10 patients in the vortioxetine 20 mg/day group and seven patients in the placebo group), abnormal orgasm (reported by three patients in the vortioxetine 20 mg/day group and two patients in both the vortioxetine 10 mg/day and placebo groups), delayed ejaculation (reported by two patients in the vortioxetine 20 mg/day group and one patient in the vortioxetine 10 mg/day group), and anorgasmia (reported by two patients in the vortioxetine 20 mg/day group).

Discussion

To our knowledge, this is the first study to assess the comparative efficacy of vortioxetine 20 and 10 mg/day for the achievement of sustained response in terms of reduction in depressive symptom severity in patients with MDD using data from pivotal randomized, placebo-controlled clinical trials. The results demonstrate that the significantly greater improvement in depressive symptoms vs placebo previously observed in patients with MDD after 2 weeks of treatment with vortioxetine 20 mg/day, but not vortioxetine 10 mg/day,²⁶ beneficially impacts on several clinically relevant

endpoints and confirm that dose up-titration to 20 mg/day after 1 week of treatment is well tolerated.

Compared with vortioxetine 10 mg/day, vortioxetine 20 mg/day (increased from 10 mg/day after 1 week of treatment) was associated with more rapid and greater achievement of symptomatic response, sustained response, and remission as assessed by MADRS total score. For vortioxetine 20 mg/day, significant differences vs placebo were observed from week 2 onward (i.e., from 1 week after up-titration from the starting dose of 10 mg/day) for achievement of symptomatic response and sustained symptomatic response, and from week 4 onward for rates of remission. In contrast, for vortioxetine 10 mg/day, significant differences in rates of response, sustained response, and remission vs placebo were only observed from week 6.

After 8 weeks of treatment, significantly more patients treated with vortioxetine 20 mg/day had achieved symptomatic response (i.e., $\geq 50\%$ decrease in MADRS total score from baseline) than those who had received vortioxetine 10 mg/day. Patients treated with vortioxetine 20 mg/day were also found to be significantly more likely than those who received vortioxetine 10 mg/day to achieve sustained symptomatic response (i.e., response that was sustained at the final study visit) from week 4. Patients treated with vortioxetine 20 mg/day were also significantly more likely to achieve symptomatic response that was sustained at at least one later study visit (i.e., a general sustained response). At the end of the 8-week treatment period, a numerically greater proportion of patients in the vortioxetine 20 mg/day group were in remission (i.e., MADRS total score ≤ 10 points) than in the vortioxetine 10 mg/day group. Our findings add to the evidence that early and sustained response to antidepressant treatment is associated with improved outcomes in patients with MDD.^{3,4,8-13}

In keeping with the results of previous analyses,^{20,28} earlier improvements in anxiety symptoms vs placebo were also achieved in patients treated with vortioxetine 20 mg/day than in those who received vortioxetine 10 mg/day. Of note, the observed dose-response relationship for vortioxetine in terms of improvement in anxiety appears more pronounced than that seen for improvement in depressive symptoms. For overall patient functioning, clinically significant improvement (i.e., increase in SDS total score ≥ 4 points³⁹) vs placebo was seen in both vortioxetine dose groups from week 4 onward.

Importantly, vortioxetine dose up-titration to 20 mg/day after the first week of treatment was not associated with a higher incidence of TEAEs or higher rates of withdrawal from therapy. As previously reported,⁴⁰ nausea was the most frequently reported adverse event reported in vortioxetine-treated patients; however, this appeared to be transient, occurring more frequently during the first week of treatment and at a lower and similar incidence during the second week of treatment in both vortioxetine dose groups. The incidence of sexual adverse events was also low and similar between the vortioxetine and placebo groups.

The broad and dose-dependent therapeutic effects of vortioxetine in patients with MDD are likely due to its multimodal mechanism of action. Vortioxetine acts as an inhibitor of the serotonin (5-HT) transporter as well as modulating the activity of several 5-HT receptor subtypes.⁴¹ Preclinical data show vortioxetine to be a 5-HT₃, 5-HT₇, and 5-HT_{1D} receptor antagonist, a 5-HT_{1B} receptor partial agonist, and a 5-HT_{1A} receptor agonist.⁴¹⁻⁴³ As such, vortioxetine directly and indirectly modulates neurotransmission across multiple systems relevant to the pathophysiology of depression.⁴¹ Notably, the affinity of vortioxetine has been shown to vary between 5-HT receptor types (5-HT₃ > 5-HT_{1B} > 5-HT_{1A} \approx 5-HT₇), resulting

in their dose-dependent recruitment.⁴² Occupancy of the 5-HT transporter has also been shown to be related to vortioxetine dosage, ranging from $\sim 50\%$ for vortioxetine 5 mg to $\sim 65\%$ for vortioxetine 10 mg, and $>80\%$ for vortioxetine 20 mg in healthy individuals.⁴⁴ For the treatment of MDD, 5-HT transporter occupancy of $\geq 80\%$ is considered optimal.^{45,46}

The transient nausea that may occur in some patients when initiating treatment with vortioxetine is likely due to its effects on 5-HT₃ receptors. Vortioxetine binds at the orthosteric binding site of 5-HT_{3A} receptors, but its mechanism of action differs from that of other 5-HT₃ antagonists, inducing an initial partial agonistic response before persistent and insurmountable inhibition of receptor function.^{42,47,48} We hypothesize that the transient initial partial agonistic activity of vortioxetine at 5-HT₃ receptors may contribute to nausea and vomiting in patients who experience these adverse effects and that the timing of the shift from partial agonistic to 5-HT₃ functional antagonist activity—likely due to receptor down-regulation or desensitization—differs between patients.

In the experience of the authors who are in clinical practice, patients who do not experience nausea or vomiting at the starting dose of vortioxetine 10 mg/day are highly unlikely to develop these adverse events following dose up-titration. In patients who do experience nausea and vomiting following treatment initiation, vortioxetine dose up-titration is better tolerated if delayed until these initial adverse events have subsided. However, in the majority of patients (i.e., those that do not experience nausea or vomiting following treatment initiation or in whom these adverse events resolve quickly), vortioxetine dosage can be increased early in the course of treatment (i.e., from week 1 onward) in order to achieve more rapid response, without an increased risk of adverse events.

The unique mechanism of action of vortioxetine may also account for the low incidence of adverse events related to sexual dysfunction. It is likely that sexual dysfunction during treatment with selective serotonin reuptake inhibitors is mediated by increased levels of 5-HT following transporter inhibition.⁴⁹ Preclinical data suggest that the agonistic effects of vortioxetine on 5-HT_{1A} receptors counteract any adverse effect on sexual function that may arise from 5-HT transporter inhibition, thus reducing the potential for associated adverse events.⁵⁰

A potential study limitation is that patients treated with vortioxetine 20 mg/day did not initiate treatment at this dosage, but received the recommended starting dose of 10 mg/day for the first week of treatment.^{31,32} It is possible that differences between the two groups may have been more marked if assessed 2 weeks after vortioxetine dose up-titration.

Conclusion

In summary, vortioxetine 20 mg/day is associated with more rapid symptomatic improvement in patients with MDD compared with vortioxetine 10 mg/day, resulting in earlier and higher rates of response, sustained response, and remission over 8 weeks of treatment. Of note, the proportion of patients who achieved symptomatic response was significantly higher in the vortioxetine 20 mg/day group than in the vortioxetine 10 mg/day group at weeks 4 and 8. Significantly more patients treated with vortioxetine 20 mg/day also achieved sustained symptomatic response from week 4 compared with patients treated with vortioxetine 10 mg/day. These findings and the favorable tolerability profile demonstrated in the

present analysis suggest that, according to individual patient response and tolerability, 20 mg/day should be considered the optimal vortioxetine dosage in patients with MDD.

Supplementary material. The supplementary material for this article can be found at <https://doi.org/10.1017/S1092852923002249>.

Acknowledgments. Under the direction of the authors, medical writing assistance was provided by Jennifer Coward for Piper Medical Communications, funded by H. Lundbeck A/S.

Author contributions. All authors contributed to the conceptualization and interpretation of the analyses, contributed to the scientific content of the manuscript, and approved the final version of the manuscript for submission. Henrik Loft performed the statistical analyses. Employees from Lundbeck were involved in the concept of the manuscript, as well as the data analysis and interpretation of the results.

Financial support. The data reported in this paper were derived from clinical studies sponsored by H. Lundbeck A/S, Valby, Denmark, and Takeda Pharmaceuticals Inc., Deerfield, Illinois, USA. The analyses reported in this paper were funded by H. Lundbeck A/S, Valby, Denmark.

Competing interests. Drs. Christensen, Adair, Florea, and Loft are employees of H. Lundbeck A/S. Dr. McIntyre has received: research grant support from CIHR/GACD/National Natural Science Foundation of China (NSFC) and the Milken Institute; speaker/consultation fees from Lundbeck, Janssen, Alkermes, Neumora Therapeutics, Boehringer Ingelheim, Sage, Biogen, Mitsubishi Tanabe, Purdue, Otsuka, Takeda, Neurocrine, Sunovion, Bausch Health, Axsome, Novo Nordisk, Kris, Sanofi, Eisai, Intra-Cellular, NewBridge Pharmaceuticals, AbbVie, Atai Life Sciences; and is a CEO of Braxia Scientific Corp. Dr. Fagiolini has been a consultant and/or speaker and/or has received research grants from Allergan, Angelini, Apsen, Boehringer Ingelheim, Daiichi Sankyo Brasil Farmacêutica, DOC Generici, FB-Health, Italfarmaco, Janssen, Lundbeck, Mylan, Otsuka, Pfizer, Recordati, Sanofi Aventis, Sunovion, and Vifor Pharma.

References

- Okuda A, Suzuki T, Kishi T, et al. Duration of untreated illness and antidepressant fluvoxamine response in major depressive disorder. *Psychiatry Clin Neurosci.* 2010;**64**(3):268–273.
- Bukh JD, Bock C, Vinberg M, Kessing LV. The effect of prolonged duration of untreated depression on antidepressant treatment outcome. *J Affect Disord.* 2013;**145**(1):42–48.
- Habert J, Katzman MA, Oluboka OJ, et al. Functional recovery in major depressive disorder: focus on early optimized treatment. *Prim Care Companion CNS Disord.* 2016;**18**(5):e1–e11. doi:10.4088/PCC.15r01926.
- Oluboka OJ, Katzman MA, Habert J, et al. Functional recovery in major depressive disorder: providing early optimal treatment for the individual patient. *Int J Neuropsychopharmacol.* 2018;**21**(2):128–144.
- Cleare A, Pariante CM, Young AH, et al. Members of the consensus meeting. Evidence-based guidelines for treating depressive disorders with antidepressants: a revision of the 2008 British Association for Psychopharmacology guidelines. *J Psychopharmacol.* 2015;**29**(5):459–525.
- Kennedy SH, Lam RW, McIntyre RS, et al. Canadian Network for Mood and Anxiety Treatments (CANMAT) 2016 clinical guidelines for the management of adults with major depressive disorder: Section 3. Pharmacological treatments. *Can J Psychiatry.* 2016;**61**(9):540–560.
- Bauer M, Severus E, Möller HJ, Young AH, WFSBP Task Force on Unipolar Depressive Disorders. Pharmacological treatment of unipolar depressive disorders: summary of WFSBP guidelines. *Int J Psychiatry Clin Pract.* 2017;**21**(3):166–176.
- Henkel V, Seemüller F, Obermeier M, et al. Does early improvement triggered by antidepressants predict response/remission? Analysis of data from a naturalistic study on a large sample of inpatients with major depression. *J Affect Disord.* 2009;**115**(3):439–449.
- Szegedi A, Jansen WT, van Willigenburg AP, et al. Early improvement in the first 2 weeks as a predictor of treatment outcome in patients with major depressive disorder: a meta-analysis including 6562 patients. *J Clin Psychiatry.* 2009;**70**(3):344–353.
- Ciudad A, Álvarez E, Roca M, et al. Early response and remission as predictors of a good outcome of a major depressive episode at 12-month follow-up: a prospective, longitudinal, observational study. *J Clin Psychiatry.* 2012;**73**(2):185–191.
- Lam RW. Onset, time course and trajectories of improvement with antidepressants. *Eur Neuropsychopharmacol.* 2012;**22**(Suppl 3):S492–S498.
- Wagner S, Engel A, Engelmann J, et al. Early improvement as a resilience signal predicting later remission to antidepressant treatment in patients with major depressive disorder: systematic review and meta-analysis. *J Psychiatr Res.* 2017;**94**:96–106.
- Inoue T, Fujimoto S, Marumoto T, et al. Early improvement with vortioxetine predicts response and remission: a post hoc analysis of data from a clinical trial conducted in Japan. *Neuropsychiatr Dis Treat.* 2021;**17**:3735–3741.
- Stassen HH, Angst J, Hell D, Scharfetter C, Szegedi A. Is there a common resilience mechanism underlying antidepressant drug response? Evidence from 2848 patients. *J Clin Psychiatry.* 2007;**68**(8):1195–1205.
- Judd LL, Akiskal HS, Maser JD, et al. Major depressive disorder: a prospective study of residual subthreshold depressive symptoms as predictor of rapid relapse. *J Affect Disord.* 1998;**50**(2–3):97–108.
- Judd LL, Schettler PJ, Rush AJ, Coryell WH, Fiedorowicz JG, Solomon DA. A new empirical definition of major depressive episode recovery and its positive impact on future course of illness. *J Clin Psychiatry.* 2016;**77**(8):1065–1073.
- Ishak WW, Greenberg JM, Cohen RM. Predicting relapse in major depressive disorder using patient-reported outcomes of depressive symptom severity, functioning, and quality of life in the Individual Burden of Illness Index for Depression (IBI-D). *J Affect Disord.* 2013;**151**(1):59–65.
- Gonda X, Sharma SR, Tarazi FI. Vortioxetine: a novel antidepressant for the treatment of major depressive disorder. *Expert Opin Drug Discov.* 2019;**14**(1):81–89.
- de Diego-Adelino J, Crespo JM, Mora F, et al. Vortioxetine in major depressive disorder: from mechanisms of action to clinical studies. An updated review. *Expert Opin Drug Saf.* 2022;**21**(5):673–690.
- Baldwin DS, Florea I, Jacobsen PL, Zhong W, Nomikos GG. A meta-analysis of the efficacy of vortioxetine in patients with major depressive disorder (MDD) and high levels of anxiety symptoms. *J Affect Disord.* 2016;**206**:140–150.
- Thase ME, Mahableshwarkar AR, Dragheim M, Loft H, Vieta E. A meta-analysis of randomized, placebo-controlled trials of vortioxetine for the treatment of major depressive disorder in adults. *Eur Neuropsychopharmacol.* 2016;**26**(6):979–993.
- Florea I, Loft H, Danchenko N, et al. The effect of vortioxetine on overall patient functioning in patients with major depressive disorder. *Brain Behav.* 2017;**7**(3):e00622.
- Christensen MC, Florea I, Lindsten A, Baldwin DS. Efficacy of vortioxetine on the physical symptoms of major depressive disorder. *J Psychopharmacol.* 2018;**32**(10):1086–1097.
- Inoue T, Sasai K, Kitagawa T, Nishimura A, Inada I. Randomized, double-blind, placebo-controlled study to assess the efficacy and safety of vortioxetine in Japanese patients with major depressive disorder. *Psychiatry Clin Neurosci.* 2020;**74**(2):140–148.
- McIntyre RS, Loft H, Christensen MC. Efficacy of vortioxetine on anhedonia: results from a pooled analysis of short-term studies in patients with major depressive disorder. *Neuropsychiatr Dis Treat.* 2021;**17**:575–585.
- Christensen MC, McIntyre RS, Florea I, Loft H, Fagiolini A. Vortioxetine 20 mg/day in patients with major depressive disorder: updated analysis of efficacy, safety, and optimal timing of dose adjustment. *CNS Spectr.* 2023;**28**(1):90–97.
- Iovieno N, Papakostas GI, Feeney A, et al. Vortioxetine versus placebo for major depressive disorder: a comprehensive analysis of the clinical trial dataset. *J Clin Psychiatry.* 2021;**82**(4):20r13682.

28. Adair M, Christensen MC, Florea I, Loft H, Fagiolini A. Vortioxetine in patients with major depressive disorder and high levels of anxiety symptoms: an updated analysis of efficacy and tolerability. *J Affect Disord.* 2023; **328**:345–354.
29. De Carlo V, Vismara M, Grancini B, et al. Effectiveness, tolerability, and dropout rates of vortioxetine in comorbid depression: a naturalistic study. *Hum Psychopharmacol.* 2020; **35**(5):e2750.
30. Papalexi E, Galanopoulos A, Kontis D, et al. Real-world effectiveness of vortioxetine in outpatients with major depressive disorder: functioning and dose effects. *BMC Psychiatry.* 2022; **22**(1):548.
31. H. Lundbeck A/S Brintellix (vortioxetine): summary of product characteristics. https://www.ema.europa.eu/en/documents/product-information/brintellix-epar-product-information_en.pdf. Updated September 2021. Accessed March 30, 2023.
32. Takeda Pharmaceuticals America, Inc. Trintellix (vortioxetine): highlights of prescribing information. https://www.accessdata.fda.gov/drugsatfda_docs/label/2021/204447s021s022lbl.pdf. Updated January 2021. Accessed March 30, 2023.
33. Montgomery SA, Möller HJ. Is the significant superiority of escitalopram compared with other antidepressants clinically relevant? *Int Clin Psychopharmacol.* 2009; **24**(3):111–118.
34. Boulenger JP, Loft H, Olsen CK. Efficacy and safety of vortioxetine (Lu AA21004), 15 and 20 mg/day: a randomized, double-blind, placebo-controlled, duloxetine-referenced study in the acute treatment of adult patients with major depressive disorder. *Int Clin Psychopharmacol.* 2014; **29**(3):138–149.
35. Mahabeshwarkar AR, Jacobsen PL, Chen Y, Serenko M, Trivedi MH. A randomized, double-blind, duloxetine-referenced study comparing efficacy and tolerability of 2 fixed doses of vortioxetine in the acute treatment of adults with MDD. *Psychopharmacology (Berlin).* 2015; **232**(12):2061–2070.
36. Jacobsen PL, Mahabeshwarkar AR, Serenko M, Chan S, Trivedi MH. A randomized, double-blind, placebo-controlled study of the efficacy and safety of vortioxetine 10 mg and 20 mg in adults with major depressive disorder. *J Clin Psychiatry.* 2015; **76**(5):575–582.
37. McIntyre RS, Lophaven S, Olsen CK. A randomized, double-blind, placebo-controlled study of vortioxetine on cognitive function in depressed adults. *Int J Neuropsychopharmacol.* 2014; **17**(10):1557–1567.
38. Nishimura A, Aritomi Y, Sasai K, Kitagawa T, Mahabeshwarkar AR. Randomized, double-blind, placebo-controlled 8-week trial of the efficacy, safety, and tolerability of 5, 10, and 20 mg/day vortioxetine in adults with major depressive disorder. *Psychiatry Clin Neurosci.* 2018; **72**(2):64–72.
39. Sheehan KH, Sheehan DV. Assessing treatment effects in clinical trials with the discan metric of the Sheehan Disability Scale. *Int Clin Psychopharmacol.* 2008; **23**(2):70–83.
40. Baldwin DS, Chrones L, Florea I, et al. The safety and tolerability of vortioxetine: analysis of data from randomized placebo-controlled trials and open-label extension studies. *J Psychopharmacol.* 2016; **30**(3):242–252.
41. Sanchez C, Asin KE, Artigas F. Vortioxetine, a novel antidepressant with multimodal activity: review of preclinical and clinical data. *Pharmacol Ther.* 2015; **145**:43–57.
42. Bang-Andersen B, Ruhland T, Jorgensen M, et al. Discovery of 1-[2-(2,4-dimethylphenylsulfanyl)phenyl]piperazine (Lu AA21004): a novel multimodal compound for the treatment of major depressive disorder. *J Med Chem.* 2011; **54**(9):3206–3221.
43. Mørk A, Pehrson A, Brennum LT, et al. Pharmacological effects of Lu AA21004: a novel multimodal compound for the treatment of major depressive disorder. *J Pharmacol Exp Ther.* 2021; **340**(3):666–675.
44. Areberg J, Luntang-Jensen M, Sogaard B, Nilausen DØ. Occupancy of the serotonin transporter after administration of Lu AA21004 and its relation to plasma concentration in healthy subjects. *Basic Clin Pharmacol Toxicol.* 2012; **110**(4):401–404.
45. Meyer JH. Imaging the serotonin transporter during major depressive disorder and antidepressant treatment. *J Psychiatry Neurosci.* 2007; **32**(2):86–102.
46. Sørensen A, Ruhé HG, Munkholm K. The relationship between dose and serotonin transporter occupancy of antidepressants—a systematic review. *Mol Psychiatry.* 2022; **27**(1):192–201.
47. Dale E, Grunnet M, Pehrson AL, et al. The multimodal antidepressant vortioxetine may facilitate pyramidal cell firing by inhibition of 5-HT₃ receptor expressing interneurons: an in vitro study in rat hippocampus slices. *Brain Res.* 2018; **1689**:1–11.
48. Ladefoged LK, Munro L, Pedersen AJ, et al. Modeling and mutational analysis of the binding mode for the multimodal antidepressant drug vortioxetine to the human 5-HT_{3A} receptor. *Mol Pharmacol.* 2018; **94**(6):1421–1434.
49. Olivier JDA, Olivier B. Antidepressants and sexual dysfunctions: a translational perspective. *Curr Sex Health Rep.* 2019; **11**:156–166.
50. Li Y, Pehrson AL, Oosting RS, Gulino M, Olivier B, Sanchez C. A study of time- and sex-dependent effects of vortioxetine on rat sexual behavior: possible roles of direct receptor modulation. *Neuropharmacology.* 2017; **121**:89–99.