



TITLE:

Destruction of mesoscopic chemically modulated domains in single phase high entropy alloy via plastic deformation

AUTHOR(S):

Miyajima, Yoji; Nagata, Tomohiro; Takeda, Kohei; Yoshida, Shuhei; Yasuno, Satoshi; Watanabe, Chihiro; Kazuhiro, Ishikawa; Adachi, Hiroki; Tsuji, Nobuhiro

CITATION:

Miyajima, Yoji ...[et al]. Destruction of mesoscopic chemically modulated domains in single phase high entropy alloy via plastic deformation. Scientific Reports 2022, 12: 16776.

ISSUE DATE:

2022

URL:

<http://hdl.handle.net/2433/282056>

RIGHT:

© The Author(s) 2022; This article is licensed under a Creative Commons Attribution 4.0 International License, which permits use, sharing, adaptation, distribution and reproduction in any medium or format, as long as you give appropriate credit to the original author(s) and the source, provide a link to the Creative Commons licence, and indicate if changes were made. The images or other third party material in this article are included in the article's Creative Commons licence, unless indicated otherwise in a credit line to the material. If material is not included in the article's Creative Commons licence and your intended use is not permitted by statutory regulation or exceeds the permitted use, you will need to obtain permission directly from the copyright holder.

scientific reports



OPEN

Destruction of mesoscopic chemically modulated domains in single phase high entropy alloy via plastic deformation

 Yoji Miyajima^{1✉}, Tomohiro Nagata², Kohei Takeda², Shuhei Yoshida^{3,4}, Satoshi Yasuno⁵, Chihiro Watanabe¹, Ishikawa Kazuhiro¹, Hiroki Adachi⁶ & Nobuhiro Tsuji^{3,4}

Chemically modulated mesoscopic domains in a fcc single phase CrMnFeCoNi equi-atomic high entropy alloy (HEA) are detected by small angle diffraction performed at a synchrotron radiation facility, whereas the mesoscopic domains cannot be detected by conventional X-ray diffraction and 2D mappings of energy dispersive X-ray spectroscopy by scanning electron microscopy and scanning transmission electron microscopy. The mesoscopic domains are deformed and shrieked, and finally destructed by plastic deformation, which is supported by the comprehensive observations/measurements, such as electrical resistivity, Vickers hardness, electron backscattering diffraction, and hard X-ray photoemission spectroscopy. The destruction of the mesoscopic domains causes the decrease in electrical resistivity via plastic deformation, so called K-effect, which is completely opposite to the normal trend of metals. We confirmed that the presence and the size of local chemical ordering or short-range order domains in the single phased HEA, and furthermore, Cr and Mn are related to form the domains.

High entropy alloys and medium entropy alloys (HEAs/MEAs), of which difference are depending on their mixing entropy, are widely investigated for last decades due to their excellent mechanical properties, especially at high temperatures^{1,2}. Sometimes, conventional alloys bearing large fraction of alloying elements, such as Ni-based super alloys, were also treated as HEAs or MEAs. One of the reasons why HEAs have widely attracted researchers is the abnormal properties caused by the multi-element, so-called “cocktail effect”^{3,4}, since typical HEAs contain five or more elements. Whilst, conventional alloys consist of matrix and small fraction of alloying elements.

The physical properties of HEAs, such as electrical and magnetic properties, were also reported^{5–11}, but the number of the literature is limited. The electrical resistivity, ρ , of HEAs at room temperature (R.T.) is range between around $0.7 \text{ m}\mu\Omega$ and around $2.2 \text{ m}\mu\Omega$, which is similar to Ni–Cr alloy¹² known as a material for heating wires. Such high ρ was attributed to the distorted lattice of HEAs that scatters free electrons^{5,7}. Temperature coefficient of resistivity, the gradient of ρ - T curves, was lower than that for the conventional alloys. Compared with the conventional alloys, the density and mobility of carrier in the HEAs were comparable and lower, respectively^{6,7}. The HEAs can be either paramagnetic or ferromagnetic at room temperature, and the magnetic transformation below 100 K and the tuning of saturation magnetization were also reported^{6,7,11,13}. It was also pointed out that HEAs can be used as soft magnetic materials⁸.

Short range order (SRO) domains were observed by transmission electron microscopy (TEM) in MEAs¹⁴. A 3D atom probe also revealed the presence of local chemical ordering (LCO) with the order of around ten atomic distance, which is longer than SRO, in MEAs¹⁵. The high strength of HEAs/MEAs may be achieved via LCO/SRO strengthening effects^{16–18}. However, it was also reported that the effect of LCO/SRO on strength is limited/

¹Faculty of Mechanical Engineering, Institute of Science and Engineering, Kanazawa University, Kanazawa 920-1192, Japan. ²Division of Mechanical Science and Engineering, Graduate School of Natural Science and Technology, Kanazawa University, Kanazawa 920-1192, Japan. ³Department of Materials Science and Engineering, Kyoto University, Yoshida-honmachi, Sakyo-ku, Kyoto 606-8501, Japan. ⁴Elements Strategy Initiative for Structural Materials (ESISM), Kyoto University, Yoshida-honmachi, Sakyo-ku, Kyoto 606-8501, Japan. ⁵Industrial Application and Partnership Division, Japan Synchrotron Radiation Research Institute, 1-1-1 Kouto, Sayo, Hyogo 679-5198, Japan. ⁶Department of Materials and Synchrotron Radiation Engineering, Graduate School of Engineering, University of Hyogo, Himeji 671-2280, Japan. ✉email: yoji-miyajima@se.kanazawa-u.ac.jp

insignificant for HEAs/MEAs^{19,20}. Nevertheless, it is important to assess the presence of LCO/SRO in HEAs/MEAs apart from the controversial discussion of the effect of LCO/SRO.

On the other hand, there are less numbers of reports about the plastic deformed HEAs/MEAs^{21–23}. Lately, Mazur *et al.* carefully studied the change in ρ of a CrMnFeCoNi equi-atomic HEA, known as Cantor alloy²⁴, upon the plastic deformation, and the SRO related phenomena “K-state” sometimes called “K-effect” was observed⁹. Unfortunately, they conducted no microstructural observations in the literature, and thus, the change in the relationship between electrical properties and microstructure on plastic deformation has not been clarified yet. In the present study, the CrMnFeCoNi equi-atomic HEA was selected as a typical fcc-HEA, and changes in ρ and microstructure during cold rolling were systematically and precisely investigated. Furthermore, some techniques, such as small angle x-ray scattering (SAXS), ultra-small angle X-ray scattering (USAXS), and hard X-ray photoemission spectroscopy (HAXPES) were performed at a synchrotron radiation facility, to obtain information about domains and chemical bonding. The purpose of this study is to reveal the detail of LCO/SRO in CrMnFeCoNi equi-atomic HEA.

Experimental results

Microstructure of materials. No precipitates and segregations in the rolling reception r of 0% (undeformed sample) were detected by 2D mapping of the energy dispersive spectroscopy (EDS) performed with scanning electron microscopy (SEM) and scanning transmission electron microscopy (STEM). Figure 1 shows the inverse pole figure (IPF) maps of planes normal to the transverse direction (TD) of the HEA with r between 0 and 90%. At $r = 0\%$ (Fig. 1a), typical recrystallized microstructure having some annealing twins can be seen. The deformation of grains can be recognised since the colour of the grains has gradations at $r = 20\%$ (Fig. 1b). Also, thin deformation twins shown by the black arrows can also be seen in some grains. On the further cold-rolling, grains were much deformed severely, and a high density of deformation twins can be observed at $r = 40\%$ (Fig. 1c), compared with $r = 20\%$. At this stage, the initial equiaxed grains are elongated along rolling direction (RD). At $r = 60\%$ (Fig. 1d), some regions contain considerably higher density of either deformation twins or shear bands, but some other regions still have a lower density of deformation twins/shear bands. It is noted that the shear bands were observed on the heavily deformed equiatomic CoCrFeMnNi HEA by cold rolling²¹. It is attributed to the difference of initial orientation of grains, even at the intermediate stage of cold-rolling. At the later stages at $r = 80\%$ and 90% (Fig. 1e, f), grains were elongated clearly along RD, and some unidentified points/regions with black colour aligned along RD, that is thought to be the deformation twins/shear bands. The unidentified points/regions are attributed to the smaller twin width or grain size than the step size of EBSD, since such situation results in the failure of the determination of orientation by EBSD.

Figure 2a shows X-ray diffraction (XRD) profile of the HEA depending on r . The HEA is fcc single phase for any r , and the broadening of the peaks occurs with increasing r . The broadening of XRD peaks upon plastic deformation often means the increase in dislocation density L_V . Figure 2b shows the change in Vickers hardness of the CrMnFeCoNi HEA on the cold rolling. Vickers hardness increases about 270 HV from 146 HV at $r = 0\%$ to 417 HV at $r = 90\%$, which can be attributed to the grain subdivision shown in Fig. 1.

Figure 2c shows r dependence on L_V of the HEA. L_V was determined using the modified method (combination of modified WH and modified WA) and the reported elastic constants of a CrMnFeCoNi alloy²⁵. The error bars represent the standard error of the linear fittings, but the deviation is almost within the size of the symbols. The value of $L_V \sim 2 \times 10^{14} \text{ m}^{-2}$ at $r = 0\%$ should be treated as a reference since the grain size may be too large for XRD profile analysis. L_V gradually increases from about $2 \times 10^{14} \text{ m}^{-2}$ at $r = 0\%$ to about $5 \times 10^{14} \text{ m}^{-2}$ at $r = 20\%$. Then, L_V increases to around 2×10^{15} at $r = 40\%$ and 60% . L_V finally increases to be around 4×10^{15} and stays almost constant after $r = 80\%$.

Electrical resistivity measurement. Dependencies of the specific resistivity measured at 293 K (R.T.) ρ_{293} and 77 K ρ_{77} on r are shown in Fig. 2d. The ρ_{293} and ρ_{77} are around $0.95 \text{ m}\mu\Omega$ and around $0.86 \text{ m}\mu\Omega$, respectively. ρ_{293} is always about $0.09 \text{ m}\mu\Omega$ higher than ρ_{77} due to the contribution of the lattice vibration. Initially, ρ_{77} is around $0.88 \text{ m}\mu\Omega$, but it is almost unchanged to be around $0.88 \text{ m}\mu\Omega$ at $r = 20\%$. Then, ρ_{77} decreases down to around $0.85 \text{ m}\mu\Omega$ at $r = 60\%$. When r exceeded 60% , ρ_{77} increases up to $0.86 \text{ m}\mu\Omega$ until r of 90% .

From electrical materials point of view, electrical conductivity at 293 K, γ %IACS, is important, and thus shown in Fig. 2e. It is noted that γ is converted from ρ_{293} . γ is initially at around 1.80%IACS at r up to 20%, and then, increases to around 1.83%IACS at $r = 60\%$. Finally, γ decreases down to around 1.80%IACS at $r = 90\%$.

Small angle diffraction. Figure 3a is the scattering vector, $k = (4\pi \sin\theta)/\lambda$, dependence of scattering intensity obtained by both SAXS and USAXS. Here, θ and λ are the scattering angle and wavelength of the incident X-ray, respectively. The dashed line is for the blank shown as just a reference and should not be compared with the intensity of the measured data.

Lower and higher k regions contain the information of size and shape of fluctuation region of electron density, respectively. In the case of $r = 0\%$, increase in scattering intensity was observed with k between 0.02 nm^{-1} and 0.6 nm^{-1} compared with the blank. For r of 20% and 40%, less increase in the k region can be recognized compared with r of 0%. The gradient in the k region with r of 60% and 90%, are similar to that for blank, thus it can be considered that the origin of the scattering is almost disappeared at around r of 60%. Strictly speaking, slight increase at k of around 1 nm^{-1} can be seen.

As shown in Fig. 3b, guinier diameter: d_f can be evaluated from Guiner plot, which is scattering intensity in natural log versus k^2 . When the peak appears in higher k , size of fluctuation region becomes smaller, and vice versa. The size of fluctuation area becomes smaller with increasing r , since the centre position of the increase in scattering intensity shifts toward higher k . The initial size of d_f is about 35 nm at $r = 0\%$. d_f decreases down

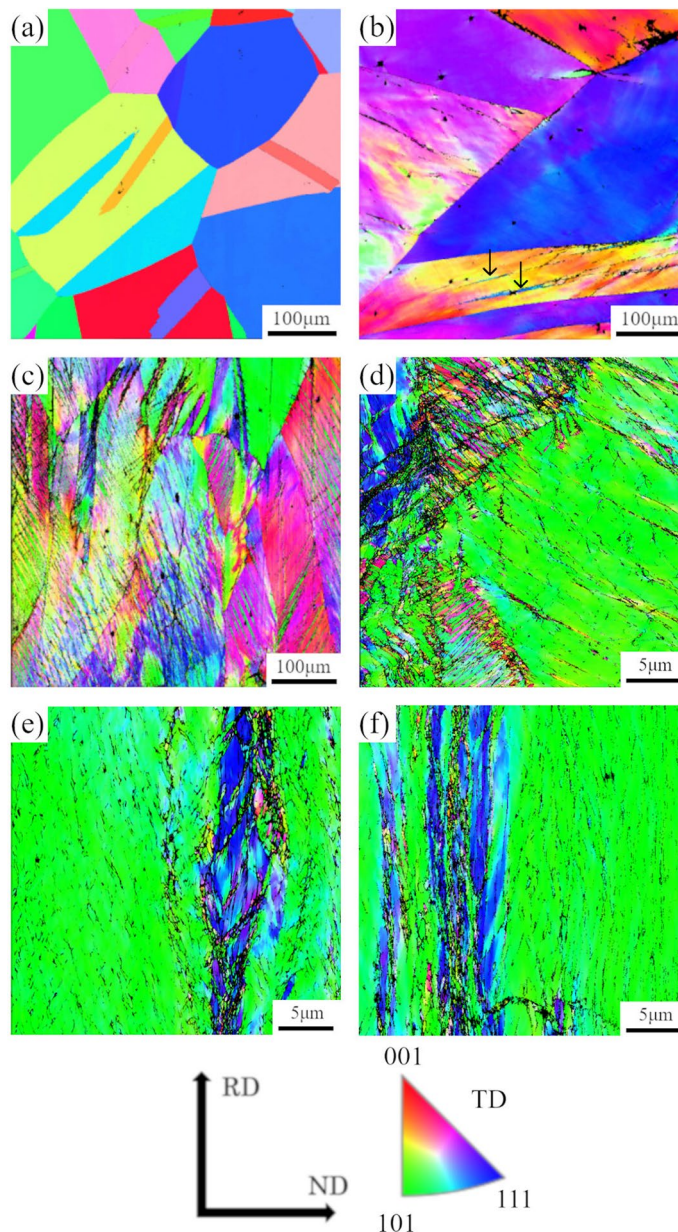


Figure 1. IPF maps of TD planes of CrMnFeCoNi alloy with rolling reduction of (a) 0%, (b) 20%, (c) 40%, (d) 60%, (e) 80%, and (f) 90%.

to 9 nm and 5 nm for $r = 20\%$ and 40% , respectively. d_f at r of 60% and 90% cannot be obtained since the size is too small, thus, d_f is treated as zero.

As shown in Fig. 3c, SAXS/USAXS data can be plotted like $I \times k^3$ versus k^3 following Porod's law^{26,27}. This plot can give the information about the interface between the fluctuated region and matrix. If the interface is clear like precipitates in conventional alloys, $I \times k^3$ should initially increase with increasing k^3 , and then, reaches to a constant value region at higher k^3 . However, such constant region cannot be recognized on Fig. 3c, d It is noted that Fig. 3d is displayed to clarify that the constant region cannot be seen close to the original points. Consequently, the boundary between the fluctuated region and the matrix is thought to be diffusive rather than discontinuous like precipitates in conventional alloys.

Photoemission spectroscopy. Figure 4a shows the wide range survey spectra of HAXPES, and the peaks of Ni, Co, Fe, Mn and Cr can be recognized in addition to the C 1s and O 1s peaks. The expanded data at around $2p_{3/2}$ for Ni, Co, Fe, Mn and Cr are shown in Fig. 4b. The peak of Cr and Mn seems to have slight r dependence at the shoulder of the higher bonding energy side of $2p_{3/2}$ (left hand side of the peaks in Fig. 4b). In other words, both peaks have higher intensity at the left-hand side of the peak when $r = 0\%$. The high intensity shoulder seems to be reduced with increasing r . Whereas, the $2p_{3/2}$ peak for Fe, Co, and Ni seems almost identical for different r .

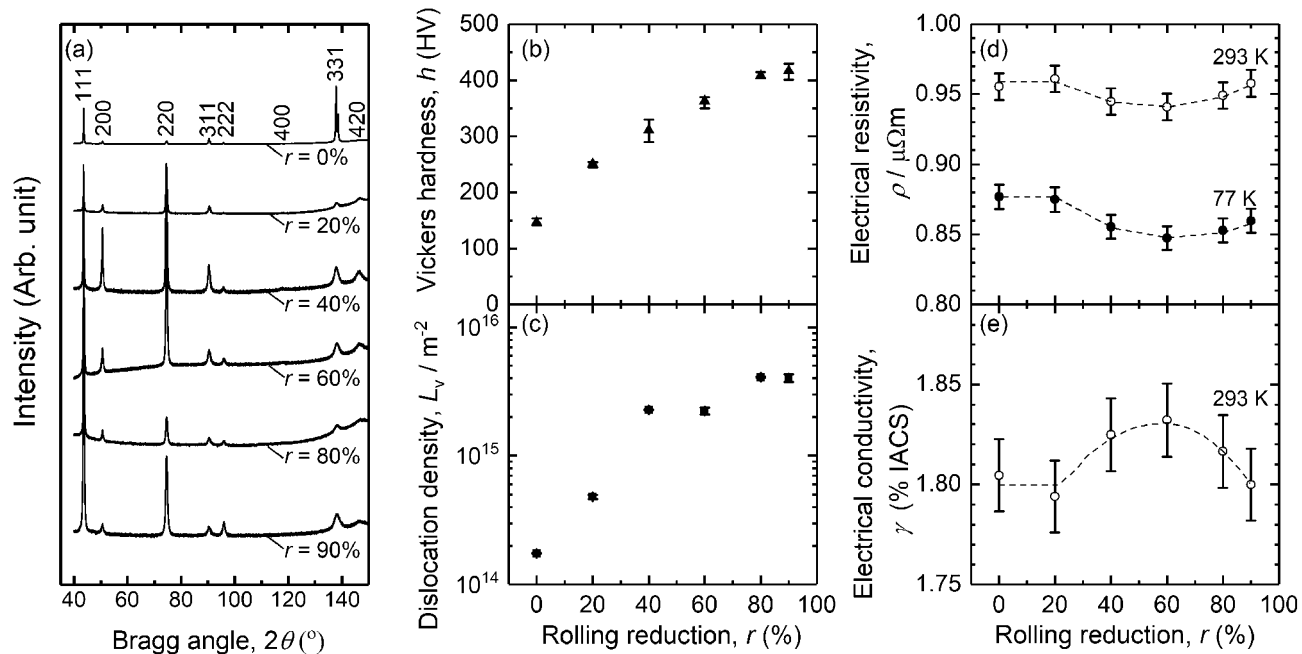


Figure 2. Rolling reduction dependence with the rolling reduction between 0 and 90% of CrMnFeCoNi alloy, (a) XRD spectra, (b) Vickers hardness, (c) dislocation density evaluated using XRD data, (d) electrical resistivity at 77 K and 293 K, and (e) electrical conductivity at 293 K.

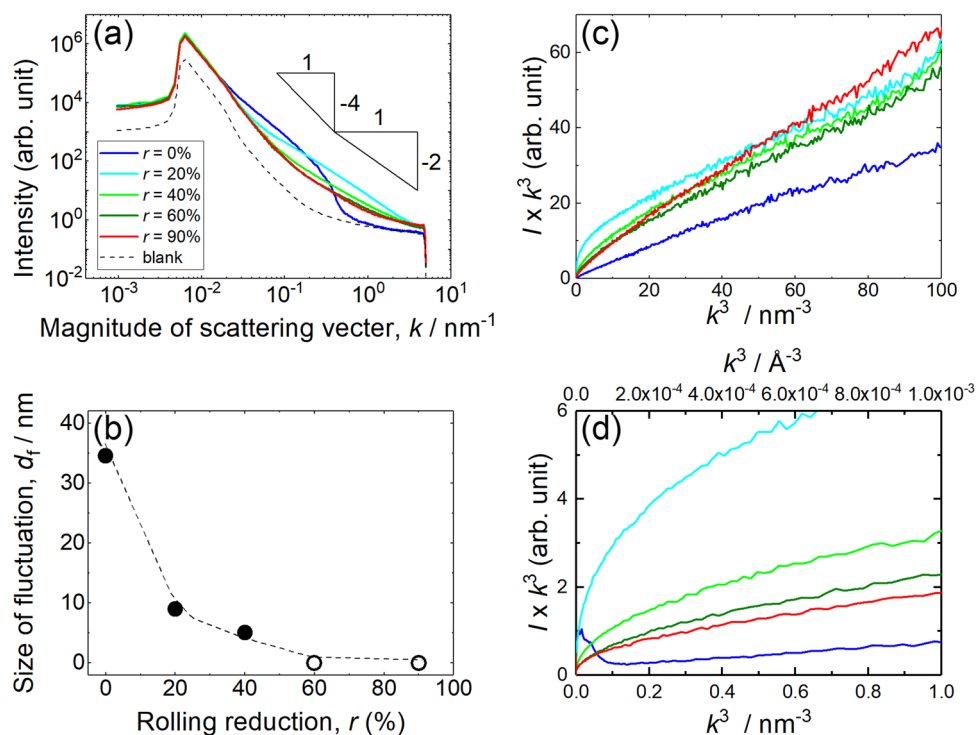


Figure 3. Rolling reduction dependence of (a) scattering intensity versus magnitude of scattering vector for SAXS and (b) size of fluctuation evaluated from SAXS. The triangles in (a) represent the gradient of k^{-4} and k^{-2} . It is noted that white filled circles in (b) represents that the size of fluctuation is too small to be measured by SAXS. It is noted that the blank curve is shown as a reference. (c) $I \times k^3$ versus k^3 plot of CrMnFeCoNi equi-atomic HEA and (d) magnified plot close to the original point of (a).

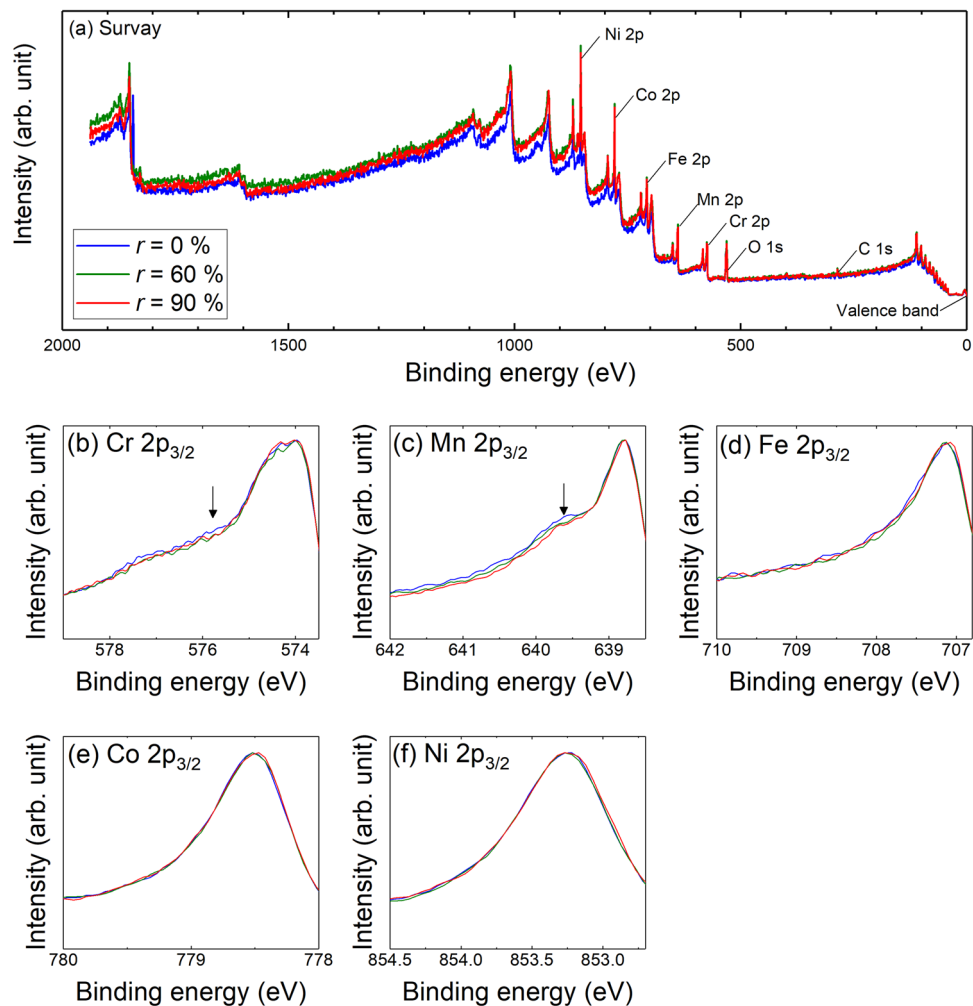


Figure 4. HAXPES spectra of (a) wide range survey with the bonding energy up to about 2000 eV, (b) Cr 2p_{3/2}, (c) Mn 2p_{3/2}, (d) Fe 2p_{3/2}, (e) Co 2p_{3/2}, and (f) Ni 2p_{3/2}. The arrows in (b) and (d) are the guide of the eyes.

It is clearly said that the difference in 2p_{3/2} peak of Cr and Mn are not associated with the oxide, since the effect of oxide should appear much higher bonding energy regions. Thus, HAXPES result indicates that Cr and Mn shows different behavior due to the cold rolling, whereas Fe, Co and Ni seem independent from the cold rolling.

Discussion

From Fig. 1, the grain refinement progresses with increasing r , which is attributed to grain subdivision²⁸. Grain refinement in the present study can consist of three types: formation of subgrains, subdivision due to deformation twins, and formation of ultra-fine grains within shear bands. Such microstructure evolution observed in this study agrees with the detailed microstructure and texture analysis by SEM/EBSD on cold rolled CoCrFeMnNi HEA with the rolling reduction of 90%²¹. The shear band is also confirmed in the report. The formation of deformation twins is attributed to the low SFE of HEA, and the texture analysis, such as the presence of the Brass orientation. Nevertheless, it can be clearly said that the density of GB which can be the scattering centres of free electrons increases with increasing r .

In the case of MEAs/HEAs, the WH and modified method (including convolutional multiple whole profile) has been already applied by some researchers^{29,30}. Thus, it was assumed that determined L_V via XRD peak analysis by the modified method is still applicable for Cantor alloy, at least, change in L_V (ΔL_V) compared with $r = 0\%$ is meaningful. Initial stage of rolling, L_V drastically increases to $\sim 2 \times 10^{15} \text{ m}^{-2}$ at $r = 40\%$. Then, L_V gradually increases to be $\sim 4 \times 10^{15} \text{ m}^{-2}$ with increasing r up to 90%. Nevertheless, L_V is considered to increase with increasing r as shown in Fig. 2c. Therefore, the trend of the Vickers hardness, as shown in Fig. 1, agrees with the microstructure evolution based on the EBSD and XRD measurements.

As shown in Fig. 2d, the values of ρ_{293} and resulting values of γ is similar to the reported value of HEAs^{5,7-10} and conventional alloys Ni-Cr alloy¹² and Ni base super alloy (Alloy625)³¹. It is noted that Ni base super alloy is sometimes classified to MEA. In the case of such Ni alloys, matrix is classified to disordered phase, thus, the distorted lattice in HEAs/MEAs can be similar situation of conventional disordered alloys having relatively high ρ .

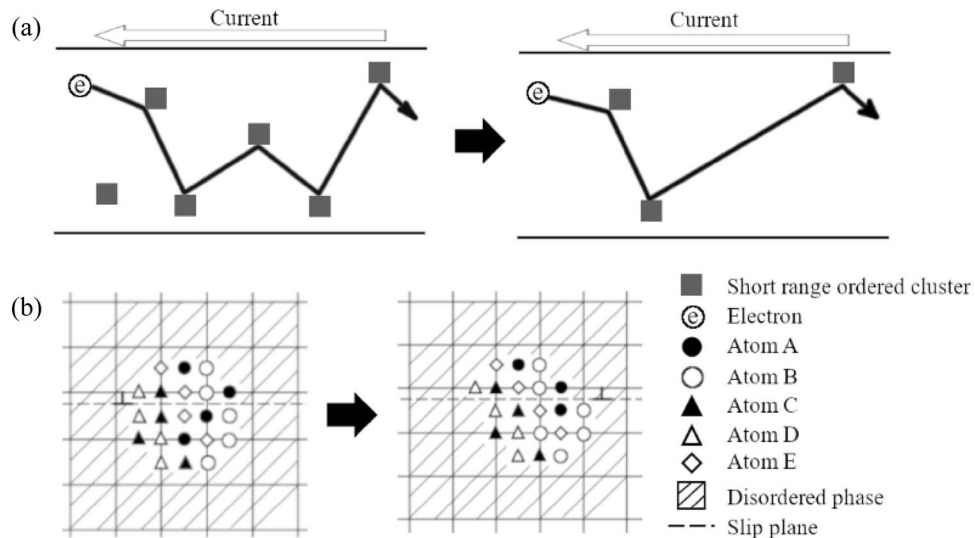


Figure 5. Schematic diagram of a binary alloy. (a) scattering of free electrons by short range ordered domains and (b) cut of short range ordered domain by dislocation due to plastic deformation. It is the modification from the binary alloy case³¹.

In general, the ρ of pure metals and conventional alloys increases as plastic deformation progresses, such as pure Cu³², pure Ni³³, pure Al³⁴, and Al alloys^{34,35}. These electrical responses are strongly associated with the increase in L_V and density of grain boundary S_V , since dislocations and grain boundaries work as scattering centres of free electrons in alloys.

However, the changes in ρ of the HEA with r up to 60% are different from the conventional pure metals and alloys. This discrepancy in electrical behavior agrees well with the literature by Mazur et al.⁹. The reduction in ρ of a CrMnFeCoNi equi-atomic HEA due to rolling is attributed to the K-state which is sometimes called K-effect instead. Such reduction of ρ due to the K-effect is ascribed to the destruction of SRO by the plastic deformation, which is also observed not only in conventional Ni alloys³⁶ but also in Alloy 625³¹.

In the case of conventional alloy, the reduction of ρ is attributed to the destruction of SRO micro domains which are proposed based on the X-ray analysis³⁷. TEM observation and Monte Carlo simulation also support the presence of the SRO domains in binary alloys showing order–disorder transition^{38,39}. Anyhow, electrical resistivity measurement of HEA indicates the presence of SRO domains in microstructure. The cause of characteristic electrical behaviour of the HEA will be discussed by assuming that the HEA has LCO/SRO domains, since the existence of LCO/SRO was experimentally confirmed in MEAs^{14,15}.

Increase in ρ is often explained by the increase of the concentration of the alloying elements in matrix due to the dissolve of precipitates via cutting by dislocations. However, it is not valid in the case of K-effect in HEAs/MEAs, since the matrix of HEAs/MEAs is almost completely mixed. Thus, cutting of LCO/SRO results in local atomic movement within several atomic distance as shown in Fig. 5. The destruction of LCO/SRO should regard as rather locally occurring order–disorder transition via plastic deformation.

Once the destruction of LCO/SRP is completed, decrease in ρ_{77} cannot occur anymore. ρ_{77} showed characteristic behaviour of initial decreasing and then increasing before and after $r = 60\%$, as shown in Fig. 2d. The increase in ρ_{77} can be connected with the increase in the lattice defect density (L_V and S_V). The increase in lattice defect density clearly occurs based on the microstructure observations by FE-SEM/EBS (Fig. 1) and analysis of XRD peak broadening (Fig. 2c).

The large d_f detected by SAXS/USAXS can be associated with the presence of slight modulation of the concentration of the elements with the order of a few tens nm. Actually, 3D atom probe measurement revealed the existence of Cr rich and (Co + Ni) rich layers in CoCrNi MEA¹⁵. Thus, similar modulation may exist in the CrMnFeCoNi equi-atomic HEA. However, even if there is such slight modulation on the concentration of the elements, the magnitude of the modulation on the concentration is quite small. Since the fluctuation regions with d_f of 35 nm at $r = 0\%$ should be large enough to be recognized with this magnification using STEM/EDS 2D-mapping.

As contrary, it is possible to obtain the information about the shape of fluctuation regions with higher region of k above around 0.1 nm^{-1} in Fig. 3a. The scattering intensity changes with k^{-4} and k^{-2} for spherical and disk shapes, respectively. Thus, the shape at $r = 0\%$ is spherical, whereas the shape at $r = 20\%$ and 40% is elongated like a disk. As a conclusion, the fluctuation region elongated from the spherical shape with increasing r , and d_f decreases from about 35 nm down to 0 nm at $r = 60\%$.

However, the initial size of d_f (Fig. 3b) is debatable. For instance, the size of LCO in MEA is around 2 nm from the 3D atom probe measurement¹⁵. The average size of SRO domains appearing in MEA was around 1 nm based on the TEM observation¹⁴. Since the specimen used in the present study is a HEA, there can be such mesoscopic order LCO domains. Such size of region cannot be said SRO anymore. From Fig. 3c, d, the fluctuation area found

Composition	Cr	Mn	Fe	Co	Ni	C	S	O	N
(mass%)	18.42	19.39	19.86	20.76	20.86	0.007	0.0062	0.0100	0.0014
(at.%)	20.01	19.94	20.09	19.90	20.07	–	–	–	–

Table 1. Composition of CrMnFeCoNi alloy.

by SAXS/USAXS may have diffusive boundary which is different from clear/sharp boundary like precipitates/matrix in the conventional alloys. It is noted that the constant region starts is depending on the material.

HAXPES gives information about the chemical bonding of the specimen. For instance, when there is a specific chemical bonding, such as metal–oxygen bonding, a new peak can be seen at a specific bonding energy. However, such strong peak cannot be seen for metal bonding compared with the covalent bonding like metal–oxygen bonding. However, even if the metal bonding gives less intensity on HAXPES, there should be a difference on a peak when the metallic bonding configuration is changed by some reasons.

For instance, the high intensity shoulder was reported on Mn $2p_{3/2}$ peak of Al-Mn alloys. The shoulder is about 1 eV higher than Mn $2p_{3/2}$ peak, which is associated with the change of chemical composition of Al-Mn alloys. In other words, the high intensity shoulder is related to the chemical bonding. Thus, it is thought that the high intensity shoulder appears in Cr and Mn peaks measured by HAXPES are related to the chemical bonding⁴⁰.

From HAXPES (Fig. 4), any changes related to the chemical bonding must appear as the change of the shape of Cr and Mn peaks. Of course, the chemical composition cannot be changed due to the plastic deformation. However, the local configuration of atoms can be modulated due to the plastic deformation via dislocation activities. Such change of local configuration of atoms (metallic bonding) gives the change of the Cr and Mn peaks in HAXPES. Thus, local configuration of Cr and Mn around LCO/SRO domains are changed (see Fig. 5), which agrees with the occurrence of K-effect.

Cr and Mn rich/poor region can exist in CrMnFeCoNi equi-atomic HEA based on the HAXPES results, and the fluctuation regions are distinguished by the density of electrons from SAXS/USAXS measurement point of view. In the CrMnFeCoNi alloy case, composed elements and their number of electrons lined up in the periodical table as the element is written. Thus, the fluctuation regions are related by Cr and Mn. The 3D atom probe measurement on the CoCrNi MEA indicates that Cr rich region appears¹⁵, and therefore the presence of Cr and Mn rich region in CrMnFeCoNi equi-atomic HEA cannot be immediately denied.

Even though the mesoscopic-order domains exist, the change in concentration of Cr and Mn must be quite small since STEM/EDS 2D-mapping show almost homogeneous distribution of all elements. The result of HAXPES may imply that there are specific chemical bonding related to Cr and Mn, which enhance either forming LCO/SRO or modulation of concentration for Cr an Mn.

Conclusions

Comprehensive observations/measurements were adopted for a CrMnFeCoNi equi-atomic HEA in order to connect the change in electrical resistivity and microstructure caused by plastic deformation. SAXS/USAXS implies that there are chemically modulated mesoscopic domains. The fluctuation regions can be associated with fluctuation of the concentration of certain elements, though the modulation of the concentration of the constituent elements cannot be detected by STEM/EDS 2D mappings. Furthermore, both regions can be also destructed and elongated by the plastic deformation like cold rolling. HAXPES measurement suggests that Cr and Mn have specific chemical bonding which can be destructed by plastic deformation, which may relate either LCO/SRO or fluctuation area, or both. The decrease in electrical resistivity with increasing r , so called K-effect, is associated with the reduction of the chemically modulated mesoscopic domains.

Methods

Sample preparation. In the present study, a CrMnFeCoNi equi-atomic HEA was fabricated by vacuum induction melting. The chemical composition of the alloy is shown in Table 1. The size of the ingot was about $\phi = 78 \text{ mm} \times 140 \text{ mm}$, and then, hot-forged at 1423 K, resulting in a plate shape with 15 mm in thickness, 150 mm in width, and 200 mm in length. The scale at surfaces and feeding head were removed, and then, 3 mm thick plates with the width of about 10 mm and length of about 30 mm were cut by an arc discharge cutting machine. The plates were vacuum-sealed in quartz tubes and solution-treated at 1473 K for 10.8 ks using a tube furnace FTSS-520 (Tokyo Garasu Kikai) and then quenched into cold water.

The solution-treated plates were cold-rolled using a rolling mill, with the roll having a diameter of 100 mm (Nihon cross atsuen) without lubrication. The rolling reduction r (%) is defined as thickness reduction divided by the initial thickness. The rolling was performed up to $r = 90\%$. Hereafter, the specimen without rolling is referred to as $r = 0\%$. The sample coordinates were defined as rolling direction (RD), transverse direction (TD), and normal direction (ND). Planes normal to RD, TD, and ND were denoted as RD, TD, and ND planes, respectively.

Vickers hardness tests. The Vickers hardness was measured using an HMV-G30 (SIMADZU) on ND planes of the pre- and post-rolled specimens. The load and duration of the hardness measurement were set to be 5 kgf and 10 s, respectively. Seven points were totally measured, and both maximum and minimum values were excluded, and the remaining five values were used to obtain their average.

Microstructure observations by TEM and SEM/EBSD. The specimens for microstructural observations with a field emission-scanning electron microscope/electron backscattered diffraction (FE-SEM/EBSD) were cut from the rolled sheets using the arc discharge cutting machine. The damaged layer of the surface was removed by emery paper up to #2000, and then electrolytic polishing in the nital solution (nitric acid and methanol mixture with 1:2 in volume) with a voltage of 6 V at 233 K for about 120 s. FE-SEM/EBSD observations were performed using JSM-7900F (JEOL) with the "symmetry" detector controlled by Aztec software (Oxford instruments). The EBSD measurements were performed with the acceleration voltage of 20 kV. The step size of EBSD was set to be 0.5 μm for r is lower than 40%, and ≤ 50 nm for r is higher than 40%.

EDS observations. Energy-dispersive X-ray spectroscopy (EDS) was performed with SEM, and a JSM-6390A (JEOL) equipped with a JED-2300 EDS detector (JEOL) was used. EDS was also performed with scanning transmission electron microscopy (STEM), and a JEM-2100F (JEOL) equipped with a JED-2300 T EDS detector (JEOL) was used. The EDS observations were performed to check the presence of segregation in as-quenched specimen before cold rolling ($r = 0\%$). The acceleration voltage used was 20 kV for SEM and 200 kV for STEM. The Cr K, Fe K, Mn K and Ni K lines were used for the EDS 2D mapping. The specimen for SEM/EDS was fabricated by the same procedure for EBSD measurements. The foil specimens for the STEM/EDS observations were prepared by mechanical polishing using emery paper. They are finished by electrolytic polishing using a Tenupole-5 (Struers) twin-jet polisher with a mixture of perchloric acid, glycerine, and methanol (10%, 20%, and 70%, in volume) at 243 K, with the voltage of 15 V.

XRD measurements. X-ray diffraction (XRD) measurements were performed using X'Pert PRO MPD (PANalytical) with Cu tube ($\lambda = 0.15418$ nm) to determine phase and dislocation density L_V . The voltage and the current of the Cu tube were 45 kV and 40 mA, respectively. The ND plane was selected for the XRD measurements, and a side of the sheet was mechanically polished by emery papers until the thickness was reduced to be 75%. Four peaks (111, 200, 220 and 311) are used for the analysis.

The change in L_V can be determined by some methods, such as Williamson-Hall (WH) method^{41,42}, Warren-Averbuch (WA) method^{43,44}, and their modified method (modified WH, modified WA, and multiple whole profile fitting)⁴⁵⁻⁴⁷. WH method uses the WH plot using following relationship.

$$\frac{(\Delta 2\theta)\cos\theta_B}{\lambda} = \frac{K_s}{D} + \frac{2e\sin\theta_B}{\lambda} \quad (1)$$

Here, $\Delta 2\theta$ is the full width-half maximum, θ_B is the position of Bragg peak, e is the microstrain, K_s is the Scherrer constant which is normally 0.9, and D is the crystallite size. After obtaining e of materials from the slope of the WH plot, e is converted to L_V using the following relationship⁴⁸.

$$L_V = \frac{Ke^2}{b^2} \quad (2)$$

Here, K is a numerical constant depending on the crystal structure (16.1 for fcc), and b is the magnitude of Burgers vector. The WA method is based on the following equation.

$$\ln A(L) = \ln A^S(L) + \ln A^D(L) \quad (3)$$

Here, $A(L)$ is the real part of the Fourier coefficient of the Bragg peak. $A^S(L)$ and $A^D(L)$ are the size and distortion contributions, respectively. L is the Fourier length which appears from the Fourier transformation. From $A^D(L)$, L_V can be obtained.

In the case of modified method, contrast factor C which is the correction term of the dislocation system is introduced⁴⁵⁻⁴⁷. Thus, modified WH plot and modified WA plot gives better fitting compared with the original WH and WA plots, since the elastic anisotropy of dislocations is taken into account. In the case of modified WH plot, following equation is used with the average contrast factor \bar{C} .

$$\Delta K = \frac{0.9}{D} + \alpha(L_V)^{1/2} \left(K \cdot \bar{C}^{1/2} \right) + O\{K^2 C\} \quad (4)$$

Here, α is a constant depending on the effective outer cut-of radius of dislocations, O is the higher order term. $K_s = 0.9$, $\Delta K = \{(\Delta 2\theta)\cos\theta_B\}/\lambda$ and $K = (2\sin\theta_B)/\lambda$ are used.

In the case of modified WA method, Eq. (3) is modified to be Eq. (5).

$$\ln A(L) \cong \ln A^S(L) - (L_V) \frac{\pi b^2}{2} L^2 \ln \left(\frac{R_e}{L} \right) \{K^2 \bar{C}\} + O(K^4 C^2) \quad (5)$$

Here, R_e is the effective cut-of radius of dislocations, and O is the higher order term.

It should also be noted that the modified method introduces new parameters on the arrangement of dislocations $M = R_e(L_V)^{1/246}$, in addition to L_V . Thus, the constant value of L_V may be concerned with the change in the arrangement of dislocations.

Electrical resistivity measurements. Electrical resistivity measurements were performed using a four-terminal method to determine ρ precisely. The two terminals were for current, and the other two terminals located between the two current terminals were for measuring voltage drop. Since the internal resistance of a

nano-voltmeter located between the internal two wires is much higher than the metal specimen, e.g. the order of $M\Omega$ for the internal resistance, almost all current passing through the specimen instead of the voltmeter, and the contact resistance between wires and the specimen and resistance of the wires between a voltmeter can be ignored. Four pure Ni wires with the diameter of 0.3 mm were spot welded using a spot welder NRW-100 W (Nippon Avionics) and a welding head NA-60A (Nippon Avionics). In order to avoid the damage and delamination at the spot-welded contacts, 3D printed ABS resin frame was used. The Ni wires were wrapped with the frame, and therefore the spot-welded contacts can avoid receiving the critical force which occurs during handlings, preparations and electrical measurements. The detail of the shape of the flame can be found elsewhere⁴⁹. Using a precise current source 6220 (Keithley) and a nanovoltmeter 2182A (Keithley), electrical measurements were conducted at 77 K (in liquid nitrogen) and at 293 K (ambient condition) with a constant current of 100 mA. The passing current direction was automatically and alternatively changed during the measurements in order to remove the effect of the thermo-electromotive force appearing at dissimilar metal contacts in the circuit. Finally, the obtained values of ρ was converted from electrical resistance R , using the cross-sectional area of the bar-shaped specimen and the distance between the internal two Ni wires. The errors caused by the measurements of the specimen were less than 1%, and represented as error bars. The change in electrical resistivity at 77 K, $\delta\rho_{77}$, is normally used for the discussion ρ_{77} , since the signal noise ratio (S/N) at 77 K is lower than that at 293 K.

SAXS and USAXS measurements. SAXS and USAXS were performed at a synchrotron radiation facility, BL-19B2 of super photon ring 8 GeV (SPring-8), Japan. The energy of incident X-ray beam was set to 25 keV, and the beam was irradiated with the specimen with the thickness about 0.3 mm. The scattered beam was detected by a two-dimensional detector, PILATUS 2 M, and the transmitted direct beam was blocked by a stopper. The camera length was 3044 mm and 40,774 mm for SAXS and USAXS, respectively.

SAXS/USAXS can detect the fluctuation region in electron density, since X-ray is scattered by electrons. In other word, either the atomic number of elements contained or the density (mass per volume) of the fluctuation region affects the scattering. In general, the former is attributed to the fluctuation region related to the composition and the latter is attributed to the presence of the different phases (e.g. precipitates). Unless determining the type of the fluctuation, it is difficult to determine the precise volume fraction of the fluctuation region. However, the volume fraction can be qualitatively discussed with assuming that the type of fluctuation regions is same among the specimens. The number density of fluctuation region cannot be discussed in the present study since the precise volume fraction of the fluctuation region cannot be precisely determined. Since the estimation of the size is rough error within 50% may be involved.

HAXPES measurements. Hard X-ray photoemission spectroscopy (HAXPES) was performed at BL-46XU of SPring-8⁵⁰. In general, X-ray photoemission spectroscopy (XPS) uses Al K α and Mg K α lines as the excitation sources, whilst HAXPES uses high-flux X-ray from third generation synchrotron radiation facility⁵¹. The energy of the incident X-ray beam from an undulator was 7.94 keV with a Si (111) double crystal and a Si (444) channel cut monochromator. The slit size was 0.5 mm \times 30 mm. The Scienta Omicron R4000-10 kV was used as an analyzer, with the pass energy of 200 eV and the take-off angle of 80°, and the measurements were performed at R.T. The largest difference between XPS and HAXPES is the escape distance of photoelectrons, which is about several nm and a few tens nm for XPS and HAXPES, respectively. Thus, the effect of surface, such as oxidation and C contamination, is less sensitive in the case of HAXPES compared with the conventional XPS.

Data availability

All data generated or analysed during this study are included in this published article (and its Supplementary Information files).

Received: 14 June 2022; Accepted: 21 September 2022

Published online: 06 October 2022

References

1. George, E. P., Raabe, D. & Ritchie, R. O. High-entropy alloys. *Nat. Rev. Mater.* **4**, 515–534 (2019).
2. Sohn, S. S. *et al.* Ultrastrong medium-entropy single-phase alloys designed via severe lattice distortion. *Adv. Mater.* **31**, 1807142 (2018).
3. Ranganathan, S. Alloyed pleasures: Multimetallic cocktails. *Curr. Sci.* **85**(10), 1404–1406 (2003).
4. Yeh, J.-W. *et al.* Nanostructured high-entropy alloys with multiple principle elements: Novel alloy design concepts and outcomes. *Adv. Eng. Mater.* **6**(5), 299–303 (2004).
5. Chou, H.-P., Chang, Y.-S., Chen, S.-K. & Yeh, J.-W. Microstructure, thermophysical and electrical properties in Al_xCoCrFeNi(0 \leq x \leq 2) high-entropy alloys. *Mater. Sci. Eng. B* **163**, 184–189 (2009).
6. Kao, Y. F. *et al.* Electrical, magnetic, and hall properties of Al_xCoCrFeNi high-entropy alloys. *J. Alloy. Compd.* **509**(5), 1607–1614 (2011).
7. Tsai, M.-H. Physical properties of high entropy alloys. *Entropy* **15**(12), 5338–5345 (2013).
8. Zhang, Y., Zuo, T. T., Cheng, Y. Q. & Liaw, P. K. High-entropy alloys with high saturation magnetization, electrical resistivity and malleability. *Sci. Rep.* **3**, 1455 (2013).
9. Mazur, Y. P., Ostapenko, R. V. & Semen'ko, M. O. Influence of a cold plastic deformation on the electrical resistivity of CrMnFeCoNi high-entropy alloy. *Ukrainian J. Phys.* **62**(5), 413–421 (2017).
10. Schneeweiss, O. *et al.* Magnetic properties of the CrMnFeCoNi high-entropy alloy. *Phys. Rev. B* **96**, 014437 (2017).
11. Yu, P. F. *et al.* The high-entropy alloys with high hardness and soft magnetic property prepared by mechanical alloying and high-pressure sintering. *Intermetallics* **70**, 82–87 (2016).
12. Endo, R., Shima, M. & Susa, M. Thermal-conductivity measurements and predictions for Ni–Cr solid solution alloys. *Int. J. Thermophys.* **31**, 1991–2003 (2010).
13. Schneeweiss, O. *et al.* Magnetic properties of the CrMnFeCoNi high-entropy alloy. *Phys. Rev. B* **96**(1), 014437 (2017).

14. Zhang, R. *et al.* Short-range order and its impact on the CrCoNi medium-entropy alloy. *Nature* **581**, 283–287 (2020).
15. Inoue, K., Yoshida, S. & Tsuji, N. Direct observation of local chemical ordering in a few nanometer range in CoCrNi medium-entropy alloy by atom probe tomography and its impact on mechanical properties. *Phys. Rev. Mater.* **5**, 085007 (2021).
16. Schön, C. G. On short-range order strengthening and its role in high-entropy alloys. *Scripta Mater.* **196**, 113754 (2021).
17. Wang, S. D. *et al.* Chemical short-range ordering and its strengthening effect in refractory high-entropy alloys. *Phys. Rev. B* **103**, 104107 (2021).
18. Antillon, E., Woodward, C., Rao, S. I., Akdim, B. & Parthasarathy, T. A. Chemical short range order strengthening in a model FCC high entropy alloy. *Acta Mater.* **190**, 29–42 (2020).
19. Yin, B. L., Yoshida, S., Tsuji, N. & Curtin, W. A. Yield strength and misfit volumes of NiCoCr and implications for short-range-order. *Nat. Commun.* **11**(1), 1–7 (2020).
20. Zhou, D. S. *et al.* Effects of annealing on hardness, yield strength and dislocation structure in single crystals of the equiatomic Cr-Mn-Fe-Co-Ni high entropy alloy. *Scripta Mater.* **191**, 173–178 (2021).
21. Bhattacharjee, P. P. *et al.* Microstructure and texture evolution during annealing of equiatomic CoCrFeMnNi high-entropy alloy. *J. Alloy. Compd.* **587**, 544–552 (2014).
22. Wani, I. S. *et al.* Cold-rolling and recrystallization textures of a nano-lamellar AlCoCrFeNi₂ eutectic high entropy alloy. *Intermetallics* **84**, 42–51 (2017).
23. Yoshida, S. *et al.* Effect of elemental combination on friction stress and Hall-Petch relationship in face-centered cubic high / medium entropy alloys. *Acta Mater.* **171**, 201–215 (2019).
24. Cantor, B., Chang, T. H., Knight, P. & Vincent, A. J. B. Microstructural development in equiatomic multicomponent alloys. *Mater. Sci. Eng. A* **375–377**, 213–218 (2004).
25. Wu, Y. *et al.* In-situ neutron diffraction study of deformation behavior of a multi-component high-entropy alloy. *Appl. Phys. Lett.* **104**(5), 051910 (2014).
26. Chou, C. P. & Turnbull, D. Transformation behavior of Pd-Au-Si metallic glasses. *J. Non-Cryst. Solids.* **17**, 169–188 (1975).
27. Wu, Z. D., Lu, X. H., Wu, Z. H., Kui, H. W., Spinodal decomposition in Pd₄₁Ni₄₁Pt₁₅ bulk metallic glasses. *J. Non-Cryst. Solids.* **385**, 40–46 (2014).
28. Liu, Q. & Hansen, N. Macroscopic and microscopic subdivision of a cold-rolled aluminium single crystal of cubic orientation (vol 454, pg 2555, 1998). *Proc. R. Soc. A* **1999**(455), 4384–4384 (1992).
29. He, J. Y. *et al.* A precipitation-hardened high-entropy alloy with outstanding tensile properties. *Acta Mater.* **102**, 187–196 (2016).
30. Naem, M. *et al.* Extremely high dislocation density and deformation pathway of CrMnFeCoNi high entropy alloy at ultralow temperature. *Scripta Mater.* **188**, 21–25 (2020).
31. Nagata, T., Takeda, K., Adachi, H., Ishikawa, K. & Miyajima, Y. A comparison study of electrical resistivity, Vickers hardness, and microstructures of alloy 625 prior and posterior to rolling. *Mater. Trans.* **63**(3), 278–285 (2022).
32. Miyajima, Y. *et al.* Change in electrical resistivity of pure Cu processed by accumulative roll bonding. *Mater. Trans.* **59**(3), 393–398 (2018).
33. Miyajima, Y., Ueda, T., Adachi, H. & Fujii, T. Change in electrical resistivity in nickel processed by accumulative roll bonding. *Mater. Trans.* **62**(8), 1247–1252 (2021).
34. Miyajima, Y., Fukuda, K., Adachi, H., Fujii, T. & Kato, M. Change in mechanical and electrical properties of accumulative roll bonding processed high-purity aluminum, Al-0.02 mass%Fe and Al-0.2 mass%Fe alloys. *Mater. Trans.* **61**(2), 305–310 (2020).
35. Miyajima, Y. *et al.* Change in electrical resistivity of commercial purity aluminium severely plastic deformed. *Philos. Mag.* **90**(34), 4475–4488 (2010).
36. Starke, E. A., Gerold, V. & Guy, A. G. An investigation of the k-effect in Nickel-Aluminum alloys. *Acta Metall.* **13**, 957–964 (1965).
37. Hashimoto, S. Correlative microdomain model for short-range ordered alloy structures I. Diffraction theory. *Acta Crystallogr.* **A30**, 792–798 (1974).
38. Oki, K., Hata, S. & Kuwano, N. Application of new analytical techniques to the order-disorder transformation in Ni-Mo alloys. *Mater. Jpn.* **36**(9), 862–865 (1997).
39. Hata, S. *et al.* Short range order structures in fcc-based Ni-Mo studied by high resolution transmission electron microscopy with image processing. *Mat. Sci. Eng. A* **312**(1–2), 160–167 (2001).
40. Shukla, A. K. *et al.* Influence of sp-d hybridization on the electronic structure of Al-Mn alloys. *Phys. Rev. B* **77**, 195103 (2008).
41. Williamson, G. K. & Hall, W. H. X-ray line broadening from filed aluminium and wolfram. *Acta Metall.* **1**(1), 22–31 (1953).
42. Hall, E. O., The deformation and ageing of mild steel: III discussion of results. *Proc. Phys. Soc. Sec. B* **64**, 747–753 (1951).
43. Averbach, B. L. & Warren, B. E. Cold work and particle size broadening in X-ray diffraction lines. *Phys. Rev.* **78**(5), 644–644 (1950).
44. Warren, B. E. & Averbach, B. L. The effect of cold-work distortion on X-ray patterns. *J. Appl. Phys.* **21**(6), 595–599 (1950).
45. Ungar, T. & Borbely, A. The effect of dislocation contrast on x-ray line broadening: A new approach to line profile analysis. *Appl. Phys. Lett.* **69**(21), 3173–3175 (1996).
46. Ungar, T., Borbely, A., Goren-Muginstein, G. R., Berger, S. & Rosen, A. R. Particle-size, size distribution and dislocations in nanocrystalline tungsten-carbide. *Nanostruct. Mater.* **11**(1), 103–113 (1999).
47. Ribarik, G., Ungar, T. & Gubicza, J. MWP-fit: a program for multiple whole-profile fitting of diffraction peak profiles by ab initio theoretical functions. *J. Appl. Crystallogr.* **34**, 669–676 (2001).
48. Williamson, G. K. & Smallman, R. E. Dislocation densities in some annealed and cold-worked metals from measurements on the X-Ray Debye-Scherrer spectrum. *Philos. Mag.* **1**(1), 34–46 (1956).
49. Miyajima, Y. *et al.* Microstructural change due to isochronal annealing in severely plastic-deformed commercial purity aluminium. *Philos. Mag.* **95**(11), 1139–1149 (2015).
50. Yasuno, S., Oji, H., Koganezawa, T., Watanabe, T., Hard x-ray photoelectron spectroscopy equipment developed at beamline BL46XU of SPring-8 for industrial researches. In *AIP Conference Proceedings*; 2016. p. 030020.
51. Kobayashi, K. Hard X-ray photoemission spectroscopy. *Nucl. Instrum. Methods Phys. Res. A* **601**, 32–47 (2009).

Acknowledgements

This study was financially supported by a Grand-in-aid for Scientific Research on Innovative Area (18H05455 and 19H05168, and 19K05056) through the Ministry of Education, Culture, Sports, Science and Technology (MEXT), Japan/Japan society of promotion of science, General research and development grants of Amada foundation Japan, Incentive grant for research into new university technologies of Sibuya Science Culture and Sports Foundation Japan, and the Kanazawa University frontier science and innovation cooperation young investigator grant and “SANTO” project for promotion of research. The HAXPES experiments were performed at the BL46XU of SPring-8 with the approval of the Japan Synchrotron Radiation Research Institute (JASRI) (Proposal Nos. 2020A1608, 2020A1612, 2020A1736, and 2021A1553). SY was financially supported by the Grant-in-Aid for Research Activity Start-up (No. JP21K20487), and the Grant-in-Aid for JSPS Research Fellow (No. JP18J20766).

Author contributions

Y.M., T.N. and K.T. prepared all figures. Y.M., T.N., and K.T. wrote the original manuscript. Y.M., Sh.Y., Sa.Y., C.W, I.K., H.A., and N.T. designed the experimental. T.N performed electrical measurement, microstructure observations, and mechanical tests. K.T. performed the XRD measurements and analysis. K.T. and K.I. performed SEM/EDS measurements. Sh.Y. performed the STEM/EDS measurements. H.A. performed SAXS measurements and analysis. Sa.Y. performed HAXPES measurements. Sh.Y. and N.T. fabricated the alloys. All authors discussed the results and commented on the manuscript.

Competing interests

The authors declare no competing interests.

Additional information

Supplementary Information The online version contains supplementary material available at <https://doi.org/10.1038/s41598-022-20932-y>.

Correspondence and requests for materials should be addressed to Y.M.

Reprints and permissions information is available at www.nature.com/reprints.

Publisher's note Springer Nature remains neutral with regard to jurisdictional claims in published maps and institutional affiliations.



Open Access This article is licensed under a Creative Commons Attribution 4.0 International License, which permits use, sharing, adaptation, distribution and reproduction in any medium or format, as long as you give appropriate credit to the original author(s) and the source, provide a link to the Creative Commons licence, and indicate if changes were made. The images or other third party material in this article are included in the article's Creative Commons licence, unless indicated otherwise in a credit line to the material. If material is not included in the article's Creative Commons licence and your intended use is not permitted by statutory regulation or exceeds the permitted use, you will need to obtain permission directly from the copyright holder. To view a copy of this licence, visit <http://creativecommons.org/licenses/by/4.0/>.

© The Author(s) 2022