



Diseases of Iberian ibex (*Capra pyrenaica*)

Marta Valldeperes^{1,2} · Paloma Prieto Yerro^{3,4} · Jorge Ramón López-Olvera^{1,2} · Paulino Fandos⁵ · Santiago Lavín^{1,2} · Ramón C. Soriguer Escofet⁶ · Gregorio Mentaberre^{2,7} · Francisco Javier Cano-Manuel León⁸ · José Espinosa⁹ · Arián Ráez-Bravo^{1,2} · Jesús M. Pérez^{2,4,10} · Stefania Tampach^{1,2} · Josep Estruch^{1,2} · Roser Velarde^{1,2} · José Enrique Granados^{2,4,11}

Received: 31 January 2023 / Revised: 3 February 2023 / Accepted: 2 May 2023 / Published online: 1 June 2023
© The Author(s) 2023

Abstract

Iberian ibex (*Capra pyrenaica*) is an ecologically and economically relevant medium-sized emblematic mountain ungulate. Diseases participate in the population dynamics of the species as a regulating agent, but can also threaten the conservation and viability of vulnerable population units. Moreover, Iberian ibex can also be a carrier or even a reservoir of pathogens shared with domestic animals and/or humans, being therefore a concern for livestock and public health. The objective of this review is to compile the currently available knowledge on (1) diseases of Iberian ibex, presented according to their relevance on the health and demography of free-ranging populations; (2) diseases subjected to health surveillance plans; (3) other diseases reported in the species; and (4) diseases with particular relevance in captive Iberian ibex populations. The systematic review of all the information on diseases affecting the species unveils unpublished reports, scientific communications in meetings, and scientific articles, allowing the first comprehensive compilation of Iberian ibex diseases. This review identifies the gaps in knowledge regarding pathogenesis, immune response, diagnostic methods, treatment, and management of diseases in Iberian ibex, providing a base for future research. Moreover, this challenges wildlife and livestock disease and wildlife population managers to assess the priorities and policies currently implemented in Iberian ibex health surveillance and monitoring and disease management.

Keywords Disease · Epidemiology · Iberian ibex · Management · Pathogens · Sarcoptic mange

Introduction

Disease can be defined as damage or deterioration affecting normal functions, including responses to extrinsic and intrinsic factors such as nutrition, climate, toxic agents,

micro- and macroparasites, and congenital defects, alone or combined (Wobeser 1994). Wildlife can share diseases with humans, known as zoonoses, as well as with domestic animals. Thus, wildlife diseases are relevant for human and

✉ Jorge Ramón López-Olvera
elrebeco@yahoo.es; Jordi.Lopez.Olvera@uab.cat

¹ Servei d'Ecopatologia de Fauna Salvatge (SEFaS), Universitat Autònoma de Barcelona, 08193 Barcelona, Bellaterra, Spain
² Wildlife Ecology & Health Group (WE&H), Barcelona, Spain
³ Parque Natural de las Sierras de Cazorla, Segura y Las Villas, C/ Martínez Falero 11, 23470, Cazorla, Jaén, Spain
⁴ Grupo de Investigación RNM 118. Biología de Especies Cinegéticas y Plagas, Jaén, Spain
⁵ C/Ocaña 44 2º D, 28047 Madrid, Spain
⁶ Estación Biológica de Doñana (CSIC), Av. Américo Vespucio sn, 41092 Sevilla, Spain

⁷ Departament de Ciència Animal, Universitat de Lleida, 25198 Lleida, Spain

⁸ Junta de Andalucía, Departamento de Actuaciones en el Medio Natural, Av. Joaquina Eguaras 2, 18013 Granada, Spain

⁹ Departamento de Sanidad Animal, Facultad de Veterinaria and Instituto de Ganadería de Montaña (CSIC-ULE), Universidad de León, 24071 León, Spain

¹⁰ Department of Animal and Plant Biology, and Ecology, Jaén University, Campus Las Lagunillas, 23071 Jaén, Spain

¹¹ Parque Nacional y Parque Natural de Sierra Nevada. Ctra., Antigua de Sierra Nevada Km 7, Pinos Genil, 18191 Granada, Spain

domestic livestock health, since wildlife can act as a disease reservoir, but they are also a matter of concern for wildlife conservation, particularly in endangered species or populations (Gortázar et al. 2007, 2016; Cunningham et al. 2017).

Iberian ibex (*Capra pyrenaica*) is a medium-sized mountain ungulate, formerly endemic to the Iberian Peninsula but recently introduced in the northern Pyrenees in France (Manceau et al. 1999; Granados et al. 2001; Pérez et al. 2002; Acevedo and Cassinello 2009; Alados and Escós 2017; Garnier 2021). Although two of the four subspecies originally described are extinct, most of the Iberian ibex evolutionary significant units and populations are currently expanding and spreading or at least stable (Granados et al. 2001; Pérez et al. 2002; Acevedo and Cassinello 2009; Alados and Escós 2017). However, some ibex populations are vulnerable to risk factors that threaten their viability and conservation, including habitat alteration and fragmentation, inadequate management, overabundance, low genetic diversity, competition with domestic and wild ungulates, human disturbance, and diseases (Manceau et al. 1999; Pérez et al. 2002; Acevedo and Cassinello 2009). On the other hand, the expansion of this species increases the risk of direct or indirect transmission of pathogens with other wild and domestic animals and/or humans (Gortázar et al. 2007, 2016; Lawson et al. 2021).

Research and reviews on wildlife diseases, conservation, and management are required (Illarietti et al. 2023). The objective of this review is to compile the currently available knowledge on diseases of Iberian ibex. The diseases are presented in order of relevance, dealing first with those with proven disease, epizootic, and/or mortality effects on free-ranging Iberian ibex populations (“[Infectious diseases causing disease and mortality in Iberian ibex populations](#)” section) and then the diseases included in the Spanish national wildlife health surveillance program (Lawson et al. 2021; Gobierno de España et al. 2022; “[Diseases under targeted surveillance in the Iberian ibex](#)” section), followed by other diseases investigated and/or reported in Iberian ibex but with little or unknown effects in population health and demography (“[Other diseases](#)” section). Finally, the diseases favored by captivity are specifically mentioned, since captive Iberian ibex populations are subjected to particular conditions and health risks (Granados et al. 1996b; Espinosa et al. 2017c).

Infectious diseases causing symptomatology and mortality with demographic impact in Iberian ibex populations

Sarcoptic mange

Sarcoptic mange is considered an emerging or re-emerging zoonotic disease, caused by the skin-burrowing mite *Sarcoptes scabiei*. This mite is considered a single species with host taxon-specific

varieties, which are morphologically undistinguishable although they have high host specificity and low capacity of cross-infection (Fain 1968, 1978; Pence et al. 1975; Arlian et al. 1984b; Walton et al. 1999; Zahler et al. 1999; Pence and Ueckermann 2002; Rasero et al. 2010). Additionally, within each taxon, geographic differences can also be found (Berrilli et al. 2002).

Despite such specificity, interspecific transmission of *S. scabiei* has been reported within the same taxon among domestic and wild species both for ungulates and carnivores (Kutzer 1966; Samuel 1981; Ibrahim and Abu-Samra 1987; León-Vizcaíno et al. 1992; Lavín et al. 2000a; Menzano et al. 2007; Valldeperes et al. 2021). Cross-transmission related to predation and scavenging with the establishment of specific predator/scavenger-prey cycles has also been documented (Gakuya et al. 2011; Oleaga et al. 2011; Matsuyama et al. 2019). Being a zoonotic disease, cross-transmission between humans and different animal species also occurs, either directly or mediated through domestic animals, especially pets (Arlian et al. 1984b; Morsy et al. 1994; Mitra et al. 1995; Menzano et al. 2004; Walton and Currie 2007; Rentería Solís et al. 2014; Pisano et al. 2019; Moroni et al. 2022b). Nevertheless, such interspecific transmissions among hosts from different taxa are usually self-limited both in the individual host and in the population and thus do not lead to outbreaks or demographic consequences. On the other hand, although they usually act as dead-end hosts, these temporal host species could be relevant as parasite reservoirs for the original natural host species (Menzano et al. 2004; Rossi et al. 2007).

Sarcoptic mange is an emerging panzootic in wildlife, reported in up to 148 domestic and wild animal mammal species, including humans, causing wildlife population declines and livestock economic losses (Pence and Ueckermann 2002; Walton et al. 2004; Escobar et al. 2022). Among the wild host species, the effect of sarcoptic mange has been dramatic when affecting mountain caprine populations in Eurasia, being considered a health emergency at the wild/domestic caprine interface in Europe (Rossi et al. 2019; Pérez et al. 2021). Particularly, sarcoptic mange has been described in most of the Iberian ibex populations, frequently associated with dramatic demographic declines (Fandos 1991; León-Vizcaíno et al. 1999; Valldeperes et al. 2018a, b).

Etiology

Sarcoptes scabiei has a monoxenous life cycle, developing all the stages in a single host. Once fertilized, females burrow galleries in the host skin and lay up to 50 eggs during their 4–6 weeks lifetime, at a rhythm of 3–4 eggs per day (Walton and Currie 2007; Arlian and Morgan 2017). After three to eight days, hexapodial larvae exit the eggs and burrow into short galleries known as pouches. There they molt consecutively to protonymphs in 3 to 4 days, to tritonymphs in 2 to 3 days, and finally into adults after 2 or 3 days more

(Arlian and Vyszynski-Moher 1988; Bornstein et al. 2001). Apparently, less than 1% of the eggs complete this cycle to become adults (Mellanby 1944).

Survival of *S. scabiei* off the host is limited because the mites cannot maintain their water balance. Mite survival increases with lower temperatures and higher humidity, although rising temperatures up to 35° enhance mite mobility (Mellanby et al. 1942; Arlian et al. 1989). Congelation at -25 °C and 50% of relative humidity for 90 min killed 100% of *S. scabiei* var. *canis* mites (Arlian et al. 1984a). The lifespan of adult females and nymphs doubles that of male mites (Arlian et al. 1989).

Symptomatology, pathogenesis, and immune response

Clinical signs vary depending on the host species and the individual immune status (Pence and Ueckermann 2002), but sarcoptic mange consistently induces skin local inflammatory response directly related to the severity of the disease and the number of mites (Petersen et al. 2004). Clinical signs include pruritus, seborrhoea, erythema, papules, and alopecia, progressing to hyperkeratosis, skin thickening, and crusts when the disease becomes chronic, followed by secondary bacterial infections (Bornstein et al. 2001; Nakagawa et al. 2009; Niedringhaus et al. 2019; Swe et al. 2014; Espinosa et al. 2017d). These secondary bacterial infections are favored by the immunosuppressing action of the mite and the scratching lesions (Mika et al. 2012; Swe et al. 2014), originating deep recurring pyodermas that can evolve to septicæmia (McCarthy et al. 2004; Nakagawa et al. 2009). In Iberian ibex, five categories regarding the extension of body surface affected by lesions compatible with sarcoptic mange have been defined, namely, 0, without apparent lesions; grade I, skin surface affected $\leq 25\%$; grade II, skin surface affected between 25 and 50%; grade III, skin surface affected between 50 and 75%; and grade IV, skin surface affected $> 75\%$ (Pérez et al. 2011a; Ráez-Bravo et al. 2015) (Fig. 1). However, *S. scabiei* infestation has further multisystemic consequences beyond the local skin lesions (Espinosa et al. 2020), including a reduction in body condition, hematological and serum biochemical disorders (Perez et al. 2015), increase in oxidative stress with a decrease in the antioxidant status (Saleh et al. 2011; Espinosa et al. 2017b; Naesborg-Nielsen et al. 2022), and/or inflammatory acute phase protein response (Ráez-Bravo et al. 2015; Pastor et al. 2019), with amyloid deposits in parenchymal organs (Espinosa et al. 2017d, 2020). All these changes contribute to the pathogenesis of the disease, reducing survival and/or hampering the recovery of ibexes in chronic stages of sarcoptic mange. The intense pruritus and continuous scratching related to the massive release of histamine and other antigenic compounds impair feeding and resting, causing constant stress and energetic imbalance (Bates 1997). This negative energy balance is further worsened by heat loss due

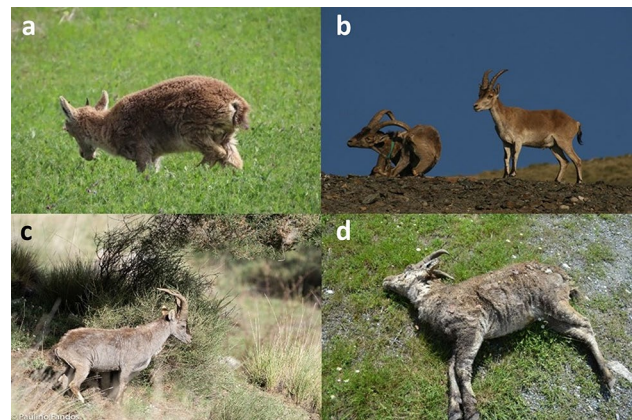


Fig. 1 Iberian ibexes affected by sarcoptic mange with skin lesions of different severity. **a** Female ibex with mild sarcoptic mange (grade I). **b** Scratching mangy adult male collared for monitoring (left) accompanied by a healthy young male. **c** Young male ibex with severe sarcoptic mange (grade III–IV). **d** Young male ibex died because of sarcoptic mange with 100% of the body surface affected (grade IV)

to general hair loss (Cross et al. 2016; Simpson et al. 2016; Süld et al. 2017) and feeding impairment by severe lesions in the lips making food apprehension difficult (Abu-Samra et al. 1981; León-Vizcaíno et al. 1999), leading overall to weight loss independently of the availability of resources, which is more severe in males (Carvalho et al. 2015; López-Olvera et al. 2015). The progressive decline of physical condition also affects reproduction (Davies 1995; Sarasa et al. 2011; Espinosa et al. 2017a), skeletal development, and body and horn growth (Serrano et al. 2007; Pérez et al. 2011b).

As the pathogenic effects of the mites, host immune response against sarcoptic mange is also both local and systemic. Systemically, *S. scabiei* infestation induces antibody production, namely, immunoglobulins E and G, although this systemic immune humoral response is correlated with the extension of the lesions, acting as an indicator of inflammation rather than being protective (Lastras et al. 2000; Rodríguez-Cadenas et al. 2010; Pérez et al. 2015; Ráez-Bravo et al. 2016; Naesborg-Nielsen et al. 2022). Similarly, the acute-phase protein response is also correlated with the severity of sarcoptic mange in Iberian ibex (Ráez-Bravo et al. 2015). Although the effects of sarcoptic mange in male Iberian ibex are more severe (López-Olvera et al. 2015), the systemic humoral immune response is more intense in females, either naïve or in reinfestations (Sarasa et al. 2010). Thus, although previous exposition to the mite may induce a certain resistance to reinfection, with a faster and more intense systemic immune response (Van Neste 1986; Arlian et al. 1994a, b; Arlian et al. 1996, 1995; Taringan 2014), in Iberian ibex, this seems to be true for males rather than for females (Sarasa et al. 2010). The systemic cellular immune response consists of an increase in leukocyte count, including an increase in T lymphocytes, neutrophils, and eosinophils in the blood (Pérez et al. 2015).

In the skin, sarcoptic mange induces a local immune cellular response with macrophages and T lymphocytes and, to a lesser extent, B lymphocytes and plasma cells, overall resembling a type I and/or type IV hypersensitivity immune response (Lalli et al. 2004; Salvadori et al. 2016; Bhat et al. 2017; Martínez et al. 2020; Naesborg-Nielsen et al. 2022). The predominant cellular type and the immune response pathway and genes activated by the mite seem to determine the clinical outcome of scabietic humans and animals. Consequently, in wildlife species, the local immune cellular response can determine the probability of individual survival and the population demographic impact. Overall, the individuals developing a less intense but more efficient local skin inflammatory cellular response have more probability of developing mild clinical mange, preventing the progression to severer disease (Bhat et al. 2017; Ráez-Bravo 2019). Immunosuppressant effects by the mite through the down-regulation of the immune response pathways and genes to facilitate the colonization of the skin have been suggested (Lalli et al. 2004; Mika et al. 2012; Ráez-Bravo 2019). The trade-off between the immunosuppressing action of the mite and the local and systemic immune response of the hosts determines the distribution and abundance of mites in the affected skin, which is not homogeneous (Castro et al. 2016; Arlian and Morgan 2017); the number of mites carried by a host; the proportion of skin surface affected; the severity of the disease; and, consequently, the clinical outcome (Pérez et al. 2011a; Ráez-Bravo 2019).

Diagnosis

There is not yet a diagnostic method for sarcoptic mange with the ideal sensitivity and specificity (Chandler and Fuller 2019; Pérez et al. 2021). While visual diagnosis is the most basic, extended, and long-term used method for sarcoptic mange monitoring on the field and has therefore become the reference (Pérez et al. 2011a) (Fig. 1), both false negatives and false positives occur (Valldeperes et al. 2019; Pérez et al. 2021). Such limitations led to the recommendation of completing visual diagnosis on the field with the detection of mites and/or eggs in skin scrapings or biopsies digested with potassium hydroxide (Pérez et al. 2011a; Valldeperes et al. 2019), unveiling an 87% sensitivity and a 61% specificity for visual diagnosis on the field (Valldeperes et al. 2019). However, this method requires capturing and handling the ibex or retrieving the carcass for sampling, and while 100% specific, it can also produce false negatives (Rambozzi et al. 2004; Walton and Currie 2007; Walter et al. 2011).

Further advances in sarcoptic mange diagnosis have been proposed to overcome limitations and improve sensitivity, specificity, and/or applicability on the field, including (1) molecular techniques to detect genetic material of *S. scabiei* through polymerase chain reaction (PCR) (Mounsey et al.

2012; Alasaad et al. 2015), which allows phylogenetic analyses (Ueda et al. 2019; Moroni et al. 2021); (2) detection of the immunoglobulin G generated by the host species after contact with *S. scabiei* (Puigdemont et al. 2002; Rambozzi et al. 2004; Bornstein et al. 2006; Casais et al. 2007; Oleaga et al. 2008; Millán et al. 2012; Haas et al. 2015a; Ráez-Bravo et al. 2016), which allows retrospective epidemiologic studies (Haas et al. 2018); (3) camera-trapping, useful for detecting mange in naïve or suspected areas reducing surveillance effort but unreliable to assess prevalence and with the same probability of false negatives and positives as visual diagnosis (Oleaga et al. 2011; Haas et al. 2015b; Brewster et al. 2017; Carricondo Sánchez et al. 2017; Saito and Sonoda 2017); (4) thermal imaging, based in the increased body heat radiation of many individuals due to hair loss and skin inflammation, with low sensitivity beyond a distance of 100 m and therefore mostly useful only with handled individuals (Cross et al. 2016; Arenas et al. 2002; Granados et al. 2011), where other reliable specific and sensitive alternatives exist; and (5) trained dogs, which have successfully detected dead chamois or severely affected by sarcoptic mange in the Alps, apparently with high sensitivity and 100% specificity (Alasaad et al. 2012). However, none of these diagnostic methodologies have been either validated or standardized yet.

Finally, the non-specific increases of acute-phase proteins and oxidative stress induced by sarcoptic mange have been proposed to diagnose and monitor sarcoptic mange in wildlife (Rahman et al. 2010; Ráez-Bravo et al. 2015; Espinosa et al. 2017b). However, these indicators can also increase for other disorders (Pastor et al. 2019) and therefore cannot be considered diagnostic for an individual, although they can be helpful to monitor wildlife populations where sarcoptic mange is the only or the main disease circulating.

Epidemiology

Direct contact between infested and naïve hosts is the main transmission route of *S. scabiei*. The individuals with chronic lesions and higher percentages of affected skin carrying more mites are the main source of infestation for their conspecifics (Arlian and Vyszensky-Moher 1988; Pérez et al. 2011a). Nevertheless, indirect transmission through fomites also exists. Sarcoptic mange epidemiology is further determined by both intrinsic factors, such as host sex, age, body condition, and social behavior (González-Candela and León-Vizcaíno 1999; Rahbari et al. 2009; Carvalho et al. 2015; López-Olvera et al. 2015), and extrinsic factors, such as temperature, relative humidity, and seasonality (Pérez et al. 1997a; Rahbari et al. 2009; Pérez et al. 2011a, 2017; Iacopelli et al. 2020; Martín-Monedero et al. 2022; Pérez et al. 2022).

Beyond these particular determinants, in naïve free-ranging populations of wild mountain ungulates, the entry of *S. scabiei* produces an epizootic of disease that spreads to affect the

whole population in a variable number of years (Fernández-Morán et al. 1997; Pérez et al. 1997a; León-Vizcaíno et al. 1999; Rossi et al. 2007; Turchetto et al. 2014; Valldeperes et al. 2018a, b; Obber et al. 2022; Sosa et al. 2022). Such outbreaks are usually associated with variable mortality rates until sarcoptic mange becomes enzootic and the population eventually starts recovering. Nevertheless, the affected populations do not always reach the densities existing before the epizootics, which are also conditioned by other factors such as population abundance and genetic variability before the outbreak, interspecific competition, culling management strategy, and other population, environment, and management factors (Fandos 1991; Loison et al. 1996; Pérez et al. 1997a, 2021, 2022; León-Vizcaíno et al. 1999; González-Quirós et al. 2002a, b; González-Candela et al. 2004; Rossi et al. 2007; Nores and González-Quirós 2009; Espinosa et al. 2020; Granados et al. 2020) (Fig. 2).

This eco-epidemiological transition from epizootic outbreak to endemic disease participating as a regulation factor in population dynamics has occurred in most of the Iberian ibex populations affected by sarcoptic mange (Fig. 3; Fandos 1991; Pérez et al. 1992; Pérez et al. 1994; Palomares and Ruiz-Martínez et al. 1993; Ruiz Martínez et al. 1996; Pérez et al. 1997a; Sánchez 1998; León-Vizcaino et al. 1999; Sánchez Isarria et al. 2008a, b; Prada and Herrero 2013; Mentaberre et al. 2015; Valldeperes et al. 2018a, b). The initial outbreaks

provoked variable mortalities, reaching up to 90% (Fandos 1991; Pérez et al. 1997a; León-Vizcaíno et al. 1999), but afterward, the disease remained enzootic in all the affected populations, with prevalences even below 1% and, correspondingly, associated low mortality (Ruiz-Martínez et al. 1993). These enzootic situations, however, can be intercalated with sporadic outbreaks with associated mortality below 20% (Gil Collado 1960).

Such eco-epidemiological transition can only be explained by the apparition of mange-resistant hosts during the epizootic phase (Guberti and Zamboni 2000; Turchetto et al. 2014; Pérez et al. 2022), as demonstrated, among other evidences, by (1) the transition of sarcoptic mange in the affected populations from epizootic to enzootic, with decreasing prevalences reaching values down to 1% (Fandos 1991; Pérez et al. 1997a, 2021, 2022; León-Vizcaíno et al. 1999; Valldeperes et al. 2018a, b; Granados et al. 2020); (2) the differential clinical outcome of free-ranging many ibexes, with recovery and long-term survival of the resistant individuals (over 649 days), as compared to critical and rapidly lethal clinical evolution in the non-resistant ones (around 90 days) (León-Vizcaíno et al. 1999; Alasaad et al. 2013) (Fig. 4); and (3) the identification of the same clinical trends and outcomes (total recover, partial recover, and terminal) in Iberian ibexes experimentally infested with *S. scabiei* (Ráez-Bravo et al. 2015, 2016; Espinosa et al. 2017d, 2017b; Ráez-Bravo 2019; Valldeperes et al. 2019).

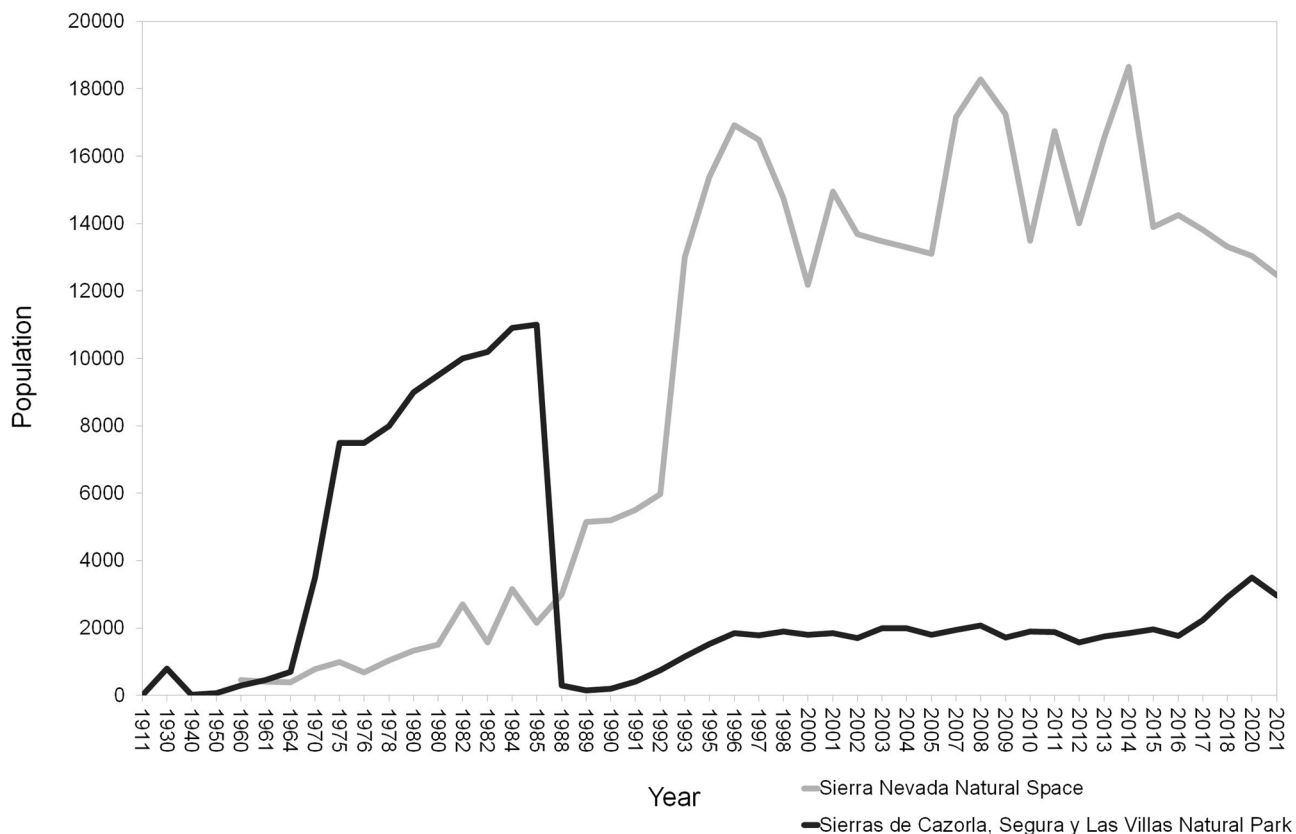


Fig. 2 Different population trends in two Iberian ibex populations affected by sarcoptic mange, namely, Sierras de Cazorla, Segura y Las Villas Natural Park population (deep gray) and Sierra Nevada

Natural Space population (light gray), before and after the outbreak in 1985-1986 and 1992-1993, respectively

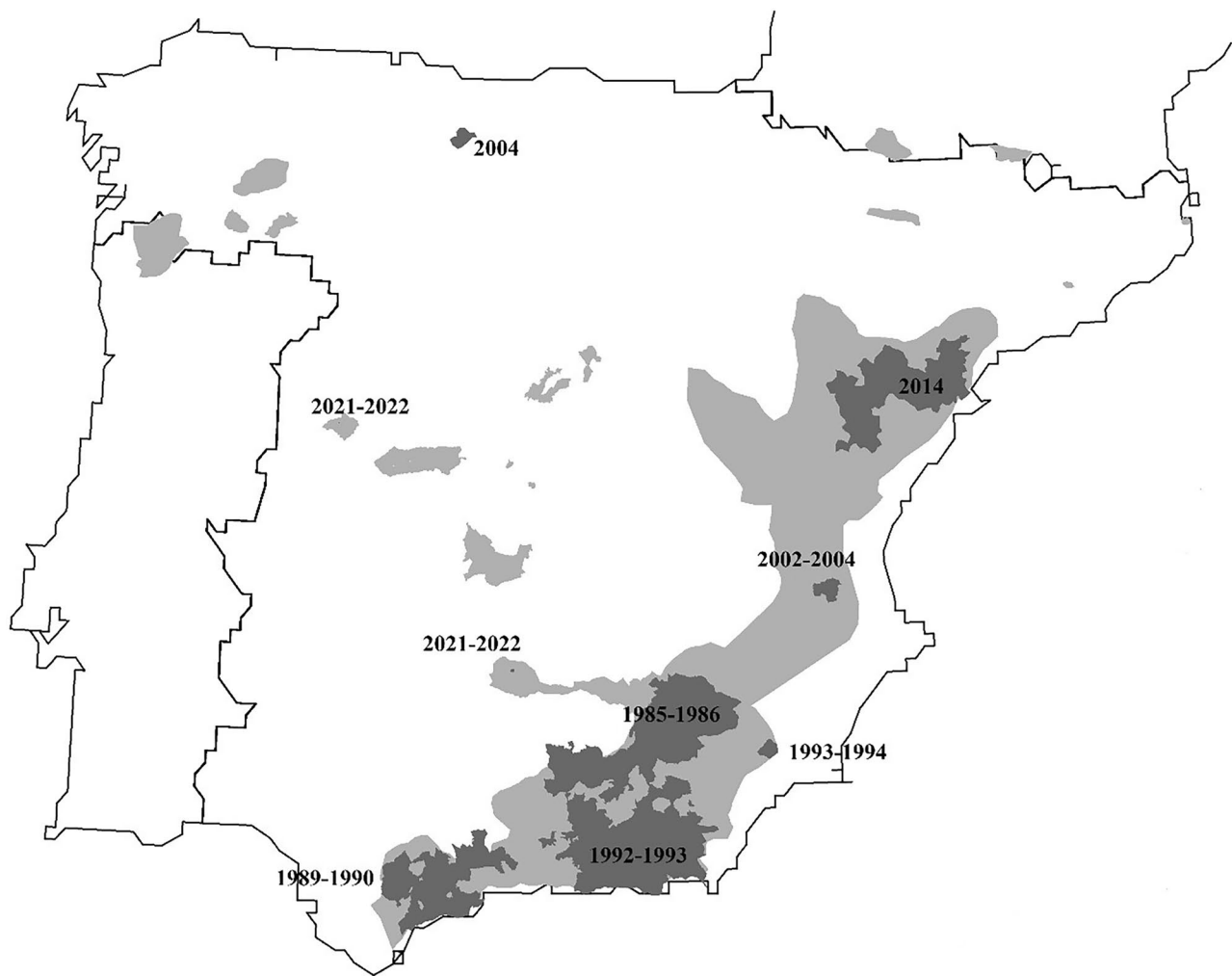


Fig. 3 Distribution of Iberian ibex populations not affected (light grey) and affected (dark grey) by sarcoptic mange at a municipality scale, indicating the year(s) of the first description or initial outbreak of sarcoptic mange in each affected population

Management of sarcoptic mange in Iberian ibex populations

The management of sarcoptic mange in wild Caprinae populations has been recently revised (Espinosa et al. 2020; Pérez et al. 2021). Briefly, potential measures include (1) preventing the entry of a disease in a naïve population; (2) eradicating a disease already present in a population; (3) controlling a disease present in a population, maintaining low prevalence but without eradicating it; or (4) not acting (Wobeser 1994, 2002; Espinosa et al. 2020). Any wildlife disease management, however, must be integrated with a comprehensive holistic management of the ecosystem (Aguirre et al. 1995).

1. Since domestic livestock is the origin of most of the outbreaks of sarcoptic mange in Iberian ibex (Lavín et al. 2000a; Moroni et al. 2021), controlling sarcoptic mange in sympatric small ruminant flocks seems therefore a key to control the entry of *S. scabiei* in naïve Iberian ibex populations.
2. Eradication of *S. scabiei* is deemed impossible and unfeasible even in human populations, where known treatments exist and all the individuals can be treated (Falk 1982; Arlian 1989). However, Iberian ibex depopulation has been proposed to eradicate sarcoptic mange in this species (Arenas, et al. 2002, 2009a, b), although it is against all odds and the minimum essential requirements of an integrated ecosystem management of wildlife diseases (Aguirre et al. 1995; Espinosa et al. 2020). Moreover, even if complete Iberian ibex depopulation was achieved, other sympatric mammal hosts, either domestic or wild, could maintain the mite, acting as a reservoir until an eventual repopulation (natural or anthropic) by Iberian ibex.
3. Ivermectin is an antiparasitic macrocyclic lactone traditionally used to control sarcoptic mange in domestic animals (Ibrahim and Abu-Samra 1987; Geary 2005), which has also been parenterally used to deworm wildlife species and boost the immune system (López-Olvera et al.



Fig. 4 Male Iberian ibex captured and GPS-collared in Sierra Nevada Natural Space and monitored for more than 2 years. The disease evolved through different infestation stages, and finally, the ibex healed and completely recovered from sarcoptic mange spontaneously without treatment. Similar trends were observed in a number of individuals

2006). The successful individual treatment of sarcoptic mange in captive Iberian ibexes with parenteral injections of ivermectin (Pérez et al. 1996c; León-Vizcaíno et al. 2001; Sarasa et al. 2010) has led to the empiric mass release of ivermectin-medicated feed in natural protected areas in eastern Spain inhabited by Iberian ibex populations affected by sarcoptic mange (Sánchez-Isarria et al. 2008a, b; Valldeperes et al. 2022a), being even legally authorized in different regions within Spain, such as Andalucía (southern Spain) and Aragón (northern Spain) (Junta de Andalucía 2021; Gobierno de Aragón 2022).

However, oral administration of macrocyclic lactones to free-ranging wildlife populations through medicated feed is mostly empiric and entails unanswered concerns regarding its usefulness, efficacy, and potential risks to the target species, other wildlife, the environment, and even human public health (Rowe et al. 2019; Espinosa et al. 2020; Moroni et al. 2020; Valldeperes et al. 2022b). On-field administration of in-feed ivermectin-induced mean plasma concentrations below the therapeutic threshold was reported for other parasites and only in a proportion of Iberian ibexes, which is insufficient to decrease *S. scabiei* transmission (Nolan et al. 1985; Pound et al. 1996; Davey et al. 2010; Valldeperes et al. 2022a). Moreover, ivermectin plasma concentration decreased below 20% in 72 h after experimental administration in Iberian ibexes (Moroni et al. 2022a), further demonstrating the lack of efficacy of this measure. On the other hand, massive administration of topic

macrocyclic lactones can lead to overdosing (Old et al. 2021; Mounsey et al. 2022). Moreover, such inadequate dosage and massive release of antiparasitic drugs in the environment increase the probability of the mite generating resistance against the treatment (Tabashnik 1994; Vermunt 1996; Currie et al. 2004; Bliss et al. 2008; Terada et al. 2010; Andriantjoanirina et al. 2014), which adds to the detrimental environmental consequences for coprophagous arthropods and other non-target invertebrates (Sommer et al. 1992; Herd et al. 1996; Verdú et al. 2015, 2018).

Conversely, monitoring and exceptional individual culling because of animal welfare only in severely affected ibexes have been implemented as a conservative and minimally interventionist management measure in Iberian ibex populations affected by sarcoptic mange (Ruiz-Martínez et al. 1996; Espinosa et al. 2020; Moroni et al. 2020). Such an approach eases the eco-epidemiological transition of mange from epizootic to enzootic, through the selection and survival of resistant host and mutual adaptation of host and parasite (Granados et al. 2011). Besides, the simultaneous monitoring of population and health status (Cardoso et al. 2021; Barroso et al. 2022) allows for assessing, determining, and monitoring the prevalence and population trends over time (Espinosa et al. 2020; Granados et al. 2020; Pérez et al. 2021).

Infectious keratoconjunctivitis

Etiology

Infectious keratoconjunctivitis is a disease affecting the eyes of domestic and wild small ruminants. The causal role of keratoconjunctivitis has been attributed to a number of bacteria, including *Corynebacterium pyogenes*, *Escherichia coli*, *Chlamydia psittaci*, *Ch. abortus*, *Moraxella bovoculi*, *Moraxella (Branhamella) ovis* (formerly named *Neisseria ovis*), *Listeria monocytogenes*, *Mycoplasma* other than *M. conjunctivae* (including *M. agalactiae*), *Staphylococcus aureus*, or *Rickettsia*-like spp. (Bijlenga et al. 1983; Blanco et al. 1982; Egwu et al. 1989; Dagnall 1994a, b; Rodríguez et al. 1996; González-Candela et al. 2007; Verbisck-Bucker et al. 2008; Verbisck et al. 2010; Holzwarth et al. 2011; Arnal et al. 2013; Osman et al. 2013; Dickey et al. 2016). However, evidences have finally identified that infectious keratoconjunctivitis is related to the infection by virulent strains of *M. conjunctivae* (Nicolet and Freundt 1975; Giacometti et al. 1998, 1999; Zimmermann et al. 2008), although *M. conjunctivae* and *M. agalactiae* have been pointed out indistinctively as etiological agents in the past since both were phylogenetically classified together (Rodríguez et al. 1996; González-Candela et al. 2007; León-Vizcaíno et al. 2008c; Verbisck-Bucker et al. 2008; Verbisck et al. 2010). Initially, *M. conjunctivae* infection was believed to always cause clinical disease in wild mountain ungulate populations (Giacometti et al. 1998, 1999, 2002a, b), but later studies

showed that *M. conjunctivae* can be carried out asymptotically by these species (Ryser-Degiorgis et al. 2009; Mavrot et al. 2012; Fernández-Aguilar et al. 2017a, b). Nevertheless, the role of *Chlamydiaceae* in infectious keratoconjunctivitis of wild free-ranging mountain ungulate populations is still in discussion (Holzwarth et al. 2011; Arnal et al. 2013; Dias-Alves et al. 2021).

Symptomatology

Clinical signs of infectious keratoconjunctivitis include blepharospasm, conjunctivitis, epiphora, varying degrees of corneal opacity and ulceration, ocular damage, and inflammation, which cause visual impairment and blindness (Mayer et al. 1997). The disease is usually transient, and the infection commonly courses to spontaneous clinical recovery, although clinical signs may progress to staphyloma and corneal perforation (Giacometti et al. 1998; Fernández-Aguilar et al. 2017a, b, c) (Fig. 5).

Diagnosis

In the past, the study of infectious keratoconjunctivitis was limited by the performance of traditional culture techniques, not only in wildlife but also in domestic animals, due to the difficulty to culture and isolate *M. conjunctivae* (Nicolet and Freundt 1975; Giacometti et al. 1998, 1999). However, the development of molecular techniques, namely, PCR, allowing the identification, characterization, and sequencing of *M. conjunctivae* has allowed not only to certify the central role of this pathogen in the etiology of infectious keratoconjunctivitis, but also to diagnose this disease in infected individuals and to understand the relationship between *M. conjunctivae* strains and disease (Vilei et al. 2007; Fernández-Aguilar. 2017a, b, c; Yang et al. 2022). Additionally, serological tests detecting antibodies both in serum and in lachrymal against *M. conjunctivae* allow retrospective epidemiological studies in wild free-ranging mountain ungulates populations (Belloy et al. 2001).

Epidemiology

Mycoplasma conjunctivae is transmitted through direct contact and by flies, which act as mechanical vectors (Degiorgis et al. 1999; Giacometti et al. 2002a; Fernández-Aguilar et al. 2019), allowing infectious keratoconjunctivitis to spread at a speed estimated over 15 km/year (Degiorgis et al. 2000). This disease is characterized by a relatively high morbidity with a low mortality ranging from 5% up to 27%, mostly due to starvation or falls in the steep mountain environment inhabited by wild caprines during the blindness stage of the disease (Loison et al. 1996; Degiorgis et al. 2000; Giacometti et al. 2002a). Mountain ungulate populations can be demographically affected both by keratoconjunctivitis epidemics and the associated culling management to try to reduce density to decrease *M. conjunctivae* transmission, but populations usually recover in 5 years after the outbreak (Gauthier 1991; Loison et al. 1996). Clinical infectious keratoconjunctivitis follows a seasonal pattern, with more cases in summer due to the increase of susceptible host densities, because of the birth of naïve kids and the higher abundance of insect vectors of *M. conjunctivae*. Although the morbidity is lower in winter, the relative mortality is higher due to the more adverse environmental conditions (Rossi et al. 2019). Small domestic ruminants, mainly sheep, were traditionally assumed as the main reservoir of *M. conjunctivae*, and wild mountain caprines were considered spillover hosts that could not maintain infectious keratoconjunctivitis without the participation of domestic hosts (Giacometti et al. 2002a, b; Fernández-Aguilar et al. 2013, 2017c; Rossi et al. 2019). However, separate independent epidemiological cycles in domestic and wild ruminants and the capability of wild mountain ungulate populations to maintain *M. conjunctivae* circulation without the participation of domestic hosts have been demonstrated later (Ryser-Degiorgis et al. 2009; Fernández-Aguilar et al. 2017a, b).

Fig. 5 Free-ranging Iberian ibex kid from Sierra Nevada Natural Space with mild conjunctivitis in the right eye consistent with infectious keratoconjunctivitis. Different clinical stages of infectious keratoconjunctivitis caused by *Mycoplasma conjunctivae* in Iberian ibexes kept in captivity in Sierra Nevada (Espinosa et al. 2017c; Fernández-Aguilar et al. 2017b)



Infectious keratoconjunctivitis in Iberian ibex populations

In Iberian ibex, *M. conjunctivae* has been reported in association with sporadic cases of keratoconjunctivitis (Antón et al. 1999; Cubero et al. 2002; Arnal et al. 2009; Revilla Calavia 2012), outbreaks in free-ranging and captive populations (León-Vizcaíno et al. 2008c; Fernández-Aguilar et al. 2017b), and endemicity in free-ranging populations (Ramírez-Rosales 2018) (Fig. 5, Table 1). While prevalences can be low in unaffected Iberian ibex populations, without the presence of *M. conjunctivae* in asymptomatic individuals (León-Vizcaíno et al. 2008c; Revilla Calavia 2012; Fernández-Aguilar et al. 2017b), they can rise during epizootics and reach even higher enzootic values after the epizootic, turning to asymptomatic as in domestic small ruminant flocks (Fernández-Aguilar et al. 2013, 2017b, c; Ramírez-Rosales 2018) (Table 1). The 1-year evolution from an outbreak with severe clinical signs to an asymptomatic endemic status in a captive Iberian ibex population (Fernández-Aguilar et al. 2017b) suggests that at least certain outbreaks can be related to the exposure of populations to new virulent strains of *M. conjunctivae*, until the relationship between the pathogen and the host ibex population evolves to an endemic balance situation. This finding is consistent with the higher prevalence of *M. conjunctivae* described in young individuals, which later achieve to eliminate or control the infection as they develop an efficient immune response with increasing age and exposure to the infectious agent (Giacometti et al. 2002a, b; González-Candela et al. 2006, 2007; León-Vizcaíno et al. 2008c; Fernández-Aguilar et al. 2017a, b, c).

Management of infectious keratoconjunctivitis

Targeted health surveillance for *M. conjunctivae* in transhumant domestic small ruminant flocks (Lawson et al. 2021) should help to prevent the introduction of new virulent strains of *M. conjunctivae* in Iberian ibex populations, although this will not prevent the circulation of the strains already endemically maintained in the wildlife populations (Fernández-Aguilar et al. 2013, 2017a, c; Rossi et al. 2019).

Caseous lymphadenitis

Etiology

Caseous lymphadenitis is a chronic infectious disease caused by the bacterium *Corynebacterium pseudotuberculosis*, affecting domestic and wild small ruminants (Dorella et al. 2006; Domenis et al. 2018).

Pathogenesis and symptomatology

This disease is characterized by caseous lesions most frequently affecting the superficial lymph nodes, which can

open through fistulae through the skin and leak their necrotic-purulent content (Fig. 6). The lesions may also affect parenchymal organs, and then, the disease can often be fatal, with progressive cachexia, weakness, and death (Baird and Fontaine 2007; Domenis et al. 2018).

Diagnosis

The diagnosis is based on compatible clinical signs and lesions and is further confirmed by bacteriological culture and identification or PCR from the purulent exudates (Colom-Cadena et al. 2014; Espinosa et al. 2017c). Antibodies against *C. pseudotuberculosis* can also be investigated through ELISA tests, allowing retrospective epidemiological studies at the population scale (Solana et al. 2011; Colom-Cadena et al. 2014; Varela-Castro et al. 2017).

Caseous lymphadenitis in Iberian ibex

Corynebacterium pseudotuberculosis has been reported in Iberian ibex, both endemically in free-ranging populations and associated with disease outbreaks with mortality due to visceral forms in captive populations (González-Candela et al. 2006; León-Vizcaíno et al. 2008b; Colom-Cadena et al. 2014; Varela-Castro et al. 2017) (Fig. 6, Table 1), but there is a lack of knowledge on the potential demographic effects of this disease on the populations of this species. Although domestic livestock has been suspected as the origin of caseous lymphadenitis in the affected Iberian ibex populations, once the interspecific transmission has occurred, *C. pseudotuberculosis* can circulate and probably be maintained by Iberian ibex alone, both in captive and free-ranging populations (Colom-Cadena et al. 2014; Varela-Castro et al. 2017). Captivity seems to enhance the transmission of *C. pseudotuberculosis* and the severity of the clinical signs due to increased pathogen circulation, increased risk of penetrating wounds caused by the facilities or in intraspecific fights, and immunosuppression induced by prolonged captivity-related stress (Colom-Cadena et al. 2014; Espinosa et al. 2017c). Although endemic caseous lymphadenitis probably has little relevance in Iberian ibex free-ranging populations, it can hinder the management of captive populations or in intensive game estates aimed at conservation actions or game resource exploitation, respectively (Granados et al. 1996b; Colom-Cadena et al. 2014; Espinosa et al. 2017c).

Management of caseous lymphadenitis in Iberian ibex populations

In captivity, individual treatment of the affected ibexes through aspiration, cleaning, and disinfection of the purulent material and fistulae and administration of systemic antibiotic, combined with autovaccination using the strains

Table 1 Prevalences and 95% central confidence intervals reported for *Mycoplasma conjunctivae*, *Corynebacterium pseudotuberculosis*, *Oestrus caucasicus*, and *Babesia ovis* in Iberian ibex

Reference	Prevalence	95% central CI (%)	Sample	Technique	Comments
<i>Infectious keratoconjunctivitis (Mycoplasma conjunctivae)</i>					
Antón et al. (1999)	0.4%			Culture	No further data available in the reference
Cubero et al. (2002)	0.4% (2/450)	0.0–1.1	Serum	CFT	
González-Candela et al. (2006, 2007)	14.3% (46/321)	10.5–18.2	Conjunctive/ear swabs	Culture	<i>Mycoplasma agalactiae</i>
León Vizcaíno et al. (2008c)	0.8% (2/259)	0.0–1.8	Conjunctive swabs	Culture	
	0.48% (2/415)	0.0–1.1	Serum	ELISA	
Arnal et al. (2009)	27.8% (5/18)	7.1–48.5	Conjunctive swabs	PCR	All the ibexes sampled had clinical signs
Revilla Calavia (2012)	3.6% (7/196)	1.0–6.2	Conjunctive swabs	PCR	29/196 of the ibexes sampled had clinical signs
	24.1% (7/29)	8.6–39.7			All the ibexes sampled had clinical signs
	0.0% (0/167)	0.0–0.0			None of the ibexes sampled had clinical signs
Fernández-Aguilar et al. (2017b)	35.4% (17/48)	23.4–49.6	Conjunctive swabs	PCR	Epizootic in a captive population
	8.7% (12/46)	3.4–20.3			Post-epizootic decrease in a captive population
	4.3% (2/46)	1.2–14.5			Post-epizootic decrease in a captive population
	75.3% (52/69)	64.0–84.0			Asymptomatic enzootic in a captive population
	68.7% (33/48)	54.7–80.0	Serum	ELISA	Epizootic in a captive population
	54.3% (25/46)	40.2–67.8			Post-epizootic decrease in a captive population
	46.5% (20/43)	32.5–61.1			Post-epizootic decrease in a captive population
38.5% (10/26)	23.4–59.3			Asymptomatic enzootic in a captive population	
Ramírez-Rosales (2018)	17.7% (26/147)	11.9–24.8	Conjunctive swabs	PCR	Enzootic in a free-ranging population
<i>Caseous lymphadenitis (Corynebacterium pseudotuberculosis)</i>					
González-Candela et al. (2006)	3.1% (10/321)	1.2–5.0	Conjunctive, nasal, and vaginal swabs	Culture	<i>Corynebacterium</i> sp.
León Vizcaíno et al. (2008b)	2.9% (1/35)	0.0–8.4	Serum	ELISA	
Colom-Cadena et al. (2014)	0.0% (0/18)	0.0–0.0	Inspection	Lesions	Initial entry at an enclosure from the wild
	68.8% (11/16)	46.0–91.5			Epizootic after less than 1 year in captivity
	5.6% (1/18)	0.0–16.1	Serum	ELISA	Initial entry at an enclosure from the wild
85.7% (12/14)	67.4–100.0			Epizootic after less than 1 year in captivity	
Varela-Castro et al. (2017)	18.9% (68/360)	14.8–22.9	Serum	ELISA	Enzootic in a free-ranging population
<i>Oestrus caucasicus</i>					
Pérez et al. (1996a, b)	73.9% (133/180)	67.5–80.3	Head	Sinus inspection	
Pérez et al. (1997b)	67.1% (271/404)	62.5–71.7	Head	Sinus inspection	
Antón et al. (2002)	59.0% (343/581)	55.0–63.0	Head	Sinus inspection	

Table 1 (continued)

Reference	Prevalence	95% central CI (%)	Sample	Technique	Comments
Calero-Bernal et al. (2020)	9.5% (4/42)	0.6–18.4	Serum	ELISA	Antibodies against <i>Oestrus</i> sp.
<i>Babesia ovis</i>					
Ferrer et al. (1998)	32.6% (155/475)	28.4–36.8	Serum	IFAT	
Antón et al. (2002)	59.8% (73/122)	51.1–68.5	Serum	IFAT	
	0.0% (0/110)	0.0–0.0	Blood smear	Microscopic inspection	
Calero-Bernal et al. (2020)	43.4% (56/129)	34.9–52.0	Serum	IFAT	

CFT complement fixation test, CI confidence interval, ELISA enzyme-linked immunoassay, IFAT indirect fluorescent antibody test, PCR polymerase chain reaction

isolated in the population, have been recommended and have apparently successfully controlled outbreaks (Colom-Cadena et al. 2014; Espinosa et al. 2017c). Since the epidemiological knowledge of *C. pseudotuberculosis* in Iberian ibex is still limited, no specific management recommendations exist for the management of caseous lymphadenitis in free-ranging Iberian ibex populations, apart from identifying the epidemiological status of the population and the potential domestic and wild reservoirs participating in the circulation and maintenance of the pathogen (Varela-Castro et al. 2017).

Parasitic diseases

Most of the parasites identified in Iberian ibex are shared with domestic livestock (Rossi et al. 1994; Pérez et al. 1996c) and are not related to clinical disease (Calero-Bernal et al. 2020). However, some parasites are exclusive or at least more prevalent in wild ungulates and specifically in Iberian ibex

than in domestic animals. This seems to be the case for the larvae of the Diptera *Oestrus* spp., with prevalences above 87% in the Iberian ibex population in Sierra Nevada, usually parasitizing nasal, sinus, and horn cavities (Ruiz-Martínez et al. 1992; Granados et al. 1996a; Pérez et al. 1996b, 1997b; Antón et al. 2002) (Table 1). Another parasite apparently common and frequently reported in Iberian ibex populations is the intracellular protozoan *Babesia ovis*. Not only a contact with this parasite has been reported in Iberian ibex through serology (Ferrer et al. 1998; Calero-Bernal et al. 2020) (Table 1), but mortality related to babesiosis has also been described in a Mediterranean Iberian ibex population (Marco et al. 2000). In this same population, the gastrointestinal nematode *Haemonchus contortus* also was reported to cause mortality in Iberian ibex, apparently related to a combination of high host population density with environmental conditions that favored the parasite (Lavín et al. 1997).

Diseases under targeted surveillance in the Iberian ibex

Apart from the sarcoptic mange, the Spanish national wildlife health surveillance program includes brucellosis among the diseases subjected to targeted health surveillance (Lawson et al. 2021; Gobierno de España et al. 2022). Additionally, to move Iberian ibex among game estates and/or natural areas, the Spanish legislation requires performing specific diagnostic tests for tuberculosis and bluetongue, as well as for sarcoptic mange and brucellosis as aforementioned (Gobierno de España et al. 2009). Although an impact of brucellosis, tuberculosis, and bluetongue on Iberian ibex population dynamics has not been reported, brucellosis and tuberculosis are zoonotic diseases shared with livestock subjected to eradication programs (Gobierno de España et al. 1996; Gobierno de España 2003), and bluetongue is a notifiable animal disease (Gobierno de España et al. 2014), which motivates the targeted surveillance of these three diseases for Iberian ibex movements in Spain (Gobierno de España et al. 2009; Lawson et al. 2021).

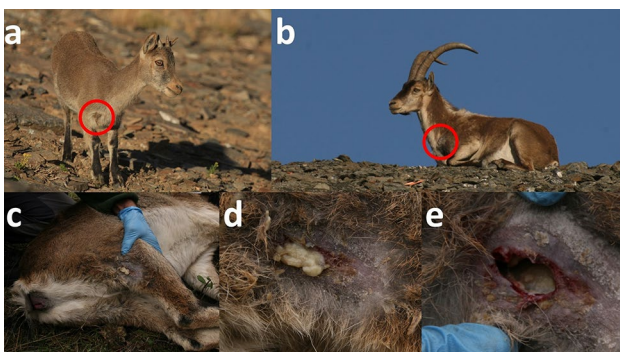


Fig. 6 Free-ranging Iberian ibex kid (a) and adult male (b) from Sierra Nevada with apparently draining prescapular lymph node fistulae, compatible with *Corynebacterium pseudotuberculosis* infection. c–e Fistulized popliteal lymph node of a female Iberian ibex kept in captivity at the Ports de Tortosa i Beseit National Game Reserve enclosure. The presence of *C. pseudotuberculosis* was confirmed through bacterial culture and microbiological characterization (Colom-Cadena et al. 2014; Espinosa et al. 2017c)

Brucellosis

Brucellosis is a zoonotic disease caused by the bacterium *Brucella melitensis* and *B. abortus*, which can affect domestic and wild animals and humans (Corbel 1997; Seleem et al. 2010). Despite being included in the targeted health surveillance of Iberian ibex (Gobierno de España et al. 2009, 2022), a single clinical case with isolation of *B. melitensis* biovar 1 (Muñoz et al. 2010) has been reported, and the seroprevalences detected in this species range from 0 to 2.6% depending on the diagnostic test used. This suggests that Iberian ibex is not a reservoir for brucellosis but a spillover accidental host (Antón et al. 1999; León-Vizcaíno et al. 2008a; Muñoz et al. 2010; Astorga-Márquez et al. 2014; Junta de Andalucía 2015; Calero-Bernal et al. 2020; Gómez-Guillamón et al. 2020) (Table 2). Nevertheless, the isolation of *B. melitensis* in the closely related Alpine ibex (*Capra ibex*) was first reported almost 25 years ago (Ferroglio et al. 1998), and this species has been described as the first wild ungulate species maintaining and possibly acting as a reservoir for brucellosis in the last decade, causing serious concern because of spillback to domestic cattle (Hars et al. 2013, 2015; Rossi et al. 2019). Since the causes for the new reservoir role for brucellosis in this species and the management of this disease are still unclear and generate concern and conflict (Lambert et al. 2020, 2021, 2022), keeping brucellosis surveillance and preventing the entry of this disease in Iberian ibex populations are warranted.

Tuberculosis

Tuberculosis is another zoonosis in the wildlife-livestock-human interface, caused by bacteria of the *Mycobacterium tuberculosis* complex (MTC) (Desta et al. 2022). A single clinical case of apparent clinical tuberculosis attributed to *Mycobacterium bovis* affecting the lung and liver in a female Iberian ibex has been reported out of a sample size of 450 (0.2%), although the confirmation through microbiological culture diagnostic techniques was not specified. This same study did not achieve to identify *M. bovis* through immunofluorescence in the lungs and lymph nodes of 175 Iberian ibexes (Cubero et al. 2002). Antibodies against MTC have been detected in Iberian ibex with seroprevalences up to 14.6% (Revilla Calavia 2012; Ruiz-Rodríguez 2018; Calero-Bernal et al. 2020) (Table 2). However, clinical cases of tuberculosis-like lesions confirmed through microbiological culture have not been described in the available literature or official reports, not even in areas with a known circulation of MTC in the wildlife-livestock interface and with apparent high infection pressure (León Vizcaíno et al. 2008b; Mentaberre et al. 2010, 2014; García-Bocanegra et al. 2012a;

Revilla Calavia 2012) (Table 2). Hence, resistance against tuberculosis, either behavioral, immunological, and/or ecological, has been suggested for Iberian ibex (Mentaberre et al. 2010). Experimental studies including the challenge of Iberian ibex with MTC under controlled conditions should be carried out in order to elucidate whether this apparent resistance of Iberian ibex exists or not and whether it is related to ecological, behavioral, and/or immunological factors in case of existing. The results of such research should consequently justify the need to continue targeted surveillance of tuberculosis in this species or, conversely, allow the elimination of tuberculosis from the list of diseases to monitor and control in Iberian ibex.

Bluetongue

Bluetongue is a disease caused by different serotypes of orbivirus, mainly transmitted by vector midges of the genus *Culicoides* (Mellor and Wittmann 2002; Mertens et al. 2004). This disease can affect domestic and wild ruminants and camelids and is a notifiable disease included in the health surveillance and eradication programs of the European Union (Council Directive 2000/75/EC). Consequently, bluetongue has been added to the diseases under surveillance previously to Iberian ibex translocations according to the specific Spanish legislation (Gobierno de España et al. 2009). Experimental infection has demonstrated that Iberian ibex is susceptible to bluetongue virus infection, albeit subclinically (Lorca-Oró et al. 2012), and seroprevalences against bluetongue virus ranging from 3.4 to 11.1% have been reported in Iberian ibex free-ranging populations without associated clinical signs (García et al. 2009; Lorca-Oró et al. 2011; Astorga-Márquez et al. 2014; Lorca-Oró et al. 2014; Junta de Andalucía 2015; Gómez-Guillamón et al. 2020) (Table 2). Nevertheless, in 2018 the circulation of bluetongue virus serotype 4 in domestic ruminants was associated with an outbreak of mortality in sympatric Iberian ibexes (Gómez-Guillamón et al. 2021). The change in the epidemiological consideration of Iberian ibex with regard to bluetongue virus from susceptible asymptomatic host to clinical host where mortality can occur warrants further monitoring and targeting this disease in the health surveillance of this species.

In summary, except for sarcoptic mange, no significant epidemiological impact or demographic effect has been reported up to date for the remaining diseases under targeted health surveillance in Iberian ibex (brucellosis, tuberculosis, and bluetongue). Hence, the reason to monitor and survey these three diseases in Iberian ibex is rather their relevance in domestic livestock, where they are included in eradication programs, and the risk for zoonosis and transmission among

Table 2 Prevalences and 95% central confidence intervals reported for brucellosis, tuberculosis, and bluetongue in Iberian ibex

Reference	Prevalence	95% central CI (%)	Sample	Technique
Brucellosis (<i>Brucella melitensis</i> and <i>B. abortus</i>)				
Antón et al. (1999)*	1.0%			Culture
Cubero et al. (2002)	0.9% (4/450)	0.0–1.8	Serum	RBT, CFT
León Vizcaíno et al. (2008a)	1.0% (6/598)	0.2–1.8	Serum, lymph node, spleen, vaginal fluid	Culture, PCR, RBT, CFT, ELISA
Muñoz et al. (2010)	0.3% (3/1086)	0.0–0.6	Serum	ELISA
Revilla Calavia (2012)	0.0% (0/1474)	0.0–0.0	Serum	ELISA
Astorga Márquez et al. (2014)	0.0% (0/214)	0.0–0.0	Serum	RBT, CFT
Junta de Andalucía (2015)	2.6% (15/571)	1.3–3.9	Serum	RBT
	0.3% (2/585)	0.0–0.8		CFT
Calero-Bernal et al. (2020)	0.0% (0/50)	0.0–0.0	Serum	RBT, CFT, AGIDT
	0.0% (0/50)	0.0–0.0	Genital mucosa	Culture
Gómez-Guillamón et al. (2020)	2.5% (2/549)	1.2–3.8	Serum	RBT
	0.4% (2/564)	0.0–0.8		CFT
Tuberculosis (<i>Mycobacterium tuberculosis</i> complex)				
Cubero et al. (2002)	0.0% (0/175)	0.0–0.0	Lung, lymph node	Immunofluorescence
León Vizcaíno et al. (2008b)	0.0% (0/35)	0.0–0.0	Carcass	ELISA, lesions, culture
Mentaberre et al. (2010)	0.0% (0/205)	0.0–0.0	Carcass	Lesions
Revilla Calavia (2012)	1.5% (10/648)	0.6–2.5	Serum	ELISA
	0.0% (0/150)	0.0–0.0	Carcass	Necropsy, culture, Ziehl–Neelsen
García-Bocanegra et al. (2012a)	0.0% (0/460)	0.0–0.0	Serum	ELISA
Mentaberre et al. (2014)	0.0% (0/355)	0.0–0.0	Carcass	Lesions
Ruiz-Rodríguez (2018)	14.6% (35/239)	10.2–19.1	Serum	ELISA
Calero-Bernal et al. (2020)	6.0% (3/50)	0.0–12.6	Serum	ELISA
	0.0% (0/50)	0.0–0.0	Lung, mediastinal lymph nodes	Culture
González-Insa (2021)	7.9% (3/38)	0.0–16.5	Serum	ELISA
Bluetongue virus				
García et al. (2009)	10.8% (9/83)	0.0–32.4	Serum	ELISA
Lorca-Oró et al. (2011)	4.0% (31/770)	2.6–5.4	Serum	ELISA
	0.0% (0/380)	0.0–0.0	Blood	PCR
	2.9% (1/34)	0.0–8.6	Spleen	PCR
Revilla Calavia (2012)	0.3% (2/722)	0.0–0.7	Serum	ELISA
Astorga Márquez et al. (2014)	1.9% (4/214)	0.1–3.7	Serum	ELISA
Lorca-Oró et al. (2014)	11.1% (4/36)	0.8–21.4	Serum	ELISA
Junta de Andalucía (2015)	3.4% (19/559)	1.9–4.9	Serum	ELISA
Gómez-Guillamón et al. (2020)	3.3% (18/538)	1.8–4.9	Serum	ELISA

AGID agar gel immunodiffusion test, CFT complement fixation test, ELISA enzyme-linked immunoassay, PCR polymerase chain reaction, RBT Rose Bengal test

*No further data available in this reference

domestic animals and wildlife from a One Health approach (Gortázar et al. 2007, 2016; Espinosa et al. 2017c; Rossi et al. 2019).

Other diseases

Diseases not included in the targeted health surveillance of Iberian ibex and without known demographic effects have nonetheless been investigated in the populations of this species.

Paratuberculosis

Paratuberculosis is an intestinal chronic wasting disease affecting ruminants, caused by the facultative intracellular pathogen *Mycobacterium avium* subspecies *paratuberculosis* (MAP) (Windsor 2015). MAP is considered endemic in Spain (Fanelli et al. 2020), where antibodies against MAP have been detected in wild ungulates (Reyes-García et al. 2008; López-Olvera et al. 2009; Falconi et al. 2010).

Although the low prevalences generally found suggest that wild ungulates are not a reservoir for MAP (Carta et al. 2012, 2013), paratuberculosis outbreaks with associated mortality have been reported in naïve wild ungulate populations including Alpine ibex, but not in Iberian ibex (Marco et al. 2002; Ferroglio et al. 2000). Antibodies against MAP have been reported in this species with prevalences ranging from 0% up to 4.4% (Revilla Calavia 2012; Astorga-Márquez et al. 2014; Pizzato 2017; Ruiz-Rodríguez 2018; Calero-Bernal et al. 2020; Gómez-Guillamón et al. 2020) (Table 3). The spatial analyses of the seroprevalences obtained have pointed out domestic livestock as a risk factor for positivity in Iberian ibex, suggesting that this species is rather a spillover or dead-end host than a reservoir for MAP (Pizzato 2017; Ruiz-Rodríguez 2018). However, the detection of MAP by PCR in the ileocecal valve of 22% of the Iberian ibexes analyzed compared to the lower seroprevalence of 4.4% in the same population (Pizzato 2017) suggests that MAP carriage in Iberian ibexes could be underestimated when assessed through serological studies. Apart from the higher sensitivity of ileocecal valve PCR to diagnose MAP infection as compared to serum ELISA analysis in Iberian ibex (Pizzato 2017), these results raise a concern about a potential hidden role of this species in the epidemiology of MAP.

Crimean-Congo hemorrhagic fever

Crimean-Congo hemorrhagic fever is a disease caused by a Crimean-Congo hemorrhagic fever virus (CCHFV), a tick-transmitted orthonairovirus. It is a zoonotic disease that can cause potentially lethal systemic hemorrhagic disease in humans, with a mortality rate ranging between 3 and 30% of the humans infected (Ergonul 2012; Bente et al. 2013). Domestic and wild animals can be subclinically infected but are infectious for ticks feeding from them (Spengler et al. 2016). Autochthonous human clinical cases with associated mortality have been recently reported in the Iberian Peninsula (Negredo et al. 2017, 2021a, b), although it is yet unclear whether the virus was already present or its distribution area has lately spread (Spengler and Bente 2017). Ticks belonging to the genus *Hyalomma* spp. were traditionally considered the main vector of CCHFV (Spengler et al. 2016), but different CCHFV strains have been recently identified in Spain in multiple tick species of different genera obtained from the environment and domestic and wild animals (Moraga-Fernández et al. 2021; Sánchez-Seco et al. 2022), widening the epidemiological scenario of CCHFV transmission. Seroprevalences of antibodies against CCHFV reaching up to 100% have been detected in Iberian ibex Mediterranean populations, suggesting that CCHFV is endemic in the region at least since 2010, with a clustered distribution associated with high densities of bovine livestock (Espunyes et al. 2021; Carrera-Faja et al. 2022) (Table 3). Although

CCHFV has not been detected in Iberian ibex nor in ticks carried by this species, the high seroprevalences reported warrant further research on the potential role of this species as a CCHFV reservoir and/or mechanical spreader of CCHFV-infected ticks, to assess the potential zoonotic risk.

Abortive agents

A number of abortive agents can cause congenital perinatal mortality in wild ruminants. In Iberian ibex, the presence and/or contact with the abortive agents *Chlamydophila* spp., *Coxiella burnetii* (etiological agent of Q fever), *Leptospira pomona*, *Mycoplasma agalactiae*, *M. arginine* and *M. mycoides* subspecies *mycoides* (etiological agents of contagious agalactia), *Neospora caninum*, pestivirus (etiological agent of border disease), *Salmonella abortusovis*, Schmallenberg virus, and *Toxoplasma gondii* has been investigated and/or reported (Almería et al. 2007; González-Candela et al. 2007; León-Vizcaíno et al. 2008d; García-Bocanegra et al. 2012b; Astorga-Márquez et al. 2014; Junta de Andalucía 2015; Cano-Manuel 2017; Ruiz-Rodríguez 2018; Varela-Castro et al. 2018; Calero-Bernal et al. 2020; Gómez-Guillamón et al. 2020; Almería et al. 2021; González-Insa 2021; Jiménez-Ruiz et al. 2021) (Table 3). Although undoubtedly all these agents can affect population dynamics by decreasing fertility, birth rate, and kid survival, the demographic impact of these pathogens has not been studied nor reported in Iberian ibex populations. Moreover, if Iberian ibex populations are capable of maintaining the circulation of these pathogens as a reservoir, this may also suppose a risk and concern for sympatric domestic livestock.

The clinical outcomes and prevalences reported vary from failure to detect and/or identify the agent to high prevalences, so no consistent trend can be identified for abortive pathogens in Iberian ibex (Table 3). The prevalences reported probably depend on the particular agent and population studied; the objective of the diagnosis (contact through antibodies or identification of the etiological agent), the specific diagnostic methodology used, the specific ecosystem and environment inhabited by each ibex population studied, and the contact with and pressure by domestic livestock, among other factors. It is therefore difficult to establish a role as a reservoir or spillover host for Iberian ibex with regard to these pathogens, as well as the aforementioned effect on population demography and dynamics. However, since these diseases are shared with domestic livestock and some of them have zoonotic potential, increasing health surveillance at the interface between domestic and wild animals, including Iberian ibex, is warranted, as well as performing further specific studies aimed at elucidating the demographic effect of these infections in Iberian ibex population dynamics and the potential risk for domestic livestock.

Table 3 Prevalences and 95% central confidence intervals reported for paratuberculosis, Crimean-Congo hemorrhagic fever virus, and abortive agents in Iberian ibex

Reference	Prevalence	95% central CI (%)	Sample	Technique	Comments
Paratuberculosis (<i>Mycobacterium avium</i> subsp. <i>paratuberculosis</i>)					
Cubero et al. (2002)	0.0% (0/5)	0.0–0.0	Intestine and lymph node	IF	
Revilla Calavia (2012)	1.1% (7/652)	0.3–1.9	Serum	ELISA	
Astorga Márquez et al. (2014)	1.9% (4/214)	0.1–3.7	Serum	ELISA	
Pizzato (2017)	9.2% (2/46)	6.2–12.3	Serum	ELISA	
	22.0% (20/91)	13.5–30.5	Ileocecal valve	PCR	
Ruiz-Rodríguez (2018)	4.4% (12/271)	2.0–6.9	Serum	ELISA	
Calero-Bernal et al. (2020)	0.0% (0/50)	0.0–0.0	Serum	ELISA	
	0.0% (0/50)	0.0–0.0	Ileocecal valve	Culture	
Gómez-Guillamón et al. (2020)	0.5% (3/564)	0.0–1.1	Serum	ELISA	
González-Insa (2021)	2.6% (1/38)	0.0–7.7	Serum	ELISA	
Crimean-Congo hemorrhagic fever virus (CCHFV)					
Espunyes et al. (2021)	78.6% (66/84)	69.8–87.3	Serum	ELISA	An Iberian ibex free-ranging population had a 100% prevalence of antibodies against CCHFV
Carrera-Faja et al. (2022)	96.0% (121/126)	92.6–99.4	Serum	ELISA	
Abortive agents					
<i>Chlamydia</i> spp.					
Cubero et al. (2002)	13.3% (60/450)	10.2–16.5	Serum	CFT	<i>Chlamydia psittacci</i>
León Vizcaíno et al. (2008d)	13.4% (67/500)	10.4–16.4	Serum	ELISA	<i>Chlamydia abortus</i>
Astorga Márquez et al. (2014)	0.0% (0/214)	0.0–0.0	Serum	ELISA	<i>Chlamydia abortus</i>
Junta de Andalucía (2015)	0.0% (0/58)	0.0–0.0	Serum	ELISA	<i>Chlamydia abortus</i>
Varela-Castro et al. (2018)	30.0% (39/130)	22.1–37.9	Serum	ELISA	
	9.8% (11/112)	4.3–15.3	Spleen/Submandibular LN	PCR	
Calero-Bernal et al. (2020)	4.0% (2/50)	0.0–9.4	Serum	CFT	<i>Chlamydia</i> sp.
González-Insa (2021)	0.0% (0/38)	0.0–0.0	Serum	ELISA	<i>Chlamydia abortus</i>
Q fever (<i>Coxiella burnetii</i>)					
León Vizcaíno et al. (2008d)	5.4% (27/500)	3.4–7.4	Serum	CFT	
Astorga Márquez et al. (2014)	12.6% (27/214)	8.2–17.1	Serum	ELISA	
Ruiz-Rodríguez (2018)	13.4% (34/254)	9.2–17.6	Serum	ELISA	
Varela-Castro et al. (2018)	30.0% (39/130)	10.0–29.8	Serum	ELISA	
	9.8% (11/112)	7.6–27.25	Spleen/Lymph node	PCR	
Calero-Bernal et al. (2020)	10.0% (5/50)	1.7–18.3	Serum	ELISA	
González-Insa (2021)	2.6% (1/38)	0.0–7.7	Serum	ELISA	
<i>Leptospira pomona</i>					
León Vizcaíno et al. (2008d)	0.0% (0/450)	0.0–0.0	Serum	MAT	
Contagious agalactia (<i>Mycoplasma agalactiae</i> , <i>M. mycoides</i> subsp. <i>mycoides</i> , and other mycoplasmas)					
Cubero et al. (2002)	2.0% (9/450)	0.7–3.3	Serum	CFT	<i>M. agalactiae</i>

Table 3 (continued)

Reference	Prevalence	95% central CI (%)	Sample	Technique	Comments
González-Candela et al. (2007)	18.4% (59/321)	14.1–22.6	Conjunctive/ear swabs	Culture	All mycoplasmas
	14.3% (46/321)	10.5–18.2			<i>M. agalactiae</i>
	5.9% (19/321)	3.3–8.5			<i>M. arginini</i>
	0.3% (1/321)	0.0–0.9			<i>M. mycoides mycoides</i>
	6.2% (20/321)	3.6–8.9			Unidentified mycoplasmas
Verbisck-Bucker et al. (2008)	11.2% (46/411)	8.1–14.2	Conjunctive/ear swabs	Culture	<i>M. agalactiae</i>
Verbisck et al. (2010)	14.3% (5/35)	2.7–25.9	Conjunctive/ear swabs	Culture	<i>M. agalactiae</i>
	85.7% (30/35)	74.1–97.3	Serum	ELISA	
Astorga Márquez et al. (2014)	0.0% (0/214)	0.0–0.0	Serum	CFT	<i>M. mycoides mycoides</i>
	0.9% (2/214)	0.0–2.2	Serum	ELISA	<i>M. agalactiae</i>
Junta de Andalucía (2015)	5.8% (32/550)	3.9–7.8	Serum	ELISA	<i>M. agalactiae</i>
Gómez-Guillamón et al. (2020)	5.7% (30/529)	3.7–7.6	Serum	ELISA	<i>M. agalactiae</i>
<i>Neospora caninum</i>					
Almería et al. (2007)	0.0% (0/3)	0.0–0.0	Serum	ELISA	
León Vizcaíno et al. (2008d)	1.0% (5/485)	0.1–1.9	Serum	ELISA	
Calero-Bernal et al. (2020)	13.0% (14/108)	6.6–19.3	Serum	ELISA	
García-Bocanegra et al. (2012b)	5.6% (30/531)	3.7–7.6	Serum	ELISA	
	5.1% (27/531)	3.2–7.0	Serum	IFAT	
Cano-Manuel (2017)	4.8% (7/147)	1.3–8.2	Serum	ELISA	
	0.0% (0/147)	0.0–0.0	Serum	WB	
Border disease (pestivirus)					
León Vizcaíno et al. (2008d)	8.4% (42/500)	6.0–10.8	Serum	ELISA	
Astorga Márquez et al. (2014)	2.3% (5/214)	0.3–4.4	Serum	ELISA	
Junta de Andalucía (2015)	11.4% (62/545)	8.7–14.0	Serum	ELISA	
Gómez-Guillamón et al. (2020)	11.0% (58/525)	8.4–13.7	Serum	ELISA	
González-Insa (2021)	0.0% (0/38)	0.0–0.0	Serum	ELISA	
<i>Salmonella abortusovis</i>					
Cubero et al. (2002)	0.2% (1/450)	0.0–0.7	Serum	WAT	<i>S. abortusovis</i> serogroup B
León Vizcaíno et al. (2008d)	0.8% (4/500)	0.0–1.6	Serum	MAT	
Junta de Andalucía (2015)	0.4% (1/231)	0.0–1.3	Serum	ELISA	<i>Salmonella</i> sp.
<i>Toxoplasma gondii</i>					
León Vizcaíno et al. (2008d)	18.2% (91/500)	14.8–21.6	Serum	ELISA	
García-Bocanegra et al. (2012b)	27.5% (146/531)	23.7–31.3	Serum	MAT	
Cano-Manuel (2017)	11.6% (17/147)	6.4–16.7	Serum	ELISA	
	0.0% (0/147)	0.0–0.0	Serum	WB	
Calero-Bernal et al. (2020)	2.9% (4/137)	0.1–5.7	Serum	ELISA	
Almería et al. (2021)	13.9% (14/101)	7.4–20.6	Serum	MAT	

Table 3 (continued)

Reference	Prevalence	95% central CI (%)	Sample	Technique	Comments
Schmallenberg virus					
Jiménez-Ruiz et al. (2021)	19.9% (49/246)	14.9–24.9	Serum	ELISA	
González-Insa (2021)	5.3% (2/38)	0.0–12.4	Serum	ELISA	

CFT complement fixation test, ELISA enzyme-linked immunoassay, IF immunofluorescence, IFAT indirect fluorescent antibody test, LN lymph node, MAT modified agglutination test, PCR polymerase chain reaction, WAT Wright's agglutination test, WB western blot

Bacterial and viral pneumonias

Besides abortive agents, pneumonias play a relevant and long-known role in population dynamics of wild mountain ungulates, either through yearly mortality of young animals during their first winter or through mortality outbreaks in adult individuals, usually linked to the exposition to new pathogens carried by domestic animals and/or changes in environmental or climatological conditions (Foreyt and Jessup 1982; Black et al. 1988; Gonzalez and Crampe 2001; Rudolph et al. 2007; Besser et al. 2008; Ytrehus et al. 2008; Posautz et al. 2014; Kock et al. 2018). There is an extended number of potential pathogens identified in pneumonia outbreaks in wildlife, including among other bacteria such as *Bibersteinia trehalosi* (formerly known as *Pasteurella trehalosi*), *Corynebacterium pyogenes* (most likely opportunistic), *Mannheimia glucosida*, *Mannheimia haemolytica*, *Moraxella bovis*, *Mycoplasma ovipneumoniae*, *Pasteurella multocida*, other hemolytic *Pasteurellaceae* or *Mannheimia* spp. or viruses as parainfluenza-3 virus (pneumovirus), and syncytial respiratory virus (respirovirus) (Foreyt and Jessup 1982; Black et al. 1988; Lavín et al. 2000b; Rudolph et al. 2007; Besser et al. 2008; Ytrehus et al. 2008; Dassanayake et al. 2010, 2013; Posautz et al. 2014; Kock et al. 2018). However, despite the long time elapsed since the causal relationship among pathogens, disease, mortality, and demographic effects has been established, there is still controversy about the relationship among the different pathogens identified and what combinations or action sequences cause disease and mortality and which do not (Dassanayake et al. 2010, 2013). Although the impact of pneumonias on the population dynamics of other mountain ungulate species mainly by affecting recruitment is well known, this disease has not been thoroughly investigated in Iberian ibex, whose populations occupy different habitats and environments ranging from sea level to more than 3400 m above sea level (Pérez et al. 2002) and can therefore be challenged by pathogens causing pneumonia in different environmental conditions and seasons. A serological study was carried out in Iberian ibexes from southern Spain, revealing 8.1% and 1.3% seroprevalence against *P. multocida* A and *P. multocida* D, respectively (Cubero et al. 2002). Since pneumonia can cause mass mortalities leading to wiping out completely the affected populations and even leading almost

to the extinction of common and abundant species (Ytrehus et al. 2008; Kock et al. 2018), further research on the etiology, pathogenesis, and demographic effects of these respiratory processes in wild mountain ungulates and particularly in Iberian ibex is required, in order to be able to prevent future disease and mortality outbreaks and improve their management if they occur, as well as to take into account their demographic effect for population management. In captive populations, stress-related immunosuppression, overcrowding and deficient ventilation, and changes in diet favor pneumonic and septicaemic outbreaks by *M. haemolytica*, *P. multocida* and *B. trehalosi*, and paramyxovirus (Espinosa et al. 2017c).

Other infectious bacterial and viral diseases

Other pathogens have been punctually described in Iberian ibex without associated widespread distribution in the investigated population, disease outbreak, mortality, demographic effect, and/or potential risk for domestic livestock or humans (Antón et al. 1999, 2002; González-Candela et al. 2006; Revilla Calavia 2012; Calero-Bernal et al. 2020). Thus, low prevalence (1.25%) associated with domestic livestock has been described against *Escherichia coli* O157:H7, a potentially zoonotic bacterium (Navarro-González et al. 2015). *Staphylococcus* spp. has been cultivated from Iberian ibex, even with a 100% prevalence (González-Candela et al. 2006; Calero-Bernal et al. 2020), although no clear connection with pathology and population impact could be established. A new bacterium, *Streptococcus caprae* spp. nov., with phenotypic, biochemical, and phylogenetic differences with other *Streptococcus* species has been described in Iberian ibex (Vela et al. 2016). Antibodies against the Maedi-Visna virus were detected in a serosurvey in two out of 38 Iberian ibexes analyzed, accounting for a 5.3% prevalence (González-Insa 2021).

Other non-lethal parasites

Apart from the parasites described above, widespread in Iberian ibex populations and/or related to disease and mortality outbreaks (*S. scabiei*, *O. caucasicus*, *B. ovis*, and

H. contortus, see “Sarcoptic mange” and “Parasitic diseases”), more than 60 parasite species have been described in the Iberian ibex, including ectoparasites, gastrointestinal and pulmonary nematodes (with prevalences over 80%), coccidia, cestodes, trematodes, and protozoans (Rossi et al. 1994; Cano et al. 1996; Castellà et al. 1996; Pérez et al. 1996a, 2003, 2006; Antón et al. 1999, 2002; Granados et al. 2001; Refoyo et al. 2016; Calero-Bernal et al. 2020; Carrau et al. 2021a, b) (Table 4). More recently, intense tick infestations have been reported, which could increase in the future if global change provides conditions favoring their life cycle. Such intense tick burdens can affect the health and body condition of the host both per se through blood loss and by acting as vectors and/or amplifiers of other pathogens (Varela-Castro et al. 2018). The parasitic fauna of Iberian ibex forms a complex ecosystem where the different parasite species interact among them, with the host, and the environment, maintaining a dynamic balance that can lead to disease in the individual or even cause population epizootics as a result of disruptions in the system (Pérez et al. 2006).

Non-infectious diseases

Dental and skull abnormalities have been reported in Iberian ibex, both in current populations and in paleontological remnants (Vigal and Machodorm 1987; Gómez-Olivencia et al. 2011). Although anecdotal and with little impact on the population dynamics of the species, tumors have been reported in Spanish ibex. Thyroid carcinoma, cutaneous horn, pheochromocytoma, intestinal leiomyoma, and ruminal papilloma have been described in Iberian ibexes after necropsy during regular wildlife health surveillance (Arnal et al. 2006). Two gastrointestinal tumors were found in two free-ranging Iberian ibexes apparently healthy otherwise (Velarde et al. 2008), and disseminated melanoma concurrent with pheochromocytoma severely affected an old male to euthanasia (Arnal and Fernández de Luco 2017).

Diseases related to or favored by captivity

Captive Iberian ibex populations are kept in enclosures or at high density in fenced estates either for conservation purposes or for exploitation as game resource (Granados et al. 1996b; Espinosa et al. 2017c). The higher host densities associated with these conditions can favor pathogen circulation, generating a more intense infection pressure that can explain the higher prevalence and severity and even the different epidemiological nature of disease outbreaks in captive Iberian ibex populations as compared to free-ranging populations, as described for caseous lymphadenitis in the “Caseous lymphadenitis” section and for pneumonia in the “Bacterial and viral pneumonias” section (Colom-Cadena

et al. 2014; Espinosa et al. 2017c; Varela-Castro et al. 2017). Moreover, other diseases mentioned below have not been described or do not cause symptomatology in free-ranging Iberian ibex populations but have been detected and caused disease only in captive populations (Espinosa et al. 2017c).

Enterotoxemia or “pulpy kidney disease” is a disease caused by the epsilon toxins of the gram-positive bacterium *Clostridium perfringens* type D. The disease is normally related to qualitative and/or quantitative changes in diet leading to intestinal dysbiosis, favoring bacterium encapsulation and toxin production (Uzal and Kelly 1996; García et al. 2013; Espinosa et al. 2017c). Although such diet changes can also happen seasonally or because of habitat modifications in free-ranging Iberian ibex populations, this is more frequent and sudden in captive populations where diet is managed by humans, increasing the probability and severity of clostridiosis (Espinosa et al. 2017c). Quarantine and vaccination (at the entry to captivity and annually), a fiber-rich diet without sudden changes, and avoiding stress are the recommended prophylactic measures. If disease occurs in a captive Iberian ibex population, treatment should include antibiotics and the aforementioned fiber-rich diet (Uzal and Kelly 1996; García et al. 2013; Espinosa et al. 2017c).

Contagious ecthyma is a disease caused by the orf virus, included in the genus Parapoxvirus. This disease affects both domestic and wild small ruminants and is characterized by proliferative dermatitis with papules and pustules, usually affecting the mouth, lips, and nose, although the lesions can extend to the oral cavity, esophagus, abomasum, skin of the face, hooves, flanks, scrotum, perianal region, preputium, vulva, and mamma (Fig. 7). The clinical signs are more severe in kids, and the infection can complicate with secondary bacterial infections leading to death, although it is normally self-limiting. It is considered a professional zoonosis, although the clinical course is also benign and self-limiting in humans (Spyrou and Valiakos 2015). The stress associated with captivity seems to increase the morbidity and the clinical severity of the disease (Junta de Andalucía 2015). However, antibodies against this virus were detected in the sera of 11 out of 450 (2.4%) Iberian ibexes investigated in southern Spain (Cubero et al. 2002), indicating that the virus probably circulates asymptotically or subclinically in free-ranging populations. Occasional clinical cases (Camacho et al. 2017) and a disease outbreak affecting both adults and kids with at least one case of associated mortality (Estruch et al. 2020) have been described in free-ranging Iberian ibex populations. Management of contagious ecthyma outbreaks in captive populations includes isolation and treatment with antiseptics and antibiotics of the affected individuals, while prophylaxis is based on facility and equipment disinfection, since there is not an effective prophylactic vaccine (Spyrou and Valiakos 2015; Espinosa et al. 2017c).

Table 4 Parasites reported in Iberian ibex

Parasite	Prevalence	95% central CI (%)	Reference
Abomasum			
<i>Haemonchus contortus</i>	50.0% (7/14)	23.8 – 76.2	Rossi et al. (1994)
	14.3% (2/14)	0.0 – 32.6	Carrau et al. (2021a)
<i>Marshallagia dentispicularis</i>	28.6% (4/14)	4.9 – 52.2	Carrau et al. (2021a)
<i>Marshallagia marshalli</i>	35.7% (5/14)	10.6 – 60.8	Rossi et al. (1994)
	86.7% (13/15)	69.5 – 100.0	Pérez et al. (1996a)
	85.5% (94/110)	78.9 – 92.0	Antón et al. (2002), Pérez et al. (2006)
	78.5% (62/79)	69.4 – 87.5	Pérez et al. (2003)
	35.7% (5/14)	10.6 – 60.8	Carrau et al. (2021a)
<i>Marshallagia occidentalis</i>	14.3% (2/14)	0.0 – 32.6	Rossi et al. (1994)
	7.3% (8/110)	2.4 – 12.1	Antón et al. (2002), Pérez et al. (2006)
	22.8% (18/79)	13.5 – 32.0	Pérez et al. (2003)
<i>Nematodirus abnormalis</i>	0.9% (1/110)	0.0 – 2.7	Antón et al. (2002), Pérez et al. (2006)
	3.8% (3/79)	0.0 – 8.0	Pérez et al. (2003)
<i>Nematodirus davtiani</i>	20.0% (3/15)	0.0 – 40.2	Pérez et al. (1996a)
	21.8% (24/110)	14.1 – 29.5	Antón et al. (2002), Pérez et al. (2006)
	21.5% (17/79)	12.5 – 30.6	Pérez et al. (2003)
<i>Nematodirus oiratianus</i>	35.5% (39/110)	26.5 – 44.4	Antón et al. (2002), Pérez et al. (2006)
	2.5% (2/79)	0.0 – 6.0	Pérez et al. (2003)
<i>Ostertagia circumcincta</i>	100.0% (14/14)	100.0 – 100.0	Rossi et al. (1994)
<i>Ostertagia leptospicularis</i>	14.3% (2/14)	0.0 – 32.6	Carrau et al. (2021a)
<i>Ostertagia lyrata</i>	0.9% (1/110)	0.0 – 2.7	Antón et al. (2002), Pérez et al. (2006)
	1.3% (1/79)	0.0 – 3.7	Pérez et al. (2003)
<i>Ostertagia occidentalis</i>	7.1% (1/14)	0.0 – 20.6	Carrau et al. (2021a)
<i>Ostertagia ostertagi</i>	80.0% (12/15)	59.8 – 100.0	Pérez et al. (1996a)
	14.5% (16/110)	8.0 – 21.1	Antón et al. (2002), Pérez et al. (2006)
	20.3% (16/79)	11.4 – 29.1	Pérez et al. (2003)
	0.0% (0/14)	0.0 – 0.0	Carrau et al. (2021a)
	64.3% (9/14)	39.2 – 89.4	Rossi et al. (1994)
<i>Spiculopteria asymmetrica</i>	42.9% (6/14)	16.9 – 68.8	Carrau et al. (2021a)
<i>Spiculopteria quadrispiculata</i>	21.4% (3/14)	0.0 – 42.9	Carrau et al. (2021a)
<i>Teladorsagia circumcincta</i>	85.5% (94/110)	78.9 – 92.0	Antón et al. (2002), Pérez et al. (2006)
	97.5% (77/79)	94.0 – 100.0	Pérez et al. (2003)
	92.9% (13/14)	79.4 – 100.0	Carrau et al. (2021a)
<i>Teladorsagia davtiani</i>	0.9% (1/110)	0.0 – 2.7	Antón et al. (2002), Pérez et al. (2006)
	1.3% (1/79)	0.0 – 3.7	Pérez et al. (2003)
	0.0% (0/14)		Carrau et al. (2021a)
<i>Teladorsagia trifurcata</i>	14.5% (16/110)	8.0 – 21.1	Antón et al. (2002), Pérez et al. (2006)
	46.8% (37/79)	35.8 – 57.8	Pérez et al. (2003)
	71.4% (10/14)	47.8 – 95.1	Carrau et al. (2021a)
<i>Trichostrongylus axei</i>	35.7% (5/14)	10.6 – 60.8	Rossi et al. (1994)
	0.9% (1/110)	0.0 – 2.7	Antón et al. (2002), Pérez et al. (2006)
	2.5% (2/79)	0.0 – 6.0	Pérez et al. (2003)
	35.7% (5/14)	10.6 – 60.8	Carrau et al. (2021a)
<i>Trichostrongylus vitrinus</i>	1.8% (2/110)	0.0 – 4.3	Antón et al. (2002), Pérez et al. (2006)
	2.5% (2/79)	0.0 – 6.0	Pérez et al. (2003)
Small intestine			
<i>Avitellina centripunctata</i>	0.2% (1/489)	0.0 – 0.6	Antón et al. (2002), Pérez et al. (2006)
<i>Marshallagia marshalli</i>	20.9% (23/110)	13.3 – 28.5	Antón et al. (2002), Pérez et al. (2006)
	14.4% (12/83)	6.9 – 22.0	Pérez et al. (2003)
<i>Marshallagia occidentalis</i>	7.3% (8/110)	2.4 – 12.1	Antón et al. (2002), Pérez et al. (2006)

Table 4 (continued)

Parasite	Prevalence	95% central CI (%)	Reference
	3.6% (3/83)	0.0 – 7.6	Pérez et al. (2003)
<i>Nematodirus abnormalis</i>	28.6% (4/14)	4.9 – 52.2	Rossi et al. (1994)
	100.0% (15/15)	100.0 – 100.0	Pérez et al. (1996a)
	54.5% (60/110)	45.2 – 63.9	Antón et al. (2002), Pérez et al. (2006)
	42.2% (35/83)	7.9 – 76.4	Pérez et al. (2003)
	82.4% (14/17)	64.2 – 100.0	Carrau et al. (2021a)
<i>Nematodirus davtianus</i>	42.9% (6/14)	16.9 – 68.8	Rossi et al. (1994)
	57.3% (63/110)	48.0 – 66.5	Antón et al. (2002), Pérez et al. (2006)
	44.6% (37/83)	33.9 – 55.3	Pérez et al. (2003)
<i>Nematodirus filicollis</i>	100.0% (15/15)	100.0 – 100.0	Pérez et al. (1996a)
	1.8% (2/110)	0.0 – 4.3	Antón et al. (2002), Pérez et al. (2006)
	1.2% (1/83)	0.0 – 3.6	Pérez et al. (2003)
	11.8% (2/17)	0.0 – 27.1	Carrau et al. (2021a)
<i>Nematodirus oiratianus</i>	56.4% (62/110)	47.1 – 65.6	Antón et al. (2002), Pérez et al. (2006)
	47.0% (39/83)	36.3 – 57.7	Pérez et al. (2003)
<i>Nematodirus spathiger</i>	7.1% (1/14)	0.0 – 20.6	Rossi et al. (1994)
	2.7% (3/110)	0.0 – 5.8	Antón et al. (2002), Pérez et al. (2006)
	2.4% (2/83)	0.0 – 5.7	Pérez et al. (2003)
	47.1% (8/17)	23.3 – 70.8	Carrau et al. (2021a)
<i>Ostertagia ostertagi</i>	4.5% (5/110)	0.7 – 8.4	Antón et al. (2002), Pérez et al. (2006)
	3.6% (3/83)	0.0 – 7.6	Pérez et al. (2003)
<i>Teladorsagia circumcincta</i>	47.3% (52/110)	37.9 – 56.6	Antón et al. (2002), Pérez et al. (2006)
	31.3% (26/83)	21.3 – 41.3	Pérez et al. (2003)
<i>Teladorsagia trifurcata</i>	9.1% (10/110)	3.7 – 14.5	Antón et al. (2002), Pérez et al. (2006)
	7.2% (6/83)	1.7 – 12.8	Pérez et al. (2003)
<i>Trichostrongylus capricola</i>	85.7% (12/14)	67.4 – 100.0	Rossi et al. (1994)
	2.7% (3/110)	0.0 – 5.8	Antón et al. (2002), Pérez et al. (2006)
	1.2% (1/83)	0.0 – 3.6	Pérez et al. (2003)
	70.6% (12/17)	48.9 – 92.2	Carrau et al. (2021a)
<i>Trichostrongylus colubriformis</i>	50.0% (7/14)	23.8 – 76.2	Rossi et al. (1994)
	21.6% (8/37)	8.4 – 34.9	Pérez et al. (1996a)
	0.0% (0/17)	0.0 – 0.0	Carrau et al. (2021a)
<i>Trichostrongylus vitrinus</i>	21.4% (3/14)	0.0 – 42.9	Rossi et al. (1994)
	4.5% (5/110)	0.7 – 8.4	Antón et al. (2002), Pérez et al. (2006)
	3.6% (3/83)	0.0 – 7.6	Pérez et al. (2003)
	70.6% (12/17)	48.9 – 92.2	Carrau et al. (2021a)
Large intestine			
<i>Chabertia ovina</i>	52.9% (9/17)	29.2 – 76.7	Carrau et al. (2021a)
<i>Oesophagostomum venulosum</i>	36.3% (4/11)	7.9 – 64.8	Rossi et al. (1994)
	70.6% (12/17)	48.9 – 92.2	Carrau et al. (2021a)
<i>Skrjabinema ovis</i>	29.4% (5/17)	7.8 – 51.1	Carrau et al. (2021a)
<i>Skrjabinema</i> sp.	27.3% (3/11)	1.0 – 53.6	Rossi et al. (1994)
<i>Trichuris ovis</i>	9.1% (1/11)	0.0 – 26.1	Rossi et al. (1994)
	5.9% (1/17)	0.0 – 17.1	Carrau et al. (2021a)
Faeces			
<i>Eimeria aspheronica</i>	0.5% (2/379)	0.0 – 1.3	Antón et al. (2002), Pérez et al. (2006)
<i>Eimeria arloingi</i>	73.9% (280/379)	69.5 – 78.3	Antón et al. (2002), Pérez et al. (2006)
<i>Eimeria caprina</i>	5% (19/379)	2.8 – 7.2	Antón et al. (2002), Pérez et al. (2006)
<i>Eimeria capraovina</i>	5% (19/379)	2.8 – 7.2	Antón et al. (2002), Pérez et al. (2006)
<i>Eimeria christenseni</i>	10.0% (38/379)	7.0 – 13.1	Antón et al. (2002), Pérez et al. (2006)
	86.4% (19/22)	72.0 – 100.0	Pérez et al. (1996a)

Table 4 (continued)

Parasite	Prevalence	95% central CI (%)	Reference
<i>Eimeria folchijevi</i>	2.9% (11/379)	1.2 – 4.6	Antón et al. (2002), Pérez et al. (2006)
<i>Eimeria hirci</i>	1.1% (4/379)	0.0 – 2.1	Antón et al. (2002), Pérez et al. (2006)
<i>Eimeria ninakohlykimovae</i>	59.0% (13/22)	38.5 – 79.6	Pérez et al. (1996a)
	6.1% (23/379)	3.7 – 8.5	Antón et al. (2002), Pérez et al. (2006)
<i>Eimeria parva</i>	63.6% (14/22)	43.5 – 83.7	Pérez et al. (1996a)
<i>Eimeria</i> sp.	0.5% (2/379)	0.0 – 1.3	Antón et al. (2002), Pérez et al. (2006)
	97.7% (127/130)	95.1 – 100.0	Calero-Bernal et al. (2020)
<i>Moniezia expansa</i>	5.4% (2/37)	0.0 – 12.7	Pérez et al. (1996a)
	8.0% (39/489)	5.6 – 10.4	Antón et al. (2002), Pérez et al. (2006)
<i>Moniezia benedeni</i>	7.8% (38/489)	5.4 – 10.1	Antón et al. (2002), Pérez et al. (2006)
<i>Moniezia</i> sp.	10.0% (13/130)	4.8 – 15.2	Calero-Bernal et al. (2020)
<i>Bunostomum</i> sp.	2.5% (1/40)	0.0 – 7.3	Refoyo et al. (2016)
<i>Cooperia</i> sp.	2.5% (1/40)	0.0 – 7.3	Refoyo et al. (2016)
<i>Cystocaulus ocreatus</i>	16.3%*		Cano et al. (1996)
<i>Dictyocaulus filaria</i>	37.5%*		Cano et al. (1996)
	1.5% (2/130)	0.0 – 3.7	Calero-Bernal et al. (2020)
<i>Dictyocaulus</i> sp.	7.5% (3/40)	0.0 – 15.7	Refoyo et al. (2016)
<i>Muellerius capillaris</i>	66.0%*		Cano et al. (1996)
	97.3% (110/113)	94.4 – 100.0	Calero-Bernal et al. (2020)
<i>Muellerius</i> sp.	62.5% (25/40)	47.5 – 77.5	Refoyo et al. (2016)
<i>Nematodirus/Marshallagia</i> sp.	22.5% (9/40)	9.6 – 35.4	Refoyo et al. (2016)
<i>Nematodirus</i> sp.	50.0% (65/130)	41.4 – 58.6	Calero-Bernal et al. (2020)
<i>Ostertagia</i> sp.	7.5% (3/40)	0.0 – 15.7	Refoyo et al. (2016)
<i>Protostrongylus</i> sp.	4.5% (1/22)	0.0 – 13.2	Pérez et al. (1996a)
<i>Protostrongylus rufescens</i> *	21.4%		Cano et al. (1996)
<i>Skrjabinema</i> sp.	42.5% (17/40)	27.2 – 57.8	Refoyo et al. (2016)
<i>Strongyloides</i> sp.	17.5% (7/40)	5.7 – 29.3	Refoyo et al. (2016)
<i>Strongylidae</i>	93.1% (121/130)	88.7 – 97.4	Calero-Bernal et al. (2020)
<i>Teladorsagia</i> sp.	10.0% (4/40)	0.7 – 19.3	Refoyo et al. (2016)
<i>Toxocara vitulorum</i>	0.8% (1/130)	0.0 – 2.3	Calero-Bernal et al. (2020)
<i>Trichuris</i> sp.	2.4% (9/379)	0.8 – 3.9	Antón et al. (2002), Pérez et al. (2006)
	2.5% (1/40)	0.0 – 7.3	Refoyo et al. (2016)
	0.8% (1/130)	0.0 – 2.3	Calero-Bernal et al. (2020)
<i>Dicrocoelium dendriticum</i>	0.5% (2/379)	0.0 – 1.3	Antón et al. (2002), Pérez et al. (2006)
	20.8% (30/144)	14.2 – 27.5	Calero-Bernal et al. (2020)
<i>Dicrocoelium</i> sp.	2.5% (1/40)	0.0 – 7.3	Refoyo et al. (2016)
<i>Fasciola hepatica</i>	1.3% (5/379)	0.2 – 2.5	Antón et al. (2002), Pérez et al. (2006)
<i>Paramphistomum</i> sp.	0.5% (2/379)	0.0 – 1.3	Antón et al. (2002), Pérez et al. (2006)
	9.1% (2/22)	0.0 – 21.1	Pérez et al. (1996a)
Liver			
<i>Fasciola hepatica</i>	6.7% (1/15)	0.0 – 19.3	Pérez et al. (1996a)
	1.7% (8/478)	0.5 – 2.8	Antón et al. (2002), Pérez et al. (2006)
Lungs			
<i>Cystocaulus ocreatus</i>	20.0% (3/15)	0.0 – 40.2	Pérez et al. (1996a)
	32.1% (267/831)	29.0 – 35.3	Antón et al. (2002), Pérez et al. (2006)
	26.3% (5/19)	6.5 – 46.1	Carrau et al. (2021b)
<i>Dictyocaulus filaria</i>	1.2% (10/831)	0.5 – 1.9	Antón et al. (2002), Pérez et al. (2006)
	0.0% (0/19)	0.0 – 0.0	Carrau et al. (2021b)
<i>Echinococcus granulosus</i>	0.2% (1/479)	0.0 – 0.6	Antón et al. (2002), Pérez et al. (2006)
<i>Muellerius capillaris</i>	26.7% (4/15)	4.3 – 49.0	Pérez et al. (1996a)
	74.2% (617/831)	71.3 – 77.2	Antón et al. (2002), Pérez et al. (2006)

Table 4 (continued)

Parasite	Prevalence	95% central CI (%)	Reference
	84.2% (16/19)	67.8 – 100.0	Carrau et al. (2021b)
<i>Neostromylus linearis</i>	78.9% (15/19)	60.6 – 97.3	Carrau et al. (2021b)
<i>Neostromylus</i> sp.	31.3% (260/831)	28.1 – 34.4	Antón et al. (2002), Pérez et al. (2006)
<i>Protostrongylus</i> sp.	35.3% (293/831)	32.0 – 38.5	Antón et al. (2002), Pérez et al. (2006)
	57.9% (11/19)	35.7 – 80.1	Carrau et al. (2021b)
Diaphragm			
<i>Sarcocystis</i> sp.	80% (24/30)	65.7 – 94.3	Pérez et al. (1996a)
	27.4% (118/430)	23.2 – 31.7	Antón et al. (2002), Pérez et al. (2006)
	84.0% (42/50)	73.8 – 94.2	Calero-Bernal et al. (2020)
Peritoneum			
<i>Avitellina</i> sp.	6.7% (1/15)	0.0 – 19.3	Pérez et al. (1996a)
<i>Taenia hydatigena</i>	27.1% (130/479)	23.2 – 31.1	Antón et al. (2002), Pérez et al. (2006)
	6.9% (10/144)	2.8 – 11.1	Calero-Bernal et al. (2020)
Brain			
<i>Multiceps multiceps</i>	1.1% (2/180)	0.0 – 2.6	Pérez et al. (1996a)
<i>Taenia multiceps</i>	0.3% (2/582)	0.0 – 0.8	Antón et al. (2002), Pérez et al. (2006)
Skin			
<i>Dermacentor marginatus</i>	**		Castellà et al. (1996)
	2.1% (10/475)	0.8 – 3.4	Antón et al. (2002), Pérez et al. (2006)
<i>Dermacentor reticulatus</i>	0.6% (3/475)	0.0 – 1.3	Antón et al. (2002), Pérez et al. (2006)
<i>Haemaphysalis sulcata</i>			Castellà et al. (1996)
	32.2% (153/475)	28.0 – 36.4	Antón et al. (2002), Pérez et al. (2006)
	10.9% (15/138)	5.7 – 16.1	Calero-Bernal et al. (2020)
<i>Haemaphysalis punctata</i>	**		Castellà et al. (1996)
<i>Hyalomma beneditai</i>	18.9% (36/190)	13.4 – 24.5	Pérez et al. (1996a)
<i>Hyalomma marginatum marginatum</i>	5.1% (7/138)	1.4 – 8.7	Calero-Bernal et al. (2020)
<i>Ixodes ricinus</i>	20.0% (38/190)	14.3 – 25.7	Pérez et al. (1996a)
	4.2% (20/475)	2.4 – 6.0	Antón et al. (2002), Pérez et al. (2006)
	10.9% (15/138)	5.7 – 16.1	Calero-Bernal et al. (2020)
<i>Rhipicephalus bursa</i>	**		Castellà et al. (1996)
	42.7% (203/475)	38.3 – 47.2	Antón et al. (2002), Pérez et al. (2006)
	52.2% (72/138)	43.8 – 60.5	Calero-Bernal et al. (2020)
<i>Rhipicephalus pusilus</i>	15.8% (30/190)	10.6 – 21.0	Pérez et al. (1996a)
<i>Bovicola crassipes</i>	14.2% (27/190)	9.2 – 19.2	Pérez et al. (1996a)
	20.2% (96/475)	16.6 – 23.8	Antón et al. (2002), Pérez et al. (2006)
<i>Linnognathus</i> sp.	1.1% (2/190)	0.0 – 2.5	Pérez et al. (1996a)
<i>Linognathus stenopsis</i>	1.1% (5/475)	0.1 – 2.0	Antón et al. (2002), Pérez et al. (2006)
<i>Psoroptes</i> sp.	0.6% (3/475)	0.0 – 1.3	Antón et al. (2002), Pérez et al. (2006)
<i>Trombicula</i> sp.	1.6% (3/190)	0.0 – 3.4	Pérez et al. (1996a)
	0.4% (2/475)	0.0 – 1.0	Antón et al. (2002), Pérez et al. (2006)
<i>Straelensia cynotis</i>	One case report		Cevdanes et al. (2019)
Blood			
<i>Anaplasma ovis</i>	4.5% (5/110)	0.7 – 8.4	Antón et al. (2002), Pérez et al. (2006)
<i>Eperythrozoon ovis</i>	1.8% (2/110)	0.0 – 4.3	Antón et al. (2002), Pérez et al. (2006)
<i>Ehrlichia phagocytophila</i>	0.9% (1/110)	0.0 – 2.7	Antón et al. (2002), Pérez et al. (2006)
<i>Theileria ovis</i>	1.8% (2/110)	0.0 – 4.3	Antón et al. (2002), Pérez et al. (2006)

* Cano et al. (1996) reported prevalence but did not provide accurate sample size information to allow for estimation of confidence intervals

** Castellà et al. (1996) reported presence but did not provide prevalence values

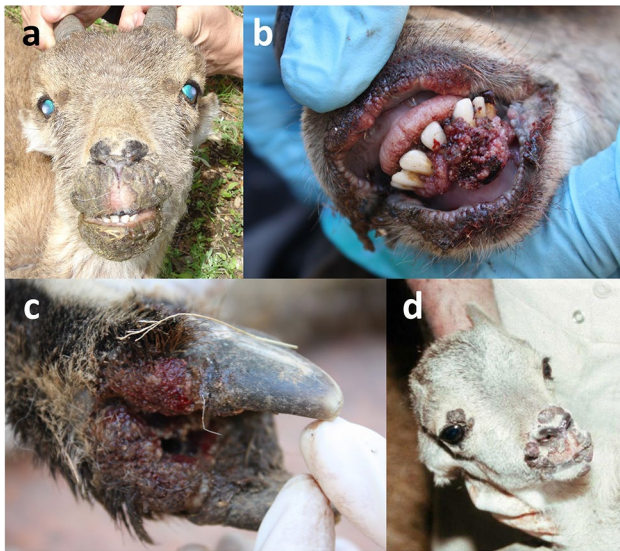


Fig. 7 Adult Iberian ibex female (a–c) and kid (d) with crusted skin lesions affecting the commissures of the mouth, peripheral lip epidermis (a, d), oral mucosa (b), and interdigital area (c), consistent with severe proliferative, pustular, and ulcerative dermatitis compatible with orf virus infection (contagious ecthyma)

Footrot or infectious pododermatitis is a disease affecting the hooves of domestic and wild ungulates, with the involvement of bacteria such as *Dichelobacter (Bacteroides) nodosus*, *Fusobacterium necrophorum*, *Arcanobacterium (Trueperella) pyogenes*, and *Treponema* spp. (Lavín et al. 2004; Frosth et al. 2015; Espinosa et al. 2017c; Rzewuska et al. 2019). Although footrot has not been reported in free-living Iberian ibex, in captive populations, this disease is favored by the increase in concentration and the higher survival of these bacteria in moist soils with abundant organic contents (Muzafar et al. 2015), as well as by hoof wounds related to overgrowth because of lower wear and softening due to humid conditions (Espinosa et al. 2017c). Treatment of outbreaks in captive Iberian ibex populations should include hoof trimming with the removal of dead tissue, systemic antibiotics, local footbaths with disinfectants, and soil management to prevent moisture and accumulation of organic matter. Prophylactic vaccination can be considered if prevalence is high and/or outbreaks are recurrent (Frosth et al. 2015; Muzafar et al. 2015; Espinosa et al. 2017c).

Finally, *A. (T.) pyogenes* and/or *Staphylococcus aureus* subspp. *anaerobius* can cause suppurative lesions. These bacteria are normally present in the skin and mucosae and can enter the body through wounds, producing multiple abscesses in the inner organs such as the lymph nodes, lungs, liver, kidneys, and/or central nervous system, among others, which can cause death (Espinosa et al. 2017c; Rzewuska et al. 2019). Although this is a sporadic disease in free-ranging populations, captivity conditions can increase skin trauma due to wounds caused by the facility, increased intraspecific fights,

or increased moisture, favoring the casuistic for pyogenic infection (Espinosa et al. 2017c). Quarantine isolation with surgical debriding and antibiotic treatment can be effective in initial stages, but in advanced cases, prognosis is poor. Facility design and careful handling to avoid injuries combined with early healing and disinfection of wounds are likely the best prophylactic options (Espinosa et al. 2017c).

Future research on Iberian ibex diseases

The comparison of the existent knowledge on sarcoptic mange and other diseases in Iberian ibex identifies the gaps to complete through future research. The knowledge on pathogenesis, host immune response, and pathogen-host relationship for sarcoptic mange overcomes the research performed in these aspects for all the other diseases together. While the performance, usefulness on the field and with handled ibexes, specificity, and sensitivity of diagnostic methods have been assessed for sarcoptic mange (Arenas et al. 2002; Granados et al. 2011; Alasaad et al. 2012, 2015; Mounsey et al. 2012; Ráez-Bravo et al. 2016; Valldeperes et al. 2019; Pérez et al. 2021), such knowledge is limited if existing at all for the other diseases reported in Iberian ibex. Therefore, research on the pathogenesis, epidemiology, treatment, and management of diseases in Iberian ibex populations can be hampered by diagnostic limitations. Further research should be aimed at developing, testing, validating, improving, and innovating diagnostic methods, particularly non-invasive and telemetric methods which could be applied in free-ranging individuals and populations. Despite research on sarcoptic mange predominates the investigations of Iberian ibex diseases, the scientific and manager community is far from agreeing on the best management of the disease, so further research on the efficacy and applicability of the treatment and population management of sarcoptic mange in Iberian ibex should continue to be a priority. Such research should include prophylactic measures, not only for sarcoptic mange but also for the rest of Iberian ibex diseases. Finally, the study and detection of coinfection patterns, studying the interaction among different pathogens and the host, should be key to understand disease epidemiology in Iberian ibex, as it is for sympatric wild ungulates (Alasaad et al. 2008; González-Candela et al. 2009; García-Bocanegra et al. 2012b).

Conclusions

This review compiles the current knowledge available on the diseases of Iberian ibex, which has allowed the detection of gaps in knowledge with regard to the diseases that may affect this species and their management. Overall, the

information presented draws the major guidelines for the future of disease research in this species and the consequent management applications, including the diseases to monitor and the best management measures.

While sarcoptic mange is the main health threat to naïve Iberian ibex populations, associated with morbidity and mortality with demographic impact, most of the affected populations recover from the initial outbreaks and achieve an enzootic status, where the disease no longer hampers population viability. Thus, applying empiric measures to manage this disease without scientific validation may not only be useless or even counterproductive, but can also negatively affect the evolution from epidemic outbreak to enzootic status by eliminating potentially resistant individuals. Moreover, apart from being inefficient, massive on-field administration of antiparasitic drugs (namely, macrocyclic lactones) intended for individual parenteral use is a major animal welfare, environmental, and health concern. Since domestic livestock has been identified as the origin of sarcoptic mange outbreaks in Iberian ibex, surveillance and control of this disease in small ruminant livestock sympatric with Iberian ibex are probably more efficient management options.

The review of other diseases reported in Iberian ibex raises doubts about the rationale for the diseases included in the health surveillance of this species, such as tuberculosis or brucellosis, since Iberian ibex seems not to be a reservoir for these diseases and even rarely if ever affected by them. Instead, other diseases that might be relevant in the health surveillance of Iberian ibex populations deserve further research and monitoring to elucidate their potential effects in the population dynamics of the species.

Acknowledgements The authors are grateful to Fundación Artemisan (<https://fundacionartemisan.com/>), which promotes environmental conservation and sustainable game management through research and communication. Fundación Artemisan promoted a holistic-approach study on Iberian ibex in Spain, which gathered together the authors and originated the idea for this article. This review benefitted from the knowledge generated through the research grants project 173/2009/M/00, 03/15/M/00, 861_11_M_00, and 2016/00014/M, funded by the Consejería de Medio Ambiente de la Junta de Andalucía, and CGL2012-40043-C02-01, CGL2012-40043-C02-02, and CGL2016-80543-P, funded by the Spanish Ministerio de Economía y Competitividad. The authors' research activities are partially supported by the Plan Andaluz de Investigación (RNM-118 group). MV was supported by a FI-GENCAT Fellowship (2020_FI_B2_00049, co-financed by Agència de Gestió d'Ajuts Universitaris i de Recerca of the Generalitat de Catalunya and the European Social Fund). GM is a Serra Hünter Fellow.

Author contribution MV, PF, RCSE, ARB, FJCLM, JESP, JMP, and JEG compiled the information and drafted the sarcoptic mange section of the manuscript; PP, JRLO, SL, GM, ST, JEST, and RV gathered information on other diseases; JRLO drafted the section on other diseases, elaborated all the tables, and prepared Figs. 5 and 6; JEG prepared Fig. 2; JEG and JRLO prepared Figs. 1 and 4; JEG and MV prepared Fig. 3; JEG, JESP, and JRLO prepared Fig. 7. All the authors

critically revised the manuscript and made significant contributions to the text and tables.

Funding Open Access Funding provided by Universitat Autònoma de Barcelona. Part of the authors benefitted of the support of the Consejería de Medio Ambiente of the Junta de Andalucía (Spain) to the group RNN 118 through the grants 173/2009/M/00; 03/15/M/00; 861_11_M_00, 2016/00014/M. This review benefitted from funding of the Spanish Ministerio de Economía y Competitividad through the grants CGL2012-40043-C02-01, CGL2012-40043-C02-02, and CGL2016-80543-P. Marta Valldeperes was supported by the predoctoral grant 2020_FI_B2_00049, funded by the Agència de Gestió d'Ajuts Universitaris i de Recerca of the Generalitat de Catalunya (Spain) and the European Social Fund.

Data Availability All the data used to generate this review are publicly available. The authors will share information on data location upon request.

Declarations

Competing interests The authors declare no competing interests.

Open Access This article is licensed under a Creative Commons Attribution 4.0 International License, which permits use, sharing, adaptation, distribution and reproduction in any medium or format, as long as you give appropriate credit to the original author(s) and the source, provide a link to the Creative Commons licence, and indicate if changes were made. The images or other third party material in this article are included in the article's Creative Commons licence, unless indicated otherwise in a credit line to the material. If material is not included in the article's Creative Commons licence and your intended use is not permitted by statutory regulation or exceeds the permitted use, you will need to obtain permission directly from the copyright holder. To view a copy of this licence, visit <http://creativecommons.org/licenses/by/4.0/>.

References

- Abu-Samra MT, Hago BED, Aziz MA, Awad FW (1981) Sarcoptic mange in sheep in the Sudan. *Ann Trop Med Parasitol* 75(6):639–645
- Acevedo P, Cassinello J (2009) Biology, ecology and status of Iberian ibex *Capra pyrenaica*: a critical review and research prospectus. *Mamm Rev* 39(1):17–32
- Aguirre AA, Starkey EE, Hansen DE (1995) Wildlife diseases in national park ecosystems. *Wildl Soc Bull* 23:415–419
- Alados CL, Escós J (2017) Cabra montés – *Capra pyrenaica*. In: Salvador A, Cassinello J (eds) *Enciclopedia Virtual de los Vertebrados Españoles*. Museo Nacional de Ciencias Naturales, Madrid. <http://www.vertebradosibericos.org>. Accessed 17 Dec 2022
- Alasaad S, Granados JE, Cano-Manuel FJ, Meana A, Zhu XQ, Pérez JM (2008) Epidemiology of fasciolosis affecting Iberian ibex (*Capra pyrenaica*) in southern Spain. *Parasitol Res* 102(4):751–755. <https://doi.org/10.1007/s00436-007-0830-2>
- Alasaad S, Permunian R, Gakuya F, Mutinda M, Soriguer RC, Rossi L (2012) Sarcoptic-mange detector dogs used to identify infected animals during outbreaks in wildlife. *BMC Vet Res* 8:110. <https://doi.org/10.1186/1746-6148-8-110>
- Alasaad S, Granados JE, Fandos P, Cano-Manuel FJ, Soriguer RC, Pérez JM (2013) The use of radio-collars for monitoring wildlife diseases: a case study from Iberian ibex affected by *Sarcoptes scabiei* in Sierra Nevada. *Spain Parasites Vectors* 6:242. <https://doi.org/10.1186/1756-3305-6-242>

- Alasaad S, Min AM, Pasquetti M, Alagaili AN, D'Amelio S, Berrilli F, Obanda V, Gebely MA, Soriguer RC, Rossi L (2015) Universal conventional and real-time PCR diagnosis tools for *Sarcoptes scabiei*. Parasites Vectors 8(1):58. <https://doi.org/10.1186/s13071-015-1204-8>
- Almería S, Vidal D, Ferrer D, Pabón M, Fernández-de-Mera MI, Ruiz-Fons F, Alzaga V, Marco I, Calvete C, Lavin S, Gortazar C, López-Gatius F, Dubey JP (2007) Seroprevalence of *Neospora caninum* in non-carnivorous wildlife from Spain. Vet Parasitol 143(1):21–28. <https://doi.org/10.1016/j.vetpar.2006.07.027>
- Almería S, Cano-Terriza D, Prieto P, Dubey JP, Jiménez-Martín D, Castro-Scholten S, Paniagua J, García-Bocanegra I (2021) Seroprevalence and risk factors of *Toxoplasma gondii* infection in wild ungulates that cohabit in a natural park with human–animal interaction in the Mediterranean ecosystem. Zoonoses Public Health 68(3):263–270. <https://doi.org/10.1111/zph.12821>
- Andriantsoanirina V, Izri A, Botterel F, Foulet F, Chosidow O, Durand R (2014) Molecular survey of knockdown resistance to pyrethroids in human scabies mites. Clin Microbiol Infect 20(2):2013–2015. <https://doi.org/10.1111/1469-0691.12334>
- Antón JM, Arenas AJ, Astorga RJ, Boticario D, Buzzi A, Carrasco PA, Chiroso M, Cubero MJ, Delibes-Senna JR, De Martin P, Fandos P, Ferroglio E, Gaina C, Gallego L, García J, Gil JM, González FJ, González M, Granados JE, Habela MÁ, León L, Linde M, Márquez FJ, Meana A, Meneguz PG, Morales A, Moreno PA, Palmquist P, Peña J, Pérez MC, Pérez JM, Pérez J, Rambozzi L, Riquelme JA, Rodolfi M, Rodríguez JJ, Rossi L, Ruiz Martínez I, Sangenis J, Serrano E, Soriguer RC, Weykam S (1999) Seguimiento y control de la sarna sarcóptica que afecta a las poblaciones de cabra montés (*Capra pyrenaica hispanica*) existentes en Andalucía. Unpublished report, 278 pp. https://www.researchgate.net/publication/255997536_Seguimiento_y_control_de_la_sarna_sarcoptica_que_afecta_a_las_poblaciones_de_Cabra_montes_Capra_pyrenaica_hispanica_existentes_en_Andalucia
- Antón JM, Boticario D, Granados JE, Habela MA, Márquez FJ, Meana A, Meneguz PG, Peña J, Pérez J, Pérez JM, Pérez MC, Rossi L, Ruiz-Martínez I, Sangenis J (2002) Estudio de las enfermedades parasitarias de la cabra montés. In: Pérez JM (ed) Distribución, genética y status sanitario de las poblaciones andaluzas de cabra montés. Universidad de Jaén, Jaén, Spain, pp 116–153
- Arenas AJ, Gómez F, Salas R, Carrasco P, Borge C, Maldonado A, O'Brien DJ, Martínez-Moreno FJ (2002) An evaluation of the application of infrared thermal imaging to the tele-diagnosis of sarcoptic mange in the Spanish ibex (*Capra pyrenaica*). Vet Parasitol 109(1–2):111–117. [https://doi.org/10.1016/s0304-4017\(02\)00248-0](https://doi.org/10.1016/s0304-4017(02)00248-0)
- Arenas A, García I, Gómez F, Salas R, Rojas A, Sánchez-Vera M, Arenas AJ (2009a) Determinación de los puntos calientes en el control de la epidemia de sarna sarcóptica en una población de cabra montés (*Capra pyrenaica*) en libertad. V World Conference on Mountain Ungulates, Granada, Spain, p. 295
- Arenas A, Gómez F, Salas R, García I, Carbonero A, Borge A, Perea A, Arenas AJ (2009b) Efectividad de la caza selectiva como medida de control frente a la sarna sarcóptica en una población de cabra montés (*Capra pyrenaica*) en libertad. V World Conference on Mountain Ungulates, Granada, Spain, p. 299
- Arlian LG, Runyan RA, Achar S, Estes SA (1984a) Survival and infestivity of *Sarcoptes scabiei* var. *canis* and var. *hominis*. J Am Acad Dermatol 11(2):210–215. [https://doi.org/10.1016/s0190-9622\(84\)70151-4](https://doi.org/10.1016/s0190-9622(84)70151-4)
- Arlian LG, Runyan RA, Estes SA (1984b) Cross infestivity of *Sarcoptes scabiei*. J Am Acad Dermatol 10(6):979–986. [https://doi.org/10.1016/s0190-9622\(84\)80318-7](https://doi.org/10.1016/s0190-9622(84)80318-7)
- Arlian LG, Vyszynski-Moher DL (1988) Life cycle of *Sarcoptes scabiei* var. *canis*. J Parasitol 74(3):427–430
- Arlian LG (1989) Biology, host relations and epidemiology of *Sarcoptes scabiei*. Ann Rev Entomol 34:139–161. <https://doi.org/10.1146/annurev.en.34.010189.001035>
- Arlian LG, Vyszynski-Moher DL, Pole MJ (1989) Survival of adults and development stages of *Sarcoptes scabiei* var. *canis* when off the host. Exp Appl Acarol 6(3):181–187. <https://doi.org/10.1007/BF01193978>
- Arlian LG, Morgan MS, Vyszynski-Moher DL, Stemmer BL (1994a) *Sarcoptes scabiei*: the circulating antibody response and induced immunity to scabies. Exp Parasitol 78(1):37–50. <https://doi.org/10.1006/expr.1994.1004>
- Arlian LG, Rapp CM, Vyszynski-Moher DL, Morgan MS (1994b) *Sarcoptes scabiei*: histopathological changes associated with acquisition and expression of host immunity to scabies. Exp Parasitol 78(1):51–63. <https://doi.org/10.1006/expr.1994.1005>
- Arlian LG, Rapp CM, Morgan MS (1995) Resistance and immune response in scabies-infested hosts immunized with *Dermatophagoides* mites. Am J Trop Med Hyg 52(6):539–545. <https://doi.org/10.4269/ajtmh.1995.52.539>
- Arlian LG, Morgan MS, Rapp CM, Vyszynski-Moher DL (1996) The development of protective immunity in canine scabies. Vet Parasitol 62:133–142. [https://doi.org/10.1016/0304-4017\(95\)00854-3](https://doi.org/10.1016/0304-4017(95)00854-3)
- Arlian LG, Morgan MS (2017) A review of *Sarcoptes scabiei*: past, present and future. Parasites Vectors 10:297. <https://doi.org/10.1186/s13071-017-2234-1>
- Arnal MC, Fernández de Luco D (2017) Melanoma diseminado y feocromocitoma en un macho montés *Capra pyrenaica hispanica*. 35èmes Rencontres du Groupe d'Étude sur l'Eco-pathologie de la Faune Sauvage de Montagne (GEEFSM). Cofrentes, Valencia (Spain), June 2017 1st–4th, Abstracts
- Arnal MC, Fernández de Luco D, Ferroglio E, Formisano F, Gortázar C, Höfle U, Martín MP, Meneguz PG, Revilla M, Rossi L, Vicente J (2006) Neoplasias en rumiantes silvestres. 24èmes Rencontres du Groupe d'Étude sur l'Eco-pathologie de la Faune Sauvage de Montagne (GEEFSM). Roquetes, Tarragona (Spain), June 9th–11th 2006, Abstracts
- Arnal M, Herrero J, de la Fe C, Revilla M, Prada C, Martínez-Durán D, Gómez-Martín A, Fernández-Arberas O, Amores J, Contreras A, García-Serrano A, de Luco DF (2013) Dynamics of an infectious keratoconjunctivitis outbreak by *Mycoplasma conjunctivae* on Pyrenean chamois *Rupicapra p. pyrenaica*. PLoS One 8(4):e61887. <https://doi.org/10.1371/journal.pone.0061887>
- Arnal MC, Revilla M, Corrales JC, Martínez D, Sánchez A, Herrero J, Contreras A, Fernández de Luco D (2009) Queratoconjunctivitis infecciosa por *M. conjunctivae* en sarrío (*Rupicapra p. pyrenaica*) y en cabra montés (*Capra pyrenaica*) en Aragón. XXI Reunión de la Sociedad Española de Anatomía Patológica Veterinaria. Lugo, Spain. June 2009 24th to 26th, p. 61
- Astorga Márquez RJ, Carvajal A, Maldonado A, Gordon SV, Salas R, Gómez-Guillamón F, Sánchez-Baro A, López-Sebastián A, Santiago-Moreno J (2014) Influence of cohabitation between domestic goat (*Capra aegagrus hircus*) and Iberian ibex (*Capra pyrenaica hispanica*) on seroprevalence of infectious diseases. Eur J Wildl Res 60:387–390. <https://doi.org/10.1007/s10344-013-0785-9>
- Baird GJ, Fontaine MC (2007) *Corynebacterium pseudotuberculosis* and its role in ovine caseous lymphadenitis. J Comp Pathol 137:179–210. <https://doi.org/10.1016/j.jcpa.2007.07.002>
- Barroso P, Relimpio D, Zearra JA, Cerón JJ, Palencia P, Cardoso B, Ferreras E, Escobar M, Cáceres G, López-Olivera JR, Gortázar C (2022) Using integrated wildlife monitoring to prevent future pandemics through one health approach. One Health 16:100479. <https://doi.org/10.1016/j.onehlt.2022.100479>
- Bates P (1997) The pathogenesis and ageing of sheep scab lesions-part 2. State Veterinary Journal, United Kingdom
- Belloy L, Giacometti M, Abdo EA, Nicolet J, Rawinkler MK, Anovskyc MJ, Bruderer U, Frey JF, Abdo EM, Nicolet J, Krawinkler M, Janovsky M, Bruderer U, Frey JF (2001) Detection of specific *Mycoplasma conjunctivae* antibodies in the sera of sheep with infectious keratoconjunctivitis. Vet Res 32:155–164. <https://doi.org/10.1051/vetres:2001118>

- Bente DA, Forrester NL, Watts DM, McAuley AJ, Whitehouse CA, Bray M (2013) Crimean-Congo hemorrhagic fever: history, epidemiology, pathogenesis, clinical syndrome and genetic diversity. *Antiviral Res* 100:159–189. <https://doi.org/10.1016/j.antiviral.2013.07.006>
- Berrilli F, D'Amelio S, Rossi L (2002) Ribosomal and mitochondrial DNA sequence variation in *Sarcoptes* mites from different hosts and geographical regions. *Parasitol Res* 88(8):772–777. <https://doi.org/10.1007/s00436-002-0655-y>
- Besser TE, Cassirer EF, Potter KA, VanderSchalie J, Fischer A, Knowles DP, Herndon DR, Rurangirwa FR, Weiser GC, Srikumaran S (2008) Association of *Mycoplasma ovipneumoniae* infection with population-limiting respiratory disease in free-ranging Rocky Mountain bighorn sheep (*Ovis canadensis canadensis*). *J Clin Microbiol* 46(2):423–430. <https://doi.org/10.1128/JCM.01931-07>
- Bhat SA, Mounsey KE, Liu X, Walton SF (2017) Host immune responses to the itch mite, *Sarcoptes scabiei*, in humans. *Parasites Vectors* 10:385. <https://doi.org/10.1186/s13071-017-2320-4>
- Bijlenga G, Tektoff J, Richard Y, Joubert L, Gastellu J, Prave M, Dumont O, Favrier C, Oudar J (1983) Isolement de 5 souches de "Rickettsia" des lésions de kérato-conjonctivite du chamois ou du bouquetin et du mouton d'alpage. *Sci Vétérinaire Médecine Comparée* 85:6–281
- Black SR, Barker IK, Mehren KG, Crawshaw GJ, Rosendal S, Ruhnke L, Thorsen J, Carman PS (1988) An epizootic of *Mycoplasma ovipneumoniae* infection in captive Dall's sheep (*Ovis dalli dalli*). *J Wildl Dis* 24(4):627–635. <https://doi.org/10.7589/0090-3558-24.4.627>
- Blanco LA, Marcotegui Jaso MA, Frutos Palacios I, Esperanza Martín P, Saez de Ocariz C (1982) Querato-conjuntivitis clamidial en el rebeco *Rupicapra rupicapra* ssp. *Pyrenaica* INIA Ser Ganad 17:79–85
- Bliss DH, Moore RD, Kvasnicka WG (2008) Parasite resistance in US cattle. Proceedings of the 41st Annual Conference of the American Association of Bovine Practitioners, Charlotte, NC, USA, P- 109
- Bornstein ST, Mörner T, Samuel WM (2001) *Sarcoptes scabiei* and sarcoptic mange. In: Samuel WM, Pybus MJ, Kocan AA (eds) *Parasitic Diseases of Wild Mammals*, 2nd ed. Manson Publishing/The Veterinary Press, London, pp 107–119
- Bornstein S, Frössling J, Näslund K, Zakrisson G, Mörner T (2006) Evaluation of a serological test (indirect ELISA) for the diagnosis of sarcoptic mange in red foxes (*Vulpes vulpes*). *Vet Dermatol* 17(6):411–416. <https://doi.org/10.1111/j.1365-3164.2006.00548.x>
- Brewster K, Henke SE, Hilton C, Ortega-S A Jr (2017) Use of remote cameras to monitor the potential prevalence of sarcoptic mange in Southern Texas, USA. *J Wildl Dis* 53:377–381. <https://doi.org/10.7589/2016-08-180>
- Calero-Bernal R, García-Moreno A, González-Barrio D, Nieto-Rodríguez JM, Fernández-Llario P, Hermoso de Mendoza J, Habela MÁ (2020) Vigilancia de enfermedades infecciosas de la cabra montés (*Capra pyrenaica victoriae*) en el oeste de España: implicaciones para la salud y la conservación. *Galemys* 32:13–20. <https://doi.org/10.7325/Galemys.2020.A2>
- Camacho L, Gómez-Guillamón F, Riscalde MA, González D, Zorrilla I, García-Bocanegra I (2017) Primer caso de ectima contagioso en cabra montés (*Capra pyrenaica hispanica*) en libertad. 35^{ésimos} Rencontres du G.E.E.F.S.M. Cofrentes, Valencia, Spain, June 1st–4th, 2017
- Cano E, Notario A, Cano J, Marín JL, Montero F, Montero E (1996) Nematodos broncopulmonares en *Capra pyrenaica hispanica* de Sierra Nevada. I Parasitología. Primeras Jornadas sobre ecopatología de mamíferos silvestres. Bellaterra, Spain, p. 41
- Cano-Manuel Herrero A (2017) Study of *Toxoplasma gondii* and *Neospora caninum* in the Spanish ibex (*Capra pyrenaica*) population of Sierra Nevada National Park (Andalucía, S.E. España). Trabajo de Fin de Máster. Máster Universitario en Gestión de la Fauna Silvestre, Universidad de Murcia, Spain
- Cardoso B, García-Bocanegra I, Acevedo P, Cáceres G, Alves PC, Gortázar C (2021) Stepping up from wildlife disease surveillance to integrated wildlife monitoring in Europe. *Res Vet Sci* 144:149–156. <https://doi.org/10.1016/j.rvsc.2021.11.003>
- Carrau T, Martínez-Carrasco C, Garijo MM, Alonso F, Vizcaíno LL, Herrera-Russert J, Tizzani P, Ruiz de Ybáñez R (2021a) Epidemiological approach to nematode polyparasitism occurring in a sympatric wild ruminant multi-host scenario. *J Helminthol* 95:e29. <https://doi.org/10.1017/S0022149X21000183>
- Carrau T, Martínez-Carrasco C, Garijo MM, Alonso F, Ruiz de Ybáñez R, Tizzani P (2021b) Multivariate abundance analysis of multi-host/multi-parasite lungworms in a sympatric wild ruminant population. *Diversity* 13(6):227. <https://doi.org/10.3390/d13060227>
- Carrera-Faja L, Cardells J, Pailler-García L, Lizana V, Alfaro-Deval G, Espunyes J, Napp S, Cabezón Ó (2022) Evidence of prolonged Crimean-Congo hemorrhagic fever virus endemicity by retrospective serosurvey. *Eastern Spain Emerg Infect Dis* 28(5):1031–1034. <https://doi.org/10.3201/eid2805.212335>
- Carricondo-Sánchez D, Odden M, Linell JDC, Odden J (2017) The range of the mange: spatiotemporal patterns of sarcoptic mange in red foxes (*Vulpes vulpes*) as revealed by camera trapping. *PLoS One* 12:e0176200. <https://doi.org/10.1371/journal.pone.0176200>
- Carta T, Martín-Hernando MP, Boadella M, Fernández-de-Mera IG, Balseiro A, Sevilla IA, Vicente J, Maio E, Vieira-Pinto M, Alvarez J, Pérez-de-la-Lastra JM, Garrido J, Gortázar C (2012) No evidence that wild red deer (*Cervus elaphus*) on the Iberian Peninsula are a reservoir of *Mycobacterium avium* subspecies paratuberculosis infection. *Vet J* 192(3):544–546. <https://doi.org/10.1016/j.tvjl.2011.08.010>
- Carta T, Álvarez J, Pérez de la Lastra JM, Gortázar C (2013) Wildlife and paratuberculosis: a review. *Res Vet Sci* 94(2):191–197. <https://doi.org/10.1016/j.rvsc.2012.11.002>
- Carvalho J, Granados JE, López-Olvera JR, Cano-Manuel FJ, Pérez JM, Fandos P, Soriguer RC, Velarde R, Fonseca C, Ráez-Bravo A, Espinosa J, Pettorelli N, Serrano E (2015) Sarcoptic mange breaks up bottom-up regulation of body condition in a large herbivore population. *Parasites Vectors* 8(1):572. <https://doi.org/10.1186/s13071-015-1188-4>
- Casais R, Prieto M, Balseiro A, Solano P, Parra F, Alonso JMM (2007) Identification and heterologous expression of a *Sarcoptes scabiei* cDNA encoding a structural antigen with immunodiagnostic potential. *Vet Res* 38(3):435–450. <https://doi.org/10.1051/vetres:2007007>
- Castellà J, Marco I, Lavín S, Ortuño A (1996) Los ixódidos de la cabra montés y del muflón en los Puertos de Tortosa y Beceite. Primeras Jornadas sobre ecopatología de mamíferos silvestres. Bellaterra, Spain, p. 56
- Castro I, de la Fuente A, Fandos P, Cano-Manuel F, Granados JE, Soriguer RC, Pérez JM (2016) On the population biology of *Sarcoptes scabiei* infesting Iberian ibex (*Capra pyrenaica*). *Int J Acarol* 42(1):7–11. <https://doi.org/10.1080/01647954.2015.1109710>
- Cevadanes A, Pérez JM, Mentaberre G, Lavín S, Velarde R (2019) First report of *Straelensia cynotis* Fain and Le Net, 2000 (Trombidiformes: Leeuwenhoekidae) parasitizing *Capra pyrenaica* (Artiodactyla: Bovidae) with histopathological analysis. *Int J Acarol* 45(4):214–216. <https://doi.org/10.1080/01647954.2019.1586994>
- Chandler DJ, Fuller LC (2019) A review of scabies: an infestation more than skin deep. *Dermatol* 235(2):79–80. <https://doi.org/10.1159/000495290>
- Colom-Cadena A, Velarde R, Salinas J, Borge C, García-Bocanegra I, Serrano E, Gassó D, Bach E, Casas-Díaz E, López-Olvera JR, Lavín S, León-Vizcaíno L, Mentaberre G (2014) Management of a caseous lymphadenitis outbreak in a new Iberian ibex (*Capra pyrenaica*) stock reservoir. *Acta Vet Scand* 56:83. <https://doi.org/10.1186/s13028-014-0083-x>
- Corbel MJ (1997) Brucellosis: an overview. *Emerg Infect Dis* 3(2):213–221. <https://doi.org/10.3201/eid0302.970219>

- Council Directive 2000/75/EC of 20 November 2000, laying down specific provisions for the control and eradication of bluetongue. Official Journal of the European Communities, 22.12.2000, L327/74–L327/83. <https://eur-lex.europa.eu/legal-content/EN/TXT/PDF/?uri=CELEX:32000L0075&from=en>
- Cross PC, Almborg ES, Haase CG, Hudson PJ, Maloney SK, Metz MC, Munn AJ, Nugent P, Putzeys O, Stahler DR, Stewart AC, Smith DW (2016) Energetic costs of mange in wolves estimated from infrared thermography. *Ecology* 97(8):1938–1948. <https://doi.org/10.1890/15-1346.1>
- Cubero MJ, González M, León L (2002) Enfermedades infecciosas de las poblaciones de cabra montés In: Pérez-Jiménez JM (ed) Distribución, genética y estatus sanitario de las poblaciones andaluzas de cabra montés. Junta de Andalucía, Granada, Spain, pp 197–254
- Cunningham AA, Daszak P, Wood JLN (2017) One Health, emerging infectious diseases and wildlife: two decades of progress? *Phil Trans R Soc B* 372(1725):20160167. <https://doi.org/10.1098/rstb.2016.0167>
- Currie BJ, Harumal P, McKinnon M, Walton SF (2004) First documentation of *in vivo* and *in vitro* ivermectin resistance in *Sarcoptes scabiei*. *Clin Infect Dis* 39(1):e8–12. <https://doi.org/10.1086/421776>
- Dagnall GJR (1994a) An investigation of colonization of the conjunctival sac of sheep by bacteria and mycoplasmas. *Epidemiol Infect* 112:561–567. <https://doi.org/10.1017/s0950268800051268>
- Dagnall GJR (1994b) The role of *Branhamella ovis*, *Mycoplasma conjunctivae* and *Chlamydia psittaci* in conjunctivitis of sheep. *Br Vet J* 150:65–71. [https://doi.org/10.1016/S0007-1935\(05\)80097-1](https://doi.org/10.1016/S0007-1935(05)80097-1)
- Dassanayake RP, Shanthalingam S, Herndon CN, Subramaniam R, Lawrence PK, Bavananthasivam J, Cassirer EF, Haldorson GJ, Foreyt WJ, Rurangirwa FR, Knowles DP, Besser TE, Srikumaran S (2010) *Mycoplasma ovipneumoniae* can predispose bighorn sheep to fatal *Mannheimia haemolytica* pneumonia. *Vet Microbiol* 145:354–359. <https://doi.org/10.1016/j.vetmic.2010.04.011>
- Dassanayake RP, Shanthalingam S, Subramaniam R, Herndon CN, Bavananthasivam J, Haldorson GJ, Foreyt WJ, Evermann JF, Herrmann-Hoesing LM, Knowles DP, Srikumaran S (2013) Role of *Bibersteinia trehalosi*, respiratory syncytial virus, and parainfluenza-3 virus in bighorn sheep pneumonia. *Vet Microbiol* 162:166–172. <https://doi.org/10.1016/j.vetmic.2012.08.029>
- Davey RB, Pound JM, Miller JA, Klavons JA (2010) Therapeutic and persistent efficacy of a long-acting (LA) formulation of ivermectin against *Rhipicephalus (Boophilus) microplus* (Acari: Ixodidae) and sera concentration through time in treated cattle. *Vet Parasitol* 169(1–2):149–156. <https://doi.org/10.1016/j.vetpar.2009.12.040>
- Davies PR (1995) Sarcoptic mange and production performance of swine: a review of the literature and studies of associations between mite infestation, growth rate and measures of mange severity in growing pigs. *Vet Parasitol* 60(3):249–264. [https://doi.org/10.1016/0304-4017\(95\)00795-3](https://doi.org/10.1016/0304-4017(95)00795-3)
- Degiorgis MP, Obrecht E, Ryser A, Giacometti M (1999) The possible role of eye-frequenting flies in the transmission of *Mycoplasma conjunctivae*. *Mitt Schweiz Entomol Ges* 72:189–194. <https://doi.org/10.5169/seals-402751>
- Degiorgis MP, Frey J, Nicolet J, Abdo EM, Fatzer R, Schlatter Y, Reist S, Janovsky M, Giacometti M (2000) An outbreak of infectious keratoconjunctivitis in Alpine chamois (*Rupicapra r. rupicapra*) in Simmental-Gruyères. Switzerland Schweiz Arch Tierheilkd 142:520–527
- Desta GB, Jena PK, Hassen HM, Behera MR (2022) Factors associated with zoonosis and reverse zoonosis of *Mycobacterium tuberculosis* and *Mycobacterium bovis* in Ethiopia: a systematic review and meta-analysis. *Int J Health Sci* 6(S5):1630–1653. <https://doi.org/10.53730/ijhs.v6nS5.8922>
- Dias-Alves A, Cabezón Ó, Borel N, López-Olvera JR, Mentaberre G, Lavín S, Fernández-Aguilar X (2021) Molecular detection and identification of Chlamydiaceae in the eyes of wild and domestic ruminant hosts from northern Spain. *Pathogens* 10(3):383. <https://doi.org/10.3390/pathogens10030383>
- Dickey AM, Loy JD, Bono JL, Smith TP, Apley MD, Lubbers BV, DeDonder KD, Capik SF, Larson RL, White BJ, Blom J, Chitko-McKown CG, Clawson ML (2016) Large genomic differences between *Moraxella bovoculi* isolates acquired from the eyes of cattle with infectious bovine keratoconjunctivitis versus the deep nasopharynx of asymptomatic cattle. *Vet Res* 47:31. <https://doi.org/10.1186/s13567-016-0316-2>
- Domenis L, Spedicato R, Pepe E, Orusa R, Robetto S (2018) Caseous lymphadenitis caused by *Corynebacterium pseudotuberculosis* in Alpine chamois (*Rupicapra r. rupicapra*): a review of 98 cases. *J Comp Pathol* 161:11–19. <https://doi.org/10.1016/j.jcpa.2018.04.003>
- Dorella FA, Pacheco LG, Oliveira SC, Miyoshi A, Azevedo V (2006) *Corynebacterium pseudotuberculosis*: microbiology, biochemical properties, pathogenesis and molecular studies of virulence. *Vet Res* 37:201–218. <https://doi.org/10.1051/vetres:2005056>
- Egwu G, Faull W, Bradbury J, Clarkson M (1989) Ovine infectious keratoconjunctivitis: a microbiological study of clinically unaffected and affected sheep's eyes with special reference to *Mycoplasma conjunctivae*. *Vet Rec* 125:253–256. <https://doi.org/10.1136/vr.125.10.253>
- Ergonul O (2012) Crimean-Congo hemorrhagic fever virus: new outbreaks, new discoveries. *Curr Opin Virol* 2:215–220. <https://doi.org/10.1016/j.coviro.2012.03.001>
- Escobar LE, Carver S, Cross PC, Rossi L, Almborg ES, Yabsley MJ, Niedringhaus KD, Van Wick P, Dominguez-Villegas E, Gakuya F, Xie Y, Angelone S, Gortázar C, Astorga F (2022) Sarcoptic mange: an emerging panzootic in wildlife. *Transbound Emerg Dis* 69(3):927–942. <https://doi.org/10.1111/tbed.14082>
- Espinosa J, Granados JE, Cano-Manuel FJ, López-Olvera JR, Ráez-Bravo A, Romero D, Soriguer RC, Pérez JM, Fandos P (2017a) *Sarcoptes scabiei* alters follicular dynamics in female Iberian ibex through a reduction in body weight. *Vet Parasitol* 243:151–156. <https://doi.org/10.1016/j.vetpar.2017.06.022>
- Espinosa J, Pérez JM, López-Olvera JR, Ráez-Bravo A, Cano-Manuel FJ, Fandos P, Soriguer RC, Granados JE, Romero D (2017b) Evaluation of oxidant/antioxidant balance in Iberian ibex (*Capra pyrenaica*) experimentally infested with *Sarcoptes scabiei*. *Vet Parasitol* 242:63–70. <https://doi.org/10.1016/j.vetpar.2017.05.027>
- Espinosa J, López-Olvera JR, Cano-Manuel FJ, Fandos P, Pérez JM, López-Graells C, Ráez-Bravo A, Mentaberre G, Romero D, Soriguer RC, Granados JE (2017c) Guidelines for managing captive Iberian ibex herds for conservation purposes. *J Nat Conserv* 40:24–32. <https://doi.org/10.1016/j.jnc.2017.09.002>
- Espinosa J, Ráez-Bravo A, López-Olvera JR, Pérez JM, Lavín S, Tvarijonaviute A, Cano-Manuel FJ, Fandos P, Soriguer RC, Granados JE, Romero D, Velarde R (2017d) Histopathology, microbiology and the inflammatory process associated with *Sarcoptes scabiei* infection in the Iberian ibex. *Capra Pyrenaica Parasites Vectors* 10:596. <https://doi.org/10.1186/s13071-017-2542-5>
- Espinosa J, Pérez JM, Ráez-Bravo A, Fandos P, Cano-Manuel FJ, Soriguer RC, López-Olvera JR, Granados JE (2020) Recommendations for the management of sarcoptic mange in free-ranging Iberian ibex populations. *Animal Biodivers Conserv* 43:137–149. <https://doi.org/10.32800/abc.2020.43.0137>
- Espunyes J, Cabezón O, Pailler-García L, Dias-Alves A, Lobato-Bailón L, Marco I, P. Ribas M, Encinosa-Guzmán PE, Valldeperes M,

- Napp S, (2021) Hotspot of Crimean-Congo hemorrhagic fever virus seropositivity in wildlife, northeastern Spain. *Emerg Infect Dis* 27(9):2480–2484. <https://doi.org/10.3201/eid2709.2111105>
- Estruch J, Serrano E, Valldeperes M, López O, Lavín S, Ruiz-Olmo J, Velarde R (2020) Primer brote de mortalidad asociado a ectima contagioso en cabra montés. XI Reunión de Ungulados Silvestres Ibéricos, Madrid (Spain), October 23rd-24th 2020, p. 30
- Fain A (1968) Etude de la variabilité de *Sarcoptes scabiei* avec une révision des Sarcoptidae. *Acta Zool Pathol Antverp* 47:1–196
- Fain A (1978) Epidemiological problems of scabies. *Int J Dermatol* 17(1):20–30. <https://doi.org/10.1111/j.1365-4362.1978.tb06040.x>
- Falconi C, Oleaga Á, López-Olvera JR, Casais R, Prieto M, Gortázar C (2010) Prevalence of antibodies against selected agents shared between Cantabrian chamois (*Rupicapra pyrenaica parva*) and domestic goats. *Eur J Wildl Res* 56:319–325. <https://doi.org/10.1007/s10344-009-0322-z>
- Falk ES (1982) Scabies. University of Tromso, Norway, Some aspects of its relationship to the immune mechanisms, p 22
- Fandos P (1991) La cabra montés (*Capra pyrenaica*) en el Parque Natural de las Sierras de Cazorla, Segura y Las Villas. ICONA – CSIC, Madrid, 176 pp.
- Fanelli A, Buonavoglia D, Pleite CMC, Tizzani P (2020) Paratuberculosis at European scale: an overview from 2010 to 2017. *Vet Ital* 56(1):13–21. <https://doi.org/10.12834/VetIt.1829.9692.3>
- Fernández-Aguilar X, Cabezón O, Marco I, Mentaberre G, Frey J, Lavín S, López-Olvera JR (2013) *Mycoplasma conjunctivae* in domestic small ruminants from high mountain habitats in northern Spain. *BMC Vet Res* 9:253. <https://doi.org/10.1186/1746-6148-9-253>
- Fernández-Aguilar X, Cabezón Ó, Frey J, Velarde R, Serrano E, Colom-Cadena A, Gelormini G, Marco I, Mentaberre G, Lavín S, López-Olvera JR (2017a) Long-term dynamics of *Mycoplasma conjunctivae* at the livestock-wildlife interface in the Pyrenees. *PLoS One* 12(10):e0186069. <https://doi.org/10.1371/journal.pone.0186069>
- Fernández-Aguilar X, Cabezón Ó, Granados JE, Frey J, Serrano E, Velarde R, Cano-Manuel FJ, Mentaberre G, Ráez-Bravo A, Fandos P, López-Olvera JR (2017b) Post epizootic persistence of asymptomatic *Mycoplasma conjunctivae* infection in Iberian ibex. *Appl Environ Microbiol* 83(15):e00690-e717. <https://doi.org/10.1128/AEM.00690-17>
- Fernández-Aguilar X, Rossi L, Cabezón Ó, Giorgino A, Victoriano-Llopis I, Frey J, López-Olvera JR (2017c) Infectious keratoconjunctivitis and occurrence of *Mycoplasma conjunctivae* and Chlamydiaceae in small domestic ruminants from the Central Karakoram. *Pakistan Vet Rec* 181(9):237. <https://doi.org/10.1136/vr.103948>
- Fernández-Aguilar X, López-Olvera JR, Puig-Ribas M, Begovoeva M, Velarde R, Cardells J, Cabezón Ó (2019) *Mycoplasma conjunctivae* in insect vectors and anatomic locations related to transmission and persistence. *Vet Microbiol* 228(1):7–11. <https://doi.org/10.1016/j.vetmic.2018.11.004>
- Fernández Morán J, Gómez S, Ballesteros F, Quirós P, Benito JL, Feliu C, Nieto JM (1997) Epizootiology of sarcoptic mange in a population of Cantabrian chamois (*Rupicapra pyrenaica parva*) in northwestern Spain. *Vet Parasitol* 73:163–171. [https://doi.org/10.1016/s0304-4017\(97\)00061-7](https://doi.org/10.1016/s0304-4017(97)00061-7)
- Ferrer D, Castellà J, Gutiérrez JF, Lavín S, Marco I (1998) Seroprevalence of *Babesia ovis* in Spanish ibex (*Capra pyrenaica*) in Catalonia, northeastern Spain. *Vet Parasitol* 75:93–98. [https://doi.org/10.1016/s0304-4017\(97\)00199-4](https://doi.org/10.1016/s0304-4017(97)00199-4)
- Ferroglio E, Tolari F, BoIlo E, Bassano B (1998) Isolation of *Brucella melitensis* from Alpine ibex. *J Wildl Dis* 34(2):400–402. <https://doi.org/10.7589/0090-3558-34.2.400>
- Ferroglio E, Nebbia P, Robino P, Rossi L, Rosati S (2000) *Mycobacterium paratuberculosis* infection in two free-ranging Alpine ibex. *Rev Sci Tech OIE* 19(3):859–862. <https://doi.org/10.20506/rst.19.3.1260>
- Foreyt WJ, Jessup DA (1982) Fatal pneumonia of bighorn sheep following association with domestic sheep. *J Wildl Dis* 18(2):163–168. <https://doi.org/10.7589/0090-3558-18.2.163>
- Frosth S, König U, Nyman AK, Pringle M, Aspán A (2015) Characterisation of *Dichelobacter nodosus* and detection of *Fusobacterium necrophorum* and *Treponema* spp. in sheep with different clinical manifestations of footrot. *Vet Microbiol* 179(1–2):82–90. <https://doi.org/10.1016/j.vetmic.2015.02.034>
- Gakuya F, Rossi L, Ombui J, Maingi N, Muchemi G, Ogara W, Soriguer RC, Alasaad S (2011) The curse of the prey: *Sarcoptes* mite molecular analysis reveals potential prey-to-predator parasitic infestation in wild animals from Masai Mara. *Kenya Parasites Vectors* 4:193. <https://doi.org/10.1186/1756-3305-4-193>
- García I, Napp S, Casal J, Perea A, Allepuz A, Alba A, Carbonero A, Arenas A (2009) Bluetongue epidemiology in wild ruminants from southern Spain. *Eur J Wildl Res* 55(2):173–178. <https://doi.org/10.1007/s10344-008-0231-6>
- García JP, Anderson M, Blanchard P, Mete A, Uzal FA (2013) The pathology of enterotoxemia by *Clostridium perfringens* type C in calves. *J Vet Diagn Investig* 25(3):438–442. <https://doi.org/10.1177/1040638713483467>
- García-Bocanegra I, Pérez de Val B, Arenas-Montes A, Paniagua J, Boadella M, Gortázar C, Arenas A (2012a) Seroprevalence and risk factors associated to *Mycobacterium bovis* in wild artiodactyl species from southern Spain, 2006–2010. *PLoS ONE* 7(4):e34908. <https://doi.org/10.1371/journal.pone.0034908>
- García-Bocanegra I, Cabezón Ó, Pabón M, Gómez-Guillamón F, Arenas A, Alcaide E, Salas-Vega R, Dubey JP, Almería S (2012b) Prevalence of *Toxoplasma gondii* and *Neospora caninum* antibodies in Spanish ibex (*Capra pyrenaica hispanica*). *Vet J* 191:257–260. <https://doi.org/10.1016/j.tvjl.2010.11.011>
- Garnier A (2021) Conservation of ibex species (*Capra ibex* et *Capra pyrenaica*) in France: contribution of monitoring data from reintroduced and settled population. Biodiversity and Ecology. Université Paul Sabatier - Toulouse III, France. <https://theses.hal.science/tel-03560035/>
- Gauthier D (1991) La kerato-conjonctivite infectieuse du chamois. Etude épidémiologique dans le département de la Savoie, 1983–1990. DVM Thesis, Université Lyon, France.
- Geary TG (2005) Ivermectin 20 years on: maturation of a wonder drug. *Trends Parasitol* 21(11):530–532. <https://doi.org/10.1016/j.pt.2005.08.014>
- Giacometti M, Janovsky M, Belloy L, Frey J (2002a) Infectious keratoconjunctivitis of ibex, chamois and other Caprinae. *Rev Sci Tech OIE* 21:335–345. <https://doi.org/10.20506/rst.21.2.1338>
- Giacometti M, Janovsky M, Jenny H, Nicolet J, Belloy L, Goldschmidt-Clermont E, Frey J (2002b) *Mycoplasma conjunctivae* infection is not maintained in alpine chamois in eastern Switzerland. *J Wildl Dis* 38:297–304. <https://doi.org/10.7589/0090-3558-38.2.297>
- Giacometti M, Nicolet J, Frey J, Krawinkler M, Meier W, Welle M, Johansson KE, Degiorgis MP (1998) Susceptibility of alpine ibex to conjunctivitis caused by inoculation of a sheep-strain of *Mycoplasma conjunctivae*. *Vet Microbiol* 61:279–288. [https://doi.org/10.1016/s0378-1135\(98\)00186-2](https://doi.org/10.1016/s0378-1135(98)00186-2)
- Giacometti M, Nicolet J, Johansson KE, Naglic T, Degiorgis MP, Frey J (1999) Detection and identification of *Mycoplasma conjunctivae* in infectious keratoconjunctivitis by PCR based on the 16S rRNA gene. *Zentralbl Veterinarmed B* 46(3):173–180. <https://doi.org/10.1046/j.1439-0450.1999.00218.x>
- Gil Collado J (1960) Insectos y ácaros de los animales domésticos. Ed Salvat, Barcelona, Spain, 555 pp.

- Gobierno de Aragón (2022) Resolución de 29 de junio de 2022, del Director de Calidad y Seguridad Alimentaria, por la que se establece el protocolo de actuación ante el brote de sarna sarcóptica en cabra montés (*Capra pyrenaica*) en Aragón. https://www.aragon.es/documents/20127/3979473/Resolucion_SARNA_20220203.pdf/b5b223f6-01d8-1cc9-fc05-cce32a55788d?t=1644243287483
- Gobierno de España (2003) Ley 8/2003, de 24 de abril, de sanidad animal. Boletín Oficial del Estado 99, BOE-A-2003-8510. <https://boe.es/buscar/pdf/2003/BOE-A-2003-8510-consolidado.pdf>
- Gobierno de España, Ministerio de Agricultura, Pesca y Alimentación (1996) Real Decreto 2611/1996, de 20 de diciembre, por el que se regulan los programas nacionales de erradicación de enfermedades de 105 animales. Boletín Oficial del Estado 307, 38115–38133. <https://www.boe.es/boe/dias/1996/12/21/pdfs/A38115-38133.pdf>
- Gobierno de España, Ministerio de Medio Ambiente, y Medio Rural y Marino (2009) Real Decreto 1082/2009, de 3 de julio, por el que se establecen los requisitos de sanidad animal para el movimiento de animales de explotaciones cinegéticas, de acuicultura continental y de núcleos zoológicos, así como de animales de fauna silvestre. Boletín Oficial del Estado 177, BOE-A-2009-12206, <https://www.boe.es/buscar/pdf/2009/BOE-A-2009-12206-consolidado.pdf>
- Gobierno de España, Ministerio de Agricultura, Alimentación y Medio Ambiente (2014) Real Decreto 526/2014, de 20 de junio, por el que se establece la lista de las enfermedades de los animales de declaración obligatoria y se regula su notificación. Boletín Oficial del Estado 167, BOE-A-2014-7291. <https://www.boe.es/buscar/pdf/2014/BOE-A-2014-7291-consolidado.pdf>
- Gobierno de España, Ministerio de Agricultura, Pesca y Alimentación (2022) Plan Nacional de Vigilancia Sanitaria en Fauna Silvestre. https://www.mapa.gob.es/es/ganaderia/temas/sanidad-animal-higiene-ganadera/pnvs2022_tcm30-437517.pdf
- Gómez-Guillamón E, Díaz-Cao JM, Camacho-Sillero L, Cano-Terriza D, Alcaide EM, Cabezón Ó, Arenas A, García-Bocanegra I (2020) Spatiotemporal monitoring of selected pathogens in Iberian ibex (*Capra pyrenaica*). *Transbound Emerg Dis* 67(5):2259–2265. <https://doi.org/10.1111/tbed.13576>
- Gómez-Guillamón F, Caballero-Gómez J, Agüero M, Camacho-Sillero L, Risalde MÁ, Zorrilla I, Villalba R, Rivero-Juárez A, García-Bocanegra I (2021) Re-emergence of bluetongue virus serotype 4 in Iberian ibex (*Capra pyrenaica*) and sympatric livestock in Spain, 2018–2019. *Transbound Emerg Dis* 68(2):458–466. <https://doi.org/10.1111/tbed.13696>
- Gómez-Olivencia A, Arceredillo D, Ríos-Garaizar J, Garate D, Iriarte E, San Pedro Z (2011) Dental anomalies in the mandible of *Capra pyrenaica*: presence of two permanent fourth premolars in a Pleistocene wild goat from Arlanpe Cave (Bizkaia, Northern Spain). *Int J Osteoarchaeol* 23:737–745. <https://doi.org/10.1002/oa.1295>
- Gonzalez G, Crampe JP (2001) Mortality patterns in a protected population of isards (*Rupicapra pyrenaica*). *Can J Zool* 79:2072–2079. <https://doi.org/10.1139/cjz-79-11-2072>
- González-Candela M, León-Vizcaíno L (1999) Sarna sarcóptica en la población de arrui (*Ammotragus lervia*) del Parque Regional de Sierra Espuña. *Murcia Galemys* 11(2):43–58
- González-Candela M, León-Vizcaíno L, Cubero-Pablo MJ (2004) Population effects of sarcoptic mange in Barbary sheep (*Ammotragus lervia*) from Sierra Espuña Regional Park. *Spain J Wildl Dis* 40(3):456–465. <https://doi.org/10.7589/0090-3558-40.3.456>
- González-Candela M, Cubero M, Martín-Atance P, León L (2006) Potential pathogens carried by Spanish ibex (*Capra pyrenaica hispanica*) in southern Spain. *J Wildl Dis* 42(2):325–334. <https://doi.org/10.7589/0090-3558-42.2.325>
- González-Candela M, Serrano E, Martínez-Carrasco C, Martín-Atance P, Cubero MJ, Alonso F, León L (2009) Coinfection is an important factor in epidemiological studies: the first serosurvey of the aoudad (*Ammotragus lervia*). *Eur J Clin Microbiol Infect Dis* 28:481–489. <https://doi.org/10.1007/s10096-008-0654-8>
- González-Candela M, Verbisck-Bucker G, Martín-Atance P, Cubero-Pablo MJ, León-Vizcaíno L (2007) Mycoplasmas isolated from Spanish ibex (*Capra pyrenaica hispanica*): frequency and risk factors. *Vet Rec* 161(5):167–168. <https://doi.org/10.1136/vr.161.5.167>
- González-Insa N (2021) Estudio seroepidemiológico de distintas enfermedades compartidas entre rumiantes domésticos y silvestres del Parque Natural de Cazorla, Segura y las Villas. Master Thesis. Máster Universitario en Gestión de la Fauna Silvestre, Universidad de Murcia, Murcia, Spain
- González-Quirós P, Silva Manzano P, Solano Rodríguez S (2002a) Demographic patterns during an epizootic of sarcoptic mange in a Cantabrian chamois (*Rupicapra pyrenaica parva*) population. *Pirineos* 157:199–200. <https://doi.org/10.3989/pirineos.2002.v157.71>
- González-Quirós P, Silva Manzano P, Solano Rodríguez S (2002b) Population evolution of Cantabrian chamois (*Rupicapra pyrenaica parva*) with sarcoptic mange (*Sarcoptes scabiei*) in centre-eastern Asturias (northwest Spain). *Pirineos* 157:201–210. <https://doi.org/10.3989/pirineos.2002.v157.72>
- Gortázar C, Ferroglio E, Höfle U, Frölich K, Vicente J (2007) Diseases shared between wildlife and livestock: a European perspective. *Eur J Wildl Res* 53:241–256. <https://doi.org/10.1007/s10344-007-0098-y>
- Gortázar C, Ruiz-Fons JF, Höfle U (2016) Infections shared with wildlife: an updated perspective. *Eur J Wildl Res* 62:511–525. <https://doi.org/10.1007/s10344-016-1033-x>
- Granados JE, Pérez JM, Chiroso M, Ruiz-Martínez I (1996a) Aspectos de la biología de la pupación de *Oestrus caucasicus* Grunin (Diptera: Oestridae). VII Congreso Ibérico de Entomología, Santiago de Compostela, Spain, 203 pp.
- Granados JE, Ruiz-Martínez I, Pérez P-A, JM, (1996b) Experiencias de mantenimiento de cabra montés en cautividad. *Bulletin D'informations Sur La Pathologie Des Animaux Sauvages (BIPAS)* 15:59–67
- Granados JE, Pérez JM, Márquez FJ, Serrano E, Soriguer RC, Fandos P (2001) La cabra montés (*Capra pyrenaica*, Schinz 1838). *Galemys* 13(1):3–37
- Granados JE, Cano-Manuel FJ, Fandos P, Pérez JM, Alasaad S, Sarasa M, Collantes-Fuentes S, Castro I, Palanco L, García-Sánchez S, González D, Soriguer RC (2011) Uso de la termografía para determinar el grado de infestación por *Sarcoptes scabiei* en ejemplares de cabra montés (*Capra pyrenaica*) en el P.N. de Sierra Nevada. 29èmes Rencontres du Groupe d'Etudes sur l'Ecopathologie de la Faune Sauvage de Montagne, Nerja (Spain), October 6th–9th, 2011.
- Granados JE, Ros-Candeira A, Pérez-Luque AJ, Moreno-Llorca R, Cano-Manuel FJ, Fandos P, Soriguer RC, Espinosa Cerrato J, Pérez Jiménez JM, Ramos B, Zamora R (2020) Long-term monitoring of the Iberian ibex population in the Sierra Nevada of the southeast Iberian Peninsula. *Scientific Data* 7:203. <https://doi.org/10.1038/s41597-020-0544-1>
- Guberti V, Zamboni L (2000) Can the host resistance hypothesis explain the cyclic patterns observed in *Sarcoptes scabiei* in chamois (*Rupicapra rupicapra*)? *Parassitologia* 42(Supplement 1):72
- Haas C, Rossi S, Meier R, Ryser-Degiorgis MP (2015a) Evaluation of a commercial ELISA for the detection of antibodies to *Sarcoptes scabiei* in wild boar (*Sus scrofa*). *J Wildl Dis* 51(3):729–733. <https://doi.org/10.7589/2014-09-222>
- Haas C, Origgí FC, Akdesir E, Batista-Linhares M, Giovannini S, Mavrot F, Casaubon J, Ryser-Degiorgis MP (2015b) First detection of sarcoptic mange in free-ranging wild boar (*Sus scrofa*) in Switzerland.

- Schweiz Arch Tierheilkd 157:269–275. <https://doi.org/10.17236/sat00020>
- Haas C, Origgi FC, Rossi S, López-Olvera JR, Rossi L, Castillo-Contreras R, Malmsten A, Dalin AM, Orusa R, Robetto S, Pignata L, Lavín S, Ryser Degiorgis MP (2018) Serological survey in wild boar (*Sus scrofa*) in Switzerland and other European countries: *Sarcoptes scabiei* may be more widely distributed than previously thought. BMC Vet Res 14:117. <https://doi.org/10.1186/s12917-018-1430-3>
- Hars J, Rautureau S, Jaÿ M, Game Y, Gauthier D, Herbaux JP, Le Horgne JM, Maucci E, Pasquier JJ, Vaniscotte A, Mick V, Garin-Bastuji B (2013) Un foyer de brucellose chez les ongulés sauvages du massif du Bargy en Haute-Savoie. Bulletin Epidémiologique Santé Anim Alim Anses-DGAL 60:2–7
- Hars J, Rautureau S, Vaniscotte A, Herbaux JP, Pasquier D, Depecker A, Le Bourg V, Game Y, Toïgo C, Mick V, Garin-Bastuji B (2015) La brucellose des bouquetins du massif du Bargy (Haute-Savoie): où en est-on en 2015 ? Bulletin Epidémiologique Santé Anim Alim Anses-DGAL 70:14–18
- Herd RP, Sams RA, Ashcraft SM (1996) Persistence of ivermectin in plasma and faeces following treatment of cows with ivermectin sustained-release, pour-on or injectable formulations. Int J Parasitol 26:1087–1093. [https://doi.org/10.1016/S0020-7519\(96\)80007-5](https://doi.org/10.1016/S0020-7519(96)80007-5)
- Holzwarth N, Pospischil A, Mavrot F, Vilei EM, Hilbe M, Zlinszky K, Regenscheit N, Pewsner M, Thoma R, Borel N (2011) Occurrence of *Chlamydiaceae*, *Mycoplasma conjunctivae*, and *pestiviruses* in Alpine Chamois (*Rupicapra r. rupicapra*) of Grisons, Switzerland) J Vet Diagn Invest 23:333. <https://doi.org/10.1177/104063871102300223>
- Iacopelli F, Fanelli A, Tizzani P, Berriatua E, Prieto P, Martínez-Carrasco C, León L, Rossi L, Candela MG (2020) Spatio-temporal patterns of sarcoptic mange in red deer and Iberian ibex in a multi-host natural park. Res Vet Sci 128:224–229. <https://doi.org/10.1016/j.rvsc.2019.11.014>
- Ibrahim KEE, Abu-Samra MT (1987) Experimental transmission of a goat strain of *Sarcoptes scabiei* to desert sheep and its treatment with ivermectin. Vet Parasitol 26(1–2):157–164. [https://doi.org/10.1016/0304-4017\(87\)90085-9](https://doi.org/10.1016/0304-4017(87)90085-9)
- Illarieti T, Acevedo P, Alves P, Jung TS, Kierdorf H, Lach G, López-Olvera J, Putman R, Scandura M, Vallinoto M, Gortázar C (2023) 18 years of the European Journal of Wildlife Research: profile and prospects. Eur J Wildl Res 69:8. <https://doi.org/10.1007/s10344-022-01635-1>
- Jiménez-Ruiz S, Rivalde MA, Acevedo P, Arnal MC, Gómez-Guillamón F, Prieto P, Gens MJ, Cano-Terriza D, Fernández de Luco D, Vicente J, García-Bocanegra I (2021) Serosurveillance of Schmallenberg virus in wild ruminants in Spain. Transbound Emerg Dis 68(2):347–354. <https://doi.org/10.1111/tbed.13680>
- Junta de Andalucía (2015) Informe Programa de Vigilancia Epidemiológica de cabra montés (*Capra pyrenaica hispanica*). Temporadas de caza 2009/2012 a 2012/2015. <https://www.juntadeandalucia.es/medioambiente/portal/areas-tematicas/biodiversidad-y-vegetacion/fauna-amenazada/seguimiento-de-fauna/programa-de-vigilancia-epidemiologica-de-la-fauna-silvestre-en-andalucia>
- Junta de Andalucía (2021) Resolución de 25 de mayo de 2021, de la Dirección General de Medio Natural, Biodiversidad y Espacios Protegidos, por la que se declara Área de Emergencia Cinegética temporal por sarna sarcóptica en cabra montés, en varios términos municipales de las provincias de Almería, Cádiz, Granada, Jaén, Málaga y Sevilla. Boletín Oficial de la Junta de Andalucía 103:139–146. <https://www.juntadeandalucia.es/boja/2021/103/38>
- Kock RA, Orynbayev M, Robinson S, Zuther S, Singh NJ, Beauvais W, Morgan ER, Kerimbayev A, Khomenko S, Martineau HM, Rystaeva R, Omarova Z, Wolfs S, Hawotte F, Radoux J, Milner-Gulland EJ (2018) Saigas on the brink: multidisciplinary analysis of the factors influencing mass mortality events. Sci Adv 4(1):eaao2314. <https://doi.org/10.1126/sciadv.aao2314>
- Kutzer E (1966) Zur epidemiologie der Sarcoptesräude. Angew Parasitol 7:241–248
- Lalli PN, Morgan MS, Arlian LG (2004) Skewed Th1/Th2 immune response to *Sarcoptes scabiei*. J Parasitol 90(4):711–714. <https://doi.org/10.1645/GE-214R>
- Lambert S, Gilot-Fromont E, Toïgo C, Marchand P, Petit E, Garin-Bastuji B, Gauthier D, Gaillard JM, Rossi S, Thébault A (2020) An individual-based model to assess the spatial and individual heterogeneity of *Brucella melitensis* transmission in Alpine ibex. Ecol Model 425:109009. <https://doi.org/10.1016/j.ecolmodel.2020.109009>
- Lambert S, Thébault A, Rossi S, Marchand P, Petit E, Toïgo C, Gilot-Fromont E (2021) Targeted strategies for the management of wildlife diseases: the case of brucellosis in Alpine ibex. Vet Res 52:116. <https://doi.org/10.1186/s13567-021-00984-0>
- Lambert S, Gilot-Fromont E, Toïgo C, Marchand P, Petit E, Rossi S, Thébault A (2022) Combining seroprevalence and capture-mark-recapture data to estimate the force of infection of brucellosis in a managed population of Alpine ibex. Epidemics 38:100542. <https://doi.org/10.1016/j.epidem.2022.100542>
- Lastras ME, Pastor J, Marco I, Ruiz M, Viñas L, Lavín S (2000) Effects of sarcoptic mange on serum proteins and immunoglobulin G levels in chamois (*Rupicapra pyrenaica*) and Spanish ibex (*Capra pyrenaica*). Vet Parasitol 88(3):313–319. [https://doi.org/10.1016/s0304-4017\(99\)00221-6](https://doi.org/10.1016/s0304-4017(99)00221-6)
- Lavín S, Marco I, Rossi L, Meneguz PG, Viñas L (1997) Haemonchosis in Spanish ibex. J Wildl Dis 33(3):656–659. <https://doi.org/10.7589/0090-3558-33.3.656>
- Lavín S, Ruiz-Bascarán M, Marco I, Fondevila MD, Ramis AJ (2000a) Experimental infection of chamois (*Rupicapra pyrenaica parva*) with *Sarcoptes scabiei* derived from naturally infected goats. Zoonoses Public Health 47(9):693–699. <https://doi.org/10.1046/j.1439-0450.2000.00406.x>
- Lavín S, Lastras ME, Marco I, Cabañes FX (2000b) Report of a case of bronchopneumonia associated with *Moraxella bovis* isolation in a chamois (*Rupicapra pyrenaica*). J Vet Med B 47:225–227. <https://doi.org/10.1046/j.1439-0450.2000.00332.x>
- Lavín S, Ruiz-Bascarán M, Marco I, Abarca ML, Crespo MJ, Franch J (2004) Foot infections associated with *Arcanobacterium pyogenes* in free-living fallow deer (*Dama dama*). J Wildl Dis 40(3):607–611. <https://doi.org/10.7589/0090-3558-40.3.607>
- Lawson B, Neimanis A, Lavazza A, López-Olvera JR, Tavernier P, Billinis C, Duff P, Mladenov DT, Rijks JM, Savić S, Wibbelt G, Ryser-Degiorgis MP, Kuiken T (2021) How to start up a national wildlife health surveillance programme. Animals 11:2543. <https://doi.org/10.3390/ani11092543>
- León-Vizcaíno L, Astorga R, Escós J, Alonso F, Alados C, Contreras A, Cubero MJ (1992) Epidemiología de la sarna sarcóptica en el Parque Natural de las Sierras de Cazorla, Segura y Las Villas. In: Proceedings of the International Congress on the Genus *Capra* in Europe. Sevilla: Junta Rectora del Parque Natural Sierra de las Nieves, Consejería de Medio Ambiente, Junta de Andalucía, Spain, pp. 95–99.
- León-Vizcaíno L, Ruíz de Ybáñez MR, Cubero MJ, Ortíz JM, Espinosa J, Pérez L, Simón MA, Alonso F (1999) Sarcoptic mange in Spanish ibex from Spain. J Wildl Dis 35(4):647–659. <https://doi.org/10.7589/0090-3558-35.4.647>
- León-Vizcaíno L, Cubero MJ, González-Capitel E, Simón MA, Pérez L, Ruiz de Ybáñez MR, Ortiz JM, González-Candela M, Alonso F (2001) Experimental ivermectin treatment of sarcoptic mange and establishment of a mange-free population of Spanish ibex. J Wildl Dis 37:775–785. <https://doi.org/10.7589/0090-3558-37.4.775>
- León Vizcaíno L, Garrido Abellán F, González Candela M, Pérez Béjar L, Cubero Pablo MJ, Perales Flores A, Pacheco I, Martín Atance

- P (2008a) Ineficacia de los rumiantes silvestres como reservorios de *Brucella* en los ambientes naturales de las sierras béticas. XXXIII Jornadas Científicas SEOC 1, 331–334. https://www.juntadeandalucia.es/export/drupaljda/1337161080ovinotecnia_baja.pdf
- León Vizcaíno L, Garrido Abellán F, González Candela M, Cubero Pablo MJ, Martín Atance P (2008b) Infecciones de evolución crónica comunes entre rumiantes domésticos y silvestres en las sierras béticas. XXXIII Jornadas Científicas SEOC 1, 335–338. https://www.juntadeandalucia.es/export/drupaljda/1337161080ovinotecnia_baja.pdf
- León Vizcaíno L, González Candela M, Verbisk-Bucker G, Perales Flores A, Cubero Pablo MJ, Martín Atance P, Garrido Abellán F (2008c) Estudios en masa sobre infecciones que causan queratoconjuntivitis entre rumiantes domésticos y silvestres en las sierras béticas XXXIII Jornadas Científicas SEOC 1, 339–342. https://www.junta.deandalucia.es/export/drupaljda/1337161080ovinotecnia_baja.pdf
- León Vizcaíno L, Alonso de Vega F, Garrido Abellán F, González Candela M, Martínez Carrasco-Pleite C, Pérez Béjar L, Cubero Pablo MJ, Ruiz de Ybáñez Carnero R, Arenas Casas A (2008d) Estudio en masa sobre infecciones que causan mortalidad perinatal congénita entre rumiantes domésticos y silvestres en las sierras béticas. XXXIII Jornadas Científicas SEOC 1, 325–330. https://www.juntadeandalucia.es/export/drupaljda/1337161080ovinotecnia_baja.pdf
- Loison A, Gaillard J-M, Jullien J (1996) Demographic patterns after an epizootic of keratoconjunctivitis in a chamois population. *J Wildl Manage* 60(3):517–527. <https://doi.org/10.2307/3802069>
- López-Olvera JR, Höfle U, Vicente J, Fernández-de-Mera IG, Gortázar C (2006) Effects of parasitic helminths and ivermectin treatment on clinical parameters in the European wild boar (*Sus scrofa*). *Parasitol Res* 98(6):582–587. <https://doi.org/10.1007/s00436-005-0099-2>
- López-Olvera JR, Vidal D, Vicente J, Pérez M, Luján L, Gortázar C (2009) Serological survey of selected infectious diseases in mouflon (*Ovis aries musimon*) from south-central Spain. *Eur J Wildl Res* 55:75–79. <https://doi.org/10.1007/s10344-008-0215-6>
- López-Olvera JR, Serrano E, Armenteros A, Pérez JM, Fandos P, Carvalho J, Velarde R, Cano-Manuel FJ, Ráez-Bravo A, Espinosa J, Soriguer RC, Granados JE (2015) Sex-biased severity of sarcoptic mange at the same biological cost in a sexually dimorphic ungulate. *Parasites Vectors* 8(1):583. <https://doi.org/10.1186/s13071-015-1186-6>
- Lorca-Oró C, López-Olvera JR, Ruiz-Fons F, Acevedo P, García-Bocanegra I, Oleaga Á, Gortázar C, Pujols J (2014) Long-term dynamics of bluetongue virus in wild ruminants: relationship with outbreaks in livestock in Spain, 2006–2011. *PLoS One* 9(6):e0100027. <https://doi.org/10.1371/journal.pone.0100027>
- Lorca-Oró C, Pujols J, Arenas A, Gómez-Guillamón F, Zorrilla I, Domingo M, Arenas-Montes A, Ruano MJ, García-Bocanegra I (2011) Epidemiological surveillance of bluetongue virus serotypes 1, 4 and 8 in Spanish ibex (*Capra pyrenaica hispanica*) in southern Spain. *Vet Microbiol* 149(1–2):230–235. <https://doi.org/10.1016/j.vetmic.2010.10.023>
- Lorca-Oró C, Pujols J, García-Bocanegra I, Mentaberre G, Granados JE, Solanes D, Fandos P, Galindo I, Domingo M, Lavín S, López-Olvera JR (2012) Protection of Spanish ibex (*Capra pyrenaica*) against bluetongue virus serotypes 1 and 8 in a subclinical experimental infection. *PLoS ONE* 7(5):e36380. <https://doi.org/10.1371/journal.pone.0036380>
- Manceau V, Crampe JP, Boursot P, Taberlet P (1999) Identification of evolutionary significant units in the Spanish wild goat, *Capra pyrenaica* (Mammalia, Artiodactyla). *Anim Conserv* 2:33–39. <https://doi.org/10.1111/j.1469-1795.1999.tb00046.x>
- Marco I, Velarde R, Castellà J, Ferrer D, Lavín S (2000) Presumptive *Babesia ovis* infection in a Spanish ibex (*Capra pyrenaica*). *Vet Parasitol* 87:217–221. [https://doi.org/10.1016/s0304-4017\(99\)00170-3](https://doi.org/10.1016/s0304-4017(99)00170-3)
- Marco I, Ruiz M, Juste R, Garrido JM, Lavín S (2002) Paratuberculosis in free-ranging fallow deer in Spain. *J Wildl Dis* 38(3):629–632. <https://doi.org/10.7589/0090-3558-38.3.629>
- Martín-Monedero I, Fandos-Paris P, Macías-García H, Fandos-Guzmán G, García-Lara R, Ramos-Losada B, López-Olvera JR, Soriguer-Escofet RC, Pérez-Jiménez JM, Aleix-Mata G, Cano-Manuel León FJ, Granados-Torres JE (2022) Análisis de la influencia del clima en la epizootia de sarna sarcóptica que afecta a la población de cabra montés de Sierra Nevada. 39º Encuentro GEEFSM, Groupe d'Étude sur l'Écopathologie de la Faune Sauvage de Montagne – (2022) Libro de resúmenes. UCOPress Editorial Universidad de Córdoba, Córdoba, Spain, p 19
- Martínez IZ, Oleaga Á, Sojo I, García-Iglesias MJ, Pérez-Martínez C, García Marín JF, Balseiro A (2020) Immunohistochemical assessment of immune response in the dermis of *Sarcoptes scabiei*-infested wild carnivores (wolf and fox) and ruminants (chamois and red deer). *Animals* 10(7):1146. <https://doi.org/10.3390/ani10071146>
- Matsuyama R, Yabusaki T, Senjyu N, Okano T, Baba M, Tsuji-Matsukane T, Yokoyama M, Kido N, Kadosaka T, Kato T, Suzuki M, Asano M (2019) Possible transmission of *Sarcoptes scabiei* between herbivorous Japanese serows and omnivorous Caniformia in Japan: a cryptic transmission and persistence? *Parasites Vectors* 12:389. <https://doi.org/10.1186/s13071-019-3630-5>
- Mavrot FM, Vilei E, Marreros N, Signer C, Ryser-Degiorgis MP (2012) Occurrence, quantification, and genotyping of *Mycoplasma conjunctivae* in wild Caprinae with and without infectious keratoconjunctivitis. *J Wildl Dis* 48:619–631. <https://doi.org/10.7589/0090-3558-48.3.619>
- Mayer D, Degiorgis MP, Meier W, Nicolet J, Giacometti M (1997) Lesions associated with infectious keratoconjunctivitis in Alpine ibex. *J Wildl Dis* 33:413–419. <https://doi.org/10.7589/0090-3558-33.3.413>
- McCarthy JS, Kemp DJ, Walton SF, Currie BJ (2004) Scabies: more than just an irritation. *Postgrad Med J* 80(945):382–387. <https://doi.org/10.1136/pgmj.2003.014563>
- Mellanby K (1944) The development of symptoms, parasitic infection and immunity in human scabies. *Parasitol* 35(4):197–206. <https://doi.org/10.1017/S0031182000021612>
- Mellanby K, Johnson CG, Bartley WC, Brown P (1942) Experiments on the survival and behaviour of the itch mite, *Sarcoptes scabiei* DeG. var. *hominis*. *Bull Entomol Res* 33(4):267–271. <https://doi.org/10.1017/S0007485300026584>
- Mellor PS, Wittmann EJ (2002) Bluetongue virus in the Mediterranean Basin 1998–2001. *Vet J* 164:20–37. <https://doi.org/10.1053/vj.2002.0713>
- Mentaberre G, Serrano E, Velarde R, Marco I, Lavín S (2010) Absence of TB in Iberian ibex (*Capra pyrenaica*) in a high-risk area. *Vet Rec* 166:700. <https://doi.org/10.1136/vr.c2552>
- Mentaberre G, Romero B, de Juan L, Navarro-González N, Velarde R, Mateos A, Marco I, Olivé-Boix X, Domínguez L, Lavín S, Serrano E (2014) Long-term assessment of wild boar harvesting and cattle removal for bovine tuberculosis control in free ranging populations. *PLoS ONE* 9(2):e88824. <https://doi.org/10.1371/journal.pone.0088824>
- Mentaberre G, Velarde R, García-Readigòs MA, Serrano E, Jovaní J, Olivé-Boix X, López-Olvera JR, Castillo R, Ruiz-Olmo J, Lavín S (2015) Nuevo brote de sarna sarcóptica en la cabra montés (*Capra pyrenaica*). In: 33èmes Rencontres du Groupe d'Étude sur l'Eco-pathologie de la Faune Sauvage de Montagne 20 R. García-González et al. (GEEFSM). 21–24 May 2015, Balme, Valli di Lanzo, Italy, p. 15
- Menzano A, Rambozzi L, Rossi L (2004) Outbreak of scabies in human beings, acquired from chamois (*Rupicapra rupicapra*). *Vet Rec* 155(18):568. <https://doi.org/10.1136/vr.155.18.568>

- Menzano A, Rambozzi L, Rossi L (2007) A severe episode of wild-life derived scabies in domestic goats in Italy. *Small Rumin Res* 70(2):154–158. <https://doi.org/10.1016/j.smallrumres.2006.02.010>
- Mertens PP, Diprose J, Maan S, Singh KP, Attoui H, Samuel AR (2004) Bluetongue virus replication, molecular and structural biology. *Vet Ital* 40(4):426–437
- Mika A, Reynolds SL, Mohlin FC, Willis C, Swe PM, Pickering DA, McMillan D, Sriprakash KS, Kemp DJ, Fischer K (2012) Novel scabies mite serpins inhibit the three pathways of the human complement system. *PLoS ONE* 7(7):e40489. <https://doi.org/10.1371/journal.pone.0040489>
- Millán J, Casáis R, Delibes-Mateos M, Calvete C, Rouco C, Castro F, Colomar V, Casas-Díaz E, Ramírez E, Moreno S, Prieto JM, Villafuerte R (2012) Widespread exposure to *Sarcoptes scabiei* in wild European rabbits (*Oryctolagus cuniculus*) in Spain. *Vet Parasitol* 183(3):323–329. <https://doi.org/10.1016/j.vetpar.2011.07.046>
- Mitra M, Mahanta SK, Sen S, Ghosh C, Hati AK (1995) Transmission of *Sarcoptes scabiei* from animal to man and its control. *J Indian Med Assoc* 93(4):142–143
- Moraga-Fernández A, Ruiz-Fons F, Habela MÁ, Royo-Hernández L, Calero-Bernal R, Gortazar C, de la Fuente J, Fernández de Mera IG (2021) Detection of new Crimean-Congo haemorrhagic fever virus genotypes in ticks feeding on deer and wild boar. *Spain Transbound Emerg Dis* 68(3):993–1000. <https://doi.org/10.1111/tbed.13756>
- Moroni B, Valldeperes M, Serrano E, López-Olvera JR, Lavín S, Rossi L (2020) Comment on: “The treatment of sarcoptic mange in wildlife: a systematics review.” *Parasites Vectors* 13:471. <https://doi.org/10.1186/s13071-020-04347-0>
- Moroni B, Angelone S, Pérez JM, Molinar Min AR, Pasquetti M, Tizzani P, López-Olvera JR, Valldeperes M, Granados JE, Lavín S, Mentaberre G, Camacho-Sillero L, Martínez-Carrasco C, Oleaga A, Candela M, Meneguz PG, Rossi L (2021) Sarcoptic mange in wild ruminants in Spain: solving the epidemiological enigma using microsatellite markers. *Parasites Vectors* 14:171. <https://doi.org/10.1186/s13071-021-04673-x>
- Moroni B, Granados Torres JE, López-Olvera JR, Espinosa Cerrato J, Ráez Bravo A, Metaberre G, Fandos P, Pazzi M, Romagnoli M, Gardini G, Rossi L, Valldeperes M, Serrano E, Ramos B, Odore R (2022a) Ivermectin plasma concentration in Iberian ibex (*Capra pyrenaica*) following oral administration: a pilot study. *Front Vet Sci* 9:830157. <https://doi.org/10.3389/fvets.2022.830157>
- Moroni B, Rossi L, Bernigaud C, Guillot J (2022b) Zoonotic episodes of scabies: a global overview. *Pathogens* 11:213. <https://doi.org/10.3390/pathogens11020213>
- Morsy TA, Bakr ME, Ahmed MM, Kotb MM (1994) Human scabies acquired from a pet puppy. *J Egypt Soc Parasitol* 24(2):305–308
- Mounsey K, Harvey RJ, Wilkinson V, Takano K, Old J, Stannard H, Wicker L, Phalen D, Carver S (2022) Drug dose and animal welfare: important considerations in the treatment of wild-life. *Parasitol Res* 121:1065–1071. <https://doi.org/10.1007/s00436-022-07460-4>
- Mounsey KE, Willis C, Burgess ST, Holt DC, McCarthy J, Fischer K (2012) Quantitative PCR-based genome size estimation of the astigmatid mites *Sarcoptes scabiei*, *Psoroptes ovis* and *Dermatophagoides pteronyssinus*. *Parasites Vectors* 5:3. <https://doi.org/10.1186/1756-3305-5-3>
- Muñoz PM, Boadella M, Arnal M, de Miguel MJ, Revilla M, Martínez D, Vicente J, Acevedo P, Oleaga A, Ruiz-Fons F, Marín CM, Prieto JM, de la Fuente J, Barral M, Barberán M, Fernández de Luco D, Blasco JM, Gortázar C (2010) Spatial distribution and risk factors of brucellosis in Iberian wild ungulates. *BMC Infect Dis* 10:46. <https://doi.org/10.1186/1471-2334-10-46>
- Muzafar M, Calvo-Bado LA, Green LE, Smith EM, Russell CL, Grogono-Thomas R, Wellington EMH (2015) The role of the environment in transmission of *Dichelobacter nodosus* between ewes and their lambs. *Vet Microbiol* 179:53–59. <https://doi.org/10.1016/j.vetmic.2015.04.010>
- Næsborg-Nielsen C, Wilkinson V, Mejia-Pacheco N, Carver S (2022) Evidence underscoring immunological and clinical pathological changes associated with *Sarcoptes scabiei* infection: synthesis and meta-analysis. *BMC Infect Dis* 22:658. <https://doi.org/10.1186/s12879-022-07635-5>
- Nakagawa TLDR, Takai Y, Kubo M, Sakai H, Masegi T, Yanai T (2009) A pathological study of sepsis associated with sarcoptic mange in raccoon dogs (*Nyctereutes procyonoides*) in Japan. *J Comp Pathol* 141(2–3):177–181. <https://doi.org/10.1016/j.jcpa.2009.05.003>
- Navarro-González N, Porrero MC, Mentaberre G, Serrano E, Mateos A, Cabal A, Domínguez L, Lavín S (2015) *Escherichia coli* O157:H7 in wild boars (*Sus scrofa*) and Iberian ibex (*Capra pyrenaica*) sharing pastures with free-ranging livestock in a natural environment in Spain. *Vet Q* 35(2):102–106. <https://doi.org/10.1080/01652176.2015.1023404>
- Negredo A, de la Calle-Prieto F, Palencia-Herrejón E, Mora-Rillo M, Astray-Mochales J, Sánchez-Seco MP, Bermejo Lope z E, Menárguez J, Fernández-Cruz A, Sánchez-Artola B, Keough-Delgado E, Ramírez de Arellano E, Lasala F, Milla J, Fraile JL, Ordoñas Gavín M, Martínez de la Gándara A, López Perez L, Diaz-Diaz D, López-García MA, Delgado-Jimenez P, Martín-Quirós A, Trigo E, Figueira JC, Manzanares J, Rodríguez-Baena E, García-Comas L, Rodríguez-Fraga O, García-Arenzana N, Fernández-Díaz MV, Cornejo VM, Emmerich P, Schmidt-Chanasit J, Arribas JR, for the Crimean Congo Hemorrhagic Fever@Madrid Working Group (2017) Autochthonous Crimean-Congo hemorrhagic fever in Spain. *N Engl J Med* 377:154–161. <https://doi.org/10.1056/NEJMoa1615162>
- Negredo A, Sánchez-Arroyo R, Díez-Fuertes F, de Ory F, Budiño MA, Vázquez A, Garcinuño A, Hernández L, de la Hoz GC, Gutiérrez-Arroyo A, Grande C (2018) Sánchez-Seco P (2021a) Fatal case of Crimean-Congo hemorrhagic fever caused by reassortant virus, Spain. *Emerg Infect Dis* 27(4):1211–1215. <https://doi.org/10.3201/eid2704.203462>
- Negredo A, Sánchez-Ledesma M, Llorente F, Pérez-Olmeda M, Belhassen-García M, González-Calle D, Sánchez-Seco MP (2013) Jiménez-Clavero MA (2021b) Retrospective identification of early autochthonous case of Crimean-Congo hemorrhagic fever, Spain. *Emerg Infect Dis* 27(6):1754–1756. <https://doi.org/10.3201/eid2706.204643>
- Nicolet J, Freundt EA (1975) Isolation of *Mycoplasma conjunctivae* from chamois and sheep affected with kerato-conjunctivitis. *Zoonoses Public Health* 22(4):302–307. <https://doi.org/10.1111/j.1439-0450.1975.tb00591.x>
- Niedringhaus KD, Brown JD, Sweeley KM, Yabsley MJ (2019) A review of sarcoptic mange in North American wildlife. *Int J Parasitol Parasites Wildl* 9:285–297. <https://doi.org/10.1016/j.ijppaw.2019.06.003>
- Nolan J, Schnitzerling HJ, Bird P (1985) The use of ivermectin to cleanse tick infested cattle. *Aust Vet J* 62(11):386–388. <https://doi.org/10.1111/j.1751-0813.1985.tb14219.x>
- Nores C, González-Quirós P (2009) Demographic changes caused by sarcoptic mange in the Cantabrian chamois (*Rupicapra pyrenaica parva*) in Asturias (North of Spain). In: Pérez-Barbería FJ, Palacios B (eds) *El rebeco cantábrico Rupicapra pyrenaica parva*. Conservación y gestión de sus poblaciones. Ministerio de Medio Ambiente y Medio Rural y Marino, Madrid, Spain, pp. 338–359.
- Obber F, Celva R, Libanora M, Da Rold G, Dellamaria D, Partel P, Ferraro E, Calabrese MS, Morpurgo L, Pisano SRR, Citterio CV, Cassini R (2022) Description of a sarcoptic mange outbreak in Alpine chamois using an enhanced surveillance approach. *Animals* 12:2077. <https://doi.org/10.3390/ani12162077>

- Old JM, Skelton CJA, Stannard HJ (2021) The use of Cydectin® by wildlife carers to treat sarcoptic mange in free-ranging bare-nosed wombats (*Vombatus ursinus*). *Parasitol Res* 120(3):1077–1090. <https://doi.org/10.1007/s00436-020-07012-8>
- Oleaga A, Casais R, González Quirós P, Prieto M, Gortázar C (2008) Sarcoptic mange in red deer from Spain: improved surveillance or disease emergence? *Vet Parasitol* 154:103–113. <https://doi.org/10.1016/j.vetpar.2008.03.002>
- Oleaga A, Casais R, Balseiro A, Espí A, Llana L, Hartasánchez A, Gortázar C (2011) New techniques for an old disease: sarcoptic mange in the Iberian wolf. *Vet Parasitol* 181:255–266. <https://doi.org/10.1016/j.vetpar.2011.04.036>
- Osman KM, Ali HA, ElJakee JA, Galal HM (2013) Prevalence of *Chlamydomphila psittaci* infections in the eyes of cattle, buffaloes, sheep and goats in contact with a human population. *Transbound Emerg Dis* 60:245–251. <https://doi.org/10.1111/j.1865-1682.2012.01337.x>
- Palomares F, Ruiz-Martínez I (1993) Status and conservation perspectives for the Spanish ibex population (*Capra pyrenaica* Schinz, 1838) of Sierra Mágina Natural Park. *Z Jagdwiss* 39:87–94. <https://doi.org/10.1007/BF02285321>
- Pastor J, Bach E, Ráez-Bravo A, López-Olvera JR, Tvarijonavičiute A, Granados JE, Espinosa J, Pérez JM, Lavín S, Cuenca R (2019) Method validation, reference values and characterization of acute phase proteins response to experimentally induced inflammation and bluetongue virus infection in Iberian ibex. *Vet Clin Pathol* 48(4):695–701. <https://doi.org/10.1111/vcp.12802>
- Pence DB, Casto SD, Samuel WM (1975) Variation in the chaetotaxy and denticulation of *Sarcoptes scabiei* (Acarina: Sarcoptidae) from wild canids. *Acarologia* 17(1):160–165
- Pence DB, Ueckermann E (2002) Sarcoptic mange in wildlife. *Rev Sci Tech OIE* 21(2):385–398
- Pérez JM, Ruiz Martínez I, Palomares F (1992) Impacto de la sarna sarcóptica sobre la cabra montés (*Capra pyrenaica*) del Parque Natural de Sierra Mágina (Jaén). Datos sobre prevalencia y mortalidad. *Actas del Congreso Internacional del género Capra en Europa*. Junta Rectora del Parque Natural de la Sierra de las Nieves, Málaga, Spain, pp. 239–241.
- Pérez JM, Granados JE, Soriguer RC (1994) Population dynamic of the Spanish ibex *Capra pyrenaica* in Sierra Nevada Natural Park (southern Spain). *Acta Teriol (warsz)* 39:289–294. <https://doi.org/10.4098/AT.arch.94-32>
- Pérez JM, Granados JE, Gómez F, Pérez MC, Ruiz-Martínez I (1996a) Las parasitosis de la cabra montés de Sierra Nevada (Granada). 1st International Conference Sierra Nevada, Conservación y Desarrollo Sostenible, March 20th to 22nd 1996. Granada, Spain 3:31–45
- Pérez JM, Granados JE, Ruiz SRC, I, (1996b) Prevalence and seasonality of *Oestrus caucasicus* Grunin, 1948 (Diptera: Oestridae) parasitizing the Spanish ibex, *Capra pyrenaica* (Mammalia: Artiodactyla). *J Parasitol* 82:233–236. <https://doi.org/10.2307/3284152>
- Pérez JM, Ruiz I, Chiroso M (1996c) Management of sarcoptic mange and host populations. The case of the Spanish ibex from Sierra Nevada. *Bulletin D'information Sur La Pathologie Des Animaux Sauvages (BIPAS)* 15:69–76
- Pérez JM, Ruiz-Martínez I, Granados JE, Soriguer RC, Fandos P (1997a) The dynamics of sarcoptic mange in the ibex population of Sierra Nevada in Spain—influence of climatic factors. *J Wildl Res* 2(1):86–89
- Pérez JM, Granados JE, Bueno L, Moreno V (1997b) Las miasis en los ungulados silvestres. *Ovis* 49:89–106
- Pérez JM, Granados JE, Soriguer RC, Fandos P, Márquez FJ, Crampe JP (2002) Distribution, status and conservation problems of the Spanish ibex, *Capra pyrenaica* (Mammalia: Artiodactyla). *Mamm Rev* 32:26–39. <https://doi.org/10.1046/j.1365-2907.2002.00097.x>
- Pérez JM, Granados JE, Pérez MC, Márquez FJ, Ferroglio E, Rossi L (2003) A survey of the gastrointestinal nematodes of Spanish ibex (*Capra pyrenaica*) in a high mountain habitat. *J Parasitol* 89:315–318. [https://doi.org/10.1645/0022-3395\(2003\)089\[0315:ASOTGN\]2.0.CO;2](https://doi.org/10.1645/0022-3395(2003)089[0315:ASOTGN]2.0.CO;2)
- Pérez JM, Meneguz PG, Dematteis A, Rossi L, Serrano E (2006) Parasites and conservation biology: the 'ibex-ecosystem.' *Biodivers Conserv* 15:2033–2047. <https://doi.org/10.1007/s10531-005-0773-9>
- Pérez JM, Granados JE, Sarasa M, Serrano E (2011a) Usefulness of estimated surface area of damaged skin as a proxy of mite load in the monitoring of sarcoptic mange in free-ranging populations of Iberian wild goat. *Capra Pyrenaica Vet Parasitol* 176(2):258–264. <https://doi.org/10.1016/j.vetpar.2010.11.002>
- Pérez JM, Serrano E, González-Candela M, León-Vizcaíno L, Barberá CG, de Simón MA, Fandos P, Granados JE, Soriguer RC, Festa-Bianchet M (2011b) Reduced horn size in two wild trophy-hunted species of Caprinae. *Wildl Biol* 17:102–112. <https://doi.org/10.2981/09-102>
- Pérez JM, Serrano E, Soriguer RC, González FJ, Sarasa M, Granados JE, Cano-Manuel FJ, Cuenca R, Fandos P (2015) Distinguishing disease effects from environmental effects in a mountain ungulate: seasonal variation in body weight, hematology, and serum chemistry among Iberian ibex (*Capra pyrenaica*) affected by sarcoptic mange. *J Wildl Dis* 51(1):148–156. <https://doi.org/10.7589/2014-01-008>
- Pérez JM, Castro I, Granados JE, Cano-Manuel FJ, Fandos P, Espinosa J, Soriguer RC (2017) Does *Sarcoptes scabiei* synchronize its breeding cycle with that of the Iberian ibex, *Capra pyrenaica*? *Int J Acarol* 43(3):199–203. <https://doi.org/10.1080/01647954.2016.1272634>
- Pérez JM, Granados JE, Espinosa J, Ráez-Bravo A, López-Olvera JR, Rossi L, Meneguz PG, Angelone S, Fandos P, Soriguer RC (2021) Biology and management of sarcoptic mange in wild Caprinae populations. *Mamm Rev* 51:82–94. <https://doi.org/10.1111/mam.12213>
- Pérez JM, López-Montoya AJ, Cano-Manuel FJ, Soriguer RC, Fandos P, Granados JE (2022) Development of resistance to sarcoptic mange in ibex. *J Wildl Manage* 86(5):e22224. <https://doi.org/10.1002/jwmg.22224>
- Petersen HH, Nielsen JP, Heegaard PMH (2004) Application of acute phase protein measurements in veterinary clinical chemistry. *Vet Res* 35(2):163–187. <https://doi.org/10.1051/vetres:2004002>
- Pisano S, Ryser-Degiorgis M, Rossi L, Peano A, Keckeis K (2018) Roosje P (2019) Sarcoptic mange of fox origin in multiple farm animals and scabies in humans, Switzerland. *Emerg Infect Dis* 25(6):1235–1238. <https://doi.org/10.3201/eid2506.181891>
- Pizzato F (2017) Paratuberculosis: prevalence and epidemiological role of Iberian ibex (*Capra pyrenaica*). Master Thesis. Máster Universitario en Gestión de la Fauna Silvestre, Universidad de Murcia, Murcia, Spain
- Posautz A, Loncaric I, Kübber-Heiss A, Knoll A, Walzer C (2014) Acute die-off of chamois (*Rupicapra rupicapra*) in the Eastern Austrian Alps due to bacterial bronchopneumonia with Pasteurellaceae. *J Wildl Dis* 50(3):616–620. <https://doi.org/10.7589/2013-04-090>
- Pound JM, Miller JA, George JE, Oehler DD, Harmel DE (1996) Systemic treatment of white-tailed deer with ivermectin-medicated bait to control free-living populations of lone star ticks (Acari:Ixodidae). *J Med Entomol* 33(3):385–394. <https://doi.org/10.1093/jmedent/33.3.385>
- Prada C, Herrero J (2013) Viabilidad del hábitat y del reforzamiento poblacional de *Capra pyrenaica* en la Reserva Nacional de Caza de Os Ancares. *Pirineos* 168:59–76. <https://doi.org/10.3989/Pirineos.2013.168004>
- Puigdemont A, Brazís P, Fondati S, Ferrer L (2002) Diagnóstico serológico de la sarna sarcóptica en el perro. *Consult Difusión Vet*

- 89:71–73. https://saludanimal.leti.com/es/diagnostico-serologico-de-la-sarna-sarcoptica-en-el-perro_1204.pdf
- Ráez-Bravo A (2019) Pathophysiology of sarcoptic mange in Iberian ibex. PhD Thesis, Universitat Autònoma de Barcelona, Bellaterra, Barcelona, Spain. 138 pp.
- Ráez-Bravo A, Granados JE, Cerón JJ, Cano-Manuel FJ, Fandos P, Pérez JM, Espinosa J, Soriguer RC, López-Olvera JR (2015) Acute phase proteins increase with sarcoptic mange status and severity in Iberian ibex (*Capra pyrenaica*, Schinz 1838). *Parasitol Res* 114(11):4005–4010. <https://doi.org/10.1007/s00436-015-4628-3>
- Ráez-Bravo A, Granados JE, Serrano E, Dellamaria D, Casais R, Rossi L, Puigdemont A, Cano-Manuel FJ, Fandos P, Pérez JM, Espinosa J, Soriguer RC, Citterio C, López-Olvera JR (2016) Evaluation of three enzyme linked immunosorbent assays for sarcoptic mange diagnosis and assessment in the Iberian ibex. *Capra Pyrenaica Parasites Vectors* 9(1):558. <https://doi.org/10.1186/s13071-016-1843-4>
- Rahbari S, Nabian S, Bahonar AR (2009) Some observations on sheep sarcoptic mange in Tehran province. *Iran Trop Anim Health Prod* 41(3):397–401. <https://doi.org/10.1007/s11250-008-9203-9>
- Rahman MM, Lecchi C, Fraquelli C, Sartorelli P, Cecilian F (2010) Acute phase protein response in Alpine ibex with sarcoptic mange. *Vet Parasitol* 168(3):293–298. <https://doi.org/10.1016/j.vetpar.2009.12.001>
- Rambozzi L, Menzano A, Lavín S, Rossi L (2004) Biotin-avidin amplified ELISA for detection of antibodies to *Sarcoptes scabiei* in chamois (*Rupicapra* spp.). *Vet Res* 35(6):701–708. <https://doi.org/10.1051/vetres:2004039>
- Ramírez-Rosales E (2018) Dynamics of *Mycoplasma conjunctivae* at the wildlife-livestock interface in the Natural Space of Sierra Nevada (Spain). Master Thesis. Máster Universitario en Gestión de la Fauna Silvestre, Universidad de Murcia, Murcia, Spain.
- Rasero R, Rossi L, Soglia D, Maione S, Sacchi P, Rambozzi L, Sartore S, Soriguer RC, Spalenza V, Alasaad S (2010) Host taxon-derived *Sarcoptes* mite in European wild animals revealed by microsatellite markers. *Biol Conserv* 143(5):1269–1277. <https://doi.org/10.1016/j.biocon.2010.03.001>
- Refoyo P, Olmedo C, Barba M, Muñoz B (2016) Parasite load in the Iberian ibex, *Capra pyrenaica victoriae*. *Arxius de Miscel·lània Zoològica* 14:108–113. <https://doi.org/10.32800/amz.2016.14.0108>
- Rentería-Solís Z, Min AM, Alasaad S, Müller K, Michler FU, Schmäsckke R, Wittstatt U, Rossi L, Wibbelt G (2014) Genetic epidemiology and pathology of raccoon-derived *Sarcoptes* mites from urban areas of Germany. *Med Vet Entomol* 28(Suppl. 1):98–103. <https://doi.org/10.1111/mve.12079>
- Revilla Calavia M (2012) Estudio sanitario de la cabra montés *Capra pyrenaica hispanica* en Aragón. PhD Thesis, Universidad de Zaragoza, Zaragoza, Spain.
- Reyes-García R, Pérez-de-la-Lastra JM, Vicente J, Ruiz-Fons F, Garrido JM, Gortázar C (2008) Large-scale ELISA testing of Spanish red deer for paratuberculosis. *Vet Immunol Immunopathol* 124(1–2):75–81. <https://doi.org/10.1016/j.vetimm.2008.01.032>
- Rodríguez-Cadenas F, Carbajal-González MT, Fregeneda-Grandes JM, Aller-Gancedo JM, Rojo-Vázquez FA (2010) Clinical evaluation and antibody responses in sheep after primary and secondary experimental challenges with the mange mite *Sarcoptes scabiei* var. *ovis*. *Vet Immunol Immunopathol* 133(2):109–116. <https://doi.org/10.1016/j.vetimm.2009.07.004>
- Rodríguez JL, Poveda JB, Rodríguez F, Espinosa de los Monteros A, Ramírez AS, Fernández A, (1996) Ovine infectious keratoconjunctivitis caused by *Mycoplasma agalactiae*. *Small Rum Res* 22(1):93–96. [https://doi.org/10.1016/0921-4488\(96\)00857-7](https://doi.org/10.1016/0921-4488(96)00857-7)
- Rossi L, Marco I, Meneguz PG (1994) Nematodes of the digestive tract of *Capra pyrenaica*: preliminary contribution. In: Catalino MA, Zulueta J, Meneguz PG, Rossi L. *Actas del Congreso Internacional del género Capra en Europa*. Junta Rectora del Parque Natural de la Sierra de las Nieves, Málaga, Spain, pp. 249–251.
- Rossi L, Fraquelli C, Vesco U, Permunian R, Somavilla GM, Carmignola G, Da Pozzo R, Meneguz PG (2007) Descriptive epidemiology of a scabies epidemic in chamois in the Dolomite Alps. *Italy Eur J Wildl Res* 53(2):131–141. <https://doi.org/10.1007/s10344-006-0067-x>
- Rossi L, Tizzani P, Rambozzi L, Moroni B, Meneguz PG (2019) Sanitary emergencies at the wild/domestic caprines interface in Europe. *Animals* 9:922. <https://doi.org/10.3390/ani9110922>
- Rowe ML, Whiteley PL, Carver S (2019) The treatment of sarcoptic mange in wildlife: a systematic review. *Parasites Vectors* 12:99. <https://doi.org/10.1186/s13071-019-3340-z>
- Rudolph KM, Hunter DL, Rimler RB, Cassire EF, Foreyt WJ, DeLong WJ, Weiser GC, Ward ACS (2007) Microorganisms associated with a pneumonic epizootic in Rocky Mountain bighorn sheep (*Ovis canadensis canadensis*). *J Zoo Wildl Med* 38(4):548–558. <https://doi.org/10.1638/2006-0027R.1>
- Ruiz Martínez I, Lasso de la Vega B, Pérez Jiménez JM (1992) Datos preliminares sobre la prevalencia de la oestrosis en la cabra montés del parque natural de la Sierra de las Nieves. Málaga, Spain, pp 253–255
- Ruiz Martínez I, Madero A, Chiroso M (1993) La sarna podría regular las poblaciones de cabra montés. *Quercus* 86:20–22
- Ruiz Martínez I, Pérez JM, Chiroso M, Norman C, Soriguer RC, Fandos P (1996) Plan de manejo y gestión de la cabra montés (*Capra pyrenaica*) ante la epizootia de sarcoptidosis en el Parque Natural de Sierra Nevada (Granada, España). 1st International Conference Sierra Nevada, Conservación y Desarrollo Sostenible, Granada, Spain, March 20th to 22nd 1996, volume 3, pp. 47–68.
- Ruiz-Rodríguez C (2018) Seroprevalencia y factores de riesgo de tuberculosis, paratuberculosis y fiebre Q en la cabra montés (*Capra pyrenaica*) del Espacio Natural de Sierra Nevada y en ganado ovino y caprino simpátrico. Master Thesis. Máster Universitario en Gestión de la Fauna Silvestre, Universidad de Murcia, Murcia, Spain.
- Ryser-Degiorgis MP, Bischof DF, Marreros N, Willis C, Signer C, Filli F, Brosi G, Frey J, Vilei EM (2009) Detection of *Mycoplasma conjunctivae* in the eyes of healthy, free-ranging Alpine ibex: possible involvement of Alpine ibex as carriers for the main causing agent of infectious keratoconjunctivitis in wild Caprinae. *Vet Microbiol* 134:368–374. <https://doi.org/10.1016/j.vetmic.2008.08.005>
- Rzewuska M, Kwiecień E, Chrobak-Chmiel D, Kizerwetter-Świda M, Stefańska I, Gieryńska M (2019) Pathogenicity and virulence of *Trueperella pyogenes*: a review. *Int J Mol Sci* 20(11):2737. <https://doi.org/10.3390/ijms20112737>
- Saito MU, Sonoda Y (2017) Symptomatic raccoon dogs and sarcoptic mange along an urban gradient. *EcoHealth* 14:318–328. <https://doi.org/10.1007/s10393-017-1233-1>
- Saleh MA, Mahran OM, Bassam Al-Salahy M (2011) Circulating oxidative stress status in dromedary camels infested with sarcoptic mange. *Vet Res Commun* 35:35–45. <https://doi.org/10.1007/s11259-010-9450-x>
- Salvadori C, Rocchigiani G, Lazzarotti C, Formenti N, Trogu T, Lanfranchi P, Zanardello C, Citterio C, Poli A (2016) Histological lesions and cellular response in the skin of Alpine chamois (*Rupicapra r. rupicapra*) spontaneously affected by sarcoptic mange. *BioMed Res Int*, Article ID 3575468, 8 pages. <https://doi.org/10.1155/2016/3575468>
- Samuel WM (1981) Attempted experimental transfer of sarcoptic mange (*Sarcoptes scabiei*, Acarina: Sarcoptidae) among red fox, coyote, wolf and dog. *J Wildl Dis* 17(3):343–347. <https://doi.org/10.7589/0090-3558-17.3.343>
- Sánchez MA (1998) Plan de Conservación de la cabra montés en la Región de Murcia. Dirección General del Medio Natural.

- Consejería de Medio Ambiente, Agricultura y Agua de Murcia, Murcia, Spain.
- Sánchez-Isarría MA, Hermoso J, Theureau de la Peña J, Casanova G, Burgui JM, Sanchís G, Arévalo P, Sánchez R (2008a) Metodología empleada en la estrategia del control de la sarna sarcóptica en la cabra montés de la Reserva Valenciana de Caza de la Muela de Cortes entre los años 2002–2007 (Valencia). In: Granados JE, Cano-Manuel FJ, Fandos P, Cadenas de Llano R (eds) Tendencias actuales en el Estudio y Conservación de los caprinos europeos. Junta de Andalucía, Granada, Spain, pp. 255–268.
- Sánchez-Isarría MA, Hermoso J, Theureau de la Peña J, Casanova G, Burgui JM, Sanchís G, Arévalo P, Sánchez R (2008b) La ivermectina como tratamiento de la sarna sarcóptica en el medio natural: vías de aplicación. In: Granados JE, Cano-Manuel FJ, Fandos P, Cadenas de Llano R (eds) Tendencias actuales en el Estudio y Conservación de los caprinos europeos. Junta de Andalucía, Granada, Spain, pp. 269–276.
- Sánchez-Seco MP, Sierra MJ, Estrada-Peña A, Valcárcel F, Molina R, Ramírez de Arellano E, Olmeda AS, García San Miguel L, Jiménez M, Romero LJ, Negro A, Group for CCHFv Research (2022) Widespread detection of multiple strains of Crimean-Congo hemorrhagic fever virus in ticks. *Spain Emerg Infect Dis* 28(2):394–402. <https://doi.org/10.3201/eid2802.211308>
- Sarasa M, Rambozzi L, Rossi L, Meneguz PG, Serrano E, Granados JE, González FJ, Fandos P, Soriguer RC, Gonzalez G, Joachim J, Pérez JM (2010) *Sarcoptes scabiei*: specific immune response to sarcoptic mange in the Iberian ibex *Capra pyrenaica* depends on previous exposure and sex. *Exp Parasitol* 124(3):265–271. <https://doi.org/10.1016/j.exppara.2009.10.008>
- Sarasa M, Serrano E, Soriguer RC, Granados JE, Fandos P, Gonzalez G, Joachim J, Pérez JM (2011) Negative effect of the arthropod parasite, *Sarcoptes scabiei*, on testes mass in Iberian ibex. *Capra Pyrenaica Vet Parasitol* 175(3):306–312. <https://doi.org/10.1016/j.vetpar.2010.10.024>
- Seleem MN, Boyle SM, Sriranganathan N (2010) Brucellosis: a re-emerging zoonosis. *Vet Microbiol* 140:392–398. <https://doi.org/10.1016/j.vetmic.2009.06.021>
- Serrano E, Granados JE, Pérez JM (2007) Sarcoptic mange and metapodial development in growing male Iberian ibex (*Capra pyrenaica*). *Vet Parasitol* 144(3):375–379. <https://doi.org/10.1016/j.vetpar.2006.10.010>
- Simpson K, Johnson CN, Carver S (2016) *Sarcoptes scabiei*: the mange mite with mighty effects on the common wombat (*Vombatus ursinus*). *PLoS ONE* 11(3):e0149749. <https://doi.org/10.1371/journal.pone.0149749>
- Solanet JJ, Malena R, Estein SM, Belchior SE, Paolicchi FA, Tract AB (2011) Desarrollo de una prueba de ELISA para detectar anticuerpos en carneros vacunados o infectados con *Corynebacterium pseudotuberculosis*. *Rev Argent Microbiol* 43(9):17
- Sommer C, Steffansen B, Nielsen BO, Grønvold J, Jensen KMV, Jespersen JB, Springborg J, Nansen P (1992) Ivermectin excreted in cattle dung after subcutaneous injection or pour-on treatment: concentrations and impact on dung fauna. *Bull Entomol Res* 82:257–264. <https://doi.org/10.1017/S0007485300051804>
- Sosa FE, Bertoni EA, Micheloud JF, Medina Vallejo DMN, Olmos LH, Florin-Christensen M, Romero SR (2022) Occurrence of sarcoptic mange in free-ranging vicuñas (*Vicugna vicugna*) of the Andean high plateau region of Argentina. *Parasitol Res* 121:1587–1595. <https://doi.org/10.1007/s00436-022-07506-7>
- Spengler JR, Bergeron É, Rollin PE (2016) Seroepidemiological studies of Crimean-Congo hemorrhagic fever virus in domestic and wild animals. *PLoS Negl Trop Dis* 10:e0004210. <https://doi.org/10.1371/journal.pntd.0004210>
- Spengler JR, Bente DA (2017) Crimean-Congo hemorrhagic fever in Spain — new arrival or silent resident? *N Engl J Med* 377(2):106–108. <https://doi.org/10.1056/NEJMp1707436>
- Spyrou V, Valiakos G (2015) Orf virus infection in sheep or goats. *Vet Microbiol* 181(1–2):178–182. <https://doi.org/10.1016/j.vetmic.2015.08.010>
- Süld K, Tammeleht E, Valdmann H, Saarma U (2017) Severe impact of sarcoptic mange on the movements and space use for one of its most important vector species, the raccoon dog. *Vet Parasitol* 247:67–70. <https://doi.org/10.1016/j.vetpar.2017.05.029>
- Swe PM, Zakrzewski M, Kelly A, Krause L, Fischer K (2014) Scabies mites alter the skin microbiome and promote growth of opportunistic pathogens in a porcine model. *PLOS Negl Trop Dis* 8(5):e2897. <https://doi.org/10.1371/journal.pntd.0002897>
- Tabashnik BE (1994) Evolution of resistance to *Bacillus thuringiensis*. *Ann Rev Entomol* 39:47–49. <https://doi.org/10.1146/annurev.en.39.010194.000403>
- Tarigan S (2014) Antibody response in naïve and sensitised goats infested by *Sarcoptes scabiei*. *Indonesian Journal of Animal and Veterinary Sciences* 9(4):258–265
- Terada Y, Murayama N, Ikemura H, Morita T, Nagata M (2010) *Sarcoptes scabiei* var *canis* refractory to ivermectin treatment in two dogs. *Vet Dermatol* 21:608–612. <https://doi.org/10.1111/j.1365-3164.2010.00895.x>
- Turchetto S, Obber F, Permunián R, Vendrami S, Lorenzetto M, Ferré N, Stancampiano L, Rossi L, Citterio CV (2014) Spatial and temporal explorative analysis of sarcoptic mange in Alpine chamois (*Rupicapra r. rupicapra*). *Hystrix* 25(1):25–30. <https://doi.org/10.4404/hystrix-25.1-9460>
- Ueda T, Tarui H, Kido N, Imaizumi K, Hikosaka K, Abe T, Minegishi D, Tada Y, Nakagawa M, Tanaka S, Omiya T, Morikaku K, Kawahara M, Kikuchi-Ueda T, Akuta T, Ono Y (2019) The complete mitochondrial genome of *Sarcoptes scabiei* var. *nyctereutis* from the Japanese raccoon dog: prediction and detection of two transfer RNAs (tRNA-A and tRNA-Y). *Genomics* 111:1183–1191. <https://doi.org/10.1111/mve.12079>
- Uzal FA, Kelly WR (1996) Enterotoxaemia in goats. *Vet Res Commun* 20:481–492. <https://doi.org/10.1007/BF00396291>
- Valldeperes M, Granados JE, Gregorio M, Prieto P, Escribano F, Cardells J, Foj R, Puigdemont A, Fandos P, Ráez-Bravo A, Espinosa J, Pérez JM, Soriguer R, López-Olvera JR (2018a) Serological survey of sarcoptic mange in Mediterranean Iberian ibex (*Capra pyrenaica*) populations. In: 13th conference of the European Wildlife Disease Association, August 27th to September 1st 2018a, Larissa, Greece, p. 18071
- Valldeperes M, Granados JE, Mentaberre G, Prieto P, Escribano F, Cardells J, Foj R, Puigdemont A, Fandos P, Ráez-Bravo A, Espinosa J, Pérez JM, Lizana V, Soriguer R, López-Olvera JR (2018b) Estudio serológico de la sarna sarcóptica en las poblaciones mediterráneas de cabra montés (*Capra pyrenaica*). IX meeting of the Red de Ungulados Silvestres Ibéricos, October 4th to 6th, 2018b, Capileira, Spain.
- Valldeperes M, Granados JE, Pérez JM, Castro I, Ráez-Bravo A, Fandos P, López-Olvera JR, Serrano E, Mentaberre G (2019) How sensitive and specific is the visual diagnosis of sarcoptic mange in free-ranging Iberian ibexes? *Parasites Vectors* 12:405. <https://doi.org/10.1186/s13071-019-3665-7>
- Valldeperes M, Moroni B, Rossi L, López-Olvera JR, Velarde R, Molinar Min AR, Mentaberre G, Serrano E, Angelone S, Lavín S, Granados JE (2021) First report of interspecific transmission of sarcoptic mange from Iberian ibex to wild boar. *Parasites Vectors* 14:481. <https://doi.org/10.1186/s13071-021-04979-w>
- Valldeperes M, Rossi L, López-Olvera JR, Moroni B, Gardini G, Odore R, Granados-Torres JE, Mentaberre G (2022a) Uso de pienso medicado con ivermectina para el control de la sarna sarcóptica en una población de cabra montés (*Capra pyrenaica*) de vida libre. 39^{èmes} Rencontres du Groupe d'Étude sur l'Écopathologie de la Faune Sauvage de Montagne (GEEFSM). Libro de resúmenes. UCOPress, Editorial Universidad de Córdoba, Córdoba, Spain, p. 15.

- Vallderperes M, Rossi L, Mentaberre G, Moroni B, Gardini G, Odore R, Granados-Torres JE, López-Olvera JR (2022b) Un comensal inesperado: detección de ivermectina en jabalíes (*Sus scrofa*) simpátricos con una población de cabra montés (*Capra pyrenaica*) afectada por sarna sarcóptica y tratada con pienso medicado. 39èmes Rencontres du Groupe d'Étude sur l'Écopathologie de la Faune Sauvage de Montagne (GEEFSM). Libro de resúmenes. UCO-Press, Editorial Universidad de Córdoba, Córdoba, Spain, p. 44.
- Van Neste DJJ (1986) Immunology of scabies. *Parasitol Today* 2:194–196. [https://doi.org/10.1016/0169-4758\(86\)90192-4](https://doi.org/10.1016/0169-4758(86)90192-4)
- Varela-Castro L, Lara-Vergara J, Ortega N, Salinas J, Colom-Cadena A, Lavín S, Tizzani P, Velarde R, Serrano E, Mentaberre G (2017) Endemic caseous lymphadenitis in a wild Caprinae population. *Vet Rec* 180(16):405. <https://doi.org/10.1136/vr.103925>
- Varela-Castro L, Zuddas C, Ortega N, Serrano E, Salinas J, Castellà J, Castillo-Contreras R, Carvalho J, Lavín S, Mentaberre G (2018) On the possible role of ticks in the eco-epidemiology of *Coxiella burnetii* in a Mediterranean ecosystem. *Ticks Tick-Borne Dis* 9:687–694. <https://doi.org/10.1016/j.ttbdis.2018.02.014>
- Vela AI, Mentaberre G, Lavín S, Domínguez L, Fernández-Garayzábal JF (2016) *Streptococcus caprae* sp. nov., isolated from Iberian ibex (*Capra pyrenaica hispanica*). *Int J Syst Evol Microbiol* 66:196–200. <https://doi.org/10.1099/ijsem.0.000697>
- Velarde R, Mentaberre G, Sánchez J, Marco I, Lavín S (2008) KIT-positive gastrointestinal stromal tumours in two Spanish ibex (*Capra pyrenaica hispanica*). *Vet J* 177:445–447. <https://doi.org/10.1016/j.tvjl.2007.06.013>
- Verbisck-Bucker G, González-Candela M, Galián J, Cubero-Pablo MJ, Martín-Atance P, León-Vizcaíno L (2008) Epidemiology of *Mycoplasma agalactiae* infection in free-ranging Spanish ibex (*Capra pyrenaica*) in Andalusia, southern Spain. *J Wildl Dis* 44(2):369–380. <https://doi.org/10.7589/0090-3558-44.2.369>
- Verbisck G, González-Candela M, Cubero MJ, León L, Serrano E, Perales A (2010) *Mycoplasma agalactiae* in Iberian ibex (*Capra pyrenaica*) in Spain. *Vet Rec* 167(11):425–426. <https://doi.org/10.1136/vr.c4908>
- Verdú JR, Cortez V, Ortiz AJ, González-Rodríguez E, Martínez-Pinna J, Lumarte JP, Lobo JM, Numa C, Sánchez-Piñero F (2015) Low doses of ivermectin cause sensory and locomotor disorders in dung beetles. *Sci Rep* 5:13912. <https://doi.org/10.1038/srep13912>
- Verdú JR, Cortez V, Martínez-Pinna J, Ortiz AJ, Lumarte JP, Lobo JM, Sánchez Piñero F, Numa C (2018) First assessment of the comparative toxicity of ivermectin and moxidectin in adult dung beetles: sub-lethal consequences. *Sci Rep* 8:14885. <https://doi.org/10.1038/s41598-018-33241-0>
- Vermut JJ, West DM, Pomroy WE (1996) Inefficacy of moxidectin and doramectin against ivermectin-resistant *Cooperia* spp. of cattle in New Zealand. *N Z Vet J* 44:188–193. <https://doi.org/10.1080/00480169.1996.35971>
- Vigal CR, Machordom A (1987) Dental and skull anomalies in the Spanish wild goat, *Capra pyrenaica* Schinz, 1838. *Zeitschrift Für Säugetierkunde* 52:38–50
- Vilei EM, Bonvin-Klotz L, Zimmermann L, Ryser-Degiorgis MP, Giacometti M, Frey J (2007) Validation and diagnostic efficacy of a TaqMan real-time PCR for the detection of *Mycoplasma conjunctivae* in the eyes of infected Caprinae. *J Microbiol Methods* 70:384–386. <https://doi.org/10.1016/j.mimet.2007.05.007>
- Walter B, Heukelbach J, Fengler G, Worth C, Hengge U, Feldmeier H (2011) Comparison of dermoscopy, skin scraping, and the adhesive tape test for the diagnosis of scabies in a resource-poor setting. *Arch Dermatol* 147(4):468–473. <https://doi.org/10.1001/archdermatol.2011.51>
- Walton SF, Choy JL, Bonson A, Valle A, McBroom J, Taplin D, Arlian L, Mathews JD, Currie B, Kemp DJ (1999) Genetically distinct dog-derived and human-derived *Sarcoptes scabiei* in scabies-endemic communities in northern Australia. *Am J Trop Med Hyg* 61(4):542–547. <https://doi.org/10.4269/ajtmh.1999.61.542>
- Walton SF, Holt DC, Currie BJ, Kemp DJ (2004) Scabies: new future for a neglected disease. *Adv Parasitol* 57:309–376. [https://doi.org/10.1016/S0065-308X\(04\)57005-7](https://doi.org/10.1016/S0065-308X(04)57005-7)
- Walton SF, Currie BJ (2007) Problems in diagnosing scabies, a global disease in human and animal populations. *Clin Microbiol Rev* 20(2):268–279. <https://doi.org/10.1128/CMR.00042-06>
- Windsor PA (2015) Paratuberculosis in sheep and goats. *Vet Microbiol* 181(1–2):161–169. <https://doi.org/10.1016/j.vetmic.2015.07.019>
- Wobeser GA (1994) Investigation and management of disease in wild mammals. Plenum Press, New York-London, p 265
- Wobeser GA (2002) Disease management strategies for wildlife. *Rev Sci Tech OIE* 21(1):159–178. <https://doi.org/10.20506/rst.21.1.1326>
- Yang Y, Li Y, Dao X, Fei L, Yang F (2022) Molecular detection and isolation of *Mycoplasma conjunctivae* from goats with infectious keratoconjunctivitis in Sichuan province, southwest China. *The Thai Journal of Veterinary Medicine* 52(3): 601–606. <https://he01.tci-thaijo.org/index.php/tjvm/article/view/258657>
- Ytrehus B, Bretten T, Bergsjø B, Isaksen K (2008) Fatal pneumonia epizootic in musk ox (*Ovibos moschatus*) in a period of extraordinary weather conditions. *EcoHealth* 5:213–223. <https://doi.org/10.1007/s10393-008-0166-0>
- Zahler M, Essig A, Gothe R, Rinder H (1999) Molecular analyses suggest monospecificity of the genus *Sarcoptes* (Acari: Sarcoptidae). *Int J Parasitol* 29(5):759–766. [https://doi.org/10.1016/s0020-7519\(99\)00034-x](https://doi.org/10.1016/s0020-7519(99)00034-x)
- Zimmermann L, Jambresic S, Giacometti M, Frey J (2008) Specificity of *Mycoplasma conjunctivae* strains for alpine chamois *Rupicapra r. rupicapra*. *Wildl Biol* 14:118–124. [https://doi.org/10.2981/0909-6396\(2008\)14\[118:SOMCSF\]2.0.CO;2](https://doi.org/10.2981/0909-6396(2008)14[118:SOMCSF]2.0.CO;2)

Publisher's Note Springer Nature remains neutral with regard to jurisdictional claims in published maps and institutional affiliations.