



12CNIT-2022 - FULL PAPER

## **Calculation of intercepted photosynthetically active radiation (IPAR) for traditional crops in Castilla y León, Spain**

Elena Garrachón-Gómez<sup>1</sup>, Ignacio García<sup>1,2</sup>, Ana García-Rodríguez<sup>1</sup>, Sol García-Rodríguez<sup>1</sup>,  
Cristina Alonso-Tristán<sup>1</sup>

<sup>1</sup> GIR SWIFT. Electromechanical Engineering Dept., EPS, University of Burgos, Avda. Cantabria s/n, 09006 Burgos, Spain, e-mail: egarrachon@ubu.es

<sup>2</sup> Institute of Smart Cities (ISC), Department of Engineering, Public University of Navarre, Campus Arrosadía, 31006 Pamplona, Spain.

*Keywords: crops; GIS; intercepted photosynthetically active radiation; ordinary kriging*  
*TOPIC: RENEWABLE ENERGIES, ENVIRONMENTAL IMPACT AND CIRCULARITY*

## 1. Introduction

Agriculture is one of the most important economic activities in the Castilla y León region (Spain), approximately one-third of the land area is destined for this use. The role of agriculture in rural areas is essential from a territorial perspective, where rural depopulation is originating a crisis in the countryside. Moreover, climate change is having a major impact on agricultural productivity as a consequence, among others, of the increase in the frequency and the severity of extreme events, especially in Mediterranean regions [1]. For these reasons, it is essential to highlight the vision of agriculture as a multifunctional activity. Besides good management, productivity depends on many other factors, such as soil properties or climatic factors. A decisive climatic variable, which is often not considered in the planning and management of the crops, is the Photosynthetically Active Radiation (PAR), specifically, the Intercepted Photosynthetically Active Radiation (IPAR).

The Photosynthetically Active Radiation (PAR) is a component of the global solar radiation located in the visible spectrum, between 400 and 700 nm. It is a term that refers to the flux of photons ( $\mu\text{mol}\cdot\text{m}^{-2}\cdot\text{s}^{-1}$ ) or the energy ( $\text{W}\cdot\text{m}^{-2}$ ) capable of electron transport from the photosynthetic process [2]. It plays a central role as the only source of energy for photosynthesis. PAR measurements are scarce, despite some few initiatives such as the Active Radiation Monitoring Network, recently established in Spain [3]. In the development of these networks, there are some factors such as the type of sensors [4], their correct calibration, or their strategic location [5] that are very important to obtain reliable measurements. For this reason, some authors estimate the PAR by establishing a constant relationship with the Global Horizontal Irradiance (GHI), generally between 0.45-0.5 [6], modelling through meteorological indices, applying neural networks [7] or by satellite observations for a specific state of the atmosphere [8].

The IPAR is involved in many processes such as photosynthesis and water exchange [9]. It is usually estimated from an approach of Beer's Law [10] defined in Eq. 1, which depends on the light extinction coefficient ( $k$ ) and the leaf area index (LAI).

$$IPAR = PAR \cdot (1 - e^{-k \cdot LAI}) \quad (1)$$

The light extinction coefficient ( $k$ ) is a parameter that describes the efficiency of light interception in plant canopies. The calculation of this factor is very complex, as it is influenced by plant canopy characteristics (development stage [11], leaf shapes, or inclination angles) and by the spectral properties of solar radiation [12].

The Leaf Area Index (LAI) is the leaf area per unit ground projection area ( $\text{m}^2/\text{m}^2$ ). It can be measured, analysed, and modelled at different spatial and time scales. These factors make it a reliable indicator of the state and evolution of vegetation over time [13]. LAI is usually estimated by direct (harvested leaves and leaf litters) or indirect optical methods carried on with numerous commercial instruments (digital hemispherical photography (DHP), the LAI-2200 plant canopy analyser (LI-COR Inc., Lincoln, Nebraska, USA), or the AccuPAR LP-80 ceptometer (Decagon Devices Inc., Pullman, Washington, USA). In recent years, other methodologies have been developed, such as the processing of remote sensing data with machine learning [14].

The main purpose of this study is to calculate and represent an estimation of IPAR values for the most characteristic crops of Castilla y León.

## 2. Materials and method

The Castilla y León community is one of the largest regions in Europe with an area of 94,224 km<sup>2</sup> (approximately 20% of Spanish national territory). Located in the inland northwest of Spain, the

region is distinguished by a broad plateau with an average altitude of 800 metres. The climate is temperate, characterised by quite long cold winters and short dry summers. Its orography is also distinctive because it is surrounded by three mountain systems (Cordillera Cantábrica to the north, Cordillera Central to the south, and Sistema Ibérico to the east).

The “Mapa de Superficies Naturales de Castilla y León 2021” (MSNCyL), elaborated every year by the “Instituto Tecnológico Agrario de Castilla y León” (ITACyL) [15], was used to identify the different types of crops and the area of land used for each of them. Four different groups of arable crops were considered for this study: cereals (wheat, barley, oat, rye, and maize), tubers (potatoes), industrial crops (sugar beet, sunflower, and rapeseed), and forage crops (alfalfa and vetches). Vineyards were also included as the most representative woody crop in Castilla y León. The total area covered by each of the considered crop groups is shown in Table 1. Note that industrial crops were independently considered due to their morphological differences compared to the other crops.

Table 1. Area destined for arable crops in Castilla y León in 2021.

Crop	Area (ha)
Forage crops	216419
Rapeseed	33810
Vineyard	66368
Cereal crops	2117431
Sunflower	242432
Potatoes	15556
Sugar beet	18422

The experimental dataset included 14 years (2007-2020) of data collected at 46 stations from Castilla y León, provided by the SiAR network [16]. In addition, 49 stations belonging to all the neighbouring regions (SiAR network, ADRASE, Air Quality Control Network in Cantabria, and SOLARGIS) had been included. The initial data were processed to obtain the annual daily mean value of GHI ( $\text{MJ}/\text{m}^2$ ) at each weather station. They were also spatially represented in QGIS 3.16 software with the ordinary kriging geostatistical method as it is the spatial interpolation technique that best works with the GHI data [17, 18].

As already mentioned in the introduction, PAR databases are spatially and temporally limited. In addition, making field measurements is a very technical and time-consuming process. For these reasons, PAR was calculated by setting a constant relationship with the GHI, for which data were measured at most weather stations. In this case, a coefficient of 0.48 [19, 20] was applied to the GHI map of Castilla y León.

The  $k$  and LAI values were established after a literature review of different studies performed on these crops in several locations and under a wide range of environmental, physical, and chemical conditions. IPAR was obtained for each type of crop through the application of Eq. 1.

Table 2. Light extinction coefficient ( $k$ ) and Leaf Area Index (LAI) estimated values for each crop.

Crop	$k$	LAI ( $\text{m}^2/\text{m}^2$ )	References
Forage crops	0.670	1.794	[21, 22]
Rapeseed	0.718	1.609	[21, 23]
Vineyard	0.507	1.574	[24, 25]
Cereal crops	0.579	2.903	[11, 12, 21]
Sunflower	0.738	4.416	[26, 27]
Potatoes	0.681	3.090	[28, 29]
Sugar beet	0.694	4.420	[30, 31]

### 3. Results and discussion

All the GHI data from the weather stations of Castilla y León and neighbouring Communities were used, employing the ordinary kriging interpolation method, to represent a GHI map of the Community. A coefficient of 0.48 was applied to this GHI map to obtain the PAR map of the Community. This map showed PAR values ranging between 5.69 and 8.35 MJ/m<sup>2</sup>. These values increase as we move southwards in the region (Figure 1).

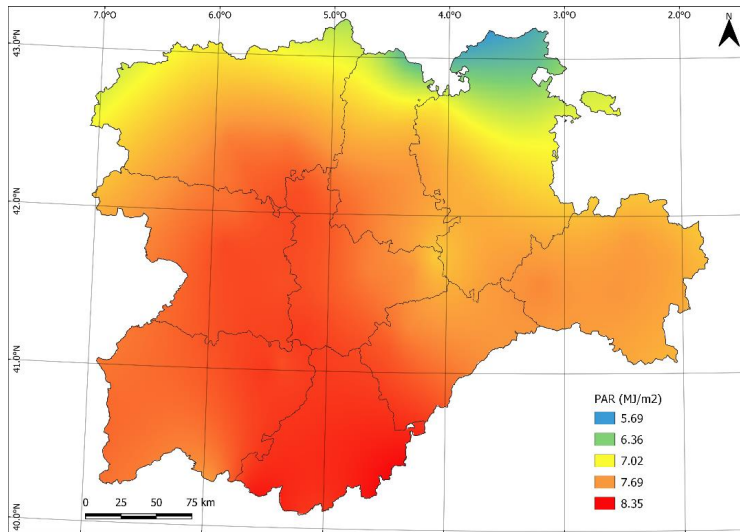


Figure 1. Estimated annual daily average PAR (MJ/ m<sup>2</sup>) values in Castilla y León.

Once the PAR map of Castilla y León was represented, LAI and k values (Table 2) were also needed to apply Beer's law and obtain the IPAR maps for each crop. The expressions (Eq. 1) used to calculate the IPAR for each crop and the range of values obtained in each map are detailed in table 3.

Table 3. Ranges of IPAR values estimated for each crop in Castilla y León.

Crop	Beer's law	IPAR (MJ/m <sup>2</sup> )
Forage crops	$PAR\ map \cdot (1 - e^{-0.607 \cdot 1.794})$	4.08-5.81
Rapeseed	$PAR\ map \cdot (1 - e^{-0.719 \cdot 1.609})$	4.07-5.62
Vineyard	$PAR\ map \cdot (1 - e^{-0.507 \cdot 1.574})$	3.70-4.59
Cereal crops	$PAR\ map \cdot (1 - e^{-0.579 \cdot 2.903})$	4.80-6.78
Sunflower	$PAR\ map \cdot (1 - e^{-0.738 \cdot 4.416})$	5.73-7.89
Potatoes	$PAR\ map \cdot (1 - e^{-0.681 \cdot 3.090})$	5.11-6.92
Sugar beet	$PAR\ map \cdot (1 - e^{-0.694 \cdot 4.420})$	5.93-7.74

These values provide a general idea of the IPAR, i.e., approximate values of the intercepted PAR by each crop in Castilla y León. The IPAR ranges are quite similar for forage crops and rapeseed due to their similar leaf morphology. For the same reason, potatoes, sugar beet, and sunflowers have the highest IPAR ranges. They can intercept more solar radiation than other crops because of their planophile leaves. Figure 2 shows the case of cereals.

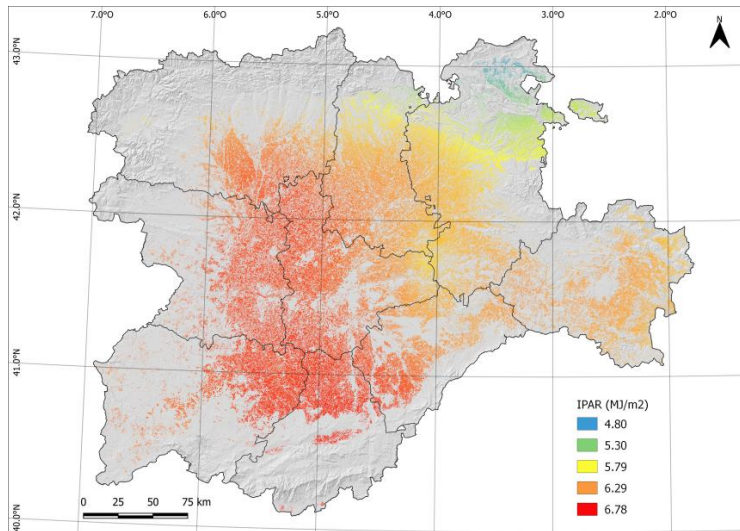


Figure 2. Estimated IPAR (MJ/ m<sup>2</sup>) values in cereal crops.

In addition to industrial crops, the vineyards of Castilla y León are especially relevant and are widely recognised worldwide, as they have managed to stand out due to the high quality of their wine production. One of the most renowned designations of origin with the largest surface area is Ribera del Duero. The vineyards of this appellation belong to four provinces (Soria, Burgos, Segovia, and Valladolid). Figure 3 shows the estimated IPAR in Ribera del Duero vineyards in southern Burgos. As can be seen, this study can be more detailed to analyse the individual plots.

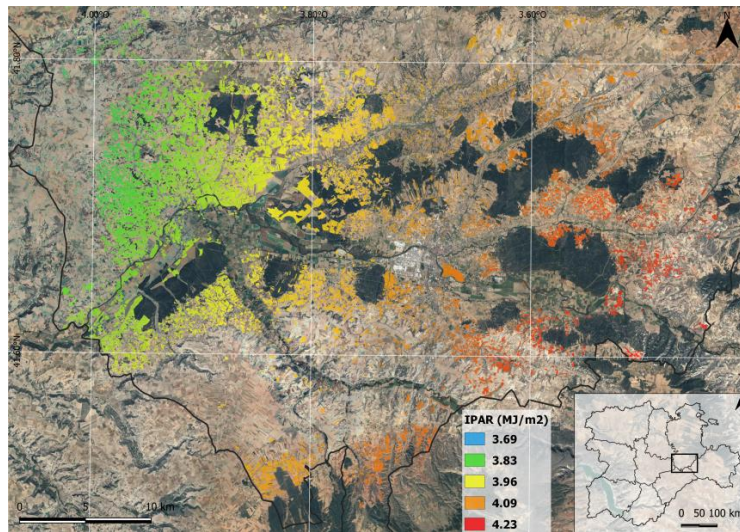


Figure 3. Estimated IPAR (MJ/ m<sup>2</sup>) values in vineyard in southern Burgos.

Value ranges presented in Table 3 show that canopy light interception is positively related to changes in LAI average values (Table 2). PAR interception usually increases sharply with increasing leaf area up to values of 2 [32]. It then increases at a slower rate up to a leaf area of 5. When this LAI value is reached, the percentage of incoming radiation intercepted can be as high as 95% [33]. Once the maximum LAI is attained in the mid to late growing season, the IPAR starts to decrease linearly to a final mean PAR interception value of 25% [34].

Many authors express the cumulative IPAR (CIPAR) over a complete growing season. They take days after sowing as a reference to make their IPAR measurements and put them all together at the end of the crop cycle [34, 35]. Daily IPAR measurements throughout the growth cycle indicate that IPAR could be dependent on plant age due to the observed differences in growth stages [36, 37].

Other influential factors are the sowing date and the plant density. [33] observed that IPAR values in wheat plots during two consecutive seasons decreased as the sowing date was delayed. Early sowing intercepted 19.8% to 25.7%, more PAR than late sowing, probably due to the longer duration. They also studied the effect of plant density on IPAR. They were higher in plots with higher plant density.

#### 4. Conclusions

The data presented here emphasise the importance of using detailed studies on the relationship between IPAR and the relative efficiencies of different crops. The ability of the canopy to intercept PAR has a positive impact on biomass accumulation and grain production, but estimating IPAR from instantaneous measurements is complicated. Therefore, high yields require agronomic techniques that produce both a high level of radiation interception and a high conversion rate of IPAR into the grain. This information has a potential application in agronomic management and improving crop production efficiency. Determining the best sowing date, optimal rotation crops, row spacing, or seeding density can be easier with this application.

#### Acknowledgements

The authors gratefully acknowledge the financial support provided by the Spanish Ministry of Science & Innovation under the I+D+i state program “Challenges Research Projects” (Ref. RTI2018-098900-B-I00). Elena Garrachón-Gómez thanks financial support provided by Junta de Castilla y León (Programa Operativo de Empleo Juvenil, Fondo Social Europeo e Iniciativa de Empleo Juvenil)

#### References

- [1] ZUBELZU, S., R. SÁNCHEZ-CALVO, D. SEGOVIA CARDOZO, F. CANALEZ IDE and L. RODRÍGUEZ-SINOBAS. Suitability of Sustainable Agricultural Drainage Systems for adapting agriculture to climate change. *Science of the Total Environment*. 2022. 805, 150319. doi: 10.1016/j.scitotenv.2021.150319
- [2] NWOKOLO, S.C. and S.O. AMADI. A Global Review of Empirical Models for Estimating Photosynthetically Active Radiation. *Trends in Renewable Energy*. 2018. 4(2), 236-327. doi: 10.17737/tre.2018.4.2.0079
- [3] NAVARRO, A.A., R.X. VALENZUELA, W. OUSMANE, F. FERRERA-COBOS, L.F. ZARZALEJO, J.M. VINDEL, G. DÍAZ and J.M. FRANCO-VALIENTE. Photosynthetically Active Radiation Monitoring Network in Spain. In: *Proceedings of the ISES EuroSun 2020 Conference – 13th International Conference on Solar Energy for Buildings and Industry*. Freiburg, Germany: International Solar Energy Society. 2020. 1-6. doi:10.18086/eurosun.2020.09.02
- [4] AKITSU, T., K.N. NASAHARA, Y. HIROSE, O. IJIMA and A. KUME. Quantum sensors for accurate and stable long-term photosynthetically active radiation observations. *Agricultural and Forest Meteorology*. 2017. 237-238, 171-183. doi: 10.1016/j.agrformet.2017.01.011
- [5] VINDEL, J.M., R.X. VALENZUELA, A.A. NAVARRO, L.F. ZARZALEJO, A. PAZ-GALLARDO, J.A. SOUTO, R. MÉNDEZ-GÓMEZ, D. CARTELLE and J.J. CASARES. Modeling Photosynthetically Active Radiation from Satellite-Derived Estimations over Mainland Spain. *Remote Sensing*. 2018. 10(6), 849. doi: 10.3390/rs10060849
- [6] TSUBO, M. and S. WALKER. Relationships between photosynthetically active radiation and clearness index at Bloemfontein, South Africa. *Theoretical and Applied Climatology*. 2005. 80(1), 17-25. doi: 10.1007/s00704-004-0080-5

- [7] GARCÍA-RODRÍGUEZ, A., D. GRANADOS-LÓPEZ, S. GARCÍA-RODRÍGUEZ, M. DíEZ-MEDIAVILLA and C. ALONSO-TRISTÁN. Modelling Photosynthetic Active Radiation (PAR) through meteorological indices under all sky conditions. *Agricultural and Forest Meteorology*. 2021. 310, 108627. Doi: 10.1016/j.agrformet.2021.108627
- [8] FOYO-MORENO, I., I. ALADOS and L. ALADOS-ARBOLEDAS. A new conventional regression model to estimate hourly photosynthetic photon flux density under all sky conditions. *International Journal of Climatology*. 2017. 37(1), 1067-1075. doi: 10.1002/joc.5063
- [9] HANAN, N.P. and A. BÉGUÉ. A method to estimate instantaneous and daily intercepted photosynthetically active radiation using a hemispherical sensor. *Agricultural and Forest Meteorology*. 1995. 74(3-4), 155-168. doi: 10.1016/0168-1923(94)02196-Q
- [10] MONSI, M. and T. SAEKI. On the Factor Light in Plant Communities and its Importance for Matter Production. *Annals of Botany*. 2005. 95(3), 549-597. doi: 10.1093/aob/mci052
- [11] SIELING, K., U. BÖTTCHER and H. KAGE. Canopy traits in rye, triticale and wheat under varying N supply. *Agronomy Research*. 2016. 14(4), 1467-1485.
- [12] KUKAL, M.S. and S. IRMAK. Light interactions, use and efficiency in row crops canopies under optimal growth conditions. *Agricultural and Forest Meteorology*. 2020. 284, 107887. doi: 10.1016/j.agrformet.2019.107887
- [13] ASNER, G.P., J.M.O. SCURLOCK and J.A. HICKE. Global synthesis of leaf area index observations: implications for ecological and remote sensing studies. *Global Ecology and Biogeography*. 2003. 12(3), 191-205. doi: 10.1046/j.1466-822X.2003.00026.x
- [14] FANG, H., F. BARET, S. PLUMMER and G. SCHAEPMAN-STRUB. An Overview of Global Leaf Area Index (LAI): Methods, products, validation, and applications. *Reviews of Geophysics*. 2019. 57(3), 739-799. doi: 10.1029/2018RG000608
- [15] Instituto Tecnológico Agrario de Castilla y León. Mapa de cultivos y superficies naturales. Available in: <https://mcsncyl.itacyl.es/descarga>. Last accessed: December 2021.
- [16] Ministerio de Agricultura, Pesca y Alimentación. SiAR: Sistema de Información Agroclimática para el Regadío. Available in: <https://portal.mapa.gob.es/websiar/SeleccionParametrosMap.aspx?dst=1>. Last accessed: November 2021.
- [17] ALSAMAMRA, H., J.A. RUIZ-ARIAS, D. POZO-VÁZQUEZ and J.A. TOVAR-PESCADOR. A comparative study of ordinary and residual kriging techniques for mapping global solar radiation over southern Spain. *Agricultural and Forest Meteorology*. 2009. 149(8), 1343-1357. doi: 10.1016/j.agrformet.2009.03.005
- [18] RODRÍGUEZ-AMIGO, M. C., M. DíEZ-MEDIAVILLA, D. GONZÁLEZ-PEÑA, A. PÉREZ-BURGOS and C. ALONSO-TRISTÁN. Mathematical interpolation methods for spatial estimation of global horizontal irradiation in Castilla-León, Spain: A case study. *Solar Energy*. 2017. 151, 14-21. doi: 10.1016/j.solener.2017.05.024
- [19] ANDRADE, F.H., S.A. UHART, G.G. ARGUISSAIN and R.A. RUIZ. Radiation use efficiency of maize grown in a cool area. *Field Crops Research*. 1992. 28(4), 345-354. doi: 10.1016/0378-4290(92)90020-A
- [20] HARBO, L.F., C. DE NOTARIS, J. ZHAO and J.E. OLESEN. Productivity, light interception and radiation use efficiency of organic and conventional arable cropping systems. *European Journal of Agronomy*. 2022. 132, 126407 doi: 10.1016/j.eja.2021.126407
- [21] RAMÍREZ-GARCÍA, J., P. ALMENDROS and M. QUEMADA. Ground cover and leaf area index relationship in a grass, legume and crucifer crop. *Plant Soil Environment*. 2012. 58(8), 385-390. doi: 10.17221/195/2012-PSE
- [22] DINCA, N. and D. DUNEA. On the assessment of light use efficiency in alfalfa (*Medicago Sativa* L.) in the eco-climatic conditions of Târgoviște Piedmont plain. *Romanian Agricultural Research*. 2018. 35, 1-11.
- [23] FLETCHER, A.L., P.R. JOHNSTONE, E. CHAKWIZIRA and H.E. BROWN. Radiation capture and radiation use efficiency in response to N supply for crop species with contrasting canopies. *Field Crops Research*. 2013. 150, 126-134. doi: 10.1016/j.fcr.2013.06.014

- [24] LÓPEZ-LOZANO, R. and M.A. CASTERAD. Comparison of different protocols for indirect measurement of leaf area index with ceptometers in vertically trained vineyards. *Australian Journal of Grape and Wine Research*. 2013. 19(1), 116-122. doi: 10.1111/ajgw.12005
- [25] GARCÍA-GUTIÉRREZ, V., C. STÖCKLE, P.M. GIL and F.R. MEZA. Evaluation of Penman-Monteith Model Based on Sentinel-2 Data for the Estimation of Actual Evapotranspiration in Vineyards. *Remote Sensing*. 2021. 13(3), 478. doi: 10.3390/rs13030478
- [26] FERREIRA, A.M. and F.G. ABREU. Description of development, light interception and growth of sunflower at two sowing dates and two densities. *Mathematics and Computers in Simulation*. 2001. 56(4-5), 369-384. doi: 10.1016/S0378-4754(01)00308-1
- [27] ZAREA, M.J., A. GHALAVAND and J. DANESHIAN. Effect of planting patterns of sunflower on yield and extinction coefficient. *Agronomy for Sustainable Development*. 2005. 25(4), 513-518.
- [28] JONGSCHAAP, R.E.E and R. BOOIJ. Spectral measurements at different spatial scales in potato: relating leaf, plant and canopy nitrogen status. *International Journal of Applied Earth Observation and Geoinformation*. 2004. 5(3), 205-218. doi: 10.1016/j.jag.2004.03.002
- [29] CAMARGO, D.C., F. MONTOYA, M.A. MORENO, J.F. ORTEGA and J.I. CÓRCOLES. Impact of water deficit on light interception, radiation use efficiency and leaf area index in potato crop (*Solanum tuberosum* L.). *Journal of Agricultural Science*. 2016. 154(4), 662-673. doi: 10.1017/S002185961500060X
- [30] ANDRADE, F.H., S.A. UHART, G.G. ARGUISSAIN and R.A. RUIZ. Radiation use efficiency of maize grown in a cool area. *Field Crops Research*. 1992. 28(4), 345-354. doi: 10.1016/0378-4290(92)90020-A
- [31] VARGA, I., Z. LONCARIC, S. KRISTEK, A.M. KULUNDZIC, A. REBEKIC and M. ANTUNOVIC. Sugar Beet Root Yield and Quality with Leaf Seasonal Dynamics in Relation to Planting Densities and Nitrogen Fertilization. *Agriculture*. 2021. 11(5), 407. doi: 10.3390/agriculture11050407
- [32] KHURANA, S.C. and J.S. MCLAREN. The influence of leaf area, light interception and season on potato growth and yield. *Potato Research*. 1982. 25(4), 329-342. doi: 10.1007/BF02357290
- [33] WAJID, A. A. HUSSAIN, A. AHMAD, M. RAFIQ, A.R. GOHEER and M. IBRAHIM. Effect of Sowing Date and Plant Density on Growth, Light Interception and Yield of Wheat under Semi-Arid Conditions. *International Journal of Agriculture & Biology*. 2004. 6(6), 1119-1123.
- [34] TARKALSON, D.D, B.A. KING, D.L. BJORNEBERG and J.P. TABERNA. Effects of Planting Configuration and In-Row Plant Spacing on Photosynthetically Active Radiation Interception for Three Irrigated Potato Cultivars. *Potato Research*. 2012. 55(1), 41-58. Doi: 10.1007/s11540-011-9205-2
- [35] LIU, M., L. MU, Y. LU and H. YANG. Forage accumulation and radiation use of alfalfa under deficit irrigation. *Crop Science*. 2021, 61(3), 2190-2202. doi: 10.1002/csc2.20480
- [36] SIVAKUMAR, M.V.K. and S.M. VIRMANI. Crop productivity in relation to interception of photosynthetically active radiation. *Agricultural and Forest Meteorology*. 1984. 31(2), 131-141. doi: 10.1016/0168-1923(84)90015-7
- [37] HATFIELD, J.L. Radiation Use Efficiency: Evaluation of Cropping and Management Systems. *Agronomy Journal*. 2014. 106(5), 1820-1827. doi: 10.2134/agronj2013.0310