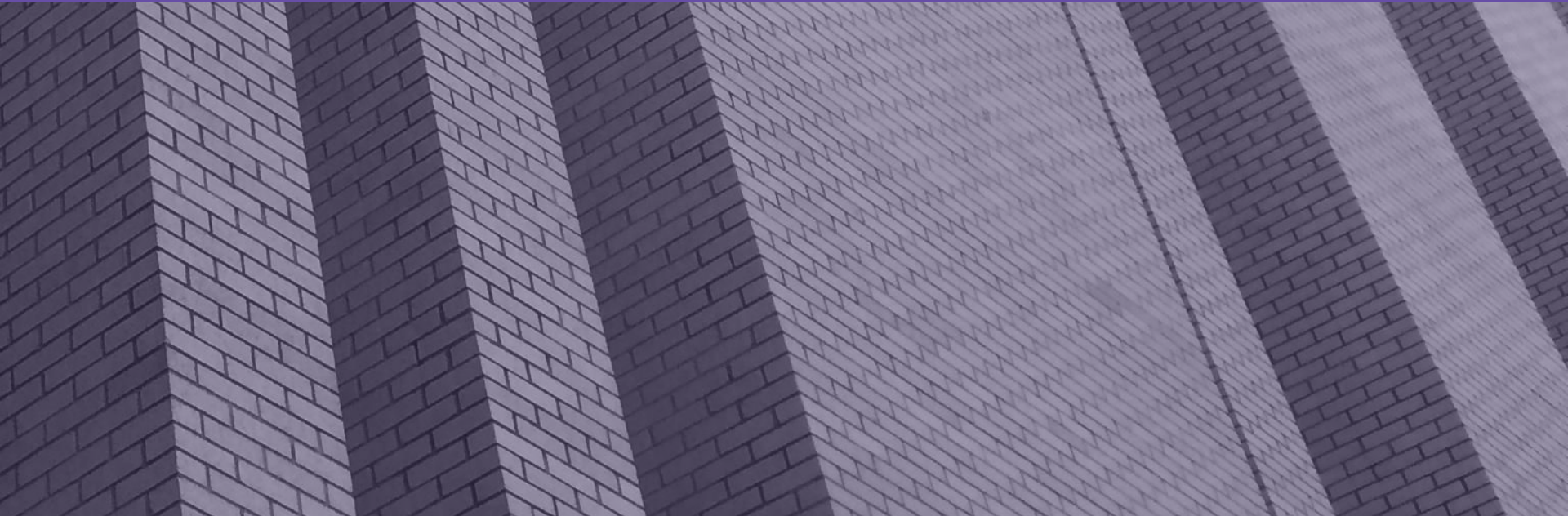


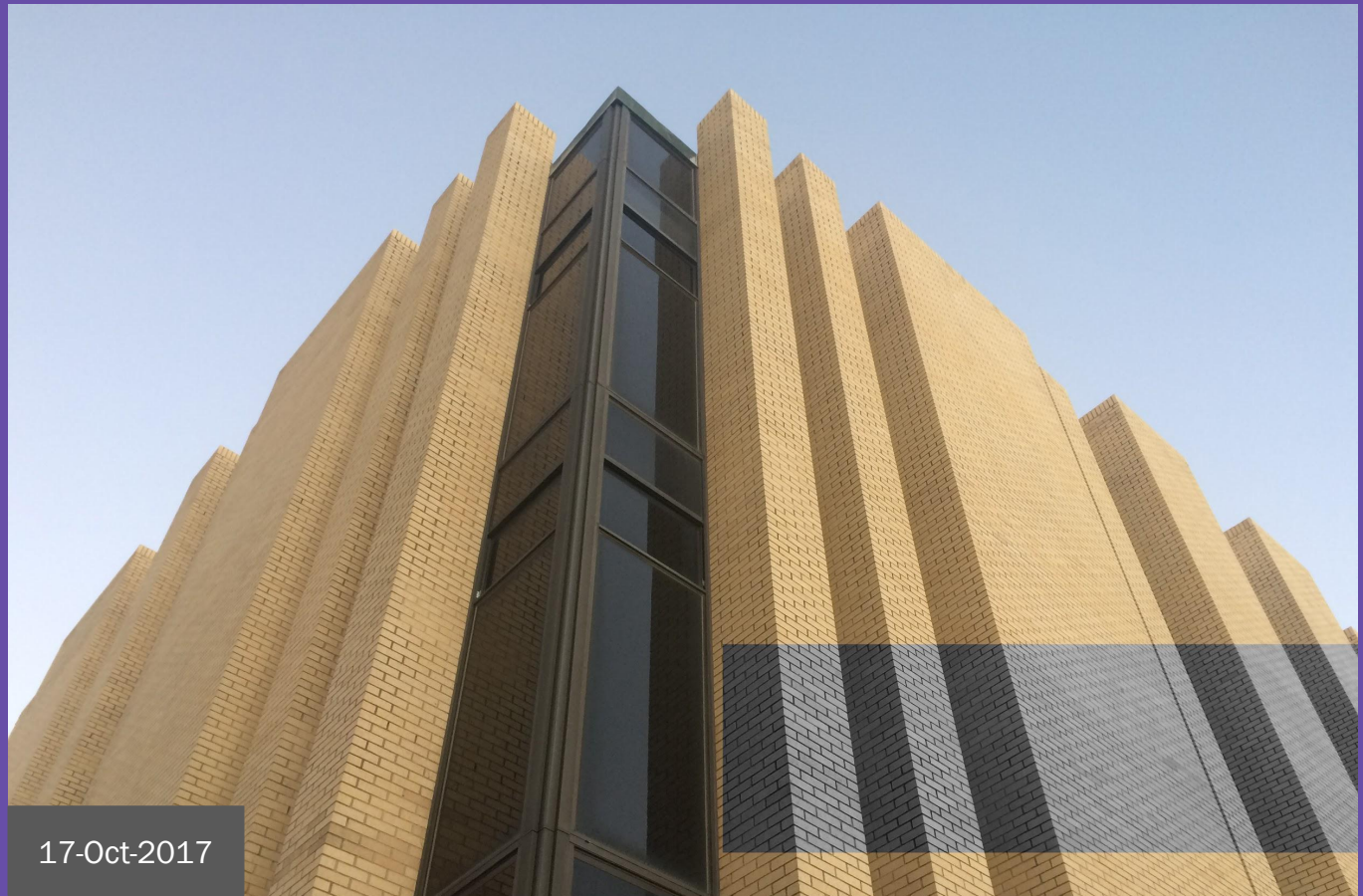
# Preserving Modernist Architecture: The Teague Documentation Project

Ben Baaske | Center for Heritage Conservation & Texas Old Missions and Forts Restoration Association



On the cover...

...a seemingly unspectacular building, its primary character lies in the vertically striated exterior and stark contrast between a light masonry and tinted glazing.



17-Oct-2017



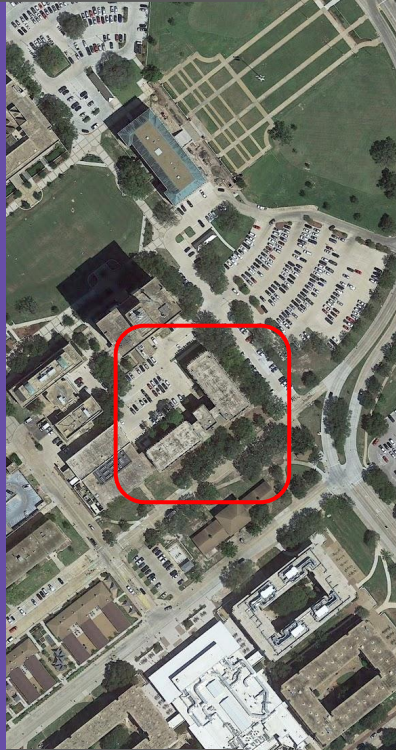
I. Google Earth Survey



09-Sep-2017



# I. Google Earth Survey



09-Sep-2017



05-Feb-2010



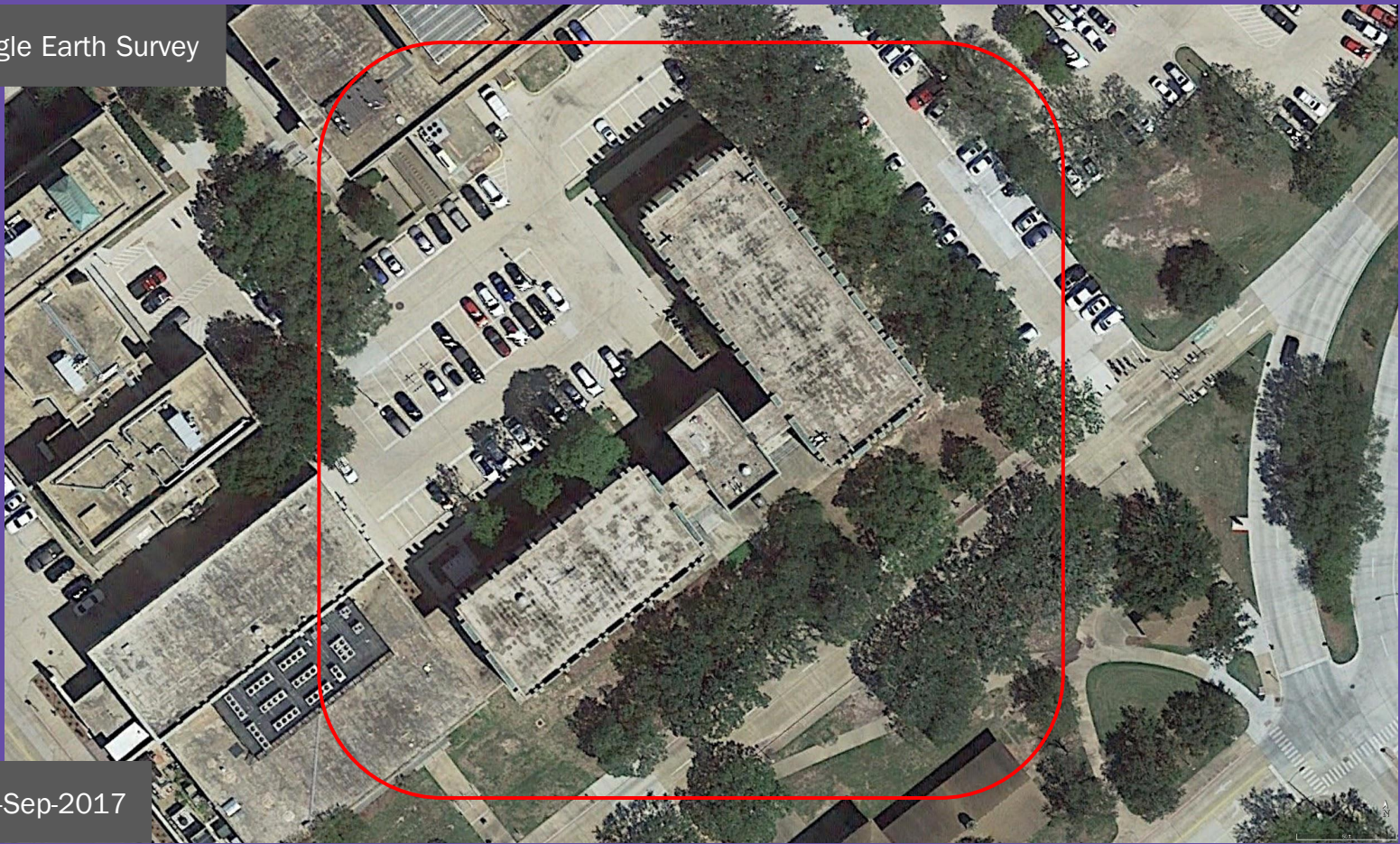
28-Feb-2003



05-Feb-1995



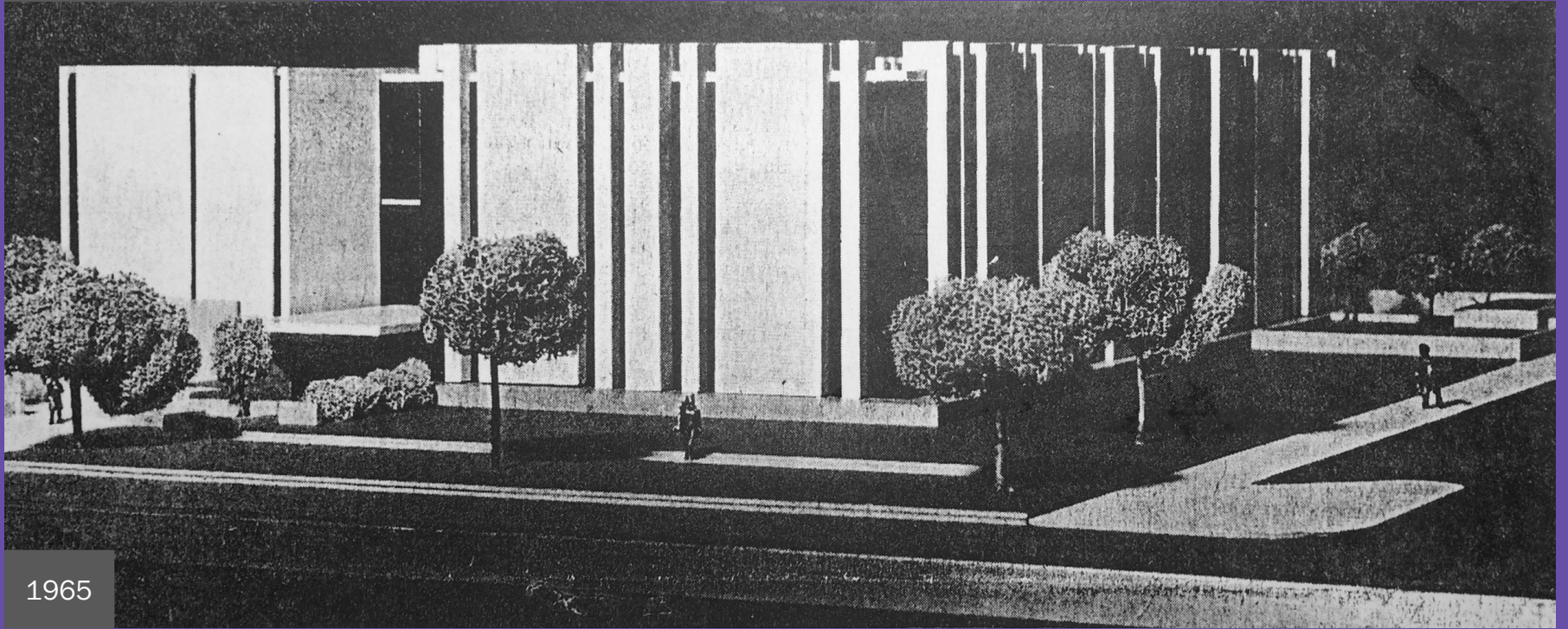
I. Google Earth Survey



09-Sep-2017



## II. Historical Research

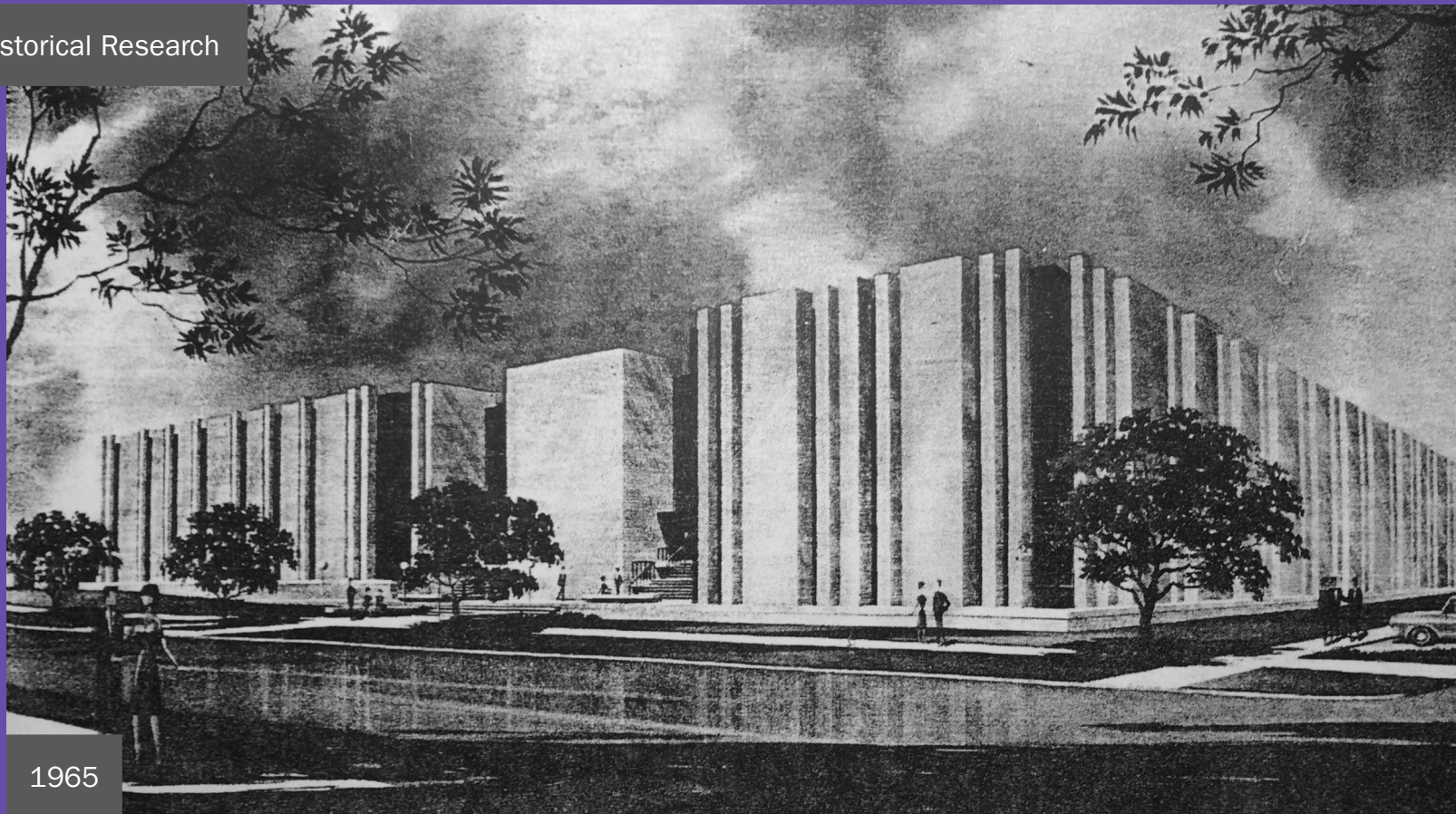


1965

East Perspective | Concept Model



## II. Historical Research



1965

## Directory Information

Olin E. Teague Research Center  
Texas A&M University  
735 Lamar Street  
College Station, Texas  
Built: 1965-6  
Building number: 0445  
Abbreviation: TEAG  
Floors: 5





## Facilities Information

Cost: \$1.664 million

Gross SF: 31,273 sf

Room ct: 148 rooms

## Cushing Archive

Construction start: July-1965

Construction end: Oct-1966

Dedication: 19-Sep-1967



1969

## II. Historical Research

Inner cover to dedication  
day (19-Sep-1967) book  
[below]





## II. Historical Research



## Olin E. “Tiger” Teague

- Fightin’ Texas Aggie  
Class of 1932
- WWII veteran
- Congressman
  - Veterans Affairs
    - Committee Chair
  - Space Exploration
    - Committee





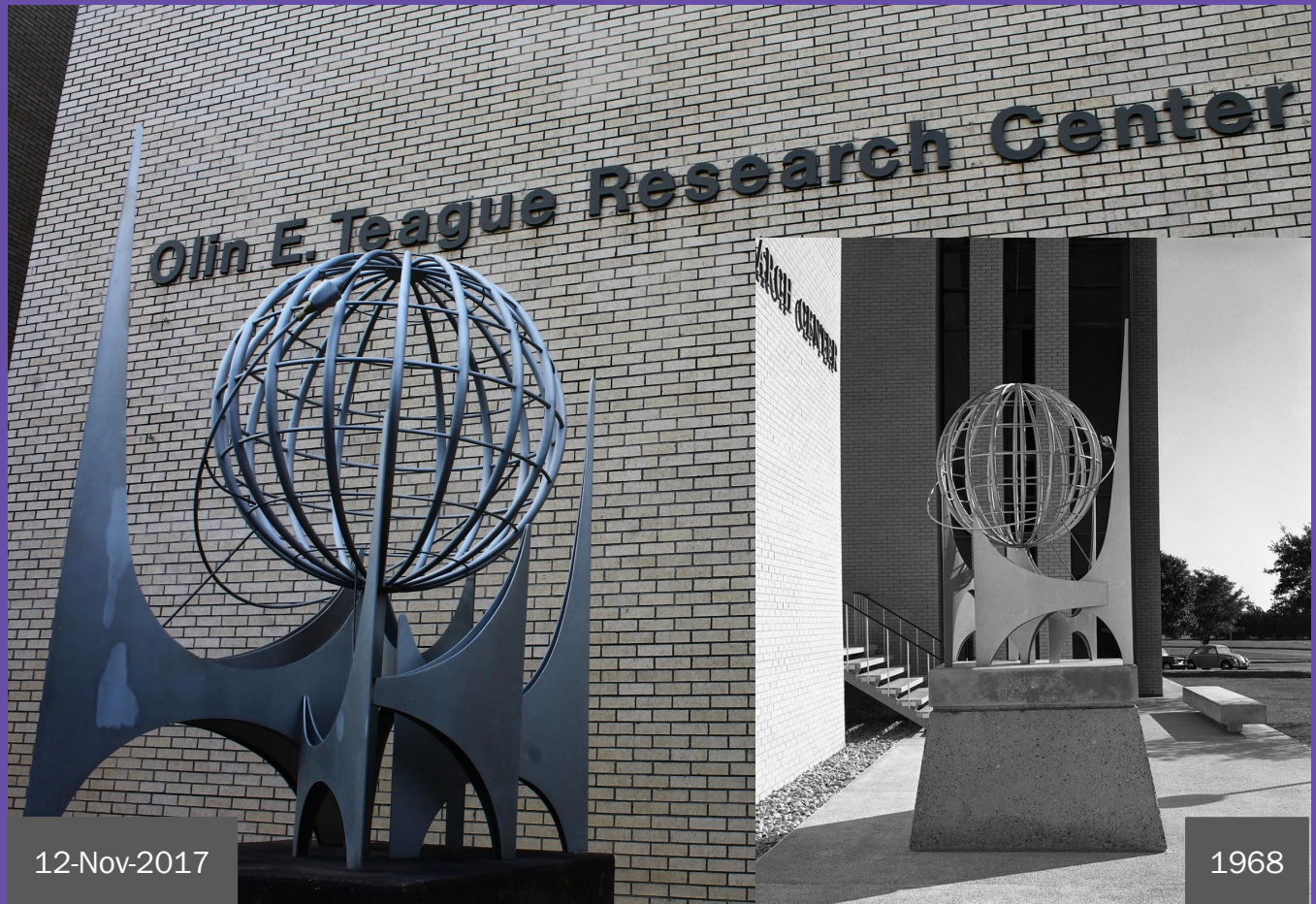
## II. Historical Research



## II. Historical Research

# “Exploration of Space”

- Presented by:  
Albritton  
Engineering, Inc.  
from Bryan, TX  
&  
Reynolds Metals  
Company from  
Richmond, VA





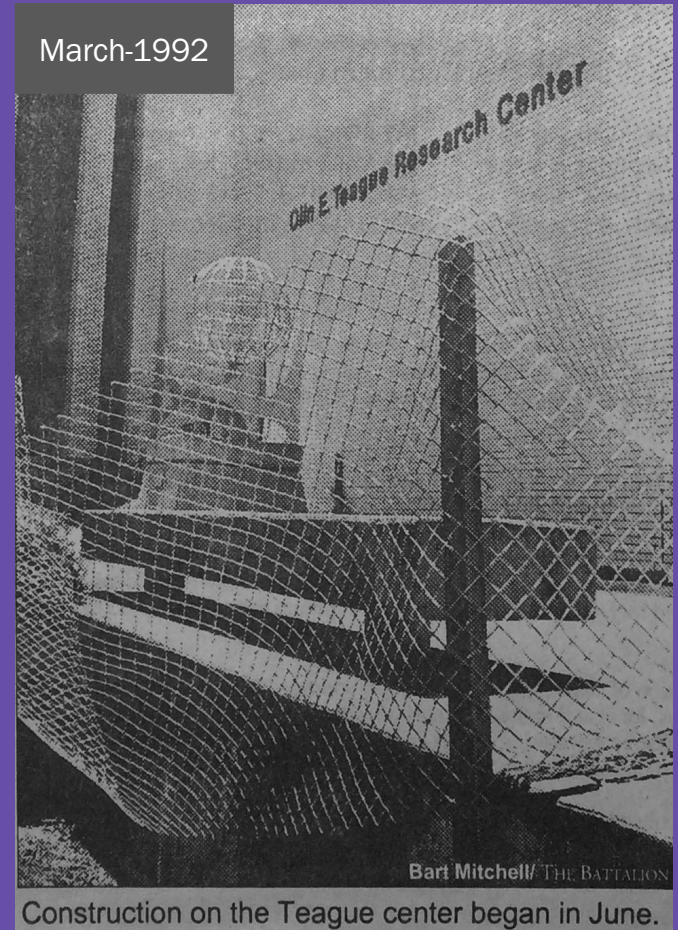
## II. Historical Research



## 1992 Expansion

- architect and planning manager: James Davidson
- 7,000 additional square feet
- concentrate/increase computer services
- the renovation and reprogramming made Teague the central location for computer services at A&M
- “...A&M’s one-stop-shopping computer center.”
- expansion completed in June of 1994
- “The new system will alleviate any worries students may have when trying to get the classes they need.” - *The Battalion*

March-1992

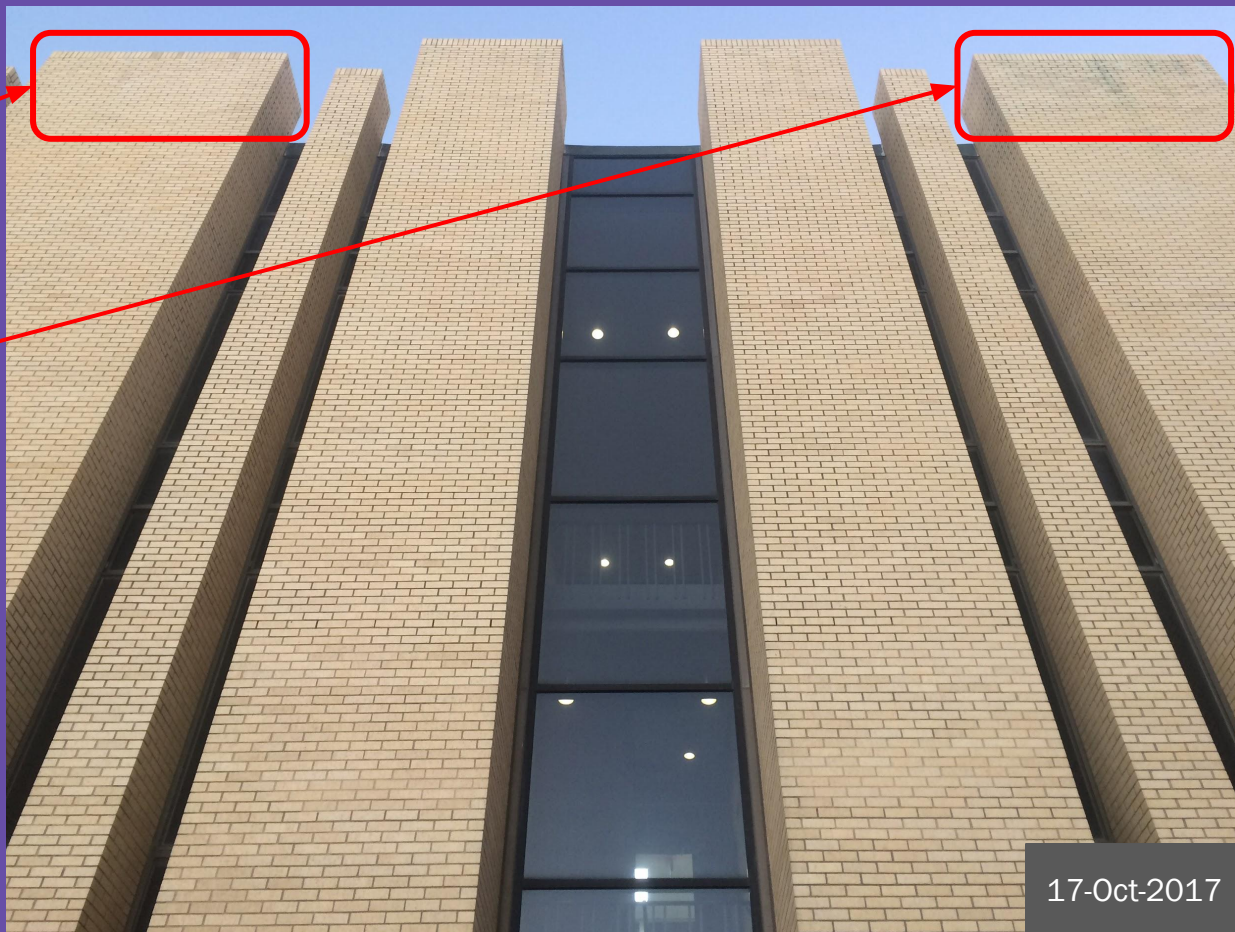


Construction on the Teague center began in June.



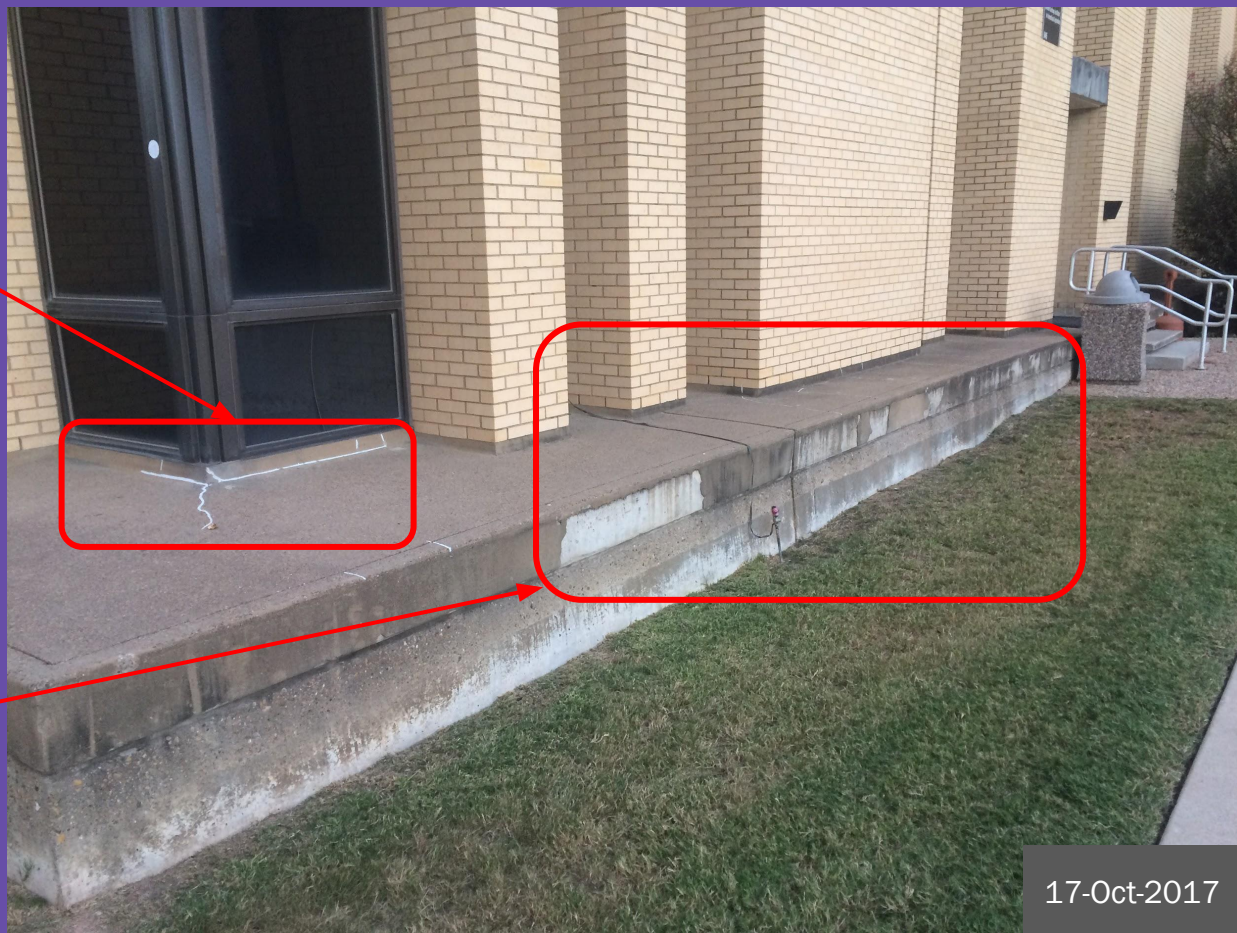
### III. Condition Assessment

- Individual bricks discolored
- Possibly damaged or recently replaced
- Moisture damage
- Possibly spalling



### III. Condition Assessment

- Repaired cracking in concrete plinth



- Spalling of outer concrete layer

17-Oct-2017



### III. Condition Assessment

- Moisture damage

- Possibly spalling

- Plinth of the building has considerable degradation; likely due to moisture

- Staining (mildew, algae, maybe minor efflorescence) and spalling

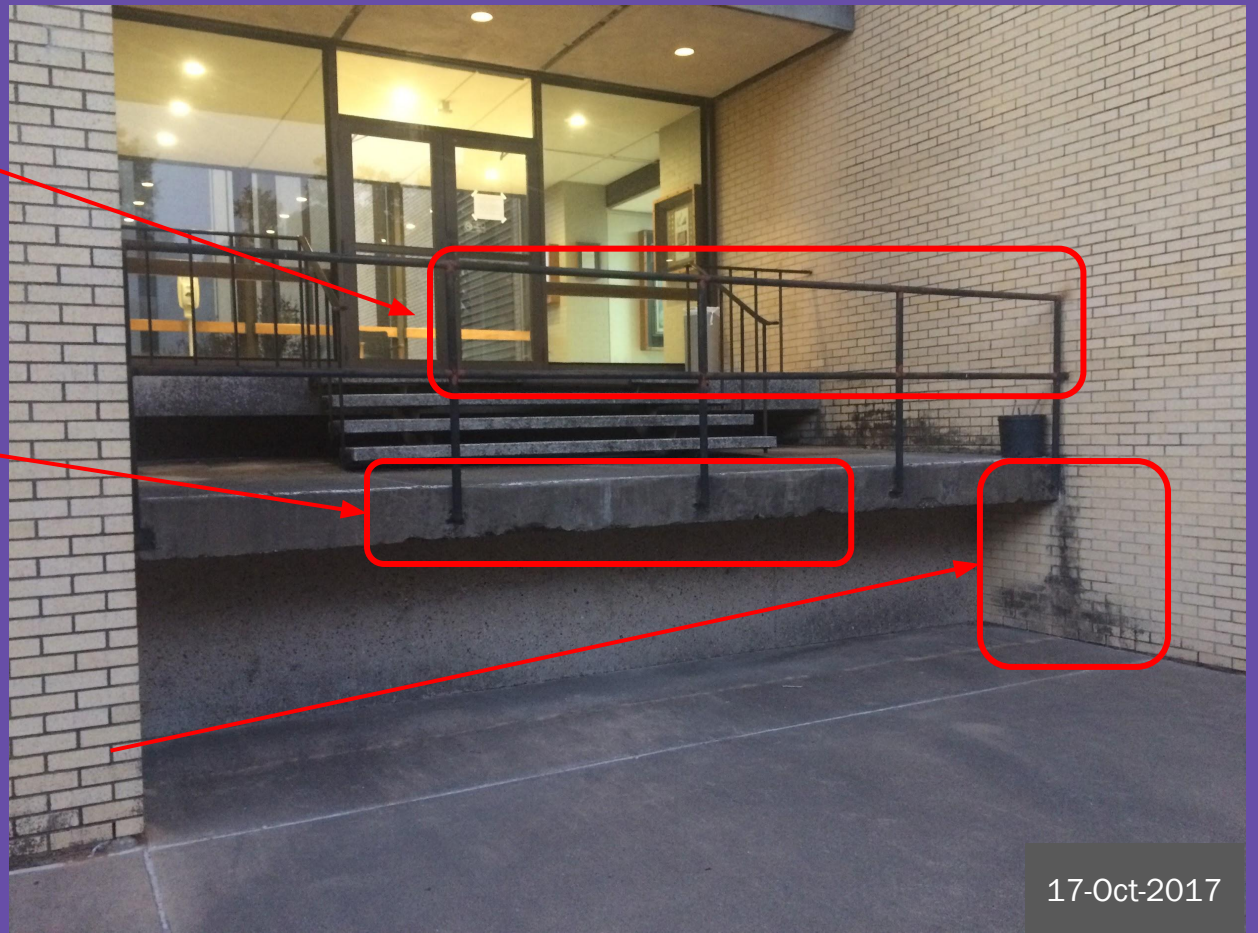


### III. Condition Assessment

- Rust on railing joints with rust staining on the sandstone masonry

- Concrete cracking and erosion

- Spalling due to moisture runoff



17-Oct-2017



### III. Condition Assessment



1st Floor Balcony



30-Nov-2017



### III. Condition Assessment

- Spalling and efflorescence of concrete

- Concrete cracking and erosion

- The entire plinth is in poor condition: spalling, cracking, erosion, algae, efflorescence, etc.

- Plinth has no protection from moisture; the building may as well be sitting on an exposed sidewalk.



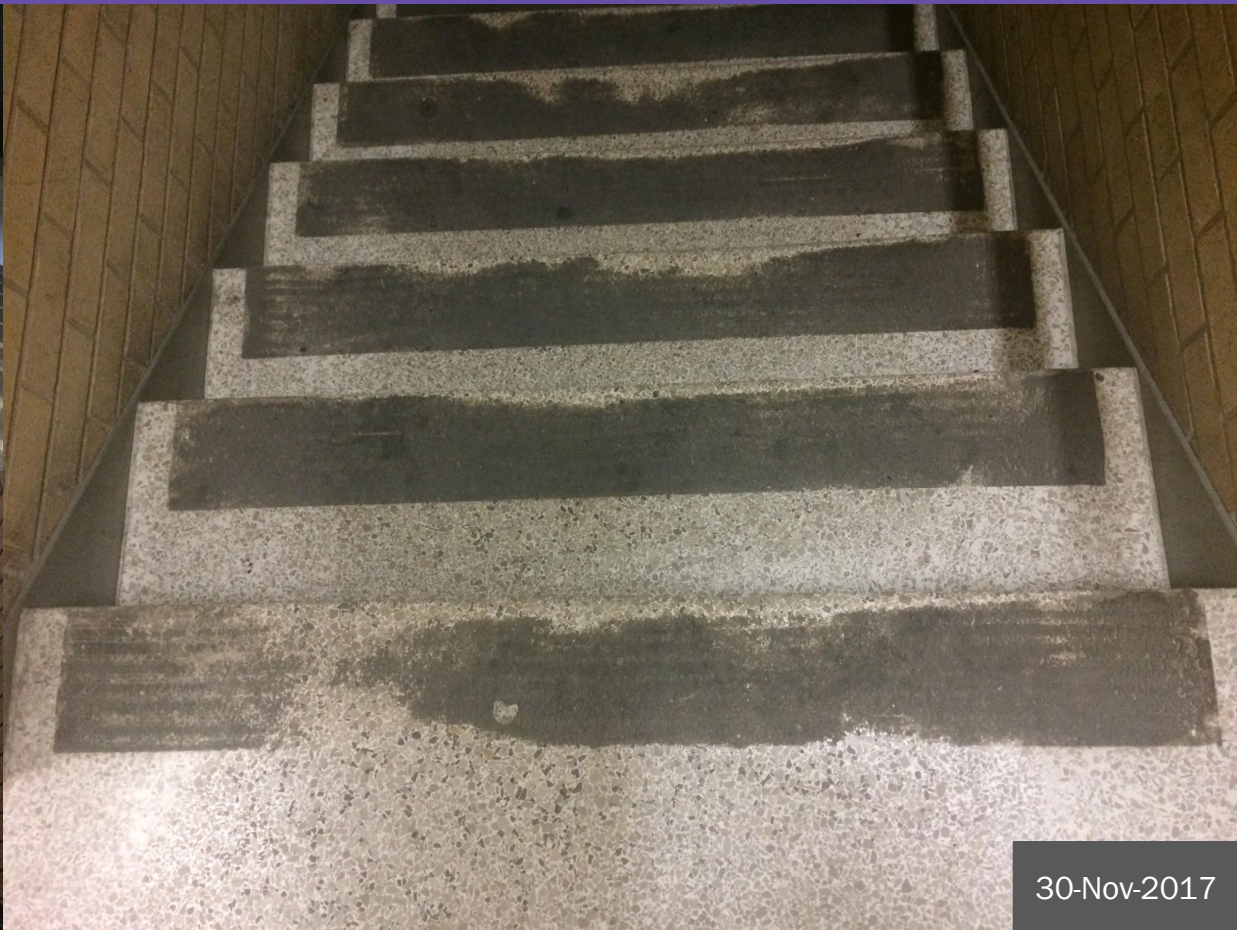
12-Nov-2017



### III. Condition Assessment

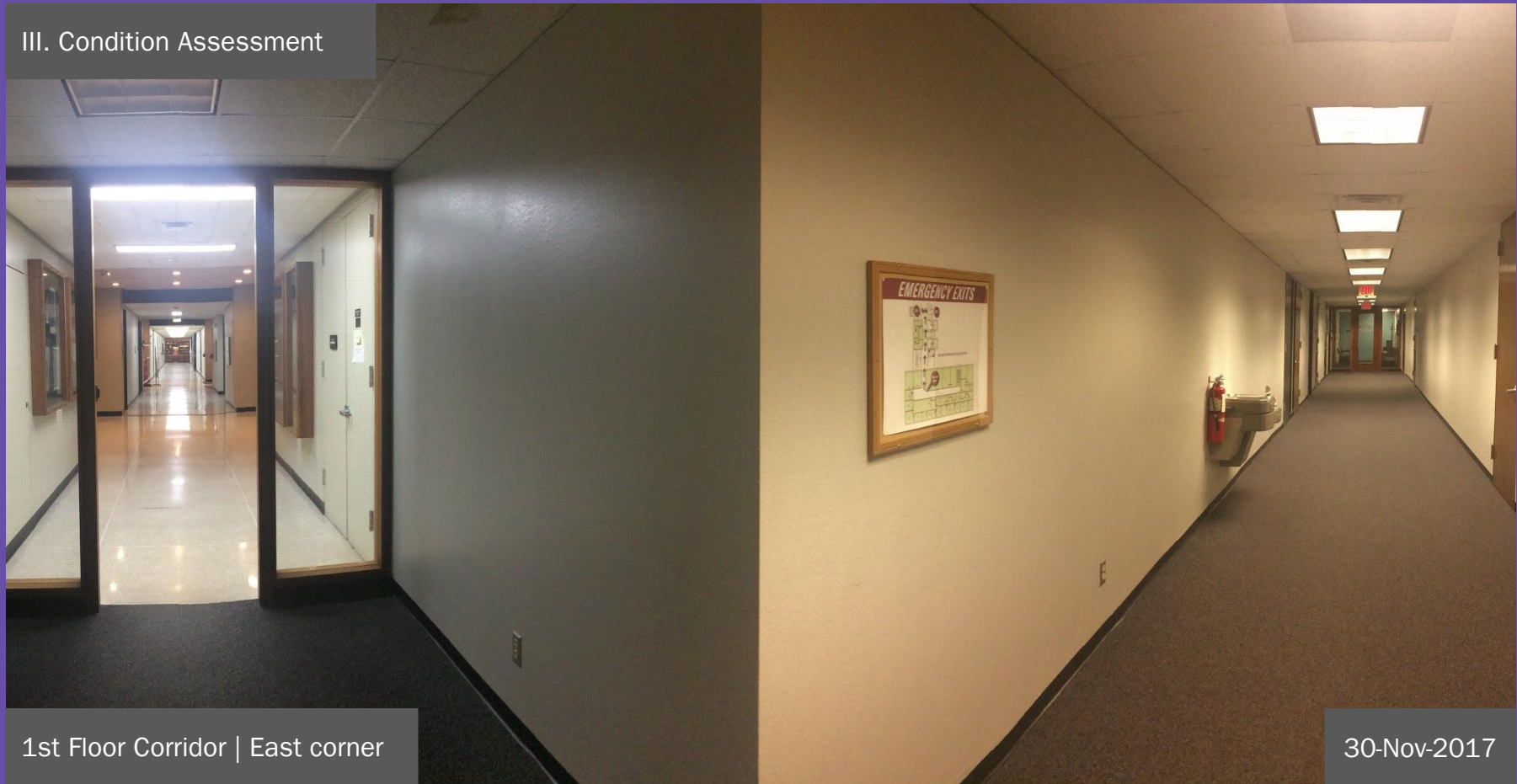


West stairwell



30-Nov-2017

### III. Condition Assessment



1st Floor Corridor | East corner

30-Nov-2017



### III. Condition Assessment



- 1st Floor Corridor
- Ceiling air diffuser with damaged mineral fiber ceiling tiles



1st Floor Corridor

30-Nov-2017

### III. Condition Assessment



- 1st Floor Corridor
- Close to main entry lobby
- damaged terrazzo floor joint



1st Floor Corridor

30-Nov-2017



### III. Condition Assessment



2nd Floor Corridor | East corner

30-Nov-2017

### III. Condition Assessment



30-Nov-2017



### III. Condition Assessment



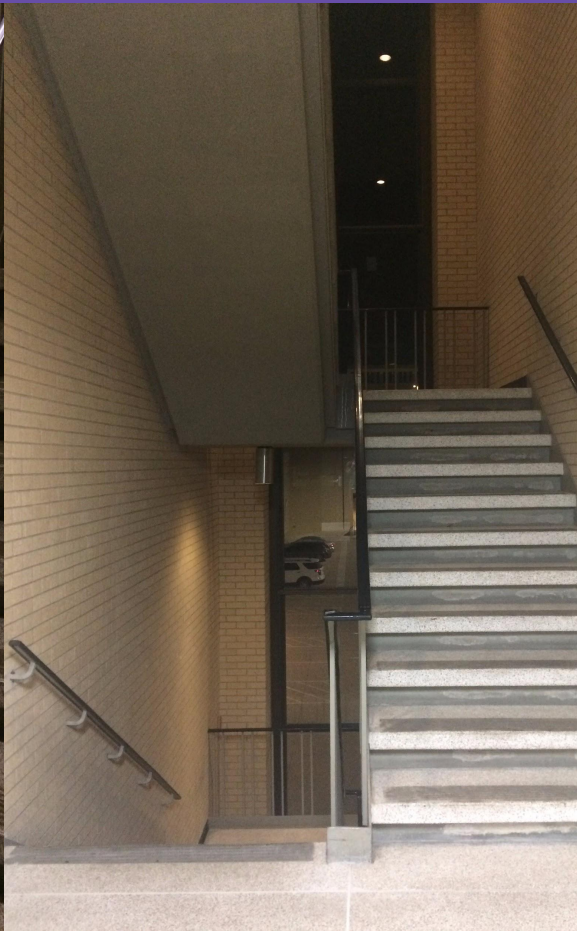
2nd Floor Corridor | North end

30-Nov-2017

### III. Condition Assessment



North stairwell



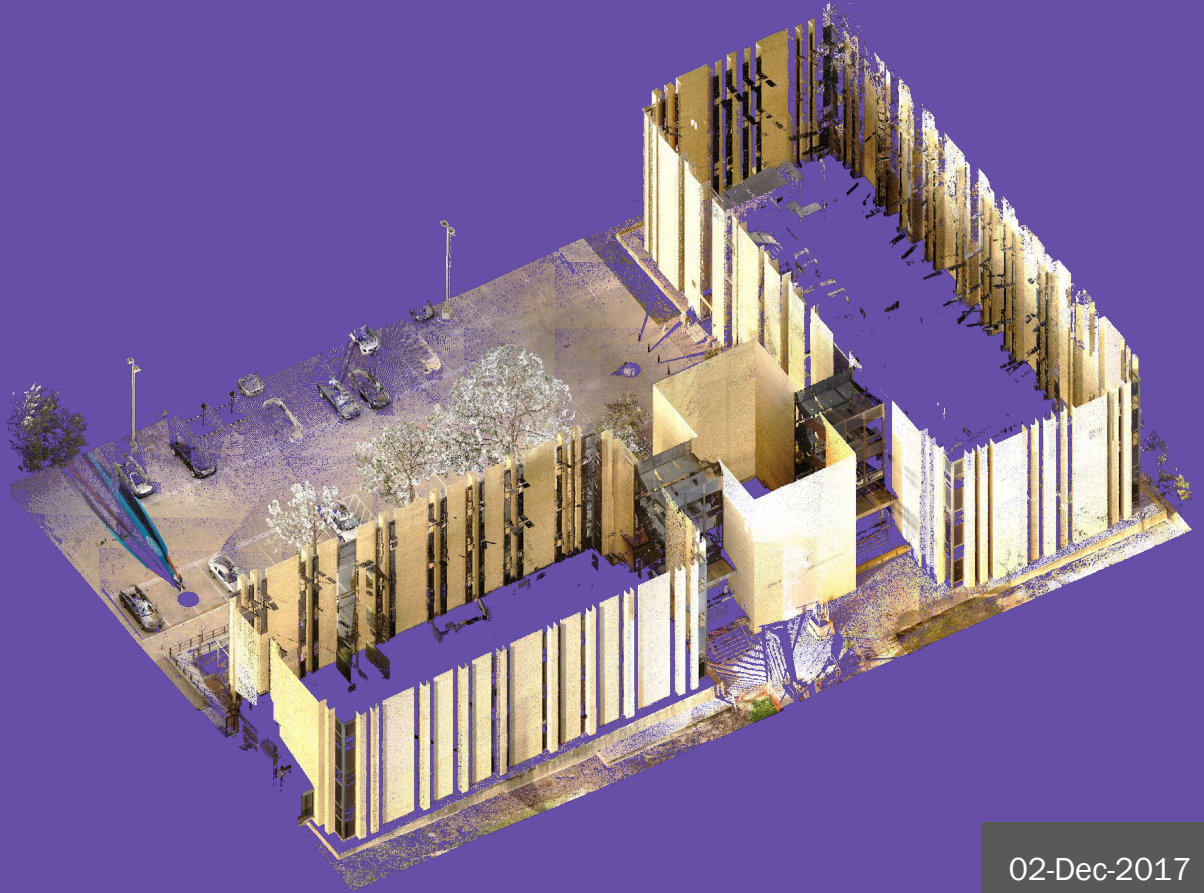
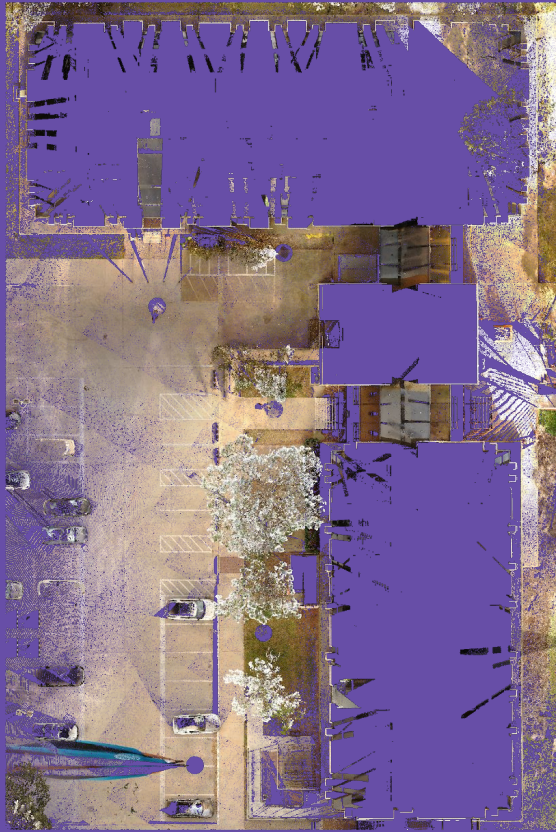


PACSS & X330 & S350





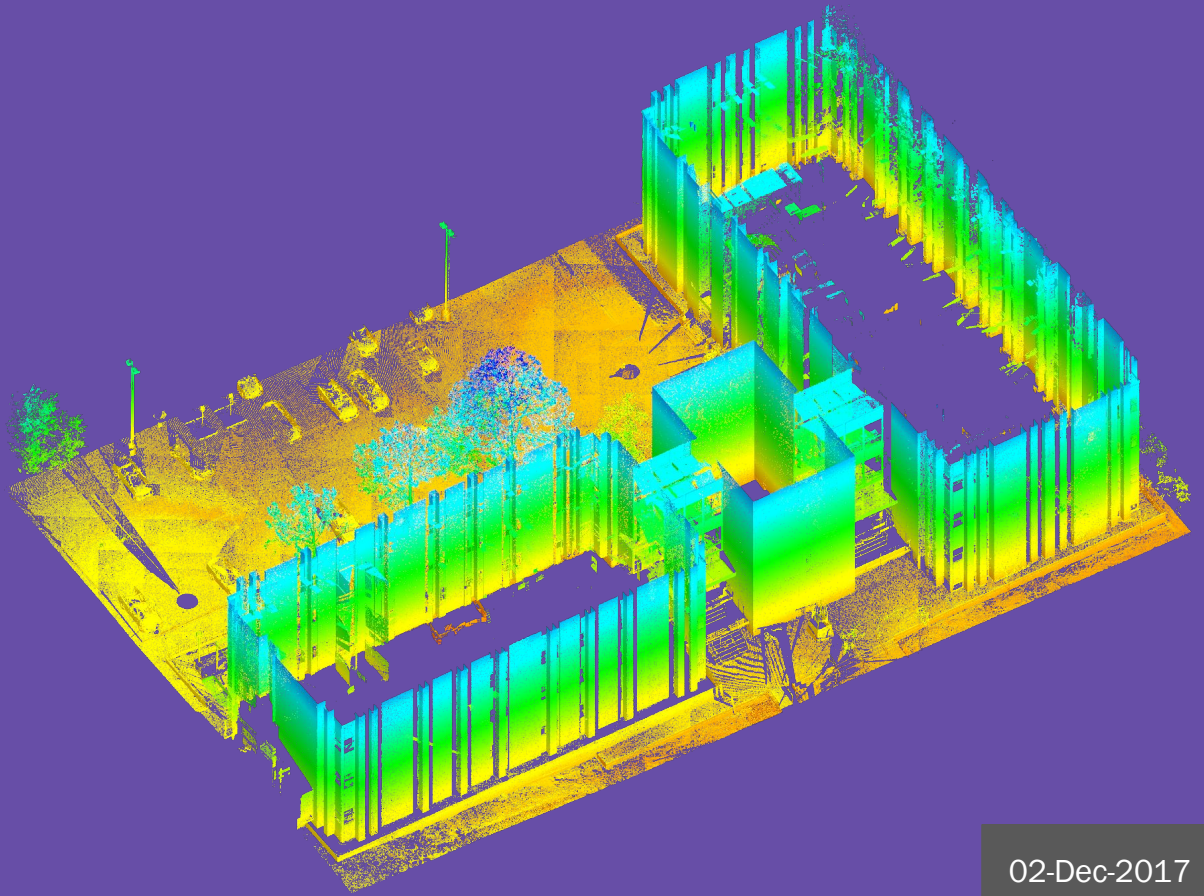
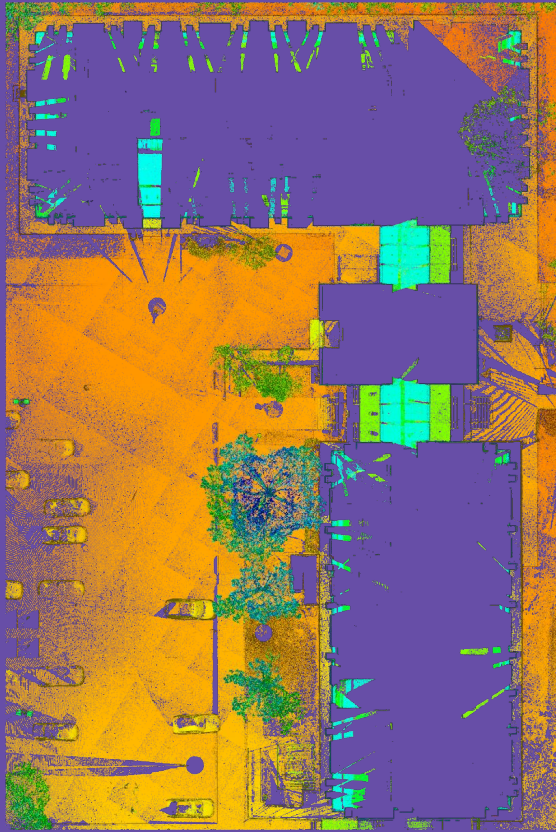
#### IV. 2017 Survey



02-Dec-2017

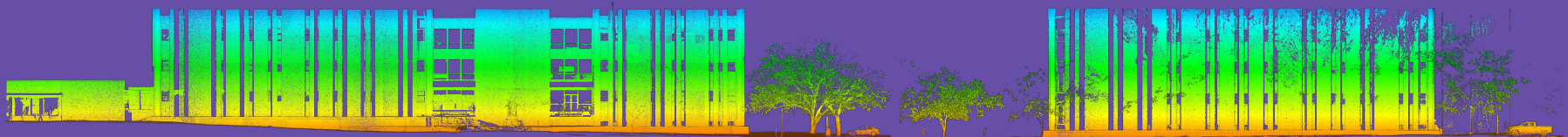


#### IV. 2017 Survey



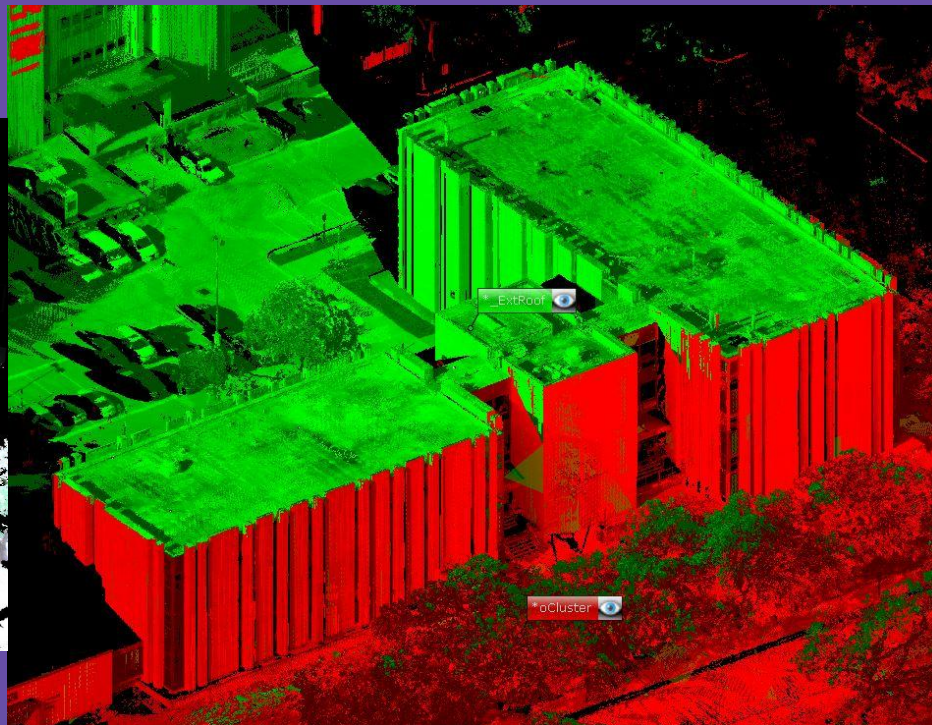
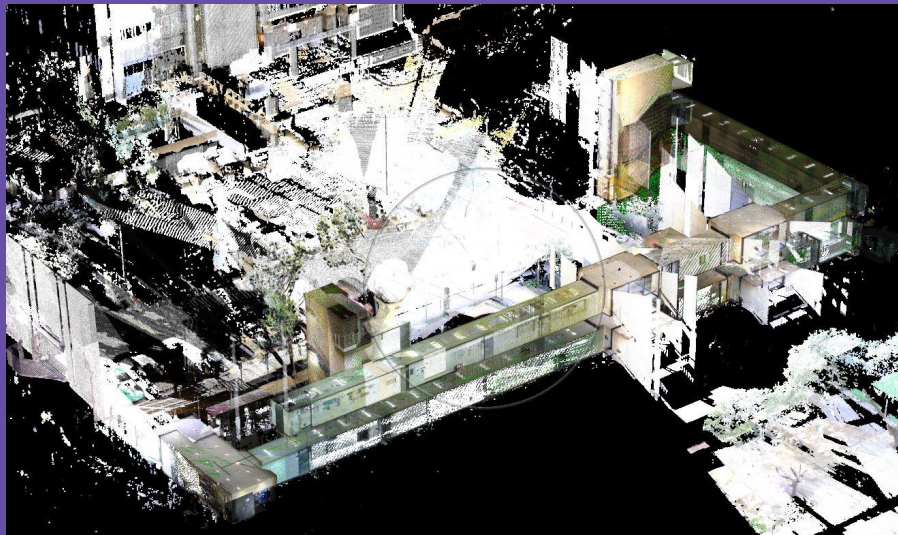
02-Dec-2017

IV. 2017 Survey

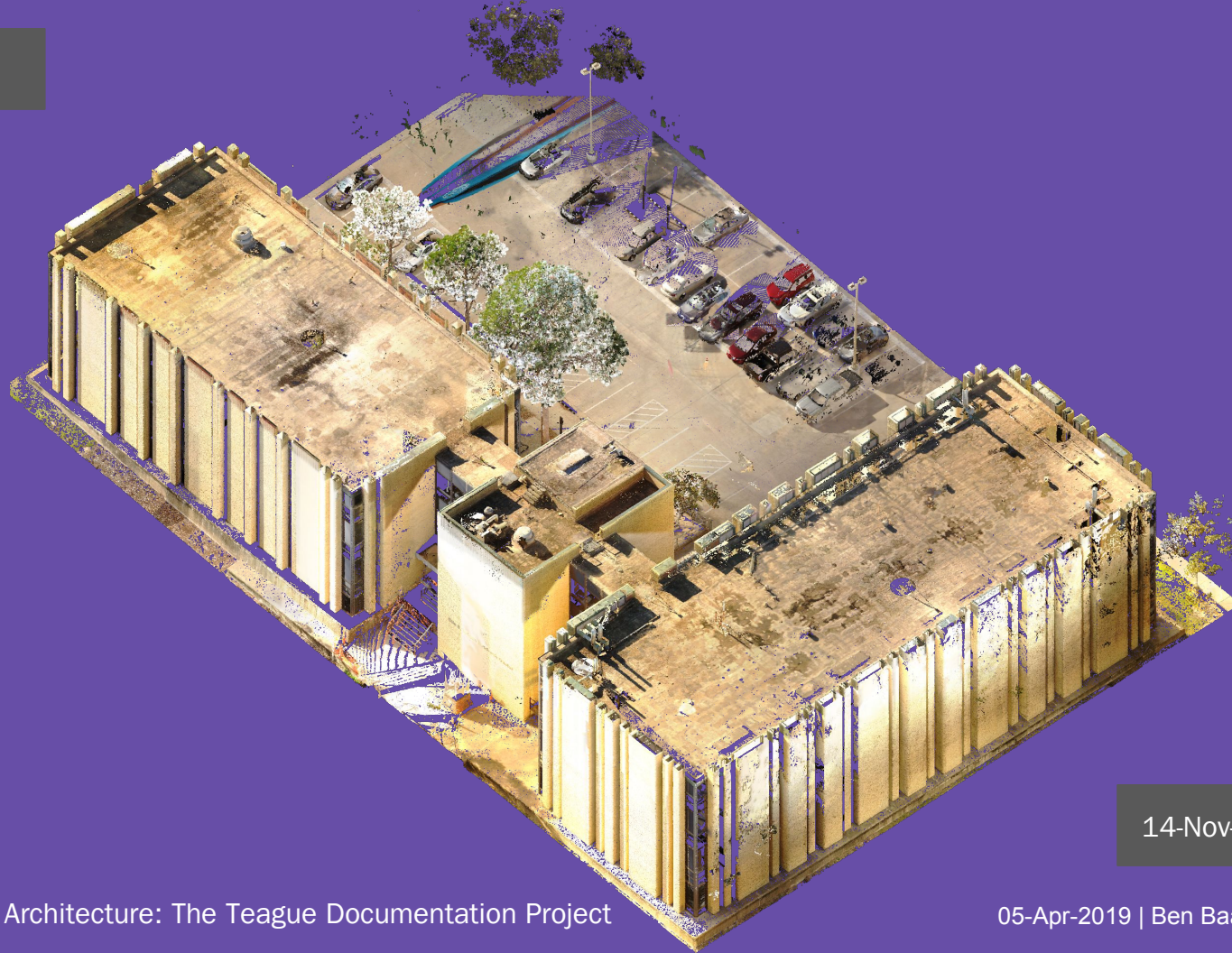


02-Dec-2017





14-Nov-2018



14-Nov-2018



V. 2018 Survey



14-Nov-2018

V. 2018 Survey



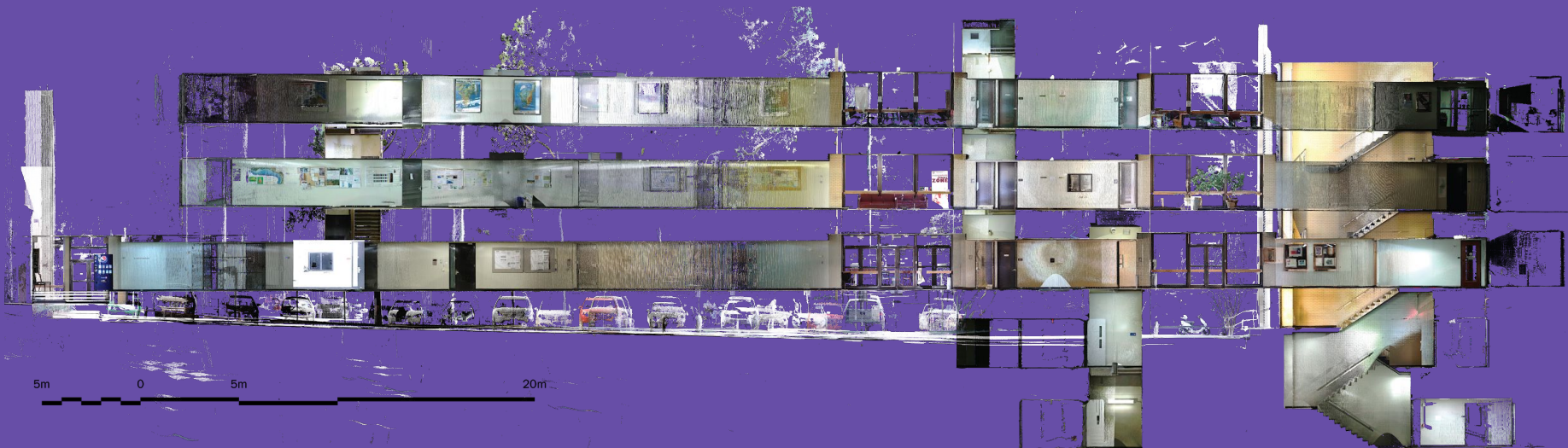
21-Nov-2018





V. 2018 Survey

21-Nov-2018



21-Nov-2018

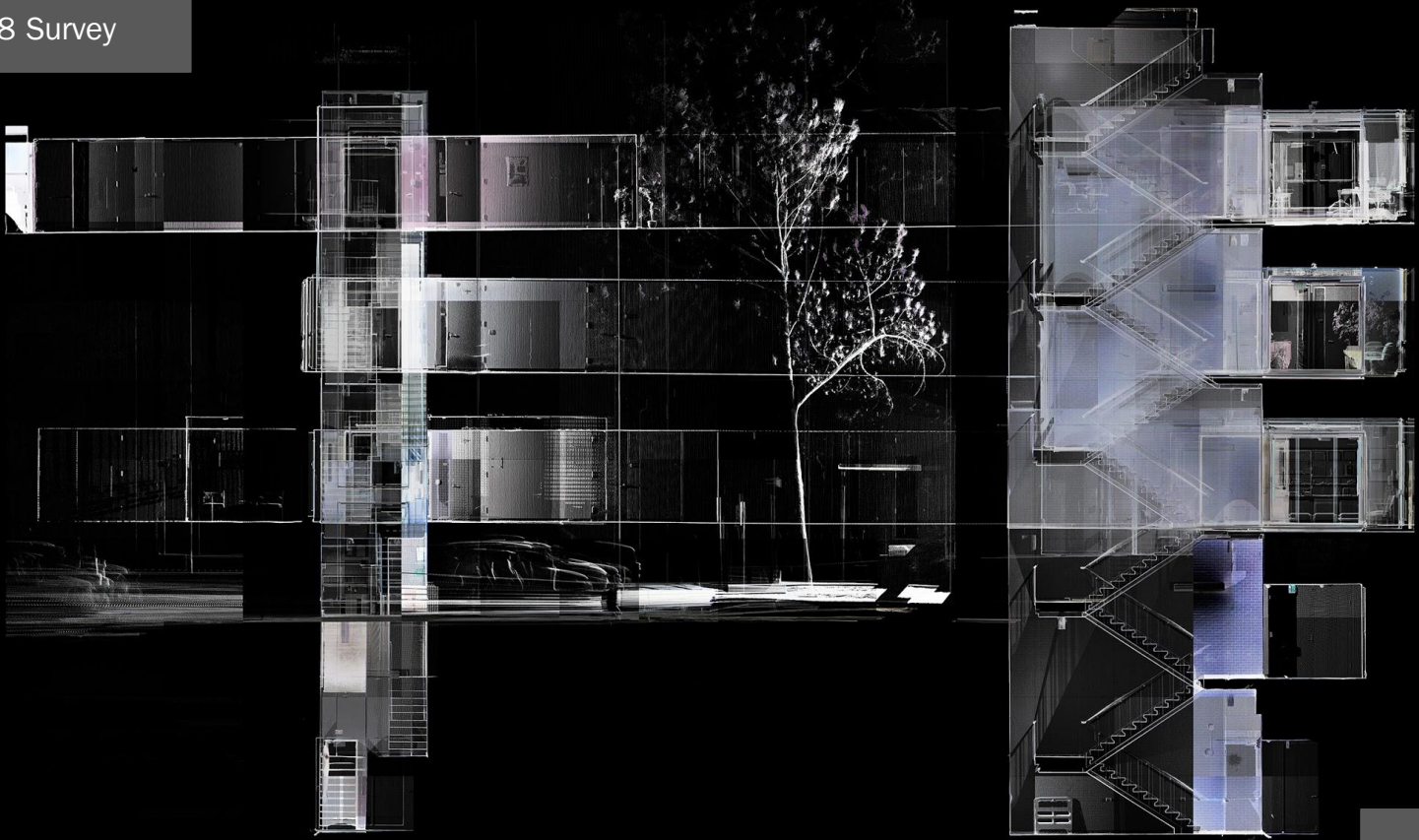


V. 2018 Survey



21-Nov-2018

V. 2018 Survey



21-Nov-2018



V. 2018 Survey

21-Nov-2018

## VI. References

1. Cushing Historical Images Collection: <http://oaktrust.library.tamu.edu/handle/1969.1/97043/discover>
2. Facilities Coordination Texas A&M University: <http://fcor.tamu.edu/downloads/0445.Teague.complete.2011.0406.pdf>
3. The Eagle:  
[http://www.myaggienation.com/campus\\_evolution/building\\_history/olin-e-teague-research-center/article\\_6fa8bf24-11b8-11e3-8e48-0019bb2963f4.html](http://www.myaggienation.com/campus_evolution/building_history/olin-e-teague-research-center/article_6fa8bf24-11b8-11e3-8e48-0019bb2963f4.html)
4. The Association of Former Students:  
[https://www.aggienetwork.com/theassociation/chronology.aspx?ctl00\\_ContentPlaceHolder1\\_chronologyGridChangePage=4\\_100](https://www.aggienetwork.com/theassociation/chronology.aspx?ctl00_ContentPlaceHolder1_chronologyGridChangePage=4_100)
5. *The Bryan-College Station Eagle*
6. *The Battalion*
7. Corp of Cadets: <https://corps.tamu.edu/portfolio-items/olin-teague/>
8. Texas State Historical Association: <https://tshaonline.org/handbook/online/articles/fte32>



Thank you!

Center for Heritage Conservation

Department of Architecture, College of Architecture, Texas A&M University

Texas Old Missions and Forts Restoration Association

San Antonio Conservation Society





