

# Erratum



## Autologous pancreatic islet transplantation in human bone marrow.

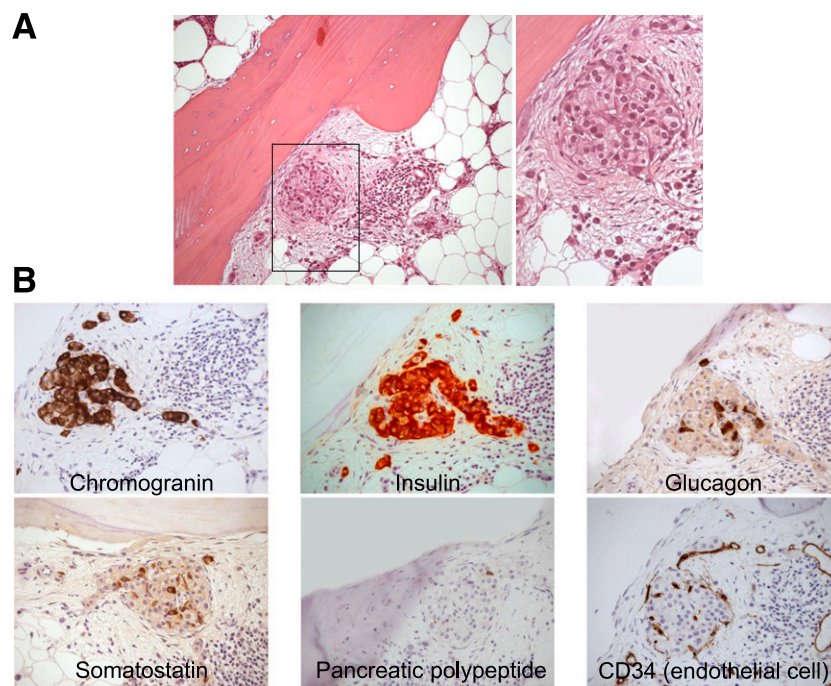
**Diabetes 2013;62:3523–3531**

*Diabetes 2014;63:377 | DOI: 10.2337/db14-er01*

In the article listed above, there is an error in Fig. 3. In panel *B*, the immunohistochemical staining of insulin (*top middle panel*) is incorrect. The corrected Fig. 3 appears below.

The online version reflects these changes.

Paola Maffi, Gianpaolo Balzano, Maurilio Ponzoni, Rita Nano, Valeria Sordi, Raffaella Melzi, Alessia Mercalli, Marina Scavini, Antonio Esposito, Jacopo Peccatori, Elisa Cantarelli, Carlo Messina, Massimo Bernardi, Alessandro Del Maschio, Carlo Staudacher, Claudio Doglioni, Fabio Ciceri, Antonio Secchi, and Lorenzo Piemonti



**Figure 3**—BM morphology at 1 year posttransplantation. Photomicrographs of BM biopsy samples from patient 3. *A*: Histological appearance (*left panel*, magnification 200x; *right panel*, *inset of left panel*, magnification 400x) of transplanted tissue. Hematoxylin and eosin staining. *B*: Representative immunohistochemical stainings (magnification 200x) with anti-insulin, antiglucagon, antichromogranin A, antisomatostatin, antipancreatic polypeptide, and anti-CD34 antibodies.