

Date of publication xxxx 00, 0000, date of current version xxxx 00, 0000.

Digital Object Identifier 10.1109/ACCESS.2017.DOI

Deep C-LSTM Neural Network for Epileptic Seizure and Tumor Detection using High-dimension EEG Signals

YUAN LIU¹, (Senior Member, IEEE), YU-XUAN HUANG¹, XUEXI ZHANG¹, WEN QI², (Student Member, IEEE), JING GUO¹, (Member, IEEE), YINGBAI HU³, (Student Member, IEEE), LONGBIN ZHANG⁴, (Student Member, IEEE), and HANG SU², (Member, IEEE)

¹School of Automation, Guangdong University of Technology, 510006, Guangzhou, China. (e-mail: eeliuyuan@gdut.edu.cn)

²Department of Electronics, Information and Bioengineering, Politecnico di Milano, 20133, Milan, Italy. (e-mail: wen.qi@polimi.it)

³Department of Informatics, Technical University of Munich, 85748, Munich, Germany. (e-mail: yingbai.hu@tum.de)

⁴Department of Mechanics, KTH Royal Institute of Technology, SE-100 44, Stockholm, Sweden. (e-mail: longbin@kth.se)

Corresponding author: Xuexi Zhang (e-mail: zxxnet@gdut.edu.cn).

This work is supported by the National Natural Science Foundation of China with grant No.61803103, Science & Technology Program of Guangdong under Grant 2019B010145001, International Science & Technology Cooperation Program of Guangzhou under Grant 201807010006, International Cooperation Program of Guangdong under Grant 2018A050506044.

ABSTRACT Electroencephalography (EEG) is a common and significant tool for aiding in the diagnosis of epilepsy and studying the human brain electrical activity. Previously, the traditional machine learning (ML)-based classifier are used to identify the seizure by extracting features from the EEG signals manually. Although the effectiveness of these contributions have already been proved, they cannot achieve multiple class classification with automatic feature extraction. Meanwhile, the identifiable EEG segment is too long to limit the capability of real-time epileptic seizure detection. In this paper, a novel deep convolutional long short-term memory (C-LSTM) model is proposed for detecting seizure and tumor in human brain and identifying two eyes statuses (open and close). It achieves to predict a result in every 0.006 seconds with a short detection duration (one second). By comparing with other two types deep learning approaches (DCNN and LSTM), the presented deep C-LSTM obtains the best performance for classifying these five classes. All of the obtained total accuracy are over 98.80%.

INDEX TERMS deep learning, C-LSTM, epileptic seizure, high-dimension electroencephalogram (EEG).

I. INTRODUCTION

EPILEPSY is the most common severe neurological disorder, and nearly 50 million people are diagnosed with epilepsy worldwide [1]. The statistical results from the World Health Organization (WHO) display that 2.4 million people have epilepsy annually. The patients might injure themselves, develop other medical problems, and life-threatening emergencies during seizure activity. More seriously, they will broken bones, concussions, head injury with bleeding into the brain, and breathing difficulty [2]. The overall risk of dying for a person with epilepsy is 1.6 to 3 times higher than for the general population. Sudden unexpected death in epilepsy (SUDEP) is likely the most common disease-related cause of death in epilepsy. It is not frequent, but it is a genuine problem, and people need to be aware of its risk [3]–[6].

The electroencephalogram (EEG) signal is generally used

for epileptic detection as it is a condition related to the brain's electrical activity. Analysis of EEG signal can also be adopted to fascinate advanced human robot interaction [7]–[9]. EEG recordings are recorded digitally for viewing on a computer display unit, which also lends themselves to be automatically analyzed. Using a common language for seizure classification also makes it easier to communicate among clinicians caring for people with epilepsy and doing research on epilepsy. An epileptic seizure can be detected by analyzing the EEG signals, due to large numbers of brain cells are activated abnormally at the same time in the brain during a seizure. Since the treatment of seizures depends on an accurate diagnosis, it is essential to make sure that a patient has epilepsy and knowing what kind of disorder. Separating seizures into different types helps guide further testing, treatment, and prognosis or outlook. The challeng-

ing is locating the ictal spikes and seizures during EEG recording. It is a time-consuming process for an expert to analyze the entire length of the EEG recordings, in order to detect epileptic activity [10]. The possibility of the expert misreading the data and failing to make a proper decision would also be narrowed down due to both massive amounts and increased usage of long-term EEG recordings.

Epilepsy is characterized by the occurrence of recurrent seizures in the EEG signals. During the last decades, many methodologies are proposed to detect epileptic seizures and tumors in the brain based on EEG signals. Although these presented classifiers have achieved perfect classification accuracy, some drawbacks limit their performance. First, most of the previous works only consider binary classification problems because it is difficult to establish a multiple-class model based on the EEG signals, which might decrease the accuracy. Second, few of the contributions consider predicting the seizure with a short-time segment. Traditional classification methods, where the most EEG is reviewed by a trained professional, are very time-consuming when applied to recordings of this length [11]. Traditional feature extraction algorithms will miss several useful information so that decreasing the classification accuracy.

In this paper, we proposed a novel deep C-LSTM neural network structure for epileptic seizure and tumor detection. The main contributions of this paper can be summarized as follows:

- 1) The deep C-LSTM model can classify five brain statuses, including eyes open and close, seizure activity, and two seizure free statuses.
- 2) It enhances the accuracy and achieves noise robustness.
- 3) It can predict the result using a short EEG signal segment (1 second).

The paper is organized as follows: Section II list the previous contributions for seizure detection. The adopted data is described in Section III and the problem statement is introduced in Section IV. Section V describes the data reconstruction, DCNN, LSTM and the proposed deep C-LSTM approaches. Experimental protocol are detailed in Section VI and the acquired comparison results are discussed in Section VII. Moreover, Section VIII drew the conclusions and future works.

II. RELATED WORK

During last decade, several feature extraction methods and classification approaches are present to improve the performance of the built classifier and enhance the seizure detection ability. The Continuous Wavelet Transform (CWT) and Discrete Wavelet Transform (DWT) are the two general methods to extract features for building a classifier [23]. The epileptic seizure recognition dataset which is published on the [UCI machine learning website](#) is mostly used. However, few of the studies consider to classify all of the five classes. Table 1 list several significant contributions for epileptic seizure detection using the traditional machine learning (ML) classification methods and feature extraction approaches.

Most of them consider to classify the seizure activity and normal brain as a binary classification problem. In general, the selected features have three aspects, time-domain, frequency-domain, and time-frequency-domain [24]. The most popular features are Approximate Entropy (ApEn), Sample Entropy (SampEn), Phase Entropy, Average Frequency (AF), Spectral Entropy (SE), Normalized Spectral Entropy (NSE), Spike Rhythmicity (SR), and Relative Spike Amplitude (RSA) [13]. Meanwhile, the most popular and useful ML methods for identifying the seizure by EEG signals are Fuzzy Sugeno (FS), Support Vector Machine (SVM), k-Nearest Neighbour (k-NN), Probabilistic Neural Network (PNN), Decision Tree (DT), Gaussian Mixture Model (GMM), and Naive Bayes (NB) [19].

Recently, many epileptic seizure detection methods based on deep learning (DL) neural network are proposed for enhancing accuracy and automatic feature selection. Table 2 list four current studies using different deep learning methods. All of them get a higher accuracy than the traditional ML approaches, but there are some limitations have not be considered. First, the detection length is too large to achieve a real-time monitoring. Second, few of them can classify multiple classes. Hence, we proposed a novel deep learning based structure to solve the above problems. The deep C-LSTM approach is a popular method applying on many research fields, such as text classification [36], [37], fast biomedical volumetric image segmentation [38], web traffic anomaly detection [39]. This model has proved to obtain a higher classification accuracy by comparing with several previous DL models, such as DCNN and LSTM.

Although all of list previous contributions achieve a high classification accuracy (over 84%), most of the recognized classes number are less than four. Hence, the obtained accuracy are limited. On the other hand, most of the detection length are longer than 2 seconds, which limits the performance of real-time monitoring. Furthermore, noise interference is another problem which will affect the recognition rate. However, none of them consider to solve this problem.

III. DATA DESCRIPTION

The EEG signals for epileptic seizures and tumors are adopted from the UCI machine learning website. The raw data are recorded with the same 128-channel amplifier system, using an average common reference [40]. The dataset consists of five file sets which represent two activities (i.e., eyes open in set A and eyes closed in set B) and three diseases in set C, D, and E. They originated from the EEG archive of presurgical diagnosis. The EEGs are selected from five patients who have achieved complete seizure control after resection of one of the hippocampal formations. Set C record from the opposite hemisphere of the brain within the hippocampal formation, while set D is captured from the epileptogenic zone. However, both of them consider measured the seizure of free intervals. Set E is the epileptic seizure activity. The sampling rate of the data acquisition computer system is 173.61Hz with a 0.53-40Hz (12dB/oct)

Year	Cite	Methodology Features	Classifier	Accuracy	Class	Duration
2004	[12]	self-organized mapping (SOM)	artificial neural network (ANN)	97.2%	2	1s
2005	[13]	frequency-domain, Time-Domain	ANN	99.60%	2	3s
2005	[14]	wavelet transform (WT)	neuro-fuzzy inference system (ANFIS)	98.68%	5	5s
2006	[15]	Lyapunov exponent	Multilayer perceptron Neural Network (MLPNN)	95.50%	3	4s
2007	[16]	approximate entropy (AE)	ANN	100%	2	1.36s
2008	[17]	bispectrum, power spectrum	Gaussian mixture model (GMM)	93.11%	3	2.98s
2011	[18]	Genetic programming (GP)	K-nearest neighbor (KNN)	99.20%	2	1.32s
2012	[19]	entropy	Fuzzy	98.10%	3	4s
2015	[20]	Empirical Mode Decomposition (EMD)	SVM	98.69%	2	2.98s
2016	[21]	Dual-tree Complex Wavelet Transform (DT-CWT)	Normal Inverse Gaussian (NIG)	100%	3	1.47s
2017	[6]	Wavelet Packets (WPs)	Support Vector Machine (SVM)	95.15%~99.64%	2	1.36s
2017	[22]	Multi-domain and nonlinear analysis	SVM	99.25%	5	10s

TABLE 1: Related works on EEG-based epileptic seizure recognition using traditional machine learning approaches.

Year	Cite	Methodology	Layer	Accuracy	Class	Duration
2016	[25]	CNN	2	87.51%	2	80ms
2016	[26]	Cloud-based deep learning	5	91.11%	2	4s
2017	[27]	Deep Neural Network	4	95%	2	10s
2018	[1]	DCNN	13	88.67%	3	5s
2018	[28]	channel-aware attention mechanism	23	96.61%	2	-
2018	[29]	Long Short-Term Memory	2	99.86%	2	5s
2018	[30]	CNN	29	84.2%	2	5min
2018	[31]	pyramidal one-dimensional CNN	3	99.8%	2	10s
2019	[32]	deep LSTM	80 nodes	100%	5	2s
2019	[33]	DCNN	4	93.3%	2	5s
2019	[34]	DCNN	3	95.7%	3	2s
2019	[35]	DCNN	2	91.8%	3	20s

TABLE 2: Related works on EEG-based epileptic seizure recognition using deep learning approaches.

band-pass filter settings.

Fig. 1 shows the collected EEG signals representing the mentioned five activities and diseases. Each original dataset consists of 100 files, with each file representing a single subject/person. Each file is a recording of brain activity for 23.6 seconds. The corresponding time-series is sampled into 4097 data points. Each data point is the value of the EEG recording at a different point in time. So we have total of 500 individuals with each has 4097 data points for 23.5 seconds.

In this paper, we adopt a sliding window strategy with fixed detection length and overlap to recognize the epileptic seizure activities and identify the other classes.

IV. PROBLEM STATEMENT

The aim of the epileptic seizure and tumor detection can be regarded as a multiple-class classification problem using 100 dimensions EEG signals. The following notations describe the procedure of classifier establishing and prediction. Let's assume the labeled sequence as $(s_i, y_i), i = 1, 2, \dots, N$. N is the length of the whole collected dataset. As it is described in Section III, each input matrix $s_i \in \mathbb{R}^{100 \times L_d}$. L_d is the detection length. $y \in \Lambda$ a discrete class label. In this article, there are five classes (see Fig. 1), i.e., eyes open (A), eyes close (B), seizure free Hippocampal (C), seizure free Epileptogenic zone (D), and seizure activity (E).

The first step is to establish five classes classifier by the proposed DL model based on the labeled training couples $(s_p, y_p), p = 1, 2, \dots, M$. M is the number of couples in

the training dataset and $M \leq N$. The built DL classifier can be denoted as:

$$y_p = f(s_p, \theta) \quad (1)$$

, where θ is the whole parameters of the DL model. The testing procedure can be regarded as a supervised way. When a new input s_t acquired, the DL classifier can predict the result as $\hat{y}_t = f(s_t, \theta)$. The recognition error ε can be calculated by comparing \hat{y}_t with truth label y_t as follows:

$$\varepsilon(y, s) = \frac{1}{T} \sum_{t=1}^T [y_t \neq f(s, \theta)] \quad (2)$$

where

$$[y_t \neq f(s_t, \theta)] = \begin{cases} 1, & y_t \neq f(s_t, \theta) \\ 0, & y_t = f(s_t, \theta) \end{cases} \quad (3)$$

, where T is the length of testing dataset. The DL classifier f aims to find the optimal parameter set θ by

$$\arg \min_{\theta \in \Theta} \varepsilon(y, s). \quad (4)$$

Θ is the overall set of DL parameters.

V. METHODOLOGY

A novel Deep C-LSTM structure is designed to implement a multiple-target classifier for accuracy enhancement and noise robustness. To achieve the claims, it needs to reconstruct the raw EEG signals for preparing the training and testing datasets and establish the C-LSTM neural network.

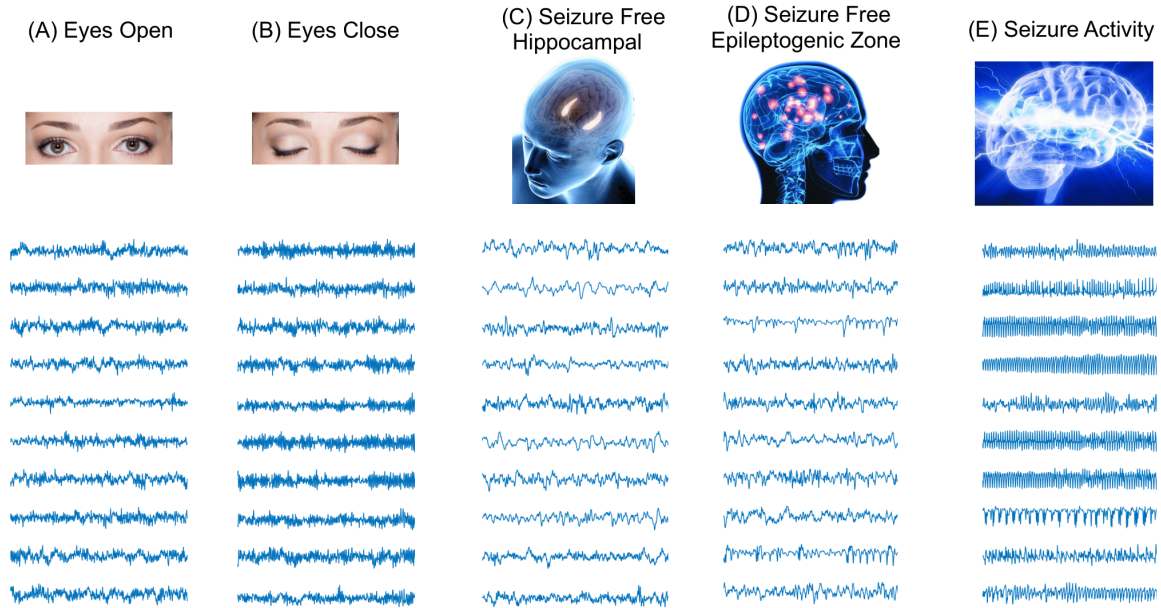


FIGURE 1: The schematic diagram of the collected five EEG datasets. Set A and B are the awake state of eyes open and close, respectively. Set C and D are the selected EEG signals from the hippocampal and epileptogenic zone during seizure-free intervals. Set E is the seizure activity.

A. DATA RECONSTRUCTION

To build the DL-based classifier for identifying the five brain status, specially epileptic seizure recognition, a sliding window strategy [41] is adopted with the fixed detection length L_d and overlap L_o . As it is described in Section III, the raw EEG signals is a time-varying sequence with 100 dimensions. Hence, each EEG segment is reconstructed as a $s_t \in \mathbb{R}^{100 \times L_d}$ matrix. Finally, the inputs can be regarded as a sequence $\{s_1, s_2, \dots, s_t\}$ which changes over time (see Fig. 2).

B. DEEP CONVOLUTIONAL NEURAL NETWORK

Fig. 2 shows the typical architecture of a deep convolutional neural network (DCNN). In general, it includes five layers: convolutional, batch normalization (BN), rectified linear (ReLU) function, dropout layer, full connection (FC) layer, and a softmax layer.

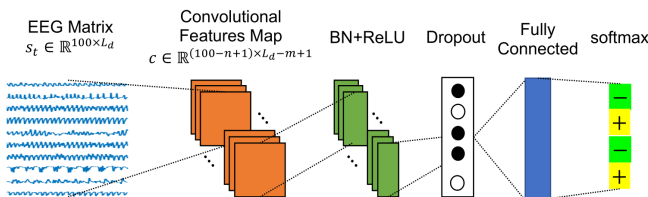


FIGURE 2: The typical deep convolutional neural network (DCNN) structure for EEG classification. It consists of a convolutional layer, batch normalization layer, a rectified linear (ReLU) function, a dropout layer, a full connection (FC) layer, and a softmax layer for classification.

First, the patterns will be extracted from the reconstructed

input matrix $s_t \in \mathbb{R}^{100 \times L_d}$ by the designed convolutional layer with a filter $F \in \mathbb{R}^{n \times m}$. The convolution operation is to obtain the features matrix $c_t \in \mathbb{R}^{(100-n+1) \times (L_d-m+1)}$ by computing the convolution results between s_t and F as follows:

$$c^i = (s * F)^i = \sum_{k,p} (s^{[j-n+1:j,i-m+1:i]} \otimes F)_{kp} \quad (5)$$

where $s^{[j-n+1:j,i-m+1:i]}$ is a sub-matrix of size m along the columns and the operator \otimes is the element-wise multiplication. By sliding along the column dimension of s , each component c^i is acquired as an element-wise product, which is a single value as shown in Fig. 2.

The single filter is used to compute a convolution by implementing the input matrix. To form a more vibrant representation of the EEG signals, the DCNN model applies a set of filters to compute the convolutional matrices in parallel. Then, the obtained multiple feature maps can be denoted as $c \in N @ n \times m$, where N is the number of filters (also shown in Fig. 2). Meanwhile, a bias vector $b \in N$ is added to the convolution results so that they can learn an appropriate threshold.

However, the full whitening of the convolutional outputs is costly and indistinguishable in every column. To solve these problems, a typical DCNN model adopts two necessary simplifications BN and ReLU. The BN layer aims to joint the inputs and outputs and normalizes the computed features independently. Especially, it is made as a sequence with the mean of zero and the variance of one. More details, the d -dimensional convolutional inputs $c = \{c_1 \dots c_d\}$ can be

normalized as follows:

$$\hat{c}^k = \frac{c^k - \bar{c}^k}{\sqrt{\sigma(c^k)}} \quad (6)$$

This step speeds up convergence even though some features are not decorrelated [42]. However, the representation of the layer might be changed due to the merely normalizing each input of a layer. Notably, it will constrain the inputs to the linear regime of the nonlinearity by a sigmoid normalizing operation. Hence, a pair of parameters γ^k and β^k are introduced to scale and shift the normalized value:

$$y^k = \gamma^k \hat{c}^k + \beta^k \quad (7)$$

Then, the representation power of the network can be restored by learning along with these parameters. $y \in \Lambda$ is a discrete class label.

The non-linear activation function is adopted to enable the learning of non-linear decision boundaries. In this paper, we use the ReLU function to build the DCNN model to enhance accuracy and accelerate calculation.

To prevent the DCNN model from overfitting, we add a dropout layer with a rate of 0.3 before passing to the FC and softmax layer. The probability distribution over the classes can be computed as follows:

$$P(y = q|c, w, b) = \frac{\text{softmax}_q(c^\top w + b)}{\sum_{v=1}^V e^{c^\top w_q + b_q}} \quad (8)$$

, where w and b are the weights and bias of the v -th label [43].

C. RECURRENT NEURAL NETWORK

As a special RNN structure, the LSTM network has proven robust and powerful for modeling a general-purpose sequence with long-range dependencies in time-varying studies [44]. Due to the collected EEG signals are the time-based sequence, the current status has a strong relationship with the previous environment. The LSTM model is the best choice to solve this problem. As shown in Fig. 3, the memory cell c_t in the LSTM module, can accumulate the state information by accessing, writing, and clearing the several self-parameterized controlling gates. If the gate is activated, the information will be accumulated to the cell. If the forget gate f_t is not on, the past cell c_{t-1} will be saved. Otherwise, the previous information could be “forgotten”. The output gate o_t can control whether it needs to propagate the latest cell output c_t and the final state h_t .

The related equations can be expressed as follows:

$$\begin{aligned} i_t &= \sigma(\Omega_i \cdot [h_{t-1}, x_t] + b_i) \\ f_t &= \sigma(\Omega_f \cdot [h_{t-1}, x_t] + b_f) \\ o_t &= \sigma(\Omega_o \cdot [h_{t-1}, x_t] + b_o) \\ c_t &= f_t \circ c_{t-1} + i_t \circ \tanh(\Omega_c \cdot [h_{t-1}, x_t] + b_c) \\ h_t &= o_t \circ \tanh(c_t) \end{aligned} \quad (9)$$

, where x_t is the input sequences.

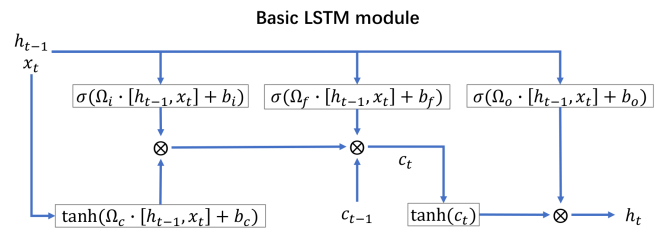


FIGURE 3: The diagram of long-short term memory (LSTM) unit.

D. THE PROPOSED DEEP C-LSTM ARCHITECTURE

Although both DCNN and LSTM models are proven powerful to hand time sequence and noise robustness, they can not keep a high and stable classification accuracy while the LSTM model contains too much redundancy resulting in time-consuming. To address these problems, we proposed a deep convolutional-LSTM (C-LSTM) model to classify the five classes EEG signals. Fig. 4 display the architecture of the designed deep C-LSTM network, which consists of a DCNN module and LSTM networks. The DCNN structure aims to extract the features and reduce the dimension of the raw EEG signals. The LSTM layer is to enhance recognition accuracy.

In the DCNN module, two convolutional networks are adopted with the same size of filter 8×8 . The first CNN layer has four filters, while the second one has eight. The rate of dropout layer is 0.3, and the neurons of the FC layer is set as 10. Hence, the size of the parameters matrix obtained from the first FC layer is 10. The LSTM layer has 30 neurons, then the parameters matrix of the second FC layer is 5×30 .

The parameters of each layer in the proposed deep D-LSTM frame are described as follows:

- **Inputs:** As it is described in Section V-A, the input can be regarded as a $100 \times L_d$ matrix, because the raw EEG signal have 100 dimensions. Fig. 4 shows the an input EEG matrix with 1 second, namely $L_d \approx 174$.
- **Deep Convolution Neural Network:** In the DCNN model, there are two similar convolutional modules designed with different parameters. Both of them have a convolutional layer, BN, and ReLU function. The two 2D CNN layers use the same size of filter, namely 8×8 , which have four and eight window sizes, respectively. Hence, the size of yielded feature map are $93 \times (L_d - 7)$ and $86 \times (L_d - 14)$. The BN layer aims to learn by each layer of CNN operation independently of other layers. The ReLU activation function is to avoid the problems of vanishing gradient and exploding gradient [45]. To process the problems of large data and parameters, we use the "Adam" optimizer for adaptive estimates of lower-order moments [46]. This method is proved to be implemented straightforwardly and computationally efficient. Furthermore, it has little memory requirements. We set the initial learn rate at 0.005. The learn drop period and factor are 50 and 0.1, respectively.
- **LSTM:** A LSTM network with 30 nodes are used to

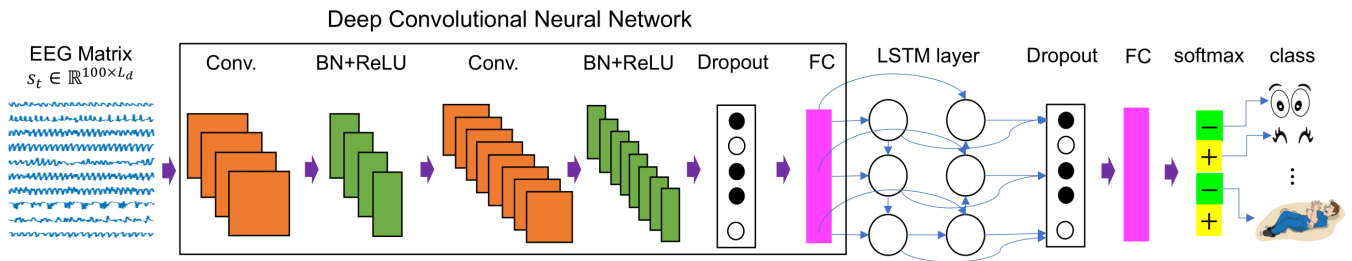


FIGURE 4: The architecture of deep C-LSTM method for multiple classes classification. It includes a DCNN module to extract features automatically and an LSTM layer for identifying the five labels.

learn the information from the time sequence. Similarly, the LSTM model also adopts the "Adam" optimizer. The learning rate is set as 0.005 with a 0.2 drop factor and 5 drop period.

- **Dropout:** To solve the over-fitting problem, two dropout layers are adopted behind the ReLU function and LSTM layer. Meanwhile, the dropout network aims to improve the generalization error along with the increasing layers of the neural networks [47]. It also can reduce the training time so that avoiding the time-consuming phenomenon. We set a 0.5 percentage of the two dropout networks.
- **softmax:** After acquiring the output from the FC layer, the softmax activation function is adopted to turn probabilities to logic numbers. After obtaining the probability of each input of nodes in softmax layer, the highest values will be selected as the final classification results [48].

VI. EXPERIMENTAL PROTOCOL

A. DATASET SETTING

As it is described in Section III, the used EEG dataset have 4097×5 samples (23.6×5 seconds). We choose three types detection length (1s, 1.5s, and 2s) to evaluate the classification accuracy. For each experiment, we adopt two strategies for building the training and testing datasets, namely 50% – 50% and 60% – 40%. For example, the 50% – 50% experiment means it uses half of EEG data to train the classifier and the rest half data for evaluation. To enhance the persuasiveness of the experiment, we selected arbitrary 50% segments, and run the experiment over 20 times to obtain the average and standard deviation of the classification results.

B. EVALUATION PARAMETERS

We adopt overall accuracy to evaluate the total classification accuracy of classifiers. The computational equations are defined by Eqs. 2 and 3. For evaluating the performance of each binary classification task, sensitivity and F1-score are used. Sensitivity aims to measure the proportion of actual positives that are correctly identified. A high F1 score means that the classifier has low false positives and low false negatives. Sensitivity and F1-score can be calculated by the following

equations:

$$\text{sensitivity} = \frac{TP}{TP+FN}$$

$$\text{precision} = \frac{TP}{TP+FP} \quad (10)$$

$$\text{F1-score} = 2 \frac{\text{sensitivity} \cdot \text{precision}}{\text{sensitivity} + \text{precision}}$$

, where TP and FP demote the number of true positives and false positives, respectively. TP means the model correctly predicts positive class, while FP indicates the model incorrectly predicts positive class. Similarly, FN and TN are the numbers of false negatives, and true negatives, which means the model incorrectly predicts negative class, and the model predicts negative class correctly. The best value for F1-score and sensitivity is 1.

VII. RESULTS AND DISCUSSION

A. CLASSIFICATION PERFORMANCE

The Epileptic detection performance of the proposed deep C-LSTM model was evaluated by comparing the overall accuracy, F1-score, and sensitivity. For avoiding the overfitting problem of the neural network method, all of the experiments are run more than 20 times. In table 3, the proposed deep C-LSTM model obtains the high total accuracy than the other two types of DL methods in both 50% – 50% and 60% – 40% strategies. The comparison results also prove that the deep C-LSTM approach can classify the five classes using a short detection period (1s, 1.5s, and 2s) with a high recognition rate (more than 98.80%).

However, the total accuracy cannot describe the performance of the multi-class classification and the ability of the classifier. As it is described above, F1-score and sensitivity are the two main measurement parameters to evaluate the classification ability of each class. Hence, both qualitative and quantitative analyzing methods are adopted to evaluate the sensitivity and robustness ability in Fig. 5. The DCNN model with two layers of CNN modules is an unstable classifier, which is unsuitable to be used for epileptic seizure detection. The LSTM model shows a lower F1-score value to recognize the seizure activity while the proposed deep C-LSTM method acquired the best F1-score in each binary classification task, which proves that it is the best method for accuracy enhancement and robustness.

Methods	Overall Accuracy					
	50%-50%			60%-40%		
	1s	1.5s	2s	1s	1.5s	2s
DCNN	78.65 ± 0.08	77.82 ± 0.24	76.42 ± 0.13	74.71 ± 0.15	85.50 ± 0.13	85.00 ± 0.16
LSTM	82.00 ± 0.03	69.47 ± 0.15	63.58 ± 0.05	85.22 ± 0.03	76.89 ± 0.03	62.69 ± 0.05
deep C-LSTM	99.74 ± 0	98.80 ± 0.02	99.14 ± 0.01	99.30 ± 0.01	99.83 ± 0	99.31 ± 0.02

TABLE 3: The comparison total accuracy among DCNN, LSTM and deep C-LSTM.

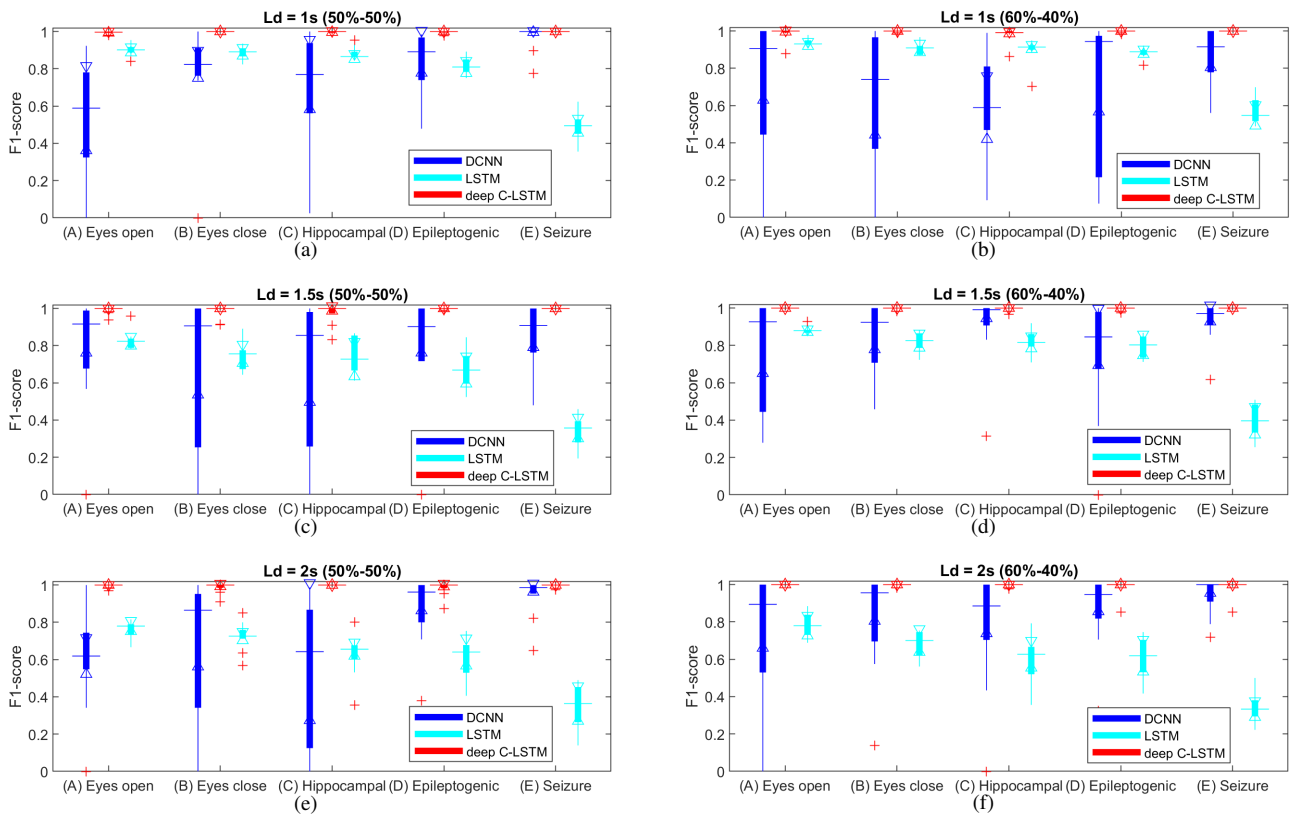


FIGURE 5: The comparison F1-score among DCNN, LSTM, and deep C-LSTM approaches. From the top graph to the bottom graph, the detection lengths are 1s, 1.5s, and 2s, respectively. The left column is the results testing on 50%-50% strategy, while the 60%-40% strategy obtains the right three graphs.

Similarly, the average sensitivity of each class is computed in Fig. 6. Although the proposed deep C-LSTM gets the best sensitivity, the comparison results show that the DCNN model is good at recognizing the seizure activity, while the LSTM model cannot. Nevertheless, it gets a higher recognition rate for identifying the eyes open and close.

B. NOISE ROBUSTNESS

To implement this model to practical operation, it is necessary to acquire the noise robustness. Hence, various Gaussian noise sources are generated to the input at each epoch in the network training [49]–[51]. It aims to estimate the noise status of deep C-LSTM model by measuring standard deviation of actual noise. In this experiment, the proposed deep C-LSTM method is evaluated by comparing the DCNN and LSTM approaches because noise robustness depends on the regularization method and the selection of the hyperparam-

ter.

By using various Gaussian noise source, such as different signal-noise rate (SNR), it can evaluate the noise robustness with the proposed deep C-LSTM model. In this experiment, we choose two SNR values, i.e., 10dB and 30dB. For more details evaluation, the F1-score, sensitivity, and overall accuracy are compared. Table 4 displays that the proposed deep C-LSTM model has a better ability of noise robustness. Most of the F1-score and sensitivity are close to 1.

To enhance the persuasiveness of the experiment, we add 20dB SNR to compare the overall accuracy among DCNN, LSTM, and C-LSTM. The proposed deep C-LSTM not only obtains the highest average accuracy (over 99.38%) but also gets the lowest standard deviation.

Parameter	Class	10dB			30dB		
		DCNN	LSTM	deep C-LSTM	DCNN	LSTM	deep C-LSTM
F1-score	A	0.88 ± 0.29	0.99 ± 0	0.99 ± 0.03	0.69 ± 0.43	0.98 ± 0.01	0.99 ± 0.02
	B	0.95 ± 0.14	0.99 ± 0.01	1 ± 0	0.86 ± 0.31	0.98 ± 0.01	0.99 ± 0.02
	C	0.86 ± 0.31	0.98 ± 0.01	0.99 ± 0.03	0.81 ± 0.31	0.97 ± 0.01	0.98 ± 0.03
	D	0.99 ± 0.01	0.97 ± 0.01	1 ± 0	0.99 ± 0.01	0.95 ± 0.01	1 ± 0
	E	0.99 ± 0.02	0.92 ± 0.02	1 ± 0	0.96 ± 0.08	0.90 ± 0.02	1 ± 0
Sensitivity	A	0.90 ± 0.29	1 ± 0	1 ± 0	0.66 ± 0.44	1 ± 0	1 ± 0
	B	0.97 ± 0.06	1 ± 0	1 ± 0	0.85 ± 0.33	1 ± 0	1 ± 0
	C	0.84 ± 0.32	1 ± 0	0.98 ± 0.06	0.88 ± 0.30	0.98 ± 0.01	0.98 ± 0.05
	D	0.99 ± 0.02	0.99 ± 0	1 ± 0	0.99 ± 0	0.97 ± 0.01	1 ± 0
	E	1 ± 0	0.86 ± 0.03	1 ± 0	1 ± 0	0.84 ± 0.04	1 ± 0

TABLE 4: The comparison results among DCNN, LSTM, and deep C-LSTM with two SNR values (10dB and 30dB).

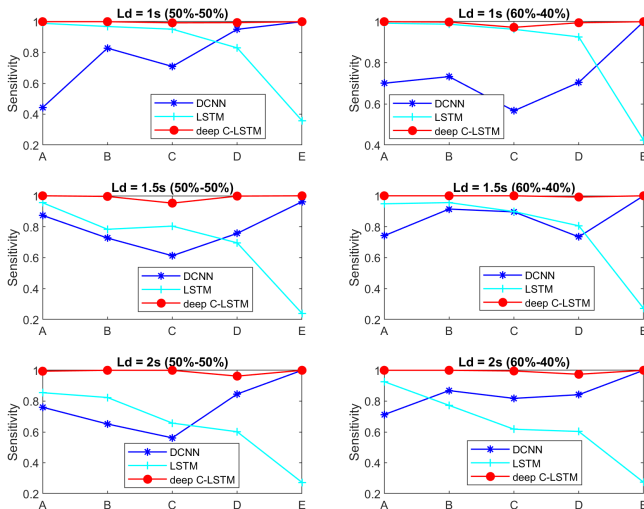


FIGURE 6: The comparison average values of sensitivity among DCNN, LSTM, and deep C-LSTM models.

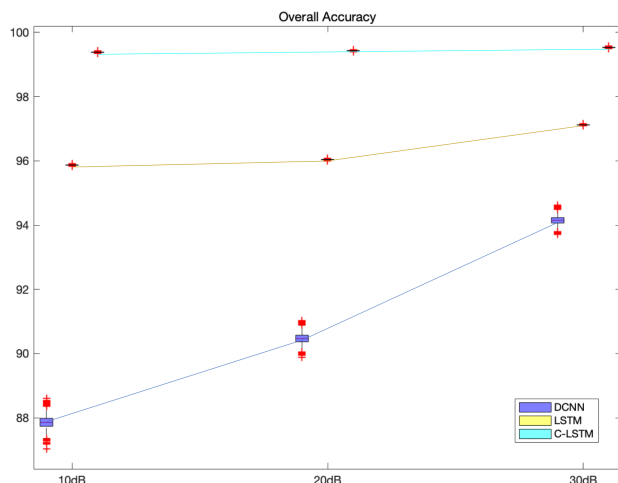


FIGURE 7: The comparison results of overall accuracy among DCNN, LSTM, and deep C-LSTM models.

VIII. CONCLUSION

In this paper, we proposed a novel deep C-LSTM model to detect epileptic seizures and tumors in the human brain. A five classes dataset is adopted to evaluate the performance of the deep C-LSTM method. Meanwhile, the ability of noise robustness is proved by adding different white noises in the raw EEG signals. The deep C-LSTM method is proved for recognizing epileptic seizure with short detection length (1 second). By comparing with LSTM and DCNN approaches, the deep C-LSTM model improves multiple-class classification accuracy and noise robustness. However, these model-based methods are generally vulnerable to model errors and unexpected measurement noise, computationally expensive. This aspect needs to be more investigated in the future.

The trained deep C-LSTM model is expected to be applied to the practical operation of epileptic seizures and tumor detection. Due to the limitation of the dataset, the built deep C-LSTM model should be improved by training on a larger dataset.

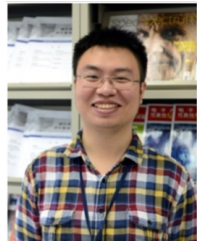
Despite some defects of the deep C-LSTM model, this approach is still promising because an improved performance can be achieved easily from the dataset, which simulates various uncertain conditions such as measurement noise and the classification accuracy.

REFERENCES

- [1] U. R. Acharya, S. L. Oh, Y. Hagiwara, J. H. Tan, and H. Adeli, "Deep convolutional neural network for the automated detection and diagnosis of seizure using eeg signals," *Computers in biology and medicine*, vol. 100, pp. 270–278, 2018.
- [2] J. O. Elliott and L. Long, "Perceived risk, resources, and perceptions concerning driving and epilepsy: a patient perspective," *Epilepsy & Behavior*, vol. 13, no. 2, pp. 381–386, 2008.
- [3] R. TALLIS, G. HALL, I. CRAIG, and A. DEAN, "How common are epileptic seizures in old age?" *Age and ageing*, vol. 20, no. 6, pp. 442–448, 1991.
- [4] C. Camfield and P. Camfield, "Injuries from seizures are a serious, persistent problem in childhood onset epilepsy: a population-based study," *Seizure*, vol. 27, pp. 80–83, 2015.
- [5] J. A. Salpekar and M. Mula, "Common psychiatric comorbidities in epilepsy: how big of a problem is it?" *Epilepsy & Behavior*, 2018.
- [6] A. Ahmadi, V. Shalchyan, and M. R. Daliri, "A new method for epileptic seizure classification in eeg using adapted wavelet packets," in 2017 Electric Electronics, Computer Science, Biomedical Engineering's Meeting (EBBT). IEEE, 2017, pp. 1–4.
- [7] Z. Li, B. Huang, A. Ajoudani, C. Yang, C.-Y. Su, and A. Bicchi, "Asymmetric bimanual control of dual-arm exoskeletons for human-cooperative manipulations," *IEEE Transactions on Robotics*, vol. 34, no. 1, pp. 264–271, 2017.

- [8] Z. Li, J. Li, S. Zhao, Y. Yuan, Y. Kang, and C. P. Chen, "Adaptive neural control of a kinematically redundant exoskeleton robot using brain-machine interfaces," *IEEE transactions on neural networks and learning systems*, 2018.
- [9] Z. Li, Y. Yuan, L. Luo, W. Su, K. Zhao, C. Xu, J. Huang, and M. Pi, "Hybrid brain/muscle signals powered wearable walking exoskeleton enhancing motor ability in climbing stairs activity," *IEEE Transactions on Medical Robotics and Bionics*, 2019.
- [10] N. Sivakumaran, E. Sathish, K. Radhakrishnan, S. Raghavan, M. Rajajeyakumar et al., "Importance of classification algorithms in epileptic seizure detection," *J. Bioeng. Biomed. Sci.*, vol. 6, no. 3, 2016.
- [11] D. Gajic, Z. Djurovic, S. Di Gennaro, and F. Gustafsson, "Classification of eeg signals for detection of epileptic seizures based on wavelets and statistical pattern recognition," *Biomedical Engineering: Applications, Basis and Communications*, vol. 26, no. 02, p. 1450021, 2014.
- [12] V. P. Nigam and D. Graupe, "A neural-network-based detection of epilepsy," *Neurological research*, vol. 26, no. 1, pp. 55–60, 2004.
- [13] V. Srinivasan, C. Eswaran, Sriraam, and N., "Artificial neural network based epileptic detection using time-domain and frequency-domain features," *Journal of Medical Systems*, vol. 29, no. 6, pp. 647–660, 2005.
- [14] I. Güler and E. D. Übeyli, "Adaptive neuro-fuzzy inference system for classification of eeg signals using wavelet coefficients," *Journal of neuroscience methods*, vol. 148, no. 2, pp. 113–121, 2005.
- [15] E. D. Übeyli, "Analysis of eeg signals using lyapunov exponents," *Neural Network World*, vol. 16, no. 3, p. 257, 2006.
- [16] V. Srinivasan, C. Eswaran, and N. Sriraam, "Approximate entropy-based epileptic eeg detection using artificial neural networks," *IEEE Transactions on Information Technology in Biomedicine*, vol. 11, no. 3, pp. 288–295, 2007.
- [17] K. C. Chua, V. Chandran, R. Acharya, and C. M. Lim, "Automatic identification of epilepsy by hos and power spectrum parameters using eeg signals: A comparative study," in *2008 30th Annual International Conference of the IEEE Engineering in Medicine and Biology Society. IEEE, 2008*, pp. 3824–3827.
- [18] L. Guo, D. Rivero, J. Dorado, C. R. Munteanu, and A. Pazos, "Automatic feature extraction using genetic programming: An application to epileptic eeg classification," *Expert Systems with Applications*, vol. 38, no. 8, pp. 10425–10436, 2011.
- [19] U. R. Acharya, F. Molinari, S. V. Sree, S. Chattopadhyay, K.-H. Ng, and J. S. Suri, "Automated diagnosis of epileptic eeg using entropies," *Biomedical Signal Processing and Control*, vol. 7, no. 4, pp. 401–408, 2012.
- [20] R. Sharma and R. B. Pachori, "Classification of epileptic seizures in eeg signals based on phase space representation of intrinsic mode functions," *Expert Systems with Applications*, vol. 42, no. 3, pp. 1106–1117, 2015.
- [21] A. B. Das, M. I. H. Bhuiyan, and S. S. Alam, "Classification of eeg signals using normal inverse gaussian parameters in the dual-tree complex wavelet transform domain for seizure detection," *Signal, Image and Video Processing*, vol. 10, no. 2, pp. 259–266, 2016.
- [22] L. Wang, W. Xue, Y. Li, M. Luo, J. Huang, W. Cui, and C. Huang, "Automatic epileptic seizure detection in eeg signals using multi-domain feature extraction and nonlinear analysis," *Entropy*, vol. 19, no. 6, p. 222, 2017.
- [23] O. Faust, U. R. Acharya, H. Adeli, and A. Adeli, "Wavelet-based eeg processing for computer-aided seizure detection and epilepsy diagnosis," *Seizure*, vol. 26, pp. 56–64, 2015.
- [24] W. Qi, H. Su, C. Yang, G. Ferrigno, E. De Momi, and A. Aliverti, "A fast and robust deep convolutional neural networks for complex human activity recognition using smartphone," *Sensors*, vol. 19, no. 17, p. 3731, 2019.
- [25] A. Antoniadis, L. Spyrou, C. C. Took, and S. Sanei, "Deep learning for epileptic intracranial eeg data," in *2016 IEEE 26th International Workshop on Machine Learning for Signal Processing (MLSP)*. IEEE, 2016, pp. 1–6.
- [26] M.-P. Hosseini, H. Soltanian-Zadeh, K. Elisevich, and D. Pompili, "Cloud-based deep learning of big eeg data for epileptic seizure prediction," in *2016 IEEE global conference on signal and information processing (GlobalSIP)*. IEEE, 2016, pp. 1151–1155.
- [27] J. Birjandtalab, M. Heydarzadeh, and M. Nourani, "Automated eeg-based epileptic seizure detection using deep neural networks," in *2017 IEEE International Conference on Healthcare Informatics (ICHI)*. IEEE, 2017, pp. 552–555.
- [28] Y. Yuan, G. Xun, F. Ma, Q. Suo, H. Xue, K. Jia, and A. Zhang, "A novel channel-aware attention framework for multi-channel eeg seizure detection via multi-view deep learning," in *2018 IEEE EMBS International Conference on Biomedical & Health Informatics (BHI)*. IEEE, 2018, pp. 206–209.
- [29] K. M. Tsiouris, V. C. Pezoulas, M. Zervakis, S. Konitsiotis, D. D. Koutsouris, and D. I. Fotiadis, "A long short-term memory deep learning network for the prediction of epileptic seizures using eeg signals," *Computers in biology and medicine*, vol. 99, pp. 24–37, 2018.
- [30] Y. Hao, H. M. Khoo, N. von Ellenrieder, N. Zazubovits, and J. Gotman, "Deepied: An epileptic discharge detector for eeg-fMRI based on deep learning," *NeuroImage: Clinical*, vol. 17, pp. 962–975, 2018.
- [31] I. Ullah, M. Hussain, H. Aboalsamh et al., "An automated system for epilepsy detection using eeg brain signals based on deep learning approach," *Expert Systems with Applications*, vol. 107, pp. 61–71, 2018.
- [32] R. Hussein, H. Palangi, R. K. Ward, and Z. J. Wang, "Optimized deep neural network architecture for robust detection of epileptic seizures using eeg signals," *Clinical Neurophysiology*, vol. 130, no. 1, pp. 25–37, 2019.
- [33] M. T. Avcu, Z. Zhang, and D. W. S. Chan, "Seizure detection using least eeg channels by deep convolutional neural network," in *ICASSP 2019-2019 IEEE International Conference on Acoustics, Speech and Signal Processing (ICASSP)*. IEEE, 2019, pp. 1120–1124.
- [34] R. San-Segundo, M. Gil-Martín, L. F. D'Haro-Enríquez, and J. M. Pardo, "Classification of epileptic eeg recordings using signal transforms and convolutional neural networks," *Computers in biology and medicine*, vol. 109, pp. 148–158, 2019.
- [35] D. Lu and J. Triesch, "Residual deep convolutional neural network for eeg signal classification in epilepsy," *arXiv preprint arXiv:1903.08100*, 2019.
- [36] C. Zhou, C. Sun, Z. Liu, and F. Lau, "A c-lstm neural network for text classification," *arXiv preprint arXiv:1511.08630*, 2015.
- [37] P. Zhou, Z. Qi, S. Zheng, J. Xu, H. Bao, and B. Xu, "Text classification improved by integrating bidirectional lstm with two-dimensional max pooling," *arXiv preprint arXiv:1611.06639*, 2016.
- [38] M. F. Stollenga, W. Byeon, M. Livicki, and J. Schmidhuber, "Parallel multi-dimensional lstm, with application to fast biomedical volumetric image segmentation," in *Advances in neural information processing systems*, 2015, pp. 2998–3006.
- [39] T.-Y. Kim and S.-B. Cho, "Web traffic anomaly detection using c-lstm neural networks," *Expert Systems with Applications*, vol. 106, pp. 66–76, 2018.
- [40] R. G. Andrzejak, K. Lehnertz, F. Mormann, C. Rieke, P. David, and C. E. Elger, "Indications of nonlinear deterministic and finite-dimensional structures in time series of brain electrical activity: Dependence on recording region and brain state," *Physical Review E*, vol. 64, no. 6, p. 061907, 2001.
- [41] S. Wen, T. Huang, X. Yu, M. Z. Chen, and Z. Zeng, "Sliding-mode control of memristive chua's systems via the event-based method," *IEEE Transactions on Circuits and Systems II: Express Briefs*, vol. 64, no. 1, pp. 81–85, 2016.
- [42] Y. LeCun, L. Bottou, Y. Bengio, P. Haffner et al., "Gradient-based learning applied to document recognition," *Proceedings of the IEEE*, vol. 86, no. 11, pp. 2278–2324, 1998.
- [43] A. Severyn and A. Moschitti, "Twitter sentiment analysis with deep convolutional neural networks," in *Proceedings of the 38th International ACM SIGIR Conference on Research and Development in Information Retrieval*. ACM, 2015, pp. 959–962.
- [44] S. Xingjian, Z. Chen, H. Wang, D.-Y. Yeung, W.-K. Wong, and W.-c. Woo, "Convolutional lstm network: A machine learning approach for precipitation nowcasting," in *Advances in neural information processing systems*, 2015, pp. 802–810.
- [45] D. Pedamonti, "Comparison of non-linear activation functions for deep neural networks on mnist classification task," *arXiv preprint arXiv:1804.02763*, 2018.
- [46] D. P. Kingma and J. Ba, "Adam: A method for stochastic optimization," *arXiv preprint arXiv:1412.6980*, 2014.
- [47] G. E. Dahl, T. N. Sainath, and G. E. Hinton, "Improving deep neural networks for lvsr using rectified linear units and dropout," in *2013 IEEE international conference on acoustics, speech and signal processing*. IEEE, 2013, pp. 8609–8613.
- [48] B. Chen, W. Deng, and J. Du, "Noisy softmax: Improving the generalization ability of dcnn via postponing the early softmax saturation," in *Proceedings of the IEEE Conference on Computer Vision and Pattern Recognition*, 2017, pp. 5372–5381.
- [49] Y. Shin, S. Lee, M. Ahn, H. Cho, S. C. Jun, and H.-N. Lee, "Noise robustness analysis of sparse representation based classification method for non-stationary eeg signal classification," *Biomedical Signal Processing and Control*, vol. 21, pp. 8–18, 2015.

- [50] J. Zhang and Y. Yang, "Robustness of regularized linear classification methods in text categorization," in Proceedings of the 26th annual international ACM SIGIR conference on Research and development in informaion retrieval. ACM, 2003, pp. 190–197.
- [51] J. A. Sáez, M. Galar, J. Luengo, and F. Herrera, "Tackling the problem of classification with noisy data using multiple classifier systems: Analysis of the performance and robustness," *Information Sciences*, vol. 247, pp. 1–20, 2013.



YUAN LIU (M'09-SM'19) received the B. S. and Ph. D. degree in electrical engineering from South China University of Technology, Guangzhou, China, in 2004 and 2009, respectively. From 2011 to 2017, he was a Senior Engineer with the China Electronic Product Reliability and Environmental Testing Research Institute. Since 2018, he has been an Associate Professor with the School of Automation, Guangdong University of Technology. His research interests include machine learning, deep learning and reliability of electrical systems.



YU-XUAN HUANG received the B.E. degree from Nanyang University in 2019. She is currently pursuing the M.E. degree in control engineering with Guangdong University of Technology. Her research interests include machine learning and deep learning in electrical systems.



XUEXI ZHANG received Ph.D degree from Guangdong University of Technology in 2009. He has been associate professor since 2009, and mainly focus on the research of intelligent control and information processing technology.



WEN QI (S'19) received the M.Sc. degree in Control engineering from the South China University of Technology, Guangzhou, China, in 2015. Her first-authored paper was awarded the finalist of T J Tarn's Best Paper Award on Control Applications on IEEE WCICA 2014. Now she is pursuing a Ph.D. Degree as a member of the Laboratory of Biomedical Technologies (TBMLab) in Politecnico di Milano, Milano, Italy. Her main research interests include machine learning, deep learning and signal processing algorithms in wearable medical devices.



JING GUO (S'14-M'16) obtained his Ph.D degree from University of Montpellier, France in 2016. He received his master and bachelor degree both from Guangdong University of Technology in 2009 and 2012 respectively. He has been research fellow at National University of Singapore (NUS). His current research interests include robotic control, haptic bilateral teleoperation, and machine learning. He is now affilicate with Guangdong University of Technology.



YINGBAI HU received the M.Sc. degree in control theory and control engineering in South China University of Technology, Guangzhou, China, in 2017. Yingbai Hu was a Research Fellow in the Shenzhen Institutes of Advanced Technology Chinese Academy of Sciences from 2017-2018. He is currently working toward the Ph.D. degree in Computer Science as a member of the Informatics 6-Chair of Robotics, Artificial Intelligence and Real-time Systems in Technische Universität München, München, Germany. He participated in the EU funded project European Union's Horizon 2020 Framework Programme for Research and Innovation under the Specific Grant Agreement No. 785907 (Human Brain Project SGA2). He has served as a reviewer for over 14 scientific journals or conference, like IEEE Transaction on Neural Networks and Learning Systems, IEEE/ASME Transactions on Mechatronics, IEEE Transaction on Automation and Engineering, IEEE Transaction on Cybernetics, IEEE Transactions on Systems, Man, and Cybernetics: Systems, International Joint Conferences on Artificial Intelligence (IJCAI), etc.

He has published several papers in international conferences and journals. His main research interests include control and instrumentation in mobile robot, human-robot interaction, surgical robotics, reinforcement learning, etc..



LONGBIN ZHANG received the M.Sc. degree in Control Engineering in South China University of Technology, Guangzhou, China, in 2017. She is currently pursuing a Ph.D. degree in Department of Mechanics, KTH Royal Institute of Technology, Stockholm, Sweden, working on robotic exoskeletons for patients with motor disorder. She participated in some research projects in Sweden sponsored by Promobilia Foundation (ref nr 18200) as well as Swedish Scientific Council (2018-00750), and worked on bio-signal processing and exoskeleton control. She has served as a reviewer for over 10 scientific journals, like IEEE Transaction on Industrial Electronics, IEEE Transaction on Biomedical Engineering, IEEE Transaction on Automation and Engineering, IEEE Transaction on Cybernetics, IEEE Transactions on Systems, Man, and Cybernetics: Systems, etc.

She has published several papers in international conference and journals. Her main research interests include simulation of human movement, robotic exoskeleton assistive strategies, EMG control, optimizing and reinforcement learning control.



HANG SU (S'14-M'19) received the M.Sc. degree in control theory and control engineering in South China University of Technology, Guangzhou, China, in 2015. He obtained his PhD Degree in 2019 as a member of the Medical and Robotic Surgery group (NEARLab) in Politecnico di Milano, Milano, Italy. He participated in the EU funded project (SMARTsurg) in the field of Surgical Robotics. Dr. Hang Su is currently a Research Fellow in the Department of Electronics, Information and Bioengineering (DEIB) of Politecnico Di Milano. He is fostering an international research team constituting three PhD students and a few Masters students in the field of Medical Robotics. He has served as a reviewer for over 30 scientific journals, like IEEE Transaction on Biomedical Engineering, IEEE/ASME Transactions on Mechatronics, IEEE Transaction on Automation and Engineering, IEEE Transaction on Cybernetics, IEEE Transactions on Systems, Man, and Cybernetics: Systems, etc.. He is currently Special Session Chair of IEEE International Conference on Advanced Robotics and Mechatronics (ICARM 2020).

He has published several papers in international conferences and journals and has been awarded ICRA 2019 travel grant. His main research interests include control and instrumentation in medical robotics, human-robot interaction, surgical robotics, deep learning, bilateral teleoperation, etc..

• • •