

## Collapsing Lesions and Focal Segmental Glomerulosclerosis in Pregnancy: A Report of 3 Cases

Oralia Alejandra Orozco Guillén, Ricardo Iván Velazquez Silva, Bernardo Moguel Gonzalez, Tomas Becerra Gamba, Alfredo Gutiérrez Marín, Norberto Reyes Paredes, Jorge Arturo Cardona Pérez, Virgilia Soto Abraham, Giorgina Barbara Piccoli, and Magdalena Madero

The relationship between focal segmental glomerulosclerosis (FSGS) and pregnancy is complex and not completely elucidated. Pregnancy in patients with FSGS poses a high risk for complications, possibly due to hemodynamic factors, imbalance between angiogenic and antiangiogenic factors, and hormonal conditioning. Although poor clinical outcomes associated with collapsing FSGS are common outside of pregnancy, the prognosis during pregnancy is not well documented. We report 3 patients who developed collapsing FSGS during pregnancy, 2 of whom had presumed underlying FSGS. Two patients underwent biopsy during pregnancy, and 1, during the puerperium. None of the 3 patients improved spontaneously after delivery, and 1 experienced a rapid deterioration in kidney function and proteinuria after delivery. Aggressive immunosuppressive therapy led to a full response in 1 case (without chronic lesions) and to partial responses in the remaining 2 cases. These cases suggest that collapsing lesions should be considered in patients with FSGS who develop a rapid increase in serum creatinine level or proteinuria during pregnancy and that these lesions may at least partially respond to treatment.

Complete author and article information provided before references.

*Am J Kidney Dis.* XX(XX): 1-7. Published online Month X, XXXX.

doi: 10.1053/j.ajkd.2019.04.026

Published by Elsevier Inc. on behalf of the National Kidney Foundation, Inc. This is a US Government Work. There are no restrictions on its use. This is an open access article under the CC BY-NC-ND license (<http://creativecommons.org/licenses/by-nc-nd/4.0/>).

### Introduction

The relationship between focal segmental glomerulosclerosis (FSGS) and pregnancy-associated endotheliosis, with or without preeclampsia, is complex. Together with endotheliosis, FSGS lesions are frequently reported in patients undergoing kidney biopsy during or shortly after pregnancy.<sup>1-6</sup> Some reports suggest that FSGS lesions represent the final evolution of endotheliosis, while in others, the 2 diseases are described as distinct.<sup>1-10</sup> Conversely, pregnancy in patients with already diagnosed FSGS is known to have a higher risk for complications, including preeclampsia, preterm delivery, and increases in proteinuria.<sup>11-16</sup>

Hyperfiltration stress, which is likely to increase in pregnancy, has been identified as a potential, albeit not confirmed, risk factor for the development of an overt clinical picture of FSGS. This can be an issue in women born with very low birth weight, a population known to have a reduced nephron number and to be particularly prone to developing FSGS.<sup>17-21</sup> These studies point to the importance of hemodynamic factors, namely pregnancy-related hyperfiltration, in the pathogenesis of lesions. However, in keeping with what has been observed in patients with cancer treated with antiangiogenic drugs, it is possible that the imbalance between angiogenic and antiangiogenic factors is a contributing factor.<sup>22</sup> Regardless, a central role for podocyte damage as a common final pathway of these lesions is suggested; podocyte shedding increases during a pregnancy with preeclampsia.<sup>23,24</sup>

FSGS is a heterogeneous disease with differences in degrees of severity, evolution, and therapeutic indications. In pregnancy, the short-term prognosis in

forms secondary to hyperfiltration may be favorable, but less is known about collapsing lesions, which usually have a poor prognosis outside of pregnancy.<sup>13,15,25,26</sup>

We report 3 patients who developed collapsing lesions in pregnancy, in 2 cases presumably superimposed on pre-existing FSGS lesions (long-lasting kidney disease was suggested by ultrasonography and kidney biopsy results) and in 1 case apparently without previous pathology. These reports, observed in 2015 to 2018, suggest that the onset of collapsing lesions should be considered in patients with FSGS who have a brisk increase in serum creatinine (Scr) level or proteinuria in pregnancy, and that these lesions can respond well to treatment.

### Case Reports

#### Case 1

A 23-year-old Hispanic woman was referred because of severe proteinuria in her first pregnancy to the National Institute of Perinatology. The patient and her family said they had been unaware that she was pregnant. She had congenital hypothyroidism that was never properly corrected, resulting in a mental developmental defect. Pregnancy duration was estimated using ultrasonography as being between 16 and 18 weeks. Physical examination revealed a thin woman (height, 145 cm; weight, 52 kg [usual baseline, 45 kg], body mass index, 21.4 kg/m<sup>2</sup>) with anasarca, reported as occurring and rapidly worsening in the last 2 to 3 weeks, with otherwise unremarkable physical findings. Blood pressure was 100/60 mm Hg.

Laboratory tests at referral are reported in Table 1. Thyroid-stimulating hormone level was > 300 mIU/L, and

**Table 1.** Key Laboratory Data for Patient 1

	Baseline (other hospital; 12-14 wk gestation)	Referral (16-18 wk gestation)	Miscarriage (19-20 wk gestation)	Biopsy (3 wk after miscarriage)	Follow-up (2 y after biopsy)
Scr, mg/dL	0.36	0.87	0.75	0.55	0.44
eGFR, mL/min/1.73 m <sup>2</sup>	152	93.9	112	132	142
Serum albumin, g/dL	3.0	3.0	2.9	2.5	4
Proteinuria, g/24 h	NA	5.1	7.6	15.8	0.10
Viral markers	Hepatitis B & C, HIV: negative				
Immunologic markers	ANA and ANCA negative, C3 and C4 normal				

Note: Free thyroxine, 0.50 ng/dL; reference values, 0.58 to 1.64 ng/dL.

Abbreviations and definitions: ANA, antinuclear antibody; ANCA, antineutrophil cytoplasmic antibody; eGFR, estimated glomerular filtration rate (calculated with the Chronic Kidney Disease Epidemiology Collaboration [CKD-EPI] equation); HIV, human immunodeficiency virus; Scr, serum creatinine.

serum albumin level was 3.0 g/dL, in the presence of massive proteinuria (protein excretion >10 g/L).

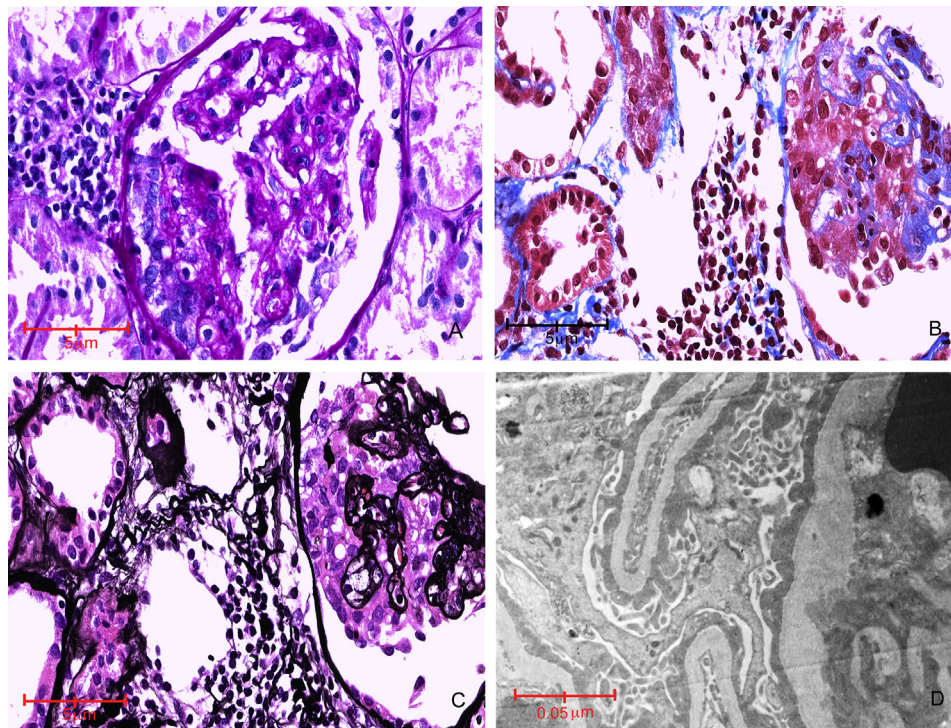
Kidney ultrasonography findings were normal. The patient was hospitalized and started on thyroid hormone replacement therapy. Due to risks associated with kidney biopsy in pregnancy, glucocorticoid treatment was initiated (3 boluses of 1 g of methylprednisolone followed by 40 mg of oral prednisone). Spontaneous fetal loss occurred 2 weeks later (male fetus weighing 269 g).

Given persistent proteinuria after 5 weeks of steroids, a kidney biopsy was performed 3 weeks after delivery, which demonstrated FSGS with collapsing lesions in 6 of

40 glomeruli without signs of chronic kidney involvement. Immunofluorescence was negative or nonspecific (Fig 1). One infusion of 375 mg/m<sup>2</sup> of rituximab was administered, attaining full remission within 1 month. At last follow-up, the patient was in good clinical condition, with a normal Scr level and protein excretion < 0.10 g/d.

### Case 2

A 27-year-old Hispanic woman in her first pregnancy was referred to the National Institute of Perinatology at 14 weeks' gestation because of hypertension and proteinuria



**Figure 1.** Case 1. Light microscopy: hypertrophic podocytes with crown disposition around collapsed segments (A: periodic acid–Schiff stain, B: Masson stain, C: Jones methenamine stain; A–C: original magnification, ×40). (C) Endothelial edema and endothelial cells with foamy morphology. Glomeruli are of normal size, and tubule interstitial structures are overall preserved. (D) Ultrastructural analysis shows diffuse podocyte effacement (original magnification, ×5,000). Immunofluorescence staining was negative or nonspecific (Fig S1; Table S1).

## Case Report

(protein excretion, 2.3 g/d). She had a history of hypertension, discovered 18 months previously. Kidney function at that time was reported to be decreased with proteinuria present, but details were unavailable. Physical examination revealed mild peripheral edema and findings were otherwise unremarkable. Blood pressure was controlled with  $\alpha$ -methyl dopa (500 mg 3 times daily).

Laboratory tests at referral and during follow-up are reported in Table 2. Ultrasonography revealed kidneys of borderline-small size (right, 9.3 × 4.5 cm; left, 9.9 × 5.2 cm) with slightly irregular margins and loss of corticomedullary differentiation. The patient's clinical condition and proteinuria remained stable until gestational week 25, when proteinuria suddenly increased to protein excretion > 20 g/d, with stable Scr level. Because of the increase in proteinuria, kidney biopsy was performed at 26 gestational weeks, which revealed FSGS with collapsing lesions, tubular atrophy and regeneration, interstitial fibrosis, and occasional inflammatory infiltrate. Mild mesangial hypercellularity was observed, but immunofluorescence was negative for immunoglobulin A (Fig 2).

The patient was treated with 3 boluses of 1 g of methylprednisolone, followed by 30 mg/d of prednisone without reduction in proteinuria. Due to worsening hypertension, nifedipine and hydralazine were added at 30 and 32 weeks of gestation, respectively. The ratio between angiogenic and antiangiogenic factors was altered, suggesting superimposed preeclampsia (placenta growth factor, 8,575 pg/mL; soluble fms-like tyrosine kinase 1, 761.1 pg/mL; ratio, 88.76; reference ratio, >38 for a diagnosis of preeclampsia<sup>27</sup>). Fetal growth was normal and uterine and umbilical ultrasonography findings were normal for gestational age.

When hypertension control became difficult despite a 3-drug therapy (nifedipine, 120 mg/d; hydralazine, 150 mg/d; and  $\alpha$ -methyl dopa, 1,500 mg/d), cesarean delivery was performed at gestational week 33, delivering a healthy male baby weighing 2.1 kg (63rd centile for gestational age). Due to the lack of clinical response in the first week after delivery (after 8 weeks of steroid treatment), the patient was administered 375 mg/m<sup>2</sup> of rituximab and subsequently treated with tacrolimus, with partial reduction in proteinuria. At last follow-up, 11

months after delivery, she is in partial remission, with normal kidney function, on treatment with tacrolimus (3 mg/d) and angiotensin-converting enzyme inhibition (Table 2).

## Case 3

During her third pregnancy, a 27-year-old Hispanic woman was referred to the National Institute of Perinatology for hypertension, diagnosed at gestational week 35, during a routine check-up. Her medical history included 1 term pregnancy with cesarean delivery, which had otherwise been uneventful, and a spontaneous miscarriage at 10 gestational weeks 1 year earlier. Hypertension developed during this pregnancy; Scr level was 1.0 mg/dL and proteinuria was detected. However, she was not advised to undergo further analysis of kidney function. Physical examination revealed a thin woman (height, 158 cm; weight, 51.8 kg) with peripheral edema and blood pressure of 140/85 mm Hg. Examination findings were otherwise unremarkable.

Laboratory tests at referral and during follow-up are reported in Table 3. Ultrasonography revealed small kidneys with poor corticomedullary differentiation. The patient was hospitalized at 36.2 gestational weeks for evaluation of her renal condition. The growth of the child was normal, Scr level had increased to 1.2 mg/dL, urinary sediment analysis revealed dysmorphic erythrocytes and granular casts, proteinuria was protein excretion of 11 g/d, and serum albumin level was 2.9 g/dL (Table 3). Fetal growth was normal, as were uterine and umbilical ultrasonographic examination findings. A cesarean delivery was performed at 36.4 weeks of gestation, delivering a healthy female baby weighing 2,590 g (41st centile for gestational age).

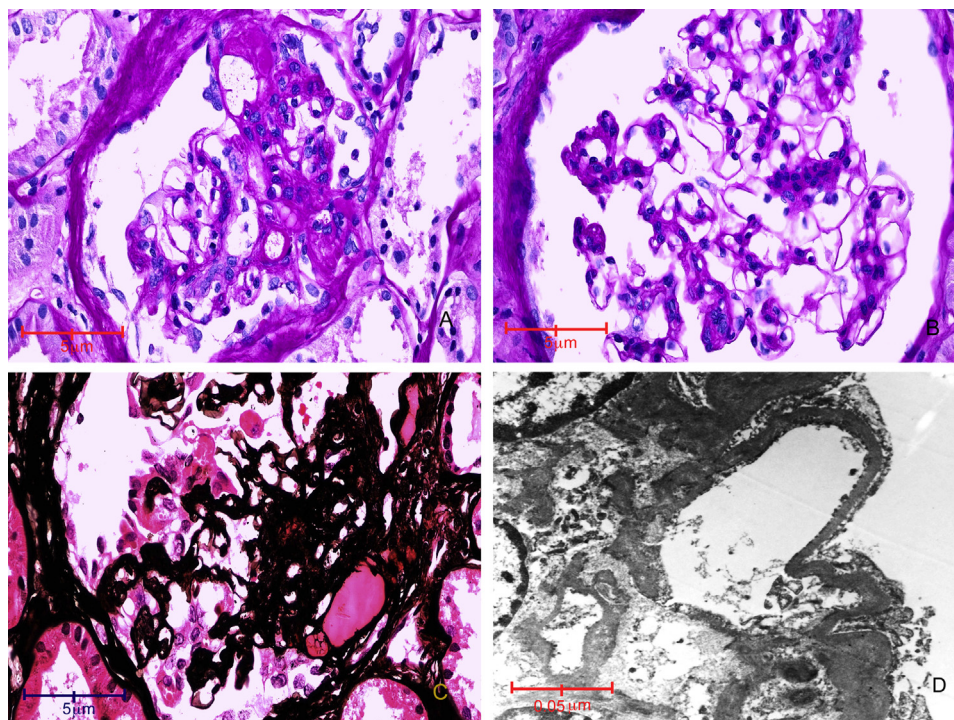
After delivery, Scr level rapidly increased to 1.8 mg/dL (day 1) and 2.1 mg/dL (day 2), and the patient was referred for kidney biopsy. On day 3 after delivery, Scr level further worsened to 5.6 mg/dL, with oliguria, and dialysis was initiated to treat hypervolemia. A rapidly progressive glomerulonephritis was suspected and while waiting for results of the kidney biopsy, the patient was treated with 3 boluses of 500 mg of methylprednisolone, plasmapheresis (3 sessions), and cyclophosphamide (1 g intravenously). The kidney biopsy showed collapsing lesions in 1 of 9

**Table 2.** Key Laboratory Data for Patient 2

	Referral (14 wk gestation)	Biopsy (26 wk gestation)	Delivery (33 wk gestation)	Follow-up (9 mo after delivery)
Scr, mg/dL	0.9	1.04	1.6	1.3
eGFR, mL/min/1.73 m <sup>2</sup>	88	73	43	58
Serum albumin, g/dL	3.8	2.13	1.6	3.6
Proteinuria, g/24 h	2.3	20	11	5.3
Viral markers	Hepatitis B & C, HIV, parvovirus B-19, CMV: negative			
Immunologic markers	ANA, ANCA, lupus-like anticoagulant, antibodies anticardiolipin IgG/IgM, rheumatoid factor: negative; C3 C4: normal			

Abbreviations and definitions: ANA, antinuclear antibody; ANCA, antineutrophil cytoplasmic antibody; CMV, cytomegalovirus; eGFR, estimated glomerular filtration rate (calculated with the Chronic Kidney Disease Epidemiology Collaboration [CKD-EPI] equation); HIV, human immunodeficiency virus; IgG, immunoglobulin G; Scr, serum creatinine.





**Figure 2.** Case 2. (A-C) Light microscopy. (A) Segmental sclerosis with capsular synechia and areas of hyalinosis; (B, C) in some fields, segmental collapse; and (C) podocyte hypertrophy is observed (A, B: periodic acid–Schiff stain, C: Masson trichrome stain; A-C: original magnification,  $\times 40$ ). (D) At electron microscopy, diffuse effacement of foot processes is observed (original magnification,  $\times 2,500$ ). Immunofluorescence staining was negative or nonspecific (Figs S2-S6; Table S1).

glomeruli, with the remaining nephrons showing glomerulomegaly, signs of focal segmental sclerosis, interstitial infiltrate, and tubular regeneration, without immune deposits (Fig 3). When biopsy results became available, she was switched to oral prednisone and tacrolimus treatment. Kidney function partially improved and at the last follow-up, 4 months after delivery, Scr level was 2.29 mg/dL and proteinuria was protein excretion of 1.55 g/d (Table 3).

## Discussion

Previously unsuspected kidney disease may be discovered during pregnancy.

The incidence of collapsing FSGS in pregnancy is not known; we were able to find only 2 such reports, with 2 other reports (4 cases) in which collapsing lesions were

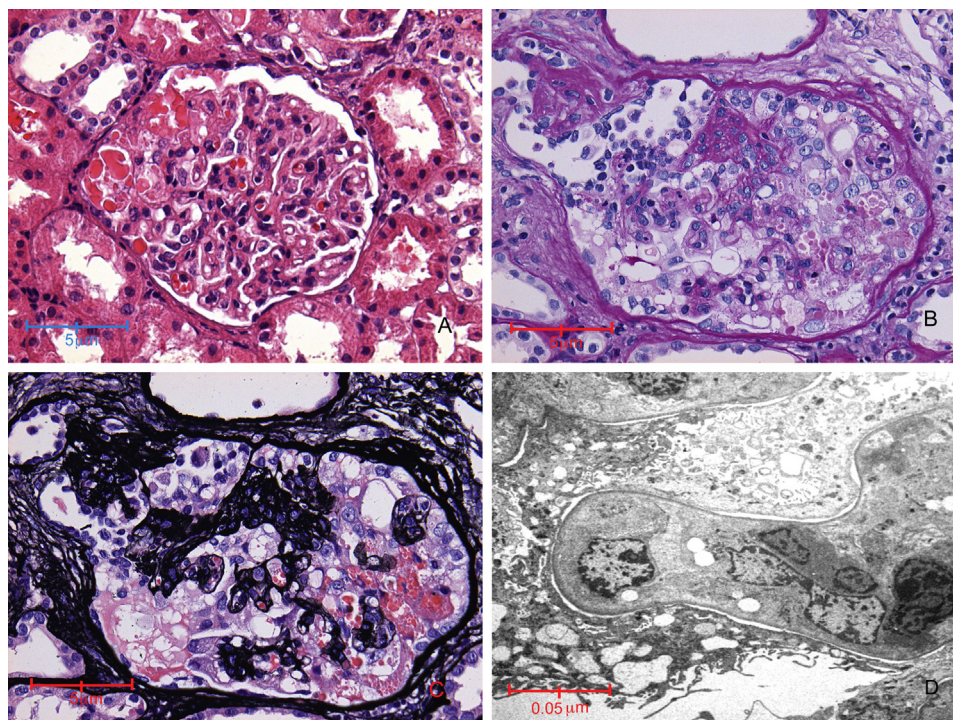
superimposed on thrombotic microangiopathy (TMA).<sup>28-31</sup> The first 2 cases were reported in the first trimester of pregnancy (6 and 8 weeks' gestation). In the first case, systemic lupus erythematosus was present, and in the second, a viral infection and genetic predisposition coexisted.<sup>28,29</sup> In the 4 additional cases, collapsing glomerulosclerosis was associated with TMA; these patients developed acute kidney injury in the postpartum period.<sup>30,31</sup> The association with TMA<sup>31-33</sup> is intriguing. TMA is frequently found in preeclampsia, and some experts consider glomerular endotheliosis a specific variant of TMA.<sup>4</sup> However, in none of our cases were lesions typical of endotheliosis found, and all responded partially or completely to immunosuppressive treatment.

**Table 3.** Key Laboratory Data for Patient 3

	Referral (35 wk gestation) <sup>a</sup>	Delivery (36.4 wk gestation)	Biopsy (3 d after delivery)	Follow-up (4 mo after biopsy)
Scr, mg/dL	1.0	1.2	5.6	2.2
eGFR, mL/min/1.73 m <sup>2</sup>	77.1	31.5	9	29.7
Serum albumin, g/dL	3.2	2.9	2.9	4.9
Viral markers	Hepatitis B & C, HIV: negative			
Immunologic markers	ANA, ANCA negative; C3 and C4 normal			

Abbreviations and definitions: ANA, antinuclear antibody; ANCA, antineutrophil cytoplasmic antibody; eGFR, estimated glomerular filtration rate (calculated with the Chronic Kidney Disease Epidemiology Collaboration [CKD-EPI] equation); HIV, human immunodeficiency virus; Scr, serum creatinine.

<sup>a</sup>Scr level was reported to be 1.0 mg/dL 1 year previously; the presence of proteinuria was reported, but no quantitative data were available.



**Figure 3.** Case 3. (A-C) Light microscopy. (A) Glomerular hypertrophy; hypertrophic podocytes show vacuolar degeneration, segmental sclerosis (hematoxylin and eosin); (B, C) global collapse (B: periodic acid–Schiff stain; C: Masson trichrome stain; A-C: original magnification,  $\times 40$ ). (D) At electron microscopy, diffuse effacement of foot processes is observed (original magnification,  $\times 2,500$ ). Immunofluorescence staining was negative or nonspecific (Figs S7 and S8; Table S1).

Our cases were not associated with known viral infections or other autoimmune diseases, although there was incomplete availability of appropriate testing. Genetic analysis was likewise not available, a situation common to limited-resource settings. In particular, APOL1 variants have been associated with increased risk for progression of different kidney diseases, as well as de novo collapsing glomerulopathy after transplantation, and their frequency is probably higher in Hispanic individuals.<sup>34–36</sup>

Collapsing lesions in pregnancy have been infrequently reported, possibly because of the rarity of kidney biopsy in this setting. A common element in our 3 cases was good response to therapy, unusual in collapsing FSGS. It is difficult to interpret this finding; the presence of at least 1 component of superimposed preeclampsia was suspected in case 2. The effect of rituximab may have been enhanced by previous glucocorticoid use in case 1. Pregnancy may have served as a trigger on a particular morphologic or clinical background, which may explain the treatment response observed after delivery.

In summary, we report 3 cases of collapsing lesions in pregnancy, 2 of which were complications of FSGS. We observed a favorable, albeit in 2 cases incomplete, response to treatment. This underlines the importance of considering this diagnosis in patients with FSGS who develop a brisk increase in Scr level or proteinuria during

pregnancy because these lesions may at least partially respond to treatment.

## Supplementary Material

### Supplementary File (PDF)

**Figure S1:** Direct immunofluorescence microscopy of kidney biopsy specimen from case 1 shows nonspecific IgG trapping.

**Figure S2:** Direct immunofluorescence microscopy of kidney biopsy specimen from case 2 shows strong IgG positivity.

**Figure S3:** Direct immunofluorescence microscopy of kidney biopsy specimen from case 2 shows negative IgA staining.

**Figure S4:** Direct immunofluorescence microscopy of kidney biopsy specimen from case 2 shows IgM deposits.

**Figure S5:** Direct immunofluorescence microscopy of kidney biopsy specimen from case 2 shows  $\kappa$  light chain positivity.

**Figure S6:** Direct immunofluorescence microscopy of kidney biopsy specimen from case 2 shows  $\lambda$  light chain positivity.

**Figure S7:** Direct immunofluorescence microscopy of kidney biopsy specimen from case 3 shows weak IgG staining.

**Figure S8:** Direct immunofluorescence microscopy of kidney biopsy specimen from case 3 shows C3c dots.

**Table S1:** Details of the kidney biopsies.

## Article Information

**Authors' Full Names and Academic Degrees:** Oralia Alejandra Orozco Guillén, MD, Ricardo Iván Velazquez Silva, MD, Bernardo



Moguel Gonzalez, MD, Tomas Becerra Gamba, MD, Alfredo Gutiérrez Marin, MD, Norberto Reyes Paredes, MD, Jorge Arturo Cardona Pérez, MD, Virgilia Soto Abraham, MD, Giorgina Barbara Piccoli, MD, and Magdalena Madero, MD.

**Authors' Affiliations:** Department of Nephrology, National Institute of Perinatology "Isidro Espinoza de los Reyes" (OAGG); Department of Nephrology, National Institute of Cardiology "Ignacio Chavez" (RIVS, BMG, TBG, MM); Departments of Critical Care (AGM), Gynaecology and Obstetrics (NRP), and Neonatologist Critical Care (JACP), National Institute of Perinatology "Isidro Espinoza de los Reyes"; Department of Pathology, National Institute of Cardiology "Ignacio Chavez," Mexico City, Mexico (VSA); Department of Clinical and Biological Sciences, University of Torino, Turin, Italy (GBP); and Néphrologie, Centre Hospitalier Le Mans, Le Mans, France (GBP).

**Address for Correspondence:** Oralia Alejandra Orozco Guillén, MD, Department of Nephrology, National Institute of Perinatology "Isidro Espinoza de los Reyes," Calle Montes Urales 800, Lomas-Virreyes, Lomas de Chapultepec IV Secc, 11000 Ciudad de México, CDMX. E-mail: [ale\\_gaba@hotmail.com](mailto:ale_gaba@hotmail.com)

**Authors' Contributions:** O.A.O.G. and R.I.V.S. contributed equally to patient management and diagnosis. V.S.A., G.B.P., and M.M. contributed equally to writing and supervision of this work.

**Support:** None.

**Financial Disclosure:** The authors declare that they have no relevant financial interests.

**Acknowledgements:** We thank Susan Finnel for careful language correction and the patients for providing permission to share their information in anonymous form.

**Peer Review:** Received February 10, 2019. Evaluated by 3 external peer reviewers, with editorial input from the Pathology Editor and an Acting Editor-in-Chief (Editorial Board Member Ron T. Gansevoort, MD, PhD). Accepted in revised form April 10, 2019. The involvement of an Acting Editor-in-Chief to handle the peer-review and decision-making processes was to comply with AJKD's procedures for potential conflicts of interest for editors, described in the Information for Authors & Journal Policies.

## References

1. Hecht JL, Ordi J, Carrilho C, et al. The pathology of eclampsia: an autopsy series. *Hypertens Pregnancy*. 2017;36(3):259-268.
2. Stillman IE, Karumanchi SA. The glomerular injury of pre-eclampsia. *J Am Soc Nephrol*. 2007;18(8):2281-2284.
3. Han L, Yang Z, Li K, et al. Antepartum or immediate postpartum renal biopsies in preeclampsia/eclampsia of pregnancy: new morphologic and clinical findings. *Int J Clin Exp Pathol*. 2014;15;7(8):5129-5143.
4. Webster P, Webster LM, Cook HT, et al. A multicenter cohort study of histologic findings and long-term outcomes of kidney disease in women who have been pregnant. *Clin J Am Soc Nephrol*. 2017;12(3):408-416.
5. Piccoli GB, Daidola G, Attini R, et al. Kidney biopsy in pregnancy: evidence for counselling? A systematic narrative review. *BJOG*. 2013;120(4):412-427.
6. Strevens H, Wide-Svensson D, Hansen A, et al. Glomerular endotheliosis in normal pregnancy and pre-eclampsia. *BJOG*. 2003;110(9):831-836.
7. Heaton JM, Turner DR. Persistent renal damage following pre-eclampsia: a renal biopsy study of 13 patients. *J Pathol*. 1985;147(2):121-126.
8. Nochy D, Heudes D, Glotz D, et al. Preeclampsia associated focal and segmental glomerulosclerosis and glomerular hypertrophy: a morphometric analysis. *Clin Nephrol*. 1994;42(1):9-17.
9. Kwiatkowski S, Kwiatkowska E, Rzepka R, Kurkiewicz V, Mikolajek-Bedner W, Torbè A. Development of a focal segmental glomerulosclerosis after pregnancy complicated by pre-eclampsia: case report and review of literature. *J Matern Fetal Neonatal Med*. 2016;29(10):1566-1569.
10. Nochy D, Gaudry C, Hinglais N, Rouchon M, Bariety J. Can focal segmental glomerulosclerosis appear in preeclampsia? *Adv Nephrol Necker Hosp*. 1986;15:71-85.
11. Oliverio AL, Zee J, Mariani LH, et al. Renal complications in pregnancy preceding glomerulonephropathy diagnosis. *Kidney Int Rep*. 2018;4(1):159-162.
12. O'Shaughnessy MM, Jobson MA, Sims K, Liberty AL, Nachman PH, Pendergraft WF. Pregnancy outcomes in patients with glomerular disease attending a single academic center in North Carolina. *Am J Nephrol*. 2017;45(5):442-451.
13. Attini R, Leone F, MonTERSINO B, et al. Pregnancy, proteinuria, plant-based supplemented diets and focal segmental glomerulosclerosis: a report on three cases and critical appraisal of the literature. *Nutrients*. 2017;9(7), pii: E770.
14. De Castro I, Easterling TR, Bansal N, Jefferson JA. Nephrotic syndrome in pregnancy poses risks with both maternal and fetal complications. *Kidney Int*. 2017;91(6):1464-1472.
15. Piccoli GB, Attini R, Cabiddu G, et al. Maternal-foetal outcomes in pregnant women with glomerulonephritides. Are all glomerulonephritides alike in pregnancy? *J Autoimmun*. 2017;79:91-98.
16. Packham DK, North RA, Fairley KF, Ihle BU, Whitworth JA, Kincaid-Smith P. Pregnancy in women with primary focal and segmental hyalinosis and sclerosis. *Clin Nephrol*. 1988;29(4):185-192.
17. Tanaka M, Iwanari S, Tsujimoto Y, et al. Pregnancy is a risk factor for secondary focal segmental glomerulosclerosis in women with a history of very low birth weight. *Intern Med*. 2017;56(12):1537-1541.
18. Hodgin JB, Rasoulpour M, Markowitz GS, D'Agati VD. Very low birth weight is a risk factor for secondary focal segmental glomerulosclerosis. *Clin J Am Soc Nephrol*. 2009;4(1):71-76.
19. South AM, Nixon PA, Chappell MC, et al. Renal function and blood pressure are altered in adolescents born preterm. *Pediatr Nephrol*. 2019;34(1):137-144.
20. Ingelfinger JR, Kalantar-Zadeh K, Schaefer F; World Kidney Day Steering Committee. Averting the legacy of kidney disease - focus on childhood. *Kidney Dis (Basel)*. 2016;2(1):46-52.
21. D'Agati V. Pathologic classification of focal segmental glomerulosclerosis. *Semin Nephrol*. 2003;23(2):117-134.
22. Jhaveri KD, Shah HH, Calderon K, Campenot ES, Radhakrishnan J. Glomerular diseases seen with cancer and chemotherapy: a narrative review. *Kidney Int*. 2013;84(1):34-44.
23. Nishizono R, Kikuchi M, Wang SQ, et al. FSGS as an adaptive response to growth-induced podocyte stress. *J Am Soc Nephrol*. 2017;28(10):2931-2945.
24. Weissgerber TL, Craici IM, Wagner SJ, Grande JP, Garovic VD. Advances in the pathophysiology of preeclampsia and related podocyte injury. *Kidney Int*. 2014;86(2):445.
25. Schwimmer JA, Markowitz GS, Valeri A, Appel GB. Collapsing glomerulopathy. *Semin Nephrol*. 2003;23(2):209-218.
26. Laurin LP, Gasim AM, Derebail VK, et al. Renal survival in patients with collapsing compared with not otherwise specified FSGS. *Clin J Am Soc Nephrol*. 2016;11(10):1752-1759.
27. Ibarra-Hernández M, Orozco-Guillén OA, de la Alcantar-Vallín ML, et al. Acute kidney injury in pregnancy and the role of underlying CKD: a point of view from México. *J Nephrol*. 2017;30(6):773-780.

## Case Report

28. Sethi P, Treece J, Onweni C. Sudden collapse in the first trimester: report of hyperacute renal failure secondary to collapsing glomerulopathy as the initial presentation of lupus. *Cureus*. 2017;9(7):e1509.
29. Besse W, Mansour S, Jatwani K, Nast CC, Brewster UC. Collapsing glomerulopathy in a young woman with APOL1 risk alleles following acute parvovirus B19 infection: a case report investigation. *BMC Nephrol*. 2016;17(1):125.
30. Gopalakrishnan N, Dhanapriya J, Padmakumar C, et al. Collapsing glomerulopathy and thrombotic microangiopathy in postpartum period: two case reports. *Indian J Nephrol*. 2018;28(2):157-159.
31. Buob D, Decambron M, Gnemmi V, et al. Collapsing glomerulopathy is common in the setting of thrombotic microangiopathy of the native kidney. *Kidney Int*. 2016;90(6):1321-1331.
32. George JN, Nester CM, McIntosh JJ. Syndromes of thrombotic microangiopathy associated with pregnancy. *Hematology Am Soc Hematol Educ Program*. 2015;2015:644-648.
33. Burwick RM, Rincon M, Beeraka SS, Gupta M, Feinberg BB. Evaluation of hemolysis as a severe feature of preeclampsia. *Hypertension*. 2018;72(2):460-465.
34. Nadkarni GN, Gignoux CR, Sorokin EP, et al. Worldwide frequencies of APOL1 renal risk variants. *N Engl J Med*. 2018;379(26):2571-2572.
35. Santoriello D, Husain SA, De Serres SA, et al. Donor APOL1 high-risk genotypes are associated with increased risk and inferior prognosis of de novo collapsing glomerulopathy in renal allografts. *Kidney Int*. 2018;94(6):1189-1198.
36. Kopp JB. Expanding the spectrum of APOL1-related renal disease: de novo collapsing glomerulopathy following kidney transplant. *Kidney Int*. 2018;94(6):1048-1050.