

Washington University School of Medicine

Digital Commons@Becker

---

2020-Current year OA Pubs

Open Access Publications

---

7-5-2023

**Early antiretroviral therapy not associated with higher cryptococcal meningitis mortality in people with human immunodeficiency virus in high-income countries: An international collaborative cohort study**

Suzanne M Ingle

Elvin Geng

et al.

Follow this and additional works at: [https://digitalcommons.wustl.edu/oa\\_4](https://digitalcommons.wustl.edu/oa_4)

 Part of the [Medicine and Health Sciences Commons](#)

**Please let us know how this document benefits you.**

---

# Early Antiretroviral Therapy Not Associated With Higher Cryptococcal Meningitis Mortality in People With Human Immunodeficiency Virus in High-Income Countries: An International Collaborative Cohort Study

Suzanne M. Ingle,<sup>1,a</sup> Jose M. Miro,<sup>2,3,a</sup> Margaret T. May,<sup>1</sup> Lauren E. Cain,<sup>4,5</sup> Christine Schwimmer,<sup>6</sup> Robert Zangerle,<sup>7</sup> Helen Sambatakou,<sup>8</sup> Charles Cazanave,<sup>9</sup> Peter Reiss,<sup>10</sup> Vanessa Brandes,<sup>11</sup> Heiner C. Bucher,<sup>12</sup> Caroline Sabin,<sup>13</sup> Francesc Vidal,<sup>14,15</sup> Niels Obel,<sup>16</sup> Amanda Mocroft,<sup>17</sup> Linda Wittkop,<sup>18</sup> Antonella d'Arminio Monforte,<sup>19</sup> Carlo Torti,<sup>20</sup> Cristina Mussini,<sup>21</sup> Hansjakob Furrer,<sup>22</sup> Deborah Konopnicki,<sup>23</sup> Ramon Teira,<sup>24</sup> Michael S. Saag,<sup>25</sup> Heidi M. Crane,<sup>26</sup> Richard D. Moore,<sup>27</sup> Jeffrey M. Jacobson,<sup>28</sup> W. Chris Mathews,<sup>29</sup> Elvin Geng,<sup>30</sup> Joseph J. Eron,<sup>31</sup> Keri N. Althoff,<sup>32</sup> Abigail Kroch,<sup>33</sup> Raynell Lang,<sup>32</sup> M. John Gill,<sup>34</sup> and Jonathan A. C. Sterne,<sup>1</sup> on behalf of ART-CC, COHERE in EuroCoord, CNICS, and NA-ACCORD

<sup>1</sup>Population Health Sciences, Bristol Medical School, University of Bristol, Bristol, United Kingdom; <sup>2</sup>Infectious Diseases Service Hospital Clinic-IDIBAPS, University of Barcelona, Barcelona, Spain; <sup>3</sup>CIBERINFEC, Instituto de Salud Carlos III, Madrid, Spain; <sup>4</sup>Department of Epidemiology, Harvard T.H. Chan School of Public Health, Boston, Massachusetts, USA; <sup>5</sup>Global Epidemiology, AbbVie, Chicago, Illinois, USA; <sup>6</sup>University of Bordeaux, INSERM, Institut Bergonié, CHU de Bordeaux, CIC-EC 1401, Bordeaux, France; <sup>7</sup>Department of Dermatology, Venerology, and Allergy, Medical University Innsbruck, Innsbruck, Austria; <sup>8</sup>2nd Department of Internal Medicine, HIV Unit, Medical School, Hippokraton General Hospital, National and Kapodistrian University of Athens, Athens, Greece; <sup>9</sup>Infectious and Tropical Diseases Department, CHU de Bordeaux, Bordeaux, France; <sup>10</sup>Stichting HIV Monitoring, Amsterdam, The Netherlands; <sup>11</sup>Department I of Internal Medicine, Division of Infectious Diseases, University of Cologne, Cologne, Germany; <sup>12</sup>Basel Institute for Clinical Epidemiology & Biostatistics, Division of Infectious Diseases & Hospital Hygiene, University Hospital Basel, Basel, Switzerland; <sup>13</sup>Centre for Clinical Research, Epidemiology, Modelling and Evaluation, Institute for Global Health, University College London, London, United Kingdom; <sup>14</sup>Infectious Diseases Unit, Hospital Universitari de Tarragona Joan XXIII, IISPV, Universitat Rovira i Virgili, Tarragona, Spain; <sup>15</sup>CIBER Enfermedades Infecciosas, Instituto de Salud Carlos III, Madrid, Spain; <sup>16</sup>Department of Infectious Diseases, Copenhagen University Hospital, Rigshospitalet, Copenhagen, Denmark; <sup>17</sup>Centre of Excellence for Health, Immunity and Infections (CHIP) and PERSIMUNE, Rigshospitalet, University of Copenhagen, Copenhagen, Denmark; <sup>18</sup>ISPED, INSERM, Bordeaux Population Health Research Center, University of Bordeaux, Bordeaux, France; <sup>19</sup>Clinic of Infectious and Tropical Diseases, Department of Health Sciences, University of Milan, San Paolo Hospital, Milan, Italy; <sup>20</sup>Department of Surgical and Medical Sciences, University "Magna Graecia", Catanzaro, Italy; <sup>21</sup>Infectious Diseases Unit, University of Modena and Reggio Emilia, Modena, Italy; <sup>22</sup>Department of Infectious Diseases, Inselspital, Bern University Hospital, University of Bern, Bern, Switzerland; <sup>23</sup>Infectious Diseases Department, Saint-Pierre University Hospital, Université Libre de Bruxelles, Brussels, Belgium; <sup>24</sup>Service of Internal Medicine, Hospital Universitario de Sierrallana, Torrelavega, Spain; <sup>25</sup>Center for AIDS Research, University of Alabama at Birmingham, Birmingham, Alabama, USA; <sup>26</sup>Division of Infectious Diseases, Department of Medicine, University of Washington, Seattle, Washington, USA; <sup>27</sup>School of Medicine, Johns Hopkins Bloomberg School of Public Health, Baltimore, Maryland, USA; <sup>28</sup>Case Western Reserve University, Cleveland, Ohio, USA; <sup>29</sup>Department of Medicine, University of California San Diego, San Diego, California, USA; <sup>30</sup>Division of Infectious Diseases, Department of Medicine and the Center for Dissemination and Implementation, Institute for Public Health, Washington University in St Louis, St Louis, Missouri, USA; <sup>31</sup>Department of Medicine, UNC School of Medicine, Chapel Hill, North Carolina, USA; <sup>32</sup>Department of Epidemiology, Johns Hopkins Bloomberg School of Public Health, Baltimore, Maryland, USA; <sup>33</sup>University of Toronto, Toronto, Ontario, Canada; and <sup>34</sup>Department of Medicine, University of Calgary, Southern Alberta HIV Clinic, Calgary, Alberta, Canada

(See the Editorial Commentary by Boulware and Jarvis on pages 74–6.)

**Background.** Randomized controlled trials (RCTs) from low- and middle-income settings suggested that early initiation of antiretroviral therapy (ART) leads to higher mortality rates among people with HIV (PWH) who present with cryptococcal meningitis (CM). There is limited information about the impact of ART timing on mortality rates in similar people in high-income settings.

**Methods.** Data on ART-naïve PWH with CM diagnosed from 1994 to 2012 from Europe/North America were pooled from the COHERE, NA-ACCORD, and CNICS HIV cohort collaborations. Follow-up was considered to span from the date of CM diagnosis to earliest of the following: death, last follow-up, or 6 months. We used marginal structural models to mimic an RCT comparing the effects of early (within 14 days of CM) and late (14–56 days after CM) ART on all-cause mortality, adjusting for potential confounders.

**Results.** Of 190 participants identified, 33 (17%) died within 6 months. At CM diagnosis, their median age (interquartile range) was 38 (33–44) years; the median CD4<sup>+</sup> T-cell count, 19/μL (10–56/μL); and median HIV viral load, 5.3 (4.9–5.6) log<sub>10</sub> copies/mL. Most participants (n = 157 [83%]) were male, and 145 (76%) started ART. Mimicking an RCT, with 190 people in each group, there were 13 deaths among participants with an early ART regimen and 20 deaths among those with a late ART regimen. The crude and adjusted hazard ratios comparing late with early ART were 1.28 (95% confidence interval, .64–2.56) and 1.40 (.66–2.95), respectively.

**Conclusions.** We found little evidence that early ART was associated with higher mortality rates among PWH presenting with CM in high-income settings, although confidence intervals were wide.

**Keywords.** HIV; cryptococcal meningitis; ART; causal inference.

Received 17 June 2022; editorial decision 16 December 2022; published online 8 March 2023

<sup>a</sup>S. M. I. and J. M. M. contributed equally to this work.

Correspondence: J. M. Miro, Infectious Diseases Service, Hospital Clinic, Villarroel, 170, 08036 Barcelona, Spain (jmmiro@ub.edu).

Clinical Infectious Diseases® 2023;77(1):64–73

© The Author(s) 2023. Published by Oxford University Press on behalf of Infectious Diseases Society of America.

This is an Open Access article distributed under the terms of the Creative Commons Attribution-NonCommercial-NoDerivs licence (<https://creativecommons.org/licenses/by-nc-nd/4.0/>), which permits non-commercial reproduction and distribution of the work, in any medium, provided the original work is not altered or transformed in any way, and that the work is properly cited. For commercial re-use, please contact [journals.permissions@oup.com](mailto:journals.permissions@oup.com) <https://doi.org/10.1093/cid/ciad122>

## INTRODUCTION

Cryptococcal meningitis (CM) is a common opportunistic infection (OI) in people with human immunodeficiency virus (HIV) (PWH) and has a high mortality rate. In 2014, there were >200 000 incident cases of CM globally among PWH, with >180 000 deaths, most in sub-Saharan Africa [1].

For antiretroviral therapy (ART)-naive patients presenting with CM, ART should be administered once antifungal treatment has started. However, there is conflicting evidence from randomized controlled trials (RCTs) on the optimal time to initiate ART. Two African RCTs concluded that early ART (within 15 days of starting OI treatment) was associated with higher mortality rates than late ART [2, 3]. A Chinese RCT [4] also showed increased mortality rates with early ART, although that study used different definitions (defining early ART as within 2–5 weeks after the start of OI treatment and late ART as  $\geq 5$  weeks after OI treatment). Conversely, the AIDS Clinical Trials Group (ACTG) A5164 trial, conducted in the United States and South Africa [5], found that early ART (within 14 days), resulted in reduced progression to AIDS and fewer deaths than late ART (after completion of OI treatment).

A post hoc analysis, restricted to participants with CM, suggested a beneficial effect of early ART, although the sample size was small. When considering other causes of meningitis, an RCT in Vietnam [6] found that early ART did not decrease the mortality rate in PWH with *Mycobacterium tuberculosis* meningitis. A 2018 Cochrane review found insufficient evidence in support of either early or late ART in PWH with CM [7]. Current World Health Organization advice states that “immediate ART initiation is not recommended for adults, adolescents and children living with HIV who have CM because of the risk of increased mortality” [8]. Because data regarding this issue in high-income settings are lacking, observational data were analyzed using marginal structural models to mimic a clinical trial of when to start ART in PWH with CM diagnosed in high-income settings.

## METHODS

Data on ART-naive (no prior ART use) PWH with CM diagnosed between 1994 and 2012 were combined from 3 collaborations of clinical HIV cohorts from Europe and North America: the Collaboration of Observational HIV Epidemiological Research Europe (COHERE) [9], the North American AIDS Cohort Collaboration on Research and Design (NA-ACCORD) [10], and the Centers for AIDS Research Network of Integrated Clinical Systems (CNICS) [11]. To avoid duplication between NA-ACCORD and CNICS, the record from NA-ACCORD was used. Participants were eligible if, at CM diagnosis, they were  $\geq 16$  years old and CD4<sup>+</sup> T-cell count and viral load (VL) measures were available. In addition, follow-up data were required after

CM diagnosis (records present regarding laboratory tests/visits/mortality; blood samples were obtained every 3 months on average across these settings). CM diagnosis was based on the 1993 Centers for Disease Control clinical case definition [12]. The outcome was all-cause mortality.

## Variables

The baseline was defined as the date of CM diagnosis. Baseline CD4<sup>+</sup> T-cell count and VL were the values closest to CM diagnosis date within a window of 3 months before and 1 week after diagnosis. Baseline CD4<sup>+</sup> T-cell counts were low, so were categorized as 0–9, 10–19, 20–49, 50–99, or  $\geq 100$  cells/ $\mu$ L. Time-updated CD4<sup>+</sup> T-cell counts were higher, and categorized as: 0–49, 50–99, 100–199, 200–349, 350–499, or  $\geq 500$  cells/ $\mu$ L. Baseline and time-updated log<sub>10</sub>VL were categorized as 0–3.99, 4–4.99 and  $\geq 5$ ; and 0–1.69, 1.70–3.99, or  $\geq 4$  copies/mL respectively. Other variables included were sex; age; probable mode of HIV acquisition (injecting drug use, sex between men, sex between men and women, or unknown); diagnosis of AIDS before baseline (excluding CM), calendar year of CM diagnosis (1994–1999, 2000–2001, 2002–2004, or 2005 and later) and location (Europe or North America). Follow-up was from CM diagnosis date to the earliest of death, last follow-up, or 6 months after diagnosis. Follow-up was censored at 6 months as an effect of ART timing beyond this was deemed unlikely.

## Mimicking an RCT

We used marginal structural models to mimic an RCT of the effect of ART timing on all-cause mortality. We compared regimen A, in which ART was started within 14 days of CM diagnosis (early ART) with regimen B, in which ART was deferred until 15–56 days after CM diagnosis (late ART). We used the 3-stage (clone, censor, weight) approach described by Cain et al [13] and Hernán [14]. First, we replicated (cloned) the data for each participant; 1 clone was assigned to each regimen. Second, data for each clone were censored if the person deviated from the regimen assigned to that clone. For example, a person starting ART on day 10 adhered to regimen A throughout follow-up, so data for the clone assigned to this regimen remained uncensored. Data for the clone assigned to regimen B was censored on day 10, when the person deviated from regimen B. Third, to avoid selection bias caused by the censoring process, the analysis used inverse probability weights, based on the cumulative probability of remaining uncensored. Because censoring was based on being treated with ART, the probability of being censored was estimated from a model for the probability of starting ART over time since CM diagnosis.

To derive weights, CD4<sup>+</sup> T-cell counts and VLs were carried forward for a maximum of 6 months in the absence of more recent measures. Inverse probability of treatment weights (IPTWs) were derived using the uncloned data and a pooled logistic regression model for starting ART. We used

multivariable fractional polynomials to allow flexibility in the functional form of time and other continuous covariates. We included all variables listed above.

Using the model described above, we predicted the probability of starting ART for each day each person was in the study, assuming that ART was continued once started. Treatment probabilities were multiplied to derive the probability of each person's observed treatment history on each day. To stabilize the IPTWs, we fitted a further pooled logistic regression model, omitting the time-updated variables. The probabilities of observed treatment history from this model were multiplied by the unstabilized weights.

#### Fitting the Marginal Structural Model

A pooled logistic regression model, weighted by the stabilized IPTWs, was used to estimate the mortality hazard ratio (HR) comparing late versus early (reference group) ART. The model was adjusted for time (day and day squared), and baseline variables. Robust standard errors allowed for clustering by participant.

#### Sensitivity Analyses

Missing baseline values for CD4<sup>+</sup> T-cell counts or VLs were imputed by modeling their trajectories from baseline to 6 months after diagnosis, for those with and those without baseline measures. Imputation used the 2-fold fully conditional specification algorithm via the 2-fold command in Stata software (version 12.1. Manufacturer StataCorp., College Station, TX) [15]; this imputes missing values at particular time points (at baseline and 2, 4 and 6 months, with a window period of ±4 weeks for

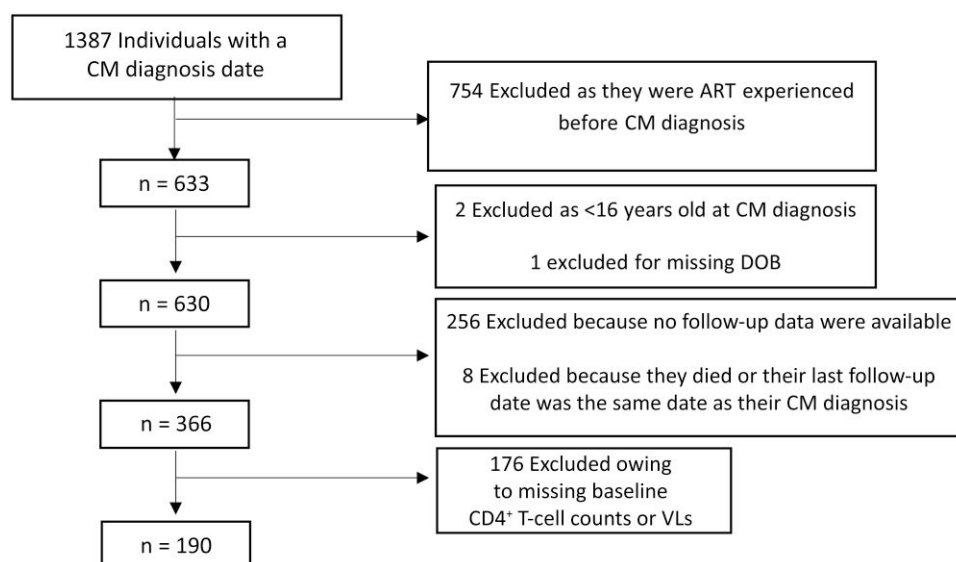
each measurement), given data available at that time point and at adjacent time points. CD4<sup>+</sup> T-cell counts were square root transformed, and VLs were log-transformed for the imputations. We fitted the model to generate IPTWs and the final marginal structural model for mortality on each of 25 imputed data sets; Rubin's rules [16] were used to combine results over data sets.

## RESULTS

Data were available from 30 cohorts across Europe and North America (Supplementary Table 1), with a majority of participants from the United States and Spain. Figure 1 shows a flow chart of PWH included in the analysis, leaving 190 participants with full covariate data. Comparing characteristics of the 190 included PWH with those excluded for reasons other than being ART experienced showed that participants in European cohorts, female participants, those who acquired HIV through sex between men and women, and those with CM diagnosed in earlier calendar periods were more likely excluded (Supplementary Table 2).

Table 1 shows characteristics of those included and compares them by ART and mortality status within 6 months after diagnosis. Most participants were male (83%) and acquired HIV through a sexual route. At CM diagnosis, the median age (interquartile range [IQR]) was 38 (33–44) years; the median CD4<sup>+</sup> T-cell count, 19/μL (10–56/μL); and the median VL, 5.3 (4.9–5.6) log<sub>10</sub> copies/mL.

Of 190 PWH, 145 (76%) started ART within 6 months of CM diagnosis; most initiated a protease inhibitor (PI)-based regimen, and the median time from CM diagnosis to ART start (IQR) was 23 (6–42) days. Thirty-three people (17%) died



**Figure 1.** Flow chart of exclusion and inclusion criteria among people with human immunodeficiency virus and a diagnosis of cryptococcal meningitis (CM). Abbreviations: ART, antiretroviral therapy; DOB, date of birth; VLs, viral loads.

**Table 1. Demographics, Clinical Characteristics, and 6-Month Outcomes in 190 Eligible People With Human Immunodeficiency Virus and Cryptococcal Meningitis**

| Characteristic  | Category                  | Participants, No. (%) <sup>a</sup> |                      |                        | Participants, No. (%) <sup>a</sup> |                      |                  | P Value          | P Value |
|---|---------------------------|------------------------------------|----------------------|------------------------|------------------------------------|----------------------|------------------|------------------|---------|
|   |                           | Overall (N = 190)                  | ART by 6 m (n = 145) | No ART by 6 m (n = 45) | Alive at 6 m (n = 157)             | Dead at 6 m (n = 33) |                  |                  |         |
| Location  | Europe                    | 114 (60.0)                         | 94 (64.8)            | 20 (44.4)              | 88 (56.1)                          | 26 (78.8)            | .02              | .02              |         |
|   | North America             | 76 (40.0)                          | 51 (35.2)            | 25 (55.6)              | 69 (43.9)                          | 7 (21.2)             |                  |                  |         |
| Sex   | Male                      | 157 (82.6)                         | 122 (84.1)           | 35 (77.8)              | 129 (82.2)                         | 28 (84.9)            | .33              | .71              |         |
|   | Female                    | 33 (17.4)                          | 23 (15.9)            | 10 (22.2)              | 28 (17.8)                          | 5 (15.2)             |                  |                  |         |
| Age, median (IQR), y  | Black                     | 38 (33–44)                         | 38 (33–43)           | 40 (34–44)             | 38 (34–43)                         | 43 (32–48)           | .70              | .02              |         |
|   | White                     | 55 (28.9)                          | 37 (25.5)            | 18 (40.0)              | 43 (27.4)                          | 12 (36.4)            | .17              | .45              |         |
|   | Other/unknown             | 55 (28.9)                          | 64 (44.1)            | 16 (35.6)              | 48 (30.6)                          | 7 (21.2)             |                  |                  |         |
| Mode of HIV acquisition   | Sex between men           | 80 (42.1)                          | 44 (30.3)            | 11 (24.4)              | 66 (42.0)                          | 14 (42.4)            | .26              | .81              |         |
|   | Injecting drug use        | 28 (14.7)                          | 20 (13.8)            | 8 (17.8)               | 24 (15.3)                          | 4 (12.1)             |                  |                  |         |
|   | Sex between men and women | 72 (37.9)                          | 51 (35.2)            | 21 (46.7)              | 60 (38.2)                          | 12 (36.4)            |                  |                  |         |
|   | Other/unknown             | 25 (13.2)                          | 19 (13.1)            | 6 (13.3)               | 19 (12.1)                          | 6 (18.2)             | .97              | .59              |         |
| Year of CM diagnosis  | 1994–1999                 | 25 (13.2)                          | 19 (13.1)            | 6 (13.3)               | 19 (12.1)                          | 6 (18.2)             |                  |                  |         |
|   | 2000–2001                 | 42 (22.1)                          | 32 (22.1)            | 10 (22.2)              | 35 (22.3)                          | 7 (21.2)             |                  |                  |         |
|   | 2002–2004                 | 67 (35.3)                          | 50 (34.5)            | 17 (37.8)              | 54 (34.4)                          | 13 (39.4)            |                  |                  |         |
|   | 2005 and beyond           | 56 (29.5)                          | 44 (30.3)            | 12 (26.7)              | 49 (31.2)                          | 7 (21.2)             |                  |                  |         |
| Previous AIDS diagnosis   | Yes                       | 78 (41.1)                          | 61 (42.1)            | 17 (37.8)              | 63 (40.1)                          | 15 (45.5)            | .61              | .57              |         |
|   | No                        | 19 (10–56)                         | 20 (10–57)           | 17 (9–38)              | 20 (10–61)                         | 15 (9–32)            | .35 <sup>b</sup> | .22 <sup>b</sup> |         |
| CD4 <sup>+</sup> T-cell count at CM diagnosis, median (IQR), cells/ $\mu$ L |                           | 5.3 (4.9–5.6)                      | 5.3 (4.9–5.6)        | 5.4 (5–5.6)            | 5.3 (4.9–5.6)                      | 5.4 (4.8–5.8)        | .44 <sup>b</sup> | .32 <sup>b</sup> |         |
| VL at CM diagnosis, median (IQR), log <sub>10</sub> copies/mL               |                           | 45 (24)                            | NA                   | NA                     | 24 (53)                            | 21 (47)              | NA               | <.01             |         |
| ART within 6 m of CM diagnosis  | No                        | 145 (76)                           | NA                   | NA                     | 133 (92)                           | 12 (8)               | NA               | NA               |         |
|   | Yes                       | 23 (6–42)                          | NA                   | NA                     | 23 (5–42)                          | 23 (12–45)           | NA               | .99 <sup>b</sup> |         |
| Time from CM diagnosis to ART, median (IQR), d                              |                           | 82 (56.6)                          | 82 (56.6)            | NA                     | 74 (57.4)                          | 8 (60.0)             | NA               | .84              |         |
| Type of ART received (n = 145)  | PI based                  | 53 (36.6)                          | 53 (36.6)            | NA                     | 46 (35.7)                          | 7 (43.8)             | NA               | NA               |         |
|   | NNRTI based               | 3 (2.1)                            | 3 (2.1)              | NA                     | 3 (2.3)                            | 0 (0)                | NA               | NA               |         |
|   | NRTIs only                | 7 (4.8)                            | 7 (4.8)              | NA                     | 6 (4.7)                            | 1 (6.3)              | NA               | NA               |         |
|   | Other                     | 15 (45.5)                          | 4 (25.0)             | 11 (64.7)              | 15 (45.5)                          | 15 (45.5)            | .055             | NA               |         |
| Causes of death (n = 33 within 6 m)   | AIDS-defining events      | 4 (12.1)                           | 2 (12.5)             | 2 (11.8)               | NA                                 | 4 (12.1)             | NA               | NA               |         |
|   | Non-AIDS-defining events  | 14 (42.4)                          | 10 (62.5)            | 4 (23.5)               | NA                                 | 14 (42.4)            | NA               | NA               |         |

Abbreviations: ART, antiretroviral therapy; CM, cryptococcal meningitis; HIV, human immunodeficiency virus; IQR, interquartile range; NA, not applicable; NNRTI, nonnucleoside reverse-transcriptase inhibitor; NRTI, nucleoside reverse-transcriptase inhibitor; PI, protease inhibitor; VL, viral load.

<sup>a</sup>Data represent no. (%) of participants unless otherwise specified.

<sup>b</sup>P values based on Wilcoxon rank-sum test.

**Table 2. Antiretroviral Therapy (ART) and Outcomes at 6 Months According to Receipt of Early or Late ART<sup>a</sup>**

| Outcome or Characteristic                               | Category                                   | Participants, No. (%) <sup>b</sup> |                       |
|---|--|------------------------------------|-----------------------|
|   |  | Early ART<br>(n = 190)             | Late ART<br>(n = 190) |
| Outcome at 6 mo   | Artificially censored <sup>c</sup>         | 126 (66.3)                         | 109 (57.3)            |
|   | Administratively censored (database close) | 51 (26.8)                          | 61 (32.1)             |
|   | Death                                      | 13 (6.8)                           | 20 (10.5)             |
| Started ART under this regimen?                         |  | 56 (29.4)                          | 68 (35.8)             |
| Time from CM diagnosis to start of ART, median (IQR), d |  | 0 (0–7)                            | 31 (23–42)            |
| Type of ART received                                    | PI based                                   | 39 (69.6)                          | 35 (51.5)             |
|   | NNRTI based                                | 14 (25.0)                          | 29 (42.7)             |
|   | NRTIs only                                 | 1 (1.8)                            | 1 (1.5)               |
|   | Other                                      | 2 (3.6)                            | 3 (4.4)               |
| Causes of death   | AIDS-defining events                       | 9 (69.2)                           | 9 (45.0)              |
|   | Non-AIDS-defining events                   | 2 (15.4)                           | 1 (5.0)               |
|   | Unknown                                    | 2 (15.4)                           | 10 (50.0)             |

Abbreviations: ART, antiretroviral therapy; CM, cryptococcal meningitis; HIV, human immunodeficiency virus; IQR, interquartile range; NNRTI, nonnucleoside reverse-transcriptase inhibitor; NRTIs, nucleoside reverse-transcriptase inhibitors; PI, protease inhibitor.

<sup>a</sup>Findings based on cloning the data for all 190 eligible people, assigning 1 clone to each trial arm, and censoring at the time people deviated from the regimen assigned to that clone.

<sup>b</sup>Data represent no. (%) of participants unless otherwise specified.

<sup>c</sup>In the early ART arm, people were censored if they did not start ART within 2 weeks. In the late ART arm, people were censored if they started ART within 2 weeks or did not start ART within 8 weeks.

within 6 months of CM diagnosis, 16 of 145 (11%) on ART and 17 of 45 (38%) not on ART; 45% of deaths were from CM or other AIDS-defining events and 42% from unspecified causes. Four people died of non-AIDS-defining causes. Characteristics of people who died within 6 months were broadly similar to those who did not, although the former group was older and more likely from European cohort studies.

Table 2 shows characteristics for each arm of the mimicked trial, in which data from all 190 participants were cloned and included in each trial arm, with follow-up censored when they deviated from that arm. Eight deaths were excluded from the mimicked trial because follow-up was censored: 4 in people who started ART after day 56 and 4 in people who died after day 56 without starting ART. Eight deaths that occurred before ART initiation and within 2 weeks of CM were included in both arms, because they occurred in individuals whose follow-up was consistent with both arms. We refer to these as “duplicated deaths.”

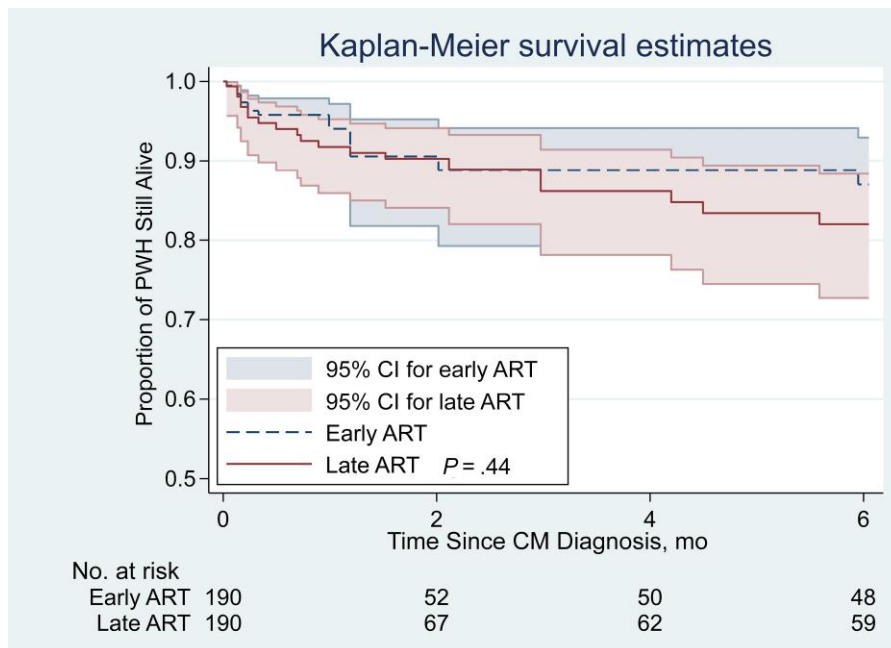
After censoring, there were 13 deaths under early ART (5 among people who started ART within 2 weeks and died by 6 months and 8 duplicated deaths) and 20 deaths under late ART (5 among people not on ART who died by day 56, 7 among people who started ART within days 15–56 but died by 6 months, and 8 duplicated deaths). In the early ART arm, after censoring, 56 participants started ART within 2 weeks of CM diagnosis, among whom most started ART immediately (median [IQR] time between diagnosis and ART initiation, 0 [0–7] days). In the late ART arm (after censoring), 68 participants started ART between 2 and 8

weeks after diagnosis. Among these, the median (IQR) time to ART initiation was 31 (23–42) days. Participants in the early ART arm were more likely to start a PI-based therapy and to die of an AIDS-defining event than those in the late ART arm. More deaths were from unknown causes in the late ART arm.

Supplementary Table 3 compares longitudinal CD4<sup>+</sup> T-cell counts and VLs among participants after imputation of missing values with those with complete data. While baseline values were similar, follow-up VLs were generally higher in the imputed data set than in the complete-case data set, suggesting that those with complete data may represent participants with less advanced HIV.

Figure 2 shows Kaplan-Meier survival estimates from mimicking an RCT by cloning and censoring the data. Survival patterns were similar for the 2 arms, with overlapping confidence intervals (CIs), although by the end of follow-up the estimated mortality incidence was slightly higher among the late ART arm. At 1 month, the estimated survival was 94% (95% CI, 88%–97%) in the early ART arm and 92% (86%–95%) in the late ART arm; the corresponding results at 6 months were 87% (77%–93%) and 82% (73%–88%), respectively.

In constructing marginal structural models, IPTWs were derived by fitting a multivariable fractional polynomials model to predict who starts ART at each time point. Model estimates are in Supplementary Table 4. Supplementary Figure 1 shows a box plot of the stabilized weights. The crude and adjusted mortality HRs comparing late with early ART were 1.28 (95% CI,



**Figure 2.** Estimated survival over time in people living with human immunodeficiency virus with cryptococcal meningitis (CM) according to whether they started antiretroviral therapy (ART) early or late, using methods that mimic a randomized controlled trial by cloning the data for each person and censoring at the time of deviation from the assigned regimen. Abbreviation: CI, confidence interval.

.64–2.56) and 1.40 (.66–2.95). Analyses using imputed data gave an attenuated adjusted mortality HR of 1.17 (95% CI, .72–1.91).

#### Comparisons With Published RCTs

Table 3 compares the present study (further details in Supplementary Table 5) with 3 RCTs on ART timing among PWH with OIs. The Zimbabwean RCT [3] found that early ART was detrimental (HR, 0.35 [95% CI, .14–.91]); mortality risks in participants treated early (<72 hours) and late (>10 weeks) were 82% and 46%, respectively. A potential limitation was that participants were treated with fluconazole, a suboptimal therapy for induction. Furthermore, definitions of early and late ART were different. The COAT (Cryptococcal Optimal ART Timing) trial [2] included PWH with CM in Uganda and South Africa who were treated with amphotericin B plus fluconazole for induction. It found results similar to those in the Zimbabwe trial (HR, 0.26 [95% CI, .09–.71]). Mortality rates in people starting ART within 1–2 weeks and in those deferring ART for 5 weeks after CM diagnosis were 47% and 33%, respectively. Most PWH who died did so within the first 2–5 weeks.

The ACTG A5164 trial [5] combined data from the United States and South Africa. It found that late ART after OI treatment is complete resulted in higher rates of progression to AIDS and death than early ART (within 15 days of starting OI treatment) (HR, 1.96 [95% CI, 1.06–3.06]). Although most

participants had *Pneumocystis pneumonia* (PCP), results of post hoc analysis suggested that the beneficial effect of early ART persisted for CM. No participants in the early ART arm died, compared with 17% in the late ART arm.

#### DISCUSSION

We found little evidence that early ART after CM was associated with higher mortality rates than late ART in ART-naïve PWH living in high-income settings. Mortality rates in this study were markedly lower than those in African RCTs. People in this study and the 3 RCTs were young; the median ages ranged from 35 to 43 years. Women represented 48% of participants in African RCTs but only 16% in our study and the ACTG trial. There is evidence that women with HIV experience higher mortality rates with CM [17] which may partly explain differences in these rates across settings. All African patients reported HIV acquisition through heterosexual routes, whereas in our study 34% of HIV acquisition was through sex between men.

Access to healthcare and severity of CM may be relevant to the effect of early ART. In Africa, contact with healthcare tends to occur later, when CM is more severe with higher deterioration in consciousness and higher fungal load in the central nervous system. These factors, together with the lack of cells in cerebrospinal fluid (CSF), are associated with worse prognosis [6, 18]. Our study did not benefit from clinical or laboratory

**Table 3. Comparison of Present Study With Previously Published Randomized Controlled Trials of When to Start Antiretroviral Therapy in People with Human Immunodeficiency Virus and Cryptococcal Meningitis**

| Characteristic  | Category                  | Participants, No. <sup>a</sup>                  |                   |  |                   |                                      |                   |   |                   |              |  |
|---|---------------------------|---|-------------------|--|-------------------|--------------------------------------|-------------------|---|-------------------|--------------|--|
|   |                           | Present Study (Europe/North America)            |                   | ACTG A5164 Trial (US/South Africa)                       |                   | COAT Trial (Uganda/South Africa)     |                   | 2010–2012                                     |                   | 2006–2009    |  |
| Study period  |                           | 1998–2009                                       |                   | 2003–2006  |                   | 2010–2012                            |                   | 2010–2012                                     |                   | 2006–2009    |  |
| Antifungal therapy  |                           | IDSA based                                      |                   | IDSA based   |                   | Amphotericin B + fluconazole         |                   | Fluconazole                                   |                   | Fluconazole  |  |
| ART timing  |                           | Early (n = 56)                                  | Deferred (n = 68) | Early (n = 13)   | Deferred (n = 23) | Early (n = 88)                       | Deferred (n = 89) | Early (n = 28)                                | Deferred (n = 26) |              |  |
| Sex   | Male                      | 43  | 58                | 12   | 21                | 46                                   | 47                | 14  | 14                |              |  |
|   | Female                    | 13  | 10                | 1  | 2                 | 42                                   | 42                | 14  | 12                |              |  |
| Age, median (IQR), y  |                           | 38 (34–45)                                      |                   | 42 (34–43)   |                   | 35 (28–40)                           |                   | 37 (8.5*)                                     |                   | 37.5 (6.9*)  |  |
| Race  | White                     | 15  | 23                | 5  | 1                 | 0                                    | 0                 | 0   | 0                 |              |  |
|   | Black                     | 14  | 17                | 2  | 11                | 88                                   | 89                | 28  | 26                |              |  |
|   | Other/unknown             | 27  | 28                | 6  | 11                | 0                                    | 0                 | 0   | 0                 |              |  |
| Mode of HIV acquisition   | Sex between men           | 15  | 27                | NA   | NA                | 0                                    | 0                 | 0   | 0                 |              |  |
|   | Sex between men and women | 21  | 26                | NA   | NA                | 88                                   | 89                | 28  | 26                |              |  |
|   | Injecting drug use        | 9   | 7                 | NA   | NA                | 0                                    | 0                 | 0   | 0                 |              |  |
|   | Other/unknown             | 11  | 8                 | NA   | NA                | 0                                    | 0                 | 0   | 0                 |              |  |
| Previous AIDS diagnosis   |                           | 20  | 31                | NA   | NA                | 7                                    | 7                 | NA  | NA                |              |  |
| CD4 <sup>+</sup> T-cell count, median (IQR), cells/ $\mu$ L       |                           | 20 (10–56)                                      |                   | 23 (11–63)   |                   | 19 (9–69)                            |                   | 27 (17–69)                                    |                   | 51.5 (25–69) |  |
| VL, median (IQR), log <sub>10</sub> copies/mL                     |                           | 5.4 (4.9–5.7)                                   |                   | 5.2 (4.8–5.5)  |                   | 5.5 (5.2–5.8)                        |                   | 4.97 (.61*)                                   |                   | 5.21 (.37*)  |  |
| Interval between CM diagnosis and ART initiation, median (IQR), d |                           | 0 (0–7)   |                   | 31 (23–42)   |                   | 7 (6–7)                              |                   | ≤3 d  |                   | >70 d        |  |
| Type of ART   | PI based                  | 39  | 35                | 13   | 16                | 0                                    | 0                 | 0   | 0                 |              |  |
|   | NNRTI based               | 14  | 29                | 0  | 3                 | 88                                   | 89                | 28  | 26                |              |  |
|   | NRTI based                | 1   | 1                 | 0  | 0                 | 0                                    | 0                 | 0   | 0                 |              |  |
|   | Other/unknown             | 2   | 3                 | 0  | 0                 | 0                                    | 0                 | 0   | 0                 |              |  |
|   | Did not start             | 0   | 0                 | 0  | 4                 | 0                                    | 0                 | 0   | 0                 |              |  |
| Death   | Overall                   | 5   | 7                 | 0  | 4                 | 41                                   | 29                | 23  | 12                |              |  |
|   | At 4 wk                   | 0   | 0                 | 0  | 3                 | 33                                   | 17                | 10 <sup>b</sup>                               | 7 <sup>b</sup>    |              |  |
|   | At 6 m                    | 5   | 7                 | 0 <sup>b</sup>   | 1                 | 8                                    | 12                | NA  | NA                |              |  |
| Effect measure (deferred vs early ART [reference group])          |                           | Adjusted mortality HR, 1.39 (95% CI, .66–2.94). |                   | OR for AIDS progression/deaths, 1.96 (95% CI, 1.06–3.70) |                   | Mortality HR, 0.26 (95% CI, .09–.71) |                   | Adjusted mortality HR, 0.35 (95% CI, .14–.91) |                   |              |  |
| Causes of death   | CM                        | 0   | 0                 | 0  | 2                 | 19                                   | 10                | 19  | 10                |              |  |
|   | Other AIDS-defining event | 2   | 0                 | 0  | 1                 | 4                                    | 6                 | 1   | 1                 |              |  |
|   | Non-AIDS-defining event   | 2   | 0                 | 1  | 1                 | 16                                   | 10                | 10  | 3                 |              |  |
|   | Unknown                   | 1   | 7                 | 0  | 0                 | 2                                    | 3                 |   |                   |              |  |

Abbreviations: ACTG, AIDS Clinical Trials Group; ART, antiretroviral therapy; CI, confidence interval; CM, cryptococcal meningitis; COAT, Cryptococcal Optimal ART Timing; HIV, human immunodeficiency virus; HR, hazard ratio; IDSA, Infectious Disease Society of America; IQR, interquartile range; NA, not available; NNRTI, nonnucleoside reverse-transcriptase inhibitor; NRTI, nucleoside reverse-transcriptase inhibitor; OR, odds ratio; PI, protease inhibitor; VL, viral load.

<sup>a</sup>Standard deviations around a mean value.

<sup>b</sup>Data represent no. of participants unless otherwise specified.

<sup>c</sup><2 Weeks.



data, but we know levels of immunosuppression and plasma HIV VL at diagnosis were similar in all 4 studies. The number of CD4<sup>+</sup> lymphocytes is inversely proportional to CSF fungal load [19], especially when the CD4<sup>+</sup> T-cell count was >100/μL. However, the median CD4<sup>+</sup> lymphocyte count in these studies ranged from 19/μL to 51/μL. The plasma HIV VL was about 100 000 copies/mL, implying that participants had advanced HIV disease.

The type of antifungal treatment administered is a likely explanation for mortality rate differences between studies. Since the 1990s, amphotericin B has been the treatment of choice for AIDS-associated CM in the United States, Europe, and other developed settings, and flucytosine has been added during the first 2 weeks whenever there were no contraindications, especially since 2000 [20]. This combination is fungicidal and superior in terms of mortality risk to amphotericin B monotherapy, combined amphotericin B and fluconazole, combined fluconazole and flucytosine, and fluconazole monotherapy [21, 22]. RCTs in high-income settings with amphotericin B and flucytosine induction at 10 weeks had a 9% mortality rate [23], similar to our study. In Africa and other low-income settings with no access to these 2 essential drugs [24], the fungistatic fluconazole was used at induction. Two RCTs in low-income settings [21, 22] compared 10-week mortality across different treatment groups: amphotericin B and flucytosine (30%), fluconazole and flucytosine (35%), amphotericin B and fluconazole (33%), and amphotericin B monotherapy (44%). The Zimbabwean RCT [3] used fluconazole as monotherapy, which may explain the high mortality rate. The COAT trial [2] used amphotericin B and fluconazole at induction and had a mortality rate similar to rates in the 2 African RCTs [21, 22].

Other potential explanations for the mortality rate difference include nonsystematic use of lumbar puncture to reduce intracranial hypertension. This intervention, which reduces mortality rates [25], was practiced only in the COAT trial [2]. Second, immune reconstitution inflammatory syndrome (IRIS) is associated with early ART in high-risk people (low CD4<sup>+</sup> T-cell counts, high plasma HIV VLs, high CSF fungal inoculum). Up to 50% of people with CM who start ART early (within <2 weeks) develop paradoxical IRIS, which can worsen the prognosis [26]. The most important predictor of not developing CM-IRIS is a negative CSF culture for *Cryptococcus neoformans* at the start of ART. A South African study showed that the rate of CM-IRIS was reduced by 60% in people with negative CSF culture at ART initiation [27]. Therefore, the CM-IRIS risk is lower in people receiving induction treatment with 2 antifungals. Several studies have shown that the probability of inducing negative CSF culture in the first 2 weeks is higher with combination of amphotericin B and flucytosine [21, 22]. In African studies [5, 6] the most important cause of death was CM itself, whereas CM as a cause of death was rare in high-income settings [7], supporting use of this combination of antifungals.

A third possible explanation is that the type of ART differed across settings. In Africa, people received only ART based on efavirenz or nevirapine, whereas our study and the ACTG trial predominantly used PIs. Although these ART regimens do not influence the risk of IRIS [28], HIV PIs can inhibit in vitro the production of virulence factors of *C. neoformans* and therefore might improve the CM prognosis [29].

Two other relevant factors are subtypes of *C. neoformans* and antifungal resistance. A study sequencing isolates of *C. neoformans* from PWH in Asia and Africa showed an expansion of 3 subclades of the *C. neoformans* VN1a lineage: VN1a-4, VN1a-5, and VN1a-93 [30]. VN1a-93 was most common in Uganda and Malawi and was associated with better prognosis than VN1a-4 and VN1a-5 subclades, which predominated in Southeast Asia. It is unknown which subclades predominate in high-income settings, but the fact that in Africa a subclade with better prognosis predominates does not explain the worse prognosis observed in CM. There is scant data on antifungal resistance in Africa. A Ugandan study [31] showed no resistance to amphotericin B but a loss of sensitivity to fluconazole over time, with 31% of isolates in later years having a fluconazole MIC ≥16/mL.

The current study had certain strengths and limitations. Our sample, while a selected sample of the total population, is representative of PWH in care in high-income settings, whereas current guidelines are based on low-income settings. The main reason for exclusion from analyses was that follow-up data were not available for 256 of 630 potentially eligible PWH. We used statistical methods that mimic a trial using observational data and should avoid biases such as immortal time or lead-time bias. A similar approach was used in observational data from Latin America [32], which similarly found no evidence of a detrimental effect of early ART (<2 weeks).

Although we adjusted for potential confounding factors, unmeasured confounding is always possible in observational studies. We had no information on clinical characteristics (eg, severity of disease or Glasgow coma score), antifungal treatment, intracranial pressure monitoring, use of steroids (the negative impact of steroids emerged only after the trial from Vietnam [6]), reasons for timing of ART initiation other than those accounted for in our analyses, or monitoring of CM progression. The age of our data may be an issue, though antifungal therapy has not changed in 3 decades. Although we collated data from large collaborations, the sample size was small. In conclusion, we did not find evidence that early ART within 2 weeks of CM diagnosis led to higher mortality rates among PWH presenting with CM in high-income settings.

#### Supplementary Data

Supplementary materials are available at *Clinical Infectious Diseases* online. Consisting of data provided by the authors to benefit the reader, the posted materials are not copyedited and are the sole responsibility of the authors, so questions or comments should be addressed to the corresponding author.

## Notes

**Author contributions.** J. M. M., M. T. M., H. F., and J. A. C. S. conceived and designed the study. S. M. I. combined, checked, cleaned, and verified the data sets. All authors contributed to derivation, cleaning, and provision of cohort data. S. M. I. performed all statistical analyses (with guidance from M. T. M., L. E. C., and J. A. C. S.). S. M. I. and J. M. M. wrote the original draft of the manuscript. All authors interpreted the data and critically revised the manuscript for important intellectual content. S. M. I. and M. T. M. accessed and verified the combined data set. The individual cohort representatives could access the data from their own cohort.

**Acknowledgments.** Thanks to William Powderly, MD, from the Division of Infectious Diseases, Washington University in St Louis, St Louis, Missouri, for managing and providing the data of patients with cryptococcal meningitis from the AIDS Clinical Trials Group (ACTG) A5164 clinical trial, and to David Boulware, MD, MPH from the University of Minnesota, Minneapolis, for providing the data on patients with cryptococcal meningitis from the COAT (Cryptococcal Optimal ART Timing) clinical trial. The Antiretroviral Therapy Cohort Collaboration (ART-CC) thanks all patients and clinical teams associated with the participating cohort studies.

**Data sharing.** Owing to the data sharing agreements between individual cohorts and the collaborations (ART-CC, COHERE, NA-ACCORD, and CNICS), the data collected for this study cannot be shared. Data are owned by the individual cohorts, and those wishing to access these data should contact the individual cohorts.

**Disclaimer.** The study funders had no role in study design, data collection, data analysis, data interpretation, or writing of the report.

**Financial support.** This work was supported by the UK Medical Research Council (S. M. I. and M. T. M.); the National Institutes of Health (L. E. C., H. M. C., R. D. M., J. J. E., M. J. G., J. A. C. S., and K. N. A.); the National Institute on Alcohol Abuse and Alcoholism (S. M. I. and M. T. M.); the University of Bristol (funding to R. T. for data extraction); ART-CC (international cohort; support to M. S. S.); Institut d'Investigacions Biomèdiques August Pi i Sunyer (IDIBAPS; personal 80:20 research grant to J. M. M.); Programa de Intensificación de Investigadores (INT20/00031)-ISCIII (support to F. V.); the National Institute for Health and Care Research (Senior Investigator award (NF-SI-0611-10168 to J. A. C. S.)).

The Antiretroviral Therapy Cohort Collaboration (ART-CC) is supported by the US National Institute on Alcohol Abuse and Alcoholism (grant U01-AA026209) and the UK Medical Research Council. The Centers for AIDS Research Network of Integrated Clinical Systems (CNICS) is a National Institutes of Health–funded program (grant R24 AI067039) made possible by the National Institute of Allergy and Infectious Diseases. The Center for AIDS Research sites involved in CNICS include the University of Alabama at Birmingham (grant P30 AI027767), University of Washington (grant P30 AI027757), the University of California San Diego (grant P30 AI036214), University of California San Francisco (grant P30 AI027763), Case Western Reserve University (grant P30 AI036219), Johns Hopkins University (grants P30 AI094189 and U01 DA036935), Fenway Health/Harvard (grant P30 AI060354), University of North Carolina Chapel Hill (grant P30 AI50410), Vanderbilt University (grant P30 AI110527), and University of Miami (grant P30 AI073961). The North American AIDS Cohort Collaboration on Research and Design (NA-ACCORD) was supported by the National Institutes of Health (grants U01AI069918, F31AI124794, F31DA037788, G12MD007583, K01AI093197, K01AI131895, K23EY013707, K24AI065298, K24AI118591, K24DA000432, KL2TR000421, N01CP01004, N02CP055504, N02CP91027, P30AI027757, P30AI027763, P30AI027767, P30AI036219, P30AI050409, P30AI050410, P30AI094189, P30AI110527, P30MH62246, R01AA016893, R01DA011602, R01DA012568, R01 AG053100, R24AI067039, U01AA013566, U01AA020790, U01AI038855, U01AI038858, U01AI068634, U01AI068636, U01AI069432, U01AI069434, U01DA03629, U01DA036935, U10EY008057, U10EY008052, U10EY008067, U01HL146192, U01HL146193, U01HL146194, U01HL146201, U01HL146202, U01HL146203, U01HL146204, U01HL146205, U01HL146208, U01HL146240, U01HL146241, U01HL146242, U01HL146245, U01HL146333, U24AA020794, U54MD

007587, UL1RR024131, UL1TR000004, UL1TR000083, Z01CP010214, and Z01CP010176; the US Centers for Disease Control and Prevention (contracts CDC-200-2006-18797 and CDC-200-2015-63931); the US Agency for Healthcare Research and Quality (contract 90047713); the US Health Resources and Services Administration (contract 90051652); the Canadian Institutes of Health Research (grants CBR-86906, CBR-94036, HCP-97105, and TGF-96118); the Ontario Ministry of Health and Long Term Care; and the Government of Alberta, Canada. Additional support was provided by the National Institute of Allergy and Infectious Diseases, National Cancer Institute, National Heart, Lung, and Blood Institute, Eunice Kennedy Shriver National Institute of Child Health and Human Development, National Human Genome Research Institute, National Institute for Mental Health, National Institute on Drug Abuse, National Institute on Aging, National Institute of Dental and Craniofacial Research, National Institute of Neurological Disorders and Stroke, National Institute of Nursing Research, National Institute on Alcohol Abuse and Alcoholism, National Institute on Deafness and Other Communication Disorders, and National Institute of Diabetes and Digestive and Kidney Diseases. The Collaboration of Observational HIV Epidemiological Research Europe (COHERE) study group has received unrestricted funding from the Agence Nationale de Recherches sur le SIDA et les Hépatites Virales (ANRS), France; the HIV Monitoring Foundation, the Netherlands; and the Augustinus Foundation, Denmark. The research leading to these results has received funding from the European Union Seventh Framework Programme (FP7/2007-2013; under EuroCoord grant agreement 260694P).

**Potential conflicts of interest.** J. M. M. has received consulting honoraria and/or research grants from AbbVie, Angelini, Contrafact, Cubist, Genentech, Gilead Sciences, Jansen, Medtronic, MSD, Novartis, Pfizer, and ViiV Healthcare, outside the submitted work, as well as consulting fees from Lysovant. L. E. C. has stock or stock options and is an employee of AbbVie. C. Sabin reports payment or honoraria for lectures, presentations, speakers, bureaus, manuscript writing, or educational events from Gilead Sciences and ViiV Healthcare (payments to the author for preparation of educational materials); participation on a data and safety monitoring board (DSMB) or advisory board for Gilead Sciences and ViiV Healthcare (paid to the author); and service as vice chair of the British HIV Association. H. S. reports consulting fees from ViiV and MSD and payment or honoraria for lectures, presentations, speakers, bureaus, manuscript writing or educational events from MSD, ViiV, and Gilead. P. R., through his institution, has received independent scientific grant support from Gilead Sciences, Janssen Pharmaceuticals, Merck, and ViiV Healthcare and has served on scientific advisory boards for Gilead Sciences, ViiV Healthcare, and Merck, honoraria for which were all paid to his institution (all support outside the submitted work). V. B. reports support for attending meetings and/or travel from Gilead and Janssen and has stock or stock options in DWS Biotech LC Fond (private self-investment; no payments to author or institution received from any third party). F. V. received research or teaching grants from Gilead Sciences, ViiV Healthcare, and MSD, unrelated to the submitted work. N. O. reports grants or contracts from Simonsens Fond (paid to the institution). A. M. reports travel support, lecture fees, honorarium and consultancy fees from ViiV, Gilead, Eiland, and Bonnin, all outside the submitted work. L. W. reports grants or contracts from ANRS MIE. R. T. reports a research grant from Gilead Science; payment or honoraria for lectures, presentations, speakers, bureaus, manuscript writing, or educational events from Gilead Science (payment for lectures), Janssen (payment for lectures), and ViiV Healthcare (payment for lectures); support for travel from Gilead Science and Janssen; and participation on an advisory board for Gilead Science. A. D. M. reports consulting fees from ViiV, Gilead, and Janssen (paid to the author); payment or honoraria for lectures, presentations, speakers, bureaus, manuscript writing or educational events from Gilead and ViiV (paid to the author); and participation on a DSMB or advisory board for Janssen, Gilead, and ViiV (payment to the author). C. M. reports research grant from Gilead; payment or honoraria for lectures, presentations, speakers, bureaus, manuscript writing, or educational events from ViiV and Gilead; and participation on a DSMB or advisory

board for Corimuno, Gilead, ViiV, Janssen, and MSD. H. F.'s institution received educational grants from AbbVie, ViiV, Gilead, MSD, Sandoz, and Pfizer, all outside the submitted work. M. S. S. reports research grants from Gilead Sciences and ViiV Healthcare (paid to the institution); payment or honoraria for lectures, presentations, speakers, bureaus, manuscript writing; or educational events from IAS-USA (not-for-profit organization); serving on the DSMB for the I-Spy COVID trial; and serving as board chair for IAS-USA. H. M. C. reports grants or contracts from the National Institutes of Health (NIH), the Agency for Healthcare Research and Quality, and ViiV (paid to institution); consulting fees from ViiV (pending); and participation on the Office of AIDS Research Scientific Advisory Board. J. J. E. reports grants or contracts from ViiV Healthcare, Gilead Sciences, and Janssen; consulting fees from Merck, ViiV Healthcare, Gilead Science, and Janssen; and leadership or fiduciary roles in other boards, societies, committees, or advocacy groups for the IAS-USA antiretroviral therapy guidelines committee. K. N. A. reports grants or contracts from the NIH (paid to institution), royalties or licenses from Coursera, consulting fees from the NIH (for the All of US Study), and payment or honoraria for lectures, presentations, speakers, bureaus, manuscript writing, or educational events for DC HIV Cohort (author served on the DC HIV Cohort's external advisory board). M. J. G. reports consulting fees from Merck, Gilead, and ViiV (with occasional honoraria for ad hoc membership on human immunodeficiency virus advisory boards). H. C. B., in the 36 months before the submission of the current manuscript, has received grants, support for traveling, consultancy fees, and honoraria from Gilead, BMS, ViiV Healthcare, Roche, and Pfizer, unrelated to the current work. He served as the president of the Association Contre le HIV et Autres Infections Transmissibles until June 2022; in this function he received support for the Swiss HIV Cohort Study from ViiV Healthcare, Gilead, BMS, and MSD. All other authors report no potential conflicts. All authors have submitted the ICMJE Form for Disclosure of Potential Conflicts of Interest. Conflicts that the editors consider relevant to the content of the manuscript have been disclosed.

## References

- Rajasingham R, Smith RM, Park BJ, et al. Global burden of disease of HIV-associated cryptococcal meningitis: an updated analysis. *Lancet Infect Dis* **2017**; 17:873–81.
- Boulware DR, Meya DB, Muzoora C, et al. Timing of antiretroviral therapy after diagnosis of cryptococcal meningitis. *N Engl J Med* **2014**; 370:2487–98.
- Makadzange AT, Ndhlovu CE, Takarinda K, et al. Early versus delayed initiation of antiretroviral therapy for concurrent HIV infection and cryptococcal meningitis in sub-Saharan Africa. *Clin Infect Dis* **2010**; 50:1532–8.
- Zhao T, Xu XL, Lu YQ, et al. The effect of early vs. deferred antiretroviral therapy initiation in HIV-infected patients with cryptococcal meningitis: a multicenter prospective randomized controlled analysis in China. *Front Med (Lausanne)* **2021**; 8:779181.
- Zolopa A, Andersen J, Powderly W, et al. Early antiretroviral therapy reduces AIDS progression/death in individuals with acute opportunistic infections: a multicenter randomized strategy trial. *PLoS One* **2009**; 4:e5575.
- Torok ME, Yen NT, Chau TT, et al. Timing of initiation of antiretroviral therapy in human immunodeficiency virus (HIV)-associated tuberculous meningitis. *Clin Infect Dis* **2011**; 52:1374–83.
- Eshun-Wilson I, Okwen MP, Richardson M, Bicanic T. Early versus delayed antiretroviral treatment in HIV-positive people with cryptococcal meningitis. *Cochrane Database Syst Rev* **2018**; 7:CD009012.
- World Health Organization. Guidelines for the diagnosis, prevention and management of cryptococcal disease in HIV-infected adults, adolescents and children: supplement to the 2016 consolidated guidelines on the use of antiretroviral drugs for treating and preventing HIV infection. Geneva, Switzerland: World Health Organization, 2018.
- Chene G, Phillips A, Costagliola D, et al. Cohort profile: Collaboration of Observational HIV Epidemiological Research Europe (COHERE) in EuroCoord. *Int J Epidemiol* **2017**; 46:797.
- Gange SJ, Kitahata MM, Saag MS, et al. Cohort profile: the North American AIDS Cohort Collaboration on Research and Design (NA-ACCORD). *Int J Epidemiol* **2007**; 36:294–301.
- Kitahata MM, Rodriguez B, Haubrich R, et al. Cohort profile: the Centers for AIDS Research Network of Integrated Clinical Systems. *Int J Epidemiol* **2008**; 37:948–55.
- Centers for Disease Control and Prevention. 1993 revised classification system for HIV infection and expanded surveillance case definition for AIDS among adolescents and adults. *MMWR Recomm Rep* **1992**; 41:1–19.
- Cain LE, Robins JM, Lanoy E, Logan R, Costagliola D, Hernán MA. When to start treatment? A systematic approach to the comparison of dynamic regimes using observational data. *Int J Biostat* **2010**; 6:18.
- Hernán MA. How to estimate the effect of treatment duration on survival outcomes using observational data. *BMJ* **2018**; 360:k182.
- Welch CA, Petersen I, Bartlett JW, et al. Evaluation of two-fold fully conditional specification multiple imputation for longitudinal electronic health record data. *Stat Med* **2014**; 33:3725–37.
- Rubin D. Multiple imputation for nonresponse in surveys. New York: Wiley, **1987**.
- Stadelman AM, Ssebambulidde K, Tugume L, et al. Impact of biological sex on cryptococcal meningitis mortality in Uganda and South Africa. *Med Mycol* **2021**; 59:712–9.
- Hakyemez IN, Erdem H, Beraud G, et al. Prediction of unfavorable outcomes in cryptococcal meningitis: results of the multicenter Infectious Diseases International Research Initiative (ID-IRI) cryptococcal meningitis study. *Eur J Clin Microbiol Infect Dis* **2018**; 37:1231–40.
- Tugume L, Rhein J, Hullsiek KH, et al. HIV-associated cryptococcal meningitis occurring at relatively higher CD4 counts. *J Infect Dis* **2019**; 219:877–83.
- Saag MS, Graybill RJ, Larsen RA, et al. Practice guidelines for the management of cryptococcal disease. *Clin Infect Dis* **2000**; 30:710–8.
- Molloy SF, Kanyama C, Heyderman RS, et al. Antifungal combinations for treatment of cryptococcal meningitis in Africa. *N Engl J Med* **2018**; 378:1004–17.
- Day JN, Chau TTH, Wolbers M, et al. Combination antifungal therapy for cryptococcal meningitis. *N Engl J Med* **2013**; 368:1291–302.
- van der Horst CM, Saag MS, Cloud GA, et al; National Institute of Allergy and Infectious Diseases Mycoses Study Group and AIDS Clinical Trials Group. Treatment of cryptococcal meningitis associated with the acquired immunodeficiency syndrome. *N Engl J Med* **1997**; 337:15–21.
- Loyse A, Bury J, Cohn J, et al. Leave no one behind: response to new evidence and guidelines for the management of cryptococcal meningitis in low-income and middle-income countries. *Lancet Infect Dis* **2019**; 19:e143–7.
- Rolfes MA, Hullsiek KH, Rhein J, et al. The effect of therapeutic lumbar punctures on acute mortality from cryptococcal meningitis. *Clin Infect Dis* **2014**; 59:1607–14.
- Bisson GP, Molefi M, Bellamy S, et al. Early versus delayed antiretroviral therapy and cerebrospinal fluid fungal clearance in adults with HIV and cryptococcal meningitis. *Clin Infect Dis* **2013**; 56:1165–73.
- Chang CC, Dorasamy AA, Gosnell BI, et al. Clinical and mycological predictors of cryptococcosis-associated immune reconstitution inflammatory syndrome. *AIDS* **2013**; 27:2089–99.
- Grant PM, Komarow L, Andersen J, et al. Risk factor analyses for immune reconstitution inflammatory syndrome in a randomized study of early vs. deferred ART during an opportunistic infection. *PLoS One* **2010**; 5:e11416.
- Sidrim JJC, Perdigo-Neto LV, Cordeiro RA, et al. Viral protease inhibitors affect the production of virulence factors in *Cryptococcus neoformans*. *Can J Microbiol* **2012**; 58:932–6.
- Ashton PM, Thanh LT, Trieu PH, et al. Three phylogenetic groups have driven the recent population expansion of *Cryptococcus neoformans*. *Nat Commun* **2019**; 10:2035.
- Smith KD, Achan B, Hullsiek KH, et al. Increased antifungal drug resistance in clinical isolates of *Cryptococcus neoformans* in Uganda. *Antimicrob Agents Chemother* **2015**; 59:7197–204.
- Crabtree Ramirez B, Caro Vega Y, Shepherd BE, et al. Outcomes of HIV-positive patients with cryptococcal meningitis in the Americas. *Int J Infect Dis* **2017**; 63:57–63.