

Washington University School of Medicine

Digital Commons@Becker

---

2020-Current year OA Pubs

Open Access Publications

---

10-2-2021

**Ceftolozane/tazobactam probability of target attainment and outcomes in participants with augmented renal clearance from the randomized phase 3 ASPECT-NP trial**

Andrew F Shorr

Christopher J Bruno

Zufei Zhang

Erin Jensen

Wei Gao

*See next page for additional authors*

Follow this and additional works at: [https://digitalcommons.wustl.edu/oa\\_4](https://digitalcommons.wustl.edu/oa_4)

 Part of the [Medicine and Health Sciences Commons](#)

**Please let us know how this document benefits you.**

---

---

**Authors**

Andrew F Shorr, Christopher J Bruno, Zufei Zhang, Erin Jensen, Wei Gao, Hwa-Ping Feng, Jennifer A Huntington, Brian Yu, Elizabeth G Rhee, Carisa De Anda, Sumit Basu, and Marin H Kollef

RESEARCH

Open Access



# Ceftolozane/tazobactam probability of target attainment and outcomes in participants with augmented renal clearance from the randomized phase 3 ASPECT-NP trial

Andrew F. Shorr<sup>1</sup>, Christopher J. Bruno<sup>2\*</sup>, Zufei Zhang<sup>2</sup>, Erin Jensen<sup>2</sup>, Wei Gao<sup>2</sup>, Hwa-Ping Feng<sup>2</sup>, Jennifer A. Huntington<sup>2</sup>, Brian Yu<sup>2</sup>, Elizabeth G. Rhee<sup>2</sup>, Carisa De Anda<sup>2</sup>, Sumit Basu<sup>2</sup> and Marin H. Kollef<sup>3</sup>

## Abstract

**Background:** The randomized, double-blind, phase 3 ASPECT-NP trial evaluated the efficacy of 3 g of ceftolozane/tazobactam (C/T) versus 1 g of meropenem infused every 8 h for 8 to 14 days for treatment of adults with hospital-acquired bacterial pneumonia (HABP) or ventilator-associated bacterial pneumonia (VABP). We assessed the probability of target attainment and compared efficacy outcomes from ASPECT-NP in participants with augmented renal clearance (ARC) versus those with normal renal function.

**Methods:** Baseline renal function was categorized as normal renal function (creatinine clearance 80–130 mL/min) or ARC (creatinine clearance > 130 mL/min). Population pharmacokinetic models informed Monte Carlo simulations to assess probability of target attainment in plasma and pulmonary epithelial lining fluid. Outcomes included 28-day all-cause mortality and clinical cure and per-participant microbiologic cure rates at the test-of-cure visit.

**Results:** A > 99% and > 80% probability of target attainment was demonstrated for ceftolozane and tazobactam, respectively, in simulated plasma and epithelial lining fluid. Within treatment arms, 28-day all-cause mortality rates in participants with normal renal function (C/T,  $n = 131$ ; meropenem,  $n = 123$ ) and ARC (C/T,  $n = 96$ ; meropenem,  $n = 113$ ) were comparable (data comparisons presented as rate; treatment difference [95% CI]) (C/T: normal renal function, 17.6%; ARC, 17.7%; 0.2 [− 9.6 to 10.6]; meropenem: normal renal function, 20.3%; ARC, 17.7%; − 2.6 [− 12.6 to 7.5]). Clinical cure rates at test-of-cure were also comparable across renal function groups within treatment arms (C/T: normal renal function, 57.3%; ARC, 59.4%; − 2.1 [− 14.8 to 10.8]; meropenem: normal renal function, 59.3%; ARC, 57.5%; 1.8 [− 10.6 to 14.2]). Per-participant microbiologic cure rates at test-of-cure were consistent across renal function groups within treatment arms (C/T: normal renal function, 72.2% [ $n/N = 70/97$ ]; ARC, 71.4% [ $n/N = 55/77$ ]; 0.7 [− 12.4 to 14.2]; meropenem: normal renal function, 75.0% [ $n/N = 66/88$ ]; ARC, 70.0% [ $n/N = 49/70$ ]; 5.0 [− 8.7 to 19.0]).

**Conclusions:** C/T and meropenem resulted in 28-day all-cause mortality, clinical cure, and microbiologic cure rates that were comparable between participants with ARC or normal renal function. In conjunction with high probability of target attainment, these results confirm that C/T (3 g) every 8 h is appropriate in patients with HABP/VABP and ARC.

*Trial registration* ClinicalTrials.gov identifier: NCT02070757, registered February 25, 2014; EudraCT: 2012-002862-11.

\*Correspondence: Christopher.bruno@merck.com

<sup>2</sup> Merck & Co., Inc., 2000 Galloping Hill Road, Kenilworth, NJ 07033, USA  
Full list of author information is available at the end of the article



© The Author(s) 2021. **Open Access** This article is licensed under a Creative Commons Attribution 4.0 International License, which permits use, sharing, adaptation, distribution and reproduction in any medium or format, as long as you give appropriate credit to the original author(s) and the source, provide a link to the Creative Commons licence, and indicate if changes were made. The images or other third party material in this article are included in the article's Creative Commons licence, unless indicated otherwise in a credit line to the material. If material is not included in the article's Creative Commons licence and your intended use is not permitted by statutory regulation or exceeds the permitted use, you will need to obtain permission directly from the copyright holder. To view a copy of this licence, visit <http://creativecommons.org/licenses/by/4.0/>. The Creative Commons Public Domain Dedication waiver (<http://creativecommons.org/publicdomain/zero/1.0/>) applies to the data made available in this article, unless otherwise stated in a credit line to the data.

**Keywords:** Hospital-acquired bacterial pneumonia, Multidrug resistance, *Pseudomonas aeruginosa*, Ventilator-associated bacterial pneumonia

## Background

The most common life-threatening nosocomial infection is pneumonia; nosocomial pneumonia can be further categorized as hospital-acquired bacterial pneumonia (HABP) or ventilator-associated bacterial pneumonia (VABP) [1–3]. HABP and VABP have been associated with mortality rates estimated as high as 50% [1].

HABP and VABP are often caused by drug-resistant pathogens, which are associated with increased mortality in this critically ill population [4–6]. A potential added complication in the treatment of critically ill patients with HABP/VABP is the high prevalence of augmented renal clearance (ARC) in this population [7, 8]. ARC, commonly defined as creatinine clearance (CrCl) > 130 mL/min, can result in suboptimal levels of renally eliminated antibacterial agents, such as  $\beta$ -lactams, thus resulting in worse treatment outcomes [8, 9].

Ceftolozane/tazobactam (C/T), a combination of a potent antipseudomonal cephalosporin (ceftolozane) with a  $\beta$ -lactamase inhibitor (tazobactam), has activity against many gram-negative pathogens, including multidrug-resistant strains, that can cause HABP/VABP [10]. C/T 3 g (ceftolozane 2 g/tazobactam 1 g) administered as a 1-h intravenous (IV) infusion every 8 h is approved for the treatment of adults with HABP/VABP [10, 11]. C/T is primarily excreted via the kidneys and requires dose modification in patients with moderate to severe renal impairment [10]. However, a population pharmacokinetic (PK) analysis based on data from other infection types found that no dose adjustment is necessary in patients with ARC and suggested that a high probability of target attainment (PTA) for C/T was achieved in this patient population [12].

With the approval of the higher C/T dose regimen of 3 g for the treatment of HABP/VABP and the high prevalence of ARC among patients receiving mechanical ventilation, it is important to understand whether a C/T dose adjustment is necessary for patients with HABP/VABP and ARC [9–11, 13]. The large, randomized, controlled, double-blind, phase 3 ASPECT-NP trial was conducted to evaluate C/T versus meropenem in participants with HABP/VABP receiving mechanical ventilation [11, 14]. Using data from ASPECT-NP, we conducted a post hoc analysis to assess PTA and compare efficacy outcomes among participants with ARC (CrCl > 130 mL/min) and those with normal renal function (CrCl 80 to 130 mL/min) to evaluate the recommended C/T dosing regimen specifically for participants with HABP/VABP and ARC.

## Methods

### Study objectives and design

The ASPECT-NP trial (ClinicalTrials.gov identifier: NCT02070757; protocol MK-7625A-008) assessed the safety and efficacy of C/T 3 g (ceftolozane 2 g/tazobactam 1 g) compared with meropenem 1 g; the full methodology has been published previously [14]. The primary objective of the present study was to examine 28-day all-cause mortality (ACM) and clinical and per-participant microbiologic cure rates at the test-of-cure (TOC) visit among participants with ARC (CrCl > 130 mL/min) and those with normal renal function (CrCl 80 to 130 mL/min).

### Analysis population

Eligibility criteria have been previously described [14]. Briefly, the study included participants aged  $\geq 18$  years with confirmed ventilated HABP (vHABP) or VABP at the time of randomization. Participants were excluded if only gram-positive pathogens were detected by gram stain, they developed end-stage renal disease (CrCl < 15 mL/min), required peritoneal dialysis or hemodialysis, had a urine output of < 20 mL/h over a 24-h period, or if they received > 24 h of systemic or inhaled antibacterial agents with gram-negative activity within 72 h before the first dose of study drug (participants were eligible for inclusion if they had persistent, worsening, or new nosocomial pneumonia despite  $\geq 48$  h of antibacterial therapy). The distribution of gram-negative pathogens in the C/T and meropenem groups was similar, including extended spectrum  $\beta$ -lactamase-producing Enterobacterales and multidrug-resistant *Pseudomonas aeruginosa*, and has been previously described [14]. Baseline CrCl was estimated using serum creatinine values, actual body weight, and a Cockcroft–Gault formula specific for each sex [15].

### Study procedures and clinical assessments

As part of the randomization process to facilitate balanced distribution of high-risk participants between both treatment arms, participants were stratified by diagnosis (vHABP or VABP) and age ( $\geq 65$  or < 65 years) before 1:1 assignment to receive C/T or meropenem as a 1-h IV infusion every 8 h for 8 to 14 days. A treatment duration of 14 days was recommended for participants with cultures positive for *Pseudomonas aeruginosa*. Empiric adjunctive gram-negative therapy with IV amikacin (15 mg/kg daily) or alternate aminoglycosides (per site-specific standard of care) was permitted at baseline

for up to 72 h at sites with  $\geq 15\%$  local prevalence of meropenem-resistant *P. aeruginosa*. Empiric adjunctive gram-positive therapy (600 mg of linezolid every 12 h or site-specific standard-of-care alternative) was required for all participants until LRT culture results confirmed absence of *Staphylococcus aureus* or for a minimum of 8 days for participants with baseline cultures positive for *S. aureus*.

Samples for PK analyses were obtained on day 4 (or after day 4 if required) at the following times relative to 1 of the 3 daily study drug infusions: immediately before infusion (within 15 min), at the end of infusion, and 30 to 90 min, 2.5 to 3.5 h, and 5.0 to 6.0 h after study drug administration. Plasma ceftolozane and tazobactam concentrations were determined using validated high-performance liquid chromatography–tandem mass spectrometry.

#### PTA analyses

PTA was assessed using Monte Carlo simulations based on existing population PK models describing plasma concentrations of ceftolozane and tazobactam in patients with HABP/VABP [16], and the simulations were aimed at dose justification for patients with HABP/VABP and varying degrees of renal impairment and augmented renal clearance by assessing the probability of PK/PD target attainment for ceftolozane and tazobactam. NONMEM (Version 7.3.0; Icon, plc, Dublin, Ireland) was used for Monte Carlo simulations. Because CrCl, as a measure of renal function, is a significant predictor of ceftolozane and tazobactam clearance in patients with HABP/VABP, a virtual patient population database stratified by various CrCl categories was generated with each group containing 1000 patients with pneumonia. This virtual population database was generated from a large virtual demographic dataset ( $n = 100,000$ ) maintaining the same relationship between CrCl and weight from a pooled internal Merck demographic dataset from antibacterial (including patients with HABP/VABP enrolled in the ASPECT-NP study) and other infectious disease programs ( $n = 5152$ ). The range of CrCl for the  $> 210$  mL/min group was 210–312 mL/min.

Briefly, these population PK models were developed based on a previously established 2-compartment model with first-order elimination [17]. Plasma ceftolozane and tazobactam concentration data from 16 clinical studies, including ASPECT-NP, informed the plasma parameters of the population PK models. Pulmonary epithelial lining fluid (ELF) ceftolozane and tazobactam concentration data from 2 phase 1 studies, including one conducted in critically ill participants with pneumonia receiving mechanical ventilation, informed the ELF parameters of the population PK models; disposition of ceftolozane and

tazobactam in ELF was described by a hypothetical link model with influx and elimination from the ELF compartment. Among the covariates identified in the existing population PK models in patients with HABP/VABP, CrCl was a significant covariate on ceftolozane and tazobactam clearance; weight and pneumonia were covariates on ceftolozane and tazobactam volume of distributions; and pneumonia was a covariate on the influx and elimination rate constants for the ELF compartment [16].

For the Monte Carlo simulations, we created a simulated population of patients with characteristics similar to that of participants from previous infectious disease clinical trials [16]. From this large pool of simulated patients, 1000 patients with paired body weight and CrCl were randomly drawn for each of the following renal function categories to estimate PTA in each of the CrCl ranges: CrCl 80 to 130 mL/min (normal renal function); CrCl  $> 130$  to  $< 180$  mL/min (ARC); CrCl 180 to  $< 210$  mL/min (ARC); and CrCl  $\geq 210$  mL/min (ARC). The PTA was assessed based on previously established PK/pharmacodynamic (PD) targets and applied to both plasma and ELF [18–21]. The ceftolozane PK/PD target used was 50% of the dosing period that the free ceftolozane drug concentration exceeded the minimum inhibitory concentration (50%  $fT > MIC$ ) of 4  $\mu\text{g/mL}$ ; this target was shown to result in a 2-log kill in a murine infection model [19]. The tazobactam PK/PD target used was 35% of the dosing period that the free tazobactam drug concentration remained above the threshold concentration ( $C_T$ ) of 1  $\mu\text{g/mL}$  (35%  $fT > C_T$ ), restoring ceftolozane antibacterial activity to a 1-log kill [19, 20]. Free drug concentrations were computed assuming protein binding levels of 21% and 0% in plasma and ELF, respectively for ceftolozane, and 30% and 0% in plasma and ELF, respectively, for tazobactam across the range of drug concentrations [22].

#### Clinical outcomes

The primary and key secondary endpoints of ASPECT-NP were 28-day ACM and clinical response at the TOC visit (7 to 14 days after the end-of-treatment visit), respectively, in the intention-to-treat (ITT) population [14]. A clinical response outcome was defined as “cure” if a surviving participant exhibited all of the following: complete resolution of all or most clinical signs and symptoms of pneumonia; no new signs, symptoms, or complications attributable to vHABP/VABP; and no receipt of additional antibacterial therapy administration for vHABP/VABP other than approved adjunctive therapy. “Clinical failure” was defined as progression, relapse, or recurrence of new symptoms; persistence or insufficient improvement of vHABP/VABP; discontinuation of study drug due to resistant LRT pathogens; need for alternative or prolonged antibacterial therapy for

vHABP/VABP; or death due to vHABP/VABP. A microbiologic response defined as “cure” or “presumed cure” included eradication/presumed eradication of all baseline pathogens ( $\geq 1$ -log reduction in bacterial burden and per-pathogen count of  $\leq 10^4$  colony-forming units [CFU]/mL for endotracheal aspirate or sputum specimens,  $\leq 10^3$  CFU/mL for bronchoalveolar lavage specimens, and  $\leq 10^2$  CFU/mL for protected brush specimens from a follow-up LRT culture) or absence of an LRT culture resulting in a patient deemed a clinical cure. Post hoc analyses were conducted to assess 28-day ACM and clinical and microbiologic cure rates at the TOC visit for participants with ARC versus those with normal renal function.

**Statistical analysis**

Assessments were evaluated in the following analysis populations: ITT (all randomized participants, regardless of receipt of study drug); microbiologic ITT (mITT; participants who received any study drug and had  $\geq 1$  confirmed LRT pathogen that was susceptible to  $\geq 1$  study drug); and clinically evaluable (CE; participants who received study drug, adhered to the protocol through the TOC visit, and had an evaluable clinical outcome at the TOC visit).

This post hoc subgroup analysis was not powered to test for inferiority. For 28-day ACM, the treatment difference between renal functional groups was calculated as normal renal function minus ARC; for clinical and microbiologic response, the treatment difference was calculated as ARC minus normal renal function. The 2-sided 95% CIs for the treatment difference in proportions between ARC and normal renal function were calculated as unstratified Newcombe CIs. All statistical

analyses were performed using SAS versions 9.3 and 9.4 (Cary, NC, USA).

**Results**

**PK analysis**

Steady-state plasma PK parameters for ASPECT-NP participants with varying renal function are summarized in Table 1. As anticipated, ceftolozane and tazobactam exposures decreased with increasing CrCl. Steady-state ELF PK parameters with varying renal function and ARC are summarized in Table 2. Similar to the results in plasma, ELF exposures for ceftolozane and tazobactam decreased with increasing CrCl.

**PTA analysis**

Monte Carlo simulation results demonstrated high PTA in plasma and ELF for both ceftolozane and tazobactam at the C/T 3-g dose (ceftolozane 2 g/tazobactam 1 g) approved for treatment of HABP/VABP. More than 99% of all simulated patients were estimated to achieve the ceftolozane PK/PD target in both plasma and ELF across all renal function groups, with no notable differences between plasma and ELF or across patients of different ARC categories (Fig. 1A, B). The tazobactam PK/PD target was achieved by >80% of simulated patients in both plasma and ELF. The PTA for tazobactam in ELF was slightly higher than that of plasma for simulated patients with CrCl of  $\geq 210$  mL/min but was roughly equivalent between ELF and plasma for all other renal function categories (Fig. 1C, D). While high PTA for tazobactam was estimated for all simulated patients regardless of renal function, an incremental decrease in PTA was observed with increased ARC across the 3 simulated ARC categories.

**Table 1** Summary of ceftolozane and tazobactam steady-state plasma exposures in patients with HABP/VABP

Exposure measure	Statistic	Ceftolozane				Tazobactam			
		CrCl $\geq 80$ to < 150 mL/min	CrCl $\geq 150$ to < 180 mL/min	CrCl $\geq 180$ to < 210 mL/min	CrCl $\geq 210$ mL/min	CrCl $\geq 80$ to < 150 mL/min	CrCl $\geq 150$ to < 180 mL/min	CrCl $\geq 180$ to < 210 mL/min	CrCl $\geq 210$ mL/min
AUC <sub>0-8</sub> ( $\mu\text{g} \times \text{h}/\text{mL}$ )	<i>n</i>	138	24	16	20	138	24	16	20
	Geometric mean (geometric %CV)	371 (55.3)	276 (52.6)	248 (59.7)	201 (67.2)	61.9 (80.1)	42.1 (56.2)	42.0 (90.7)	34.8 (85.6)
C <sub>max</sub> ( $\mu\text{g}/\text{mL}$ )	<i>n</i>	138	24	16	20	138	24	16	20
	Geometric mean (geometric %CV)	103 (42.6)	88.6 (40.2)	78.0 (52.7)	65.3 (63.0)	25.8 (45.0)	21.0 (34.3)	19.6 (43.6)	18.6 (48.8)

Among all participants from the intention-to-treat population who had pharmacokinetic data collected

AUC<sub>0-8</sub>, area under the concentration–time curve from time 0 to 8 h after start of infusion; C<sub>max</sub>, maximum drug concentration; CrCl, creatinine clearance; CV, coefficient of variation; HABP/VABP, hospital-acquired bacterial pneumonia/ventilator-associated bacterial pneumonia

**Table 2** Summary of ceftolozane and tazobactam steady-state pulmonary ELF exposures in patients with HABP/VABP

Exposure measure	Statistic	Ceftolozane				Tazobactam			
		CrCl $\geq$ 80 to < 150 mL/min	CrCl $\geq$ 150 to < 180 mL/min	CrCl $\geq$ 180 to < 210 mL/min	CrCl $\geq$ 210 mL/min	CrCl $\geq$ 80 to < 150 mL/min	CrCl $\geq$ 150 to < 180 mL/min	CrCl $\geq$ 180 to < 210 mL/min	CrCl $\geq$ 210 mL/min
AUC <sub>0-8</sub> ( $\mu\text{g} \times \text{h}/\text{mL}$ )	<i>n</i>	138	24	16	20	138	24	16	20
	Geometric mean (geometric %CV)	199 (78.9)	149 (64.0)	127 (86.6)	118 (69.6)	24.7 (108)	14.4 (72.1)	16.0 (85.9)	13.6 (77.5)
<i>C</i> <sub>max</sub> ( $\mu\text{g}/\text{mL}$ )	<i>n</i>	138	24	16	20	138	24	16	20
	Geometric mean (geometric %CV)	28.3 (78.8)	21.0 (69.8)	17.4 (87.8)	15.9 (71.7)	4.68 (107)	2.78 (65.7)	3.31 (92.9)	2.81 (85.6)

Among all participants from the intention-to-treat population who had pharmacokinetic data collected

AUC<sub>0-8</sub>, area under the concentration–time curve from time 0 to 8 h after start of infusion; *C*<sub>max</sub>, maximum drug concentration; CrCl, creatinine clearance; CV, coefficient of variation; ELF, epithelial lining fluid; HABP/VABP, hospital-acquired bacterial pneumonia/ventilator-associated bacterial pneumonia

### Clinical outcomes

Among the 726 participants randomized in ASPECT-NP, 254 (35%) had normal renal function (CrCl 80 to 130 mL/min) and 209 (29%) had ARC (CrCl > 130 mL/min). Within both treatment arms, the proportion of participants with ARC at baseline ranged from 27 to 31% across the various analysis populations. Demographics and baseline characteristics are summarized in Table 3. Compared with the normal renal function groups, the ARC groups in both treatment arms had younger participants and a greater proportion of males. Within the C/T arm, Sequential Organ Failure Assessment (SOFA) scores, Acute Physiology and Chronic Health Evaluation II (APACHE II) scores, Clinical Pulmonary Infection Scores (CPIS), rates of vHABP diagnosis, and previous antibacterial agent use were comparable between the normal renal function group and the ARC group; however, the rate of bacteremia was higher and duration of hospitalization was longer in the ARC group. Within the meropenem treatment arm, participants with ARC had lower SOFA and APACHE II scores compared with participants with normal renal function. Other baseline demographics and clinical characteristics were generally well balanced between normal renal function and ARC groups within each treatment arm.

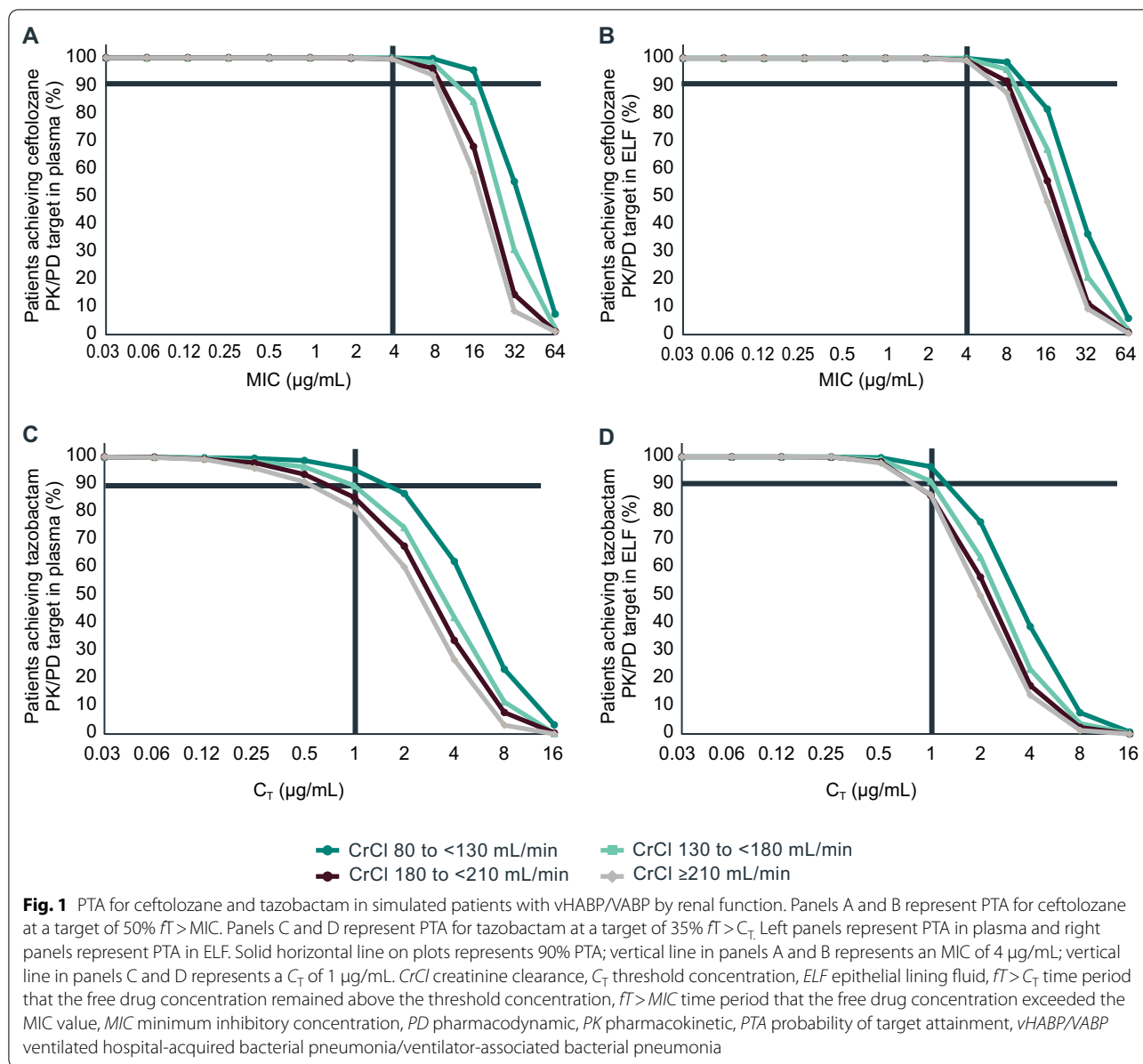
In the ITT and mITT populations, 28-day ACM rates were comparable between participants with normal renal function and ARC in the C/T arm (ITT: normal renal function, 17.6%; ARC, 17.7%; treatment difference, 0.2 [95% CI, -9.6 to 10.6]; mITT: normal renal function, 14.4%; ARC, 13.0%; treatment difference, -1.4 [95% CI, -11.6 to 9.4]; Fig. 2). In the meropenem treatment arm, the 28-day ACM rates for participants in the normal renal function and ARC groups were also comparable in both the ITT and mITT populations (Fig. 2).

In the C/T treatment arm, more than half of all participants in the ITT and CE populations achieved clinical cure at the TOC visit regardless of renal function status (ITT: normal renal function, 57.3%; ARC, 59.4%; treatment difference, -2.1 [95% CI, -14.8 to 10.8]; CE: normal renal function, 65.9%; ARC, 59.7%; treatment difference, 6.2 [95% CI, -9.1 to 21.6]; Fig. 3). Clinical cure rates in the meropenem treatment arm were similar between the normal renal function and ARC groups in both the ITT and CE populations (Fig. 3).

The per-participant microbiologic cure rates at the TOC visit in the mITT population were also comparable across renal function groups in the C/T and meropenem treatment arms (C/T: normal renal function, 72.2%; ARC, 71.4%; treatment difference, 0.7 [95% CI, -12.4 to 14.2]; meropenem: normal renal function, 75.0%; ARC, 70.0%; treatment difference, 5.0 [95% CI, -8.7 to 19.0]; Fig. 4).

### Discussion

The PTA analysis results presented herein support previous findings that demonstrate high PTA with C/T 3 g dosed every 8 h in patients with HABP/VABP and in critically ill participants with and without ARC, without a need for further dose modification [22, 23]. The renal clearance of antibacterial therapeutics has a direct impact on PK. In the case of critically ill patients with ARC, enhanced drug clearance may lead to lower maximum plasma concentration, shorter drug half-life, and lower area under the concentration–time curve, potentially contributing to therapeutic failure [8]. This point is particularly important for drugs such as ceftolozane and tazobactam, which are both renally eliminated and for which efficacy is time-dependent and relies on the  $fT > MIC$  and  $fT > C_T$ , respectively [8, 10, 11]. Previous PTA analyses conducted before the ASPECT-NP study



demonstrated high ceftolozane and tazobactam PTA in plasma and ELF [12, 22]. The current PK analysis expands on the previously published C/T population PK models in two important ways [12, 22]. First, we honed the existing model through inclusion of clinical data from the ASPECT-NP trial to incorporate the effect of pneumonia and ARC on the PK of ceftolozane and tazobactam. In addition, we included data from a phase 1 study that collected ELF PK from critically ill participants with confirmed or suspected pneumonia to provide additional data in the relevant population to increase confidence in the reliability of simulations from previous population PK analyses [18].

The simulated PTA analyses employed in this study used stratified ARC categories: CrCl > 130 to < 180 mL/min, 180 to < 210 mL/min, and ≥ 210 mL/min. With this approach, a high PTA for ceftolozane and tazobactam was observed in both plasma and ELF for all renal function categories, including those with the greatest ARC severity.

ARC occurs in a substantial proportion of critically ill patients including those with HABP/VABP [7–9, 13]. In line with these observations, the ASPECT-NP trial enrolled a significant proportion of participants with ARC. To better understand the impact of ARC on treatment with C/T or meropenem, this post hoc analysis



**Table 3** Baseline patient demographics and clinical characteristics in the ITT population by renal function group

ITT population	Ceftolozane/tazobactam		Meropenem	
	Normal renal function (n = 131)	Augmented renal clearance (n = 96)	Normal renal function (n = 123)	Augmented renal clearance (n = 113)
Male	93 (71.0)	78 (81.3)	84 (68.3)	89 (78.8)
Age (years)				
< 65	75 (57.3)	78 (81.3)	74 (60.2)	96 (85.0)
≥ 65	56 (42.7)	18 (18.8)	49 (39.8)	17 (15.0)
Mean (SD)	59.6 (16.5)	49.3 (15.1)	58.7 (15.6)	48.2 (15.6)
Median (IQR)	63.0 (49.0–71.0)	50.0 (40.5–60.0)	61.0 (50.0–71.0)	49.0 (36.0–60.0)
Weight, kg, median (IQR)	80.0 (72.0–90.0)	85.0 (75.0–95.5)	79.3 (70.0–90.0)	80.0 (72.0–95.0)
Body mass index, kg/m <sup>2</sup> , median (IQR)	26.8 (24.1–29.4)	27.8 (25.1–31.1)	26.3 (24.0–29.4)	27.1 (24.2–30.9)
Baseline CrCl, mL/min, median (IQR)	99.0 (90.0–112.0)	172.3 (145.3–204.4)	100.5 (90.0–113.5)	164.0 (139.6–204.0)
Randomized while in ICU	122 (93.1)	89 (92.7)	113 (91.9)	109 (96.5)
APACHE II score				
< 10	7 (5.3)	8 (8.3)	11 (8.9)	14 (12.4)
10–14	25 (19.1)	17 (17.7)	19 (15.4)	25 (22.1)
15–19	61 (46.6)	45 (46.9)	53 (43.1)	49 (43.4)
20–24	27 (20.6)	20 (20.8)	27 (22.0)	20 (17.7)
25–35	11 (8.4)	6 (6.3)	13 (10.6)	4 (3.5)
≥ 35	0	0	0	0
Missing	0	0	0	1 (0.9)
Mean (SD)	17.2 (4.8)	16.5 (4.9)	17.4 (5.5)	15.6 (5.1)
Median (IQR)	18.0 (15.0–20.0)	16.0 (14.0–20.0)	17.0 (15.0–21.0)	16.0 (12.5–19.0)
Previous antibacterial agent use <sup>a</sup>				
Yes	114 (87.0)	88 (91.7)	111 (90.2)	100 (88.5)
No	17 (13.0)	8 (8.3)	12 (9.8)	13 (11.5)
Primary diagnosis				
vHABP	26 (19.8)	18 (18.8)	33 (26.8)	15 (13.3)
VABP	105 (80.2)	78 (81.3)	90 (73.2)	98 (86.7)
SOFA score				
≤ 7	108 (82.4)	77 (80.2)	82 (66.7)	80 (70.8)
> 7	23 (17.6)	19 (19.8)	41 (33.3)	33 (29.2)
PaO <sub>2</sub> /FiO <sub>2</sub> ratio (mmHg)				
≤ 240	100 (76.3)	61 (63.5)	92 (74.8)	83 (73.5)
> 240	30 (22.9)	33 (34.4)	31 (25.2)	29 (25.7)
Clinical Pulmonary Infection Score (CPIS)				
Missing	1 (0.8)	2 (2.1)	0	1 (0.9)
< 6	9 (6.9)	6 (6.3)	7 (5.7)	14 (12.4)
7	11 (8.4)	5 (5.2)	11 (8.9)	17 (15.0)
8	19 (14.5)	13 (13.5)	19 (15.4)	11 (9.7)
> 8	92 (70.2)	72 (75.0)	86 (69.9)	71 (62.8)
Duration of hospitalization (days) <sup>b</sup>				
< 5	21 (16.0)	23 (24.0)	30 (24.4)	25 (22.1)
≥ 5	110 (84.0)	71 (74.0)	92 (74.8)	88 (77.9)
Missing	0	2 (2.1)	1 (0.8)	0
Mean (SD)	10.6 (7.8)	9.0 (6.5)	9.6 (7.2)	8.8 (6.4)
Median (IQR)	8.0 (6.0–13.0)	8.0 (5.0–12.0)	7.5 (5.0–12.0)	7.0 (5.0–11.0)
Duration of mechanical ventilation (days) <sup>b</sup>				
< 5	54 (41.2)	40 (41.7)	59 (48.0)	51 (45.1)
≥ 5 <sup>c</sup>	77 (58.8)	55 (57.3)	64 (52.0)	61 (54.0)

**Table 3** (continued)

ITT population	Ceftolozane/tazobactam		Meropenem	
	Normal renal function (n = 131)	Augmented renal clearance (n = 96)	Normal renal function (n = 123)	Augmented renal clearance (n = 113)
Missing	0	1 (1.0)	0	1 (0.9)
Mean (SD)	7.2 (6.3)	21.5 (99.6)	7.0 (6.1)	7.5 (7.4)
Median (IQR)	5.6 (3.5–9.2)	5.9 (3.5–10.5)	5.5 (2.8–9.0)	5.5 (3.5–9.2)
Previous unsuccessful antibacterial therapy for current episode of vHABP/VABP <sup>d</sup>				
Yes	21 (16.0)	14 (14.6)	12 (9.8)	14 (12.4)
No	110 (84.0)	82 (85.4)	111 (90.2)	99 (87.6)
Bacteremia (gram-negative respiratory pathogen)				
Yes	4 (3.1)	7 (7.3)	4 (3.3)	10 (8.8)
No	127 (96.9)	89 (92.7)	119 (96.7)	103 (91.2)

Data are shown as n (%) unless otherwise specified

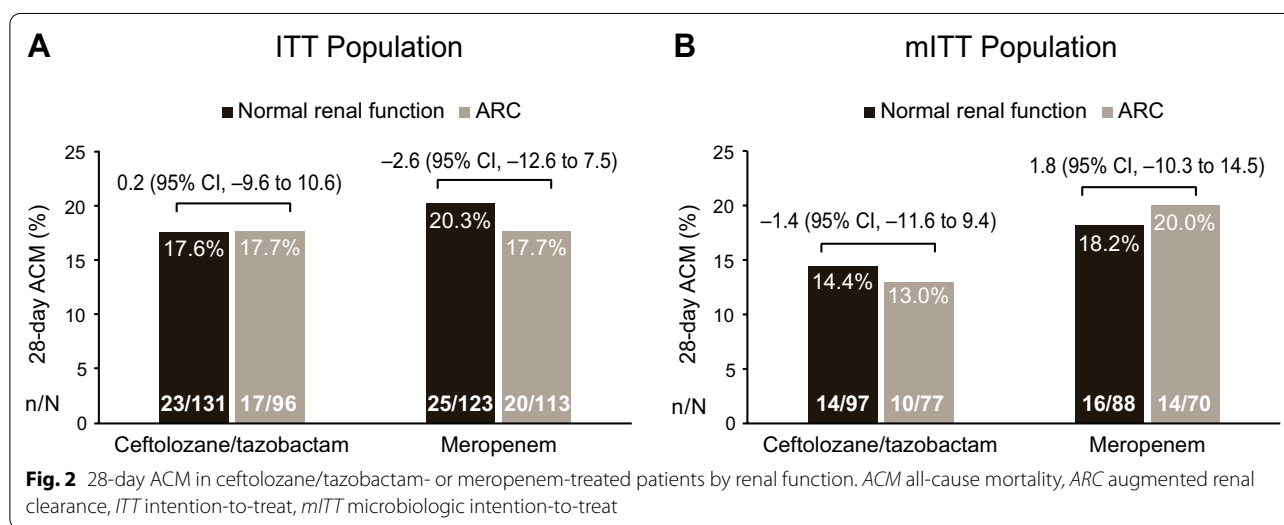
APACHE II Acute Physiology and Chronic Health Evaluation II, CrCl creatinine clearance, ICU intensive care unit, IQR interquartile range, ITT intention-to-treat, SOFA Sequential Organ Failure Assessment, VABP ventilator-associated bacterial pneumonia, vHABP ventilated hospital-acquired bacterial pneumonia

<sup>a</sup> Antibacterial therapy received in the 14 days before the first dose of study drug

<sup>b</sup> Before randomization

<sup>c</sup> Some of these patients may have been unsuccessfully treated with antibacterial therapy for the current episode of vHABP/VABP before randomization, and the denominator includes patients with vHABP; thus, this number is not an exact substitute for late VABP

<sup>d</sup> Persistent or worsening signs/symptoms of vHABP/VABP after ≥ 48 h of antibacterial therapy against gram-negative pathogens

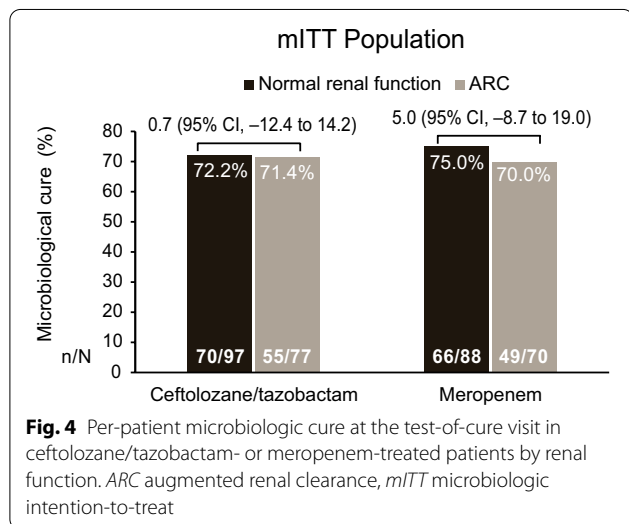
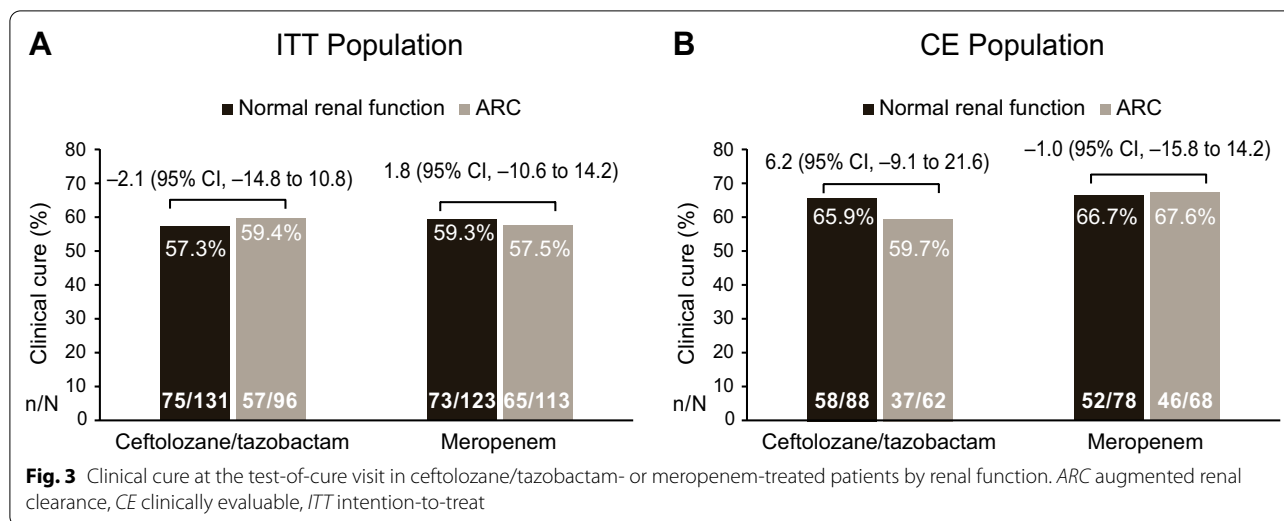


**Fig. 2** 28-day ACM in ceftolozane/tazobactam- or meropenem-treated patients by renal function. ACM all-cause mortality, ARC augmented renal clearance, ITT intention-to-treat, mITT microbiologic intention-to-treat

directly compared efficacy results among participants from ASPECT-NP with normal renal function versus those with ARC. Overall, 28-day ACM, clinical cure, and microbiologic cure rates were comparable between normal renal function and ARC groups in both treatment arms. Overall, rates of 28-day ACM and clinical cure in both treatment arms were comparable with rates reported for an analysis of 4 previous phase 3, multinational, antibacterial clinical trials in participants with HABP/VABP caused by gram-negative pathogens (pooled 28-day ACM, 17.1%; pooled clinical success rate, 59.9%) [24].

In the C/T treatment arm, participants with ARC had comparable CPIS, SOFA scores, and APACHE II scores and similar rates of previous antibacterial agent use and days of ventilation before randomization, yet higher rates of bacteremia and longer duration of hospitalization. Overall, the demographic and baseline data in the C/T arm show that the ARC group was younger and predominantly male, similar to other studies of ARC, but did not differ substantially from participants with normal renal function in terms of HABP/VABP severity [8, 9, 25–28].

The previously published results from the overall population of the ASPECT-NP trial demonstrated that



C/T was noninferior to meropenem for both the primary endpoint of 28-day ACM and the key secondary endpoint of clinical response at the TOC visit [14]. The results of the ASPECT-NP study contrast with other recent phase 3 HABP/VABP studies of novel antibacterial agents that failed to show noninferiority [26, 29, 30]. The failure of doripenem to show noninferiority may be on account of the difference in treatment regimen durations between comparator arms, with a 7-day doripenem regimen versus a 10-day imipenem-cilastatin regimen [31]. In the tigecycline and ceftobiprole studies, the experimental therapy was given at standard doses that had previously shown to be efficacious for non-HABP/VABP indications [29, 30, 32, 33]. ARC has been associated with subtherapeutic concentrations of

$\beta$ -lactam antibacterials and higher rates of antibacterial treatment failure, suggesting a need for modified dosing regimens to maintain efficacy in these critically ill patients [34, 35]. Thus, the presence of ARC in the critically ill HABP/VABP study population of the tigecycline and ceftobiprole trials may have led to underdosing and contributed to treatment failure [36]. Based on prior population PK modeling that balanced the effect of ARC and the need to achieve therapeutic concentrations in ELE, a C/T dosing regimen of 3 g every 8 h (which is double the dose approved for treatment of complicated urinary tract infection and complicated intra-abdominal infection) was chosen for study in the ASPECT-NP trial. In a previous phase 1 study of critically ill participants with ARC, confirmed by direct CrCl measurement from urine, the 3 g C/T dose achieved PK/PD targets and was determined to be appropriate for patients with ARC [37]. In the current analysis, the comparable 28-day ACM, clinical cure, and microbiologic cure rates between participants with normal renal function and those with ARC underscore the appropriateness of the C/T dosing regimen chosen for this study. Results held across all study populations including the ITT, CE, and mITT, highlighting the robustness of these findings.

The comparator, meropenem, used in the ASPECT-NP study was dosed at 1 g every 8 h, which is the recommended dose in both the meropenem label and in the international treatment guidelines for HABP/VABP [1]. A PK modeling study suggested that a higher dose of meropenem (2 g every 8 h) or dosing by extended infusion may be required for treatment of HABP/VABP [38]. As meropenem PK sampling was not conducted in the ASPECT-NP study, it is not possible to comment on the

relationship between meropenem exposure and response. However, if the meropenem dosing used in this study resulted in clinically relevant underexposure, it would be expected to manifest as lower efficacy and be most evident in participants with ARC. Meropenem-treated participants had 28-day ACM rates as well as clinical and microbiologic response rates that were comparable between the normal renal function and ARC groups, suggesting that the meropenem dosing used in this trial was adequate for participants with ARC. However, the meropenem dosing regimen used in this trial may not be appropriate for all patients with HABP/VABP.

The current analysis is not without limitations. The categorization of ARC was based on baseline-assessed CrCl measurement without postbaseline reclassification of renal function category or assessment of ARC duration. Specifically, for this analysis, participants who entered the study with ARC but later reverted to normal renal function or developed renal insufficiency would have had their therapy dosing adjusted based on their changing renal function but would have remained categorized as having ARC. However, published data suggest that the presence of ARC upon admission to the intensive care unit strongly predicts sustained CrCl elevation at 1 week, suggesting that ARC would have persisted throughout at least the first 7 days of study therapy in most participants [9]. Additionally, use of the Cockcroft–Gault formula to estimate baseline CrCl in lieu of direct measurement from urine samples is also a limitation. In patients with obesity, use of the Cockcroft–Gault formula may result in overestimation of CrCl [39]. Although this study population included a substantial number of participants with ARC, the absolute size of this subgroup was still relatively small; thus, the analysis was underpowered to detect statistical differences in clinical outcomes between the C/T-treated participants with ARC and meropenem-treated participants with ARC. Therefore, this analysis focused on differences between renal subgroups within each treatment arm but was not powered for hypothesis testing of such comparisons; it is possible that differences in efficacy rates between participants with normal renal function and ARC may have been more pronounced in a larger study. Finally, the PTA analysis was conducted with simulated patients, and PK/PD data for plasma and ELF may not be representative of clinical samples.

## Conclusions

Using a PK/PD target of 50%  $fT > MIC$  of 4  $\mu\text{g/mL}$ , the PTA for ceftolozane in plasma and pulmonary ELF was  $>99\%$  in patients with ARC. The PTA was  $>80\%$  for tazobactam in both plasma and ELF using a PK/PD target of 35%  $fT > C_T$  of 1  $\mu\text{g/mL}$ , regardless of renal function status. Comparable 28-day ACM rates and clinical cure

and microbiologic cure rates at the TOC visit were found across the C/T and meropenem treatment arms for participants with normal renal function and those with ARC. These results indicate that C/T 3 g administered every 8 h is an appropriate dose for critically ill patients with HABP/VABP and ARC.

## Abbreviations

ACM: All-cause mortality; APACHE II: Acute Physiology and Chronic Health Evaluation II; ARC: Augmented renal clearance; CE: Clinically evaluable; CFU: Colony-forming units; CPIS: Clinical Pulmonary Infection Score; CrCl: Creatinine clearance; C/T: Ceftolozane/tazobactam;  $C_T$ : Threshold concentration; ELF: Epithelial lining fluid;  $fT > C_T$ : Time period that the free drug concentration remained above the threshold concentration;  $fT > MIC$ : Time period that the free drug concentration exceeded the MIC value; HABP: Hospital-acquired bacterial pneumonia; ICU: Intensive care unit; IQR: Interquartile range; ITT: Intention-to-treat; LRT: Lower respiratory tract; MIC: Minimum inhibitory concentration; mITT: Microbiologic intention-to-treat; PK: Pharmacokinetic; PTA: Probability of target attainment; SOFA: Sequential Organ Failure Assessment; TOC: Test of cure; VABP: Ventilator-associated bacterial pneumonia; vHABP: Ventilated hospital-acquired bacterial pneumonia.

## Acknowledgements

Medical writing and/or editorial assistance was provided by Jessica Deckman, PhD, CMPP, and Todd Waldron, PhD, CMPP, of The Lockwood Group, Stamford, CT, USA. This assistance was funded by Merck Sharp & Dohme Corp., a subsidiary of Merck & Co., Inc., Kenilworth, NJ, USA (MSD). This research was presented at the 49th Critical Care Congress of the Society of Critical Care Medicine (SCCM), February 16–19, 2020, Orlando, FL.

## Authors' contributions

EGR contributed to the study conception or design, and the acquisition, analysis, and interpretation of data. MHK contributed to the study conception or design and the interpretation of data. AFS, BY, CJB, CDA, EJ, H-PF, JAH, SB, WG, and ZZ contributed to the analysis and/or interpretation of data. All authors revised the work critically for important intellectual content and provided final approval of the version to be published. All authors read and approved the final manuscript.

## Funding

Funding for this research was provided by MSD.

## Availability of data and materials

MSD's data sharing policy, including restrictions, is available at [http://engagezone.msd.com/ds\\_documentation.php](http://engagezone.msd.com/ds_documentation.php). Requests for access to the clinical study data can be submitted through the EngageZone site or via email to [dataaccess@merck.com](mailto:dataaccess@merck.com).

## Declarations

### Ethics approval and consent to participate

The ASPECT-NP study was conducted in accordance with the principles of Good Clinical Practice and was approved by the appropriate institutional review boards and regulatory agencies. All participants or legally acceptable representatives provided informed consent.

### Consent for publication

Not applicable.

### Competing interests

AFS reports advisory board membership for Combioxin SA. CJB, ZZ, EJ, WG, H-PF, JAH, BY, EGR, SB, and CDA are employees of MSD and may own stock and/or hold stock options in Merck & Co., Inc., Kenilworth, NJ, USA. MHK reports advisory board and speaker's bureau fees and institutional research funding from MSD.

## Author details

<sup>1</sup>Georgetown University, Washington, DC, USA. <sup>2</sup>Merck & Co, Inc., 2000 Galloping Hill Road, Kenilworth, NJ 07033, USA. <sup>3</sup>Washington University School of Medicine, St. Louis, MO, USA.

Received: 11 June 2021 Accepted: 16 September 2021

Published online: 02 October 2021

## References

- Kalil AC, Metersky ML, Klompas M, Muscedere J, Sweeney DA, Palmer LB, et al. Management of adults with hospital-acquired and ventilator-associated pneumonia: 2016 clinical practice guidelines by the Infectious Diseases Society of America and the American Thoracic Society. *Clin Infect Dis*. 2016;63:e61-111.
- Magill SS, Edwards JR, Bamberg W, Beldavs ZG, Dumyati G, Kainer MA, et al. Multistate point-prevalence survey of health care-associated infections. *N Engl J Med*. 2014;370:1198-208.
- Peleg AY, Hooper DC. Hospital-acquired infections due to gram-negative bacteria. *N Engl J Med*. 2010;362:1804-13.
- Micek ST, Kollef MH, Torres A, Chen C, Rello J, Chastre J, et al. *Pseudomonas aeruginosa* nosocomial pneumonia: impact of pneumonia classification. *Infect Control Hosp Epidemiol*. 2015;36:1190-7.
- Micek ST, Wunderink RG, Kollef MH, Chen C, Rello J, Chastre J, et al. An international multicenter retrospective study of *Pseudomonas aeruginosa* nosocomial pneumonia: impact of multidrug resistance. *Crit Care*. 2015;19:219.
- Paramythiotou E, Routsis C. Association between infections caused by multidrug-resistant gram-negative bacteria and mortality in critically ill patients. *World J Crit Care Med*. 2016;5:111-20.
- De Waele JJ, Dumoulin A, Janssen A, Hoste EA. Epidemiology of augmented renal clearance in mixed ICU patients. *Minerva Anesthesiol*. 2015;81:1079-85.
- Mahmoud SH, Shen C. Augmented renal clearance in critical illness: an important consideration in drug dosing. *Pharmaceutics*. 2017;9:36.
- Udy AA, Baptista JP, Lim NL, Joynt GM, Jarrett P, Wockner L, et al. Augmented renal clearance in the ICU: results of a multicenter observational study of renal function in critically ill patients with normal plasma creatinine concentrations\*. *Crit Care Med*. 2014;42:520-7.
- ZERBAXA<sup>®</sup> (ceftolozane and tazobactam). Summary of product characteristics. MSD B.V.; 2019.
- ZERBAXA<sup>®</sup> (ceftolozane and tazobactam). US Prescribing information. Merck Sharpe & Dohme Corp; 2019.
- Xiao AJ, Caro L, Popejoy MW, Huntington JA, Kullar R. PK/PD target attainment with ceftolozane/tazobactam using Monte Carlo simulation in patients with various degrees of renal function, including augmented renal clearance and end-stage renal disease. *Infect Dis Ther*. 2017;6:137-48.
- Udy AA, Roberts JA, Shorr AF, Boots RJ, Lipman J. Augmented renal clearance in septic and traumatized patients with normal plasma creatinine concentrations: identifying at-risk patients. *Crit Care*. 2013;17:R35.
- Kollef MH, Nováček M, Kivistik Ü, Réa-Neto Á, Shime N, Martin-Loeches I, et al. Ceftolozane-tazobactam versus meropenem for treatment of nosocomial pneumonia (ASPECT-NP): a randomised, controlled, double-blind, phase 3, non-inferiority trial. *Lancet Infect Dis*. 2019;19:1299-311.
- Cockcroft DW, Gault MH. Prediction of creatinine clearance from serum creatinine. *Nephron*. 1976;16:31-41.
- Zhang Z, Patel YT, Fiedler-Kelly J, Feng HW, Bruno CJ, Gao W. Population pharmacokinetic analysis for plasma and ELF ceftolozane/tazobactam concentration in patients with ventilated nosocomial pneumonia. *J Clin Pharmacol*. 2021;61:254-68.
- Chandorkar G, Xiao A, Mouksassi MS, Hershberger E, Krishna G. Population pharmacokinetics of ceftolozane/tazobactam in healthy volunteers, subjects with varying degrees of renal function and patients with bacterial infections. *J Clin Pharmacol*. 2015;55:230-9.
- Caro L, Nicolau DP, De Waele JJ, Kuti JL, Larson KB, Gadzicki E, et al. Lung penetration, bronchopulmonary pharmacokinetic/pharmacodynamic profile and safety of 3 g of ceftolozane/tazobactam administered to ventilated, critically ill patients with pneumonia. *J Antimicrob Chemother*. 2020;75:1546-53.
- Craig WA, Andes DR. In vivo activities of ceftolozane, a new cephalosporin, with and without tazobactam against *Pseudomonas aeruginosa* and Enterobacteriaceae, including strains with extended-spectrum  $\beta$ -lactamases, in the thighs of neutropenic mice. *Antimicrob Agents Chemother*. 2013;57:1577-82.
- Melchers MJ, Mavridou E, van Mil AC, Lagarde C, Mouton JW. Pharmacodynamics of ceftolozane combined with tazobactam against Enterobacteriaceae in a neutropenic mouse thigh model. *Antimicrob Agents Chemother*. 2016;60:7272-9.
- Vanscoy B, Mendes RE, McCauley J, Bhavnani SM, Bulik CC, Okusanya OO, et al. Pharmacological basis of  $\beta$ -lactamase inhibitor therapeutics: tazobactam in combination with ceftolozane. *Antimicrob Agents Chemother*. 2013;57:5924-30.
- Xiao AJ, Miller BW, Huntington JA, Nicolau DP. Ceftolozane/tazobactam pharmacokinetic/pharmacodynamic-derived dose justification for phase 3 studies in patients with nosocomial pneumonia. *J Clin Pharmacol*. 2016;56:56-66.
- Sime FB, Lassig-Smith M, Starr T, Stuart J, Pandey S, Parker SL, et al. Population pharmacokinetics of unbound ceftolozane and tazobactam in critically ill patients without renal dysfunction. *Antimicrob Agents Chemother*. 2019;63:e01265-19.
- Bart SM, Rubin D, Kim P, Farley JJ, Nambiar S. Trends in hospital-acquired and ventilator-associated bacterial pneumonia trials. *Clin Infect Dis*. 2021;73:e602-8.
- Chu Y, Luo Y, Qu L, Zhao C, Jiang M. Application of vancomycin in patients with varying renal function, especially those with augmented renal clearance. *Pharm Biol*. 2016;54:2802-6.
- Kollef MH, Chastre J, Clavel M, Restrepo MI, Michiels B, Kaniga K, et al. A randomized trial of 7-day doripenem versus 10-day imipenem-cilastatin for ventilator-associated pneumonia. *Crit Care*. 2012;16:R218.
- Claus BO, Hoste EA, Colpaert K, Robays H, Decruyenaere J, De Waele JJ. Augmented renal clearance is a common finding with worse clinical outcome in critically ill patients receiving antimicrobial therapy. *J Crit Care*. 2013;28:695-700.
- Udy AA, Dulhunty JM, Roberts JA, Davis JS, Webb SAR, Bellomo R, et al. Association between augmented renal clearance and clinical outcomes in patients receiving  $\beta$ -lactam antibiotic therapy by continuous or intermittent infusion: a nested cohort study of the BLING-II randomised, placebo-controlled, clinical trial. *Int J Antimicrob Agents*. 2017;49:624-30.
- Awad SS, Rodriguez AH, Chuang YC, Marjanek Z, Pareigis AJ, Reis G, et al. A phase 3 randomized double-blind comparison of ceftobiprole medocaril versus ceftazidime plus linezolid for the treatment of hospital-acquired pneumonia. *Clin Infect Dis*. 2014;59:51-61.
- Freire AT, Melnyk V, Kim MJ, Datsenko O, Dzyublik O, Glumcher F, et al. Comparison of tigecycline with imipenem/cilastatin for the treatment of hospital-acquired pneumonia. *Diagn Microbiol Infect Dis*. 2010;68:140-51.
- Tang HJ, Lai CC. Doripenem for treating nosocomial pneumonia and ventilator-associated pneumonia. *Lancet Infect Dis*. 2020;20:20.
- TYGACIL<sup>®</sup> (tigecycline). Prescribing information. Wyeth Pharmaceuticals Inc; 2019.
- ZEVTERA<sup>®</sup> (ceftobiprole medocaril powder for injection). Product monograph. AVIR Pharma Inc; 2019.
- Udy AA, Varghese JM, Altukroni M, Briscoe S, McWhinney BC, Ungerer JP, et al. Subtherapeutic initial  $\beta$ -lactam concentrations in select critically ill patients: association between augmented renal clearance and low trough drug concentrations. *Chest*. 2012;142:30-9.
- Carlier M, Carrette S, Roberts JA, Stove V, Verstraete A, Hoste E, et al. Meropenem and piperacillin/tazobactam prescribing in critically ill patients: does augmented renal clearance affect pharmacokinetic/pharmacodynamic target attainment when extended infusions are used? *Crit Care*. 2013;17:R84.
- Udy AA, Roberts JA, De Waele JJ, Paterson DL, Lipman J. What's behind the failure of emerging antibiotics in the critically ill? Understanding the impact of altered pharmacokinetics and augmented renal clearance. *Int J Antimicrob Agents*. 2012;39:455-7.
- Nicolau DP, De Waele J, Kuti JL, Caro L, Larson KB, Yu B, et al. Pharmacokinetics and pharmacodynamics of ceftolozane/tazobactam in critically ill patients with augmented renal clearance. *Int J Antimicrob Agents*. 2021;57:106299.

38. Frippiat F, Musuamba FT, Seidel L, Albert A, Denooz R, Charlier C, et al. Modelled target attainment after meropenem infusion in patients with severe nosocomial pneumonia: the PROMESSE study. *J Antimicrob Chemother.* 2015;70:207–16.
39. Demirovic JA, Pai AB, Pai MP. Estimation of creatinine clearance in morbidly obese patients. *Am J Health Syst Pharm.* 2009;66:642–8.

### **Publisher's Note**

Springer Nature remains neutral with regard to jurisdictional claims in published maps and institutional affiliations.

**Ready to submit your research? Choose BMC and benefit from:**

- fast, convenient online submission
- thorough peer review by experienced researchers in your field
- rapid publication on acceptance
- support for research data, including large and complex data types
- gold Open Access which fosters wider collaboration and increased citations
- maximum visibility for your research: over 100M website views per year

**At BMC, research is always in progress.**

Learn more [biomedcentral.com/submissions](https://biomedcentral.com/submissions)

