

# Predictors of Visual Acuity Outcomes after Anti–Vascular Endothelial Growth Factor Treatment for Macular Edema Secondary to Central Retinal Vein Occlusion

Piyali Sen, MBBS,<sup>1,2</sup> Sarega Gurudas, MSc,<sup>2</sup> Jayashree Ramu, MBBS,<sup>1</sup> Namritha Patrao, MS,<sup>1</sup> Shruti Chandra, MS,<sup>1,2</sup> Rajna Rasheed, MS,<sup>1</sup> Luke Nicholson, FRCOphth,<sup>1</sup> Tunde Peto, PhD,<sup>3</sup> Sobha Sivaprasad, FRCOphth,<sup>1,2</sup> Philip Hykin, FRCOphth<sup>1,2</sup>

**Purpose:** To evaluate whether baseline demographic, clinical, and OCT characteristics predict visual acuity (VA) outcomes in patients receiving anti–vascular endothelial growth factor (VEGF) therapy for macular edema (ME) due to central retinal vein occlusion (CRVO).

**Design:** Post hoc analysis of the randomized noninferiority trial (Lucentis, Eylea, Avastin in CRVO) LEAVO Study from December 12, 2014, to December 16, 2016, carried out across 44 UK National Health Service ophthalmology departments.

**Participants:** Data on 267 participants with a baseline best-corrected mean visual acuity (BCVA) range of 19 to 78 Early Treatment Diabetic Retinopathy Study letter score (approximate Snellen equivalent, 20/32 to 20/320) who had central subfield thickness (CST)  $\geq 320$   $\mu\text{m}$  on Spectralis OCT (Heidelberg Engineering) were analyzed.

**Methods:** Study participants were randomized to receive repeated intravitreal injections of ranibizumab (0.5 mg/50  $\mu\text{l}$ ), aflibercept (2.0 mg/50  $\mu\text{l}$ ), or bevacizumab (1.25 mg/50  $\mu\text{l}$ ), and a protocol-driven pro re nata re-treatment regimen at 4 to 8 weekly visits was followed up to week 100 after 4 mandated 4-weekly loading injections.

**Main Outcome Measures:** Change in BCVA and percentage of patients gaining  $\geq 10$  letters and achieving BCVA letter score  $> 70$  letters at 52 and 100 weeks.

**Results:** The analysis was adjusted for treatment effects and confirmed by sensitivity analysis. Age  $\geq 75$  years is a poor predictor for all 3 visual outcomes. Lower baseline BCVA predicted 10-letter gainers and higher gains in BCVA, although it is a poor predictor of achieving  $> 70$  Early Treatment Diabetic Retinopathy Study letters. None of the baseline OCT morphologic characteristics except ellipsoid zone (EZ) integrity influenced any visual outcomes. Both baseline CST and total macular volume showed a nonlinear relation to 10-letter gainers, with CST  $> 900$   $\mu\text{m}$  being a poor prognostic indicator. Baseline CST and macular volume did not predict mean change in BCVA or BCVA  $> 70$  letters at 52 and 100 weeks. The sensitivity analysis conclusions after removing iCRVO were similar.

**Conclusions:** At presentation, younger age, higher baseline BCVA, and a definitely intact subfoveal EZ are predictors of BCVA score  $> 70$  letters at 100 weeks. *Ophthalmology Retina* 2021;5:1115-1124 © 2021 by the American Academy of Ophthalmology. This is an open access article under the CC BY license (<http://creativecommons.org/licenses/by/4.0/>).



Supplemental material available at [www.opthalmologyretina.org](http://www.opthalmologyretina.org).

Macular edema (ME) is the major cause of visual impairment in patients with central retinal vein occlusion (CRVO).<sup>1</sup> OCT is the key imaging modality for diagnosis and monitoring ME treatment response.<sup>2</sup> Furthermore, re-treatment criteria are based on visual acuity (VA) and OCT central subfield thickness (CST) changes from baseline or previous visit. Therefore, we evaluated whether visual prognosis after treatment with anti–vascular endothelial growth factor (VEGF) therapy for ME secondary to CRVO could be predicted by baseline VA and OCT parameters.

Several reports emphasize the association of certain ME morphologic features with poor VA, including the presence

of macular subretinal fluid, loss of integrity of outer retinal layers including the ellipsoid zone (EZ) or external limiting membrane (ELM), disorganization of the inner retinal layers, hyper-reflective foci, large cystoid spaces, and vitreoretinal interface abnormalities.<sup>3-6</sup> These parameters have been evaluated principally in diabetic ME.<sup>7</sup> However, in CRVO, the onset of ME is typically more acute and initial macular volume and CST are greater than in diabetic ME. Therefore, we evaluated whether there are CRVO-specific OCT predictors of visual outcome.

Previous reports have only studied short-term outcomes of best-corrected visual acuity (BCVA) predictors in

CRVO-related ME.<sup>8,9</sup> This report describes analyses of visual outcomes in the LEAVO participants based on baseline VA and Spectralis OCT (Heidelberg Engineering) parameters to better understand treatment benefit by 100 weeks. The 52-week outcome is reported as a secondary outcome. The LEAVO study is a randomized, controlled, prospective, multicenter, noninferiority trial that compared 3 available anti-VEGF agents for ME due to CRVO.<sup>10</sup> At week 100, the primary outcome showed bevacizumab was not inferior, whereas aflibercept was not inferior to ranibizumab. The proportion of participants who gained  $\geq 10$  letters at 100 weeks was not statistically different between treatment arms (ranibizumab 63%, aflibercept 68%, and bevacizumab 63%). Only participants who had Spectralis OCT throughout the study timelines were included because key grading features are better visualized with this device.

## Methods

The LEAVO study was conducted across 44 clinical sites throughout the United Kingdom. Each patient provided informed consent, and the study was ethics approved (National Research Ethics Service Committee London - London Bridge, 04/09/2014, ref: 14/LO/1043). The study adhered to the Declaration of Helsinki.

## Participants

Eligible patients for this study had baseline BCVA Early Treatment Diabetic Retinopathy Study letters between 19 and 78 and spectral domain OCT CST  $\geq 320$   $\mu\text{m}$  due to ME secondary to CRVO of less than 12 months duration in the study eye. Key exclusion criteria included ME due to other ocular pathology including diabetic retinopathy, any eye condition affecting VA during the study, or intravitreal injection of corticosteroids 90 days or anti-VEGF therapy 60 days before recruitment were excluded. A study participant could have only 1 study eye.<sup>11</sup>

## Treatment Regimen

After 4-weekly anti-VEGF injections until week 12, week 16 and 20 visits were mandated where treatment was given at these and all subsequent visits to week 96 only if re-treatment criteria were met. Re-treatment criteria included a decrease in VA of  $\geq 6$  letters due to increase in CST or an improvement in VA  $\geq 6$  letters between the current and most recent visit, or CST  $> 320$   $\mu\text{m}$  or  $> 50$   $\mu\text{m}$  increase in CST from lowest recorded reading.

## Assessment

Standardized refraction was performed by certified optometrists and Early Treatment Diabetic Retinopathy Study BCVA letter score measured at 4 m. Postmydriatic Spectralis OCT images were obtained by certified operators. Retinal morphology was assessed using the Spectralis macular raster with dimensions of  $30 \times 25$  degrees and 31-line scans at 241- $\mu\text{m}$  spacing. Five horizontal OCT scans at baseline, 1 B-scan encompassing the fovea, and 2-line scans covering 500  $\mu\text{m}$  superior and 500  $\mu\text{m}$  inferior to the fovea, respectively, were assessed for morphologic features as defined in Table S1 (available at [www.opthalmologyretina.org/](http://www.opthalmologyretina.org/)). All scans were analyzed by masked graders at the NetWOC UK Reading Centre and morphologic features by masked and trained retinal fellows at Moorfields Eye Hospital. The anti-VEGF agent and number of injections received by each patient were recorded.

## Outcomes

The VA outcomes included change in BCVA at 100 weeks, proportion of 10-letter gainers (final BCVA baseline  $\geq 10$  letters), and BCVA  $> 70$  letters at 100 weeks.

## Statistical Analysis

Baseline characteristics of the study population are summarized using mean (standard deviation [SD]) or n (%). Initially, analysis was conducted on the complete sample of observations available at the univariate level to retain as many samples as possible for statistical power (available-case analysis). Furthermore, covariates with less than 5% missing or ungradable were set to missing and excluded from the analysis; otherwise, where there were more than 5% ungradable observations, these were modeled as a separate category or missing indicator.<sup>12</sup> Correlations between BCVA and the continuous parameters at baseline and week 100 were investigated using Spearman's rank correlation coefficient (95% confidence interval [CI]). The baseline characteristics and OCT parameters were analyzed using linear and logistic regression for the continuous and binary outcomes, respectively. Continuous variables were modeled using fractional polynomials (fp),<sup>13,14</sup> where a linear fit was not adequate. The fp transformations were described using component-plus-residual plots. Likelihood ratio (LR) tests and Akaike information criterion were used to compare linear and nonlinear models. Linear splines were also generated and plotted to verify nonlinearity in situations where there might be potential multicollinearity between fp terms. All analyses were adjusted for treatment type, age, baseline VA, and disease duration. Variables with *P* values  $> 0.1$  in the univariate-adjusted analysis qualified for inclusion in the multivariable models where backward elimination was performed with a stay criterion set to a nominal *P* value of 5%. Explanatory power of the final models was interpreted using the  $R^2$  index (Mcfaddens  $R^2$  for logistic regression models). Analysis was repeated at week 52. In the sensitivity analysis, because of a small proportion of participants presenting with ischemic CRVO at baseline, we replicated all analysis after excluding these patients. The selection criteria for the optimal fp functional form (alpha) was increased from 0.05 to 0.1 because of reduced sample size. The nonlinear functional form was also verified using flexible linear splines. All statistical analysis was performed in Stata version 16.<sup>15</sup>

## Results

A total of 267 of 463 randomized participants in the LEAVO trial had Spectralis OCT data and completed the 2-year visit (Fig S1 shows the participant flowchart, available at [www.opthalmologyretina.org/](http://www.opthalmologyretina.org/)). In this study cohort, 28 participants (10.49%) had ischemic CRVO at baseline. The treatment allocation for this cohort were ranibizumab (n=92), aflibercept (n=89), and bevacizumab (n=86). Table 1 shows the baseline characteristics of these participants and the treatment received.

## Correlations

Figure 1 shows the Spearman's correlation coefficients (95% CI) between baseline BCVA with CST, total macular volume, change in BCVA at 100 weeks, and final BCVA at 100 weeks. Table S2 (available at [www.opthalmologyretina.org/](http://www.opthalmologyretina.org/)) shows the correlations between baseline risk factors in the primary cohort and testing associations between all baseline risk factors. Baseline BCVA correlated with all OCT variables except subretinal

Table 1. Baseline Characteristics and Treatment Received

Characteristics	Total (n = 267)
Clinical Characteristics at Baseline and Treatment over 100 Wks	
Age, mean (SD), yrs	68.6 (13.3)
< 50 yrs (n %)	22 (8.2%)
50–74 yrs (n %)	145 (54.3%)
≥ 75 yrs (n %)	100 (37.5%)
Female (n %)	115 (43.1%)
Duration of CRVO at Diagnosis	
Median (IQR), mos	0.93 (0.37–1.83)
< 1 mo	143 (53.6%)
≥ 1 mo	124 (46.4%)
Baseline BCVA, mean (SD)*	
> 70 letters	28 (10.5%)
55–70 letters	130 (48.7%)
37–54 letters	64 (24.0%)
< 37 letters	45 (16.9%)
Anti-VEGF Agents (Total Participants)	
Ranibizumab	92 (34.5%)
Aflibercept	89 (33.3%)
Bevacizumab	86 (32.2%)
Mean No. of Injections (SD) by 100 Wks	
Ranibizumab	12.8 (5.0)
Aflibercept	10.2 (3.8)
Bevacizumab	12.5 (5.4)
OCT Parameters at Baseline	
Baseline CST, mean (SD) <sup>†</sup>	723.1 (226.9)
Total volume, mean (SD) <sup>‡</sup>	12.96 (2.93)
Proportion with ME N (%)	
Ungradable	1 (0.4%)
Diffuse only	22 (8.2%)
Cystoid only	208 (77.9%)
Mixed	36 (13.5%)
Size of Largest Cyst in Cystoid/Mixed Edema (n = 244)	
Small (< 250 mm)	43/244 (17.6%)
Medium (≥ 250–< 500 mm)	148/244 (60.6%)
Large (≥ 500 mm)	53/244 (21.7%)
Proportion with Subretinal Fluid, N (%)	
Absent	85 (31.8%)
Present	169 (63.3%)
Ungradable	13 (4.9%)
Proportion with VMIA (ERM or VMT) N (%)	
No evidence	233 (94.33%)
Present	14 (5.67%)
Ungradable	20 (7.50%)
Ellipsoid Zone, N (%)	
Intact	87 (32.6%)
Not intact	41 (34.8%)
Ungradable	139 (52.06%)
DRIL, N (%)	
Absent	144 (53.9%)
Presence	118 (44.2%)
Ungradable	5 (1.9%)

(Continued)

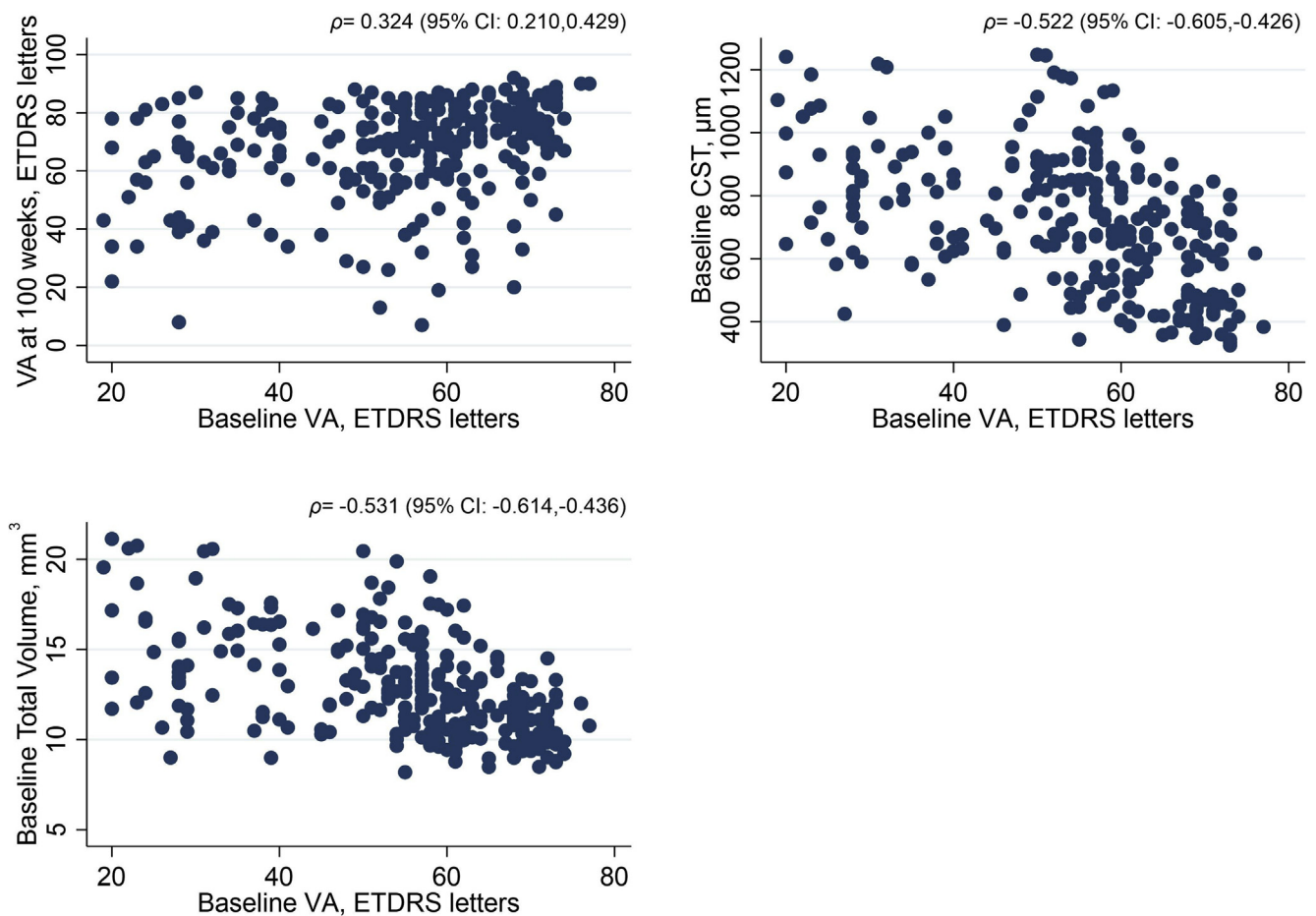
Table 1. (Continued.)

Characteristics	Total (n = 267)
External Limiting Membrane, N (%)	
Intact	112 (42.0%)
Not intact	24 (9.0%)
Ungradable	131 (49.1%)
Hyper-reflective Foci N (%)	
Absent	158 (59.2%)
Present	109 (40.8%)
Ungradable	0
<p>BCVA = best-corrected visual acuity; CRVO = central retinal vein occlusion; CST = central subfield thickness; DRIL = disorganization of retinal inner layers; ELM = external limiting membrane; ERM = epiretinal membrane; EZ = ellipsoid zone; ME = macular edema; SD = standard deviation; SRD = subretinal detachment; VEGF = vascular endothelial growth factor; VMIA = vitreomacular interface abnormalities; VMT = vitreomacular traction.</p> <p>*The BCVA of 4 participants was set to missing because they did not meet eligibility criteria or did not complete 4-m tests despite having baseline BCVA ≤ 19/data entry error from the site.</p> <p><sup>†</sup>The CST data were missing for 3 participants at screening.</p> <p><sup>‡</sup>Total volume data were missing for 5 participants at screening.</p>	

detachment. Those with ungradable or questionable EZ and ELM had a higher than average CST (ELM: mean, 823.6 μm; SD, 173.2 and EZ: mean, 807.4 μm; SD, 180.1), compared with CST in patients with these layers being intact at baseline (ELM: mean, 574 μm; SD, 167.5, EZ: mean, 539 μm; SD, 144). These differences were statistically significant (Table S3, available at [www.opthalmologyretina.org/](http://www.opthalmologyretina.org/)).

### Relationship among Baseline Demographics, BCVA, and VA Outcomes

Results from adjusted analyses restricted to demography, baseline BCVA, and ocular characteristics from screening visit OCT are shown in Table 2. Eyes that presented with lower BCVA at baseline were more likely to see larger gains in final BCVA (both by mean change and improving by 10 or more letters) but less likely to reach a score > 70 letters by 100 weeks. After adjusting for injection type, every 10-letter increase in baseline BCVA was associated with a 3.5 (95% CI, 2.1–4.9) letter increase in absolute BCVA at 100 weeks (P < 0.001), 42% reduction in the odds of improving by ≥ 10 letters (95% CI, 28–54), and 56% increase in the odds of reaching > 70 letters at 100 weeks (95% CI, 29–89). Further adjusting for age and disease duration did not greatly affect the magnitude or precision of the effect of 3.6 (95% CI, 2.3–5.0) letter decrease in final BCVA; 44% (95% CI, 29–55) reduction in odds of improving by ≥ 10 letters; and 62% (95% CI, 32–97) increase in odds of reaching > 70 letters at 100 weeks. Likewise, younger age was associated with a larger magnitude of treatment benefit on BCVA at 100 weeks (every year of older age associated with mean VA gains of –0.33 [95% CI, –0.48 to –0.19] at 100 weeks) in the adjusted analysis. Sex was not associated with VA outcomes at 100 weeks. The adjusted R<sup>2</sup> for change in VA from baseline to 100 weeks was 15.2% for a model adjusting for these identified baseline factors



**Figure 1.** Correlation plots for BCVA, CST, and total macular volume. Scatter plots to show relationships among continuous variables BCVA, CST, and total volume. The 95% confidence interval (CI) for the Spearman’s correlation coefficient is based on Fisher’s transformation. BCVA = best-corrected visual acuity; CST = central subfield thickness; ETDRS = Early Treatment Diabetic Retinopathy Study;  $\rho$  = spearman’s rank correlation coefficient; VA = visual acuity.

(age, disease duration, baseline VA, and treatment arm). For the binary outcomes, adjusted Mcfadden’s  $R^2$  was 7.4% and 6.7%, corresponding to 10-letter gainers and those reaching VA of 70 or more by 100 weeks.

### Relationship between Baseline OCT Characteristics and VA Outcomes

After adjusting for baseline BCVA, age, disease duration, and treatment type, only EZ and ELM were found to be significantly associated with the outcomes (Table 2). The CST and total macular volume both exhibited nonlinear relationships with the log-odds of 10-letter gain (Fig 2). Both variables were better modeled using fp over their linear counterparts, which provided an inadequate model fit ( $P < 0.001$  and  $P = 0.002$ ; LR test for CST and total volume, respectively). As expected, both variables showed similar effect relationships due to high intercorrelation ( $\rho = 0.867$ ; 95% CI, 0.833–0.895). Variables were subsequently remodeled using linear splines, recovering a similar explanatory model (Fig S2, available at [www.opthalmologyretina.org/](http://www.opthalmologyretina.org/)). Furthermore, despite added complexity introduced by the fp terms, model Akaike information criterion remained lower than the linear model. Central subfield thickness of approximately 750  $\mu\text{m}$  indicated

maximum log-odds of BCVA improvement of  $\geq 10$  letters, thereafter seeing a decline in log-odds. On average, CST  $> 900 \mu\text{m}$  showed a 66% reduction in the odds of improving by  $\geq 10$  letters compared with those between 700 and 900  $\mu\text{m}$  (odds ratio [OR], 0.34; 95% CI, 0.14–0.83,  $P = 0.018$ ). The concavity of the curves (initial increase) may be explained by the intercorrelation between baseline BCVA and CST. For instance, eyes with CST that is marginally greater than 320  $\mu\text{m}$  are subject to a ceiling effect of baseline BCVA (Fig 2, bar plot), whereas extremely thick CST is less likely to improve because of the extremity of the CST and therefore poor prognosis. A similar effect was seen in total macular volume, where a value of 8.96  $\text{mm}^3$  (lower 2.5th percentile) had an average predicted probability of 54%, increasing to 73% at 14  $\text{mm}^3$ , indicating maximum odds of improving. Values of total volume  $> 14 \text{mm}^3$  showed a steady decline in the probability of improving  $\geq 10$  letters, decreasing to 28% for an individual with total volume of 19.9  $\text{mm}^3$  (upper 2.5th percentile).

### Multivariable Analysis

Variables EZ, ELM, CST, and total macular volume qualified to enter the multivariable model for predicting a gain of  $\geq 10$  letters; however, after baseline adjustment of the demographic features and

Table 2. Visual Acuity Outcomes at 100 Weeks, by Demographic Variables, Baseline BCVA, and OCT Characteristics

Patient Characteristics	Final BCVA at Week 100*		BCVA Improvement ≥ 10 Letters		Final BCVA > 70 Letters	
	Estimate (95% CI)	P Value	OR (95% CI)	P Value	OR (95% CI)	P Value
Demography and Baseline VA						
Age <sup>†,**,††</sup>						
< 50	Ref	—	Ref	—	Ref	—
50–74	–5.59 (–12.84–1.66)	0.13	0.78 (0.25–2.43)	0.67	0.24 (0.07–0.75)	0.01
≥ 75	–13.09 (–20.57––5.61)	0.001	0.38 (0.12–1.20)	0.10	0.15 (0.04–0.48)	0.001
Age <sup>†,**,††,‡‡</sup> (linear)	–0.33 (–0.48––0.19)	< 0.001	0.97 (0.94–0.99)	0.004	0.96 (0.94–0.98)	0.001
Disease duration <sup>†</sup>	–1.06 (–2.06––0.07)	0.04	0.90 (0.78–1.02)	0.11	0.89 (0.78–1.02)	0.10
Sex <sup>†</sup>						
Male	Ref	—	Ref	—	Ref	—
Female	–1.59 (–5.59–2.42)	0.44	0.98 (0.57–1.66)	0.93	1.08 (0.64–1.80)	0.78
BCVA, Letters <sup>†,**,††,‡‡</sup>						
> 70	Ref	—	Ref	—	Ref	—
55–70	–6.96 (–13.69––0.24)	0.04	2.03 (0.87–4.73)	0.10	0.65 (0.26–1.62)	0.36
37–54	–12.76 (–20.03––5.50)	0.001	4.84 (1.99–11.76) <sup>‡</sup>	0.001	0.24 (0.09–0.63)	0.004
< 37	–17.58 (–25.50––9.65)	< 0.001	—	—	0.14 (0.05–0.41)	< 0.001
BCVA <sup>†,**,††,‡‡</sup> (linear)	0.35 (0.21–0.49)	< 0.001	0.95 (0.93–0.97)	< 0.001	1.05 (1.03–1.07)	< 0.001
OCT Characteristics <sup>§</sup>						
CST, μm <sup>  ,‡‡</sup>				0.003		
Linear/fp terms	–0.01 (–0.02–0.004)	0.18	2 FP terms <sup>¶</sup>	0.001	1.00 (0.999–1.002)	0.91
Volume, mm <sup>3  ,‡‡</sup>	–0.18 (–1.00–0.64)	0.66	2 FP terms <sup>¶</sup>	0.004	1.02 (0.91–1.15)	0.70
				0.002		
SRD <sup>  </sup>						
Absence	Ref	—	Ref	—	Ref	—
Presence	–1.36 (–5.48–2.77)	0.52	0.86 (0.47–1.58)	0.64	1.04 (0.58–1.85)	0.80
DRIL <sup>  </sup>						
Absent	Ref	—	Ref	—	Ref	—
Present	–0.59 (–4.78–3.60)	0.78	0.98 (0.53–1.82)	0.96	1.06 (0.58–1.93)	0.85
EZ <sup>  ,**,††,‡‡</sup>						
Intact	Ref	—	Ref	—	Ref	—
Not intact	–15.90 (–21.47––10.33)	< 0.001	0.18 (0.07–0.47)	< 0.001	0.20 (0.07–0.56)	0.002
Ungradable/questionable	1.34 (–3.02–5.69)	0.55	1.85 (0.94–3.62)	0.08	2.26 (1.14–4.48)	0.02
ELM <sup>  ,**,††,‡‡</sup>						
Intact	Ref	—	Ref	—	Ref	—
Not intact	–10.47 (–17.36––3.58)	0.003	0.32 (0.11–0.92)	0.04	0.57 (0.20–1.63)	0.29
Ungradable/questionable	2.98 (–1.24–7.20)	0.17	1.65 (0.89–3.06)	0.11	2.04 (1.10–3.78)	0.02

AIC = Akaike Information Criterion; BCVA = best-corrected visual acuity; CI = confidence interval; CST = central subfield thickness; DRIL = disorganization of retinal inner layers; ELM = external limiting membrane; EZ = ellipsoid zone; fp = fractional polynomial; LR = likelihood-ratio test; OR = odds ratio; SD = standard deviation; SRD = subretinal detachment; VA = visual acuity.

Statistically significant P values at the 5% threshold (P < 0.05) are italicized.

Fractional polynomial terms:

<sup>¶</sup>CST: Term 1: X-2–50.69 and Term 2: X-3–360.89; fp model AIC = 302 versus linear model AIC = 314.

<sup>¶</sup>Total volume: Term 1 X-2–1.65, Term 2: X-3–2.12; fp model AIC = 306 versus linear model AIC = 313.

The LR test comparing linear and nonlinear models (P < 0.001; LR chi-square = 13.22 for CST and P = 0.002; LR chi-square = 9.75 for total volume from an LR test). Model AIC is interpreted as an out-of-sample prediction error and can be used to compare nested models.

Variables that remained significant after adjustment for total injection number indicated with:

\*\* (continuous BCVA),

†† (final VA > 70 letters), and

‡‡ (BCVA improvement ≥ 10 letters).

\*For baseline VA, the outcome should be interpreted as the final VA at 100 weeks.

†Adjusted for baseline VA and treatment arm.

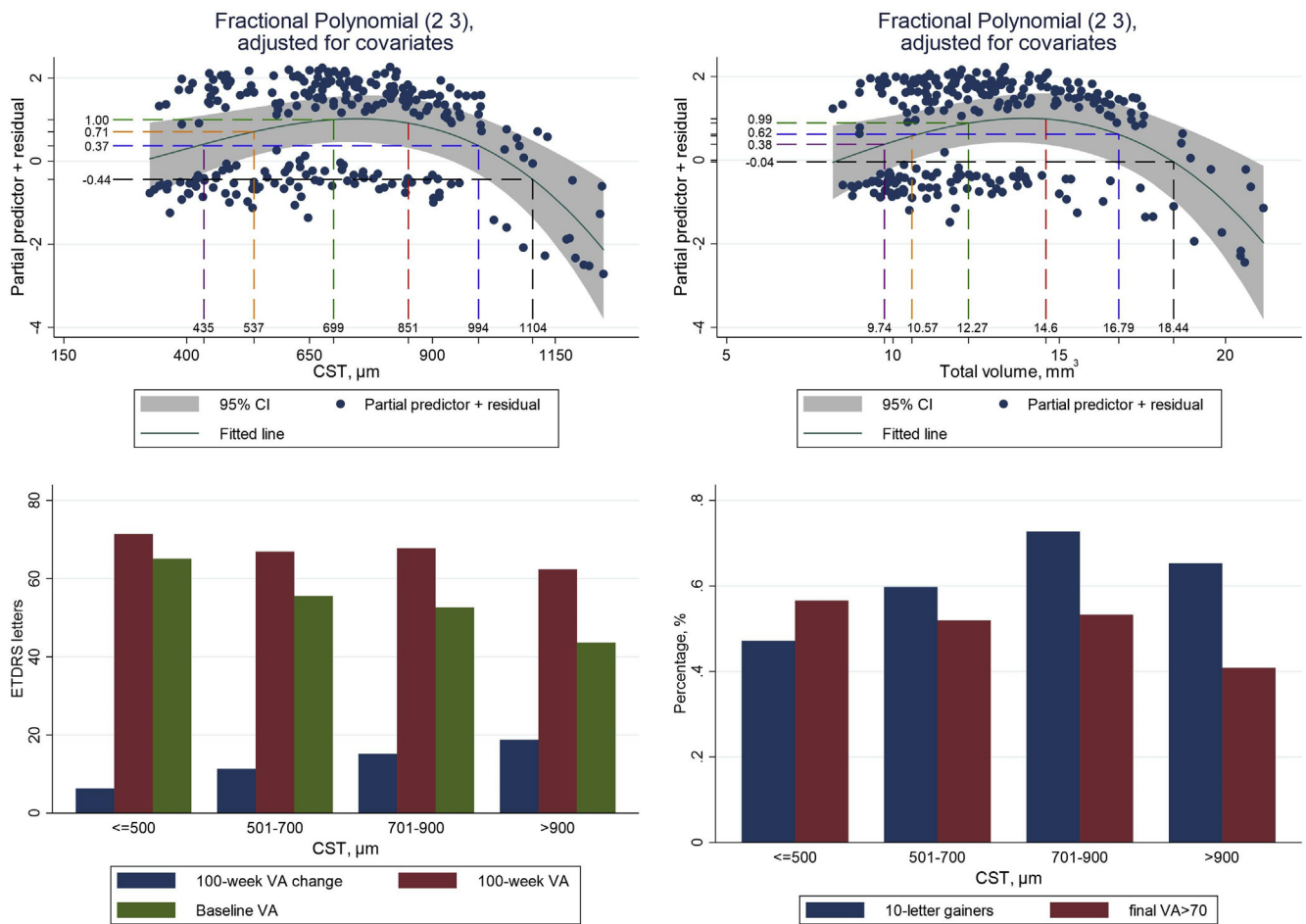
‡Groups 37–54 and < 37 were collapsed for outcome because of low numbers in group < 37 letters that did not improve. One bivariate outlier was identified in VA change (67 letters decrease) after truncating at 3 SD, and 3 further outliers were identified and removed from CST and total volume.

§Showing only variables that were statistically significant at the 10% threshold (P < 0.1).

||Adjusted for baseline VA, age, disease duration, and treatment arm.

treatment, ELM subsequently decreased. Figure 3 summarizes all variables that remained in the final multivariable models. For participants with nonintact EZ, the mean BCVA gains were 15.9 letters less, and 10-letter gains (OR, 0.18; 95% CI, 0.07–0.47) or achieving 70 letters by 100 weeks were less likely (OR, 0.57;

95% CI, 0.2–1.63). For 10-letter gainers after adjusting for EZ, CST and total volume were modeled using fp functions (Fig S3, available at [www.ophtalmologyretina.org/](http://www.ophtalmologyretina.org/)). Age and baseline BCVA remained significantly associated in all models, but in this study disease duration was not found to be independently



**Figure 2.** Effect of CST and total macular volume on visual acuity (VA) outcomes. All (2,3) fractional polynomial (fp) terms represent  $x^2$  and  $x^3$  transformations. **Top:** Component plus residual plots for fp models for CST and total volume adjusting for baseline factors age, disease duration, baseline BCVA, and treatment arm. The x-axis represents the range of values across which the continuous variable was observed, and y-axis shows the log odds for predicting an improvement in VA of  $\geq 10$  letters at 100 weeks. The smooth line represents the fitted curve, the shaded line represents the 95% CI for the fit, and the points represent the residuals. The lines indicate the 10<sup>th</sup> (purple), 25<sup>th</sup> (orange), 50<sup>th</sup> (green), 75<sup>th</sup> (red), 90<sup>th</sup> (blue), and 95<sup>th</sup> (black) percentiles. **Bottom:** Bar plots for different vision outcomes across 4 subgroups of CST for (a) change in VA, final VA, and baseline VA and (b) the proportion of 10-letter gainers and those reaching  $> 70$  letters final VA. BCVA = best-corrected visual acuity; CI = confidence interval; CST = central subfield thickness; ETDRS = Early Treatment Diabetic Retinopathy Study; VA = visual acuity.

related to VA when considering the OCT parameters. In this model, adjusted  $R^2$  for the change in BCVA over 2 years was 27.8% (vs. 15% for a model adjusting for demographics, baseline VA, and drug assignment only). For 10-letter gainers, McFadden's adjusted  $R^2$  increased to 17.4% (vs. 7.4%). For predicting final VA  $> 70$  letters, McFadden's adjusted  $R^2$  increased to 13.2% (vs. 6.7%), where values 20% to 40% indicate good to excellent fit.<sup>16</sup>

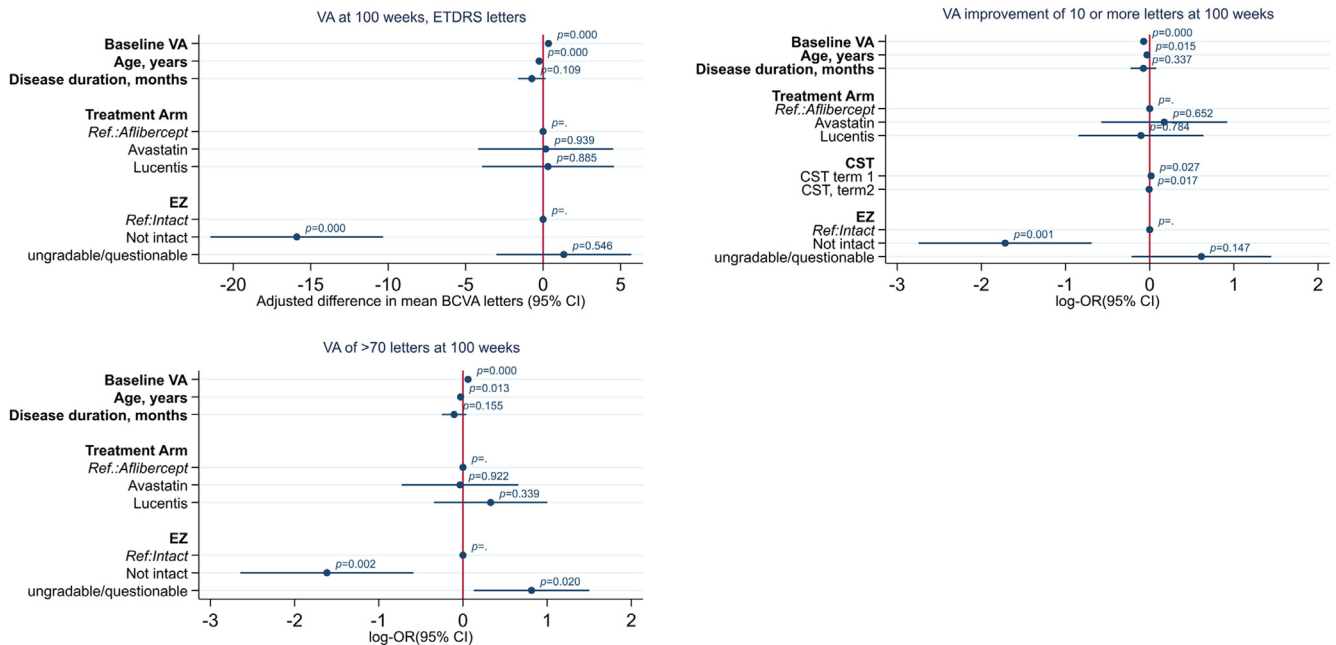
### Week 52 Analysis

For the analysis at week 52, demographic variables and baseline BCVA exhibited similar relationships as week 100 analyses (Table S4, available at [www.opthalmologyretina.org/](http://www.opthalmologyretina.org/)), in which age, disease duration, and baseline VA remained statistically associated with the outcomes after adjusting for treatment arm and baseline VA. Nonlinearity was detected for the continuous variable CST for predicting a gain in BCVA of  $\geq 10$  letters (Fig S4, available at [www.opthalmologyretina.org/](http://www.opthalmologyretina.org/)), but were not

retained in the multivariable model. Total volume did not exhibit a statistically significant linear relationship with the outcome, and no fp power led to an improvement in the model fit (LR test,  $P > 0.05$ ).  $P$  values for EZ and ELM remained statistically significant in the adjusted analysis for the outcome pertaining to BCVA at 52 weeks (Table S5, available at [www.opthalmologyretina.org/](http://www.opthalmologyretina.org/)). Only EZ was related to the outcome of improving by  $\geq 10$  letters, and no morphologic parameter showed a statistically significant association with the outcome of reaching 70 letters or more by week 52 despite adjustment for baseline BCVA, treatment arm, age, and disease duration. Results from the multivariable analysis showing the ocular characteristics indicative of good treatment response are presented in Figure S5 (available at [www.opthalmologyretina.org/](http://www.opthalmologyretina.org/)).

### Sensitivity Analysis

Table S6 (available at [www.opthalmologyretina.org/](http://www.opthalmologyretina.org/)) shows the data separately for participants with ischemic versus nonischemic



**Figure 3.** Forest plots from multivariable analysis of outcomes at week 100. Variables that passed the  $P < 0.1$  threshold in the univariate (adjusted) analysis were subsequently included in the multivariable models (external limiting membrane [ELM], ellipsoid zone [EZ], and CST). Backward elimination was carried out locking in control variables or confounders for precision regardless of statistical significance and setting the variable elimination threshold at  $P < 0.05$ . In all models, ELM was eliminated at the 5% level (not presented). BCVA = best-corrected visual acuity; CI = confidence interval; CST = central subfield thickness; ETDRS = Early Treatment Diabetic Retinopathy Study; VA = visual acuity.

CRVO at baseline. Participants on average had a lower baseline VA, higher baseline CST, higher total volume, and greater gains in BCVA at 100 weeks. By week 52, the proportion achieving greater than 70 letters was higher in the ischemic group (57%) than in the nonischemic group (50%), whereas by 100 weeks a higher proportion was seen in those with nonischemic CRVO at baseline (52% vs. 43%). The proportion gaining 10 or more letters was consistently higher in the ischemic group at both 52 weeks (74%) and 100 weeks (78%). Table S7 (available at [www.opthalmologyretina.org/](http://www.opthalmologyretina.org/)) shows the adjusted analysis restricted to demography, baseline BCVA, and ocular characteristics from screening visit OCT against 100-week VA outcomes after excluding participants with ischemic CRVO at baseline. All variables that were statistically significant from the analysis on the total cohort remain significant at the 1% level despite the reduced sample size. The fp terms (Fig S6, available at [www.opthalmologyretina.org/](http://www.opthalmologyretina.org/)) indicate a similar functional form as observed in the total cohort for the 10-letter gainers at 100 weeks. The nonlinear model compared with the model with linear terms for CST and total volume had a significantly better model fit ( $P < 0.05$ ; LR test for both CST and total volume). Likewise, the analysis using linear splines at 100 weeks (Fig S7, available at [www.opthalmologyretina.org/](http://www.opthalmologyretina.org/)) shows a similar association for both CST and total volume ( $P < 0.05$ ; LR test against linear model for both CST and total volume). Table S8 (available at [www.opthalmologyretina.org/](http://www.opthalmologyretina.org/)) shows the analysis at week 52 and indicates that the associations for OCT parameters remain similar to that of the whole cohort. The nonlinear relationships were weaker, where modeling using fp or spline functions did not lead to a statistically significant improvement in model fit for

both CST and total volume (Fig S8, available at [www.opthalmologyretina.org/](http://www.opthalmologyretina.org/)). In addition, we also show the VA outcomes of ischemic CRVO defined in various ways in the whole LEAVO cohort and in this study sample in Table S9 (available at [www.opthalmologyretina.org/](http://www.opthalmologyretina.org/)).

## Discussion

Our results show the determinants of final visual outcome at 52 and 100 weeks are similar. The predictors included age of patient at presentation of CRVO, baseline BCVA, and a gradable intact EZ. Participants aged  $< 75$  years are more likely to gain BCVA and achieve  $> 70$  letters at 52 weeks and 100 weeks. Although baseline CST and macular volume do not predict BCVA, our results show the relation of baseline CST and BCVA outcome for 10-letter gainers is not linear, and eyes with  $CST \geq 750 \mu m$  and total macular volume  $> 14 \text{ mm}^3$  have a decreasing probability of gaining  $\geq 10$  letters by 100 weeks. These observations persisted when the eyes with ischemic CRVO were excluded from the cohort, suggesting that these predictors also apply to eyes with ischemic CRVO at baseline that meet the LEAVO inclusion criteria and are continuously monitored every 4 to 8 weeks and treated on the basis of strict re-treatment criteria over 100 weeks. We deduced that this nonlinear effect may be due to the ceiling effect of baseline VA seen in participants with the lower extremity of CST, whereas participants with a moderately increased CST present with lower VA and have greater room for improvement and are more likely to gain 10 or more letters by 100 weeks. Those with extremely high baseline CST may

have irreversible structural changes or coexistent ischemia and have a reduced odds of gaining 10 or more letters.

Previous CRVO studies found similar results regarding poor visual prognosis in older individuals.<sup>17,18</sup> The SCORE study evaluated triamcinolone for ME due to CRVO at 12 months, and SCORE2, which treated central and hemiretinal vein occlusion with monthly aflibercept or bevacizumab, showed that younger patients are more likely to gain 15 letters at 6 months.<sup>8,19</sup> The SHORE study analyzed predictors of VA gains after 7 monthly intravitreal ranibizumab injections, and reported younger age is a good predictor of visual gain.<sup>20</sup> These observations suggest that irrespective of treatment type, regimen, or period of follow-up, older age is a poor visual prognostic indicator. The SCORE investigators hypothesized that photoreceptors in younger patients are more resilient to the acute insult of CRVO. Younger age is also associated with better visual prognosis in diabetic ME, further supporting the hypothesis that a young retina more readily withstands the acute and chronic insults of ME.<sup>21</sup>

We did not find duration of CRVO to be a favorable predictor of visual outcome probably because the majority (84%) of the study cohort were diagnosed with CRVO less than 3 months before randomization. The COPERNICUS and GALILEO studies showed that a CRVO diagnosis of 2 months or less had better visual outcomes compared with those diagnosed more than 2 months previously.<sup>22,23</sup>

Patients with lower baseline BCVA are more likely to gain 10 or more letters, but eyes with baseline BCVA < 55 letters are less likely to achieve > 70 letters at 52 or 100 weeks. Baseline BCVA is a known predictor of final visual outcome in several CRVO and diabetic ME studies. The SHORE study looked at time to achieve 20/40 or better or 15-letter gain within 3 months of treatment, whereas SCORE and SCORE2 evaluated predictors of 15-letter gainers at 12 and 6 months, respectively.<sup>24</sup> Baseline BCVA is a predictor of final visual outcome independent of the drug used, treatment regimen followed, VA outcome measure, or study period.

Unlike studies on diabetic ME, quantitative OCT parameters at baseline do influence final BCVA, with a CST of > 900  $\mu\text{m}$  less likely to be associated with gains  $\geq$  10 letters compared with CST  $\leq$  900  $\mu\text{m}$ . This difference from diabetic ME is likely due to the more severe acute edema in CRVO at presentation. Although these eyes are also likely

to present with poor vision, the finding that the potential for visual improvement of 10 or more letters in these eyes is limited suggests some element of irreversible damage. These eyes may indicate ischemic CRVO, although the RAVE study showed that visual prognosis can be improved with anti-VEGF in preproliferative ischemic CRVO.<sup>25</sup>

A definite intact EZ layer at baseline is a predictor of good final visual outcomes, and a definite loss of baseline EZ integrity is a poor prognostic indicator. However, if the EZ layer is ungradable or questionable at baseline, it carries no predictive value.

Strengths of this study include 100-week on protocol-based follow-up, and the predictors were adjusted for the type of anti-VEGF agents and the number of injections received. We also studied 10-letter gainers and demonstrated that a baseline CST of > 900  $\mu\text{m}$  is a poor prognostic indicator.

### Study Limitations

A study limitation was that baseline angiographic macular nonperfusion status was not assessed. However, we found that disorganization of the inner retinal layers, a surrogate marker of nonperfusion, is not a predictor. A substantial proportion of eyes with CRVO-related ME are anti-VEGF dependent beyond 2 years, and it is unknown if these predictors can be applied beyond 2 years of treatment because the LEAVO study final visit was at 100 weeks. The RAVE study shows that most eyes with ischemic CRVO deteriorate as soon as anti-VEGF therapy is withdrawn,<sup>25</sup> and so their course after stopping anti-VEGF therapy is different than that of eyes with nonischemic CRVO.

### Conclusions

At presentation of ME due to CRVO, older age is a predictor of poor visual outcome, and lower BCVA predicts 10-letter gainers and higher gains in BCVA, although it is a poor predictor of achieving > 70 BCVA letters. An intact subfoveal EZ predicts a BCVA letter score > 70 at 100 weeks, whereas CST > 900  $\mu\text{m}$  is a poor prognostic indicator. This information is important to share with patients to determine appropriate and individualized anti-VEGF management plans up to 100 weeks.

### Footnotes and Disclosures

Originally received: October 2, 2020.

Final revision: February 8, 2021.

Accepted: February 11, 2021.

Available online: February 19, 2021. Manuscript no. ORET-D-20-00788.

<sup>1</sup> NIHR Moorfields Biomedical Research Centre, London, United Kingdom.

<sup>2</sup> UCL Institute of Ophthalmology, London, United Kingdom.

<sup>3</sup> NetWOrC UK Reading Centre, Queen's University of Belfast, Belfast, United Kingdom.

P.S. and S.G. contributed equally as first authors.

This study was funded by the United Kingdom Health Technology Assessment Grant from the National Institute for Health Research (NIHR). The research was supported by the NIHR Biomedical Research Centre at Moorfields Eye Hospital National Health Service Foundation Trust, the University College London Institute of Ophthalmology, and the United Kingdom Clinical Research Collaboration—registered King's Clinical Trials Unit at King's Health Partners, London, United Kingdom, which is partly funded by the NIHR Biomedical Research Centre for Mental Health at South London and Maudsley, the National Health Service Foundation Trust and King's College London, and the NIHR Clinical Research Network. The funding sources had no role in the design and conduct of the study; collection, management, analysis, and interpretation of the data;



preparation, review, or approval of the manuscript; and decision to submit the manuscript for publication.

#### Disclosure(s):

All authors have completed and submitted the ICMJE disclosures form.

The author(s) have made the following disclosure(s): P.H. Research grants – Novartis Allergan, Bayer; travel grants – Novartis Allergan, Bayer; speaker fees – Novartis Allergan, Bayer; attended advisory board meetings for Novartis, Bayer, and Allergan.

S.S.: Research grants –Novartis, Bayer, Allergan, Roche, Boehringer Ingelheim, Optos Plc; travel grants – Novartis, Bayer; speaker fees – Novartis, Bayer, Optos Plc; attended advisory board meetings for Novartis, Bayer, Allergan, Roche, Boehringer Ingelheim, Optos Plc, Oxurion, Opthea, Apellis, Oculis, and Heidelberg Engineering.

**HUMAN SUBJECTS:** Human subjects were included in this study. The human ethics committee at the National Research Ethics Service Committee London - London Bridge approved the study. All research adhered to the tenets of the Declaration of Helsinki. All participants provided informed consent.

No animal subjects were included in this study.

#### Author Contributions:

Conception and design: Sen, Gurudas, Sivaprasad, Hykin

Data collection: Sen, Ramu, Patrao, Chandra, Rasheed, Nicholson, Peto, Sivaprasad, Hykin

Analysis and interpretation: Gurudas, Sivaprasad, Hykin

Obtained funding: N/A

Overall responsibility: Sen, Gurudas, Ramu, Patrao, Chandra, Rasheed, Nicholson, Peto, Sivaprasad, Hykin

#### Abbreviations and Acronyms:

**BCVA** = best-corrected visual acuity; **CI** = confidence interval; **CRVO** = central retinal vein occlusion; **CST** = central subfield thickness; **ELM** = external limiting membrane; **ERM** = epiretinal membrane; **EZ** = ellipsoid zone; **fp** = fractional polynomials; **LR** = likelihood ratio; **ME** = macular edema; **OR** = odds ratio; **SD** = standard deviation; **VA** = visual acuity; **VEGF** = vascular endothelial growth factor.

#### Keywords:

LEAVO, BCVA, VEGF, Predictors.

#### Correspondence:

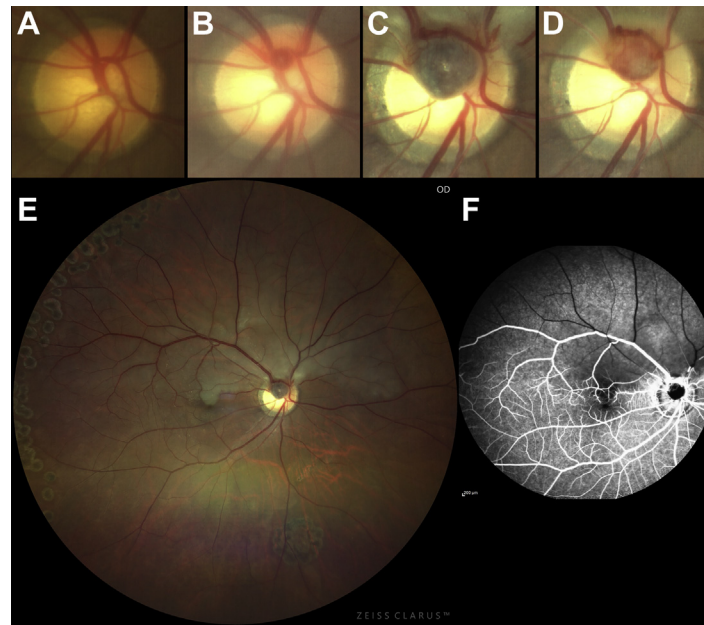
Sobha Sivaprasad, FRCOphth, Moorfields Eye Hospital NHS Foundation Trust, 162 City Road, London EC1V 2PD, UK. E-mail: [Sobha.sivaprasad@nhs.net](mailto:Sobha.sivaprasad@nhs.net)

## References

- Evaluation of grid pattern photocoagulation for macular edema in central vein occlusion. The Central Vein Occlusion Study Group M report. *Ophthalmology*. 1995;102:1425–1433.
- Catier A, Tadayoni R, Paques M, et al. Characterization of macular edema from various etiologies by optical coherence tomography. *Am J Ophthalmol*. 2005;140:200–206.
- Mimouni M, Segev O, Dori D, et al. Disorganization of the retinal inner layers as a predictor of visual acuity in eyes with macular edema secondary to vein occlusion. *Am J Ophthalmol*. 2017;182:160–167.
- Framme C, Schweizer P, Imesch M, et al. Behavior of SD-OCT-detected hyperreflective foci in the retina of anti-VEGF-treated patients with diabetic macular edema. *Invest Ophthalmol Vis Sci*. 2012;53:5814–5818.
- Duker JS, Kaiser PK, Binder S, et al. The International Vitreomacular Traction Study Group classification of vitreomacular adhesion, traction, and macular hole. *Ophthalmology*. 2013;120:2611–2619.
- Groneberg T, Trattinig JS, Feucht N, et al. [Morphologic patterns on spectral-domain optical coherence tomography (SD-OCT) as a prognostic indicator in treatment of macular edema due to retinal vein occlusion]. *Klin Monbl Augenheilkd*. 2016;233:1056–1062.
- Panozzo G, Cicinelli MV, Augustin AJ, et al. An optical coherence tomography-based grading of diabetic maculopathy proposed by an international expert panel: The European School for Advanced Studies in Ophthalmology classification. *Eur J Ophthalmol*. 2020;30:8–18.
- Scott IU, VanVeldhuisen PC, Ip MS, et al. Baseline factors associated with 6-month visual acuity and retinal thickness outcomes in patients with macular edema secondary to central retinal vein occlusion or hemiretinal vein occlusion: SCORE2 Study Report 4. *JAMA Ophthalmol*. 2017;135:639–649.
- Campochiaro PA, Wykoff CC, Singer M, et al. Monthly versus as-needed ranibizumab injections in patients with retinal vein occlusion: the SHORE study. *Ophthalmology*. 2014;121:2432–2442.
- Hykin P, Prevost AT, Vasconcelos JC, et al. Clinical effectiveness of intravitreal therapy with ranibizumab vs aflibercept vs bevacizumab for macular edema secondary to central retinal vein occlusion: a randomized clinical trial. *JAMA Ophthalmol*. 2019;137:1256–1264.
- Hykin P, Sivaprasad S, Prevost AT, et al. Protocol 14PRT/06545: a multicentre phase 3 double-masked randomised controlled non-inferiority trial comparing the clinical and cost effectiveness of intravitreal therapy with ranibizumab (Lucentis) vs aflibercept (Eylea) vs bevacizumab (Avastin) for macular edema due to central retinal vein occlusion (LEAVO trial)—ISRCTN: 13623634. *Lancet*. 2019;137:1256–1264.
- White IR, Horton NJ, Carpenter J, et al. Strategy for intention to treat analysis in randomised trials with missing outcome data. *BMJ*. 2011;342:d40.
- Royston P, Ambler G, Sauerbrei W. The use of fractional polynomials to model continuous risk variables in epidemiology. *Int J Epidemiol*. 1999;28:964–974.
- Sauerbrei W, Royston P. Building multivariable prognostic and diagnostic models: transformation of the predictors by using fractional polynomials. *J R Stat Soc Ser A Stat Soc*. 1999;162:71–94.
- Stata Statistical Software. Release 16 [computer program]. College Station, TX: StataCorp LLC; 2019.
- McFadden D. Conditional logit analysis of qualitative choice behavior. In: Zarembka P, ed. *Frontiers in Econometrics*. Academic Press; 1973:105–142.
- Brogan K, Precup M, Rodger A, et al. Pre-treatment clinical features in central retinal vein occlusion that predict visual outcome following intravitreal ranibizumab. *BMC Ophthalmol*. 2018;18:37.
- Ach T, Hoeh AE, Schaal KB, et al. Predictive factors for changes in macular edema in intravitreal bevacizumab therapy of retinal vein occlusion. *Graefes Arch Clin Exp Ophthalmol*. 2010;248:155–159.
- Scott IU, VanVeldhuisen PC, Oden NL, et al. Baseline predictors of visual acuity and retinal thickness outcomes in

- patients with retinal vein occlusion: Standard Care Versus Corticosteroid for Retinal Vein Occlusion Study report 10. *Ophthalmology*. 2011;118:345–352.
20. Yiu G, Welch RJ, Wang Y, et al. Spectral-domain OCT predictors of visual outcomes after ranibizumab treatment for macular edema resulting from retinal vein occlusion. *Ophthalmol Retina*. 2020;4:67–76.
  21. Chen YP, Wu AL, Chuang CC, Chen SN. Factors influencing clinical outcomes in patients with diabetic macular edema treated with intravitreal ranibizumab: comparison between responder and non-responder cases. *Sci Rep*. 2019;9:10952.
  22. Boyer D, Heier J, Brown DM, et al. Vascular endothelial growth factor Trap-Eye for macular edema secondary to central retinal vein occlusion: six-month results of the phase 3 COPERNICUS study. *Ophthalmology*. 2012;119:1024–1032.
  23. Korobelnik J-F, Holz FG, Roeder J, et al. Intravitreal aflibercept injection for macular edema resulting from central retinal vein occlusion: one-year results of the phase 3 GALILEO study. *Ophthalmology*. 2014;121:202–208.
  24. Lloyd Clark W, Liu M, Kitchens J, et al. Baseline characteristics associated with early visual acuity gains after ranibizumab treatment for retinal vein occlusion. *BMC Ophthalmol*. 2019;19:11.
  25. Brown DM, Wyckoff CC, Wong TP, et al. Ranibizumab in preproliferative (ischemic) central retinal vein occlusion: The Rubeosis Anti-VEGF (RAVE) trial. *Retina*. 2014;34:1728–1735.

## Pictures & Perspectives



### Branch Retinal Artery Occlusion with Prepapillary Macroaneurysm Enlargement

A 59-year-old man underwent a successful 25-gauge pars plana vitrectomy with 20% sulfur hexafluoride–air mixture tamponade for rhegmatogenous retinal detachment of the right eye. A prepapillary retinal arterial macroaneurysm was detected during surgery, which was not present 3 years prior (A, B). Six months later, the patient experienced an inferior visual field loss. The retinal arterial macroaneurysm had enlarged substantially, and a superior branch retinal artery occlusion was noted (C, E). The aneurysm did not fill with dye on fluorescein angiography (FA) (F), suggesting an intraluminal thrombus causing the artery occlusion. Two weeks later, the macroaneurysm had reduced slightly in size (D).

SHINJI KAKIHARA, MD  
 TAIHEI KURENUMA, MD  
 TOSHINORI MURATA, MD, PhD

Department of Ophthalmology, Shinshu University School of Medicine, 3-1-1 Asahi, Matsumoto, Nagano, Japan