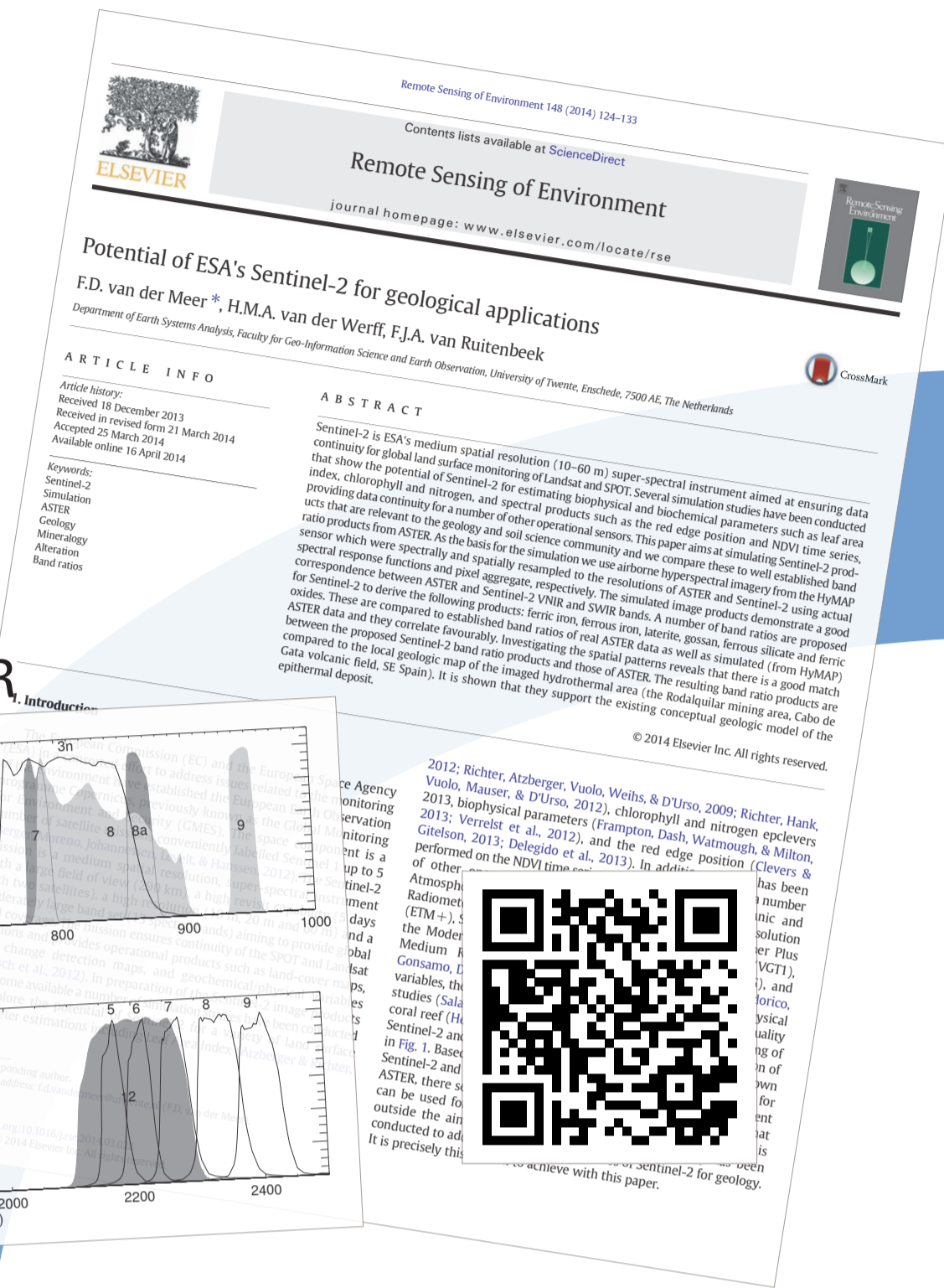
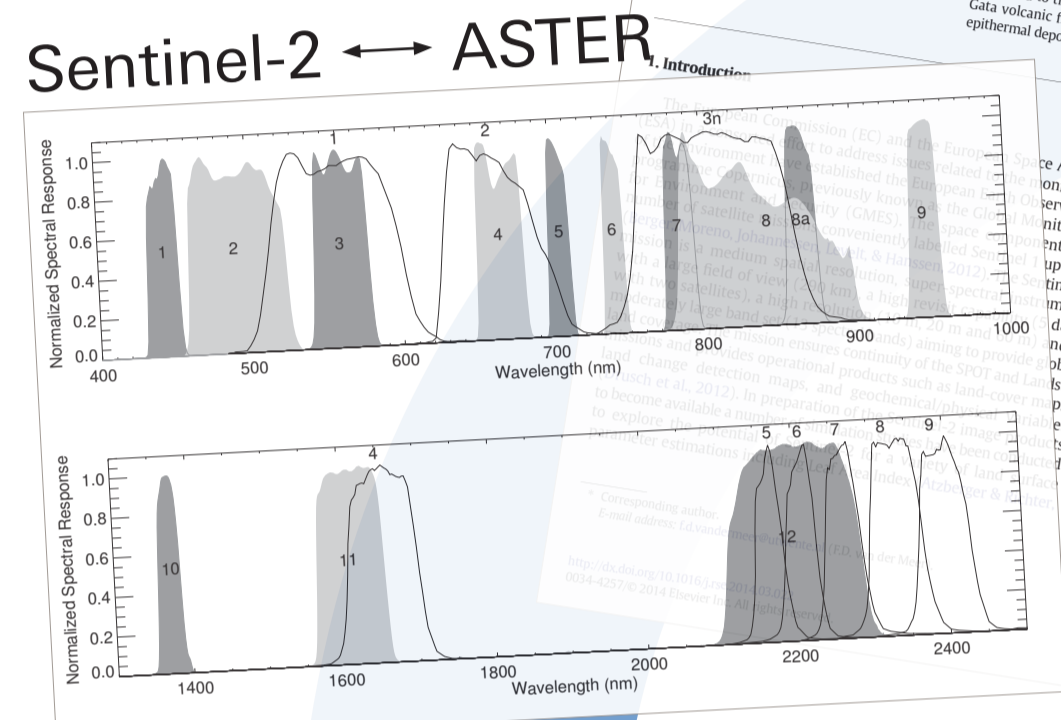
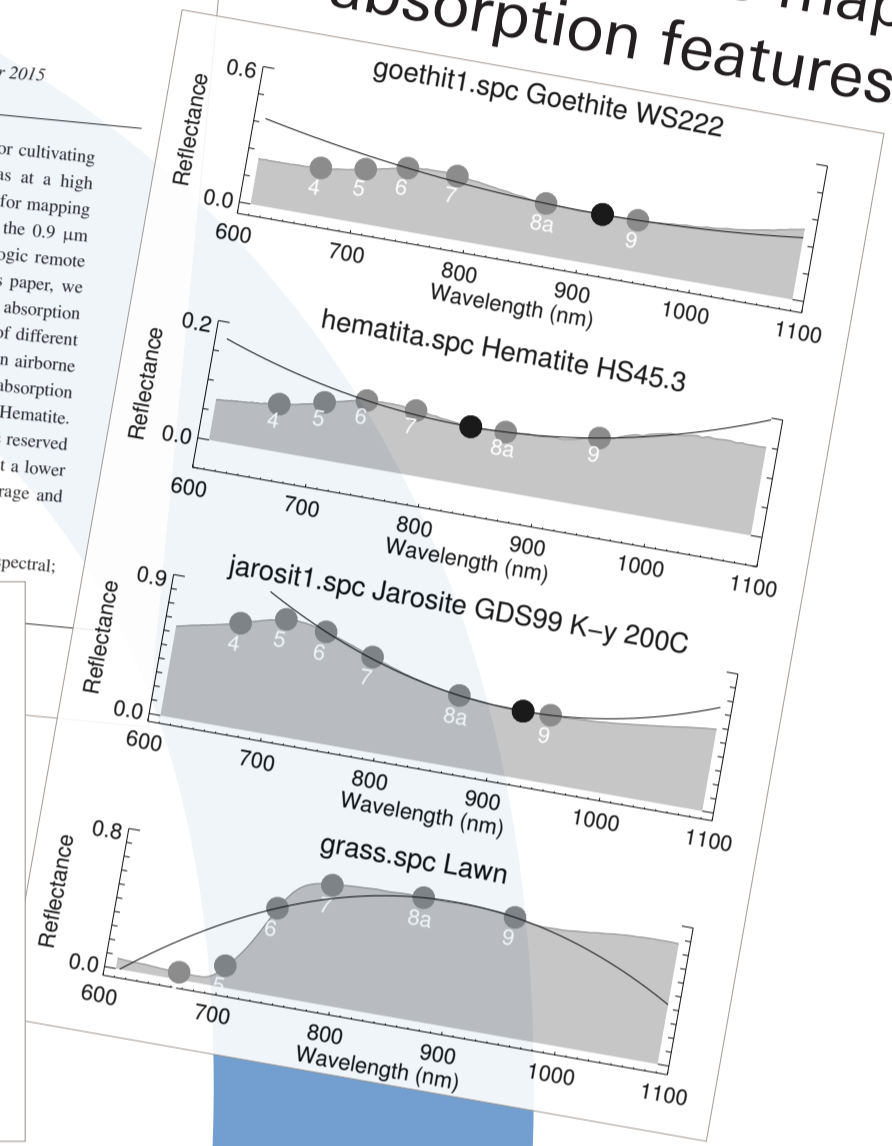


Sentinel-2 for mapping iron oxide minerals on a continental scale

Harald van der Werff and Rob Hewson
University of Twente



Parabola fitting technique to map absorption features



Problem

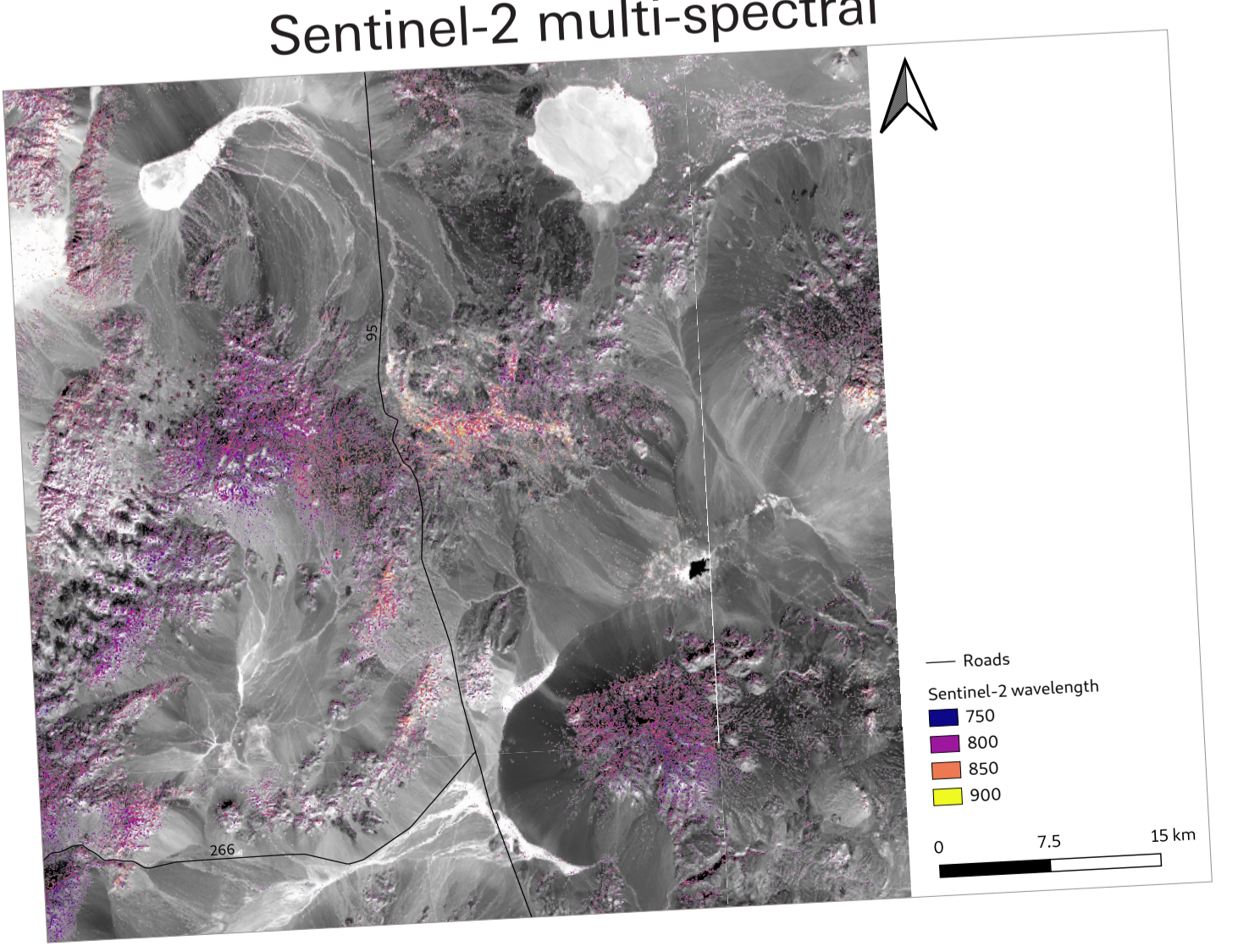
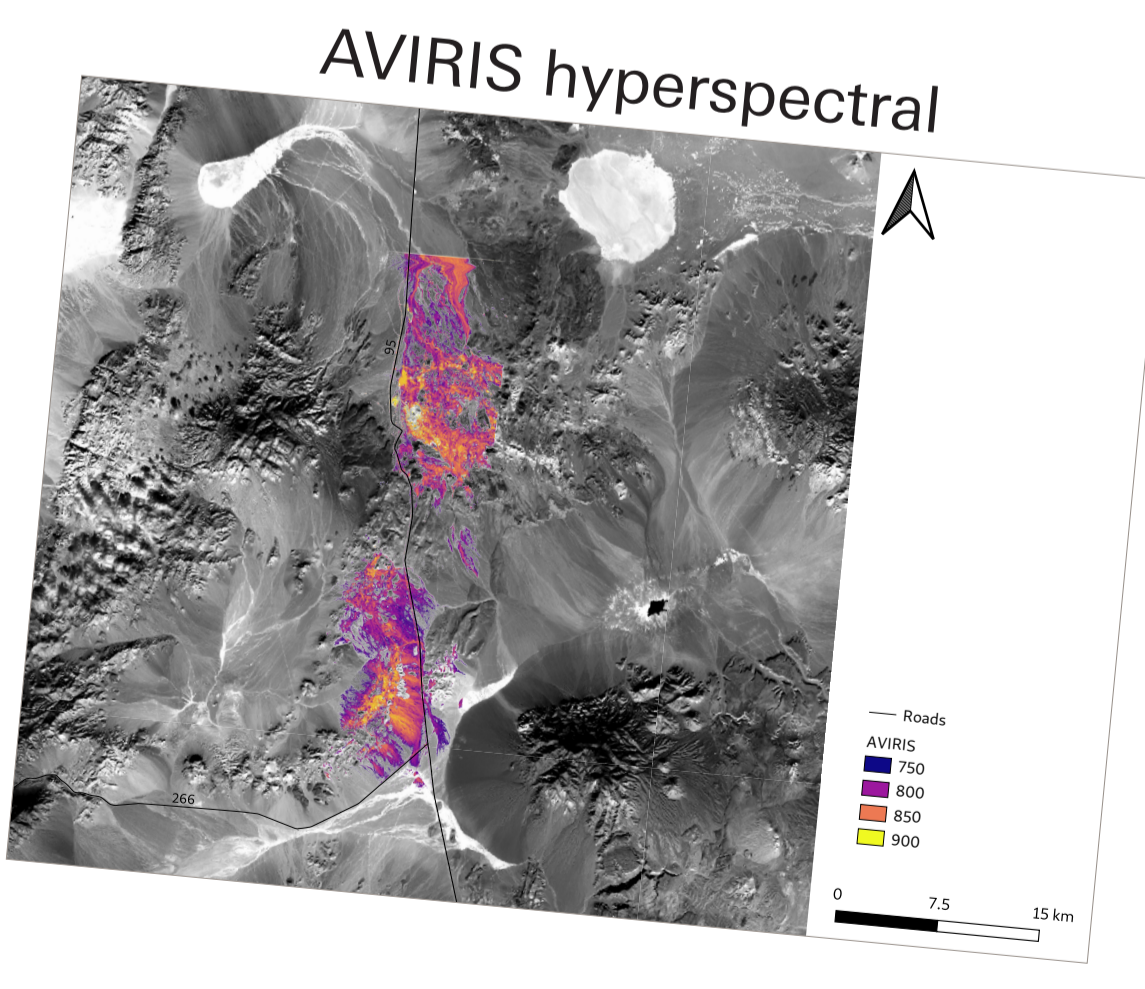
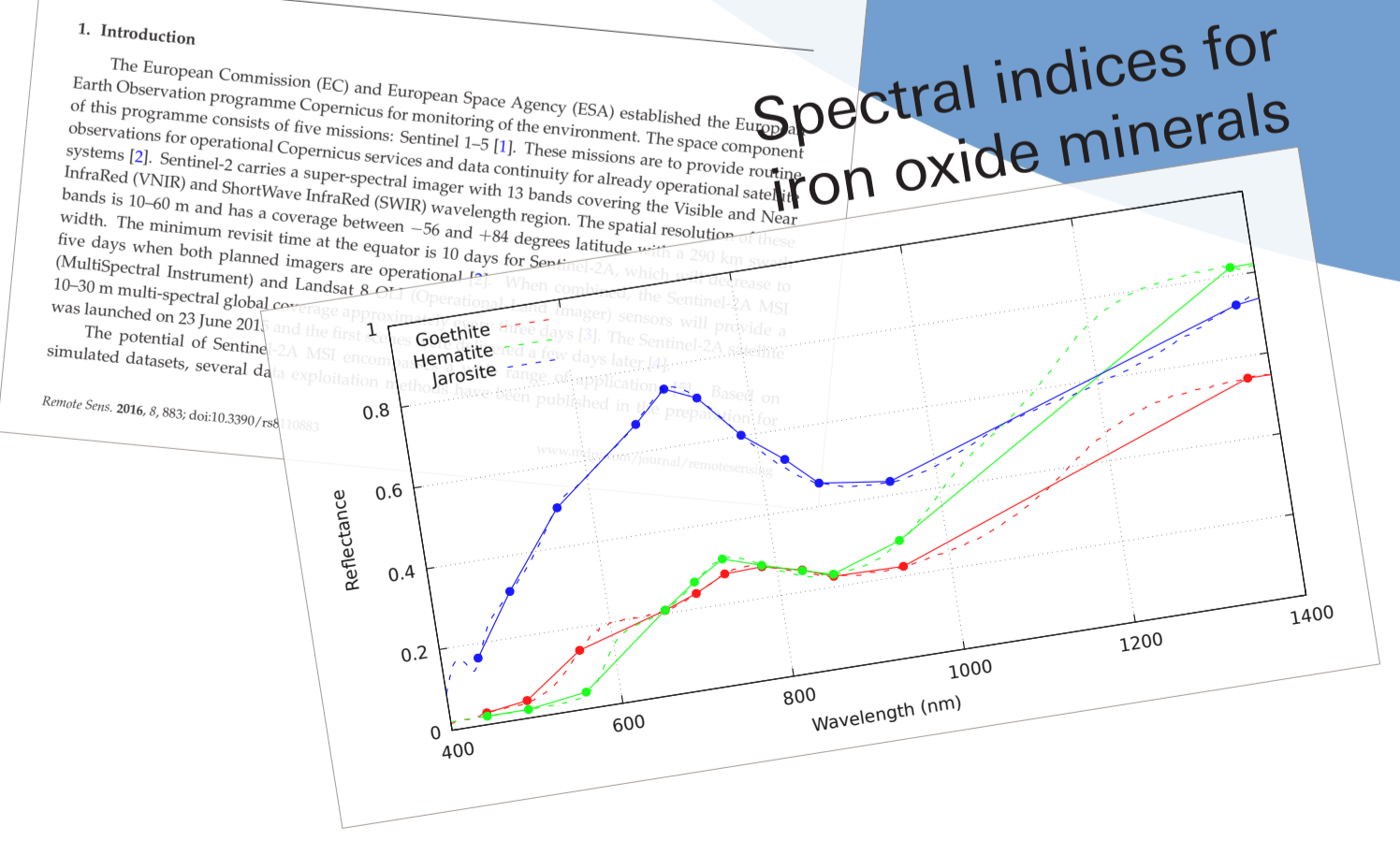
Iron is the 4th most common mineral in the earth crust and is essential for plant growth. Remote sensing is the only suitable tool for surveying iron repeatedly and worldwide.

Opportunity

Sentinel-2 has multiple bands that allow mapping of iron oxide minerals.

Results

Sentinel-2 mineral maps are not as spatially contiguous as e.g. hyperspectral data from AVIRIS, but there is potential to map important Minerals such as hematite, goethite and jarosite.



Challenge

extent to continental-scale and validate results.