

Rayleigh–Taylor instability by segregation in an evaporating multicomponent microdroplet

Yaxing Li¹, Christian Diddens^{1,2}, Tim Segers^{1,2}, Herman Wijshoff^{2,3},
Michel Verluis¹ and Detlef Lohse^{1,4,†}

¹Physics of Fluids Group, Department of Science and Technology, Mesa+ Institute, Max Planck Center for Complex Fluid Dynamics and J. M. Burgers Centre for Fluid Dynamics, University of Twente, P.O. Box 217, 7500 AE Enschede, The Netherlands

²Department of Mechanical Engineering, Eindhoven University of Technology, P.O. Box 513, 5600 MB Eindhoven, The Netherlands

³Canon Production Printing Netherlands B.V., 5900 MA Venlo, The Netherlands

⁴Max Planck Institute for Dynamics and Self-Organization, 37077 Göttingen, Germany

(Received 17 December 2019; revised 25 May 2020; accepted 30 May 2020)

The evaporation of multicomponent droplets is relevant to various applications but challenging to study due to the complex physicochemical dynamics. Recently, Li *et al.* (*Phys. Rev. Lett.*, vol. 120, 2018, 224501) reported evaporation-triggered segregation in 1,2-hexanediol–water binary droplets. In this present work, we added 0.5 wt% silicone oil to the 1,2-hexanediol–water binary solution. This minute silicone oil concentration dramatically modifies the evaporation process, as it triggers an early extraction of the 1,2-hexanediol from the mixture. Surprisingly, we observe that the segregation of 1,2-hexanediol forms plumes, rising up from the rim of the sessile droplet towards the apex during droplet evaporation. By orientating the droplet upside down, i.e. by studying a pendent droplet, the absence of the plumes indicates that the flow structure is induced by buoyancy, which drives a Rayleigh–Taylor instability (i.e. driven by density differences and gravitational acceleration). From micro particle image velocimetry measurement, we further prove that the segregation of the non-volatile component (1,2-hexanediol) hinders the evaporation near the contact line, which leads to a suppression of the Marangoni flow in this region. Hence, on long time scales, gravitational effects, rather than Marangoni flows, play the dominant role in the flow structure. We compare the measurement of the evaporation rate with the diffusion model of Popov (*Phys. Rev.*, vol. 71, 2005, 036313), coupled with Raoult's law and the activity coefficient. This comparison indeed confirms that the silicone-oil-triggered segregation of the non-volatile 1,2-hexanediol significantly delays the evaporation. With an extended diffusion model, in which the influence of the segregation has been implemented, the evaporation can be well described.

Key words: condensation/evaporation, buoyancy-driven instability, drops

† Email address for correspondence: d.lohse@utwente.nl

1. Introduction

Evaporation of sessile droplets has attracted a lot of attention over the past decades due to its ubiquitousness and huge relevance for various applications, such as inkjet printing (Park & Moon 2006), surface patterning (Kuang, Wang & Song 2014) and microfabrication (Kong *et al.* 2014), among others. In particular, the pioneering work of Deegan *et al.* (1997), unveiling the mystery of the so-called coffee-stain effect, has inspired many scientific studies on evaporating droplets over the past 20 years.

While the evaporation of single-component droplets is relatively well understood (Hu & Larson 2002; Popov 2005; Ristenpart *et al.* 2007; Cazabat & Guéna 2010; Gelderblom *et al.* 2011; Marin *et al.* 2011; Lohse & Zhang 2015; Chong *et al.* 2020), multicomponent droplets show far more complex dynamics during the drying process. This is due to the complicated coupling of the mutual interactions between species (Brenn *et al.* 2007; Chu & Prosperetti 2016; Diddens *et al.* 2017) and the resulting flow structures (Kim *et al.* 2016; Karpitschka, Liebig & Riegler 2017; Marin *et al.* 2019). Essentially, the selective evaporation of each component is the reason underlying the complexity: the preferred evaporation of one component as compared to the other(s) can result in inhomogeneous liquid distributions. Christy, Hamamoto & Sefiane (2011) first reported the sequential flow transitions in an evaporating ethanol–water binary droplet, which showed an evaporation-induced Marangoni instability in the early life stage. Many subsequent studies (Bennacer & Sefiane 2014; Zhong & Duan 2016; Diddens *et al.* 2017) show that the solutal Marangoni stress driven by the surface tension gradient dominates the flow structure in evaporating multicomponent microdroplets. Very recently, Edwards *et al.* (2018) and Li *et al.* (2019) also found gravity-driven flows in different binary microdroplet systems, which are triggered by the density gradients from the selective evaporation. This is the first evidence that buoyancy-driven Rayleigh convection can overcome Marangoni flow in controlling the flow structure in such evaporating liquid-mixture droplets with Bond number $Bo \ll 1$.

For a specific category of multicomponent systems with a metastable phase regime, the phenomena are even more intriguing and complex. Tan *et al.* (2016, 2017, 2019b) systematically studied a ternary ‘ouzo’ system, which involves not only complex flow behaviours, but, remarkably, multiple phase transitions, i.e. oil microdroplet nucleation and phase separation. Additionally, in a dissolution system, the interaction between host liquid and droplet liquids can also lead to segregation of the components inside the droplet (Dietrich *et al.* 2017; Tan *et al.* 2019a). Recently, Li *et al.* (2018) reported an unexpected segregation triggered by selective evaporation within a miscible 1,2-hexanediol–water binary droplet, in which 1,2-hexanediol is almost non-volatile compared to water. The insufficient replenishment of water from the droplet interior towards the contact line by the weak convection inside the droplet causes the local accumulation of 1,2-hexanediol in the contact line region, which eventually leads to segregation (Karpitschka 2018; Kim & Stone 2018).

In the current work, we added a small amount (0.5 wt%) of silicone oil to the 1,2-hexanediol–water binary solution, which forms oil–water microemulsions in the mixture system (Alany *et al.* 2000), aiming to utilize silicone oil to trigger the extraction of 1,2-hexanediol. Surprisingly, we observed the plumes of separated 1,2-hexanediol arising along the droplet surface originating from the rim, which resemble those shapes emerging in a Rayleigh–Taylor instability (Rayleigh 1882; Taylor 1950). To understand the mechanism of the plume formation and the evaporation behaviour of this multicomponent droplet, we studied the drying system experimentally and theoretically.

The paper is organized as follows. In § 2, we introduce the employed experimental methods. In § 3, the experimental results and our interpretations thereof are presented. We

then apply multicomponent-diffusion models to the experimentally analysed cases (§ 4). The paper ends with a summary and an outlook for future work (§ 5).

2. Experimental methods

2.1. Solution and substrate

The droplet system we used consisted of Milli-Q water (Reference A+, Merck Millipore, 25 °C), 1,2-hexanediol (Sigma-Aldrich, $\geq 98\%$) and silicone oil (Sigma-Aldrich, viscosity 1000 cSt). First, 10 wt % of 1,2-hexanediol aqueous solution was prepared and then 0.5 wt % of silicone oil was added. For this we mix 30 mg silicone oil with 5970 mg 1,2-hexanediol aqueous solution in a glass container and sonicate it for 10 min. We performed evaporation experiments on a hydrophobized glass slide coated by octadecyltrichlorosilane (OTS, Sigma-Aldrich, $> 90\%$) (Peng *et al.* 2014). Before usage, the substrates were cleaned sequentially by 15 min sonication in 99.8 % ethanol and 5 min in Milli-Q water, and subsequently dried with compressed N₂ flow for 30 s. The droplet in each experiment was deposited by a glass syringe with a full metal needle (Hamilton, 10 μ l, Model 701 NWG SYR, Cemented NDL).

2.2. Confocal microscopy

Confocal microscopy was employed to visualize the distribution of water and 1,2-hexanediol within the mixture droplet. The observations were carried out by using an inverted Nikon A1 confocal laser scanning microscope system (Nikon Corporation, Tokyo, Japan) with a 10 \times dry objective (Nikon, Plan Fluor 10 \times /0.30, OFN25, DIC, L/N1). The droplet was labelled with two different dyes, i.e. Nile Red and Dextran. Nile Red is a lipophilic dye that dissolves only in 1,2-hexanediol and was excited by a laser at a wavelength of 561 nm, whereas Dextran preferentially dissolves in water and was excited simultaneously by a laser at a wavelength of 488 nm. Three-dimensional images were obtained by reconstruction from a series of consecutive Z-stack images scanned in the direction from the substrate to the top of the droplet. The scan started as soon as the droplet was deposited on the glass substrate. Operating in Galvano mode, the scan rate for the two-dimensional images was one frame per second (f.p.s.), while each Z-stack scan loop for three-dimensional images took approximately 30 s to complete. This time scale is much smaller than that of evaporation, such that the variation of the flow pattern within the droplet during the scans was negligible.

2.3. Micro particle image velocimetry

For flow visualization, we performed micro particle image velocimetry (μ PIV) by adding fluorescent particles (Fluoro-Max; red fluorescent polymer microspheres, Ex/Em 530 nm/607 nm, diameter 0.52 μ m) to the working fluids at a concentration of 2×10^{-2} vol %. The μ PIV measurements were implemented on the same confocal microscope with a 10 \times dry objective (Nikon, Plan Fluor 10 \times /0.30, OFN25, DIC, L/N1). The particles were excited by a laser at a wavelength of 561 nm and the fluorescent signals were captured at a frame rate of 25 f.p.s. The droplet was illuminated from the bottom and the fluorescent signal was also captured by the objective from the bottom.

2.4. Geometrical measurement

The evaporation process was recorded by a charge-coupled device (CCD) camera (MQ013MG-E2, XiQ) coupled to a microscope (12 \times Ultrazoom, NAVITAR), which was

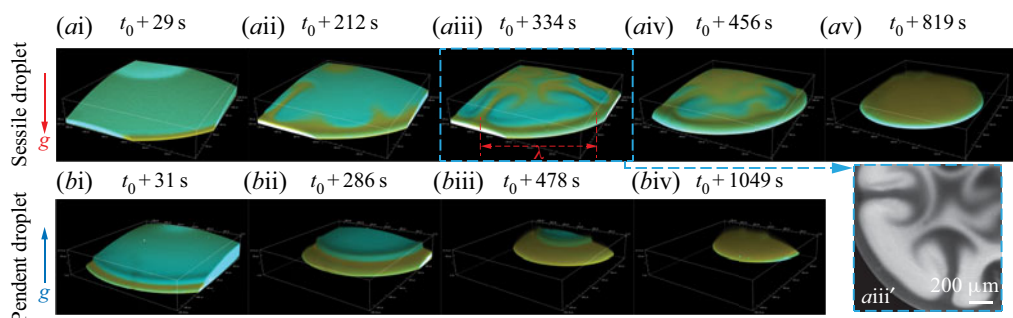


FIGURE 1. Confocal images of evaporation behaviours for both sessile (*ai–av*) and pendent (*bi–biv*) droplets in a semi-side view taken at different time instants. The confocal microscope scanned the rectangular box with the volume $1225 \mu\text{m} \times 1280 \mu\text{m} \times 250 \mu\text{m}$. (*ai, bi*) For both droplets, when the evaporation began, the 1,2-hexanediol separated at the contact line and formed a ring-like pattern. (*a ii–a iii*) In the sessile droplet, through the growth of the segregation, the separated 1,2-hexanediol rose up with plumes. (*a iii'*) Top view of the droplet at $t_0 + 334 \text{ s}$; this is transformed into a binary image to increase the contrast of colours. (*a iv*) The plumes merged with each other at the apex of the droplet. (*a v*) Eventually, 1,2-hexanediol fully covered the surface and stopped the evaporation. (*b ii–b iii*) In the pendent droplet, the segregation of 1,2-hexanediol expanded with the ring-like shape. (*b iv*) Once the separated 1,2-hexanediol occupied the entire surface area, the evaporation stopped.

illuminated by a light-emitting diode (LED) light (MWWHL4 Warm White Mounted LED, THORLABS) from the opposite side of the droplet. In the experiments, droplets evaporated into air under stable laboratory conditions. The relative humidity RH and the ambient temperature T were monitored in each measurement, which were $45 \% \pm 3 \%$ and $22 \pm 1^\circ\text{C}$, respectively.

3. Rayleigh–Taylor instability arising from segregation

3.1. Experimental observations and interpretations

Evaporation processes of silicone-oil-seeded 1,2-hexanediol–water droplets with opposite orientations are displayed in figure 1. The upper (*ai–av*) and lower (*bi–biv*) rows show the evolution of a sessile droplet and a pendent droplet, respectively. At the beginning of the recording (approximately 30 s after droplet deposition), the segregation of 1,2-hexanediol already appeared for both droplets (figure 1*ai, bi*), as revealed by the yellow colour.

For the sessile droplet in figure 1(*a ii*), in the segregation process, plumes formed, rising from the contact line towards the apex of the droplet. In figure 1(*a iii*), the shape of the plumes resembles those shapes emerging in a Rayleigh–Taylor instability (Sharp 1984; Boffetta & Mazzino 2017; Zhou 2017*a, b*). The plumes later coalesce with each other, eventually fully covering the whole surface of the droplet and thereby ceasing the evaporation process. However, for the pendent droplet, the separated ring only monotonically grows without any plume formation. This observation clearly demonstrates that the flow structure on the droplet interface is controlled by gravity. The mechanism of the formation of the buoyancy-driven flow structure is interpreted along the schematics in figure 2. In equilibrium, the silicone oil forms oil-in-water microemulsions owing to the existence of 1,2-hexanediol as a surfactant (Alany *et al.* 2000). After the droplet has been deposited on the substrate, some oil droplets nucleate on the solid surface, as was also observed experimentally in figure 2(*c*). The reason is that the silicone oil has a much lower

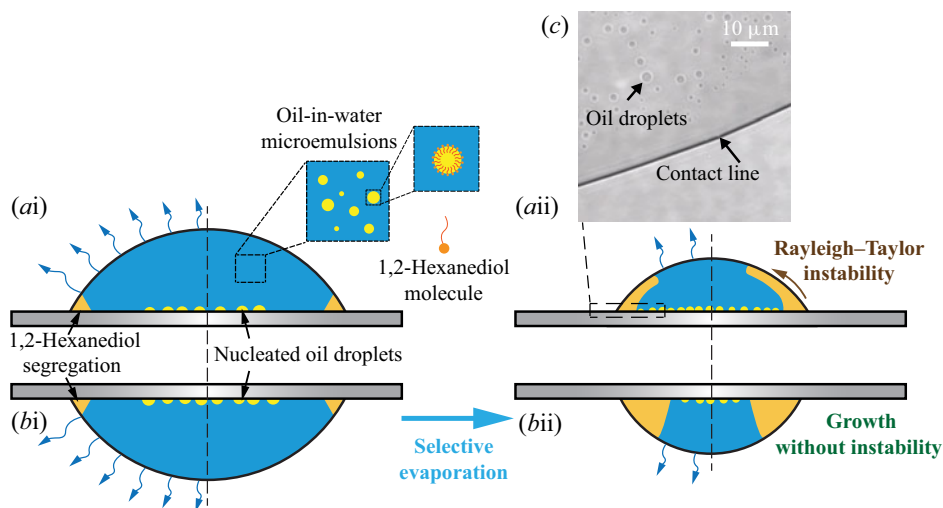


FIGURE 2. Schematics of the silicone-oil-seeded binary droplets with opposite orientations. (ai) Within the bulk of the droplet, there is an oil–water microemulsion. Because of the preferential evaporation of water near the contact line, 1,2-hexanediol is extracted by silicone oil and starts separating in this region. The non-volatile 1,2-hexanediol segregation shields the evaporation of water at the rim. (aii) The weak surface tension gradient cannot lead to a strong Marangoni flow on the surface. Instead, in the long term, buoyancy drives the arising plumes (Rayleigh–Taylor instability). (bi) When we orientate the droplet upside down, a similar segregation of 1,2-hexanediol occurs near the contact line. (bii) However, the segregation rim continuously grows due to the selective evaporation of water but no plumes appear due to the inverted direction of gravity. (c) The nucleated oil droplets on the substrate (bottom optical view).

interfacial energy with OTS glass than the 1,2-hexanediol–water mixture. This can be seen by comparing the equilibrium contact angle of a pure silicone oil droplet on the OTS glass with that of the 1,2-hexanediol–water mixture droplet. The former is only 10° , whereas the latter is 40° . Early on in the evaporation process, the oil droplets in the oil–water emulsions in the bulk of the droplet aggregate due to the depletion of water. These oil droplets together with those which have already nucleated on the substrate trigger the extraction of 1,2-hexanediol from the aqueous solution such that the 1,2-hexanediol phase separates from the water phase.

For a sessile droplet drying on a flat substrate with a contact angle smaller than 90° , the evaporative flux is maximal at the contact line (Deegan *et al.* 1997). Hence, the extraction starts from the edge of the droplet due to the fast evaporation of water in that region, leading to a 1,2-hexanediol ring that hinders the further evaporation from the contact line region. The non-volatile ring impedes the build-up of the concentration gradient, which results in a suppression of the surface tension gradient, which therefore cannot play a dominant role in controlling the flow. Instead, because of the lower density of 1,2-hexanediol as compared to the mixture, the separated phase of 1,2-hexanediol at the bottom of the droplet rises up to the apex, driven by buoyancy.

3.2. Evidence of suppression of Marangoni flow from μ PIV measurements

To prove our interpretation, we performed μ PIV measurements to characterize the flow field within the evaporating silicone-oil-seeded (SOS) 1,2-hexanediol–water droplet.

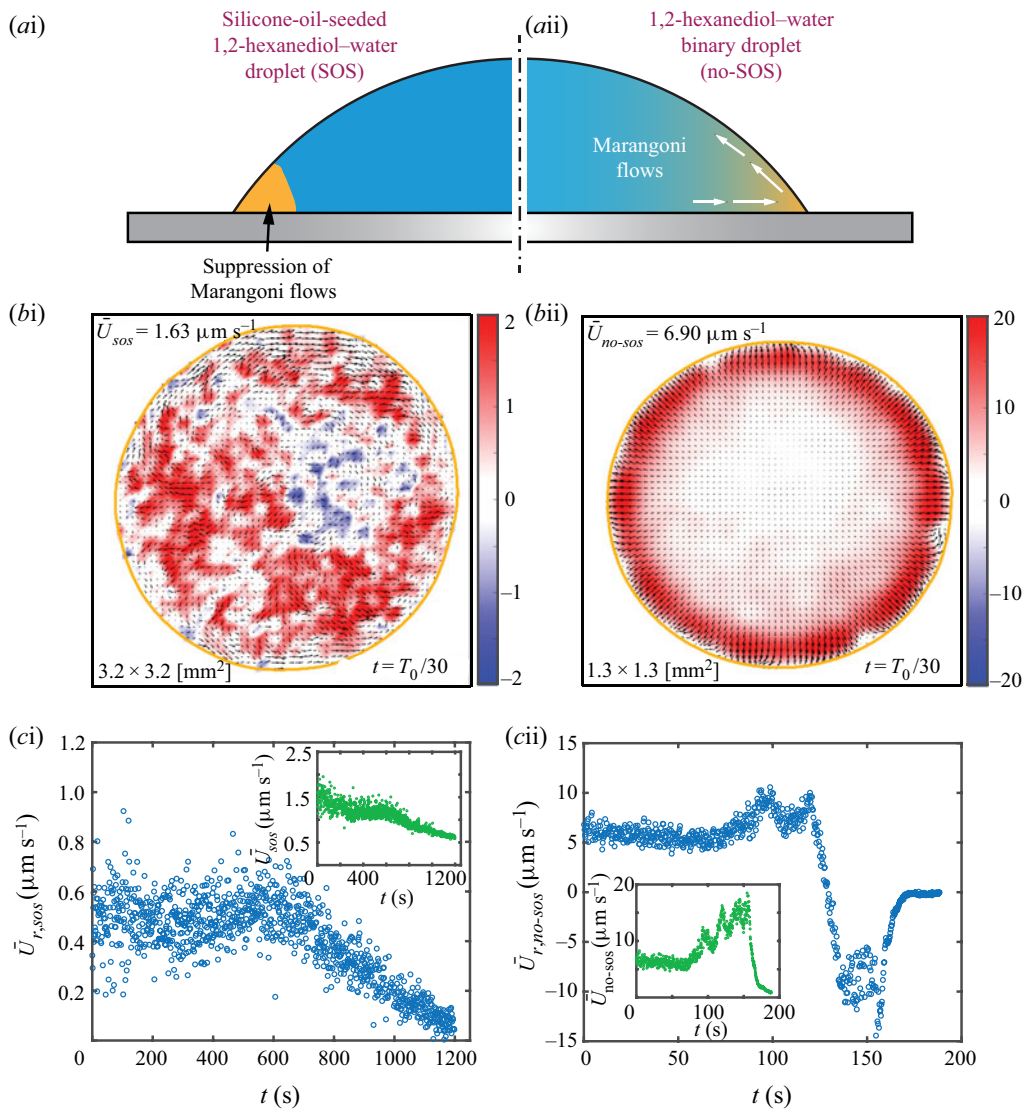


FIGURE 3. The μ PIV measurements of the velocity fields of a silicone-oil-seeded 1,2-hexanediol-water (SOS) droplet and a 1,2-hexanediol-water (no-SOS) binary droplet (Li *et al.* 2018). (ai, aii) Schematics of both droplets at the early life stage. (bi, bii) The μ PIV snapshot of the velocity field in the focal plane near the substrate at the beginning of the evaporation process. The arrows display the local velocity, and the radial velocity is colour coded. (bi) The map shows that there is no visible coherent radial flow. Note that the colour scale bar for $U_{r,sos}$ ranges from -2 to $+2 \mu\text{m s}^{-1}$, indicating a weak Marangoni flow in a SOS droplet. (bii) The liquid flows radially towards the edge of the no-SOS droplet from the interior. The radial flow is most intense ($\sim 20 \mu\text{m s}^{-1}$) near the contact line, implying a strong Marangoni flow there. The colour scale bar for $U_{r,no-sos}$ covers a 10 times larger range than that for $U_{r,sos}$. (ci, cii) The evolution of the radial velocity U_r in the focal plane near the substrate for both droplets. The insets show the evolution of absolute mean flow velocity U .

Figure 3(ai) schematically illustrates that the segregation of 1,2-hexanediol suppresses the Marangoni flow in the contact line region. Figure 3(bi) displays a snapshot of the velocity field in the focal plane near the substrate at an early stage of the evaporation process, $t = T_0/30$ (T_0 is the droplet's lifetime). The velocity map shows chaotic and very weak flow motions. Figure 3(ci) shows the evolution of the mean radial velocity and the absolute mean velocity (inlet plot). The mean radial velocity $\bar{U}_{r,sos}$ is less than $1 \mu\text{m s}^{-1}$, and the absolute mean velocity \bar{U}_{sos} in the early stage is around $1 \mu\text{m s}^{-1}$. For comparison, we also measured the flow field for a 1,2-hexanediol–water binary droplet (without the silicone-oil seeding), which reveals the absence of density-driven flow (Li *et al.* 2018). In that case the velocity map in figure 3(bii) shows much more intense outward radial flows close to the contact line than in the case with silicone-oil seeding.

During the early lifetime, the mean radial flow velocity $\bar{U}_{r,no-sos}$ (figure 3cii) is more than $5 \mu\text{m s}^{-1}$, which is one order of magnitude higher than that in the former case. The measured velocities for both cases imply Reynolds numbers $Re_{sos} = \rho R_d \bar{U}_{sos} / \mu \sim 10^{-4}$ and $Re_{no-sos} = \rho R_d \bar{U}_{no-sos} / \mu \sim 10^{-3}$, where $\rho \approx 10^3 \text{ kg m}^{-3}$, $R_d \approx 10^{-3} \text{ m}$ and $\mu \approx 10 \text{ mPa s}$ are the liquid density, droplet radius and liquid viscosity, respectively. We estimate the Marangoni time scale in the two cases by using the mean velocity of the radial flow: $t_{Ma,sos} \sim R_d / \bar{U}_{r,sos} \approx 10^{-3} \text{ m} / 10^{-6} \text{ m s}^{-1} = 10^3 \text{ s}$ and $t_{Ma,no-sos} \sim R_d / \bar{U}_{r,no-sos} \approx 10^{-3} \text{ m} / 10^{-5} \text{ m s}^{-1} = 10^2 \text{ s}$. By looking at the rising time of the plumes from figure 1, we obtain the Rayleigh time scale of the Rayleigh–Taylor instability $t_{Ra} \sim 10^2 \text{ s}$ (estimated time of the plumes rising up from the rim to the apex of the droplet). In the silicone-oil-seeding case, the Rayleigh time scale is much smaller than the Marangoni time scale: $t_{Ra}/t_{Ma,sos} \ll 1$, which indicates that the buoyancy flow is dominant. In the non-silicone-oil-seeding case, the two time scales are comparable: $t_{Ra}/t_{Ma,no-sos} \approx 1$, which substantiates that gravity-driven flow is balanced by Marangoni flow, thereby playing no controlling role. We argue that, in the silicone-oil-seeded 1,2-hexanediol–water droplet, the instantaneous segregation hinders the evaporation near the contact line, which suppresses the most intensive Marangoni flow in that region, leading to a weak flow motion in the whole droplet. Therefore, on a relatively long time scale, the buoyancy force due to the density difference dominates the flow, causing Rayleigh–Taylor instability.

We estimate the most unstable wavelength of the Rayleigh–Taylor instability in our system to be $\lambda_m \approx 4\pi(v^2/(g_s At))^{1/3} \approx 10^3 \mu\text{m}$ (Olson & Jacobs 2009). In this expression, $g_s = g \sin(\theta)$ is the net acceleration imposed on the interface of the droplet, where $g \approx 9.8 \text{ m s}^{-2}$ is the gravitational acceleration and $\theta \approx 35^\circ$ is the droplet contact angle (see figure 7di,dii); At is the Atwood number given by $At = (\rho_m - \rho_H)/(\rho_m + \rho_H) \approx 2.3 \times 10^{-2}$, where $\rho_m = 997 \text{ kg m}^{-3}$ and $\rho_H = 952 \text{ kg m}^{-3}$ are the density of the mixture and of pure 1,2-hexanediol, respectively (Romero *et al.* 2007) and $v = (\mu_m + \mu_H)/(\rho_m + \rho_H)$ is the averaged kinematic viscosity, where $\mu_m \approx 2 \text{ mPa s}$ and $\mu_H \approx 80 \text{ mPa s}$ are the dynamic viscosities of the mixture and of pure 1,2-hexanediol, respectively (Jarosiewicz, Czechowski & Jazdyn 2004). Here $At \ll 1$, the low-density liquid, which is 1,2-hexanediol, moves into the heavy fluid in the upper layer (Sharp 1984). The estimated wavelength λ_m is comparable to the spatial distance between two plumes $\lambda \approx 10^3 \mu\text{m}$ in figure 1(aiii), supporting our interpretation of the plumes as Rayleigh–Taylor instability.

3.3. Evaporation-triggered extraction of 1,2-hexanediol by seeding oils

To evaluate the applicability of different oils for the extraction effect, we seeded the 1,2-hexanediol–water binary solution with several kinds of oils at the concentration of 0.5 wt %, namely silicone oils with viscosities of 12 500 cSt and 100 cSt. As shown in

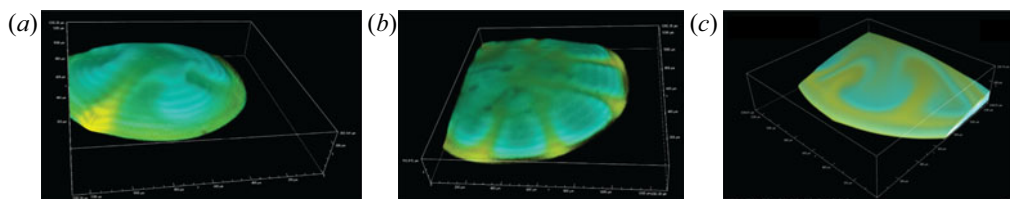


FIGURE 4. Confocal images of segregation patterns for droplets seeded with different oils, namely (a) silicone oil with 12 500 cSt viscosity, (b) silicone oil with 100 cSt viscosity, and (c) 1,2-hexanediol–water binary droplet deposited by a plastic syringe and a disposable needle. The confocal microscope scan covered a rectangular box with the section area of $1225 \mu\text{m} \times 1280 \mu\text{m}$.

figure 4(a,b), the 1,2-hexanediol–water droplets seeded with the three different oils all show similar plumes rising up from the rim of the sessile droplet towards the apex during the evaporation process. The consistency clearly demonstrates that the evaporation can trigger the early extraction of 1,2-hexanediol by the oil–water emulsions in these solutions, leading to the segregation of 1,2-hexanediol and the resulting flow structures.

We also tested a series of concentration ratios of the seeding oil: 0.5, 0.1, 0.05 and 0.025 wt %. Our observation shows that the effect holds for the concentration of silicone oil down to 0.025 wt %. The robustness of the extraction effect even at tiny silicone oil concentrations obviously raises the question of the control of oil contamination in such liquid systems. This issue had been addressed before by Berklaar *et al.* (2014) in a study on nanobubble nucleation. They found that the polydimethylsiloxane (PDMS) coating in a plastic syringe and a disposable needle can contaminate the solution to form nanobubble-like objects on the substrate, which in fact were silicone oil nanodroplets. In their study, the concentration ratio between PDMS (Sylgard 184, Dow Corning) and water was 0.1 ml/0.4 l, which is ≈ 0.025 wt %.

To see whether we can trigger similar contamination effects also here, in a test experiment, we used the same plastic syringe (5 ml, Discardit, BD) and disposable needle (Microlance, BD) to deposit a 1,2-hexanediol–water *binary* droplet on the substrate. Indeed, similar Rayleigh–Taylor-like patterns as in our other experiments with silicone oil also occur in such a droplet during the evaporation process (as shown in figure 4c), which confirms that even minute PDMS contamination can cause the early extraction of 1,2-hexanediol during the evaporation process.

3.4. Reversed segregation by evaporation on a lubricated film

In the previous sections, we experimentally demonstrated that gravitational effects dominate the flow structure in the droplet system, due to the suppression of Marangoni flow by the instantaneous segregation of 1,2-hexanediol close to the contact line. We argued that the early phase separation is caused by the coupling of the extraction effect by the seeding oil and the maximal evaporation rate at the contact line. In order to validate this argument, we suppress the local evaporative flux at the contact line by introducing a non-volatile wetting ridge, which can be achieved by letting the droplet evaporate on a lubricated surface (Schellenberger *et al.* 2015; Gao *et al.* 2019).

We performed the experiment in which the silicone-oil-seeded droplet evaporates on a lubricated surface of silicone oil (Sigma-Aldrich, viscosity 1000 cSt). The lubricated surface was made by spin coating of silicone oil on a solid glass substrate (Gerhard Menzel GmbH, $76 \text{ mm} \times 26 \text{ mm}$), with a typical thickness of $18 \pm 1 \mu\text{m}$ (Hack *et al.*

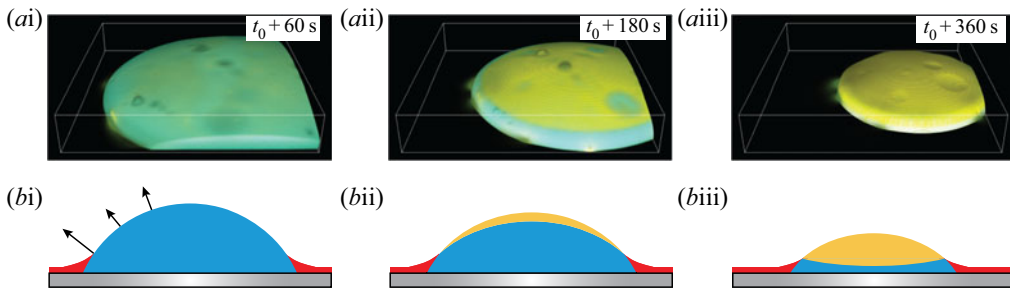


FIGURE 5. The dynamic behaviour of a silicone-oil-seeded 1,2-hexanediol–water droplet evaporating on a silicone oil thin film. (ai–aiii) Confocal microscopy images for a scanned box with volume $1225 \mu\text{m} \times 1280 \mu\text{m} \times 250 \mu\text{m}$. (ai) At the beginning, the droplet is homogeneously mixed. (aii) The segregation of 1,2-hexanediol started appearing on the upper surface of the droplet instead of the contact line area. (aiii) The evaporation ceased when the droplet surface was shielded by 1,2-hexanediol. (bi–biii) Schematic of the evaporation process. The red colour represents the silicone oil thin film. It forms a meniscus at the contact line.

2018). The equilibrium contact angle θ of the droplet on this lubricated surface is 38° (see figure 7*di, dii*), which is close to the contact angles in the first two cases. In the experiment, we still only dyed the 1,2-hexanediol and water with the same method mentioned in § 2. Thus the silicone oil film is not visible in the confocal movie (available online at <https://doi.org/10.1017/jfm.2020.449>).

One wonders whether there is an intercalated film in between the droplet and the substrate. To find out, we performed interferometry (Daniel *et al.* 2017). The measurements do not show any interference patterns, which suggests that there is no stable intercalated film. Within a second, the droplet re-wets the substrate by rupturing the thin film after the deposition. We estimate the spreading coefficient $S = \gamma_{da} - \gamma_{do} - \gamma_{oa} \approx 24 \text{ mN m}^{-1} - 20 \text{ mN m}^{-1} - 21 \text{ mN m}^{-1} < 0$, where γ is the interfacial tension, and the subscripts a , o and d indicate the air and oil phases, and the droplet, respectively. The result $S < 0$ is consistent with no oil-engulfment covering on the surface of the droplet. In the beginning of the evaporation (figure 5*ai*), the droplet is homogeneously mixed, which reveals the green colour. Later on, as shown in figure 5(*aii*), the segregation of 1,2-hexanediol (yellow colour) starts appearing at the upper part of the droplet rather than from the edge. Also note that in this third case the segregation behaviour is different from the first two cases, as it appears more homogeneously and slowly. The reason is that the segregation in this third case is triggered by the nucleated oil droplets in the bulk instead of those on the substrate, which have a much higher number density in the early phase of the nucleation process and which play the essential role to trigger the early segregation. In figure 5(*aiii*), the evaporation ceases with the shielding of separated 1,2-hexanediol. This observation shows a different route of segregation, which indicates a faster evaporation rate from the upper surface than from the contact line.

The explanation is that the thin film forms a wetting ridge covering on the contact line region, as illustrated in figure 5(*bi*), which hinders the evaporative flux from there (Gao *et al.* 2019). Consequently, only the water molecules on the upper surface of the droplet evaporate into the surrounding air, which leads to a high concentration of 1,2-hexanediol at the top of the droplet. Then the highly concentrated 1,2-hexanediol on the upper surface nucleates and segregates from the mixture (figure 5*bii*). At the end of the evaporation, there is still water entrapped by the shielding thanks to the segregated 1,2-hexanediol and the silicone oil meniscus, as illustrated in figure 5(*biii*).

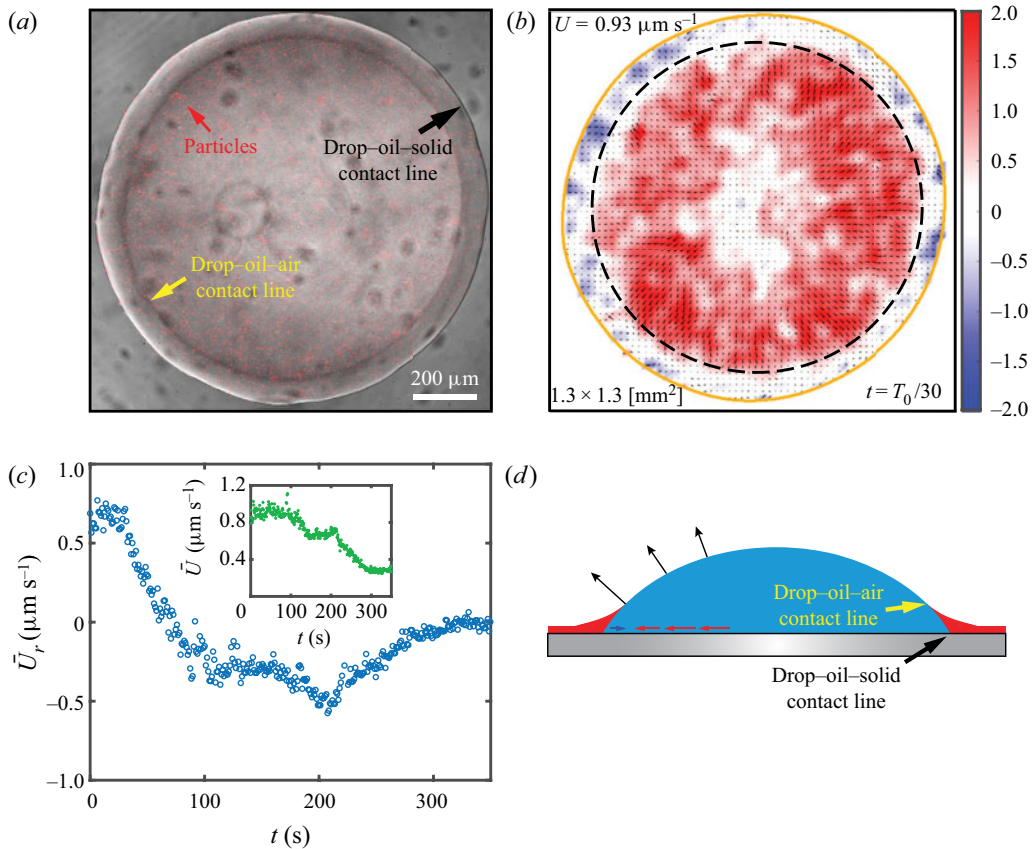


FIGURE 6. The μ PIV measurement of a silicone-oil-seeded 1,2-hexanediol–water droplet evaporating on a silicone oil thin film. (a) The μ PIV image focusing on the bottom of the droplet ($\approx 10 \mu\text{m}$ above the substrate). Note that the two circular rings indicate the drop–oil–solid contact line (marked by the black arrow) and the drop–oil–air contact line (marked by the yellow arrow). (b) Flow field of μ PIV at $t = T_0/30$, where T_0 is the droplet’s lifetime. The black dashed line indicates the horizontal position of the drop–oil–air contact line. (c) The evolution of the mean radial velocity \bar{U}_r and the mean absolute velocity \bar{U} . (d) Schematics of a silicone-oil-seeded 1,2-hexanediol–water droplet evaporating on a silicone oil thin film.

To further support the argument that the wetting ridge suppresses the local evaporative flux at the contact line, we also employed μ PIV measurement for the silicone-oil-seeded 1,2-hexanediol–water droplet evaporating on a silicone oil thin film, as shown in figure 6. The flow field was measured at the focal plane $\approx 10 \mu\text{m}$ above the substrate. Figure 6(a) displays the bottom-view image at the beginning of the evaporation process. Two circular rings can be observed. As indicated by the black and the yellow arrows, the outer ring and inner ring represent the drop–oil–solid contact line and the drop–oil–air contact line, respectively. Figure 6(b) shows the typical velocity field of the flow structure. The radial velocity U_r is colour-coded. One can see that the radial flow is comparable to the radial velocity in the first case (figure 3bi), which is much weaker as compared to the Marangoni flow in the binary droplet (figure 3bii). Moreover, the outward radial flow from the interior ceases at the horizontal position of the drop–oil–air contact line. Near the contact line of the droplet, the radial flow even reverses inwardly (revealed by blue colour in figure 6b). The flow reversal reflects the fact that the liquid in the contact line region

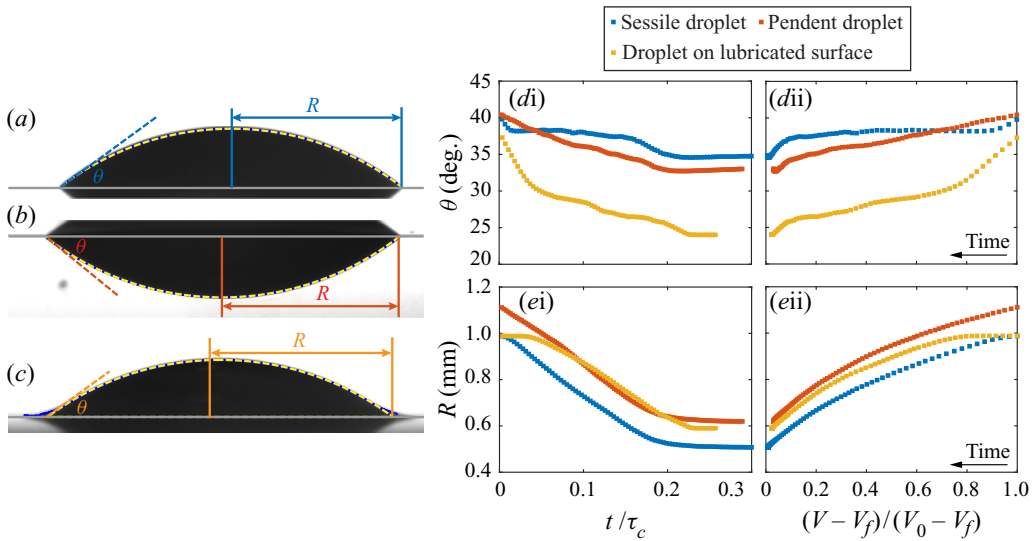


FIGURE 7. Morphology evolution of the evaporating droplets in three different scenarios: sessile, pendent and on the lubricated film. (a–c) Recorded images of the droplets in the three cases, with annotations of the geometrical parameters, i.e. contact angle θ and footprint radius R . Note that for the droplet on the lubricated surface (c), we fit the large part of the surface with a spherical curve (see the yellow dashed line), and define the contact angle and footprint radius of the fitting shape as θ and R . (d,e) The contact angle θ and footprint radius R as a function of scaled time $\hat{t} = t/\tau_c$ and scaled droplet volume $\hat{V} = (V - V_f)/(V_0 - V_f)$.

can only flow inwardly to maintain the decreasing contact angle and the pinning contact line at this early stage of the droplet's lifetime (see figure 7*di,ei*). This is direct evidence that the evaporative flux near the contact line is suppressed by the oil wetting ridge. As shown in figure 6(c), the mean radial flow decreases and then changes direction due to the shrinking of the contact area (figure 7*di,ei*).

4. Evaporation process and its quantitative understanding

A thorough insight into the evaporation process requires a quantitative understanding. Although the evaporation of a multicomponent droplet is far more complicated than that of a single-component droplet, the essence of the system is still limited by the diffusion of vapour molecules of each component into the surrounding air (Langmuir 1918; Diddens *et al.* 2017). In this session, we first introduce a diffusion model to describe the evaporative rate for multicomponent droplets. Then we show the geometrical measurement for the three different cases: (a) a silicone-oil-seeded 1,2-hexanediol–water sessile droplet; (b) a silicone-oil-seeded 1,2-hexanediol–water pendent droplet; and (c) a silicone-oil-seeded 1,2-hexanediol–water droplet on a lubricated surface. Finally, we compare a modified multicomponent-diffusion model with the influence of segregation considered with our measurement and discuss the results.

4.1. Multicomponent-diffusion model

Popov (2005) proposed an analytical description for the diffusion-controlled evaporation of a sessile droplet with one single component, which was later experimentally confirmed

by Gelderblom *et al.* (2011) and Sobac & Brutin (2011). For the evaporation of multicomponent droplets, we use the method put forward by Brenn *et al.* (2007), considering the total evaporation rate of the mixture droplet as the sum of the evaporation rates of each individual component. In our droplet mixture system, only the diffusive flux of water contributes to the total evaporation rate. However, non-volatile components in the system also affect the vapour–liquid equilibrium: the existence of 1,2-hexanediol and silicone oil changes the saturated concentration of water vapour at the liquid–air interface. Raoult’s law is used to calculate the difference: $c_{w,s} = X_w c_{w,s}^0$, where X_w is the liquid mole fraction of the water component at the interface and $c_{w,s}^0 = 2.08 \times 10^{-2} \text{ kg m}^{-3}$ is the saturated vapour concentration of the pure water at room temperature. However, Raoult’s law applies only to an ideal solution and thus ignores any interaction between the components. To overcome this limitation, a so-called activity a_i for each component is introduced to describe this interaction (Chu & Prosperetti 2016), $a_i = \psi_i X_i$, where ψ_i is the activity coefficient. In our case, the mole fraction of silicone oil is negligible ($<0.1\%$); thus, we consider only the interaction between water and 1,2-hexanediol. Therefore, the saturated concentration of water vapour at the interface becomes $c_{w,s} = a_w c_{w,s}^0$.

By using Raoult’s law together with the water activity a_w (Marcolli & Peter 2005) to modify the one-liquid model (Popov 2005), we obtain a theoretical model to express the evaporation rate for the water in our system:

$$\frac{dM}{dt} = -\pi DR(a_w c_{w,s}^0 - c_{w,\infty})f(\theta), \quad (4.1)$$

with

$$f(\theta) = \frac{\sin(\theta)}{1 + \cos(\theta)} + 4 \int_0^\infty \frac{1 + \cosh(2\theta\varepsilon)}{\sinh(2\pi\varepsilon)} \tanh[(\pi - \theta)\varepsilon] d\varepsilon, \quad (4.2)$$

where $D = 24.6 \times 10^{-6} \text{ m}^2 \text{ s}^{-1}$ is the diffusion coefficient of water vapour in air at room temperature, and R and θ are the footprint radius and contact angle of the droplet, respectively.

Besides controlling the evaporation rate, the model also yields the terminal state of the evaporation, which is when the saturated water vapour concentration equals the environmental concentration, $c_{w,s} = c_{w,\infty}$. Theoretically, the evaporation ceases when the active mole fraction of water equals the relative humidity of the surrounding air, $a_w = \psi_w X_w = RH$. From the relative humidity RH measured in each experiment, we can analytically calculate the ‘theoretical final volume’ V_f (as shown in appendix A) of each measured droplet as

$$V_f = \left(\frac{M_w}{M_H} \frac{RH}{\psi_w - RH} + \frac{\rho_w}{\rho_H} \right) \left(\frac{1 - C}{C} + \frac{\rho_w}{\rho_H} \right)^{-1} V_0, \quad (4.3)$$

in which M_H and M_w are the molecular mass of 1,2-hexanediol and that of water, ρ_H and ρ_w are their liquid densities at room temperature, and C is the initial mass concentration of 1,2-hexanediol in each measurement. We rescale the measured droplet volume and time, by introducing non-dimensional volume $\hat{V} = (V - V_f)/(V_0 - V_f)$ and time $\hat{t} = t/\tau_c$ (Gelderblom *et al.* 2011), in order to compare the different sets of experimental data. Here V is the droplet volume measured in every time interval, V_0 is the initial volume of each measurement and V_f is the estimated final volume by (4.3); and τ_c is the characteristic time scale of droplet lifetime, $\tau_c = \rho_l R^2/(D\Delta c)$ (Gelderblom *et al.* 2011), where ρ_l is

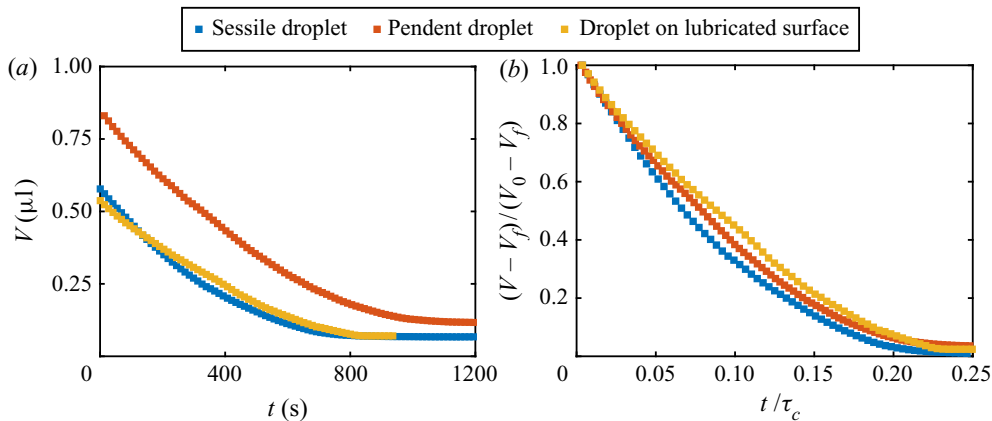


FIGURE 8. (a) Volumetric evolutions of a sessile droplet, a pendent droplet and a droplet on a lubricated surface. (b) Scaled droplet volume $\hat{V} = (V - V_f)/(V_0 - V_f)$ as a function of scaled time $\hat{t} = t/\tau_c$.

the density of the liquid and Δc the water vapour concentration difference between the air–liquid interface and the surrounding air.

4.2. Evaporation modes and volumetric measurement

In figure 7 we show the measured contact angle θ and the footprint radius R of (a) a sessile droplet, (b) a pendent droplet and (c) a droplet on a lubricated surface. Figure 7(a–c) shows a snapshot of each droplet. Note that, due to the existence of the oil meniscus in the third case (figure 7c), we define the contact angle and footprint radius by fitting the droplet profile with a spherical cap, shown as the yellow dashed line. Figure 7(d,e) shows the evolution of the two parameters as a function of the scaled time $\hat{t} = t/\tau_c$ and volume $\hat{V} = (V - V_f)/(V_0 - V_f)$. We observe a sliding contact line during the evaporation for both sessile and pendent droplets. For the sessile droplet, the contact angle remains almost constant during most of the lifetime, but for the pendent droplet, the contact angle always decreases. For the droplet on the thin film, the evaporation follows the stick–slide mode (Nguyen & Nguyen 2012; Stauber *et al.* 2014, 2015), i.e. it first evaporates with a pinning contact line, and then shrinks with decreasing contact angle.

In figure 8(a), we show the volumetric evolutions for the three cases. The evaporation lifetime is normally affected by both the evaporation modes and environmental conditions. In figure 8(b) we compare the volumetric evolution for the three cases by rescaling them with $\hat{t} = t/\tau_c$ and $\hat{V} = (V - V_f)/(V_0 - V_f)$. The deviation between the curves clearly implies that the evaporation kinetics is affected not only by the evaporation modes and environmental conditions, but also by the segregation patterns. Note that the first case with the Rayleigh–Taylor instability (blue square symbols in figure 8b) shows the fastest volumetric decrease among the three cases (compare the slopes of the curves). The percentages of entrapped water compared to the initial amount of water in the final residual of the three droplets were around 16%, 30% and 27%, respectively, estimated from the final volume of droplets. We argue that the fastest evaporation rate coinciding with the lowest water entrapment percentage in the first case is because of the Rayleigh–Taylor instability, causing a better mixing of the components than in the other two cases.

4.3. *Evaporative flux profile and modified diffusion model*

To further quantify the mass transfer process, we first use the Sherwood number Sh derived by Dietrich *et al.* (2016) in a diffusion-limited case, and extend it to a mixture system by including Raoult's law and activity coefficient:

$$Sh = \frac{\langle \dot{M} \rangle_A R_{eq}}{D(a_w c_{w,s}^0 - c_{w,\infty})}, \quad (4.4)$$

where $\langle \dot{M} \rangle_A$ is the actual mass loss rate (measured in experiments), averaged over the droplet surface area A , and $R_{eq} = (3V/(2\pi))^{1/3}$ is the equivalent radius. For sessile droplets, if the mass transfer occurs purely via diffusion, the Sherwood number is (Dietrich *et al.* 2016)

$$Sh_d = \frac{f(\theta)}{\sin \theta \left(1 + \tan^2 \frac{\theta}{2} \right) \left(\frac{2}{2 - 3 \cos \theta + \cos^3 \theta} \right)^{1/3}}, \quad (4.5)$$

which depends only on the droplet contact angle θ . Note that the Sherwood number here scales mass transfer with respect to a diffusive spherical droplet.

In figure 9, we plot the experimental data for the three cases by rescaling them based on (4.4) with an assumption that the mixture liquid components distribute homogeneously. The overestimation of the Sherwood number following from the single-component diffusive model (black curve) as compared to the experiments indicates that the assumption of homogeneous mixing does not hold for the three cases, which clearly is due to the segregation of 1,2-hexanediol. Specifically, for both sessile (blue squares) and pendent (red squares) droplets, the experimental data and theoretical model show good agreement at the beginning of the evaporation process and they deviate from each other later on. The reason for this deviation is that the distribution of compositions is no longer homogeneous when segregation of 1,2-hexanediol occurs, i.e. the assumption of an evenly mixed system overestimates the local concentration of water on the surface. For the droplet on a lubricated surface (yellow squares), the model overpredicts the evaporation rate for the whole process, even from the very beginning. This is due to the fact that the non-volatile oil meniscus hinders the evaporation of water near the contact line during the entire droplet lifetime.

To get a quantitative description of the evaporation rate in the mixture droplets, we further modify the mixture model (4.1) by considering the effect of segregation patterns on the evaporative flux profile of each droplet. For the first two cases, as sketched in figure 10(ai, aii), the hindrance of the local evaporative flux originates from the non-volatile 1,2-hexanediol segregation. In the limit of small contact angle ($\theta < 40^\circ$), the local evaporative flux on the drop-air interface can be described as $j(r, \theta) \sim (R_s - r)^{-(\pi-2\theta)/(2\pi-2\theta)}$, which is maximal at $r = R_s$ (Deegan *et al.* 1997; Sobac & Brutin 2014), where R_s is the distance between the centre of the droplet and the front of the segregation. Hence we obtain the total evaporative flux of the droplet with segregation by replacing R with R_s in (4.1):

$$\frac{dM}{dt} = \int_0^{R_s} j(r, \theta) \sqrt{1 + (\partial_r h)^2} 2\pi r dr = -\pi D R_s (a_w c_{w,s}^0 - c_{w,\infty}) f(\theta_s), \quad (4.6)$$

where θ_s is the tangential angle at the front of the segregation (see figure 10ai). As the angle is small, $0 \leq \theta_s \leq 40^\circ$, we approximate $f(\theta_s) \approx 4/\pi$ (Hu & Larson 2002; Sobac &

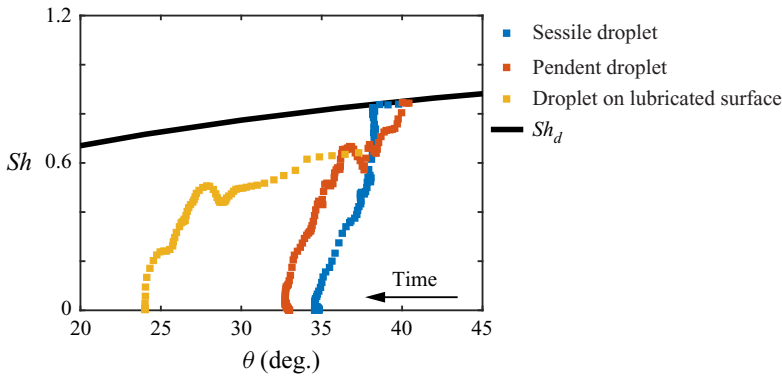


FIGURE 9. Sherwood number as a function of contact angle of a sessile droplet (blue), a pendent droplet (red) and a droplet on a lubricated surface (yellow). The black solid line represents the theoretical Sherwood number Sh_d , which is described by (4.5).

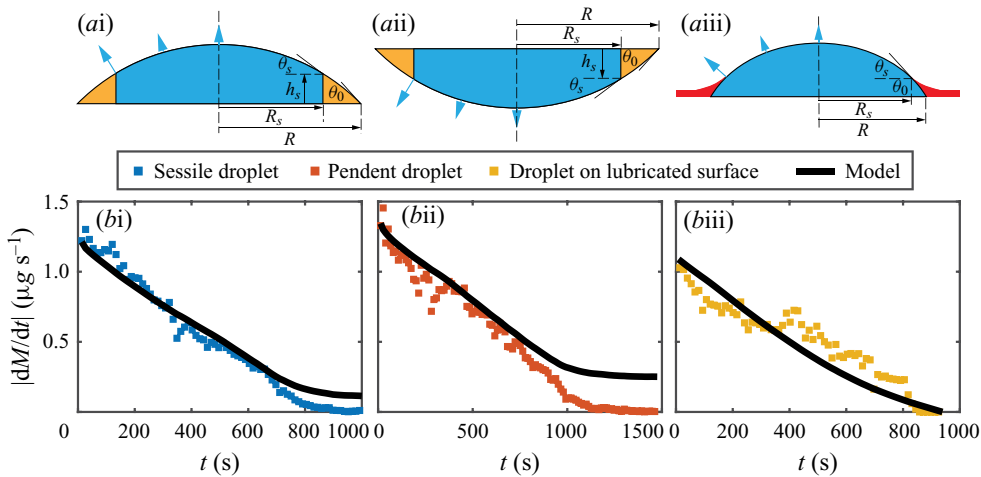


FIGURE 10. Schematic view of the evaporation of (ai) a sessile droplet, (aai) a pendent droplet and (aiii) a droplet on a lubricated surface. (bi–biii) Temporal evaporation rate of each droplet in (ai–aiii), respectively, during the evaporation process. The black solid line represents the prediction of the theoretical model.

Brutin 2011) in our calculation for convenience. This approximation was shown to be appropriate in colloidal suspension droplets with similar configurations (Sobac & Brutin 2014).

In order to calculate R_s , the volume of the segregated liquid is required. From the confocal imaging, we observe an almost instantaneous segregation of 1,2-hexanediol. Hence we assume that the water mostly depletes in the segregation region (the yellow part in figure 10ai) and remains nearly constant in the mixture region (the blue part in figure 10ai). The mass in the segregation region ΔM_s can be calculated by multiplying the volume of the region ΔV_s and the density of 1,2-hexanediol ρ_H :

$$\Delta M_s = \rho_H \Delta V_s = \rho_H \int_{R_s}^R 2\pi r h(r) dr = \frac{\pi\theta}{4R} (R^2 - R_s^2)^2, \tag{4.7}$$

where $h(r) = ((R^2 - r^2)/(2R))\theta$ is the local height calculated from the parabolic approximation at distance r from the centre of the droplet. The separated 1,2-hexanediol is caused by the depletion of water, $\Delta M_w = \rho_w \Delta V$, where ΔV is the volume loss measured from the experiment and ρ_w is the density of water. According to the initial mass concentration of 1,2-hexanediol C , we then have

$$\Delta M_s = \frac{C}{1-C} \Delta M_w = \frac{C}{1-C} \rho_w \Delta V. \quad (4.8)$$

By combining (4.7) and (4.8), we obtain

$$R_s = R \left(1 - \sqrt{\Delta V \frac{C}{1-C} \frac{\rho_w}{\rho_H} \frac{4}{\pi \theta R^3}} \right)^{1/2}. \quad (4.9)$$

By substituting (4.9) into (4.6), we can theoretically calculate the evaporation rate without any adjustable parameters. Note that we approximate $a_w(X_w)$ by taking the initial water mole fraction X_w as a constant for the whole process. For the third case where the droplet evaporates on the thin film, the evaporative flux profile is changed by the hindrance of the oil wetting ridge. As shown in figure 10(a_{iii}), the evaporative flux profile is identical to the first two cases: it is maximal at the drop–oil–air contact line. Therefore, the total evaporation flux rate can also be described by (4.6). Then R_s is the horizontal distance from the centre of the droplet to the triple-phase contact line. We can measure R_s by determining the position of the triple-phase contact line from the bottom-view image, as shown in figure 6(a). We use $a_w(X_w)$ with a temporal water mole fraction X_w calculated from the volumetric measurement.

In figure 10(b_i–b_{iii}), we show the measured evaporation rate corresponding to each case and compare them with the theoretical prediction by (4.6). For both sessile and pendent droplets (figure 10b_i–b_{ii}), the experimental data and theoretical model show good agreement for a large part of the process and deviate from each other only in the late stage of the lifetime. The main reason for this deviation at the very end of the evaporation process is that the water entrapped by the segregation of 1,2-hexanediol does not homogeneously distribute in the droplet, i.e. the assumption of an evenly mixed system overestimates the local concentration of water on the surface. For the droplet on a lubricated surface, the model gives a good description of the evaporation rate.

Finally, note that, in the second half of the lifetime, the model underestimates the evaporation rate. This can be explained by the fact that, near the triple-phase contact line, the wetting edge is not thick enough to completely hinder the evaporation of water. Water can still evaporate into the air in that region by first diffusing through the thin layer of oil.

5. Summary and outlook

In this work, we experimentally studied the evaporation behaviour of a silicone-oil-seeded 1,2-hexanediol–water droplet. The observation shows an instantaneous segregation of 1,2-hexanediol in the sessile droplet followed by the formation of plumes of the segregated fluid. By orientating the droplet upside down, the absence of plumes indicates that the observed instability is indeed controlled by gravity, confirming the interpretation as a Rayleigh–Taylor instability. We have shown that through hindering the strong evaporation near the contact line by segregation of non-volatile 1,2-hexanediol, the Marangoni effect can be significantly suppressed, thus allowing the buoyancy force to play a dominant role

in the flow structure. Following the idea of suppressing evaporation locally by coverage with a non-volatile component, we can manipulate the segregation to start preferentially from the top rather than the edge of the droplet by letting the droplet evaporate on a lubricated surface.

Since the evaporation of droplets shows complex physicochemical behaviour, i.e. segregation of 1,2-hexanediol, it is difficult to obtain knowledge of the local concentration. We theoretically apply a scaling analysis to the experimental investigation of droplets in three cases, namely a sessile droplet, a pendent droplet and a droplet on a lubricated surface. This shows different evaporation modes of contact line behaviour in each case. By comparing the measurement of the evaporation rate with the multicomponent-diffusion model, we show that the segregation of the non-volatile component significantly delays the evaporation of water and even leads to entrapment of water in the residue of the droplets.

To the best of our knowledge, this work is the first observation of the Rayleigh–Taylor instability in a microdroplet system triggered by evaporation. It is another example showing that Rayleigh convection can overcome Marangoni effects to control the flow structure in a milli-sized droplet with $Bo < 1$. As we have demonstrated that the mixing effect is highly influenced by the flow pattern, our findings may be crucial for many applications involving uniform surface coating and particle assembly. We have also shown that such a surprising phenomenon can be triggered by various different seeding oils, even at very low concentrations. We think that it is important for the community to realize that during evaporation processes that involve several different components, each component – even in minute amounts – may dramatically influence the overall behaviour.

Moreover, droplets need not always evaporate on a solid surface: there are many applications involving droplets drying on lubricated surfaces. In particular, in the inkjet printing process, a primary layer is printed on surfaces prior to the deposition of ink drops, in order to destabilize the pigments to improve the print quality (Hack *et al.* 2018). Our study of a silicone-oil-seeded mixture droplet evaporating on a lubricated surface provides an effective way to manipulate the segregation in such drying systems by utilizing the non-volatile meniscus to impede the evaporation from the edge.

Many questions still remain open. The difficulty to accurately predict the droplet lifetime originates from the lack of means to accurately monitor the local distribution of the liquid components. The complexity arises not only from the segregation of 1,2-hexanediol, but also from the later plume formation. How does one predict the onset of the Rayleigh–Taylor instability in this geometry of a spherical cap? Does the unstable wavelength between the plumes depend on the size or the contact angle of the droplets? To answer these questions, further studies on the parameter space are worthwhile. By considering the limitation of experimental measurements, a detailed insight may even require numerical simulations.

Acknowledgments

We thank P. Lv for inspiring discussions. We also thank the anonymous referees for their helpful suggestions to improve this paper. This work is part of an Industrial Partnership Programme (IPP) of the Netherlands Organization for Scientific Research (NWO). This research programme is co-financed by Canon Production Printing Holding B.V., University of Twente and Eindhoven University of Technology. D.L. gratefully acknowledges support by his ERC Advanced Grant DDD (project number 740479).

Declaration of interests

The authors report no conflict of interest.

Supplementary movie

Supplementary movie is available at <https://doi.org/10.1017/jfm.2020.449>.

Appendix A. Derivation of theoretical final volume

The molar fraction of water in a binary mixture is defined as the number of moles of water divided by the number of moles of both liquids. Here we neglect the tiny mole fraction ($<0.1\%$) of silicone oil. The mole fraction of water is

$$x_w = \frac{m_w/M_w}{m_w/M_w + m_H/M_H} = \frac{1}{1 + \frac{m_H M_w}{m_w M_H}}, \quad (\text{A } 1)$$

where m_w is the mass of water and m_H is the mass of 1,2-hexanediol. Here we assume that the density of the mixture is linear with the solute concentration, which means that the total volume of the mixture is the sum of the individual liquid volumes (Battino 1971). This is a reasonable approximation for 1,2-hexanediol–water mixtures. Then the initial density is given by

$$\rho_i = \frac{\frac{m_H + m_w}{\rho_H} + \frac{m_w}{\rho_w}}{\frac{m_H + m_w}{\rho_H} + \frac{m_w}{\rho_w}} = \frac{(m_H + m_w)\rho_H\rho_w}{m_H\rho_w + m_w\rho_H}, \quad (\text{A } 2)$$

where ρ_i is the initial density of the mixture, and ρ_H and ρ_w are the density of 1,2-hexanediol and water, respectively. We introduce the initial mass percentage C of the solute, whose value can be between 0 and 1. Then we have $m_w = m_H(1 - C)/C$ at the beginning before evaporation. By substituting this into (A 2), the equation reduces to

$$\rho_i = \frac{\left(m_H + m_H \frac{1 - C}{C}\right)\rho_H\rho_w}{m_H\rho_w + m_H \frac{1 - C}{C}\rho_H} = \frac{\rho_H\rho_w}{\rho_H + C(\rho_w - \rho_H)}. \quad (\text{A } 3)$$

The 1,2-hexanediol mass in the droplet is now given by $V_i\rho_i C$, which is constant during the drying process due to the non-volatility of 1,2-hexanediol. Volume V_i is defined as the initial droplet volume. Therefore the amount of water that has evaporated is given by $(V_i - V)\rho_w$, and the total mass of water left in the droplet is the initial mass minus the evaporated mass, $V_i\rho_i(1 - C) - (V_i - V)\rho_w$. By substituting the water mass into (A 1), the mole fraction of water in the droplet is expressed as

$$x_w = \frac{1}{1 + \frac{V_i\rho_i C}{V_i\rho_i(1 - C) - (V_i - V)\rho_w} \frac{M_w}{M_H}}. \quad (\text{A } 4)$$

From the theory, it is predicted that the droplet stops evaporating at the moment when the active mole fraction of water is equal to the relative humidity of the surrounding air, $a_w = \psi_w x_w = RH$. Then we obtain the theoretical final mole fraction $x_w = RH/\psi_w$,

where RH and ψ_w are the relative humidity and activity coefficient of water (Marcolli & Peter 2005), respectively. By substituting x_w into (A 4), we can analytically calculate the theoretical final volume V_f as

$$V_f = \left(\frac{M_w}{M_H} \frac{RH}{\psi_w - RH} + \frac{\rho_w}{\rho_H} \right) \left(\frac{1 - C}{C} + \frac{\rho_w}{\rho_H} \right)^{-1} V_0. \quad (\text{A } 5)$$

REFERENCES

- ALANY, R. G., RADES, T., AGATONOVIC-KUSTRIN, S., DAVIES, N. M. & TUCKER, I. G. 2000 Effects of alcohols and diols on the phase behaviour of quaternary systems. *Intl J. Pharm.* **196** (2), 141–145.
- BATTINO, R. 1971 Volume changes on mixing for binary mixtures of liquids. *Chem. Rev.* **71**, 5–45.
- BENNACER, R. & SEFIANE, K. 2014 Vortices, dissipation and flow transition in volatile binary drops. *J. Fluid Mech.* **749**, 649–665.
- BERKLAAR, R. P., DIETRICH, E., KIP, G. A. M., KOOIJ, E. S., ZANDVLIET, H. J. W. & LOHSE, D. 2014 Exposing nanobubble-like objects to a degassed environment. *Soft Matt.* **10**, 4947–4955.
- BOFFETTA, G. & MAZZINO, A. 2017 Incompressible Rayleigh–Taylor turbulence. *Annu. Rev. Fluid Mech.* **49**, 119–143.
- BRENN, G., DEVIPRASATH, L. J., DURST, F. & FINK, C. 2007 Evaporation of acoustically levitated multi-component liquid droplets. *Intl J. Heat Mass Transfer* **50** (25), 5073–5086.
- CAZABAT, A. M. & GUÉNA, G. 2010 Evaporation of macroscopic sessile droplets. *Soft Matt.* **6**, 2591–2612.
- CHONG, K. L., LI, Y., NG, C. S., VERZICCO, R. & LOHSE, D. 2020 Convection-dominated dissolution for single and multiple immersed sessile droplets. *J. Fluid Mech.* **892**, A21.
- CHRISTY, J. R. E., HAMAMOTO, Y. & SEFIANE, K. 2011 Flow transition within an evaporating binary mixture sessile drop. *Phys. Rev. Lett.* **106**, 205701.
- CHU, S. & PROSPERETTI, A. 2016 Dissolution and growth of a multicomponent drop in an immiscible liquid. *J. Fluid Mech.* **798**, 787–811.
- DANIEL, D., TIMONEN, J. V. I., LI, R., VELLING, S. J. & AIZENBERG, J. 2017 Oleoplaning droplets on lubricated surfaces. *Nat. Phys.* **13**, 1020–1025.
- DEEGAN, R. D., BAKAJIN, O., DUPONT, T. F., HUBER, G., NAGEL, S. R. & WITTEN, T. A. 1997 Capillary flow as the cause of ring stains from dried liquid drops. *Nature* **389** (6653), 827–829.
- DIDDENS, C., TAN, H., LV, P., VERSLUIS, M., KUERTEN, J. G. M., ZHANG, X. & LOHSE, D. 2017 Evaporating pure, binary and ternary droplets: thermal effects and axial symmetry breaking. *J. Fluid Mech.* **823**, 470–497.
- DIETRICH, E., RUMP, M., LV, P., KOOIJ, E. S., ZANDVLIET, H. J. W. & LOHSE, D. 2017 Segregation in dissolving binary-component sessile droplets. *J. Fluid Mech.* **812**, 349–369.
- DIETRICH, E., WILDEMAN, S., VISSER, C. W., HOFHUIS, K., KOOIJ, E. S., ZANDVLIET, H. J. W. & LOHSE, D. 2016 Role of natural convection in the dissolution of sessile droplets. *J. Fluid Mech.* **794**, 45–67.
- EDWARDS, A. M. J., ATKINSON, P. S., CHEUNG, C. S., LIANG, H., FAIRHURST, D. J. & OUALI, F. F. 2018 Density-driven flows in evaporating binary liquid droplets. *Phys. Rev. Lett.* **121**, 184501.
- GAO, A., LIU, J., YE, L., SCHÖNECKER, C., KAPPL, M., BUTT, H.-J. & STEFFEN, W. 2019 Control of droplet evaporation on oil-coated surfaces for the synthesis of asymmetric supraparticles. *Langmuir* **35** (43), 14042–14048.
- GELDERBLOM, H., MARIN, A. G., NAIR, H., VAN HOUSELT, A., LEFFERTS, L., SNOEIJER, J. H. & LOHSE, D. 2011 How water droplets evaporate on a superhydrophobic substrate. *Phys. Rev. E* **83**, 026306.
- HACK, M. A., COSTALONGA, M., SEGERS, T., KARPITSCHKA, S., WIJSHOFF, H. & SNOEIJER, J. H. 2018 Printing wet-on-wet: attraction and repulsion of drops on a viscous film. *Appl. Phys. Lett.* **113** (18), 183701.
- HU, H. & LARSON, R. G. 2002 Evaporation of a sessile droplet on a substrate. *J. Phys. Chem. B* **106**, 1334–1344.

- JAROSIEWICZ, P., CZECHOWSKI, G. & JADZYN, J. 2004 The viscous properties of diols. V. 1,2-hexanediol in water and butanol solutions. *Z. Naturforsch. A* **59**, 559–562.
- KARPITSCHKA, S. 2018 The value of a fading tracer. *J. Fluid Mech.* **856**, 1–4.
- KARPITSCHKA, S., LIEBIG, F. & RIEGLER, H. 2017 Marangoni contraction of evaporating sessile droplets of binary mixtures. *Langmuir* **33**, 4682–4687.
- KIM, H., BOULOGNE, F., UM, E., JACOBI, I., BUTTON, E. & STONE, H. A. 2016 Controlled uniform coating from the interplay of Marangoni flows and surface-adsorbed macromolecules. *Phys. Rev. Lett.* **116** (12), 124501.
- KIM, H. & STONE, H. 2018 Direct measurement of selective evaporation of binary mixtures by dissolving materials. *J. Fluid Mech.* **850**, 769–783.
- KONG, Y. L., TAMARGO, I. A., KIM, H., JOHNSON, B. N., GUPTA, M. K., KOH, T.-W., CHIN, H.-A., STEINGART, D. A., RAND, B. P. & MCALPINE, M. C. 2014 3D printed quantum dot light-emitting diodes. *Nano Lett.* **14** (12), 7017–7023.
- KUANG, M., WANG, L. & SONG, Y. 2014 Controllable printing droplets for high-resolution patterns. *Adv. Mater.* **26** (40), 6950–6958.
- LANGMUIR, I. 1918 The evaporation of small spheres. *Phys. Rev.* **12** (5), 368.
- LI, Y., DIDDENS, C., LV, P., WIJSHOFF, H., VERSLUIS, M. & LOHSE, D. 2019 Gravitational effect in evaporating binary microdroplets. *Phys. Rev. Lett.* **122**, 114501.
- LI, Y., LV, P., DIDDENS, C., TAN, H., WIJSHOFF, H., VERSLUIS, M. & LOHSE, D. 2018 Evaporation-triggered segregation of sessile binary droplet. *Phys. Rev. Lett.* **120**, 224501.
- LOHSE, D. & ZHANG, X. 2015 Surface nanobubble and surface nanodroplets. *Rev. Mod. Phys.* **87**, 981–1035.
- MARCOLLI, C. & PETER, TH. 2005 Water activity in polyol/water systems: new UNIFAC parameterization. *Atmos. Chem. Phys.* **5** (6), 1545–1555.
- MARIN, A. G., GELDERBLOM, H., LOHSE, D. & SNOEIJER, J. H. 2011 Order-to-disorder transition in ring-shaped colloidal stains. *Phys. Rev. Lett.* **107**, 085502.
- MARIN, A., KARPITSCHKA, S., NOGUERA-MARIN, D., CABRERIZO-VILCHEZ, M. A., ROSSI, M., KAHLER, C. J. & VALVERDE, M. A. R. 2019 Solutal marangoni flow as the cause of ring stains from drying salty colloidal drops. *Phys. Rev. Fluids* **4**, 41601.
- NGUYEN, T. A. H. & NGUYEN, A. V. 2012 Increased evaporation kinetics of sessile droplets by using nanoparticles. *Langmuir* **28** (49), 16725–16728.
- OLSON, D. H. & JACOBS, J. W. 2009 Experimental study of Rayleigh–Taylor instability with a complex initial perturbation. *Phys. Fluids* **21**, 034103.
- PARK, J. & MOON, J. 2006 Control of colloidal particle deposit patterns within picoliter droplets ejected by ink-jet printing. *Langmuir* **22** (8), 3506–3513.
- PENG, S., XU, C., HUGHES, T. C. & ZHANG, X. 2014 From nanodroplets by the ouzo effect to interfacial nanolenses. *Langmuir* **30** (41), 12270–12277.
- POPOV, Y. O. 2005 Evaporative deposition patterns: spatial dimensions of the deposit. *Phys. Rev. E* **71**, 036313.
- RAYLEIGH, LORD 1882 Investigation of the character of the equilibrium of an incompressible heavy fluid of variable density. *Proc. Lond. Math. Soc.* **s1-14**, 170.
- RISTENPART, W. D., KIM, P. G., DOMINGUES, C., WAN, J. & STONE, H. A. 2007 Influence of substrate conductivity on circulation reversal in evaporating drops. *Phys. Rev. Lett.* **99** (23), 234502.
- ROMERO, C. M., PÁEZ, M. S., ARTEAGA, J. C., ROMERO, M. A. & NEGRETE, F. 2007 Effect of temperature on the volumetric properties of dilute aqueous solutions of 1,2-hexanediol, 1,5-hexanediol, 1,6-hexanediol, and 2,5-hexanediol. *J. Chem. Thermodyn.* **39**, 1101–1109.
- SCELLENBERGER, F., XIE, J., ENCINAS, N., HARDY, A., KLAPPER, M., PAPADOPOULOS, P., BUTT, H.-J. & VOLLMER, D. 2015 Direct observation of drops on slippery lubricant-infused surfaces. *Soft Matt.* **11**, 7617–7626.
- SHARP, D. H. 1984 An overview of Rayleigh–Taylor instability. *Int. J. Pharm.* **12**, 3–18.
- SOBAC, B. & BRUTIN, D. 2011 Triple-line behavior and wettability controlled by nanocoated substrates: influence on sessile drop evaporation. *Langmuir* **27** (24), 14999–15007.
- SOBAC, B. & BRUTIN, D. 2014 Desiccation of a sessile drop of blood: cracks, folds formation and delamination. *Colloids Surf. A* **448**, 34–44.

- STAUBER, J. M., WILSON, S. K., DUFFY, B. R. & SEFIANE, K. 2014 On the lifetimes of evaporating droplets. *J. Fluid Mech.* **744**, R2.
- STAUBER, J. M., WILSON, S. K., DUFFY, B. R. & SEFIANE, K. 2015 On the lifetimes of evaporating droplets with related initial and receding contact angles. *Phys. Fluids* **27**, 122101.
- TAN, H., DIDDENS, C., LV, P., KUERTEN, J. G. M., ZHANG, X. & LOHSE, D. 2016 Evaporation-triggered microdroplet nucleation and the four life phases of an evaporating ouzo drop. *Proc. Natl Acad. Sci. USA* **113** (31), 8642–8647.
- TAN, H., DIDDENS, C., MOHAMMED, A. A., LI, J., VERSLUIS, M., ZHANG, X. & LOHSE, D. 2019a Microdroplet nucleation by dissolution of a multicomponent drop in a host liquid. *J. Fluid Mech.* **870**, 217–246.
- TAN, H., DIDDENS, C., VERSLUIS, M., BUTT, H.-J., LOHSE, D. & ZHANG, X. 2017 Self-wrapping of an ouzo drop induced by evaporation on a superamphiphobic surface. *Soft Matt.* **13**, 2749–2759.
- TAN, H., WOOH, S., BUTT, H.-J., ZHANG, X. & LOHSE, D. 2019b Porous supraparticle assembly through self-lubricating evaporating colloidal ouzo drops. *Nat. Commun.* **10**, 478.
- TAYLOR, G. 1950 The instability of liquid surfaces when accelerated in a direction perpendicular to their planes. *Proc. R. Soc. Lond.* **201**, 192–196.
- ZHONG, X. & DUAN, F. 2016 Flow regime and deposition pattern of evaporating binary mixture droplet suspended with particles. *Eur. Phys. J. E* **39**, 18.
- ZHOU, Y. 2017a Rayleigh–Taylor and Richtmyer–Meshkov instability induced flow, turbulence, and mixing. I. *Phys. Rep.* **720–722**, 1–136.
- ZHOU, Y. 2017b Rayleigh–Taylor and Richtmyer–Meshkov instability induced flow, turbulence, and mixing. II. *Phys. Rep.* **723–725**, 1–160.