

University of Groningen

Corrigendum to <'The evolution of carbon footprint in the yangtze river delta city cluster during economic transition 2012–2015'>

Xia, Chengqi; Zheng, Heran; Meng, Jing; Li, Shuping; Du, Pengfei; Shan, Yuli

Published in:
Resources, Conservation and Recycling

DOI:
[10.1016/j.resconrec.2022.106418](https://doi.org/10.1016/j.resconrec.2022.106418)

IMPORTANT NOTE: You are advised to consult the publisher's version (publisher's PDF) if you wish to cite from it. Please check the document version below.

Document Version
Publisher's PDF, also known as Version of record

Publication date:
2022

[Link to publication in University of Groningen/UMCG research database](#)

Citation for published version (APA):

Xia, C., Zheng, H., Meng, J., Li, S., Du, P., & Shan, Y. (2022). Corrigendum to <'The evolution of carbon footprint in the yangtze river delta city cluster during economic transition 2012–2015'> *Resources, Conservation and Recycling*, 184, Article 106418. <https://doi.org/10.1016/j.resconrec.2022.106418>

Copyright

Other than for strictly personal use, it is not permitted to download or to forward/distribute the text or part of it without the consent of the author(s) and/or copyright holder(s), unless the work is under an open content license (like Creative Commons).

The publication may also be distributed here under the terms of Article 25fa of the Dutch Copyright Act, indicated by the "Taverne" license. More information can be found on the University of Groningen website: <https://www.rug.nl/library/open-access/self-archiving-pure/taverne-amendment>.

Take-down policy

If you believe that this document breaches copyright please contact us providing details, and we will remove access to the work immediately and investigate your claim.

Downloaded from the University of Groningen/UMCG research database (Pure): <http://www.rug.nl/research/portal>. For technical reasons the number of authors shown on this cover page is limited to 10 maximum.

Contents lists available at [ScienceDirect](https://www.sciencedirect.com)

Resources, Conservation & Recycling

journal homepage: www.elsevier.com/locate/resconrec

Corrigendum

Corrigendum to <'The evolution of carbon footprint in the yangtze river delta city cluster during economic transition 2012–2015'>

Chengqi Xia^a, Heran Zheng^{b,*}, Jing Meng^{c,*}, Shuping Li^d, Pengfei Du^a, Yuli Shan^e^a State Key Laboratory of Environmental Simulation and Pollution Control, School of Environment, Tsinghua University, Beijing, 100084, China^b Industrial Ecology Programme, Department of Energy and Process Engineering, Norwegian University of Science and Technology, Trondheim, 7491, Norway^c The Bartlett School of Sustainable Construction, University College London, London, WC1H0QB, UK^d Institute of Blue and Green Development, Shandong University, Weihai, 264209, China^e Integrated Research for Energy, Environment and Society (IREES), Energy and Sustainability Research Institute Groningen University of Groningen, Groningen, the Netherlands

Resources, Conservation & Recycling 181 (2022) 106,266

The authors regret to inform the readers of an error in a figure and the Supporting Information not uploaded. The color of legends of “Carbon intensity per GDP” and “Value-added rate” in Fig. 5 are reversed.

Here is a corrected version of Fig. 5 (only the color of legends of “Carbon intensity per GDP” and “Value-added rate” in Fig. 5 have been modified):

The authors regret <Fig. 5 Corrigendum and Supporting Information

upload>.

The authors would like to apologise for any inconvenience caused.

DOI of original article: < <https://doi.org/10.1016/j.resconrec.2022.106266> >

Supplementary materials

Supplementary material associated with this article can be found, in the online version, at [doi:10.1016/j.resconrec.2022.106418](https://doi.org/10.1016/j.resconrec.2022.106418).

DOI of original article: <https://doi.org/10.1016/j.resconrec.2022.106266>.

* Corresponding authors.

E-mail addresses: heran.zheng@ntnu.no (H. Zheng), jing.j.meng@ucl.ac.uk (J. Meng).

<https://doi.org/10.1016/j.resconrec.2022.106418>

Available online 27 May 2022

0921-3449/© 2022 Elsevier B.V. All rights reserved.

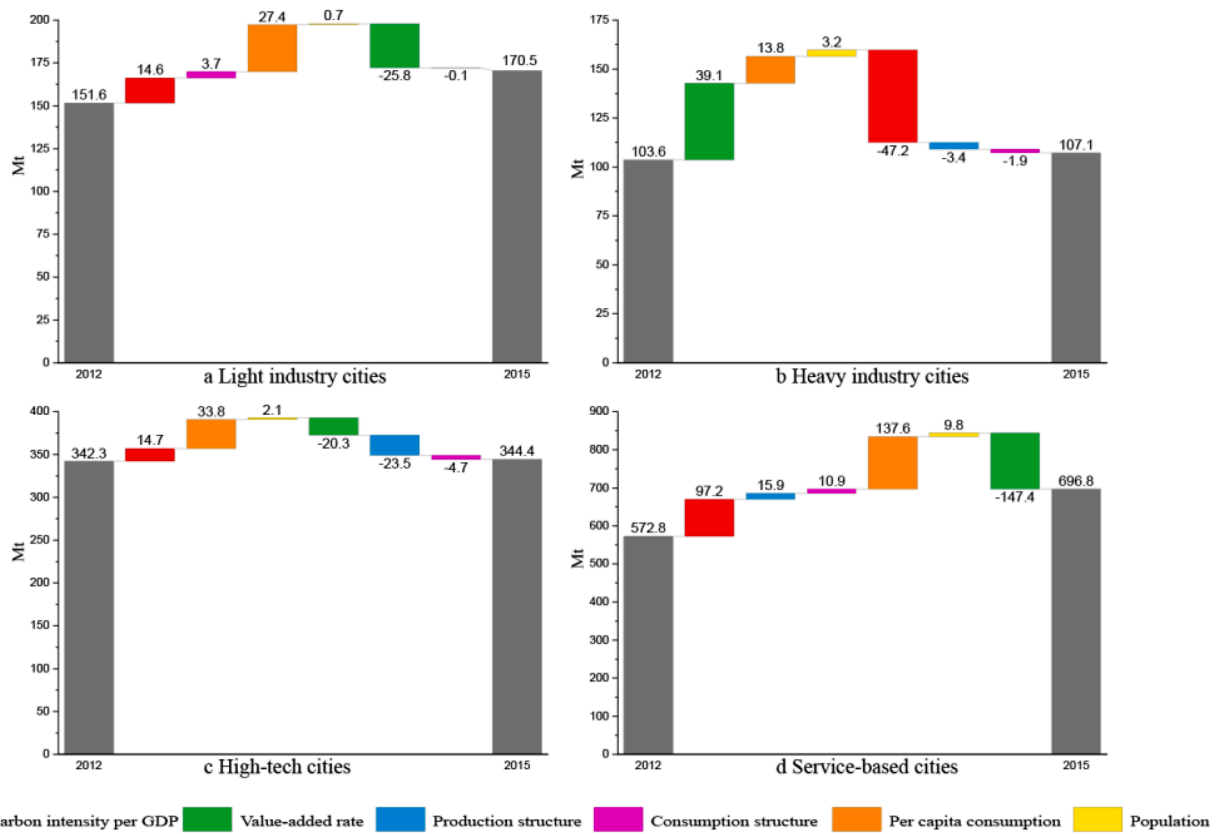


Fig. 5. The contribution of different driving factors to the changes in carbon emissions of the four city types including light industry cities (a), heavy industry cities (b), high-tech cities (c) and service-based cities (d).