

University of Groningen

**Correction to: The intertidal mudflats of Barr Al Hikman, Sultanate of Oman, as feeding, reproduction and nursery grounds for brachyuran crabs**

Bom, Roeland A.; van Gils, Jan A.; Molenaar, Karen; Kwarteng, Andy Y.; Victor, Reginald; Folmer, Eelke O.

*Published in:*  
Hydrobiologia

*DOI:*  
[10.1007/s10750-020-04485-7](https://doi.org/10.1007/s10750-020-04485-7)

**IMPORTANT NOTE: You are advised to consult the publisher's version (publisher's PDF) if you wish to cite from it. Please check the document version below.**

*Document Version*  
Publisher's PDF, also known as Version of record

*Publication date:*  
2021

[Link to publication in University of Groningen/UMCG research database](#)

*Citation for published version (APA):*

Bom, R. A., van Gils, J. A., Molenaar, K., Kwarteng, A. Y., Victor, R., & Folmer, E. O. (2021). Correction to: The intertidal mudflats of Barr Al Hikman, Sultanate of Oman, as feeding, reproduction and nursery grounds for brachyuran crabs. *Hydrobiologia*, 848(3), 751-752. <https://doi.org/10.1007/s10750-020-04485-7>

**Copyright**

Other than for strictly personal use, it is not permitted to download or to forward/distribute the text or part of it without the consent of the author(s) and/or copyright holder(s), unless the work is under an open content license (like Creative Commons).

The publication may also be distributed here under the terms of Article 25fa of the Dutch Copyright Act, indicated by the "Taverne" license. More information can be found on the University of Groningen website: <https://www.rug.nl/library/open-access/self-archiving-pure/taverne-amendment>.

**Take-down policy**

If you believe that this document breaches copyright please contact us providing details, and we will remove access to the work immediately and investigate your claim.

Downloaded from the University of Groningen/UMCG research database (Pure): <http://www.rug.nl/research/portal>. For technical reasons the number of authors shown on this cover page is limited to 10 maximum.



CORRECTION

## Correction to: The intertidal mudflats of Barr Al Hikman, Sultanate of Oman, as feeding, reproduction and nursery grounds for brachyuran crabs

Roeland A. Bom · Jan A. van Gils · Karen Molenaar · Andy Y. Kwarteng ·  
Reginald Victor · Eelke O. Folmer

Accepted: 2 December 2020 / Published online: 22 December 2020  
© Springer Nature Switzerland AG 2020

**Correction to: Hydrobiologia (2020) 847:4295–4309**  
<https://doi.org/10.1007/s10750-020-04418-4>

The correct version of Fig. 4 and its caption is published here.

In the above mentioned publication, incorrect values for *P. segnis* are shown on the right hand side of Fig. 4.

---

The original article can be found online at <https://doi.org/10.1007/s10750-020-04418-4>.

---

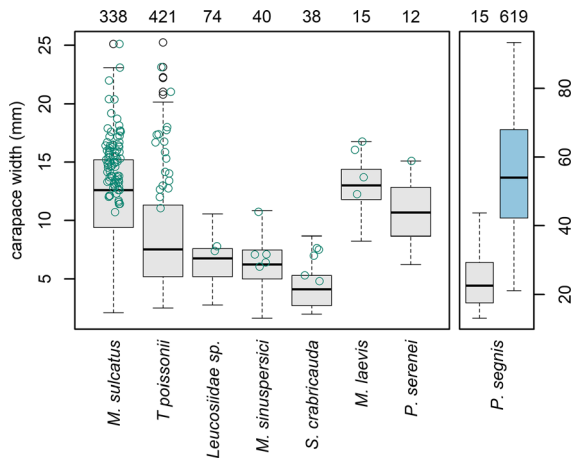
R. A. Bom (✉) · J. A. van Gils · K. Molenaar  
Department of Coastal Systems, NIOZ Royal Netherlands  
Institute for Sea Research, P.O. Box 59,  
1790 AB Den Burg, Texel, The Netherlands  
e-mail: roeland.bom@nioz.nl

E. O. Folmer  
Ecospace, Ecological Research and Environmental  
Informatics, Graspieper 1, 8532 AT Lemmer, The  
Netherlands

R. A. Bom · A. Y. Kwarteng  
Remote Sensing and GIS Center, Sultan Qaboos,  
University, P.O. Box 33, PC 123 Al Khod, Oman

J. A. van Gils  
Conservation Ecology Group, Groningen Institute for  
Evolutionary Life Sciences (GELIFES), University of  
Groningen, PO Box 11103, 9700 CC Groningen, The  
Netherlands

R. Victor  
Department of Biology, College of Science, P.O. Box 36,  
PC 123 Al Khod, Oman



**Publisher's Note** Springer Nature remains neutral with regard to jurisdictional claims in published maps and institutional affiliations.

**Fig. 4** Boxplots showing carapace width for the eight most abundant crab species across four winters. Thick horizontal lines show medians, top and bottom lines of the box show the 25th and 75th percentiles respectively, whiskers show maximum and minimum values or 1.5 times the interquartile range (whichever is the smaller). For *P. segnis* grey box show crabs sampled on the grid and the blue box shows crabs collected in the intertidal water column. The green points represent the individual ovigerous female crabs (note the absence of these in *P. segnis*). Numbers on top show sample size