

# Contribution of Somatic Ras/Raf/Mitogen-Activated Protein Kinase Variants in the Hippocampus in Drug-Resistant Mesial Temporal Lobe Epilepsy

Sattar Khoshkhoo, MD; Yilan Wang, BS; Yasmine Chahine, BS; E. Zeynep Erson-Omay, PhD; Stephanie M. Robert, MD, PhD; Emre Kiziltug, BS; Eyyemisi C. Damisah, MD; Carol Nelson-Williams, MS; Guangya Zhu, PhD; Wenna Kong, BS; August Yue Huang, PhD; Edward Stronge, BS; H. Westley Phillips, MD; Brian H. Chhouk, BS; Sara Bizzotto, PhD; Ming Hui Chen, MD, MMSc; Thiuni N. Adikari, BMSc; Zimeng Ye, MS; Tom Witkowski, BSc; Dulcie Lai, PharmD, PhD; Nadine Lee; Julie Lokan, MBBS; Ingrid E. Scheffer, MBBS, PhD; Samuel F. Berkovic, MD; Shozeb Haider, PhD; Michael S. Hildebrand, PhD; Edward Yang, MD, PhD; Murat Gunel, MD; Richard P. Lifton, MD, PhD; R. Mark Richardson, MD, PhD; Ingmar Blümcke, MD; Sanda Alexandrescu, MD; Anita Huttner, MD; Erin L. Heinzen, PharmD, PhD; Jidong Zhu, PhD; Annapurna Poduri, MD, MPH; Nihal DeLanerolle, DPhil, DSc; Dennis D. Spencer, MD; Eunjung Alice Lee, PhD; Christopher A. Walsh, MD, PhD; Kristopher T. Kahle, MD, PhD

**IMPORTANCE** Mesial temporal lobe epilepsy (MTLE) is the most common focal epilepsy subtype and is often refractory to antiseizure medications. While most patients with MTLE do not have pathogenic germline genetic variants, the contribution of postzygotic (ie, somatic) variants in the brain is unknown.

**OBJECTIVE** To test the association between pathogenic somatic variants in the hippocampus and MTLE.

**DESIGN, SETTING, AND PARTICIPANTS** This case-control genetic association study analyzed the DNA derived from hippocampal tissue of neurosurgically treated patients with MTLE and age-matched and sex-matched neurotypical controls. Participants treated at level 4 epilepsy centers were enrolled from 1988 through 2019, and clinical data were collected retrospectively. Whole-exome and gene-panel sequencing (each genomic region sequenced more than 500 times on average) were used to identify candidate pathogenic somatic variants. A subset of novel variants was functionally evaluated using cellular and molecular assays. Patients with nonlesional and lesional (mesial temporal sclerosis, focal cortical dysplasia, and low-grade epilepsy-associated tumors) drug-resistant MTLE who underwent anterior medial temporal lobectomy were eligible. All patients with available frozen tissue and appropriate consents were included. Control brain tissue was obtained from neurotypical donors at brain banks. Data were analyzed from June 2020 to August 2022.

**EXPOSURES** Drug-resistant MTLE.

**MAIN OUTCOMES AND MEASURES** Presence and abundance of pathogenic somatic variants in the hippocampus vs the unaffected temporal neocortex.

**RESULTS** Of 105 included patients with MTLE, 53 (50.5%) were female, and the median (IQR) age was 32 (26-44) years; of 30 neurotypical controls, 11 (36.7%) were female, and the median (IQR) age was 37 (18-53) years. Eleven pathogenic somatic variants enriched in the hippocampus relative to the unaffected temporal neocortex (median [IQR] variant allele frequency, 1.92 [1.5-2.7] vs 0.3 [0-0.9];  $P = .01$ ) were detected in patients with MTLE but not in controls. Ten of these variants were in *PTPN11*, *SOS1*, *KRAS*, *BRAF*, and *NF1*, all predicted to constitutively activate Ras/Raf/mitogen-activated protein kinase (MAPK) signaling. Immunohistochemical studies of variant-positive hippocampal tissue demonstrated increased Erk1/2 phosphorylation, indicative of Ras/Raf/MAPK activation, predominantly in glial cells. Molecular assays showed abnormal liquid-liquid phase separation for the *PTPN11* variants as a possible dominant gain-of-function mechanism.

**CONCLUSIONS AND RELEVANCE** Hippocampal somatic variants, particularly those activating Ras/Raf/MAPK signaling, may contribute to the pathogenesis of sporadic, drug-resistant MTLE. These findings may provide a novel genetic mechanism and highlight new therapeutic targets for this common indication for epilepsy surgery.

JAMA Neurol. 2023;80(6):578-587. doi:10.1001/jamaneurol.2023.0473  
Published online May 1, 2023.

← Editorial page 546

+ Supplemental content

**Author Affiliations:** Author affiliations are listed at the end of this article.

**Corresponding Authors:** Christopher A. Walsh, MD, PhD, Division of Genetics and Genomics, Boston Children's Hospital, Howard Hughes Medical Institute, Harvard Medical School, Three Blackfan Cir, Boston, MA 02115 ([christopher.walsh@childrens.harvard.edu](mailto:christopher.walsh@childrens.harvard.edu)); Kristopher T. Kahle, MD, PhD, Pediatric Neurosurgery, Massachusetts General Hospital, Harvard Medical School, 15 Parkman St, Boston, MA 02114 ([kahle.kristopher@mgh.harvard.edu](mailto:kahle.kristopher@mgh.harvard.edu)).

Epilepsy is a debilitating chronic neurologic condition that affects 1 in 26 people (3% to 4% lifetime risk).<sup>1</sup> The most common focal epilepsy subtype, mesial temporal lobe epilepsy (MTLE), is often resistant to antiseizure medications and requires neurosurgical intervention (eg, anterior temporal lobectomy) in roughly one-third of patients, with attendant morbidity.<sup>2</sup> While MTLE has been associated with initial precipitating insults, such as prolonged febrile seizures<sup>3</sup> and trauma,<sup>4</sup> its etiology is debated and its pathophysiology is poorly understood. With a few exceptions,<sup>5-8</sup> whole-exome sequencing (WES) and gene-panel sequencing (GPS) studies of blood-derived and buccal-derived DNA have had minimal success in identifying genetic determinants of focal epilepsies, such as MTLE,<sup>9-14</sup> which typically occur in individuals without a family history of the disease.

Recently, postzygotic (ie, somatic) variants have emerged as a major cause of focal epilepsies associated with focal cortical dysplasia (FCD).<sup>15</sup> Pathogenic somatic variants in FCD are present in only a fraction of cells (1% to 10% typically), creating a mosaic with admixed variant (variant-positive) and non-variant cells. The level of mosaicism, as defined by variant allele frequency (VAF), in focal epilepsy usually correlates with the size and brain regional distribution of the lesion.<sup>15</sup> Most somatic variants identified in FCD are seen in samples with type 2B histopathological classification and result in activation of PI3K/Akt/mammalian target of rapamycin (mTOR) pathway genes that typically produce a lesion visible on magnetic resonance imaging.<sup>15</sup> However, somatic variants in non-PI3K/Akt/mTOR genes can also cause focal epilepsies, without always producing a radiographically evident dysplasia, even at high VAFs.<sup>16</sup>

In this study, we tested the hypothesis that somatic variants enriched in the hippocampus are an important pathogenic mechanism underlying drug-resistant MTLE. We used deep WES and GPS to identify somatic variants in the hippocampal tissue from neurosurgically treated patients with MTLE and neurotypical controls.

## Methods

### Oversight and Study Procedures

The main study group included patients with MTLE at Yale-New Haven Hospital, New Haven, Connecticut; Boston Children's Hospital, Boston, Massachusetts; and Austin Hospital, Heidelberg, Australia. Written informed consent was obtained from all patients or their guardians with local institutional review board or ethics committee approval. All research performed with samples obtained from patients was approved by the Institutional Review Board at Boston Children's Hospital.

### Study Participants

This case-control study was designed to investigate the association between somatic genetic variants and MTLE. Patients with nonlesional and lesional (mesial temporal sclerosis [MTS], FCD, and low-grade epilepsy-associated tumors [LEATs]), including ganglioglioma, dysembryoplastic neuroepithelial

## Key Points

**Question** Do postzygotic (ie, somatic) variants in the hippocampus contribute to mesial temporal lobe epilepsy (MTLE) risk?

**Findings** In this genetic association study of 105 neurosurgically treated patients with MTLE and 30 neurotypical brain donors, 11 pathogenic somatic variants enriched in the hippocampus were detected in unrelated patients with MTLE but not in the controls. Ten of these variants were in *PTPN11*, *SOS1*, *KRAS*, *BRAF*, and *NF1*, all predicted to constitutively activate Ras/Raf/mitogen-activated protein kinase (MAPK) signaling.

**Meaning** In this study, hippocampal somatic variants, in particular those activating Ras/Raf/MAPK signaling, may contribute to sporadic, drug-resistant MTLE.

tumor, and multinodular and vacuolating neuronal tumor) drug-resistant MTLE who underwent anterior mesial temporal lobe resection were included. All non-LEAT primary brain tumors were excluded. Neurotypical control brain tissue was obtained from the National Institutes of Health NeuroBioBank at the University of Maryland, Baltimore, and the University of Miami, Miami, Florida, as well as the European Epilepsy Brain Bank, Erlangen, Germany.

### Target Capture, Sequencing, and Somatic Variant Analysis

WES and GPS (each genomic region sequenced more than 500 times on average) was performed on DNA extracted from fresh-frozen brain tissue or nonbrain tissue to detect somatic variants, which were independently validated with amplicon sequencing or droplet digital polymerase chain reaction.

### Cellular and Molecular Studies

Cell lines were transfected with wild-type and variant human gene constructs and underwent immunoblotting and liquid-liquid phase separation (LLPS) assays. Additional histopathology experiments were performed on archival paraffin-embedded tissue as needed.

### Statistical Analysis

Pairwise comparisons were made with Fisher exact test, *t* test, Wilcoxon rank-sum and signed rank tests, and the binomial test; 2-tailed *P* values less than .05 were considered statistically significant. Pathway enrichment analysis<sup>17</sup> and gene set overrepresentation analysis were evaluated using the hypergeometric test; false discovery rate-adjusted *P* values less than .05 were considered statistically significant. Python version 3.7.4 (Python Software Foundation) was used for all statistical analysis. Additional details are provided in eMethods in Supplement 1.

## Results

### Patients

Surgical samples were obtained from 105 patients who underwent anterior medial temporal lobectomy for medication-refractory MTLE from 1988 through 2019. Of 105 included

Table. Pathogenic Somatic Variants in Mesial Temporal Lobe Epilepsy

Patient No./sex/age at surgery, y	Clinical diagnosis	Gene	Variant coordinates	Protein change	VAF, %	
					Sequencing (validation) in the hippocampus	Validation in the temporal neocortex
1/Male/30s	MTS	<i>PTPN11</i>	NM_002834.5: c.1507G>A	p.G503R	2.4 (1.4-1.5)	<0.2
2/Male/30s	MTS with LEAT	<i>PTPN11</i>	NM_002834.4: c.1508G>T	p.G503V	2.9 (2.1-2.5)	<0.2
3/Male/20s	MTS	<i>PTPN11</i>	NM_002834.5: c.417G>C	p.E139N	3.3 (3.3)	0.8-0.9
4/Male/20s	MTS	<i>NF1</i>	NM_001042492.3: c.654 + 1G>A; germline NM_001042492.3: c.499_502del	Altered splicing p.C167fs	2.2 (2.0)	0.9
5/Female/20s	MTS with LEAT	<i>NF1</i>	NM_001042492.3: c.6852-6855del; germline NM_001042492.3: c.6904C>T	p.Y2285fs p.Q2302*	6.3 (6.3)	NA
6/Male/40s	MTS	<i>KRAS</i>	NM_004985.5: c.35G>A	p.G12D	1.2 (0.9-0.9)	<0.2
7/Male/<10	MTS with FCD1A	<i>KRAS</i>	NM_004985.5: c.35G>T <sup>a</sup>	p.G12V	19.6 (18)	NA
8/Female/50s	MTS	<i>SOS1</i>	NM_005633.4: c.810-813del	p.M269del	1.2 (0.52-0.88)	0.6
9/Female/10s	MTS with LEAT	<i>BRAF</i>	NM_004333.6: c.1799T>A	p.V600E	7.9 (7.82-7.9)	NA
10/Male/<10	MTS with FCD2A	<i>BRAF</i>	NM_004333.6: c.1797A>G	p.K601E	31.3 (17.8)	8.8
11/Female/50s	MTS	<i>SF3B1</i>	NM_012433.3: c.2098A>G	p.K700E	1.7 (1.5-1.7)	<0.2

Abbreviations: FCD, focal cortical dysplasia; LEAT, low-grade epilepsy-associated tumor; MTS, mesial temporal sclerosis; NA, not available; VAF, variant allele frequency.

<sup>a</sup> Has been previously reported in a separate cohort consisting of malformations of cortical development.<sup>23</sup>

patients with MTLE, 53 (50.5%) were female, and the median (IQR) age was 32 (26-44) years; of 30 neurotypical controls, 11 (36.7%) were female, and the median (IQR) age was 37 (18-53) years. Clinical histopathologic findings included MTS only (n = 91), MTS with LEATs (n = 4), MTS with FCD (n = 2), and non-MTS (n = 8). Detailed clinical and demographic information is provided in eTables 1 and 2 in Supplement 1 and eTable 1 in Supplement 2. All patients had hippocampal tissue available. A subset also had paired temporal neocortical tissue (n = 89) and blood (n = 27) collected. Only fresh-frozen specimens were used for WES or GPS and validation.

### Pathogenic Somatic Variant Discovery and Brain Regional Enrichment Analysis

Hippocampus-derived DNA from patients was sequenced via WES or GPS, with each genomic region sequenced more than 500 times on average (eFigure 1 in Supplement 1), followed by somatic variant calling. After careful bioinformatic measures to improve the accuracy of the somatic variant call set, all the variants previously reported as pathogenic or likely pathogenic in ClinVar<sup>18</sup> were experimentally tested with amplicon sequencing and/or droplet digital polymerase chain reaction. Of 21 candidate variants tested, 11 were validated. All validated pathogenic or likely pathogenic somatic variants detected in MTLE samples, and their corresponding VAFs, are shown in the Table. Among the tissue samples with pathogenic somatic variants, 5 cases had MTS with LEATs or FCD pathology, with 2.5% to 23.6% mean VAFs. The remaining 6 cases with MTS-only pathology had significantly lower mean VAFs, ranging from 0.8% to 3.3%. We did not identify pathogenic somatic variants in the small non-MTS group.

Since low VAF somatic variants may have been acquired at later developmental stages and be restricted to a small brain region, we also investigated the presence of pathogenic so-

matic variants in the unaffected temporal neocortex when paired tissue was available. For all the variants that could be tested in both brain regions (n = 8), the pathogenic variants were undetectable (less than 0.2% VAF in 4 patients) or less common (4 patients) in the temporal neocortex (Table), suggesting that variants were selectively enriched in affected hippocampal tissue (median [IQR] VAF, 1.92 [1.5-2.7] vs 0.3 [0-0.9]; *P* = .01).

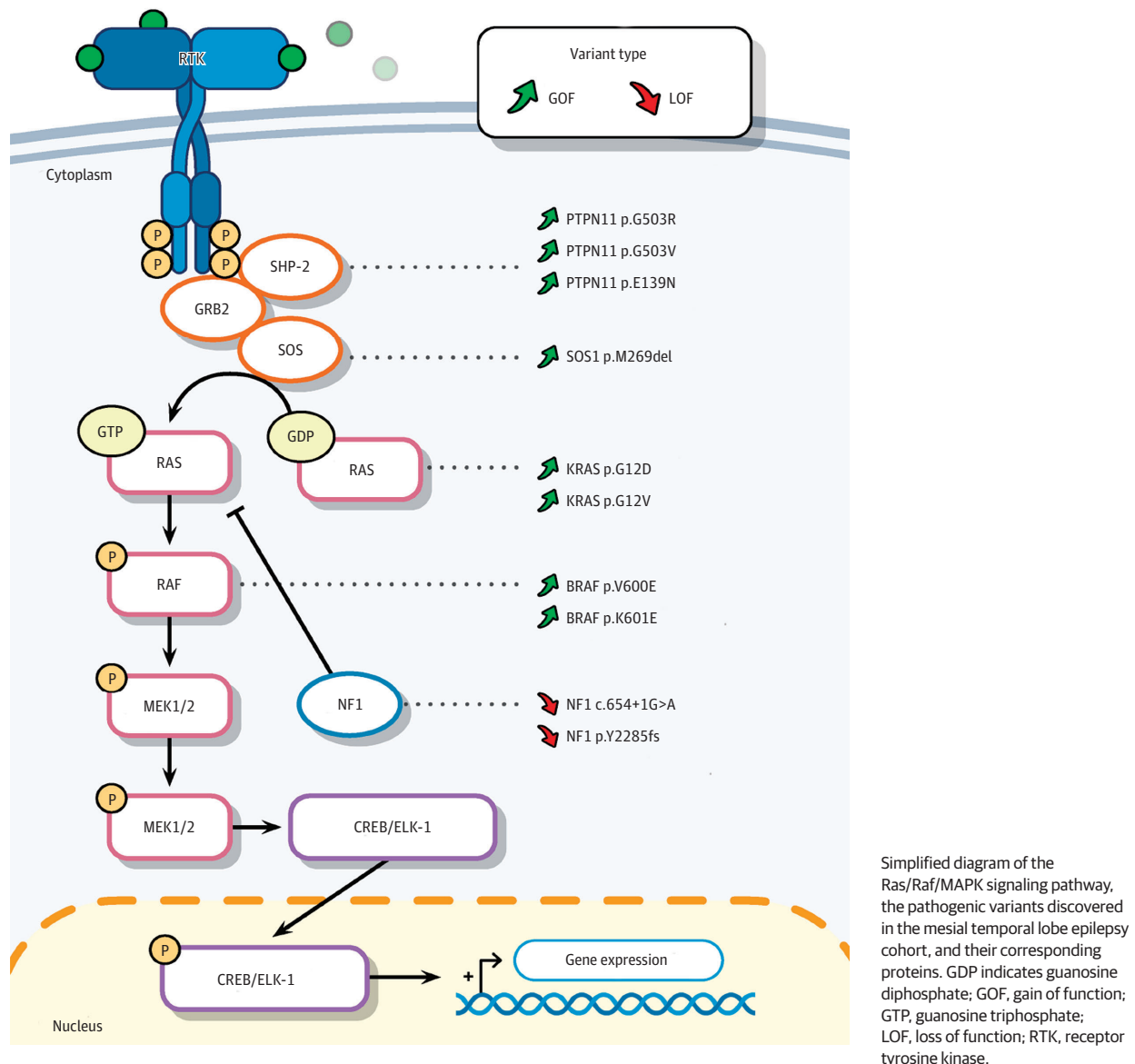
Notably, the *PTPN11* (c.1507G>A and c.1508G>T), *KRAS* (c.35G>A and c.35G>T), and *BRAF* (c.1797A>G and c.1799T>A) variants are all located in mutational hot spots for cancer and neurodevelopmental disorders.<sup>19-21</sup> However, except for *KRAS* c.35G>T and *BRAF* c.1799T>A, which have been reported in FCDs<sup>22,23</sup> and LEATs,<sup>24</sup> to our knowledge, none of the other somatic variants have been previously described in focal epilepsies. Both patients with *NF1* somatic variants carried a diagnosis of neurofibromatosis type 1 and had known germline variants in the *NF1* gene (c.499\_502del and c.6904C>T) based on clinical testing. Our findings of coexistent germline and somatic variants in patients with MTLE are consistent with the established double-hit mechanism in *NF1*-associated pathology.<sup>25</sup>

To test whether pathogenic somatic variants exist in the hippocampus of neurotypical individuals, we performed WES on a cohort of 30 control hippocampal samples (eFigure 1 in Supplement 1). Since normal hippocampal tissue is rarely surgically resected, we used postmortem hippocampal dissections from individuals with no reported neurologic disease. In contrast to the MTLE cohort, we did not identify any pathogenic or likely pathogenic variants in the control samples.

### Clinical Findings in Patients With Activating Ras/Raf/MAPK Somatic Variants

All but 1 variant (*SF3B1* p.K700E) in the Table are present in Ras/Raf/mitogen-activated protein kinase (MAPK) pathway genes

**Figure 1. Somatic Variants Activating Ras/Raf/Mitogen-Activated Protein Kinase (MAPK) Pathway Genes in Mesial Temporal Lobe Epilepsy**



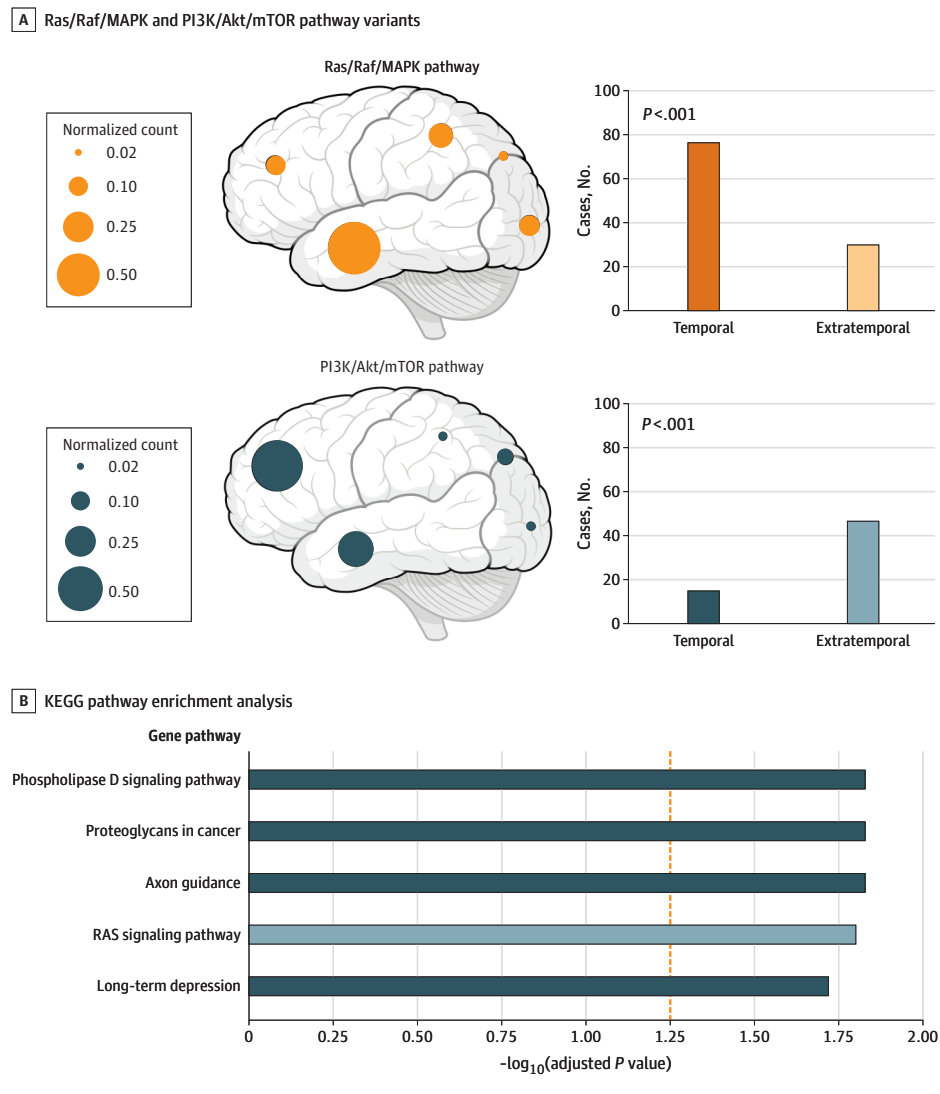
(Figure 1A). Notably, all the variants are predicted to increase Ras/Raf/MAPK signaling via gain of function of pathway activators (*PTPN11*, *KRAS*, *SOS1*, or *BRAF*) or loss of function of a pathway repressor (*NF1*). To determine whether patients with activating Ras/Raf/MAPK variants have unique clinical characteristics, we independently reviewed all available clinical data, magnetic resonance images, and histopathology slides for this subgroup. All variant-positive patients were seizure-free for more than 2 years after surgery (Engel class IA or International League Against Epilepsy class 1), with significantly increased likelihood of Engel class IA outcome compared with the rest of the cohort (eFigure 2 in Supplement 1). All the patients with pathogenic Ras/Raf/MAPK variants had evidence of MTS; in 5 patients, that was the only major imaging and histopathologic finding (eFigure 3A-P in Supplement 1) while the remaining half

exhibited additional findings consistent with FCDs or LEATs (eFigure 4 in Supplement 1). To further rule out the possibility of radiographically and histopathologically undetected LEATs, we performed additional CD34 staining—a diagnostic marker for LEATs<sup>24</sup>—in 4 samples with MTS-only pathology for which tissue was available. We did not observe higher than background-level CD34 staining (eFigure 3M-P in Supplement 1), further confirming that Ras/Raf/MAPK variants can be present at low VAFs in the affected temporal lobe in the absence of a glioneuronal tumor detected radiographically or histopathologically.

#### Enrichment of Activating Ras/Raf/MAPK Pathway Variants in MTLE

While the contribution of somatic variants to MTLE has not been previously described, to our knowledge, most FCD-

**Figure 2. Enrichment of Ras/Raf/Mitogen-Activated Protein Kinase (MAPK) Pathway Variants in the Temporal Lobe and in Mesial Temporal Lobe Epilepsy (MTLE)**



associated somatic variants reported to date are in PI3K/Akt/mTOR pathway genes,<sup>15</sup> whereas LEAT-associated variants often involve the Ras/Raf/MAPK pathway.<sup>24</sup> To further investigate the association between somatic genotype and brain regional specificity, we performed a focused retrospective review of the FCD and LEAT literature. Our analysis demonstrated a significant predilection of somatic Ras/Raf/MAPK variants for the temporal lobe, while PI3K/Akt/mTOR variants showed an extratemporal predominance (Figure 2A). Given that the hippocampus is the primary affected region in MTLE, our findings lend further support to the hypothesis that somatic variants in the Ras/Raf/MAPK pathway arising specifically in the temporal lobe confer risk for focal epilepsies.

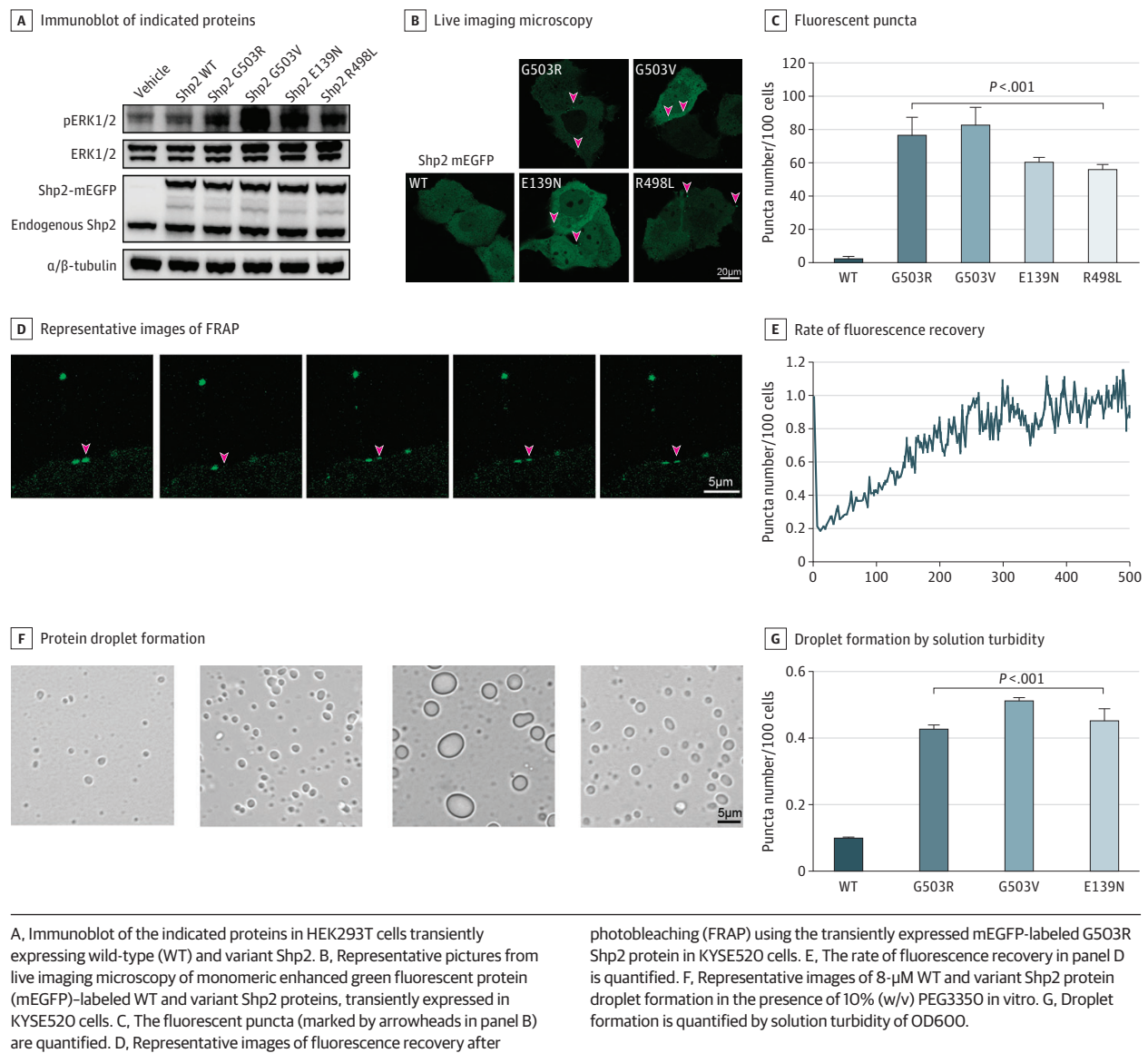
Since our initial detection of pathogenic somatic variants relied on prior reporting of a specific variant in ClinVar, we next performed pathway enrichment analysis on all the filtered variants from our call set that were predicted to be pathogenic (eTables 2 and 3 in Supplement 2). Consistent with our initial

observation, for somatic variants in the MTLE cohort, the Ras/Raf/MAPK signaling pathway was among the most highly enriched pathways (Figure 2B). Enrichment in this pathway was not seen in the control samples. Furthermore, we showed that pathogenicity-enriched variants in another curated Ras/Raf/MAPK gene set (eTable 3 in Supplement 1) are overrepresented in the MTLE cohort and not the control samples. Notably, we did not see an overrepresentation of PI3K/Akt/mTOR genes (eTable 3 in Supplement 1) in the MTLE cohort, further supporting the notion that focal epilepsies in the temporal lobe share a genetic etiology distinct from focal extratemporal epilepsies.

#### Mechanism of Ras/Raf/MAPK Overactivation in MTLE-Associated *PTPN11* Somatic Variants

Germline *PTPN11* variants, which are known causes of Noonan syndrome and related disorders, appear to enhance protein tyrosine phosphatase enzymatic activity through an acquired



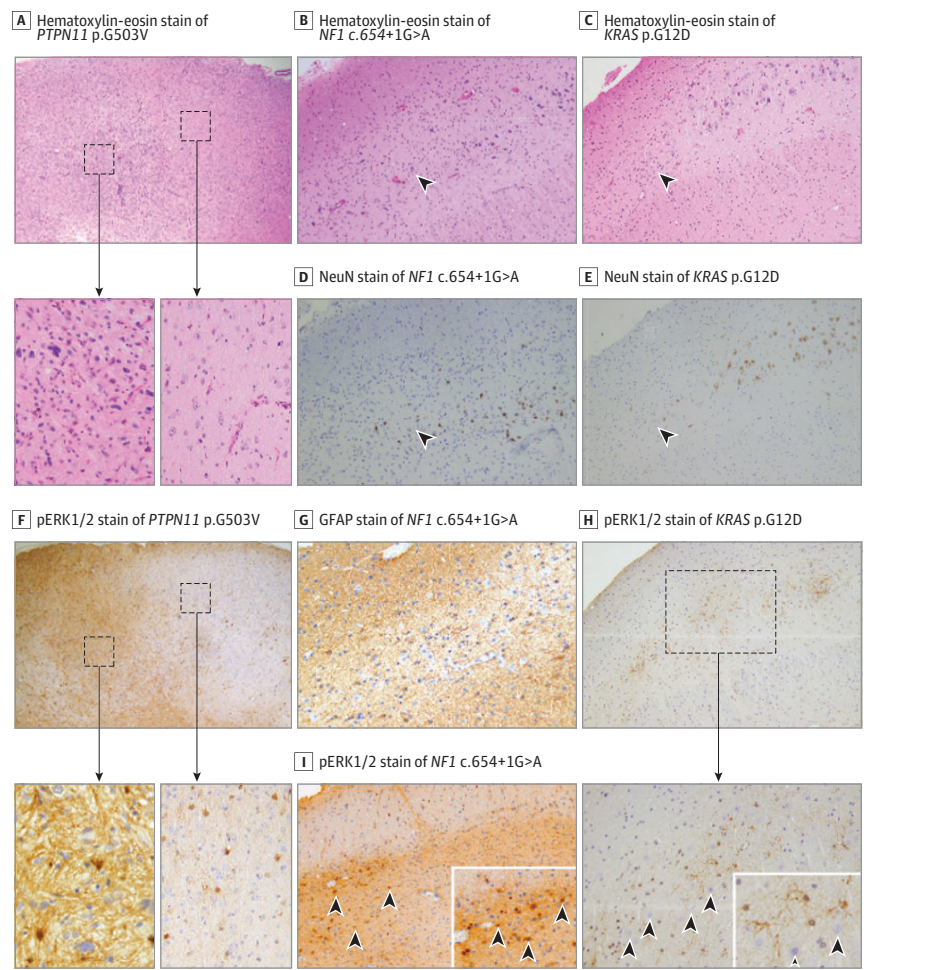
**Figure 3. Mechanisms of Ras/Raf/Mitogen-Activated Protein Kinase (MAPK) Overactivity in Mesial Temporal Lobe Epilepsy–Associated Variant Shp2 Proteins**

capability of LLPS of the variant Shp2 protein encoded by *PTPN11* variants.<sup>26</sup> Since this gene, to our knowledge, has not been previously associated with focal epilepsy, we evaluated the functional impact of MTLE-associated *PTPN11* variants by transiently expressing the human wild type (wild-type Shp2) and variant (variant Shp2) constructs in HEK293T cells and then performing immunoblotting to assess the degree of Erk1/2 (a downstream effector of the Ras/Raf/MAPK pathway) phosphorylation. Compared with cells expressing the wild-type Shp2 protein, we detected increased phosphorylated Erk1/2 (pErk1/2) in cells expressing variant Shp2 proteins (Figure 3A), indicating increased phosphatase activity of all the Shp2 variants, consistent with constitutive activation.

To determine the mechanism through which MTLE-associated *PTPN11* variants enhance phosphatase activity,

we tested whether these variants also undergo LLPS. We transiently expressed monomeric enhanced green fluorescent protein (mEGFP)-labeled Shp2 proteins (wild type, G503R, G503V, E139N, and R498L) in KYSE520 cells. Remarkably, the Shp2 variants formed discrete puncta in cells, whereas the wild-type protein was dispersed throughout the cell (Figure 3B and C). Fluorescence recovery after photobleaching experiments showed that mEGFP-labeled G503R Shp2 puncta recovered within minutes after photobleaching (Figure 3D and E), indicating that the variant Shp2 proteins formed condensates that exhibited dynamic liquidlike behavior. To explore whether variant Shp2 proteins could also undergo LLPS in vitro, we expressed and purified recombinant Shp2 variant and wild-type proteins. The in vitro droplet formation assay<sup>26</sup> showed that the variant Shp2 proteins formed more and larger drop-

**Figure 4. Evidence of Erk1/2 Overactivation in Mesial Temporal Lobe Epilepsy Tissue Harboring Ras/Raf/Mitogen-Activated Protein Kinase Variants**



Each column shows histopathologic images from 1 sample. A and F, A low-grade epilepsy-associated tumor. Original magnification  $\times 40$  for image and  $\times 400$  for inset. A, Hematoxylin-eosin staining with areas of hypercellularity corresponding to the tumor (inset 1) intermixed with normal brain tissue (inset 2). F, pErk1/2 staining of the corresponding regions is seen in insets 1 and 2. B to E and G, Representative mesial temporal sclerosis-only samples with neuronal dropout in the cornu ammonis region of the hippocampus (panels B to E) but uniform distribution of glial cells across the same region (panel G). The black arrowheads demarcate cornu ammonis neuronal loss. Original magnification  $\times 200$ . H, Original magnification  $\times 40$  for image and  $\times 200$  for inset. I, Original magnification  $\times 200$ . H and I, Erk1/2 phosphorylation (pErk1/2) colocalizes to regions with highest degree of neuronal loss and sclerosis. The arrowheads point to cells with increased pErk1/2 staining, mostly represented by apparent glia (panel I, inset). The black arrowheads point to neurons that have relatively low pErk1/2 staining (panel H, inset).

lets compared with the wild-type protein in the presence of 10% (w/v) PEG3350, which was quantified using solution turbidity of OD600 (Figure 3F and G). These findings indicate that the MTLT-associated variant Shp2 proteins undergo LLPS in cells and in vitro through a dominant gain-of-function mechanism that activates downstream Ras/Raf/MAPK signaling.

#### Ras/Raf/MAPK Overactivation in Affected Human MTLT Surgical Tissue

Given the enrichment of activating Ras/Raf/MAPK somatic variants in MTLT, the variant-positive cells could play a key and potentially causal role in hippocampal epileptogenesis. In the absence of allele-specific antibodies for most of the variants found in our cohort, we used immunohistochemical staining for pErk1/2 (a proxy for Ras/Raf/MAPK pathway overactivation<sup>27</sup>) to determine the identity and localization of variant-positive cells. In brain tissue from the patient with LEAT associated with *PTPN11* p.G503V, we observed substantial correlation between tumor density (Figure 4A) and the degree of pErk1/2 staining (Figure 4F), supporting the validity of this strategy in localizing variant-positive cells. Using this approach in 2 patients with *NF1* c.654 + 1G>A and *KRAS* p.G12D

variants and MTS-only pathology, we observed that hippocampal subregions with the greatest neuronal loss showed the highest density of pErk1/2 staining (Figure 4B to E, H, and I). Most cells with intense pErk1/2 staining in areas of neuronal loss showed glial morphology (Figure 4G to I), which could not be explained by the differences in cell type-specific gene expression in the adult human hippocampus (eFigure 5 in Supplement 1).

## Discussion

We identified pathogenic somatic variants enriched in the hippocampus, where seizures in MTLT typically originate, in 11 patients with drug-resistant MTLT, with none found in the neurotypical controls. Strikingly, all but 1 of these variants were predicted to activate Ras/Raf/MAPK signaling, providing strong evidence that they may contribute to MTLT risk, analogous to the role of somatic PI3K/Akt/mTOR variants in FCD. The finding that even MTLT cases without evidence of dysplasia or neoplasia carry pathogenic somatic variants in the Ras/Raf/MAPK pathway could significantly alter our understanding of,

and the therapeutic options for, this most common indication for epilepsy surgery.

The regional specificity of epilepsy-associated Ras/Raf/MAPK pathway variants in the temporal lobe, vs PI3K/Akt/mTOR pathway variants in the extratemporal cortex, recalls cancers where common driver variations are characteristic to particular cell and tissue types.<sup>19</sup> Hence, the regional genetic specificity of focal epilepsies may represent the major differences in cellular architecture and proliferative properties between different brain regions. The higher VAFs of Ras/Raf/MAPK variants in the hippocampus compared with the lateral temporal neocortex parallels the pattern of ongoing neurogenesis, which continues after birth only in the dentate gyrus,<sup>28</sup> and may contribute to this enrichment. Febrile seizures and head trauma, well-established risk factors for MTLE,<sup>3,4</sup> stimulate this dentate gyrus proliferation in animal models.<sup>29,30</sup> A similar process in humans could create a proliferative or survival advantage for cells harboring activating Ras/Raf/MAPK pathway variants, as has been described in cancer,<sup>31</sup> and could provide a potential mechanism for how these risk factors may contribute to MTLE risk.

We also observed a significant association between the lower VAF of pathogenic variants and the absence of dysplasia or neoplasia on imaging and histopathology. This finding implies that patients with MTS-only pathology may have acquired their variants at later developmental stages<sup>15</sup> and therefore have fewer variant-positive cells. Patients with MTS with LEATs or FCD pathology, in contrast, may have acquired their variants earlier, resulting in higher fractions of variant-positive cells and diagnosis of drug-resistant epilepsy at a younger age, as illustrated by patients 7 and 10 (Table), who underwent epilepsy surgery as infants. Most patients in our cohort are adults, and because of limitations of retrospective access to clinical information, we were unable to test the association between the age of onset or epilepsy duration with VAF. In addition to VAF, other factors may contribute to the histopathology associated with Ras/Raf/MAPK variants. For example, patients 1 and 2 both have *PTPN11* variants with similar VAFs that change the same amino acid, but a greater degree of Ras-MAPK activation by *PTPN11* p.G503V may account for MTS with LEATs or MTS with FCD pathology as opposed to MTS-only pathology with p.G503R. The cellular lineage of variant-positive cells is likely an independent predictor of pathology as well.<sup>32</sup> Consequently, somatic Ras/Raf/MAPK pathway variants may give rise to a spectrum of temporal lobe lesions depending on the developmental time point at which they were acquired, their molecular mechanisms, and the cell types of variant-positive cells, all associated with drug-resistant MTLE.

To our knowledge, the mechanism through which somatic Ras/Raf/MAPK variants contribute to epileptogenesis is

yet to be determined, although our functional data support the role of Ras/Raf/MAPK overactivation in this process. While all variant-positive patients exhibited histopathologic evidence of MTS, we did not identify pathogenic somatic variants in most patients with MTS, and very few patients with non-MTS histopathology were enrolled in the study; therefore, the exact association between MTS and pathogenic somatic variants remains unclear based on our data. The precise cell type-specific effects of somatic Ras/Raf/MAPK pathway variants in MTLE are likely quite complicated and may evolve over time, given that these variants can cause different phenotypes in distinct cell types, contexts, and brain regions.<sup>33,34</sup> Our human genetic findings provide the impetus to explore these hypotheses in future work with animal models.

Our study highlights the importance of incorporating molecular testing into the MTLE diagnostic algorithm. Although it is not known yet whether MTLE-associated somatic variants can be detected less invasively, perhaps presurgical evaluation of cell-free DNA in cerebrospinal fluid<sup>35,36</sup> or genomic DNA in stereoelectroencephalography electrodes<sup>37</sup> could guide further management steps, such as surgical approaches vs genotype-driven therapeutics. For example, in patients with left MTLE who may be at risk of significant verbal memory or language decline with an extensive resection, or in patients who do not receive surgery because of patient/physician perception<sup>38</sup> or limited resources,<sup>39</sup> a genotype-driven pharmacological approach may provide an additional treatment option. Since many targeted treatments for Ras/Raf/MAPK activation are already in various stages of clinical testing in cancers,<sup>40</sup> our findings offer the potential to leverage some of these agents to develop the first generation of targeted therapies for molecularly characterized MTLE.

### Limitations

This study has limitations. Despite the high sequencing depth, somatic variant detection was mostly limited to VAFs greater than 1% due to technical factors. Since cell loss is a prominent feature of MTS, pathogenic variants in the hippocampus may be present in VAFs less than 1%, suggesting that the burden of pathogenic somatic variants in MTLE could be much higher than what is reported here.

### Conclusions

Hippocampal somatic variants, particularly those activating Ras/Raf/MAPK signaling, may contribute to the pathogenesis of sporadic, drug-resistant MTLE. These findings may provide a novel genetic mechanism and highlight new therapeutic targets for this common indication for epilepsy surgery.

#### ARTICLE INFORMATION

Accepted for Publication: December 31, 2022.

Published Online: May 1, 2023.  
doi:10.1001/jamaneurol.2023.0473

Open Access: This is an open access article distributed under the terms of the [CC-BY License](https://creativecommons.org/licenses/by/4.0/).  
© 2023 Khoshkhoo S et al. *JAMA Neurology*.

**Author Affiliations:** Department of Neurology, Brigham and Women's Hospital, Harvard Medical School, Boston, Massachusetts (Khoshkhoo); Division of Genetics and Genomics, Manton Center for Orphan Disease Research, Boston Children's Hospital, Boston, Massachusetts (Khoshkhoo, Wang, Chahine, Huang, Stronge, Phillips, Chhouk, Chen, N. Lee, E. A. Lee, Walsh, Kahle); Broad

Institute of MIT and Harvard, Cambridge, Massachusetts (Khoshkhoo, Huang, Phillips, E. A. Lee, Walsh, Kahle); Program in Biological and Biomedical Sciences, Harvard Medical School, Boston, Massachusetts (Wang); Department of Neurosurgery, Yale University School of Medicine, New Haven, Connecticut (Erson-Omay, Robert, Kiziltug, Damisah, Gunel, DeLanerolle, Spencer);



Department of Genetics, Yale University School of Medicine, New Haven, Connecticut (Nelson-Williams, Lifton); Interdisciplinary Research Center on Biology and Chemistry, Shanghai Institute of Organic Chemistry, Chinese Academy of Sciences, Shanghai, China (G. Zhu, Kong, J. Zhu); Department of Pediatrics, Harvard Medical School, Boston, Massachusetts (Huang, E. A. Lee); Harvard Medical School, Boston, Massachusetts (Stronge); Department of Neurosurgery, David Geffen School of Medicine, University of California, Los Angeles (Phillips); Sorbonne University, Paris Brain Institute (ICM), National Institute of Health and Medical Research (INSERM), National Center for Scientific Research (CNRS), Paris, France (Bizzotto); Department of Medicine (Austin Health), University of Melbourne, Heidelberg, Australia (Adikari, Ye, Witkowski, Scheffer, Berkovic, Hildebrand); Division of Pharmacotherapy and Experimental Therapeutics, Eshelman School of Pharmacy, University of North Carolina at Chapel Hill (Lai, Heinzen); Department of Anatomical Pathology, Austin Health, Heidelberg, Australia (Lokan); Murdoch Children's Research Institute, Parkville, Australia (Scheffer, Hildebrand); Florey Institute of Neuroscience and Mental Health, Heidelberg, Australia (Scheffer); Department of Pediatrics, University of Melbourne, Royal Children's Hospital, Parkville, Australia (Scheffer); Bladin-Berkovic Comprehensive Epilepsy Program, Department of Neurology, Austin Health, Heidelberg, Australia (Scheffer, Berkovic); Department of Pharmaceutical and Biological Chemistry, University College London School of Pharmacy, London, United Kingdom (Haider); Department of Radiology, Boston Children's Hospital, Harvard Medical School, Boston, Massachusetts (Yang); Laboratory of Human Genetics and Genomics, The Rockefeller University, New York, New York (Lifton, Kahle); Department of Neurosurgery, Massachusetts General Hospital, Boston (Richardson); Department of Neuropathology, University Hospitals Erlangen, Erlangen, Germany (Blümcke); Epilepsy Center, Cleveland Clinic, Cleveland, Ohio (Blümcke); Department of Pathology, Boston Children's Hospital, Harvard Medical School, Boston, Massachusetts (Alexandrescu); Department of Pathology, Yale University School of Medicine, New Haven, Connecticut (Huttner); Department of Genetics, School of Medicine, University of North Carolina at Chapel Hill (Heinzen); Epilepsy Genetics Program, Division of Epilepsy and Neurophysiology, Department of Neurology, Boston Children's Hospital, Harvard Medical School, Boston, Massachusetts (Poduri); Department of Neurology and Pediatrics, Harvard Medical School, Boston, Massachusetts (Walsh); Allen Discovery Center for Human Brain Evolution, Boston Children's Hospital, Harvard Medical School, Boston, Massachusetts (Walsh); Howard Hughes Medical Institute, Boston, Massachusetts (Walsh); Department of Neurosurgery, Boston Children's Hospital, Boston, Massachusetts (Kahle).

**Author Contributions:** Drs Khoshkhoo and Kahle had full access to all of the data in the study and take responsibility for the integrity of the data and the accuracy of the data analysis. Dr Khoshkhoo and Ms Wang are co-first authors. Drs E. Lee, Walsh, and Kahle are co-senior authors. *Study concept and design:* Khoshkhoo, Wang, Stronge, Phillips, Scheffer, Lifton, Poduri, Walsh, Kahle.

*Acquisition, analysis, or interpretation of data:*

All authors.

*Drafting of the manuscript:* Khoshkhoo, Wang, Chahine, Robert, Kiziltug, Damisah, Kong, Chhouk, Adikari, N. Lee, Haider, Huttner, E. Lee, Walsh, Kahle.

*Critical revision of the manuscript for important intellectual content:* Khoshkhoo, Wang,

Erson-Omay, Robert, Nelson-Williams, G. Zhu, Huang, Stronge, Phillips, Bizzotto, Chen, Ye, Witkowski, Lai, Lokan, Scheffer, Berkovic, Hildebrand, Yang, Gunel, Lifton, Richardson, Blümcke, Alexandrescu, Huttner, Heinzen, J. Zhu, Poduri, DeLanerolle, Spencer, E. Lee, Walsh, Kahle. *Statistical analysis:* Khoshkhoo, Wang, Erson-Omay, Huang, Phillips, Witkowski, N. Lee, Haider, J. Zhu, E. Lee, Kahle.

*Obtained funding:* Lifton, Poduri, Walsh, Kahle.

*Administrative, technical, or material support:* Khoshkhoo, Chahine, Erson-Omay, Robert, Kiziltug, Damisah, Nelson-Williams, G. Zhu, Stronge, Chhouk, Adikari, Ye, Scheffer, Berkovic, Haider, Hildebrand, Yang, Gunel, Lifton, Blümcke, Alexandrescu, Huttner, Poduri, DeLanerolle, Spencer, E. Lee, Walsh, Kahle.

*Study supervision:* Damisah, Scheffer, Haider, Blümcke, E. Lee, Walsh, Kahle.

**Conflict of Interest Disclosures:** Drs Khoshkhoo, Walsh, and Kahle have a patent for the causal role of Ras/Raf/MAPK pathway overactivation in focal epilepsy pending (planned filing). Dr Stronge has received grants from National Institute of General Medical Sciences during the conduct of the study. Dr Phillips has received grants from the National Institute of Neurological Disorders and Stroke during the conduct of the study. Dr Scheffer has received grants from the Australia National Health and Medical Research Council and Australia Medical Research Future Fund during the conduct of the study; personal fees from Atheneum Partners, Biohaven Pharmaceuticals, Care Beyond Diagnosis, Epilepsy Consortium, Bellberry, BioMarin, Biocodex, Chiesi, Eisai, Encoded Therapeutics, Epygenyx, GlaxoSmithKline, GW Pharmaceuticals, Knopp Biosciences, Liva Nova, National Research Foundation, Ovid Therapeutics, Takeda Pharmaceuticals, UCB, Xenon Pharmaceuticals, and Zynerva Pharmaceuticals outside the submitted work; is a trial investigator for Anavex Life Sciences, Cerebral Therapeutics, Cereval Therapeutics, Eisai, Encoded Therapeutics, Epygenyx, Marinus Pharmaceuticals, Ovid Therapeutics, Takeda Pharmaceuticals, UCB, Ultragenyx, Xenon Pharmaceuticals, Zogenix, and Zynerva Pharmaceuticals; has a patent for WO/2013/059884 with royalties paid, a patent for WO2009/086591 pending, and a patent for WO/2006/133508 licensed to Bionomics. Dr Yang has received grants from the National Institutes of Health during the conduct of the study. Dr Lifton has received personal fees from Roche outside the submitted work. Dr Walsh has received grants from Howard Hughes Medical Institute, National Institutes of Neurological Disease and Stroke, Allen Frontiers Group/Allen Foundation, Simons Foundation, and Templeton Foundation during the conduct of the study as well as personal fees from Maze Therapeutics and Flagship Pioneering outside the submitted work; and has a patent pending (planned filing). Dr Kahle has a patent pending. No other disclosures were reported.

**Funding/Support:** Dr Khoshkhoo was supported by grants R25-NS065743 and KO8-NS128272 from

the National Institutes of Health and a Doris Duke Physician Scientist Fellowship. Mr Stronge was supported by grant T32-GM007753 from the National Institutes of Health. Dr Phillips was supported by grant R25-NS079198 from the National Institutes of Health. Dr Bizzotto was supported by the Manton Center for Orphan Disease Research at Boston Children's Hospital and is supported by a European Commission's Horizon 2020 Research and Innovation Programme Marie Skłodowska-Curie Actions Individual Fellowship (grant agreement 101026484). Dr Scheffer was supported by Australia National Health and Medical Research Council Investigator Grant 1172897. Dr Berkovic was supported by Australia National Health and Medical Research Council Investigator Grant 1196637. Dr Hildebrand was supported by Australia National Health and Medical Research Council Ideas Grant 2012287. Drs Berkovic and Hildebrand were supported by Australia National Health and Medical Research Council Project Grants 1129054 and 1079058. Dr Yang was supported by grants R01-NS035129 and R01-NS094596 from the National Institutes of Health. Drs Heinzen, Lai, and some of the sequence data generation was supported by the grant R01-NS094596 from the National Institutes of Health. Dr Lee was supported by the Suh Kyungbae Foundation, National Institutes of Health grants DP2-AG072437 and R01-AG070921, and the Allen Discovery Center program. Dr Walsh was supported by grant R01-NS035129 from the National Institutes of Health and by the Allen Frontiers Program. Dr Walsh is an Investigator of the Howard Hughes Medical Institute. Dr Kahle was supported by the Yale-Rockefeller Centers for Mendelian Genomics, grants R01-NS109358, R01-NS111029, and R01-NS117609 from the National Institutes of Health, the Simons Foundation, March of Dimes, Hydrocephalus Association, and Rudi Schulte Research Institute.

**Role of the Funder/Sponsor:** The funders had no role in the design and conduct of the study; collection, management, analysis, and interpretation of the data; preparation, review, or approval of the manuscript; and decision to submit the manuscript for publication.

**Data Sharing Statement:** See Supplement 3.

**Additional Contributions:** We thank the following individuals for their valuable contributions, including assistance with obtaining brain tissue for research, discussion of experimental findings, and comments on the manuscript: Zinan Zhou, PhD (Boston Children's Hospital, Boston, Massachusetts), Michael B. Miller, MD, PhD (Brigham and Women's Hospital, Boston, Massachusetts), Javier Ganz, PhD (Boston Children's Hospital), Shyam Akula, PhD (Harvard Medical School, Boston, Massachusetts), Abbe Lai, MS, CGC (Boston Children's Hospital), and Jennifer E. Neil, MS, CGC (Boston Children's Hospital). We thank the following brain tissue repositories for providing brain tissue for this study: Core Repository for Neurologic Disorders at Boston Children's Hospital, Boston, Massachusetts; The European Epilepsy Brain Bank, Erlangen, Germany; University of Maryland Brain and Tissue Bank, a brain and tissue repository of NeuroBioBank, Baltimore; and Brain Endowment Bank at University of Miami, a brain and tissue repository of NeuroBioBank, Miami, Florida.

None of the contributors were compensated for their work.

## REFERENCES

- Hesdorffer DC, Logroscino G, Benn EKT, Katri N, Cascino G, Hauser WA. Estimating risk for developing epilepsy: a population-based study in Rochester, Minnesota. *Neurology*. 2011;76(1):23-27. doi:10.1212/WNL.0b013e318204a36a
- Lamberink HJ, Otte WM, Blümcke I, Braun KPJ; European Epilepsy Brain Bank Writing Group; Study Group; European Reference Network EpiCARE. Seizure outcome and use of antiepileptic drugs after epilepsy surgery according to histopathological diagnosis: a retrospective multicentre cohort study. *Lancet Neurol*. 2020;19(9):748-757. doi:10.1016/S1474-4422(20)30220-9
- Mathern GW, Pretorius JK, Babb TL. Influence of the type of initial precipitating injury and at what age it occurs on course and outcome in patients with temporal lobe seizures. *J Neurosurg*. 1995;82(2):220-227. doi:10.3171/jns.1995.82.2.0220
- Diaz-Arrastia R, Agostini MA, Frol AB, et al. Neurophysiologic and neuroradiologic features of intractable epilepsy after traumatic brain injury in adults. *Arch Neurol*. 2000;57(11):1611-1616. doi:10.1001/archneur.57.11.1611
- Dibbens LM, de Vries B, Donatello S, et al. Mutations in *DEPDC5* cause familial focal epilepsy with variable foci. *Nat Genet*. 2013;45(5):546-551. doi:10.1038/ng.2599
- Kalachikov S, Evgrafov O, Ross B, et al. Mutations in *LGII* cause autosomal-dominant partial epilepsy with auditory features. *Nat Genet*. 2002;30(3):335-341. doi:10.1038/ng832
- Dazzo E, Fanciulli M, Serioli E, et al. Heterozygous reelin mutations cause autosomal-dominant lateral temporal epilepsy. *Am J Hum Genet*. 2015;96(6):992-1000. doi:10.1016/j.ajhg.2015.04.020
- Scheffer IE, Bhatia KP, Lopes-Cendes I, et al. Autosomal dominant frontal epilepsy misdiagnosed as sleep disorder. *Lancet*. 1994;343(8896):515-517. doi:10.1016/S0140-6736(94)91463-X
- Hwang SK, Hirose S. Genetics of temporal lobe epilepsy. *Brain Dev*. 2012;34(8):609-616. doi:10.1016/j.braindev.2011.10.008
- Perucca P, Scheffer IE, Harvey AS, et al. Real-world utility of whole exome sequencing with targeted gene analysis for focal epilepsy. *Epilepsy Res*. 2017;131:1-8. doi:10.1016/j.epilepsyres.2017.02.001
- Wong JKL, Gui H, Kwok M, et al. Rare variants and de novo variants in mesial temporal lobe epilepsy with hippocampal sclerosis. *Neuro Genet*. 2018;4(3):e245. doi:10.1212/NXG.0000000000000245
- Hildebrand MS, Myers CT, Carvill GL, et al. A targeted resequencing gene panel for focal epilepsy. *Neurology*. 2016;86(17):1605-1612. doi:10.1212/WNL.00000000000002608
- Tsai MH, Chan CK, Chang YC, et al. Molecular genetic characterization of patients with focal epilepsy using a customized targeted resequencing gene panel. *Front Neurol*. 2018;9:515. doi:10.3389/fneur.2018.00515
- Feng YCA, Howrigan DP, Abbott LE, et al; Epi25 Collaborative. Ultra-rare genetic variation in the epilepsies: a whole-exome sequencing study of 17,606 individuals. *Am J Hum Genet*. 2019;105(2):267-282. doi:10.1016/j.ajhg.2019.05.020
- D'Gama AM, Woodworth MB, Hossain AA, et al. Somatic mutations activating the mTOR pathway in dorsal telencephalic progenitors cause a continuum of cortical dysplasias. *Cell Rep*. 2017;21(13):3754-3766. doi:10.1016/j.celrep.2017.11.106
- Winawer MR, Griffin NG, Samanamud J, et al. Somatic *SLC35A2* variants in the brain are associated with intractable neocortical epilepsy. *Ann Neurol*. 2018;83(6):1133-1146. doi:10.1002/ana.25243
- Bu D, Luo H, Huo P, et al. KOBAS-i: intelligent prioritization and exploratory visualization of biological functions for gene enrichment analysis. *Nucleic Acids Res*. 2021;49(W1):W317-W325. doi:10.1093/nar/gkab447
- Landrum MJ, Lee JM, Benson M, et al. ClinVar: improving access to variant interpretations and supporting evidence. *Nucleic Acids Res*. 2018;46(D1):D1062-D1067. doi:10.1093/nar/gkx1153
- Cook JH, Melloni GEM, Gulhan DC, Park PJ, Haigis KM. The origins and genetic interactions of *KRAS* mutations are allele- and tissue-specific. *Nat Commun*. 2021;12(1):1808. doi:10.1038/s41467-021-22125-z
- Hill KS, Roberts ER, Wang X, et al. *PTPNI1* plays oncogenic roles and is a therapeutic target for *BRAF* wild-type melanomas. *Mol Cancer Res*. 2019;17(2):583-593. doi:10.1158/1541-7786.MCR-18-0777
- Davies H, Bignell GR, Cox C, et al. Mutations of the *BRAF* gene in human cancer. *Nature*. 2002;417(6892):949-954. doi:10.1038/nature00766
- Pepi C, de Palma L, Trivisano M, et al. The role of *KRAS* mutations in cortical malformation and epilepsy surgery: a novel report of nevus sebaceous syndrome and review of the literature. *Brain Sci*. 2021;11(6):793. doi:10.3390/brainsci11060793
- Lai D, Gade M, Yang E, et al. Somatic variants in diverse genes leads to a spectrum of focal cortical malformations. *Brain*. 2022;145(8):2704-2720. doi:10.1093/brain/awac117
- Blümcke I, Aronica E, Becker A, et al. Low-grade epilepsy-associated neuroepithelial tumours—the 2016 WHO classification. *Nat Rev Neurol*. 2016;12(12):732-740. doi:10.1038/nrneurol.2016.173
- Serra E, Puig S, Otero D, et al. Confirmation of a double-hit model for the *NF1* gene in benign neurofibromas. *Am J Hum Genet*. 1997;61(3):512-519. doi:10.1086/515504
- Zhu G, Xie J, Kong W, et al. Phase separation of disease-associated *SHP2* mutants underlies MAPK hyperactivation. *Cell*. 2020;183(2):490-502.e18. doi:10.1016/j.cell.2020.09.002
- Nikolaev SI, Vetiska S, Bonilla X, et al. Somatic activating *KRAS* mutations in arteriovenous malformations of the brain. *N Engl J Med*. 2018;378(3):250-261. doi:10.1056/NEJMoa1709449
- Boldrini M, Fulmore CA, Tarrt AN, et al. Human hippocampal neurogenesis persists throughout aging. *Cell Stem Cell*. 2018;22(4):589-599.e5. doi:10.1016/j.stem.2018.03.015
- Parent JM, Yu TW, Leibowitz RT, Geschwind DH, Sloviter RS, Lowenstein DH. Dentate granule cell neurogenesis is increased by seizures and contributes to aberrant network reorganization in the adult rat hippocampus. *J Neurosci*. 1997;17(10):3727-3738. doi:10.1523/JNEUROSCI.17-10-03727.1997
- Dash PK, Mach SA, Moore AN. Enhanced neurogenesis in the rodent hippocampus following traumatic brain injury. *J Neurosci Res*. 2001;63(4):313-319. doi:10.1002/1097-4547(20010215)63:4<313::AID-JNRR1025>3.0.CO;2-4
- Martincorena I, Fowler JC, Wabik A, et al. Somatic mutant clones colonize the human esophagus with age. *Science*. 2018;362(6417):911-917. doi:10.1126/science.aau3879
- Koh HY, Kim SH, Jang J, et al. *BRAF* somatic mutation contributes to intrinsic epileptogenicity in pediatric brain tumors. *Nat Med*. 2018;24(11):1662-1668. doi:10.1038/s41591-018-0172-x
- Li S, Mattar P, Dixit R, et al. RAS/ERK signaling controls proneural genetic programs in cortical development and gliomagenesis. *J Neurosci*. 2014;34(6):2169-2190. doi:10.1523/JNEUROSCI.4077-13.2014
- Noebels J. Pathway-driven discovery of epilepsy genes. *Nat Neurosci*. 2015;18(3):344-350. doi:10.1038/nn.3933
- Ye Z, Chatterton Z, Pflueger J, et al. Cerebrospinal fluid liquid biopsy for detecting somatic mosaicism in brain. *Brain Commun*. 2021;3(1):fcaa235. doi:10.1093/braincomms/fcaa235
- Kim S, Baldassari S, Sim NS, et al. Detection of brain somatic mutations in cerebrospinal fluid from refractory epilepsy patients. *Ann Neurol*. 2021;89(6):1248-1252. doi:10.1002/ana.26080
- Ye Z, Bennett MF, Neal A, et al. Somatic mosaic pathogenic variant gradient detected in trace brain tissue from stereo-EEG depth electrodes. *Neurology*. 2022;99(23):1036-1041. doi:10.1212/WNL.00000000000021469
- Dewar SR, Pieters HC. Perceptions of epilepsy surgery: a systematic review and an explanatory model of decision-making. *Epilepsy Behav*. 2015;44:171-178. doi:10.1016/j.yebeh.2014.12.027
- Warf B. Surgery for epilepsy: the need for global acceptance and access. *Lancet Neurol*. 2016;15(9):898-899. doi:10.1016/S1474-4422(16)30141-7
- Hymowitz SG, Malek S. Targeting the MAPK Pathway in RAS Mutant Cancers. *Cold Spring Harb Perspect Med*. 2018;8(11):a031492. doi:10.1101/cshperspect.a031492