

University of Northern Colorado

Scholarship & Creative Works @ Digital UNC

Fall Kickoff

University Libraries

2021

Michener Building Assessment

Darren Ilett

Dave White

Follow this and additional works at: <https://digscholarship.unco.edu/kickoff>

Recommended Citation

Ilett, Darren and White, Dave, "Michener Building Assessment" (2021). *Fall Kickoff*. 11.
<https://digscholarship.unco.edu/kickoff/11>

This Article is brought to you for free and open access by the University Libraries at Scholarship & Creative Works @ Digital UNC. It has been accepted for inclusion in Fall Kickoff by an authorized administrator of Scholarship & Creative Works @ Digital UNC. For more information, please contact Jane.Monson@unco.edu.

Michener Building

Assessment

More
study
rooms

Light

Warm and
inviting

coffee!!!

COMFY
CHAIRS

Welcoming

Collaborative
space

Cozy

Quiet
space for
studying

UL Assessment Committee

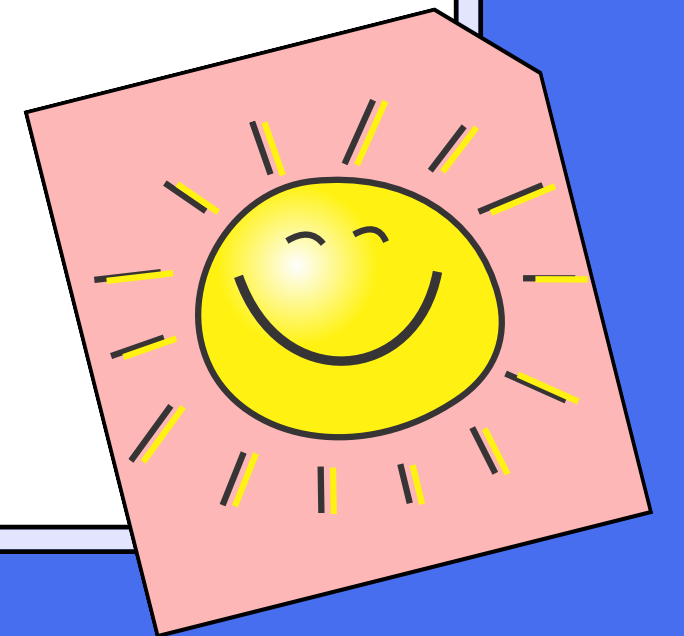
o o o o



Jayne Blodgett
Annie Epperson
Natasha Floersch
Wendy Highby
Darren Ilett*
Laura Uglean Jackson*
Dave White

*Co-chairs

**Who loves the current layout
of Michener Library so much,
you wouldn't change a thing?**



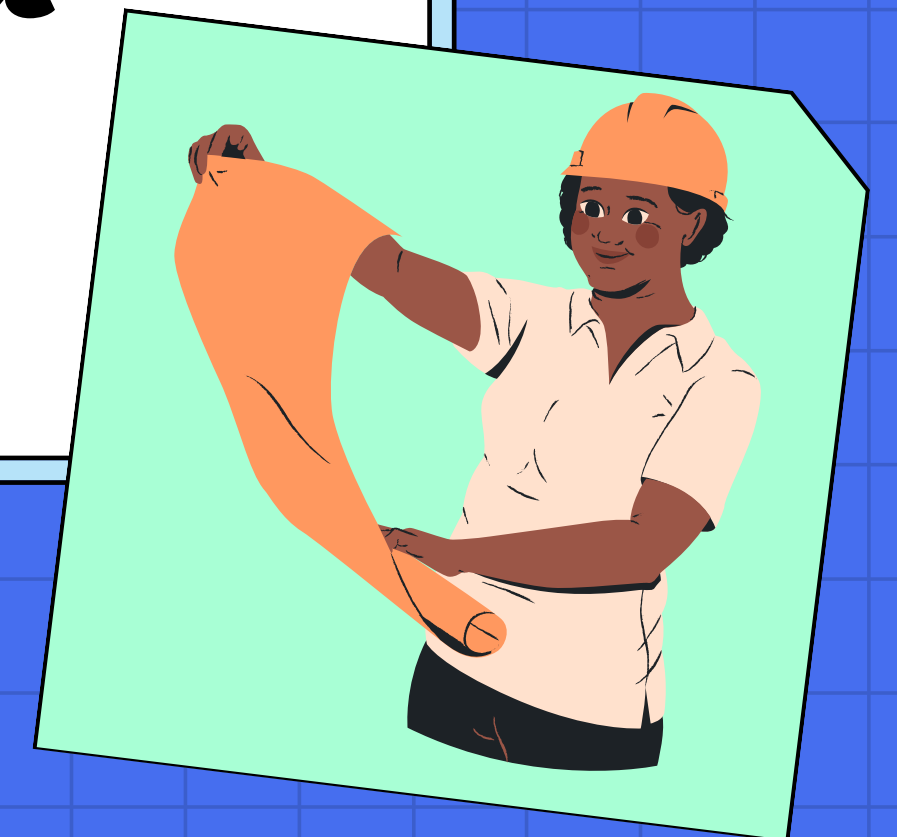
**Who has ideas about how to
make it better?**

o o o o



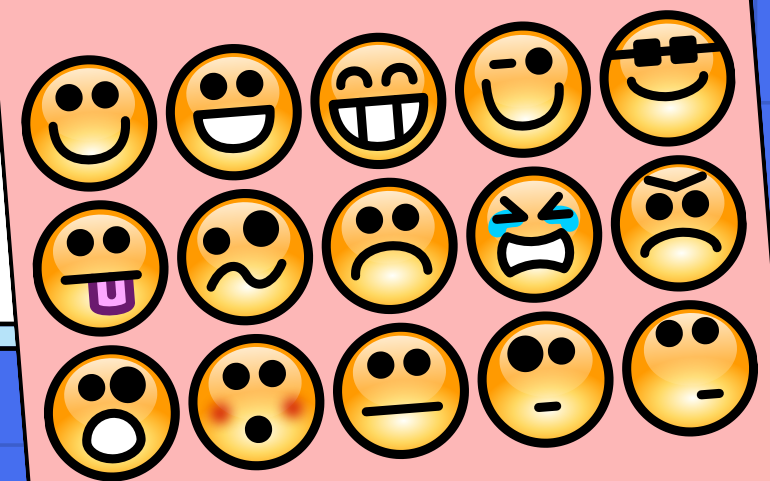
**Why are we doing a
building assessment?
Gather ideas for a
possible remodel**

○ ○ ○ ○

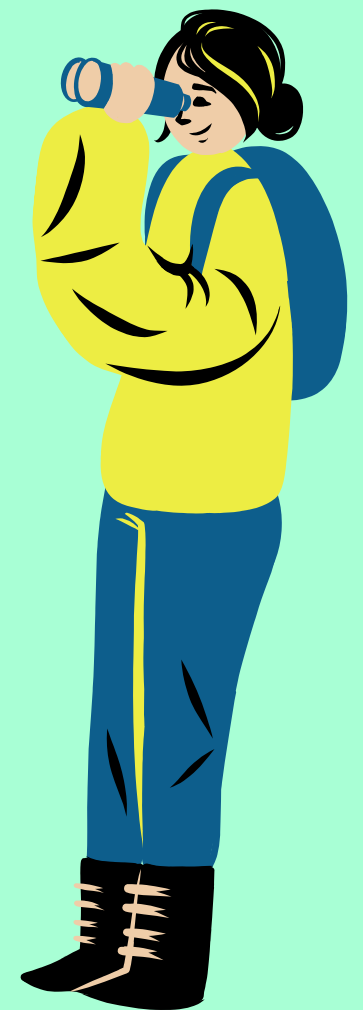


Emphasis on feelings and visual information

○ ○ ○ ○



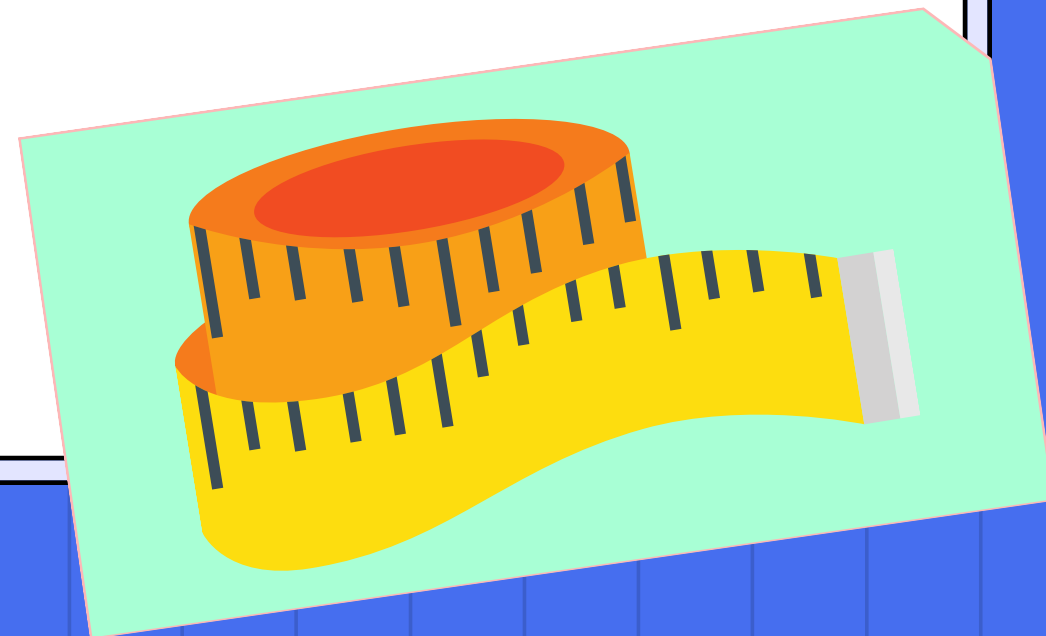
**Aligned with new UL
mission, vision, and
values statements**



Change in orientation



From **evaluation...**



...to imagination



**Hannah Conner of UNC's
Social Research Lab is
consulting on this project**



Our plan

○ ○ ○ ○



- 1 Review existing info
- 2 Gather ideas from students
- 3 Gather ideas from employees
- 4 Summarize & report to Admin

**Student survey will
go out early Fall
Semester**





Please select the areas in the image that are most important to you regarding library spaces. (Hover mouse and click over spots you would like to select, or tap areas on mobile devices)



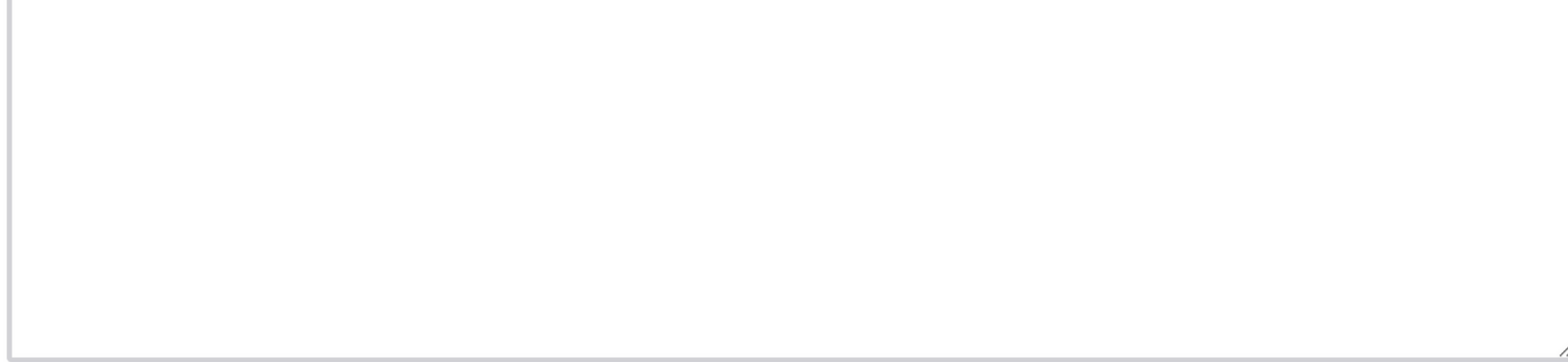
Sample
Survey
Question



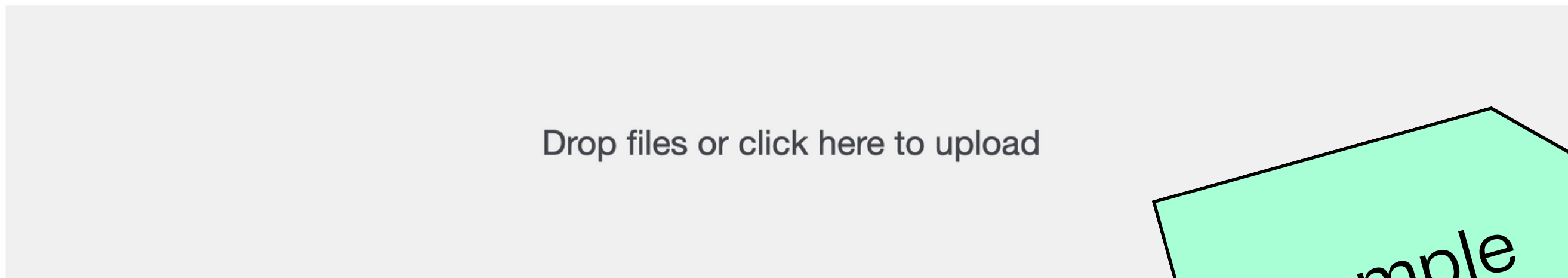
Which layout do you consider most accessible for library spaces? (Please rank order images by dragging images from top to bottom with the top being your 1st choice)



Sample
Survey
Question



Please share an image or artwork that you would like to see reflected at Michener Library?



Sample
Survey
Question



Survey followed up by interviews with students



What do UL employees think?

○ ○ ○ ○



- 1 Focus groups
- 2 Finding images of ideal library spaces
- 3 Drawing ideal library space
- 4 Other methods?

Questions Comments Concerns

o o o o

