

RESEARCH ARTICLE

Published  
2021-11-22

Cite as

Ainhoa Magrach, Francisco P. Molina and Ignasi Bartomeus (2021) *Niche complementarity among pollinators increases community-level plant reproductive success*, Peer Community Journal, 1: e1.

Correspondence

[ainhoa.magrach@bc3research.org](mailto:ainhoa.magrach@bc3research.org)

Peer-review

Peer reviewed and  
recommended by  
PCI Ecology,

<https://doi.org/10.24072/pci.ecology.100037>



This article is licensed  
under the Creative Commons  
Attribution 4.0 License.

## Niche complementarity among pollinators increases community-level plant reproductive success

Ainhoa Magrach<sup>1,2</sup>, Francisco P. Molina<sup>3</sup>, and Ignasi Bartomeus<sup>id,3</sup>

Volume 1 (2021), article e1

<https://doi.org/10.24072/pcjournal.1>

### Abstract

Our understanding of how the structure of species interactions shapes natural communities has increased, particularly regarding plant-pollinator interactions. However, research linking pollinator diversity to reproductive success has focused on pairwise plant-pollinator interactions, largely overlooking community-level dynamics. Here, we present one of the first empirical studies linking pollinator visitation to plant reproduction from a community-wide perspective. We use a well-replicated dataset encompassing 16 plant-pollinator networks and data on reproductive success for 19 plant species from Mediterranean shrub ecosystems. We find that statistical models including simple visitation metrics are sufficient to explain the variability observed. However, a mechanistic understanding of how pollinator diversity affects reproductive success requires additional information on network structure. Specifically, we find positive effects of increasing complementarity in the plant species visited by different pollinators on plant reproductive success. Hence, maintaining communities with a diversity of species but also of functions is paramount to preserving plant diversity.

<sup>1</sup>Basque Centre for Climate Change-BC3, Edif. Sede 1, 1o, Parque Científico UPV-EHU, Barrio Sarriena s/n, 48940, Leioa, Spain, <sup>2</sup>IKERBASQUE, Basque Foundation for Science, María Díaz de Haro 3, 48013, Bilbao, Spain, <sup>3</sup>Estación Biológica de Doñana (EBD-CSIC), Avda. Américo Vesputio 26, Isla de la Cartuja, 41092, Sevilla, Spain

## Introduction

Pollinators provide key services to plants by facilitating pollen flow (Garibaldi *et al.* 2013). Declining trends for some pollinator species in some regions (Potts *et al.* 2010; Bartomeus *et al.* 2018) have led researchers to focus on the functional impacts of these changes in pollinator diversity, especially for plant reproductive success (Biesmeijer *et al.* 2006).

Many studies have evaluated reproductive success on individual plant species (Albrecht *et al.* 2012; Thomson 2018), and used relatively simple visitation metrics (e.g., the number of pollinator species visiting a plant or the number of visits they perform) to explain the differences observed (e.g., Bommarco *et al.* 2012). Contrastingly, community-level analyses remain scarce (Bennett *et al.* 2018). Yet plants and pollinators do not interact in isolation but are embedded within larger networks of interactions encompassing other plant and pollinator species (Memmott *et al.* 2004). We are thus missing an important part of the picture, including direct interactions between the whole ensemble of plants and pollinators, but also indirect ones between species within one guild (e.g., plants) through their shared resources (Pauw 2013; Lázaro *et al.* 2014; Carvalheiro *et al.* 2014; Mayfield, Stouffer 2017; Johnson, Bronstein 2019). Understanding how changes in pollinator diversity and community structure affect ecosystem functioning is thus a major challenge that requires attention.

The few studies that have analyzed the effects of pollinator diversity on reproductive success at the community level have mainly used experimental setups. As an example, a study that experimentally recreated a plant community with 9 plant species and differing levels of pollinator diversity, found a positive effect of pollinator species diversity on seed set, but also an important effect of niche complementarity between pollinators, a measure of community structure (Fründ *et al.* 2013). These findings show that not only the diversity of species present, but also the diversity of roles they play and thus the way in which a community is structured are determinant factors of ecosystem functions.

Indeed, theoretical research has long suggested that the structure of multitrophic communities has an effect for ecosystem functioning (reviewed in (Thompson *et al.* 2012)). This line of research, rooted in niche theory and revamped by food-web studies (MacArthur, Levins 1967; May, Arthur 1972; Tilman 1982; Godoy *et al.* 2018), has greatly advanced theory, but the relationship between structure and function has seldom been tested using empirical data (but see (Poisot *et al.* 2013; Kaiser-Bunbury *et al.* 2017; Lázaro *et al.* 2020)). Specifically, a major knowledge gap resides in understanding which aspects of structure determine which aspects of function (Thompson *et al.* 2012). This is because although a network perspective has promised to encapsulate complex ecological mechanisms occurring at the community level – such as indirect interactions (Holt 1977; Abrams *et al.* 1998) or niche overlap (Woodward, Hildrew 2002)- less attention has been given to the ways in which these mechanisms relate to observed ecosystem processes (Blüthgen 2010). We are now at a point where we understand some of the emergent patterns characterizing mutualistic interaction networks at the community level, especially in the case of pollination (Bascompte, Jordano 2007). Amongst them is the prevalence of nested structures, i.e., arrangements where specialist species interact with a subset of the species that generalists interact with (Bascompte *et al.* 2003). Further, plant-pollinator interaction networks seem to exhibit a relatively high extent of complementary specialization at the community scale, which may be directly related to key ecosystem functions (Blüthgen, Klein 2011). However, the mechanisms by which these attributes affect plant reproduction remain to be understood (Winfrey 2013). The time is thus ripe to explore the relationship between community structure and ecosystem functioning empirically, with special emphasis on the underlying ecological mechanisms that drive these relationships.

Here, we present an empirical study linking pollinator visitation and plant reproductive success at the community level. We use a well-replicated dataset encompassing plant-pollinator interaction networks collected at 16 sites coupled with data on the reproductive success of 19 plant species recorded in Mediterranean shrub ecosystems. Our study focuses on understanding whether adding information on selected interaction network structure indices to previously used simple visitation metrics (e.g., the number and diversity of pollinator species visiting a plant species) aids in better explaining the differences observed in community-wide reproductive success. In doing so, we conducted our analyses focusing on reproductive success at two different levels: (i) at the species level by considering the association between the position of a focal species within the larger network and its link to individual reproductive success, and

(ii) at the site level, by evaluating how attributes that describe the whole site might affect average values of reproductive success for all species measured within one particular site. Specifically, our study focuses on how the interplay between the complementarity in plant species visited by different pollinators, and the redundancy in this function relate to reproductive success. Plant reproductive success requires of the delivery of conspecific pollen and thus of a certain degree of niche complementarity (Blüthgen, Klein 2011). Yet, greater values of redundancy in species functions (e.g., that provided by nested structures), are thought to promote species diversity (Bastolla *et al.* 2009) and stability (Thébault, Fontaine 2010) within plant-pollinator networks. At present, we do not know how either of these network characteristics affects the functions performed by pollinators.

Our results suggest that models including information on simple visitation metrics alone are able to explain differences in reproductive success. However, a mechanistic understanding requires additional information on network structure, notably information on the complementarity between the niches occupied by different pollinator species. Specifically, we find a positive effect of increasing niche complementarity between pollinators on plant reproductive success.

## Material and Method

### Plant pollinator interactions

Our study was conducted in SW Spain within the area of influence of Doñana National Park (Fig. S1). Sites were located within similar elevations (ranging from 50 to 150 m a.s.l.), and similar habitat and soil types, reducing potential confounding factors. Similarity in plant composition between sites was 0.41 (plant mean Sørensen beta-diversity). We surveyed 16 Mediterranean woodland patches with an average distance of 7 km between them (min= 3 km, max= 46.5 km). Each site was surveyed every two weeks for a total of 7 times during the flowering season of 2015 (from February to May) following a 100-m x 2 m transect for 30 mins. Along each transect, we identified all plant species and recorded all the floral visitors that landed on their flowers. Only floral visitors (from now on referred to as pollinators) that could not be identified in the field were captured, stored and identified in the laboratory by FPM and another expert entomologist (see acknowledgements). All surveys were done under similar weather conditions, avoiding windy or rainy days, during mornings and afternoons with the sampling order being established randomly. Within each transect every 10 m we surveyed a 2x2 m quadrant where the number of flowers per species were counted, i.e., 10 quadrats per transect which makes 40m<sup>2</sup> of area surveyed overall.

### Plant reproductive success

Within each site, we marked 3-12 individuals (mean  $\pm$  SD: 6.49  $\pm$  2.37) belonging to 1-6 plant species (mean  $\pm$  SD: 4.06  $\pm$  1.69, Table S2). For each individual, at the end of the season, we recorded fruit set (i.e. the proportion of flowers that set fruit), the average number of seeds per fruit and the average fruit and seed weight per fruit (1-36 fruits subsampled, mean  $\pm$  SD: 11.17  $\pm$  6.85, Table S3). These last two variables show a strong correlation (Pearson correlation= 0.89), and thus we only present results on fruit weight. Our survey included a total of 19 different totally or partially self-incompatible plant species that depend on pollinators to maximize their reproduction (Table S4) across our 16 sites. All plant species were common and widespread shrubs. Individuals were selected depending on the presence of flowers during the sampling events. We also calculated the average reproductive success at the site level by averaging values of reproductive success obtained for each species.

### Data analyses

To evaluate the sampling completeness, we estimated the asymptotic number of species of plants, pollinators and interactions present (Chao *et al.* 2009), a non-parametric estimator of species richness for abundance data. This estimator includes non-detected species and allowed us to calculate the proportion detected with our original data. We used Chao 1 asymptotic species richness estimators (Chao *et al.* 2009) and estimated the richness of pollinators, plants and plant-pollinator links accumulated as sampling effort increased up to 100% sampling coverage using package iNEXT (Hsieh *et al.* 2016) within the R environment (R Development Core Team 2011). We then extracted the values covered by our sampling.

To evaluate differences in network structure between communities, we constructed plant-pollinator interaction networks by pooling the data for the 7 rounds of sampling. We thus obtained one interaction

network per site, representing the number of individuals of different pollinator species recorded visiting each different plant species. For each network, we extracted a series of relevant network metrics at the species and site levels.

Additionally, we checked for spatial autocorrelation in our data using Mantel correlograms. Autocorrelation values were non-significant for all variables, except for pollinator richness where we have a small but significant effect at small spatial scales (Fig. S2). Hence, we treat each site as independent in our analysis.

### Species-level network analysis

At the species level, we focused on attributes defining the position of a focal plant species within the larger community. As such, we considered two metrics providing complementary non-redundant information: (i) average niche overlap in terms of pollinators between a focal plant species and each of the other plant species in the community, and (ii) the contribution to nestedness of each individual plant species. Niche overlap estimates the potential indirect interactions between plant species through shared resources (in this case pollinators) and the potential for increased heterospecific pollen deposition (Arceo-Gómez *et al.* 2019). We calculated it as the average overlap in pollinator species visiting a focal plant and each of the other plants in the community using the Morisita overlap index, a measure of similarity between two sets of data (Zhang 2016). A plant species' contribution to nestedness is calculated by comparing the nestedness observed in a given community to that generated by randomizing the interactions in which a focal species is involved. Species that show important contributions to overall nestedness will have values  $>0$ , while species that do not contribute to overall nestedness will show values  $<0$  (Saavedra *et al.* 2011).

### Site-level network analysis

At the site level, we followed the same logic as the one presented at the species level. We also calculated two network metrics providing complementary non-redundant information. In this case, we focused on nestedness, a measure of the redundancy in the plants visited by different pollinators, and pollinator niche complementarity, a measure of the complementarity in plant species visited by different pollinator species.

Nestedness is the property by which specialists interact with a subset of the species that generalists interact with (Bascompte *et al.* 2003). Although there is an ongoing debate in the literature (e.g., (James *et al.* 2012)), some theoretical studies have found that nested networks are more stable and resilient to perturbations because nestedness promotes a greater diversity by minimizing competition among species in a community (Bastolla *et al.* 2009). However, many network attributes vary with network size and complexity (Blüthgen *et al.* 2006). In the case of nestedness, we know it can be affected by network size and connectance (Song *et al.* 2017). An approach that is often used to correct for this are null models, comparing null-model corrected nestedness values across different networks. However, this approach presents the same issues, as z-scores also change with network size and connectance (Song *et al.* 2017). We thus used a normalized value of the widely used nestedness metric NODF based on binary matrices (Almeida-Neto, Ulrich 2011),  $NODF_c$  (Song *et al.* 2017). This normalized value is calculated as  $NODF_c = NODF_n / (C * \log(S))$ , where C is connectance and S is network size, calculated as  $S = \sqrt{(ncol(web) * nrow(web))}$ .  $NODF_n$  is calculated as  $NODF / \max(NODF)$ , which is independent of network size and thus comparable across different networks (Song *et al.* 2017). To calculate  $\max(NODF)$  we used a corrected version of the algorithm (Simmons *et al.* 2019) whenever possible. Results did not change qualitatively when using the uncorrected version of the algorithm for all sites as both are highly correlated (Spearman correlation = 0.94).

To calculate niche complementarity, we used a community-level measure defined as the total branch length of a dendrogram based on qualitative differences in visitor assemblages between plants (Devoto *et al.* 2012; **patchy200?**). All network metrics were calculated using package bipartite (Dormann *et al.* 2009).

### Statistical analyses

To evaluate whether adding information on network structure improves our ability to explain differences in reproductive success - both at the species and the site level - we used generalized linear (GLMs) and generalized linear mixed models (GLMMs) respectively. In both cases we fit three types of

models: (i) model 0, a null model with no explanatory variables, (ii) model 1, that only included simple visitation metrics and (iii) model 2 that additionally included information on network structure. These models are meant to be additive, so that the network metrics included are intended to complement rather than substitute the simple metrics traditionally used.

At the species level, response variables included fruit set analyzed using a binomial distribution and the average number of seeds per fruit, and the average fruit weight fitted using normal distributions. The number of seeds per fruit was centered and scaled (i.e., we subtracted column means and divided by standard deviation) to allow meaningful comparisons across species with contrasting life histories. As explanatory variables, model 1 included the number of pollinator species observed, and the visitation rate received by each plant species. Visitation rate was calculated as the total number of visits received by a plant species divided by the average number of flowers of that species found in the 10 2x2 m quadrats per transect. In turn, model 2 added the two network attributes calculated at the species level: average plant niche overlap and contribution to nestedness. For both models, we included plant species identity nested within site and site as random effects to account for multiple individuals of the same plant species measured at each site.

At the site level, response variables were the average reproductive success of all plants surveyed within a site (i.e., average fruit set analyzed using a binomial distribution, average number of seeds per fruit and average fruit weight using a normal distribution). We thus had a single value per site and no random effects are needed. Here, model 1 included total pollinator richness and total pollinator abundance (i.e. number of visits received by all plants within the community) as explanatory variables. Model 2, in turn, added information on network structure by including nestedness and pollinator niche complementarity.

Average values of reproductive success at the site level can be driven by a single plant species. Yet, what will determine the persistence of a diverse plant community, is the presence of some sort of “equity” or evenness in reproductive success across the whole community. We therefore calculated the proportion of species with normalized (between 0 and 1) average fruit set values that were above the 50<sup>th</sup> percentile as a measure of equity. As any selected threshold is arbitrary, we repeated this using the 25<sup>th</sup> and 75<sup>th</sup> percentile thresholds (Byrnes *et al.* 2014). We then used the same framework as that used for species and site-level analyses and fit the same models 0, 1 and 2 using equity in reproductive success as response variable and fitting a binomial distribution.

In all cases, we used variance inflation factors to check for collinearity between explanatory variables. Additionally, we ran residual diagnostics to check if model assumptions were met and used the Akaike Information Criterion (AIC) to compare model performance and complexity. Whenever the difference between the AIC of the models was  $< 2$  ( $\Delta AIC < 2$ ), we considered all models equally good (Burnham *et al.* 2010). In the case of mixed models, for comparison, models were fitted by maximum likelihood and then the best model was refitted using restricted maximum likelihood. All predictor variables were standardized prior to analysis. For every model we also calculate the R<sup>2</sup> value using the approximation suggested for GLMMs when necessary (Nakagawa *et al.* 2017).

Finally, we tested whether the importance of network structure in explaining differences in equity in reproductive success increases with the number of plant species being considered. We expect that when only one plant species is considered the importance of network structure will be negligible, while we expect it to increase as more plant species are considered (up to a maximum number of 6 species which is the maximum we have measured in our study at a particular site).

To test this, we ran a simple simulation in which the number of species considered increased at each step and for each step we re-calculated equity in reproductive success. Instead of drawing plant species randomly for each step, we tested all possible combinations for each plant number level and network, as the number of combinations is small (e.g. for  $n = 3$  plants selected out of 6 there are only 20 possible combinations). Then, we tested if the relationship between equity in reproductive success and niche complementarity (given its importance in determining differences in reproductive success, see Results section) changes as a function of the number of plants considered within our simulated communities. To this end, for each level of species number considered, we randomly selected one of the generated equity values across each of the 16 communities and regressed these 16 values against our network level predictor and extracted the model slope estimates. We repeated this process 1,000 times and averaged all slope estimates. We expect that the more plants considered, the larger the resulting average estimates will

be. Note that we only interpret the mean effects, as the variance among different plant number of species considered depends on the initial number of possible combinations.

## Results

Within our sampling we recorded 655 plant-pollinator interactions involving 277 pollinator species and 57 plant species (Table S1). Within the pollinator community the distribution of individuals in different orders was: 92.18% Hymenoptera, 5.69% Diptera, 1.29% Coleoptera and 0.63% Lepidoptera.

Our sampling completeness analyses revealed that our survey was able to capture 17-54% of pollinator species (average = 35%), 43-100% of plant species (average = 80%) and 9-32% of plant-pollinator links (average = 20%), in line with that obtained with other studies (e.g., Chacoff *et al.* 2011), Fig. S3). Our values of sampling completeness were slightly smaller in the case of pollinators, probably as a consequence of the great diversity found in the Mediterranean region and within our study area in particular, a hotspot of insect diversity (European Commission. Directorate General for the Environment., IUCN (International Union for Conservation of Nature). 2014).

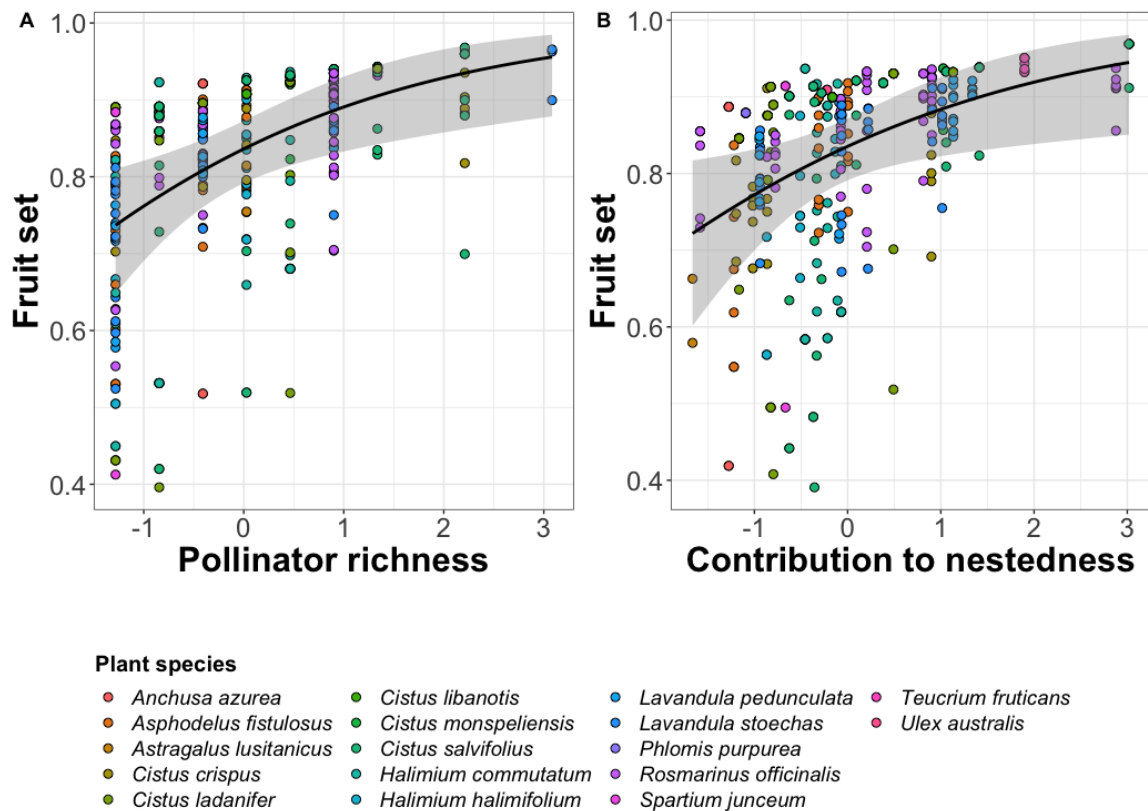
### Species-level analyses

At the species level, in the case of fruit set, our results showed that model 2 had the best fit to our data (lowest AIC value), and fixed effects explained 9% of the variability observed (conditional  $R^2=17\%$ ). We found a positive relationship between fruit set, pollinator species richness, and a network structure metric, the contribution to nestedness of a focal plant within the overall network (Table 1, Fig. 1, Fig. S4).

For the average number of seeds per fruit at the species level as well as for fruit weight, our results showed that none of the models fitted were better than the null model explaining differences across plant species.

**Table 1.** Results of GLMM showing the association between simple visitation and network structure metrics and species-level fruit. Bold letters indicate variables with large effects (see Figure S4 for estimate confidence intervals).

Fruit set	Estimate	Std.Error	z.value
(Intercept)	1.79	0.21	8.38
<b>Pollinator richness</b>	<b>0.51</b>	<b>0.25</b>	<b>2.04</b>
Relative number of visits	-0.16	0.25	-0.64
Plant niche overlap	0.20	0.23	0.85
<b>Contribution to nestedness</b>	<b>0.47</b>	<b>0.26</b>	<b>1.81</b>



**Figure 1.** Partial residual plots showing the effect of A) pollinator species richness and B) the contribution to nestedness of each plant species on fruit set. Dots represent each of the individuals sampled for each species within each site.

### Site-level analyses

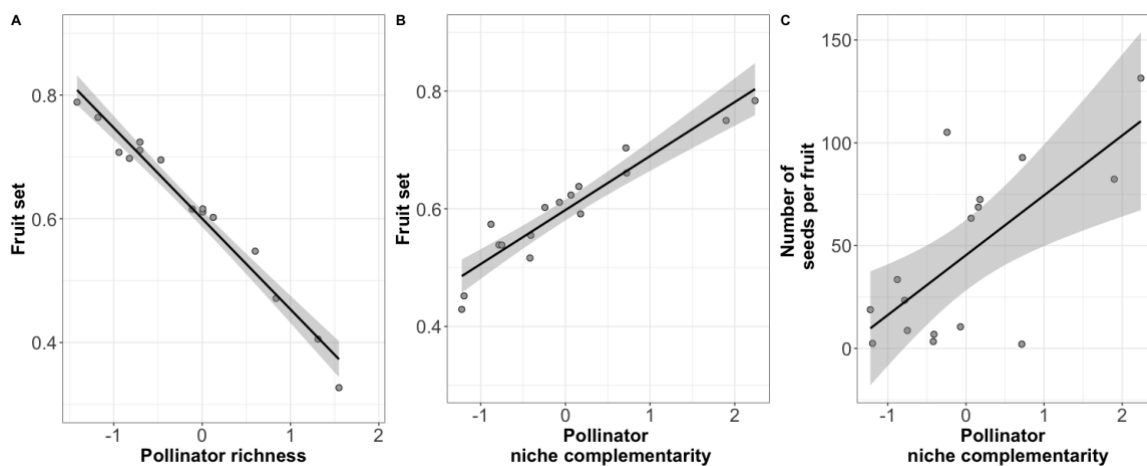
At the site level, in the case of fruit set and the number of seeds per fruit, we found that both model 1 and 2 were equally good when penalizing for model complexity (i.e.,  $\Delta AIC < 2$ ; (Burnham, Anderson 2004)). This suggests model 2 was a good model despite its added complexity, and actually shows a substantially better predictive ability than model 1 ( $R^2 = 0.46$  for model 2 versus  $0.27$  for model 1 in the case of fruit set and  $R^2 = 0.49$  for model 2 versus  $0.35$  for model 1 in the case of the number of seeds per fruit) and therefore we will comment results for this model only. Specifically, we found that both fruit set and the number of seeds per fruit were positively related to niche complementarity between pollinators (Tables 2, Fig. 2, Fig. S5). Additionally, we found a negative association between site-level pollinator richness and average fruit set (Table 2A, Fig. 2, Fig. S5).

In the case of fruit weight, we found that both the null model and model 1 were equally good (i.e.,  $\Delta AIC < 2$ ; (Burnham, Anderson 2004)). Model 1, i.e., that only including simple visitation metrics, showed an  $R^2$  of  $0.23$ . In this case, we found a positive link with site-level pollinator richness (Table S5A, Figs. S5-S6). This association was maintained even after removing a site that has a particularly large pollinator richness value (Table S5B, Fig. S7, Fig. S5).

**Table 2.** Results of GLM showing associations between simple visitation and network structure metrics and A) site-level average fruit set and B) site-level average number of seeds per fruit based on best model selected. Bold letters indicate variables with large effects.

A) Fruit set	Estimate	Std. Error	z value
(Intercept)	<b>1.20</b>	<b>0.15</b>	<b>7.79</b>
<b>Pollinator richness</b>	<b>-0.77</b>	<b>0.26</b>	<b>-2.91</b>
Relative number of visits	-0.12	0.19	-0.66
Nestedness	0.02	0.16	0.12
<b>Pollinator niche complementarity</b>	<b>0.40</b>	<b>0.26</b>	<b>1.58</b>

B) Seeds per fruit	Estimate	Std. Error	t value
(Intercept)	45.37	8.84	5.13
Pollinator richness	1.56	15.80	0.10
Relative number of visits	4.37	10.78	0.41
Nestedness	3.94	9.80	0.40
<b>Pollinator niche complementarity</b>	<b>26.44</b>	<b>15.49</b>	<b>1.71</b>



**Figure 2.** Partial residual plots showing the effect of the single predictor which best explains the variability in site-level reproductive success. A) Shows the effect of pollinator richness, and B) of niche complementarity among pollinator species on site-level average fruit set. C) Shows the effect of niche complementarity among pollinator species on the average number of seeds per fruit at the site level. Dots represent average values of fruit set at the level of the community for all plant species considered (N=16 sites).

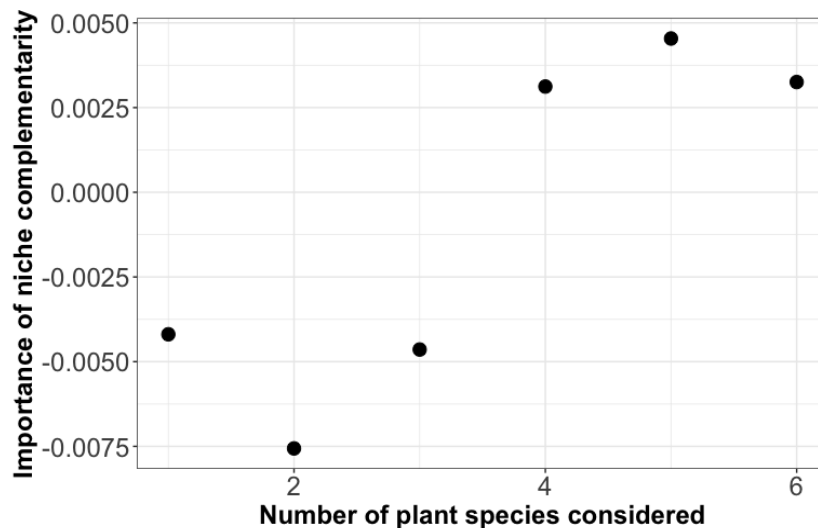
### Equity in fruitset

When evaluating the relationship between community composition and network structure on equity in reproductive success across the different species within a community, we found that using the 50<sup>th</sup> percentile all models were equally good (i.e.,  $\Delta AIC < 2$ ; (Burnham, Anderson 2004)), but none of the



variables considered showed any strong associations (Table S6). In the case of the other two thresholds considered (25<sup>th</sup> and 75<sup>th</sup> percentiles) model 0, the null model, was the best model.

Within our simulation evaluating the relationship between niche complementarity and equity in reproductive success at increasing number of plant species considered, we found that the link to complementarity became more important as more species were considered (Fig. 3). This importance seemed to reach a plateau at 6 species. However, this should be further evaluated, as this was the maximum number of species simultaneously observed in a community for our study, which precludes us from simulating further numbers of species.



**Figure 3.** Results of simulation evaluating the importance of niche complementarity in determining differences in equity in reproductive across communities harboring from one to six species. Points represent average values across 1,000 simulated combinations.

## Discussion

The existence of relationships between interaction network structure and ecosystem function have been long hypothesized, yet, the specific mechanisms underlying this relationship remain elusive (Thompson *et al.* 2012). Our results suggest that different aspects of network structure affect different dimensions of ecosystem functioning. Specifically, we find that the contribution to nestedness of a plant species within a community has a positive association with its fruit set. From a plant's perspective, this indicates that being connected to other plant species via shared pollinators has a positive outcome (e.g. by ensuring a stable pollinator supply through time) rather than a negative one (e.g. via heterospecific pollen transport). At the site level, we find that greater values of niche complementarity between pollinators result in larger average values of reproductive success.

Most of our analyses reveal that model 1 and 2 were equally good, which suggests that the added complexity of measuring the full network of interactions may not pay off for rapid assessments. Hence, simple visitation metrics, such as pollinator richness, might be enough to describe general patterns (Garibaldi *et al.* 2013; Garibaldi *et al.* 2014). Yet, adding network level information may inform us of the potential ecological mechanisms underlying the processes driving these observed patterns. Further, although we sampled each site seven times in a randomized order in an attempt to better represent interactions through time, our surveys were able to capture 20% of interactions given the great diversity of our study system. This could be explaining part of the low effect sizes we find at the species level, where a stronger contribution of pollinator visits is expected given their obligate dependence. In addition, plant reproductive success is affected by other variables which we do not attempt to measure in this study and that could explain a large portion of the variability observed.

Consistent with previous experimental (Fontaine *et al.* 2005; Fründ *et al.* 2013), theoretical (Pauw 2013), and empirical studies (Poisot *et al.* 2013; Valdovinos *et al.* 2016), we find that niche complementarity

is key in determining differences in reproductive outputs at the community level, both greater fruit set and larger numbers of seeds per fruit. These results show that reproductive success in plants requires of a certain degree of specialization amongst pollinator species on a particular plant resource in order to avoid the negative effects of inter-specific pollen deposition (e.g., pollen loss (Flanagan *et al.* 2009) or interference with conspecific pollen (Morales, Traveset 2008)). However, we also find that some level of redundancy in these functions is needed as revealed by the positive effect of plant niche overlap on the number of seeds per fruit at the species level.

We did not find a relationship between nestedness and any of the reproductive success measures. This metric, widely used across network analysis, does not seem to play a direct role on plant reproductive success. However, our study is limited to a maximum of six common plant species per community, and including more species, especially rare species, might reveal different patterns. Further, although we sampled each site seven times in a randomized order in an attempt to better represent interactions through time, our surveys were able to capture ~20% of interactions given the great diversity of our study system. This could be explaining part of the low effect sizes we find at the species level, where a stronger contribution of pollinator visits is expected given their obligate dependence (Garibaldi *et al.* 2013). In addition, it is important to note that plant reproductive success is affected by other environmental variables which we do not attempt to measure in this study and that could explain a large portion of the variability observed.

Our measure of reproductive success at the site level using average values represents an important part of the functions delivered by pollinators to plants. However, average values might mask a great deal of variability amongst plant species, and thus a nuanced view of the effect of pollinators on whole-plant ensembles is needed. This can be captured by the effect of pollinators on equity in reproductive success across plant species. This aspect ensures that reproductive success is equally distributed amongst a larger number of species, thus contributing to the maintenance of greater species diversities in natural populations. Indeed, we know that plant species diversity within a community is largely driven by different types of direct and indirect interactions including those amongst plant species (e.g., resource competition (Goldberg, Barton 1992) or facilitation (Bruno *et al.* 2003)), as well as those defining antagonistic (e.g., involving pathogens (Bagchi *et al.* 2010), or mutualistic interactions (e.g. pollinators (Benadi *et al.* 2013; Lanuza *et al.* 2018)). However, equitability in reproductive success across species is seldom taken into account, despite increasing theoretical and empirical support to the idea that minimizing fitness differences among species is an important mechanism of species coexistence (Godoy *et al.* 2014).

In our case, we did not find a strong effect of either simple visitation or network structure metrics on reproductive equity. However, the results of our simulation, shows us that the effect of network structure increases when more than four plant species are considered. This implies that if we were able to measure reproductive success for all the plant species in all the communities (which is not feasible given constraints on sampling effort), we might find that the effects of network structure on equity might be more prevalent.

One of the unexpected results of our analyses is the strong negative relationship between total pollinator richness and fruit set at the site level. One possible explanation for this is that greater richness means greater transfer of heterospecific pollen (Arceo-Gómez *et al.* 2019). Another possible explanation to this might be the fact that pollinator richness includes all the pollinators recorded during our sampling efforts, i.e., it includes species that do not pollinate some of the species whose reproductive success was measured. More complex communities with more pollinators, but also with more plant species (Pearson correlation between plant and pollinator richness = 0.42 in our case) may require stabilizing mechanisms that reduce the competition exerted by the dominant plant species. A way to reduce the competition exerted by these dominant species, which are precisely those evaluated in this study, is by reducing their reproductive success (Lanuza *et al.* 2018; Stavert *et al.* 2019). These ideas open the door to exploring the positive or negative effects of the complete pollinator community on full plant species coexistence, which may be determined by density-dependence effects (Benadi, Pauw 2018). In our case, while fruit set at the site level is negatively related to pollinator richness, it is important to note that fruit set at the species level and fruit weight show the opposite relationship, indicating that this density-dependent effect might only be limiting fruit quantity and not fruit quality. Thus, taking into account the densities of co-flowering plant species may be the next step (Vanbergen *et al.* 2013).

Our study illustrates the challenges of measuring and linking network structure to ecosystem function empirically. There is an ongoing debate as to which network metrics better reflect classic ecological

mechanisms, such as niche partitioning or competition (Delmas *et al.* 2018). Here, we focus on testing two specific hypotheses, but other structural properties can be explored in the future. Furthermore, the structure of plant-pollinators networks is dynamic due to ecological and evolutionary reasons, but so far, we are only able to characterize it for single snap-shots. Moreover, different aspects of functioning may be important, such as the need to consider the functioning of both trophic levels (Godoy *et al.* 2018). In terms of plant reproductive success and the functions performed by pollinators we can measure different aspects, ranging from pollen deposition (the direct pollinator function), to its final effects on plant fitness. Here, we focus on an intermediate stage including fruit quantity and quality, which is of clear ecological importance.

In summary, our findings show that the analysis of natural communities using network analysis represents an ideal way of visualizing the complexity present within these communities, but also represents a manner of mechanistically representing the differences observed across the reproductive success of individuals and/or species while linking them to potential ecological mechanisms. Our findings represent a step forward in our understanding of how community structure affects function, yet they also show that more studies with better resolved communities are needed, with a special focus being placed in evaluating reproductive success of a larger array of plant species.

### Acknowledgements

The authors would like to thank Oscar Aguado for identifying pollinator species. We would also like to acknowledge the efforts of the editor Cédric Gaucherel, as well as those of Michael Lattorff, Nicolas Deguines, Alberto Pascual, Nico Blüthgen and six anonymous reviewers who provided very helpful comments and suggestions in a previous version of this manuscript.

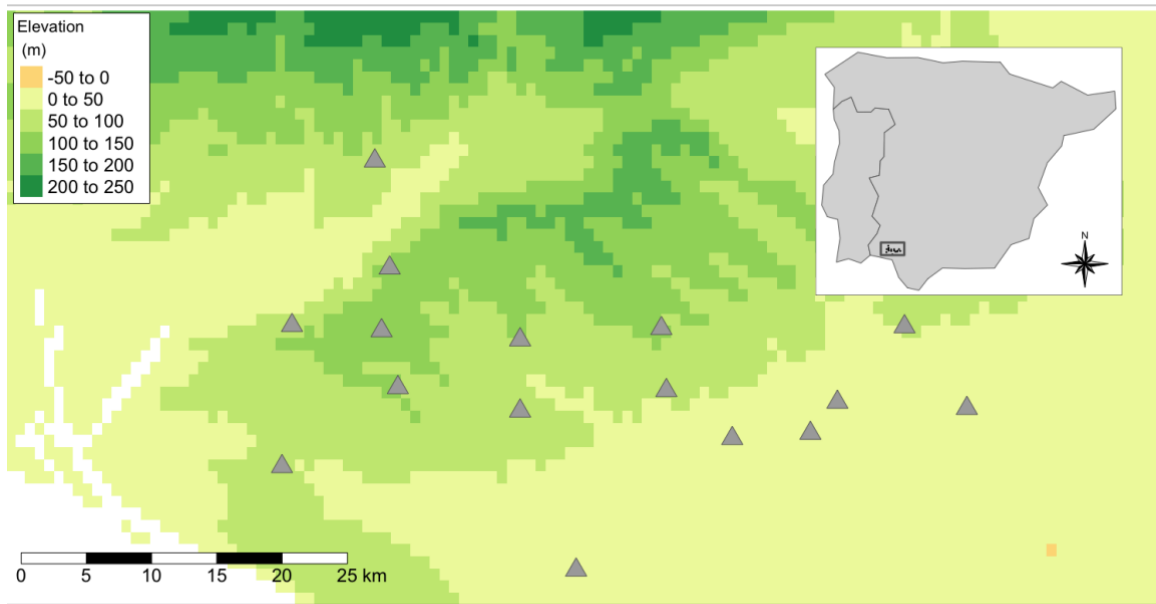
### Funding

AM received funding from a Juan de la Cierva (IJCI-2014-22558) and Ikerbasque fellowships. IB acknowledges funding from MSC-PCIG14-GA-2013-631653 BeeFun Project. We thank Doñana's Singular Scientific-Technical Infrastructure (ICTS-RBD) for access to the park. Research also supported by the Spanish State Research Agency through María de Maeztu Excellence Unit accreditation (MDM-2017-0714) and the Basque Government BERC Programme. AM received funding from an Ikerbasque Research Fellowship.

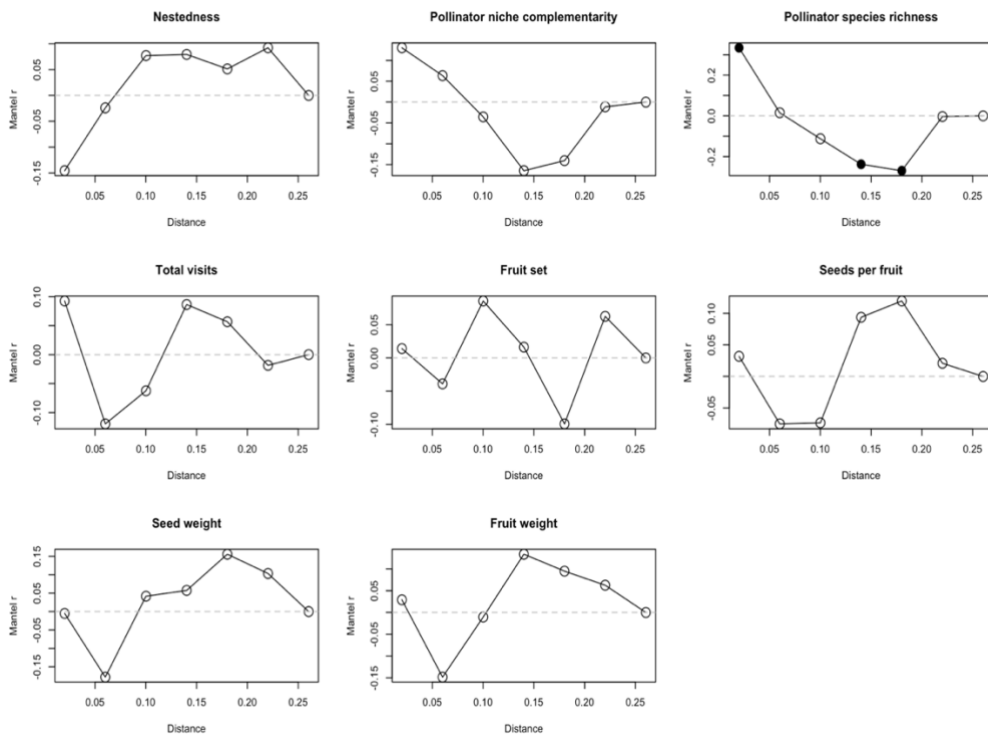
### Data, script and code availability

All the data used is available <https://zenodo.org/account/settings/github/repository/ibartomeus/BeeFunData> and the code used to generate all results can be found at <https://doi.org/10.5281/zenodo.3364037>.

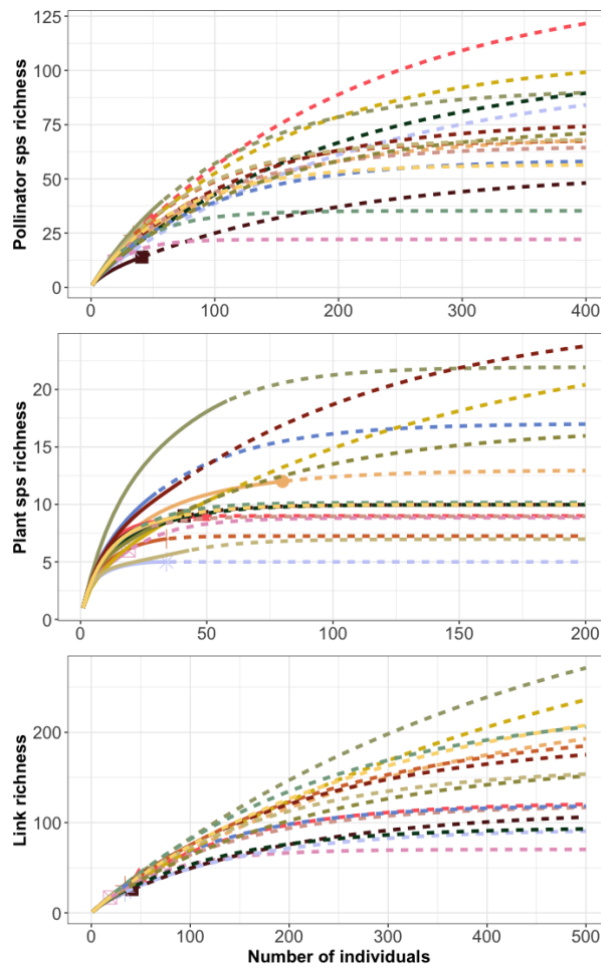
Supplementary information (uses the "PCJ Section" style)



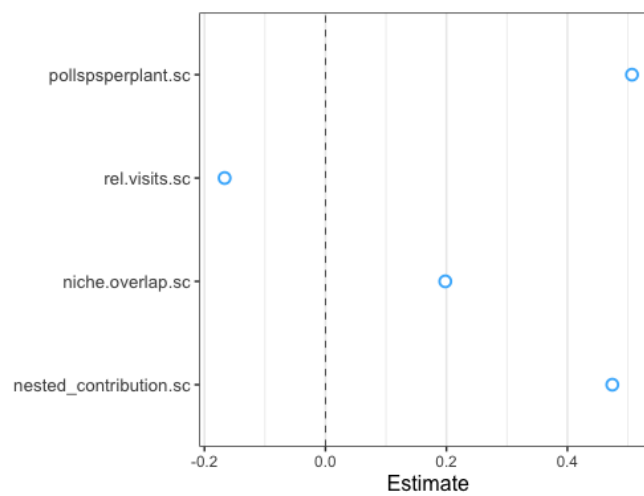
**Figure S1.** Map showing location of 16 Mediterranean woodland patches where plant-pollinator interactions were surveyed from February to May 2015. Inset shows location of study area within SW Spain.



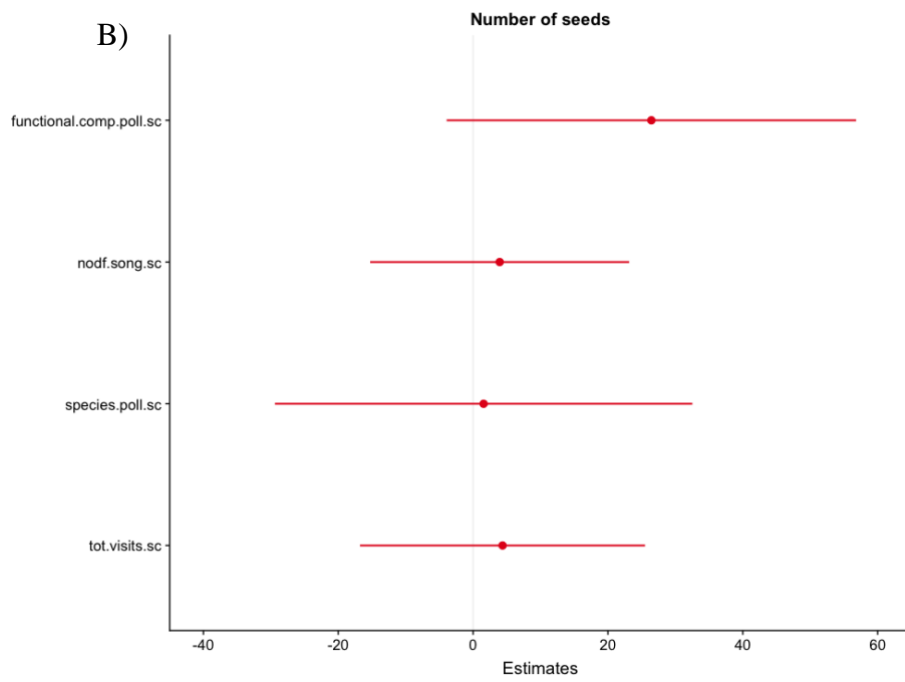
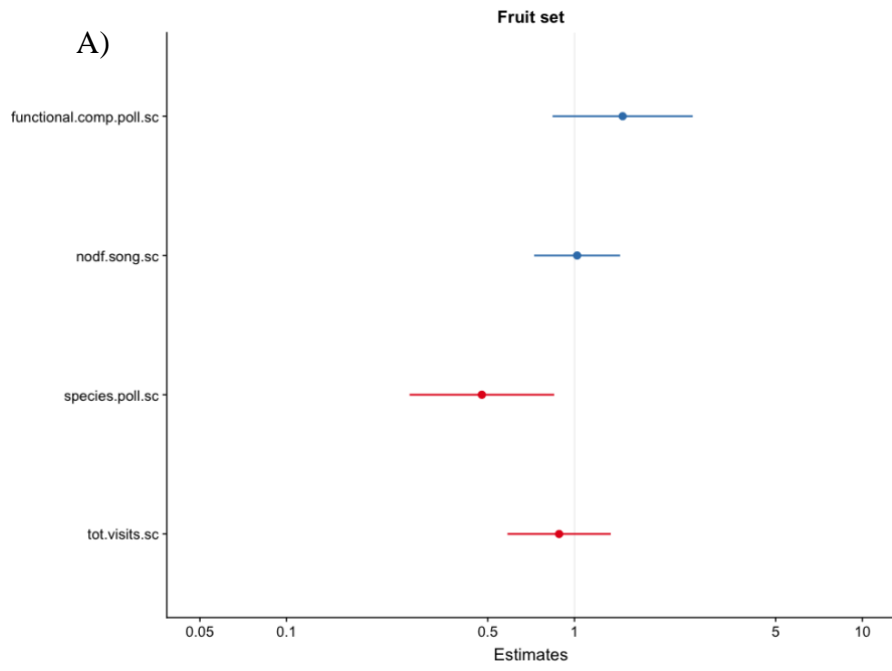
**Figure S2.** Mantel correlograms showing a low spatial autocorrelation for the different variables included in the analyses.

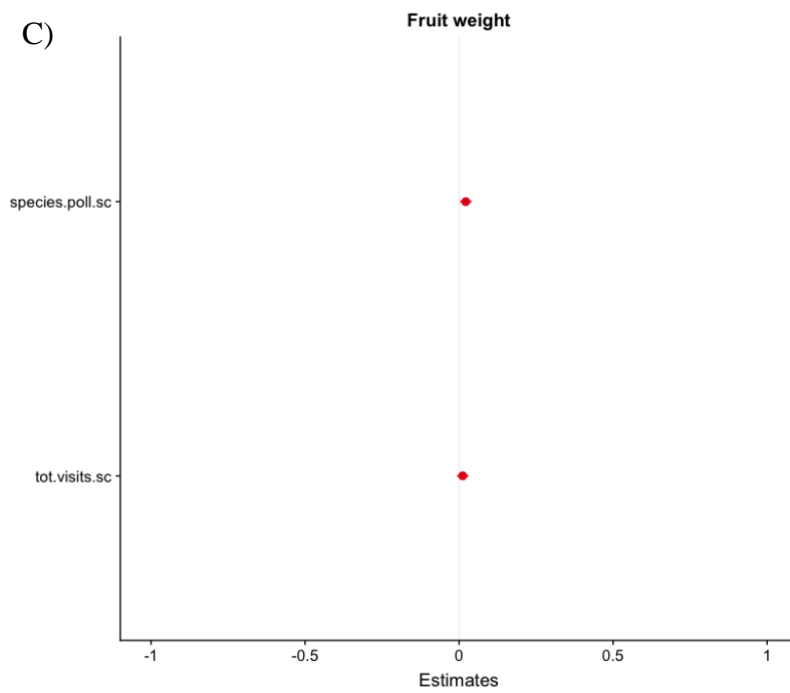


**Figure S3.** Accumulation curves of pollinator, plant and plant-pollinator link richness with increasing sampling effort up to 100% sample coverage. Solid lines and points indicate observed richness while dashed lines show expected richness at increasing sample size, (i.e., extrapolated).

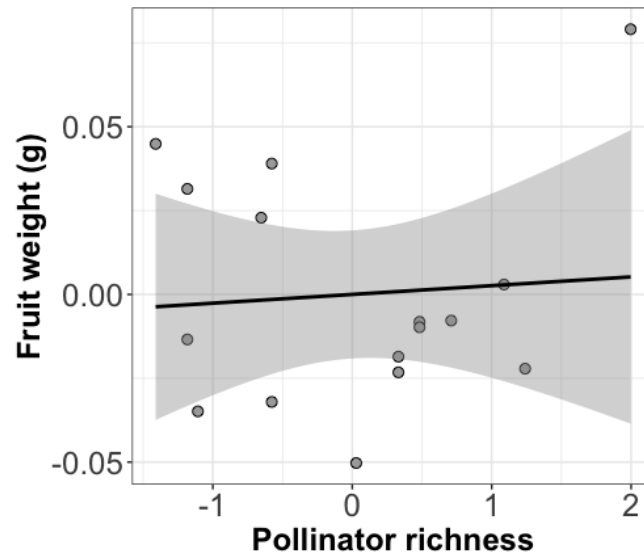


**Figure S4.** Forest plots showing 95% confidence intervals for all coefficients included in species-level models.

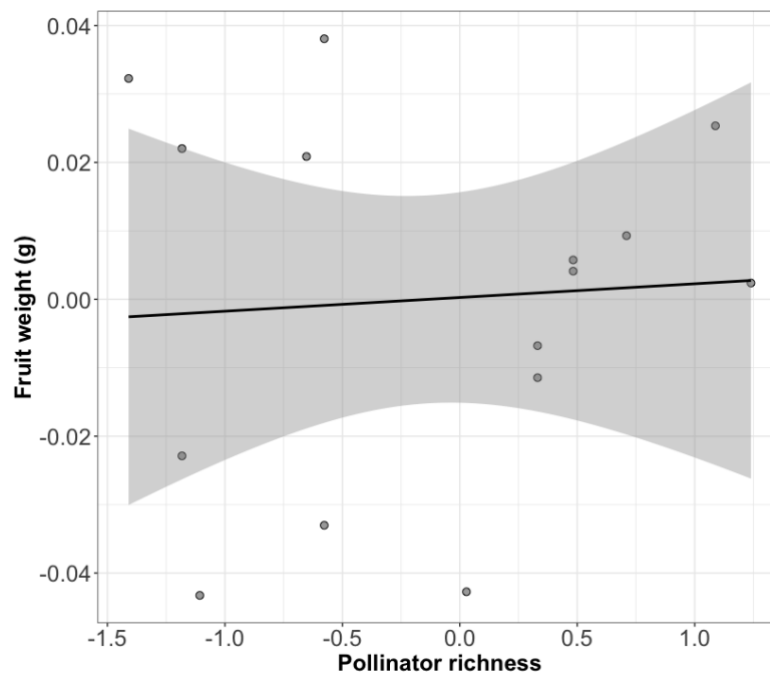




**Figure S5.** Forest plots showing 95% confidence intervals for all coefficients included in site-level models, A) fruit set, B) number of seeds per fruit and C) fruit and seed weight.



**Figure S6.** Partial residual plots showing the effect of pollinator richness on site-level average fruit weight. Dots represent values for each site (N=16 sites).



**Figure S7.** Partial residual plots showing the effect of pollinator richness on site-level average fruit weight. Here, a site with a particularly large pollinator richness value is removed to test whether it might be driving the significant relationship. Dots represent values for each site (N=15 sites).



**Table S1A.** List of all plant species present at each of the sites and included in network analyses.

Site	Plant species
Aznalcazar	<i>Asphodelus fistulosus</i>
Aznalcazar	<i>Cistus crispus</i>
Aznalcazar	<i>Cistus ladanifer</i>
Aznalcazar	<i>Cistus monspeliensis</i>
Aznalcazar	<i>Cistus salvifolius</i>
Aznalcazar	<i>Echium plantagineum</i>
Aznalcazar	<i>Lavandula pedunculata</i>
Aznalcazar	<i>Lavandula stoechas</i>
Aznalcazar	<i>Lavatera cretica</i>
Aznalcazar	<i>Rosmarinus officinalis</i>
Aznalcazar	<i>Teucrium fruticans</i>
Bonares	<i>Andryala integrifolia</i>
Bonares	<i>Cistus crispus</i>
Bonares	<i>Cistus ladanifer</i>
Bonares	<i>Cistus salvifolius</i>
Bonares	<i>Halimium commutatum</i>
Bonares	<i>Lavandula pedunculata</i>
Bonares	<i>Lavandula stoechas</i>
Bonares	<i>Thapsia villosa</i>
Bonares	<i>Thymus mastichina</i>
ConventodelaLuz	<i>Cistus crispus</i>
ConventodelaLuz	<i>Cistus ladanifer</i>
ConventodelaLuz	<i>Cistus salvifolius</i>
ConventodelaLuz	<i>Halimium halimifolium</i>
ConventodelaLuz	<i>Lavandula stoechas</i>
ConventodelaLuz	<i>Retama</i> sp.
ConventodelaLuz	<i>Rosmarinus officinalis</i>
ConventodelaLuz	<i>Spartium junceum</i>
ConventodelaLuz	<i>Teucrium fruticans</i>
CotitodeSantaTeresa	<i>Astragalus lusitanicus</i>
CotitodeSantaTeresa	<i>Cistus crispus</i>
CotitodeSantaTeresa	<i>Cistus salvifolius</i>
CotitodeSantaTeresa	<i>Lavandula pedunculata</i>
CotitodeSantaTeresa	<i>Lavandula stoechas</i>
CotitodeSantaTeresa	<i>Rosmarinus officinalis</i>
CotitodeSantaTeresa	<i>Thapsia villosa</i>
Elpinar	<i>Cistus albidus</i>
Elpinar	<i>Cistus salvifolius</i>
Elpinar	<i>Convolvulus arvensis</i>
Elpinar	<i>Halimium commutatum</i>
Elpinar	<i>Lavandula stoechas</i>
Elpinar	<i>Rosmarinus officinalis</i>
Elpozo	<i>Cistus ladanifer</i>
Elpozo	<i>Cistus salvifolius</i>
Elpozo	<i>Erica scoparia</i>
Elpozo	<i>Erica umbellata</i>
Elpozo	<i>Rosmarinus officinalis</i>
Esparragal	<i>Armeria velutina</i>
Esparragal	<i>Chamaemelum fuscatum</i>
Esparragal	<i>Cistus libanotis</i>
Esparragal	<i>Cistus salvifolius</i>

Site	Plant species
Esparragal	<i>Halimium commutatum</i>
Esparragal	<i>Lavandula pedunculata</i>
Esparragal	<i>Lavandula stoechas</i>
Esparragal	<i>Scabiosa atropurpurea</i>
LaCunya	<i>Andryala integrifolia</i>
LaCunya	<i>Cerithe gymnandra</i>
LaCunya	<i>Cistus salvifolius</i>
LaCunya	<i>Echium plantagineum</i>
LaCunya	<i>Erica ciliaris</i>
LaCunya	<i>Halimium commutatum</i>
LaCunya	<i>Lavandula pedunculata</i>
LaCunya	<i>Leontodon longirostris</i>
LaCunya	<i>Rosmarinus officinalis</i>
LaCunya	<i>Tuberaria guttata</i>
LaCunya	<i>Ulex australis</i>
LaRocina	<i>Anchusa azurea</i>
LaRocina	<i>Andryala integrifolia</i>
LaRocina	<i>Cistus salvifolius</i>
LaRocina	<i>Diplotaxis virgata</i>
LaRocina	<i>Halimium commutatum</i>
LaRocina	<i>Halimium halimifolium</i>
LaRocina	<i>Lavandula pedunculata</i>
LaRocina	<i>Lavandula stoechas</i>
LaRocina	<i>Linaria viscosa</i>
LaRocina	<i>Rosmarinus officinalis</i>
LaRocina	<i>Spartium junceum</i>
Lasmulas	<i>Cistus crispus</i>
Lasmulas	<i>Cistus ladanifer</i>
Lasmulas	<i>Cistus monspeliensis</i>
Lasmulas	<i>Cistus salvifolius</i>
Lasmulas	<i>Echium plantagineum</i>
Lasmulas	<i>Lavandula stoechas</i>
Lasmulas	<i>Ranunculus</i> sp.
Lasmulas	<i>Rosmarinus officinalis</i>
Lasmulas	<i>Thapsia villosa</i>
Niebla	<i>Andryala integrifolia</i>
Niebla	<i>Arctotheca calendula</i>
Niebla	<i>Asphodelus fistulosus</i>
Niebla	<i>Astragalus lusitanicus</i>
Niebla	<i>Calendula arvensis</i>
Niebla	<i>Carduus</i> sp.
Niebla	<i>Cistus crispus</i>
Niebla	<i>Cistus ladanifer</i>
Niebla	<i>Cistus monspeliensis</i>
Niebla	<i>Convolvulus arvensis</i>
Niebla	<i>Lavandula pedunculata</i>
Niebla	<i>Lavandula stoechas</i>
Niebla	<i>Leontodon</i> sp.
Niebla	<i>Linaria viscosa</i>
Niebla	<i>Linum bienne</i>
Niebla	<i>Lupinus angustifolius</i>
Niebla	<i>Phlomis purpurea</i>
Niebla	<i>Taraxacum vulgare</i>

Site	Plant species
Niebla	<i>Thapsia villosa</i>
PinaresdeHinojos	<i>Andryala integrifolia</i>
PinaresdeHinojos	<i>Cistus crispus</i>
PinaresdeHinojos	<i>Cistus libanotis</i>
PinaresdeHinojos	<i>Cistus salvifolius</i>
PinaresdeHinojos	<i>Diplotaxis virgata</i>
PinaresdeHinojos	<i>Rosmarinus officinalis</i>
PinaresdeHinojos	<i>Spartium junceum</i>
PinaresdeHinojos	<i>Ulex australis</i>
Pinodelcuervo	<i>Asphodelus fistulosus</i>
Pinodelcuervo	<i>Chamaemelum fuscatum</i>
Pinodelcuervo	<i>Cistus crispus</i>
Pinodelcuervo	<i>Cistus ladanifer</i>
Pinodelcuervo	<i>Cistus salvifolius</i>
Pinodelcuervo	<i>Halimium commutatum</i>
Pinodelcuervo	<i>Lavandula pedunculata</i>
Pinodelcuervo	<i>Lavandula stoechas</i>
Pinodelcuervo	<i>Ranunculus</i> sp.
Pinodelcuervo	<i>Rosmarinus officinalis</i>
Pinodelcuervo	<i>Thapsia villosa</i>
Pinodelcuervo	<i>Ulex australis</i>
Urbanizaciones	<i>Calendula arvensis</i>
Urbanizaciones	<i>Cistus crispus</i>
Urbanizaciones	<i>Cistus salvifolius</i>
Urbanizaciones	<i>Halimium commutatum</i>
Urbanizaciones	<i>Lavandula pedunculata</i>
Urbanizaciones	<i>Lavandula stoechas</i>
Urbanizaciones	<i>Rosmarinus officinalis</i>
Urbanizaciones	<i>Tuberaria guttata</i>
Urbanizaciones	<i>Ulex australis</i>
Villamanriqueeste	<i>Cistus crispus</i>
Villamanriqueeste	<i>Cistus ladanifer</i>
Villamanriqueeste	<i>Cistus salvifolius</i>
Villamanriqueeste	<i>Genista hirsuta</i>
Villamanriqueeste	<i>Rosmarinus officinalis</i>
Villamanriqueeste	<i>Spartium junceum</i>
Villamanriquesur	<i>Andryala integrifolia</i>
Villamanriquesur	<i>Armeria velutina</i>
Villamanriquesur	<i>Cistus crispus</i>
Villamanriquesur	<i>Cistus salvifolius</i>
Villamanriquesur	<i>Convolvulus arvensis</i>
Villamanriquesur	<i>Genista hirsuta</i>
Villamanriquesur	<i>Halimium halimifolium</i>
Villamanriquesur	<i>Lavandula stoechas</i>
Villamanriquesur	<i>Rosmarinus officinalis</i>

**Table S1B.** List of all pollinator species present at each of the sites and included in network analyses.

Site	Pollinator species
Aznalcazar	<i>Andrena flavipes</i>
Aznalcazar	<i>Andrena nigroaenea</i>

Site	Pollinator species
Aznalcazar	<i>Andrena nitidiuscula</i>
Aznalcazar	<i>Andrena</i> sp.
Aznalcazar	<i>Andrena tenuistriata</i>
Aznalcazar	<i>Anthophora dispar</i>
Aznalcazar	<i>Anthophora</i> sp.
Aznalcazar	<i>Apis mellifera</i>
Aznalcazar	<i>Bombus terrestris</i>
Aznalcazar	<i>Calliphora</i> sp.
Aznalcazar	<i>Cerceris sabulosa</i>
Aznalcazar	<i>Dasypoda argentata</i>
Aznalcazar	<i>Dasypoda cingulata</i>
Aznalcazar	<i>Dasypoda crassicornis</i>
Aznalcazar	<i>Empis</i> morpho1
Aznalcazar	<i>Eristalis arbustorum</i>
Aznalcazar	<i>Eucera alternans</i>
Aznalcazar	<i>Eucera codinai</i>
Aznalcazar	<i>Eucera collaris</i>
Aznalcazar	<i>Eucera elongatula</i>
Aznalcazar	<i>Eucera hispaliensis</i>
Aznalcazar	<i>Eucera</i> sp.
Aznalcazar	<i>Flavipanurgus venustus</i>
Aznalcazar	<i>Heliotaurus ruficollis</i>
Aznalcazar	<i>Hoplitis adunca</i>
Aznalcazar	<i>Lasioglossum</i> morpho1
Aznalcazar	<i>Macroglossum stellatarum</i>
Aznalcazar	<i>Merodon</i> sp.
Aznalcazar	<i>Osmia leaiana</i>
Aznalcazar	<i>Panurgus calcaratus</i>
Aznalcazar	<i>Pseudoanthidium lituratum</i>
Aznalcazar	<i>Rhyncomyia cuprea</i>
Aznalcazar	<i>Syrphidae</i> sp.
Aznalcazar	<i>Tabanus</i> morpho1
Aznalcazar	<i>Tabanus</i> morpho2
Aznalcazar	<i>Volucella elegans</i>
Aznalcazar	<i>Xylocopa cantabrita</i>
Bonares	<i>Ammophila heydeni</i>
Bonares	<i>Ancistrocerus biphaleratus</i>
Bonares	<i>Andrena hispania</i>
Bonares	<i>Andrena nigroaenea</i>
Bonares	<i>Andrena ovatula</i>
Bonares	<i>Andrena rhyssonota</i>
Bonares	<i>Andrena vulpecula</i>
Bonares	<i>Anthaxia</i> morpho1
Bonares	<i>Anthidium septemspinosum</i>
Bonares	<i>Apis mellifera</i>
Bonares	<i>Bombus terrestris</i>
Bonares	<i>Bombylius</i> sp.
Bonares	<i>Ceratina cucurbitina</i>
Bonares	<i>Colletes acutus</i>
Bonares	<i>Colletes ligatus</i>
Bonares	<i>Dasypoda hirtipes</i>
Bonares	<i>Dasypogon</i> morpho1
Bonares	<i>Empis</i> morpho1

Site	Pollinator species
Bonares	<i>Empis</i> sp.
Bonares	<i>Eristalis</i> sp.
Bonares	<i>Eucera collaris</i>
Bonares	<i>Eucera elongatula</i>
Bonares	<i>Eucera</i> sp.
Bonares	<i>Graphosoma lineatum</i>
Bonares	<i>Halictus scabiosae</i>
Bonares	<i>Hoplitis papaveris</i>
Bonares	<i>Lasioglossum</i> sp.
Bonares	<i>Megachile</i> sp.
Bonares	<i>Musca</i> sp.
Bonares	<i>Platynochaetus setosus</i>
Bonares	<i>Trypoxylon</i> morpho1
ConventodelaLuz	<i>Ammophila heydeni</i>
ConventodelaLuz	<i>Anthophora retusa</i>
ConventodelaLuz	<i>Apis mellifera</i>
ConventodelaLuz	<i>Bombus terrestris</i>
ConventodelaLuz	<i>Chasmatopterus villosulus</i>
ConventodelaLuz	<i>Eucera alternans</i>
ConventodelaLuz	<i>Exosoma lusitanicum</i>
ConventodelaLuz	<i>Ichneumonidae</i> morpho1
ConventodelaLuz	<i>Oxythyrea funesta</i>
ConventodelaLuz	<i>Platynochaetus setosus</i>
ConventodelaLuz	<i>Syrphidae</i> sp.
ConventodelaLuz	<i>Tropinota squalida</i>
ConventodelaLuz	<i>Vespula germanica</i>
ConventodelaLuz	<i>Xylocopa cantabrita</i>
CotitodeSantaTeresa	<i>Andrena rhyssonota</i>
CotitodeSantaTeresa	<i>Anthophora aestivalis</i>
CotitodeSantaTeresa	<i>Anthophora hispanica</i>
CotitodeSantaTeresa	<i>Apis mellifera</i>
CotitodeSantaTeresa	<i>Bombus terrestris</i>
CotitodeSantaTeresa	<i>Dasypoda cingulata</i>
CotitodeSantaTeresa	<i>Dasypoda crassicornis</i>
CotitodeSantaTeresa	<i>Eucera chrysopyga</i>
CotitodeSantaTeresa	<i>Eucera codinai</i>
CotitodeSantaTeresa	<i>Eucera</i> sp.
CotitodeSantaTeresa	<i>Heriades crenulatus</i>
CotitodeSantaTeresa	<i>Lasioglossum albocinctum</i>
CotitodeSantaTeresa	<i>Lasioglossum malachurum</i>
CotitodeSantaTeresa	<i>Lasioglossum</i> sp.
CotitodeSantaTeresa	<i>Lestica clypeata</i>
CotitodeSantaTeresa	<i>Macroglossum stellatarum</i>
CotitodeSantaTeresa	<i>Merodon</i> sp.
CotitodeSantaTeresa	<i>Musca</i> morpho1
CotitodeSantaTeresa	<i>Nemotelus</i> morpho1
CotitodeSantaTeresa	<i>Nomada agrestis</i>
CotitodeSantaTeresa	<i>Nomada</i> sp.
CotitodeSantaTeresa	<i>Platynochaetus setosus</i>
CotitodeSantaTeresa	<i>Trypoxylon</i> morpho1
CotitodeSantaTeresa	<i>Xylocopa cantabrita</i>
Elpinar	<i>Andrena ferrugineicrus</i>
Elpinar	<i>Andrena nigroaenea</i>

Site	<i>Pollinator species</i>
Elpinar	<i>Apis mellifera</i>
Elpinar	<i>Bombus terrestris</i>
Elpinar	<i>Ceratina cucurbitina</i>
Elpinar	<i>Empis tessellata</i>
Elpinar	<i>Eucera alternans</i>
Elpinar	<i>Eucera</i> sp.
Elpinar	<i>Lestica clypeata</i>
Elpinar	<i>Platynochaetus setosus</i>
Elpinar	<i>Psilothrix viridicoerulea</i>
Elpinar	<i>Xylocopa cantabrita</i>
Elpozo	<i>Andrena hispania</i>
Elpozo	<i>Andrena</i> sp.
Elpozo	<i>Apis mellifera</i>
Elpozo	<i>Bombus terrestris</i>
Elpozo	<i>Bombylius morpho1</i>
Elpozo	<i>Bombylius</i> sp.
Elpozo	<i>Bombylius torquatus</i>
Elpozo	<i>Colletes nigricans</i>
Elpozo	<i>Dasypoda crassicornis</i>
Elpozo	<i>Heliotaurus ruficollis</i>
Elpozo	<i>Lasioglossum bimaculatus</i>
Elpozo	<i>Lasioglossum imminutus</i>
Elpozo	<i>Merodon</i> sp.
Elpozo	<i>Musca</i> sp.
Elpozo	<i>Panurgus</i> sp.
Elpozo	<i>Psilothrix viridicoerulea</i>
Elpozo	<i>Xylocopa violacea</i>
Esparragal	<i>Andrena</i> sp.
Esparragal	<i>Anthophora atroalba</i>
Esparragal	<i>Apidae</i> sp.
Esparragal	<i>Apis mellifera</i>
Esparragal	<i>Cerceris morpho1</i>
Esparragal	<i>Chasmatopterus illigeri</i>
Esparragal	<i>Dasypoda</i> sp.
Esparragal	<i>Episyrphus balteatus</i>
Esparragal	<i>Eucera collaris</i>
Esparragal	<i>Halictus tridivisus</i>
Esparragal	<i>Lasioglossum bimaculatus</i>
Esparragal	<i>Lasioglossum leucozonium</i>
Esparragal	<i>Lasioglossum malachurum</i>
Esparragal	<i>Lasioglossum morpho1</i>
Esparragal	<i>Osmia fulviventris</i>
Esparragal	<i>Pieris rapae</i>
Esparragal	<i>Tenthredo</i> sp.
Esparragal	<i>Usia morpho1</i>
LaCunya	<i>Andrena rhyssonota</i>
LaCunya	<i>Anthophora dispar</i>
LaCunya	<i>Anthophora retusa</i>
LaCunya	<i>Apis mellifera</i>
LaCunya	<i>Bombus terrestris</i>
LaCunya	<i>Ceratina cucurbitina</i>
LaCunya	<i>Dasypoda cingulata</i>
LaCunya	<i>Empis morpho1</i>

Site	Pollinator species
LaCunya	<i>Heliotaurus ruficollis</i>
LaCunya	<i>Lasioglossum albocinctum</i>
LaCunya	<i>Lasioglossum imminutus</i>
LaCunya	<i>Lasioglossum malachurum</i>
LaCunya	<i>Lasioglossum</i> sp.
LaCunya	<i>Lasioglossum tridivisus</i>
LaCunya	<i>Lomatia morpho1</i>
LaCunya	<i>Panurgus banksianus</i>
LaCunya	<i>Pieris brassicae</i>
LaCunya	<i>Pseudoanthidium melanorum</i>
LaRocina	<i>Andrena</i> sp.
LaRocina	<i>Anthophora bimaculata</i>
LaRocina	<i>Anthophora retusa</i>
LaRocina	<i>Apis mellifera</i>
LaRocina	<i>Arachnospila morpho1</i>
LaRocina	<i>Bombus terrestris</i>
LaRocina	<i>Ceratina</i> sp.
LaRocina	<i>Colletes acutus</i>
LaRocina	<i>Colletes</i> sp.
LaRocina	<i>Dasypoda cingulata</i>
LaRocina	<i>Dasypoda crassicornis</i>
LaRocina	<i>Dasypoda</i> sp.
LaRocina	<i>Dischistus morpho1</i>
LaRocina	<i>Dischistus senex</i>
LaRocina	<i>Episyrrhus balteatus</i>
LaRocina	<i>Eristalis tenax</i>
LaRocina	<i>Helophilus trivittatus</i>
LaRocina	<i>Heriades crenulatus</i>
LaRocina	<i>Heriades truncorum</i>
LaRocina	<i>Hoplitis tridentata</i>
LaRocina	<i>Lasioglossum imminutus</i>
LaRocina	<i>Lasioglossum malachurum</i>
LaRocina	<i>Lasioglossum</i> sp.
LaRocina	<i>Malachius morpho1</i>
LaRocina	<i>Merodon</i> sp.
LaRocina	<i>Nomada agrestis</i>
LaRocina	<i>Nomada fucata</i>
LaRocina	<i>Nomada melathoracica</i>
LaRocina	<i>Osmia caerulea</i>
LaRocina	<i>Panurgus banksianus</i>
LaRocina	<i>Panurgus</i> sp.
LaRocina	<i>Rhyncomyia cuprea</i>
LaRocina	<i>Sphecodes</i> sp.
LaRocina	<i>Syrphidae</i> sp.
LaRocina	<i>Xylocopa cantabrita</i>
Lasmulas	<i>Andrena flavipes</i>
Lasmulas	<i>Andrena nigroaenea</i>
Lasmulas	<i>Andrena rhyssonota</i>
Lasmulas	<i>Anthophora dispar</i>
Lasmulas	<i>Anthophora hispanica</i>
Lasmulas	<i>Apis mellifera</i>
Lasmulas	<i>Bombylius</i> sp.
Lasmulas	<i>Bombylius torquatus</i>

Site	Pollinator species
Lasmulas	<i>Conopidae</i> sp.
Lasmulas	<i>Dasygaster albimana</i>
Lasmulas	<i>Empis</i> sp.
Lasmulas	<i>Empis testacea</i>
Lasmulas	<i>Eristalis similis</i>
Lasmulas	<i>Eucera chrysopyga</i>
Lasmulas	<i>Eucera</i> sp.
Lasmulas	<i>Flavipanurgus venustus</i>
Lasmulas	<i>Heliotaurus ruficollis</i>
Lasmulas	<i>Lasioglossum imminutus</i>
Lasmulas	<i>Lasioglossum malachurum</i>
Lasmulas	<i>Myxeris curculioides</i>
Lasmulas	<i>Panurgus calcaratus</i>
Lasmulas	<i>Panurgus dargius</i>
Lasmulas	<i>Xylocopa cantabrita</i>
Niebla	<i>Andrena flavipes</i>
Niebla	<i>Andrena labialis</i>
Niebla	<i>Andrena ovatula</i>
Niebla	<i>Andrena rhyssonota</i>
Niebla	<i>Andrena tenuistriata</i>
Niebla	<i>Anthidium septemspinatum</i>
Niebla	<i>Anthophora dispar</i>
Niebla	<i>Anthophora hispanica</i>
Niebla	<i>Anthophora</i> sp.
Niebla	<i>Apis mellifera</i>
Niebla	<i>Bombus terrestris</i>
Niebla	<i>Bombylius fimbriatus</i>
Niebla	<i>Bombylius</i> sp.
Niebla	<i>Ceratina callosa</i>
Niebla	<i>Colletes</i> sp.
Niebla	<i>Episyrrhus balteatus</i>
Niebla	<i>Eucera collaris</i>
Niebla	<i>Eucera notata</i>
Niebla	<i>Exosoma lusitanicum</i>
Niebla	<i>Halictus scabiosae</i>
Niebla	<i>Heliotaurus ruficollis</i>
Niebla	<i>Heriades crenulatus</i>
Niebla	<i>Lasioglossum malachurum</i>
Niebla	<i>Lasioglossum</i> sp.
Niebla	<i>Macrophya montana</i>
Niebla	<i>Merodon</i> sp.
Niebla	<i>Osmia bicornis</i>
Niebla	<i>Osmia submicans</i>
Niebla	<i>Panurgus banksianus</i>
Niebla	<i>Panurgus dargius</i>
Niebla	<i>Platynochaetus setosus</i>
Niebla	<i>Potosia cuprea</i>
Niebla	<i>Rhodanthidium sticticum</i>
Niebla	<i>Sphaerophoria scripta</i>
Niebla	<i>Systropha planidens</i>
Niebla	<i>Usia morpho1</i>
Niebla	<i>Usia morpho2</i>
Niebla	<i>Usia</i> sp.



Site	Pollinator species
Niebla	<i>Vespa germanica</i>
Niebla	<i>Xylocopa violacea</i>
PinaresdeHinojos	<i>Andrena hispania</i>
PinaresdeHinojos	<i>Apis mellifera</i>
PinaresdeHinojos	<i>Bombus terrestris</i>
PinaresdeHinojos	<i>Chrysuria refulgens</i>
PinaresdeHinojos	<i>Colletes acutus</i>
PinaresdeHinojos	<i>Colletes nigricans</i>
PinaresdeHinojos	<i>Colletes</i> sp.
PinaresdeHinojos	<i>Dasypoda crassicornis</i>
PinaresdeHinojos	<i>Lasioglossum bimaculatus</i>
PinaresdeHinojos	<i>Lasioglossum malachurum</i>
PinaresdeHinojos	<i>Lasioglossum</i> sp.
PinaresdeHinojos	<i>Nomada melathoracica</i>
PinaresdeHinojos	<i>Panurgus dargius</i>
PinaresdeHinojos	<i>Psilothrix viridicoerulea</i>
PinaresdeHinojos	<i>Tenthredo corynetes</i>
PinaresdeHinojos	<i>Xylocopa cantabrita</i>
Pinodelcuervo	<i>Ancistrocerus gazella</i>
Pinodelcuervo	<i>Ancistrocerus reconditus</i>
Pinodelcuervo	<i>Andrena hispania</i>
Pinodelcuervo	<i>Andrena</i> sp.
Pinodelcuervo	<i>Apis mellifera</i>
Pinodelcuervo	<i>Bombylella atra</i>
Pinodelcuervo	<i>Bombylius</i> sp.
Pinodelcuervo	<i>Ceratina cucurbitina</i>
Pinodelcuervo	<i>Cerceris morpho1</i>
Pinodelcuervo	<i>Dasypoda cingulata</i>
Pinodelcuervo	<i>Flavipanurgus venustus</i>
Pinodelcuervo	<i>Lasioglossum sexnotatum</i>
Pinodelcuervo	<i>Lomatia morpho1</i>
Pinodelcuervo	<i>Megascolia maculata</i>
Pinodelcuervo	<i>Merodon</i> sp.
Pinodelcuervo	<i>Musca</i> sp.
Pinodelcuervo	<i>Nomada melathoracica</i>
Pinodelcuervo	<i>Nomada merceti</i>
Pinodelcuervo	<i>Nomada</i> sp.
Pinodelcuervo	<i>Panurgus cephalotes</i>
Pinodelcuervo	<i>Pelecocera tricineta</i>
Pinodelcuervo	<i>Systoechus morpho1</i>
Pinodelcuervo	<i>Usia</i> sp.
Pinodelcuervo	<i>Xylocopa cantabrita</i>
Urbanizaciones	<i>Andrena</i> sp.
Urbanizaciones	<i>Andrena vulpecula</i>
Urbanizaciones	<i>Apis mellifera</i>
Urbanizaciones	<i>Bombus terrestris</i>
Urbanizaciones	<i>Bombylidae</i> morpho1
Urbanizaciones	<i>Bombylius</i> sp.
Urbanizaciones	<i>Ceratina</i> sp.
Urbanizaciones	<i>Colletes nigricans</i>
Urbanizaciones	<i>Dasypoda cingulata</i>
Urbanizaciones	<i>Dasypoda</i> sp.
Urbanizaciones	<i>Dischistus senex</i>

Site	Pollinator species
Urbanizaciones	<i>Eristalis tenax</i>
Urbanizaciones	<i>Eucera</i> sp.
Urbanizaciones	<i>Flavipanurgus venustus</i>
Urbanizaciones	<i>Lasioglossum albocinctum</i>
Urbanizaciones	<i>Lasioglossum imminutus</i>
Urbanizaciones	<i>Malachius morpho1</i>
Urbanizaciones	<i>Osmia submicans</i>
Urbanizaciones	<i>Sphaerophoria scripta</i>
Urbanizaciones	<i>Xylocopa cantabrita</i>
Villamanriqueeste	<i>Andrena fertoni</i>
Villamanriqueeste	<i>Andrena flavipes</i>
Villamanriqueeste	<i>Andrena hispania</i>
Villamanriqueeste	<i>Anthophora dispar</i>
Villamanriqueeste	<i>Anthophora</i> sp.
Villamanriqueeste	<i>Apis mellifera</i>
Villamanriqueeste	<i>Bembix oculata</i>
Villamanriqueeste	<i>Bombylella atra</i>
Villamanriqueeste	<i>Dasypoda albimana</i>
Villamanriqueeste	<i>Dasypoda cingulata</i>
Villamanriqueeste	<i>Dasypoda crassicornis</i>
Villamanriqueeste	<i>Dischistus senex</i>
Villamanriqueeste	<i>Episyrphus balteatus</i>
Villamanriqueeste	<i>Eristalis</i> sp.
Villamanriqueeste	<i>Eucera collaris</i>
Villamanriqueeste	<i>Eumenes coarctatus</i>
Villamanriqueeste	<i>Flavipanurgus venustus</i>
Villamanriqueeste	<i>Helophilus</i> sp.
Villamanriqueeste	<i>Lasioglossum imminutus</i>
Villamanriqueeste	<i>Lasioglossum malachurum</i>
Villamanriqueeste	<i>Lasioglossum</i> sp.
Villamanriqueeste	<i>Musca</i> sp.
Villamanriqueeste	<i>Oxythyrea funesta</i>
Villamanriqueeste	<i>Panurgus banksianus</i>
Villamanriqueeste	<i>Panurgus cephalotes</i>
Villamanriqueeste	<i>Panurgus dargius</i>
Villamanriqueeste	<i>Psilothrix viridicoerulea</i>
Villamanriqueeste	<i>Vespuła germanica</i>
Villamanriqueeste	<i>Xylocopa cantabrita</i>
Villamanriquesur	<i>Andrena flavipes</i>
Villamanriquesur	<i>Andrena nigroaenaea</i>
Villamanriquesur	<i>Apis mellifera</i>
Villamanriquesur	<i>Bibio</i> sp.
Villamanriquesur	<i>Calliphora</i> sp.
Villamanriquesur	<i>Dasypoda albimana</i>
Villamanriquesur	<i>Dasypoda cingulata</i>
Villamanriquesur	<i>Dasypoda crassicornis</i>
Villamanriquesur	<i>Dasypoda iberica</i>
Villamanriquesur	<i>Empis</i> sp.
Villamanriquesur	<i>Eristalinus taeniops</i>
Villamanriquesur	<i>Eucera bolivari</i>
Villamanriquesur	<i>Eucera collaris</i>
Villamanriquesur	<i>Eucera</i> sp.
Villamanriquesur	<i>Exosoma lusitanicum</i>

---

Site	Pollinator species
Villamanriquesur	<i>Lasioglossum malachurum</i>
Villamanriquesur	<i>Machimus</i> sp.
Villamanriquesur	<i>Merodon</i> sp.
Villamanriquesur	<i>Nomada</i> sp.
Villamanriquesur	<i>Pangonius micans</i>
Villamanriquesur	<i>Panurgus banksianus</i>
Villamanriquesur	<i>Panurgus calcaratus</i>
Villamanriquesur	<i>Panurgus dargius</i>
Villamanriquesur	<i>Pieris rapae</i>
Villamanriquesur	<i>Sphaerophoria scripta</i>

**Table S2.** Number of individuals per plant species sampled at each site to assess reproductive success.

Site	Plant species	Number of individuals
LaRocina	<i>Anchusa azurea</i>	6
Aznalcazar	<i>Asphodelus fistulosus</i>	9
Niebla	<i>Asphodelus fistulosus</i>	9
Pinodelcuervo	<i>Asphodelus fistulosus</i>	6
CotitodeSantaTeresa	<i>Astragalus lusitanicus</i>	2
CotitodeSantaTeresa	<i>Cistus albidus</i>	6
Bonares	<i>Cistus crispus</i>	6
Niebla	<i>Cistus crispus</i>	5
Pinodelcuervo	<i>Cistus crispus</i>	6
Villamanriquesur	<i>Cistus crispus</i>	3
Aznalcazar	<i>Cistus ladanifer</i>	6
Bonares	<i>Cistus ladanifer</i>	12
ConventodelaLuz	<i>Cistus ladanifer</i>	9
Lasmulas	<i>Cistus ladanifer</i>	6
Niebla	<i>Cistus ladanifer</i>	9
Pinodelcuervo	<i>Cistus ladanifer</i>	9
Villamanriquesur	<i>Cistus ladanifer</i>	7
Lasmulas	<i>Cistus libanotis</i>	6
PinaresdeHinojos	<i>Cistus libanotis</i>	6
Niebla	<i>Cistus monspeliensis</i>	3
Aznalcazar	<i>Cistus salvifolius</i>	9
Bonares	<i>Cistus salvifolius</i>	9
ConventodelaLuz	<i>Cistus salvifolius</i>	6
CotitodeSantaTeresa	<i>Cistus salvifolius</i>	5
Esparragal	<i>Cistus salvifolius</i>	3
LaCunya	<i>Cistus salvifolius</i>	6
Lasmulas	<i>Cistus salvifolius</i>	7
PinaresdeHinojos	<i>Cistus salvifolius</i>	6
Urbanizaciones	<i>Cistus salvifolius</i>	6
Villamanriqueeste	<i>Cistus salvifolius</i>	3
Bonares	<i>Halimium commutatum</i>	6
Esparragal	<i>Halimium commutatum</i>	7
LaRocina	<i>Halimium commutatum</i>	3
Lasmulas	<i>Halimium commutatum</i>	2
Pinodelcuervo	<i>Halimium commutatum</i>	6
Urbanizaciones	<i>Halimium commutatum</i>	6
ConventodelaLuz	<i>Halimium halimifolium</i>	3
Esparragal	<i>Halimium halimifolium</i>	3
LaRocina	<i>Halimium halimifolium</i>	3
Villamanriquesur	<i>Halimium halimifolium</i>	6
Aznalcazar	<i>Lavandula pedunculata</i>	4
Esparragal	<i>Lavandula pedunculata</i>	6
LaCunya	<i>Lavandula pedunculata</i>	5
Niebla	<i>Lavandula pedunculata</i>	9
Bonares	<i>Lavandula stoechas</i>	9
ConventodelaLuz	<i>Lavandula stoechas</i>	3
CotitodeSantaTeresa	<i>Lavandula stoechas</i>	3
Lasmulas	<i>Lavandula stoechas</i>	9
Urbanizaciones	<i>Lavandula stoechas</i>	9
Villamanriquesur	<i>Lavandula stoechas</i>	3
Niebla	<i>Phlomis purpurea</i>	6
PinaresdeHinojos	<i>Retama sphaerocarpa</i>	1
ConventodelaLuz	<i>Rosmarinus officinalis</i>	9
CotitodeSantaTeresa	<i>Rosmarinus officinalis</i>	6
Elpinar	<i>Rosmarinus officinalis</i>	8
Elpozo	<i>Rosmarinus officinalis</i>	6
LaCunya	<i>Rosmarinus officinalis</i>	6
LaRocina	<i>Rosmarinus officinalis</i>	1
Pinodelcuervo	<i>Rosmarinus officinalis</i>	9
Urbanizaciones	<i>Rosmarinus officinalis</i>	9
Elpozo	<i>Spartium junceum</i>	6
LaRocina	<i>Spartium junceum</i>	3

---

ConventodelaLuz	<i>Teucrium fruticans</i>	9
Bonares	<i>Ulex australis</i>	6
Pinodelcuervo	<i>Ulex australis</i>	3

---

**Table S3.** Number of fruits per plant species sampled at each site.

Site	Plant species	Number of fruits
Aznalcazar	<i>Asphodelus fistulosus</i>	22
Aznalcazar	<i>Cistus ladanifer</i>	4
Aznalcazar	<i>Cistus salvifolius</i>	10
Aznalcazar	<i>Lavandula pedunculata</i>	10
Bonares	<i>Cistus crispus</i>	15
Bonares	<i>Cistus ladanifer</i>	12
Bonares	<i>Cistus salvifolius</i>	14
Bonares	<i>Lavandula stoechas</i>	23
Bonares	<i>Ulex australis</i>	21
ConventodelaLuz	<i>Cistus ladanifer</i>	4
ConventodelaLuz	<i>Cistus salvifolius</i>	5
ConventodelaLuz	<i>Halimium halimifolium</i>	6
ConventodelaLuz	<i>Lavandula stoechas</i>	13
ConventodelaLuz	<i>Rosmarinus officinalis</i>	23
ConventodelaLuz	<i>Teucrium fruticans</i>	16
CotitodeSantaTeresa	<i>Astragalus lusitanicus</i>	2
CotitodeSantaTeresa	<i>Cistus albidus</i>	8
CotitodeSantaTeresa	<i>Cistus salvifolius</i>	11
CotitodeSantaTeresa	<i>Lavandula stoechas</i>	11
CotitodeSantaTeresa	<i>Rosmarinus officinalis</i>	16
Elpinar	<i>Rosmarinus officinalis</i>	23
Elpozo	<i>Rosmarinus officinalis</i>	36
Elpozo	<i>Spartium junceum</i>	13
Esparragal	<i>Cistus salvifolius</i>	4
Esparragal	<i>Halimium halimifolium</i>	7
Esparragal	<i>Lavandula pedunculata</i>	16
LaCunya	<i>Cistus salvifolius</i>	8
LaCunya	<i>Lavandula pedunculata</i>	11
LaCunya	<i>Rosmarinus officinalis</i>	18
LaRocina	<i>Anchusa azurea</i>	10
LaRocina	<i>Halimium commutatum</i>	6
LaRocina	<i>Halimium halimifolium</i>	1
LaRocina	<i>Rosmarinus officinalis</i>	8
LaRocina	<i>Spartium junceum</i>	10
Lasmulas	<i>Cistus ladanifer</i>	5
Lasmulas	<i>Cistus libanotis</i>	10
Lasmulas	<i>Cistus salvifolius</i>	7
Lasmulas	<i>Halimium commutatum</i>	3
Lasmulas	<i>Lavandula stoechas</i>	23
Niebla	<i>Asphodelus fistulosus</i>	19
Niebla	<i>Cistus crispus</i>	10
Niebla	<i>Cistus ladanifer</i>	2
Niebla	<i>Cistus monspeliensis</i>	4
Niebla	<i>Lavandula pedunculata</i>	15
Niebla	<i>Phlomis purpurea</i>	23
PinaresdeHinojos	<i>Cistus libanotis</i>	9
PinaresdeHinojos	<i>Cistus salvifolius</i>	9
PinaresdeHinojos	<i>Retama sphaerocarpa</i>	2
Pinodelcuervo	<i>Asphodelus fistulosus</i>	10
Pinodelcuervo	<i>Cistus crispus</i>	18
Pinodelcuervo	<i>Cistus ladanifer</i>	10
Pinodelcuervo	<i>Halimium commutatum</i>	7
Pinodelcuervo	<i>Rosmarinus officinalis</i>	11
Pinodelcuervo	<i>Ulex australis</i>	5
Urbanizaciones	<i>Cistus salvifolius</i>	10
Urbanizaciones	<i>Halimium commutatum</i>	8
Urbanizaciones	<i>Lavandula pedunculata</i>	8
Urbanizaciones	<i>Lavandula stoechas</i>	16
Urbanizaciones	<i>Rosmarinus officinalis</i>	22
Villamanriqueeste	<i>Cistus salvifolius</i>	6
Villamanriquesur	<i>Cistus crispus</i>	11
Villamanriquesur	<i>Cistus ladanifer</i>	4

---

Villamanriquesur	<i>Cistus salvifolius</i>	4
Villamanriquesur	<i>Halimium halimifolium</i>	10
Villamanriquesur	<i>Lavandula stoechas</i>	8

---

**Table S4.** List of plant species surveyed and their mating system.

Plant_family	Plant_genus	Plant_species	reproductive_system
Cistaceae	<i>Cistus</i>	<i>monspeliensis</i>	self-incompatible
Cistaceae	<i>Cistus</i>	<i>crispus</i>	self-incompatible
Cistaceae	<i>Cistus</i>	<i>ladanifer</i>	self-incompatible
Cistaceae	<i>Cistus</i>	<i>salviifolius</i>	self-incompatible
Cistaceae	<i>Cistus</i>	<i>albidus</i>	self-incompatible
Cistaceae	<i>Cistus</i>	<i>libanotis</i>	self-incompatible
Cistaceae	<i>Halimium</i>	<i>commutatum</i>	self-incompatible
Cistaceae	<i>Halimium</i>	<i>halimifolium</i>	self-incompatible
Lamiaceae	<i>Lavandula</i>	<i>pedunculata</i>	partially self-compatible
Lamiaceae	<i>Lavandula</i>	<i>stoechas</i>	partially self-compatible
Lamiaceae	<i>Teucrium</i>	<i>fruticans</i>	partially self-compatible
Lamiaceae	<i>Rosmarinus</i>	<i>officinalis</i>	partially self-compatible
Lamiaceae	<i>Phlomis</i>	<i>purpurea</i>	self-incompatible
Xanthorrhoeaceae	<i>Asphodelus</i>	<i>fistulosus</i>	partially self-compatible
Fabaceae	<i>Ulex</i>	<i>australis</i>	self-incompatible
Fabaceae	<i>Spartium</i>	<i>junceum</i>	self-incompatible
Fabaceae	<i>Astragalus</i>	<i>lusitanicus</i>	partially self-compatible
Fabaceae	<i>Retama</i>	<i>sphaerocarpa</i>	partially self-compatible
Boraginaceae	<i>Anchusa</i>	<i>azurea</i>	self-incompatible



**Table S5.** Results of GLM showing effect of simple visitation metrics on A) site-level average fruit weight based on best model selected and B) the same analysis removing one site that has a particularly large pollinator richness value to test whether this point might be driving the relationship.

A)	Estimate	Std. Error	t value
(Intercept)	0.08	0.01	8.56
<b>Pollinator richness</b>	<b>0.02</b>	<b>0.01</b>	<b>2.11</b>
Relative number of visits	0.01	0.01	0.78

B)	Estimate	Std. Error	t value
(Intercept)	0.08	0.01	8.04
<b>Pollinator richness</b>	<b>0.02</b>	<b>0.01</b>	<b>1.97</b>
Relative number of visits	0.01	0.01	0.76

**Table S6.** Results of GLM showing effect of simple visitation metrics on equity in reproductive success across plant species within a site based on best model selected (0.50 threshold).

	Estimate	Std. Error	Z value
(Intercept)	0.40	0.63	0.64
Pollinator richness	-0.41	1.18	-0.35
Relative number of visits	-0.28	0.72	-0.39
Nestedness	0.87	1.02	0.86
Pollinator niche complementarity	-0.51	1.32	-0.38

### References

- Abrams PA, Holt RD, Roth JD (1998) APPARENT COMPETITION OR APPARENT MUTUALISM? SHARED PREDATION WHEN POPULATIONS CYCLE. *Ecology*, **79**, 201–212. [https://doi.org/10.1890/0012-9658\(1998\)079\[0201:acoams\]2.0.co;2](https://doi.org/10.1890/0012-9658(1998)079[0201:acoams]2.0.co;2)
- Albrecht M, Schmid B, Hautier Y, Müller CB (2012) Diverse pollinator communities enhance plant reproductive success. *Proceedings of the Royal Society B: Biological Sciences*, **279**, 4845–4852. <https://doi.org/10.1098/rspb.2012.1621>
- Almeida-Neto M, Ulrich W (2011) A straightforward computational approach for measuring nestedness using quantitative matrices. *Environmental Modelling & Software*, **26**, 173–178. <https://doi.org/10.1016/j.envsoft.2010.08.003>
- Arceo-Gómez G, Schroeder A, Albor C, Ashman T-L, Knight TM, Bennett JM, Suarez B, Parra-Tabla V (2019) Global geographic patterns of heterospecific pollen receipt help uncover potential ecological and evolutionary impacts across plant communities worldwide. *Scientific Reports*, **9**. <https://doi.org/10.1038/s41598-019-44626-0>
- Bagchi R, Swinfield T, Gallery RE, Lewis OT, Gripenberg S, Narayan L, Freckleton RP (2010) Testing the Janzen-Connell mechanism: pathogens cause overcompensating density dependence in a tropical tree. *Ecology Letters*, **13**, 1262–1269. <https://doi.org/10.1111/j.1461-0248.2010.01520.x>
- Bartomeus I, Staver JR, Ward D, Aguado O (2018) Historical collections as a tool for assessing the global pollination crisis. *Philosophical Transactions of the Royal Society B: Biological Sciences*, **374**, 20170389. <https://doi.org/10.1098/rstb.2017.0389>
- Bascompte J, Jordano P (2007) Plant-Animal Mutualistic Networks: The Architecture of Biodiversity. *Annual Review of Ecology, Evolution, and Systematics*, **38**, 567–593. <https://doi.org/10.1146/annurev.ecolsys.38.091206.095818>
- Bascompte J, Jordano P, Melian CJ, Olesen JM (2003) The nested assembly of plant-animal mutualistic networks. *Proceedings of the National Academy of Sciences*, **100**, 9383–9387. <https://doi.org/10.1073/pnas.1633576100>
- Bastolla U, Fortuna MA, Pascual-García A, Ferrera A, Luque B, Bascompte J (2009) The architecture of mutualistic networks minimizes competition and increases biodiversity. *Nature*, **458**, 1018–1020. <https://doi.org/10.1038/nature07950>
- Benadi G, Blüthgen N, Hovestadt T, Poethke H-J (2013) When Can Plant-Pollinator Interactions Promote Plant Diversity? *The American Naturalist*, **182**, 131–146. <https://doi.org/10.1086/670942>
- Benadi G, Pauw A (2018) Frequency dependence of pollinator visitation rates suggests that pollination niches can allow plant species coexistence (I Bartomeus, Ed.). *Journal of Ecology*, **106**, 1892–1901. <https://doi.org/10.1111/1365-2745.13025>

- Bennett JM, Thompson A, Goia I, Feldmann R, Ștefan V, Bogdan A, Rakosy D, Beloiu M, Biro I-B, Bluemel S, Filip M, Madaj A-M, Martin A, Passonneau S, Kalisch DP, Scherer G, Knight TM (2018) A review of European studies on pollination networks and pollen limitation, and a case study designed to fill in a gap. *AoB PLANTS*, **10**. <https://doi.org/10.1093/aobpla/ply068>
- Biesmeijer JC, Roberts SPM, Reemer M, Ohlemüller R, Edwards M, Peeters T, Schaffers AP, Potts SG, Kleukers R, Thomas CD, Settele J, Kunin WE (2006) Parallel Declines in Pollinators and Insect-Pollinated Plants in Britain and the Netherlands. *Science*, **313**, 351–354. <https://doi.org/10.1126/science.1127863>
- Blüthgen N (2010) Why network analysis is often disconnected from community ecology: A critique and an ecologist's guide. *Basic and Applied Ecology*, **11**, 185–195. <https://doi.org/10.1016/j.baae.2010.01.001>
- Blüthgen N, Klein A-M (2011) Functional complementarity and specialisation: The role of biodiversity in plant-pollinator interactions. *Basic and Applied Ecology*, **12**, 282–291. <https://doi.org/10.1016/j.baae.2010.11.001>
- Blüthgen N, Menzel F, Blüthgen N (2006) *BMC Ecology*, **6**, 9. <https://doi.org/10.1186/1472-6785-6-9>
- Bommarco R, Marini L, Vaissière BE (2012) Insect pollination enhances seed yield, quality, and market value in oilseed rape. *Oecologia*, **169**, 1025–1032. <https://doi.org/10.1007/s00442-012-2271-6>
- Bruno JF, Stachowicz JJ, Bertness MD (2003) Inclusion of facilitation into ecological theory. *Trends in Ecology & Evolution*, **18**, 119–125. [https://doi.org/10.1016/s0169-5347\(02\)00045-9](https://doi.org/10.1016/s0169-5347(02)00045-9)
- Burnham KP, Anderson DR (Eds.) (2004) *Model selection and multimodel inference*. Springer New York. <https://doi.org/10.1007/b97636>
- Burnham KP, Anderson DR, Huyvaert KP (2010) AIC model selection and multimodel inference in behavioral ecology: some background, observations, and comparisons. *Behavioral Ecology and Sociobiology*, **65**, 23–35. <https://doi.org/10.1007/s00265-010-1029-6>
- Byrnes JEK, Gamfeldt L, Isbell F, Lefcheck JS, Griffin JN, Hector A, Cardinale BJ, Hooper DU, Dee LE, Emmett Duffy J (2014) Investigating the relationship between biodiversity and ecosystem multifunctionality: challenges and solutions (R Freckleton, Ed.). *Methods in Ecology and Evolution*, **5**, 111–124. <https://doi.org/10.1111/2041-210x.12143>
- Carvalho LG, Biesmeijer JC, Benadi G, Fründ J, Stang M, Bartomeus I, Kaiser-Bunbury CN, Baude M, Gomes SIF, Merckx V, Baldock KCR, Bennett ATD, Boada R, Bommarco R, Cartar R, Chacoff N, Dänhardt J, Dicks LV, Dormann CF, Ekroos J, Henson KSE, Holzschuh A, Junker RR, Lopezaraiza-Mikel M, Memmott J, Montero-Castaño A, Nelson IL, Petanidou T, Power EF, Rundlöf M, Smith HG, Stout JC, Temitope K, Tscharrntke T, Tscheulin T, Vilà M, Kunin WE (2014) The potential for indirect effects between co-flowering plants via shared pollinators depends on resource abundance, accessibility and relatedness (F Jordan, Ed.). *Ecology Letters*, **17**, 1389–1399. <https://doi.org/10.1111/ele.12342>
- Chacoff NP, Vázquez DP, Lomáscolo SB, Stevani EL, Dorado J, Padrón B (2011) Evaluating sampling completeness in a desert plant-pollinator network. *Journal of Animal Ecology*, **81**, 190–200. <https://doi.org/10.1111/j.1365-2656.2011.01883.x>
- Chao A, Colwell RK, Lin C-W, Gotelli NJ (2009) Sufficient sampling for asymptotic minimum species richness estimators. *Ecology*, **90**, 1125–1133. <https://doi.org/10.1890/07-2147.1>
- Delmas E, Besson M, Brice M-H, Burkle LA, Dalla Riva GV, Fortin M-J, Gravel D, Guimarães PR, Hembry DH, Newman EA, Olesen JM, Pires MM, Yeakel JD, Poisot T (2018) Analysing ecological networks of species interactions. *Biological Reviews*, **94**, 16–36. <https://doi.org/10.1111/brv.12433>
- Devoto M, Bailey S, Craze P, Memmott J (2012) Understanding and planning ecological restoration of plant-pollinator networks. *Ecology Letters*, **15**, 319–328. <https://doi.org/10.1111/j.1461-0248.2012.01740.x>
- Dormann CF, Frund J, Blüthgen N, Gruber B (2009) Indices, Graphs and Null Models: Analyzing Bipartite Ecological Networks. *The Open Ecology Journal*, **2**, 7–24. <https://doi.org/10.2174/1874213000902010007>
- European Commission. Directorate General for the Environment., IUCN (International Union for Conservation of Nature). (2014) *European red list of bees*. Publications Office, LU. <https://doi.org/10.2779/77003>
- Flanagan RJ, Mitchell RJ, Knutowski D, Karron JD (2009) Interspecific pollinator movements reduce pollen deposition and seed production in *Mimulus ringens* (Phrymaceae). *American Journal of Botany*, **96**, 809–815. <https://doi.org/10.3732/ajb.0800317>

- Fontaine C, Dajoz I, Meriguet J, Loreau M (2005) Functional Diversity of Plant-Pollinator Interaction Webs Enhances the Persistence of Plant Communities (N Waser, Ed.). *PLoS Biology*, **4**, e1. <https://doi.org/10.1371/journal.pbio.0040001>
- Fründ J, Dormann CF, Holzschuh A, Tscharrntke T (2013) Bee diversity effects on pollination depend on functional complementarity and niche shifts. *Ecology*, **94**, 2042–2054. <https://doi.org/10.1890/12-1620.1>
- Garibaldi LA, Carvalheiro LG, Leonhardt SD, Aizen MA, Blaauw BR, Isaacs R, Kuhlmann M, Kleijn D, Klein AM, Kremen C, Morandin L, Scheper J, Winfree R (2014) From research to action: enhancing crop yield through wild pollinators. *Frontiers in Ecology and the Environment*, **12**, 439–447. <https://doi.org/10.1890/130330>
- Garibaldi LA, Steffan-Dewenter I, Winfree R, Aizen MA, Bommarco R, Cunningham SA, Kremen C, Carvalheiro LG, Harder LD, Afik O, Bartomeus I, Benjamin F, Boreux V, Cariveau D, Chacoff NP, Dudenhofer JH, Freitas BM, Ghazoul J, Greenleaf S, Hipolito J, Holzschuh A, Howlett B, Isaacs R, Javorek SK, Kennedy CM, Krewenka KM, Krishnan S, Mandelik Y, Mayfield MM, Motzke I, Munyuli T, Nault BA, Otieno M, Petersen J, Pisanty G, Potts SG, Rader R, Ricketts TH, Rundlof M, Seymour CL, Schuepp C, Szentgyorgyi H, Taki H, Tscharrntke T, Vergara CH, Viana BF, Wanger TC, Westphal C, Williams N, Klein AM (2013) Wild Pollinators Enhance Fruit Set of Crops Regardless of Honey Bee Abundance. *Science*, **339**, 1608–1611. <https://doi.org/10.1126/science.1230200>
- Godoy O, Bartomeus I, Rohr RP, Saavedra S (2018) Towards the Integration of Niche and Network Theories. *Trends in Ecology & Evolution*, **33**, 287–300. <https://doi.org/10.1016/j.tree.2018.01.007>
- Godoy O, Kraft NJB, Levine JM (2014) Phylogenetic relatedness and the determinants of competitive outcomes (J Chave, Ed.). *Ecology Letters*, **17**, 836–844. <https://doi.org/10.1111/ele.12289>
- Goldberg DE, Barton AM (1992) Patterns and Consequences of Interspecific Competition in Natural Communities: A Review of Field Experiments with Plants. *The American Naturalist*, **139**, 771–801. <https://doi.org/10.1086/285357>
- Holt RD (1977) Predation, apparent competition, and the structure of prey communities. *Theoretical Population Biology*, **12**, 197–229. [https://doi.org/10.1016/0040-5809\(77\)90042-9](https://doi.org/10.1016/0040-5809(77)90042-9)
- Hsieh TC, Ma KH, Chao A (2016) iNEXT: an R package for rarefaction and extrapolation of species diversity (Hill numbers) (G McInerney, Ed.). *Methods in Ecology and Evolution*, **7**, 1451–1456. <https://doi.org/10.1111/2041-210x.12613>
- James A, Pitchford JW, Plank MJ (2012) Disentangling nestedness from models of ecological complexity. *Nature*, **487**, 227–230. <https://doi.org/10.1038/nature11214>
- Johnson CA, Bronstein JL (2019) Coexistence and competitive exclusion in mutualism. *Ecology*, e02708. <https://doi.org/10.1002/ecy.2708>
- Kaiser-Bunbury CN, Mougai J, Whittington AE, Valentin T, Gabriel R, Olesen JM, Blüthgen N (2017) Ecosystem restoration strengthens pollination network resilience and function. *Nature*, **542**, 223–227. <https://doi.org/10.1038/nature21071>
- Lanuzza JB, Bartomeus I, Godoy O (2018) Opposing effects of floral visitors and soil conditions on the determinants of competitive outcomes maintain species diversity in heterogeneous landscapes (JM Gómez, Ed.). *Ecology Letters*, **21**, 865–874. <https://doi.org/10.1111/ele.12954>
- Lázaro A, Gómez-Martínez C, Alomar D, González-Estévez MA, Traveset A (2020) Linking species-level network metrics to flower traits and plant fitness (N Rafferty, Ed.). *Journal of Ecology*, **108**, 1287–1298. <https://doi.org/10.1111/1365-2745.13334>
- Lázaro A, Lundgren R, Totland Ø (2014) Experimental reduction of pollinator visitation modifies plant-plant interactions for pollination. *Oikos*, **123**, 1037–1048. <https://doi.org/10.1111/oik.01268>
- MacArthur R, Levins R (1967) The Limiting Similarity, Convergence, and Divergence of Coexisting Species. *The American Naturalist*, **101**, 377–385. <https://doi.org/10.1086/282505>
- May RM, Arthur RHM (1972) Niche Overlap as a Function of Environmental Variability. *Proceedings of the National Academy of Sciences*, **69**, 1109–1113. <https://doi.org/10.1073/pnas.69.5.1109>
- Mayfield MM, Stouffer DB (2017) Higher-order interactions capture unexplained complexity in diverse communities. *Nature Ecology & Evolution*, **1**. <https://doi.org/10.1038/s41559-016-0062>
- Memmott J, Waser NM, Price MV (2004) Tolerance of pollination networks to species extinctions. *Proceedings of the Royal Society of London. Series B: Biological Sciences*, **271**, 2605–2611. <https://doi.org/10.1098/rspb.2004.2909>

- Morales CL, Traveset A (2008) Interspecific Pollen Transfer: Magnitude, Prevalence and Consequences for Plant Fitness. *Critical Reviews in Plant Sciences*, **27**, 221–238. <https://doi.org/10.1080/07352680802205631>
- Nakagawa S, Johnson PCD, Schielzeth H (2017) The coefficient of determination  $R^2$  and intra-class correlation coefficient from generalized linear mixed-effects models revisited and expanded. *Journal of The Royal Society Interface*, **14**, 20170213. <https://doi.org/10.1098/rsif.2017.0213>
- Pauw A (2013) Can pollination niches facilitate plant coexistence? *Trends in Ecology & Evolution*, **28**, 30–37. <https://doi.org/10.1016/j.tree.2012.07.019>
- Poisot T, Mouquet N, Gravel D (2013) Trophic complementarity drives the biodiversity-ecosystem functioning relationship in food webs (F Adler, Ed.). *Ecology Letters*, **16**, 853–861. <https://doi.org/10.1111/ele.12118>
- Potts SG, Biesmeijer JC, Kremen C, Neumann P, Schweiger O, Kunin WE (2010) Global pollinator declines: trends, impacts and drivers. *Trends in Ecology & Evolution*, **25**, 345–353. <https://doi.org/10.1016/j.tree.2010.01.007>
- R Development Core Team R (2011) R: A language and environment for statistical computing (RDC Team, Ed.). <https://doi.org/10.1007/978-3-540-74686-7>
- Saavedra S, Stouffer DB, Uzzi B, Bascompte J (2011) Strong contributors to network persistence are the most vulnerable to extinction. *Nature*, **478**, 233–235. <https://doi.org/10.1038/nature10433>
- Simmons BI, Hoeppeke C, Sutherland WJ (2019) Beware greedy algorithms (A Eklöf, Ed.). *Journal of Animal Ecology*, **88**, 804–807. <https://doi.org/10.1111/1365-2656.12963>
- Song C, Rohr RP, Saavedra S (2017) Why are some plant-pollinator networks more nested than others? (A Eklöf, Ed.). *Journal of Animal Ecology*, **86**, 1417–1424. <https://doi.org/10.1111/1365-2656.12749>
- Stavert JR, Bartomeus I, Beggs JR, Gaskett AC, Pattenmore DE (2019) Plant species dominance increases pollination complementarity and plant reproductive function. *Ecology*, **100**. <https://doi.org/10.1002/ecy.2749>
- Thébault E, Fontaine C (2010) Stability of Ecological Communities and the Architecture of Mutualistic and Trophic Networks. *Science*, **329**, 853–856. <https://doi.org/10.1126/science.1188321>
- Thompson RM, Brose U, Dunne JA, Hall RO, Hladysz S, Kitching RL, Martinez ND, Rantala H, Romanuk TN, Stouffer DB, Tylianakis JM (2012) Food webs: reconciling the structure and function of biodiversity. *Trends in Ecology & Evolution*, **27**, 689–697. <https://doi.org/10.1016/j.tree.2012.08.005>
- Thomson DM (2018) Effects of long-term variation in pollinator abundance and diversity on reproduction of a generalist plant (I Bartomeus, Ed.). *Journal of Ecology*, **107**, 491–502. <https://doi.org/10.1111/1365-2745.13055>
- Tilman D (1982) *Resource competition and community structure*. (MPB-17), volume 17. Princeton University Press. <https://doi.org/10.1515/9780691209654>
- Valdovinos FS, Brosi BJ, Briggs HM, Moisset de Espanés P, Ramos-Jiliberto R, Martinez ND (2016) Niche partitioning due to adaptive foraging reverses effects of nestedness and connectance on pollination network stability (J Chase, Ed.). *Ecology Letters*, **19**, 1277–1286. <https://doi.org/10.1111/ele.12664>
- Vanbergen AJ, Woodcock BA, Gray A, Grant F, Telford A, Lambdon P, Chapman DS, Pywell RF, Heard MS, Cavers S (2013) Grazing alters insect visitation networks and plant mating systems (A Brody, Ed.). *Functional Ecology*, **28**, 178–189. <https://doi.org/10.1111/1365-2435.12191>
- Winfree R (2013) Global change, biodiversity, and ecosystem services: What can we learn from studies of pollination? *Basic and Applied Ecology*, **14**, 453–460. <https://doi.org/10.1016/j.baae.2013.07.004>
- Woodward G, Hildrew AG (2002) Body-size determinants of niche overlap and intraguild predation within a complex food web. *Journal of Animal Ecology*, **71**, 1063–1074. <https://doi.org/10.1046/j.1365-2656.2002.00669.x>
- Zhang J (2016) *Spaa: SPecies association analysis*. <https://github.com/helixcn/spaa>