

Peer Community Journal

Section: Evolutionary Biology

RESEARCH ARTICLE

Published
2021-11-26

Cite as

S.G. Olvera-Vazquez, C. Remoué, A. Venon, A. Rousselet, O. Grandcolas, M. Azrine, L. Momont, M. Galan, L. Benoit, G. M. David, A. Alhmedi, T. Beliën, G. Alins, P. Franck, A. Haddioui, S.K. Jacobsen, R. Andreev, S. Simon, L. Sigsgaard, E. Guibert, L. Tournant, F. Gazel, K. Mody, Y. Khachtib, A. Roman, T.M. Ursu, I.A. Zakharov, H. Belcram, M. Harry, M. Roth, J.C. Simon, S. Oram, J.M. Ricard, A. Agnello, E. H. Beers, J. Engelman, I. Balti, A. Salhi-Hannachi, H. Zhang, H. Tu, C. Mottet, B. Barrès, A. Degrave, J. Razmjou, T. Giraud, M. Falque, E. Dapena, M. Miñarro, L. Jardillier, P. Deschamps, E. Joussetin and A. Cornille (2021) *Large-scale geography survey provides insights into the colonization history of a major aphid pest on its cultivated apple host in Europe, North America and North Africa*, Peer Community Journal, 1: e34.

Correspondence

amandine.cornille@gmail.com

Peer-review

Peer reviewed and
recommended by

PCI Evolutionary Biology,

<https://doi.org/10.24072/pci.evolbiol.100134>



This article is licensed
under the Creative Commons
Attribution 4.0 License.

Large-scale geography survey provides insights into the colonization history of a major aphid pest on its cultivated apple host in Europe, North America and North Africa

S.G. Olvera-Vazquez¹, C. Remoué¹, A. Venon¹, A. Rousselet¹, O. Grandcolas¹, M. Azrine¹, L. Momont¹, M. Galan², L. Benoit², G. M. David³, A. Alhmedi⁴, T. Beliën⁴, G. Alins⁵, P. Franck⁶, A. Haddioui⁷, S.K. Jacobsen⁸, R. Andreev⁹, S. Simon¹⁰, L. Sigsgaard⁸, E. Guibert¹¹, L. Tournant¹², F. Gazel¹³, K. Mody¹⁴, Y. Khachtib⁷, A. Roman¹⁵, T.M. Ursu¹⁵, I.A. Zakharov¹⁶, H. Belcram¹, M. Harry¹⁷, M. Roth¹⁸, J.C. Simon¹⁹, S. Oram²⁰, J.M. Ricard¹¹, A. Agnello²¹, E. H. Beers²², J. Engelman²³, I. Balti²⁴, A. Salhi-Hannachi²⁴, H. Zhang²⁵, H. Tu²⁵, C. Mottet²⁶, B. Barrès²⁶, A. Degrave²⁷, J. Razmjou²⁸, T. Giraud³, M. Falque¹, E. Dapena²⁹, M. Miñarro²⁹, L. Jardillier³, P. Deschamps³, E. Joussetin², and A. Cornille¹

Volume 1 (2021), article e34

<https://doi.org/10.24072/pcjournal.26>

Abstract

With frequent host shifts involving the colonization of new hosts across large geographical ranges, crop pests are good models for examining the mechanisms of rapid colonization. The microbial partners of pest insects may also be involved in or affected by colonization processes, which has been little studied so far. We investigated the demographic history of the rosy apple aphid, *Dysaphis plantaginea*, a major pest of the cultivated apple (*Malus domestica*) in Europe, North Africa and North America, as well as the diversity of its microbiota. We genotyped a comprehensive sample of 714 colonies from Europe, Morocco and the US using mitochondrial (CytB and CO1), bacterial (16s rRNA and TrnPB), and 30 microsatellite markers. We detected five populations spread across the US, Morocco, Western and Eastern Europe and Spain. Populations showed weak genetic differentiation and high genetic diversity, except the ones from Morocco and North America that are likely the result of recent colonization events. Coalescent-based inferences revealed high levels of gene flow among populations during the colonization but did not allow determining the sequence of colonization of Europe, North America and Morocco by *D. plantaginea*, likely because of the weak genetic differentiation and the occurrence of gene flow among populations. We found that *D. plantaginea* rarely hosts other endosymbiotic bacteria than its obligate nutritional symbiont *Buchnera aphidicola*. This suggests that secondary endosymbionts did not play an important role in the rapid spread of the rosy apple aphid. These findings have fundamental importance for understanding pest colonization processes and implications for sustainable pest control programs.

¹Université Paris Saclay, INRAE, CNRS, AgroParisTech, GQE - Le Moulon, 91190 Gif-sur-Yvette, France, ²INRAE, UMR 1062, Centre de Biologie pour la Gestion des Populations CBGP (INRAE, IRD, CIRAD, Montpellier SupAgro), Montpellier-sur-Lez, 34980, France, ³Ecologie Systematique et Evolution, CNRS, AgroParisTech, Université Paris-Saclay, 91400, Orsay, France, ⁴Department of Zoology, Fruit Research Center (Pcfrit Npo), Sint-Truiden, Belgium, ⁵Institut de Recerca i Tecnologia Agroalimentàries, IRTA-Fruit Production, PCiTAL, Parc de Gardeny, edifici Fruitcentre, 25003 Lleida, Spain, ⁶INRAE, UR1115, Plantes et Système de cultures Horticoles (PSH), Agroparc CS 40509, Avignon, F-84000, France, ⁷Laboratory of Biotechnology and Valorisation of Plant Genetic Resources, Faculty of Sciences and Techniques, University of Sultan Moulay Slimane, Beni Mellal, Morocco, ⁸Department of Plant and Environmental Sciences, University of Copenhagen, Denmark, ⁹Department of Entomology, Agricultural University, Plovdiv, Bulgaria, ¹⁰Unité Expérimentale UERI 695, INRAE, 460 Chemin de Gotheron, F-26320 Saint-Marcel-lès-Valence, France, ¹¹CTIFL, Centre opérationnel de Balandran, Bellegarde, France, ¹²Fédération Régionale de Défense contre les Organismes Nuisibles Nord Pas-de-Calais, Loos-en-Gohelle, France, ¹³Unité Expérimentale Arboricole - UEA - 0393, INRAE, Bordeaux, France, ¹⁴Department of Applied Ecology, Hochschule Geisenheim University, Geisenheim, Germany, ¹⁵NIRDBS, Institute of Biological Research Cluj-Napoca, 400015, Cluj-Napoca, Romania, ¹⁶Vavilov Institute of General Genetics RAS, Moscow, Russia, ¹⁷Laboratoire Évolution, Génomes, Comportement, Écologie, UMR9191 CNRS/IRD/Université Paris-Saclay, Gif-sur-Yvette, France, ¹⁸GAFI, INRAE, 84140, Montfavet, France, ¹⁹INRAE, UMR IGEPP, Domaine de la Motte, Le Rheu, France, ²⁰People's Trust for Endangered Species, London, UK, ²¹Department of Entomology, Cornell AgriTech, Cornell University, Geneva, NY, USA, ²²Department of Entomology, Tree Fruit Research and Extension Center, Washington State University, Wenatchee, WA, USA, ²³Virginia Tech, Alson H. Smith, Jr. Agricultural Research and Extension Center, 595 Laurel Grove Road, Winchester, VA 22602, USA, ²⁴Department of Biology, Faculty of Science of Tunis, University of Tunis El Manar, 2092, Tunis, Tunisia, ²⁵Zhengzhou Fruit Research Institute, Chinese Academy of Agricultural Sciences, 450009, Zhengzhou, China, ²⁶Université de Lyon, Anses, INRAE, USC CASPER, 69007 Lyon, France, ²⁷IRHS, INRAE, Agrocampus-Ouest, Université d'Angers, SFR 4207 QUASAV, Beaucouzé, France, ²⁸Department of Plant Protection, Faculty of Agriculture and natural Resources, University of Mohaghegh Ardabili, Iran, ²⁹Servicio Regional de Investigación y Desarrollo Agroalimentario, Ctra. AS-267, PK 19, E-33300, Villaviciosa, Asturias, Spain

Peer Community Journal is a member of the
Centre Mersenne for Open Scientific Publishing

<http://www.centre-mersenne.org/>

CENTRE
MERSENNE

Introduction

Understanding the evolutionary processes underlying the colonization of new environments and the range expansion of species is a key goal in evolutionary biology (Austerlitz *et al.* 1997; Excoffier *et al.* 2009; Rius & Darling 2014; Hoffmann & Courchamp 2016; Angert *et al.* 2020). Crop pests in agro-ecosystems, with their frequent colonization of new hosts across large geographic ranges, are good models to study the mechanisms of rapid colonization and range expansion (Stukenbrock & McDonald 2008; Gladieux *et al.* 2014; Garnas *et al.* 2016). The key questions relating to the evolutionary processes underlying the colonization, spread and success of crop pests pertain to the geographic origin of the source population, the location of the colonization routes, the extent to which genetic diversity is reduced via founder effects (Blakeslee *et al.* 2020) and the extent of gene flow among populations during the spread of the plant parasite (Stukenbrock 2016). Current and future threats to biodiversity and their consequences on ecosystem health and services make these questions more relevant than ever. Understanding the routes of pest colonization contributes greatly to the efforts to protect crops against future pest emergence and therefore has direct implications for breeding and agronomic programs that develop biological methods of parasite control (Estoup & Guillemaud 2010; Lawson Handley *et al.* 2011; Turcotte *et al.* 2017; Fraimout *et al.* 2017).

Historically, gene genealogies have been a rich source of information into a species' evolutionary history that could be applied to the study of colonization (Posada & Crandall 2001; Hickerson *et al.* 2010; Bloomquist *et al.* 2010). The characterization of population structure, genetic diversity and demographic history (divergence time, migration rates among populations and effective population size) are also essential to understand the evolutionary processes underlying rapid colonization and range of geographic expansion (Excoffier *et al.* 2009). Approximate Bayesian computation methods (referred to as "ABC" hereafter) provide a robust framework for inferring a species' history by allowing the comparison of alternative demographic models and the estimation of their associated parameters (divergence time, migration rate, effective population size) (Bertorelle *et al.* 2010; Csilléry *et al.* 2010, 2012; Roux & Pannell 2015; Estoup *et al.* 2018; Raynal *et al.* 2019). The power of the ABC methods has made it possible to retrace the evolutionary history of notorious plant parasites (*e.g.*, *Plasmopara viticola* (Berk & Curtis) Berl. & de Toni (Fontaine *et al.* 2021), *Microbotryum lychnidis-dioicae* (DC. Ex Liro) G. Deml & Oberw. (Gladieux *et al.* 2015)), insect crop pests (*e.g.*, *Batrocera dorsalis* Hendel (Aketarawong *et al.* 2014), *Drosophila suzukii* Matsumura (Fraimout *et al.* 2017), *Daktulosphaira vitifoliae* Fitch (Rispe *et al.* 2020) and invasive alien species posing a threat to the native fauna (*e.g.*, *Harmonia axyridis* Pallas (Lawson Handley *et al.* 2011)). These studies have identified the source populations, reconstructed complex colonization routes, and determined the pace of geographic range expansion, often emphasizing the role of human transportation in the spread of these noxious species. Recently, the ABC approach, combined with machine learning (*i.e.*, random forest, referred to as "ABC-RF" hereafter (Estoup *et al.* 2018; Raynal *et al.* 2019), was used to demonstrate that the African arid-adapted locust pest species *Schistocerca gregaria* Forsskål colonized Africa through major migration events driven by the last glacial climatic episodes (Chapuis *et al.* 2020). Yet, ABC methods are underused for estimating the extent of gene flow during parasite colonization (but see (Fraimout *et al.* 2017)). Most studies assume punctual admixture events among populations, but rarely continuous gene flow among populations. Only recently has the new ABC-RF approach been used to infer the invasion routes, evolutionary history and extent of gene flow in the spotted-wing *D. suzukii* Matsumura from microsatellite markers (Fraimout *et al.* 2017) (referred to as SSR for simple sequence repeat hereafter). Beyond population genomics approaches, and in the special case of insect pests, the investigation of colonization history could also benefit from the characterization of insect endosymbiotic bacterial communities. Indeed, many insect pests host a consortium of endosymbiotic bacteria that mediate their adaptation to new environmental conditions (Frago *et al.* 2020). Variations in the endosymbiotic consortium along colonization routes could facilitate the rapid adaptation of insect pests to different environments (Lenhart & White 2020) and, in consequence, its spread. Alternatively, if the colonization stems from only a few populations, it might be accompanied by a loss of endosymbiont diversity along the colonization routes.

Aphids are a good study system to investigate the evolutionary processes involved in range expansion and the colonization of new environments. Aphids infest a wide range of host species and can be major

pests of many crop plants (Blackman & Eastop 2000). Some aphid species have now become cosmopolitan following the dissemination of crops around the globe (Zepeda-Paulo *et al.* 2010; Kirk *et al.* 2013; Brady *et al.* 2014; Zhang *et al.* 2014). The clonal reproduction of aphids during spring and summer is one of the reasons put forward to account for their remarkable success worldwide. Indeed, asexual reproduction allows for a rapid increase in population size after the colonization of a favorable new environment (Simon *et al.* 2002, 2010; Figueroa *et al.* 2018). So far, only a handful of studies have reconstructed the colonization history of aphid crop pests by combining population genetics approaches using the information from SSR, sequence or single nucleotide polymorphism (SNP) markers (Peccoud *et al.* 2008; Zepeda-Paulo *et al.* 2010; Piffaretti *et al.* 2013; Zhang *et al.* 2014; Zhou *et al.* 2015; Kim *et al.* 2016; Fang *et al.* 2018; Morales-Hojas *et al.* 2020; Giordano *et al.* 2020; Leclair *et al.* 2021). These studies demonstrated that aphid species can spread very quickly across the world, probably via plants transported by humans and/or wind. These investigations detected a colonization involving several populations with high genetic diversity, possibly with gene flow (Wei *et al.* 2005; Wang *et al.* 2015) and/or a few “super-clones”, *i.e.*, predominant genotypes widespread in space and time (Vorburger *et al.* 2003; Piffaretti *et al.* 2013; Figueroa *et al.* 2018). Assessing the genetic diversity, genetic structure and the extent of gene flow among populations in aphids are therefore central to determining the evolutionary processes that have occurred during aphid colonization.

Associating the reconstruction of aphid colonization history with the characterization of their endosymbiotic bacterial community can shed light on the processes of their dispersal. Aphids harbor both obligate symbionts that supply them with the nutrients missing from their diet (Buchner 1965) and facultative symbionts that can provide various selective advantages in specific environmental conditions (Haynes *et al.* 2003; Oliver *et al.* 2009). The obligate aphid endosymbiont bacterium *Buchnera aphidicola* has strictly codiverged with most aphid species (Jousselin *et al.* 2009). Bacterial markers (*e.g.*, *TrpB*), along with other typical markers (*e.g.*, *CO1* or *CytB*), can be used to infer the phylogenetic history of aphid species and to investigate signals of recent range expansions (Zhang *et al.* 2014; Popkin *et al.* 2017). Beyond the use of bacterial genomes to help reconstruct aphid phylogeography, the composition of the bacterial populations in aphids might also help to assess the importance of facultative bacteria for colonizing new geographic regions. Many studies have investigated variation in bacterial communities associated with the pea aphid (*Acyrtosiphon pisum* Harris), revealing geographical variation, host-specific differentiation and associations with environmental factors such as temperature, host plants, and natural enemies (Tsuchida *et al.* 2002; Russell *et al.* 2013; Zepeda-Paulo *et al.* 2018; Leclair *et al.* 2021). The effect of endosymbionts on aphid fitness has been confirmed experimentally in certain cases (Leclair *et al.* 2016; Frago *et al.* 2017). Nevertheless, studies on a global scale in non-model aphid species are still scarce (Zytynska & Weisser 2016), and there are as of yet no studies simultaneously investigating the colonization routes of an aphid species and the changes in symbiotic associations along this route.

Dysaphis plantaginea Passerini, the rosy apple aphid, is one of the most harmful aphid pests attacking cultivated apple trees (*Malus domestica* Borkh), causing major economic losses every year, especially in Europe, North Africa and North America (Wilkaniec 1993; Guillemaud *et al.* 2011; Warneys *et al.* 2018). This aphid species occurs across temperate regions (Central and Southwest Asia, North Africa, North America, and Europe) (Blackman & Eastop 2000) in cultivated apple orchards. The rosy apple aphid completes its life cycle on two successive host plants: the cultivated apple trees as its sole primary host plant, from early autumn to late spring, and the plantain herb *Plantago* spp. as a secondary host plant during summer (Bonnemaison 1959). The rosy apple aphid reproduces through cyclical parthenogenesis whereby clonal reproduction alternates with a sexual reproduction, the latter taking place in autumn when females lay fertilized overwintering eggs on apple trees. Eggs hatch in early spring (Blommers *et al.* 2004). While its phylogenetic relationships with other aphid species are quite well resolved, the evolutionary history of *D. plantaginea* has been little explored to date (but see (Guillemaud *et al.* 2011)). The native geographical range of *D. plantaginea* and its ancestral host range are not known. It might have been associated with *Malus sieversii*, the primary ancestor of the cultivated apple (*M. domestica*) (Harris *et al.* 2002), and then colonized Europe during the journey of the cultivated apple along the Silk Routes from Asia to Europe. Alternatively, the rosy apple aphid may have colonized its cultivated apple host in Europe rapidly and recently, about 1,500 years ago when the Greeks brought the cultivated apple to Europe from Central Asia (Cornille *et al.* 2014, 2019). These scenarios are derived from our knowledge of the domestication history of apples; there are no data on the rosy apple aphid that would support any of these

scenarios. The colonization routes of the rosy apple aphid are unknown, except those historical records document the introduction of the rosy apple aphid in North America was recent (ca. 1890s) (Footitt *et al.* 2006). More generally, the population structure and the extent of gene flow among populations throughout the geographic distribution of *D. plantaginea* are largely unknown, including the regions where it causes the most damage in apple orchards, *i.e.*, North America, North Africa and Europe. There are also no data so far regarding the diversity of endosymbionts across a large geographical range in aphids. Here, we investigate the colonization history of this major fruit tree pest using multiple approaches and genetic datasets, drawn from comprehensive samples taken from the primary host, the cultivated apple in Europe, North America and Morocco. Note that, despite repeated attempts, we failed to collect *D. plantaginea* in its putative source region where apple trees originated in Central Asia, preventing us from fully addressing its earliest colonization history. Therefore, we aimed to answer the following questions focusing on regions most negatively affected by the rosy apple aphid, *i.e.*, Europe, North America and North Africa: i) What is the spatial genetic diversity and population structure of *D. plantaginea* across Europe, the US and Morocco? Can we detect genetically differentiated populations, and/or recent bottlenecks in colonizing populations? ii) Did gene flow occur among populations during colonization? iii) Did *D. plantaginea* populations lose or gain symbionts during their colonization?

Material and methods

Samples and DNA extraction

Each sample described hereafter consisted of a single aphid colony of 10-15 females collected on a host plant during the spring of 2017 and 2018. Sampling only one colony per tree ensured that the sample did not contain different clones, which can occur on the same tree. Each colony was kept in ethanol (96%) at -20°C until DNA extraction. For the three methods described below (*i.e.*, SSR genotyping, Sanger sequencing of the aphid mitochondrial *CO1*, *CytB* markers, and *TrpB* bacterial marker, and metabarcoding of the 16S rRNA bacterial marker), DNA was isolated from a single individual per colony using a new standardized protocol (Supplementary material Text S1). We used different individuals to obtain DNA for the amplification of the different markers. For the sake of simplicity, colonies are referred to as 'individual' or 'samples' hereafter. Note that samples used for 16S rRNA sequencing underwent two extra chemical washes before DNA extraction to remove the external bacteria that could be present on the aphid's cuticle. The extra chemical washes consisted of a first wash with dithiothreitol/DTT (50 mM) for 4 minutes, followed by a second wash with potassium hydroxide/KOH (200 mM) for 4 minutes. The KOH wash was performed twice. Five negative controls were also included ((Jousselin *et al.* 2016), Table S1).

Different sample sizes were used for each of the three methods (*i.e.*, SSR genotyping, metabarcoding of the 16S rRNA bacterial marker, Sanger sequencing of the aphid *CO1*, *CytB* and *TrpB* markers). For each sample, the locality, sample collector identity, host plant species, latitude, longitude and use in this study (genotyping, Sanger sequencing and/or metabarcoding) are given in Table S1.

The largest sample was collected for SSR genotyping, comprising 667 *D. plantaginea* samples (colonies) from Europe, Morocco and the US, from three hosts: *M. domestica* (50 sites, *i.e.*, orchards, $N = 654$), but also *M. sylvestris* (one site, Alta Ribagorça in Spain, $N = 7$), the European wild apple, and *P. lanceolata*, the secondary host (one site, Loos-en-Gohelle in France, $N = 6$). The 667 samples originated from 52 different geographic sites (*i.e.*, 52 orchards) spread over 13 countries; seven to 15 individuals were collected at each site (Table S1, Figure S1). We tried to obtain samples from Eastern Asia and Central Asia during fieldwork in 2017 and 2018, and through our collaborative network. However, despite our attempts and although *D. plantaginea* is referenced in the literature on various hosts in several Central Asian countries (Aslan & Karaca 2005; Holman 2009; CAB International 2020), it was not observed in these areas.

For the investigation of the bacterial 16S rRNA region, we used 178 *D. plantaginea* individuals out of the same 667 colonies used for SSR genotyping (Table S1). We selected two to three samples (colonies) per site to cover a wide and even spatial distribution across Europe and North America. The selected 178 individuals were collected across 12 countries on *M. domestica*, except eight on *M. sylvestris* (Table S1). Morocco was the only country not represented for the bacterial 16S rRNA analysis.

For Sanger sequencing of *CO1*, *TrpB* and *CytB*, we used a total of 84 samples belonging to eight aphid species (*D. plantaginea*, *Dysaphis* sp., *Aphis citricola* van der Goot, *Aphis pomi* de Geer, *Aphis spiraeicola* Patch, *Melanaphis pyraria* Passerini, *Myzus persicae* Sulzer, *Rhopalosiphum insertum* Walker) sampled on

five host plant species (*M. domestica*, *M. sylvestris*, *Sorbus aucuparia*, *Prunus persica*, *Pyrus communis*). The species were chosen to represent the aphid genera known to be closely related to the rosy apple aphid (Choi *et al.* 2018). One to three individuals from each of the geographic sites listed above and in Table S1 were sampled, for a total of 67 samples for *D. plantaginea*. The 17 additional samples from seven other aphid species (one to two samples per aphid species) were collected on the cultivated apple and other fruit tree species (Table S1).

PCR and Sanger sequencing

We amplified the coding regions from the aphid mitochondrial cytochrome c oxidase subunit I (*CO1*) gene and the cytochrome B (*CytB*) gene, as well as the Tryptophan synthase subunit B (*TrpB*) from Buchnera. Fragments were amplified following the protocol reported in Popkin *et al.* (2017) with some modifications (Table S2). The final PCR volume was 30 μ L, containing Buffer (1X), MgCl₂ (1.5 mM), dNTP (0.1 mM), Forward and Reverse primers (0.7 μ M), 5 μ L of Taq polymerase (1 U), and 5 μ L of DNA (1/10 dilution). Amplification products were visualized on an agarose gel 1.5% stained with ethidium bromide under ultraviolet light. We prepared four 96-well plates with 15 μ L of PCR products and a negative control. Plates were sent to Eurofins Genomics France SAS for sequencing.

Chromatograms were inspected and corrected manually with CodonCode Aligner version 8.0.1 (www.codoncode.com), assigned as an 'N' when two peaks overlapped. Alignment, evaluation of all coding genes for frameshifts and elimination of pseudogenes were performed with MEGA version 7.0.26 (Kumar *et al.* 2016). The neutral evolution of each gene, and thus its suitability for phylogenetic and population genetic analyses, was assessed with the McDonald and Kreitman test (McDonald & Kreitman 1991; Egea *et al.* 2008) (Table S3). Two samples of *Brachycaudus helichrysi* Kaltenbach, a pest of *Prunus*, for which sequences of *CO1* (NCBI sequence identifiers: KX381827.1, KX381828.1), *CytB* (KX381989.1, KX381990.1), and *TrpB* (KX382153.1, KX38215.1) were available (Popkin *et al.*, 2017), were added in the phylogenetic analyses. Sequences were concatenated, resulting in a data matrix of 86 concatenated sequences.

Phylogenetic tree and taxonomic assignation

We checked the taxonomic assignation of the samples used in this study by running phylogenetic analyses including *D. plantaginea* and other aphid species found on fruit trees with a Bayesian approach implemented in MrBayes v3.2.7 (Huelsenbeck & Ronquist 2001) and Randomized Axelerated Maximum Likelihood-RAxML (Stamatakis 2014), using the GTR "Generalized time-reversible" mutational model. The two *M. pyrarria* individuals were used as an external group. We chose the default parameters (unlink statefreq = (all) revmat = (all) shape = (all); prset applyto = (all) ratepr = variable; mcmc ngen = 1000000 nruns = 2 nchains = 4 samplefreq = 1000 printfreq = 1000). Inferred trees were visualized with FigTree v1.4 (<http://tree.bio.ed.ac.uk/software/figtree/>).

SSR genotyping

We used 30 SSR markers, including one that was previously used for *D. plantaginea* (Guillemaud *et al.* 2011), and 29 that were newly developed from the sequencing of a low coverage genome (see details of the protocol in supplementary material Texts S2 and S3). We tested the neutrality, and the absence of linkage disequilibrium, of the 29 SSR markers using the Ewens-Watterson neutrality test ((Watterson 1978)); Text S3 and Table S4). Each SSR was amplified separately by PCR. PCR was performed in a final volume of 20 μ L (0.2 μ M of each forward and reverse primer, with the forward primer labeled with a fluorescent dye, 0.2 μ M of dNTPs, between 1 and 1.5 mM of MgCl₂, 1X Buffer (5X), 2 μ L of a homemade Taq, 5 μ L of DNA (1/30 dilution) and sterile H₂O to reach the final volume). We used the following PCR program: 94°C for 5 minutes, followed by 35 cycles of 30s at 94°C, 30s at 60 to 65°C and 45s at 72°C, then 5 minutes at 72°C and finally 10 minutes at 4°C. In the PCR program, the annealing temperature varied between 55°C and 65°C. Annealing temperatures for each SSR marker are detailed in Table S5. PCR products were then pooled according to the four multiplexes described in Table S5.

SSR genotyping was performed at the GENTYANE platform (INRAE, Clermont-Ferrand, France). Alleles of each SSR marker were identified, and their size scored with Genemapper v.4.0 (Applied Biosystems TM, Foster City, USA) by two people independently. In case of discrepancy, the electropherogram was triple checked for a final decision. Allele scoring resulting from Genemapper® was then processed with the Autobin Excel Macro (https://www6.bordeaux-aquitaine.inra.fr/biogeco_eng/Scientific-

[Production/Computer-software/Autobin](#)). We retained only multilocus genotypes with less than 30% missing data and containing less than 5% null alleles. Null alleles were detected with GENEPOP v4.7 (Rousset 2008).

Clonal population structure

Each individual was classified according to its multilocus genotype (*MLG*) with GenoDive 2.0b23 ((Meirmans & Tienderen 2004)), Table S1). We used the stepwise mutation model with a threshold of 0 and the corrected Nei's diversity index as a statistic to test clonal population structure. To reduce the influence of clonal copies produced by asexual reproduction on Hardy–Weinberg equilibrium, allelic frequency and genetic differentiation estimates, the dataset was pruned to include only one copy of each *MLG* for further analyses.

Population genetics descriptive statistics

Observed and expected heterozygosity (H_O and H_E) and inbreeding coefficient (F_{IS}) were calculated with GENEPOP v4.7 (Rousset 2008) from the SSR dataset for each SSR marker, each site (*i.e.*, geographic location/orchard) and each population (*i.e.*, clusters inferred with the STRUCTURE software, to comprise individuals with a membership coefficient of at least 62.5% to the given cluster, see results). The 62.5% cut-off was chosen based on the distribution of individual membership coefficients across the clusters detected for the most likely K value (see results). Pairwise genetic differentiation (F_{ST}) between sites and between populations was also calculated with GENEPOP (Rousset 2008). Only sites with at least five successfully genotyped samples were included for the site-specific computations. Allelic richness and private allelic richness for each site and each population were calculated with ADZE (Szpiech *et al.* 2008) using a sample size corresponding to the smallest number of observations per site or population, multiplied by two chromosomes (*e.g.*, a sample size of 20 represents ten individuals x two chromosomes).

We also estimated Nei's nucleotide diversity index π (Nei 1987), Watterson's index q (Watterson 1975), haplotype diversity, Tajima's D (Tajima 1989) and Fu's F_s (Fu 1997) with DNAsp (Rozas *et al.* 2017) using the concatenated three-marker dataset (*i.e.*, *CO1*, *TrpB* and *CytB*) for each population (*i.e.*, cluster inferred with STRUCTURE including individuals with membership coefficient > 62.5% to this cluster, see results).

Detecting recent bottlenecks during population range expansion

We tested whether a bottleneck occurred during the range expansion of each population with the method implemented in BOTTLENECK (Cornuet & Luikart 1996; Piry *et al.* 1999). Inferences regarding historical changes in population size are based on the principle that the expected heterozygosity estimated from allele frequencies decreases faster than the expected heterozygosity estimated under a given mutation model at mutation-drift equilibrium in populations that have experienced a recent reduction in size. The tests were performed under the stepwise-mutation model (SMM) and a two-phase model (TPM) allowing for 30% multi-step changes.

Spatial distribution of allelic richness and observed heterozygosity

Spatial patterns of allelic richness and observed heterozygosity were visualized by mapping the variation in allelic richness and observed heterozygosity at 48 sites in total (*i.e.*, sites with at least five individuals) with the geometry-based inverse distance weighted interpolation in QGIS (Quantum GIS, GRASS, SAGA GIS). The correlation between genetic variability (H_O) and latitude, and between H_O and longitude, was tested using a linear model.

Population subdivision

We inferred the finest population structure by comparing the results obtained with three population genetic tools: STRUCTURE v2.3.2 (Pritchard *et al.* 2000), TESS v2.3.1 (Chen *et al.* 2007), and a discriminant analysis of principal components (DAPC) (Jombart *et al.* 2010). STRUCTURE is based on the use of Markov chain Monte Carlo (MCMC) simulations to infer the assignment of genotypes to K distinct clusters. In addition to this, TESS also considers a spatial component, so that genotypes from sites that are geographically closer to each other are considered more likely to be in the same cluster. For both STRUCTURE (using admixture model with correlated allele frequencies) and TESS (using hierarchical mixture model), ten independent analyses were carried out for each value of K ($1 \leq K \leq 10$ and $2 \leq K \leq 10$,

respectively) with 500,000 MCMC iterations after a burn-in of 50,000 steps. STRUCTURE and TESS outputs were processed with CLUMPP 1.1.2 (Jakobsson & Rosenberg 2007) to identify potential distinct modes (*i.e.*, clustering solutions) in replicated runs (10) for each K . We also assessed the population subdivision with DAPC with the R package 'adegenet' (Jombart & Collins 2015), which does not rely on any assumption about the underlying population genetics model, in particular concerning Hardy-Weinberg equilibrium or linkage equilibrium. The number of genetic clusters was investigated with the *find.cluster* function (Jombart & Collins 2015; Ripley & Ripley), which runs successive K -means for clustering. The automatic cluster selection procedure 'diffNgroup' was used with *n.iter* set to 106 and *n.start* set to 103. The ordination analysis (DAPC) was performed using the *dapc* function. The statistically optimal number of principal components was assessed using the *optim.a.score* function. Assessment of the samples assigned to a genetic cluster was performed using the *compoplot* function.

We used Pophelper (Francis 2016) to run the Evanno method on the STRUCTURE outputs. The Evanno method detects the strongest level of population subdivision (Evanno *et al.* 2005). For TESS, we used the rate of change of the deviation index criterion (*DIC*) to determine the amount of additional information explained by increasing K . For DAPC, we looked at the Bayesian information criterion (*BIC*) obtained with the *adegenet* package to estimate the optimal K value. However, the K identified with the *DIC*, *BIC* and ΔK statistics does often not correspond to the finest biologically relevant population structure (Kalinowski 2011; Cornille *et al.* 2015; Puechmaille 2016). We therefore visualized the bar plots with Pophelper (Francis 2016) and chose the K value for which all clusters had well assigned individuals while no further well-delimited and biogeographically relevant clusters could be identified for higher K values. For further analyses, we considered an individual to be assigned to a cluster when its membership coefficient was $\geq 62.5\%$ to this cluster (see results below).

The spatial pattern of genetic structure was visualized by mapping the mean membership coefficients for each site, as inferred from each of the three population genetics structure analyses, with QGIS 3.12 'Las Palmas' (<https://qgis.org>). We further explored relationships among populations with a principal component analysis performed on a table of standardized alleles frequencies (PCA, *dudi.pca*, *ade4* R package (Dray & Dufour 2007)).

Isolation-by-distance

We tested whether there was a significant isolation-by-distance (IBD) pattern. A Mantel test with 10,000 random permutations was performed between the individual coefficient of relatedness F_{ij} (Loiselle *et al.* 1995) and the matrix of the natural logarithm of geographic distance. We also performed a correlation between $F_{ST}/(1-F_{ST})$ and the natural logarithm of geographic distance. These analyses were performed using SPAGeDI 1.3 (Hardy & Vekemans 2002) separately for each *D. plantaginea* panmictic population (*i.e.*, cluster containing individuals with a membership coefficient > 0.625) identified with TESS, STRUCTURE, and DAPC.

Demographic and divergence history using ABC-RF

We used ABC to investigate whether the spatial patterns of genetic clustering, diversity and differentiation observed in *D. plantaginea* resulted from the occurrence of gene flow among populations during colonization. We also attempted to infer the sequence of colonization events in each population. We used the recently developed ABC method based on a machine learning tool named "random forest" (ABC-RF) to perform model selection and parameter estimations (Pudlo *et al.* 2016; Estoup *et al.* 2018; Raynal *et al.* 2019). In brief, this method creates a "forest" of bootstrapped decision trees to classify scenarios based on the summary statistics of the datasets. Some simulations are not used to build the trees and can thus be used to cross-validate the analysis by computing a prior error rate. This approach allows the comparison of complex demographic models (Pudlo *et al.* 2016) by comparing groups of scenarios with a specific type of evolutionary event with other groups with different types of evolutionary events (instead of considering all scenarios separately) (Estoup *et al.* 2018).

We used a nested ABC approach with two key steps. First, we inferred the divergence and demographic history of the rosy apple aphid in Europe (step 1). Then, we tested the divergence and demographic history of the rosy apple aphid outside of Europe (step 2). Each ABC step compared different sequences of colonization events, with and without bidirectional gene flow among populations (Figure S2). This two-step nested approach avoids the need to compare models that are too complex, which would require the

simulation of too many populations and parameters and is more powerful than testing all scenarios individually to determine the main evolutionary events that characterize demographic history and divergence (Estoup *et al.* 2018). Populations were defined as the clusters detected with STRUCTURE (see results), removing putative admixed individuals (*i.e.*, individuals with a membership coefficient < 0.625 to any given cluster). The model parameters used were the divergence time between X and Y populations (T_{X-Y}), the effective population size of population X (N_{E-X}), the migration rate per generation between X and Y populations (m_{X-Y}). Prior values for divergence time were drawn from the log-uniform distribution bounded between the distributions used in the ABC and are given in Table S6.

For all models, identical SSR datasets were simulated for 29 out of the 30 markers that had perfect repeats (we excluded the L4 marker because it did not have perfect repeats, Tables S4 and S5), increasing confidence in the simulated model. We preliminarily checked that the population structure inferred with 29 SSR markers did not differ significantly from the inferences obtained with 30 SSR markers (data not shown). We assumed a generalized stepwise model of SSR evolution. Mutation rates were allowed to vary across loci, with locus-specific mutation rates drawn from a gamma distribution (α , α/μ) where μ is the mutation rate per generation and α is a shape parameter. We assumed a log-uniform prior distribution for μ ($1e-4$, $1e-3$) and a uniform distribution for α (1.30).

We used ABCtoolbox (Wegmann *et al.* 2010) with fastsimcoal 2.5 (Excoffier & Foll 2011) to simulate datasets, using model parameters drawn from prior distributions (Table S6). We performed 10,000 simulations per scenario how has been suggested (Pudlo *et al.* 2016). For each simulation, we calculated six summary statistics per population with arlsumstats v3.5 (Excoffier & Lischer 2010): H , the mean heterozygosity across loci, $sd(H)$, the standard deviation of the heterozygosity across loci, GW , the mean Garza-Williamson statistic across loci (Garza & Williamson 2001), $sd(GW)$, the standard deviation of the mean Garza-Williamson statistic over populations, NGW , the mean modified Garza-Williamson statistic over loci, $sd(NGW)$, the standard deviation of the mean modified Garza-Williamson statistic over populations. We also computed pairwise F_{ST} (Weir & Cockerham 1984) and genetic distances ($\delta\mu^2$ (Goldstein *et al.* 1995) between pairs of populations.

We used the abcrf v.1.7.0 R statistical package (Pudlo *et al.* 2016) to carry out the ABC-RF analysis. This analysis provides a classification vote that represents the number of times a scenario is selected as the best one among n trees in the constructed random forest. For each ABC step, we selected the scenario, or the group of scenarios, with the highest number of classification votes as the best scenario, or best group of scenarios, among a total of 500 classification trees (Breiman 2001). We then computed the posterior probabilities and prior error rates (*i.e.*, the probability of choosing a wrong group of scenarios when drawing model index and parameter values from the priors of the best scenario) over 10 replicate analyses (Estoup *et al.* 2018). We also checked visually that the simulated models were compatible with the observed dataset by projecting the simulated and the observed datasets onto the two first linear discriminant analysis (LDA) axes (Pudlo *et al.* 2016), and checking that the observed dataset fell within the clouds of simulated datasets.

We calculated parameter inferences using the final selected model following the two-step ABC procedure. Note that the ABC-RF approach includes the model checking step that was performed a posteriori in previous ABC methods.

Characterization of the bacterial community associated with the rosy apple aphid using the 16S rRNA bacterial gene

In order to investigate the bacterial diversity in *D. plantaginea* populations, we amplified a 251 bp portion of the V4 region of the 16S rRNA gene (Mizrahi-Man *et al.* 2013) and used targeted sequencing of indexed bacterial fragments on a MiSeq (Illumina) platform (Kozich *et al.* 2013) following the protocol described in (Jousselin *et al.* 2016). We used 178 aphid DNA extracts (Table S1), comprising 175 *D. plantaginea* individuals and three *M. pyrraria* individuals (Table S1). We wanted to represent a range as large as possible from our samples. We also added eight randomly chosen samples that did not undergo the two extra chemical washes (see Materials and methods, and Table S1). Each sample was amplified twice along with negative controls (DNA extraction and PCR controls). PCR replicates were conducted on distinct 96-well microplates. We obtained a total of 390 PCR products (186 DNA extracts, by 2 for PCR duplicates, plus PCR controls), which were pooled and then separated by gel electrophoresis. Bands based on the expected size of the PCR products were excised from the gel, purified with a PCR clean-up and gel

extraction kit (Macherey-Nagel), and quantified with the Kapa Library Quantification Kit (Kapa Biosystems). Paired-end sequencing of the DNA pool was carried out on a MISEQ (Illumina) FLOWCELL with a 500-cycle Reagent Kit v2 (Illumina).

We first applied sequence filtering criteria following Illumina's quality control procedure. We then used a pre-processing script from (Sow *et al.* 2019) to merge paired sequences into contigs with FLASH V.1.2.11 (Magoč & Salzberg 2011) and trim primers with CUTADAPT v.1.9.1 (Martin 2011). We then used the FROGS pipeline (Escudié *et al.* 2018) to generate an abundance table of bacterial lineages across samples. In brief, we first filtered out sequences > 261 bp and < 241 bp with FROGS, then we clustered variants into operational taxonomic units (OTUs) with SWARM (Mahé *et al.* 2014) using a maximum aggregation distance of three. We identified and removed chimeric variants with VSEARCH (Rognes *et al.* 2016). We only kept OTUs that were present in both PCR replicates of the same sample and then merged the number of reads for each OTU for each aphid sample.

Taxonomic assignment of OTUs was carried out using RDPtools and Blastn (Altschul *et al.* 1990) against the Silva138-16s database (<https://www.arb-silva.de>) as implemented in FROGS. From the abundance table of OTUs across samples, we transformed read numbers per aphid sample into frequencies (percentages); sequences accounting for < 0.5 % of all the reads for a given sample were excluded following (Jousselein *et al.* (2016). All filters resulted in excluding reads found in low abundance that could represent sequencing errors and which were also often found in the negative controls.

Results

Taxonomic status of aphid samples

The Bayesian phylogenetic tree built with the 86 sequences representing nine aphid species resulted in a polytomy for the 67 *D. plantaginea* samples from Europe, Morocco and the USA (Figure S3), showing very little sequence variation at the intraspecific level (low bootstrap values < 0.6, Figure S3a). We therefore kept only two representatives out of the 67 *D. plantaginea* individuals in subsequent phylogenetic analyses. Bayesian analysis of this pruned dataset comprising 19 individuals, representing nine aphid species, confirmed known phylogenetic relationships in Aphidinae ((Choi *et al.* 2018), Figure S3b). The species *A. pomi*, *A. citricola* and *A. spiraeicola* were grouped in the same clade, the three species appearing polyphyletic (Figure S3b). *Dysaphis plantaginea* appeared closely related to other representatives of the Macrosiphini tribe (*B. helichrysi* and *M. persicae*). Interestingly, the samples from Iran clustered apart from the *D. plantaginea* clade, the former belonging to the *Dysaphis* sp. species. This result suggests that the two *Dysaphis* sp. Iranian samples belong to a yet unidentified species or population exhibiting strong differentiation from European populations. Those two samples were not included in the population genetics analyses using SSR, as we only had two representatives from Iran (Table S1).

Clone detection

Overall, the proportion of unique genotypes was variable among sites. We found 582 unique genotypes, among which 29 were repeated (12.7% of the total dataset, Table S7) and involved 85 individuals, mainly coming from Belgium (86% of the clones, eight sites; mean proportion of unique genotypes (mean G/N) = 0.36 ± 0.2), Bulgaria (6%, one site, G/N = 0.67), France (5%, three sites, mean G/N = 0.87 ± 0.05), the USA (1 %, one site; G/N = 0.93), Spain (1%, one site; G/N = 0.91) and from the lab-reared aphids (1%, G/N = 0.09). We kept only the 582 unique genotypes for the analyses presented below.

Spatial distribution of allelic variation

The map of allelic richness (Figure 1a) showed that genetic diversity decreased along a northeast to southwest gradient, with the highest allelic richness found in northeastern Europe and the lowest in Morocco and the USA, except for Belgium that showed a lower level of genetic diversity. We found a significant correlation between allelic richness and longitude ($r = 0.229$, P -value = 0.001), as well as between allelic richness and latitude ($r = 0.268$, P -value = 0.001). The map of observed heterozygosity (Figure 1b) confirmed that genetic diversity decreased along a northeast to southwest gradient, with the highest allelic richness in Denmark and the lowest in Morocco. We found a significant correlation between observed heterozygosity and longitude ($r = 0.173$, P -value = 0.003), and between observed heterozygosity and latitude ($r = 0.499$, P -value = $1.95e-08$).

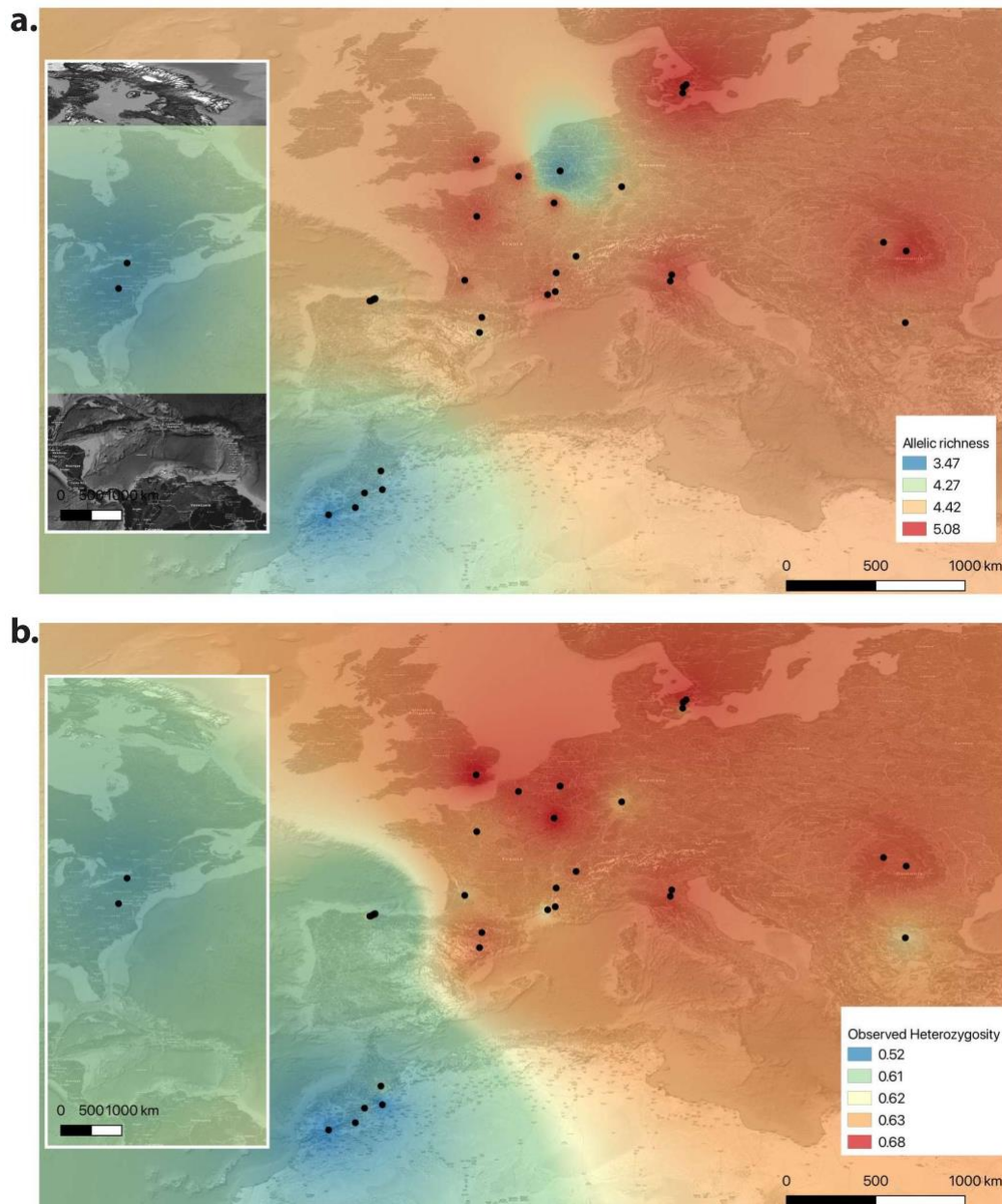


Figure 1. Spatial genetic diversity of *Dysaphis plantaginea* in Europe, Morocco and North America ($N = 582$, clonal copies were excluded, 52 sites, 30 SSR markers). a. Map of allelic richness per site. b. Map of observed heterozygosity. Sites with a sample size below five individuals are not represented on this map. Each dot is a site (*i.e.*, orchard). Red means high allelic richness, blue means low.

Population structure and subdivision

The spatial genetic structures inferred for *D. plantaginea* with TESS, DAPC and STRUCTURE, and the respective DIC , BIC and ΔK , are shown in Figure 2 and supplementary material Figures S4 to S9. For each K value, CLUMPP analyses produced highly similar clustering patterns among the 10 repetitions (average $G > 95\%$). We therefore only presented here the major modes.

With TESS, increasing K above 3 did not reveal any additional cluster (Figure S4). For $K = 3$, TESS analyses revealed a clear partition between the Moroccan samples (blue), and other samples (European and North American, orange). An additional cluster was identified comprising only one Italian individual (yellow) (Figure 2a). With DAPC, increasing K above 4 did not reveal well-delimited new clusters, *i.e.*, only individuals with multiple admixtures were assigned to the new clusters (Figure S5). For $K = 4$, DAPC identified three

well-delimited clusters (Figure 2b): one in Eastern Europe (*i.e.*, Bulgaria, Italy and Romania, in yellow), one in Morocco (blue), one in the USA (orange), plus another cluster that comprised the rest of the Western European (Spain, France, Belgium, the UK) and Danish samples (pink). With STRUCTURE, increasing K above 5 did not reveal additional clusters. For $K = 5$ (Figure 2c), samples were partitioned as follows: Morocco (blue), the USA (orange), Spain (pink), Eastern Europe and Italy (green), and Western Europe and Denmark (yellow).

We used the inferences from STRUCTURE in subsequent analyses because it revealed the finest population genetic structure. Genotypes were then assigned to a given population if their membership coefficient for that population exceeded 0.625 (Tables 1 and S1). We chose this threshold based on the bimodal distribution of cumulative coefficients inferred with STRUCTURE for $K = 5$ (Figure S10). A total of 175 admixed individuals (30% of the dataset) could not be assigned to any population and were not included in subsequent analyses. Most of the admixed individuals were located in Western and Northern Europe; the spatial distribution of the mean number of admixed individuals per site is represented in Figure S11.

We further visualized and quantified the genetic differentiation among populations with a principal component analysis (3D-PCA Figures 2d and S12) and F_{ST} estimates (Figure 2e), respectively. Among all populations, F_{ST} values were low but all significant (Figure 2e). Pairwise genetic differentiation was the lowest between the European populations ($F_{ST} = 0.02$, P -value < 0.0001, Figure 2e); the Moroccan and the USA populations were the most differentiated (Figure 2e). The PCA showed similar genetic relationships among the five populations (Figure 2d).

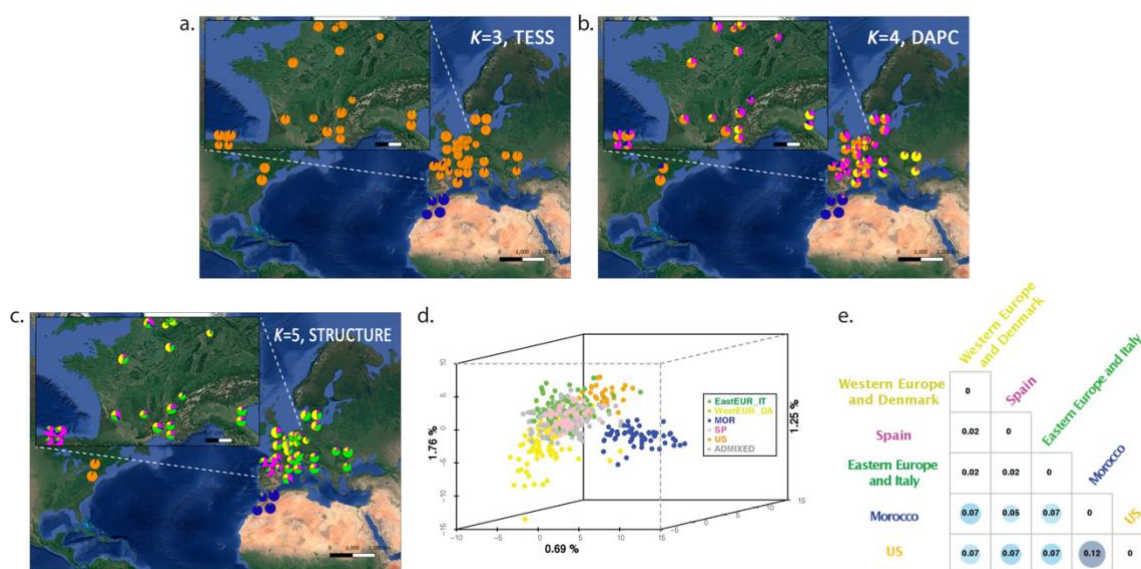


Figure 2. Spatial population structure and differentiation of the rosy apple aphid *Dysaphis plantaginea* in Europe, Morocco and North America ($N = 582$ individuals, 52 sites, 30 SSR markers). Population structure inferred with a. TESS ($K = 3$), b. Discriminant Analysis of Principal Components ($K = 4$), c. STRUCTURE ($K = 5$). Each figure includes a map with each pie chart representing the mean membership coefficients for each site. d. Principal component analysis including the 582 individuals used for running STRUCTURE analyses; each individual is colored according to its membership > 0.625 to one of the five *D. plantaginea* populations detected with STRUCTURE (individuals with a membership coefficient < 62.5% to a given cluster is referred as “admixed”). The size of each pie chart is equivalent to the number of individuals sampled at each site. e. Genetic differentiation (F_{ST}) estimates among the five populations detected with STRUCTURE. The highest F_{ST} values are highlighted by circles (Morocco and the US has the highest value). US: United States of America; MOR: Morocco; SP: Spain; EasternEU_IT: Eastern Europe and Italian population (Bulgaria, Italy, Romania); WestEUR_DA: Western Europe and Danish population (France, Germany, Belgium, United Kingdom, and Denmark).

Genetic diversity, bottleneck and range expansion

The mean expected heterozygosity was relatively high (average = 0.74 with values ranging from 0.55 to 0.75, Table S8). The mean F_{ST} across all loci was low (mean F_{ST} = 0.08, range: -0.006 - 0.5) but significant for all pairs of sites (P -value < 0.001). Allelic richness and private allelic richness were significantly different among the five populations, except between the North American and Moroccan populations for allelic richness, and among the Spanish, Moroccan and Eastern European populations for private allelic richness (Table S9). The North American and Moroccan populations showed significantly lower levels of allelic richness and private allelic diversity than the European populations (*i.e.*, Spanish, Eastern and Western European populations; Tables 1 and S9). In Europe, the Eastern European/Italian population had the highest level of allelic richness and private allelic diversity, followed by the Western European/Danish population, and lastly the Spanish population.

We also tested whether a strong and recent bottleneck occurred for each population. BOTTLENECK analyses showed no significant deviation from the mutation-drift equilibrium in any of the populations (Table S10). Tajima's D and Fu's F_s statistics did not reveal any signature of demographic range expansion either (Table 1).

Isolation-by-Distance (IBD)

A significant but weak IBD pattern was observed for the rosy apple aphid, using the 52 sampling sites ($r^2 = 0.057$, P -value ≤ 0.05), or, excluding the USA sampling sites (*i.e.*, 50 sites, $r^2 = 0.041$, P -value ≤ 0.05), or, using only the European populations (*i.e.*, 45 sites, $r^2 = 0.047$, P -value ≤ 0.05 (Figure S13). The Sp statistic can be used to quantify spatial structure and is useful for comparing populations and/or species. Low Sp values are associated with greater dispersal capacities and/or effective population sizes. Here, Sp values were extremely low (close to 0) and were only significant for the Moroccan and the Western European/Danish populations (Table 1). These results suggest that *D. plantaginea* has high dispersal capacities and/or large effective population sizes.

Inference of the divergence and demographic history of the rosy apple aphid

First, we reconstructed the divergence and demographic history of the rosy apple aphid in Europe (*i.e.*, including only the Spanish, Eastern European/Italian and Western European/Danish populations). We defined 12 scenarios assuming different divergence histories of the Eastern European/Italian, Western European/Danish and Spanish populations (Figure S2). The 12 scenarios were tested with and without gene flow among populations. We therefore ended up comparing 24 scenarios. Classification votes from the first round were the highest ten times out of ten for the group of scenarios that assumed gene flow among the three populations (295 votes out of the 500 RF trees, posterior probability $P = 0.61$, prior error rate = 3.04%, Table S12, Figure S14). Projection of the reference table datasets and the observed dataset on a single axis showed that the observed data fell within the distribution of the simulated summary statistics of the group of scenarios that assumed gene flow among the three populations, suggesting this analysis had the power to discriminate between the two groups of scenarios and to identify the most likely scenario (Figure S14). The second round of ABC inferences testing the sequence of colonization of the European populations requires caution in interpretation as prior error rates were high and posterior probabilities low (Figure S14 and Table S15).

Table 1. Summary statistics obtained for the five *Dysaphis plantaginea* populations (i.e., cluster including individuals with a membership coefficient > 62.5% to a given cluster) inferred with STRUCTURE (K = 5), based on 30 SSR markers and three concatenated genes (*CO1*, *CytB* and *TrpB*, 67 *D. plantaginea* individuals), respectively (left and the right sections of the table).

Population	Statistics inferred from SSR										Statistics inferred from concatenated genes						
	N	H _o	H _E	F _{IS}	A _R (N=28)	A _P (N=28)	Sp	Nseq	NH	HD	S	π	ϕ	Tajima's D	Fu's Fs		
Eastern European and Italian	114	0.68	0.77	0.12 ***	7.77	1.65	0.0006	34	6	0.59	6	0.0005	0.0008	-0.960	0.550		
Western European and Danish	89	0.65	0.74	0.12 ***	7.26	1.17	0.0019*	10	4	0.67	3	0.0006	0.0005	0.120	0.880		
Spanish	113	0.61	0.71	0.14 ***	6.80	0.92	0.0003*	19	5	0.71	4	0.0006	0.0006	-0.001	0.842		
Moroccan	63	0.53	0.61	0.13 ***	5.42	0.60	-0.0038*	2	2	0.67	1	0.0004	0.0003	1.630	1.280		
North American	28	0.57	0.64	0.10 ***	4.70	0.42	-	2	2	0	0	0	0	0	0		

N: number of individuals, H_o and H_E: observed and expected heterozygosity, F_{IS}: inbreeding coefficient, *** P-value < 0.0001, A_R and A_P: allelic richness and private allelic richness, respectively, corrected by the rarefaction method, estimated for a sample size of 28; Sp = spatial parameter; the number of individuals from different geographic locations is too low in the North American population to compute the Sp parameter. Distribution of haplotypes and molecular diversity based on the sequence markers *CO1*, *CytB* and *TrpB* from 67 individuals from different populations based on the genetic structure inferred with STRUCTURE. Nseq = Number of sequences; NH: number of haplotypes; HD: haplotype diversity; S= number of polymorphic sites; π = Nei's nucleotide diversity index; ϕ = Watterson's diversity index ϕ; * = significant value.

We then investigated the colonization history of the rosy apple aphid outside of Europe, *i.e.*, of the Moroccan and North American populations. Given the lack of power to discriminate between different scenarios of colonization sequence of the rosy apple aphid in Europe, and the weak genetic differentiation among the three European populations (mean $F_{ST} = 0.02$, Figure 2e), we merged the three European populations into a single European population ($N = 316$) for this analysis. We then defined six scenarios of sequence of colonization starting either from Europe or Morocco (Figure S2). We excluded the hypothesis that the rosy apple aphid originated in North America. Indeed, historical records show that the introduction of the rosy apple aphid was very recent in America (ca. 1890s) (Footitt *et al.* 2006). Furthermore, the North American population had the lowest levels of private allelic diversity and allelic richness, and the North American samples clustered with the European samples in the DAPC and TESS analyses. For each of the six scenarios, five scenarios of gene flow among populations were tested: no gene flow, gene flow among all populations and gene flow between each population pair (*i.e.*, Europe/Morocco, Europe/the USA, and Morocco/the USA). We simulated these specific models of gene flow among specific pairs of populations for the ABC-RF as we observed variable admixture levels among populations (Figure 2c). In total, 30 scenarios were compared (six colonization sequences x five gene flow modes, Figure S2). ABC-RF analyses showed relatively high support for scenarios assuming gene flow (ABC-RF round 1, 10 out of the 10 replicates for the groups of scenarios assuming gene flow, 337 votes out of the 500 RF trees, posterior probability $P = 0.65$, prior error rate = 6.55%, Table S14, Figure S15). Projection of the reference table datasets and the observed dataset on a single axis showed that the observed data fell within the distribution of the simulated summary statistics of the group assuming gene flow, suggesting the occurrence of gene flow (Figure S15). However, although the observed dataset fell within the distribution of simulated summary statistics (Figure S15), we lacked the power to infer the sequence of colonization of the rosy apple aphid outside of Europe (*i.e.*, posterior probability $P = 0.65$, and high prior error rate = 73.8%, Table S15).

Altogether, ABC-RF inferences supported the occurrence of gene flow during the colonization history of *D. plantaginea*. However, ABC-RF did not allow to determine the sequence of colonization of Europe, North America and Morocco by the rosy apple aphid.

16S rRNA amplicon sequencing

After sequence filtering using the FROGS pipeline, high-throughput sequencing of 16S rRNA bacterial genes from 186 aphids resulted in 5.7 M sequencing reads with an average of 30,800 reads per aphid sample. We found an extremely low bacterial diversity in *D. plantaginea*. The 5.7 M sequencing reads were clustered into 18 OTUs (Figure S16, Table S1). Seven OTUs were assigned to *B. aphidicola* and made up 97.8% of the sequencing reads, 92 % of the reads were assigned to a single *B. aphidicola* OTU, which was found associated with all *D. plantaginea* individuals, the remaining *B. aphidicola* OTUs were found associated with “outgroups”. The remaining reads were mainly assigned to two known aphid endosymbionts, *Serratia symbiotica* and *Regiella insecticola*, which were found in eight and three aphid specimens, respectively. The three aphids hosting *Regiella* belonged to a population of *M. pyrarria* collected in Switzerland, while aphids hosting *Serratia* were found in distantly related populations including *D. plantaginea* collected on *M. domestica* from various apple orchards in France, and *P. communis* in Iran (Table S1). These results highlight the extremely limited diversity of symbionts in the rosy apple aphid across a large geographical scale.

Discussion

We investigated the demographic history of a major fruit tree pest, the rosy apple aphid, in the regions where it impacts the most cultivated apple orchards (*i.e.*, Europe, North Africa and North America). Using multiple approaches, we showed that the colonization of Europe by the rosy apple aphid is likely recent, was not accompanied by strong bottlenecks and involved gene flow between and within populations. The high level of gene flow among populations and within populations was supported by the weak spatial genetic structure observed across Europe, and coalescent-based simulations combined with ABC-RF. We also found that *D. plantaginea* rarely hosts endosymbiotic bacteria other than their primary symbiont, *B. aphidicola* in North America and Europe. Our results provide further understanding of the evolutionary processes at play during pest range expansion.

Colonization of apple trees by the rosy apple aphid is recent, and did not involve drastic bottlenecks

After removing clonal copies from our analyses, we detected with STRUCTURE five main panmictic populations of the rosy apple aphid: three in Europe, one in Morocco and one in the USA. The genetic diversity for each population was within the same range as other aphid species such as *B. helichrysi* (Popkin *et al.* 2017), *Eriosoma lanigerum* (Zhou *et al.* 2015) and *M. persicae nicotianae* (Zepeda-Paulo *et al.* 2010). However, genetic diversity (private alleles and allelic richness) in *D. plantaginea* was higher in Europe and lower in the USA and Morocco. More generally, patterns of genetic structure and diversity suggest different demographic histories for the European, Moroccan and American populations of *D. plantaginea*.

Individuals from the European populations had partial memberships to multiple clusters, with similar membership coefficients for most individuals. This pattern of high admixture along a spatial transect might reflect a continuous gradation in allele frequencies (*i.e.*, a cline) across regions that cannot be detected by the methods used in this study. Indeed, a major limitation of all clustering approaches is the risk of inferring artefactual discrete groups in populations where genetic diversity is distributed continuously. DAPC and STRUCTURE are not immune to this bias and may erroneously identify clusters within a cline (Jombart *et al.* 2010). TESS is more sensitive to allelic gradient; this program includes a decay of the correlation between membership coefficients and distance within clusters (Chen *et al.* 2007). In the presence of clines and with evenly distributed sampling, TESS may detect fewer clusters than STRUCTURE (Durand *et al.* 2009). The larger admixed clusters found with DAPC and STRUCTURE may therefore reflect a cline of allele frequency across Europe for the rosy apple aphid. Allele frequency clines can result from admixture between genetically distinct populations (Menozzi *et al.* 1978; Currat & Excoffier 2005) and/or from subsequent founder events during range expansion (Barbujani *et al.* 1995; Fix 1997; Currat & Excoffier 2005). Genetic diversity is also expected to decrease along the expanding range (Prugnolle *et al.* 2005; François *et al.* 2008). Founder events associated with a recent range expansion may have resulted in the decreasing east-west gradient of genetic diversity and the large number of admixed individuals observed in Europe. It is therefore possible that the European populations of the rosy apple aphid underwent a recent expansion. Note that we did not detect any signature of range expansion with the three-markers dataset (*CO1*, *CytB* and *TrpB*). This lack of signature of range expansion may be due to limited number of samples used in our test (at least for the Moroccan and North American populations), but also that the range expansion is so recent that we cannot catch its footprint with our sequence markers. Several preliminary ABC-RF tests of range expansion of the rosy apple aphid in Europe that failed (*i.e.*, very low posterior probabilities and prior error rates, data not shown) suggest that the second hypothesis is possible.

The Moroccan and North American populations displayed a different pattern of genetic differentiation and diversity compared to the European populations, suggesting an even more recent colonization history. The two populations were well circumscribed and had the highest level of genetic differentiation from the European populations, the lowest genetic diversity and the lowest number of private alleles. In the TESS analysis, the North American samples did not cluster separately from the European samples, and in the DAPC analysis, samples from North America and Western Europe clustered together, suggesting that the North American population originated recently from Europe. This agrees with the earliest record of *D. plantaginea* in the Eastern US dating back to 1890 (Footitt *et al.* 2006). Since then, there have probably been multiple introductions into the USA that prevented genetic differentiation from Europe. Similar scenarios have been described for the tobacco aphid, which was introduced into America from different European gene pools (Zepeda-Paulo *et al.* 2010), and the leaf-curl plum aphid *B. helichrysi* (Piffaretti *et al.* 2013), for which population genetic tools showed very little differentiation between European and North American populations. As for the Moroccan population, we lacked the power to infer its origin with the ABC-RF method. However, the significantly lower genetic diversity and number of private alleles in this population compared with that of Europe, the high level of admixture and the close genetic relationship with the Spanish population, suggest that the Moroccan population resulted from a recent colonization event from Southern Europe. Nevertheless, the history of the rosy apple aphid in North Africa deserves further investigation requiring additional sampling in this region. Altogether, the significantly lower genetic diversity observed in the Moroccan and North American populations suggest that these originated recently through founder events. Indeed, we did not find any evidence that these two populations underwent a recent strong bottleneck despite having significantly lower diversity in both SSR and sequence markers. Thus, the founder effect underlying the colonization of North America and Morocco may involve genetic

drift in small populations rather than severe bottlenecks at the introduction event. Genetic diversity was also found to be higher in native populations within their native range in the tobacco aphid (Zepeda-Paulo *et al.* 2010) and the Russian wheat aphid (Zhou *et al.* 2015).

Altogether, a recent range expansion of the rosy apple aphid on its cultivated apple host is a plausible explanation of the observed spatial genetic structure and diversity. Rapid range expansion has also been described in the Russian wheat aphid (Zhang *et al.* 2014). Unfortunately, the ABC-RF method was not powerful enough to disentangle the different scenarios of colonization of the rosy apple aphid. However, the ABC-RF method was powerful enough to identify the occurrence of gene flow within and outside Europe. Another recent study on the main invasion routes of *D. suzukii* also reported a moderate level of confidence in model choice (*i.e.*, low posterior probabilities between 0.50 to 0.63) and high prior error rates (ranging from 0.30 to 0.40; using ABC-RF (Framout *et al.* 2017)). The absence of samples from key places during the species colonization and individuals of the species ancestral group have been discussed to impact in the resolution of the colonization history analysis using ABC approaches (Lombaert *et al.* 2014). This might account for the lack of support for some of our colonization scenarios using ABC-RF. Additional information on the mutation rates of the newly developed SSR in the present study may also improve support to some of our colonization scenarios. The mutation rate of transcribed and untranscribed SSR was indeed successfully used to reconstruct the main migration routes of *S. gregaria* to Africa using ABC-RF (Chapuis *et al.* 2020).

Colonization with gene flow, likely driven by humans

We found that the expansion of the rosy apple aphid involved several populations with high genetic diversity each, and a high extent of historical gene flow for *D. plantaginea* across Europe, North America and Morocco. Population structure analyses indicated that 30 % of the individuals was a product of recent admixture. Once recently admixed individuals removed, ABC-RF inferences strongly support scenarios with bidirectional gene flow among populations. Both population structure and coalescent-based method inferences therefore indicate the occurrence of recent and ancient gene flow among *D. plantaginea* populations. In addition, the *Sp* parameter estimates revealed large extent of historical gene flow within population. We used the *Sp* parameter estimates to compare the dispersal capacities of *D. plantaginea* with existing estimates in plants (Vekemans & Hardy 2004). The rosy apple aphid showed dispersal capacities equivalent to or even higher than that of wind-dispersed trees. The rosy apple aphid can therefore spread over long distance, as suggested previously (Guillemaud *et al.* 2011), and as frequently found in aphids (Loxdale *et al.* 1993). However, despite its high dispersal capacities and the large amount of gene flow among and within populations, we can still observe a significant (but weak) spatial genetic structure across its distribution. The observed subtle spatial genetic structure may be associated with agricultural practices. The interchange of apple materials (*i.e.*, cultivars in the form of scions and/or trees) is nowadays, and probably has been historically, frequent and a potential way of moving the rosy apple aphid in the form of overwintering eggs among regions where apple is cultivated. This hypothesis agrees with the differentiated population of *D. plantaginea* observed in Asturias (Northwestern Spain). This region is known for the main utilization of the apple for cider production and is based on local cider cultivars (Tardío *et al.* 2021). Most of our samples from Spain are from Asturias, except the Catalan samples that clustered with the European ones. The exchange of apple material within Asturias, and within other regions in Europe, may have occurred, implying higher risk of aphid movement within regions than between regions. Of course, this is not the only explanation of the spatial genetic structure observed, physical barriers (*i.e.*, Atlantic Ocean) could also explain the higher genetic differentiation of the Moroccan and North American populations.

Putative center(s) of origin of the rosy apple aphid

The geographical origin of *D. plantaginea* remains unresolved. Our phylogenetic analyses confirmed previous relationships between the rosy apple aphid and other aphids (Bašilova & Rakauskas 2012; Rebijith *et al.* 2017). However, estimates of the divergence time of *D. plantaginea* from closely related species is now required, with denser sampling of the *Dysaphis* genus across several regions in Eurasia and molecular dating analyses.

Genetic diversity estimates from SSR markers suggest that the source population came from Eastern Europe, but it may also have originated even further east in Central Asia where its fruit tree host was

originally domesticated (Harris *et al.* 2002; Cornille *et al.* 2014). Our failure to collect *D. plantaginea* samples in this area, despite our attempts in China and Kazakhstan, prevents us from testing this scenario. However, note that, while *D. plantaginea* has been recorded in Central Asia according to several faunistic surveys (Kadyrbekov 2002), it is hard to find in these regions. Furthermore, a lack of records of this species in the Global Biodiversity Information Facility (GBIF 2020) suggests *D. plantaginea* is uncommon in this area.

Alternatively, *D. plantaginea* may have originated in the Caucasus or Asia Minor, maybe through a host jump from *Pyrus* to *Malus*. *Dysaphis plantaginea*, *D. radicola*, *D. devecta*, *D. brancoi*, *D. anthrisci*, *D. chaerophylli* are *Dysaphis* species reported to feed on the cultivated apple, *M. domestica*, as their primary host (Blommers *et al.* 2004; Stekolshchikov 2006), but many aphid species also feed on pears, including, *D. reaumuri* Mordvilko and *D. pyri* Boyer de Fonscolombe (Barbagallo *et al.* 2007). The *Pyrus* genus is known to have diverged a long time ago from the genus *Malus* probably in the Caucasus (Celton *et al.* 2009; Xiang *et al.* 2017). Therefore, the ancestral group from which *D. plantaginea* diverged might have had a *Pyrus* species as host. Analysis of samples from these regions is required to test this hypothesis.

Low endosymbiont bacterial diversity associated with *D. plantaginea*

Our results showed that bacterial diversity was strikingly low in *D. plantaginea* across Europe and North America. As expected, *B. aphidicola* was the predominant bacterial species (97% of our reads). We also distinguished different variants of *B. aphidicola* in the Iranian *D. plantaginea* samples which fits with the genetic differentiation observed in the corresponding aphid hosts. At least nine secondary endosymbionts have been reported among aphid species (reviewed in Zytynska & Weisser 2016), including *Arsenophonus Gherma*, *Hamiltonella defensa* Moran, *Regiella insecticola*, *Rickettsia* Da Rocha-Lima, *Rickettsiella Drobne*, *Serratia symbiotica*, *Spiroplasma Saglio* and *Wolbachia Hertig & Wolbach*, and *Fukatsuia symbiotica*. These bacteria have been reported to be aphid facultative symbiont, potential pathogens, or plant-associated microbiota (Gauthier *et al.* 2015). Here, we detected the presence of secondary symbionts only in a few samples. The *Serratia* bacteria was the only secondary symbiont identified and it was found in only eight samples of *D. plantaginea*, collected on *Pyrus communis* in Iran, France and Spain on *M. domestica*. *Regiella* symbiont was found in three samples from another aphid species, *M. pyrararia* collected on *M. domestica*. At least seven endosymbionts (*H. defensa*, *R. insecticola*, *Rickettsia* sp., *Rickettsiella* sp., *S. symbiotica*, *Spiroplasma* sp. and *Wolbachia* sp.) have been reported across a narrower spatial distribution in the model species *Acyrtosiphon pisum* and several other well-studied aphid species (Zytynska & Weisser 2016). By contrast, another study (Henry *et al.* 2015) found that neither *D. plantaginea* nor other *Dysaphis* species hosted any secondary symbionts, although it relied on a small number of individuals. This low endosymbiont bacterial diversity in *D. plantaginea* shows that its likely fast expansion is not the result of an association with different mutualistic endosymbionts.

Concluding remarks

This study has demonstrated that the colonization of a major fruit tree aphid pest occurred without a strong bottleneck, maintaining high genetic diversity, and generated differentiated populations exchanging gene flow, with an isolation-by-distance pattern. The lack of demographic changes in the populations of *D. plantaginea* in Europe, except for the Belgian populations, indicates that seasonal selective pressures, such as insecticide application, have little impact on the genetic diversity of the species. These results may have implications in control and management of *D. plantaginea*, but further studies are needed to fully understand how selective pressures have impacted *D. plantaginea* adaptation. In addition, the use of other genetic markers, such as SNPs, promises to make great strides to elucidate the demographic history of the rosy apple aphid. Finally, the origin of the rosy apple aphid is still unknown. Our results suggest it may have originated in Eastern Europe, the Caucasus or Asia Minor. However, the domestication of the rosy apple aphid primary host (the cultivated apple) in this region remains unknown (Cornille *et al.* 2014, 2019; Spengler 2019). Further investigations on the history of apple domestication, additional sampling of *D. plantaginea* in the Caucasus or Asia Minor, and sampling related aphid species are required to better understand the origin of this major fruit tree pest.

Acknowledgements

We thank the Plateforme de Génotypage GENTYANE INRAE UMR 1095 for assistance in genotyping, and especially the platform leader Charles Poncet. We thank the informatics team at the GQE-Le Moulon, in particular Adrien Falce, Benoit Johannet and Olivier Langella. We are grateful to the Migale bioinformatics Facility (MIGALE, INRAE, 2020, doi: 10.15454/1.5572390655343293E12) for providing help and/or computing and/or storage resources. A previous version of this article has been peer-reviewed and recommended by PCI Evolutionary Biology (<https://doi.org/10.24072/pci.evolbiol.100134>).

Authors' contributions. AC, EJ, PD, LJ conceived and designed the experiments; AC, EJ, PD, LJ, TG, MH obtained funding; AC, AR, AA, TB, GA, FP, AH, SKJ, RA, SS, LS, EG, LT, FG, KM, YK, ARom, TD, IZ, OS, RJM, AA, BEH, EJ, HZ, IB, MR, HT, CM, BB, AD sampled the material; AR, CR, AV, OG, AC, MA, LM, ML, LB, SGOV performed the molecular work; SGOV, AC, OG, MG, LB, EJ, GD analyzed the data. All co-authors discussed the results. The manuscript was written by SGOV, AC, EJ, OG with critical inputs from other co-authors.

Funding

This research was funded by the laboratoire d'Excellence Biodiversity Agrosystem Society and Climate BASC (grant « Emergence POMPUCEDOM ») and Systematic Research funding, ATIP-Avenir program and the Institut Diversité Ecologie et Evolution du Vivant (IDEEV). AR and TU were supported by a grant of the Romanian Ministry of Education and Research, CCCDI - UEFISCDI, project number 384 PED-PN-III-P2-2.1-PED-2019-4924.

Conflict of interest disclosure

The authors declare that they have no financial conflict of interest with the content of this article. Tatiana Giraud is a member of the managing board of PCI Evolutionary Biology. Tatiana Giraud, Amandine Cornille, Emmanuelle Jousselein, and Jean-Christophe Simon are PCI Evolutionary Ecology Biology recommenders.

Data, script and code availability

Data are available online: <https://doi.org/10.5281/zenodo.4537710>

Supplementary information

<https://doi.org/10.5281/zenodo.4537710>

References

- Aketarawong N, Guglielmino CR, Karam N, Falchetto M, Manni M, Scolari F, Gomulski LM, Gasperi G, Malacrida AR (2014) The oriental fruitfly *Bactrocera dorsalis* ss in East Asia: disentangling the different forces promoting the invasion and shaping the genetic make-up of populations. *Genetica*, **142**, 201–213. <https://doi.org/10.1007/s10709-014-9767-4>
- Altschul SF, Gish W, Miller W, Myers EW, Lipman DJ (1990) Basic local alignment search tool. *Journal of molecular biology*, **215**, 403–410. [https://doi.org/10.1016/S0022-2836\(05\)80360-2](https://doi.org/10.1016/S0022-2836(05)80360-2)
- Angert AL, Bontrager MG, Ågren J (2020) What Do We Really Know About Adaptation at Range Edges? *Annual Review of Ecology, Evolution, and Systematics*, **51**, 341–361. <https://doi.org/10.1146/annurev-ecolsys-012120-091002>
- Aslan B, Karaca İ (2005) Fruit tree aphids and their natural enemies in Isparta region, Turkey. *Journal of pest science*, **78**, 227–229. <https://doi.org/10.1007/s10340-005-0097-2>

- Austerlitz F, Jung-Muller B, Godelle B, Gouyon P-H (1997) Evolution of coalescence times, genetic diversity and structure during colonization. *Theoretical Population Biology*, **51**, 148–164. <https://doi.org/10.1006/tpbi.1997.1302>
- Barbagallo S, Cocuzza G, Cravedi P, Komazaki S (2007) 29 IPM Case Studies: Deciduous Fruit Trees. *Aphids as crop pests*, 651. <https://doi.org/10.1079/9781780647098.0632>
- Barbujani G, Sokal RR, Oden NL (1995) Indo-European origins: A computer-simulation test of five hypotheses. *American Journal of Physical Anthropology*, **96**, 109–132. <https://doi.org/10.1002/ajpa.1330960202>
- Bašilova J, Rakauskas R (2012) Phylogenetic relationships of *Dysaphis pyri* (BOYER DE FONSCOLOMBE) and *Dysaphis reaumuri* (MORDVILKO)(Hemiptera, Sternorrhyncha: Aphididae): COI and EF-1 α evidence. *Organisms diversity & evolution*, **12**, 197–204. <https://doi.org/10.1007/s13127-012-0095-1>
- Bertorelle G, Benazzo A, Mona S (2010) ABC as a flexible framework to estimate demography over space and time: some cons, many pros. *Molecular ecology*, **19**, 2609–2625. <https://doi.org/10.1111/j.1365-294X.2010.04690.x>
- Blackman RL, Eastop VF (2000) *Aphids on the world's crops: an identification and information guide*. John Wiley & Sons Ltd.
- Blakeslee AMH, Haram LE, Altman I, Kennedy K, Ruiz GM, Miller AW (2020) Founder effects and species introductions: A host versus parasite perspective. *Evolutionary Applications*, **13**, 559–574. <https://doi.org/10.1111/eva.12868>
- Blommers LHM, Helsen HHM, Vaal F (2004) Life history data of the rosy apple aphid *Dysaphis plantaginea* (Pass.)(Homopt., Aphididae) on plantain and as migrant to apple. *Journal of Pest Science*, **77**, 155–163. <https://doi.org/10.1007/s10340-004-0046-5>
- Bloomquist EW, Lemey P, Suchard MA (2010) Three roads diverged? Routes to phylogeographic inference. *Trends in Ecology & Evolution*, **25**, 626–632. <https://doi.org/10.1016/j.tree.2010.08.010>
- Bonnemaison L (1959) Le puceron cendré du pommier (*Dysaphis plantaginea* Pass.) Morphologie et biologie–Méthodes de lutte. *Annales de l'Institut National de la Recherche Agronomique, Série C, Epiphyties*, **3**, 257–322.
- Brady CM, Asplen MK, Desneux N, Heimpel GE, Hopper KR, Linnen CR, Oliver KM, Wulff JA, White JA (2014) Worldwide populations of the aphid *Aphis craccivora* are infected with diverse facultative bacterial symbionts. *Microbial ecology*, **67**, 195–204. <https://doi.org/10.1007/s00248-013-0314-0>
- Breiman L (2001) Random Forests. *Machine Learning*, **45**, 5–32. <https://doi.org/10.1023/A:1010933404324>
- Buchner P (1965) *Endosymbiosis of animals with plant microorganisms*. Interscience Publishers, New York.
- CAB International (2020) *Dysaphis plantaginea*. [Distribution map]. <https://doi.org/10.1079/DMPP20056600429>
- Celton J-M, Chagné D, Tustin SD, Terakami S, Nishitani C, Yamamoto T, Gardiner SE (2009) Update on comparative genome mapping between *Malus* and *Pyrus*. *BMC research notes*, **2**, 182. <https://doi.org/10.1186/1756-0500-2-182>
- Chapuis M-P, Raynal L, Plantamp C, Meynard CN, Blondin L, Marin J-M, Estoup A (2020) A young age of subspecific divergence in the desert locust inferred by ABC random forest. *Molecular Ecology*, **29**, 4542–4558. <https://doi.org/10.1111/mec.15663>
- Chen C, Durand E, Forbes F, François O (2007) Bayesian clustering algorithms ascertaining spatial population structure: a new computer program and a comparison study. *Molecular Ecology Notes*, **7**, 747–756. <https://doi.org/10.1111/j.1471-8286.2007.01769.x>
- Choi H, Shin S, Jung S, Clarke DJ, Lee S (2018) Molecular phylogeny of Macrosiphini (Hemiptera: Aphididae): An evolutionary hypothesis for the Pterocomma-group habitat adaptation. *Molecular Phylogenetics and Evolution*, **121**, 12–22. <https://doi.org/10.1016/j.ympev.2017.12.021>
- Cornille A, Antolín F, Garcia E, Vernesi C, Fietta A, Brinkkemper O, Kirleis W, Schlumbaum A, Roldán-Ruiz I (2019) A Multifaceted Overview of Apple Tree Domestication. *Trends in Plant Science*, **24**, 770–782. <https://doi.org/10.1016/j.tplants.2019.05.007>
- Cornille A, Feurtey A, Gélín U, Ropars J, Misvanderbrugge K, Gladieux P, Giraud T (2015) Anthropogenic and natural drivers of gene flow in a temperate wild fruit tree: a basis for conservation and breeding programs in apples. *Evolutionary Applications*, **8**, 373–384. <https://doi.org/10.1111/eva.12250>

- Cornille A, Giraud T, Smulders MJ, Roldán-Ruiz I, Gladieux P (2014) The domestication and evolutionary ecology of apples. *Trends in Genetics*, **30**, 57–65. <https://doi.org/doi:10.1016/j.tig.2013.10.002>
- Cornuet JM, Luikart G (1996) Description and power analysis of two tests for detecting recent population bottlenecks from allele frequency data. *Genetics*, **144**, 2001–2014. <https://doi.org/10.1093/genetics/144.4.2001>
- Csilléry K, Blum MG, Gaggiotti OE, François O (2010) Approximate Bayesian computation (ABC) in practice. *Trends in ecology & evolution*, **25**, 410–418. <https://doi.org/10.1016/j.tree.2010.04.001>
- Csilléry K, François O, Blum MGB (2012) abc: an R package for approximate Bayesian computation (ABC). *Methods in Ecology and Evolution*, **3**, 475–479. <https://doi.org/10.1111/j.2041-210X.2011.00179.x>
- Curat M, Excoffier L (2005) The effect of the Neolithic expansion on European molecular diversity. *Proceedings of the Royal Society B: Biological Sciences*, **272**, 679–688. <https://doi.org/10.1098/rspb.2004.2999>
- Dray S, Dufour A-B (2007) The ade4 package: implementing the duality diagram for ecologists. *Journal of statistical software*, **22**, 1–20. <https://doi.org/10.18637/jss.v022.i04>
- Durand E, Chen C, François O (2009) Tess version 2.3—reference manual, August 2009. Available at: memberstimg.imag.fr/Olivier.Francois/tess.html, **1**, 30.
- Egea R, Casillas S, Barbadilla A (2008) Standard and generalized McDonald-Kreitman test: a website to detect selection by comparing different classes of DNA sites. *Nucleic Acids Research*, **36**, W157–W162. <https://doi.org/10.1093/nar/gkn337>
- Escudé F, Auer L, Bernard M, Mariadassou M, Cauquil L, Vidal K, Maman S, Hernandez-Raquet G, Combes S, Pascal G (2018) FROGS: Find, Rapidly, OTUs with Galaxy Solution. *Bioinformatics*, **34**, 1287–1294. <https://doi.org/10.1093/bioinformatics/btx791>
- Estoup A, Guillemaud T (2010) Reconstructing routes of invasion using genetic data: why, how and so what? *Molecular Ecology*, **19**, 4113–4130. <https://doi.org/10.1111/j.1365-294X.2010.04773.x>
- Estoup A, Raynal L, Verdu P, Marin J-M (2018) Model choice using Approximate Bayesian Computation and Random Forests: analyses based on model grouping to make inferences about the genetic history of Pygmy human populations. *Journal de la Société Française de Statistique*, **159**, 167–190.
- Evanno G, Regnaut S, Goudet J (2005) Detecting the number of clusters of individuals using the software structure: a simulation study. *Molecular Ecology*, **14**, 2611–2620. <https://doi.org/10.1111/j.1365-294X.2005.02553.x>
- Excoffier L, Foll M (2011) fastsimcoal: a continuous-time coalescent simulator of genomic diversity under arbitrarily complex evolutionary scenarios. *Bioinformatics*, **27**, 1332–1334. <https://doi.org/10.1093/bioinformatics/btr124>
- Excoffier L, Foll M, Petit RJ (2009) Genetic Consequences of Range Expansions. *Annual Review of Ecology, Evolution, and Systematics*, **40**, 481–501. <https://doi.org/10.1146/annurev.ecolsys.39.110707.173414>
- Excoffier L, Lischer HEL (2010) Arlequin suite ver 3.5: a new series of programs to perform population genetics analyses under Linux and Windows. *Molecular Ecology Resources*, **10**, 564–567. <https://doi.org/10.1111/j.1755-0998.2010.02847.x>
- Fang F, Chen J, Jiang L, Qu Y, Qiao G (2018) Genetic origin and dispersal of the invasive soybean aphid inferred from population genetic analysis and approximate Bayesian computation. *Integrative Zoology*, **13**, 536–552. <https://doi.org/10.1111/1749-4877.12307>
- Figuerola CC, Fuentes-Contreras E, Molina-Montenegro MA, Ramírez CC (2018) Biological and genetic features of introduced aphid populations in agroecosystems. *Current Opinion in Insect Science*, **26**, 63–68. <https://doi.org/10.1016/j.cois.2018.01.004>
- Fix AG (1997) Gene Frequency Clines Produced by Kin-Structured Founder Effects. *Human Biology*, **69**, 663–673. <https://www.jstor.org/stable/41465590>
- Fontaine MC, Labbé F, Dussert Y, Delière L, Richart-Cervera S, Giraud T, Delmotte F (2021) Europe as a bridgehead in the worldwide invasion history of grapevine downy mildew, *Plasmopara viticola*. *Current Biology*. <https://doi.org/10.1016/j.cub.2021.03.009>
- Footitt RG, Halbert SE, Miller GL, Maw E, Russell LM (2006) Adventive aphids (Hemiptera: Aphididae) of America north of Mexico. *Proceedings of the Entomological Society of Washington*, **108**, 583–610 <https://handle.nal.usda.gov/10113/8716>

- Frago E, Mala M, Weldegergis BT, Yang C, McLean A, Godfray HCJ, Gols R, Dicke M (2017) Symbionts protect aphids from parasitic wasps by attenuating herbivore-induced plant volatiles. *Nature Communications*, **8**, 1860. <https://doi.org/10.1038/s41467-017-01935-0>
- Frago E, Zytynska SE, Fatouros NE (2020) Microbial symbionts of herbivorous species across the insect tree. *Mechanisms Underlying Microbial Symbiosis*, 111–159. <https://doi.org/10.1016/bs.aipp.2020.04.002>
- Fraimout A, Debat V, Fellous S, Hufbauer RA, Foucaud J, Pudlo P, Marin J-M, Price DK, Cattel J, Chen X, Deprá M, François Duyck P, Guedot C, Kenis M, Kimura MT, Loeb G, Loiseau A, Martinez-Sañudo I, Pascual M, Polihronakis Richmond M, Shearer P, Singh N, Tamura K, Xuéreb A, Zhang J, Estoup A (2017) Deciphering the Routes of invasion of *Drosophila suzukii* by Means of ABC Random Forest. *Molecular Biology and Evolution*, **34**, 980–996. <https://doi.org/10.1093/molbev/msx050>
- Francis R (2016) POPHELPER: An R package and web app to analyse and visualise population structure. *Molecular Ecology Resources*, **17**, n/a-n/a. <https://doi.org/10.1111/1755-0998.12509>
- François O, Blum MGB, Jakobsson M, Rosenberg NA (2008) Demographic History of European Populations of *Arabidopsis thaliana*. *PLOS Genetics*, **4**, e1000075. <https://doi.org/10.1371/journal.pgen.1000075>
- Fu Y-X (1997) Statistical Tests of Neutrality of Mutations Against Population Growth, Hitchhiking and Background Selection. *Genetics*, **147**, 915.
- Garnas JR, Auger-Rozenberg M-A, Roques A, Bertelsmeier C, Wingfield MJ, Saccaggi DL, Roy HE, Slippers B (2016) Complex patterns of global spread in invasive insects: eco-evolutionary and management consequences. *Biological Invasions*, **18**, 935–952. <https://doi.org/10.1007/s10530-016-1082-9>
- Garza JC, Williamson EG (2001) Detection of reduction in population size using data from microsatellite loci. *Molecular Ecology*, **10**, 305–318. <https://doi.org/10.1046/j.1365-294X.2001.01190.x>
- Gauthier J-P, Outreman Y, Mieuze L, Simon J-C (2015) Bacterial Communities Associated with Host-Adapted Populations of Pea Aphids Revealed by Deep Sequencing of 16S Ribosomal DNA. *PLOS ONE*, **10**, e0120664. <https://doi.org/10.1371/journal.pone.0120664>
- GBIF (2020) *Dysaphis plantaginea* (Passerini, 1860) in GBIF Secretariat (2021). GBIF Backbone Taxonomy. Checklist dataset <https://doi.org/10.15468/39omei> accessed via GBIF.org on 2021-10-29.
- Giordano R, Donthu RK, Zimin AV, Julca Chavez IC, Gabaldon T, van Munster M, Hon L, Hall R, Badger JH, Nguyen M, Flores A, Potter B, Giray T, Soto-Adames FN, Weber E, Marcelino JAP, Fields CJ, Voegtlin DJ, Hill CB, Hartman GL, Akraiko T, Aschwanden A, Avalos A, Band M, Bonning B, Bretaudeau A, Chiesa O, Chirumamilla A, Coates BS, Cocuzza G, Cullen E, Desborough P, Diers B, DiFonzo C, Heimpel GE, Herman T, Huang Y, Knodel J, Ko C-C, Labrie G, Lagos-Kutz D, Lee J-H, Lee S, Legeai F, Mandrioli M, Manicardi GC, Mazzoni E, Melchiori G, Micijevic A, Miller N, Nasuddin A, Nault BA, O'Neal ME, Panini M, Pessino M, Prischmann-Voldseth D, Robertson HM, Sijun Liu, Song H, Tilmon K, Tooker J, Wu K, Zhan S (2020) Soybean aphid biotype 1 genome: Insights into the invasive biology and adaptive evolution of a major agricultural pest. *Insect Biochemistry and Molecular Biology*, **120**, 103334. <https://doi.org/10.1016/j.ibmb.2020.103334>
- Gladieux P, Feurtey A, Hood ME, Snirc A, Clavel J, Dutech C, Roy M, Giraud T (2015) The population biology of fungal invasions. *Molecular Ecology*, **24**, 1969–1986. <https://doi.org/10.1111/mec.13028>
- Gladieux P, Ropars J, Badouin H, Branca A, Aguilera G, De Vienne DM, Rodríguez de la Vega RC, Branco S, Giraud T (2014) Fungal evolutionary genomics provides insight into the mechanisms of adaptive divergence in eukaryotes. *Molecular ecology*, **23**, 753–773. <https://doi.org/10.1111/mec.12631>
- Goldstein DB, Ruiz Linares A, Cavalli-Sforza LL, Feldman MW (1995) An evaluation of genetic distances for use with microsatellite loci. *Genetics*, **139**, 463.
- Guillemaud T, Blin A, Simon S, Morel K, Franck P (2011) Weak Spatial and Temporal Population Genetic Structure in the Rosy Apple Aphid, *Dysaphis plantaginea*, in French Apple Orchards. *PLOS ONE*, **6**, e21263. <https://doi.org/10.1371/journal.pone.0021263>
- Hardy OJ, Vekemans X (2002) spagedi: a versatile computer program to analyse spatial genetic structure at the individual or population levels. *Molecular Ecology Notes*, **2**, 618–620. <https://doi.org/10.1046/j.1471-8286.2002.00305.x>
- Harris SA, Robinson JP, Juniper BE (2002) Genetic clues to the origin of the apple. *TRENDS in Genetics*, **18**, 426–430. [https://doi.org/10.1016/S0168-9525\(02\)02689-6](https://doi.org/10.1016/S0168-9525(02)02689-6)
- Haynes S, Darby AC, Daniell TJ, Webster G, van Veen FJF, Godfray HCJ, Prosser JI, Douglas AE (2003) Diversity of Bacteria Associated with Natural Aphid Populations. *Applied and Environmental Microbiology*, **69**, 7216–7223. <https://doi.org/10.1128/AEM.69.12.7216-7223.2003>

- Henry LM, Maiden MCJ, Ferrari J, Godfray HCJ (2015) Insect life history and the evolution of bacterial mutualism. *Ecology Letters*, **18**, 516–525. <https://doi.org/10.1111/ele.12425>
- Hickerson MJ, Carstens BC, Cavender-Bares J, Crandall KA, Graham CH, Johnson JB, Rissler L, Victoriano PF, Yoder AD (2010) Phylogeography's past, present, and future: 10 years after. *Molecular phylogenetics and evolution*, **54**, 291–301. <https://doi.org/10.1016/j.ympev.2009.09.016>
- Hoffmann BD, Courchamp F (2016) Biological invasions and natural colonisations: are they that different? *NeoBiota*, **29**, 1–14. <https://doi.org/10.3897/neobiota.29.6959>
- Holman J (2009) *Host plant catalog of aphids*. Springer. <https://doi.org/10.1007/978-1-4020-8286-3>
- Huelsenbeck JP, Ronquist F (2001) MRBAYES: Bayesian inference of phylogenetic trees. *Bioinformatics*, **17**, 754–755. <https://doi.org/10.1093/bioinformatics/17.8.754>
- Jakobsson M, Rosenberg NA (2007) CLUMPP: a cluster matching and permutation program for dealing with label switching and multimodality in analysis of population structure. *Bioinformatics*, **23**, 1801–1806. <https://doi.org/10.1093/bioinformatics/btm233>
- Jombart T, Collins C (2015) A tutorial for discriminant analysis of principal components (DAPC) using adegenet 2.0.0. *London: Imperial College London, MRC Centre for Outbreak Analysis and Modelling*.
- Jombart T, Devillard S, Balloux F (2010) Discriminant analysis of principal components: a new method for the analysis of genetically structured populations. *BMC Genetics*, **11**, 94. <https://doi.org/10.1186/1471-2156-11-94>
- Jousselin E, Clamens A-L, Galan M, Bernard M, Maman S, Gschloessl B, Duport G, Meseguer AS, Clevro F, Coeur d'acier A (2016) Assessment of a 16S rRNA amplicon Illumina sequencing procedure for studying the microbiome of a symbiont-rich aphid genus. *Molecular Ecology Resources*, **16**, 628–640. <https://doi.org/10.1111/1755-0998.12478>
- Jousselin E, Desdevises Y, Coeur d'acier A (2009) Fine-scale cospeciation between *Brachycaudus* and *Buchnera aphidicola*: bacterial genome helps define species and evolutionary relationships in aphids. *Proceedings of the Royal Society B: Biological Sciences*, **276**, 187–196. <https://doi.org/10.1098/rspb.2008.0679>
- Kadyrbekov R (2002) About the aphid fauna (Homoptera Aphididae) of West Tien-Shan (Kazakhstan part). *Tethys Entomological Research*, **4**, 65–76.
- Kalinowski ST (2011) The computer program STRUCTURE does not reliably identify the main genetic clusters within species: simulations and implications for human population structure. *Heredity*, **106**, 625–632. <https://doi.org/10.1038/hdy.2010.95>
- Kim H, Hoelmer K, Lee S (2016) Population genetics of the soybean aphid in North America and East Asia: test for introduction between native and introduced populations. *Biological Invasions*, **19**. <https://doi.org/10.1007/s10530-016-1299-7>
- Kirk H, Dorn S, Mazzi D (2013) Molecular genetics and genomics generate new insights into invertebrate pest invasions. *Evolutionary Applications*, **6**, 842–856. <https://doi.org/10.1111/eva.12071>
- Kozich JJ, Westcott SL, Baxter NT, Highlander SK, Schloss PD (2013) Development of a Dual-Index Sequencing Strategy and Curation Pipeline for Analyzing Amplicon Sequence Data on the MiSeq Illumina Sequencing Platform. *Applied and Environmental Microbiology*, **79**, 5112–5120. <https://doi.org/10.1128/AEM.01043-13>
- Kumar S, Stecher G, Tamura K (2016) MEGA7: Molecular Evolutionary Genetics Analysis Version 7.0 for Bigger Datasets. *Molecular Biology and Evolution*, **33**, 1870–1874. <https://doi.org/10.1093/molbev/msw054>
- Lawson Handley L-J, Estoup A, Evans DM, Thomas CE, Lombaert E, Facon B, Aebi A, Roy HE (2011) Ecological genetics of invasive alien species. *BioControl*, **56**, 409–428. <https://doi.org/10.1007/s10526-011-9386-2>
- Leclair M, Buchard C, Mahéo F, Simon J-C, Outreman Y (2021) A Link Between Communities of Protective Endosymbionts and Parasitoids of the Pea Aphid Revealed in Unmanipulated Agricultural Systems. *Frontiers in Ecology and Evolution*, **9**. <https://doi.org/10.3389/fevo.2021.618331>
- Leclair M, Pons I, Mahéo F, Morlière S, Simon J-C, Outreman Y (2016) Diversity in symbiont consortia in the pea aphid complex is associated with large phenotypic variation in the insect host. *Evolutionary Ecology*, **30**, 925–941. <https://doi.org/10.1007/s10682-016-9856-1>
- Lenhart PA, White JA (2020) Endosymbionts facilitate rapid evolution in a polyphagous herbivore. *Journal of Evolutionary Biology*, **33**, 1507–1511. <https://doi.org/10.1111/jeb.13697>

- Loiselle B, Sork V, Nason J, Graham C (1995) Loiselle BA, Sork VL, Nason J, Graham C.. Spatial genetic structure of a tropical understory shrub, *Psychotria officinalis* (Rubiaceae). *Am J Bot* 82: 1420-1425. *American Journal of Botany*, **82**, 1420–1425. <https://doi.org/10.2307/2445869>
- Lombaert E, Guillemaud T, Lundgren J, Koch R, Facon B, Grez A, Loomans A, Malausa T, Nedved O, Rhule E (2014) Complementarity of statistical treatments to reconstruct worldwide routes of invasion: the case of the Asian ladybird *Harmonia axyridis*. *Molecular ecology*, **23**, 5979–5997. <https://doi.org/10.1111/mec.12989>
- Loxdale HD, Hardie JIM, Halbert S, Footitt R, Kidd NA, Carter CI (1993) The relative importance of short- and long-range movement of flying aphids. *Biological Reviews*, **68**, 291–311. <https://doi.org/10.1111/j.1469-185X.1993.tb00998.x>
- Magoč T, Salzberg SL (2011) FLASH: fast length adjustment of short reads to improve genome assemblies. *Bioinformatics*, **27**, 2957–2963. <https://doi.org/10.1093/bioinformatics/btr507>
- Mahé F, Rognes T, Quince C, Vargas C de, Dunthorn M (2014) Swarm: robust and fast clustering method for amplicon-based studies. *PeerJ*, **2**, e593. <https://doi.org/10.7717/peerj.593>
- Martin M (2011) Cutadapt removes adapter sequences from high-throughput sequencing reads. *EMBnet journal*, **17**, 10–12. <https://doi.org/10.14806/ej.17.1.200>
- McDonald JH, Kreitman M (1991) Adaptive protein evolution at the Adh locus in *Drosophila*. *Nature*, **351**, 652–654. <https://doi.org/10.1038/351652a0>
- Meirmans PG, Tienderen PHV (2004) genotype and genodive: two programs for the analysis of genetic diversity of asexual organisms. *Molecular Ecology Notes*, **4**, 792–794. <https://doi.org/10.1111/j.1471-8286.2004.00770.x>
- Menozi P, Piazza A, Cavalli-Sforza L (1978) Synthetic maps of human gene frequencies in Europeans. *Science*, **201**, 786–792. <https://doi.org/10.1126/science.356262>
- Mizrahi-Man O, Davenport ER, Gilad Y (2013) Taxonomic Classification of Bacterial 16S rRNA Genes Using Short Sequencing Reads: Evaluation of Effective Study Designs. *PLOS ONE*, **8**, e53608. <https://doi.org/10.1371/journal.pone.0053608>
- Morales-Hojas R, Sun J, Iraizoz FA, Tan X, Chen J (2020) Contrasting population structure and demographic history of cereal aphids in different environmental and agricultural landscapes. *Ecology and Evolution*, **10**, 9647–9662. <https://doi.org/10.1002/ece3.6565>
- Nei M (1987) *Molecular Evolutionary Genetics*. Columbia University Press.
- Oliver K, Degnan P, Burke G, Moran N (2009) Oliver KM, Degnan PH, Burke GR, Moran NA. Facultative symbionts in aphids and the horizontal transfer of ecologically important traits. *Annu Rev Entomol* 55: 247-266. *Annual review of entomology*, **55**, 247–66. <https://doi.org/10.1146/annurev-ento-112408-085305>
- Peccoud J, Figueroa CC, Silva AX, Ramirez CC, Mieuze L, Bonhomme J, Stoeckel S, Plantegenest M, Simon J-C (2008) Host range expansion of an introduced insect pest through multiple colonizations of specialized clones. *Molecular Ecology*, **17**, 4608–4618. <https://doi.org/10.1111/j.1365-294X.2008.03949.x>
- Piffaretti J, Clamens A-L, Vanlerberghe-masutti F, Gupta RK, Call E, Halbert S, Jouselin E (2013) Regular or covert sex defines two lineages and worldwide superclones within the leaf-curl plum aphid (*Brachycaudus helichrysi*, Kaltenbach). *Molecular Ecology*, **22**, 3916–3932. <https://doi.org/10.1111/mec.12371>
- Piry S, Luikart G, Cornuet J-M (1999) Computer note. BOTTLENECK: a computer program for detecting recent reductions in the effective size using allele frequency data. *Journal of Heredity*, **90**, 502–503. <https://doi.org/10.1093/jhered/90.4.502>
- Popkin M, Piffaretti J, Clamens A-L, Qiao G-X, Chen J, Vitalis R, Vanlerberghe-Masutti F, Gupta RK, Lamaari M, Langella O, Coeur d’acier A, Jouselin E (2017) Large-scale phylogeographic study of the cosmopolitan aphid pest *Brachycaudus helichrysi* reveals host plant associated lineages that evolved in allopatry. *Biological Journal of the Linnean Society*, **120**, 102–114. <https://doi.org/10.1111/bij.12869>
- Posada D, Crandall KA (2001) Intraspecific gene genealogies: trees grafting into networks. *Trends in ecology & evolution*, **16**, 37–45. [https://doi.org/10.1016/S0169-5347\(00\)02026-7](https://doi.org/10.1016/S0169-5347(00)02026-7)
- Pritchard JK, Stephens M, Donnelly P (2000) Inference of Population Structure Using Multilocus Genotype Data. *Genetics*, **155**, 945. <https://doi.org/10.1534/genetics.116.195164>

- Prugnolle F, Manica A, Balloux F (2005) Geography predicts neutral genetic diversity of human populations. *Current Biology*, **15**, R159–R160. <https://doi.org/10.1016/j.cub.2005.02.038>
- Pudlo P, Marin J-M, Estoup A, Cornuet J-M, Gautier M, Robert CP (2016) Reliable ABC model choice via random forests. *Bioinformatics*, **32**, 859–866. <https://doi.org/10.1093/bioinformatics/btv684>
- Puechmaille SJ (2016) The program structure does not reliably recover the correct population structure when sampling is uneven: subsampling and new estimators alleviate the problem. *Molecular ecology resources*, **16**, 608–627. <https://doi.org/10.1111/1755-0998.12512>
- Raynal L, Marin J-M, Pudlo P, Ribatet M, Robert CP, Estoup A (2019) ABC random forests for Bayesian parameter inference. *Bioinformatics*, **35**, 1720–1728. <https://doi.org/10.1093/bioinformatics/bty867>
- Rebijith KB, Asokan R, Hande HR, Joshi S, Surveswaran S, Ramamurthy VV, Krishna Kumar NK (2017) Reconstructing the macroevolutionary patterns of aphids (Hemiptera: Aphididae) using nuclear and mitochondrial DNA sequences. *Biological Journal of the Linnean Society*, **121**, 796–814. <https://doi.org/10.1093/biolinnean/blx020>
- Ripley BD, Ripley BD The R project in statistical computing. *MSOR Connections*, 2001.
- Rispe C, Legeai F, Nabity PD, Fernández R, Arora AK, Baa-Puyoulet P, Banfill CR, Bao L, Barberà M, Bouallègue M, Bretaudeau A, Brisson JA, Calevro F, Capy P, Catrice O, Chertemps T, Couture C, Delière L, Douglas AE, Dufault-Thompson K, Escuer P, Feng H, Forneck A, Gabaldón T, Guigó R, Hilliou F, Hinojosa-Alvarez S, Hsiao Y, Hudaverdian S, Jacquin-Joly E, James EB, Johnston S, Joubard B, Le Goff G, Le Trionnaire G, Librado P, Liu S, Lombaert E, Lu H, Maibèche M, Makni M, Marcet-Houben M, Martínez-Torres D, Meslin C, Montagné N, Moran NA, Papura D, Parisot N, Rahbé Y, Lopes MR, Ripoll-Cladellas A, Robin S, Roques C, Roux P, Rozas J, Sánchez-Gracia A, Sánchez-Herrero JF, Santesmasses D, Scatoni I, Serre R-F, Tang M, Tian W, Umina PA, van Munster M, Vincent-Monégat C, Wemmer J, Wilson ACC, Zhang Y, Zhao C, Zhao J, Zhao S, Zhou X, Delmotte F, Tagu D (2020) The genome sequence of the grape phylloxera provides insights into the evolution, adaptation, and invasion routes of an iconic pest. *BMC Biology*, **18**, 90. <https://doi.org/10.1186/s12915-020-00820-5>
- Rius M, Darling J (2014) How important is intraspecific genetic admixture to the success of colonising populations? *Trends in ecology & evolution*, **29**. <https://doi.org/10.1016/j.tree.2014.02.003>
- Rognes T, Flouri T, Nichols B, Quince C, Mahé F (2016) VSEARCH: a versatile open source tool for metagenomics. *PeerJ*, **4**, e2584. <https://doi.org/10.7717/peerj.2584>
- Rousset F (2008) GENEPOP '007: a complete re-implementation of the GENEPOP software for Windows and Linux. *Molecular ecology resources*, **8**, 103–6. <https://doi.org/10.1111/j.1471-8286.2007.01931.x>
- Roux C, Pannell JR (2015) Inferring the mode of origin of polyploid species from next-generation sequence data. *Molecular Ecology*, **24**, 1047–1059. <https://doi.org/10.1111/mec.13078>
- Rozas J, Ferrer-Mata A, Sánchez-DelBarrio JC, Guirao-Rico S, Librado P, Ramos-Onsins SE, Sánchez-Gracia A (2017) DnaSP 6: DNA Sequence Polymorphism Analysis of Large Data Sets. *Molecular Biology and Evolution*, **34**, 3299–3302. <https://doi.org/10.1093/molbev/msx248>
- Russell JA, Weldon S, Smith AH, Kim KL, Hu Y, Łukasik P, Doll S, Anastopoulos I, Novin M, Oliver KM (2013) Uncovering symbiont-driven genetic diversity across North American pea aphids. *Molecular Ecology*, **22**, 2045–2059. <https://doi.org/10.1111/mec.12211>
- Simon J-C, Rispe C, Sunnucks P (2002) Ecology and evolution of sex in aphids. *Trends in Ecology & Evolution*, **17**, 34–39. [https://doi.org/10.1016/S0169-5347\(01\)02331-X](https://doi.org/10.1016/S0169-5347(01)02331-X)
- Simon J-C, Stoeckel S, Tagu D (2010) Evolutionary and functional insights into reproductive strategies of aphids. *Comptes Rendus Biologies*, **333**, 488–496. <https://doi.org/10.1016/j.crvi.2010.03.003>
- Sow A, Brévault T, Benoit L, Chapuis M-P, Galan M, Coeur D'acier A, Delvare G, Sembène M, Haran J (2019) Deciphering host-parasitoid interactions and parasitism rates of crop pests using DNA metabarcoding. *Scientific Reports*, **9**, 3646. <https://doi.org/10.1038/s41598-019-40243-z>
- Spengler RN (2019) Origins of the Apple: The Role of Megafaunal Mutualism in the Domestication of Malus and Rosaceous Trees. *Frontiers in Plant Science*, **10**. <https://doi.org/10.3389/fpls.2019.00617>
- Stamatakis A (2014) RAxML version 8: a tool for phylogenetic analysis and post-analysis of large phylogenies. *Bioinformatics*, **30**, 1312–1313. <https://doi.org/10.1093/bioinformatics/btu033>
- Stekolshchikov AV (2006) Aphids of the genus *Dysaphis* Börner (Homoptera, Aphididae) living on plants of the family polygonaceae. *Entomological Review*, **86**, 787–805. <https://doi.org/10.1134/S0013873806070049>

- Stukenbrock EH (2016) The role of hybridization in the evolution and emergence of new fungal plant pathogens. *Phytopathology*, **106**, 104–112. <https://doi.org/10.1094/PHYTO-08-15-0184-RVW>
- Stukenbrock EH, McDonald BA (2008) The Origins of Plant Pathogens in Agro-Ecosystems. *Annual Review of Phytopathology*, **46**, 75–100. <https://doi.org/10.1146/annurev.phyto.010708.154114>
- Szpiech ZA, Jakobsson M, Rosenberg NA (2008) ADZE: a rarefaction approach for counting alleles private to combinations of populations. *Bioinformatics*, **24**, 2498–2504. <https://doi.org/10.1093/bioinformatics/btn478>
- Tajima F (1989) Statistical method for testing the neutral mutation hypothesis by DNA polymorphism. *Genetics*, **123**, 585–595. <https://doi.org/10.1093/genetics/123.3.585>
- Tardío J, Arnal A, Lázaro A (2021) Ethnobotany of the crab apple tree (*Malus sylvestris* (L.) Mill., Rosaceae) in Spain. *Genetic Resources and Crop Evolution*, **68**, 795–808. <https://doi.org/10.1007/s10722-020-01026-y>
- Tsuchida T, Koga R, Shibao H, Matsumoto T, Fukatsu T (2002) Diversity and geographic distribution of secondary endosymbiotic bacteria in natural populations of the pea aphid, *Acyrtosiphon pisum*. *Molecular Ecology*, **11**, 2123–2135. <https://doi.org/10.1046/j.1365-294X.2002.01606.x>
- Turcotte MM, Araki H, Karp DS, Poveda K, Whitehead SR (2017) The eco-evolutionary impacts of domestication and agricultural practices on wild species. *Philosophical Transactions of the Royal Society B: Biological Sciences*, **372**, 20160033. <https://doi.org/10.1098/rstb.2016.0033>
- Vekemans X, Hardy OJ (2004) New insights from fine-scale spatial genetic structure analyses in plant populations. *Molecular Ecology*, **13**, 921–935. <https://doi.org/10.1046/j.1365-294X.2004.02076.x>
- Vorburger C, Lancaster M, Sunnucks P (2003) Environmentally related patterns of reproductive modes in the aphid *Myzus persicae* and the predominance of two ‘superclones’ in Victoria, Australia. *Molecular Ecology*, **12**, 3493–3504. <https://doi.org/10.1046/j.1365-294X.2003.01998.x>
- Wang Y, Hereward J, Zhang G (2015) High Spatial Genetic Structure and Genetic Diversity in Chinese Populations of *Sitobion miscanthi* (Hemiptera: Aphididae). *Journal of economic entomology*, **109**. <https://doi.org/10.1093/jee/tov294>
- Warneys R, Gaucher M, Robert P, Aligon S, Anton S, Aubourg S, Barthes N, Braud F, Cournol R, Gadenne C (2018) Acibenzolar-S-Methyl Reprograms Apple Transcriptome Toward Resistance to Rosy Apple Aphid. *Frontiers in plant science*, **9**, 1795. <https://doi.org/10.3389/fpls.2018.01795>
- Watterson GA (1975) On the number of segregating sites in genetical models without recombination. *Theoretical Population Biology*, **7**, 256–276. [https://doi.org/10.1016/0040-5809\(75\)90020-9](https://doi.org/10.1016/0040-5809(75)90020-9)
- Watterson GA (1978) The homozygosity test of neutrality. *Genetics*, **88**, 405–417.
- Wegmann D, Leuenberger C, Neuenschwander S, Excoffier L (2010) ABCtoolbox: a versatile toolkit for approximate Bayesian computations. *BMC bioinformatics*, **11**, 1–7. <https://doi.org/10.1186/1471-2105-11-116>
- Wei G, Zuurui S, Zhihong L, Lingwang G (2005) Migration and population genetics of the grain aphid *Macrosiphum miscanti* (Takahashi) in relation to the geographic distance and gene flow. *Progress in Natural Science*, **15**, 1000–1004. <https://doi.org/10.1080/10020070512331343176>
- Weir B, Cockerham C (1984) Weir BS, Cockerham CC.. Estimating F-Statistics for the Analysis of Population-Structure. *Evolution* 38: 1358-1370. *Evolution*, **38**, 1358–1370. <https://doi.org/10.2307/2408641>
- Wilkaniac B (1993) The influence of feeding of the rosy apple aphid, *Dysaphis plantaginea* (Pass.) (Homoptera: Aphididae) on the growth of apple fruits. *Roczniki Nauk Rolniczych. Seria E, Ochrona Roślin*, **23**, 75–78.
- Xiang Y, Huang C-H, Hu Y, Wen J, Li S, Yi T, Chen H, Xiang J, Ma H (2017) Evolution of Rosaceae fruit types based on nuclear phylogeny in the context of geological times and genome duplication. *Molecular biology and evolution*, **34**, 262–281. <https://doi.org/10.1093/molbev/msw242>
- Zepeda-Paulo F, Ortiz-Martínez S, Silva AX, Lavandero B (2018) Low bacterial community diversity in two introduced aphid pests revealed with 16S rRNA amplicon sequencing. *PeerJ*, **6**, e4725. <https://doi.org/10.7717/peerj.4725>
- Zepeda-Paulo FA, Simon J -C., Ramírez CC, Fuentes-Contreras E, Margaritopoulos JT, Wilson ACC, Sorenson CE, Briones LM, Azevedo R, Ohashi DV, Lacroix C, Glais L, Figueroa CC (2010) The invasion route for an insect pest species: the tobacco aphid in the New World. *Molecular Ecology*, **19**, 4738–4752. <https://doi.org/10.1111/j.1365-294X.2010.04857.x>

- Zhang B, Edwards O, Kang L, Fuller S (2014) A multi-genome analysis approach enables tracking of the invasion of a single Russian wheat aphid (*Diuraphis noxia*) clone throughout the New World. *Molecular Ecology*, **23**, 1940–1951. <https://doi.org/10.1111/mec.12714>
- Zhou H-X, Zhang R-M, Tan X-M, Tao Y-L, Wan F, Wu Q, Chu D (2015) Invasion Genetics of Woolly Apple Aphid (Hemiptera: Aphididae) in China. *Journal of Economic Entomology*, **108**. <https://doi.org/10.1093/jee/tov074>
- Zytynska SE, Weisser WW (2016) The natural occurrence of secondary bacterial symbionts in aphids. *Ecological Entomology*, **41**, 13–26. <https://doi.org/10.1111/een.12281>