

News

Exit 238
New I-57
interchange
saves time
Page 4



Back on the farm
— the way it used
to be
... page 7

**There's something
for everyone!**
Illinois State Fair runs
Aug. 10 through 20
full-page of choices
Page 9

State Fair

Sports

**Cooper
lists
recruits
looking to fall**
Page 12

PROSPECTUS

Vol. 23, No. 2

Parkland College — Champaign, Illinois

Thursday, July 20, 1989

Strike up the band!



PARKLAND COMMUNITY BAND PERFORMS: The Parkland Community Band performs at Farmer City Sunday, July 16, as a part of the opening of the 60th Annual Farmer City Fair. Pictured here from the clarinet section are Marlys Clark, Mahomet; Darrell W. Aydelott, Decatur; Marvin G. Weinbaum, Urbana; Dan Leach, Monticello; and Diane Flanagan, Thomasboro. Membership in the band is open to students and members of the community. The band meets on Thursday evenings at Parkland College. New members are urged to join when rehearsals resume on Aug. 31, in C148. For more information, contact Erwin Hoffman at 217/351/2483 or 351-8350.

Photo by LARRY V. GILBERT

Board votes cuts in WPCD, Micro

By Joan Doakes
Staff Writer

To cut spending and balance the budget for the first time in five years, Parkland trustees voted Wednesday to eliminate Station WPCD and the Microelectronics curriculum.

The station costs almost \$100,000, Pres. Paul Magelli said, adding that he made the recommendation "with reluctance." About \$40,000 will be allocated to dismantle the station.

Although Parkland has been the only college to offer a program to train students to make computer chips, low enrollment in the Microelectronics program forced it to be shelved, according to Alfred R. Hecht, vice-president of Academic Administration.

No new students in Broadcast or Microelectronics will be accepted, but students currently enrolled

will be allowed to complete the programs.

Board members also approved program cuts they had discussed at previous meetings. These are: Avionics, Clock Repair, Cosmetology, Diesel and Farm Equipment, Recreation Leadership, and Jewelry Store Management.

Pauline Kayes, instructor, appealed to the Board to reinstate the half-time coordinator, half-time Humanities instructor position to be assigned to the Women's Program. She pointed out that about 60 percent of Parkland students are women, and population trends indicate that this number will grow to 75 percent in the mid-1990's.

Other supporters of the Women's Program and those supporting the Diesel program also made pleas to the Board.

Parkland garners Foundation grant

By Avis Eagleston-Barker
Staff Writer

Parkland has received a \$395,000 National Science Foundation grant to establish a laboratory containing a network of computers which will be used to give students hands-on experience in the use and management of interrelated operating systems.

In making the announcement, Pres. Paul Magelli said coursework will be designed by Parkland department chairs and actual classes for the two-semester program are scheduled to begin in Fall, 1990.

The program is designed for students who wish certification in universal computation technology, those who wish multi-computer literacy, and adults seeking retraining in the current technology.

The new lab will be established with donations and purchases of two or more computer systems from seven cooperating vendors: Apple Computer; NeXT, Inc.; Sun Microsystems; IBM; Silicon Graphics; Digital Equipment, and AT&T.

Networks based on current standards such as Ethernet and Token Ring will connect all the systems, permitting information to be transferred among the computers in the system.

Those involved in the project include James Trefzger, project director and Parkland math and computer science instructor; Sheridan Turner, director, Chicago High Tech Association; Dennis Graham, president and owner of WOREDLINK, Inc., Champaign; Robert Rubel, Parkland math and computer science instructor, and Steven Christensen, project consultant and senior research scientist, National Center for Supercomputing Applications, UI.

For additional information about the new program, contact Sunny Christensen, associate project director and program developer, Parkland Office of Career Programs.

OPINION / EDITORIAL

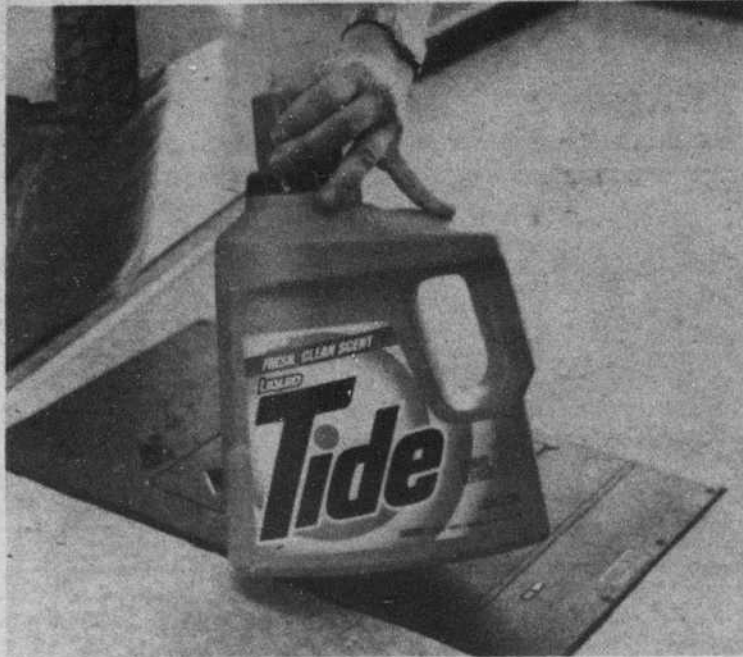
New form of abuse hits local groceries

By Jennifer Olach
Staff Writer

Our world has become riddled with abuse. Child abuse, spouse abuse, etcetera, etcetera. I would like to introduce a new form of abuse, checker abuse. The actual abuse has probably gone unacknowledged since the invention of the grocery store, possibly back to the time of trading posts, but has existed nonetheless. Yes, those friendly faces you encounter when purchasing your weekly rations are subjects of unrelenting terror. Their main tormentors . . . customers.

For those of you who are confused, I will present examples of checker abuse. I feel I am a veritable expert in the field as I have worked in three local supermarkets (with a short stint as a waitress, but that's another article.)

The first and foremost form of checker abuse is those customers, and you know who you are, who become enraged at the checker when an item is rung up incorrectly. The ones who are forever saying, "Did you ring that up at \$X?" For everyone's information I did not ring it up at anything. I merely scanned the item and it rang itself up at the price that has been entered into the system. Screaming at the checker is completely unwarranted as we have no part in the process of entering prices. So what should you, as Joe



customer, do? Kindly and quietly request to have the price checked. If it is wrong, we will correct it. If you must scream at someone, track down the pricing coordinator (sorry Mr. Mefford.)

Along with the aforementioned group goes another equally violent set of people. Those customers whose failure to read correctly signs bearing prices prompt similar screaming attacks. These are the customers who see a sale sign in the general vicinity of the item they wish to purchase and immediately assume that all items in the area carry the sale price. Confused? O.K. Here's an example. A woman unloads her cart of groceries,

including a ten pound box of laundry soap. As the checker, I happily scan along until reaching the box of soap, and then...with a clap of thunder and bolt of lightning...the woman sprouts horns and a pointed tail and screams, "That was \$1.99!" Fearing for my life, I looked at the receipt and \$5.69 glares back at me. I meekly called a stock boy over to check the price and...What Ho!? \$1.99 was the price of a sixteen ounce bottle of dishwashing detergent on the shelf below the controversial Tide. I rest my case.

These are two of the more major forms of checker abuse but there are others. The following should

act as a guide to determine if you are a member of this dreadful group. Several groups of checker abusers are listed and if you feel you belong to one or more of the groups, electro-shock therapy is recommended.

—Those of you who, though you are with four burly husbands and sons, refuse to remove the items from the bottom of the cart. You are the ones who stand and stare as the checker contorts his or her body while writhing under the register in an attempt to reach these items.

—Those of you who, when the checker glances at the produce code sheets repeatedly yell, "89 cents a pound!" In all the stores I have worked we must use codes, not prices, to ring produce items up. Regardless of how much it is a pound, I cannot use your unwanted information.

—Those of you who take two cans out of a six-pack. If they were ment to be sold that way God would never have invented those plastic things. Similarly those who want one lightbulb, one stick of butter or one bar of soap.

—Those of you who attempt to use expired coupons, ones for items you did not purchase or six coupons for a single item. In short, coupon fraud.

—Those of you who ask us to "make sure the bags are light," when you have purchased only canned goods and gallons of milk.

—Those of you who complain to us when the lines to the check-out are long. You can leave any time you want. We can't.

—Those of you who, upon seeing you're total of \$150 say, "Oh. I only have \$40."

—Those of you who say, "X store has this on sale for \$1.99!" SO BUY IT THERE! What are we supposed to do?

—Those of you who, when

asked to produce a drivers license say, "It's all on the check!" Well excuse me very much but I have probably never seen you before so how am I supposed to know you didn't steal the checks?

—Those of you who regularly choose to ignore the "Express Lane X items or less CASH ONLY" sign. Two things, X items or less means exactly what it says, just because you're buying 175 canned items does not make you exempt from this rule. Cash is that green, silver and copper stuff put out by the U.S. Treasury . . . period.

—Those of you who call and say, "How much is you're Pepsi?" If you must know come in and look for yourself.

—Those of you who call on a holiday and ask, "Are you open?" No, actually I'm just here answering the phone to tell idiots like you that we're closed.

—(This is my favorite.) Those of you who come up to a checker with an item and say, "How much is this?" You're the one who got it off the shelf which bears the price tag. Then again, one woman told me I should know the prices of every item in the store. Right lady!

All of these actions may not seem substantial enough to be considered abuse, but compounded over hours, days, weeks and possibly years, this abuse can have a profound effect on the checker's mind.

There are those of you who are always kind and polite, and the checkers of the world thank you. But as for the vast majority of others, you should realize that many of us are high-school and college students. And just wait till we've passed you on the ladder of success. Wait till we break out of the servant mold you see us in now. Just wait till I get the chance to take your kids' wedding pictures. Revenge will be sweet.

'Host of Issues' - Johnson

Dear Editor:

The United States Supreme Court probably performed a beneficial, if unfortunate and accidental, service to the Illinois General Assembly. With its decision on the abortion case only two days after the legislature's adjournment, public and media attention have been almost totally focused upon that decision and deflected from a number of actions of the House and Senate which could have raised deep concern and legitimate anguish among the citizens.

The point is simple. Abortion is a deeply emotional and significant subject, upon which opinion dramatically and genuinely differs. However, whatever one's feelings on the matter, I urge each prospective voter to base their decision on the whole host of issues which face Illinois residents: the quality and future of education, taxes, drug abuse and treatment, jobs and business climate, civil and criminal justice, gun control, the condition and safety of the state's roads and bridges, the environment, and

the future of mental health. Single-issue candidates, campaigns and voters do a disservice to the core of our democratic system.

I urge the people of the state: let abortion be a significant factor in your vote, but exercise responsibility in that process by also considering the whole of the future of Illinois and the myriad of issues which affect that future.

Sincerely
Timothy V. Johnson
State Representative
104th District


Memorial scholarship for Mark D. Davis

Parkland College has established a memorial scholarship in honor of Mark D. Davis, son of Barbara and Doug Davis of Mahomet. Mark was a Parkland graduate as well as a graduate of Mahomet-Seymour High School. Doug Davis is associate director of safety and security at Parkland.

The scholarship will be awarded to a graduate of Mahomet-Seymour High School who plans to attend Parkland College. The student must rank in the top third of the graduating class and must also show financial need.

Individuals who wish to contribute to the scholarship fund may send checks payable to the Parkland College Foundation indicating that the donation is for the Mark D. Davis Memorial Scholarship.

Checks should be mailed to the Financial Aid Office, Parkland College, 2400 W. Bradley, Champaign, Illinois 61821.



Parkland College
PROSPECTUS

Member of Illinois Community College Journalism Association

Contributors: Avis Eagleston-Barker, Emma M.S. Perez, Joan Doakes, Donnie Robinson, Jennifer Olach

Advisor: Larry V. Gilbert

The Prospectus is printed by students of Parkland College, 2400 W. Bradley Ave., Champaign, IL 61821.

Opinions expressed in editorials, letters to the editor and unsolicited stories are not necessarily those of the Prospectus or of Parkland College. Letters to the Editor must be signed (names will be printed) and phone number must accompany letter.

Editorial offices are located in X155 at Parkland College, phone (217) 351-2216. Advertising rates available upon request.

The Prospectus is distributed on the Parkland Campus and throughout Champaign-Urbana.

United Way

Volunteer Opportunities

Call the Volunteer Center of the United Way, 352-5151, or stop in at our office at 1802 Woodfield, Savoy, for these volunteer opportunities.

KEYBOARD PLAYER: If you can play the piano you can play the keyboard. Nursing home will provide a standard size keyboard for you to play for selected residents. Just an informal program — 30 minutes of old favorites or light classical. Daytime, early evening or Saturdays; once a month or more. Have a rewarding experience. Music can reach those who respond to little else.

FOOD TRANSPORTER: Shelter for homeless women and their children would appreciate your willingness to help. On the second Thursday of each month, early afternoon, pick up items from food-bank and deliver to shelter. Need a van or pickup and ability to do some possible lifting of boxes. Mileage reimbursement provided.

EMERGENCY COMMUNICATIONS: With your assistance, local humanitarian organization can continue to assure that service men and women receive news of family hospitalization, death or birth. Aid in verification and communication with family and commanding officer. This "at home" job provides training, pager and back-up help for evening or weekend shifts.

ARTS AND CRAFTS VOLUNTEER: Encourage youthful creativity! Plan and supervise arts and crafts activities at recreational center for disadvantaged youth. A cultural enrichment kit is available for ideas, materials and training. If you enjoy working with young people, choose any daytime hours Tuesday through Friday.



United Way
of Champaign County "It brings out the best in all of us."

CAMPUS NEWS

Olson gets award as top employee

Marcia Olson, St. Joseph, has been named the Spring 1989 Employee of the Semester at Parkland College. She is secretary to the vice president for fiscal administration and previously has worked for three business administrators at Parkland.

A graduate of the former Illinois Commercial College in Champaign, Olson joined the Parkland staff in 1968. In her 21 years at the College, she has served the Nonacademic Staff Council in several capacities,



MARCIA OLSON

including the offices of the president and vice president.

Facility use increases

Community participation at workshops, conferences, and other events held on the Parkland College campus has increased dramatically during the fall 1988 semester, according to a report filed recently by Paul Kunkel, Parkland's director of research and planning. At the same time, the use of College facilities by various community groups has also increased.

The report, filed with the Illinois Community College Board in February 1989, is a "Survey of Fall 1988 Community Education and Community Service Activities." In the report, Parkland lists 150 activities (including "community service workshops, conferences and/or seminars conducted by the college") for the fall 1988 semester, and it lists 18,414 participants in these activities. The ICCB requests that the "number of participants should be a total county which may include duplicates in two different activities."

A similar report, filed by Kunkel for the fall 1987 semester, lists 203 activities and 6,084 participants.

According to Kunkel, Parkland substantially reduced scheduling of noncredit classes for the fall 1988 semester, particularly those noncredit classes that were not financially self-sustaining. But the College increased community service workshops, conferences, and events that were self-sustaining, and at the same time, the College encouraged expanded use of Parkland's facilities by community groups. For

example, the Champaign-Urbana Junior League's Holiday Mart, held at Parkland for the first time in October, 1988, attracted more than 3,000 participants.

Other recent events held on campus that have attracted large numbers of participants include the Farm Toy Show, local Chambers of Commerce "Business After Hours" meetings, the American Diabetes Association Bikethon Farm Bureau Leadership Training Workshops, the Illinois High School Association state finals in speech and drama, and various public school teachers and administrators meetings.

On an annual basis, Parkland is the site for postal employee exams, state police training, educational teleconferences, and other similar events. The College also serves as host for portions of the Prairie State Games. "Parkland has become a popular place for numerous group activities," explained Kunkel, who added that the College has also improved documentation for community attendance at all events beginning with the fall 1988 semester.

"The community is benefiting from the variety of offerings," Kunkel said. "But there is a difference now in the learning experiences and events offered and in the way we record them."

For information regarding use of campus facilities for community events, contact Bev Kieffer, special events coordinator, 351-2508.

COMMUNITY CALENDAR

SUMMER SESSION

The eight-week Summer session is from June 12 through Aug. 3. Classes meet on a four-day schedule, Monday through Thursday.

The last day of classes is Aug. 1. Finals are on Aug. 2 and 3.

Library Hours

Monday through Thursday: 7:30 a.m. to 10 p.m.

Bookstore

Through the end of summer school: 8 a.m. to 4 p.m. Monday through Thursday

Hardee's (main)

Open from 7 a.m. to 2 p.m. Monday through Thursday

Hardee's II

Open from 11 a.m. to 8 p.m. Monday through Thursday

PARKLAND EVENTS

Staerke Planetarium Public Programs, Summer 1989

WE CAME IN PEACE: July 20, 1969. Half a billion people watched as two fellow human beings first walked upon another world. Return with us to explore our ancestors' fascination with the moon, to experience the years of the "space race," and to travel to the lunar surface with Buzz Aldrin and Neil Armstrong to relive the historic mission of Apollo 11.

GREAT BARRIER REEF (Big Screen Film)

Perhaps the most acclaimed big-screen movie yet made, the GREAT BARRIER REEF thrills us with the greatest assemblage of lifeforms on this planet, in the largest structure build by living things anywhere on Earth.

PRAIRIE SKIES

Learn about our prairie skies in this live-narrated tour of the heavens. Featuring currently visible constellations and planets as well as associated sky lore.

MAGIC SKYS

A very basic introduction to the sky of day and night for children six and under. They are introduced to the sun, moon, and stars, their appearances and motions. Music and artwork are interwoven with live narration to ease the children through one whole day and night. Concepts of time and direction are introduced.

Schedule information: 351-2446.

COMMUNITY EVENTS

Tues., Farmer's Market, Old Farm Shopping Center, 7:30 a.m.

Tues. and Thurs. "Walkaerobics," McKinley Family YMCA, 500 W. Church St., Champaign, 6:45-7:30 a.m. and 9-9:45 a.m. admission charge 356-2597

Wed. "Summer Movies," Champaign Public Library and Information Center, 505 S. Randolph St., Champaign, 7:30 p.m. 356-3980 FREE

Thurs., "Farmer's Market," Walnut and Main Sts. (behind Joseph Kuhn and Co.), Champaign, 7 a.m.-sell-out. 359-0736 FREE

Fri., "Friday Night Videos," Champaign Public Library and Information Center, 505 S. Randolph St., Champaign, 7:30 p.m. 356-7252

Sun. "Concert in the Park" (thru 7/30), Champaign Park Dist., Hessel Park, Kirby Ave., Champaign, 7 p.m. 398-2550 FREE

Sat., "Farmer's Market," Lincoln Square Mall, Urbana, 8 a.m.-sell-out, 367-4092

Sun. "Concert in the Park" (thru 7/30), Champaign Park Dist., Hessel Park, Kirby Ave., Champaign, 7 p.m. 398-2550 FREE

JULY

25: "Movie in the Park" featuring, "The Boatniks," Urbana Park Dist., Crystal Lake Park, N. Broadway Ave., Urbana, dusk 367-1536 FREE

25: "Movie in the Park," Champaign Park Dist., Robeson Park, Southmoor Dr., Champaign, 8:30 p.m. 398-2550 FREE

26: "Parkland College Sampler" (campus tour and information session), Parkland College, 2400 W. Bradley Ave., Champaign, 10:30 a.m. and 6 p.m. 351-2594 FREE

26: "Owl Prowl," Urbana Park Dist., Meadowbrook Park, Windsor Rd., Urbana, 8-9:30 p.m. 356-1544 FREE

26: "Movie in the Park," Champaign Park Dist., Morrissey Park, Windsor Rd., Champaign, 8:30 p.m. 398-2550 FREE

27: "Movie in the Park" featuring, "The Boatniks," Urbana Park Dist., Crestview Park, Cottage Grove and Colorado Ave., Urbana, dusk 367-1536 FREE

29: "Garden Party," Champaign Co. Forest Preserve Dist., Early American Museum and Botanical Garden, Rt. 47, Mahomet, admission charge 1-586-2612

29: "Women's Amateur Softball Assn. State Tournaments" (thru 8/6), Urbana Park Dist., Prairie Park, E. Washington Ave., Urbana, 367-1536 FREE

Hensler new resources director

Dr. Vicki Hensler, Champaign, has been named director of human resources at Parkland College. Formerly, she was assistant director of career planning and placement at the college.

Hensler, who joined Parkland in 1987, holds bachelor's, master's and doctorate degrees from the University of Illinois. Before joining the administrative staff, Hensler served Parkland as an instructor of human resource manage-

ment and of career planning courses.

The former owner of Professional Personal Management, a consulting and career counseling firm, Hensler is a member of several personnel organizations, including the American Society for Personnel Administration, the American Association of Counseling and Development, and the Champaign-Urbana Personnel Association.



DR. VICKI HENSLER

Bergman at Harvard meeting

Anita J. Bergman, Director of Economic development at Parkland College, was one of ninety-five participants recently attending Harvard University's summer, 1989, Management Development Program. The Management Development Program (MDP), now in its fourth year, is a comprehensive, intensive two week program for mid-level administrators of colleges and universities. It provides an opportunity for growth, renewal and development of new insights into management of higher educa-

tion.

Participants in this program are College and University deans, development officers, provosts and departmental chairs from institutions in both the public and private sectors. Their wide range of expertise is an integral component of all aspects of the program.

Instructors include professors from the Harvard Graduate School of Education and leading higher education experts from around the country. The curriculum focused on major issues faced by universi-

ty administrators: diversity, financial planning, human resource and legal concerns.

Dr. Sharon McDade, Director of the Management Development Program, said that this year's admissions committee was extremely impressed with the quality of the applicant pool, "It was a very competitive admissions process, and we are very proud of the higher education leaders that have been selected for the Management Development Program."

Parkland's Cade named 'outstanding'

Edward W. Cade, English instructor, was selected as an outstanding instructor to represent Parkland College at a statewide conference held recently by the Illinois Community College Trustees Association.

The ICCTA selected the state's outstanding community college faculty members for the Faculty of the Year awards from the nominations submitted by Illinois community colleges.

Cade was instrumental in setting up the computer assisted composition classes for the Humanities Department.

Applications still available Seven students receive fall scholarship awards

By Joan Doaks
Staff Writer

Four students have been awarded Journalism scholarships, and three others were named to Music Scholarships, David M. Jones, Chair, Fine and Applied Arts Department, has announced.

The Journalism students are: Richard Cibelli, Jennifer Olach, and Emma Perez, all sophomores, and Carianne Cicone, freshman.

The Music students are: Cara Manning, piano, sax, and voice; Kelly Miller, voice and flute, and

Jerrod Summers, voice. All are freshmen. Five other Music students were awarded continuing scholarships for the Fall term.

Scholarship students must maintain a B grade average. Journalism scholarship winners work at least eight hours a week on the *Prospectus*, and Music award students participate in a variety of Parkland musical productions.

Scholarship applications for the Fall semester continue to be taken, Jones said.

COMMUNITY/AREA NEWS

Interchange to aid long drives

By Joan Doaks
Staff Writer

Parkland students and personnel now can save almost two hours of commuting time per week with the opening of the new northwest interchange that connects three highways with Mattis Avenue.

The new corridor which allows FAI-57, FAI-74, and FAI-72 traffic to flow into northwest Champaign will particularly reduce driving time for residents of the Paxton, Rantoul, Gifford, and Penfield areas.

The \$4.6 million project was completed in two years by Champaign Asphalt and University Asphalt companies. Felmley-Dickerson Company built the bridge.

The new road is built of 13 inches of asphalt mix placed on 8 inches of lime stabilized soil mixture. Shoulders of the road are asphalt. The new structure is two-span composite of steel girders

with reinforced concrete approach spans on reinforced concrete open pier and vaulted abutments that carry TR-151 over FAI-57.

Construction required 411,000 cubic yards of dirt to be moved, resulting in the building of two lakes. Asphalt totaling 28,403 tons was laid, 1,500 cubic yards of concrete poured, 410,000 pounds of structural steel placed, 300,000 pounds of reinforcement bars tied, 12,100 linear feet of piling driven, and 30,000 linear feet of pipe laid.

Other firms participating in the construction were Strunk Bros. Co., Frank C. Feutz, Midwest Construction Service, A&A Erection, Inc., EKPO Trucking, Varsity Striping Construction Co., Butts Brothers Construction Co., Brown Development Construction, Blackhawk, Hohulin Bros. Fence, Champaign Signal & Lighting Co., Gateway Erectors, Mauer Painting Co., AGW Construction, Inc., and PAL Industries.



Gary Montgomery, technician for the Illinois Department of Transportation, prepares to remove a barricade from the northbound exit ramp entrance on I-57 north of Champaign-Urbana. Exit#238 opened to traffic Thursday morning. Motorists traveling to Parkland southbound on I-57 will save several minutes' time using this route to the college. Drivers will turn right at the top of the ramp, proceed west to the stop sign, and turn left onto Mattis. On the return home motorists will travel north on Mattis, turn right, cross the bridge, and turn left onto the ramp and proceed north on the interstate.

Photo by LARRY V. GILBERT

Welcome New Students
to Champaign-Urbana
in our New Student issue.
You'll see it Aug. 28!

Returns to Chanute Zulfer heads new squadron

CHANUTE AFB, Ill. — Lt. Col. Charles F. Zulfer has assumed command of the newly formed 3345th Mission Support Squadron at Chanute Technical Training Center. He was formerly the director of personnel here.

The new squadron will consolidate Social Actions, Air Base Group Headquarters Squadron Section and Information Services with Military Personnel, Civilian Personnel, Education Services and the Professional Military Education Center into a single unit able to respond to managerial contingencies.

The Mission Support Squadron concept, tested at a

number of Air Force Bases since 1985, has proved more effective at opening lines of communication, improving working relationships and responding to customer requests. In doing so, the squadron will implement and utilize the latest in computer technology.

For Colonel Zulfer, the birth of the new squadron gives him an opportunity to do something that most personnel officers never get to do — to be a squadron commander. It's a challenge he's been looking forward to.

Apply
today
for
the
89-90
Prospectus
Staff

Stop by
X-155
for
an
application
form . . .

or call
351-2216



ILLINOIS OPERA THEATRE PRESENTS

THE SOUND OF MUSIC

by Rodgers and
Hammerstein
Directed by
Tom Mitchell
Musical Direction
Joe Grant

July 14, 15, 21, 22 at 8 pm
September 8, 9, 15, 16 at 8 pm
\$12 / Students and Seniors \$10
Charge your tickets by phone:
217.333.6280



Krannert Center for the Performing Arts
University of Illinois at Urbana-Champaign
500 South Goodwin Avenue

**Photos by
Cari Cicone**

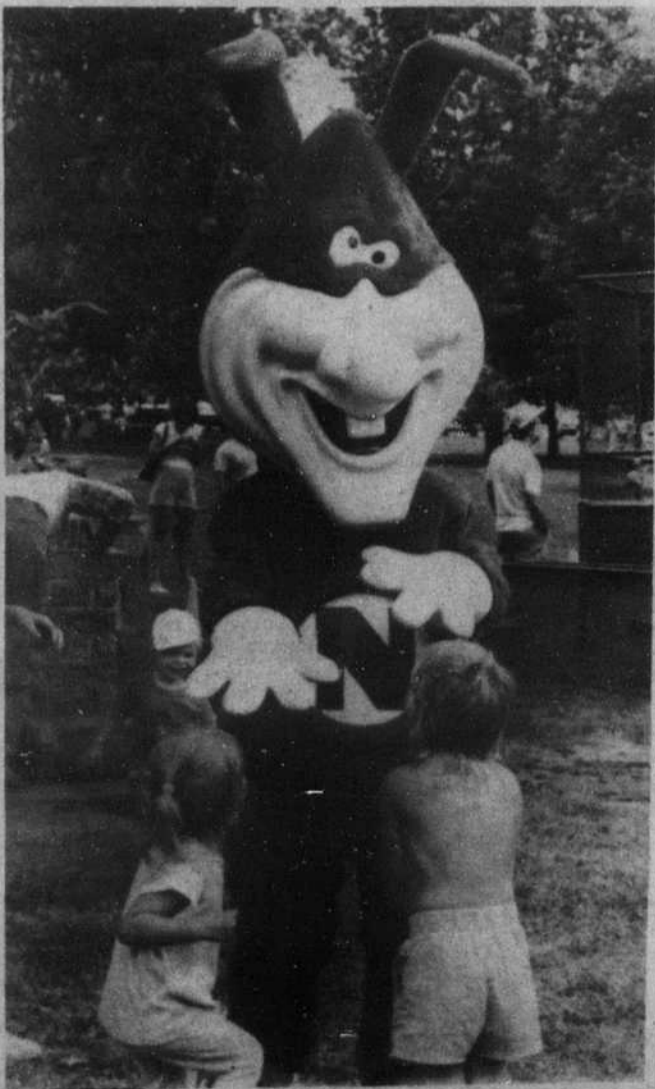


The Park District sponsored a pie-eating contest for children and adults of all ages.



Four-year-old Jessica Hickey of Champaign, was one of the many who participated in having their faces painted at Hessel Park on July 15.

We saw you in the park . . .



The "Noid" from Domino's Pizza was on hand to greet all participants at "A Day in the Park," including these two children.



Masters paraded their canines around a section of Hessel Park in the Champaign Park District's dog show.

COMMUNITY/AREA NEWS

Sidney benefit for teen

By Avis Eagleston-Barker
Staff Writer

Residents of Sidney will hold a benefit for one of its young residents on Aug. 5 from 10 a.m.-7 p.m. at Witt Park.

Thirteen-year-old Angela Ward, an eighth grader at Unity Jr. High, and the oldest of five children, was recently diagnosed as having neuroepithelioma cancer. A portion of one lung was removed; however, the surgery was unsuccessful in removing all the tumor, and Angela is now receiving chemotherapy at Urbana's Carle Hospital.

Wanda Scott, the wife of one of the benefit organizers, says, "Angela is taking this in real good spirits. We want to have this benefit for her and her



ANGELA WARD

family because, as you can

imagine, something like this can take quite a financial toll on a family with five children."

Mrs. Scott says there will be more than twenty games ranging from a dunk tank to an egg toss with prizes offered for each game. There will also be craft and food sales and a raffle of more than one hundred items.

The Revenuers, the Broadland Dolls, and the Twin City Country bands will be among musical groups who will perform throughout the day.

To offer help or obtain more information, call benefit organizers Johnny Scott, 688-2944 or Ann Jagers, 688-2847.

Cash contributions may be sent to: Angela Ward Benefit Fund, Central Illinois Bank, Sidney, Ill. 61877.

Special music, rides for senior fairgoers

Wednesday, July 26, is Senior Citizen Day at the Greater Champaign Co. Fair.

Opening ceremonies will begin at 10 a.m. at the Grandstand with the National Anthem and the Pledge of Allegiance. Nina Miller, Jesse Watts and Art Melchi, from VFW 5520 and Auxiliary will be in charge of this part of the program.

Special musical entertainment will be given by Norris Washington, a local vocalist who has appeared many times in area nursing homes.

At 11 a.m. free rides on the Merry-Go-Round will be given.

Lunch may be brought or purchased on the fairgrounds where special discounts will be given by some concessionaires.

Harness racing is scheduled to begin at 1:30 p.m. Grandstand seats are free for any Senior Citizen attending.

Seniors are encouraged to enter the main gate where they will be given an identification ribbon. There is free admission until 3 p.m.

Particularly for Parents -

By Avis Eagleston-Barker
Staff Writer

A column for parents at Parkland and elsewhere, devoted to issues and programs of interest to youth...

All ages - The U.S. Army Construction Engineering Laboratory (USACERL) will give an Open House at its facility at 2902 Newmark Dr., Champaign, on July 26 from 10 a.m.-8 p.m.

More than fifty demonstrations and displays will be set up for self-guided or group tours. They should be especially interesting to older students considering engineering for a career. There is no admission charge.

For more information or to schedule a group tour, call 217-373-7216.
All Ages - The Champaign Park District has announced the Prairie Farm 1990 Animal Calendar Art Contest. Any resident of Champaign-Urbana is eligible to enter, from now until Aug. 11, black and white art work depicting any animal or scene at Prairie Farm. The farm is located near the corner of Kirby Ave. and Crescent Dr. behind Sholem Pool.

Categories are: ages 7-under; 8-12; 13-17 and 18-up. The winning entry from each class will be used in the 1990 Park District Calendar.

For further information or for a copy of the complete rules, contact the Park District at 217-398-2550.

Ages Infant-5 - The Champaign County Chapter of the American Red Cross is continuing to loan toddler car seats to help Champaign County residents comply with Illinois state law. (All children under age four must travel in approved car seats when in a parent's or guardian's vehicle. Those ages four and five must be restrained in a car seat, booster seat or seat belt.)

The car seats will be loaned from one weekend to a period of six months for a \$15 fee. When the seats are returned in good condition, a refund of \$10 is given. The Red Cross is currently the only county agency offering the larger seats designed to accommodate a child of up to 40 pounds. Volunteers will set up appointments with renters to insure proper usage of the seats.

Contact the Red Cross weekdays, 9 a.m.-4 p.m., at 217-356-2575 for information regarding this service.

Urbana holds cleanup day

The City of Urbana will sponsor the second of three special neighborhood cleanup days on Saturday, July 22, for residents of northeast Urbana.

Courtesy appliance collection and rollaway dumpsters will be available on July 22 for Urbana residents living north of University Ave. and east of Broadway Ave.

City trucks will collect appliances left at curbside, including refrigerators, stoves, washers, dryers and dishwashers.

Residents are urged to deposit junk and debris, particularly items

from their lawns, in any of five rollaway dumpsters located in the neighborhood on July 22. Dumpsters will be located at the following neighborhood sites:

-south side of Oakland at Berkley

-north side of Oakland at Geraldine

-Chief Shemauger Park parking lot, Kerr Ave. across from Twon and Country Apartments

-Crystal Lake Drive just east of Maple

-Sycamore St. at Park St.
Residents are asked not to dump

either yard waste or toxic materials. Handicapped or elderly persons (62 years old or older) unable to transport items to the dumpsters may call the Community Development Division at 384-2447 for a courtesy pickup.

The 1989 Neighborhood Cleanup Program is sponsored by the Urbana Community Development Division in cooperation with the Urbana Public Works Department and the Champaign County Probation Office. For more information contact the Community Development Division at 384-2447.

TIA sponsors street dance Aug. 5

The Thomasboro Improvement Association is sponsoring a street dance to be held on Sat. Aug. 5, 1989. The event will be held from 6 p.m. to 12 midnight on Main Street in Thomasboro. Live music will be provided by the variety

band *American Made*. There will be fish sandwiches, hot dogs, cole slaw and chips available for purchase from 6 to 9 p.m. A donation of \$2.50 per person in advance and \$3 at the gate is requested.

Tickets can be purchased at

Busey Bank Thomasboro, George's Gas Service, Old Bank Cafe and Central Tavern in Thomasboro. In case of rain, the dance will be held in the Thomasboro Community Building, also located on Main Street.

Kaufman, Lundeen honor delegates at Chicago show

Donna Kaufman, Champaign, and Marilu Lundeen, Urbana, Parkland College students in food service management, recently participated as Student Honor Delegates at the *Salute to Excellence* student forum and banquet. The event was sponsored by the Educational Foundation of the National Restaurant Association at the National Restaurant Show in Chicago.

The annual event is held to honor outstanding professionals and students in the hospitality and food service industry.

Take off for the fair.

Starts Saturday, July 22!

For tickets or more information call the Fair Office at 217-367-8461.

Champaign County Fair

JULY 22-29

FRIDAY, July 21
(Preview Night)
DEMOLITION DERBY - 7:30 p.m.

SATURDAY, July 22
DEMOLITION DERBY - 7:00 p.m.

SUNDAY, July 23
(Family Day)
The Powell Family - 10:00 a.m.
Horse Show - 1:30 p.m.
Llama Show - 7:00 p.m.

MONDAY, July 24
(Pre-School Kid's Day and Agriculture Day)
Harness Racing, Post Time - 1:30 p.m.
Talent Show & BIG Giveaway - 7:30 p.m.

TUESDAY, July 25
(Democrat Day)
Harness Racing, Post Time - 1:30 p.m.

WEDNESDAY, July 26
(Senior Citizens & Republican Day)
Harness Racing, Post Time - 1:30 p.m.
Motorcycle Races - 7:30 p.m.

THURSDAY, July 27
(4-H Day)
World Championship Rodeo - 7:30 p.m.

FRIDAY, July 28
(Military Day)
"Super" Friday Tractor-Truck Pull & MONSTER TRUCK "Taurus" - 12:00 Noon
Swine Carcass Auction - 7:00 p.m.
Country Music Show
"Tanya Tucker" - 8:00 p.m.

SATURDAY, July 29
(Youth Day)
FLEA & CRAFT Market - 8:00 a.m.-7:00 p.m.
Tractor & Semi-Truck Pull - 5:30 p.m.

'The way we used to do it'



1989 FARM DAYS fascinated young and young at heart Saturday and Sunday north of Penfield, at the county forest preserve. Top left Tom Harris, Urbana, demonstrates blacksmith craftsmanship. Clockwise: With the aid of steam power, workers operate the "separator." Straw bales are tied as they eject from the baler. John Maurer, Oakwood, releases corn onto a conveyor belt that carries it to the sheller. At bottom left, two steam engine enthusiasts operate the 1923, 25/50 horsepower iron horse owned by H. E. Beckemeyer, of near Savoy. Races, demonstrations, a flea market, a 6 a.m. pancake breakfast, and homemade ice cream entertained hundreds of visitors.

Photos by
Larry V. Gilbert

ARTS AND ENTERTAINMENT



Performances of *Hello, Dolly!* continue this weekend at The Little Theatre on the Square in Sullivan. Cast members of the show here are Michael Knese, who plays several roles in the show, and Jennie May, Mrs. Dolly Gallagher Levi, the lady who arranges flowers and other persons' lives! Outstanding performances by all cast members and familiar tunes that one hums all the way home make the show a true hit with theater-goers in East Central Illinois.

Schedules mailed

Class Schedules have been mailed, and registration is now open for the Parkland College Fall 1989 semester, which begins Aug. 28.

Students may register by mail from now until Aug. 16 for all Parkland courses, including those offered at Chanute AFB. All stu-

dents, both full- and part-time, can reserve classes without advance payment. Mail-in forms are provided in the Class Schedule. Students may reserve up to 11 credit hours using the forms and receive a bill at a later date. Parkland accepts both VISA and MasterCard for course payment.

To Celebrate the 20th Anniversary of the Apollo Moon Landing . . .

We Came In Peace

Return with Buzz Aldrin to the surface of the moon in our tribute to the Apollo missions.

William M. Staerkel Planetarium

Special Premiere Shows

July 20 11 a.m. noon 4 p.m. 7 p.m. 8 p.m.



Parkland College
2400 W. Bradley
Champaign

For more schedule and rate information, call 351-2446 during business hours.

Twilight parade opens state fair

"Know what I mean, Vern?" State Fair Manager Merle Miller's recent announcement means that Jim Varney, the ventriloquist who repeatedly asks his dummy that very question, will be the 1989 Illinois State Fair's Twilight Parade Grand Marshal.

Varney, performing at this year's Fair, will appropriately give spectators an opportunity to sneak-a-peek at his ventriloquism, visage and possibly his dummy, Vern, during the annual Twilight Parade which leads to the Fair's Preview Night Festivities on Aug. 9.

The ventriloquist won an Emmy for his performances as "Ernest P. Worrell" in a CBS television series "Hey Vern, It's Ernest." He also starred in Disney movies "Ernest Goes to Camp," "Ernest Save Christmas," and in "Fast Food," a movie released this spring.

Varney will star as "Ernest Comes to the Fair," in a free, family-oriented Grandstand show on opening day, Aug. 10, at 1 p.m.

The Twilight Parade is scheduled to begin at 6 p.m., Wednesday, Aug. 9.

The 100-unit spectacle featuring marching music, a feast of floats, and a colorful array of cartoon characters and clowns will wind its way through downtown Springfield before passing through the Fair's Main Gate. Varney will lead the parade past approximately 35,000 spectators expected to wit-

ness this year's extravaganza.

DAZZLING SMILES will decorate the Coca-Cola Arena when youngsters aged six to 16 take the stage to display their magnificent grins during the 1989 Illinois State Fair's Smile Contest on Youth Day, Friday, Aug. 18, at 1:30 p.m.

Nearly 300 contestants will vie for the title of superior smile in the annual event sponsored by the Illinois State Dental Society (ISDS).

A winner will be selected in each of six categories, which are determined by age and gender as follows:

Most Winning Smile: Girls — ages 6 through 11 and ages 12 through 16; Boys — ages 6 through 11, ages 12 through 16

Best Tin Grin: Girls — ages 16 and under, Boys — ages 16 and under

Dentists from the ISDS, serving as judges, will award ribbons to the winners. The ISDS will also provide each participant with a bag of dental supplies containing a toothbrush, disclosing tablets, and floss, in addition to pamphlets for parents.

For additional information or an entry form contact: Illinois State Fair, Special Events, P.O. Box 576, Springfield, Ill. 62705, or phone (217) 524-5125.

The 137th annual Illinois State Fair runs Aug. 10-20.

The ImageIndex[®] For Women

Test Your Potential for Getting Ahead.

The following test is based on the probability of making the best first impression on the greatest number of people in business and professional situations. To take the test, simply circle the number opposite the entry that best describes you. Then, total up your score according to the directions below, and gauge your Image Index.

BLOUSES

1. Long-sleeved, silk or cotton, solid or small print, with conservative necklines.
2. Oxford cloth shirts with bows.
3. Lace and ruffles, sheer fabrics or plunging necklines.

SUITS

1. Classic cut, navy, grey or black, made of quality fabric and well-fitted.
2. Coordinating jacket and skirt in complimentary colors.
3. Never wear suits.

DRESSES

1. One or two-piece, natural fabric, classic styling, long sleeves, in navy, grey or black with a jacket.
2. Same as above, without a jacket.
3. Ruffled, sheer or mini-dresses.

SHOES

1. Dress shoes, always freshly shined.
2. Casual or dress shoes, rarely shined.
3. Don't think about shining shoes.

MAKE-UP

1. Lightly applied to enhance features and coloring.
2. Don't always wear make-up.
3. Applied heavier so that everybody notices it.

HAIR

1. Classic style, well-groomed, shoulder length or shorter.
2. Generally groomed, no particular style.
3. Wear latest style to stand out.

NAILS

1. Manicure at least weekly.
2. Occasionally file and groom.
3. Wait until nails are chipped before polishing.

JEWELRY

1. Regularly wear one or two important pieces.
2. Wear small, barely noticeable jewelry.
3. Wear as much as possible.

PURSES/BRIEFCASES

1. Carry one well-shined classic leather bag for everything.
2. Carry a well-organized briefcase and a purse.
3. Briefcase and/or purse is always overstuffed.

HANDSHAKE

1. Firm with men and women.
2. Only shake when a hand is offered.
3. Don't shake hands.

EYE CONTACT

1. Make frequent eye contact.
2. Not comfortable looking at someone often.
3. Normally look around the room or at feet.

POSTURE

1. Usually stand and sit erectly.
2. Don't pay attention.
3. Tend to slouch.

How to Score Your Image Index: Give yourself 6 points for every #1 answer, 3 points for every #2 answer and 0 points for every #3 answer. If your total score is:

54-72 Congratulations, you're on your way.

36-53 You're on the right track, but have some work to do.

18-35 Careful, you may be sabotaging your chances of getting ahead. There's still hope, though.

0-17 You've got a real problem. Without immediate action, your chances of making a good first impression are virtually nil.

The Image Index was developed in conjunction with Kaufman Professional Image Consultants of Philadelphia. © 1988, KWJ Brands USA. All Rights Reserved.

ENTERTAINMENT

Bob Dylan to appear at State Fair Aug. 19

SPRINGFIELD, Ill. — A daring mix of good ol' rock 'n roll, country and the blues will rattle the Grandstand when legendary songwriter/performer Bob Dylan belts out better than two decades of his mesmerizing music during his Aug. 19 appearance at the Illinois State Fair.

Tickets for the magical moment will go on sale at 10 a.m., Friday, Aug. 21. A dose of Dylan's uniquely harmonic sound is sure to jolt the crowd's consciousness, but not their pocketbooks for all seats cost only \$12. The addition of the Dylan show marks the completion of this year's Grandstand Line-Up, according to State Fair officials.

Dylan is coming off a recent European tour with the Grateful Dead. In the last year, he has collaborated with George Harrison, the late Roy Orbison and others on a rather different display of musical talents. They called themselves "The Traveling Wilburys."

Dylan's early songs, which were a major influence in defining the '60s, were made famous by such groups as Peter, Paul and Mary, and the Byrds, as well as by himself.

Dylan kicked off his career by writing folk-song protests, then

moved to rock 'n roll before leaning toward country and Christian versions. Dylan is so influential that many rock artists' career paths parallel his.

Dylan joins Alabama, the Chicago Symphony Orchestra, Ricky Van Shelton, T. G. Sheppard, Mike and The Mechanics, The Outfield, Expose, The Judds, Michael Damian, and George Thorogood and The Delaware Destroyers in highlighting the 1989 Grandstand Line-up. The 30th Anniversary of Rock 'n Roll will reunite musical legends of the '50s on the Fair's final night.

A new family-oriented show featuring Jim Varney as "Ernest Comes to the Fair," on opening day at 1 p.m., will kick off the long list of entertainment. The show is free of charge.

The Truck and Tractor Pull schedule has been changed to give people unable to attend the usual daytime event the opportunity to enjoy the competition on the Fair's first evening at 6:30 p.m.

Tickets for all concerts and motorsports events may be purchased at the Grandstand Ticket Office or ordered by mail from the Illinois State Fair Ticket Office, P.O. Box 576, Springfield, Ill. 62705.

Skating contest announced

A series of street ramps and transition walls will fill the Coca-Cola Arena on Sunday, Aug. 20, for the 1989 Illinois State Fair's Skateboard Contest.

Registration of STREET JAM/SKATEBOARD 6 is set for 10 a.m., Aug. 20, with the contest following at 11 a.m. promptly.

The contest, free to spectators,

will feature live music to entertain the audience between stunts.

Judging is based on difficulty, variety, number of completions and overall performance. The panel of judges is made up of professional skateboarders from the Midwest region and local skateboard experts.

1989 Illinois State Fair Grandstand Entertainers

Aug. 10 "Ernest comes to the Fair"	Free
Starring Jim Varney—1 p.m.	
Aug. 11 Alabama with Jo-ELSONNIER	\$12, \$10, \$8
Aug. 12 The Judds	\$8
Aug. 13 Drum and Bugle Corps	Free
Aug. 14 Michael Damian and Expose	\$8
Aug. 15 Mike & The Mechanics with The Outfield	\$8
Aug. 16 Chicago Symphony Orchestra	Free
Aug. 17 George Thorogood	\$12, \$10, \$8
Aug. 18 Folgers/Citrus Hill Wakin' Up Concert	\$8
Ricky Van Shelton with T. G. Sheppard*	
Aug. 19 Bob Dylan	\$12
Aug. 20 30th Anniversary of Rock 'n Roll	\$8

AUTO RACES

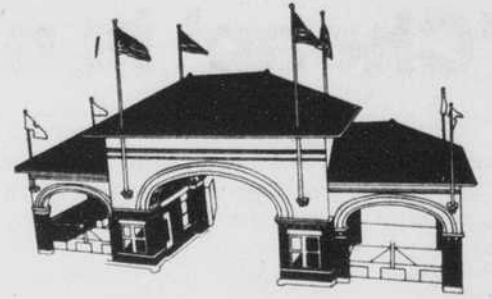
Aug. 19 USAC Silver Crown Series	\$8, \$7, \$6
Dirt Champs	
Aug. 20 ARCA Super Car Series	\$8, \$7, \$6
USAC Mighty Midgets	
Time trials are slated for 11 a.m.	
Race immediately follows.	

TRACTOR PULL

Aug. 10 6:30 p.m.	\$5
Aug. 11 10:30 a.m.	\$5
Aug. 12 10:30 a.m.	\$5

*Bring or mail any empty container of a Folgers or Citrus Hill product, as proof of purchase, with your order and receive \$3 off the ticket price, one ticket per proof of purchase while tickets last.

ILLINOIS STATE FAIR



State Fair runs Aug. 10-20

All elementary, junior or high school music groups are invited to participate in the 1989 Illinois State Fair School Music Contest. Any school in Illinois may enter its band, orchestra, chorus or stage band.

The competition will be held Aug. 10-14 in the Twilight Ballroom. There is no entry fee.

Competition will be divided into eight classes. Five classes will be based on high school enrollment. There will also be classes for junior high schools, and high school and junior high stage bands.

Class AA — Schools with an enrollment of 1601 or over

Class A — Schools with an enrollment of 801 to 1600

Class B — Schools with an enrollment of 351 to 800

Class C — Schools with an enrollment of 191 to 350

Class D — Schools with an enrollment of 191 or under

High School Stage Band Class — Any high school

Junior High Stage Band Class — Any junior high school

Elementary and junior high school performers may participate with their high school, or enter as a separate organization. There will be a non-competitive classification for high school and junior high school groups that wish to perform without entering the competition.

Organizations will be judged based on their 30-minute performance and rated either I, II or III. Organizations rate I or II will receive an engraved wall plaque. The outstanding group in each classification will be awarded a Special Trophy, with the Grand Trophy being awarded to the outstanding musical group of the entire contest.

Interested schools should contact the General Entry Department, Illinois State Fair, P.O. Box 576, Springfield, Ill. 62705, or call 217/782-0786.

Twirling Batons

Twirling batons will spin through the air under the control of charming young men and ladies competing in the 1989 Illinois State Fair's Baton Contest.

The Baton Contest will offer solo and team competition open to boys and girls ranging in age from two to over-20. The batons will begin flying at 9 a.m. on Sunday, Aug. 13 at the Twilight Ballroom. Highlighting the first part of the day will be the twirl-off competition between solo division winners for the 1990 Governor's Baton Host/Hostess.

Following the solo contest, dance twirl teams, parade corps, and half-time routines will test their baton talents against each other in team competitions.

The contests will follow the 1988 National Baton Twirling Association rules. All teams must have four or more members. NBTA judges and score sheets will be used for all phases of the contest.

Entries must be postmarked by July 21. For a complete list of rules and entry forms, contact the Illinois State Fair, Special Events, P.O. Box 576, Illinois State Fairgrounds, Springfield, Ill. 62705 or call (217) 524-5125.

Ragtime pianists

Ragtime pianists will take the stage to demonstrate their musical talent in keyboard competition during the 1989 Illinois State Fair's Olde Tyme Piano Playing Contest.

Sponsored by Byerly Music Co., the contest will be held at the Lincoln Stage on Monday, Aug. 14, at 2 p.m.

Contestants may perform any tune of their choice, provided it is an American selection written prior to 1930 and has a maximum playing time of three minutes. Competitors may enter either the adult division, with a top prize of \$200, or the 16-year-old and under division, with a rosette as top prize.

Judging will be based on creativity, authenticity, taste and execution.

Entries must be postmarked by July 21. For more information or an entry form, write the Illinois State Fair, Special Events, P.O. Box 576, Springfield, Ill. 62705, or call (217) 524-6053.

Volleyball Tourney

If rolling around in the mud is your idea of clean healthy fun, then the 1989 Illinois State Fair's Mud Volleyball Tournament is where you want to be on Sunday, Aug. 13, 1989.

The annual melee in the mud will begin at 10 a.m., on the infield of the World's Fastest One-Mile Dirt Track at the Grandstand.

The co-ed teams will be allowed to have only nine players on the court at any given time, but teams may consist of a maximum of 12 players. There must be five males and four females on the court at all times. The participants must be at least 18 years old.

Backyard volleyball rules will apply with no overhand serves allowed and serving to alternate between males and females. The three-game matches will consist of 15 points or 15-minute games, whichever comes first. The winner must be at least two points ahead.

A maximum of 32 teams will be allowed to enter the single elimination tournament. Applications will be taken on a first-come-first-serve basis and must be returned postmarked no later than midnight

July 21.

For more information or an entry form, contact the Illinois State Fair, Special Events, P.O. Box 576, Springfield, Ill. 62705 or call (217) 324-7501.

The 1989 Illinois State Fair runs Aug. 10-20.

Country Western

Country western dancers are invited to demonstrate their toe-tapping talents at the 1989 Illinois State Fair's Country Western Dance Contest.

The dance competition begins at 7 p.m. on Saturday, Aug. 19, at the Lincoln Stage. The contest is divided into two classes: Two-Step Dance and Shuffle. The Shuffle division includes any three-step, shuffle, or polka pattern. Swing steps will not be permitted in the Two-Step division. Contestants must dance to all music selected.

Country western appearance is encouraged for all dance contestants.

Judging will be based on content, execution, style and appearance. Plaques and \$350 in cash premiums will be awarded.

Dancers are requested to register by July 21, but entries will be accepted on the day of the contest.

For a complete list of rules or entry forms, contact Illinois State Fair, Special Events, P.O. Box 576, Illinois State Fairgrounds, Springfield, Ill. 62705, or call (217) 785-3482.

Pom Pon contest

Approximately 50 squads from across the state will seize the stage and perform their routines with pep and precision at the 1989 Illinois State Fair's popular cheer-leading and pom pon contests on Saturday, Aug. 19.

As in previous years, the cheer-leading competition will be held in the Coca-Cola Arena at 9 a.m. with the pom pon contest immediately following.

Trophies and \$600 in premiums will be awarded with the top two squads in each division competing for the grand championship. The Illinois State Fair Grand Champion Traveling Cheerleading Trophy will be awarded to the winning school for the 1989-90 school year.

The pom pon contest will also be divided into two categories by squad size. The divisions will be squads sized 16-and-under and squads sized 17-and-over. The judging will be based on appearance, enthusiasm, timing and rhythm, motions and difficulty. Trophies and \$600 in premiums will be awarded.

Entries for the contests must be postmarked no later than midnight, July 21.

FEATURES

'Cheap' is not always safe

Everyone loves a good buy; and to some, garage sales are the equivalent of a bargain hunters heaven. Summertime garage sales are hot events which offer inexpensive treasures for everyone, including children.

However, cheap doesn't always mean safe. John Shutske, a safety professional with the Country Companies, an insurance and investment group, advises shopping carefully at garage sales. "You can't put a price on an injury due to an unsafe purchase," he says.

Among the most popular items at garage sales are infant furniture, toys and clothing. "Yet they can be among the more dangerous items a shopper can buy," states Shutske.

If you're shopping for a crib, check the space between the slats on older cribs, he says. If the spaces are too wide, the infant could put his/her head through the slats and choke. It may be best to avoid older cribs completely, since they may not meet strict safety standards.

Check fabrics for "non-flammable," "flame-retardant" or "flame-resistant" labels, when you are purchasing children's clothing, Shutske advises. Other labels to look for are "washable" and "hygienic materials" notices on stuffed toys and dolls.

Check toys for sharp edges and exposed nails, points, screws, pins or toys that break easily. Loose

parts that cover sharp metal or plastic can also lead to injury. These toy "bargains" are ones which should be avoided.

Parents should check used toys for possible hazards. Examine dolls, stuffed animals and other soft toys for rigid interior frames that can poke through the covering. Through wear and tear, these items can be dangerous. Also, check to be sure that attached "eyes" won't come off and possibly choke an infant.

When buying toys, look for the manufacturer's suggested age range. A toy that is safe for an 8-year-old, could kill a 2-year-old. Examine the toy or game yourself. It may still have small parts that a child could swallow.

AVOID ELECTRICAL appliances that have grounding plugs (the third prong) snapped off. The item may still work, but could be too dangerous to use.

Oftentimes, the wiring on appliances may wear out because of everyday use or mistreatment. It is a good idea to carefully scan these wires for fraying which can cause short outs or possible fires.

Use caution when purchasing older shower or storm doors. They may lack safety glazing that is now required.

"Garage-Sale shoppers should be safety wise and penny smart," adds Shutske.



Staff Sgt. Michael Harter, an instructor in the 3340th Technical Training Group's Fire Protection Division, shows his son, Airman Stacey Harter, how to don a breathing apparatus mask. Airman Harter graduated recently from the Basic Fire Protection course at Chanute, where students are taught such things as crash fire fighting, structural fire fighting and first aid. The second generation Air Force Firefighter has been assigned to K.I. Sawyer Air Force Base, Mich.

U.S.A.F. photo by LARRY FARLOW

Pesticide exposures investigated in study

One in 10 farmers recently reported they thought they experienced temporary symptoms of ill health due to handling pesticides. The survey was conducted by the University of Illinois Cooperative Extension Service.

Dermal (through the skin) exposure to pesticides is a common problem among those who handle pesticides. It can be a subtle and sometimes serious problem if precautions are not taken.

The severity or risk of poisoning by dermal exposure depends on a number of factors. Among these are: dermal toxicity of the material, rate of absorption through the skin, size of the skin area contaminated and length of time the material is in contact with the skin.

Studies show rates of absorption differ for specific parts of the body. For example, the scrotal area will take up pesticides nearly 12 times faster than the forearm. The scalp, forehead and ear canal have 3, 4 and 5 times greater uptake, respectively, compared to the fore-

arm. Oil-based materials generally pass through the skin barrier more rapidly than water-based pesticides. It makes sense. The more tender the skin, the greater the chance that pesticides may penetrate the surface.

To prevent dermal exposure during mixing, loading and applying pesticides, users should first carefully read labels and be familiar with the products they use.

It is a good idea to keep the product label with you at all times when handling a pesticide product. Many labels contain instructions for first aid treatments. Also, the label may be helpful if an emergency requires a physician's care.

Some general precautions to avoid dermal exposure:

Wear all the protective equipment the label advises while handling or applying chemicals. The most common items are headgear, goggles, coveralls and rubber gloves, aprons and boots. At a bare minimum wear long pants, a shirt and shoes.

Information on armed holdup suspect sought in connection with robbery

This week's Crimestoppers is seeking information on an armed robbery which occurred on July 10 at Heartland Federal Savings and Loan, 601 S. Vine Street, Urbana.

At 1 p.m., a white male suspect, armed with a silver hand gun, entered the savings and loan through the south doors. The suspect went behind the counter and ordered the tellers to empty the cash drawers into a paper sack. After obtaining the money, he told the employees to walk out the south doors. The suspect then fled by walking north bound across the street between 206 and 208 E. California. It is believed the suspect got into a car parked behind 206 E. California. The suspect vehicle then drove west bound in

the alley to Broadway Avenue.

The suspect is a white male in his 30's, 5'10" tall, 220-250 lbs. The suspect's blue *Seattle Mariners* baseball cap and light blue extra large, short sleeve golf shirt were recovered in the area.

The FBI and Urbana Police Investigators are requesting any information regarding this armed robbery.

Crimestoppers will pay a reward for information leading to the arrest of the person responsible for this crime. If you have any information, call 373-TIPS. Callers do not have to give their names. Cash rewards are also paid for information on other felony crimes or fugitives in the Champaign County area.

Garage Sale Classifieds —

Call 351-2216

The Image Index[®] For Men

Test Your Potential for Getting Ahead.

The following test is based on the probability of making the best first impression on the greatest number of people in business and professional situations. To take the test, simply circle the number opposite the entry that *best* describes you. Then, total up your score according to the directions below, and gauge your Image Index.

SHIRTS

1. Long-sleeved, all-cotton, white, striped or pastel.
2. Button-down oxford, any color.
3. Short-sleeved, or anything that is wash and wear.

TIES

1. All silk with a subtle pattern or stripe.
2. Knit ties.
3. Clip-ons.

SUITS

1. Traditional single-breasted, navy or grey pinstriped, expertly tailored and well-pressed.
2. Designer double-breasted, with bold patterns or weave, molded to body.
3. Prefer sports jacket and slacks.

SHOES

1. Classic dress shoes that tie, always freshly shined.
2. Usually casual, rarely shined.
3. Don't think about shining shoes.

SOCKS

1. Mid or over-the-calf, brown, navy or black.
2. Mid or over-the-calf, textured or patterned.
3. Ankle length, dress or casual.

FACE

1. Always clean-shaven.
2. Have a well-groomed mustache or beard.
3. Not always clean-shaven.

HAIR

1. Regularly cut in a conservative style.
2. Sometimes need a haircut.
3. Always worn in the latest avant-garde style.

NAILS

1. Groom at least once a week.
2. Clip and clean nails occasionally.
3. Bite regularly.

JEWELRY

1. Classic style watch, leather or metal band.
2. Wear a sporty watch.
3. Don't usually wear a watch.

HANDSHAKE

1. Firm with both men and women.
2. Firm with men and limp with women.
3. Squeeze hard to show superiority.

EYE CONTACT

1. Make frequent eye contact.
2. Not comfortable looking at someone often.
3. Normally look around the room or at feet.

POSTURE

1. Usually stand and sit erectly.
2. Don't pay much attention.
3. Tend to slouch.

How to Score Your Image Index: Give yourself 6 points for every #1 answer, 3 points for every #2 answer and 0 points for every #3 answer. If your total score is:

- 54-72** Congratulations, you're on your way.
- 36-53** You're on the right track, but have some work to do.
- 18-35** Careful, you may be sabotaging your chances of getting ahead. There's still hope, though.
- 0-17** You've got a real problem. Without immediate action, your chances of making a good first impression are virtually nil.

The Image Index was developed in conjunction with Kaufman Professional Image Consultants of Philadelphia. © 1988, KWI Brands USA All Rights Reserved.

CLASSIFIEDS

AUTOMOBILES

IT'S THE LAW - AUTO INSURANCE
Pay as you drive, monthly payments.
BRYA INSURANCE
356-8321
at Zayre's

FOR SALE

Bowling ball and bag: \$10.00. Unique skateboard: \$10.00. 120 watt receiver: \$150.00. 12 Volt D.C. Power Supply: \$15.00. Base DB Antenna: \$40.00. Schwinn Sierra - Broken: \$25.00. Audio-

phile Speakers and Turntable — call. All prices O.B.O. 351-1493.

MALE Parkland Nurse Uniform. Lg. size. Excellent condition. Rarely used. Or white nurse uniform. \$25 or best offer. Brian. (217) 398-3452.

OUT THERE

The Career Planning and Placement Center — A-163
(217) 351-2536

The Career Planning and Placement Center provides this bulletin as a free service to the students of Parkland College.

The OUT THERE is a weekly jobs bulletin which:

—REPORTS the new part-time, full-time and on-campus JOBS listed each week in the Career Planning and Placement Center

—ANNOUNCES EMPLOYMENT RECRUITERS coming to Parkland to interview students nearing graduation

—INFORMS students regarding JOB TRENDS.

SUPPLY/DEMAND ACCOUNTING GRADS

For the third consecutive year, job prospects for accounting graduates are brighter than ever. According to a recent survey of 366 public accounting firms and 772 colleges conducted by the American Institute of Certified Public Accountants, the number of accounting graduates decreased 4 percent in 1987-88, but demand climbed 3 percent. The AICPA predicts that demand for accounting employees in 1988-89 will increase another 1 percent.

The survey also found that women make up the majority of new accounting graduates — 52 percent — and that public accounting firms are hiring more non-accounting majors. In 1987-88, graduates with non-accounting majors constituted 17.7 percent of the these firms' recruits. The AICPA projects that in 1988-89, 22 percent of new graduates will hold non-accounting degrees.

Each listing is assigned a code number. Please contact the Career Planning and Placement Center for the name of the employer, phone number, address and additional information.

The Career Planning and Placement Center assures all persons freedom from discrimination based on race, color, creed, religion, ancestry, national origin or sex. The Career Planning and Placement Center supports laws related to equal opportunity, Title IX and Section 504 for the handicapped. Where distinction is made on the basis of age or sex, the employer has advised this office that this distinction is a bona fide occupational requirement.

NEW PART-TIME JOBS

P7-1—Yardwork, Cleaning, Pruning, Painting — Intermittent, part-time work. \$5 hr. Urbana, IL.

P7-2—Cental Hygienist — Start mid-July. Mondays, Tuesday and Fridays. Springfield, Ill.

P7-3—CNA/Home Care — 8:00-10:30, Monday thru Sunday. \$3.50 hr. Urbana, IL.

P7-4—Telemarketer — Immediate full- and part-time positions available on all bus lines. Setting appointments for major companies across the nation. Good phone technique. 1-4:30 or 5-8 p.m., Monday thru Friday. \$3.50-\$4.00 hr. Champaign, IL.

P7-7—After-School Babysitter — Dependable college student with trans-

portation to pick up child, age 8. Begin work Aug. 28 thru early June, 1990. 2:30-5:30 p.m., Monday thru Friday. \$50 wk. Champaign, IL.

P7-8—LPN — This is a part-time nursing position on an Alzheimer's unit. Work three to four hours five evenings a week. Urbana, IL.

P7-9—Part-Time Teller — Receive and pay checking and savings deposits and withdrawals; sell travelers checks, money orders, EE bonds, cross-sell bank services. Previous cash, CRT and calculator experience preferred. Typing 30-35 wpm. Good customer relations skills. Monday, Wednesday, Friday 10:30-4:30; and 1:00-2:00, Saturdays. \$4.50 and up. Champaign, IL.

P7-10—Child Sitter — No house work or meal preparation. Able to supervise after-school play, activities, for one five-year-old boy. Sitting experience preferred. Must like children and must be responsible. Start Aug. 28, 1989. 2:30-5:30, Monday thru Friday. \$3 hr. Champaign, IL.

NEW ON-CAMPUS JOBS

OC-77—Various — Delivery of incoming freight throughout the college. Parkland.

SUMMER JOBS

There are still a number of summer jobs available. See the Placement Center for details.

Hear ye, hear ye . . .

In just a few weeks, the Twin Cities will welcome thousands of students back — Students who:

- Rent apartments
- Eat out
- Drive to school
- Read daily papers
- Watch TV
- Buy class supplies
- Go to the movies
- Write checks
- Play golf
- Buy textbooks
- Use the telephone
- Call long distance
- Buy groceries
- Use computers

Advertise in our New Student Edition Aug. 28, 1989

Call 351-2216 for details!

HELP WANTED

PLAY A VITAL ROLE in Illinois Center for Citizen Involvement's campaign for consumer democracy. Join our field organizing staff now, and work on local, state, and federal issues at a grassroots level. Hours: M-F 2-10. Starting: \$195 plus 25% commission weekly. Interviews daily. 352-6533. EOE. Internships available.

THE CHAMPAIGN PARK DISTRICT is now taking applications for the afternoon Middle School Program which begins Sept. 4. Instructors needed for photography, karate, cooking, cheerleading/pon-poms, babysitting, first aid, tennis, arts and crafts, acting/drama, and intramural sports. Applications available at the Bresnan Meeting Center, 706 Kenwood Rd. For more information, contact the Director, Middle School Program, at 398-2584. Application deadline is July 29.

POSITION NOTICE Part-Time

The Champaign Park District is now taking applications for the 1989-90 school year Friendship Club Recreation Leader. Leaders are responsible for programming recreational activities such as group games, arts and crafts, and field trips for school-age children. Program hours are Monday-Friday, 2:00-5:45 p.m. Qualified applicants must have completed at least 6 hours of college credit in child development education or recreation and must be at least 19 years old. Applications are available Monday-Friday, 8 a.m.-5 p.m. at the Bresnan Meeting Center, 706 Kenwood Rd., Champaign. Application deadline is July 31. For more information, contact the Director at 398-2584.

FOR RENT

ROOMMATES WANTED— No pets/smoking. Washer/dryer, A/C, microwave 2-1/2 baths. Fully carpeted. Fantastic price. Across from Parkland! Furnished. \$145-\$165. 359-6101 or 337-5215.

Are You Pregnant or think you are?

Birthright is there to help you.

351-7744
OR
24-hour line
1-800-848-LOVE

PARKLAND STUDENTS

Large One and Two Bedroom Apts. Big Enough for Sharing Heat, Hot and Col Water, Satellite Television Service, Trash Removal, and Sewage Charge PAID! **YOU Pocket the Savings!**

- Student Leases
- Lots of Closet Space
- Frost-free GE Refrigerator
- GE range w/ Self-cleaning Oven
- FREE Well Lighted Parking
- Pool, Picnic, and BBQ Facilities
- Basketball and Tennis Courts
- Laundry Facilities, Each Bldg.

Walk to Shopping, Theaters, Restaurants 1.5 Miles to Parkland

Available NOW or Pre-lease for Fall to Insure Your choice of Size and Location!

Country Fair Apartments
2106 W. White St., Champaign
359-3713
"Free Bus Rides?"

Crossword Companion

1	2	3		4	5	6	7	8		9	10	11	
12				13						14			
15			16				17			18			
		19				20							
21	22				23				24		25	26	
27					28				29				
30			31					32				33	
34		35						36				37	
38						39				40			
			41							42			
44	45							46				47	48
49						50						52	
53						54						55	

ACROSS

1. Missile (abbr.)
4. Bed coverlet
9. Fish
12. Scary word
13. Above
14. Verb
15. Tent fabric
17. Many
19. Father
20. Town leader
21. Dash
23. Friend
24. Space agency (abbr.)
27. Reddish-brown colt
28. Follower
29. Under
30. River in Russia
31. Body
33. Louisiana (abbr.)
34. Better
36. Ungentlemanly
37. Hawaiian food
38. Three feet
39. High (music)
40. Rave
41. Amer. bird
43. Baseball stick
44. Admittance
46. Motion pictures
49. Hawaiian necklace
50. Entertain
52. Basketball hoop
53. Bog

DOWN

1. Alphabet (abbr., sing.)
2. Snake
3. Day of week
4. Quadrangle (slang)
5. Higher (pl.)
6. Innings pitched (abbr.)
7. Within the law
8. Shallow receptacle
9. Singing group
10. Rowing implement
11. Poem
16. Covered truck
18. Person alone
20. Handcuff
21. Black
22. Thin plate or layer
23. Cushion
25. Athenian poet
26. Wait for
28. Distant
29. Where one sleeps
31. Tree
32. Vessel to store liquids
35. Idiot
37. Exclusive right
39. Aware
40. Raced
42. Allows
43. Pieces
44. Mischievous child
45. Born
46. Curved wheel on rotating shaft
47. Males
48. Attention (abbr.)
51. Particular type of (Suffix)



Puzzle No. 169

SPORTS

Cooper announces new squad

**By Donnie Robinson
Staff Writer**

Head basketball coach Tom Cooper has announced the names of twelve players who have decided to attend Parkland in the fall.

Coach Cooper, who has only three returnees from last year's squad, is especially excited about this recruiting class. He feels that the defensive abilities of this group are much better compared to his teams in the past few years.

"Many of the guys we will have this year are exceptional defensive players," explains Cooper. "We've also recruited some fine passers and all-around ball handlers." Cooper also adds, "Even though we will be very inexperienced, we should still have a successful season."

One of the point guards coming in next year is 5'9" Dan Gold. Gold is a transfer student from North Park and a graduate from New Trier High School near Chicago.

Another point guard is Michael Travis out of Joliet Central. The 5'11" Travis is regarded by Cooper to be an "exceptional

defensive player who has great footspeed and is also a solid ball handler."

5'11" Jeremy Lord of Goshen, Ind. is also expected to play the off guard. Cooper says that "Jeremy is a smart player, who can shoot the three, and a nice ballhandler." Lord is one of five recruits who hails from the state of Indiana.

Another Hoosier is 6'1" Mickey McPherson from Gas City. The wiry guard was the 5th leading scorer in the state of Indiana last year, while shooting 45% from 3-point range.

Vance Edmundson, a graduate of North Davie High School, has decided to play for Parkland next year. The 6'4" Edmundson is described by Cooper as being a "good athlete, who is very versatile, and an excellent penetrator, which will bring an added dimension to the team."

Tony Penny out of Logansport, Ind., has committed to Parkland. The 6'5" Penny, who can play on the perimeter or in the post, "has a nice shooting touch," according to Cooper. He averaged double figures

in both points and rebounds in "one of the toughest leagues in Indiana."

"A smart and aggressive player, who is a good defender, and comes from a good basketball system," are the words Cooper uses to describe 6'4" 200 lb. Kevin Brown of Indianapolis. He will be used mainly in the post for the Cobras.

A 6'7" post player will play for Parkland next year. Eric McClennahan from Southeast High School in Springfield is described by Cooper as "a good rebounder and a good all-around defensive player."

Mike Keis of Elmhurst is another recruit named by Cooper. Keis, a York High School graduate, is a 6'6" 210 lb. post player. According to Cooper, Keis is a "power player, who likes to bang, but also has nice shot and can shoot the three pretty well."

A 6'6" graduate of Central Catholic High School in Bloomington will become a Cobra next year. Rich Hagerty will mainly contribute his rebounding and defensive skills to the squad.

Cooper has also announced that John

Alberts, a transfer student, will attend Parkland. The 6'2" Alberts is "a good 3-point shooter and makes good decisions on the floor." He is a graduate of Lincoln High School.

Cooper feels that next year's squad is very balanced in that they will be able to put points on the board and still be a good defensive team.

Defense and rebounding — Cooper thinks that how well his team executes these aspects will determine whether or not they can improve on last year's 4th place finish at the national tournament.

Sportswriter Donnie Robinson will return with our Aug. 28 New Student Edition with recruit information from other fall sports at Parkland College.

See that issue for Cobra sports schedules as well.

Have a nice break, and we'll see you on Aug. 28.

Dodds Park tribute set for local Olympians

**By Avis Eagleston-Barker
Staff Writer**

The Champaign Park District has announced a competition to develop a design for an area to recognize Olympic athletes from Champaign County.

The Recognition Area is to be constructed in Dodds Park directly northeast of Parkland College. The Park District is sponsoring the contest in cooperation with the Champaign-Urbana Section of the American Institute of Architects, and is looking for entries from artists and designers as well as architects and landscape artists.

The idea of developing an area to recognize local Olympians came about following the medal winning performance of Champaign's Bonnie Blair in the 1988 Winter Games. The idea was further reinforced by the performances that year of Sharon Hedrick, Robert Espeseth and Ann Cody-Morris in the Summer Olympics.

In announcing the contest, Park Commissioner Donald Bresnan said, "The park concept is to recognize those Champaign area persons who have earned the right to represent their country (USA) in the Olympic games since its inception . . ." He further stated, "We are not interested in who won what medal...everyone is recognized equally for earning the right to participate, whether or not they won a medal . . ."

The design challenge facing the competitors is to generate solutions for the Recognition Area that fit into the context of the park and

that are aesthetically beneficial, incorporate the Olympic logo and include space for at least thirty names with space made available for thirty more names in the future.

The winner will receive a \$2,000 award; the second place design award will be \$1,000 and the third place is to be \$500. The Park District will select a design consultant for the construction of the project from the award winners. Fifty thousand dollars will be provided by the Park District for project construction.

A local committee has developed a list of those Olympic competitors from Champaign County which includes: Mark Arrie, Bonnie Blair, Diane Bolin, Roger Capan, Ann Cody-Morris, 'Dike' Eddelman, Robert Espeseth, Abe Grossfeld, Muriel Grossfeld, Sharon Hedrick, Erik Henriksen, Diane Jerome, Don Laz, Linda Metheny, William Mulliken, Colleen Mulvihill, Frank Murphy, Harold Osborn, Bob Richards and Nancy Thies. The Park District is interested in receiving information concerning any Champaign County Olympians who may have been omitted from their list.

The design contest is open to any citizen or permanent resident of the United States who registers with the Competition Manager by September 15. Entries are due on November 15. Interested persons should contact the Champaign Park District at 398-2550 for additional information.

Get your copy of the Prospectus every week at one of these convenient off-campus locations:

- Osco's on Green
- Osco's at Market Place
- Jewel Food Stores
- Union Bus Station
- Amtrack Station
- Senior Citizen Center
- Champion Federal, Urbana
- University Inn
- Busey Banks in Urbana
- Mahomet IGA
- Mr. Steak, Urbana
- Burnham Hospital
- Mercy Hospital
- Carle Hospital
- County Market Stores
- Diana Food Stores
- Krannert Center
- Jerry's IGA Stores
- The Medicine Shoppe
- Bank of Illinois
- Walgreens
- Hancock's Fabrics
- Hooks Drug Store
- Eagle Food Stores
- G. D. Ritzy's
- der Wienerschnitzel
- First Federal Savings & Loan
- Super Cuts
- True Value Hardware
- Do Duds Laundry on Kirby
- Round Barn Laundry
- Original Pancake House
- Slot and Wing
- Parkland Follett's
- Catfish Place
- Marine Bank of Champaign
- Taffies
- Old Mill Pottery
- Baskin-Robbins
- Osco's at Country Fair
- Merle Norman's
- The Closet
- Country Fair Video
- Country Fair Mall
- Pizza World
- China Inn in Champaign
- Pyramid Paper
- Rantoul IGA
- Clip and Curl
- Court House
- Country Fair Optical
- Sunny Crest Mall
- Sunny Crest IGA
- Robeson's, Downtown
- Country Fair Optical
- Abbott's Florists
- The Wood Shed
- Ye Olde Donut Shoppe
- Art Floral
- C-U Nursing Centers
- Aunt Sonya's
- Village Inn Pizza
- All advertisers

The Prospectus thanks these businesses for making our newspaper available to the citizens of District 505

If your business is not listed here and you would like to have papers, please call 351-2216!

Do You Want VISA & MasterCard Credit Cards?

Now You can have two of the most recognized and accepted credit cards in the world... VISA® and MasterCard® credit cards... in your name! EVEN IF YOU ARE NEW IN CREDIT or HAVE BEEN TURNED DOWN BEFORE!

YES! I want VISA®/MasterCard® credit cards. Enclosed find \$15.00 which is 100% refundable if not approved immediately.

NAME _____

ADDRESS _____

CITY _____ STATE _____ ZIP _____

PHONE # _____

SOC. SECURITY # _____

SIGNATURE _____

MAIL THIS NO RISK COUPON TODAY!

Approval absolutely guaranteed in 30 days. If not approved, your \$15.00 is refunded. Your credit cards are waiting!