

Thanks to
Gary Dirks
who designed our
new nameplate

PROSPECTUS

Hardees — Best Eatin' All Around —to open on campus next week



Look inside for . . .

A review of the Cars
new "Panorama"
album on page 3.

A two-page photo
spread on last week's
"Fall-In"—pages 4-5.

Fast Freddy! His 1980
debut on page 8. Can
you outguess him?

A new weekly science
column by our own
star specialist Randy
Pregler. On page 6.

A look at this year's
Cobra golf squad—in-
experienced, but . . .
page 8.



Qualifications listed for Student Senate elections

by Larry Williams
Elections Board Chairperson

Parkland's student body will vote on Wednesday, Sept. 10, and Thursday, Sept. 11 from 10:00 a.m. to 2:00 p.m. and 6:00 p.m. to 8:00 p.m. to elect the following: Student Services Senator, Public Relations Senator, Campus Organizations Senator, Convocations Senator, Senator for Athletics and Intramurals, 3 Day Senators, 2 Evening Senators.

Job descriptions are available in the Activities Office (X153) or by phone (351-2264 or 351-2267). Candidates must be currently enrolled students. Senators must be enrolled in not less than six hours.

Campaigning

Campaigning is permitted on campus beginning Thursday, Sept. 4, at noon. Candidates may request instructor's permission to speak to classes.

Approval of Campaign Material

All campaign material must be approved by Election Board previous to distribution on campus. Materials may be left in the Activities Office and will be approved by the Board before 3:00 p.m. daily.

Elected to Office

A candidate must receive a plurality of votes cast for the position in order to be elected to office.

Name on Ballot

Candidate's name will appear alphabetically for each office on the ballot as written on the "Official Application" as submitted by the candidate. Any changes may be requested at the candidate's meeting.

Candidates Meeting

All candidates must be present at the organizational meeting on Thursday, Sept. 4, at 12:15 p.m. in X161.

Petition Deadline

Thursday, Sept. 4, at 12:30 p.m. in X161 is the deadline for petitions. Candidate who has submitted a completed petition by this date and time has met all requirements for the office will have their name on the official ballot. Others may be write-in candidates.

Polls

Polls will be located in the College Center. The polls will be operated by two poll workers assigned by the Election Board Chairman. Candidates, write-in candidates, campaign managers and supporters are prohibited from campaigning on the wooden floor surrounding the voting area.

Audit

An audit of the election must occur within six hours of the

following college day, Sept. 12. Any candidate requesting an audit should submit his/her request in writing to the Election Board Chairman within the stated time. Requests submitted after this period will not be honored.

Tallying Ballots

Ballots will be tallied immediately upon closing of the polls on Sept. 11. Limited area for tabulation requires that only members of the election board and candidates or their representative shall be permitted in the tally room.

Campaign Material

Posters and campaign materials are prohibited on any surface other than mounted bulletin boards, tack-strips, or wood posts (tacks or nails are not permitted on the wood posts).

Posters may not be placed on glass surfaces, doors, vending machines, floors, ceilings or walls.

Any materials not approved by the Election Board will be discarded immediately.

Posters may not be larger than 22 by 28 nor smaller than 8 by 10. Handouts may be smaller.

Poster board may be purchased in the Activities Office at 20 cents per sheet. Dittos may be

purchased at 10 cents per sheet. Dittos will be run off by the Student Government secretary only.

The sign machine will not be available for any posters for candidates.

A maximum of 15 posters will be allowed for each candidate.

All campaign materials will be removed and discarded by the college Thursday evening, Sept. 11, at 9 p.m.

Guidelines for Coverage

Each candidate is permitted free space in the Prospectus to present his/her position. The guidelines follow: Candidates for Senator Positions—five column inches (20 lines of 60 characters). The final deadline is Friday, Sept. 5, at noon in the Prospectus office (X155). Articles which are late will not be printed. Those articles which are too long will be edited by a staff member. The paper will be published Wednesday, Sept. 10, 1980 for this election.

Information Available

Applications, petitions and job descriptions may be obtained in the Activities Office (X153). If there are any questions, please feel free to call 351-2264 (Activities Office) or 351-2267 (Student Government office).

Letters to the Editors

Volleyball coach promises excitement

Hello...

Let me take this opportunity to invite you to our volleyball matches and support our efforts to become the best team in the state. Last year we finished 6th in the state and with the addition of several excellent athletes, we've hoped to improve even more.

We will compete against all the other teams that finished in the top 8 last year and in the St. Louis tournament at the end of the season, which will be our greatest challenge before the state tournament.

Come out and support us and we'll give you more excitement for your money than any other place in town.

See you there...
Randy Pregler
Volleyball Coach
Parkland College

Student government says thanks

Editors:

Sincere thanks from all of us at Student Government to you. We appreciate your support and participation that helped make Parkland's Activities Day a success. We hope you enjoyed "Fall-In" as much as we enjoyed presenting it.

The total of the contribution awarded to the American Cancer Society was \$160.

If the 1980-1981 Student Government members and officers can be of any assistance to you during the next year, please feel free to call us (room 160; extension 267)

Here's to a good year!
Thank you,
Pat Trimble, Vice President
Cynthia Vaughan, President
Larry Williams, Treasurer

**PREGNANT?
NEED HELP?
351-7744
(ANYTIME)
BIRTHRIGHT
101½ N. Neil
—
M-W-F 9-12
OFFICE HOURS**



Bank with Real Tellers At Our
MAIN BANK

7:00 a.m. to Midnight
7 Days a Week

**AMERICAN NATIONAL BANK
OF CHAMPAIGN**

Centennial Plaza Branch Kirby at Mattis
Main Bank Country Fair Shopping Center
Round Barn Facility Round Barn Centre

Champaign, Illinois 61820 • Phone 217/351-1600

Member FDIC

at krannert

The Playwrights' Season University Theatre 1980-81



Miller

A View from the Bridge

directed by Richard Lichte; Oct. 2-4, 8-12



Beckett

Waiting for Godot

directed by John Ahart; Oct. 30-Nov. 1, 5-9



Ibsen

The Lady from the Sea

directed by Burnet M. Hobgood; Feb. 26-28, Mar. 4-8



Shakespeare

A Midsummer Night's Dream

directed by David Knight; Apr. 1-5, 8-12

10% Discount with Season Tickets and Coupons
Public \$18.00 / Student \$14.40

25% Discount with Opening Night (Thursday) Season Ticket
Public \$15.00 / Student \$12.00

For further information, please write or visit the Krannert Center Ticket Office,
500 South Goodwin Avenue, Urbana, Illinois 61801.

Alender is new Entertainment Editor

My name is Scott Alender and I'm just glad to be here! It's going to be another exciting year for entertainment in Champaign-Urbana and it will be my job to tell you all about it. We already have two good shows at the Assembly Hall (The Kinks, Sept. 4 and Jackson Browne, Sept. 13) and one at The Auditorium (The Pretenders) and it's only the second week in school. There will be a lot of other things we will cover such as record, book, movie, and theater reviews, and we will also have features on local bands. If you would like to help out in any way please contact me or drop your review/article at the Prospectus Office in X155. I'm lazy anyway and don't want to have to do all the writing. See you later, I'm ramblin'.



Traffic was backed up this past week as road crews put the finishing touches on the construction at Bradley and Mattis Avenues.
Photo by Randy Pregler

The Cars "Panorama" lacks uniqueness of previous albums

by Scott Alender

The Cars initial adventure was riding atop the crest of the new wave. Even with the massive onslaught of new wave/punk music that all sounded the same, The Cars were unique. They scored with hits like "Just What I Needed" and "Best Friends Girl" from 'The Cars' and "Let's Go" from 'Candy-O.' Their trademark was punchy rhythms, layered vocals and intricate production by Roy Thomas Baker. Panorama carries on that foundation with a few minute's difference.

All the cuts on the LP are just OK. They catch your attention and hold it but do nothing to heighten your interest. The musical term is crescendo. Panorama lacks the power and layered vocals that we heard on 'The Cars' and 'Candy-O' but the production and delicate synthesizer makes up for it. The best cuts are "Gimme Some Slack," "Touch and Go" and the title cut. I didn't like it that much the first time I heard it but it grows on you. (Album made available by WPCD-FM)

College predicts record enrollment

Parkland College officials predict that the college's fall semester enrollment will exceed the 8,000 mark. As of Thursday, Aug. 28, a record-breaking 7,872 students had already enrolled for fall semester classes. Late registration continues at the college through Monday, Sept. 8.

Director of Admissions and Records, Jo Davis, said today, "There is no question that our enrollment will exceed 8,000 by the end of late registration." The number of students registering daily this fall has exceeded the numbers tallied last year at the same time. There is little doubt that this trend will continue during the remaining days of late registration.

Enrollment figures for the fall semester of 1979 were 7,201. The college's all-time record enrollment was set last spring when 7,444 students enrolled. In 1967 the college opened its doors in store-front buildings in downtown Champaign with 1,338 students.

PC Datebook

Wednesday, September 3 thru
Wednesday, September 10, 1980

Wednesday, September 3
11 am-1 pm—Hot Dog Sale, Ski Club, Snack Bar
12-1 pm—Women's Support Group, Room X150
1-4 and 7-9 pm—Movie M*A*S*H, Room C118

Thursday, September 4
11 am-1 pm—Chili Dog Sale—Circle K, Snack Bar

12-1 pm—Astronomy Club, Room M141
12-1 pm—Women's Basketball Team Meeting, Room X230
12-1 pm—SADHA, Room L158
12-1 pm—International Students Organization, Room X150
12-1 pm—PATH, Room M143
12-5 pm—English 100—Makeup, Room C118
12-1 pm—STUGO Meeting and Candidates Meeting, Room X161

Friday, September 5
1-5 pm—English 100 Makeup, Room C118

Saturday, September 6
8 am-12 pm—EMT Workshop (Farm Emergencies), Room L111

Tuesday, September 9
11 am-12 pm—Circle K Meeting, Room X227
11 am-12 pm—Ski Club Meeting, Room B133
11 am-12 pm—Sigma Theta Omega, Room B223
11 am-12 pm—German Club Meeting, Room C227

11 am-12 pm—Parkland Christian Fellowship, Room X220
12-1 pm—IOC Inter-Organizational Council, Room X150
12-1 pm—Prospectus Staff meeting, X155

Wednesday, September 10
12-1 pm—Women's Support Group, Room X150
7-10 pm—Women's Program, Room X117

This column is prepared by Rodney Keller, 79-80 Public Relations Senator, STUGO. Any dates to be added must be submitted by Friday, 8 a.m., in Room X159.

Tops for short hops



As easy to ride and park as a bicycle... and gets over 100 miles per gallon. With low-maintenance features like exclusive Yamaha Shaft Drive. See it soon!

SPORTLAND YAMAHA

1602 N. Lincoln
Lincoln at Bradley
Urbana,
328-5005
Yamahopper

\$449⁰⁰

NAUTILUS OF CHAMPAIGN

THIS WEEK—

**Parkland College Students,
Faculty and Staff**

1 semester \$55 (reg. \$ 75)
2 semesters \$90 (reg. \$125)
(ID REQUIRED)

- ★ The Most Advanced Equipment Available
- ★ For Women and Men
- ★ Look, feel more fit
- ★ Just 30 minutes, 3 times a week

Call for FREE Trial Workout **359-4353**
1719 W. Bradley Across from Kraft on Bradley

New recruits

Coach Jim Reed has added five players to his 1981 team. They are as follows: Marty Zamora — Pitcher — Blue Island Eisenhower, Dan Podbelsek — outfielder — New Holland-Middleton, Gary Rankin — outfielder — New Holland-Middleton, Mike Taybor — pitcher — Effingham, Steve Burden — pitcher — Champaign Centennial.

**1970 MUSTANG
CLEAN, MECHANIC-
OWNED. \$895. WELL
WORTH IT. 344-8938.**

You can remove unwanted hair
PERMANENTLY!

ELECTROLYSIS
(SINCE 1968)

Call **367-7135**
to make an appointment for a
FREE consultation

Now offering Evening &
Saturday Hours

☆
Lois Campbell
Janette Barnes
Electrolysis Specialists

Responsible, outgoing
athletic type to work
for
NAUTILUS
of Champaign

See Dave



Offering beautiful lingerie
from Lily of France,
Vassarette, Christian Dior,
and Glydons of California.

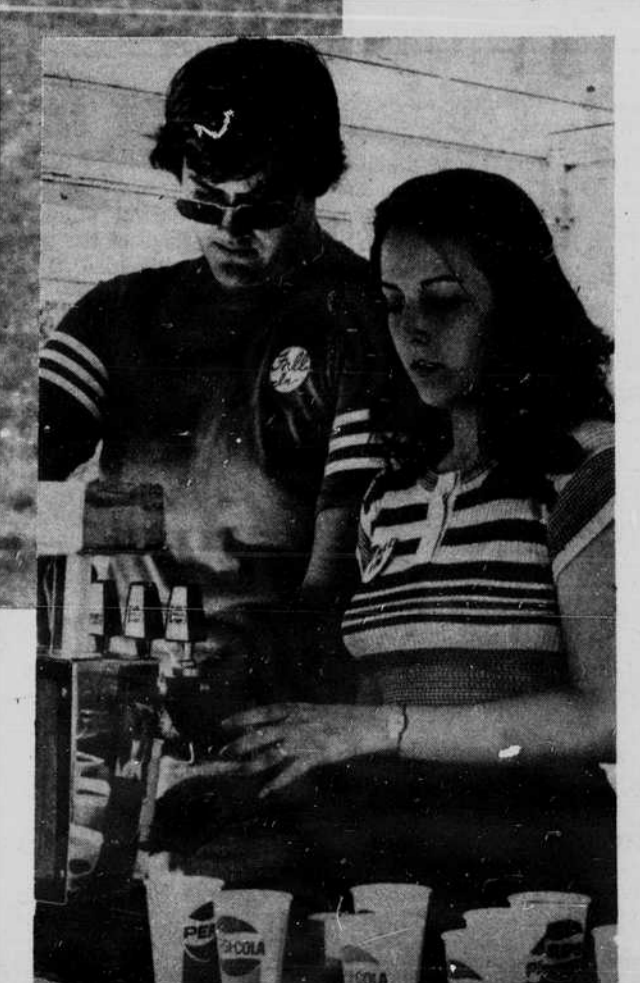
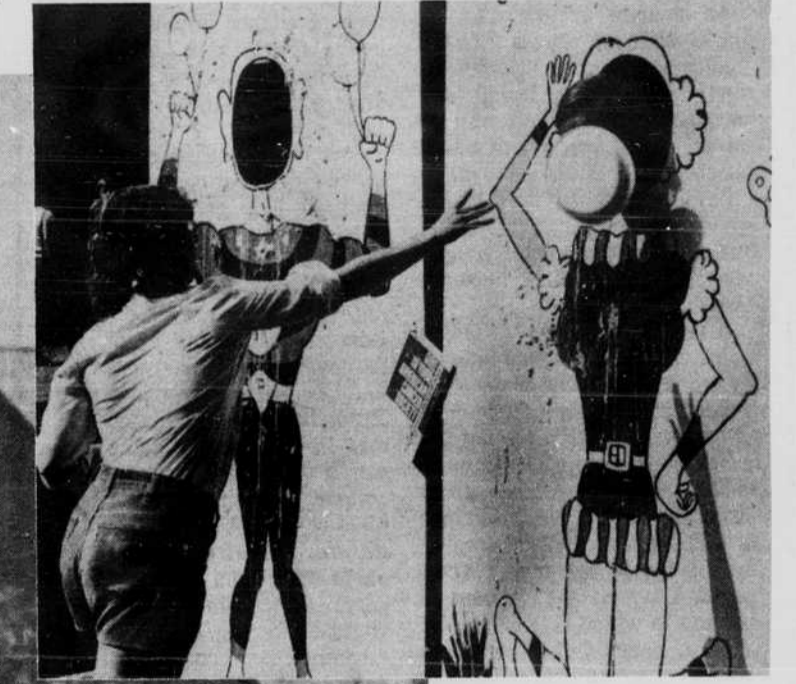
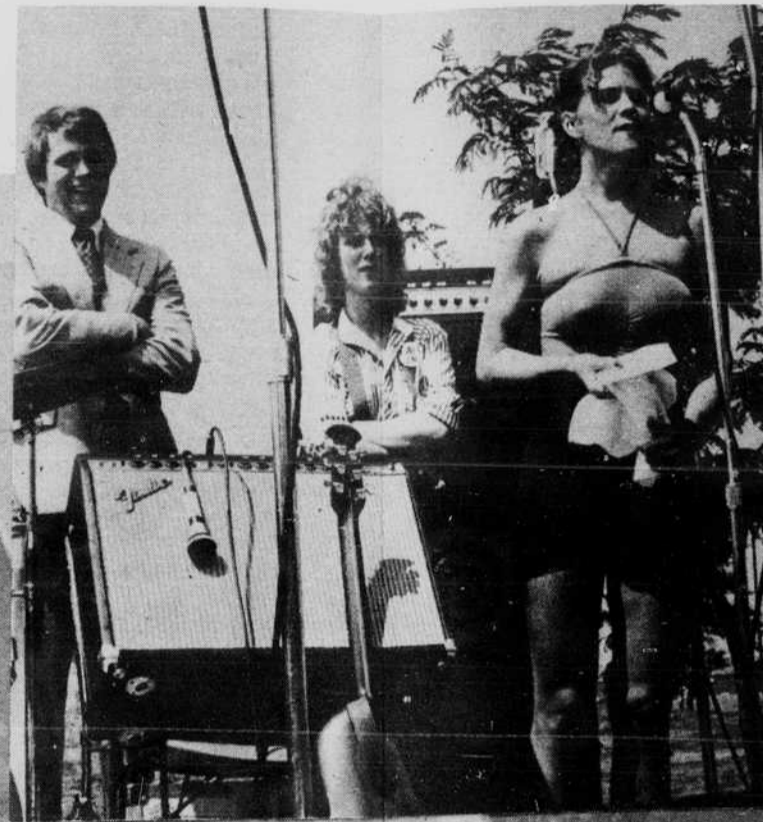
Bring in this ad for
10% OFF
ANY PURCHASE
(Expiration Date—Sept. 10, 1980)

629 E. Green 367-5245
"Behind the Yellow Door"



Fall Routine

"Falls Into" Place



by Mark Sterkel

Most of Parkland's students, faculty and staff fell out of routine by joining in the festivities of Tuesday's Student Government sponsored "Fall In." And festive it was. From 10:00 until 1:00, music, frisbees, eggs, gaiety and good spirit filled the air on the west side of campus. Students found pleasure in creaming and dunking their favorite and least favorite instructors and administrators. The "Flatland Band" played country rock that set a relaxed atmosphere to accompany the day's events. Becky Murphy and Scott Miller were two of the egg toss winners who turned their scrambled eggs into chicken dinners. Representative of the turn-out was the 1,200

government sold, a complete sell out. And all the fun had a cause to support; the American Cancer Society received \$160 from the day's donations.

Dick Karch, assistant dean of activities felt that this Activities Day had been the most successful since the first one was held in 1974. Participation by both students and faculty has been phenomenal in making "Fall In" a very successful and pleasurable experience for everyone. And for everyone who enjoyed it, much appreciation should go to Pat Trimble, Larry Williams, and Cynthia Vaughan for all the hard work and long hours that they spent working and planning to make this Activities Day as successful as it was.

(Clockwise from top left) Bob Abbhuel gets dumped; Pat Trimble and Cynthia Vaughan introduce American Cancer Society representative Terry S. Vaughan creams Jim Coates; Lisa Huckleberry and Larry Williams help with concessions; Flatland Band plays a tune; and Bob Dover cracks an egg.

(Photos by Mark Sterkel)



Science You Can See

When is an eclipse not an eclipse?

by Randy Pregler

How many of you would believe me if I told you there was an eclipse of the moon a week ago Monday night?? That's what I thought. Well, there was, but unless you knew it was happening and knew what to look for, you would not have noticed any difference.

An eclipse occurs when a planet or moon moves into the shadow of another planet or moon. We will limit our discussion to the earth and its moon for now, but this phenomenon occurs in many other places in the solar system. And the earth-moon system provides some unique views that are found nowhere else that we know of.

If the sun were just a single point of light, the shadow cast by any body orbiting it would be a very simple expanding cone of darkness. But this is not the case. The sun is, after all, quite large, and it occupies a good-sized area in our sky. Because of this, the shadow of the earth or the moon has two distinct parts. There is a dark central portion in which no part of the sun's surface can be seen. This is called the "umbra"; from the Latin meaning "shadow". Surrounding the umbra is a larger area in which part, but not all, of the sun can be seen. This is called the "penumbra"; also from the Latin, meaning "almost shadow".

During an eclipse of the sun, some areas on the earth are able to see what is called a total eclipse. This is where the umbra of the moon touches the earth and the sun is completely covered. All around this small area is a larger area in which a partial eclipse is seen. This is the area where the penumbra of the moon touches the earth, so part, but not all of the sun is covered. And, because of the moon's relatively small size, some parts of the earth see no eclipse at all.

If we were on the moon during an eclipse of the moon, we would see a very similar sight; the sun would either partially or

completely be covered. But, because the earth is much larger and casts a larger shadow than the moon, it would be possible for the entire moon to be in the penumbra of the earth so that no part of the moon saw a total eclipse, but all parts saw a partial one. This kind of eclipse is called, when seen from the earth, a "penumbra eclipse". This is what occurred this past Monday night.

Penumbral eclipses can be quite different from one another. The penumbra itself gets darker as you get closer to the umbra, because more and more of the sun is covered. The outer portions can be quite faint. Last Monday night, the moon only partially entered the outer region of the penumbra. If you had been on the moon at this time in some place you would have seen a slight partial eclipse, and other places would have experienced no eclipse at all. As seen from the earth, about 60 percent of the moon's surface experienced a very slight darkening, while the rest remained as bright as ever. And, unless you were accustomed to seeing the moon at its full brilliance, any slight shading would have gone unnoticed.

If you missed this, admittedly slight, passing of the earth's shadow this time, don't despair. Since the moon is now past full, the sky will be dark for a longer time each night before the moon rises. So get out and look at a really dark sky some time. The Milky Way is high over head and there are several bright stars to attract your attention. And if you are an early morning person, Venus is high in the morning sky along with some of the constellations that are in the evening sky during the winter. You can save yourself a lot of frozen toes by taking a look at them now while the weather is more agreeable. You can see a lot without any fancy equipment, so let your eyes do the wandering.

P.S. If you are an early riser, on Friday morning, about two hours before sunrise, Venus and the moon will be very close to each other in the eastern sky. This close grouping of two bodies is called a conjunction. The moon passes fairly near each of the visible planets as it moves through the sky, but close passages like this one are less frequent and much more beautiful.

Acct. students learn in lab

Accounting students will be able to receive assistance from the Learning Lab in a number of ways. ACC 101 students are invited to attend group study sessions from 9-10 a.m. on Wednesdays and ACC 117 students will have study sessions from 9-10 a.m. each Monday. Sessions will begin the

week of September 8 and meet in B117.

All accounting students may take advantage of the accounting assistance provided by student assistance, caramates, cassettes and PLATO. For further information walk in to the Lab (C151 or call Jane Powell (351-2441).



J.D.'s Pizza Place
1702 W. Bradley
Champaign, IL 61820

PHONE 351-1016

Jim Douglas—Owner

Hot & Cold Sandwiches — Pizza By The Slice

Center provides services

The Counseling department will continue to provide services to students on a walk-in basis in the Career Center. The Career Center is located in X163 next to the admissions desk. A counselor or counseling associate will be available from 8 a.m. - 8 p.m. Monday through Thursday and 8 a.m. - 5 p.m. on Friday.

The counselor will be able to answer general questions about courses, procedures, careers, and colleges.

The Career Center has a large variety of occupational information. If a student is interested in a career he can discover the type of work the job entails; educational requirements;

job outlook; and salary range. This information is available through several media-books, posters, films, and tapes.

A student who has not chosen a career area may work together with a counselor and the Career Center for Career exploration. The student should set up an appointment through the Counseling Center. The counselor can then familiarize the student with services which would be of assistance in narrowing his career interests.

Also, available in the Career Center are college catalogs from state colleges and universities and many out-of-state universities. Students planning to transfer after graduation from Parkland find this information useful in determining the college they will attend and in determining requirements for transfer.

Please feel free to visit and use the Career Center.

Yolanda Steffey
Counseling Associate

Newman Club may be reinstated

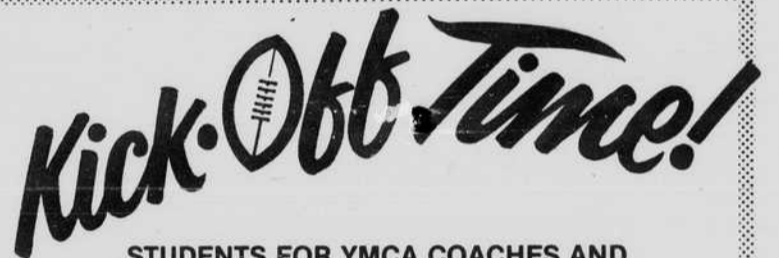
The Newman Club at Parkland College will be reinstated this year if enough interest is shown. The teachings of the Catholic Church and its significance in the world today will be presented to this organization through lectures, guest speakers, discussion, and social activities.

Are you a student who would like to participate, or a faculty member who would like to advise this group? Please sign up in the Student Activities office, X163, or call 351-2264 for more information.

CTEP program in effect

District 10 State Police, headquartered at Pesotum, Ill., will start working the Concentrated Traffic Enforcement Program (CTEP) again in September. CTEP patrols were started in September, 1977 and have been repeated from September thru December and May thru June each year since. The goal is to reduce the number and severity of traffic accidents at high risk locations through enforcement action and police visibility during days and times when past experience indicates most accident hazards exist. Captain Gordon J. Cleland, commander of District 10, advises the patrols are: in Vermilion County, I-74 from Indiana west to milepost 200; U.S. 150 from I-74 south to Edgar County, in Macon County, US 51 from the north city limits of Forsyth to the south city limits of Maroa. In Champaign County, I-57 from Pesotum north to the Leverett Road; I-74 from Illinois 47

east to U.S. 45; the Monticello road between I-57 and U.S. 45; and U.S. 45 from Monticello Road to Champaign city limits.



STUDENTS FOR YMCA COACHES AND LOCAL SCHOOL SPORTS PROGRAMS
FLAG FOOTBALL AND/OR BASKETBALL

MUST HAVE TWO AFTERNOONS PER WEEK FREE AND SATURDAY MORNINGS

\$3.25 hr. Call 356-2597

or apply at YMCA, 500 W. Church, Champaign

—For A Great Experience in Working with Youth—

GARDEN HILLS BAPTIST CHURCH

1601 BLOOMINGTON ROAD

Welcome to Champaign! Come join us for Sunday Bible Study (9:30), Morning Worship (10:30), and be our guests for lunch. For information or ride call **356-0891** or **351-7233**.

Sept. 7 is WELCOME STUDENTS DAY
at GARDEN HILLS BAPTIST CHURCH, 1601 Bloomington Road

Bible Study 9:30 Morning Worship 10:30

Be our guests for lunch following the service! For rides or information, call **356-0891** or **351-7233**

Lums After 8pm Club

Pick up your Lums Student ID at either Champaign-Urbana Restaurant and receive 10% off any purchase over \$2 after 8pm

1206 N. Mattis Ave.
(Corner of Mattis at Bradley)
CHAMPAIGN
Open til 11 pm Sun-Thurs
Fri & Sat til 12 midnight



701 W. University Ave.
(Across from Carle Clinic)
URBANA
Open until 12 pm Sun-Thurs
Fri & Sat til 1 am



Parkland Christian Fellowship group hears stance

The Parkland Christian Fellowship group met Tuesday (the 26th) at 11 a.m. in room X220 with approximately 40 attending.

This year's president, Ginee Bachman, opened with prayer. Her sister, Gee Gee, a U. of I. student, accompanied on guitar the group's singing of "This is the Day" and "I have decided to follow Jesus."

A short gabfest was held enabling members to get better acquainted with their closest neighbor. A game, with six in a circle and the indiscriminate grabbing of hands extended in the center, proceeded to the unknotted of the group without letting go. (This reporter's group never did get unknotted despite much stepping over and under hands, twisting around and back, etc.)

Ellen Harrington, an Intervarsity staff member, who works both with Parkland and ISU, Normal, spoke briefly to the group about the stance Intervarsity, an

interdenominational group, takes and backed it up with scriptures from the New Testament.

1. The unique divine inspiration, entire trustworthiness and authority of the Bible. II Timothy 3:16, 17.

2. The deity of our Lord Jesus Christ. John 20:30, 31.

3. The necessity and efficacy (effectiveness) of the substitutionary death of Jesus Christ for the redemption of the world and the historic fact of His bodily resurrection. I Cor. 15:3, 4.

4. The presence and power of the Holy Spirit in the work of the regeneration. I Cor 12:3.

5. The expectation of the personal return of the Lord Jesus Christ. Acts 1:11.

The basic purposes are: A. Declaring Jesus Christ as Saviour—to lead others to personal faith in Christ as Lord and Savior.

B. Declaring Jesus Christ as Lord—to help Christians grow toward maturity as disciples of Christ by study of the Bible, by prayer and by Christian

fellowship.

Miss Harrington spent 5 years in India as a child when her father was over there to help with that country's food problem. She graduated from Bradley U., Peoria, with a degree in Home Economics.

Ellen will be the group's missionary project for this semester with proceeds from future bake sales going toward her support.

The president announced dates

for this and other activities: first bake sale, Sept. 3; car wash, Sept. 13, 9-6; bake sale, Oct. 1; and a hay rack ride, Oct. 10. Ginee thanked all who came, exhorted them to bring more people next week and promised that they would be dismissed on time from now on.

Paul Curtis, faculty advisor, encouraged the group in their daily witness at Parkland with "Be not overcome with evil, but overcome evil with good," Romans 12:21,

after which he closed the meeting with prayer.

Future weekly speakers and topics are Sept. 2—Pastor Richardson, "Loneliness & Coping"; Sept. 9—Helen Kaufman, "Self Image of a College student"; Sept. 16—Pastor Conway, "Relationships." Sept. 23, meeting Christian faculty; Sept. 30—Ellen Harrington (Subject TBA); Oct. 7, worship service—Paul Curtis.

142 make honor's list

A total of 142 students earned a position on the Parkland College Alpha Omega honor's list during the summer session by compiling a grade point average of 3.3 or above.

CHAMPAIGN—Georgette Bachman, Stella Blakely, Melanie Blankenship, Melanie Brandabur, Owen Chan, Jewel Clark, Richard Clark, Catherind Coats, Douglas Corley, Francis Dale, Dwayne Denhart, Donna Dickey, Diane Donnell, David Durso, Sonja-Anne Engel, Catherine Estes, Mary Fegan, Cecily Gifford, Leonard Goldstein, Leslie Gordon, Mary Claire Grove, Janette Hall, Gary Hamilton, James Hopkins, Susan Herman, Lavina Hughes, Billy Wayne Hunt, Deborah Sue King, Mark Knight, Jane Krümwiede, Steve Leonberger, Pauline Loomis, Janet Manther, Deanna McNeely, Arlene Mefford, Eileen Miller, Bronwyn Molloy, Debra Mount, Donald Mueller, Carole Muir, Theresa Murray, Twyla Niemann, Mark Ohls, Bradley Osborne, Patricia Pherigo, John Priedy, Elizabeth Robinson, Phyllis Runyan, David Ryherx, Ann Salamine, Carol Saldeen, Johnny Sexton, Snadra Sinnott, Robert Smith, Deanna Sukkar, Maureen Thurman, Joseph Trippiedi, Deborah Warnock, Denise Weatherford, Bradley Wells, Judy Whalen, Linda Selcoski, Michael Wilson, Alice Wittler

URBANA—Nanette Baldarotta, Patricia Black, Brenda Carlton, Jung Cho, Gregory Currey, Leo Dassow, Linda Davis, Carl Freeman, Janice Funk, Carla Heater, Peter Henderson, Michael Hickey, Kim Kardenetz, Bruce Kloth, Debra Langendurf, Joseph Palmberg, Edna Parsons, Julie Payette, Victoria Peterson, Debra Pheris, Jack Roberts, Marjorie Sanderson, Darryl Silver, Thomas Skoza, Thomas Young.

RANTOUL—Katherine Ball, Todd Claxton, David Cook, Zvia Davis, John Day, Patrick Ducheneauz, Debra Kay Gustafson, Frank Hayes, Steven Lighthill, Arleita Loudy, John Marquess, Charles Padilla, Wilbert Reay, James Sanders, Daniel Smith, Mary Uhl, Barry Wall,

Denise Wimberly.

PAXTON—Nora Beach, Cecil Grady, Patricia Hammel, Louis Saint, Deborah Seibel, Richard Vaughn Virginia Waltman

MAHOMET—Marilyn Beasley, Jeanne McGuire, Patrick McGuire, Mary Page, Paula Seten, Marilyn Wells, Matthew Wells.

TOLONO—Terri Bleichner, Patricia Salmon

DECATUR—Janette Bodine

BURBANK—Patricia boll

DEWEY—Elizabeth Boston, Earl Williams.

PESOTUM—Gerald Cler.

MONTICELLO—Melinda Combes, Kathryn Morris, David Nelson.

SADORUS—Victoria Correll, Sandra Klitzing.

PONTIAC—Janice Cox.

GENEVA—Denise descoteaus.

VILLA GROVE—Donna Dewitt.

STREATOR—Lisa Durham.

SAVOY—Gail Elder, Margaret Volk.

FISHER—Jerry Foster, David Masko.

ST. JOSEPH—Marlene Gidow, Deanna Huls.

OGDEN—Cathy Green.

FARMER CITY—Karen Harris, Debra Thacker.

GIBSON CITY—Carla Hill.

TUSCOLA—Agnes Jordan.

DIXON—Julie Kostecki.

FOOSLAND—Doru Marcusiu.

LISLE—Bruce Miller.

PHILO—Nancy Payne.

CHANUTE A.F.B.—Terrance Peterson.

BELLFLOWER—Laurel Power, Julie Schroeder.

LONGVIEW—Debbie Schwartz.

BUCKLEY—Kimberly Weber.

LITCHFIELD—Donna Wilson.

PROSPECTUS STAFF

Co-Editors Sharon Wienke
Chris Slack

Entertainment
Editor Scott Alender

Feature Editor Lori Walsh

Reporters Cathy Conerty
Randy Pregler

Copy Editors Maxine Leffler
Cindy Dean

Advertising and Art
Reproduction Mgr. Gary Dirks

Display Advertising
Staff Maggie McGrath
Beverly Simpson
Gert Gentner

Photography Editor Mark Sterkel
Photographers Randy Pregler
Ken Ferran

Composition Brian Anderson
Paula Gilbert
Advisor Larry Gilbert

PROSPECTUS CLASSIFIED ADVERTISING ORDER

(PLEASE PRINT)

ADVERTISER'S NAME _____

ADDRESS _____ PHONE NO. _____

PLEASE RUN THE FOLLOWING AD:

RUN MY AD _____ TIMES

25 cents for 20 words (maximum) to Parkland Students, Faculty, Staff (payable in advance)

CLIP AND BRING THIS AD TO X153—ACTIVITIES OFFICE

Due Fri. Noon for Wed. publication

- Advertising Majors -

NEED EXTRA MONEY?

Earn good money for part-time work! Display Advertising of the Prospectus needs help with sales and paste-up/layout. Excellent advertising experience.

For more info, contact Gary Dirks, Advertising Manager, in X-155.



cheap wheels



The Champaign-Urbana Mass Transit District—the M.T.D.—has 35 cent transportation all over town.

Buses operate from:

5:45 am-Midnight Monday thru Friday

5:45 am-7:00 pm Saturday

8:00 am-5:00 pm Sunday

You don't have to be rich to ride the M.T.D. ... just smart.

for schedule and route information

CALL 384-8188

Fast Freddy makes debut

by Chris Slack

Fast Freddy is back for the football and basketball season and I don't know how good of a predictor I am, but you will also have a chance to try your hand at this unpredictable sport.

All you have to do is fill out the entry blank with your name, phone and address. Circle the team that you think will win, and then fill in the "you pick em" game. The "you pick em" game will be the dud game of the week. When you are finished with the entry form, bring it to the Prospectus office (X-155) before 2 p.m. on Friday to be eligible for that weekend's contests. The winner (whoever picks the most games right) will win a cash prize of \$5. If there is a tie, the money will be split. So go for it in the 1980 college and professional football season.

On the professional part of the schedule, the first game pits NFC Central Division rivals Green Bay Packers and Chicago Bears. These games are usually nip-and-tuck but this year the Bears and Walter Payton should roll over the Packers and Poor Bart Starr, 27-10.

In a Monday night contest Dallas will take on the Washington Redskins. Without Roger Staubach, the Cowboys may be only ordinary, but Tom Landry's wizardry and the return of Ed "Too Tall" Jones after a stint in the boxing ring, the Cowboys should start off the season with a 17-14 squaker over the Redskins.

in an inter-division battle. Denver acquired Matt Robinson in the off-season and should be more mobile with him at the helm. With that great defense, they will be tough to beat. But, with Wilbert Montgomery and Ron Jaworski gaining more and more experience, the Eagles should put off a 20-17 win.

Next is Houston and Pittsburgh. The Oilers should be Super Bowl contenders this year since they acquired 'The Snake', Kenny Stabler from Oakland. Of course, the Oilers always had Earl Campbell but they never had a true passing game to compliment his great running. The Steelers will be tough to beat as usual with Terry Bradshaw running the show. I'm going to pick Houston as an upset winner by the score of 14-13.

Then the 'you pick em' game will feature the San Francisco 49ers (2-14 last year) against the New Orleans Saints. The 49ers have improved with Steve DeBerg showing great passing skills, but the Saints have all kinds of offense with Archie Manning, Chuck Muncie, and speedy Wes Chandler. This game should be the highest scoring game of the week as the Saints will put on a fourth quarter surge to beat the 49ers, 35-27.

The college schedule is abbreviated this week since many of the teams don't start until the following week.

The first game should be one of the top games of the early season. The game features the Fighting

Irish of Notre Dame against Mark Herrmann and the Purdue Boilermakers.

This is Dan Devine's last season as the coach of the Irish so I look for them to give it a last shot for Devine. Notre Dame should win 17-14, although Purdue has high hopes for the year.

Penn State hosts Colgate in an eastern battle. The Nittany Lions should have no trouble beating Colgate. The final score will be in the area of 38-7.

Then there is the area opener featuring Northwestern and Illinois. The Illini always seem to carry all of the bad luck. Injuries and fumbles hurt them last year and ineligibilities and injuries are once again hurting them this year. Rich Weiss and Wayne Strader walked out on Mike White and now Dave Wilson is having problems with his eligibility. Still, the Illini should win because they are playing hapless Northwestern. Illinois will win handily by the score of 31-10.

The Georgia Bulldogs and Tennessee Volunteers will battle it out in Dixie country and these games are always nail biters but the Bulldogs could pull it off this year with a 20-17 upset.

The final game of the week will be between Missouri Valley Conference rivals Southern Illinois and Wichita State. SIU has been down in the past few years and can't be any worse than they have been. Wichita State has been respectable, so I will take Wichita State, 27-17.

Parkland People

Editor's Note: The Prospectus is proud to introduce a new column this week to our readers, "Parkland People." This weekly feature will include personal items about students, faculty and administration at Parkland College. Your contributions are welcome. Call in or bring items to the Prospectus office by 2 p.m. Friday.

Since Labor Day weekend was recently commemorated, Prospectus interviewed people about how they spent their holiday.

Beth Wood of Tuscola enjoyed a rodeo in Palastine, Ill. Beth is a first-year student at Parkland, majoring in physical education.

Sheri Kallembach, a business education major, reported a most exciting holiday celebration. She gave her sister and husband permanents, then she proceeded to help her husband sort hogs. Sheri resides in Farmer City.

Any student of **Mr. Dean Timme** could probably guess correctly as to this teacher's holiday activities. Mr. Timme dined at Panama Red's, then he headed straight for the library.

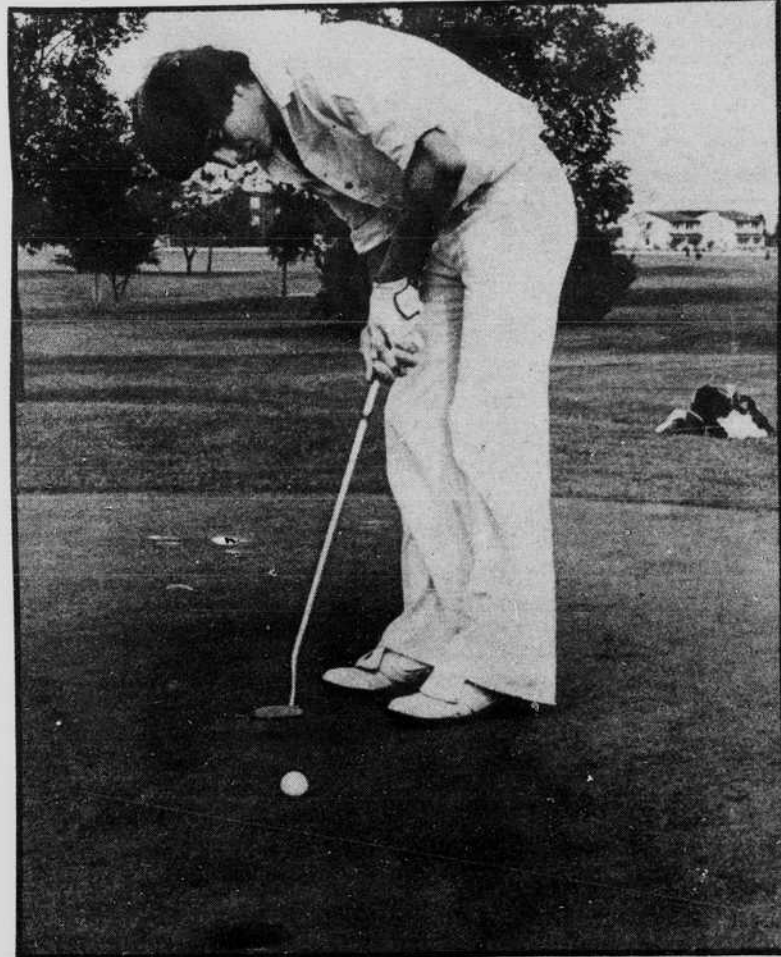
Gerald Daniels was quite pleased with his Labor Day weekend. Gerald spent the holiday in a plush hotel in Wisconsin at someone else's expense! But there was a catch to it . . . he had to participate in his cousin's wedding as an usher.

A roommate of **Kathy Fisher**, Bloomington, reported that Kathy's weekend was not all fun and games. Kathy had to have her wisdom teeth removed. We hope your next holiday is a little more joyous, Kathy!

Paul Buhnerkemper reported that he attended the inter-squad football game at Unity Friday night, and that he played golf at Par 3. Paul also summed up nearly everyone's weekend activities . . . "I partied, studied, and slept."

However you celebrated, we hope that your Labor Day weekend was a relaxing and enjoyable one.

—by Cathy Conerty



Concentrating on the hole, Chuck Speiser figures to be one of the top golfers on the Cobras' golf team this year. Photo by Ken Ferran

Sports

Parkland Prospectus

Thursday, September 4, 1980—Page 8



B-ball season around corner; meeting today

After a very successful 18-8 campaign last year, The Parkland women's basketball team will be getting their season underway shortly.

Anyone interested in trying out for the 1980-81 team should contact Coach Tim Wulf in his office at P-124 in the Physical Education Division. A meeting will be held in Room X-230 at noon today.



by Chris Slack

Bench Warmer

Cobras enter season with one letterman

The 1980 Parkland golf team is "inexperienced and I have no way of evaluating how good they will be because they are freshmen," according to Cobras' golf coach Don Grothe.

Parkland has only one returning letterman from the 1979 team after losing Mike McCoy, Steve Minor, Steve Pruitt and top golfer Ted Svedlund. Jeff Dodson, from Champaign Centennial High School, is the only returning letterman and, as of now, the top golfer on the team. Last year Dodson had an average of 80 and should improve on that this year.

But after Dodson, Grothe has no idea how good his team will be. He also has another problem—not enough kids are coming out for the team. "Part of this reason is that so many kids have jobs and they

don't want to leave their jobs to come out for golf," said Grothe.

Grothe is looking to six freshmen to take charge. Freshmen John Gatewood from Rantoul, John Milstead from Virginia, Ill., Chuck Speiser from Unity High School, Tod White from Gienbrook South H.S., and Mark McElwain from Mahomet are the hopefuls that Grothe is counting on.

Grothe also has sophomore Kim Hartmand from Champaign Central.

"Usually we have 12 to 14 golfers out for the team, but because of various reasons we have only six or seven out. We'll have to go from there," said Grothe.

Parkland's first meet is a dual meet with Danville today. Next Thursday they will host the Parkland Invitational at the U of I Orange Course.

Fast Freddy Contest

1. Everyone, off campus or on, except newspaper staff members, their families and Fast Freddy, is eligible.
2. This official entry blank must be used.
3. Only one entry per person will be accepted. Entries sent through the campus mail system will NOT be accepted. Entries must be brought to PROSPECTUS office (X155) in person or by U.S. Mail.
4. No individual can win the contest prize more than twice during the season.
5. All entry blanks are due in the PROSPECTUS office by 12 noon on the Friday before the games. No entries will be accepted after this time under any circumstances.
6. The winner will be announced in the following Wednesday's PROSPECTUS and will receive a cash prize of \$5.00.
7. Circle the team you think will win in each game. Circle both teams for a tie. The tie-breaker games (Game 5) will be used only in case of ties and will not count in the total of nine games to be predicted. Pick a score for the tie-breaker game.

Game 1 Chicago vs. Green Bay
 Game 2 Dallas vs. Washington
 Game 3 Denver vs. Philadelphia
 Game 4 Houston vs. Pittsburgh
 Game 5 You Pick 'Em (Pick a score)
 San Francisco () New Orleans ()
 Game 6 Notre Dame vs. Purdue
 Game 7 Colgate vs. Penn State
 Game 8 Northwestern vs. Illinois
 Game 9 Georgia vs. Tennessee
 Game 10 Southern Ill. vs. Wichita State

Name _____
 Address _____
 City _____
 Phone _____