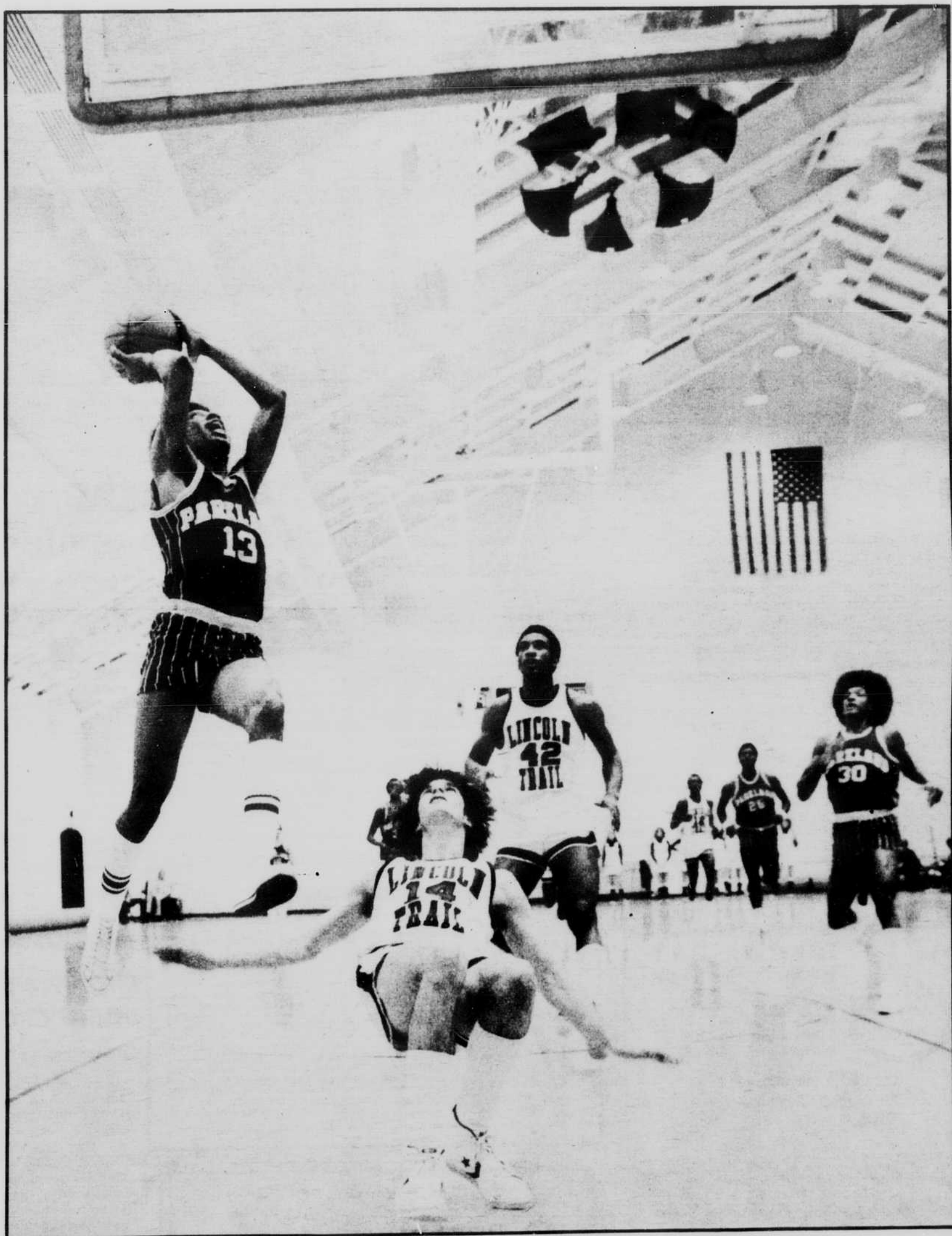


Prospectus

Parkland College

Champaign, IL Vol. 12 No. 20 8 pages Wednesday, February 28, 1979



Cobras go to state



Friends: top of the list

By Val Wallace

"There are no words for love," a great man once said. Obviously he never looked in a dictionary.

With some critics of the English language arguing that the concise meaning behind our words is becoming garbled in our minds, they would find a genuine case in our view of one another in our hearts, for describing our emotional ties toward one another—that great god, The Relationship—is a brain-bruising chore considering the volume of "friendship" words from which to choose and, more importantly—our generally vague understanding of each.

Although we tend to lump them together, each word, from chum to pal to ultimately, "friend," has its own particular meaning. How do I know? I looked in the dictionary, which revealed distinguishable differences in these words' meanings, relationship-wise. So, based on findings in Webster's Third New International, a few varied terms of friendship:

Pal

A pal is basically someone who keeps you company. companions in the strictest sense, you "pal around" together, accompanying each other to movies, games and so forth. Pals are described as intimate, which probably means, by Webster's definition of the word, "comfortable around and familiar with each other's gestures and habits."

Buddy:

The chief difference between buddies and pals is that while pals can be many, buddies come in pairs only. Technically speaking, one pal with you can be your buddy, while several does not make for several buddies. Perhaps a favorite pal is referred to as buddy.

Chum:

Consider archaic now, chum's traditional meaning used to be distinguishable from pal's meaning in that it referred to a pal who was also a roommate or who otherwise lived with you. Today, it is still distinguishable in that it refers to "habitual companions, closely associated." This fellow you see constantly. This sort of consistency is not as strong with pals or buddies who you may not see for long periods of time.

Acquaintance:

Mutual knowledge and familiarity, if only of each other's existence, establishes acquaintances. There is no genuine personal attachment though which exists between various types of friends, but no hostile feelings exist either. Acquaintances are "friendly."

Inimate:

An intimate is someone you are close to beyond reserve or reservation. You are not inhibited by them nor are you formal. An acquaintance, by definition, cannot be an intimate, but pals, buddies and chums, by definition, are.

confidant:

A confidant indicates a person "in whom one confides secrets, usually, but not necessarily an intimate." In other words, Webster points out, a detective or investigator, for example, often a confidant to many strangers, and many people by necessity "confide" to police officers fact they may never tell their friends or family. A confidant, then, is not necessarily a permanent role, but is often established by demand of an immediate situation.

Love and Lover:

Darling and sweetheart are synonyms for love, which, referring to a person, means someone who is the object of another's

"attraction, desire, or affection." Your love is someone who arouses you "delight or admiration or elicits tenderness, sympathetic interest, or benevolence." Also figured into this are "warm attachment, enthusiasm, and devotion."

A lover, very simply, is someone who loves. Your lover must love you, in one form or another, or he or she cannot be your lover, no matter what your feeling toward this person.

Friend

"A companion loves some agreeable qualities which a man may possess, but a friend loves the man himself."—James Boswell.

A friend seems to top the heirarchy of relationships. Love, according to Webster's, is the chief foundation of friendship as well as its major distinguishable difference between other relationships. Love is not mentioned in any of the other relationships, apart from lovers, who do not by the definition possess all the qualities of friendship, although lovers can also be friends.

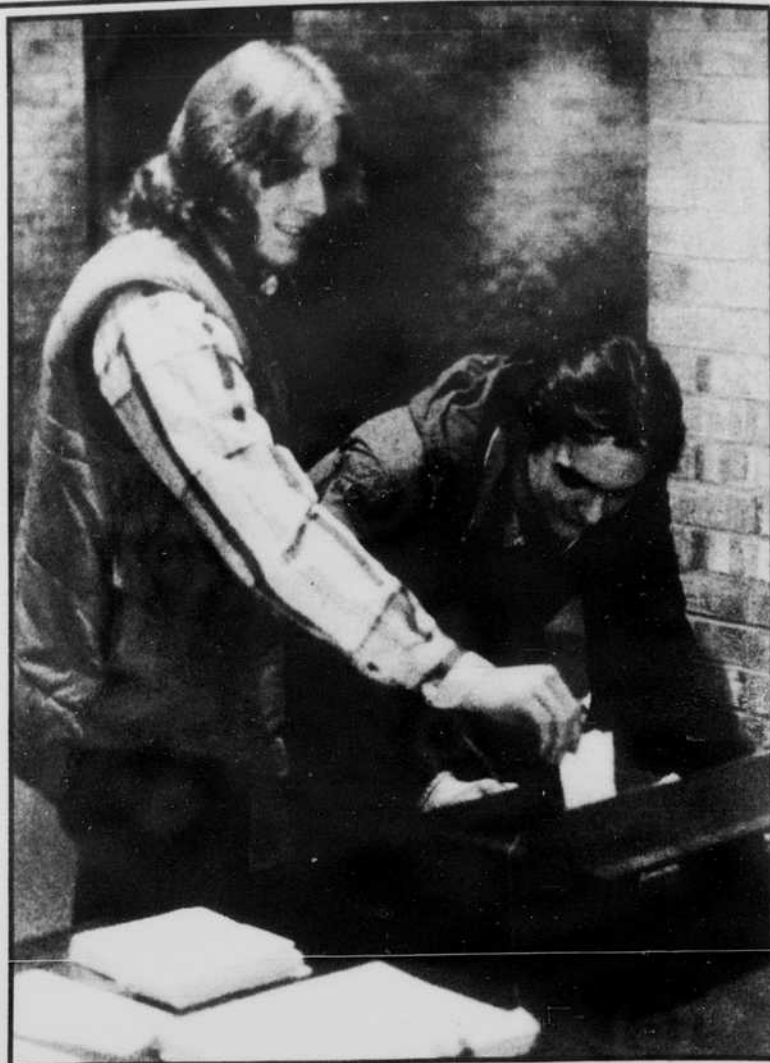
Derived from the Old English *fregan*, meaning "to love," the word friend symbolizes someone who seeks your society of welfare and who holds you in "affection, respect, or esteem."

He is an "intimate associate, especially when not a lover or relative."

A chief characteristic of friendship is that tendency to take your friend for granted, according to Webster. A friend is one "whose friendly feelings are assumed or from whom sympathy or cooperation is expected."

Friendship, apparently, is not merely reserved to people, either. Webster also defines a friend as "one not hostile or not an enemy, one that gives assistance of that favors or promotes something, such as an institution, a cause, or project."

Loyalty is stressed also in the term "friend." As C.A. Dial is quoted within the text—"A friend is someone who knows all about us, but is loyal to us just the same."



The suggestion box located on the receptionist desk in the college center is where you can drop off your complaints or compliments to let Stu-go know your views.

Here Tim Kelly and Scott Walter do their part. (Photo By Jon Sivier)

Letters to the editor Vick Rogers apologizes for past letter to editor

To the Editor

A few weeks ago I placed an article in this paper describing myself as a semi-saint. My real intentions were to hurt someone. To hurt someone you love very deeply and care about is insanely stupid. I am guilty of not only being insane—stupid but also of letting my ill-tempered pride get the best of me. I must confess that am I not only a phoney but also a fake hypocrite as well. I used this newspaper for devious reasons.

I knew if I placed an article in the newspaper publicizing my (supposed) theft that a person's trustfulness and honesty would be questioned by some people. But because we were having a fight, and I forget the reasons why, I foolishly placed the article anyway. This person knew absolutely nothing of my (supposed) theft, but with words I made it look that way.

I realize that this very sweet and wonderful woman will have nothing to do with me, but I pray that this angel will one day forgive me for what I have done.

Vick L. Rogers

Former griper changes mind about Canteen

To the students and staff—

As another former griper about Canteen and its services, I'm changing my tune. Congratulations to Mr. Tanner and cohorts for the addition of raisins and nuts (though caloric) to the snack machines, and the juice machine in "Vending Central." Now if they can just get the cost of hard-boiled eggs down to less than 25 cents.

Thanks again,
A grateful patron

Prospectus Staff

Co-Editors	Terri Anderson Cathy Butler
Layout Editor	Ward Page
Sports Editor	Tom Schmitz
Sports Writer	Pete Rosenbery
Advertising Manager	Jan Sterkal
Business Manager	Cathy Myers
Graphics Specialist	Barb Morgan
Photo Editor	Jim Corley
Photographers	Richard Berbaum Joy Dargan Jeff Heck Jon Sivier Mark Sterkel
Staff Artist	Jeff Steeley
Faculty Advisor	Jerry Lower
Front Photo	Jim Corley

Published weekly during the school year by students of Parkland College and for the Parkland College Community. Production by Garfield Press of Champaign. Display advertising rates are available upon request — phone 351-2266. Classified advertising is free to members of the Parkland Community presenting valid identification with submission of material. Letters to the Editor and unsolicited stories are welcome. They should be typed, double-spaced and preferably in 60-character lines. Letters must be signed and will be validated before printing, but name will be withheld upon request. The right to edit any submission in respect to good journalism is reserved.

Are you pregnant or think you are?

B 384-1881

Birthright
is there to help you.

Very Interesting ...
A New Shop in Champaign

Nita Kola
Trading Post

Used furniture for the home or office.
—Antiques and Knickknacks
Come in and browse

Nita Kola Trading Post
1401 N. Prospect - Champaign
JUANITA BRAY 356-6767 GENE BUNDY

THAT SPEX PLACE

OD's & MD's RX filled

For the Latest In-Style Frames & Lenses

Eye Glasses Fitted
O.D.'s and M.D.'s—RX's Filled
Your lenses duplicated

Located in Johnstowne Centre
5th & John, Champaign
384-5760

CAMPUS OPTICAL CO.

CAMPUS OPTICAL CO.
356-5787

FOR COMPLETE OPTICAL SERVICE AND THE LATEST IN MEN'S AND WOMEN'S FASHION FRAMES!

• O.D.'s and M.D.'s-RX'S Filled
CONTACT LENS POLISHING
In by 9:30
Ready by 11:30
OPEN 6 DAYS A WEEK
MON-FRI 8:30-5:00
SAT 8:30-2:30

Emergency Service On
BROKEN FRAMES
BROKEN LENSES
LENSES GROUND ON
PREMISES BY AFL CIO
UNION OPTICIANS

Eye Glasses Fitted
SAFETY GLASSES
SUN GLASSES
SHADES & TINTS
PHOTO SENSOR
LENSES

Bank Americard and Master Charge Accepted

605 S. Wright (1/2 Blk No. of Green Street, Next to Discount Records in Champaign)

**NATURAL-ORGANIC FOODS
VITAMINS & MINERALS
VEGETARIAN FOODS**

WE CARRY WHATEVER YOU NEED FOR
PREPARING NUTRITIOUSLY COMPLETE
MEALS

MON.-SAT. 9:00-5:30

**DIETARY
FOOD STORE**

356-9624
802 W. John, Champaign

**AUTO & CYCLE
INSURANCE**
For Students and Staff
Monthly Payment

Brya Insurance
Goldblatt's 356-8321



PC presents aging sessions

"Growing Older in America," a series of eight sessions on aging will be presented at Parkland College beginning March 20. Each session will be on Tuesday from 2:30 to 4:30 p.m. in lecture hall C-118. The series is sponsored by the University of Illinois in cooperation with the Parkland Program for the Long Living.

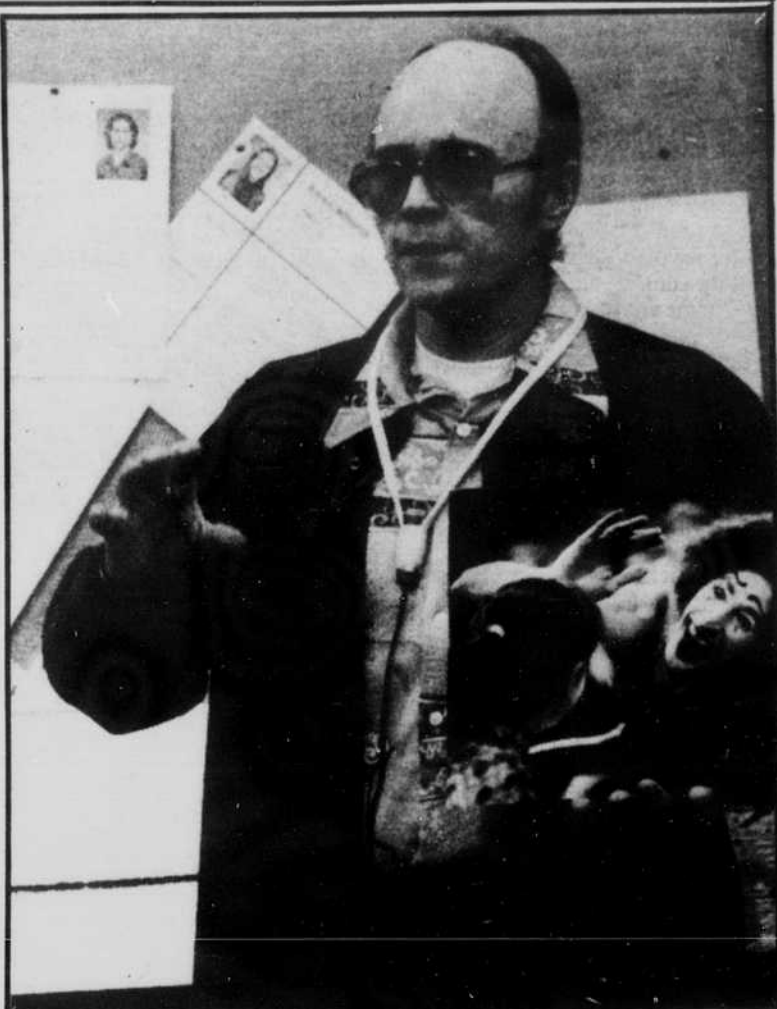
The session leaders will be University of Illinois faculty members who are engaged in various aspects of gerontological research. They will provide an overview and summary of research findings and significant issues related to aging.

The schedule for the series is:

March 20, Introduction and Stereotypes and Myths of Aging, by Thomas O. Byerts; March 27, Physical Activity, Aging, and Health by Dr. James E. Misner and Dr. Ben Massey; April 3, Learning Capabilities of Older Adults by Dr. Alan B. Knox; April 10, Older Adults and Family Relationships by Dr. Queenie B. Mills; April 17, Health Care for the Aged: Programs and Provisions by Dr. Shirley H. Wattenberg; April 24, Retirement: How Do We Prepare for It? by Dr. V. Pattern; May 1, The Physical Environment and Aging by Dr. Leonard F. Heumann and Dr. Leslie S. Lareau; May 8,

The Impact of Current State and Federal Policies on Aging Programs by Dr. Marilyn Flynn.

The series is open to people who work with or are interested in older adults. Interested individuals may enroll for the series for \$26 or for individual sessions for \$6 each. Registration must be made in advance, by March 5 for the entire series, or two weeks in advance for individual sessions. To register, contact Dr. Miller, 118B Illini Hall, 725 S. Wright St., Champaign, telephone 333-6305.



Curt Beamer, a veteran photographer presently employed at The Champaign-Urbana Morning Courier, gave a photo workshop for the Prospectus staff and several students from the photography class at Parkland recently.

Beamer brought along many of his photographs to demonstrate his talents and gave the audience many helpful hints on the art of taking pictures.

One of his hints was to always be ready to capture the unexpected.

(Photo By Jon Sivier)

Parkland Players present production

The Parkland Players will present their spring production, *The Real Inspector Hound*, on Thurs., Fri., and Sat., March 8, 9, and 10, in C-140 at the college. One performance is scheduled for Thursday at 8 p.m. and two each will be given on Friday and Saturday at 7:30 p.m. and 9 p.m.

Called a "comedy satire of delightful quality" by the New York Post, *The Real Inspector Hound* is a contemporary "whodunnit" by playwright Tom Stoppard. A parody of Agatha Christie's classic murder mystery, *The Mousetrap*. *The Real Inspector Hound* presents the audience with several entertaining dilemmas and eventually involves them in such a way that reality and deception delightfully intertwine.

Casting for the play is complete, with Danny Wantland, Danville, chosen for the role of Inspector Hound. Other cast members are: Donale Kallembach, Seymour; Gigi Faraci, Urbana; Randy Capitani, Cathy Myers, Karl Potthoff, Harl Ray, Donna Royzcka, and Don Smith, Champaign.

The production is under the direction of Jim Coates, Parkland drama instructor and theater director.

The public is invited to attend. Tickets are available in the Student Activities office X-153 and at the door. There is a \$1 admission charge for the general public, 50 cents for Parkland students with I.D.'s.

Trustees approve the letting of bids

The Parkland College Board of Trustees approved the letting of bids completion of the outdoor recreation and physical education project at its regular monthly meeting. The estimated \$500,000 project will include a softball diamond, three intramural playing fields, a baseball diamond, six tennis courts, a 400 meter running track, an archery range, a golf driving range and putting green, a maintenance shed and walkways and lighting.

In other business William Staekel, president of Parkland College, reported to the board that enrollment figures for second semester are up 100 students over last year's second semester statistics.

A Blue Ribbon Committee has been appointed by the Illinois Board of Higher Education to examine the State's funding program for community colleges and to make recommendations for improvements.

The statewide Community College President's Retreat is being hosted by Parkland on March 1 and 2.

Apply for PC award

Application for the Parkland Foundation's 8th annual Student Achievement Recognition Program are now available at the Office of Financial Aids. Each year one man and one woman are selected as the college's two most outstanding students and are awarded \$100 and a certificate of merit.

Criteria for judging include demonstrated progress in the student's field of study, participation in college activities, and service to the community and society.

The judges pay particular attention to obstacles or challenges

the student has had to face and overcome, and also to the effective use of any advantages the student may have been fortunate enough to experience.

All instructors are encouraged to let their students know about the competition and also to nominate students whom they feel are particularly deserving of this award. Any Parkland student who has completed 9 semester hours by January 1, 1978 with at least a 2.0 GPA is eligible to enter.

Applications should be turned in by Fri., March 9, to the Office of Financial Aids.

PENTAX CAMERA
 with Takumar auto-lens, 1:1.8 lens. Grossen light meter, flash attachment, and grab bag come with. \$150.00.

Curtis Mathes
 4 YEAR WARRANTY ON ALL TELEVISIONS, HOME ENTERTAINMENT CENTERS VIDEO CASSETTE RECORDERS AUDIO COMPONENTS

4 YEARS PARTS	4 YEARS PICTURE TUBE	4 YEARS LABOR
-------------------------	--------------------------------	-------------------------

Sales, Service, Rentals
 Rent applies towards ownership

L. B. YOUNG TV
 13 MAIN, DOWNTOWN C.
 PHONE 356-1110

Les Young, Franchise Dealer

WIU rep. here today

Due to the snow, the Western Illinois Representative had to cancel his visit to Parkland College on Feb. 16. He will be here today, Feb. 28 from 11 a.m. to 2 p.m. in the college center.

If you have any questions about courses, programs or transfer to WIU be sure to stop by. If you have any further questions call Russ Mills in the counseling center, 351-

2260 or come to the counseling center.

Register to vote

Voter registration will be today, Feb. 28 from 11 a.m. to 1 p.m. and on March 2 and 5 from 11 a.m. to 1 p.m. at Parkland College in the college center.

All that is needed to register is proof of name, age and address.

Style it at
Johnny's
 1720 W. Bradley 352-2009
across from Kraft

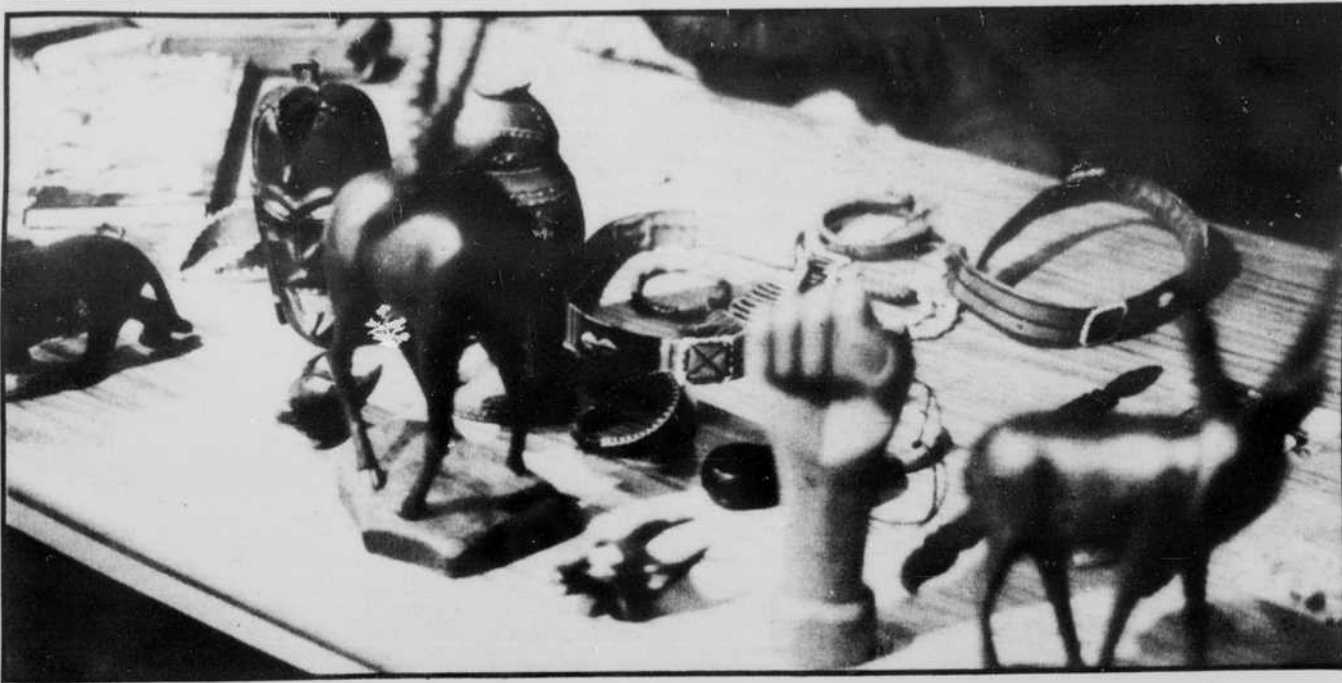
Students, Faculty, Staff
 Show your I.D. and get...

10% off

offer expires March 31, 1979

LUMS 701 W. University Ave. Urbana

1206 N. Mattis Champaign



By Terri Anderson
Co-editor Prospectus

Congratulations to the International Student Organization for the fine International Student Day they gave Parkland College last week.

The day was a success thanks to the many international students who participated in the event and proved to the rest of us that apathy does not reign in the hearts and minds of all Parkland students.

The president of the ISO, Amadu Koroma said he had to try hard to convince some of the students to take part in the first International Student Day at Parkland. I am sure after the day ended and the crowd diminished, the students who shared their culture with us felt proud and important.

These students took the time and effort to set up attractive displays that represented their countries effectively and provided an excellent chance for the Parkland students and faculty to take part in an interesting geography lesson.

Congratulations go to Linda Van Rosendaal, faculty advisor to the ISO and Harris Moeller, Dean of Students for their cooperation in the International Student Day.

***A day
to remember...***

Photos by Joy Dargan





Blood drive today Seminar at PC Mar. 7

Parkland College is sponsoring a Blood Drive today, Feb. 28 and two more on March 28 and May 8. Blood donors are needed to help the Champaign County Blood Bank meet their goal of 60 donors per month.

The Champaign County Blood Bank, a division of the Regional Health Resource Center, is a not-for-profit medical organization that draws, tests and distributes blood and blood components throughout Champaign County. Twelve thousand units of blood are drawn per year to supply the hospital facilities of Champaign-Urbana which include Carle foundation Hospital, Mercy, Cole, Burnham City Hospital, the area's designated trauma center, and Chanute Air Force Base Hospital at Rantoul.

Champaign-Urbana has two active open heart surgical teams. Each surgery requires a minimum of 8 units each. Blood is also used in the treatment of bleeding ulcers, anemias, trauma victims and leukemia patients. A continuous supply of blood is needed because red blood cells are only good for 21 days. Blood cannot be synthetically manufactured. The blood bank needs people who care, people who are willing to take the

time to donate this precious gift.

The donors who donated at the drive on Jan. 31 can pick up their donor cards at the registration desk next to room X-117 on Feb. 28 from 8:30 a.m.-4 p.m.

If you are interested in donating blood contact Sheila Sullivan, college nurse, at ext. 369 or stop by the blood drive today from 8:30 a.m.-4 p.m.

Political discussion

Community women involved in politics will discuss the political system and its accessibility to women during a workshop on Mon., March 5, *Women and Politics: Overcoming Political Avoidance*.

Featured at the workshop, sponsored by the Parkland College Women's Program, are: Berenice Carroll, associate professor of political science at the University of Illinois; Helen Satterthwaite, Democratic state representative from the 52 district; Joan Severns, Champaign District 4 Councilwoman and mayoral candidate; and Susan Thomas, president of the Champaign County League of Women Voters.

Dr. Elsie H. Field, medical director for Planned Parenthood Association for Champaign County, will present "Some Questions Answered About Menopause" at Parkland College on Wed., March 7, from 7-9 p.m. in L-159.

Dr. Field will discuss the physical changes which occur during menopause, the physical and emotional reactions to the

changing process, and treatments for these changes and reactions. Audience questions will also be fielded.

This presentation is sponsored by the Charles W. Christie Foundation Center for Health Information (CHI) and Parkland College. Registration is preferable; contact the CHI at 351-2334.

Tournaments coming to PC

Two tournaments, chess and table tennis, will be held at Parkland for any students interested.

Both tournaments are open to currently enrolled students of Parkland. The deadline for entries to both tournaments is Tuesday, March 6, at 11 a.m. The applications may be submitted to the Activities Office (X-153) or the game room. Awards will be presented to the winner and runner-up.

The tournament draw will be Tuesday, March 6, at 11 a.m. in the game room.

For complete details, pick up your applications form in the Activities Office.

The workshop runs from 7-9:30 p.m. in X-117, and is free and open to the public.

Sleep seminar

Dr. Gregg Helgesen, psychologist at Carle Clinic, will present "... To Sleep, Perchance To Dream" on Tues., March 6, from 7-9 p.m. in L-159 at Parkland College.

Dr. Helgesen will discuss what triggers dreaming, why some people remember their dreams while others do not, the significance of certain dreams, and recurring dreams. Questions from the audience concerning sleep and dreams will be fielded.

WPCD's Best Music List

TOP 10

1. Do Ya Think I'm Sexy—Rod Stewart
2. Fire—Pointer Sisters
3. Le Freak—Chic
4. A Little More Love—Olivia Newton-John
5. I Will Survive—Gloria Gaynor
6. Y.M.C.A.—Village People
7. Too Much Heaven—Bee Gees
8. Lotta Love—Nicollette Larson
9. September—Earth, Wind, and Fire
10. Shake It—Ian Mathews

TOP 5 ALBUMS

1. Blondes Have More Fun—Rod Stewart
2. Briefcase Full of Blues—Blues Bros.
3. Crusin'—Village People
4. Spirits Having Flown—Bee Gees
5. 52nd Street—Billy Joel

TOP 5 COUNTRY SINGLES

1. Every Which Way But Loose—Eddie Rabbitt
2. Back On My Mind—Ronnie Milsap
3. I'll Wake You Up When I Get Home—Charlie Rich
4. I Just Can't Stay Married to You—Cristie Lane
5. Happy Together—T.G. Shepard

WELCOME BACK TO WINTER!

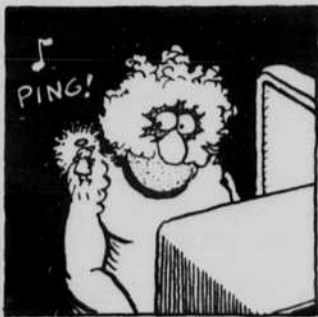
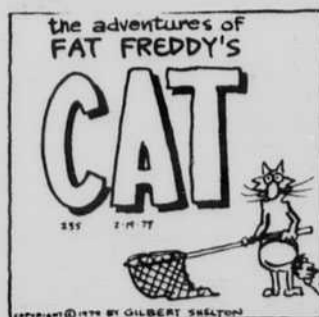
THE MTD PRESENTS Winter Riding Hints:



- **TRY TO PLAN YOUR TRIPS DURING THE NON-RUSH HOUR**
You will be surprised how comfortable the ride can be.
- **HAVE THE EXACT FARE READY**
Try standing in the cold or snow while someone frisks himself looking for his fare.
- **MOVE TO THE REAR OF THE BUS**
It is always warmer in the back of the bus. Honest! Besides, you never know who you might meet.
- **USE THE REAR DOOR TO EXIT**
This way you avoid being part of keystone cop comedy at the front door.
- **LISTEN TO YOUR FAVORITE LOCAL RADIO STATION**
This will keep you aware of weather related and schedule changes.



FOR WINTER TRAVEL INFORMATION
PHONE 384-8188





No classified ads accepted by phone

Classifieds

Unclaimed and New BARGAINS

Jewelry-Audio
Photo-TV
Musical Instruments

We Buy - Sell - Trade - Loan

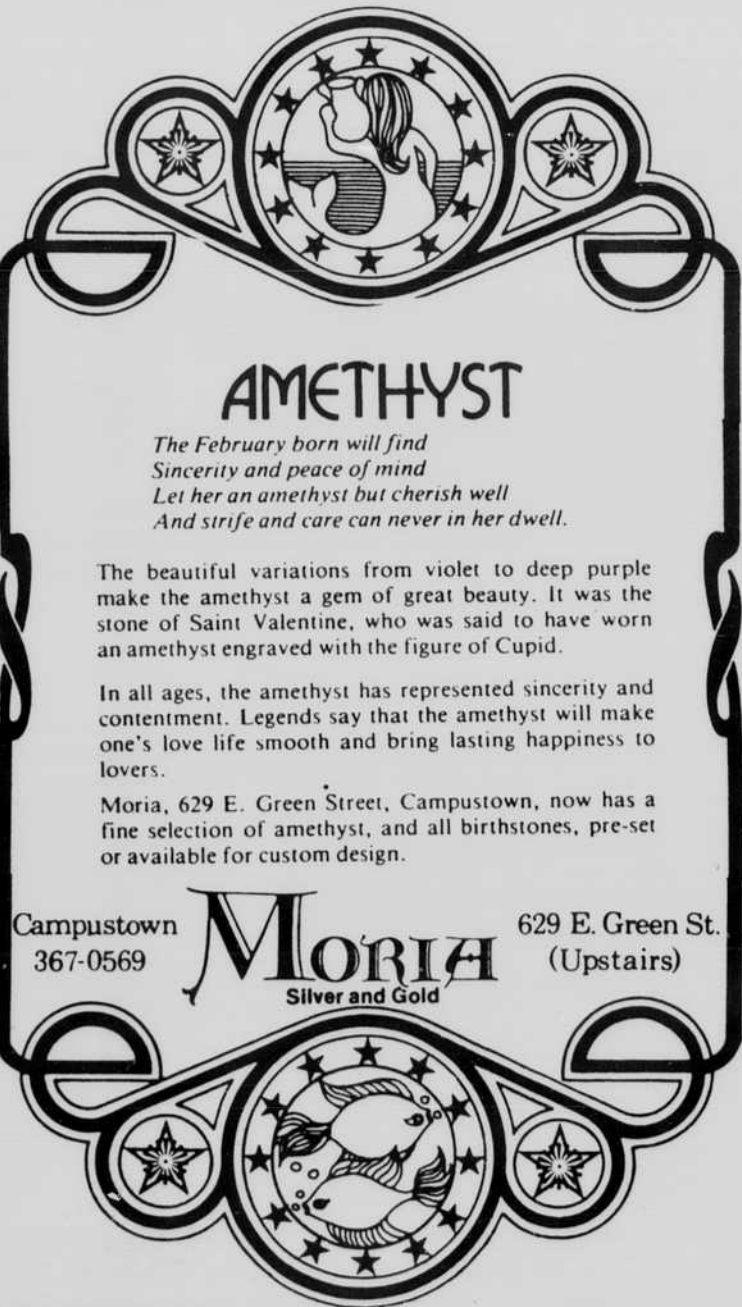
TRADERS WORLD
57 MAIN
Downtown Champaign
near Amtrack Station
More than "Just" a Pawn Shop



Highlander Coin Laundry

Drop off laundry and dry cleaning service. In by 9, out by 5.

1724 West Bradley
Phone 356-6300



AMETHYST

The February born will find Sincerity and peace of mind Let her an amethyst but cherish well And strife and care can never in her dwell.

The beautiful variations from violet to deep purple make the amethyst a gem of great beauty. It was the stone of Saint Valentine, who was said to have worn an amethyst engraved with the figure of Cupid.

In all ages, the amethyst has represented sincerity and contentment. Legends say that the amethyst will make one's love life smooth and bring lasting happiness to lovers.

Moria, 629 E. Green Street, Campustown, now has a fine selection of amethyst, and all birthstones, pre-set or available for custom design.

Campustown 367-0569 **MORIA** Silver and Gold 629 E. Green St. (Upstairs)

• **Apartments to Sublet**

PERSON NEEDED IMMEDIATELY TO SUBLEASE!! Lease lasts until August 14th Apt. located on Corner of Mattis and John (Stoneleigh Courts Apts.) 1. One bedroom, 2. \$165/month, 3. Apt. #12. Call Debbie at 352-4708 before 3:00 p.m.

SOON TO SUBLET—Small, furnished apartment with utilities included for \$150.00 per month. Off-street parking. Pets allowed. Friendly neighbors. Lease till August. Call 351-2157.

BRAND NEW TRI-LEVEL, 3 BEDROOM APT. FOR SUMMER SUBLET—Full option. Includes dishwasher, microwave, A/C, furnishings, 2 balconies and fireplace. Call 367-9919 for more info.

• **Wanted to Buy**

WANTED TO BUY—PA Equipment. PA amp, bass equipment. Call after 3:30. 892-4462.

• **Goin' My Way**

BEAT THE MIDWEST WINTER BLUES—Join the crowd during spring break March 15-25. 7 nights on Daytona Beach, at the Voyager Beach Motel. Travel straight through via Illini Swallow Deluxe Coach. Travel arrangements provided by Parkhill Tours. Total cost \$200 per person (\$25 refunded damage deposit). Includes quad accommodations and transportation. For more info, contact Mike Elmer at 352-9418 or 893-4020.

OVER SPRING BREAK on your way to Ft. Lauderdale, drop me off at West Palm Beach. We'll split gas costs up and back. Pete Quinn, 253-2535.

• **Lost & Found**

FOUND IN PARKING LOT—Car keys. Check at information desk.

• **Miscellaneous**

THE PARKLAND COLLEGE COMMITTEE for Peace and Social Awareness is ALIVE AGAIN! Watch for the announcement of our next meeting — come and get involved!

INTERESTED IN GOOD MUSIC? If so, come see the award-winning "Illini Statesmen" barbershop chorus. Appearing with them will be several excellent quartets and in a special guest appearance — William Warfield. Two shows will be held on Saturday, March 3rd, one at 6:00 p.m. and the other at 8:30. For tickets, contact Jon Sivier, c/o the PROSPECTUS.

BANSHEE — A Parkland College rock group will make their debut in April at the Dance Marathon. Come and enjoy the original hard rock songs written by Banshee. Don't miss it!

COME ONE, COME ALL — Enter the challenge of participating in the mind-snapping games of pool, table tennis, chess, checkers, backgammon and euchre tournaments. The tournaments begin Tuesday, March 6 at 11:00 a.m. in the game room. Your entries are due then and there also! So join in the excitement.

DRIVE A CADDY! Chauffeur, errand person needed for remarkable older woman. Good pay, part time. Martin, 356-4179.

THE NEWMAN CLUB will hold its next meeting tomorrow, Thursday, March 1, in room X150 at 12 noon. Everyone is welcome to join.


• **For Rent**

LARGE, SPACIOUS 2 BDRM. APT.—(On bus line) Really Nice! A/C, carpeting, all appliances, pets allowed, washing facilities right outside door, private drive, assigned parking space. Rent and utilities paid til end of Feb. Hurry! Here's an offer you can't refuse!! Call 359-2611 ANYTIME. Ask for Julie.

APARTMENT FOR RENT—\$150 a month, \$100 deposit, 1 bedroom. Close to downtown Transit Busline and Parkland College. Available March 1, 1979. Call Bob Nicolette, 359-1143 evenings or Joy Jarman, 398-0070 evenings.

Classified Order Form

Name _____
Classification _____
Insertion Date(s) _____



SATURDAY, MARCH 3 8:00 PM

OUTLAWS

with Wireless

ISU UNION AUDITORIUM Tickets \$7.50-\$8.00
NORMAL, ILL.

TICKET INFO (309) 436-5444
BOX OFFICE HOURS NOON-5 weekdays
No Smoking, Drinking, or Cameras in Concert Hall

MATTHEWS HAIR DESIGNERS

University Inn Lincolnshire Centre 221 W. Main
Champaign Champaign Urbana
384-8401 359-1400 384-8400

2108 W. Springfield Sunnycrest Mall
Champaign Urbana
359-1409 384-8402

Winner of over 50 State, National, and International Awards



COUPON BEAT THE EASTER RUSH

with this ad
Get His or Hers Perm

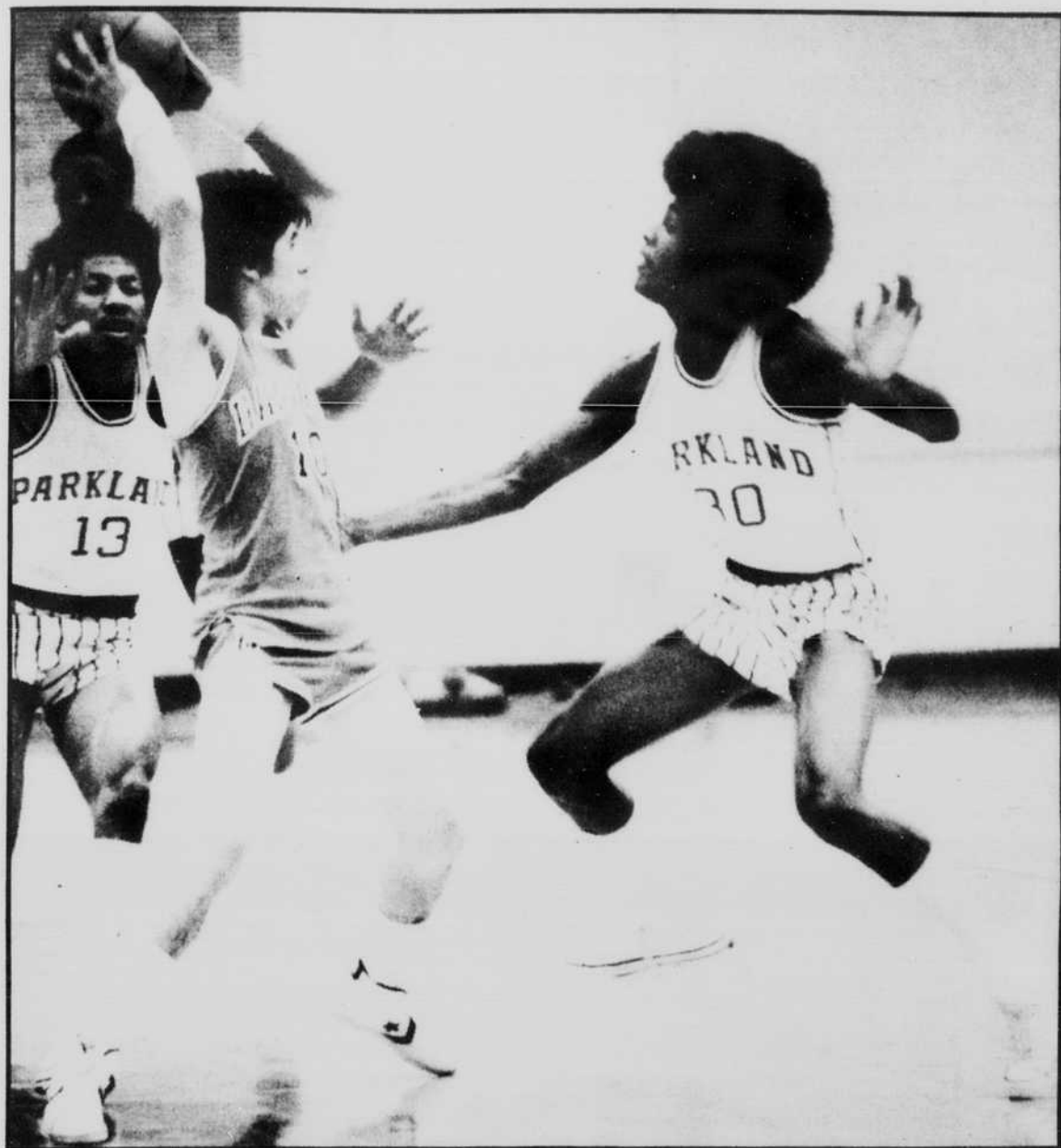
(reg. \$40.00)
for

\$25

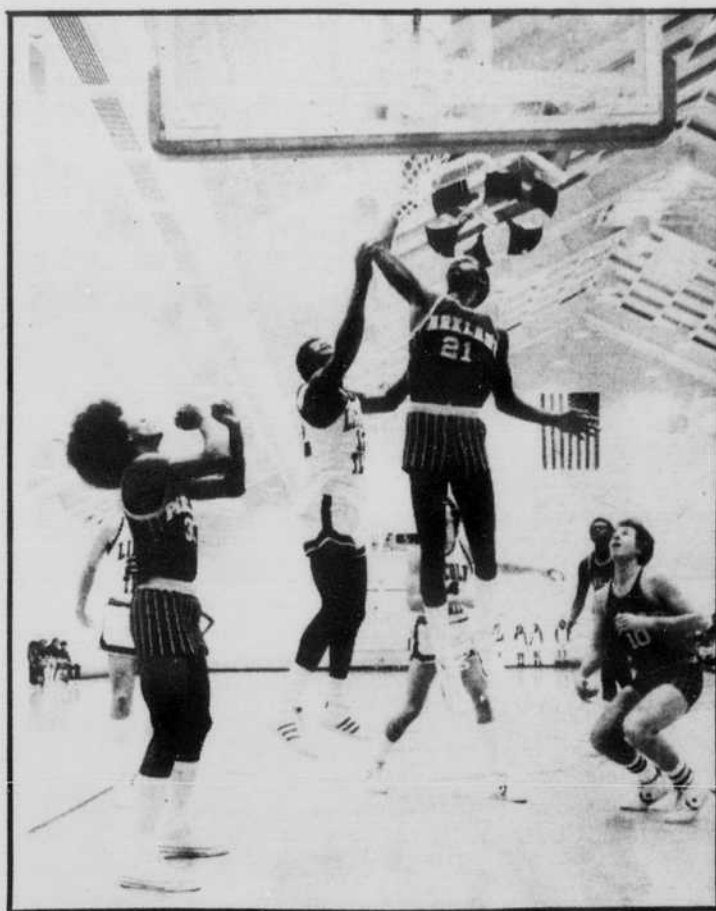
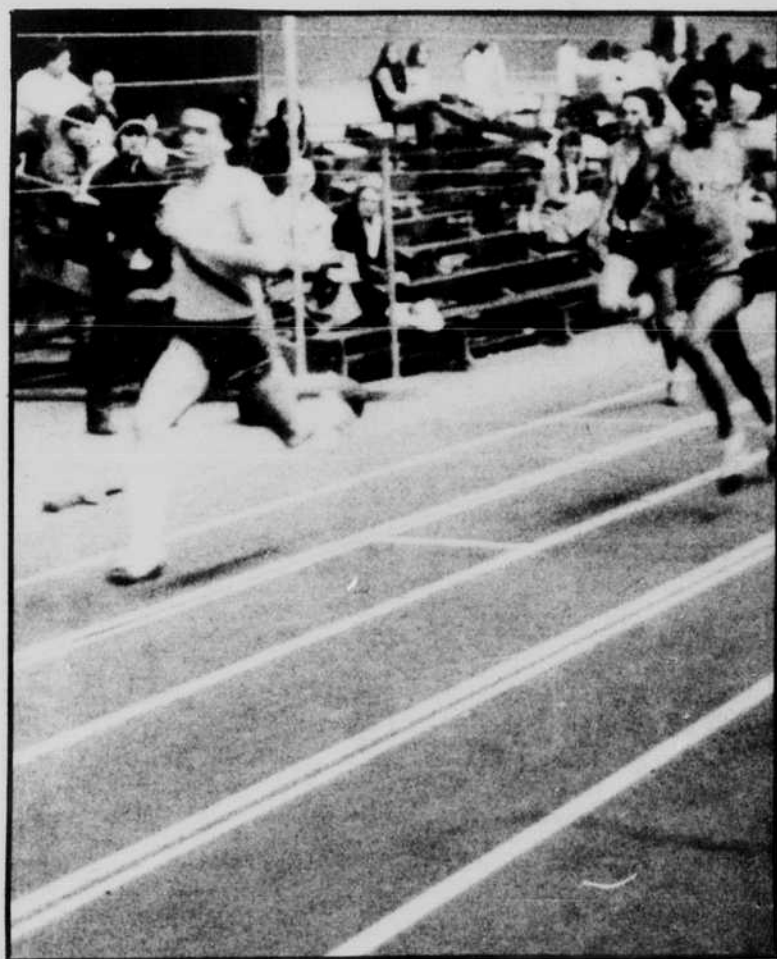
offer good now through March 15



Goin' for it all



(Above) Dodie Dunson (30) applies pressure with Robert Sangster (13) against Danville's Mike Schunik. The Cobra's lost this match, 88-86, in a double overtime thriller. But the Cobras made up for it in the weekend Sectional when they defeated Lake Land in overtime for the championship and advanced to the state finals starting tomorrow. (Right) Bill Toland streaks to the finish line in the 300 yard dash semifinals. Toland placed second in the final. The Cobra trackmen are also waiting for the state meet (March 10) as they have finished their indoor season placing second in the Parkland Invitational. (Photo by Jim Corley)



TAKIN' IT DOWNTOWN — Gary Rucks gives this slam dunk his "personal touch" Friday night during the Cobras' 95-79 win over Lincoln Trail. Lincoln Trail's Reggie McLaurin tries to defend the bucket as Cobras Dodie Dunson and Lou Henson look on. Parkland will face Kankakee in the semi-finals of the State Tournament Thursday at 1 p.m. (Photo by Jim Corley)

OPEN **BOWLING** LEAGUE

SNACK BAR  COCKTAIL LOUNGE

24 BRUNSWICK GOLD CROWN LANES WITH A-2 BALL RETURN

COMPLETELY EQUIPPED PRO SHOP

ARROWHEAD LANES INC

 **352-5288**

PLENTY OF PARKING CHAMPAIGN
1401 N. MCKINLEY

THE ARMY RESERVE HAS A NEW BONUS PROGRAM

\$1500 in cash or up to \$2000 for your education.

Ask your Army Recruiter
Sgt. Dennis Frietag
356-5144
TODAY

"SPRING SEMESTER"

Super Deal for Parkland students wanting only semester leases at affordable prices. One or Two bedroom apartments off campus on the bus line!
Plus, we pay for your heat, hot and cold water, and trash removal!

Hurry Out!

Country Fair Apartments
2106 W. White St., Champaign
359-3713

OPENING MARCH 1979
The Beautiful New Innsbruck Lodge
(Formerly Bavarian Inn)

- Lodging opens March 1979 Restaurant this Spring
- All newly decorated and furnished to make your stay a pleasant one
- Nearest Motel to Parkland College, perfect for your out-of-town guests
- Rooms available for overnight lodging or by the month.

MAKE ROOM RESERVATIONS NOW FOR Second Annual Lifespan Planning Workshop for Women — March 9 and 10

Phone (217) 356-9605
Corner Bradley and Mattis



Terry Turner passes off to Gary Rucks (21) in the Cobra's first Sectional game, against Lincoln Trail. PC blew the Statesmen off the Cobra Court with a 95-79 victory. (Photo by Jim Corley)

Sectional champion Cobras go to state

By Pete Rosenbery

Parkland's Cobras, fresh off a sectional championship, will try and advance even farther in the state tourney Thursday afternoon against Kankakee's Cavalier's at 1 p.m. in the Mary Miller Gym Danville.

Parkland earned the berth last weekend when they knocked off two highly touted teams, Lincoln Trail on Friday and Lake Land in the Section VII basketball tournament at Parkland on Saturday.

In the Lincoln Trail contest on Friday, Gary Rucks led the Cobras with 25 points as Parkland advanced into the finals with a 95-79 win.

The Cobra's rebounding and shooting were the forces that did Lincoln Trail in, with Parkland holding a 38-33 edge on the boards and outshooting the Statesmen from the field, .603 (38-33) to .424 (31-73).

Parkland jumped out to a 6-0 lead, increasing the margin to 28-16 before Lincoln Trail stormed back to go ahead 33-30. But Parkland outscored Lincoln Trail 19-6 in the final minutes of the first half to take a 49-39 advantage at half. Parkland then coasted the rest of the way for the win and settled down in the stands as the seconds game was getting started.

Terry Turner and Robert Sangster added 23 and 20 points respectively for Parkland, who improved to 18-7 on the season with the win.

Lake Land, which had beaten Olney in the first game of the tournament on Tuesday night, surprised Danville 86-69 to gain entry into the finals.

Lake Land already had one edge on Parkland, defeating them twice during the regular season. But Parkland, with the double figure scoring of Gary Rucks, Terry Turner, Robert Sangster and Matt Bennett fought off the Central Illinois Athletic Conference champ 80-75 in overtime.

The Cobras jumped out of the starting gates early, grabbing an 18-9 lead with less than nine minutes gone in the first half. But Lake Land came back, scoring the next 12 points in a row to take a 21-18 advantage. The game remained close the rest of the first half, with the Cobras leading 42-40 at halftime.

The second half was just as close, as both teams battled back and forth for the lead. Lake Land went up 71-69 and went into the four-corners, but with 38 seconds to go, Terry Turner scored from the baseline to tie the game at 71-71. Lake Land took a last ditch shot but missed.

From the start of the extra period, the Cobras put the "bite" on the Lakers, with two baskets by Gary Rucks, the latter on a patented crowd-pleasing stuff.

Robert Sangster then hit for the Cobras while Lake Land scored twice, as Parkland held a slim 77-75 advantage with two minutes to play. But Matt Bennett hit three of four free throws in the final seconds to give Parkland its first sectional win ever and a chance to defeat Kankakee in "the rubber" game of the series.

Leading the way in scoring for Lake Land was Tom Steppe with 22 points, as the Lakers finished the season with a 23-9 record while Parkland now has a 19-7 count.

NJCAA REGION IV FINALS March 1-3, 1979 at Mary Miller Gym, Danville



Track places second in Parkland Invitational

By Tom Schmitz

Parkland's track team finished second in their own Invitational behind Jackson Community College of Michigan, 146-98, Sunday. Fifteen teams competed.

Clifton Hill was the lone PC winner, running the 440 in a time of 49.4 for first place and indoor school record. Brent Barth placed third in the same event in 49.85 and Bob Parrish ran a 51.3 for sixth place. Barth also placed third in the 60 yard high hurdles.

Bill Toland placed second in the 300 and third in the 60 yard dashes. Toland was nipped at the tape in the 300 by Vincennes' Jeff Phillips. Phillips also nipped Toland in the 60 but lost to LeRoy Thompson of Forest Park. Toland's times were 31.8 and 6.45. Phillips was 31.6 and 6.4 and Thompson was 6.3.

Phillips also won the long jump with a 23' 6-1/4" leap. James McDaniel placed third for PC with a 22' 9-3/4" jump. Dana McCoy pulled a muscle in the finals and did

not place. Coach Lee LaBadie still feels McCoy will be ready for the Region meet, though.

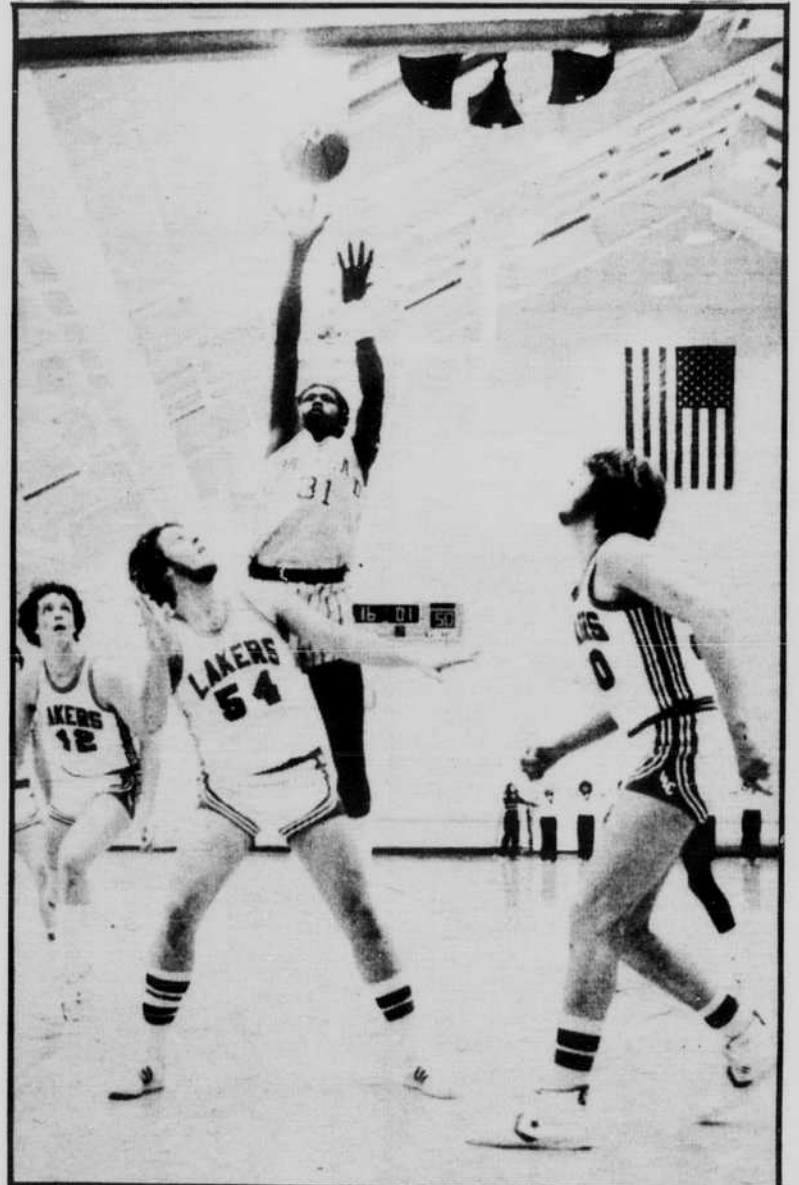
Charles Broadway took second in the triple jump. Gerald McNair, Forest Park, leaped 48' 10-1/2" to top Broadway's 45' effort.

PC's distance medley placed second behind Southwestern Michigan, 10:31.5—10:37.9. David Patrick, Clifton Hill, Henry Nykaza, and Alan Larson ran the event for PC.

Cary Colwell placed second in the high jump, behind Jackson's Gary Sykes—6' 11-1/2" to 6' 8-1/2".

Mike Thompson vaulted 13' 6" for third in the pole vault. David Patrick placed third in the 880 with a 2:00.1 time. The mile relay placed third in 3:27.8 behind the legs of Cameron Clark, Parrish, Barth and Hill. Clark ran a 1:14.2 600 for fourth, beating one Jackson runner, but finishing behind three others.

Other PC places were Dave Eichelberger, fourth in the shot put, 45' 9-1/2"; Steve Elam, seventh



Andre Kyse shoots over Lake Land opponents Tom Steppe (54) and Mark Fitt in the championship match that PC won, 80-75, in overtime.

(Photo by Jim Corley)

in the two mile and fourth in the mile, 9:21.5 and 4:28.2, and the two mile relay (Thom Uhlir, Nykaza, Larson, Patrick), fifth in 8:16.

Even though the nearest Illinois team in the standings was Wright JC, seventh with 37 1/2 points,

LaBadie still believes the region meet on March 10 will be close, and that anyone can win. LaBadie expects DuPage, who did not run in the meet Sunday, to be the main challenge along with Wright.

Nonprofit Org.
U.S. Postage
PAID
Champaign, Ill.
Permit No. 268

PARKLAND PROSPECTUS
2400 West Bradley Champaign, IL 61820