



Here we go again

Juanita Gammon takes over her new job as Coordinator of Communications. She's looking toward little changes and forward to a good year; read her story on p. 4.

The student government has worked over the summer — installing the groundwork for a check-cashing system at PC and laying out plans for other activities. Story is on p. 2.

An expert in retention spoke to teachers at a workshop last Friday. Read about John Roueche's speech on p. 9.

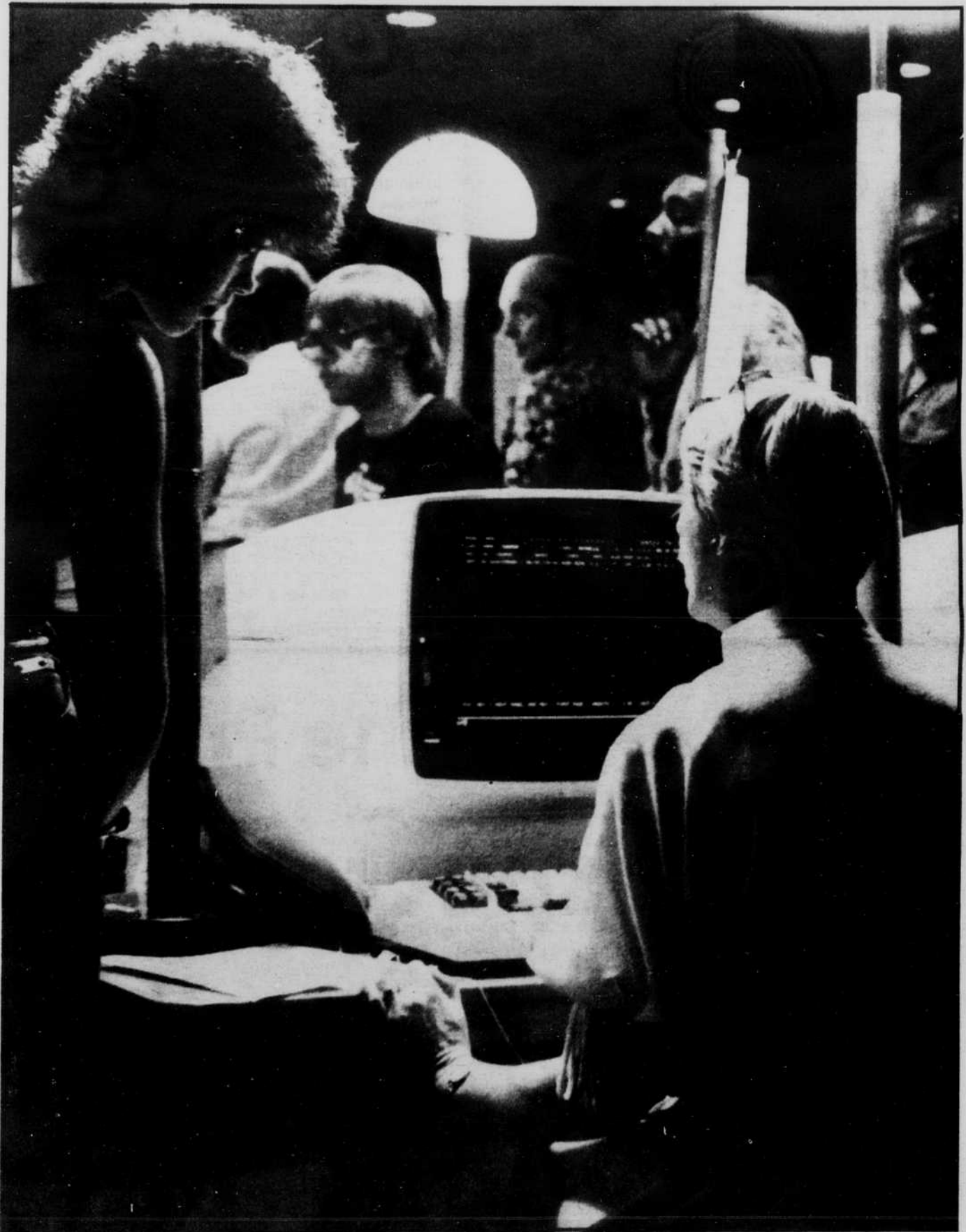
Fast Freddy is back — a little earlier than usual, Freddy forecasts football scores. Match your talents against The *Prospectus* prognosticator, p. 12.

Cablevision representatives are having a demonstration/program on Tuesday. Details are on p. 3.

Have nothing to do? Look through the list of campus organizations and take part, p. 12.

PC's duplication department has expanded. More machine has led to more work. P. 7.

The International Students Organization has made up a quiz. Find out if you are a Global Genius or an International Ignoramus. P. 6.



**Registration hassles —
photo story on page 5**



Stugo takes action

A teacher evaluation for the student, better food service, less apathy — more student involvement, and a check-cashing service are some of the plans the student government president, Mary Tangora, will follow this year.

The teacher evaluation will be a booklet listing a teacher's academic background and class format so the student can choose a teacher who best fits his needs.

"We don't want to interfere with the teacher's academic freedom," said Tangora. "We're just trying to help the student and the teacher."

The evaluations would be limited to the transferable courses, except PEC courses, and may be limited even more. Tangora hopes to bring

this proposal to the Parkland College Association on Sept. 18.

The check cashing service will be here, says Tangora. The service has been wanted by the students for a long time, and soon students who show their PC I.D.'s and another identification card, plus possibly a service charge of 5 or 10 cents, can cash up to a five-dollar check at the cashier window.

Once a system for the evening students is put into effect (plans for the service to be at the information desk is under consideration), then the service will start. The Business Office will dictate the hours of service.

The food service — "We will not see it," says Tangora, but she hopes to get plans started.

"I hope Charlene (Szymusiak) will be back on the food service committee," Tangora said. Szymusiak was on it last year and had started many things rolling in that direction.

The problem has been funds. The food service is listed behind the theatre and administration building in priorities.

At the present, the student government meets every Monday at 3 p.m. This may change so the time is more available to students, but Tangora will not know until after the elections in September.

'Chaos' to highlight beginning of school

It's called "Fall Chaos" and it should fit in with any student's schedule. An egg-throwing contest and a three-legged race are just a couple of features in the madness of student activity day sponsored by the student government.

The action starts tomorrow at 10 a.m. with free time to play frisbee, softball, or whatever. WPCD will supply the music.

At 11 a.m., scavenger games and a "Lost and Found" auction begins. And the food — hot dogs,

baked beans-potatoe salad, potato chips, and pepsi, will be served.

Starting at 11:45 — the egg-throwing contest, followed by a frisbee contest or football contest (depending on the wind) at 12:15 p.m. The three-legged race ends the morning affair at 12:45 p.m.

The evening will have scavenger games at 6 p.m., "Lost and Found" auction at 6:15, and food at 6:30. Again, WPCD supplies the tunes.

Gift certificates will be awarded to the winners of each event.

Commuter program will help Parkland people save gas

A Share-a-Ride program is being promoted for all commuter students at Parkland College for this fall semester. The intent of the program is to conserve gasoline, to save money for Parkland students and to make new friends while riding to and from campus.

The Parkland Student Association with the support of the College administration has established on campus a Share-a-Ride center which enables students to identify other students who reside in the same area, who have similar class schedules, and who arrive and leave campus at approximately the same time. A map of the district on the bulletin board located by the snack bar dining area provides an easy aid in identifying an area of residence. Request cards are available for indicating a need for a ride or a desire for riders.

This program enables all

Parkland students, full-time or part-time, day or evening, those commuting daily as well as those commuting only on one day or evening, to participate.

The Parkland Student Association invites all students to visit the Share-a-Ride center and

to register early in order to save money and fuel by sharing a ride. The method is easy. Participate join the Share-a-Ride Club and Save!

For more information, contact the Parkland College Activities Office, X153, 351-2265.

Stugo elections for ten seats is 12-13

There are 14 positions in the student government office, however, only four of them are filled at the present. Elections by the student body will be Sept. 12-13 for these positions: Secretary, Treasurer, Athletics Senator, Public Relations Senator, Student Services Senator, three Day Senators and two Evening Senators.

Information on how to run for these offices can be obtained in the Activities Office, X-153. The deadline for petitions is 12:30 p.m., Sept. 6.

Current Stugo members are Mary Tangora, president; Meggie Brown, vice-president; Cynthia Vaughn, Convocations Senator, and Steve McDonald, Campus Organizations.

cocktails

• Lunch Specials • Pizza • Sandwiches

AFTER Five PLATTERS

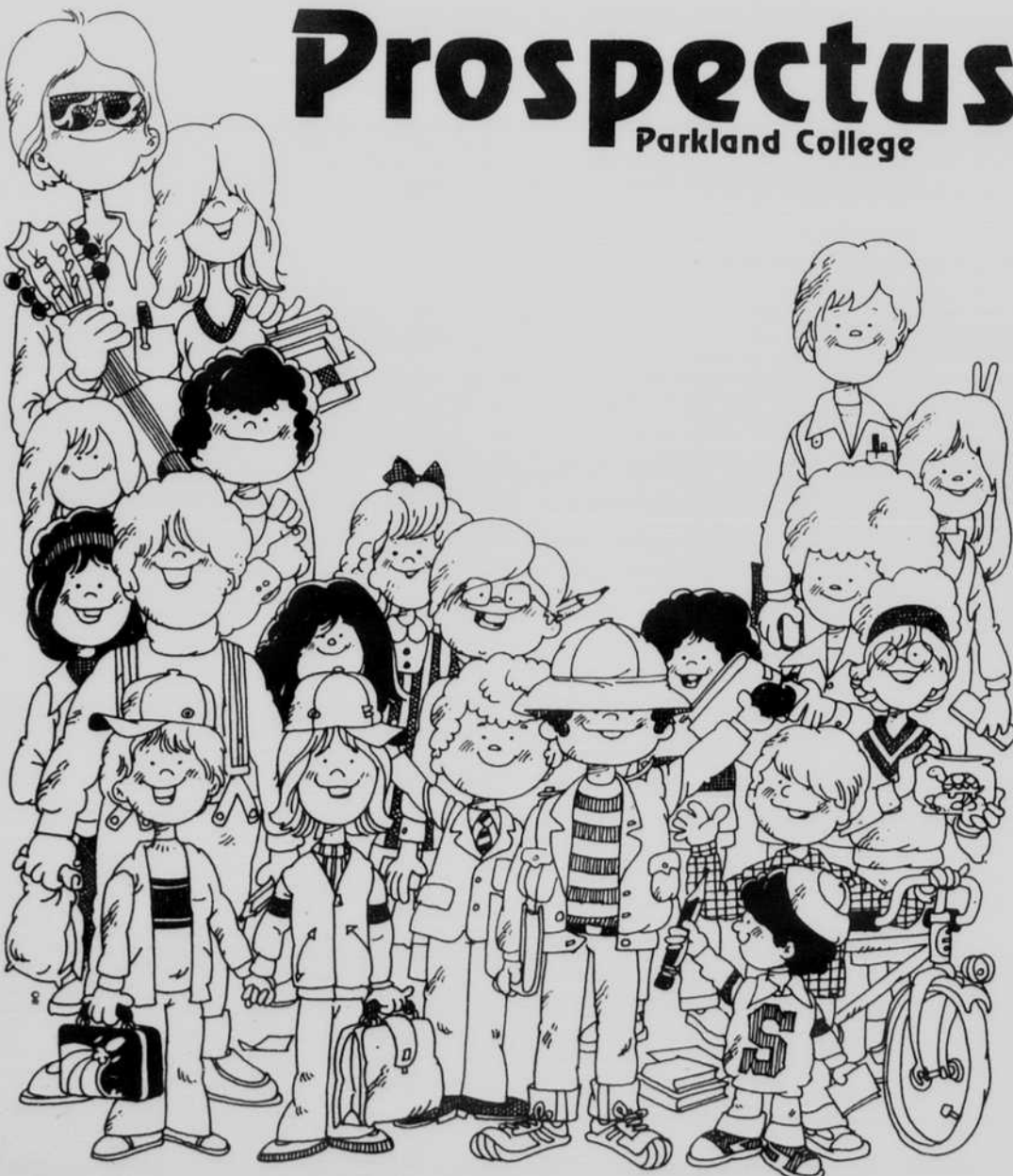
• Steaks • Shrimp

GRUNT

621 E. Green, Champaign

People and the Prospectus

Prospectus Parkland College



"The Prospectus is here to serve Parkland People."

To do that we need people — Lots of people. We need staff writers-photographers, copy editors, artists, and advertising people. If you think you can make it as a Prospectus people — show up at the Prospectus office, X-155. Staff meetings, every Wednesday at 11:00.

You should be one of us.



Dedication features teleconferencing

Cablevision (Champaign-Urbana Communications, Inc.) will formally dedicate the newly activated cable system in the Twin Cities with an experiment in live teleconferencing Tuesday, August 28, at 7 p.m.

Dedication ceremonies will be cablecast live from three points on the system including newly activated Champaign City Hall, WILL Studios on the U of I campus, and Sunnycrest Mall in Urbana, the site of Cablevision's formal reception. Viewers at home will see a program originating from all three points simultaneously on their TV screens.

Cablevision's general manager,

James Thomas, will anchor the program from the Sunnycrest location. "We wanted to show our subscribers that this full two-way cable system can cablecast a program from virtually any place in the wired community. But we're also experimenting with some new ideas in teleconferencing by showing viewers all three locations at once."

"What we are going to do," said Thomas, "is use full color pictures mixed at various points on the cable system, all ending up as one composite TV picture for the viewer. As far as we know, we'll be the first to try teleconferencing of this complexity."

The one-half hour program will

require five separate color cameras and two special effect switchers. Video signals will be sent through the cable system on both forward and reverse cable channels. "We are going to push the cable system to the limits it was designed for," said Bennett Boyd, Cablevision marketing manager. "It's like producing a program from a studio with two separate switchers and camera cables that range from 100 feet to six miles."

Cable subscribers that watch the program on Channel 10 will see for the first time live pictures from newly activated Champaign City Council chambers. Cablevision is

preparing to add Champaign City Council meetings to their regular schedule of Urbana meetings cablecast on the government access channel. In addition, University of Illinois administrators will be part of the dedication program to inform the cable subscribers what new programming will soon be added to the cable system from the University.

"The interesting thing about this experimental program," added Boyd, "is that the participants will

be miles apart but conversing just as if they were in the same room."

"One obvious benefit of this type of programming will be its uses in the classroom." According to Boyd, the Champaign, Urbana, and University of Illinois cable trunks will eventually interconnect all educational facilities. "At that point," said Boyd, "it will be up to the teachers to decide what outside classrooms or information facilities they would like their classes to interface with, and do so via the cable system."

Women to show defense

A demonstration of self-defense for women led by "Chimera" instructor Cathy Corl will take place tomorrow at 8 p.m., in the Wesley Foundation, corner of Green and Goodwin, Urbana. "Chimera" is a women's self-defense group based in Chicago. They offer demonstrations,

beginning and advanced classes, and internships for prospective instructors. The women of

"Chimera" teach a concept of self-defense which combines physical fighting techniques with mental techniques and strategy, role playing, and discussion.

This demonstration by "Chimera" is sponsored by the Women's Information and Resource Exchange. A \$2 donation will be accepted to help offset expenses. If there is enough interest in this event, further classes in this area may be negotiated.

To register and for more information, call W.I.R.E., 344-7323 or Marie Lindhorst, 344-1120.

Computer majors eligible for ICP scholarship

Students enrolled in a computer science or computer technology program are eligible to receive a scholarship for the 1980-81 school year through the International Computer Programs, Inc., announced Larry A. Welke, president of I.C.P. The scholarship is designed to be an investment in the future of the information processing industry.

The second annual I.C.P. Scholarship applicants must be enrolled in a computer science or computer technology program as either a sophomore or a junior. The scholarship will consist of one-year's tuition plus education expenses up to a maximum of \$5,000.00 at the United States college or university of the winner's choice.

The I.C.P. Scholarship Committee, made up of highly qualified men and women in the information processing industry, will base their selection on: the student's accumulative grade point average in his or her field of study, and overall grade point average; need for financial aid; participation in data processing-related activities;

school activities and leadership roles; DP-related and non DP-related accomplishments and awards. The final test for the I.C.P. Scholarship finalists will be an essay.

The first national I.C.P. Scholarship, awarded to Hugh F. Mackworth, a junior at Stanford University, Stanford, CA, was announced earlier this year at the Eighth Annual I.C.P. Million Dollar Awards Ceremony held at the Royal Sonesta Hotel on Bourbon Street in New Orleans, Louisiana. The winner of the second I.C.P. Scholarship will be announced at next year's Million Dollar Awards Ceremony, again to be held in New Orleans.

Applications will be available through the data processing and financial aids departments of all United States colleges and universities. The deadline for filing scholarship applications is October 15, 1979. For further information, contact Carol Stumpf, Corporate Communications Assistant; International Computer Programs, Inc.; 9000 Keystone Crossing; Indianapolis, Indiana 46240; (317) 844-7461, (800) 428-2329.

**NATURAL-ORGANIC FOODS
VITAMINS & MINERALS
VEGETARIAN FOODS**

WE CARRY WHATEVER YOU NEED FOR
PREPARING NUTRITIOUSLY COMPLETE
MEALS

MON.-SAT. 9:00-5:30

**DIETARY
FOOD STORE**

356-9624
802 W. John, Champaign

S A L E

Danskin Skirts 25% off

Blouses up to 50% off

Moccasins 50% off

Paraphernalia up to 20% off

Many other items.
Sale ends Sept. 9.

Marrakech Imports

406 E. Green, Champaign (OPEN ON SUNDAYS) 352-8258

JOIN THE

**AMERICAN
NATIONAL
BANCLUB**

These are a few of the services provided by your **BANCLUB** membership:

- No Minimum Balance*
- Unlimited Check Writing*
- Personalized checks*
- Free Photocopy Service*
- Interest refund on new installment loans*
- Free Notary Service*

All this plus the convenience of

**SEVEN DAYS A WEEK
BANKING**

7 AM to MIDNIGHT
at our Main Bank Location


**AMERICAN
NATIONAL
BANK
of Champaign**

Centennial Plaza Branch
Kirby at Mattis
CHAMPAIGN, ILLINOIS 61820

Main Bank
Country Fair
Shopping Center
PHONE 217/351-1600

Round Barn Facility
Round Barn Center
Member FDIC

**AMERICAN
NATIONAL
BANK OF CHAMPAIGN**





Juanita Gammon is the new Coordinator of Communications, replacing Ed Kelly in that position. She and newcomer Steven Brown will add a different flair to the department of five options — Advertising, Broadcasting, Broadcast Technology, Journalism, and Visual Arts. (Photo by Carl Phillips)

Gammon on top of Comm. Dept.

by Randy R. Strebing

Juanita Gammon's total picture of the upcoming year in her new position as Communications Coordinator is, "It's going to be a super year." Gammon is replacing Ed Kelley, who has assumed his new position as Assistant Dean for Community Services.

Gammon believes that the key to the door is the staff, stating that the staff at Parkland is excellent. Her job will include all programs of Communications — Advertising, Broadcasting, Broadcast Technology, Journalism, and Visual Arts.

"There aren't very many changes that I will be making, other than working very closely with our advisors on job marketing," said Gammon.

Gammon has been at Parkland for over 10 years, starting when only a few art classes were being

offered. She worked to build up the Communications Department to offer more to the students, that when they graduated from Parkland, there were jobs to be found as they were able to go right from PC to a job, and they knew what they needed to know to do the job. Not spending time on things they didn't need, but taking courses that would prepare them for their jobs.

"I'm very excited to have Steven Brown on the staff, working in the radio station and teaching radio communication courses," Gammon said. "He brings with him a lot of talent and depth to broadcasting communications. This is about the only changes that have been made."

Gammon's previous experiences in the community include designing and publishing, and working the 2-year transfer art program into Parkland to offer better job placements.

The Communications Department prepares students with realistic entry level skills to work for a variety of firms. Courses are designed to provide students with the practical skills that are important.

Gammon is looking forward to a really good year. Asking about her personal life, well, she's single, but has a look in her eye, a look of everything is together and she is ready for tackling anything — even her job.

Volunteers are wanted at UI

The University of Illinois Division of Rehabilitation-Education is looking for volunteers to assist visually impaired or deaf students during the fall semester.

Volunteers are needed to read, to record, and to transcribe into braille both general material and specific course material, according to Portia R. Thomas, graduate assistant in the division's services for the blind and deaf.

Persons volunteering to work with the sight handicapped should have time to read or record at least two hours a week during the semester.

Reading may be done at the center, at the university library or elsewhere. The place and time are arranged at the convenience of the volunteer and the student.

Recording may be done at the Rehabilitation-Education Center, Oak Street and Stadium Drive, or at the reader's home. Times are arranged at the convenience of the reader.

Volunteers with a general reading interest are needed, as well as persons to read in fields such as law, mathematics, chemistry, computer science and engineering.

A course in braille transcription will be held Tuesday nights, Aug. 28 through Dec. 11, and a sign language course, Mondays, Sept. 10 through Dec. 10. Both are scheduled for 7:30 to 9 p.m. in the Rehabilitation-Education Center.

Anyone may volunteer or enroll for the free non-credit courses by calling 333-4604 or going to 124 Rehabilitation-Education Center.

WITH THIS CARD IN YOUR WALLET YOU'VE GOT THE BANK IN YOUR POCKET.



With all the other worries you have these days, we don't think your banking should be one of them. And at Champaign National, we'll do everything we can to see that it isn't.

One of the big ways we can do that is by offering you the 24-Hour Clubhouse Card or Personal Card. There's no cost, and with the 24-Hour Clubhouse you can do anything that you can with a teller . . . and do it faster and more privately.

So, if you need cash any time of the day or night, come to the Clubhouse! We've got a whole network of them all over town to serve you . . . at our Main Bank (Park & Randolph), at BankPark (Springfield & Randolph), and at BankWest (Springfield & Belmont) for cash withdrawals, deposits, loan payments or fund transfers, and for cash withdrawals only at City Bank of Champaign (on Kirby Ave. across from Uncle John's) and Market Place National Bank (on the Market Place Convenience Center Road). That's 5 locations for 24-hour service. No other C-U bank gives you that kind of convenience and continuous availability.

Another way we can simplify your banking is by offering you CheckMaster, our no-hassle checking account. With CheckMaster you don't have to worry about keeping a minimum balance. You simply pay .15 per check written, and we take care of the rest! No catches, no hidden charges. Plus we'll send you a quarterly statement with every transaction itemized.

Obviously, we don't have the space here to detail the ways that Champaign National Bank can serve you. But stop by and we'll tell you about them.

The 24-Hour Clubhouse and CheckMaster . . . 2 of the many ways in which Champaign National Bank will bend over backwards for you!

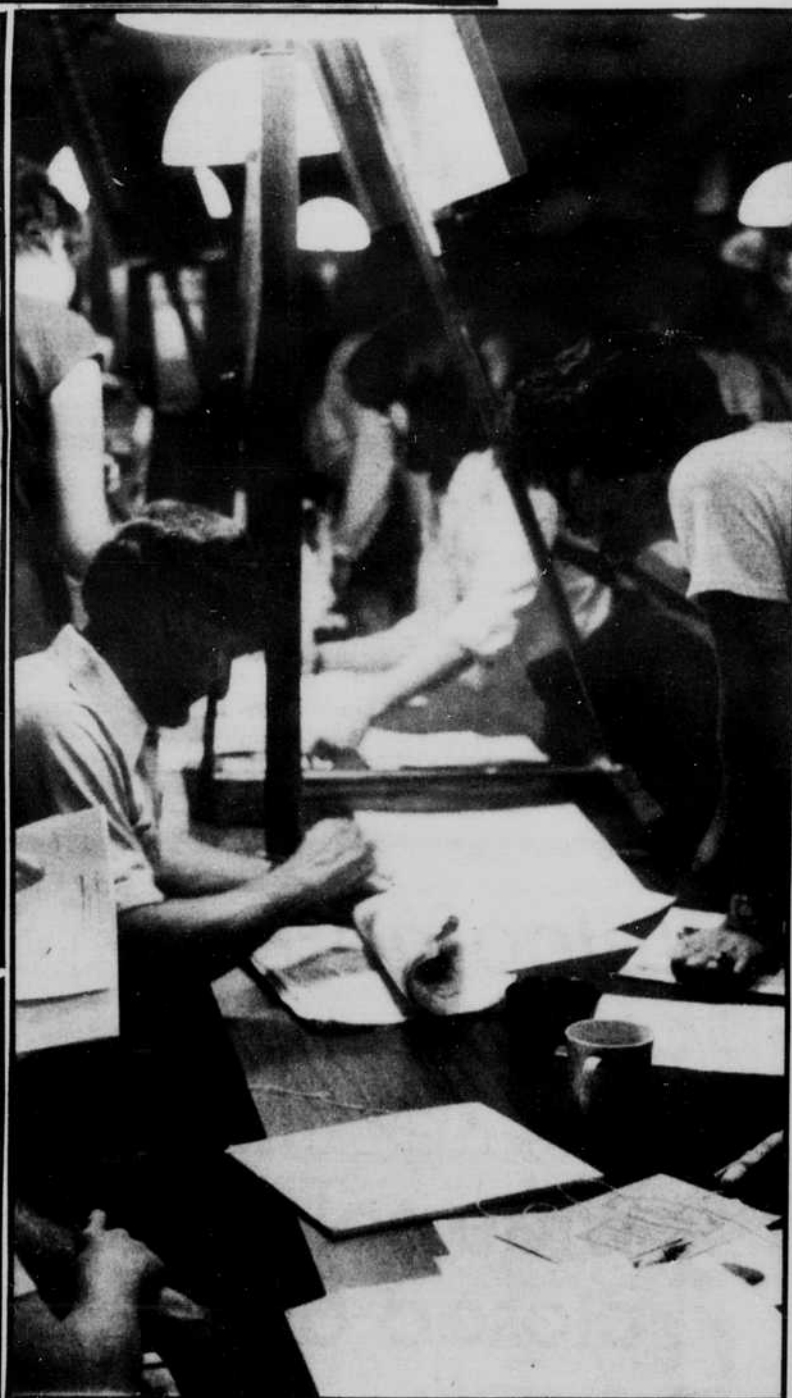
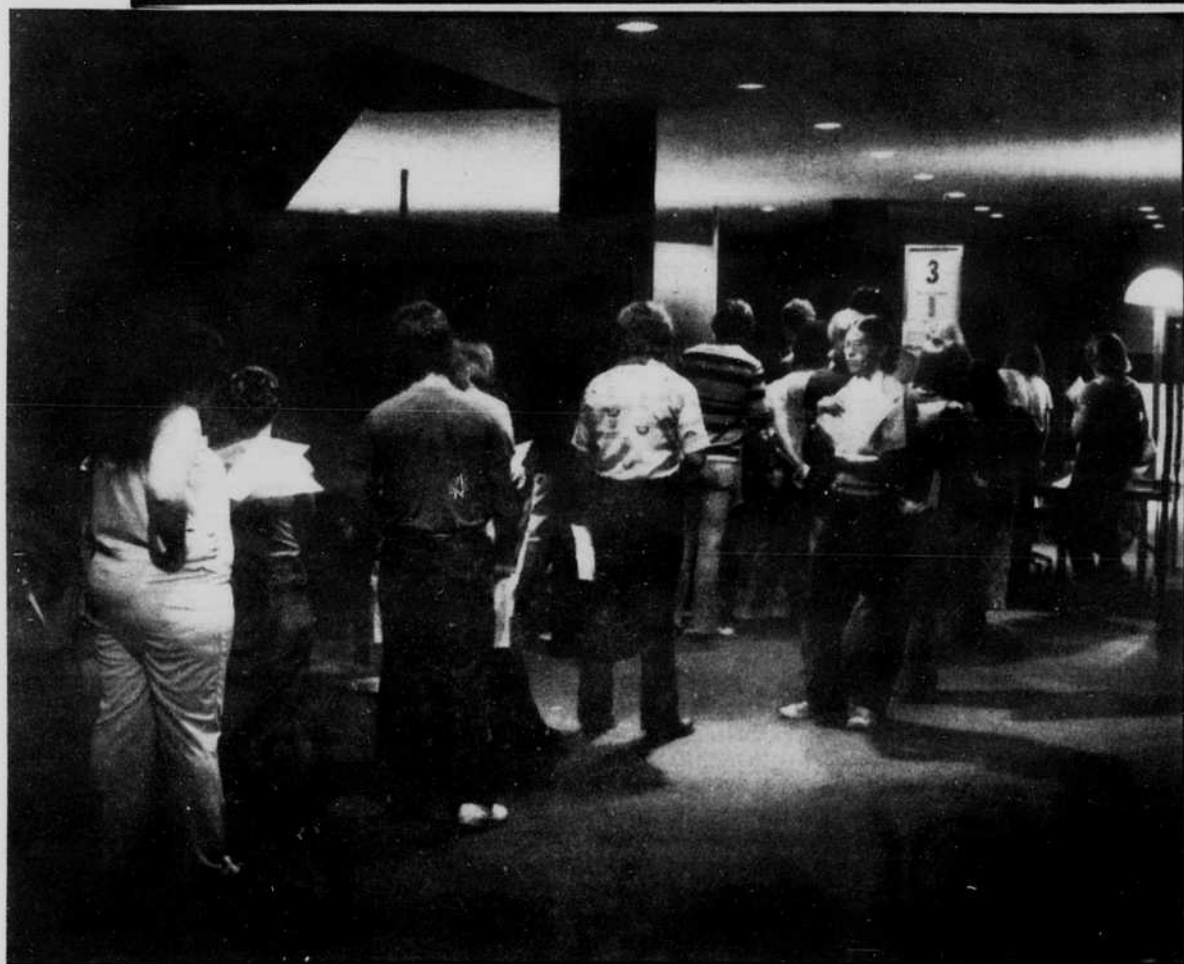


Champaign National Bank, BankPark & BankWest

PARK & RANDOLPH • SPRINGFIELD & RANDOLPH • SPRINGFIELD & BELMONT • CHAMPAIGN • MEMBER F.D.I.C.



After registration, it can only get better



After standing in this line, go to the next line, and then so forth. A familiar site during the beginning of school is lines. Lines, paperwork, and mass confusion are part of registration time. Add a computer breakdown or some such mishap and it leads to falling behind. But after it's all over, it almost feels like a battle was won. But then it's time to get books — and get in another line.



Photos by Carl Phillips

and Mark Sterkal



More music plays at PC

Several new sections of instrumental music classes will be offered to high school, university, and community persons this fall at Parkland College.

Community Band, NCR 582, will continue to meet weekly on Thursdays beginning August 23 in C148 at 7 p.m. This group is free of charge to anyone in the college district. Some instruments are available from the college. Registration is possible at the first rehearsal.

Tonight, at 7:30 p.m., a large jazz band (MUS146-80) will be organized in C148, and it is hoped that a weekly evening rehearsal will encourage strong community, high school, and university participation. One hour of credit will be earned and the group will meet from 7:30-10 p.m. every Monday.

Afternoon jazz ensembles and small combos, MUS 146, are also open to community participation. These groups rehearse Monday and Wednesday at 2 and 3 p.m.

Persons interested in jazz piano have two options. For college credit, students should take MUS 146-02 which meets four hours a week from 3-5 p.m. on Monday and Wednesday. Students interested in non-credit should take NCR 586 which meets two hours a week from 4-5 p.m. on Monday and Wednesday.

There will also be a group, NCR 587, which is open to all persons in the district who are interested in bluegrass and oldtime music. All stringed instruments are welcomed.

Other instrumental groups include Class Guitar, MUS 164, Advanced Guitar, NCR 588, Class Recorder, NCR 581, and beginning Class Brass, MUS 167. A variety of class piano sections are available which start at a beginning level and progress through two years of study.

The choral ensembles also invite community participation. The College Chorus, MUS 140, meets at noon Monday, Wednesday, and Friday. The Chamber Singers, NCR 586, rehearse Tuesday evenings at 7:00 p.m. For more information call the Parkland College Office of Admissions and Records, 351-2246.

A quiz from abroad

(Developed in association with the International Students Organization at Parkland College)

The purpose of this quiz is to promote discussion and interaction between U.S. Americans and foreign students. We are all "Internationals" and need to interact more frequently so that friendships can develop.

Choose the best answer.

- All of the following countries speak Arabic as the main language except for
a. Syria b. Egypt c. Lebanon d. Iran e. Saudi Arabia
- Somoza is
a. a small country in Latin America
b. the capital of one of the countries in southeast Asia
c. the past leader of a small country in Central America
d. a common food eaten in several African countries
- The capital of communist China is
a. Hong Kong b. Taiwan c. Peking d. Ho Chi Minh e. Mao Tse Tung
- The current Miss Universe is from
a. Sweden b. Venezuela c. United States d. Phillipines e. Lebanon
- President Carter and two leaders from Middle Eastern countries have worked together to sign a peace treaty between
a. Syria and Egypt b. Afghanistan and Poland c. Iran and Saudi Arabia d. Israel and Egypt e. Israel and Jordan
- Skylab fell mainly on
a. Africa b. Asia c. Mars d. Antartica e. Australia
- All of the following countries speak Spanish except
a. Brazil b. Cuba c. Columbia d. Argentina e. Chile
- Idi Amin is the former dictator of
a. Chicago b. Kenya c. Uganda d. Libya e. Nigeria
- The "boat people" are refugees from what country?
a. Phillipines b. Indonesia c. Viet Nam d. Korea e. India
- The main religion in Iran is
a. Hinduism b. Islam c. Christianity d. Shintoism e. Buddhism
- The Amazon River is found mainly in
a. Belgium Congo b. Nigeria c. Brazil d. Columbia e. India
- What country is the current world soccer champion?
a. Brazil b. Argentina c. Venezuela d. Iceland e. Chile
- The following are all *farewell* expressions except
a. khoda hafez b. aufwiedersehen c. hasta leugo d. nihauma e. adio
- The following are all *greetings* in different languages except
a. Bon jour? b. Que hora es? c. Salem a le cum d. Wie geht's? e. Yasu
- The following are all dances except for
a. Salsa b. Polka c. Flamenco d. Papaya e. Mashadi
- Polygamy is legal in
a. Korea b. Iran c. Venezuela d. France e. Indonesia

- The Pan American Games were held in
a. Puerto Rico b. Brazil c. Madagascar d. Cuba e. Mexico
- Which country is *not* a member of OPEC?
a. Saudi Arabia b. Egypt c. Iran d. Ecuador e. Libya
- The popular rock group called ABBA is from
a. Turkey b. Norway c. Germany d. Bolivia e. Sweden
- Which country is receiving the most oil from Alaska?
a. United States b. Russia c. Japan d. Canada e. Lithuania
- Edith Piaf was a well-known singer from
a. Istanbul b. Grenada c. Outer Mongolia d. Austria e. France
- All of the following countries now have different names except for:
a. Swaziland b. Tanganyika c. Belgian Congo d. Dahomey e. British Honduras
- The International Conference on Population was held in
a. Italy b. Brazil c. Tonga d. Sri Lanka e. Latvia
- The largest oil spill in history was off the coast of
a. Zimbabwe Rhodesia b. Chad c. Kuwait d. Mexico e. France
- The following has been replaced in President Carter's cabinet:
a. Secretary of Defense b. cups and saucers c. Secretary of Agriculture d. Secretary of Transportation e. Secretary of Interior

BONUS: The approximate number of International students at Parkland is
a. 40 b. 80 c. 120 d. 200 e. 500

Answers to the Global Awareness Quiz can be obtained by talking to several of the international students around Parkland. If you don't know any of them, use this quiz as an excuse for introducing yourself to them. They may not know all of the answers either, but together you can check what answers you have and get acquainted in the process.

You're also welcome to come to the International Students Organization which meets every other Tuesday. Watch for posters to see the time and program topic. There you can obtain all of the correct answers and meet many international students. When you discover the correct answers, count up your score to obtain your GAQ.

GAQ

(Global Awareness Quotient)

Score	Rating
25	Global Genius
23-24	World Wizard
21-22	Semi-Cerebral Scholar
17-20	Armchair Ambassador
13-16	Potential Potentate
10-12	Mini-Multinational
7-9	Diplomatic Dingbat
4-6	Cross-Cultural Klutz
2-3	National Nit-Wit
0-1	International Ignoramus

Honor students total 46

A total of 46 students at Parkland College earned a place on the honors list for the Summer Semester with a grade point average of 3.5 or more (4.0 is perfect).

CHAMPAIGN — Cheryl L. Baker, Mrs. Christine A. Conner, Robin L. Foley, Ross B. Johnston, Ruth A. Lee, Mrs. Tena M. Lewis, Barry C. McBride, Bonnie L. McLean, Mrs. Carol L. Strater,

Betty J. Taylor, Melba H. Ward. URBANA — Jeffrey S. Deem, Mrs. Glenna N. Evans, Fouad Handal, Douglas R. Mitchell, Leta L. Pepper, Mrs. Sandra L. Sapp, Mrs. Nancy J. Taylor, Robert S. Taylor, Mrs. Shirley A. Waters.

ARCOLA — Mrs. Mary F. Dilliner.

CISCO — Paula K. Lubbers.

DWIGHT — Carol Jean Parker

FAIRBURY — Kimberly J.

Hoffman, Karen L. Zimmerman FISHER — Patricia M. Kisters GIBSON CITY — Mrs. Lena M. Smith

HOMER — Mrs. Jayne F. Ward MANSFIELD — Mrs. Marsha S. Branson

MONTICELLO — Lori A. Petro, Elizabeth Stevenson

PHILO — Julia A. Hettinger

PONTIAC — Peggy A. Crego

RANTOUL — Mrs. Cynthia C. Barrera, Mrs. Brenda G. Combest, Jackie A. Howlett, Judy A. Marty, Mrs. Diana Pike, Julie L. Rodgers, Kathryn A. Rooney

SAVOY — Mrs. Beverly J. Tatman

ST. JOSEPH — Lisa L. Arteman

THOMASBORO — Jacqueline S. Loschen

TOLONO — Christina A. Billman VILLA GROVE — Mrs. Tracey L. Wolverton

WHITE HEATH — Pamela A. Steele

IOC will meet next Tuesday

The first meeting of the Inter-Organizational Council will be next Tuesday at noon in X-161. It is imperative each organization have a representative at this meeting.

Welcome Back Special



J Wide selection of books
U closed out by publishers

S 1/2\$ off original price

T IN—

PARKLAND BOOKSTORE



Arlo Guthrie

with Shenandoah

Thursday, Sept. 6

U. of I. Auditorium

STUDENTS: \$5.00

PUBLIC: \$6.00

tickets on sale at the illini union box office

STAR COURSE

Dupe dept. is expanding

Within the last seven years, the duplicating department at Parkland has expanded from a one-man, one press operation to a practically complete system.

And the man behind it all is Roger Herbsleb, who started in 1972 after an eight year stint at the University of Illinois.

There were many personal reasons—and several events at the U. of I. that were background to why he came to Parkland, said Herbsleb. Also, he saw the opportunity to build from the ground up.

"At the interview, (Parkland) told me they were planning a complete print shop," said Herbsleb. "Parkland afforded me the opportunity to buy the equipment that I thought we needed."

From the one press Herbsleb started with, the duplicating department has now "theoretically" three presses, and has expanded to collating, binding, cutting, and folding. "With the

space we have — we've grown about as far as we can right now," Herbsleb figures. "I don't see any other growth until the school is complete."

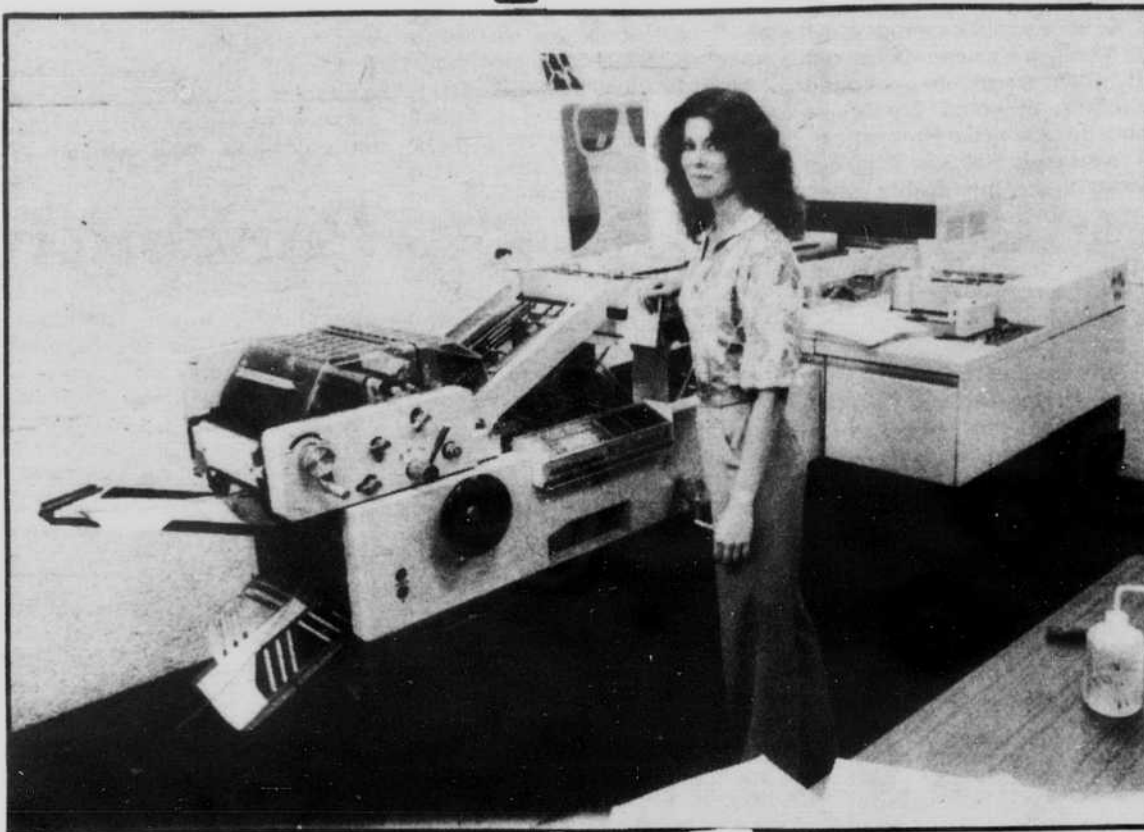
And since it has expanded this year, for the first year the duplicating department will handle all the copying and ditto work of the school. (All except the catalog, survival manual, faculty-staff pictorial directory, and the Prospectus). Sounds like a lot?

"We're nervous," said Herbsleb. "We know what we want to do, and how it should be done. But I'm sure it won't turn out like we want it to."

Herbsleb is also sure they will have to make adjustments, but just what adjustments he'll have to wait and see.

Besides the weekly duties of "Sprinkler," "Out There," etc., the department will run-off class notes and tests.

The faculty hands their tests to their secretaries who are to type



Sharon Mitchell works with the new offset press in the duplicating department. The addition of the new machine results in the dupe department handling almost all the printing and copying done in the college. (Photo by Carl Phillips)

VA rules upheld in courts

Veterans Administration rules governing schools participating in the popular GI Bill education benefits program have been upheld for the third time by upper level federal courts.

The latest case, before the U.S. Tenth Circuit Court of Appeals, involved VA's attempt to hold two Colorado schools liable for education benefits overpayments.

The law makes an educational institution liable if the VA determines the overpayments were caused by the school's failure to report excessive absences or dropping of courses by GI Bill students, or falso certification by the school.

The District Court had held the law governing school liability to be constitutional, and this ruling was affirmed on appeal. The Court of Appeals also said it found "no substance" to the claim that VA had interfered with the educational process in Colorado.

The Colorado case is the third involving the current GI Bill program to be decided in VA's favor above the federal District Court level.

Sixteen months ago the U.S. Supreme Court reversed a South Dakota District Court ruling involving veteran enrollment percentages and the minimum time a course must have been

offered before becoming eligible for enrollments under the GI Bill program.

More recently the Sixth Circuit Court of Appeals reversed a Michigan District Court ruling that VA lacked authority to define full time enrollment for the purpose of determining the proper level of GI Bill benefits.

them and take to the duplicating department. Then the tests are printed, collated, and ready 24 hours later. However there are stipulations — the tests should not exceed 20 pages or 200 copies. If they do, it will take five days.

"We had to make a cutoff somewhere," said Herbsleb. "The

idea of the system is quick turn around." If the test is more than the requirements, it will slow down the other tests following it, he says, so anything over the amount will be done on the older machine.

Although Herbsleb had been in the business for 23 years, the three people helping him have only been

here a couple of months. Two have been here two months, and the other has one month of "experience."

"They are three of the sharpest girls I've ever had," said Herbsleb. "I told them not to worry about mistakes — we'll learn by making mistakes."

ID rules listed

Identification cards are issued to all students at their initial registration, and a validation sticker is placed on the back of all student I.D. cards each semester at Parkland.

These I.D. cards should be carried at all times. They are used for voting in student elections and

the queen contest, admittance to athletic events and college registration, movies, special events and other purposes.

A lost I.D. card may be replaced in the I.D. Office at a fee of \$5. Times for securing a validation sticker and an I.D. card are posted at the I.D. Office (R-236).

Free Classified — in Prospectus



Food and Vending Service
for Parkland College

CHAMPAIGN, ILLINOIS
Division of Canteen Corporation

Welcome
Parkland
Students

Reliable
dual-purpose
MINI



YAMAHA GT80

Completely street legal with full instrumentation and lighting. This tough, little mini is built to take it. Wherever you take it.

\$549⁰⁰

Sportland

1602 N. Lincoln
Lincoln At Bradley
URBANA
328-5005

YAMAHA
When you know how they're built

Blum's
WEARHOUSE

A Better Way For You To Buy Fashion
ON-THE-MALL — DOWNTOWN CHAMPAIGN

Finally the Remodeling Is Over!

Blum's will reopen Tuesday with an exciting new merchandising concept... the same superior quality, contemporary style clothing

ALWAYS AT A SAVINGS OF 20%-50% less than you'd expect to pay elsewhere!

Cowl Neck
Fur Blend
SWEATERS
25th **\$17⁹⁹**

**CORDUROY
JEANS**
18th **\$13⁹⁹**

Turtle & V-Neck
Iridescent
VELOUR
20th **\$13⁹⁹**

Denim
JEANS
23rd **\$14⁹⁹**

Lurex Plaid
BLOUSES
16th **\$10⁹⁹**

Print
SKIRTS
23rd **\$14⁹⁹**

THESE ARE
A FEW OF THE MANY
VALUES FOUND AT THE NEW

Blum's
WEARHOUSE

Super Fall Clothing At Super Prices

ON-THE-MALL
DOWNTOWN CHAMPAIGN



Slick can hurt Midwest

If the huge oil slick spreading out from a broken Mexican offshore oil well continues to expand unchecked, it could produce a serious drought in the Midwest.

Wyndham J. Roberts, engineer emeritus at the Illinois State Water Survey ("Mr. Roberts" in the WCIA-TV weather department) said that if the runaway oil is not contained, it could cover half the Gulf of Mexico within a year.

"The gulf is the main source of moisture for the Midwestern and Eastern United States," he said, explaining that wind carries water evaporating from the gulf to the north, where it is returned to the earth in the form of rain and snow.

"If this source of moisture is cut

off, it could create a continuous drought," he said.

Roberts, a hydrologist, has done extensive research on reducing evaporation of water from water supply lakes by use of thin chemical films spread on the surface of the water. The thick layer of oil now polluting beaches along the coast of Texas is a greater retarder of evaporation than anything we have used in the Midwest," he said.

Although Roberts doesn't foresee the possibility of a drought occurring in less than a year, he said the problem is a serious one that needs immediate attention.

For one possible solution, he suggested a fleet of oil tankers be

sent to ring the area around the broken oil well, pumping up the mixture of oil and water. Once in the ships' tanks, he said, the oil and water could be separated and the

water pumped out.

"One wonders why this has never been suggested," he said. A joint Mexico-U.S. commission should be created to look into

problems such as this one, he said, and the Coast Guard, which is in charge of the oil-containment operation, should be allocated enough funds to do the job.

Parking regulations listed

Parkland College provides ample parking for all students, faculty and visitors. Campus parking areas A, B and C include over 2,000 parking spaces designated by white double lines. All vehicles must park in the spaces marked by white double lines.

Campus Security emphasizes

that parking is not permitted on perimeter roads, adjacent to curbs, or anywhere on campus not marked by white double lines.

In general, "open parking" prevails on campus in that a parking fee is not charged and most parking spaces are on a first-come, first-serve basis.

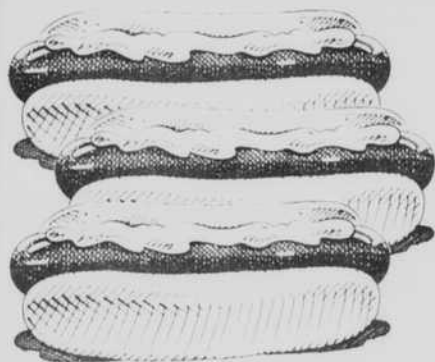
A few spaces are designated for restricted parking only. Only Parkland College vehicles may park in the spaces marked **No Parking, College Vehicle Only**. Only students with a physical disability requiring close access to the building and with a special parking permit may park in the spaces designated **Handicapped Parking**. Permits for parking in **Handicapped Parking** spaces must be obtained from the College Health Service Office, Room X202. Vehicles improperly parked in handicapped parking areas will be towed at the expense of the vehicle's owner.

Bicycles must be parked in the bicycle racks placed on campus.

Vehicles, motorcycles and bicycles in violation of the above parking regulations will receive a parking ticket. The fine for the ticket is \$3 if payment is made during the first week and \$5 if payment is made after one week. Failure to pay the fine may result in the withholding of grades, transcripts and other student records, and registration for subsequent terms may be denied.

For those students without cars, the local MTD bus line (the Brown line) serves our campus. Timetables are available at the information desk. For further MTD information, see their advertisement on page 11 of this edition.

THE DOLLAR STRETCHER!



THREE HOT DOGS,
\$1.09
ONLY

A special money saving offer for you from Wienerschnitzel. (Plain or Mustard, Chili or Kraut at additional cost.)

APPLY NOW FOR PART-TIME JOB!

2102 W. Springfield

GOOD THRU SEPT. 2, 1979

Use this coupon for up to five orders.



Wienerschnitzel & Hamburgers Too

TOP 10 LIST from WPCD Radio

1. My Sharona - The Knack
2. Good Times - Chic
3. Main Event - Barbara Streisand
4. After the Love Has Gone - E.W. & F.
5. When You're in Love - Dr. Hook
6. The Devil Went Down to Georgia - Charlie Daniels
7. Bad Girls - Donna Summer
8. You Can't Change That - Raydio
9. Mama Can't Buy You Love - Elton John
10. I was Made for Lovin' You - Kiss

Athletic schedules

GOLF SCHEDULE — 1979

DATES	OPPONENT	LOCATION
Th. Sept. 6	Parkland Dual	Here
Th. Sept. 13	Parkland Invitational	Here
Fri.-Sat. Sept. 21, 22	Danville Invitational	There
Fri.-Sat. Sept. 28, 29	Lincoln Trail Invitational	There
Fri.-Sat. Oct. 5, 6	Joliet Invitational	There
Fri.-Sat. Oct. 12, 13	Lincoln Land Invitational	There
Tu. Oct. 16	Regional IV Qualifying	Here
Fri. Oct. 19	C.I.A.C. Tournament	Here
Fri.-Sat. Oct. 26, 27	Regional IV State Meet	Here

CROSS COUNTRY SCHEDULE — 1979

DATES	OPPONENT	LOCATION
Sat. Sept. 15	All Comers	Here
Sat. Sept. 22	Chiefs Invitational	There
Sat. Sept. 29	DuPage Invitational	There
Sat. Oct. 6	Open	
Sat. Oct. 13	Parkland Invitational	Here
Sat. Oct. 20	C.I.A.C.	Here
Sat. Oct. 27	Regional IV	There
Sat. Nov. 10*	N.J.C.A.A.*	There

*Qualifiers Only

WOMEN'S VOLLEYBALL SCHEDULE — 1979

DATES	OPPONENT	LOCATION
Th. Sept. 20	Joliet, Lincoln	Here
Sat. Sept. 22	Lincoln, Spoon River	There
Mon. Sept. 24	Lewis and Clark, Lincoln	There
Sat. Sept. 29	Kankakee	There
Tu. Oct. 2	Danville	Here
Fri. Oct. 5	Lincoln Land	Here
Sat. Oct. 6	Sportsday at Eureka College (Eureka, ISU Ill., Lincoln, Olivet, Parkland, Principia)	There
Tu. Oct. 9	Lake Land	There
Wed. Oct. 10	Lincoln Trail	There
Sat. Oct. 13	Lewis and Clark, Spoon River	Here
Tu. Oct. 16	Kankakee	Here
Th. Oct. 18	Danville	There
Sat. Oct. 20	Thornton	There
Mon. Oct. 22	Lincoln Land	There
Th. Oct. 25	Lake Land	Here
Fri.-Sat. Oct. 26-27	St. Louis Tournament	There
Tu. Oct. 30	Millikin, St. Francis	Here
Fri.-Sat. Nov. 2-3	Sectional Tournament	There
Fri.-Sun. Nov. 9-11	Regional IV Tournament	Here



NAUTILUS OF CHAMPAIGN FITNESS CENTER IS GROWING

Now there are TWO NAUTILUS OF CHAMPAIGNS

Westchester Plaza

of 1710 W. BRADLEY

1/4 mi. East of Parkland College!

359-4353

University of Illinois Campus

BROMLEY HALL

910 S. 3rd St.

Champaign — 384-0704

Join NAUTILUS of Champaign and you will get:

- Complete Toning and Conditioning Programs
- Rehabilitation Programs
- Individual Programs Designed For Specific Needs
- In and Out of Season Conditioning For All Athletes

YOU WILL FEEL THE DIFFERENCE

IMPROVE YOUR

•Endurance •Flexibility •Strength

In Celebration of Our New Nautilus we offer

SCHOOL YEAR FOR

\$105 reg. \$125

1 SEMESTER

\$65 reg. \$75

OFFER EXPIRES SEPT. 9





Roueche suggests using videotapes of lectures

Do not be surprised if your teacher comes into the room with a videotape recorder under his arm and starts taping his classroom lectures. If any teacher takes the advice of John E. Roueche, that is just what might happen.

Roueche, director of Community College education at the University of Texas-Austin, spoke to teachers at a workshop last Friday in the gym. Roueche's topic was on student retention and the worn-out teacher.

However, Roueche cares "more about achievement than retention."

"When they come to school, students learn, they're competent, and they leave," said Roueche. "The best thing you can do for the student is teach him."

"Most teachers don't understand why a student does what he does," continued Roueche. He says teachers get frustrated because students are not behaving the way the teachers would like them to.

Students behave off of real feelings, says Roueche, and that is why it is imperative to pay attention to what the student is telling non-verbally.

If a student is falling asleep, perhaps a videotape of the teacher's lecture would help the teacher understand why students get bored.

"If half of my class was falling asleep," said Roueche. "And I looked at the videotape of myself and started falling asleep," well...

"The worst thing is to ignore behavior," Roueche said. "It is imperative to stop it Monday."

One trick to get a student "back on your wavelength" is to mention the student's name.

"This is why I say to learn the names of students," said Roueche.

To mention the student's name, not really asking that student specifically, just working his name into the lecture is a sure-fire attention grapper.

However, the problem with a deficient student may not be the teacher, but the student himself. If a student can not read and write, then there is no way he can be proficient in college.

"That is why there should be an assessment before enrollment and registration," says Roueche. The assessment would level the student to the best classes for him. If he is poor in an area of study, then he should be put in a class that would develop that deficiency, and then he can advance to the class he needs for credit.

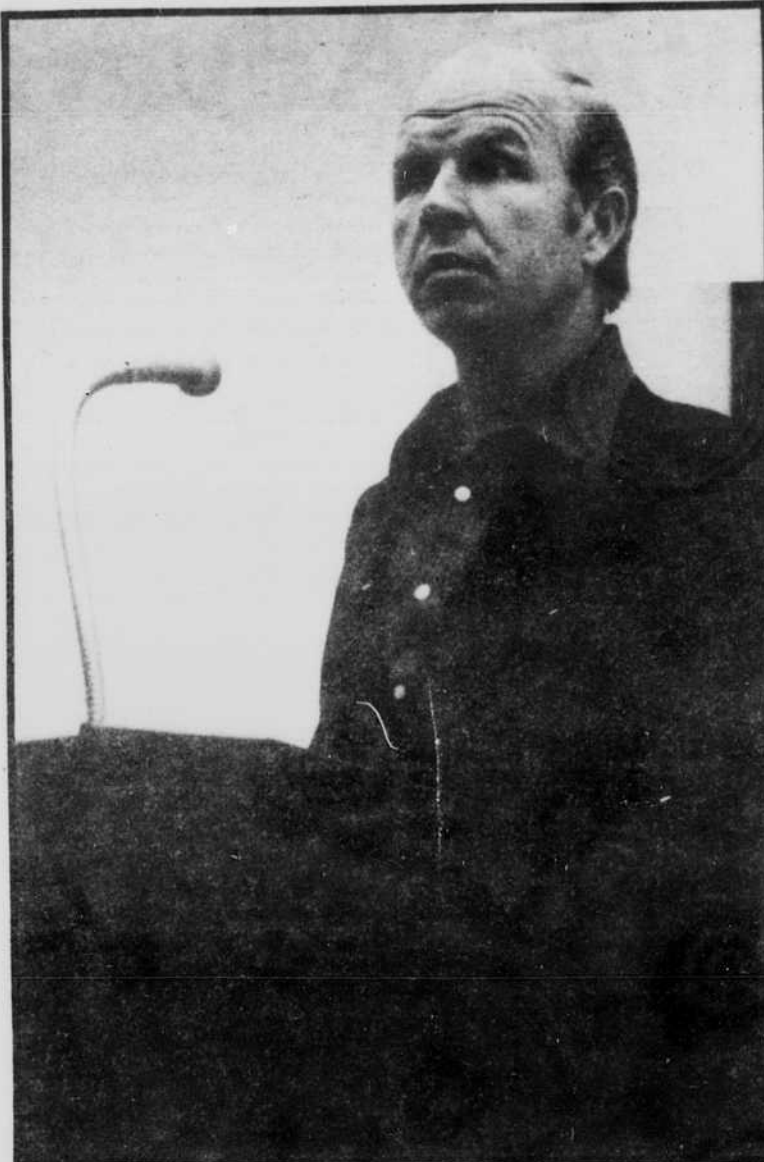
Roueche did emphasize having the student learn what is necessary. If a student is in Auto/Farm/Diesel, for instance, he should learn the language that is functional in his field.

"The worse thing you can do for that person is put him in a class where he would have to design a sentence," said Roueche.

Roueche says he will see Monday if Parkland students can read well enough to be in classes.

An interesting study Roueche revealed — in ninth grade, students are at the highest reading level. The first highest gains in reading is in first grade, the second highest is in second grade, and so on until sixth grade.

The sixth, seventh, and eighth grades tend to be the reading level used by many periodicals and books. After the ninth grade, high schoolers and college students are reading texts on these levels. Magazines and newspapers are written on these levels. Hence, the dropoff of reading ability.



John Roueche gives a questioning look to a question from the audience of Parkland teachers. Roueche spoke and answered questions about student retention and what the teacher could do to help stop the drop-outs. His speech was just one part of an all-day workshop the teachers participated in last Friday.

(Photo by Carl Phillips)

It's like playing bridge, which Roueche says he used to play regularly — "Now, I don't know if an Ace or a three is better," he said. The loss of reading ability follows the same depletion.

But after all tests and studies of the student have been completed and the student is proficient — and he is still bored in class, "that's where the videotape comes in."



25c off
Medium
**PEACH
SUNDAE**

AUGUST 28th ONLY



Stores at
1209 N. Prospect
3rd and Green
1903 Philo Rd.

Pres. Staerkel greets students

It is a pleasure for me — on behalf of the faculty, staff and Board of Trustees, to welcome you to Parkland College. The 1979-1980 term will be Parkland's 13th year of existence, and the College continues to develop and progress. An outstanding feature of the new year will be the completion of our outdoor recreational and physical education facilities. The new facilities will provide a 400 meter track, baseball and softball diamonds, tennis courts and an archery and golf range.

Parkland has much to offer — superb facilities along with a great variety of programs. Its most important asset, however, is a faculty rich in experience and degrees, all of whom have a deep and abiding interest in you and your future welfare.

I sincerely hope that you have a satisfying and rewarding year.

WILLIAM M. STAERKEL
President

8-21-79

PC lists job opportunities

For those students looking for part-time employment during the school year, the Parkland Placement Office keeps a record of work opportunities available.

Any student who is interested should contact the Placement Office and fill out the necessary forms in order to be recorded in the employment file.

Another service of this office is the publication of a bulletin, "Out There," which lists job descriptions of both part-time and full-time positions.

In order to be employed part-time as a student assistant for Parkland College, a student must be enrolled full-time (12 hours or more), have a GPA of not less than 1.7, and have completed a mini-

mum of 12 credit hours the previous semester. The only exception to this is the student who is enrolling at Parkland for the first time.

For further information on student employment regulations, contact the Placement Office.

**PROSPECTUS
distributed free
every Wednesday**

Additional copies available
in X-155.



Innsbruck Lodge

- Nearest Motor Inn to Parkland College, perfect for your out-of-town guests.
- Restaurant serving Breakfast, Lunch, and Dinner daily.
- Happy Hour in the Hunt Room. Mon.-Fri. 4:30-6:30 p.m.
- Banquet Rooms available for all occasions serving groups from 20-250.
- Champagne Brunch served every Sunday from 11:30 a.m.-3:00 p.m.

MAKE RESERVATIONS NOW FOR ALL SPECIAL PARKLAND COLLEGE EVENTS

Phone 398-3800
Corner Bradley and Mattis



Classified Advertising

• **Help Wanted**

ALL FILM ARTISTS—PROSPECTUS needs photographers. A chance to display your talents weekly. Come to X-155.

CONSUMER ACTIVIST

State-wide citizen lobby now seeking hard-working interested people to build fund-raising staff. Help work for substantial legislative reforms in utilities, property taxes, and housing.

EARN A LIVING WHILE WORKING FOR ECONOMIC & SOCIAL PROGRESS

1-10:30 p.m. \$150/weekly
Full or Part-time

Call 9-12 356-1604
for interview

ACCOUNTANTS/BOOKKEEPERS — or if you're good with numbers and handling clients. We need YOU. Prospectus, X-155, looking for Business Manager.

GRAPHIC ARTIST? Unknown cartoonist? Show your talents in PROSPECTUS. Work as a staff artist, make a few extra bucks.

• **Help Wanted**

Part-time work, on campus, distributing advertising materials. Choose your own schedule, 4-25 hours weekly. No selling, your pay is based on the amount of material distributed. Of our 310 current campus reps, median earning is \$4.65 hourly. No special skills required, just the ability to work consistently and energetically without supervision. For further information, contact American Passage Corporation at 708 Warren Avenue North, Seattle, Washington 98109 (206) 282-8111

• **Wanted to Buy**

WANTED—10-speed men's bicycle in good condition. Medium-sized dining table w/wo chairs. 384-9011 after 4:00 p.m.

• **Apartments to Sublet**

SUB-LEASE NOW THRU NOV. 1 or write new lease. One bedroom living room, kitchen and bath. Furnished. Private entrance. Very quiet. Close to Parkland. \$90 month, \$40 damage. Call 352-2050 or 1-578-3228.

• **Meetings**

FOR PROSPECTUS STAFF MEMBERS AND ANYONE INTERESTED IN JOINING—a meeting will be at the PROSPECTUS office, X-155, at 11 a.m. Wednesday. Be there! Special invitation to new students who have worked on their school paper or yearbook.

ADVERTISING POLICY

All ads submitted must comply with the following regulations to appear in the Prospectus

1. All advertisers must substantiate offers and claims made if requested to do so by the Prospectus or the Publications Board of Parkland College.

2. Advertisement content will be considered in its entirety as it would be by the consumer. That is they must be truthful in each statement as well as the general impression created; free from hidden meanings and second impressions.

3. Only testimonials that are sincere and honest will be allowed and must be free of exaggeration and misrepresentation.

4. All ads must comply with The Federal Trade Commission Act, The Wheeler-Lea Act and all other applicable federal regulations.

5. All ads must comply with the Illinois "Printer Ink" statute which prohibits untrue assertions, representations, and deceptive or misleading statements of fact, and all other applicable Illinois statutes or regulations.

Within the above constraints and regulations designed to prevent deception and promote high advertising quality for the Prospectus, the advertiser is free to say what he wants to say, the way he wants to say it.

Classified Advertising Order

(PLEASE PRINT)

ADVERTISER'S NAME _____

ADDRESS _____

Phone No. _____

Please run the following ad in the _____

classification: _____

NO CHARGE TO PARKLAND STUDENTS, FACULTY, STAFF

RUN MY AD _____ TIME(S)

CLIP AND BRING THIS AD TO PROSPECTUS OFFICE (X-155) NO LATER THAN 12 NOON FRIDAY FOR WEDNESDAY PUBLICATION



Highlander Coin Laundry

Drop off laundry and dry cleaning service. In by 9, out by 5.

1724 West Bradley
Across from Kraft
Phone 356-6300

New organization 'flocks' with others

A new organization has joined the 43 other organizations at PC this year. The "Little Flock Bible Study" makes its debut Wednesday at 11 a.m. in X-218 (behind the TV lounge).

Says Dan Browning, a member, an emphasis is placed on the daily relationship among people — they call it the daily walk.

"We try not to elevate ourselves

over anyone," says Browning. "Christians, non-Christians — anyone can come. It's not (where we point out someone and say) 'You can't come.'"

The group also plans a short prayer meeting every Monday, beginning today, at 11 a.m. in the same place.

All Parkland students, faculty, and staff are welcome to come.

Tenant Union plant sale will be held next weekend

The Tenant Union and the C-U Student Association are sponsoring a plant sale to be held on the University of Illinois campus on Sept. 1, 2, and 3.

The plant sale is open to the public. The proceeds from the sale will be used to assist tenants with their problems through the efforts

of the Champaign-Urbana Tenant Union.

Thousands of bedding, blooming, flowering, and house plants will be on sale in the U of I Stock Pavilion, 1300 W. Pennsylvania Ave., Urbana, from 9 a.m. to 6 p.m. daily. Free plant care guides will be available without purchase. For more information call 352-6220.

Tickets are on sale on operas

Season ticket sales for Illinois Opera Theatre's four 1979-80 productions at the University of Illinois will end with the final performance of Verdi's "La Traviata" Sept. 15.

Performances of the Verdi opera are scheduled for Sept. 7, 9, 13 and 15, and will be followed by Puccini's "Madame Butterfly," Nov. 15-18; Mozart's "Don Giovanni," March 6-9, and Rossini's "The Barber of Seville," May 1-4.

All performances will be at 8 p.m. in the Festival Theater, Krannert Center for the Performing Arts, except Sunday performances, which are at 7 p.m.

Tickets for the series are available at the Krannert Center ticket office.

Women's b-ball to have meeting

All women interested in joining the Parkland intercollegiate basketball team should attend a meeting at noon, Sept. 6 in P-104.

COUPON

Agfa Brovira Paper

Grades 2, 3, 4
25 5 x 7 sw sheets
Regular \$3.15/package

2 packages
for \$5.00 w/coupon

Erber's Inc.
608 E. Green/ Campustown

Offer expires Sept. 25



COUPON

Kodak Tri-X Film

Package 20 rolls TX
135-20
Regular \$30.20

\$23.00 w/coupon

Erber's Inc.
608 E. Green/ Campustown

Offer expires Sept. 25



COUPON

Rowi Blower Brush

Regular \$2.25

\$1.69 w/coupon

Erber's Inc.
608 E. Green/ Campustown

Offer expires Sept. 25



* ALL ITEMS LIMITED TO QUANTITIES IN STOCK. SUBJECT TO PRIOR SALE.

ERBER'S, INC.
Camera Shop
608 East Green St.
Champaign, Illinois 61820
217/352-2741



SEKAI



... Ask the person who owns One!

Don't buy a new bicycle 'til you've checked out Sekai — the bikes with unmatched components, value, and reputation.

CHAMPAIGN CYCLE CO.

506 S. Belmont
352-7600



403 E. Green
328-1221

Prospectus Staff

Editor Tom Schmitz
Advertising Manager Crystal Heit

Sports Editor ... Pete Rosenbery

Photography Editor Carl Phillips

Photographer Mark Sterkal
Reporter Randy Strebing

Layout Roger Pappas
Front cover by Carl Phillips

Published weekly during the school year by students of Parkland College and for the Parkland College Community. Production by Garfield Press of Champaign. Display advertising rates are available upon request — phone 351-2266. Classified advertising is free to members of the Parkland Community presenting valid identification with submission of material. Letters to the Editor and unsolicited stories are welcome. They should be typed, double-spaced and preferably in 60-character lines. Letters must be signed and will be validated before printing, but name will be withheld upon request. The right to edit any submission in respect to good journalism is reserved.



Organizations cont. from page 12

Nursing Student Association—The objectives of the Nursing Association are to cultivate, promote and sustain the science of nursing through recruitment; supplement educational growth through informal learning; and foster good citizenship. In addition, the Association provides a vehicle for awareness of student needs, opinions, attitudes, and social growth.

Parkland Christian Fellowship Society—The society endeavors to lead students to the commitment of Jesus Christ and to nurture members of the society in their personal Christian life and faith. The members also strive to aid Christian growth and encourage Christian outreach.

PATH (Parkland Association for the Handicapped)—This organization was established to assist students with disabilities to develop a commonality of purpose and increase socialization. The group strives to improve the social environment for the disabled and assist the College in understanding the disabled person.

Peace and Social Awareness—This group provides discussions of political, economic, social and other related issues; provides information on many topics; and develops relevant functions beneficial to the College community.

Phi Alpha Chi (Agriculture)—Phi Alpha Chi was founded to further a true fraternal spirit among students in agriculture, promote the cause of agriculture in present and future citizenship, leadership roles, and democratic practices in the community and the College environment.

Phi Beta Lambda (Business)—This organization creates interest in and understanding of the many business occupations through involvement of members in the improvement of home, community, and college life. Phi Beta Lambda has initiated the "Casino Nights",

participated in state and national activities and is very active in the social and intellectual life of the College.

Phi Tau Rho (Trail Riders)—The purpose of this specialized group is to assist students in motorcycling riding techniques and repair and safety of their cycles. Also, Phi Tau Rho conducts social events in addition to their educational activities for cyclists.

Pi Sigms Iota (Auto-Farm)—This organization composed of students in the auto-farm technology curricula, is concerned with the promotion of the auto-farm technology field, development of better relations between faculty and students, and establishment of higher academic standards. Ph Sigma Iota is concerned with the attitude of the total student body and the local communities relative to the College and its role in the community.

Radiologic Technologist Society—This profession organization promotes interest in the radiologic technologist field through awareness of student needs, opinions and attitudes. The society strives to enrich the social, cultural and academic life of member students through planned programs, activities, and social functions.

Recreation Society—The society aims toward assisting students interested in recreation and park development by planning practical functions and activities in related areas, acquainting members with leaders in the profession, providing opportunities to participate in community projects and planning, and improving professional growth and development.

Republican Club—The purpose of the Republican Club is to promote and develop knowledge and understanding of the Republican Party, its program and principles. The club will serve the College, local, state, and national governments by developing a better understanding of the

issues, problems, and concerns of present day society.

Respiratory Therapy Student Association—The association offers students the opportunity to share and expand new concepts in the field, recognize and be aware of job availability and future educational programs, promote community awareness of respiratory therapy, and provide a means of getting acquainted in a social atmosphere.

Riding Club—The Lucky Busters promote student interest in the art of horsemanship, acquaint students with the opportunities in the horse industry, and strive toward education of the local communities relating to horse management and operation.

Sigma Theta Omega—This sorority is established for the purpose of promoting a better social atmosphere at the College and acts as a service organization for campus and community functions.

Sigma Theta Phi—The fraternity desires to establish a fraternity of men who will increase their skills and capacities in service to their fellow students and community.

Sigma Zeta Phi—The prime purpose of this sorority is to develop and encourage students interest in college affairs, activities, and events. The sorority will constantly strive to improve the image of fraternal life on campus through its activities and functions.

S.I.S.T.E.R.—The prime objective of SISTER (Students Interested in Sisters' Total Equal Rights) is to promote the awareness of the problems and concerns faced by women in our society. SISTER develops programs and activities to better inform the College community of the importance of women and their role in our ever-changing world.

Ski Club—The Ski Club or the "After 4 Club" was founded to provide opportunities for all Parkland students to enjoy winter sports, especially skiing.

Sociological Association—This club unites students interested in the application of sociology by planning seminars and field trips which pertain to topics of current interest.

Sports Car Club (Road Rally)—This organization was founded by interested students desiring to participate in car rallies in the College district. A sports car is not a requirement, just an interest in cars, recreation, and safety. This group is composed of novices as well as semi-experienced road ralliers.

S.W.A.M.P.—This organization was established by Students Working Against Man's Pollution in order to further open discussion of environmental problems and to make possible relevant activities with regard to such issues.

Tau Epsilon (Data Processing, Computers)—A social organization of students interested in data processing and computer science. Tau Epsilon also serves as a service organization to the College.

Veterans' Association—An organization established to further the benefits of veterans and/or families of veterans attending college, the Vets shall provide an environment for social, cultural and educational rewards as agreed upon by the membership of the organization.

Wax Stackers—This organization was founded to give an outlet for students with professional interest and goals in broadcasting. The club strives to open avenues for professional development in broadcasting with specific "hands-on" experience with the college's radio station, WPCD-FM.

CHAMPAIGN-URBANA MASS TRANSIT DISTRICT PRESENTS



"BUS RIDE"



A story of the finest transportation in Downstate Illinois. Starring 70 of the safest driving, most people-pleasing drivers you've ever encountered.

This multi-vehicle attraction is shown from:

5:45 a.m. to Midnight, Monday thru Friday

5:45 a.m. to 6:30 p.m. Saturday. Remember, no buses operate Saturday evening.

8:15 a.m. to 5:00 p.m. Sunday

Exact fare is required after 7 p.m.

This feature is presented in all new ride-a-vision!

For exact times and locations, call

The Mass Transit District at 384-8188

Admission 30c. Pay at the door!

Plan to see it at a corner near you. You'll want to experience it more than once.



For route and schedule information
 Call 384-8188



Student organizations listed

Animal Health Technology Association (Veterinary) — The association offers students the opportunity to share and expand new concepts in the field of veterinary medicine, recognize and be aware of job opportunities, promote educational advancement, assist in continuing education, and benefit from social and recreational growth.

Art Association — The purpose of this organization is to provide a means whereby students interested in art may express themselves through the arts; provide an increased opportunity for the furtherance of the individual art student's education and career; and establish an awareness of the arts in the students, faculty, and community.

Astronomy Club ('78-'79 Organization of the Year) — The Astronomy Club provides a medium for exchange of ideas relating to astronomy, a means of observation and photography of celestial objects, and a social and educational atmosphere for increasing knowledge and understanding of the universe.

Black Student Association — The BSA has been established at Parkland College to improve and unite all aspects of student life, to gain better representation of black students in campus affairs, and to establish a liaison with other black students at secondary and college levels. The BSA offers information to the College community through seminars, forums, and social affairs highlighting philosophy, attitudes and interests of its membership.

Bridge Club — This organization is established to provide an opportunity for students to learn the skills of bridge, instruct beginners in bridge, conduct tournaments for the improvement of bridge playing skills, and provide a leisure

time activity for all members of the College community. The club emphasis is on improving one's bridge skills through duplicate bridge, clinics and cooperative instruction.

Campus Crusade for Christ — An organization formed by students who have accepted Christ as their personal savior, this group endeavors to place Christ in its everyday life and encourages students to place their trust and life with Christ.

Chess Club — The Chess Club strives to teach students interested in chess; provides an opportunity for the advanced player to improve his/her skills; provides facilities to play chess on campus; and provides the opportunity for students to distinguish themselves in tournaments.

Chi Theta Alpha (Construction Technology) — This is an organization established to provide a means of expression in construction technology educational affairs; express needs, opinions, and attitudes of members; and develop programs and activities to enrich the life of the College community.

Democratic Club — Students interested in promoting and perpetuating the ideals and principles of the Democratic Party are encouraged to participate in the Democratic Club. Programs will be developed by students to increase knowledge and interest in governmental affairs and acquaint the student body with candidates and present-day issues.

Dental Assisting — This association's aim is to promote the education of the dental assistant, to improve and sustain the vocation of dental assisting, and to contribute to the advancement of the dental profession and improvement of public health.

Dental Hygienist's Association — The objectives of the Dental Hygienist's Association are to cultivate, promote, and sustain the art and science of dental hygiene; to represent and safe guard the common interest of the members of the profession; and to contribute toward the improvement of the health of the public.

Electronics Association — This association was founded with the purpose of: promoting the electronic field through educational programs relating to electronics, assisting in locating employment opportunities, establishing open work and study laboratories, establishing both an amateur radio and commercial radio broadcast station, sponsoring related field trips, and providing social and athletic activities for its membership and guests.

Gun Club — The Gun Club offers instruction to students in gun safety, marksmanship, appreciation of the shooting sports, selection of guns and their values, and conservation of wildlife.

Horological Society — This specialized organization provides students with a means of expression and encourages and promotes interest in horology and other related fields and activities (clock making—watch making, microprecision, etc.).

International Students Association — This association was founded to assist the foreign students of Parkland College in adjusting to the college community and to assist all students in the better understanding of foreign culture and life. The students encourage membership in the association for all members of the college community, not only international students.

Karate Club — This organization provides the opportunity for students to learn the art of karate and methods of self-defense. There is no restriction to membership—just the desire to learn a new skill and become proficient in a very popular physical activity.

Law Enforcement Club (Theta Epsilon) — The Theta Epsilon Chapter of Lambda Alpha Epsilon is a professional law enforcement fraternity. The Thetas strive toward understanding and better communication between agencies of criminal justice and citizens, and improvement of relationships between institutions of higher education and professional agencies of criminal justice. To fulfill these objectives, the fraternity's functions incorporate social, educational, and informational aspects.

Music Association — This association is constantly alert to the needs of the community relating to music and strives toward providing and encouraging musical concerts and activities on the Parkland campus. The members also have the opportunity for contact with leaders in musical profession through clinics, seminars, and performances. The association also provides an avenue of fellowship for its members in the musical profession.

Newman Club — Within the academic framework of Parkland College, the Newman Club seeks to provide spiritual and educational opportunity for all. Here, the Newmanite becomes more thoroughly aware of the Church's teaching and its significance in the world through guest speakers, lectures, lively group discussion and social activities. Although the Newman Club is dedicated primarily to Catholic students, it is open to those of all faiths.

Fast Freddy forecasts again

Fast Freddy Contest

1. Everyone, off campus or on, except newspaper staff members, their families and Fast Freddy, is eligible.
2. This official entry blank must be used.
3. Only one entry per person will be accepted. Entries sent through the campus mail system will NOT be accepted. Entries must be brought to PROSPECTUS office (X155) in person or by U.S. Mail.
4. No individual can win the contest prize more than twice during the season.
5. All entry blanks are due in the PROSPECTUS office by 12 noon on the Friday before the games. No entries will be accepted after this time under any circumstances.
6. The winner will be announced in the following Wednesday's PROSPECTUS and will receive a cash prize of \$5.00.
7. Circle the team you think will win in each game. Circle both teams for a tie. The tie-breaker games will be used only in case of ties and will not count in the total of twelve games to be predicted. Pick a score for the tie-breaker game.

Winner is Person who selects the most game-winners correctly.

- | | | |
|--------|-------|--|
| Game 1 | | Southern Illinois vs. West Texas State |
| Game 2 | | New Mexico State vs. Wichita State |
| Game 3 | | LSU vs. New Mexico |
| Game 4 | | Arizona vs. Colorado State |
| Game 5 | | Drake vs. Indiana State |
| Game 6 | | Northern Michigan vs. Eastern Michigan |
| Game 7 | | Green Bay vs. Chicago |
| Game 8 | | Oakland vs. Los Angeles |
| Game 9 | | San Diego vs. Seattle |

Tie-Breaker (pick a score)

Eastern Illinois () vs. Northern Michigan ()

Name _____

Phone _____

Address _____

Fast Freddy is back!

Starting with this issue and running till the end of the semester, I'll be choosing the toughest college battles from around the nation to see just how good Parkland students are at predicting winners. I'll also be keeping tabs on myself besides analyzing each contest so everyone can see how accurate I can be.

The rules to the contest are simple. Just fill out the entry blank with the games of the week. Circle the team you think will win on the first nine games and then pick a score on the tiebreaker. Hand in the entry form to the PROSPECTUS office (X-155) before 2 p.m. on Friday to be eligible for that weekend's contest. Whoever is correct on the most games including the tiebreaker will win \$5.00. In case of a tie, the money will be split. So let's get on with the first Fast Freddy for 1979.

The first game on the schedule will be Southern Illinois against West Texas State, a team they beat 17-3 last year. Backed by the quarterbacking of John Cernak and running back Bernell Quinn, the Salukis will try to improve on it's second-place Missouri Valley finish of a year ago. Look for the Salukis to win its conference opener 25-9.

In another MVC contest, New Mexico State will entertain Wichita State and new coach Jeff Jefferies. NMS surprised everyone last year by winning the title in coach Gil Krueger's coaching debut. But gone from that team is Aggie quarterback David Spriggs, who passed for over 2,500 yards. Look for the Aggies by six, 19-13.

Eastern Illinois has second-team All-American Poke Cobb, a 1,130-yard, 16 TD performer back for the '79 season as the Panthers try for another Division II title. Along with Cobb return 20 of 22 starters

for EIU, including quarterback Steve Turk who threw for just over 2,400 yards. The Panthers will start the year off right with a 35-7 win over Northern Michigan.

LSU is coming off an ordinary 8-3 season in its opener against New Mexico. LSU should win this one handily 28-10.

In other Fast Freddy predictions — Arizona defeating Colorado State by five; Drake over Indiana State by twelve, and Northern Michigan over Eastern Michigan, 28-10.

This week, due to the limited college football schedule, I've thrown in three opening-season games around the NFL, including the biggest and most meaningful rivalry around — Green Bay against Chicago.

I admit that I don't see how the Bears have remained unbeaten through the preseason, (3-0 at the time) but the biggest question is how Green Bay has won twice scoring just 26 points. An ineffective offense will screw up the defense sooner or later and the Packers had better hope for some help from Lynn Dickey who sat out the '78 season with an injury.

The Bears, who have three usable quarterbacks, may find themselves with some defensive problems, especially at middle linebacker. After cutting former Illinois standout John Sullivan, the Bears find themselves with just two, Nebraska rookie Lee Kunz and Tom Hicks, another former Illini with injury problems. But the Bear offense is more intact than the Packers so look for a 24-17 Chicago win.

The other two games on the schedule find Oakland, who has been having problems with Kenny Stabler, against Los Angeles, who have been having problems in the front office. But the fact that the

game will be in the Coliseum will be enough for the Rams to win, 27-24.

San Diego will travel up to the Kingdome to face Seattle, who should no longer, along with Tampa Bay, be considered expansion clubs. Backed by the passing duo of Jim Zorn and Steve Largent, the Seahawks just missed making the playoffs last season when they lost to Denver on an overtime field goal by Jim Turner. A penalty for 12 men on the field gave the Broncos another shot for the win after Turner missed the first chance. San Diego is just a couple of seasons away from having a winner. The Seahawks by two touchdowns, 31-17.

PARKLAND PROSPECTUS
 2400 West Bradley
 Champaign, IL 61820

Nonprofit Org.
 U.S. Postage
 PAID
 Champaign, Ill.
 Permit No. 268