

**Bad Company in concert: a rock and roll fantasy**

**Table tennis whiz**

**Stugo goes to a surprising start**

**High on volleyball**

Editorials abound today. Criticism by the foreign students, and a critique over the poor vote showing. Answers to these are welcome in letters to the editor. Page 2.

D. J. Lee amazed the Parkland crowd at his exhibition in the game room last week. With the inclusion of table tennis in the Olympics, Lee sees a bright future for the sport in the U.S. See page 8.

Volleyball makes its debut tomorrow in a triangular at home. Game time is 4 p.m. in the Cobra gym. Preview on page 8.

Bad Company made their appearance at the Assembly Hall, Sunday. Capture them live all over again on page 3.

The All-Comers cross country meet brought all kinds of runners. But Olympian Craig Virgin, who was "going to

have fun" that day, pulled some surprises. U. of I., S.I.U., and Parkland runners also made it a respectable meet. Photos and story on page 5.

The rising price of gold leads to some interesting circumstances. Read what a local merchant has to say on page 4.

Your Stugo officers are listed on page 2.



# Parkland—a king's palace

by Thomas Goba

"I will build a palace in the richest and most powerful country in the world," said the king. "I will open its doors to all. I will show my subjects what a good king they have. There will be plenty to eat and drink. I will call my palace — PARKLAND," he concluded.

Parkland College was established in 1966. During these years, gigantic academic strides have been made. The name Parkland rings a bell in the ears of people interested in academic pursuit. From the outside, the buildings resemble detached farm houses, but the inside breathes academic excellence and performance.

About a year ago, the king opened the doors of his palace, Parkland, to international guests to partake of the academic food. The foreign guests brought with them color, experience, culture, and diverse

backgrounds from their respective countries. This has helped to create an atmosphere of good-will, friendship, and international understanding on the king's courtyard—the campus of Parkland. The exchange of ideas has helped to dispel doubts about academic competence.

In his eagerness and enthusiasm to invite foreign guests, the king forgot to make proper arrangements for food. The king forgot that some of his guests were vegetarians.

Parkland College has taken the big-brother status among junior colleges in the States. It has all the potentials of being a big, popular academic field for the king's foreign guests. But the question arises: Was Parkland College ready for foreign students?

Foreign students on campus are the ambassadors of their respective countries. They can break or make Parkland to the outside world depending on the news they

send out or take back. Having traveled thousands of miles to Parkland is an indication of the admiration they hold for the college. International students come from different cultural, educational, and economic backgrounds. If they had paid so much, and had traveled so far, is the college going to dampen their academic spirit by not meeting them half-way?

This semester there are one hundred and thirty International students on campus — this is a great achievement by any standards. How many junior colleges in the U.S. can boast of such a high number?

I have not found any differences in meaning for the word student in any book. A student is a student even in Hell. The International students are saying, "we want to be part of this great institution. Help make our stay memorable." You may ask, "How?"

One of the ways is to provide jobs on campus for these ambitious young men

and women who have traveled so many miles from their countries. That is all they ask. By Jove, even hardened criminals are helped to become good citizens. We make the rules and we also make provisions for amendments.

Parkland College is a great educational institution. It could be made greater and have its name placed on the academic records of the U.S. as the junior college that helped foreign students even in a small way. Even bread crumbs from the table can do. Parkland has a great collection of competent instructors whose academic performance is beyond reproach. Foreign students are proud to be a part of this great institution. The king had invited them to dinner. They appeal to the king to make the food palatable and an even distribution of the king's mercy and help. Let foreign students be part of the whole. Let the umbrella of help cover them and not leave them in the cold.

## Student elections lacks voters, candidates, and issues

Well, we just had another round of elections at Parkland College, and the same thing that has happened in nearly every elections past and present cropped up again — apathy.

Apathy on both the part of the candidates and the students rose to the top. By apathy on the part of the candidates, I'm not saying they didn't work hard or the winners won't represent the college well, but no issues were involved in the election when some could have justly been made. The candidates, myself included as a write-in, might have been able to make themselves more accessible to the student body. Most students won't vote unless they know the candidate personally, in which case, it turns out to be nothing more than a popularity contest.

But student government is also responsible for student activities like Cimmeron; D.J. Lee, the table tennis champ and all the movies that come this way, including Midnight Express which started on Monday.

For those of you who are interested, Rodney Keller was elected Public Relations with a 70-39 win over Dane Bundy. Three senators were also elected, out of three official candidates. The

winners were Jeff Bergstrom, Rae Ann Meyer, and Kirk Donovan. Michael Hughes is treasurer, Allen Finley was voted Athletics Senator and Melissa Carter was elected Student Services Senator. Also, Proposition 1, which dealt with the secretary being an appointed position, passed by an 81-25 margin.

Oh, by the way, if you were wondering about the percent of voter turnout in last week's elections, it was a vast 2 percent.

by Pete Rosenbery



### Highlander Coin Laundry

Drop off laundry and dry cleaning service. In by 9, out by 5.

1724 West Bradley  
Across from Kraft  
Phone 356-6300

### NATURAL-ORGANIC FOODS VITAMINS & MINERALS VEGETARIAN FOODS

WE CARRY WHATEVER YOU NEED FOR PREPARING NUTRITIOUSLY COMPLETE MEALS

MON.-SAT. 9:00-5:30

## DIETARY FOOD STORE

356-9624

802 W. John, Champaign

The students basically don't give a damn about Parkland or even themselves. This was demonstrated most clearly when just 140 students out of the over 7,000 attending took just five minutes or less of their time to vote. The people who eventually do get elected serve in the interest of you, the student. And if they didn't give a damn, then who would and what would you do then?

If there were no student government, such things as a sounding board for student complaints, no one to defend student rights, no services like the new share-a-ride center and upcoming check-cashing center would ever come about.

So you say, well, so what. I don't care about those types of things anyway.

### PARKLAND COLLEGE Results of Student Government Election Sept. 12, 13, 1979

- TREASURER**  
\*6 Michael Hughes  
2 John Lucas  
1 Phil Campbell  
1 Craig Nichols  
1 Mike Fields

- SENATOR—STUDENT SERVICES**  
\*8 Melissa Carter  
2 Bill Chambers  
1 Charlene Sysuzimak  
1 Janet Woll  
1 Evelyn Basille

- SENATOR—ATHLETICS**  
\*2 Allen Finley  
1 Terry Allen

- DAY SENATORS**  
\*77 Jeff Bergstrom  
2 Chris Denhart  
\*73 Kirk Donovan  
\*77 Rae Ann Meyer  
1 Dave Rousel  
1 Chuck Swallow  
1 Les Hall

- SENATOR—PUBLIC RELATIONS**  
39 Dane Bundy  
\*70 Rodney Keller  
5 Peter Rosenbery

- EVENING SENATORS**  
\*1 Mark Meyers  
\*1 Tom Bosch

- PROPOSITION #1**  
\*81 FOR  
25 AGAINST

TOTAL VOTES CAST—140

**AUTO & CYCLE INSURANCE**  
For Students and Staff  
Monthly Payment  
**Brya Insurance**  
Goldblatt's 356-8321

**50% OFF!**  
WHAT'S THE ANGLE?  
Just make an appointment for your first visit to the Hair Performers and we'll do the rest! We'll give you 50% off on . . .

HAIRSHAPING AIR FORMING REG. 115 NOW  
SHAMPOO IRON CURLING \$7.50 WITH THIS AD

The **hair performers**<sup>®</sup>  
THE HAIR PROFESSIONALS  
344-2424

LOCATIONS IN CHICAGO - ST LOUIS - PHOENIX

**IF YOU WEAR GLASSES WHY PAY HIGH PRICES?**  
Look ahead to a great semester with a new pair of top-quality glasses at low, low prices from **\$39.95 - \$59.95**  
Complete Frames & Lenses  
Prescriptions Filled  
Lenses duplicated  
Experienced optician on duty at all times

**the Eye Site**  
Tuesday-Saturday 10-5  
Open til 8 p.m. Thursday  
Downtown Champaign — 110 N. Walnut  
356-6110  
On bus route to Market Place

**Unclaimed and New Bargains**  
We Buy • Sell • Trade Loan  
Jewelry - Audio  
Photo - TV  
Musical Instruments

**Traders World**  
57 Main  
Downtown Champaign  
near Amtrak Station  
More than "Just" a Pawn Shop



# Bad Co.:



Bad Company's performance Sunday night, though fair, had a few bright spots. The band performed hits from their latest album *Desolation Angels*.

Photo by Stephanie D'Water

## not much fantasy

by Pete Rosenbery

Bad Company brought in the 1979-80 concert season at the Assembly Hall Sunday night, but for some reason, the fans left somewhat with an empty feeling.

It might have been the fact that they only played for 75 minutes; or maybe the fact they didn't sing as many songs that they are well-known for, such as "Burning Sky." Or the reason might have been they gave just one encore.

Whatever the reason, what could've been a super opening for the Assembly Hall, turned out to be just average, as a small crowd of just 7,000 found out.

Oh, there were great performances on some of the songs, such as "Running With the Pack," the title song off BC's third album and "Evil Wind," where drummer Simon Kirke went into a one-man show with smoke rising from the platform as the crowd got to its feet. Kirke then switched to laser

drum sticks as laser green lights rose from the floor up to the dome of the Assembly Hall. The solo lasted for a good four minutes and at the end, the crowd gave him a well-deserved standing ovation.

From there, the band went into "Rock 'n Roll Fantasy," off the group's latest album, "Desolation Angels." The song was a crowd-pleaser, as inside, each who heard dreamed of his own fantasy stage. At the end of the song, spotlights flashed around the Assembly Hall into the crowd which was finally beginning to loosen up after a weak beginning.

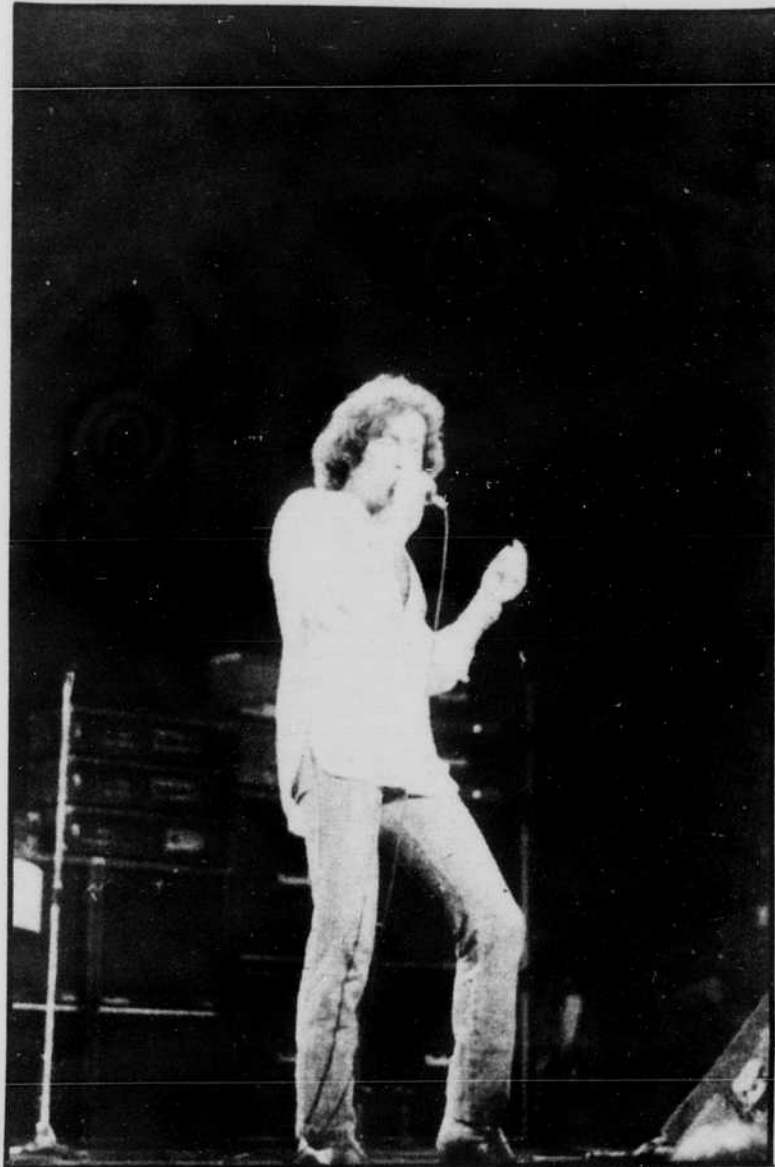
Upon leaving the stage, the crowd stood on its feet for ten minutes of clapping, chanting and wanting to hear some more. Finally, the four members came back onstage, to sing only one song, "Can't Get Enough of Your Love." Then they left just as quickly, and the lights went up, amid many boos from the audience.

One of the highlights of the night was when Kirke came out for the encore with a bottle of champagne and said, "I brought Champagne for Champaign."

The song that really clicked for the group as a whole, though, was "She Brings Me Love," with Paul Rogers on the keyboard. The song showed off each of the talents of Bad Company and brought the group together. It's just too bad that the audience had to wait for the final four or five songs to be really entertained.

The warm-up band, Carillo, is definitely a group that will have to be reckoned with. The band, which records for Atlantic Records, played some songs off its latest album, "Street of Dreams." The one that impressed observers the most was "Under the Gun," from the "S. of D." album.

Upcoming at the Assembly Hall in future weeks will be Styx, 8 p.m., Saturday and Kansas, also at 8 p.m., on Oct. 6.



Paul Rogers leads Bad Company last Sunday night at the Assembly Hall.

Photo by Stephanie D'Water

## No record for PC

Parkland is one student short of the fall semester of 1976 when the College had a record head count of 7,202. The head count for this fall semester is 7,201.

However, the Full Time Equivalent of 4,061 is the highest ever at the College. (Full Time

Equivalent is any student taking 15 credit hours.) The second highest F.T.E. was in the fall of 1975 with a count of 3,981, which was 80 fewer than this semester. The Full Time Equivalent for Fall, 1979, is 168 greater than the F.T.E. for Fall, 1978.

## Sigma Theta Phi: the rush is on

Sigma Theta Phi, the Parkland Fraternity designed to establish a Fraternity of men to increase their skills and capacities in service to their fellow students and community, will hold their first Membership Rush.

The Rush will be held at Hessel

Park on Friday, Sept. 21, at 5:30 p.m. All persons interested may sign-up in room X160 or call Scott Miller at 359-2432. Free food and drink will be served.

Niel Henriksen  
 103 E. Chalmers  
 344-7797

## U.S. productivity down

The Carter administration is ignoring the nation's single most important economic problem, says a University of Illinois economist.

John B. Parrish, professor of economics, believes a decline in the growth of productivity, measured as the output of goods and services per man-hour of labor, must be reversed before other problems can be solved.

"I have heard President Carter mention the word 'productivity' only once," he said.

When the decline in growth of

productivity began in 1966, the United States was near the top among developed nations in annual productivity gains. Now the United States is near the bottom among 12 leading industrial nations, he said.

Costly government regulations and the expense of protecting the environment have slowed growth in productivity, Parrish said.

To stimulate productivity, Parrish said, the U.S. government should make these seven changes in economic policy:

- Allow businesses to deduct depreciation allowances from their taxable income more quickly. This temporarily would reduce the federal tax revenue but would encourage spending on more efficient productive capacity, which would increase the output of wage earners.

- Reduce the maximum capital gains tax from 28 percent to a lower level. The tax was cut from 50 percent to 28 percent in 1978, a change which already has encouraged investment in new businesses.

- Reduce environmental standards for some industries by 5 to 10 percent. This cut would save a great deal of money without endangering anyone's health. Much of the money would be spent to improve productivity.

- Reinstate the oil depletion

allowance, abandoned in 1972, to encourage more drilling for oil and gas.

- Stop penalizing the small saver with low interest rates paid on bank savings accounts. Higher rates would encourage savings which could be used to improve productivity, and the higher rate of saving would reduce inflationary spending.

- Cut the annual rate of growth of the nation's money supply from this year's eight percent to about two percent. The lower rate would be an essential step in slowing inflation.

- Reduce federal spending at least five percent a year for the next five years and at the same time cut taxes each year.

## WPCD: African affairs aired

WPCD will be presenting a program on Africa and African affairs every Tuesday at 3 p.m. hosted by Thomas Goba. The program will deal with the political, educational, social, and cultural developments in Africa and will include interviews and guest speakers.

Comments and contributions will be appreciated.

### NOTICE

Some people are trying to cash their checks at the business office. The check-cashing system is not in effect, yet. Unfortunately, it may not be put into use for quite some time.

### NOTICE

It has come to the attention of Parkland College that the Champaign Park District has complained about PC students who are speeding past the park area to Mattis Ave. It is advised to you to slow down, or you may become the example.

## Pro Kennedy group holds first meeting

A draft Kennedy movement has organized in Urbana-Champaign. Dave Crawford and Dan Vera, co-chairmen of the Citizens for Kennedy, have announced that the group will hold its first organizational meeting at 7:30 p.m. on Thursday, Sept. 20, in room 213 Gregory Hall on the University of Illinois campus. All interested members of the community are urged to attend.



# Inventory Lists

by Tori Wagner

There's been a fire, and half the house has burned to the ground. The insurance agent wants to know what the specific damages are, but the home owner cannot provide details and may have to take a considerable loss.

A new inventory system has been designed especially for homes, so that victims of fire or burglary can have at hand a complete list of everything in the home.

Butch Boruff, of St. Joseph, who previously conducted inventories for grocery and liquor stores quit his job eight months ago to do research on the idea of a home inventory system.

From talking with insurance agents, Boruff found that in many

cases clients are told to take an inventory but aren't told how and until now no real system has been designed for home inventory.

"I also received many phone calls from people inquiring as to whether an inventory system for the home was available," Boruff said.

Boruff has designed a complete packet with all directions and materials needed to compose an inventory.

The packet contains lists of specific items found in all rooms and storage areas. Places commonly missed, which Boruff has included, are closets, bathrooms, and garages.

Next to each item are lines for the serial number, model, date and price of purchase, and where the item was purchased.

In a kitchen, for example, the list contains appliances, utensils, towels, mops, and even food staples such as flour, sugar and salt.

"People would be amazed at how much all kitchen supplies can add up to," Boruff said.

Many times after damage has occurred in the home, the insurance settlement is considerable less than full coverage because an average price is set when there is no proof of purchase or ownership.

The benefit to the owner, Boruff said, would be 90 to 100 percent payment of full coverage and reduced time to receive the settlement.

Wills can also be made easily from an inventory.

Boruff has talked with insurance companies about making the packet available to clients, but so far no insurance company has accepted.

Boruff said that he is willing to market his product personally if no insurance company will accept his offer.

## Parkland Art Program sponsors St. Louis trip

A field trip to the St. Louis Art Museum featuring a private showing of the works of the French painter Henri Matisse, has been set for Sept. 27, 1979.

The Parkland College Community Arts Program is sponsoring the event and invites students and district residents to participate. The cost is \$10 per person.

For reservations, call Sheila Zembruski, at 351-2323 or Clara Lindsey, Communications Division at 351-2313 by Sept. 20.

**Schedule:**  
7:00 a.m.—Leave Parkland College from Circle Drive  
10:30 a.m.—Arrive at museum  
11-11:45 a.m. — Reserved private viewing of Matisse  
Noon-4 p.m. — Your own time to sightsee, shop, sit in the park, or visit the zoo one block away  
4:15-5:45 p.m. — Dinner at restaurant in St. Louis (cost not included in bus tour reservation)  
5:45 p.m.—Leave St. Louis  
9:30 p.m.—Arrive at Parkland College

## PC offers music

A variety of music classes ranging from jazz to bluegrass and old-time music are being offered for Parkland students and non-students.

Some instruments are available for free use. Registration can be made at the first rehearsal or later at the College Office of Admissions and Records with permission of the instructor.

For jazz musicians, there's a large Jazz Band (MUS 146-80) that meets on Mondays at 7:30 p.m. (another group may rehearse on Tuesday evenings), afternoon ensembles, and small combos (MUS 146) which are on Mondays and Wednesdays during 2 p.m.-3 p.m., and two options of jazz piano, one for college credit (MUS 146-02) on Mondays and Wednesdays from 3 p.m.-5 p.m., and one non-credit (NCR 586) section Mondays and Wednesdays from 4 p.m.-5 p.m.

The Community Band (NCR 586) meets weekly at 7 p.m. on Thursdays.

Some other courses offered are: Bluegrass and Oldtime Music (NCR 587), Classical Guitar (MUS-164), Advanced Guitar (NCR 588), College Chorus (MUS 140), Chamber Singers (NCR 586), and piano classes ranging from beginning to two years of instruction.

## Goldrush has new life

by Kevin King

The skyrocketing cost of gold — \$338 an ounce on the London market — seems to have stimulated local appetites for gold jewelry, John Barger, vice-president of M.J. Reed Jewelers in Champaign, says.

"When the gold market price broke \$200 an ounce, trade people were concerned that demand would be hurt, but its been just the opposite," says Barger.

Investment is not the main reason that there is an increase in sales of the jewelry.

"People are buying it for a status

symbol. They know others are aware of how expensive it is." Barber says that jewelry is not the form in which customers buy gold to invest in. For that they go to gold bullion.

Prices in the jewelry store are affected from month to month by the varying world market price of gold. After new shipments of jewelry are received by the store each month, the sales price is raised or lowered accordingly.

"Gold's price on the world market doesn't make up the bulk of the store price," says Barger. "Human labor and the actual

design of the jewelry make up most of what the customer pays."

In stores and shops, gold comes in various colors, such as green and rose, but Barger says that in the recently arrived Christmas stock, yellow gold, with a fine finish, is the main item and the most popular among customers.

Asked if the high cost of gold were of concern to jewelers, Barger said, "When gold once bought for \$175 is now \$350 that is cause for a little concern."

He added, "The main concern, though, is getting enough of the stuff to meet the demand."

## 'Forum' talks stugo and drinking age

As described by Webster's New Collegiate Dictionary, a "forum" is a public meeting involving audience discussion of a problem. That description fits last Thursday's first meeting of the Forensic Union's "Forum."

After a preliminary discussion of individuals' interests and goals concerning the group, the talk turned to Student Government, the upcoming elections, and the same old question of what is actually gained through this government.

Long-time issues such as a check-cashing policy and a day-care center for Parkland mothers were brought up as examples of the student's inability to obtain action and power, especially through the recent Student Governments.

Stugo did not go undefended, however, as some students pointed out that with the apathy exhibited by students in general, Student Government could not hope to

achieve any position of power. Part of the apathy was attributed to the lack of causes or commitments today, as compared to anti-war and civil rights demonstrations of the late 60's.

The meeting was concluded with "soap-box" oratory on the reinstated drinking law, followed by supporting and opposing views from the audience.

Forum's next meeting is at noon, Sept. 27, in room 150. The topic of that meeting is Rhodesia and the U.S. involvement. Anyone with an opinion is welcome to attend and express it.

Programs sponsored by the Forensic Union to look forward to will be guest speakers on topics of interest, excursions to local public meetings, inhouse adversaries (administrators or instructors of Parkland), and a "meeting of the minds" in which role playing is used by the students, expressing the speaker they choose.

Reliable dual-purpose

**MINI**



YAMAHA GT80

Completely street legal with full instrumentation and lighting. This tough, little mini is built to take it. Wherever you take it.

**\$549<sup>00</sup>**

**Sportland**

1602 N. Lincoln  
Lincoln at Bradley  
Urbana  
328-5005

**YAMAHA**

When you know how they're built

**25¢ off**



Sept. 25th only reg. 65c

**Medium Hot Carmel Sundae**



Stores at  
1209 N. Prospect  
3rd and Green  
1903 Philo Rd.  
Clip and present for special



**Innsbruck Lodge**

- Nearest Motor Inn to Parkland College, perfect for your out-of-town guests.
- Restaurant serving Breakfast, Lunch, and Dinner daily.
- Happy Hour in the Hunt Room. Mon.-Fri. 4:30-6:30 p.m.
- Banquet Rooms available for all occasions serving groups from 20-250.
- Champagne Brunch served every Sunday from 11:30 a.m.-3:00 p.m.

MAKE RESERVATIONS NOW FOR ALL SPECIAL PARKLAND COLLEGE EVENTS

Phone 398-3800  
Corner Bradley and Mattis

**Stewart Auto Parts**

Full Service Automotive  
Machine Shop

44 E. Washington  
Champaign

**356-1307**

8 a.m. - 9 p.m.

Complete line of quality  
replacement parts!



**Schedule Change**

Gray Line to Parkland College will change schedule effective Sunday, September 16th. For route and schedule information Call 384-8188



Steve Elam



Photos by Tom Schmitz and Mark Sterkel

# All-Comers pulls surprises

by Chris Slack

The All-Comers meet last Saturday created much excitement and a few surprises. Southern Illinois University was victorious over Illinois by a score of 23-32 while Parkland's harriers made a fine showing also.

As expected, Craig Virgin emerged as the winner but did something out of the ordinary as he stopped and walked midway in the race. He did this because he was trying to bring the Illinois runners up more towards the front in order to overtake the Salukis. In this attempt he fell from second to twelfth place and then

started making his move gain and ended up edging out Jim Flannery with a time of 24:05.3 while Flannery, who was the dual meet winner, posted an impressive time of 24:09.5.

Karsten Schulz who led at the two mile mark faded to third as he and three other Salukis placed in the top seven.

Other top finishers included Chris Riegger, Tom Fitzpatrick and Ugandan half-miler Mike Bisase, all of Southern Illinois.

For the Illini, Jon Schmidt came in sixth, John Olszewski a strong seventh and Rob Carney placed eighth.

It was cool, but quite comfortable for the

participants to run, and people of all ages showed up to try their skills at running. They also came from as far as Chicago and the surrounding areas.

Parkland got strong support from Steve Elam, who was the Cobras top finisher with a time of 25:40. David Patrick also displayed fine form as he was second to Elam.

The Cobras cross country coach, Lee LaBadie, an Illini alumni, also participated in the race. Parkland entered six runners in the race: Elam, Bob Nuckols, Cliff Ponder, Bill Wilson, Mark Patrick and David Patrick.

Other teams in the race included the Illini alumni with such names as Mike

Durkin, Rick Wilson, LaBadie and, of course, Virgin.

Also involved were the Illinois men's basketball team, and the Eastern Illinois junior varsity team.

There was also a women's quadrangular meet and Illinois squeezed past Indiana State 43-44. The other two teams were the Eastern Illinois women who posted 55 points and Southeast Missouri State posting 91 points.

Parkland begins its regular season Saturday in the Chiefs Invitational in Waubensee. From what was seen, the Cobras could match up very well with their opponents.



# CLASSIFIEDS

DUE  
FRIDAY NOON

FREE

## ATTENTION

PROSPECTUS STAFF should enter the office — Important message on chalk-board.

9/19

FOLK MUSIC — To play or sing or listen come to TRITO'S, 1104 W. University Ave., Urbana. 8:30 p.m. each Friday. Newcomers are welcome.

10/3

## AUTO

1977 DODGE ASPEN SPECIAL EDITION WAGON. Air conditioning, automatic transmission, power steering, disc brakes, cruise control, rear window defogger, reclining bucket seats, luggage rack, radial tires, mags. Good condition. Priced way below Blue Book — \$3500. Call 485-5137 after 2 p.m.

26

## CYCLES

1967 BSA 250, very clean, needs work, with complete parts bike—\$195; single rail motorcycle trailer—\$95; 1949 Indian Scout, 440cc vertical twin—\$595; 1959 Triumph 650cc hillclimber, runs good—\$425; homemade minibike, nice—\$75; Honda MR50 parts for sale. WANTED: Honda MR 50 or other minibike. Will trade for dirt bike or road bike. Call 1-586-2406.

9/19/79

1975 YAMAHA 125cc Factory Moto Crosser, recently overhauled with CDI ignition. Very fast and still looks good — \$350 or trade for mini cycle, road bike or less radical dirt bike. Call 1-586-2406 toll free from C-U.

10/10

## FOR RENT

Special efficiency apartment. It's furnished and has a private bath, kitchen facilities, carpeted, fireplace, off-street parking, heat and water paid. Laundry facility \$165 a month. For more information call 359-6247.

tfn

## FOR SALE

2 Voice of the Theatre speaker cabinets with 3-way 12" speakers. Excellent sound \$375. After 5 p.m. 356-8330.

tfn

Western saddle wth 15" seat. Used twice. Cost \$319.00 new — make me an offer. Anne — 1-598-2408 or 367-7980.

tfn

SNAPPER Lawn Mower, 7 HP, 32 inch cut, runs good—\$295. 1948 INDIAN Papoose scooter, extremely rare and restorable—\$395. Will trade for good minicycle, dirt bike, road bike or 3-wheeler. Portable submersible sump pump—\$30. Call 1-586-2406.

9/26/79

TAPE RECORDER 7 1/2 in reel to reel Wollensak, dual head, two speed. Excellent condition, like new. Good sound quality. Bag of tapes included \$85.00. Phone 892-2026 after 5 p.m., Rantoul, IL.

9/26/79

## GOING MY WAY

Students wanting to arrange rides to and from Parkland or transportation for out-of-town trips may use this space to do so.

Ride to Parkland and back from Tuscola on Mon., Wed., Fri., for 8-5 job. Call 253-3737 after 6 p.m.

tfn

## HELP WANTED

Babysitter needed in my home, or close to 700 block of West Church, Champaign, while mother attends classes. Call 352-5280 after 4 p.m.

9/26

## CONSUMER ACTIVIST

State-wide citizen lobby now seeking hard-working interested people to build fund-raising staff. Help work for substantial legislative reforms in utilities, property taxes, and housing.

EARN A LIVING WHILE WORKING FOR ECONOMIC & SOCIAL PROGRESS

1-10:30 p.m. \$150/weekly Full or Part-time

Call 9-12 356-1604 for interview

## HELP WANTED

Pizza Hut has positions open for waiters/waitresses and cooks. Hours are flexible to fit a student's scheduled. Good starting pay and uniforms are furnished. Meals are free during working hours. Contact Joe Steele at Pizza Hut, 209 N. Mattis. No phone calls please.

## LOST AND FOUND

I've lost my mind! If you see it, please return. Call 344-4016. You can't miss my brain — it's twirling around like a top and swimming in alcohol.

9/19

Casio Pocket Calculator/Watch. Little cash value, great sentimental value. Cash reward. Phone no. in battery case or see into desk. Thanks.

tfn

Found — a mind. Found twirling under a voting booth. Tootoo on. Looked sort of like a top swimming in alcohol. For info call

9/19

## MISCELLANEOUS

Cute, fluffy kittens free to good home. Call 892-8248 evenings only.

9/26

SKYDIVE . . . Learn the art of precision freefall. First jump course \$90. Contact Timothy Kelly or call 384-PARA. Sponsored by Illini Sport Parachute Club.

tfn

## PERSONALS

Personal — Cynthia — You're great — guess who — P.S. I'll get you to go to an Illini football game yet.

9/19

## PERSONALS

Tom — Buck is a jerk . . . One of your little buddies.

9/19

Personal — Sasquatch — Remember the good old days at SJ-O when old Bobby Joe wouldn't even let us go into McDonald's for lunch. Well we're graduated now and can go to the T-Bird all the time. But remember those 1 o'clocks.

9/19

Thank you to Boo, Paul, Pete, Mary Ellen, Scott, Slick, Betty, Mike, William, Scott, Ross, Paul, Mike, Rodney, Tim, Brian, Michael, and James — your interested in Stugo's Convocations Board is MUCH APPRECIATED! Our first meeting will be Tuesday, Sept. 25 at 11:00 outside at the pond area while enjoying the sounds of "Mosaic." Please complete a schedule card in the Stugo office, X159, and leave in my mailbox by Friday, Sept. 21. Thanks! Actively — Cynthia.

9/19

For the 1979 Cobra Women's Volleyball Squad — Just a note to wish you luck on the 1979 year and the home-opener with Lincoln and Joliet.

The Prospectus Sports Staff (all two of us)

9/19

I would like to sincerely publicly thank all of the five people who voted for me in the recent election. Remember the old Cub saying — Wait till next year. Also, those five people (and they know who they are, plus a new campaign manager, may come to the T-Bird next Saturday night for a beer (not beers) on me. Pete.

9/19

## ROOMATES NEEDED

1 female roommate, understanding, non-prejudicial (Christian). Call 351-5041, usually home at 4:00 (after Sept. 17). Keep trying.

tfn

Female roommate wanted to share 3 bedroom house with 2 others. Located between campus and Parkland. 359-3872.

tfn

Roommate wanted to share apt. Apt. not secured yet. Call Marty after 5 p.m. (309) 962-9172.

tfn



## Schedule Change

Gray Line to Parkland College will change schedule effective Sunday, September 16th. For route and schedule information Call 384-8188.



## NAUTILUS OF CHAMPAIGN FITNESS CENTER IS GROWING

Now there are TWO NAUTILUS OF CHAMPAIGNS

Westchester Plaza  
of 1710 W. BRADLEY  
1/4 mi. East of Parkland College!  
359-4353

University of Illinois Campus  
BROMLEY HALL  
910 S. 3rd St.  
Champaign — 384-0704

Join NAUTILUS of Champaign and you will get:

- Complete Toning and Conditioning Programs
- Rehabilitation Programs
- Individual Programs Designed For Specific Needs
- In and Out of Season Conditioning For All Athletes

YOU WILL FEEL THE DIFFERENCE

### IMPROVE YOUR

- Endurance • Flexibility • Strength

In Celebration of Our New Nautilus we offer

SCHOOL YEAR FOR  
**\$105** reg. \$125

1 SEMESTER

**\$65** reg. \$75

OFFER EXPIRES SEPT. 9



## HELP WANTED

### Full or Part-Time Sales Person

for Men's Wear Store

EXPERIENCE HELPFUL, BUT NOT NECESSARY

— Please inquire in the office of —

# Jos. Kuhn & Co.

Downtown Champaign

EQUAL OPPORTUNITY EMPLOYER

# Otrabanda comes to PC

The Otrabanda Theatre Company, sponsored by Parkland College and MillerCom 80, will perform a new play "Swamp Samba," in the Parkland College Center at noon tomorrow.

Admission is free.

"Swamp Samba," an adaptation of Moliere's play, "Le Bourgeois Gentilhomme," combines comedy with live music and dance.

Otrabanda is the group from

New Orleans that travels by raft down the Mississippi River each summer and performs in communities near the river.

Now in its seventh year, the Mississippi River tour takes the actors down 1,100 miles of the "big muddy," from St. Louis to New Orleans, and stops in six states over a period of five weeks.

Their theater is usually a large tent, which creates the proper en-

vironment for the group's free-wheeling productions.

## Last Chance to Sign Up for Student Health Insurance

On Tuesday, Sept. 25, from 11 a.m. to 1 p.m. in room X117 Mr. Ken Huckstep, a representative from Heritage Insurance Company will be on campus to explain the Student Health Insurance plan and answer your questions about coverage.

If you have not signed up for insurance, you are not covered. Subscriptions will be accepted through next week. Come to the Health Service X202 (next to the T.V. lounge) to enroll. Cost for the entire year is only \$35 per student.

• Sandwiches • Fish & Shrimp

• Steaks • Munchies

# GRUNT

621 E. Green, Champaign

OPEN **BOWLING** LEAGUE

SNACK BAR COCKTAIL LOUNGE

24 BRUNSWICK GOLD CROWN LANES WITH A-2 BALL RETURN

COMPLETELY EQUIPPED PRO SHOP

**ARROWHEAD LANES INC**

**352-5288**

PLENTY OF PARKING CHAMPAIGN

1401 N. MCKINLEY



# Seven fare well in Freddy

Last week's Fast Freddy's game was very close, as six people finished in the top two positions. But Bruce Schumacher of 1009 W. Harvard St., Champaign, came out on top, just missing the Wake Forest upset of the Georgia Bulldogs.

The six who just missed but were Scott Alender, Bob Durst, Mike Roelfs, Kirk Donovan, Kathy Fisher, and Tom Coleman. Seventy-three entries in all were received, by far the biggest turnout of the year. One word of warning—a few of the entries this week had no winner circled, and I'll have to count it wrong. So remember to circle your choice.

As for my record, I feel myself getting ready towards the big .650 percentage with a 9-4 overall mark. For the season, I stand 20-14, good for a .588 standing. Football, you bet!!!!!!

Scores of last week's contests were UCLA 31, Purdue 21; Michigan State 41, Oregon 17; Notre Dame 12, Michigan 10; Ohio State 21, Minnesota 17; Penn State 45, Rutgers 10; Oklahoma 21, Iowa 6; Wisconsin 38, Air Force 0; Maryland 19, Clemson 0; Pittsburgh 24, Kansas 0; Baylor 17, Texas A&M 7; Navy 26, Citadel 7; Wake Forest 22, Georgia 21, and

Missouri 14, Illinois 6.

Most of the entrants had trouble with three games, two of which could have gone either way, and the other one a total surprise. Notre Dame's defensive-laden win over Michigan proved that you don't need to play at home to get all the breaks. UCLA proved that if you do play at home, the breaks can come your way easier, and nobody is quite sure how Wake Forest pulled off its win over Georgia.

This week, like last, a few so-called laughter games have been inserted, but then one has to try to explain how Iowa managed to lose to a supposedly powerful Oklahoma squad by just a 21-6 margin. This week, though, the Hawkeyes face the other terror of the Big Eight, (Big Two, Little Six) when they play Nebraska. Don't you think the Cornhuskers will stand to lose? Nebraska 31, Iowa 7.

Another surprise was the Illini's play against Missouri. Mistakes cost Illinois the game, and for the first time this year, I have to pick the Illini to win 24-21 over the Air Force Academy. But, before there is any celebrating, remember that the game will be out at the base of the Rocky Mountains, and both

teams are winless so anything can happen.

Now you might think that my recent success at predicting might lead to a little insanity by my next outlook. But I'm serious when I say: Northwestern 30, Syracuse 24. The Wildcat's felt the thrill of victory for the first time in two years last weekend when they beat Wyoming 27-22. After so many seasons of the agony of defeat, can they win two in a row? You betcha. Penn State should keep rolling right along with an easy 24-10 triumph over Texas A&M. The Aggies have come off two tough losses and are 0-2, but don't think for a moment Joe Paterno's Nittany Lions won't look past the Bears.

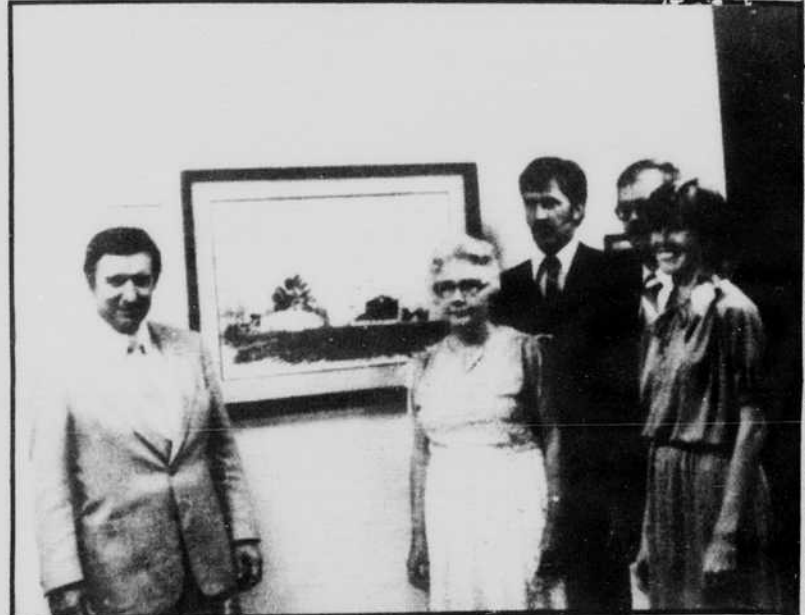
Top-ranked USC will be at home, to face the Minnesota Badgers. No upset here, the Trojans by 16.

The Crimson Tide might have a tough time with unbeaten and surprising Baylor, but should overcome, 28-21.

Major reason? The Crimson Tide wants that number one ranking in case USC should fall. Another reason for the Tide's triumph is they had two weeks to prepare for the Bears. Besides, Bear Bryant needs a win to keep in step with the all-time coaching victories record of Amos Alonzo Stagg.

Another big match-up this week pits Notre Dame at Purdue. The Boilermakers were upset at the Coliseum last Saturday and need a win against a national power to regain predicted pre-season national status. Notre Dame narrowly avoided defeat on a missed field goal at Michigan. While both teams have offensive powerhouses, the defense will tell the story. Notre Dame's just a little better. The Irish by a touchdown, 21-14.

In other Freddy games, look for Georgia to rebound after an upset to beat Clemson 23-12; Indiana to upset Kentucky 17-14; UCLA to dump Wisconsin 35-17; Oklahoma to power over Tulsa by 17, 32-15; Stanford by 10 over Army, 30-20, and Texas to handle Iowa State 34-14.



William Staerkel accepts the Galty Farm watercolor donated in honor of John P. Gallahue. Mrs. Gallahue with the artist—John W. Pratt, and her children—John and Rita, made the presentation. Photo by Cheryl Mallicoat

## Crowd at presentation

by Randy R. Strebing

A crowd of over 100 people gathered in the Agriculture/Business Dept. hall last week as Parkland College President William Staerkel accepted the "Galty Farm" watercolor donated by Parkland College Administration, Instructors, and staff members in honor of John P. Gallahue.

Present were Mrs. Gallahue and

her children, and the painter of the water color, John W. Pratt.

Mr. Gallahue was engaged in farming all his life on the farm that had been in the Gallahue family for over 100 years. Mr. Gallahue was a member of the Parkland College Foundation.

His daughter Rita, is employed at Parkland in Secretarial Science.

When Mr. Gallahue passed away February 4, 1979, the staff and instructors at Parkland wanted to make a contribution other than

sending flowers to the funeral. A donation was made from the staff, administration, and instructors to the Gallahue family to be used as they seen fit.

Pratt was asked to paint a watercolor of the farm the Mr. Gallahue worked on all his life. It was decided by the family to donate the painting in Mr. Gallahue's name to Parkland College.

A reception followed the watercolor presentation.

### Fast Freddy Contest

1. Everyone, off campus or on, except newspaper staff members, their families and Fast Freddy, is eligible.
2. This official entry blank must be used.
3. Only one entry per person will be accepted. Entries sent through the campus mail system will NOT be accepted. Entries must be brought to PROSPECTUS office (X155) in person or by U.S. Mail.
4. No individual can win the contest prize more than twice during the season.
5. All entry blanks are due in the PROSPECTUS office by 12 noon on the Friday before the games. No entries will be accepted after this time under any circumstances.
6. The winner will be announced in the following Wednesday's PROSPECTUS and will receive a cash prize of \$5.00.
7. Circle the team you think will win in each game. Circle both teams for a tie. The tie-breaker games will be used only in case of ties and will not count in the total of twelve games to be predicted. Pick a score for the tie-breaker game.

Winner is Person who selects the most game-winners correctly.

Game 1	Texas A&M at Penn State
Game 2	Baylor at Alabama
Game 3	Illinois at Air Force
Game 4	Syracuse at Northwestern
Game 5	Minnesota at USC
Game 6	Notre Dame at Purdue
Game 7	UCLA at Wisconsin
Game 8	Army at Stanford
Game 9	Tulsa at Oklahoma
Game 10	Georgia at Clemson
Game 11	Iowa State at Texas
Game 12	Kentucky at Indiana

#### TIE-BREAKER

Nebraska ( ) at Iowa ( )

Name \_\_\_\_\_  
Phone \_\_\_\_\_  
Address \_\_\_\_\_

### Free Classified — in Prospectus

DR. ALEX SORKIN  
and Associates  
Optometrists

contact lenses  
eyes examined  
hours by appointment

605 S. Wright, Champaign 356-5787

**Reasonable Rent**

includes your heat, hot and cold water and trash removal. Spacious 1 and 2 bedroom apartments on the bus line to campus. Children and pets welcome. Semester leases now available. Bring this ad with you. If you qualify, it will be your damage deposit.

Country Fair Apts.  
2106 W. White St., C.  
behind  
Country Fair Shopping Center

**\$2 "FREE GAS" MONEY**

**"STYLE IT"**

AT...JOHNNY'S

Men's Ladies

☆ Layer Cuts ☆ Shag Cuts ☆ Vertical Cut ☆  
1720 W. Bradley, C. 352-2009

\$2 rebate toward any \$12 style cut w/coupon  
or \$1 off on regular cuts

Expiration date Oct. 3

**SEKAI**

... Ask the person who owns One!

Don't buy a new bicycle 'til you've checked out Sekai — the bikes with unmatched components, value, and reputation.

**CHAMPAIGN CYCLE CO.**

506 S. Belmont 352-7600

403 E. Green 328-1221



## U.S. table tennis getting popular

by Pete Rosenbery

With the acceptance of table tennis into the Olympics, America and other nations will take a greater interest in a sport which has been ruled by the Far East, according to D.J. Lee, international table tennis champion.

Lee was at Parkland last Tuesday afternoon for an exhibition and clinic in the gameroom along with his wife, Heja, who was the 1978 women's champ and is currently ranked No. 2.

"It's one of the fastest growing sports and since it will be recognized in the Olympics in 1980, it will be more popular," he said after his exhibition.

Lee, who held the national title from 1968-73, says he feels that Americans don't realize the concentration and the footwork involved in table tennis.

"Ping-pong and table tennis are entirely different," he said. "In ping-pong, you play with no rules, while in table tennis, you follow a certain set of rules."

Lee, who has been playing for 20 years, said he got his interest in table tennis from his brothers. He has been giving exhibitions for the last 10 years, and the visit to Parkland is his fourth.

"I used to travel with the Harlem Globetrotters, performing at halftime," he continued. "I remember one time in Athens, Greece, I performed in front of 15,000 people in the first Olympic Stadium."

Lee says that even though he is traveling, he is only away from his Columbus, Ohio, home for about four months. He has been in seven or eight countries.

"It's a great feeling when I give exhibitions," he said. "I don't mind doing it."

He is still active in tournaments and says that age is not much of a factor in table tennis.

"I'll play till I can't, and eventually I hope to be a national coach," he continued.

He says that few people realize how physical a sport table tennis really is. "You play both in at the table and away from the table." You have to be able to move freely and you need to have good footwork, said Lee, who says he curls weights and does knee exercises.

When asked how the U.S. chances are in the Olympics, Lee smiled and said, "Right now, the team is 15th out of 115 nations competing internationally, so they're not that bad."



### Why is this man smiling?

One reason might be the girls that surround him, but the main reason is the upcoming season. Coach Randy Pregler will be sending the Cobra Women's squad in action for the first time tomorrow night against both Joliet and Lincoln. Surrounding the first year coach are: front row left to right—Janet Black, Jeannise Percival, Peggy Kraft, Deanne McCollough, and Laurie Jones. Back row—Nicollete Jablonski, Lori Anda, Janie Killingsworth, Linda Stephans, Patti Tria, and Lori DeVore. Game time is 5:30 p.m.

Photo by Cheryl Mallicoat

## Spikers hopes are high

by Pete Rosenbery

The 1979 Parkland Women's volleyball season will open Thursday night with a new coach, some new faces, and a hope for the coming year.

The Cobras first two opponents will be Joliet and Lincoln in the three-team matchup, each playing the other two. Game time is 5:30 p.m. in the gym.

"Cautious optimism is the word in the Cobra corner, as new coach Randy Pregler hasn't seen any of his opponents before and will get his first look at them when they come on the floor for the first time.

"I'll get some idea from some of the players who played against them last season," he noted however. "And I hope we have a good crowd to come and watch us play."

Parkland returns five members from last year's squad. Included are Lori DeVore, Laurie Jones, Janie Killingsworth, Jeannise Percival and Linda Stephans. Notably missing from the group is Lorry Voyles, who dropped from the team last week. Also dropping from the squad was Becky Murphy, a freshman from Mahomet-Seymour.

Pregler has been impressed with the improvement made so far in the early going.

"Peggy Kraft looks pretty good. Jeannise is improving quite a bit," he said. "I'm trying to get them to play more aggressive," he continued. "Lori Anda is starting to come around as is everybody."

Pregler plans on using 6-3 offense this year, with six spikers and three setters. The offense is one for quick movement, so the action will be there.

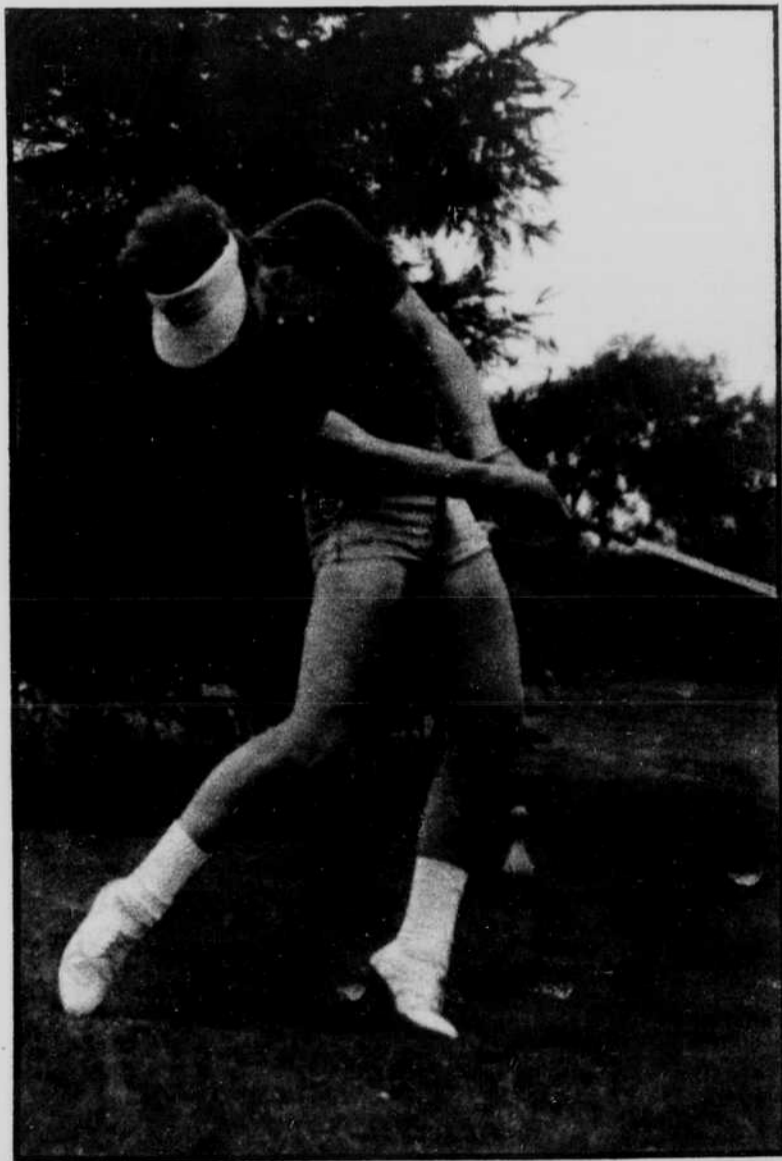
Other team members for the year include Janet Black, Deanne McCollough, Patti Tria, and Nicollete Jablonski.

### PARKLAND WOMEN'S VOLLEYBALL ROSTER

NAME	SCHOOL	YEAR
Deanne McCollough	Champaign Centennial	Fr.
Patti Tria	Heyworth	Fr.
Janie Killingsworth	Paxton	So.
Laurie Jones	Champaign Centennial	So.
Peggy Kraft	Unity (Tolono)	Fr.
Nicollete Jablonski	Lourades High, Chicago	Fr.
Jeannise Percival	Urbana	So.
Lori DeVore	Heyworth	So.
Lori Anda	Paxton	Fr.
Janet Black	Unity (Tolono)	Fr.
Linda Stephans	Rantoul	So.
Coach—Randy Pregler		

### Notice to all Women Basketball Players:

There will be a clinic Thursday, September 20th at 2 p.m. in the gymnasium.



Mike McCoy drives toward the green at the Parkland Invitational last Thursday at Savoy. The Cobras finished tenth in the 17-team meet with a 328 total. Lake County ran away from the field, carding a 298 score, followed by Shawnee College with a 309 total. Photo by Chris Kemp

## Elam strides toward victory

There could be a Cobra All-American this fall.

Steve Elam, a cross country runner, ran in the All-Comers meet last week in Savoy. His time of 25:42 was a personal best. His 30th place was lower than last year's, but that would be because of the presence of the Southern Illinois team this year.

"My goal is to be an All-American," he said.

The national meet will be in Wichita, Kan., this year. The top 25 finishers in that meet earn All-American honors. Only one runner from the Illinois junior colleges earned that distinction last year — Jim Scruton of Lincoln Land.

Elam attributes his good start to an extensive summer of training. His tough training routine is continued this fall as he runs twice a day — about five miles in the morning and 6-12 miles in the evening.

An engineering student, Elam has to set time aside for his studies also.

"If I make bad grades, I'm not going to put the blame on running," said Elam. "If I wasn't running, I'd probably have a part-time job. So I would be spending just as much time studying."

Saturday, Elam and the squad travel to Waubensee for the Chiefs

Invitational. Elam is setting his sights for the big stuff.

"I think I can get in the top two or three," he said. "Maybe win it."

The only regret he has so far is the sparseness of the team. He wishes it was bigger so there could be more team effort put into the practices and the meets.

But for the time being, Elam is looking towards the season in anticipation and knowledge.

"I know I'll have days where I'll run a worse time," he said. "Whether it's a rough course or a bad day, it's going to happen."

But perhaps in Kansas, another PC All-American will emerge.

**PARKLAND PROSPECTUS**  
2400 West Bradley Champaign, IL 61820

Nonprofit Org.  
U.S. Postage  
PAID  
Champaign, Ill.  
Permit No. 268