

Illinois State University

ISU ReD: Research and eData

School of Music Programs

Music

9-23-1975

**Arcadian Consort: Max Schoenfeld, Flute; Tim Hurtz, Oboe;
Russell Bedford, Bassoon; Bedford Watkins, Harpsichord;
September 23, 1975**

Max Schoenfeld Flute

Tim Hurtz Oboe

Russell Bedford Bassoon

Bedford Watkins Harpsichord

Follow this and additional works at: <https://ir.library.illinoisstate.edu/somp>

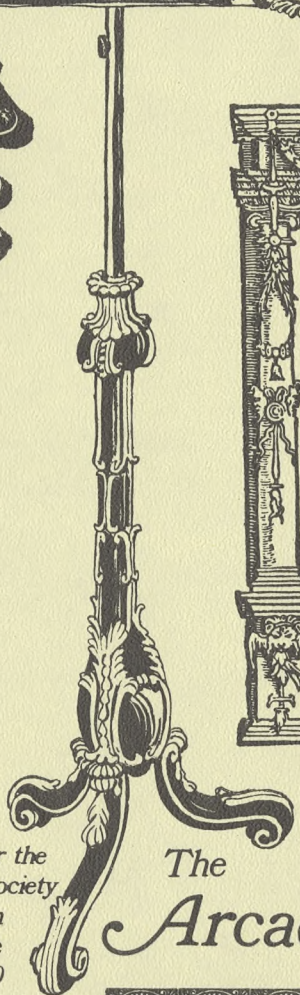
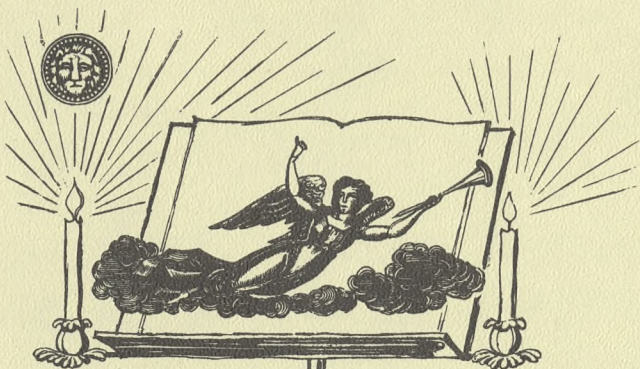


Part of the [Music Performance Commons](#)

Recommended Citation

Schoenfeld, Max Flute; Hurtz, Tim Oboe; Bedford, Russell Bassoon; and Watkins, Bedford Harpsichord, "Arcadian Consort: Max Schoenfeld, Flute; Tim Hurtz, Oboe; Russell Bedford, Bassoon; Bedford Watkins, Harpsichord; September 23, 1975" (1975). *School of Music Programs*. 5572. <https://ir.library.illinoisstate.edu/somp/5572>

This Performance Program is brought to you for free and open access by the Music at ISU ReD: Research and eData. It has been accepted for inclusion in School of Music Programs by an authorized administrator of ISU ReD: Research and eData. For more information, please contact ISUReD@ilstu.edu.



Max Schoenfeld
Flute

Tim Hurtz
Oboe

Russell Bedford
Bassoon

Bedford Watkins
Harpisichord

Named after the
Arcadian Society
founded in
Rome
in 1690

The
Arcadian Consort



ARCADIAN CONSORT

Assisted by

KATHRYN GRAY, Violin

Suite VI in D Minor

Georg Philipp Telemann

Andante
Vivace
Allegro
Andante
Presto
Moderato
Vivace

Sonata in B-Flat Major

Johann Friedrich Fasch

Largo
Allegro
Grave
Allegro

with
KATHRYN GRAY, Violin

INTERMISSION

Bagatelles and Cadenzas (1975)

R. Bedford Watkins

Scaramouche
Pierrot
Trascorsa
Columbine
Harlequin

Trio Sonata in G Major, BWV 1039

Johann Sebastian Bach

Adagio
Allegro ma non presto
Adagio e piano
Presto

Centennial East Recital Hall
Tuesday Evening
September 23, 1975
8:15 p.m.