



# Jornal de Pediatria

www.jpmed.com.br



## REVIEW ARTICLE

# Performance of fecal S100A12 as a novel non-invasive diagnostic biomarker for pediatric inflammatory bowel disease: a systematic review and meta-analysis

Bendix Samarta Witarto <sup>a</sup>, Visuddho Visuddho <sup>a</sup>, Andro Pramana Witarto <sup>a</sup>, Mahendra Tri Arif Sampurna <sup>b,c,\*</sup>, Abyan Irzalady <sup>d</sup>

<sup>a</sup> Universitas Airlangga, Faculty of Medicine, Medical Program, Surabaya, Indonesia

<sup>b</sup> Universitas Airlangga, Airlangga Teaching Hospital, Faculty of Medicine, Department of Pediatrics, Surabaya, Indonesia

<sup>c</sup> Universitas Airlangga, Dr. Soetomo General Hospital, Faculty of Medicine, Department of Pediatrics, Surabaya, Indonesia

<sup>d</sup> University Medical Center Rotterdam, Department of Public Health, Erasmus MC, Rotterdam, the Netherlands

Received 3 October 2022; accepted 20 March 2023

Available online xxx

### KEYWORDS

Diagnosis;  
Feces;  
Inflammatory bowel diseases;  
Pediatrics;  
S100A12;  
Sensitivity and specificity

### Abstract

**Objective:** The incidence and prevalence of inflammatory bowel disease (IBD) in pediatric patients are increasing. Currently, the diagnostic method for IBD is inconvenient, expensive, and difficult. S100A12, a type of calcium-binding protein, detected in the feces of patients with IBD has recently been suggested as a promising diagnostic tool. Hence, the authors aimed to evaluate the accuracy of fecal S100A12 in diagnosing IBD in pediatric patients by performing a meta-analysis.

**Methods:** The authors performed a systematic literature search in five electronic databases for eligible studies up to July 15, 2021. Pooled diagnostic accuracies of fecal S100A12 were analyzed as the primary outcomes. Secondary outcomes were standardized mean difference (SMD) of fecal S100A12 levels between IBD and non-IBD groups and a comparison of diagnostic accuracies between fecal S100A12 and fecal calprotectin.

**Results:** Seven studies comprising 712 children and adolescents (474 non-IBD controls and 238 IBD cases) were included. Fecal S100A12 levels were higher in the IBD group than in the non-IBD group (SMD = 1.88; 95% confidence interval [CI] = 1.19–2.58;  $p < 0.0001$ ). Fecal S100A12 could diagnose IBD in pediatric patients with a pooled sensitivity of 95% (95% CI = 88%–98%), specificity of 97% (95% CI = 95%–98%), and area under the receiver operating summary characteristics (AUS-ROC) curve of 0.99 (95% CI = 0.97–0.99). Fecal S100A12 specificity and AUSROC curve values were higher than those of fecal calprotectin ( $p < 0.05$ ).

**Conclusion:** Fecal S100A12 may serve as an accurate and non-invasive tool for diagnosing pediatric IBD. © 2023 Sociedade Brasileira de Pediatria. Published by Elsevier Editora Ltda. This is an open access article under the CC BY-NC-ND license (<http://creativecommons.org/licenses/by-nc-nd/4.0/>).

\* Corresponding author.

E-mail: [mahendra.tri@fk.unair.ac.id](mailto:mahendra.tri@fk.unair.ac.id) (M.T. Sampurna).

<https://doi.org/10.1016/j.jpmed.2023.03.002>

0021-7557/© 2023 Sociedade Brasileira de Pediatria. Published by Elsevier Editora Ltda. This is an open access article under the CC BY-NC-ND license (<http://creativecommons.org/licenses/by-nc-nd/4.0/>).

Please cite this article in press as: B.S. Witarto, V. Visuddho, A.P. Witarto et al., Performance of fecal S100A12 as a novel non-invasive diagnostic biomarker for pediatric inflammatory bowel disease: a systematic review and meta-analysis, *Jornal de Pediatria* (2023), <https://doi.org/10.1016/j.jpmed.2023.03.002>

## Introduction

Inflammatory bowel disease (IBD) is a group of chronic disorders of the digestive tract, including Crohn's disease (CD) and ulcerative colitis (UC), which have recently become more common among children and adolescents. In recent years, there has been an increase in the incidence and prevalence of IBD in both industrialized and developing countries.<sup>1</sup> The prevalence of pediatric IBD in the United States has increased by 133% over 9 years.<sup>2</sup> In Asian countries, the annual incidence is 11.4/100,000 person-years. This was supported by an analysis of trends over time, which showed an increased incidence of pediatric IBD.<sup>3</sup>

Childhood is a period of crucial physical and emotional development. IBD in children is often associated with a more aggressive disease course, including a greater tendency of engendering extensive disease and requiring early immunomodulation therapy.<sup>4,5</sup> IBD in children is also associated with anemia,<sup>6,7</sup> developmental disorders,<sup>8,9</sup> performance drop,<sup>9</sup> or depression.<sup>10</sup> The relationship between genetics and diet in this disease has been widely studied.<sup>11-15</sup> It is important to screen children for symptoms and risks to prevent disease worsening and complications.

Endoscopic evaluation with biopsy remains the standard criterion for IBD diagnosis. Histopathological findings are essential to determine disease severity and differentiate between UC and CD.<sup>16</sup> However, endoscopic procedures are invasive, uncomfortable, and expensive. Moreover, endoscopy is tricky, especially in pediatric patients, because children need to be hospitalized and often have problems with bowel preparation.<sup>17</sup> Therefore, developing non-invasive diagnostic tools for the early detection of IBD in pediatric patients is essential. Fecal markers, a group of substances released by inflamed mucosa, are potential diagnostic tools for IBD.<sup>18,19</sup> Calprotectin is one of the widely used fecal markers.<sup>20,21</sup> Unfortunately, a previous meta-analysis found that fecal calprotectin has a lower specificity in diagnosing pediatric IBD than adult IBD.<sup>17</sup>

Calcium-binding protein S100A12 (abbreviated as S100A12 or calgranulin-c) is a biological marker of IBD that can be found in the feces of patients with IBD.<sup>22</sup> This compound is derived from the infiltration of neutrophils in the inflamed intestinal mucosa.<sup>18</sup> The use of the fecal S100A12 has shown excellent accuracy in diagnosing IBD. However, to our knowledge, no systematic review and meta-analysis have discussed the use of fecal S100A12 as a non-invasive diagnostic tool for pediatric IBD. Therefore, this study aimed to evaluate the accuracy of fecal S100A12 in diagnosing IBD in pediatric patients.

## Materials and methods

### Study protocol and reference guidelines

The protocol of this systematic review and meta-analysis has been previously registered on the International Prospective Register of Systematic Reviews (PROSPERO) (<https://www.crd.york.ac.uk/prospero/>) with the registration number CRD42021273493.<sup>23</sup> This study was carried out according to the Preferred Reporting Items for Systematic Reviews and Meta-Analysis (PRISMA) 2020 guidelines.<sup>24</sup>

## Data search strategy

A systematic and computerized data search was performed in PubMed, Scopus, Web of Science, ProQuest, and CINAHL (via EBSCOhost) for published studies from inception to July 15, 2021. Keywords were constructed using Medical Subject Headings (MeSH) terms and other free-text terms, which included 'S100A12', 'inflammatory bowel disease', 'pediatric', 'child', and 'adolescent'. The detailed search terms used in each database are listed in Supplementary Material, Table S1. The overall study selection process was conducted independently by two investigators (BS and VV). Any discrepancies in the results were resolved by a consensus involving a third investigator (AP).

## Eligibility criteria

Studies were included on meeting the following criteria: (1) used an observational design (cohort study, cross-sectional, or case-control study); (2) included a pediatric population aged < 18 years; (3) evaluated the role of fecal S100A12 in pediatric IBD; and (4) evaluated fecal S100A12 levels in the non-IBD and IBD groups or fecal S100A12 accuracy parameters (sensitivity and specificity) for diagnosing pediatric IBD. The exclusion criteria were as follows: (1) duplicated records; (2) records with irrelevant titles or abstracts; (3) articles with irretrievable full text; (4) review articles, case reports, case series, letters to editors, or conference abstracts; and (5) non-English studies.

## Data extraction and quality assessment

The following relevant data were extracted from each included study: first author, year of publication, study location, study design, characteristics of the study population, diagnostic criteria for pediatric IBD, fecal S100A12 assay, sample size, age, fecal S100A12 values in the non-IBD and IBD groups, and cut-off, and diagnostic accuracy parameters. Data extraction was conducted by two authors independently (BS and VV) and was further validated by a third author (AP).

The quality of diagnostic studies was assessed using the Quality Assessment of Diagnostic Accuracy Studies 2 (QUADAS-2) tool.<sup>25</sup> The QUADAS-2 tool evaluates the risk of bias and concerns regarding the applicability of studies in four domains: (1) patient selection, (2) index test, (3) reference standard, and (4) flow and timing. Each domain was judged as 'high,' 'low,' or 'unclear.' The quality of non-diagnostic studies was assessed using the Newcastle-Ottawa Scale (NOS) for case-control studies because all the non-diagnostic studies used a case-control design. The quality of studies was categorized as 'high' if the total NOS score was 7–9, 'moderate' if it was 4–6, and 'low' if it was 0–3. Two investigators independently performed the quality assessments (BS and AP); any disagreements were resolved by a third independent investigator (VV).

## Statistical analysis

Statistical analyses were conducted using Review Manager version 5.4 (The Cochrane Collaboration, The Nordic Cochrane centre, Copenhagen, Denmark), STATA version

16.0 (Stata Corporation, College Station, TX, USA), and Meta-DiSc version 1.4.<sup>26</sup> The authors performed a meta-analysis of standardized mean difference (SMD) to compare the levels of fecal S100A12 in the non-IBD versus IBD groups and diagnostic test accuracy (DTA) meta-analysis of fecal S100A12 in the diagnosis of pediatric IBD. For conducting the meta-analysis of SMD, data reported in median and interquartile range (IQR) or range was extrapolated into mean and standard deviation (SD) using methods suggested by Wan et al.<sup>27</sup> and Luo et al.<sup>28</sup> Given the variability in the population characteristics, IBD diagnostic criteria, and fecal S100A12 assay methods between studies, a random-effects model for the meta-analysis was primarily applied. Publication bias was assessed qualitatively using the funnel plot and quantitatively using Egger's regression test.<sup>29</sup> Sensitivity analysis was performed using the leave-one-out method.

DTA meta-analysis using a bivariate method was carried out to obtain the pooled sensitivity, specificity, positive likelihood ratio (PLR), negative likelihood ratio (NLR), diagnostic score, diagnostic odds ratio (DOR), and area under the summary receiver operating characteristic (AUSROC) curve, along with their corresponding 95% confidence intervals (CI). Spearman's correlation analysis was conducted to detect the presence of a threshold effect. The threshold effect is one of the causes of heterogeneity in DTA meta-analysis, which arises owing to the variability of cut-off values used between the studies. A positive Spearman correlation coefficient with  $p < 0.05$  indicated a significant threshold effect.<sup>30</sup> Publication bias was assessed quantitatively using Deeks' funnel plot.<sup>31</sup> Additionally, the authors performed Z-tests<sup>32</sup> to indirectly compare the pooled sensitivities, specificities, and AUSROC curve values of fecal S100A12 obtained from this study with fecal calprotectin obtained from previous meta-analyses by Henderson et al.<sup>17</sup> and Holtman et al.<sup>33</sup> Furthermore, the authors performed subgroup and meta-regression analyses to determine the cause of heterogeneity and other covariates that might affect the pooled result. Subgroup analyses were performed based on study location, study design, type of pediatric IBD diagnostic criteria, and fecal S100A12 assay method, while meta-regression analyses were performed for sample size and mean population age.

Heterogeneity between studies was assessed using Cochran's  $Q$  statistics and quantified using  $I^2$  statistics, where  $I^2$  values of 0%, 25%, 50%, and 75% indicated negligible, low, moderate, and high heterogeneity, respectively. A  $p < 0.05$  was used to indicate statistical significance in all analyses.

## Results

### Selection of studies

Initial searches of five databases yielded 317 records, and 249 records remained after removing duplicates. Of these, 231 were excluded due to irrelevant titles, abstracts, or no fulltext available. The remaining 18 articles were reviewed thoroughly based on the eligibility criteria. Twelve articles were excluded because of the following reasons: adult population ( $n = 4$ ), did not perform fecal S100A12 measurements ( $n = 2$ ), did not evaluate outcomes related to pediatric IBD

( $n = 3$ ), review articles ( $n = 2$ ), and a letter to the editor ( $n = 1$ ). Additionally, the authors identified one eligible study from outside the databases. Accordingly, seven studies<sup>34–40</sup> were included in this systematic review. However, one study by Pham et al.<sup>38</sup> was further excluded from the meta-analysis because of its overlapping population with other studies. The entire study selection process is shown in Figure 1.

### Characteristics of the included studies

The seven included studies comprised 712 children and adolescents aged  $< 18$  years, of whom 474 were non-IBD controls and 238 were patients with IBD. Of the overall patients with IBD, 172 were of CD, 60 were of UC, and 6 were of IBD-unclassified (IBDU) types. Most were case-control studies, and two—by Sidler et al.<sup>35</sup> and Heida et al.<sup>37</sup>—were cross-sectional studies. The diagnostic criteria for IBD and fecal S100A12 assay methods varied among studies. The characteristics of the included studies are summarized in Table 1.

### Study quality assessment

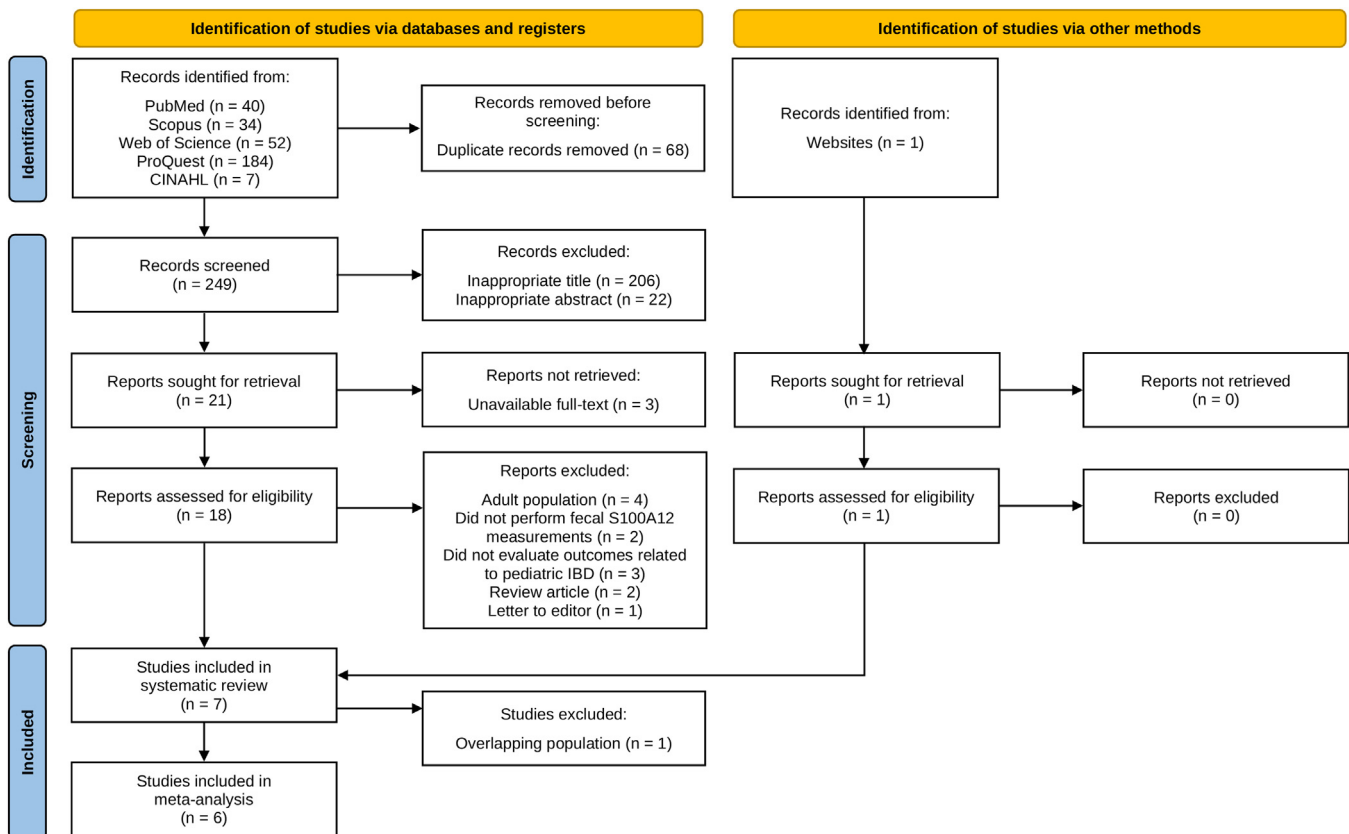
The results of the quality assessment of the diagnostic studies using the QUADAS-2 tool are presented in Figure 2. In the patient selection domain, two studies[34,36] had a high risk of bias because of the case-control design. All the studies had a low risk of bias in the index test domain. One study [36] was judged to have an unclear risk of bias in the reference standard domain because of unclear information on whether the diagnosis of IBD was made without knowledge of the fecal S100A12 results. In the flow and timing domain, two studies[36,37] had high risk, and one[35] had an unclear risk of bias because the interval from the start of IBD diagnosis to fecal S100A12 measurement was either significant or not clearly reported. All studies had low concerns regarding their applicability in all domains. According to the NOS, all non-diagnostic studies[38–40] were of high quality (NOS score = 7) (Supplementary Material, Table S2).

### SMD meta-analysis of fecal S100A12

Four studies[34,35,39,40] involving 91 pediatric patients with IBD and 108 non-IBD controls were included in this meta-analysis (Figure 3A). The results showed that the fecal levels of S100A12 in the pediatric IBD group were significantly higher than those in the non-IBD group (SMD = 1.88; 95% CI = 1.19–2.58;  $p < 0.0001$ ). The heterogeneity level was high ( $I^2 = 74%$ ). The funnel plot demonstrated an asymmetrical distribution of studies (Figure 3B), and Egger's test showed a significant result ( $p = 0.0007$ ), indicating potential publication bias. The sensitivity analysis revealed no substantial influence on the significance of the pooled effect size when each study was excluded from the analysis.

### DTA meta-analysis of fecal S100A12

Four diagnostic studies[34–37] were included in this meta-analysis. The result revealed that fecal S100A12 could detect pediatric IBD with a pooled sensitivity of 95% (95% CI = 88%–98%), specificity of 97% (95% CI = 95%–98%), PLR of 33.66 (95% CI = 18.57–61.03), NLR of 0.06 (95% CI = 0.02–0.13), a diagnostic score of 6.41 (95%



**Figure 1** PRISMA flow diagram of the study selection process. CINAHL, Cumulative Index to Nursing and Allied Health Literature; IBD, inflammatory bowel disease; PRISMA, Preferred Reporting Items for Systematic Reviews and Meta-Analyses.

CI = 5.43–7.38), DOR of 605.62 (95% CI = 227.98–1608.80), and AUSROC curve of 0.99 (95% CI = 0.97–0.99) (Figure 4A–G). The Spearman's coefficient was +0.316 ( $p = 0.68$ ), indicating no threshold effect. Deeks' funnel plot showed no potential publication bias ( $p = 0.36$ ) (Figure 4H). The results of the subgroup analyses revealed significant differences in fecal S100A12 diagnostic accuracy between studies conducted in Australia and other than Australia ( $p < 0.05$ ), case-control and cross-sectional studies ( $p < 0.05$ ), studies using standard and other IBD diagnostic criteria ( $p < 0.05$ ), and studies using in-house ELISA and other types of ELISA ( $p < 0.05$ ). Meta-regression analysis showed that differences in sample size and mean population age between studies had no significant effect on overall fecal S100A12 diagnostic accuracy (Figure 5).

### Diagnostic accuracy comparison of fecal S100A12 and fecal calprotectin

The pooled sensitivity and specificity of fecal calprotectin were obtained from Henderson et al.,<sup>17</sup> whereas the AUSROC curve value was obtained from Holtman et al.<sup>33</sup> (Table 2). The results showed no significant difference ( $Z = 0.99$ ;  $p = 0.32$ ) between the pooled sensitivities of fecal S100A12 and calprotectin (95% vs. 97.8%). The pooled specificity of fecal S100A12 was significantly higher ( $Z = 3.12$ ;  $p = 0.002$ ) than that of fecal calprotectin (97% vs. 68.2%). Additionally,

the AUSROC curve value of fecal S100A12 was significantly higher ( $Z = 2.91$ ;  $p = 0.004$ ) than that of fecal calprotectin (0.99 vs. 0.95).

### Discussion

The study results showed higher S100A12 levels in the IBD group than in the non-IBD group. Fecal S100A12 also had a very high AUSROC curve value of 0.99. This value is categorized as an outstanding accuracy (0.90–1.00). A good diagnostic tool should have a PLR > 10 and an NLR < 0.1.<sup>41</sup> Based on the study results, S100A12 feces met both values. The comparison of fecal S100A12 with fecal calprotectin showed a significant difference in AUSROC curve values and specificity, with no difference in sensitivity values. Thus, indicating that fecal S100A12 has a better overall diagnostic potential than fecal calprotectin. This finding is consistent with previous studies, which stated that calprotectin had moderate specificity, whereas the specificity of S100A12 was very good.<sup>42–45</sup>

Moreover, S100A12 is an antimicrobial that plays a role in initiating a pro-inflammatory response in the digestive tract.<sup>46</sup> It is one of the receptors for advanced glycation end product (RAGE) ligands.<sup>47,48</sup> Activated RAGE induces the production of pro-inflammatory mediators such as tumor necrosis factor (TNF)- $\alpha$  and further promotes the release of S100A12 from neutrophils.<sup>49</sup> The accumulation of

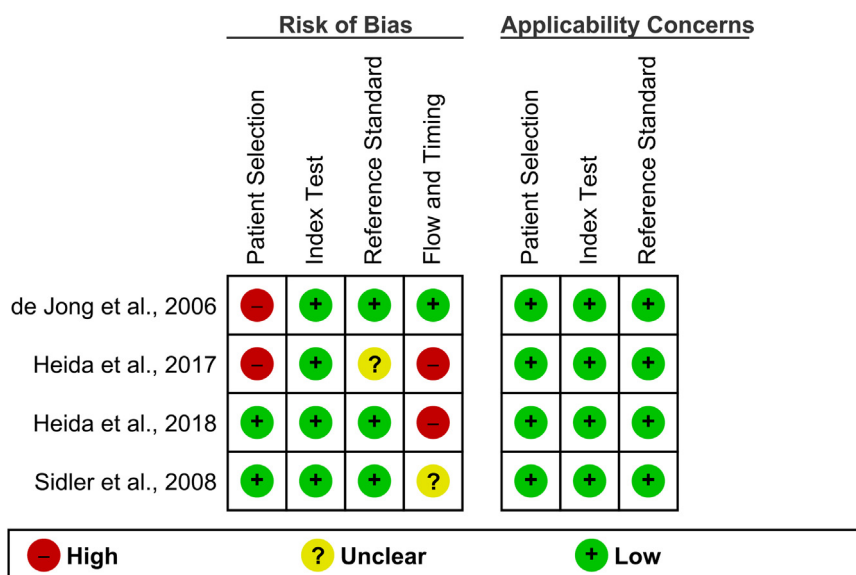
**Table 1** Summary of the main characteristics of included studies in the systematic review.

Author, Year	Study Location	Study Design	Population Characteristics	IBD Diagnostic Criteria	Fecal S100A12 Assay	Sample Size			Age <sup>a</sup>	AUC (95% CI)	Cut-Off	
						Non-IBD	IBD					
							CD	UC				IBDU
de Jong et al., 2006 <sup>34</sup>	Australia	Case-control	Case: Children diagnosed with IBD at the hospital Control: Healthy children from families of hospital staff	Standard criteria with clinical, endoscopic, histological, and imaging findings	In-house ELISA	25	22	1	0	8.98 ± 4.28	0.98	10 mg/kg (pre-defined)
Sidler et al., 2008 <sup>35</sup>	Australia	Cross-sectional	Children presenting with GI symptoms who were suspected of having organic bowel disease, which required further examination Case: Diagnosed with IBD Control: Diagnosed other than IBD	Standard criteria with clinical, endoscopic, histological, and imaging findings	In-house ELISA	30	30	1	0	11.11 ± 3.52	0.99 (0.97–1.01)	10 mg/kg (pre-defined)
Heida et al., 2017 <sup>36</sup>	Netherlands	Case-control	Case: Children diagnosed with IBD at the hospital Control: Healthy school children	European Society for Pediatric Gastroenterology Hepatology and Nutrition	Inflamark® ELISA	122 (one outlier was excluded from accuracy analysis)	21	19	1	12.24 ± 3.73	0.97 (0.93–1.00)	0.75 µg/g (pre-defined)
Heida et al., 2018 <sup>37</sup>	Netherlands and Belgium	Cross-sectional	Children presenting with persistent diarrhea for > 4 weeks or chronic/recurrent abdominal pain Case: Diagnosed with IBD Control: Diagnosed other than IBD	IBD Risk Stratifier (Endoscopy with biopsy or clinical follow-up)	Inflamark® ELISA	244	52	39	2	N/A	N/A	0.75 µg/g (pre-defined)
Pham et al., 2010 <sup>38</sup>	Australia	Case-control	Case: Children diagnosed with CD at the hospital Control: Same control population as Sidler et al., 2008 <sup>35</sup>	Standard criteria with clinical, endoscopic, histological, and imaging findings	In-house ELISA	30	13	0	0	N/A	N/A	N/A
Ehn, 2011 <sup>39</sup>	Sweden	Case-control	Case: children diagnosed with IBD at the hospital Control: Healthy children from outpatient clinic, pediatric ward, or family of hospital staff	Standard criteria	In-house ELISA	38	7	0	3	5.08 ± 5.15	N/A	N/A
Nylund et al., 2011 <sup>40</sup>	United States	Case-control	Case: Children diagnosed with CD at the hospital Control: Healthy children from local communities	Standard diagnostic criteria with clinical, endoscopic, and radiographic findings	Double sandwich ELISA	15	27	0	0	N/A	N/A	N/A

<sup>a</sup> Data are presented in mean ± SD.

AUC, area under curve; CD, Crohn's disease; CI, confidence interval; ELISA, enzyme-linked immunosorbent assay; GI, gastrointestinal; IBD, inflammatory bowel disease; IBDU, inflammatory bowel disease unclassified; N/A, not available; SD, standard deviation; UC, ulcerative colitis.





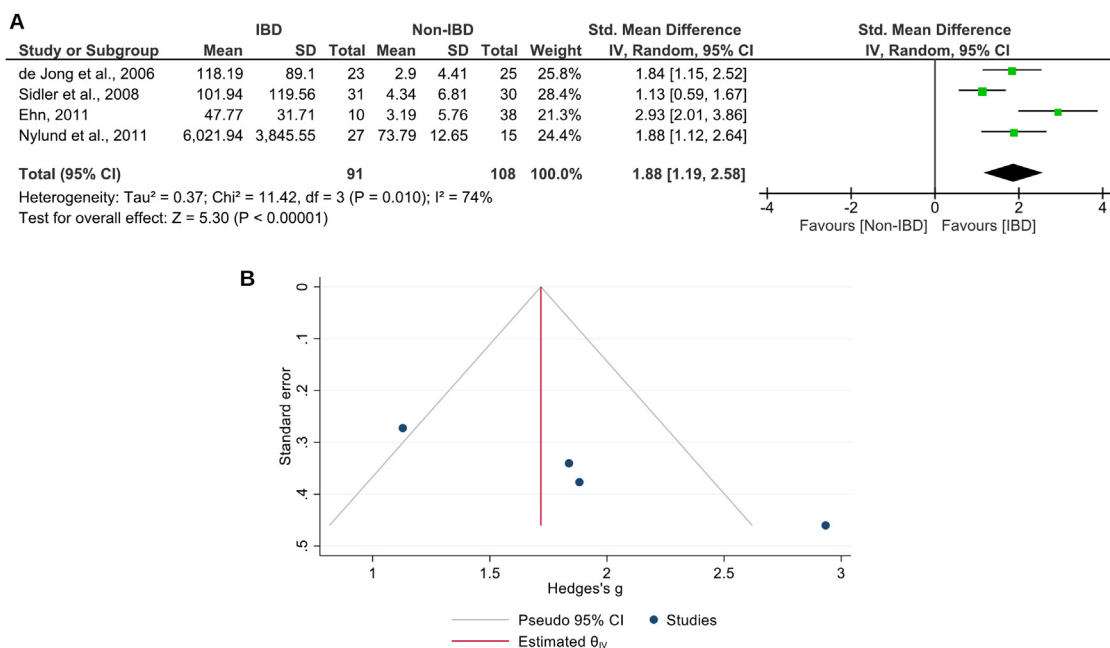
**Figure 2** Quality assessment results of the included diagnostic accuracy studies according to QUADAS-2 tool. QUADAS-2; Quality Assessment of Diagnostic Accuracy Studies 2.

inflammatory mediators, such as TNF- $\alpha$ , is closely related to the pathogenesis of IBD.<sup>50,51</sup> S100A12 derived from neutrophil infiltration in the inflamed intestine is then found in feces and is used as a fecal biologic marker.<sup>15</sup>

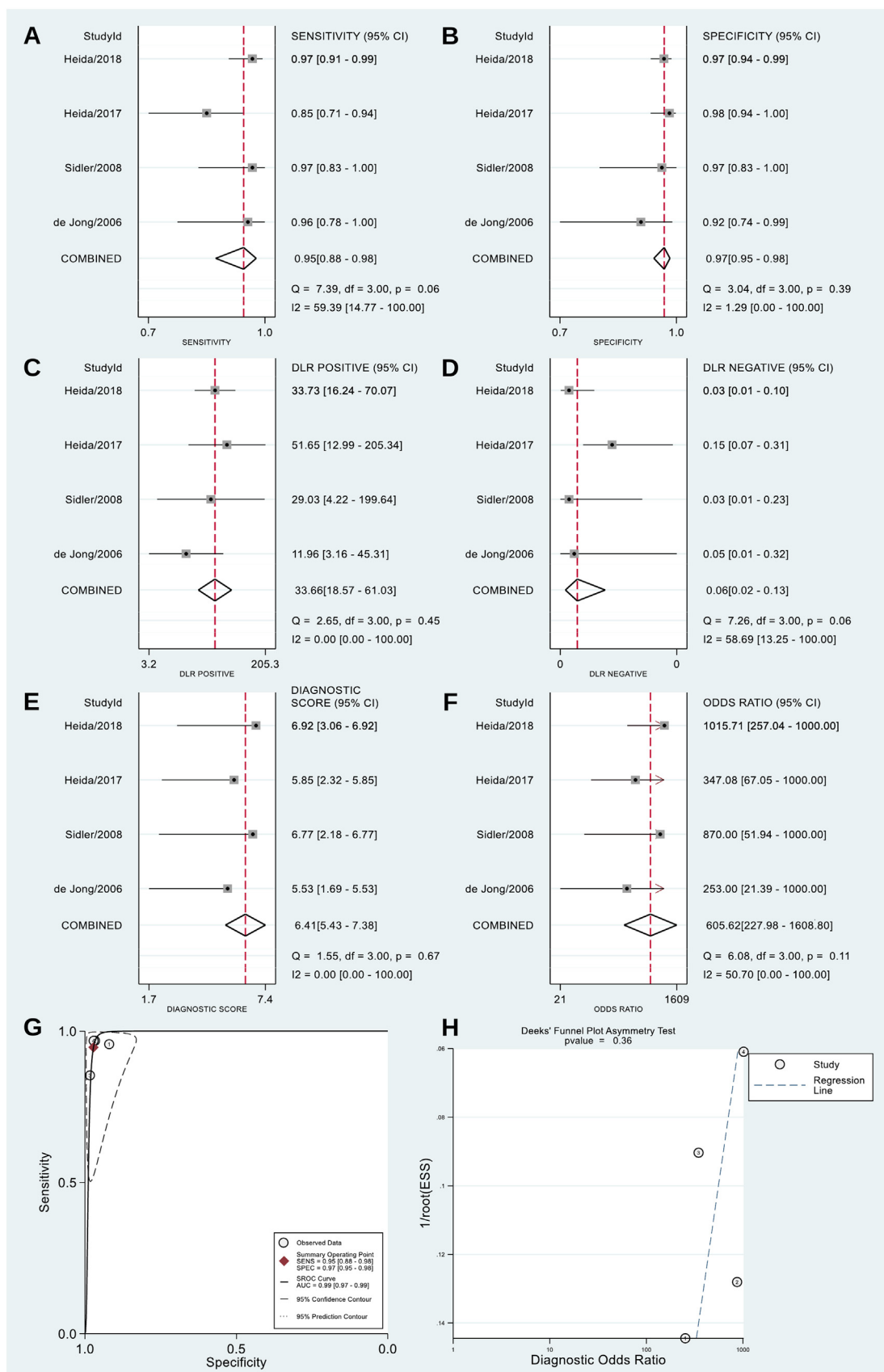
Fecal S100A12 showed better AUSROC curve values and specificity than fecal calprotectin in pediatric IBD because the specific expression of S100A12 was limited to the activation of neutrophils and monocytes.<sup>18,52</sup> However, other findings suggest that the AUSROC curve value, sensitivity, and specificity of the two fecal markers are equally good in adult patients.<sup>53</sup> Fecal calprotectin levels were found to vary in

children aged younger than 10 years – having higher levels than those in children aged older than 10 years.<sup>54</sup> Therefore, it is necessary to adjust the cut-off when using fecal calprotectin for diagnosing pediatric IBD.<sup>55</sup> Fecal S100A12 levels are relatively constant throughout age, except in those younger than 12 months old.<sup>56</sup> The results of the meta-regression, with age as a covariate, further suggested that the diagnostic ability of fecal S100A12 is uniform across a range of ages of pediatric patients.

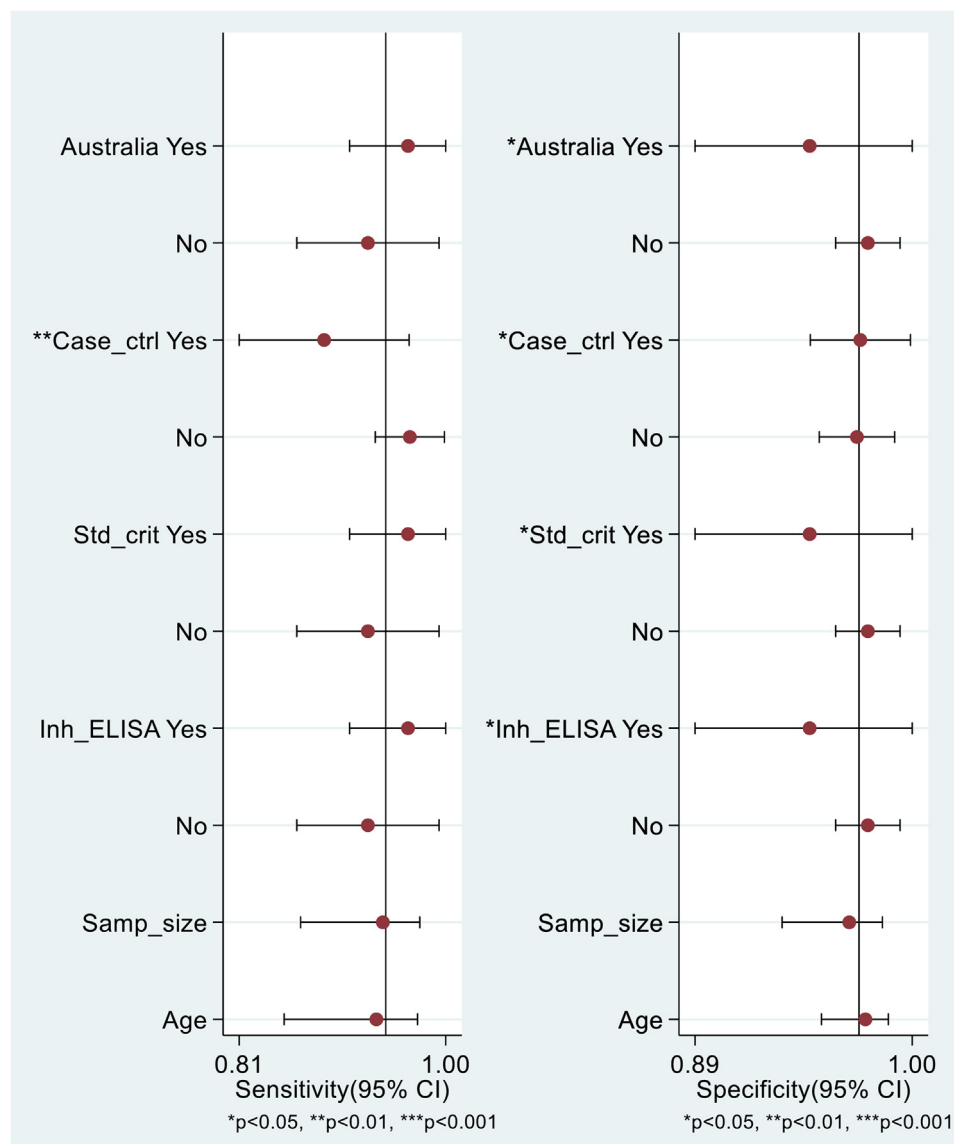
To our knowledge, the present study is the first to analyze the pooled SMD values and diagnostic accuracy parameters



**Figure 3** Meta-analysis of the comparison between fecal S100A12 levels in pediatric patients with IBD and non-IBD cases. (A) Forest plot. (B) Funnel plot. CI, confidence interval; IBD, inflammatory bowel disease; IV, inverse variance; SD, standard deviation.



**Figure 4** Meta-analysis of the diagnostic accuracy of fecal S100A12 for identifying pediatric IBD. (A) Sensitivity. (B) Specificity. (C) PLR. (D) NLR. (E) Diagnostic score. (F) DOR. (G) AUSROC curve. (H) Deeks' funnel plot. AUC, area under curve; AUSROC, area under the summary receiver operating characteristic; CI, confidence interval; DLR, diagnostic likelihood ratio; DOR, diagnostic odds ratio;



**Figure 5** Subgroup and meta-regression analyses for the diagnostic accuracy meta-analysis of fecal S100A12 for identifying pediatric IBD. CI, confidence interval.

of fecal S100A12 for diagnosing pediatric IBD. This study has several limitations. First, the present study found significant heterogeneity in the pooled SMD meta-analysis results. Second, this study did not separate CD and UC groups. S100A12 may have different roles in CD and UC due to the different roles of RAGE in the two types of IBD.<sup>47</sup> Separation of patient groups could not be performed because there were no studies that separately analyzed the two types of IBD. Third, other clinical conditions were still not assessed. Finally, the number of included studies and total sample size was still limited.

## Conclusions

This study demonstrated an increase in the fecal levels of S100A12 in pediatric patients with IBD and supported its use as a non-invasive tool to facilitate the diagnosis of pediatric IBD with excellent accuracy. Given the limitations of the present study, the authors encourage more large research evaluating fecal S100A12 for diagnosing pediatric IBD, ideally for separate populations of CD and UC, and directly comparing its diagnostic accuracy with fecal calprotectin to corroborate the authors' findings.



Table 2 Comparison of the diagnostic accuracy of fecal S100A12 and fecal calprotectin for identifying pediatric IBD.

Diagnostic Accuracy Parameter	Fecal S100A12					Fecal Calprotectin					Comparison Result		
	Number of Studies	Total Sample	Pooled Value	95% CI	SE	Author, Year	Number of Studies	Total Sample	Pooled Value	95% CI	SE	Z	p
Sensitivity	4	608	95%	88%–98%	2.55	Henderson et al., 2014 <sup>17</sup>	8	715	97.8%	94.7%–99.6%	1.25	0.99	0.32
Specificity			97%	95%–98%	0.77	Holtman et al., 2017 <sup>33</sup>	6	593	68.2%	50.2%–86.3%	9.21	3.12	0.002 <sup>a</sup>
AUC			0.99	0.97–0.99	0.01				0.95	0.93–0.98	0.01	2.91	0.004 <sup>a</sup>

<sup>a</sup>  $p < 0.05$ .

AUC, area under curve; CI, confidence interval; IBD, inflammatory bowel disease; SE, standard error.

## Conflicts of interest

The authors declare no conflicts of interest.

## Supplementary materials

Supplementary material associated with this article can be found in the online version at [doi:10.1016/j.jpmed.2023.03.002](https://doi.org/10.1016/j.jpmed.2023.03.002).

## References

- Molodecky NA, Soon IS, Rabi DM, Ghali WA, Ferris M, Chernoff G, et al. Increasing incidence and prevalence of the inflammatory bowel diseases with time, based on systematic review. *Gastroenterology*. 2012;142:46–54. e42.
- Ye Y, Manne S, Treem WR, Bennett D. Prevalence of inflammatory bowel disease in pediatric and adult populations: recent estimates from large national databases in the United States, 2007-2016. *Inflamm Bowel Dis*. 2020;26:619–25.
- Sýkora J, Pomahačová R, Kreslová M, Cvalínová D, Štych P, Schwarz J. Current global trends in the incidence of pediatric-onset inflammatory bowel disease. *World J Gastroenterol*. 2018;24:2741–63.
- Däbritz J, Gerner P, Enninger A, Claßen M, Radke M. Inflammatory bowel disease in childhood and adolescence - diagnosis and treatment. *Dtsch Arztebl Int*. 2017;114:331–8.
- Moran CJ. Very early onset inflammatory bowel disease. *Semin Pediatr Surg*. 2017;26:356–9.
- de Laffolie J, Laass MW, Scholz D, Zimmer KP, Buderus S. CEDATA-GPGE Study Group. Prevalence of anemia in pediatric IBD patients and impact on disease severity: results of the pediatric IBD-Registry CEDATA-GPGE®. *Gastroenterol Res Pract*. 2017;2017:8424628.
- Goyal A, Zheng Y, Albenberg LG, Stoner NL, Hart L, Alkhoury R, et al. Anemia in children with inflammatory bowel disease: a position paper by the IBD committee of the north American society of pediatric gastroenterology, hepatology and nutrition. *J Pediatr Gastroenterol Nutr*. 2020;71:563–82.
- Sairenji T, Collins KL, Evans DV. An update on inflammatory bowel disease. *Prim Care*. 2017;44:673–92.
- Buderus S, Scholz D, Behrens R, Classen M, De Laffolie J, Keller KM, et al. Inflammatory bowel disease in pediatric patients: characterization of newly diagnosed patients from the CEDATA-GPGE Register. *Dtsch Arztebl Int*. 2015;112:121–7.
- Mackner LM, Whitaker BN, Maddux MH, Thompson S, Hughes-reid C, Drovetta M, et al. Depression screening in pediatric inflammatory bowel disease clinics: recommendations and a toolkit for implementation. *J Pediatr Gastroenterol Nutr*. 2020;70:42–7.
- Kelsen JR, Sullivan KE, Rabizadeh S, Singh N, Snapper S, Elkadri A, et al. North American society for pediatric gastroenterology, hepatology, and nutrition position paper on the evaluation and management for patients with very early-onset inflammatory bowel disease. *J Pediatr Gastroenterol Nutr*. 2020;70:389–403.
- Uhlig HH, Schwerd T, Koletzko S, Shah N, Kammermeier J, Elkadri A, et al. The diagnostic approach to monogenic very early onset inflammatory bowel disease. *Gastroenterology*. 2014;147:990–1007. e3.
- Crowley E, Warner N, Pan J, Khalouei S, Elkadri A, Fiedler K, et al. Prevalence and clinical features of inflammatory bowel diseases associated with monogenic variants, identified by whole-exome sequencing in 1000 children at a single center. *Gastroenterology*. 2020;158:2208–20.

14. Rizzello F, Spisni E, Giovanardi E, Imbesi V, Salice M, Alvisi P, et al. Implications of the westernized diet in the onset and progression of IBD. *Nutrients*. 2019;11:1–24.
15. Loktionov A, Chhaya V, Bandaletova T, Poullis A. Inflammatory bowel disease detection and monitoring by measuring biomarkers in non-invasively collected colorectal mucus. *J Gastroenterol Hepatol*. 2017;32:992–1002.
16. Rosen MJ, Dhawan A, Saeed SA. Inflammatory bowel disease in children and adolescents. *JAMA Pediatr*. 2015;169:1053–60.
17. Henderson P, Anderson NH, Wilson DC. The diagnostic accuracy of fecal calprotectin during the investigation of suspected pediatric inflammatory bowel disease: a systematic review and meta-analysis. *Am J Gastroenterol*. 2014;109:637–45.
18. Lehmann FS, Burri E, Beglinger C. The role and utility of faecal markers in inflammatory bowel disease. *Therap Adv Gastroenterol*. 2015;8:23–36.
19. Kopylov U, Rosenfeld G, Bressler B, Seidman E. Clinical utility of fecal biomarkers for the diagnosis and management of inflammatory bowel disease. *Inflamm Bowel Dis*. 2014;20:742–56.
20. Fukunaga S, Kuwaki K, Mitsuyama K, Takedatsu H, Yoshioka S, Yamasaki H, et al. Detection of calprotectin in inflammatory bowel disease: fecal and serum levels and immunohistochemical localization. *Int J Mol Med*. 2018;41:107–18.
21. Walsham NE, Sherwood RA. Fecal calprotectin in inflammatory bowel disease. *Clin Exp Gastroenterol*. 2016;9:21–9.
22. van de Logt F, Day AS. S100A12: a noninvasive marker of inflammation in inflammatory bowel disease. *J Dig Dis*. 2013;14:62–7.
23. Witarto B.S., Visuddho V., Witarto A.P. Performance of fecal S100A12 as a novel noninvasive diagnostic biomarker in pediatric inflammatory bowel disease: a systematic review and meta-analysis. PROSPERO 2021 CRD42021273493 Available from: [https://www.crd.york.ac.uk/prospero/display\\_record.php?ID=CRD42021273493](https://www.crd.york.ac.uk/prospero/display_record.php?ID=CRD42021273493)
24. Page MJ, McKenzie JE, Bossuyt PM, Boutron I, Hoffmann TC, Mulrow CD, et al. The PRISMA 2020 statement: an updated guideline for reporting systematic reviews. *BMJ*. 2021;372:n71.
25. Whiting PF, Rutjes AW, Westwood ME, Mallett S, Deeks JJ, Reitsma JB, et al. QUADAS-2: a revised tool for the quality assessment of diagnostic accuracy studies. *Ann Intern Med*. 2011;155:529–36.
26. Zamora J, Abaira V, Muriel A, Khan K, Coomarasamy A. Meta-DiSc: a software for meta-analysis of test accuracy data. *BMC Med Res Methodol*. 2006;6:1–12.
27. Wan X, Wang W, Liu J, Tong T. Estimating the sample mean and standard deviation from the sample size, median, range and/or interquartile range. *BMC Med Res Methodol*. 2014;14:1–13.
28. Luo D, Wan X, Liu J, Tong T. Optimally estimating the sample mean from the sample size, median, mid-range, and/or mid-quartile range. *Stat Methods Med Res*. 2018;27:1785–805.
29. Egger M, Smith GD, Schneider M, Minder C. Bias in meta-analysis detected by a simple, graphical test. *Br Med J*. 1997;315:629–34.
30. Jia MM, Deng J, Cheng XL, Yan Z, Li QC, Xing YY, et al. Diagnostic accuracy of urine HE4 in patients with ovarian cancer: a meta-analysis. *Oncotarget*. 2017;8:9660–71.
31. Deeks JJ, Macaskill P, Irwig L. The performance of tests of publication bias and other sample size effects in systematic reviews of diagnostic test accuracy was assessed. *J Clin Epidemiol*. 2005;58:882–93.
32. Feng S, Wang Z, Zhao Y, Tao C. Wisteria floribunda agglutinin-positive Mac-2-binding protein as a diagnostic biomarker in liver cirrhosis: an updated meta-analysis. *Sci Rep*. 2020;10:1–13.
33. Holtman GA, Lisman-van Leeuwen Y, Day AS, Fagerberg UL, Henderson P, Leach ST, et al. Use of laboratory markers in addition to symptoms for diagnosis of inflammatory bowel disease in children: a meta-analysis of individual patient data. *JAMA Pediatr*. 2017;171:984–91.
34. de Jong NS, Leach ST, Day AS. Fecal S100A12: a novel noninvasive marker in children with Crohn's disease. *Inflamm Bowel Dis*. 2006;12:566–72.
35. Sidler MA, Leach ST, Day AS. Fecal S100A12 and fecal calprotectin as noninvasive markers for inflammatory bowel disease in children. *Inflamm Bowel Dis*. 2008;14:359–66.
36. Heida A, Kobold AC, Wagenmakers L, De Belt K van, Rhee PF. Reference values of fecal calgranulin C (S100A12) in school aged children and adolescents. *Clin Chem Lab Med*. 2017;56:126–31.
37. Heida A, Van De Vijver E, Van Ravenzwaaij D, Van Biervliet S, Hummel TZ, Yuksel Z, et al. Predicting inflammatory bowel disease in children with abdominal pain and diarrhoea: calgranulin-C versus calprotectin stool tests. *Arch Dis Child*. 2018;103:565–71.
38. Pham M, Leach ST, Lemberg DA, Day AS. Subclinical intestinal inflammation in siblings of children with crohn's disease. *Dig Dis Sci*. 2010;55:3502–7.
39. Ehn M. Levels of fecal S100A12 in Normal Children and Children with Inflammatory Bowel disease [doctorate thesis]. Uppsala, Sweden: Uppsala University; 2011.
40. Nylund CM, D'Mello S, Kim MO, Bonkowski E, Däbritz J, Foell D, et al. Granulocyte macrophage-colony-stimulating factor autoantibodies and increased intestinal permeability in crohn disease. *J Pediatr Gastroenterol Nutr*. 2011;52:542–8.
41. Borges LS. Diagnostic accuracy measures in cardiovascular research. *Int J Cardiovasc Sci*. 2016;29:218–22.
42. Däbritz J, Langhorst J, Lügering A, Heidemann J, Mohr M, Wittkowski H, et al. Improving relapse prediction in inflammatory bowel disease by neutrophil derived S100A12. *Inflamm Bowel Dis*. 2013;19:1130–8.
43. Galgut BJ, Lemberg DA, Day AS, Leach ST. The value of fecal markers in predicting relapse in inflammatory bowel diseases. *Front Pediatr*. 2018;5:1–6.
44. Van De Vijver E, Heida A, Ioannou S, Van Biervliet S, Hummel T, Yuksel Z, et al. Test strategies to predict inflammatory bowel disease among children with nonbloody diarrhea. *Pediatrics*. 2020;146:e20192235.
45. Naismith GD, Smith LA, Barry SJ, Munro JI, Laird S, Rankin K, et al. A prospective evaluation of the predictive value of faecal calprotectin in quiescent Crohn's disease. *J Crohn's Colitis*. 2014;8:1022–9.
46. Carvalho A, Lu J, Francis JD, Moore RE, Haley KP, Doster RS, et al. S100A12 in digestive diseases and health: a scoping review. *Gastroenterol Res Pract*. 2020:2868373.
47. Ciccocioppo R, Imbesi V, Betti E, Boccaccio V, Kruzliak P, Gallia A, et al. The circulating level of soluble receptor for advanced glycation end products displays different patterns in ulcerative colitis and Crohn's Disease: a cross-sectional study. *Dig Dis Sci*. 2015;60:2327–37.
48. Cabrera-Garcia AI, Protschka M, Alber G, Kather S, Dengler F, Müller U, et al. Dysregulation of gastrointestinal RAGE (receptor for advanced glycation end products) expression in dogs with chronic inflammatory enteropathy. *Vet Immunol Immunopathol*. 2021;234:110216.
49. Ciccocioppo R, Vanoli A, Klersy C, Imbesi V, Boccaccio V, Manca R, et al. Role of the advanced glycation end products receptor in Crohn's disease inflammation. *World J Gastroenterol*. 2013;19:8269–81.
50. Abraham BP, Ahmed T, Ali T. Inflammatory bowel disease: pathophysiology and current therapeutic approaches. *Handb Exp Pharmacol*. 2017;239:115–46.
51. Aardoom MA, Veereman G, de Ridder L. A review on the use of anti-TNF in children and adolescents with inflammatory bowel disease. *Int J Mol Sci*. 2019: 20.
52. Lopez RN, Leach ST, Lemberg DA, Duvoisin G, Gearry RB, Day AS. Fecal biomarkers in inflammatory bowel disease. *J Gastroenterol Hepatol*. 2017;32:577–82.
53. Whitehead SJ, Ford C, Gama RM, Ali A, McKaig B, Waldron JL, et al. Effect of faecal calprotectin assay variability on the

- management of inflammatory bowel disease and potential role of faecal S100A12. *J Clin Pathol.* 2017;70:1049–56.
54. Joshi S, Lewis SJ, Creanor S, Ayling RM. Age-related faecal calprotectin, lactoferrin and tumour M2-PK concentrations in healthy volunteers. *Ann Clin Biochem.* 2010;47:259–63.
  55. Kostakis ID, Cholidou KG, Vaiopoulos AG, Vlachos IS, Perrea D, Vaos G. Fecal calprotectin in pediatric inflammatory bowel disease: a systematic review. *Dig Dis Sci.* 2013;58:309–19.
  56. Day AS, Ehn M, Gearry RB, Lemberg DA, Leach ST. Fecal S100A12 in healthy infants and children. *Dis Markers.* 2013;35:295–9.