

Performing the NIHSS Assessment on Intubated Patients at Danbury Hospital

By: Samantha Acierno

The NIHSS Assessment Tool

Assesses the patient's level of consciousness, speech and language, neglect, communication, the field of vision, eye movements, facial symmetry, motor strength, sensation and coordination of the patients. To determine the severity of the stroke and treatment options for the patient

The Importance of Improving Compliance

Stroke is one of the leading causes of mortality and long-term disability

It's critical to diagnose the patient early on and treat quickly to optimize the patient's chances of survival and their ability to perform tasks thereafter

The NIHSS baseline score has a strong positive correlation with mortality (Farooque et., al, 2020)

Assessment on Intubated Patients

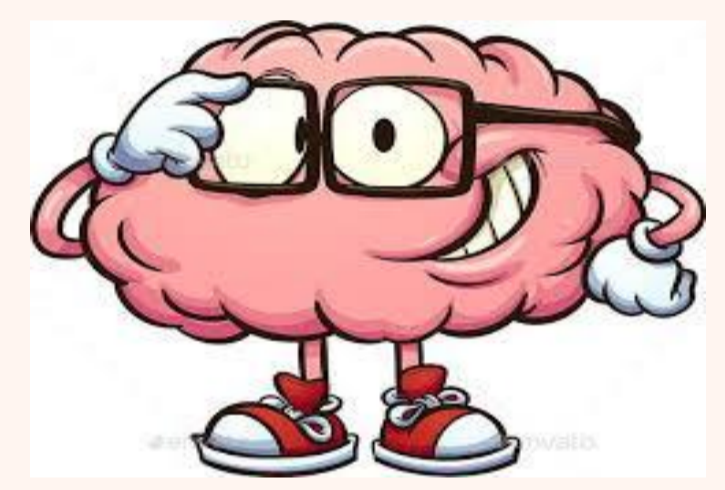
Intubation is typically seen with hemorrhagic stroke rather than ischemic stroke

Ideally, the patient should be weaned from sedation to elicit the best response

For intubated and comatose patients- there are pre-selected fields if the patient is intubated

Certification

Registered nurses are required to complete NIHSS training for certification annually



Documentation of the NIHSS

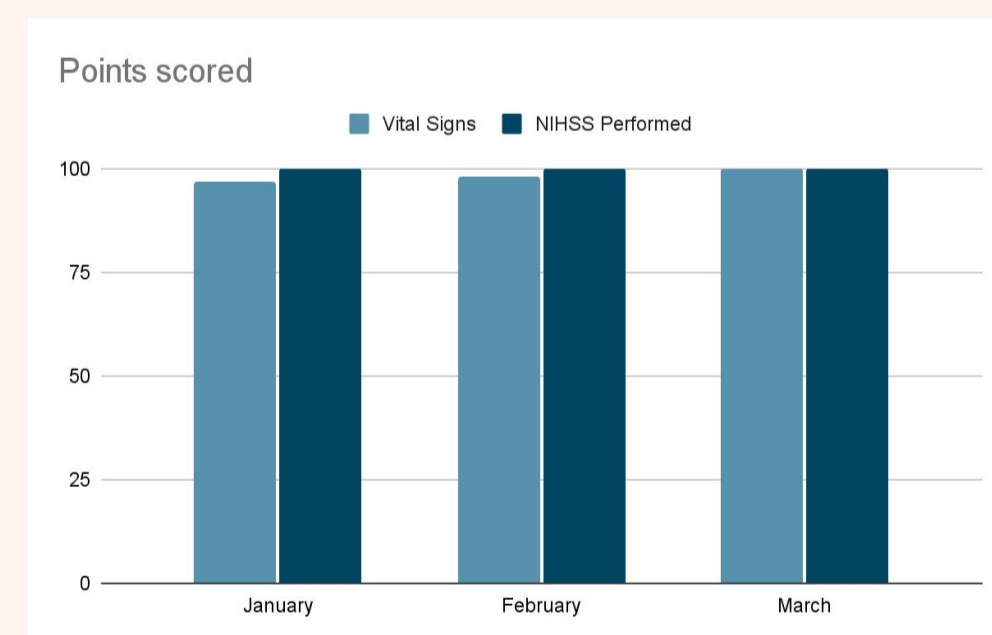
Every 15 minutes for 2 hours

Every 30 minutes for 6 hours

Hourly for 16 hours

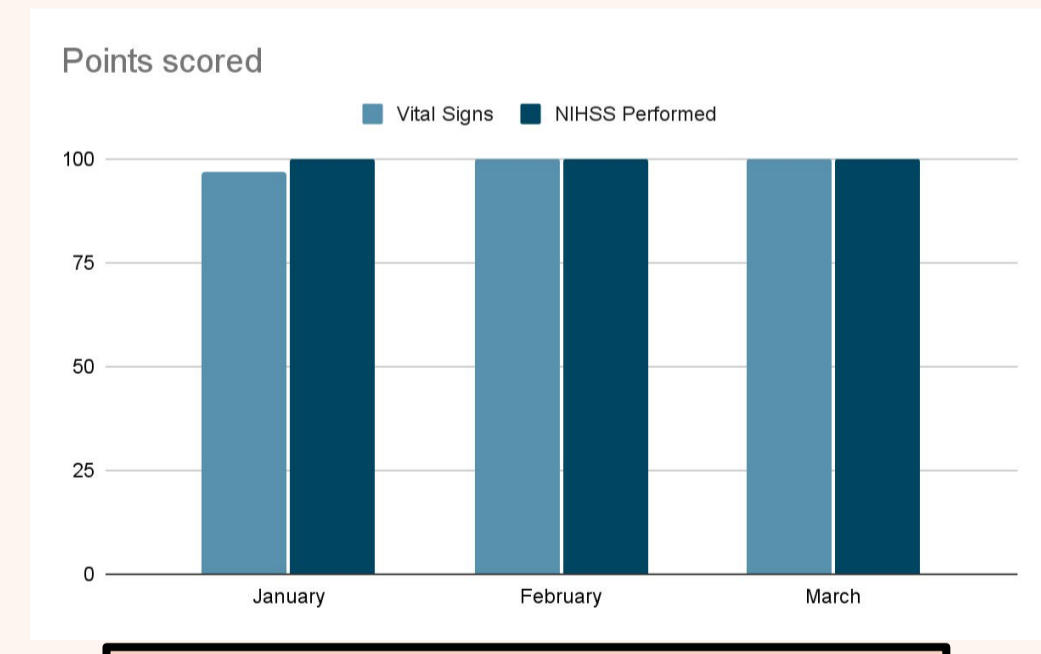
Compliance Rates in the ICU

TPA Reassessment Compliance Rates



The measure of success is 4 Consecutive months of 95% compliance In performing assessments

Thrombectomy Reassessment Compliance Rates



The past 3 months of data from the unit show that this has almost been achieved

Cultural & Diversity Considerations

The onset to needle time was significantly longer in patients with language barriers

Onset to arrival and door to imaging times were similar between English and non-English speaking

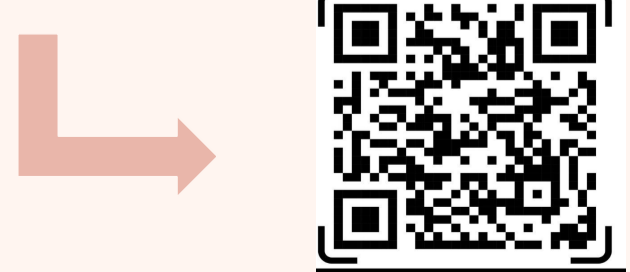
Imaging to needle time was 8.9 min delayed in patients with language barriers

It is very important to use a translator or phone interpreter when performing NIHSS assessments on clients with a language barrier for accurate results.

Summary

The purpose of this project is to give staff the education and resources to properly perform the NIHSS on their patients. The data in this brochure also shows that the Danbury ICU is 1 month of compliance away from finally achieving proper compliance in performing both vital sign and NIHSS assessments on their stroke patients, which they haven't achieved since 2022.

Assessment Tool



References

