








“Methods for assessing emotional intelligence: Prospects for application in public administration in Ukraine”

AUTHORS	Nazar Podolchak  Olena Bilyk  Veronika Karkovska  Natalia Tsygylyk  Mariia Vesolovska  
ARTICLE INFO	Nazar Podolchak, Olena Bilyk, Veronika Karkovska, Natalia Tsygylyk and Mariia Vesolovska (2023). Methods for assessing emotional intelligence: Prospects for application in public administration in Ukraine. <i>Problems and Perspectives in Management</i> , 21(2), 503-516. doi: 10.21511/ppm.21(2).2023.47
DOI	http://dx.doi.org/10.21511/ppm.21(2).2023.47
RELEASED ON	Friday, 16 June 2023
RECEIVED ON	Saturday, 01 April 2023
ACCEPTED ON	Tuesday, 06 June 2023
LICENSE	 This work is licensed under a Creative Commons Attribution 4.0 International License
JOURNAL	"Problems and Perspectives in Management"
ISSN PRINT	1727-7051
ISSN ONLINE	1810-5467
PUBLISHER	LLC “Consulting Publishing Company “Business Perspectives”
FOUNDER	LLC “Consulting Publishing Company “Business Perspectives”



NUMBER OF REFERENCES

47



NUMBER OF FIGURES

3



NUMBER OF TABLES

3

© The author(s) 2023. This publication is an open access article.



BUSINESS PERSPECTIVES



LLC "CPC "Business Perspectives"
Hryhorii Skovoroda lane, 10,
Sumy, 40022, Ukraine
www.businessperspectives.org

Received on: 1st of April, 2023

Accepted on: 6th of June, 2023

Published on: 16th of June, 2023

© Nazar Podolchak, Olena Bilyk,
Veronika Karkovska, Natalia Tsygulyk,
Mariia Vesolovska, 2023

Nazar Podolchak, Doctor in
Economics Sciences, Professor, Head
of Department of Administrative and
Financial Management, Institute of
Public Administration, Governance
and Professional Development, Lviv
Polytechnic National University,
Ukraine.

Olena Bilyk, Doctor of Science in
Public Administration, Professor,
Department of Administrative and
Financial Management, Institute of
Public Administration, Governance
and Professional Development, Lviv
Polytechnic National University,
Ukraine.

Veronika Karkovska, Doctor of Science
in Public Administration, Professor,
Department of Administrative and
Financial Management, Institute of
Public Administration, Governance
and Professional Development, Lviv
Polytechnic National University,
Ukraine.

Natalia Tsygulyk, Doctor of
Philosophy in Technical Sciences,
Associate Professor, Department
of Administrative and Financial
Management, Institute of Public
Administration, Governance and
Professional Development, Lviv
Polytechnic National University,
Ukraine.

Mariia Vesolovska, Ph.D. in Public
Management and Administration,
Associate Professor, Department
of Administrative and Financial
Management, Institute of Public
Administration, Governance and
Professional Development, Lviv
Polytechnic National University,
Ukraine. (Corresponding author)



This is an Open Access article,
distributed under the terms of the
[Creative Commons Attribution 4.0
International license](https://creativecommons.org/licenses/by/4.0/), which permits
unrestricted re-use, distribution, and
reproduction in any medium, provided
the original work is properly cited.



Conflict of interest statement:

Author(s) reported no conflict of interest

Nazar Podolchak (Ukraine), Olena Bilyk (Ukraine), Veronika Karkovska (Ukraine),
Natalia Tsygulyk (Ukraine), Mariia Vesolovska (Ukraine)

METHODS FOR ASSESSING EMOTIONAL INTELLIGENCE: PROSPECTS FOR APPLICATION IN PUBLIC ADMINISTRATION IN UKRAINE

Abstract

This study aims to establish the advantages and disadvantages of various methods for assessing emotional intelligence by comparing the most common methods in leading countries and a developing country (Ukraine) in business, as a field in which the level of emotional intelligence importance is generally recognized, and in the public administration sphere. The MSCEITV2.0 and Hall tests were chosen as the most accurate tests for determining the emotional intelligence of public managers. For a more detailed comparison of these two tests and the selection of a universal one, 100 respondents were surveyed using a questionnaire developed in Google Forms. The sample included officials of local governments in the western, northern, and central regions of Ukraine, as well as representatives of businesses in the same regions, particularly managers of private enterprises. The results indicate that these two tests show similar results when determining the level of emotional intelligence. However, when allowed to choose the testing method, 80% of public managers and business representatives chose the Hall test, which takes less time than the MSCEITV2.0 test. Considering the obtained results and the permissible error, the study identifies the Hall test as a universal method for determining the emotional intelligence of public managers in a developing country – Ukraine.

Keywords

business personnel, emotional intelligence, civil servants, public administration, public service

JEL Classification

M54, O15

INTRODUCTION

In today's conditions, the emotional intelligence of personnel is becoming increasingly relevant as a key direction of increasing the efficiency of the public and private sectors. Today, a high level of emotional intelligence has a more significant impact on successful task performance and career development than a high level of ordinary intelligence.

The understanding of emotional intelligence was initially studied as a set of cognitive abilities for identifying, understanding, and managing emotions. Further developments of emotional intelligence moved beyond intellectual abilities and began considering it as a component of emotional expression. The main task of emotional intelligence is to promote personal growth and effectiveness in interpersonal interactions and professional activities. Considering the active reforming of the new model of public administration, selecting a methodology for assessing the level of emotional intelligence is particularly relevant. It still requires thorough research with further recommendations for the most effective evaluation methods.

Usually, scientists limit themselves to two or three methods and do not emphasize their application areas. In addition, there is no research on selecting one universal test and model suitable for the adequate assessment of emotional intelligence in any country.

1. LITERATURE REVIEW

In recent decades, there has been an active study of emotional intelligence as a condition for a person's success in social interaction. Emotional intelligence affects various aspects of activity: physical and psychological health, social interaction, and success in an educational institution or workplace. The term "emotional intelligence" was first introduced by Mayer et al. (1990). They defined it as "a subset of social intelligence that includes the ability to monitor one's own and other's feelings and emotions, distinguish between them, and use this information to guide one's thinking and actions." Its components and emotional intelligence's role in mental health were clearly defined.

Buck (1991) focused on the ability of an individual to interact with the internal environment of his feelings and desires. Mayer (1993) analyzed the ability to control emotions and use them to improve thinking effectively. Bar-On (1997) targeted knowledge and competence that enable a person to overcome various situations. However, the effects of external factors on a person were not considered.

Since the 2000s, scientists have begun to conduct a comprehensive study of emotional intelligence as a set of components: self-awareness, self-motivation, resilience in the presence of adverse circumstances, impulse control, mood regulation, empathy, and optimism. Goleman's (2000) emotional intelligence theory describes the understanding, detection, and management of emotions as a significant aspect of human intelligence. According to this theory, emotional intelligence shapes the ability to manage and use emotions in relationships. Hence, the capabilities of emotional intelligence interplay and complement each other, and the development of these capabilities may contribute to improvements in both personal and professional life.

Petrides and Furnham (2003) also worked on emotional intelligence and developed their own concept. Accordingly, the ability of emotional intelligence comprises the following components:

understanding emotions (the ability to recognize, interpret, and understand one's own and other's emotions), using emotions (the ability to effectively use one's emotions to support cognitive functions, solve problems, make decisions, and achieve goals), regulating emotions (the ability to effectively manage one's emotions, mainly to control and express them in appropriate situations), and emotional awareness (the ability to be aware of one's emotions and emotional state at a particular moment in time). Martins et al. (2010) also made a substantial contribution to the study and development of emotional intelligence abilities, particularly examining emotional intelligence through the ability to contribute to better psychological and physical health. In Lopes et al.'s (2005) approach to perceiving emotional intelligence, the development of abilities plays a significant role. Thus, emotional intelligence can be developed through active learning and training of certain skills. Additionally, emotional intelligence assists in the development of social communications.

Daus and Ashkanasy (2005), Joseph and Newman (2010), Newman et al. (2010) claim that emotional intelligence specifically assists in improving work outcomes. Palmer et al. (2008) discussed the ability to manage one's emotions and those of others. Bradberry and Greaves (2009) focused on developing emotional intelligence abilities. They provide practical information and strategies for enhancing emotional intelligence. Specifically, emotional intelligence develops the ability to identify and understand one's emotions and the emotions of others and, using this competency, to manage behavior and relationships.

Bar-On (2000) has contributed significantly to understanding and measuring emotional intelligence. He developed a model of emotional intelligence abilities and concluded that emotional intelligence shapes the ability to respond to environmental pressure effectively.

It should be noted that digitization, strengthening of democratic processes, transparency of political

decisions, and reforms in the field of economy and education contributed to increasing scientists' interest in studying human capital and emotional perception (Podolchak et al., 2021). An individual's success in work largely depends on the mastery of emotions. At the same time, little attention was paid to the development of emotional intelligence and the consequences of its underdevelopment, the structure of emotional intelligence, the determination of its specificity compared with other forms of intelligence, and the relationship between the level of emotional intelligence and the style of behavior in conflict. Despite a significant number of publications that revealed the essence, components, and approaches to developing emotional intelligence, many tasks need to be solved precisely in a manager's emotional intelligence. In particular, there is a need to research the role of a manager's emotional intelligence for enterprise (institution, organization) performance, clearly define its component and methodological approaches, and study the mutual influence of a manager's emotional intelligence on collective emotional intelligence.

Furthermore, there remain several issues in determining the tools, methods, and techniques for developing managers' emotional intelligence, with insufficient attention paid to emotional competence, which could lead to an increase in organizational capital. From the 2010s, researchers have been working in the direction of studying this ability. For example, Dincer and Orchan (2012), O'Boyle et al. (2011) focused on the concept of promoting the development, discovery, and implementation of new ideas at work. Zeidner and Hadar (2014) and Dubovyk and Drapchuk (2014) assert that emotional intelligence contributes to the acceptance of one's feelings and the feelings of another person, lifting bans on expressing feelings and acknowledging the right to feel as a systemic and functional characterization of the personality, ensuring its social success and personal factors. Mayer et al. (2016), Hogan et al. (2010), Lytle (2015), and Steiner (2013) argue that emotional intelligence allows managing the emotional sphere based on intellectual analysis and synthesis of one's attitude toward the external world, which is based on emotions.

Emotional intelligence is an integral property of an individual. It comprises four components: dispositional, interpersonal, intrapersonal, and in-

formation-processing (Chetveryk-Burchak, 2015). Emotional intelligence has a cognitive, emotional, and personal nature, and empathy is one of the main mechanisms of its development. Kozlova (2019) began to consider emotional intelligence (EQ) together with non-verbal intellectual development (IQ) and concluded that IQ and EQ are an integral part of each other.

However, no single approach has been developed that would consider all the features of the emotional intelligence of personnel working in organizations of both public and private ownership. At the current stage of research on emotional intelligence, scientists have developed and improved several models of emotional intelligence, which are included in the appropriate methods. The main ones are:

- model of emotional-intellectual abilities (Mayer et al., 2016);
- model of emotional competence (Goleman, 2000);
- non-cognitive model of emotional intelligence (Bar-On, 2000);
- the scale of emotional intelligence, which is divided into sub-models: a model of traits, mixed models, and models of abilities (Krishnan et al., 2020).

According to Jan and Anwar (2019), Malik (2022), and Podolchak et al. (2022), emotional intelligence affects individual and organizational productivity and is a critical and decisive factor in measuring individual and organizational effectiveness. However, the degree of this influence needs to be identified.

Abanina and Antonets (2019) substantiate the concept of emotional intelligence as a factor of effective communication in business organizations and public administration. However, the relationship between the components of emotional intelligence, its assessment methods, and the development of this field has not been established.

Barnard and Nel (2015), Bellamy et al. (2005), and Chapman-Clarke (2017) studied the conditions and

prerequisites affecting the development of emotional intelligence. Esnaola et al. (2016), Gavilanez et al. (2019), and Hayashi and Ewert (2013) considered the components of emotional intelligence. Nisha and Sophia (2017) and Pat McEnrue et al. (2009) studied models of emotional intelligence and approaches to their construction. Ristea et al. (2016) and Shanta and Gargiulo (2014) proposed new methods of emotional intelligence research based on existing ones. However, the versatile direction of emotional intelligence research remains relevant and is not fully studied. There must be thorough research comparing the theoretical, methodological, and applied principles of the most popular methods of assessing emotional intelligence and their application areas. As a result, there are difficulties associated with measuring the level of its development and, accordingly, a large number of approaches and methods.

Currently, research into emotional intelligence and its impact on the level of mental health of people and their career development is ongoing. However, there still needs to be a well-founded single universal method for determining the level of emotional intelligence, which requires minimal adaptation in the conditions of any country and can be applied to the personnel of organizations of various forms of ownership. Therefore, the purpose of this study is to compare the methodological approaches in the most common tests for determining emotional intelligence, establish their advantages and disadvantages, and choose a universal test for determining the emotional intelligence of civil servants in Ukraine.

Considering the active reform of public administration in Ukraine as a developing country, the introduction of emotional intelligence assessment in the HR system of public authorities and the selection of an adequate method for assessing their personnel's emotional intelligence level is particularly relevant. This will make it possible to reasonably draw up plans for developing personnel in public administration and to use modern methods to increase efficiency.

2. METHOD

This study selects the most common methods for assessing emotional intelligence in business and public administrations for developed and developing countries with deductive and inductive analyses. In addition,

main methodological advantages, differences, and spheres of application are also established. Using analysis and synthesis, a model of the relationship between the two most common methods of assessing emotional intelligence – MSCEIT and Hall – is built. This made it possible to establish the relationship between the elements of emotional intelligence, which are determined in the general determination of its level.

The study surveyed officials of local governments from western, northern, and central regions of Ukraine and representatives of businesses in these regions, particularly managers of private enterprises. The total sample is 100 respondents. The sample size is caused by the technical possibilities of testing and processing the results. Since geographically all territories of Ukraine are represented in the sample, the results can be generalized for the entire country, not only for one of its regions. Testing was conducted online using Google Forms. During this testing, the time spent on each test was recorded separately. After the testing, a written anonymous survey was conducted regarding which test for determining emotional intelligence the respondent would choose if given such an opportunity. Statistical analysis methods of Excel are used to process the survey results, and scientific synthesis methods are used to formulate the conclusions.

The Hall method consists of 30 questions, which are divided into five groups of questions that determine the levels of such components of emotional intelligence as emotional awareness, managing one's emotions, managing the emotions of others, empathy, and self-motivation. The overall level of emotional intelligence is determined by summing up the number of points by answering the questions. The level of emotional intelligence can be low (up to 39 points), average (40-69 points), or high (more than 70 points).

The MSCEIT method evaluates the answers to 141 questions, which concerned the assessment of photographs, images or representations of situations or the assessment of statements and stories, of which 35 are emotion perception (scales A and E); 33 – understanding of thoughts (scales B and F); 34 – understanding of emotions (scales C and G); 39 – emotion management (scales D and H). The level of emotional intelligence is also determined by summing up the answers.

3. RESULTS AND DISCUSSION

Public managers' successful performance of the assigned tasks determines the country's development. Since emotional intelligence is much more critical than the coefficient of mental development for the adequate performance of assigned tasks, and there are many methods for its determination, it is advisable to choose the optimal method for determining the level of public managers' emotional intelligence. It should be adequate, easy to interpret, and be accepted in public administration. It is imperative to use it continuously in public administration to create recommendations for staff's professional and personal development.

The study conducted a detailed retrospective analysis of publications from 1998 to 2021 inclusive in scientometric databases (Google Scholar, Scopus, and Web of Science). It was established that the primary attention of scientists is the development of the theoretical basis of evaluation methods. In particular, 30% of all articles are devoted to analyzing the results of practical assessment of the level of emotional intelligence using various methods.

In 2021, Google Scholar became the most common for researching EQ-i, ESCI, and MSCEIT methods. In Scopus, in 2021, MSCEIT, TEIQue, and STEM were the most common research methods. In Web of Science, the most common methods used and improved to determine emotional

intelligence were SREIT, TEIQue, and EQ-i. The Bradbury method is the least popular method to study.

The analysis of changes in quantitative indicators of publication activity from 2019 to 2021 regarding the use, study, and improvement of these methods showed that:

- The MSCEIT method is becoming increasingly popular due to its high accuracy and adequacy.
- A modulated sinusoidal type of publishing activity characterizes Hall method of research interests. This difference is due to a change in the priorities of scientists regarding the publication in scientometric databases. The general tendency to reduce publication activity is likely due to a glut of publications and research in this area in 2020.
- The EQ-i, ESCI, TEIQue, STEM, and SREIT methods have attracted interest from scientists from 2019 to 2021.

According to the results of this analysis, nine methods of assessing emotional intelligence were selected, which are found most often. Accordingly, Figure 1 shows the prevalence of these methods in developed and developing countries, where methods for measuring emotional intelligence are ac-

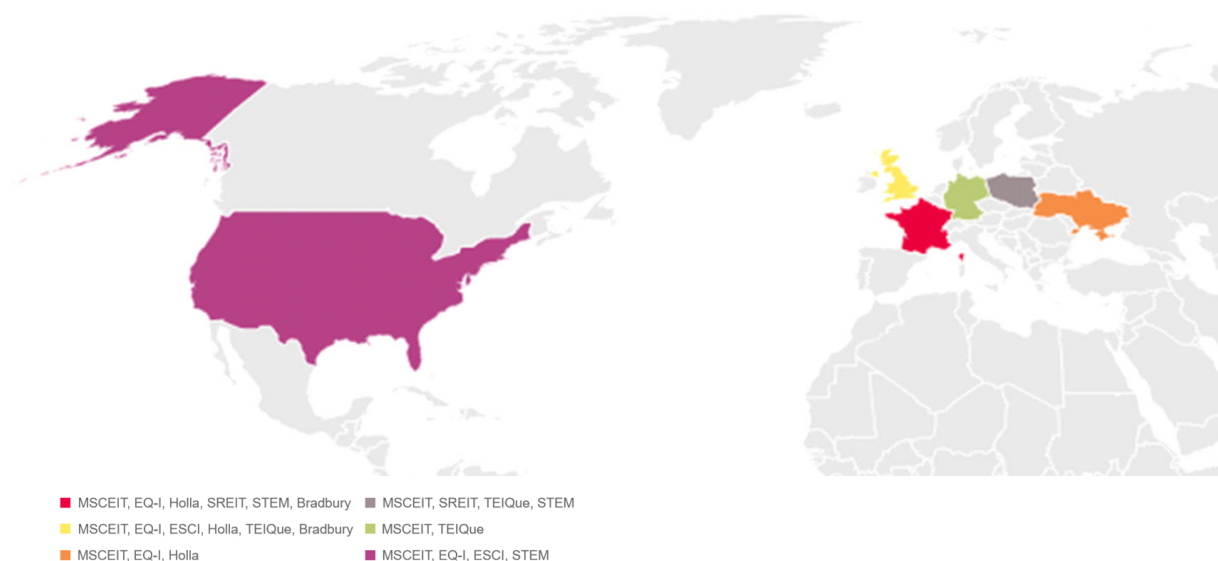


Figure 1. Prevalence of methods of assessing emotional intelligence in developed and developing countries

tively used in practice (Malik, 2022; Jan & Anwar, 2019; Abanina & Antonets, 2019).

The only method of assessing emotional intelligence – the MSCEIT test – is used in all developed countries and Ukraine. Hall test is used in France, the UK, and Ukraine. The EQ-i test is also used in developed and developing countries (France, the UK, the USA, and Ukraine) to assess the emotional intelligence of business and public administration personnel. STEM testing is standard only in developed countries – Poland, France, the USA, and TEIQue – in Poland, Germany, and the UK. SREIT tests are used only in Poland and France, and Bradbury – in France and the UK. The ESCI method is only used in the UK and USA. Such a distribution is due to the specifics of tests, the level of development of science, in particular the interest of scientists in a particular technique and its adaptation, the peculiarities of the mentality of the inhabitants of countries and managers that di-

rectly affect the choice of the direction of personnel development.

Table 1 shows that the MSCEIT test, out of all eight analyzed techniques, is second in its volume only to the TEIQue test. Further in descending order are EQ-i, ESCI, STEM, SREIT, Hall, and Bradberry tests. Each of these tests uses different methods for assessing the perception, regulation, and use of emotions. However, the results still assess the level of emotional intelligence. Therefore, these methods can be compared despite the different approaches to assessing emotional intelligence. In order to single out a universal method, a comparison of nine selected methods was carried out according to several characteristics.

The interest of scientists in the EQ-i method is growing. It is actively used for the same purposes in developing countries (France, the UK, and the USA). Compared in general comparison,

Table 1. Comparison of the most common methods of assessing emotional intelligence

Test	Short description	Evaluation method			Scope (business or public administration)
		Perception emotions	Regulation emotions	Using emotions	
MSCEIT	141 questions regarding the assessment of a photograph, picture or representation of a situation or assessment of statements and stories, of which 35 are Perceiving emotions (scale A, E); 33 Facilitating thought (scale B, F); 34 Understanding emotions (scale C, G); 39 Managing emotions (scale D, H).	Experientially-based verbal and non-verbal appraisal of emotions describes the ability to perceive information that affects emotions and relate it to the sensory domains to support cognitive processes with the impressions received. Emotion perception includes equal tasks, "faces" and "images."	Emotion regulation is recorded by the levels of the task "Coping with own emotions" and "Emotions in relationships."	The use of emotions is captured by the task levels "support" and "sensory impressions." The facet of knowledge about emotions is presented in the form of the levels of the task "Changes" and "Complex emotions."	Business, governance
EQ-i	133 questions, 15 scales, and 5 final indicators (self-perception, interpersonal perception, stress management, adaptability, general mood).	Ability to control mood, emotions and recognize and understand drivers and their impact on being able to understand others.	The ability to control or transform negative impulses and moods, as well as a personal tendency not to do so judge hastily, but think first and act later.	Social awareness – the ability to understand how other people feel and how their words and actions affect others (empathy). The ability to understand other people, what motivates them, how they work, and how best to work with them.	Business, governance
ESCI	72 questions (four groups of questions diagnosed by these surveys: self-perception, self-management, social perception, and social skills).	Self-analysis and external analysis to establish emotional and social self-awareness.	Performance orientation, adaptability, emotional self-control, optimism.	Empathy, organizational understanding, conflict management, coaching and mentoring, visionary leadership, teamwork.	Business, governance

Table 1 (cont.). Comparison of the most common methods of assessing emotional intelligence

Test	Short description	Evaluation method			Scope (business or public administration)
		Perception emotions	Regulation emotions	Using emotions	
Hall	30 questions (5 groups of questions diagnosed by this survey: emotional awareness, managing one's emotions, managing the emotions of others, empathy, self-motivation).	Proposed scales for determining emotional awareness, self-motivation (controlling one's behavior using emotion management).	Performance orientation, adaptability, emotional self-control, optimism. Managing emotions is an emotional openness, emotional flexibility, or arbitrary management of emotions.	Empathy (understanding of other people's emotions) is the ability to empathize with the current emotional state of another person, as well as the willingness to provide support. This is the ability to understand a person's state by facial expressions, gestures, shades of speech, and posture. Recognizing other people's emotions is the ability to influence the emotional state of others.	Business, governance
SREIT	33 statements divided into three scales: 1) evaluation and expression of emotions; 2) regulation of emotions; 3) using emotions when solving problems. The questionnaire shows good psychometric indicators: internal reliability, test-retest reliability, and actual discriminant validity. It is built on the early Mayer and Salovey model.	It is used for self-analysis in terms of optimism/mood regulation = regulation of emotions in oneself, evaluation of emotions = perception of emotions in oneself.	Social skills = regulation of emotions in others.	Using emotions = using emotions strategically.	Business, governance
TEIQue	153 items and 13 components, combined into 4 factors: well-being, self-control, emotionality, sociability.	It takes into account the "Emotional" factor.	It takes into account the "Self-control" factor.	It takes into account the "Communicability" factor.	Business, governance
STEM	44 questions.	Measuring people's ability to cope with stressful events.	The ability to regulate negative emotions and enhance positive emotions.	Emotional management (i.e., a branch of regulating emotion), which is developed based on the situational judgment test paradigm.	Business, governance
Bradbury (Emotional Intelligence Appraisal)	28 questions Self-awareness (6 questions) Self-management (9 questions) Social awareness (5 questions) Relationship management (8 questions).	Emotional intelligence means being self-aware, managing yourself well, reading the emotions of others, and communicating with others.	Managing yourself means finding a balance between the logical and emotional sides.	The combination of body language and speech to achieve the necessary goals.	Business, governance

MSCEIT has 7% fewer questions and is long-lasting. The ESCI test is less popular than the EQ-i test and used in the USA and UK solely to assess the emotional intelligence of business representatives. Compared to the test, MSCEIT has 49% fewer questions. Even less popular is the TEIQue test, but the interest of scientists is constantly growing. Compared to the test, MSCEIT has 7% more questions. It is used in Poland, Germany, and the UK

to assess the emotional intelligence of civil servants and business professionals. Compared to the TEIQue method, the STEM method is usually omitted by scientists and is actively used for the same purposes in Poland, France, and the USA.

The SREIT method is gaining popularity and is used to assess the emotional intelligence of civil servants and business workers in Poland and

France. The Bradbury method is the least popular method to study among scientists. It assesses the emotional intelligence of civil servants and business workers in France and the UK. It is the least voluminous but the least accurate test of all mentioned above.

Table 2 shows the advantages and disadvantages established as a result of tests comparison for determining emotional intelligence (MSCEIT, EQ-i, ESCI, STEM, SREIT, Hall, and Bradberry).

Although each of these tests to determine emotional intelligence (MSCEIT, EQ-i, ESCI, Hall, STEM, SREIT, and Bradberry) has its own unique advantages and disadvantages, several common disadvantages can affect their result:

1. Subjectivity – tests based on self-assessment risk obtaining incorrect results because this assessment method can lead to overestimation or underestimation of the emotional intelligence level.
2. Socially desirable response – people usually try to present themselves in a better light when taking tests, which can affect the accuracy of the results.

3. Insufficient cultural adaptation (MSCEIT) – some tests are less effective in different cultural contexts and may require adaptation.
4. Time and resources – some tests are time-consuming and require significant resources to administer and interpret.
5. Limited diagnostic utility – some critics argue that emotional intelligence tests are not always helpful in predicting occupational success or personality characteristics, mainly when used alone.

Based on a comparative qualitative analysis of approaches to determining the level of emotional intelligence and the prevalence of methods in developed and developing countries, two tests were chosen for a more detailed investigation of the underlying advantages and disadvantages: MSCEIT and Hall. According to the MSCEIT test, four components of emotional intelligence are identified on eight scales and 141 questions regarding the assessment of a photo, picture, or representation of a situation or assessment of statements and stories. In particular, it has perceiving emotions (scale A, E), facilitating thought (scale B, F), understanding emotions (scale C, G), and manag-

Table 2. Advantages and disadvantages of tests for determining emotional intelligence

Test	Advantages	Disadvantages
MSCEIT	It is based on Mayer and Salovey’s scientifically based emotional intelligence theory. It measures four domains of emotional intelligence: perceiving, using, understanding, and managing emotions.	A rather complex test that takes much time. Results may depend on cultural and educational factors.
EQ-i	It is widely used and well-studied. It assesses five significant areas of emotional intelligence.	A socially desirable response may influence the obtained results. Requires professional intervention to interpret results.
ESCI	It measures emotional and social competencies that are important for leadership and job success.	It is a 360-degree assessment, so it requires feedback from other people. It requires professional intervention to interpret results.
Hall	It is easy to use and interpret. It is fast, it usually takes less than 10 minutes.	A socially desirable response may influence the obtained results.
SREIT	It is short and easy to use.	A socially desirable response may influence the obtained results.
STEM	It is easy to use and interpret. It is fast, it usually takes less than 10 minutes.	A socially desirable response may influence the obtained results. It is short and incomplete to cover all aspects of emotional intelligence.
Bradberry	It is easy to use and interpret. It is fast, it usually takes less than 10 minutes.	A socially desirable response may influence the obtained results. It is short and incomplete to cover all aspects of emotional intelligence.

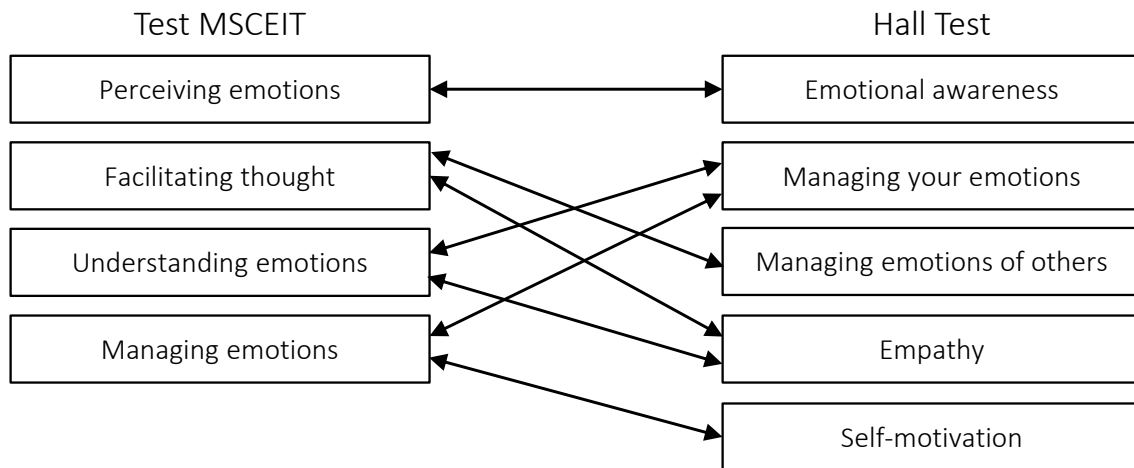


Figure 2. Schematic comparison of MSCEIT and Hall tests the most time-consuming and the least time-consuming among all tests for determining emotional intelligence

ing emotions (scale D, H). According to Hall test, five components of emotional intelligence are determined on five scales of 30 questions (Table 1): emotional awareness, managing your emotions, managing the emotions of others, empathy, and self-motivation. Figure 2 schematically shows their comparison.

Next, it is necessary to compare the two tests to determine the common and different components in the general emotional intelligence level assessment. The paper sought to understand whether these tests can be used interchangeably. Thus, it was established that by semantic content, these scales correlate with each other as follows:

- perceiving emotion completely correlates with emotion awareness;
- facilitating thoughts correlates partly with managing emotions of others (by 30%) and partly with empathy (by 70%);
- understanding emotion correlates partly with managing emotions (by 70%) and partly with empathy (by 30%);
- managing emotion correlates partly with managing emotions (by 60%) and partly with self-motivation (by 40%).

The significant difference between them is the test duration: the Hall test takes up to 10 minutes, and the MSCEIT takes up to 45 minutes. The methods

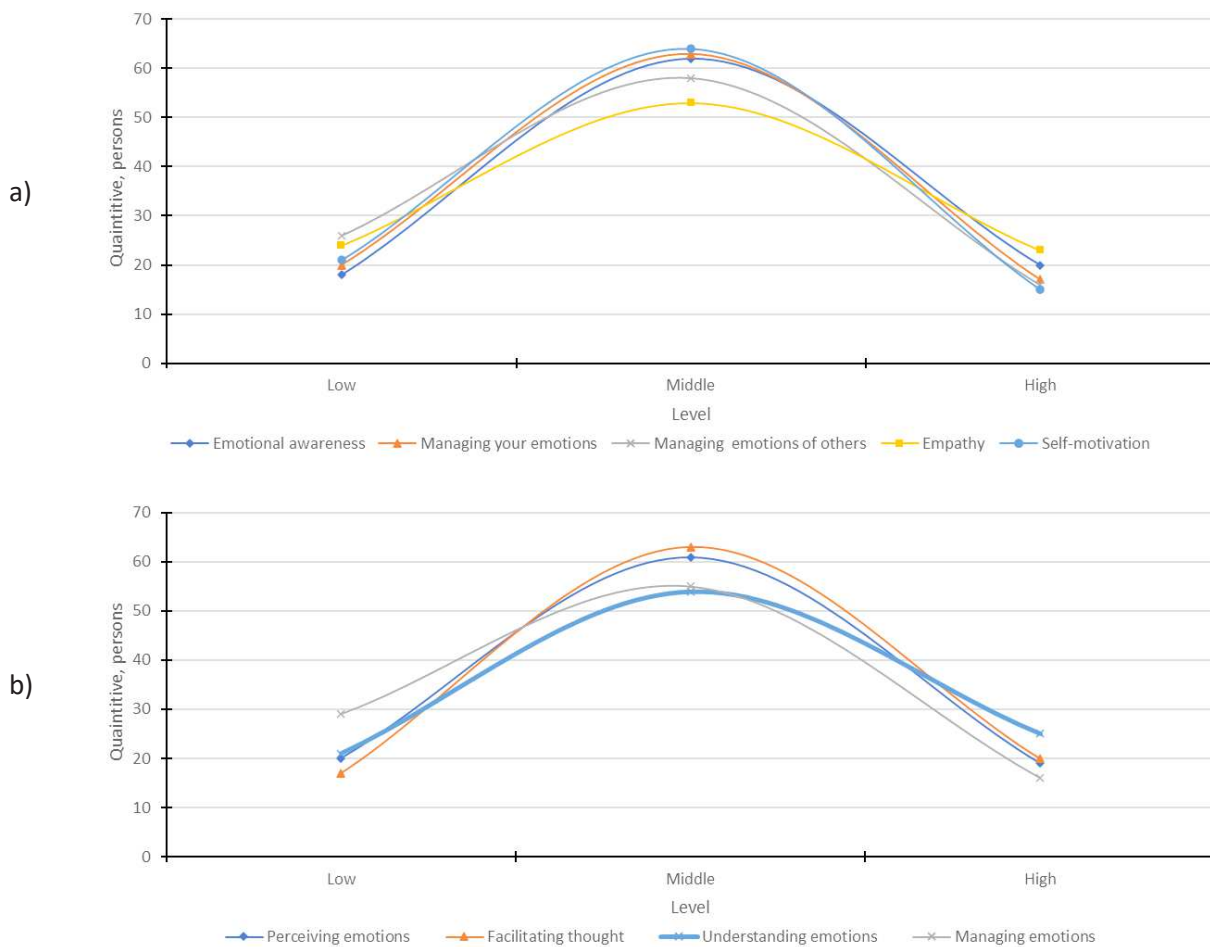
of evaluating the results are also different. In the MSCEIT test, it is difficult to “adjust” the result to the expected one; in the Hall test, it is pretty easy. It should be noted that both tests are used in Ukraine to assess emotional intelligence and business and public administration staff.

Table 3 shows the correlation results of Hall tests and MSCEIT V2.0, calculated as the average value for all indicators. It should be noted that the error was within the permissible limits and was 0.005 for the MSCEIT V2.0 test and 0.004 for the Hall test.

Thus, the tests can be interchangeable (Figure 3, Table 3). According to the results of a survey conducted in Google Forms, it was established that after passing both tests, when giving a choice to 100 people regarding the question of which test to take, a significant advantage (80%) is given to the Hall test. Evaluation of the general level of emotional intelligence is obtained by summing the results of the answers. On average, it takes up to 10 minutes to pass the test. It is a self-assessment tool, the effectiveness of which could be better for civil servants.

Table 3. Averaged correlation of the Hall and MSCEIT V2.0 tests

Test	Low level of emotional intelligence	Average level of emotional intelligence	High level of emotional intelligence
Hall	22	60	19
MSCEIT	22	58	20



Note: * The results obtained in a sample of 100 people.

Figure 3. The results of the determination of the level of emotional intelligence according to both the Hall test (a) and the Mayer, Salovey, Caruso test (b)*

According to Figure 3, most people show average indicators of emotional intelligence components. In Hall emotion awareness test, the average level is 62 people, and according to the MSCEIT test, perceiving emotion – 61 people. In Hall test for managing emotions of others, the average level is 58 people, and for empathy – 53 people; in the MSCEIT test for facilitating thought – 63 people. In Hall managing your emotion test, the average level is 63 people, and for empathy – 53 people; in the MSCEIT test for emotion understanding – 54 people. In Hall managing your emotion test, the average level is 63 people and self-motivation – 63 people; in the MSCEIT test, according to the managing emotion component, – 55 people.

Table 3 shows that the results of the average level of correlation between the two tests in assessing the low level of emotional intelligence are entire-

ly the same. When assessing the average level of emotional intelligence, the difference in the results obtained was 3%, and when assessing a high level of emotional intelligence – 5%. Thus, the average error was 2.7%, a permissible value. In addition, the time spent by respondents to pass the Hall test was four times less than when passing the MSCEIT test. Therefore, it can be concluded that a Hall test should be chosen as a universal quick test to determine the level of emotional intelligence.

4. DISCUSSION

The results show that the MSCEIT method is becoming increasingly popular due to its high accuracy and adequacy. In addition, it is the only method in the world used in all countries chosen for comparison to assess the emotional intelligence

of civil servants and business workers. However, it has a significant drawback – it requires adaptation for each country and takes up too much time to pass. Hall method is somewhat less popular, and scientific interest in using it varies by modulated sinusoidal type. The number of questions in this method is less than four times, and the scales are more than one. It is used in Ukraine, France, and the UK to assess the emotional intelligence of civil servants and business workers.

After conducting a comparative analysis of the methods, it was determined that the Hall method has more advantages when assessing the level of emotional intelligence, as it is short-term (takes up to 10 minutes) and eliminates the possibility of adjusting the obtained results since an expert on the appropriate scales carries out the assessment. Of course, as in any test, it is not excluded that the results obtained are incorrect due to the possibility of giving false answers to the questions. However, for the sake of the civil servants themselves, the study assumes that all answers are given with 100% accuracy. After all, the emotional intelligence level assessment is carried out to draw

up a plan for its development and, as a result, increase the efficiency of work and expand the career opportunities of civil servants.

At the same time, less than half of business and public administration managers understand the importance of determining emotional intelligence and the need for targeted activities regarding its development. However, there is a positive trend in this direction. As a result of the civil service reform and the revision of approaches to doing business, more and more managers understand the importance of developing the emotional intelligence of staff (Sumets et al., 2021). Accordingly, training on working on this problem is actively introduced both in business and the civil service. The offer of topics in this direction is significantly expanded.

Future research may assess the possibility of creating an HR system in which, along with traditional components, there will be an assessment and development of the emotional intelligence level as one of the determining factors for the success of the assigned tasks.

CONCLUSION

The purpose of this study was to compare the methodological approaches in the most common tests for determining emotional intelligence, establish their advantages and disadvantages, and choose a universal test for assessing the emotional intelligence of civil servants of Ukraine. The most common methods of assessing the emotional intelligence level in business and public administration used in developed countries and Ukraine are MSCEIT, SREIT, EQ-i, ESCI, Hall, TEIQue, STEM, and Bradbury. A common shortcoming of tests based on self-assessment is that they may not reflect the actual state of affairs.

The results show that the best and fastest method of assessing the emotional intelligence of the personnel in the field of business and public administration in Ukraine is the Hall method because it has the most advantages. Compared to the MSCEIT test, the time spent on its passage is four times less, and the error is 0.004. When given a choice between passing the Hall test and the MSCEIT test, 80% of respondents from a sample of 100 civil servants and business representatives have chosen it. The correlation of Hall test results with the MSCEIT test is 97.3%. This proves the possibility of its application to assess the level of emotional intelligence of civil servants and business workers.

AUTHOR CONTRIBUTIONS

Conceptualization: Nazar Podolchak, Natalia Tsygylyk, Mariia Vesolovska.

Data curation: Mariia Vesolovska.

Formal analysis: Olena Bilyk.

Funding acquisition: Nazar Podolchak.

Investigation: Veronika Karkovska, Mariia Vesolovska.

Methodology: Mariia Vesolovska.

Project administration: Mariia Vesolovska.

Resources: Mariia Vesolovska.

Software: Natalia Tsygylyk.

Supervision: Olena Bilyk, Natalia Tsygylyk.

Validation: Veronika Karkovska.

Visualization: Natalia Tsygylyk.

Writing – original draft: Natalia Tsygylyk, Mariia Vesolovska.

Writing – review & editing: Nazar Podolchak, Olena Bilyk, Veronika Karkovska.

REFERENCES

1. Abanina, H. V., & Antone-
ts, S. A. (2019). Emotional
intelligence as a factor of effective
communication in business
organizations. *Orhanizatsiina
Psykhohohiia. Ekonomichna
Psykhohohiia – Organizational
Psychology. Economic Psychology*,
4(18), 7-13. [http://dx.doi.
org/10.31108/2.2019.4.18.1](http://dx.doi.org/10.31108/2.2019.4.18.1)
2. Barnard, A., & Nel, E. (2015).
Personality type: Optimizing
the development of emotional
intelligence. *Problems and
Perspectives in Management*, 13(4),
115-123. Retrieved from [https://
www.businessperspectives.org/
index.php/journals/problems-
and-perspectives-in-management/
issue-48/personality-type-
optimizing-the-development-of-
emotional-intelligence](https://www.businessperspectives.org/index.php/journals/problems-and-perspectives-in-management/issue-48/personality-type-optimizing-the-development-of-emotional-intelligence)
3. Bar-On, R. (1997). *Emotional
quotient inventory*. Toronto: Multi-
Health Systems.
4. Bar-On, R. (2000). Emotional and
social intelligence: Insights from
the emotional quotient inventory.
In R. Bar-On & J. D. A. Parker
(Eds.), *The handbook of emotional
intelligence: Theory, development,
assessment, and application at
home, school, and in the workplace*
(pp. 363-388). Jossey-Bass/Wiley.
Retrieved from [https://psycnet.
apa.org/record/2001-00355-018](https://psycnet.apa.org/record/2001-00355-018)
5. Bellamy, A., Gore, D., & Sturgis, J.
(2005). Examining the relevance
of emotional intelligence within
educational programs for the
gifted and talented. *Electronic
Journal of Research in Educational
Psychology*, 3(2), 53-78. Retrieved
from [https://www.redalyc.org/
pdf/2931/293121927003.pdf](https://www.redalyc.org/pdf/2931/293121927003.pdf)
6. Bradberry, T., & Greaves, J.
(2009). *Emotional intelligence 2.0*.
TalentSmart.
7. Buck, R. (1991). Motivation:
Emotion and cognition. A
developmental-interactionist
view. In K. N. Strogman (Ed.),
*International Review of Studies on
Emotion*. Chichester: Wiley.
8. Chapman-Clarke, M. (2017). Why
mindfulness at work matters – The
'reboot' for emotional intelligence
development. *Development and
Learning in Organizations*, 31(2),
1-4. [https://doi.org/10.1108/DLO-
10-2016-0097](https://doi.org/10.1108/DLO-10-2016-0097)
9. Chetveryk-Burchak, A. (2015).
*Mechanisms of the influence of
emotional intelligence on life
success of personality*. Odesa:
South Ukrainian National
Pedagogical University named
after K. D. Ushinsky. (In
Ukrainian). Retrieved from
[http://dspace.pdpu.edu.ua/han-
dle/123456789/282](http://dspace.pdpu.edu.ua/handle/123456789/282)
10. Daus, C., & Ashkanasy, N. (2005).
The case for the ability-based
model of emotional intelligence in
organizational behavior. *Journal
of Organizational Behavior*, 26(4),
453-466. [https://doi.org/10.1002/
job.321](https://doi.org/10.1002/job.321)
11. Dincer, H., & Orhan, N. (2012).
Relationship between emotional
intelligence and innovative work
behaviors in Turkish banking
sector. *International Journal of
Finance & Banking Studies* (2147-
4486), 1(1), 21-28. [https://doi.
org/10.20525/ijfbs.v1i1.133](https://doi.org/10.20525/ijfbs.v1i1.133)
12. Dubovyk, S., & Drabchuk, T.
(2014). Rozvytok emotsiinoho
intelektu suchasnykh menedzheriv
yak umova yikh uspishnoi
diialnosti [Development of
emotional intelligence of
modern managers as the basis
of their successful activity].
*Visnyk Sums'koho Natsionalnoho
Ahrarnoho Universytetu. Seriya:
Ekonomika i Menedzhment –
Bulletin of Sumy National Agrarian
University. Series: Economics and
Management*, 5, 8-14. Retrieved
from [http://nbuv.gov.ua/UJRN/
Vsna_ekon_2014_5_4](http://nbuv.gov.ua/UJRN/Vsna_ekon_2014_5_4)
13. Esnaola, I., Freeman, J., Sarasa,
M., Fernández-Zabala, A., &
Axpe, A. (2016). Validity evidence
based on internal structure of
scores of the emotional quotient-
inventory: Youth version short
(EQ-i: YV-S) in a Spanish sample.
The Spanish Journal of Psychology,
19, E12. [http://dx.doi.org/10.1017/
sjp.2016.12](http://dx.doi.org/10.1017/sjp.2016.12)
14. Gavilanez, M., Alvarado, R., &
Yance, C. (2019). La mediación de
conflictos escolares. Incidencia
en el desarrollo de la intelligen-
cia emocional. *Revista Conrado*,
15(69), 399-404. (In Spanish).
Retrieved from [https://conrado.
ucf.edu/cu/index.php/conrado/
article/view/1091/1100](https://conrado.ucf.edu/cu/index.php/conrado/article/view/1091/1100)
15. Goleman, D. (2000). An EI-
based theory of performance.
In C. Cherniss & D. Goleman
(Eds.), *The emotionally intelligent
workplace: How to select for,
measure, and improve emotional
intelligence in individuals, groups,
and organizations*. San Francisco,
CA: John Wiley & Sons. Retrieved
from [https://www.eiconsortium.
org/reprints/ei_theory_perfor-
mance.html](https://www.eiconsortium.org/reprints/ei_theory_perfor-mance.html)

16. Goulman, D. (2008). *Emotional intelligence*. Bantam.
17. Hayashi, A., & Ewert, A. (2013). Development of emotional intelligence through an outdoor leadership program. *Journal of Outdoor Recreation Education and Leadership*, 5(1), 3-17. <https://doi.org/10.7768/1948-5123.1139>
18. Hogan, M., Parker, J., Wiener, J., Watters, C., Wood, L., & Oke, A. (2010). Academic success in adolescence: Relationships among verbal IQ, social support and emotional intelligence. *Australian Journal of Psychology*, 62(1), 30-41. <https://doi.org/10.1080/00049530903312881>
19. Jaeger, A. (2003). Job competencies and the curriculum: An inquiry into emotional intelligence in graduate professional education. *Research in Higher Education*, 44, 615-639. <https://doi.org/10.1023/A:1026119724265>
20. Jan, S., & Anwar, M. (2019). Emotional intelligence, library use and academic achievement of university students. *Journal of the Australian Library and Information Association*, 68(1), 38-55. <https://doi.org/10.1080/24750158.2019.1572482>
21. Joseph, D., & Newman, D. (2010). Emotional intelligence: An integrative meta-analysis and cascading model. *Journal of Applied Psychology*, 95(1), 54-78. <https://doi.org/10.1037/a0017286>
22. Kozlova, V. (2019). *Tekhnolohiia EQ-BOOST. Yak vykorystovuvaty emotsiyni intelekt u biznesi ta zhytti [EQ-BOOST technology. How to use emotional intelligence in business and life]*. Lviv, Ukraine: Vydavnytstvo Staroho Leva. (In Ukrainian).
23. Krishnan, H., Awang, S., Zakuan, N., & Nor, K. (2020). Bibliometric analysis on emotional intelligence research. *International Journal of Recent Technology and Engineering*, 8(6), 864-877. <https://doi.org/10.35940/ijrte.F7165.038620>
24. Lopes, P., Salovey, P., Côté, S., Beers, M., & Petty, R. E. (Ed.). (2005). Emotion regulation abilities and the quality of social interaction. *Emotion*, 5(1), 113-118. <https://doi.org/10.1037/1528-3542.5.1.113>
25. Lytle, T. (2015, July 13). *How to resolve workplace conflicts. Conflict in the workplace is not always a bad thing. But ignoring it can be*. HR Magazine. Retrieved from <https://www.shrm.org/hr-today/news/hr-magazine/pages/070815-conflict-management.aspx>
26. Malik, S. (2022). Emotional intelligence and innovative work behaviour in knowledge-intensive organizations: How tacit knowledge sharing acts as a mediator? *VINE Journal of Information and Knowledge Management Systems*, 52(5), 650-669. <https://doi.org/10.1108/VJKMS-09-2020-0158>
27. Marquez, P., Martin, R., & Brackett, M. (2006). Relating emotional intelligence to social competence and academic achievement in high school students. *Psicothema*, 18, 118-123. Retrieved from <https://www.redalyc.org/pdf/727/72709518.pdf>
28. Martins, A., Ramalho, N., & Morin, E. (2010). A comprehensive metaanalysis of the relationship between emotional intelligence and health. *Personality and Individual Differences*, 49(6), 554-564. <https://doi.org/10.1016/j.paid.2010.05.029>
29. Mayer, J. (1993). The intelligence of emotional intelligence. *Intelligence*, 17(4), 433-442. [http://dx.doi.org/10.1016/0160-2896\(93\)90010-3](http://dx.doi.org/10.1016/0160-2896(93)90010-3)
30. Mayer, J., Caruso, D., & Salovey, P. (2016). The ability model of emotional intelligence: Principles and updates. *Emotion Review*, 8(4), 290-300. <http://dx.doi.org/10.1177/1754073916639667>
31. Mayer, J., Salovey, P., Caruso, D., & Hee Yoo, S. (2012). The positive psychology of emotional intelligence. In S. J. Lopez & C. R. Snyder (Eds.), *The Oxford handbook of positive psychology* (pp. 159-171). Oxford Academic Press. <https://doi.org/10.1093/oxfordhb/9780195187243.013.0022>
32. Mayer, M., Di Paolo, M., & Salovey, P. (1990). Perceiving affective content in ambiguous visual stimuli: A component of emotional intelligence. *Journal of Personality Assessment*, 54(3-4), 772-781. <http://dx.doi.org/10.1080/00223891.1990.9674037>
33. Newman, D., Joseph, D., & MacCann, C. (2010). Emotional intelligence and job performance: The importance of emotion regulation and emotional labor context. *Industrial and Organizational Psychology*, 3(2), 159-164. <https://doi.org/10.1111/j.1754-9434.2010.01218.x>
34. Nisha, R., & Sophia, D. A. (2017). Parents role in nurturing emotional intelligence in children life – An approach towards development of emotional quotient. *International Journal of Economic Research*, 14(11), 151-158. Retrieved from <https://research.vit.ac.in/publication/parents-role-in-nurturing-emotional-intelligence-in-children-life>
35. O'Boyle, E., Humphrey, R., Pollack, J., Hawver, & Story, P. (2011). Emotional intelligence and job performance: A meta-analysis. *Journal of Organizational Behavior*, 32, 788-818. Retrieved from https://www.researchgate.net/publication/220013302_Emotional_intelligence_and_job_performance_A_meta-analysis
36. Palmer, B. R., Gignac, G., Ekermsans, G., & Stough, C. (2008). A comprehensive framework for emotional intelligence. In R. Emmerling, V. K. Shanwal, & M. K. Mandal (Eds.), *Emotional intelligence: Theoretical and cultural perspectives* (pp. 17-38). Retrieved from <https://research-repository.uwa.edu.au/en/publications/a-comprehensive-framework-for-emotional-intelligence>
37. Pat McEnrue, M., Groves, K. S., & Shen, W. (2009). Emotional intelligence development: Leveraging individual characteristics. *Journal of Management Development*, 28(2), 150-174. <https://doi.org/10.1108/02621710910932106>

38. Petrides, K., & Furnham, A. (2003). Trait emotional intelligence: Behavioural validation in two studies of emotion recognition and reactivity to mood induction. *European Journal of Personality*, 17(1), 39-57. <https://doi.org/10.1002/per.466>
39. Podolchak, N., Tsygylyk, N., & Dziurakh, Y. (2022). Building an effective personnel risks management system of the organization. *Eastern-European Journal of Enterprise Technologies*, 4(13-118), 44-52. <https://doi.org/10.15587/1729-4061.2022.262547>
40. Podolchak, N., Tsygylyk, N., & Khim, M. (2021). Use of the transfer of the best european technologies to implement the system for forming of civil servant-leader. *Eastern-European Journal of Enterprise Technologies*, 4(13-112), 78-88. <https://doi.org/10.15587/1729-4061.2021.239161>
41. Podolchak, N., Tsygylyk, N., Martyniuk, V., & Sokil, O. (2021). Predicting human resource losses due to the COVID-19 pandemic in the context of personnel security of organizations. *11th International Conference on Advanced Computer Information Technologies* (pp. 333-336). Deggendorf, Germany. <https://doi.org/10.1109/ACIT52158.2021.9548361>
42. Ristea, C., Macovei, S., & Leonte, N. (2016). The Influence of Motor Activities on the Development of Emotional Intelligence. In V. Grigore, M. Stanescu, & M. Paunescu (Eds.), *Physical Education, Sport and Kinetotherapy - ICPEK 2015, vol 11. European Proceedings of Social and Behavioural Sciences* (pp. 379-384). Future Academy. <https://doi.org/10.15405/epsbs.2016.06.52>
43. Schutte, N. S., Malouff, J. M., Thorsteinsson, E. B., Bhullar, N., & Rooke, S. E. (2007). A meta-analytic investigation of the relationship between emotional intelligence and health. *Personality and Individual Differences*, 42(6), 921-933. <https://doi.org/10.1016/j.paid.2006.09.003>
44. Shanta, L., & Gargiulo, L. A. (2014). Study of the influence of nursing education on development of emotional intelligence. *Journal of Professional Nursing*, 30(6), 511-520. <https://doi.org/10.1016/j.prof-nurs.2014.06.005>
45. Steiner, K. (2003). *Emotional literacy: Intelligence with a heart*. Personhood Press.
46. Sumets, A., Kniaz, S., Heorhiadi, N., Skrynkovskyy, R., & Martyniuk V. (2021). Methodical approach to the selection of options for ensuring competitiveness of enterprises in the system of development of agricultural clusters. *Agricultural and Resource Economics*, 7(1), 192-210. <https://doi.org/10.51599/are.2021.07.01.10>
47. Zeidner, M., & Hadar, D. (2014). Some individual difference predictors of professional well-being and satisfaction of health professionals. *Personality and Individual Differences*, 65, 91-95. <https://doi.org/10.1016/j.paid.2014.01.032>