

# Papéis Avulsos de Zoologia

## SEPSIS COSTALIS WIEDEMANN REDESCRIBED AND REFERRED TO RICHARDIIDAE (DIPTERA, ACALYPTRATAE)

GEORGE C. STEYSKAL

In the course of revisionary work on the family Megameriidae, it became necessary to determine whether Curran's statement in founding the genus *Sepsisia* on *Sepsis costalis* Wiedemann that that species is related to *Megamerina* is correct or not. I am greatly indebted to Leif Lyneborg, of the Universitetets Zoologiske Museum, Copenhagen, Denmark, for the opportunity of examining the type of Wiedemann's species. The fly turns out to be a species of the genus *Acompha* Hendel, of the family Richardiidae, and *Sepsisia* therefore is a new synonym of *Acompha*.

***Acompha costalis*** (Wiedemann), comb. n.

(Figures 1-3)

*Sepsis costalis* Wiedemann, 1830: 467.

*Sepsisia costalis* (Wiedemann); Curran, 1934: 437.

Redescription of holotype:

Female. Length of wing 4.2 mm. Piceous blackish, legs brownish black; antenna yellowish, a little brownish at tip; palpus yellowish; halter yellowish. Wing hyaline with dark brown costal border (Fig. 3).

Head as in Fig. 1; arista and bristles missing; U-shaped vertical area and oval ocellar area (stippled in figure) covered with fine whitish tomentum. Sockets of vertical bristles at the apex of low conical protrusions. Anterior orbits narrowly densely white tomentose. Ocelli in long narrow triangle, sockets of ocellar bristles close behind anterior ocellus and in transverse line with frontal bristles. Occiput nearly as broad above as below. Front gently arcuately narrowed anteriorly.

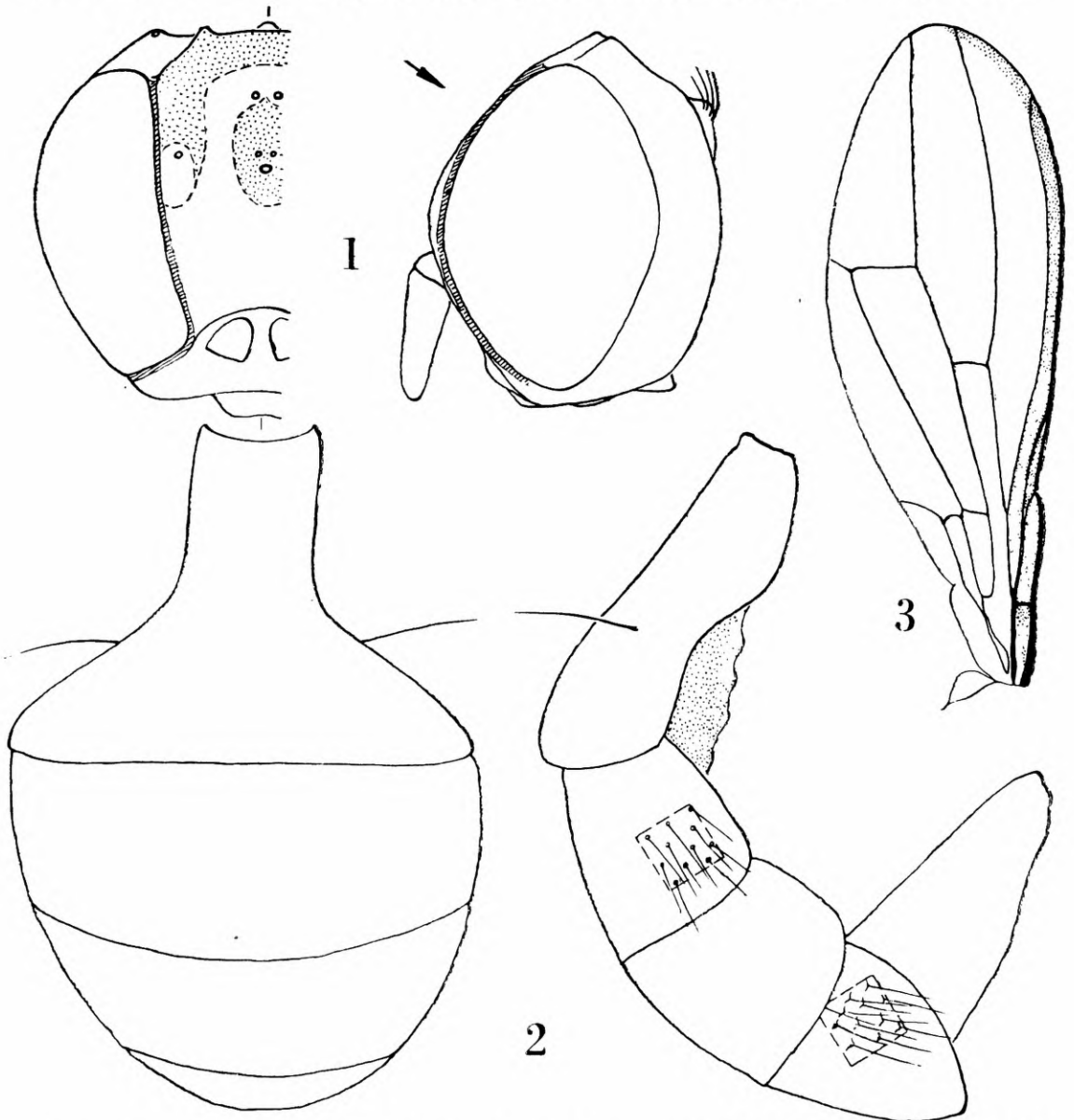
Thorax somewhat greasy, but moderate whitish tomentum and sparse dark hairs apparent on mesoscutum. A large pin has obliterated the region where dorsocentral bristles might be expected, but the following bristle sockets can be distinguished (only the anterior *ntpl* bristle of one side remains): 2 *ntpl*, 1 *sa*, 1 *pa*, 1 pair *sc*.

Legs of moderate length; all femora with ventral spinules ( $f_1$  with 1 anterior, 3 posterior, all near tip;  $f_2$  with 8 anterior, 3 posterior;  $f_3$  with 12 anterior, 10 posterior).

Wing as in Fig. 3, greatly narrowed basally, but small alula and squama evident; marginal cell much narrower than submarginal; 1st posterior cell a little narrowed apically; 1st vein ending well before mid-wing; anal vein attaining wing margin.

Abdomen as on Fig. 2; basal syntergum strongly petiolate, expanding apically to full width of abdomen; terga posterad of syntergum rather densely covered with longish white hairs that issue from raised sockets, which on apical segments are arranged in transverse rows (cf. figure).

The specimen is furnished with a red label with TYPE printed on it, and with 2 hand-written labels: Am. M./ Schom.; *Sepsis costalis* W. The original description states that it is "Aus Süda-



*Acompha costalis* (Wied.), fig. 1: head, profile and view of right half from direction of arrow; fig. 2: abdomen in dorsal and profile views, the latter with 2 areas showing vestiture; fig. 3: wing and squama, setation omitted.

merika", but no collector is cited. If "Schom." refers to either Robert H. Schomburgk or his brother Richard Schomburgk, the locality could not have been South America, since the rather extensive biographical data available concerning the Schomburgk brothers indicates that only Richard H. Schomburgk was in America before 1830, when *costalis* was described, and then in Richmond, Virginia, U. S. A., for a short time and in the Virgin Islands, Antilles, from the end of 1829 until mid-1834.

*Relationships.* *Acompha costalis* runs easily to the genus *Acompha* in Hendel (1911a, 1911b), but differs in a number of ways from the originally designated and until now sole species of the genus, *A. punctifrons* Hendel (1911a: 389), described from a single female specimen from Bolivia. When additional specimens of both species are obtained and better data concerning the chaetotaxy and other characters are available, it may be advisable to separate *A. costalis* generically from *A. punctifrons*, in which case the genus *Sepsisia* Curran would be available. At this time, the 2 species may be distinguished as follows.

#### Key to Species of *Acompha* Hendel

- Wing with basal half of costal cell, transverse band over fork of radius, basal crossvein, seam about *ta*, and spot at end of 3rd vein extending posterad to 4th vein, brown; front covered with fine white pruinosity spotted with bare areas at roots of fine hairs; chaetotaxy: 1 *h*, 1 *ntpl*, 1 "presutural", 3 *sa*, 1 *dc*, 2 pairs *sc*, 1 *mspl*, 1 *stpl* ..... *A. punctifrons* Hendel
- Wing hyaline, with only narrow brown costal border as far as end of 3rd vein; front glabrous medially, only upper parafrontal and ocellar areas (Fig. 1) with white tomentum; chaetotaxy: 0 *h*, 2 *ntpl*, ? *dc*, 1 *sa*, 1 *pa*, 1 pair *sc*, 0 *mspl*, 0 *stpl* .....  
..... *A. costalis* (Wiedemann)

Whether or not the male specimen from Guyana that Curran had before him when he erected the genus *Sepsisia* is conspecific with *A. costalis* is somewhat doubtful, inasmuch as Curran stated "anterior legs simple in male" and "3rd and 4th veins parallel apically". The specimen seems to be lost; the material of which it was a part was transferred recently from the New York Zoological Society to the American Museum of Natural History, but a search failed to reveal the specimen.

#### REFERENCES

CURRAN C. H.

1934. The Diptera of Kartabo, Bartica District, British Guiana. *Bull. Am. Mus. Nat. Hist.* 62: 287-532.

## HENDEL, F.

- 1911a. Die Arten der Dipteren-Subfamilie Richardiinae. *Deutsch. Ent. Zts.* 1911: 181-212, 239-270, 367-369. [The description of the genus *Acompha* appeared in the 1st part (11 March) and that of the species *A. punctifrons* in the last part (26 June).]
- 1911b. Diptera, Fam. Muscaridae. Subfam. Richardiinae. In P. Wytzman: *Genera Insectorum* 113: 1-56, pls. 1-3.

## WIEDEMANN, C. R. W.

1830. *Aussereuropäische zweiflügelige Insekten* 2:xii + 684 pp., pls. 7-10b. Hamm.