

2020

HMGB1 in Systemic Lupus Erythematosus

T. Liu

Zucker School of Medicine at Hofstra/Northwell

M. Son

Zucker School of Medicine at Hofstra/Northwell

B. Diamond

Zucker School of Medicine at Hofstra/Northwell

Follow this and additional works at: <https://academicworks.medicine.hofstra.edu/publications>

 Part of the [Medical Molecular Biology Commons](#)

Recommended Citation

Liu T, Son M, Diamond B. HMGB1 in Systemic Lupus Erythematosus. . 2020 Jan 01; 11():Article 7184 [p.]. Available from: <https://academicworks.medicine.hofstra.edu/publications/7184>. Free full text article.

This Article is brought to you for free and open access by Donald and Barbara Zucker School of Medicine Academic Works. It has been accepted for inclusion in Journal Articles by an authorized administrator of Donald and Barbara Zucker School of Medicine Academic Works. For more information, please contact academicworks@hofstra.edu.



HMGB1 in Systemic Lupus Erythematosus

Tianye Liu^{1,2}, Myoungsun Son^{1,2} and Betty Diamond^{1,2*}

¹ Center for Autoimmune Musculoskeletal and Hematopoietic Diseases, Institute of Molecular Medicine, The Feinstein Institutes for Medical Research, Manhasset, NY, United States, ² Donald and Barbara Zucker School of Medicine at Hofstra/Northwell, Hempstead, NY, United States

The high-mobility group box 1 (HMGB1) has been shown to exert proinflammatory effects on many cells of the innate immune system. Originally identified as a nuclear protein, HMGB1 has been found to play an important role in mediating inflammation when released from apoptotic or necrotic cells as a damage-associated molecular pattern (DAMP). Systemic lupus erythematosus (SLE) is a disease of non-resolving inflammation, characterized by the presence of autoantibodies and systemic inflammation involving multiple organ systems. SLE patients have impaired clearance of apoptotic debris, which releases HMGB1 and other DAMPs extracellularly. HMGB1 activity is implicated in multiple disease phenotypes in SLE, including lupus nephritis and neuropsychiatric lupus. Elucidating the various properties of HMGB1 in SLE provides a better understanding of the disease and opens up new opportunities for designing potential therapeutics.

OPEN ACCESS

Edited by:

Fabrice Cognasse,
Groupe Sur L'immunité Des
Muqueuses Et Agents Pathogènes
(GIMAP), France

Reviewed by:

Ulf Andersson,
Karolinska Institutet (KI), Sweden
Luz Pamela Blanco,
National Institutes of Health (NIH),
United States

*Correspondence:

Betty Diamond
bdiamond@northwell.edu

Specialty section:

This article was submitted to
Inflammation,
a section of the journal
Frontiers in Immunology

Received: 23 March 2020

Accepted: 01 May 2020

Published: 27 May 2020

Citation:

Liu T, Son M and Diamond B (2020)
HMGB1 in Systemic Lupus
Erythematosus.
Front. Immunol. 11:1057.
doi: 10.3389/fimmu.2020.01057

Keywords: HMGB1, SLE, neuropsychiatric SLE, lupus nephritis, innate immunity, adaptive immunity

INTRODUCTION

Systemic Lupus Erythematosus (SLE)

SLE is an autoimmune disease characterized by the production of autoantibodies and multi-organ system involvement with a wide array of clinical manifestations. The dominant clinical features include fever, arthritis, serositis, cutaneous lesions, neuropsychiatric and renal involvements (1). SLE is caused by aberrant activation of autoreactive B cells and subsequent production of autoantibodies against nucleic acid and nucleic acid binding proteins. These bind to tissue, often through cross-reactivity to a tissue antigen, and cause organ damage (2). Immune complexes containing nucleic acid can be internalized through Fc receptor engagement and activate cells of the innate immune system. Thus, neutrophils, monocytes, macrophages, and dendritic cells (DCs) contribute to SLE pathologies (3), in part following, cytosolic sensing of DNA or RNA in part through an impairment in the usual non-immunogenic clearance of apoptotic debris, and in part due to cell intrinsic genetic alterations.

Genetic factors in the context of environmental triggers are thought to play important roles (4). Some identified risk gene loci for SLE include BLIMP1, IRF5 and C1q (5–8). C1q binds to opsonized cellular debris to mediate the clearance of dead and dying cells (9–11). Genetic deficiency of C1q predisposes strongly to SLE (7, 12, 13). SLE occurs in approximately 90% of C1q-deficient individuals in many studies. These patients have severe central nervous system and renal autoimmune disease.

High-Mobility Group Box 1 Protein (HMGB1) in SLE

HMGB1 is a member of the family of high-mobility group (HMG) proteins which were identified as important non-histone nuclear proteins (14, 15). Also known as amphoterin, HMGB1 has

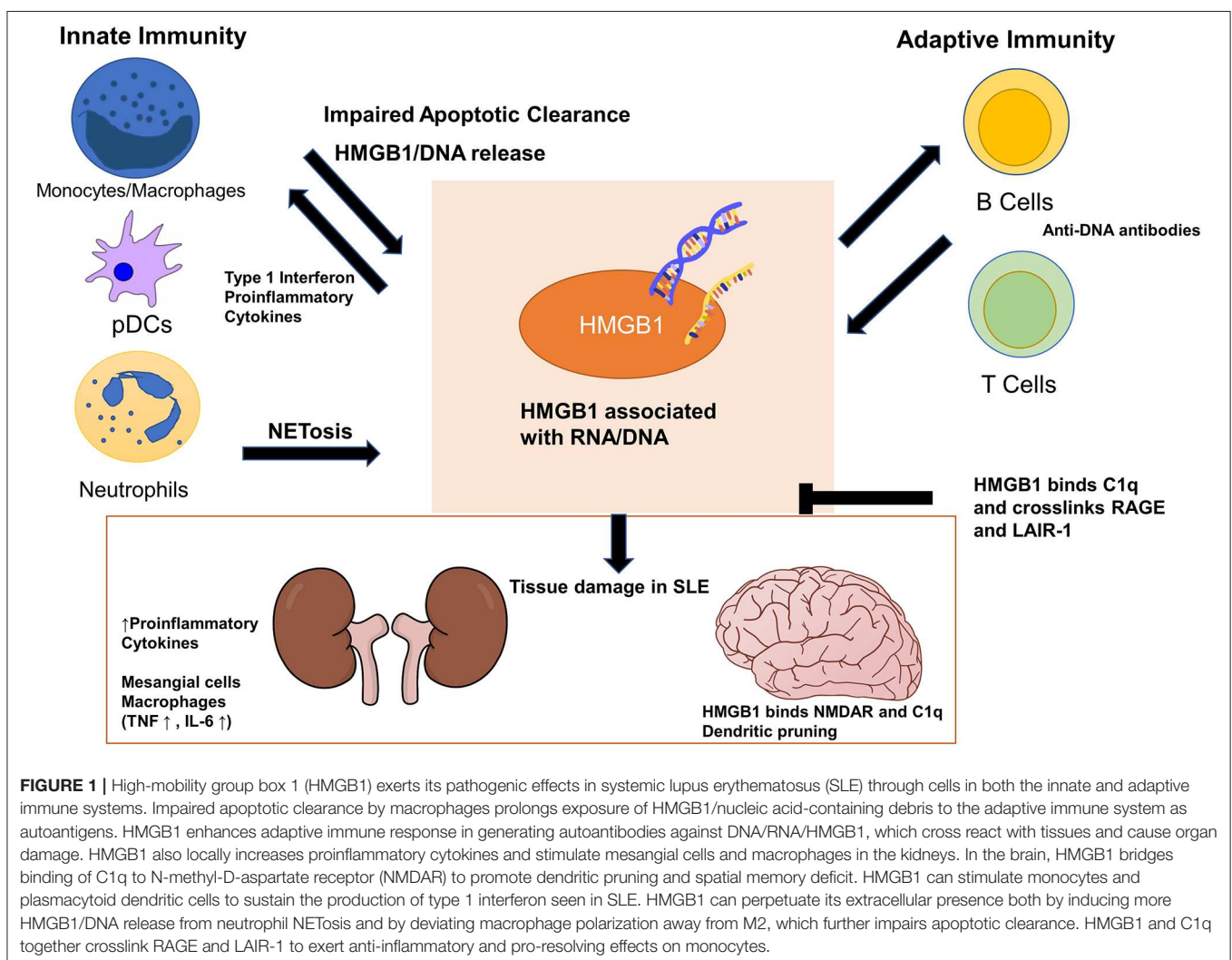
a molecular weight of 25 kDa and two positively charged nucleic acid binding motifs, A box and B box, and a negatively charged C-terminal tail (16, 17). The function of HMGB1 in the cell is context-dependent. In the nucleus, HMGB1 plays the essential role of bending DNA and facilitating its interaction with transcription factors. HMGB1 can also function as a DAMP outside the cell, activating the immune system and promoting inflammation. It is released from damaged cells or activated cells to exert its inflammatory effects (18). It binds both receptor for advanced glycation endproducts (RAGE), toll-like receptor 2 (TLR2) and TLR4 (19–21). There are three cysteine residues (C23, C45, C106) in HMGB1 and their redox states dictate the function of HMGB1. Histone H1 is most effective at inhibiting the DNA bending activities of oxidized HMGB1 (22). Additionally, HMGB1 oxidation is known to alter its extracellular receptor binding and subsequent functions. As reviewed by Janko et al., fully reduced HMGB1 can induce autophagy through binding to RAGE or together with CXCL12 can promote cell migration through binding to CXCR4. When C23 and C45 are oxidized to form a disulfide bond, HMGB1

can signal through TLR4 and cause pro-inflammatory cytokine release (23). Oxidative stress is known to be increased in SLE and contributes to immune system dysregulation (24) and it is likely that partially oxidized, disulfide HMGB1 contributes to this process. Serum HMGB1 is elevated in SLE patients and levels of serum HMGB1 correlate with disease activity (25). The present review discusses the role of HMGB1 as a DAMP in both the innate and the adaptive aspects of SLE pathogenesis (Figure 1).

HMGB1'S ROLE IN SLE PATHOGENESIS

Adaptive Immunity

Antibodies to nuclear antigens are the hallmark of SLE (26). These autoantibodies to ubiquitous self-antigens lead to immune complex formation, to deposition in tissue and ensuing tissue damage. Apoptotic defects are an important aspect of SLE pathogenesis (27). When apoptotic cells are not efficiently cleared, they can undergo secondary necrosis, releasing their intracellular contents (28). The HMGB1 released in this process can play a role as an autoadjuvant in the breakdown of B



cell tolerance and the generation of autoantibodies in SLE. As HMGB1 can bind both RNA and DNA it can activate cytosolic nucleic acid receptors after entering cells in a RAGE dependent fashion (29). It has been shown *in vivo* that HMGB1-nucleosome complexes activate antigen presenting cells and elicit an anti-dsDNA and anti-histone IgG response in a TLR2-dependent manner, whereas HMGB1-free nucleosome do not (30). Although anti-nuclear antibodies (ANA) in SLE most commonly bind to DNA and histones in nucleosomes, they are also reported to bind to HMGB1 itself (31, 32), although this may represent binding to DNA associated with HMGB1. Elevated anti-HMGB1 antibodies are observed in SLE and correlate to disease severity (33, 34). Coupled with elevated circulating HMGB1 seen in SLE patients, this can be a mechanism for immune complex formation that includes nucleic acid which is bound to the HMGB1.

Innate Immunity

Although the adaptive immune system has been studied extensively for its roles in producing autoreactive antibodies in SLE, the innate immune system is increasingly appreciated as playing an important role in the pathogenesis of SLE (35). Activating Fc γ receptors are highly expressed on monocyte-derived dendritic cells (mo-DC) and macrophages. Immune complexes formed by DNA or RNA/HMGB1 and IgG can activate these innate immune cells through their Fc γ receptors to elicit their inflammatory functions (36), which include secretion of type 1 interferon (IFN), TNF α , IL-6 and more. The IFN pathway is a crucial contributor to the disease in some models of SLE. Type I IFN can cause the loss of peripheral tolerance by maturing dendritic cells, which activates T cells that eventually help expand autoreactive B cells (37).

While plasmacytoid DCs (pDCs) make the most type 1 IFN on a per cell basis, monocytes are important IFN producers in SLE because of their abundance compared to pDCs (38). Nucleic acids need to be internalized into monocytes and delivered to TLRs 7 and 9 to trigger the production of IFNs. HMGB1 chaperones nucleic acid to endosomal TLRs through a RAGE dependent pathway (39). Porat et al. described two pathways by which SLE serum can activate monocytes, one of which involves HMGB1 delivering its nucleic acid cargo by binding and internalization with RAGE (40). The induction of the IFN signature genes by HMGB1 was shown to be inhibited by a DNA mimotope binding to HMGB1, preventing its interaction with RAGE (40).

PDCs, mentioned above, are specialized to produce high amounts of type I interferons (41). Upon TLR 7 or 9 activation, HMGB1 leaves the nuclei of pDCs and pDCs increase their expression of RAGE as a part of their maturation (42). This creates an autocrine loop which sustains type I IFN production. The pathogenic role of pDCs in SLE is often considered to be a consequence of their production of type I IFNs. Patients with SLE have reduced numbers of pDCs in the blood and an accumulation of pDCs in tissues (43). Reciprocally, IFN regulates HMGB1 secretion by driving its translocation from the nucleus to the cytoplasm prior to release into the extracellular space (44). The

activation of the JAK/STAT1 signaling pathway by type 1 IFN stimulation induces this process (45). Additionally, IFN- γ has also been shown to dose-dependently induce HMGB1 release through a TNF-dependent mechanism (46). Taken together, these processes highlight the important role HMGB1 plays in initiating nucleotide-induced IFN signature in SLE.

Neutrophils in SLE can mediate tissue damage and produce IFNs (47). Neutrophils can undergo a specialized form of cell death known as NETosis, releasing neutrophil extracellular traps (NETs), primarily composed of DNA and nuclear proteins. Normally, this process functions to prevent the dissemination of pathogens. In SLE, uncleared NETs can become a source of nuclear self-antigens and immune complexes and complement activation, thereby perpetuating the inflammatory response (48). HMGB1 is both released from neutrophils as a part of NETs and itself can induce the release of NETs. It has been shown that HMGB1 promotes the formation of NETs in mice in a TLR4 dependent manner (49). NETs are confirmed as a source of HMGB1 in SLE patients and are positively correlated with disease progression in lupus nephritis (50).

It is important to note, however, that macrophages, especially those expressing SLE risk alleles, also contribute to SLE (51). Macrophages from SLE patients are defective at clearing apoptotic debris and this delayed clearance can lead to prolonged exposure of autoantigens to the adaptive immune system (52, 53). Monocytes can differentiate into classically activated macrophages (M1) responsible for inflammation and tissue destruction, or alternatively activated macrophages (M2) involved in phagocytosis, inflammation resolution and tissue repair (54). Gene expression profiles have revealed that SLE patients have a biased activation toward M1 macrophages (55). Part of this activation pattern may be explained by the elevated HMGB1 in SLE patients. HMGB1 is known to polarize monocytes into M1-like macrophage phenotypes, skewing macrophage phenotype away from M2-like differentiation and thus decreasing phagocytosis of apoptotic cells (56), leaving patients susceptible to the breakdown of peripheral B cell tolerance and the generation of autoantibodies.

HMGB1 has also been shown to bind to C1q, a component of the classical complement pathway. Leukocyte-associated immunoglobulin-like receptor 1 (LAIR-1) is an inhibitory receptor for C1q on the membrane of many immune cells (57, 58). Son et al showed that HMGB1 and C1q can form a tetramolecular complex on the lipid raft with RAGE and LAIR-1 on monocytes, causing M2-like pro-resolving macrophage polarization (59). In the absence of C1q, or when C1q is low due to immune complex-mediated complement consumption, the high level of HMGB1 in SLE patients may skew to M1 macrophage polarization unchecked, promoting inflammation and further reducing clearance of apoptotic cells, exposing autoantigens and thus creating a favorable environment for the adaptive immune system to generate autoantibodies. It is also reported that in pediatric SLE, elevation of serum HMGB1 and type 1 IFN occur with together decreased expression of LAIR-1 on pDCs, suggesting a potential mechanism for a loss of the inhibitory function of LAIR-1 in SLE (60).

ROLE OF HMGB1 IN SPECIFIC SLE DISEASE PHENOTYPES

HMGB1 in Lupus Nephritis

The role of HMGB1 in lupus nephritis (LN) illustrates its central role in linking the innate and adaptive aspects to cause the disease phenotype. Lupus nephritis is an example of immune complex-mediated end organ damage in SLE. It is a frequent complication and an important cause of long-term disability and death in the disease (61). Its etiology, as with that of SLE as a whole, involves the loss of immune tolerance resulting in the production of autoantibodies against nuclear autoantigens, potentially through increased exposure to specific antigens and also through polyclonal B cell activation. These immune complexes activate intrarenal TLRs and IFN signaling, resulting in the local production of proinflammatory cytokines by glomerular endothelium, mesangial cells and macrophages. Damage to renal parenchyma triggers tissue repair mechanisms that lead to glomerulosclerosis and chronic kidney failure (61).

Putterman et al. have shown that in the MRL/lpr mouse model of SLE, anti-DNA antibodies can alter the gene expression in mesangial cells of the kidney, upregulating proinflammatory genes and facilitating kidney damage (62). They further demonstrated that HMGB1 has a synergistic effect with anti-DNA antibodies on this process in a RAGE/TLR2 dependent manner (63). It has also been shown that, through TLR2, HMGB1 can induce proliferation of glomerular mesangial cells. Inhibition of either HMGB1 or TLR2 resulted in the decrease in fibronectin and collagen IV, accompanied by improved glomerular histological changes and sclerosis levels (64).

Renal macrophages from the SLE mice were found to be strong producers of the proinflammatory cytokines TNF α and IL-6, which have been suggested as important pathogenic cytokines in mediating kidney inflammation and damage in SLE (65). HMGB1 overexpression in mice resulted in an increased macrophage proinflammatory cytokine response and increased severity of lupus nephritis, whereas administration of glycyrrhizin, a blocker of HMGB1 had an opposite effect (66). Both *in vivo* and *in vitro* experiments confirmed that HMGB1's enhancement of macrophage response is through receptor RAGE (66). These results demonstrate that HMGB1 has kidney-specific effects in addition to its global contribution to SLE's etiology. Finally, urinary HMGB1 has been shown to differentiate SLE patients with active LN from inactive and from healthy individuals (67), again suggesting high local concentrations of HMGB1 in LN.

HMGB1 in Neuropsychiatric SLE

Neuropsychiatric systemic lupus erythematosus (NPSLE) is a manifestation of SLE reported in up to 80% of patients. It can affect both the central and the peripheral nervous systems and is mostly characterized by cognitive impairment (68). Damage to the blood-brain-barrier can be seen in NPSLE, which allows anti-DNA antibodies access to the central nervous system (69). A subset of anti-DNA antibodies termed DNRAbs cross reacts with the N-methyl-D-aspartate receptor (NMDAR). In mouse models of SLE, enhanced NMDAR signaling by DNRAbs result

in spatial memory impairments (70–73) and in patients, elevated titers of DNRAb correlate with memory impairment. Transient exposure to DNRAb leads to long-term neuronal dysfunction through a 2-stage process with stage 1 involving excitotoxic neuronal death and stage 2 involving microglia activation and neuronal pruning (74). HMGB1 can be secreted by stressed or activated cells, including neurons activated through the NMDAR. Interestingly HMGB1 binds to NMDARs. Nestor et al. showed that dendrites bound to C1q are targeted for destruction, resulting in the deficits in spatial memory seen in SLE. C1q uses HMGB1 as a bridge that connects it to the NMDAR. Both *in vivo* and *in vitro* data showed that NMDAR-HMGB1-C1q complexes formed on dendrites target them for destruction by microglia, which itself is activated by HMGB1 through RAGE/TLR4 (74).

HMGB1-BASED THERAPEUTICS

The standard treatments options for SLE are currently centered around corticosteroids and immunosuppressive drugs with numerous unwanted side effects (75). Therapeutics have shifted toward targeting specific pathways (76). Small molecule inhibitors of HMGB1 such as tashinone IIA derivatives and glycyrrhizin are being investigated with some clinical success (77). The possible therapeutic effects of HMGB1-specific antagonists have also been explored in several preclinical studies. The A box domain of HMGB1 alone can bind to HMGB1 receptors such as TLR2/4 and RAGE without eliciting proinflammatory responses and can, therefore, serve as a potent competitive inhibitor of HMGB1 (18). Administration of HMGB1 A box as an HMGB1 antagonist has been shown to reverse lethality in a model of sepsis (78). The effects of monoclonal HMGB1-neutralizing antibodies have also been investigated in various diseases. In SLE specifically, studies on monoclonal HMGB1 antibodies showed conflicting results, with some experiments demonstrating amelioration of SLE disease phenotypes in MRL/lpr mice and BXSB mice (79, 80) while another finding no effects in disease progression in MRL/lpr mice (81). Contrasting clinical outcomes have led to efforts in inhibiting HMGB1 by other means. In addition to direct inhibition of HMGB1, pathways involving HMGB1 can be harnessed for their anti-inflammatory effects. HMGB1 is known to regulate macrophage polarization through its interaction with RAGE, LAIR-1 and C1q (59). Further studies showed that HMGB1 through a positive feedback loop involving IRF5 increases leukotriene B4 production in activated monocytes while HMGB1 plus C1q increase the production of specialized pro-resolving lipid mediators (82). In the same study, a fusion protein that contains the RAGE-binding fragment of HMGB1 and the LAIR-1-binding fragment of C1q were shown to crosslink the two receptors the same way HMGB1 and C1q do and to exert the same pro-resolving effects both *in vivo* and *in vitro* (82). Recognizing that HMGB1 can be harnessed to enhance tolerogenic properties of the immune system opens up novel opportunities for potential therapeutics.

CONCLUDING REMARKS

HMGB1 has been shown to affect a wide array of disease processes in SLE. Functioning both as a DAMP, HMGB1 is able to exert its pathogenic effects on both the innate and the adaptive immune systems. HMGB1 also interacts with local cells in the diseased organs in SLE, exacerbating disease progression. Investigating the various effects of HMGB1 on the immune system can be extremely valuable in enhancing our understanding of SLE, and in the development of new therapeutics.

AUTHOR CONTRIBUTIONS

TL wrote the manuscript and prepared the figure. MS contributed to the conception and scheme of the manuscript. BD

contributed to the conception, supervision, and critical revision of the manuscript.

FUNDING

This work was supported by grants from the National Institute of Allergy and Infectious Diseases of the National Institutes of Health [P01AI02852 (BD) and R01AI135063 (MS)].

ACKNOWLEDGMENTS

We would like to thank Dr. Bruce T. Volpe for kindly reviewing the manuscript.

REFERENCES

- Tamirou F, Arnaud L, Talarico R, Scire CA, Alexander T, Amoura Z, et al. Systemic lupus erythematosus: state of the art on clinical practice guidelines. *RMD Open*. (2018) 4:e000793. doi: 10.1136/rmdopen-2018-000793
- Choi J, Kim ST, Craft J. The pathogenesis of systemic lupus erythematosus—an update. *Curr Opin Immunol*. (2012) 24:651–7. doi: 10.1016/j.coi.2012.10.004
- Weidenbusch M, Kulkarni OP, Anders HJ. The innate immune system in human systemic lupus erythematosus. *Clin Sci*. (2017) 131:625–34. doi: 10.1042/CS20160415
- Maidhof W, Hilas O. Lupus: an overview of the disease and management options. *P T*. (2012) 37:240–9.
- Kim SJ. Immunological function of Blimp-1 in dendritic cells and relevance to autoimmune diseases. *Immunol Res*. (2015) 63:113–20. doi: 10.1007/s12026-015-8694-5
- Calise J, Marquez Renteria S, Gregersen PK, Diamond B. Lineage-specific functionality of an interferon regulatory factor 5 lupus risk haplotype: lack of B cell intrinsic effects. *Front Immunol*. (2018) 9:996. doi: 10.3389/fimmu.2018.00996
- Macedo AC, Isaac L. Systemic lupus erythematosus and deficiencies of early components of the complement classical pathway. *Front Immunol*. (2016) 7:55. doi: 10.3389/fimmu.2016.00055
- Son M, Kim SJ, Diamond B. SLE-associated risk factors affect DC function. *Immunol Rev*. (2016) 269:100–17. doi: 10.1111/imr.12348
- Brencicova E, Diebold SS. Nucleic acids and endosomal pattern recognition: how to tell friend from foe? *Front Cell Infect Microbiol*. (2013) 3:37. doi: 10.3389/fcimb.2013.00037
- Korb LC, Ahearn JM. C1q binds directly and specifically to surface blebs of apoptotic human keratinocytes: complement deficiency and systemic lupus erythematosus revisited. *J Immunol*. (1997) 158:4525–8.
- Scott D, Botto M. The paradoxical roles of C1q and C3 in autoimmunity. *Immunobiology*. (2016) 221:719–25. doi: 10.1016/j.imbio.2015.05.001
- Baumann I, Kolowos W, Voll RE, Manger B, Gaipl U, Neuhuber WL, et al. Impaired uptake of apoptotic cells into tingible body macrophages in germinal centers of patients with systemic lupus erythematosus. *Arthritis Rheum*. (2002) 46:191–201. doi: 10.1002/1529-0131(200201)46:1<191::AID-ART10027>3.0.CO;2-K
- Gaipl US, Munoz LE, Grossmayer G, Lauber K, Franz S, Sarter K, et al. Clearance deficiency and systemic lupus erythematosus (SLE). *J Autoimmun*. (2007) 28:114–21. doi: 10.1016/j.jaut.2007.02.005
- Goodwin GH, Sanders C, Johns EW. A new group of chromatin-associated proteins with a high content of acidic and basic amino acids. *Eur J Biochem*. (1973) 38:14–9. doi: 10.1111/j.1432-1033.1973.tb03026.x
- Yanai H, Ban T, Taniguchi T. Essential role of high-mobility group box proteins in nucleic acid-mediated innate immune responses. *J Intern Med*. (2011) 270:301–8. doi: 10.1111/j.1365-2796.2011.02433.x
- Bianchi ME, Falcioni L, Ferrari S, Lilley DM. The DNA binding site of HMG1 protein is composed of two similar segments. (HMG boxes), both of which have counterparts in other eukaryotic regulatory proteins. *EMBO J*. (1992) 11:1055–63. doi: 10.1002/j.1460-2075.1992.tb05144.x
- Yang H, Antoine DJ, Andersson U, Tracey KJ. The many faces of HMGB1: molecular structure-functional activity in inflammation, apoptosis, and chemotaxis. *J Leukoc Biol*. (2013) 93:865–73. doi: 10.1189/jlb.1212662
- Andersson U, Yang H, Harris H. Extracellular HMGB1 as a therapeutic target in inflammatory diseases. *Expert Opin Ther Targets*. (2018) 22:263–77. doi: 10.1080/14728222.2018.1439924
- Huttunen HJ, Fages C, Kuja-Panula J, Ridley AJ, Rauvala H. Receptor for advanced glycation end products-binding COOH-terminal motif of amphotericin inhibits invasive migration and metastasis. *Cancer Res*. (2002) 62:4805–11.
- Yu M, Wang H, Ding A, Golenbock DT, Latz E, Czura CJ, et al. HMGB1 signals through toll-like receptor. (TLR) 4 and TLR2. *Shock*. (2006) 26:174–9. doi: 10.1097/01.shk.0000225404.51320.82
- Aucott H, Sowinska A, Harris HE, Lundback P. Ligation of free HMGB1 to TLR2 in the absence of ligand is negatively regulated by the C-terminal tail domain. *Mol Med*. (2018) 24:19. doi: 10.1186/s10020-018-0021-x
- Stros M, Polanska E, Kucirek M, Pospisilova S. Histone H1 differentially inhibits DNA bending by reduced and oxidized HMGB1 protein. *PLoS ONE*. (2015) 10:e0138774. doi: 10.1371/journal.pone.0138774
- Janko C, Filipovic M, Munoz LE, Schorn C, Schett G, Ivanovic-Burmazovic I, et al. Redox modulation of HMGB1-related signaling. *Antioxid Redox Signal*. (2014) 20:1075–85. doi: 10.1089/ars.2013.5179
- Perl A. Oxidative stress in the pathology and treatment of systemic lupus erythematosus. *Nat Rev Rheumatol*. (2013) 9:674–86. doi: 10.1038/nrrheum.2013.147
- Tanaka A, Ito T, Kibata K, Inagaki-Katashiba N, Amuro H, Nishizawa T, et al. Serum high-mobility group box 1 is correlated with interferon-alpha and may predict disease activity in patients with systemic lupus erythematosus. *Lupus*. (2019) 28:1120–7. doi: 10.1177/0961203319862865
- Agarwal S, Harper J, Kiely PD. Concentration of antibodies to extractable nuclear antigens and disease activity in systemic lupus erythematosus. *Lupus*. (2009) 18:407–12. doi: 10.1177/0961203308097784
- Munoz LE, Van Bavel C, Franz S, Berden J, Herrmann M, Van Der Vlag J. Apoptosis in the pathogenesis of systemic lupus erythematosus. *Lupus*. (2008) 17:371–5. doi: 10.1177/0961203308089990
- Sachet M, Liang YY, Oehler R. The immune response to secondary necrotic cells. *Apoptosis*. (2017) 22:1189–204. doi: 10.1007/s10495-017-1413-z
- Yanai H, Ban T, Wang Z, Choi MK, Kawamura T, Negishi H, et al. HMGB proteins function as universal sentinels for nucleic-acid-mediated innate immune responses. *Nature*. (2009) 462:99–103. doi: 10.1038/nature08512

30. Urbonaviciute V, Furnrohr BG, Meister S, Munoz L, Heyder P, De Marchis F, et al. Induction of inflammatory and immune responses by HMGB1-nucleosome complexes: implications for the pathogenesis of SLE. *J Exp Med*. (2008) 205:3007–18. doi: 10.1084/jem.20081165
31. Pisetsky DS. The complex role of DNA, histones and HMGB1 in the pathogenesis of SLE. *Autoimmunity*. (2014) 47:487–93. doi: 10.3109/08916934.2014.921811
32. Schaper F, De Leeuw K, Horst G, Maas F, Bootsma H, Heeringa P, et al. Autoantibodies to box A of high mobility group box 1 in systemic lupus erythematosus. *Clin Exp Immunol*. (2017) 188:412–9. doi: 10.1111/cei.12951
33. Abdulhad DA, Westra J, Bijzet J, Limburg PC, Kallenberg CG, Bijl M. High mobility group box 1. (HMGB1) and anti-HMGB1 antibodies and their relation to disease characteristics in systemic lupus erythematosus. *Arthritis Res Ther*. (2011) 13:R71. doi: 10.1186/ar3332
34. Wirestam L, Schierbeck H, Skogh T, Gunnarsson I, Ottosson L, Erlandsson-Harris H, et al. Antibodies against High Mobility Group Box protein-1. (HMGB1) versus other anti-nuclear antibody fine-specificities and disease activity in systemic lupus erythematosus. *Arthritis Res Ther*. (2015) 17:338. doi: 10.1186/s13075-015-0856-2
35. Herrada AA, Escobedo N, Iruretagoyena M, Valenzuela RA, Burgos PI, Cuitino L, et al. Innate immune cells' contribution to systemic lupus erythematosus. *Front Immunol*. (2019) 10:772. doi: 10.3389/fimmu.2019.00772
36. Guilliams M, Bruhns P, Saey Y, Hammad H, Lambrecht BN. The function of Fcγ receptors in dendritic cells and macrophages. *Nat Rev Immunol*. (2014) 14:94–108. doi: 10.1038/nri3582
37. Banchereau J, Pascual V. Type I interferon in systemic lupus erythematosus and other autoimmune diseases. *Immunity*. (2006) 25:383–92. doi: 10.1016/j.immuni.2006.08.010
38. Li Y, Lee PY, Reeves WH. Monocyte and macrophage abnormalities in systemic lupus erythematosus. *Arch Immunol Ther Exp*. (2010) 58:355–64. doi: 10.1007/s00005-010-0093-y
39. Tian J, Avalos AM, Mao SY, Chen B, Senthil K, Wu H, et al. Toll-like receptor 9-dependent activation by DNA-containing immune complexes is mediated by HMGB1 and RAGE. *Nat Immunol*. (2007) 8:487–96. doi: 10.1038/ni1457
40. Porat A, Giat E, Kowal C, He M, Son M, Latz E, et al. DNA-mediated interferon signature induction by SLE serum occurs in monocytes through two pathways: a mechanism to inhibit both pathways. *Front Immunol*. (2018) 9:2824. doi: 10.3389/fimmu.2018.02824
41. Cella M, Jarrossay D, Facchetti F, Aleardi O, Nakajima H, Lanzavecchia A, et al. Plasmacytoid monocytes migrate to inflamed lymph nodes and produce large amounts of type I interferon. *Nat Med*. (1999) 5:919–23. doi: 10.1038/11360
42. Dumitriu IE, Baruah P, Bianchi ME, Manfredi AA, Rovere-Querini P. Requirement of HMGB1 and RAGE for the maturation of human plasmacytoid dendritic cells. *Eur J Immunol*. (2005) 35:2184–90. doi: 10.1002/eji.200526066
43. Farkas L, Beiske K, Lund-Johansen F, Brandtzaeg P, Jahnsen FL. Plasmacytoid dendritic cells. (natural interferon-α/β-producing cells) accumulate in cutaneous lupus erythematosus lesions. *Am J Pathol*. (2001) 159:237–43. doi: 10.1016/S0002-9440(10)61689-6
44. Gauley J, Pisetsky DS. The translocation of HMGB1 during cell activation and cell death. *Autoimmunity*. (2009) 42:299–301. doi: 10.1080/08916930902831522
45. Lu B, Antoine DJ, Kwan K, Lundback P, Wahamaa H, Schierbeck H, et al. JAK/STAT1 signaling promotes HMGB1 hyperacetylation and nuclear translocation. *Proc Natl Acad Sci USA*. (2014) 111:3068–73. doi: 10.1073/pnas.1316925111
46. Rendon-Mitchell B, Ochani M, Li J, Han J, Wang H, Yang H, et al. IFN-γ induces high mobility group box 1 protein release partly through a TNF-dependent mechanism. *J Immunol*. (2003) 170:3890–7. doi: 10.4049/jimmunol.170.7.3890
47. Kaplan MJ. Neutrophils in the pathogenesis and manifestations of SLE. *Nat Rev Rheumatol*. (2011) 7:691–9. doi: 10.1038/nrrheum.2011.132
48. Leffler J, Martin M, Gullstrand B, Tyden H, Lood C, Truedsson L, et al. Neutrophil extracellular traps that are not degraded in systemic lupus erythematosus activate complement exacerbating the disease. *J Immunol*. (2012) 188:3522–31. doi: 10.4049/jimmunol.1102404
49. Tadie JM, Bae HB, Jiang S, Park DW, Bell CP, Yang H, et al. HMGB1 promotes neutrophil extracellular trap formation through interactions with Toll-like receptor 4. *Am J Physiol Lung Cell Mol Physiol*. (2013) 304:L342–9. doi: 10.1152/ajplung.00151.2012
50. Whittall-Garcia LP, Torres-Ruiz J, Zentella-Dehesa A, Tapia-Rodriguez M, Alcocer-Varela J, Mendez-Huerta N, et al. Neutrophil extracellular traps are a source of extracellular HMGB1 in lupus nephritis: associations with clinical and histopathological features. *Lupus*. (2019) 28:1549–57. doi: 10.1177/0961203319883936
51. Chalmers SA, Chitu V, Herlitz LC, Sahu R, Stanley ER, Putterman C. Macrophage depletion ameliorates nephritis induced by pathogenic antibodies. *J Autoimmun*. (2015) 57:42–52. doi: 10.1016/j.jaut.2014.11.007
52. Bijl M, Reefman E, Horst G, Limburg PC, Kallenberg CG. Reduced uptake of apoptotic cells by macrophages in systemic lupus erythematosus: correlates with decreased serum levels of complement. *Ann Rheum Dis*. (2006) 65:57–63. doi: 10.1136/ard.2005.035733
53. Tas SW, Quartier P, Botto M, Fossati-Jimack L. Macrophages from patients with SLE and rheumatoid arthritis have defective adhesion in vitro, while only SLE macrophages have impaired uptake of apoptotic cells. *Ann Rheum Dis*. (2006) 65:216–21. doi: 10.1136/ard.2005.037143
54. Mantovani A, Sica A, Sozzani S, Allavena P, Vecchi A, Locati M. The chemokine system in diverse forms of macrophage activation and polarization. *Trends Immunol*. (2004) 25:677–86. doi: 10.1016/j.it.2004.09.015
55. Labonte AC, Kegerreis B, Geraci NS, Bachali P, Madamanchi S, Robi R, et al. Identification of alterations in macrophage activation associated with disease activity in systemic lupus erythematosus. *PLoS ONE*. (2018) 13:e0280132. doi: 10.1371/journal.pone.0208132
56. Schaper F, De Leeuw K, Horst G, Bootsma H, Limburg PC, Heeringa P, et al. High mobility group box 1 skews macrophage polarization and negatively influences phagocytosis of apoptotic cells. *Rheumatology*. (2016) 55:2260–70. doi: 10.1093/rheumatology/kew324
57. Son M, Santiago-Schwarz F, Al-Abed Y, Diamond B. C1q limits dendritic cell differentiation and activation by engaging LAIR-1. *Proc Natl Acad Sci USA*. (2012) 109:E3160–7. doi: 10.1073/pnas.1212753109
58. Van Der Vuurst De Vries AR, Clevers H, Logtenberg T, Meyaard L. Leukocyte-associated immunoglobulin-like receptor-1 (LAIR-1) is differentially expressed during human B cell differentiation and inhibits B cell receptor-mediated signaling. *Eur J Immunol*. (1999) 29:3160–7. doi: 10.1002/(SICI)1521-4141(199910)29:10<3160::AID-IMMU3160>3.0.CO;2-S
59. Son M, Porat A, He M, Suurmond J, Santiago-Schwarz F, Andersson U, et al. C1q and HMGB1 reciprocally regulate human macrophage polarization. *Blood*. (2016) 128:2218–28. doi: 10.1182/blood-2016-05-719757
60. Kanakoudi-Tsakalidou F, Farmaki E, Tzimouli V, Taparkou A, Paterakis G, Trachana M, et al. Simultaneous changes in serum HMGB1 and IFN-α levels and in LAIR-1 expression on plasmacytoid dendritic cells of patients with juvenile SLE. New therapeutic options? *Lupus*. (2014) 23:305–12. doi: 10.1177/0961203313519157
61. Sterner RM, Hartono SP, Grande JP. The pathogenesis of lupus nephritis. *J Clin Cell Immunol* 5.
62. Qing X, Zavadil J, Crosby MB, Hogarth MP, Hahn BH, Mohan C, et al. Nephritogenic anti-DNA antibodies regulate gene expression in MRL/lpr mouse glomerular mesangial cells. *Arthritis Rheum*. (2006) 54:2198–210. doi: 10.1002/art.21934
63. Qing X, Pitashny M, Thomas DB, Barrat FJ, Hogarth MP, Putterman C. Pathogenic anti-DNA antibodies modulate gene expression in mesangial cells: involvement of HMGB1 in anti-DNA antibody-induced renal injury. *Immunol Lett*. (2008) 121:61–73. doi: 10.1016/j.imlet.2008.08.007
64. Feng X, Yang R, Tian Y, Miao X, Guo H, Gao F, et al. HMGB1 protein promotes glomerular mesangial matrix deposition via TLR2 in lupus nephritis. *J Cell Physiol*. (2020) 235:5111–9. doi: 10.1002/jcp.29379
65. Yap DY, Lai KN. The role of cytokines in the pathogenesis of systemic lupus erythematosus - from bench to bedside. *Nephrology*. (2013) 18:243–55. doi: 10.1111/nep.12047
66. Lu M, Yu S, Xu W, Gao B, Xiong S. HMGB1 promotes systemic lupus erythematosus by enhancing macrophage inflammatory response. *J Immunol Res*. (2015) 2015:946748. doi: 10.1155/2015/946748

67. Burbano C, Gomez-Puerta JA, Munoz-Vahos C, Vanegas-Garcia A, Rojas M, Vasquez G, et al. HMGB1(+) microparticles present in urine are hallmarks of nephritis in patients with systemic lupus erythematosus. *Eur J Immunol.* (2019) 49:323–35. doi: 10.1002/eji.201847747
68. Hanly JG, Mccurdy G, Fougere L, Douglas JA, Thompson K. Neuropsychiatric events in systemic lupus erythematosus: attribution and clinical significance. *J Rheumatol.* (2004) 31:2156–62.
69. Abbott NJ, Mendonca LL, Dolman DE. The blood-brain barrier in systemic lupus erythematosus. *Lupus.* (2003) 12:908–15. doi: 10.1191/0961203303lu501oa
70. Degiorgio LA, Konstantinov KN, Lee SC, Hardin JA, Volpe BT, Diamond B. A subset of lupus anti-DNA antibodies cross-reacts with the NR2 glutamate receptor in systemic lupus erythematosus. *Nat Med.* (2001) 7:1189–93. doi: 10.1038/nm1101-1189
71. Kowal C, Degiorgio LA, Nakaoka T, Hetherington H, Huerta PT, Diamond B, et al. Cognition and immunity; antibody impairs memory. *Immunity.* (2004) 21:179–88. doi: 10.1016/j.immuni.2004.07.011
72. Faust TW, Chang EH, Kowal C, Berlin R, Gazaryan IG, Bertini E, et al. Neurotoxic lupus autoantibodies alter brain function through two distinct mechanisms. *Proc Natl Acad Sci USA.* (2010) 107:18569–74. doi: 10.1073/pnas.1006980107
73. Chang EH, Volpe BT, Mackay M, Aranow C, Watson P, Kowal C, et al. Selective impairment of spatial cognition caused by autoantibodies to the N-methyl-D-aspartate receptor. *EBioMedicine.* (2015) 2:755–64. doi: 10.1016/j.ebiom.2015.05.027
74. Nestor J, Arinuma Y, Huerta TS, Kowal C, Nasiri E, Kello N, et al. Lupus antibodies induce behavioral changes mediated by microglia and blocked by ACE inhibitors. *J Exp Med.* (2018) 215:2554–66. doi: 10.1084/jem.20180776
75. Durcan L, Petri M. Immunomodulators in SLE: clinical evidence and immunologic actions. *J Autoimmun.* (2016) 74:73–84. doi: 10.1016/j.jaut.2016.06.010
76. Vukelic M, Li Y, Kyttaris VC. Novel treatments in lupus. *Front Immunol.* (2018) 9:2658. doi: 10.3389/fimmu.2018.02658
77. Musumeci D, Roviello GN, Montesarchio D. An overview on HMGB1 inhibitors as potential therapeutic agents in HMGB1-related pathologies. *Pharmacol Ther.* (2014) 141:347–57. doi: 10.1016/j.pharmthera.2013.11.001
78. Yang H, Ochani M, Li J, Qiang X, Tanovic M, Harris HE, et al. Reversing established sepsis with antagonists of endogenous high-mobility group box 1. *Proc Natl Acad Sci USA.* (2004) 101:296–301. doi: 10.1073/pnas.2434651100
79. Watanabe H, Watanabe KS, Liu K, Hiramatsu S, Zeggar S, Katsuyama E, et al. Anti-high mobility group box 1 antibody ameliorates albuminuria in MRL/lpr lupus-prone mice. *Mol Ther Methods Clin Dev.* (2017) 6:31–9. doi: 10.1016/j.omtm.2017.05.006
80. Zhang C, Li C, Jia S, Yao P, Yang Q, Zhang Y. High-mobility group box 1 inhibition alleviates lupus-like disease in BXSB mice. *Scand J Immunol.* (2014) 79:333–7. doi: 10.1111/sji.12165
81. Schaper F, Van Timmeren MM, Petersen A, Horst G, Bijl M, Limburg PC, et al. Treatment with anti-HMGB1 monoclonal antibody does not affect lupus nephritis in MRL/lpr mice. *Mol Med.* (2016) 22:12–21. doi: 10.2119/molmed.2015.00176
82. Liu T, Xiang A, Peng T, Doran AC, Tracey KJ, Barnes BJ, et al. HMGB1-C1q complexes regulate macrophage function by switching between leukotriene and specialized proresolving mediator biosynthesis. *Proc Natl Acad Sci USA.* (2019) 116:23254–63. doi: 10.1073/pnas.1907490116

Conflict of Interest: The authors declare that the research was conducted in the absence of any commercial or financial relationships that could be construed as a potential conflict of interest.

Copyright © 2020 Liu, Son and Diamond. This is an open-access article distributed under the terms of the Creative Commons Attribution License (CC BY). The use, distribution or reproduction in other forums is permitted, provided the original author(s) and the copyright owner(s) are credited and that the original publication in this journal is cited, in accordance with accepted academic practice. No use, distribution or reproduction is permitted which does not comply with these terms.