

CONFERENCE

IOP Conference Series

Earth and Environmental Science

1st Workshop on Metrology for Agriculture
and Forestry (METROAGRIFOR)

275

VOLUME 275 – 2019

1–2 October 2018
Aversa, Italy

EDITOR
Enrico Piana Tomassini

The open access journal for conference proceedings

openiournals.org/iopcon

IOP Publishing

Table of contents

Volume 1103

2022

◀ Previous issue Next issue ▶

Natural Disaster Seminar 2019 02/10/2019 - 05/10/2019 Malaysia, Malaysia

Accepted papers received: 14 October 2022

Published online: 24 November 2022

Open all abstracts

Preface

OPEN ACCESS 011001

Preface

+ Open abstract  View article  PDF

OPEN ACCESS 011002

Peer Review Statement

+ Open abstract  View article  PDF

Climatic Hazards

OPEN ACCESS 012001

Level of public awareness on climate change in Sabah

Audrey Liwan, Nur Sakina Suriانشah, Sarimah Suriانشah and Josephine Yau Tan Hwang

+ Open abstract  View article  PDF

OPEN ACCESS 012002

Assessing short term air quality trend in Malaysia based on air pollution index (APi)

J Sentian, M S Nur Sayzni and C Payus

+ Open abstract  View article  PDF

OPEN ACCESS 012003

Effect of Monsoonal Clustering for PM₁₀ Concentration Prediction in Keningau, Sabah using Principal Component Analysis

Muhammad Izzuddin Rumaling, F P Chee, J H W Chang and J Sentian

This site uses cookies. By continuing to use this site you agree to our use of cookies. To find out more, see our Privacy and Cookies policy.

+ Open abstract  View article  PDF



OPEN ACCESS

012004

Application of K-Means Clustering and Calendar View Visualisation for Air Pollution Index Analysis

Z Ali Omar, Siti Rahayu Mohd Hashim, Justin Sentian and Su Na Chin

[+ Open abstract](#) [View article](#) [PDF](#)

OPEN ACCESS

012005

Assessment of Flood Susceptibility Analysis Using Analytical Hierarchy Process (AHP) in Kota Belud Area, Sabah, Malaysia

Kamilia Sharir, Goh Thian Lai, Norbert Simon, Lee Khai Ern, Mustapha Abd Talip and Rodeano Roslee

[+ Open abstract](#) [View article](#) [PDF](#)

Environmental Hazards

OPEN ACCESS

012006

Distribution and Accumulation of Heavy Metals in Marine Sediment from Marudu Bay, Sabah

Baba Musta, Dg. Azemah Ag. Mamun, Rahman Yaccup, Fuei Pien Chee, Muhammad Shafie Yusop and Darmesah Gabda

[+ Open abstract](#) [View article](#) [PDF](#)

OPEN ACCESS

012007

The Conformation and Thermal Characteristic Of Different Species Of Bamboo Cellulose

Siti Ayu Aziz, Sabrina Soloi, Hidayati Asrah, Juferi Idris and Mohd Sani Sarjadi

[+ Open abstract](#) [View article](#) [PDF](#)

OPEN ACCESS

012008

Enhanced Mechanical Properties Plaster of Paris with Addition of Rice Husk Fibers

Farmizan Pirman and Asmahani Awang

[+ Open abstract](#) [View article](#) [PDF](#)

OPEN ACCESS

012009

Preliminary Screening and Comparison of Heavy Metal Pollution in Two Malaysia Class II River Using Acetylcholinesterase from *Monopterus Albus*

Siti Aishah Muhammad Khalidi, Mohd Khalizan Sabullah, Rahmath Abdullah, Diana Demiyah Mohd Hamdan, Siti Aqlima Ahmad and dan Mohd Yunus Shukor

[+ Open abstract](#) [View article](#) [PDF](#)

OPEN ACCESS

012010

A preliminary study on public perceptions of hydrogen energy in Sarawak

This site uses cookies. By continuing to use this site you agree to our use of cookies. To find out more, see our privacy and cookies policy.



[+ Open abstract](#) [View article](#) [PDF](#)

OPEN ACCESS

012011

Modelling of Coastal Vulnerability Index Along the East Coast of Peninsular Malaysia due to Sea Level Rise Impact

I Ismail, M L Husain, W S W Abdullah and R Zakaria

[+ Open abstract](#) [View article](#) [PDF](#)

OPEN ACCESS

012012

Mass Balance and Dissolved Metal Loads in the Mamut Copper Mine Temporary Settling Pond

Feona Isidore, Fera Cleophas, Chin Yik Lin, Anand Nainar and Kawi Bidin

[+ Open abstract](#) [View article](#) [PDF](#)

OPEN ACCESS

012013

Wave Attenuation and Root Density Analysis of *Bruguiera Parviflora* at Larut Matang, Perak

I Ismail, M L Husain and R Zakaria

[+ Open abstract](#) [View article](#) [PDF](#)

OPEN ACCESS

012014

Mining The Microbiome: A Mini Review on Natural Products Discovery from Soil

Suraya Abdul Sani, Joyce Paul, Dayang Iman Maisarah Abang Sulaiman, Akid Md Haris, Ainol Azifa Mohd Faik and Rahmath Abdulla

[+ Open abstract](#) [View article](#) [PDF](#)

OPEN ACCESS

012015

Identification of Arsenic Accumulator from Traditional Upland Rice Genotypes: A Field Survey in Interior Division, North Borneo

D D M Hamdan, J Seludin, F Musa, M K Sabullah and S A Rahim

[+ Open abstract](#) [View article](#) [PDF](#)

OPEN ACCESS

012016

Hydrology of Acidic Mine Pit Lake: A Case Study of ex-Copper mine Pit Lake, Mamut, Sabah Malaysia.

F Cleophas, F Isidore, B Musta and K Bidin

[+ Open abstract](#) [View article](#) [PDF](#)

OPEN ACCESS

012017

Mapping the Groundwater Potential Areas by Using the GIS Method in Kg Samawang, Sandakan, Sabah, Malaysia.

This site uses cookies. By continuing to use this site you agree to our use of cookies. To find out more, see our Privacy and Cookies policy.



[+ Open abstract](#) [View article](#) [PDF](#)

OPEN ACCESS

012018

Assessment of Carbon Stock at Oil Palm Plantation in Klias Peninsular West Coast of Sabah

S N M Zamri, H Saleh, S Abd Rahim and B Musta

[+ Open abstract](#) [View article](#) [PDF](#)

OPEN ACCESS

012019

A microbial technology approach using bioleaching for low grade metals extraction - a review

S A Sani and A M Haris

[+ Open abstract](#) [View article](#) [PDF](#)

OPEN ACCESS

012020

Composition and surface morphology study of seaweed as biosorbent

Nazirah Mingu, Noorsharmeza Musa, Mohd Hafiz Abd Majid, Juferi Idris and Mohd Sani Sarjadi

[+ Open abstract](#) [View article](#) [PDF](#)

OPEN ACCESS

012021

Mapping the Groundwater Potential Zones in Kota Belud, Sabah and its surrounding areas by using the Geographical Information System (GIS) and Remote Sensing Techniques

Zulherry Isnain and Baba Musta

[+ Open abstract](#) [View article](#) [PDF](#)

OPEN ACCESS

012022

Agrowastes of banana peels as an eco-friendly feedstock for the production of biofuels using immobilized yeast cells

R Abdulla, Q Johnny, R Jawan and S A Sani

[+ Open abstract](#) [View article](#) [PDF](#)

OPEN ACCESS

012023

A Review on Food Security Policy on Agriculture and Food in Sabah, Malaysia

Suraya Abdul Sani, Noor Dzuhaidah Osman, Erni Marlina Saari and Wan Abdul Rahman Wan Idrus

[+ Open abstract](#) [View article](#) [PDF](#)

OPEN ACCESS

012024

Characterization of wild type yeast isolated from Sabah soil for environmental friendly biofuel production

R Abdulla, N H Ahmad, M K Sabullah and J A Gansau

[+ Open abstract](#) [View article](#) [PDF](#)

This site uses cookies. By continuing to use this site you agree to our use of cookies. To find out more, see our Privacy and Cookies policy.



Geological Hazards

-
- OPEN ACCESS** 012025
Some mechanical characterization of the Sandakan formation's sandstone, Sabah, Malaysia
R Moneey, I A Rahim and B Musta
[+ Open abstract](#) [View article](#) [PDF](#)
-
- OPEN ACCESS** 012026
Liquefaction Resistance of Sand-Kaolin Mixtures: Effect of Sand Sizes
B.A. Othman, A. Marto, R. Uzuoka, K. Ueda and M.H. Mohd Satar
[+ Open abstract](#) [View article](#) [PDF](#)
-
- OPEN ACCESS** 012027
Earthquake Threats in Ranau – From The Sources of Mensaban and Mesilou Fault
Ahmad Khairut Termizi, Felix Tongkul, Noor Sheena Herayani Harith and Rodeano Roslee
[+ Open abstract](#) [View article](#) [PDF](#)
-
- OPEN ACCESS** 012028
3D Modelling of Rockfall Hazard at Gunung Lang, Ipoh
Muhammad Fahmi Abdul Ghani, Norbert Simon, Tuan Rusli Tuan Mohamed and Rodeano Roslee
[+ Open abstract](#) [View article](#) [PDF](#)
-
- OPEN ACCESS** 012029
Fuzzy Interpolation Curve Modelling of Earthquake Magnitude Data
R Zakaria, A N Jifrin, S N Jaman and R Roslee
[+ Open abstract](#) [View article](#) [PDF](#)
-
- OPEN ACCESS** 012030
Settlement behaviour of geothermal energy pile under cyclic thermo-axial loads
M H Mohd Satar, A Marto and B A Othman
[+ Open abstract](#) [View article](#) [PDF](#)
-
- OPEN ACCESS** 012031
Application of Analytical Hierarchy Process (AHP) for Landslide Hazard Analysis (LHA) in Kota Kinabalu area, Sabah, Malaysia
Rodeano Roslee, Kamilia Sharir, Goh Thian Lai, Norbert Simon, Lee Khai Ern, Eldawaty Madran and Ahmad Syazwan Saidin
[+ Open abstract](#) [View article](#) [PDF](#)

This site uses cookies. By continuing to use this site you agree to our use of cookies. To find out more, see our [Privacy and Cookies policy](#).

OPEN ACCESS Correlation of Dynamic and Static Young's Modulus for Limestone

012032 

Ailie Sofyiana Serasa, Abdul Ghani Rafek, Wan Salmi Wan Harun, Muslim Abdurrahman, Lee Khai Ern, Nguyen Xuan Huy, Tran Van Xuan, Rodeano Roslee, Mingwei Zhang and Goh Thian Lai

[+ Open abstract](#) [View article](#) [PDF](#)

OPEN ACCESS

012033

Rock Endpoints and Barriers Estimation of Slope Failure in Pinousuk Gravel Slopes using Rocfall Simulation

H F W S Erfen and B Musta

[+ Open abstract](#) [View article](#) [PDF](#)

OPEN ACCESS

012034

Beach erosion: Threat and adaptation measures of communities in the Tun Mustapha Park (TMP), Sabah, Malaysia

E Saleh, G Jolis, N F Osman, J Sentian, J Joseph, J Jomitol and N Adin

[+ Open abstract](#) [View article](#) [PDF](#)

OPEN ACCESS

012035

Engineering Geological Assessment at Grandview Heights, Paya Terubong, Pulau Pinang, Malaysia

Nazlin An'Nisa Md Shah, Abdul Ghani Rafek, Ailie Sofyiana Serasa, Wan Salmi Wan Harun, Muslim Abdurrahman, Lee Khai Ern, Nguyen Xuan Huy, Tran Van Xuan, Rodeano Roslee, Mingwei Zhang *et al*

[+ Open abstract](#) [View article](#) [PDF](#)

OPEN ACCESS

012036

Buffer Zone Prediction for Simulated Earthquake-Induced Slope Failures in Mesilou, Kundasang, Sabah, Malaysia

H F W S Erfen and B Musta

[+ Open abstract](#) [View article](#) [PDF](#)

OPEN ACCESS

012037

Soil erosion risk under climate change scenarios: A case study in rural area with varying land uses

J Sentian, C Payus M, F Herman and S K S Kai

[+ Open abstract](#) [View article](#) [PDF](#)

OPEN ACCESS

012038

Debris flow susceptibility analysis using a bivariate statistical analysis in the Panataran River, Kg Melangkap, Sabah, Malaysia

Kamilia Sharir, Goh Thian Lai, Norbert Simon, Lee Khai Ern, Eldawaty Madran and Rodeano Roslee

[+ Open abstract](#) [View article](#) [PDF](#)

This site uses cookies. By continuing to use this site you agree to our use of cookies. To find out more, [View our Privacy and Cookies policy.](#)

012039

Developing the Earthquake Early Warning and Evacuation Systems (EEWES) for Schools in Ranau District

Syed Nasirin and Suraya Miskon

[+ Open abstract](#) [View article](#) [PDF](#)

OPEN ACCESS

012040

Applying Fuzzy Contrast Enhancement on Earthquake Impact Images

Suzelawati Zenian and Rodeano Roslee

[+ Open abstract](#) [View article](#) [PDF](#)

OPEN ACCESS

012041

Nowcasting Earthquake Occurrence in Sabah

Su Na Chin, Tongkul Felix, Zaturrawiah A. Omar and Roslee Rodeano

[+ Open abstract](#) [View article](#) [PDF](#)

OPEN ACCESS

012042

Seismic Interpretation and Reservoir Static Model: A Case Study in Block MFK, Riau Province, Indonesia

Ahmad Khairul Azmi, Abdul Ghani Rafek, Ailie Sofyiana Serasa, Wan Salmi Wan Harun, Muslim Abdurrahman, Lee Khai Ern, Nguyen Xuan Huy, Tran Van Xuan, Rodeano Roslee, Goh Thian Lai *et al*

[+ Open abstract](#) [View article](#) [PDF](#)

JOURNAL LINKS

[Journal home](#)

[Journal scope](#)

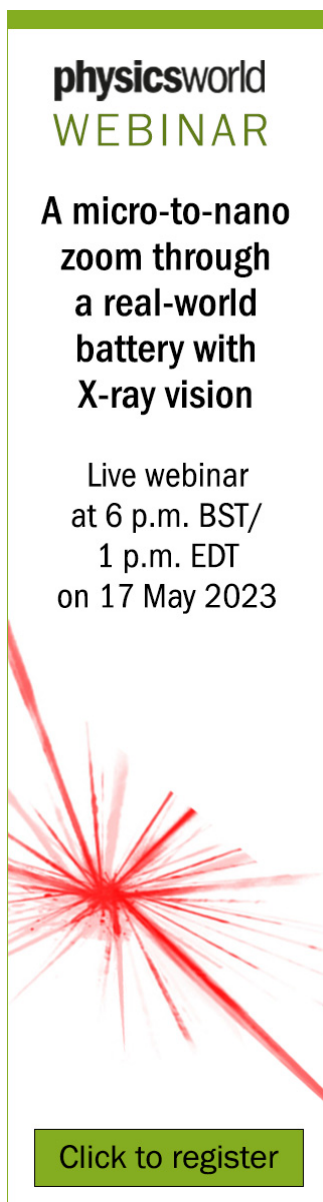
[Information for organizers](#)

[Information for authors](#)

[Contact us](#)

[Reprint services from Curran Associates](#)

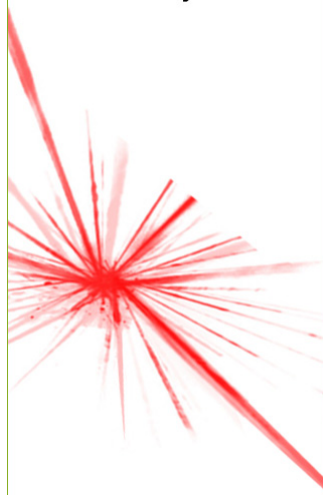




physicsworld
WEBINAR

**A micro-to-nano
zoom through
a real-world
battery with
X-ray vision**

Live webinar
at 6 p.m. BST/
1 p.m. EDT
on 17 May 2023



[Click to register](#)

This site uses cookies. By continuing to use this site you agree to our use of cookies. To find out more, see our Privacy and Cookies policy.



PAPER • OPEN ACCESS

Seismic Interpretation and Reservoir Static Model: A Case Study in Block MFK, Riau Province, Indonesia

To cite this article: Ahmad Khairul Azmi *et al* 2022 *IOP Conf. Ser.: Earth Environ. Sci.* **1103** 012042

View the [article online](#) for updates and enhancements.

You may also like

- [Simulation of non-stationary two-phase mass transfer in a large reservoir](#)
A V Rakhuba and M V Shmakova
- [Effect of a modified reservoir on the nature of interference in the spontaneous emission of a driven four-level atom](#)
S Roshan Entezar, H Vahed and H Tajalli
- [Numerical Simulation for Natural State of Two-Phase Liquid Dominated Geothermal Reservoir with Steam Cap Underlying Brine Reservoir](#)
Heru Berian Pratama and Nenny Miryani Saptadji



ECS The Electrochemical Society
Advancing solid state & electrochemical science & technology

243rd Meeting with SOFC-XVIII

Boston, MA • May 28 – June 2, 2023

Accelerate scientific discovery!

Learn More & Register

Seismic Interpretation and Reservoir Static Model: A Case Study in Block MFK, Riau Province, Indonesia

Ahmad Khairul Azmi¹, Abdul Ghani Rafek², Ailie Sofyiana Serasa³, Wan Salmi Wan Harun⁴, Muslim Abdurrahman⁵, Lee Khai Ern⁶, Nguyen Xuan Huy⁷, Tran Van Xuan⁷, Rodeano Roslee^{8,9}, Goh Thian Lai^{1,8,10*}, Mingwei Zhang¹⁰, Muhammad Yasin Abdul Fatah¹¹, Ivan Evriza¹¹ and Dimas Hadi Prabowo¹¹

*Corresponding author e-mail: gdsbgoh@gmail.com

¹Department Of Earth Sciences and Environment, Faculty Of Science & Technology, Universiti Kebangsaan Malaysia, 4360 UKMBangi, Selangor Darul Ehsan, Malaysia

²Engineering Geology Advisory, 11, SS21/12, Damansara Utama, 47400, Petaling Jaya, Slangor D. E., Malaysia

³School Of Engineering (Petroleum), Asia Pasific University Of Technology & Innovation (APU), Technology Park Malaysia, Bukit Jalil 57000, Kuala Lumpur, Malaysia

⁴Jabatan Mineral and Geosains Malaysia

⁵Department Of Petroleum Engineering, Universitas Islam Riau, Indonesia

⁶Institute for Environment and Development (LESTARI), Universiti Kebangsaan Malaysia

⁷Faculty Of Geology and Petroleum Engineering, Ho Chi Minh University Of Technology, VNU-HCM, 268 Ly Thuong Kiet Street, District 10, Ho Chi Minh City 700000, Vietnam

⁸Natural Disaster Research Center(NDRC), Universiti Malaysia Sabah, 88400 Kota Kinabalu, Sabah, Malaysia

⁹Faculty of Sciences and Natural Resources (FSSA), Universiti Malaysia Sabah, 88400 Kota Kinabalu, Sabah, Malaysia

¹⁰State key Laboratory for Geomechanics and Deep Underground Engineering, China University of Mining and Technology, Xuzhou 221116, China

¹¹SPR Langgak

Abstract. MFK Block was located between Kampar and Rokan Hulu, Riau Province and 135 from Pekanbaru City, Indonesia. There are 33 wells in Field X, MFK Block with 27 active wells. This field has an area of about 79.65 km² that located in Central Sumatra Basin. The field was discovered in 1976 and began to be produced in January 1979. Our research is focused on AK reservoir intervals, which is also part of Bekasap formation. The main aims of this study are to interpret field structure model, determine the distribution of reservoir properties, develop static reservoir model for field as a reference for field performance enhancement, estimate oil reserves in the field reservoir, and the prospect of hydrocarbons in the AK reservoir. The available data are 2D seismic data, mudlog descriptions, well log data, and perforation data. The methods used in this study are stratigraphic sequences, electrofacies analysis, geological structure analysis, static reservoir modelling, and estimation of hydrocarbon reserve volumes. Based on mudlog



and electrofacies analysis, the study interval was arranged into 2 lithofacies units, namely sand channel and sand bar. The deposition environment of Bekasap Formation is estuarine environments. The interval of the study has an association of fasies moving northeast to southwest. Based on the results of property reservoir analysis, facies that have good reservoir quality is sand channel facies. Based on the static modeling method approach, the estimated stock tank oil initially in place (STOIP) for AK reservoir interval is 728 MBBL.

1. Introduction

Reservoir geological modeling plays an increasingly important role in determining distribution, depth configuration, and reservoir quality [1]. The construction of the reserbor model is a common model for geological horizons and faults that form geometric frames from three-dimensional grids and form boundaries of facies and petrophysical models representing the properties of rock [2]. The research field (Field X) has an area of about 79.65 km² located in Lembangan Central Sumatra. The field was discovered in 1976 and began to be produced in January 1979. This field reservoir is included in the formation of Bekasap with lithology that constituents are in the form of sandstone with glauconite content at the top and shale inserts, thin limestone and thin layers of coal with a depth of 1200 - 1300 feet. Geographically, the research field is located on the MFK block between Kampar and Rokan Hulu Regency, Riau Province. So far there are 33 wells in Field X, MFK Block with 27 active wells.

Several recent studies of resrvoir static model in this area. In 2018, volumetric calculations are carried out using the water contact boundary with the degraded hydrocarbons and obtained hydrocarbon volume in this field with a total of more than 34 million barrels [3]. This field located 135 kilometers from Pekanbaru City (Figure 1).

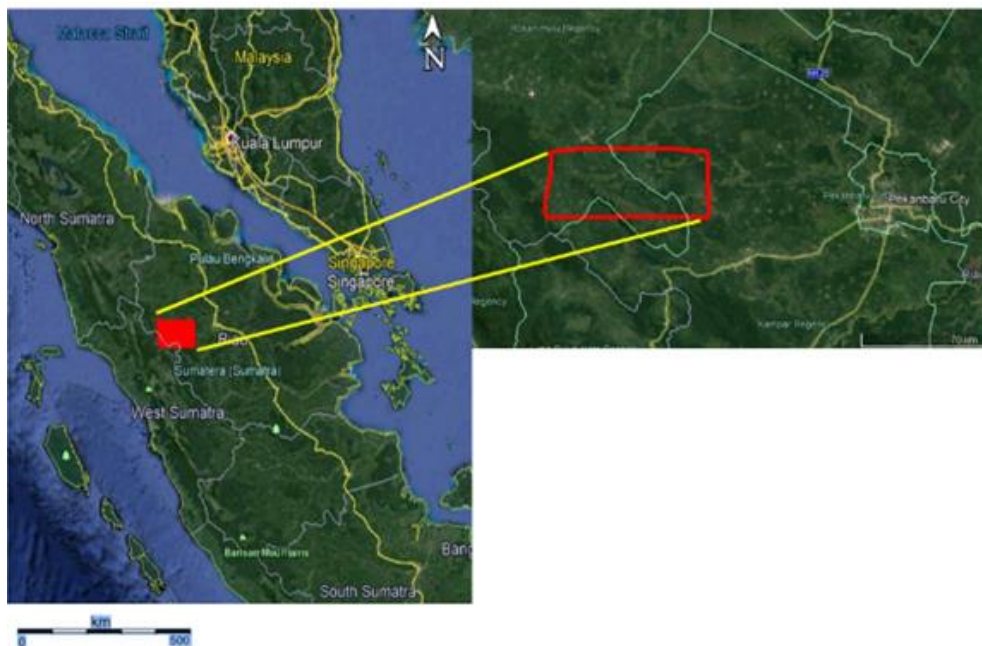


Figure 1. The goggle earth view of the study field

The objectives of this paper are (i) Interpreting field of the structure model and distribution of reservoir properties, (ii) Develop a static model of reservoir for field as a reference for improved field performance and (iii) Estimating oil reserves in reservoirs on field. The research will focus on the construction of static models in the field as well as the distribution of fasies and distribution of reservoir properties. At the end of this study, it will be determined which areas have the potential for future field development.

2. Geological Setting of the Study Area

The Field X is one of the oil fields located between Kampar regency and Rokan Hulu, Riau Province, Central Sumatra' Lembangan (Figure 2). The Central Sumatran Development is a back arc that develops along the edge of the Sunda Stage in southwest Southeast Asia [4]. The southwestern part of Central Sumatra's Lembangan is bounded by Bukit Barisan, while the northwestern part is bounded by the Tigapuluh High court and the northeastern part is also bounded by the Sunda Palace.

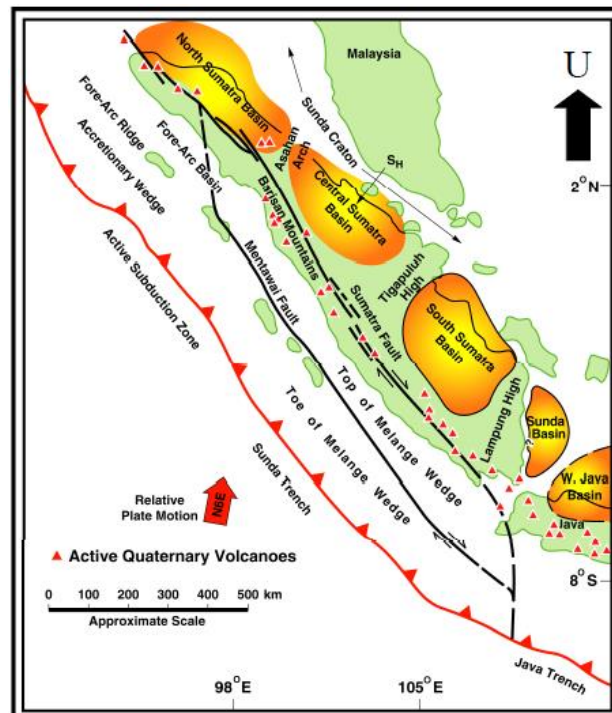


Figure 2. The location of the study area.

The tectonics of the Central Sumatra Balance are characterized by fault blocks and front faults, such as as ascension, gravity tectonics, windings and compressed folds. The system of fault blocks has a North-South alignment orientation to form a series of horst and graben. There are two main structural patterns in this development, namely the old pattern that tends to the North-South while the younger pattern also tends towards the Northwest-Southeast [5].

3. Material and Methods

In this study, to produce a static model of the reservoir, well data processing consisting of mudlog analysis, stratigraphic sequence analysis, electrofacies analysis that can determine the deposition environment of the research area as modeling inputs. For seismic data processing, the binding of well data with seismic is done first before picking faults and picking horizons. Using Petrel software, the distribution of fasies and the distribution of petrophysical properties from the reservoir. Figure 3 shows the flow of work in this study.

3.1 Determination of Deposition Environment

The analyses used for the determination of the deposition environment are mudlog analysis, stratigraphic siquence analysis and electrofacies analysis. External data such as mudlog data (data from sludge used for drilling) are required to strengthen fasies analysis [6]. Stratigraphic sequence analysis is an attempt to connect the correlative sequence and aligned (there are no misalignments in between) despite their

different lithologies or constituent facies. The interpretation of electrofacies refers to the gamma ray log pattern reaction (GR) model proposed by [7]. Gamma log responses to variations in detailed measurements characterize sedimentary relationships in certain deposition environments [7]. By integrating data from mudlog data, lithology, jujukan, stratigraphy and electrofacies will be obtained certain deposition environments in the research area.

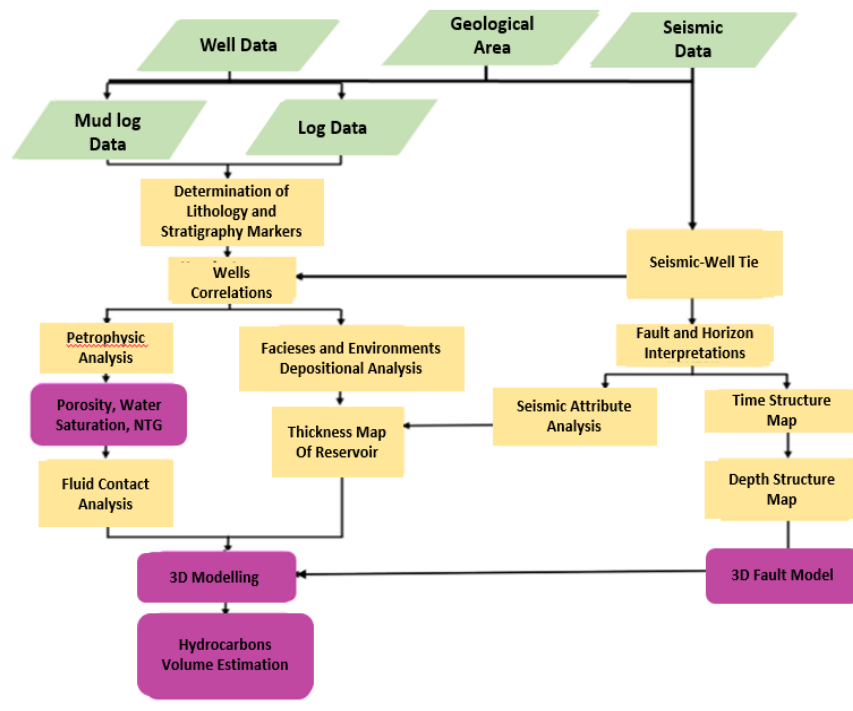


Figure 3. Research Workflow for this study

3.2 Petrophysics Analysis

Petrophysics analysis is performed to determine reservoir properties by analyzing vshale values, effective porosity, and water saturation. Vshale analysis is used to calculate layers that have shale inserts that can affect the results of the analysis of porosity and saturation of water using equations:

$$Vsh = \frac{(GR\ read - GR\ min)}{(GR\ max - GR\ min)} \tag{1}$$

Where,

- Vsh = volume of shale (%)
- GR read = reading of gamma ray values on logs (GAPI)
- GR max = maximum gamma ray value (shale)(GAPI)
- GR min = minimum gamma ray value (sand)(GAPI)

Determination of porosity is done using the Bateman-Konen equation where density log (DPHI) and neutron log (NPHI) data as raw data. With a formula for determining porosity [8] :

$$\phi N = \sqrt{(\phi N^2 + \phi D^2)} \div 2 \tag{2}$$

Where,

- ϕ_N =neutron porosity
- ϕ_D =density-porosity
- ϕ_{ND} = neutron-density porosity (Bateman-Konen)

Water saturation is the ratio of the contents of stone pores filled with the number of pores in porous rocks. In the water saturation ratio, water attached to the shale surface is not included in the calculation. Therefore, it is necessary to correct the volume of the scarf before calculating the saturation of water. Water saturation plays an important role in petrophysical analysis because it can determine hydrocarbon saturation. The general formula used using equations [8] is as follows:

$$S_w = \frac{(a \times R_w)}{(\phi_n \times R_t)} N^{-1} \times 100\% \tag{3}$$

Where,

- S_w = water saturation (%)
- a = turtosity factor
- m = cementation factor
- n = Exponent of saturation

3.3 Seismic Analysis

Identification of geological features such as large and small faults is carried out on seismic parts. Well tie to Seismic is done using AK-1, AK-2 and AK-6 well data and checkshot surveys from Ak-1 to produce a synthetic seismogram, hence, tying the seismic to wells (Figure4).

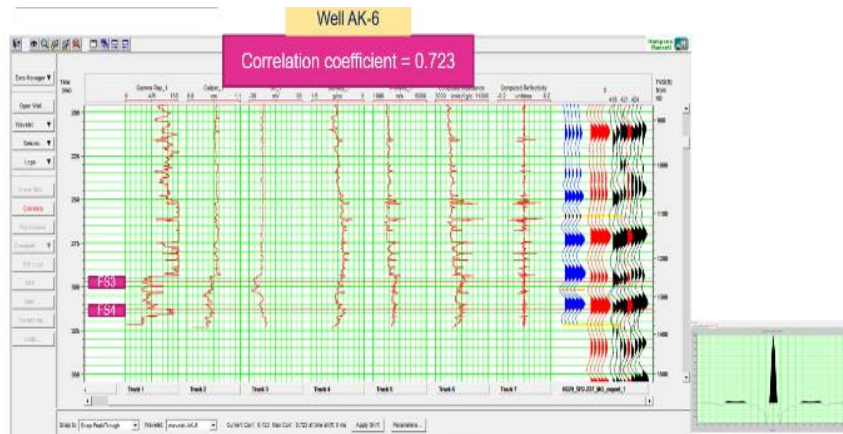


Figure 4. Seismic Well Tie

From seismic data obtained faults that are northwest-southeast after picking faults. Picking horizons are carried out at intervals of research areas with the final result being a map of the depth structure.

3.4 Volumetric Calculation

Reservoir volume is a process by which the quantity of hydrocarbons in the reservoir is estimated. This is very important because it serves as a guide for field exploration and expansion. Once the field static model is completed, the built petrophysical structure and model model is used to calculate the reserve in terms of on-site oil stock tank (STOOIP) Field X, estimated using the equation:

$$STOIIIP (STB) = 7758 \times A \times h \times \Phi \times (1 - S_w) \times \frac{1}{B_o} \tag{4}$$

Where,

- A = An acre area, Acre-foot
- H = feet thickness clean in foot unit
- Φ = porosity
- S_w = water saturation
- B_0 = Formation Volume Factor

4. Results

There are 3 scopes of work carried out on this study which are included well data analysis, seismic data analysis and the creation of a 3D static model framework.

4.1 Well Data Analysis

The first stage carried out in the work of this study is mudlog analysis where two lithofacies codes are obtained from mudlog descriptions namely smc (medium to coarse sand) and svtfm (very fine to medium sand) (Figure 5). Based on the analysis of stratigraphic elbows on wells in the research field, 2 dominant track systems, namely lowstand system track and highstand system track were identified. The direction of the estuarine channel form on the correlation of stratigraphic sequence are north-south (Figure 6). In the field of research there are two dominant types of logs, namely funnel shape and cylindrical shape that shows this area is deposited in the environment of sand bar and channel sand. By integrating data from the analysis of cutting mudlog, lithology, stratigraphy sequence and electrofacies, it can be concluded that the research interval is deposited in the lower Estuarine or Marine Energy Dominated Estuarine environment with the sub-deposition environment, the Estuarine Channel.

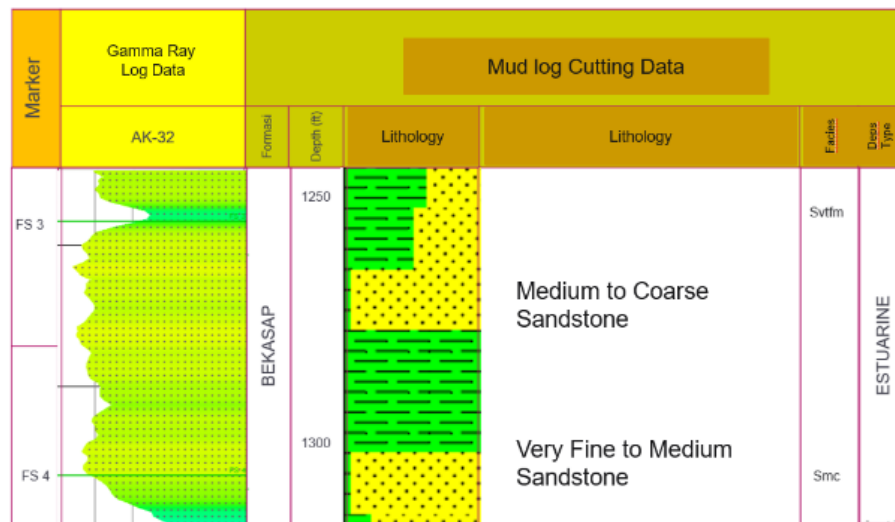


Figure 5. Mudlog Analysis

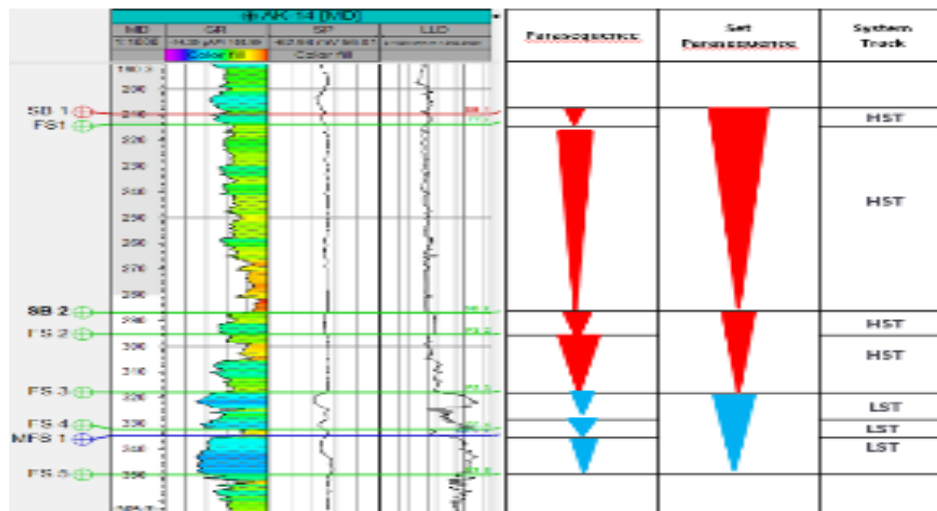


Figure 6. Stratigraphic Sequence Analysis

4.2 Seismic Data Analysis

Seismic data analysis begins with the seismic-well tie which is compressed by a good correlation coefficient value of 0.723. After that, a picking fault is carried out in the research area which is then continued with a picking horizon that produces a map of the time structure. Data conversion over time to depth is done for analysis of modeling data in the depth domain. Figure 7 shows the results of the creation of a map of the depth structure.

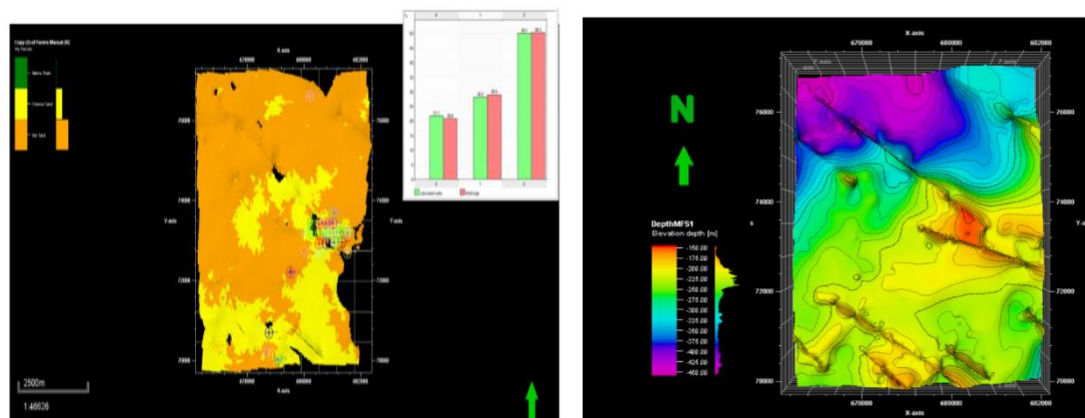


Figure 7. Depth Structure Map

4.3 3D Static Modeling

The static modeling process of the reservoir begins by making a fault model resulting from seismic interpretation which then continues with the creation of 3D pillar gridding (Figure 8). Then the creation of layer and zone models as a modeling reference.

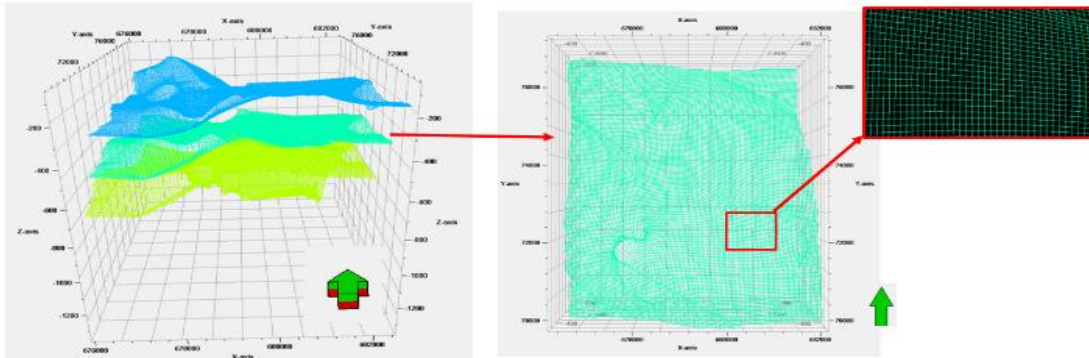


Figure 8. Pillar Gridding

The process of scale up well log is carried out for the alignment of well log values vertically in each cell by entering well analysis data into the 3D grid model. Figure 9 shows the results of scale up well log.

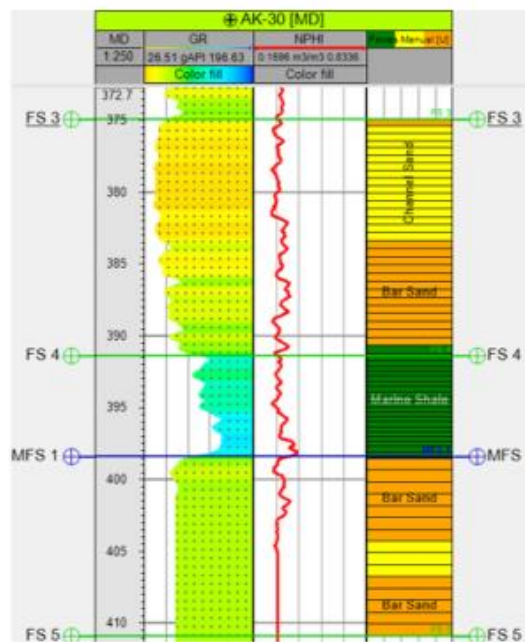


Figure 9. Log upscaling result at Well AK-30

The process of modeling facies is done using sequential indicator simulation methods. Avariogram analysis on data analysis is also used to disseminate data at a certain distance so that there is no change in value (Figure 10).

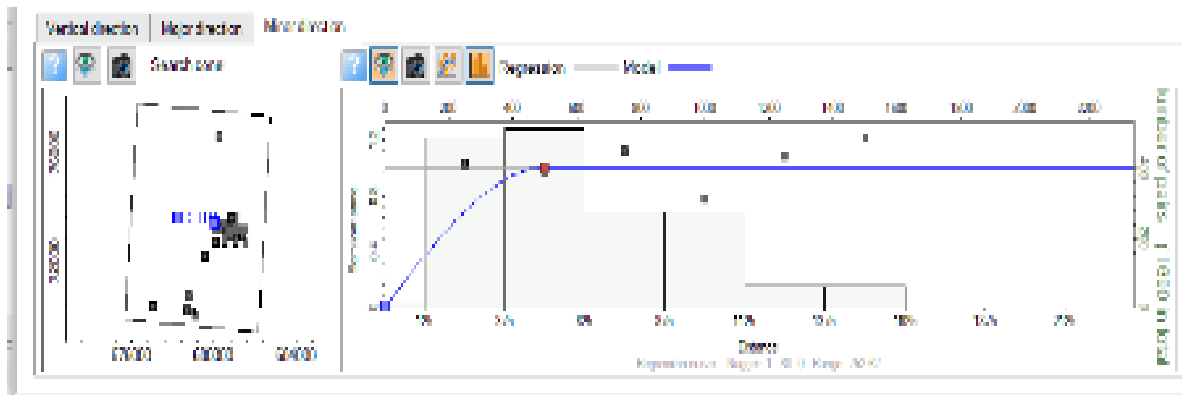


Figure 10. Facies Modelling and Variogram Analysis

Petrophysical property modeling includes Vshale modeling, porosity and water saturation. Porosity logs and SW logs that have been scaled up become basic inputs in reservoir modeling. Variogram analysis on analytical data is also used to disseminate petrophysical property data. Figure 11 shows the results of petrophysical property modeling

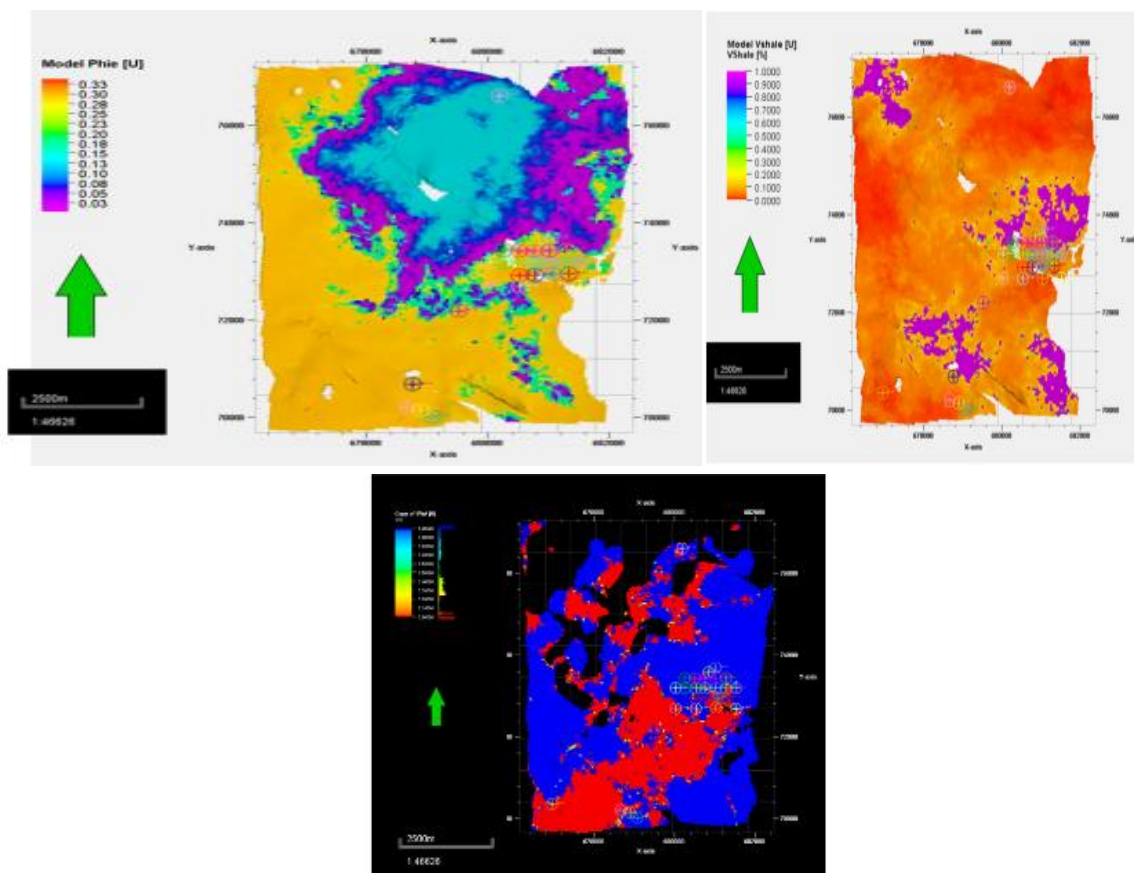


Figure 11. Petrophysical Property Modeling

4.4 Volumetric Calculation

Table 1 reveals volumetrics after modeling. It was found that the Stock Tank Original Oil in Place (STOOIP) at the research interval is amounted to 728 MSTB.

Table 1. Volumetric Calculation

Interval Research	BV (acre. ft)	PV (acre. ft)	STOOIP (MSTB)
Reservoir 1.1	529	423	296
Reservoir 1.2	949	760	532
Total	1478	1183	728

5. Discussion

Determination of the deposition environment is required for static modeling data input. From the analysis of mudlog data, stratigraphic sequence and electrofacies analysis found that the research area is deposited in the estuarine channel environment.

A depth structure contour map shows a fault growth system oriented toward the Northwest- Southeast that is interpreted as a fault formed in late Neogen.

The static modeling process begins with a fault model resulting from seismic interpretation which then continues with the creation of a 3D pillar gridding consisting of cells at the top, middle, and bottom. This pillar gridding will be the basis of the spread of the reservoir property. Then the creation of horizon modeling results from the interpretation of layers in seismic. The next stage is to create zoning with well marker input from log analysis. The last process is layering model, the thickness of this layer will be affected by the thickness of facies. In the stages of reservoir modeling there are four processes, namely scale up well log, facies modeling, Vshale modeling, porosity modeling and water saturation modeling. Validation of the results of scale up well logs is done by looking at the difference between the histogram of log data and the results of scale ups. Facies modeling is done using the Sequential Indicator Simulation deployment method where the variogram analysis is used as a controller of the spread, so that at a certain distance there is no change in value with vertical, major, and minor axis orientation. Reservoir property modeling is closely related to STOOIP calculations. Porosity logs and SW logs that have been scaled up become basic inputs in reservoir modeling. Variogram analysis on analytical data is also used to disseminate reservoir property data. The process of porosity modeling is controlled by the facies model and SW modeling is controlled by the porosity model. Spreading properties using the Sequential Gaussian Simulation deployment method. This method is chosen because the properties of the reservoir are continuous variables so that they are suitable for use in the SGS method. The distribution of reservoir properties from 3D static modeling shows that the reservoir distribution follows the direction of the facies association which is in the northeast-southwest and the next development direction is in the southeastern part of the model.

All variables in hydrocarbon volume equations have been obtained from previous data analysis. The calculation result will be obtained in bulk (acre.ft) which is the total number of zones restricted by fluid contacts. In addition, the clean volume (acre.ft) is the volume of the area above the touch of fluid. The next calculation is STOOIP or stock tank initial oil in place by dividing between the value of HCPV and the formation factor. Stoiip was generated at research intervals of 728 MSTB.

6. Conclusions

3D static modeling begins with cesarean modeling. Rather than fault modeling, the fault resulted in a dominant fault toward the Northwest – Southeast which was interpreted as a fault that formed in the late neogene period. The sprinkling of reservoir properties from 3D static modeling shows that the reservoir sprinkles follow the direction of the facies association, which is in the northeast-southwest and the next direction of expansion is in the southeastern part of the model. Based on the calculation of hydrocarbon

reserves using the volumetric method, the research area has an estimated total hydrocarbon storage (STOIP) of 728 MBB1, with details for the reservoir zone 1.1 of 296 MSTB, and a reservoir zone of 1.2 of 532 MSTB. The calculation of the amount of hydrocarbons per horizon will differ due to the fluid contact factor.

7. Acknowledgements

This research was supported by Fundamental Research Grant Scheme FRGS/1/2020/WAB07/UKM/02/2. The authors wish to thank the lab staff of the Geology Programme, Universiti Kebangsaan Malaysia. This publication also was supported by Open Fund Project (SKLGDUEK2012 and ST-2020-010) of State Key Laboratory for Geomechanics & Deep Underground Engineering of China University of Mining and Technology / China University of Mining and Technology (Beijing).

8. References

- [1] Jianpeng, P., Qingbin L., Wenling L., Yuyang L., Xiaodong C., & P., Mao. 2020. 3D Reservoir Geological Modeling Algorithm Based on a Deep Feedforward Neural Network: A Case Study of the Delta Reservoir of Upper Urho Formation in the X Area of Karamay, Xinjiang, China.
- [2] Rahimi, M., & M.A., Riahi. 2020. Static reservoir modeling using geostatistics method: a case study of the Sarvak Formation in an offshore oilfield. *Carbonates and Evaporites* 35, 62.
- [3] Fandy, F. 2018. Three-Dimensional Modeling of Reservoirs for Calculation of Hydrocarbon Reserve Volume in Fandy Field Formation Menggala and Formation Pematang of Central Sumatra Basin. Fakultas Teknik. Universitas Diponegoro.
- [4] Heidrick, T. L. & Aulia, K. 1993. Regional structural geology of the Central Sumatra Basin, Petroleum Geology of Indonesian Basins. Pertamina BPPKA Indonesia, Pp.13-156
- [5] Mertosono, M.S. & Nayoan, G. A. S. 1974. The Tertiary Basinal Area of Central Sumatra. Indonesian Petroleum Association, Proceedings 3th Annual Convention. Jakarta. p. 63-76.
- [6] Iqbal Maulana. 2016. Petrophysics analysis and Calculation of Lapanagan Reserve "Kaprasida" Of South Sumataera Baturaja Formation. Surabaya: Institut Teknologi Sepuluh Nopember.
- [7] Kendall, C. G. St. C., Posamentier, H. W., Ross, C. A. dan Van Wagoner, J. C. 2003. Sea Level Changes: An Integrated Approach: Tulsa, OK. Society of Economic Paleontologists and Mineralogists, Special Publication No.42.
- [8] Asquith, G. B. dan Krygowski, D. (2004): Basic Well Log Analysis 2nd Edition, American Association of Petroleum Geologists (AAPG) Methods in Exploration Series no. 16, Oklahoma.

