

The male of *Strotarchus paradoxus* (Petrunkevitch, 1963) (Araneae: Cheiracanthiidae), a fossil spider from Chiapas, Mexico

El macho de *Strotarchus paradoxus* (Petrunkevitch, 1963) (Araneae: Cheiracanthiidae), una araña fósil de Chiapas, Mexico

 ¹MIGUEL ÁNGEL GARCÍA-VILLAFUERTE,  ^{2*}GUILLERMO IBARRA-NÚÑEZ

¹Maestría en Ciencias en Biodiversidad y Conservación de Ecosistemas Tropicales, Instituto de Ciencias Biológicas, Universidad de Ciencias y Artes de Chiapas. Libramiento Norte Poniente, Caleras Maciel, C.P. 29000, Tuxtla Gutiérrez, Chiapas, México.


²El Colegio de la Frontera Sur, Unidad Tapachula. Carretera Antigua Aeropuerto km. 2.5, C.P. 30700, Tapachula, Chiapas, México.



Acta Zoológica Mexicana (nueva serie)

Responsible editor: María Luisa Jiménez

*Corresponding author:

 Guillermo Ibarra-Núñez
gibarra@ecosur.mx

How to cite:

García-Villafuerte, M. A, Ibarra-Núñez, G. (2023) The male of *Strotarchus paradoxus* (Petrunkevitch, 1963) (Araneae: Cheiracanthiidae), a fossil spider from Chiapas, Mexico. New record for Mexico. *Acta Zoológica Mexicana (nueva serie)*, 39, 1–7. [10.21829/azm.2023.3912588](https://doi.org/10.21829/azm.2023.3912588)
elocation-id: e3912588

Received: 14 December 2022

Accepted: 17 March 2023

Published: 01 May 2023

ABSTRACT. The spider genus *Strotarchus* Simon, 1888 includes 18 extant species from the American continent (12 from Mexico). Additionally, two fossil species have been described for this genus, *Strotarchus paradoxus* (Petrunkevitch, 1963) from Mexican amber (Chiapas), and *Strotarchus heidti* Wunderlich, 1988 from Dominican Republic amber. From two pieces of amber from Chiapas, here we describe for the first time, the male of the fossil spider *S. paradoxus* previously known only by a female specimen preserved in amber from the same locality. Moreover, a diagnosis is proposed for this species based on the characteristics of the female described by Petrunkevitch (1963) and the male here described.

Key words: amber; middle Miocene; Simojovel; taxonomy



RESUMEN. El género de arañas *Strotarchus* Simon, 1888 incluye 18 especies actuales para el continente americano (12 de México). Adicionalmente, se han descrito dos especies fósiles de este género, *Strotarchus paradoxus* (Petrunkevitch, 1963) de ámbar de México (Chiapas), y *Strotarchus heidti* Wunderlich, 1988 de ámbar de la República Dominicana. A partir de dos piezas de ámbar de Chiapas, describimos aquí por primera vez, el macho de la araña fósil *S. paradoxus* conocida previamente solo por un ejemplar hembra preservado en ámbar de la misma localidad. Además, se propone una diagnosis para esta especie con base en las características de la hembra descrita por Petrunkevitch (1963) y del macho aquí descrito.

Palabras clave: ámbar; Mioceno medio; Simojovel; taxonomía

INTRODUCTION

Bonaldo *et al.* (2012) reviewed the taxonomy of the American species of the genus *Strotarchus* Simon, 1888 (Araneae: Cheiracanthiidae). Bonaldo *et al.* (2012) considered as diagnostic characters: “the male palp with an elongate cymbium, tegulum with widely fused retrolateral apophysis, without hyaline conductor; embolus with a large base, abruptly narrowed distally, with a distinct median process; female epigynum with an anterior atrium, forming a copulatory pocket, without conspicuous copulatory openings”. The taxonomic history and the controversial family placement of this genus was summarized by Bonaldo *et al.* (2012). Later, Ramírez (2014) transferred *Strotarchus* to Eutichuridae, but Ono & Ogata (2018) considered Eutichuridae a junior synonym of Cheiracanthidae. This genus encompasses 20 extant (World Spider Catalog, 2022) and two fossil species (Dunlop *et al.*, 2020). Among the extant species 18 are from the American continent (where 12 from Mexico) and two from Pakistan, these last considered as probably misplaced by Bonaldo *et al.* (2012). From a drawing of *Strotarchus vittatus* Dyal, 1935 (plate XVII, fig. 151) it is evident that the epigynum of this species (from Pakistan) does not correspond to the diagnosis of Bonaldo *et al.* (2012) for *Strotarchus*.

Strotarchus paradoxus (Petrunkevitch, 1963) was the first fossil species described for this genus, known only from a female specimen from Mexican amber (Chiapas) (about 22.8–23 million years old, Vega *et al.*, 2009; Serrano-Sánchez *et al.*, 2015). This species was described under the genus name *Mimeutychnus* Petrunkevitch, 1963, which is considered as a tentative junior synonym of *Strotarchus* by Dunlop *et al.* (2017). *Strotarchus heidti* Wunderlich, 1988, was the second fossil species described, known only from male specimens from Dominican Republic amber (about 20 million years old, Solórzano Kraemer, 2007). Here we describe for the first time the male of *S. paradoxus*, based on two adult male specimens, preserved in amber from Simojovel de Allende, Chiapas, Mexico and we propose a diagnosis for the species.

MATERIALS AND METHODS

The studied materials are two amber pieces of Miocene-Aquitania from Simojovel de Allende, Chiapas, Mexico. One of these pieces was acquired from an amber trader in San Cristóbal de Las Casas (Chiapas), and the mine of precedence is unknown, this is deposited at the Colección de Arácnidos, El Colegio de la Frontera Sur, Tapachula, Chiapas (ECOTAAR-Fos001). The second amber piece comes from the Montecristo mine in Simojovel de Allende and is deposited at the Museo de Paleontología “Eliseo Palacios Aguilera”, Secretaría de Medio Ambiente e Historia Natural, Tuxtla Gutiérrez, Chiapas (IHNFG-5892). To obtain the best possible views of each specimen, each piece was cut and submitted to sanding and polished using water sandpaper of

different degrees (500 SIC to 1500 SIC) and a liquid polisher (Braso ®) (García-Villafuerte, 2022). Photographs were obtained using a Cannon Eos Rebel SL3 mounted on a Zeiss Stemi 2000-C stereomicroscope, multiple focal plane images were stacked using Helicon Focus 6 software. Measurements were taken with an ocular micrometer on an Olympus SZX16 stereomicroscope and are noted in millimeters. Format of description follows Bonaldo *et al.* (2012) with modifications. Abbreviations: AC, aciniform gland spigots; aPLS, apical segment of posterolateral spinnerets; AME, anteromedian eyes; ALE, anterolateral eyes; ALS; anterolateral spinnerets; BEF, basal embolar fold; bPLS, basal segment of posterolateral spinnerets; Cy, cymbium; EA, embolar apex; EP, embolar process; PLE, posterolateral eyes; PLS, posterolateral spinnerets; PME, posteromedian eyes; PMS, posteromedian spinnerets; RTA, retrolateral tibial apophysis; T, tegulum; TA, tegular apophysis.

RESULTS

Family Cheiracanthiidae Wagner, 1887

Genus *Strotarchus* Simon, 1888

***Strotarchus paradoxus* (Petrunkevitch, 1963)**

Figures 1–14.

Mimeutyichurus paradoxus Petrunkevitch, 1963: 30, Plate 1, C; figures 93–109 (female holotype from Palo Blanco mine, 30 km NE Simojovel, Chiapas, Mexico, in University of California Museum of Paleontology No. 12726; not examined).

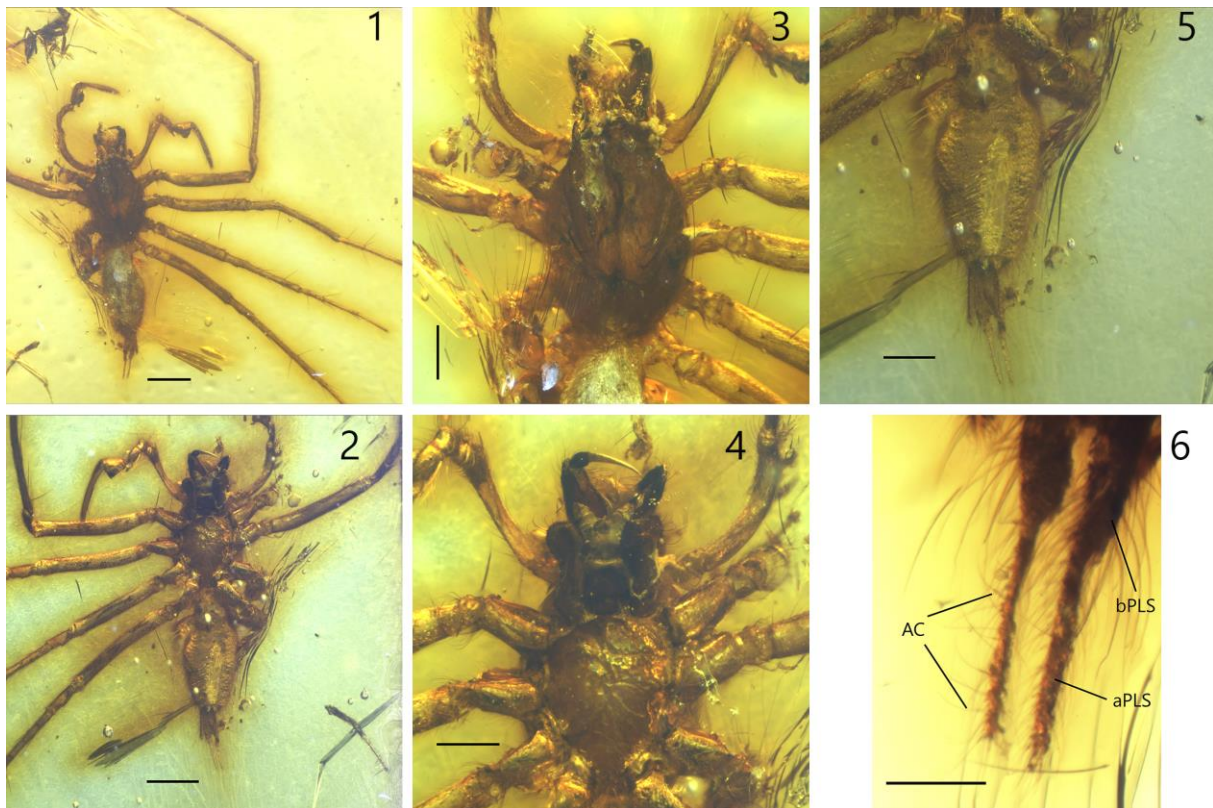
Strotarchus paradoxus: Dunlop *et al.* 2017: 181 (tentative synonymy).

Material examined: 1 male included in amber from Simojovel de Allende, Chiapas, Mexico, without data of mine (ECOTAAR-Fos001); 1 male included in amber from Montecristo mine in Simojovel de Allende, Chiapas, Mexico (IHNFG-5892).

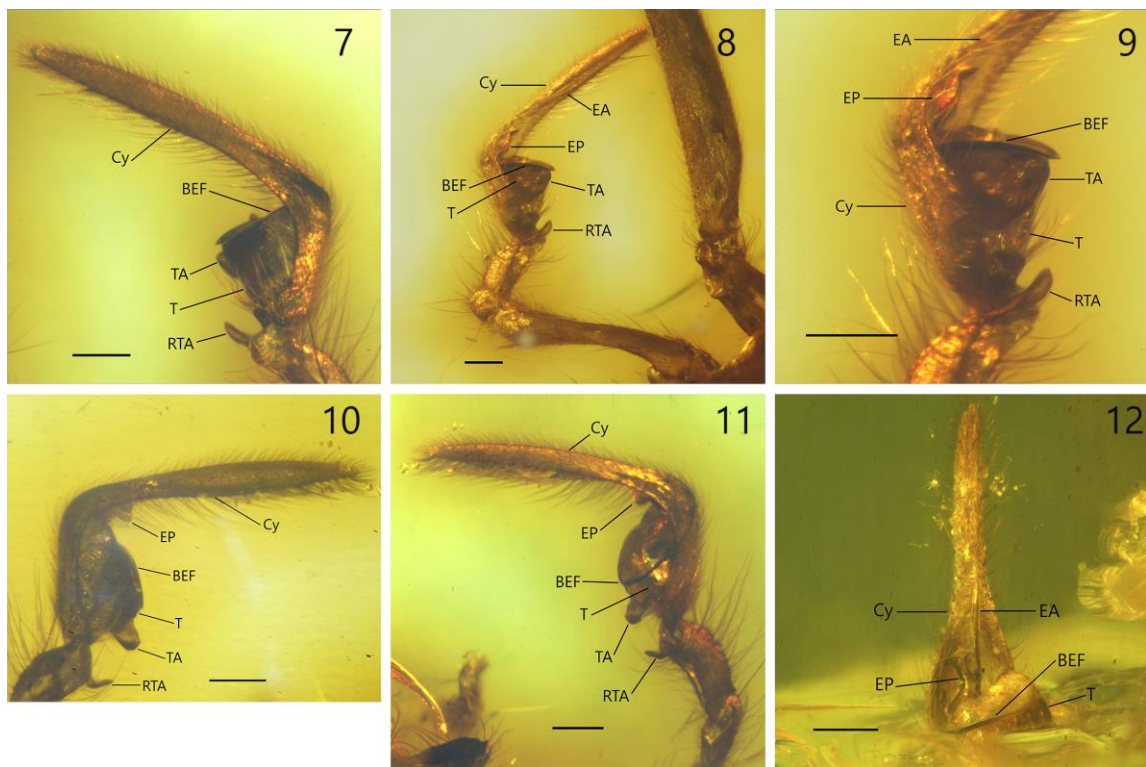
Diagnosis: The male and female of *S. paradoxus* differ from all other species by having a thin apical segment of the posterior lateral spinnerets (PLS), with a ratio long/wide of about 0.11 (female, fig. 97 in Petrunkevitch, 1963) to about 0.13 (male, Fig. 6), while in other species this ratio is higher, about 0.25 for the male of *S. heidti* (fig. 620 in Wunderlich, 1988), 0.40 for the female of *Strotarchus nebulosus* Simon, 1888 (plate 6, fig. 14c in F. O. Pickard-Cambridge, 1899), or 0.50 for both sexes of *Strotarchus piscatorius* (Hentz, 1847) (figs 43, 47 in Bonaldo *et al.*, 2012). Additionally, the male of *S. paradoxus* differs from all other species (with known male) by having an embolar process (EP) elongated, with a unique shape, wide at its base, slim at middle, and slightly widened at its apex (Figs. 9, 12, 14), and by having the palpal cymbium (Cy) bent 90°, with the dorsal border of the proximal part of the cymbium straight (Figs. 7–11, 13, 14), while in all other species (except *S. heidti*, fig. 621 in Wunderlich, 1988) this border is convex (see figures of male palps in Bonaldo *et al.*, 2012). Furthermore, the female of *S. paradoxus* differs from all other species by having an epigynum with a large atrium, occupying the anterior half of epigynum (fig. 103 in Petrunkevitch, 1963), while in other species (except *S. tlaloc* Bonaldo *et al.*, 2012) the atrium occupies less than half of the epigynum (see figures of female epigyna in Bonaldo *et al.*, 2012).

Description: Female. See description by Petrunkevitch (1963, page 30, under *Mimeutyichurus paradoxus*). Male (ECOTAAR-Fos001). The specimen is well preserved, but lacks left legs I, III, IV, and the distal part of leg II. It also has the carapace fractured on its left side, from its anterior border to the fovea, and the eyes are partially visible only on the right side (Fig. 1). Color description based on specimen preserved in amber: Carapace dark brown, with fovea darker. Chelicerae dark brown, with most of fang lighter. Labium and endites dark brown with white apex on labium. Legs dark yellow. Opisthosoma grey, venter dark yellow; spinnerets dark yellow with distal segment of PLS lighter (Figs. 1–6). Total length 4.40. Carapace 2.20 long, 1.35 wide. Eye

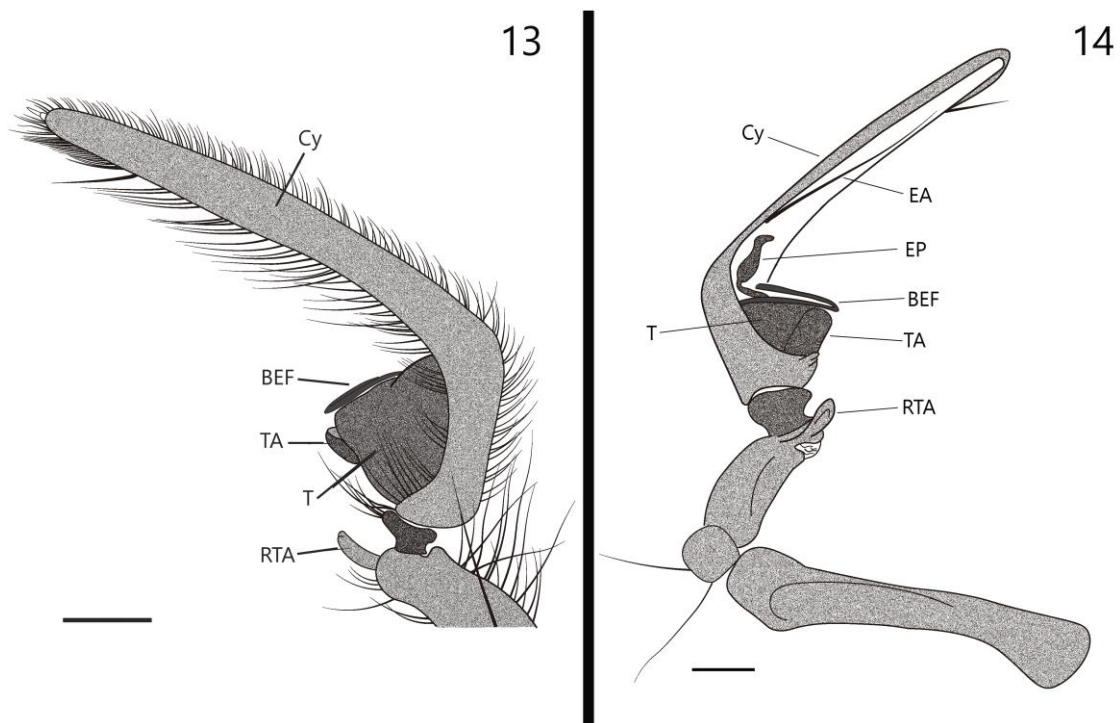
diameters: AME 0.09, ALE 0.09, PME 0.10, PLE 0.07. Teeth on chelicerae not visible. Leg measurements: femur I 2.10/ II 1.95/ III 1.75/ IV 2.20; tibia I 2.18/ II 1.68/ III 1.30/ IV 2.00; metatarsus I 2.08/ II 1.70/ III 1.58/ IV 2.30; tarsus I 0.95/ II 0.80/ III 0.68/ IV 0.93. Palpus measurements: femur 1.16, patella 0.31, tibia 0.35, cymbium 1.60. Spinnerets (Figs. 3, 6): anterior lateral spinnerets (ALS) two segmented, separated by about twice their basal diameter, 0.62 long (basal segment 0.56, apical 0.06); posterior median spinnerets (PMS) one-segmented, 0.40 long; PLS two segmented, 1.08 long (basal segment 0.62, apical 0.46), apical segment with visible aciniform gland spigots (AC in Fig. 6). Leg spination: I femur d1-1-1, p0-1-1; tibia d0-1-0, p1-1-0, r1-1-0, v2-2-0; metatarsus d0-1-0, p1-1-2, r1-1-1, v2-2-1m. II femur d1-1-1, p0-1-1; tibia d0-1-0, p0-1-1, r1-1-0, v2-2-0; metatarsus d0-1-0, p1-1-2, r1-0-2, v2-2-1m. III femur d1-1-1, p0-1-1-1, r0-0-1; tibia d0-1-0, p1-0-1, r1-0-1, v1-2-0; metatarsus d0-1-1-0, p1-1-2, r1-1-2, v2-2-1m. IV femur d1-1-1, p0-0-1, r0-0-1; tibia p1-1-0, r1-1-0, v1m-1m-2-0; metatarsus p1-1-2, r1-1-2, v2-2-1r. Palpal femur strongly arched ventrally (Fig. 1, left palpus), tibiae length about one third of the femur length (Fig. 1, right palpus); retrolateral tibial apophysis (RTA) long, spoon-shaped at its distal end (Figs. 7–11, 13, 14); apical lamella of RTA and prolateral process of RTA absent. Cymbium long, bent 90°, the dorsal border of the proximal part straight (Figs 7–11, 13, 14), its distal part slender, almost tubular, about two and a half the length of the wider, proximal part (Figs. 7, 8, 10, 11, 13, 14). Tegulum (T) large, occupying most of bulb (Figs. 7–11, 13, 14); tegular apophysis (TA) long, on retrolateral margin of T (Figs. 8, 9, 11, 14); basal embolar fold (BEF) narrow, traversing apical portion of T (Figs. 7–9, 11, 13, 14); embolar process (EP) about as long as RTA (Figs. 8, 9, 12, 14); embolar apex (EA) long, very thin, arising prolaterally (Figs. 8, 12, 14).



Figures 1–6. *Strotarchus paradoxus* (Petrunkevitch, 1963) male (ECOTAAR-Fos001): 1) Habitus, dorsal view; 2) habitus, ventral view; 3) carapace, dorsal view; 4) carapace, ventral view; 5) opisthosoma, ventral view; 6) detail of PLS, ventral view. AC, aciniform gland spigots; aPLS, apical segment of posterolateral spinnerets; bPLS, basal segment of posterolateral spinnerets. Scale bars: 1, 4) 1 mm; 2, 3, 5) 0.5 mm; 6) 0.2 mm.



Figures 7–12. *Strotarchus paradoxus* (Petrunkevitch, 1963) male (figs. 7–11, ECOTAAR-Fos001): 7–9) Right palp, 7) prolateral view; 8) retrolateral view; 9) detail of retrolateral view; 10–11) left palp; 10) prolateral view; 11) retrolateral view; 12) (IHNFG-5892): right palp, ventral view. BEF, basal embolar fold; Cy, cymbium; EA, embolar apex; EP, embolar process; RTA, retrolateral tibial apophysis; T, tegulum; TA, tegular apophysis. Scale bars: 7–12) 0.2 mm.



Figures 13–14. *Strotarchus paradoxus* (Petrunkevitch, 1963) male right palp diagrams: 13) Prolateral view; 14) retrolateral view. BEF, basal embolar fold; Cy, cymbium; EA, embolar apex; EP, embolar process; RTA, retrolateral tibial apophysis; T, tegulum; TA, tegular apophysis. Scale bars: 13–14) 0.2 mm.

Variation: Second male (IHNFG-5892), total length 4.23. Carapace 1.88 long, 1.43 wide; femur I 2.03/ II 1.75; ALS 0.53; PLS 1.04 (0.66+0.38). This male is not so well preserved as the other, it has several legs broken; the amber piece has many fractures, and the specimen is surrounded by artifacts on several parts, all these affect the visibility of structures. Fortunately, the spinnerets and both palps are partially visible, including part of the bulb of the right palp in ventral view (Fig. 12), structures that agree with those of the other male (ECOTAAR-Fos001).

DISCUSSION

Taxonomic assignment. The diagnostic characters of the genus *Strotarchus*, as stated by Bonaldo *et al.* (2012) (PLS with long apical segment, ALS widely separated, male with elongated cymbium, T with widely fused TA, embolus with large base abruptly narrowed distally and with a median process) let us clearly identified the studied fossil specimens as members of this genus. The studied males are assigned to *S. paradoxus* by the following considerations. First, they were found on the same area and geological period as the female described by Petrunkevitch (1963). Second, the males have similar size and form to that of the female in carapace and specially in the apical segment of the PLS of this species, which is proportionally thinner than in other species, and very similar to the drawing of Petrunkevitch (1963, fig. 99) of the aciniform gland spigots (AC in Fig. 6). Third, they differ from *S. heidti* and from the known males of the extant species by the thin apical segment of the PLS and by the characteristic form of the EP.

The extant species of *Strotarchus* are ground dwellers, found under stones and plant detritus, or wandering on the surface (Kaston, 1948; Edwards, 1958; Richman, 2017). The behavior of *S. paradoxus* was probably often wandering on the surface under the foliage of the *Hymenaea* trees known to exude resin that later becomes amber. The fact of have found two pieces with *S. paradoxus* male specimens indicate this species was seemingly common in the lowland tropical dry forest of the middle Miocene in the Simojovel area (Solórzano Kraemer, 2007). Most of *Strotarchus* species are found in Mexico; the genus is widely distributed in states from north, central and some southern states, such as Guerrero and Oaxaca (Bonaldo *et al.*, 2012). However, none of the extant species have been found in the Simojovel area, or even in the state of Chiapas. It is possible that future intensive inventories of spider fauna in this area could reveal the presence of any *Strotarchus* species.

ACKNOWLEDGMENTS. The first author thank the Instituto de Ciencia, Tecnología e Innovación del Estado de Chiapas for support to the project “Estudio de la Araneofauna (Arachnida: Araneae) fósil y actual de Simojovel de Allende, Chiapas, México” (ID-2019-1048). The second author thank ECOSUR for support during the writing process.

LITERATURE CITED

- Bonaldo, A. B., Saturnino, R., Ramírez, M. J., Brescovit, A. D. (2012) A revision of the American spider genus *Strotarchus* Simon, 1888 (Araneae: Dionycha, Systariinae). *Zootaxa*, 3363, 1–37. <https://doi.org/10.11646/zootaxa.3363.1.1>
- Dyal, S. (1935) Fauna of Lahore. 4. Spiders of Lahore. *Bulletin of the Department of Zoology of the Panjab University*, 1, 119–252, pl. 11–17.
- Dunlop, J. A., Penney, D., Jekel, D. (2017) A summary list of fossil spiders and their relatives. Version 18.5 (web page). in World Spider Catalog, Natural History Museum, Bern. Available from: <http://wsc.nmbe.ch> (accessed October 31, 2017).

- Dunlop, J. A., Penney, D., Jekel, D. (2020) A summary list of fossil spiders and their relatives. Version 20.5. (web page). in World Spider Catalog, Natural History Museum, Bern. Available from: <http://wsc.nmbe.ch> (accessed July 7, 2022).
- Edwards, R. J. (1958) The spider subfamily Clubioninae of the United States, Canada and Alaska (Araneae: Clubionidae). *Bulletin of the Museum of Comparative Zoology*, 118, 365–436.
- García-Villafuerte, M. A. (2022) Nuevos registros de arañas fósiles en ámbar de Chiapas, México: *Thymoites carboti* sp. nov. (Araneae, Theridiidae) y *Mimetus* sp. (Araneae, Mimetidae). *Boletín de la Sociedad Geológica Mexicana*, 74 (2), A040622. <https://doi.org/10.18268/BSGM2022v74n2a040622>
- Kaston, B. J. (1948) Spiders of Connecticut. *Bulletin of the Connecticut State Geological and Natural History Survey*, 70, 1–874.
- Ono, H., Ogata, K. (2018) *Spiders of Japan: their natural history and diversity*. Kanagawa, Japan, Tokai University Press, 713 pp.
- Petrunkévitch, A. I. (1963) Chiapas amber spiders. *University of California Publications in Entomology*, 31, 1–40.
- Pickard-Cambridge, F. O. (1899) Arachnida - Araneida and Opiliones Vol. 2, 41–88, pl. 2–6. In: F. D. Godman, O. Salvin (Eds.). *Biologia Centrali-Americana, Zoology*. London.
- Ramírez, M. J. (2014) The morphology and phylogeny of dionychan spiders (Araneae: Araneomorphae). *Bulletin of the American Museum of Natural History*, 390, 1–374. <https://doi.org/10.1206/821.1>
- Richman, D. B. (2017) Eutichuridae. Pp. 114–115. In: D. Ubick, P. Paquin, P. E. Cushing, V. D. Roth (Eds.). *Spiders of North America. An identification manual, 2nd Edition*. Keene, New Hampshire, USA, American Arachnological Society.
- Serrano-Sánchez, M. L., Hegna, T. A., Schaaf, P., Pérez, L., Centeno-García, E., Vega, F. J. (2015) The aquatic and semiaquatic biota in Miocene amber from the Campo La Granja mine (Chiapas, Mexico): paleoenvironmental implications. *Journal of South American Earth Sciences*, 62, 243–256. <https://doi.org/10.1016/j.jsames.2015.06.007>
- Simon, E. (1888) Etudes arachnologiques. 21e Mémoire. XXIX. Descriptions d'espèces et de genres nouveaux de l'Amérique centrale et des Antilles. *Annales de la Société Entomologique de France*, 6 (8), 203–216.
- Solórzano Kraemer, M. M. (2007) Systematic, palaeoecology, and palaeobiogeography of the insect fauna from Mexican amber. *Palaeontographica Abteilung A*, 282, 1–133. <https://doi.org/10.1127/pala/282/2007/1>
- Vega, F. J., Nyborg, T., Coutiño, M. A., Solé, J., Hernández-Monzón, O. (2009) Neogene Crustacea from Southeastern Mexico. *Bulletin of the Mizunami Fossil Museum*, 35, 51–69.
- World Spider Catalog (2022) World Spider Catalog Version 23.0 (web page), Natural History Museum Bern. Available from: <https://wsc.nmbe.ch/> (accessed February 2, 2022).
- Wunderlich, J. (1988) Die fossilen Spinnen im dominikanischen Bernstein. *Beiträge zur Araneologie*, 2, 1–378.