

## Review Article

# Roles of N-linked glycosylation and glycan-binding proteins in placentation: trophoblast infiltration, immunomodulation, angiogenesis, and pathophysiology

Zhengyuan Huang<sup>1</sup>,  Pei F. Lai<sup>1</sup>,  Alexander T. H. Cocker<sup>2</sup>, Stuart M. Haslam<sup>3</sup>, Anne Dell<sup>3</sup>, Hugh J. M. Brady<sup>3</sup> and Mark R. Johnson<sup>1</sup>

<sup>1</sup>Division of Reproductive and Developmental Biology, Department of Metabolism, Digestion and Reproduction, Imperial College London, London SW10 9NH, U.K.; <sup>2</sup>Department of Structural Biology, Stanford University School of Medicine, Stanford, CA 94305, U.S.A.; <sup>3</sup>Department of Life Sciences, Imperial College London, London SW7 2AZ, U.K.

**Correspondence:** Pei F. Lai (p.lai@imperial.ac.uk) and Mark R. Johnson (mark.johnson@imperial.ac.uk)



Protein N-linked glycosylation is a structurally diverse post-translational modification that stores biological information in a larger order of magnitude than other post-translational modifications such as phosphorylation, ubiquitination and acetylation. This gives N-glycosylated proteins a diverse range of properties and allows glyco-codes (glycan-related information) to be deciphered by glycan-binding proteins (GBPs). The intervillous space of the placenta is richly populated with membrane-bound and secreted glycoproteins. Evidence exists to suggest that altering the structural nature of their N-glycans can impact several trophoblast functions, which include those related to interactions with decidual cells. This review summarizes trophoblast-related activities influenced by N-glycan–GBP recognition, exploring how different subtypes of trophoblasts actively adapt to characteristics of the decidualized endometrium through cell-specific expression of N-glycosylated proteins, and how these cells receive decidua-derived signals via N-glycan–GBP interactions. We highlight work on how changes in N-glycosylation relates to the success of trophoblast infiltration, interactions of immunomodulators, and uterine angiogenesis. We also discuss studies that suggest aberrant N-glycosylation of trophoblasts may contribute to the pathogenesis of pregnancy complications (e.g. pre-eclampsia, early spontaneous miscarriages and hydatidiform mole). We propose that a more in-depth understanding of how N-glycosylation shapes trophoblast phenotype during early pregnancy has the potential to improve our approach to predicting, diagnosing and alleviating poor maternal/fetal outcomes associated with placental dysfunction.

## Introduction

Different subtypes of trophoblasts act constitutively to support fetal development *in utero* throughout pregnancy [1,2]. At the molecular level, both trophoblast-derived glycoproteins and glycan-binding proteins (GBPs) that recognize glycans (either as membrane-bound or secreted forms) play roles in cellular invasion, angiogenesis, and immunomodulation [3–7]. Glycoproteins can be N-glycosylated by the covalent attachment of oligosaccharides to the amide nitrogen of Asn located at a Asn-X-Ser/Thr sequence (in which X denotes any amino acid except for Pro). N-glycosylation is initiated in the endoplasmic reticulum (ER) with continued maturation in the Golgi apparatus, of which detailed pathways and kinetics have been illustrated elsewhere [8]. Several N-glycosylated proteins, such as integrins [9], human chorionic gonadotrophin (hCG) [10], human leukocyte antigens (HLAs) [11], pregnancy-specific glycoproteins (PSGs) [12], and immunoglobulin G (IgG) [13] are abundantly expressed at the maternal–fetal

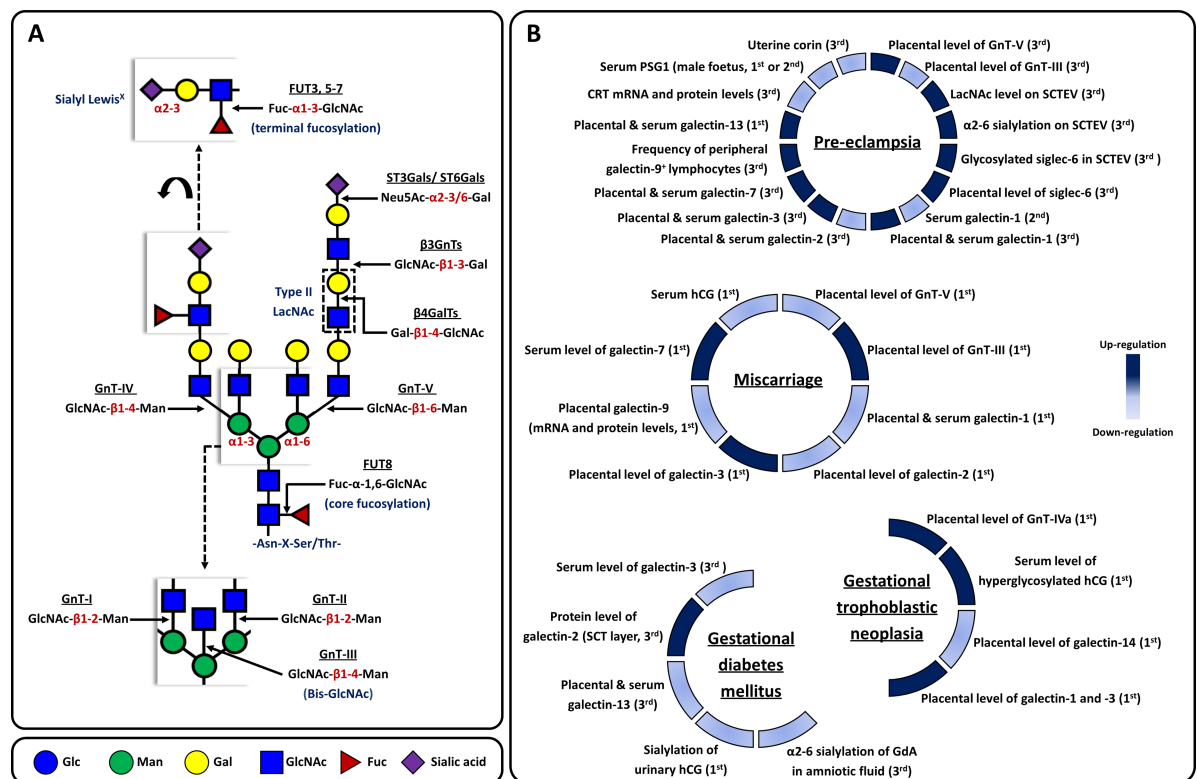
Received: 13 October 2022  
 Revised: 19 February 2023  
 Accepted: 22 February 2023

Version of Record published:  
 16 March 2023

interface, and are involved in distinct trophoblastic activities. The role of N-glycan recognition for induction of tolerance during pregnancy has also been supported [14–16]; however, the depth of our understanding for how N-glycosylation is involved in human placental development requires further expansion. This is particularly so regarding differences in the processes of N-glycosylation amongst multiple trophoblast subtypes, and alteration of trophoblastic N-glycomes (the entire N-glycan repertoire [17,18]) in relation to stage of gestation or pathology. In this review, we provide an overview of current knowledge on trophoblast activities that are related to N-glycosylation or N-glycan-GBP recognition (predominantly from on human studies) including observations from trophoblast cell lines, primary trophoblasts and villous tissue explants. Studies using different techniques, such as lectin staining, mass spectrometry, gelatin zymography, and Transwell cell migration/invasion assay, will be highlighted to emphasize the functional relevance of N-glycosylation in trophoblast functions.

## N-glycomes of human trophoblasts

Distinct N-glycomes confer the unique phenotypes associated with each trophoblast subtype, which have separate activities at the maternal–fetal interface to support placental development. Both biochemical and mass spectrometric methods have been used for N-glycomic profiling of trophoblasts from different gestational stages of human pregnancy [19–21]. For example, DNA sequencer-aided fluorophore-assisted carbohydrate electrophoresis, complemented by lectin blotting, demonstrated a gestation-related increase in core-fucosylated and multi-antennary N-glycans on membrane proteins isolated from placental tissues, but a decrease in biantennary N-glycans with bisecting  $\beta$ 1–4 N-acetylglucosamine (Bis-GlcNAc) and  $\alpha$ 2–3 sialylation (Figure 1A) [19].



**Figure 1. Biosynthesis of N-glycans in eukaryotes and aberrant glyco-codes in representative complications of pregnancy.**

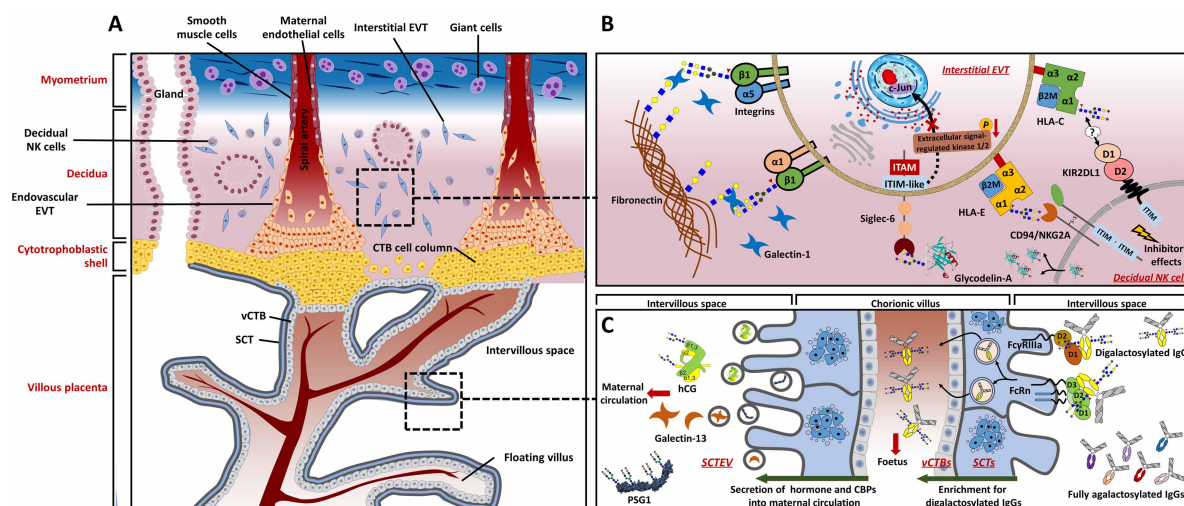
(A) Complex N-glycans are usually modified with extra monosaccharides, which include additional residues attached to the core, additional GlcNAc branches, GlcNAc branches elongated with LacNAc units, and different capping epitopes. Underlined texts indicate glycosyltransferases that catalyze the addition of monosaccharides. Texts in red indicate the glycosidic linkages between two monosaccharides. (B) Heatmap based on the relative levels of N-acetylglucosaminyltransferases (GnTs), galectins, glycoproteins and other factors related to glycosylation, between normal and pathological pregnancies [60,89,101,109,128–136]. The trimester of pregnancy at which each observation was made is given in parentheses.

Another study used matrix-assisted laser desorption/ionization time-of-flight tandem mass spectrometry to profile the N-glycomes of three primary trophoblast subtypes (Figure 2A), namely villous cytotrophoblasts (vCTBs; isolated from third-trimester placentae), syncytiotrophoblasts (SCTs; obtained after 72 h *in vitro* culture of vCTBs), and extravillous trophoblasts (EVTs; isolated from first-trimester placentae). It concluded that EVT cells express relatively lower levels of biantennary N-glycans with Bis-GlcNAc, but higher levels of N-glycans decorated with poly-lactosamine chains containing repeats of the type II N-acetyl-lactosamine (LacNAc) unit (Figure 1A) and multiantennary N-glycans, when compared with vCTBs and SCTs. The authors also found that the terminal sialic acids (N-acetylneuraminic acid is the predominant sialic acid found in human cells) from all trophoblast subtypes are primarily in  $\alpha 2-3$  linkages [21]. However, it remains to be seen how these findings can be used for the prediction of pregnancy outcomes.

## N-glycosylated proteins and functional GBPs are involved in trophoblast infiltration

### N-glycosylation-related glyco-genes and corresponding glycosyltransferases

Increasing evidence suggests the crucial role of glycosyltransferases in trophoblast migration and invasion, probably achieved via regulating integrin N-glycosylation or trophoblast adhesion to extracellular matrix (ECM) proteins (Table 1) [22–29]. For example, down-regulation of GnT-V expression in JAr (a choriocarcinoma cell line) or HTR-8/SVneo (a transformed human first-trimester trophoblast cell line) not only enhances their invasion and migration, but also reduces the extent of  $\beta 1-6$  GlcNAc branching (product of GnT-V) on  $\alpha 5 \beta 1$  integrins and increases gelatinolytic activity of matrix metalloproteinase (MMP)-2/9 [22,23]. Furthermore, swainsonine ( $\alpha$ -mannosidase class II inhibitor that induces a reduction in the extent of  $\beta 1-6$  GlcNAc branching) treatment also has promoting effects on the migration and invasion of first-trimester



**Figure 2. N-glycans and glycan-binding proteins are involved in trophoblast function at the maternal–fetal interface.**

(A) The maternal–fetal interface and trophoblast subtypes. Major cell types contained within the decidua in early first-trimester and associated major trophoblast subtypes are presented. (B) Cell–matrix and cell–cell interactions by glycan recognition.

Invasive trophoblasts express fibronectin-binding integrin  $\alpha 1 \beta 1$  and  $\alpha 5 \beta 1$  to aid migration out from CTB cell column into decidua. To control the invasion of EVTs, decidual NK cells secrete glycodelin-A into the intervillous space that interacts with Siglec-6 expressed by EVTs, which is followed by down-regulation of the extracellular signal-regulated kinase/c-Jun signaling pathway. Although there is evidence highlighting a role for N-glycosylation of HLA Class I molecules in their interaction with inhibitory receptors expressed by decidual NK cells, more details related to this process await elucidation. The depicted structures of N-glycans on  $\beta 1$  integrin [33], glycodelin-A [128], and HLAs [64] correspond to findings from previous studies.

(C) SCTs secrete vesicles containing hCG or galectin-13 into maternal circulation to promote both decidualization and placentation. At the same time, FcRn and Fc $\gamma$ R1IIa expressed on the SCT cell surface collaborate to assist the trans-placental transport of IgGs modified with digalactosylated N-glycans across the villous wall to enter the fetal circulation. The depicted structures of N-glycans on hCG [10], PSG1 [95], and IgGs [13] correspond to findings from previous studies.

**Table 1. Evidence that glycosyltransferases are involved in trophoblast infiltration**

Glycosyltransferases	Ref.	Models	Subjected to	Phenotypes exhibited
GnT-V	[22]	HTR8/SVneo; placental explants	Short hairpin RNA targeting <i>MGAT5</i>	↑ Invasion and migration ↑ Gelatinolytic activity of MMP-2/9 ↓ TIMP1/2 expression ↑ Villous explant outgrowth ↑ Invasion and migration
	[23]	HTR8/SVneo; villous explant cultures	<i>In vitro</i> culture in the presence of swainsonine <sup>1</sup>	
	[23]	JAr	siRNA targeting <i>MGAT5</i>	↑ Adhesion to ECM proteins fibronectin and collagen I/IV ↓ β1–6 GlcNAc branch on α5β1 integrin
GnT-IVa	[32]	JAr	siRNA targeting <i>MGAT4A</i>	↓ Migration, invasion and cellular adhesion to ECM proteins fibronectin and collagen I/IV ↓ β1–4 GlcNAc branch on β1 integrin <sup>2</sup>
	[29]	JAr	<i>MGAT4A</i> overexpression	↑ Migration, invasion and cellular adhesion to ECM proteins fibronectin and collagen I/IV ↑ Rate of tumor formation in mice
GnT-III	[24]	HTR8/SVneo	siRNA targeting <i>MGAT3</i>	↓ Invasion and migration ↓ Gelatinolytic activity of MMP-2/9 ↑ TIMP-1/2 expression <sup>3</sup>
β4GalT3	[28]	HTR8/SVneo; primary EVT's	<i>B4GALT3</i> overexpression	↓ Migration (both) and invasion (HTR8/SVneo only) ↑ Adhesion to laminin (HTR8/SVneo only) ↑ Terminal Gal on β1 integrin ↑ Enhances β1 integrin degradation.
FUT8	[27]	JAr and JEG-3	siRNA targeting <i>FUT8</i>	↓ Migration, invasion, proliferation and levels of epithelial-mesenchymal transition markers

<sup>1</sup>Swainsonine is a potent inhibitor of Golgi α-mannosidase II, which indirectly reduces the generation of β1–6 branch in N-glycans;

<sup>2</sup>This conclusion was based on three independent lectin blot analyses of *Datura stramonium* agglutinin binding;

<sup>3</sup>TIMP-1/2 are specific endogenous inhibitors of MMP-2/9, which are also expressed in the placenta. Arrows denote up-regulated (↑) or down-regulated (↓) expression compared with the control.

villous explants in *in vitro* culture [23]. In contrast, down-regulation of Bis-GlcNAc abundance (Figure 1A) by *MGAT3* (gene encoding GnT-III) silencing inhibits the migration and invasion of HTR-8/SVneo cells [24], which could be attributed to the release of inhibition by Bis-GlcNAc for further processing or elongation of GlcNAc branching [25,26]. The knockdown of the glycosyltransferase responsible for N-glycan core fucosylation (FUT8) also leads to a suppressed migration and invasion in JEG-3 (a choriocarcinoma cell line) and JAr [27]. Overexpression of β1–4 galactosyltransferase 3 (β4GalT3), a glycosyltransferase that adds galactose (Gal) to GlcNAc in a β1–4 linkage to generate type II LacNAc), in HTR-8/SVneo cells and primary human trophoblasts suppresses their migration [28], suggesting that β4GALT3 could play a regulatory role in trophoblast migration.

### N-glycosylated proteins in membrane-bound or secreted forms

Characteristic features of the epithelial-mesenchymal transition are observed when vCTBs differentiate, migrate out from CTB cell columns, and invade the decidua [1]. For example, differentiated vCTBs, during movement from the villous space to the placental bed, exhibit reduced levels of laminin-binding α6β4 integrin but increased levels of the fibronectin-binding α1β1 and α5β1 integrins (Figure 2B) [30,31]. Trophoblast-derived integrins are N-glycosylated, whose N-glycomes can be directly influenced by the expression level of glycosyltransferases [23,28,32]. Specifically, the N-glycome of β1 integrin in human placenta has been reported to be gestationally related, as evidenced by differences in electrophoretic mobility between β1 integrins immunoprecipitated from first-trimester (invasive) and term gestation (non-invasive) vCTBs. Treatment of first-trimester β1 integrins with endo-β-galactosidase neutralizes this difference, suggesting that the former contain more

polylactosamine chains [33]. Another N-glycosylated protein hCG, one of the gestational hormones abundantly produced and secreted into maternal circulation by SCTs (Figure 2B), is involved in regulating trophoblast invasion [34–37]. Tapia-Pizarro et al. [36] suggested that hCG might alter the endometrial ECM through modulating MMP-2 activity and tissue inhibitor of metalloproteinase 1 (TIMP-1) secretion by primary endometrial stromal cells, which eventually promote the trophoblast invasion. A hCG-isoform characterized by large glycan moieties termed hyperglycosylated hCG (hCG-h), which is produced by invasive CTBs and is the major hCG-isoform found in serum during the first 4–5 weeks of pregnancy [38,39].

Lee et al. [35] compared the stimulatory activities of hCG and hCG-h on trophoblast invasion, and found that hCG-h has a more potent stimulating effect on the invasion of both JEG-3 and primary human trophoblasts than normally glycosylated hCG. These results collectively highlight the potential pro-invasive properties of hCG, yet the mechanism explaining why hCG-h has a more potent stimulating effect awaits further elucidation.

## Calreticulin, Siglec-6, and galectins

N-glycans on endogenous or exogenous glycoproteins are potential ligands for functional GBPs expressed by trophoblasts. Calreticulin (CRT) is a glycan-binding chaperone that aids correct folding of glycopeptides in the ER lumen. ER stress can result in extracellular release of chaperones, and a role in mediating vCTB syncytialization has been recently reported for secreted CRT [40]. A higher level of CRT protein has been observed in first-trimester placenta compared with other gestational periods [41]. Knockdown of CRT expression suppresses invasion of HTR-8/SVneo cells, followed by a weaker attachment to fibronectin that is probably attributed to the markedly changed N-glycan composition on  $\beta 1$  integrin [41]. Heterodimeric  $\alpha 5\beta 1$  integrin is a major ligand for fibronectin, and N-glycosylation patterns on both subunits influence their biological functions [42–44]. CRT-overexpressing JEG-3 cells also demonstrate suppressed invasion [45], suggesting that homeostatic control of CRT levels is important for the normal invasive activities of trophoblasts.

Sialic acid-binding immunoglobulin-like lectin 6 (Siglec-6) is a lectin receptor, which preferentially binds to  $\alpha 2$ –6 sialylated N-acetylgalactosamine, and its placental expression is believed to be specific to humans [46,47]. Siglec-6 is detectable on the surface of TEV-1 (immortalized first-trimester EVT) and JEG-3 cells, acting as a GBP that interacts with  $\alpha 2$ –6 sialylated N-glycans carried by glycodefin-A (GdA) which is a glycoprotein abundantly produced by the decidua [48]. Significantly, a substantial proportion of the GdA N-glycan antennae are terminated with  $\alpha 2$ –6 sialylated N-acetylgalactosamine, which is a rare terminal epitope. The Siglec-6/GdA interaction has been proposed to hinder trophoblast invasiveness by reducing extracellular signal-regulated kinase/c-Jun signaling activity (Figure 2B) [49].

The abundance of trophoblast-derived galectins at the maternal–fetal interface highlights their regulatory roles in trophoblast migration and invasion (Figure 2B). The expression of galectins-1, -3, -8, -13, and -14, is developmentally regulated and dependent on trophoblast differentiation. Specifically, galectin-13 (also known as placental protein 13), -14 (placental protein-13-like), and -16 are exclusively expressed by anthropoid primates (including humans) [7,50]. As soluble proteins that are relatively conserved among the lectin family, galectins exhibit high affinity for LacNAc and related structures owing to a unique amino acid sequence motif in their carbohydrate recognition domain. The glycan moiety specificity, functions and sources of expression of galectins restricted to mammalian pregnancy have been reviewed [51]. Studies using primary trophoblasts or cell lines have demonstrated that galectins are involved in the cell–matrix and cell–cell interaction of trophoblasts during placentation (Table 2) [9,52–59]. Among all those placental galectins, galectin-1, -3, -7, and -14 have been related to trophoblast infiltration (migration and/or invasion) via their interactions with ECM proteins according to studies on both invasive trophoblast cell lines and primary EVT cells [54,60–62]. Notably, although galectin-8 is selectively expressed by both vCTBs and EVT cells at the maternal–fetal interface [63], its functional relevance during pregnancy has not yet been elucidated.

## N-glycosylated immunomodulators and galectins

In mammals, there exists membrane-bound proteins associated with the immune system that are N-glycosylated (e.g. HLA, Toll-like, or T-cell receptors), and some have multiple N-glycosylation sites [64–66]. Preconditioning BeWo cells with glycosyltransferase inhibitors (tunicamycin and castanospermine) prior to co-incubation with peripheral blood-derived CD56<sup>bright</sup> natural killer (NK) cells can decrease interferon- $\gamma$  production by the latter, which suggests potential roles for N-glycosylation in modulation of NK cell-mediated inflammatory signaling [15]. Through actively producing transforming growth factor  $\beta 1$  (immunomodulators

**Table 2. Evidence that galectins are involved in mediating trophoblastic activities**

Galectins	Ref.	Models	Subjected to	Phenotypes exhibited
Galectin-1	[59]	HIPEC-65 <sup>1</sup>	Treatment with rhgal-1	↑ Level of membrane-bound HLA-G
	[52]	JEG-3	Knockdown of <i>LGALS1</i>	↓ Level of membrane-bound HLA-G
	[55]	BeWo	Treatment with recombinant human IL-2 and TNF- $\alpha$	↑ Galectin-1 expression
	[56]	BeWo and primary CTBs	Treatment with rhgal-1	↓ hCG and progesterone production
	[54]	HTR-8/SVneo and primary CTBs	Treatment with rhgal-1	↑ Cell fusion
	[57]	Mouse	Treatment with anti-galectin-1 antibody	↓ Invasion
Galectin-3	[60]	HIPEC-65 <sup>1</sup> SGHPL-4 <sup>2</sup> BeWo	Treatment with rhgal-3	↑ Invasion
	[53]	HTR-8/SVneo	Knockout of <i>Lgals1</i>	↑ Rate of fetal loss in allogeneic mating
	[58]	Mouse	Knockdown of <i>LGALS3</i>	↑ Cell invasion
	[53]	HTR-8/SVneo	Knockdown of <i>LGALS3</i>	↑ Number of networks and total length of capillaries
Galectin-7	[61]	HTR-8/SVneo	Treatment with rhgal-7	↑ Cell fusion
	[90]	Mouse	Knockout of <i>Lgals7</i>	↓ Migration and invasion, protein level of the $\beta$ 1 integrin, MMP-2/9
Galectin-9	[81]	First-trimester human decidual T cells	Co-culture with galectin-9 <sup>+</sup> primary CTBs	Impaired differentiation of trophoblast layers
	[82]	Peripheral NK cells	Knockdown of <i>LGALS9</i>	↑ Adhesion with human endothelial epithelial cells
	[83]	HTR-8/SVneo	Knockdown of <i>LGALS9</i>	Normal fertility and normal and fertile offspring
Galectin-13	[108]	Peripheral T cells	Treatment with rhgal-9 and recombinant human IL-27	Differentiation of decidual Tim-3 <sup>+</sup> CD4 <sup>+</sup> T cells into cells with regulatory T cell-like phenotypes
	[86]	Peripheral neutrophils	Treatment with rhgal-13	Transformation into a decidual NK-like phenotype
Galectin-14	[62]	Primary EVT	Knockdown of <i>LGALS14</i>	↑ Susceptibility to NK cytotoxicity
	[62]	Primary EVT	Knockdown of <i>LGALS14</i>	↑ Apoptosis and up-regulation of CD95 expression and IL-8 production
Galectin-16	[50]	Peripheral T cells	Treatment with rhgal-16	↑ Expression of programmed death-ligand 1, hepatocyte growth factor, vascular endothelial growth factor, MMP-9, TNF- $\alpha$
	[50]	Peripheral T cells	Treatment with rhgal-16	↑ Apoptosis of CD3 <sup>+</sup> T cells

<sup>1</sup>HIPEC-65 is a human invasive, proliferative extravillous cytotrophoblast cell line derived from purified primary EVT isolated from first-trimester human chorionic villi; <sup>2</sup>SGHPL-4 cells are derived from primary human first-trimester EVT transfected with the early region of SV40 and retain similar invasive potential of normal EVT. Arrows denote up-regulated (↑) or down-regulated (↓) expression compared with the control.

with several N-glycosylation sites), primary endovascular EVTs isolated from term placenta can promote differentiation of peripheral CD4<sup>+</sup> T cells (from healthy non-pregnant women) into regulatory T cells with immunosuppressive characteristics, while interstitial EVTs and decidual endothelial cells cannot [67]. The complex and delicate cross-talk between EVTs and decidual immune cells are required in the establishment and maintenance of maternal–fetal immunotolerance; to what extent N-glycosylation influences the immunomodulation of EVTs under physiological conditions remains relatively unexplored.

## HLAs

EVTs have an unusual profile of class I HLA (HLA-I) proteins compared with HLA-null villous trophoblasts, which is a defining feature of EVT differentiation characterized by co-expression of HLA-C (classic HLA-I), and HLA-E, -F, and -G (non-classic HLA-I) [1]. HLA-I variants share a highly conserved N-glycosylation site on their heavy chain subunit [64], and the function of this N-glycosylation site has been related to the correct folding of HLA-Cw1 in ER with the involvement of lectin-like chaperones calnexin and CRT [68].

721.221 (transformed human B lymphocyte) transfectants that express HLA-Cw4 or -Cw6, along with their respective non-glycosylated mutants, have demonstrated that ablation of the N-glycosylation site in HLA-C

reduced their recognition by killer cell immunoglobulin-like receptor 2DL1 (KIR2DL1), as well as KIR2DL1-mediated inhibition of NK cell lysis (Figure 2B) [69]. Notably, recent single cell transcriptome analyses demonstrated that three decidual NK cell subsets (namely dNK1, dNK2, and dNK3) express *KIR2DL1* (along with other KIR genes) to different extents; its high expression in the dNK1 subset was confirmed at protein level using flow cytometry and predicted to be indicative of its role in EVT interactions [70]. These observations collectively suggest that N-glycosylation of HLA-C on trophoblasts might mediate NK cell tolerance through KIR2DL1 interaction. In humans, the interaction between specific maternal KIR genotypes and specific fetal/placental HLA-C haplotypes can determine the risk of developing pre-eclampsia [71]. Furthermore, a highly expressed inhibitory heterodimeric receptor on decidual NK cells, the CD94/NKG2A heterodimer, is a C type lectin-like receptor with a conserved carbohydrate recognition domain that specifically binds glycosylated ligand HLA-E expressed by EVT (Figure 2B) [72]. McMaster et al. [73] have reported that placental HLA-G1 (the isoform that most structurally resembles classic HLA-I) is decorated with complex N-glycans comprising of polylactosamine chains, which is a well-known ligand of major galectins (-1, -3, -8, and -9) at the maternal–fetal interface [74]. The functional relevance of polylactosamine chains on HLA-G to immunosuppressive effects that are possessed by EVTs remains to be established, and methods for obtaining enough endogenous glycoprotein from primary human EVTs to allow more detailed analysis have yet to be developed [4].

## IgG

IgG has a conserved N-glycosylated site (Asn<sup>297</sup>) on each of the heavy chains of its fragment crystallizable (Fc) region [75]. Two neonatal receptors for the Fc region of IgGs, namely neonatal Fc receptor (FcRn) and low affinity IgG gamma Fc region receptor III-A (FcγRIIIa), are co-localized on SCTs and are responsible for receptor-mediated trans-placental transport of IgGs [13,76]. IgG mediates inflammatory activities through the engagement of its Fc with FcγRs and IgGs with different Fc-glycan profiles show distinct affinities for the same FcγR [75,77]. The protein crystal structure of FcγRIIIa-IgG complex suggests that FcγRIIIa has a stronger affinity to afucosylated Fc than fucosylated Fc [78]. Interestingly, an overall increase in galactosylation and sialylation but decreased abundance of Bis-GlcNAc are observed in the Fc-glycan profile of maternal IgG along with advancing gestation [79]. Madeleine et al. [13] reported that maternal IgGs with digalactosylated Fc-glycans and ability to activate fetal NK cells are selectively transferred across the placenta to the neonate because of their enhanced binding to FcRn and FcγRIIIa (Figure 2C), suggesting that antigen-specific Fc-glycan profiles ensure a preferential transfer. However, a more recent study of two clinical cohorts argued that no consistent difference in digalactosylation of maternal and cord IgG1 (the most abundant IgG subclass) and FcRn, rather than FcγRIIIa, contributes to trans-placental transport of IgG [80].

## Galectins exhibiting immunomodulatory effects

Increasing evidence gathered from *in vivo* and *in vitro* studies indicate that lectin–glycan interactions, especially those mediated by the galectin family, are required for immune cell adaptations to tolerate the fetal semi-allograft. Using proliferative EVT cell line HIPEC-65, Tirado-González et al. [59] reported a key role of galectin-1 in modulating HLA-G expression on the trophoblast cell surface, while the exposure of JEG-3 cells to recombinant human IL-2 and tumor necrosis factor  $\alpha$  (TNF- $\alpha$ ) leads to substantial increase in the expression of galectin-1, together suggesting a putative role of galectin-1 in the prevention of excessive inflammation [52]. The role of trophoblast-derived galectin-9 in the maintenance of immune tolerance during early pregnancy has also been highlighted in human placenta, as evidenced by the induction and promotion of decidual T-cell immunoglobulin and mucin 3 (Tim-3)<sup>+</sup> CD4<sup>+</sup> T cells differentiation into cells with Treg-like phenotypes *in vitro* by trophoblast-derived galectin-9 and IL-27 together [81]. Li et al. [82] confirmed that ~75% of trophoblast cells isolated from first-trimester human placenta are galectin-9<sup>+</sup> and over 60% of decidual NK cells are Tim-3<sup>+</sup>; through interaction with Tim-3, galectin-9 also induces the transformation of peripheral NK cells into a decidual NK-like phenotype. Moreover, HTR-8/SVneo cells protect themselves from NK-mediated cytotoxicity by expressing galectin-9 [83]. Unlike galectin-1 and -9 that are expressed by decidual cells, galectin-13 is predominantly expressed by SCTs (localized inside extracellular vesicles, Figure 2C) and, to a lesser extent, trophoblasts next to or within maternal spiral arterioles [84,85]. Galectin-13 is also considered to be immunomodulatory because it induces apoptosis of activated T cells *in vitro*, diverts and kills T cells and macrophages in the maternal decidua, and polarizes neutrophils towards a phenotype facilitating placental growth (Table 2) [86,87]. Galectin-16 has also been demonstrated to induce apoptosis of CD3<sup>+</sup> T cells; it has been proposed to be the reason why galectin-16 levels increase with greater trophoblastic differentiation (as observed in BeWo

and JEG-3 cell lines), whereby more galectin-16 is likely to be needed with advancing gestation to promote immunotolerance that is increasingly required at the maternal–fetal interface [50,88]. Recent progress in understanding the immunomodulatory role of galectins in maternal immune adaptation has been summarized elsewhere [50,86,89,90].

## N-glycosylated proteins and GBPs involved in placental angiogenesis

Both hemodynamic and uteroplacental adaptations are required in normal human pregnancy to accommodate the growing fetus, during which N-glycosylated proteins are involved. For example, pregnancy-specific  $\beta$ 1-glycoproteins (PSGs) are well-known as pro-angiogenic glycoproteins mainly expressed and secreted into maternal circulation by SCTs (Figure 2C) with advancing gestation [91–93]. Their expression is restricted to species with hemochorial placentation (maternal blood is in direct contact with fetal tissue) [94]. PSG1 is the best studied subtype with highest abundance. It possesses seven potential N-glycosylation sites of which at least four are substituted with N-glycans whose antennae are potential galectin ligands (complex N-glycan containing polyactosamines chains elongated moieties with mainly  $\alpha$ 2–3 sialic acid terminals, Figure 1A) [95]. PSG1 not only interacts with  $\alpha$ 5 $\beta$ 1 integrins to modulate EVT adhesion and migration [96], but performs its pro-angiogenic activity and immunomodulatory actions by binding to the latency-associated peptides of anti-inflammatory cytokines transforming growth factor- $\beta$ 1 and - $\beta$ 2, resulting in their activation and increasing the number of regulatory T cells [93,97,98]. Angiogenesis requires the remodeling of ECM through proteases such as MMPs. In particular, the expression of MMP-2 and -9 by EVTs has been highlighted with respect to their ECM-remodeling function [99,100]. PSG1 also induces a higher expression of MMP-2 by HTR8/SVneo cells [93], suggesting a possible mechanism of PSG1-mediated angiogenesis.

Corin is a protease expressed in the human uterus during pregnancy, it has been demonstrated that its expression is reduced in cases of pre-eclampsia [101]. Glycosidase digestion of rat and human corin has been used to show that it is heavily modified with N-glycans [102]. The pro-angiogenic activity of corin has been demonstrated in the activation of atrial natriuretic peptides, which can promote trophoblast invasion and spiral artery remodeling [101]. HEK293 (human embryonic kidney) cells modified to express rat corin have been used to demonstrate the functional necessity of its N-glycans, whereby Asn to Ser substitution mutations at two N-glycosylation sites within the catalytic domain of corin prevented its activation [102]. How reduced levels of corin change the maternal–fetal interface during pre-eclampsia, and whether its glycosylation status affects its function, remain to be established.

Galectin-13 has pro-angiogenic effects and its blood serum concentration increases with advancing gestation in human pregnancy [103,104]. Findings from murine studies have suggested that galectin-13 reduces blood pressure by activating endothelial prostaglandin and nitric oxide signaling pathways [105,106]. For humans, immunohistochemical analysis of placentae obtained from early pregnancy terminations have shown that extracellular galectin-13 tends to aggregate around decidual veins associated with zones of necrosis, containing T cells, neutrophils, and macrophages [84]. It is possible that human SCTs actively secrete galectin-13 into the intervillous space (Figure 2C) during early pregnancy to act as ‘decoys’, by attracting maternal immune cells to minimize their hindrance of invasive trophoblasts during remodeling of maternal spiral arterioles prior to placentation. This decoy mechanism is likely to be specific to anthropoid primates (including humans) because galectin-13 is solely expressed in the hemochorial placenta of these species [50]. Pro-angiogenic roles of galectin-13 and -14 have been highlighted previously, where galectin-13 has been observed to switch peripheral neutrophils towards a phenotype that produces more pro-angiogenic factors that include MMP-9 [86], and knockdown of galectin-14 in primary trophoblasts down-regulates the expression and activity of MMP-9 [62]. Galectin-13 and -14 both induce non-activated T cells to produce the pro-angiogenic cytokine IL-8 [107,108].

## Altered N-glycan–GBP recognition to pathological conditions in pregnancy

Alterations of glyco-codes (e.g. placental N-glycome, proportions of glycoforms on N-glycosylated proteins, or protein levels of GBPs required for trophoblast function) at the maternal–fetal interface have been associated with pathological conditions in pregnancy [16,109–111]. Two studies compared the N-glycome of third-trimester human placenta between uncomplicated pregnancies and those affected by pre-eclampsia using lectin histochemistry: Marini et al. [110] observed a reduction in LacNAc (indicated by *Datura stramonium*



agglutinin staining) in the apical border of the SCT, while Sukhikh et al. [112] reported an opposite result for the LacNAc level in SCT using a different LacNAc-binding lectin (*Erythrina Cristagalli* agglutinin). These contradictory observations probably reflect the differing accessibilities of the two lectins to LacNAc ligands in the placental samples. Our understanding of the role of N-glycomic dynamics in pathological pregnancies is still developing. Rigorous physicochemical characterization of trophoblastic N-glycomes is needed in order to assess whether glycosylation changes could be diagnostic of the risk of developing pre-eclampsia. Alternatively, differences between healthy and pathological pregnancies exhibited by N-glycosylation-related enzymes in human placentae (Figure 1B) might be a more feasible approach to aid prediction, diagnosis, and management of clinical complications [85,109,111,113]. For example, an increased level of GnT-V [114] and a decreased level of GnT-III [115] have been observed in term placentae with pre-eclampsia when compared with gestation-matched healthy controls. In contrast, total abundance and enzymatic activity of GnT-V along with the concentration of its product  $\beta$ 1–6 GlcNAc in chorionic villi during 6–9 weeks of gestation, are generally lower in placentae from early spontaneous miscarriages compared with those in healthy pregnancies, whereas the reverse was observed for GnT-III and its products [109].

Abnormal N-glycomes of urinary hCG have been related to malignant gestational trophoblastic disease, for example, the N-glycans of hCGs from hydatidiform mole patients contained lower levels of Lewis<sup>x</sup> antigens (Gal $_{\beta$ 1–4[Fuc $_{\alpha$ 1–3}]GlcNAc) and higher sialylation than hCGs from healthy early pregnancies [10]. In contrast, most urinary hCGs from choriocarcinoma patients have no sialic acid residues but are more likely to carry tri-antennary N-glycans with a  $\beta$ 1–4 GlcNAc branch [116]. Furthermore, different hCG N-glycomes have been found in different stages of pregnancy, sites of synthesis, and other clinical pathologies [4,117]. Guibourdenche et al. used clone B152 antibody raised against a choriocarcinoma-derived hCG to show that only 2–5% of total hCG secreted by primary first-trimester SCT during differentiation are recognized by this antibody. Conversely, 10–20% of total hCG secreted by primary EVT<sub>s</sub> from the same placentae were recognized despite increased total hCG secretion by SCTs but not EVT<sub>s</sub> [118]. Thus, correlations between different hCG glycoforms and pregnancy pathologies is of considerable interest.

When considering GBPs, it has been shown that CRT mRNA and protein levels are up-regulated in pre-eclamptic placentae [45]. Siglec-6 has been observed to be more abundant in both the basal plate and chorionic villi of placentae from pre-eclamptic preterm (24–36 weeks of gestation) births, when compared with those from gestation-matched births without pre-eclampsia [119]; an increased level of glycosylated Siglec-6 in SCT-derived extracellular vesicles (SCTEV) from pre-eclamptic placentae has also been reported [120]. The Siglec-6/GdA interaction has been suggested to be involved in the inhibition of trophoblast invasiveness [49]; therefore, the aberrant up-regulation of trophoblast-derived Siglec-6 could be a consequence of abnormal utero-placental perfusion, which supports the current concepts of pathogenesis of pre-eclampsia characterized by placental ischemia [121].

Aberrant expression of representative galectins in different pathological pregnancies has been summarized; specifically, altered expressions of galectin-1 and -13 in pathological pregnancies, either at placental or serum levels, have been intensively reported [89]. Freitag et al. has shown galectin-1 expression is elevated in placental villi during severe early onset pre-eclampsia (<34 weeks of gestation), when compared with late onset pre-eclampsia (>34 weeks of gestation) and control (normotensive pregnancies, 32–37 weeks of gestation) groups. Thus, maternal serum galectin-1 concentrations at 22 weeks of pregnancy is a potential predictor of pre-eclampsia [113]. Furthermore, spontaneous pre-eclampsia-like syndrome has been observed in wildtype mice during inhibition of galectin-1-mediated angiogenesis [113]. According to four nested case-control studies, serum levels of galectin-13 during the first-trimester are lower in women who subsequently developed preterm pre-eclampsia (delivery before 37 weeks of gestation) compared with those women who had normal delivery at term [122–125]. In contrast, serum levels of galectin-13 during the third-trimester were higher in women presenting with developed preterm pre-eclampsia [126]. This gestational U-turn in serum level of galectin-13 might be attributed to the augmented shedding of galectin-13 into maternal circulation via SCTEV induced by ischemic placental stress (Figure 2C) [85,108,126,127]. Unlike in serum, decreased placental expression of galectin-13 was observed in both miscarriages (first-trimester) and pregnancies presenting with preterm pre-eclampsia (third-trimester) compared with healthy counterparts [108,126].

## Summary

Detailed descriptions of spatiotemporal changes in placental glyco-gene expression and protein levels of glycosidases, glycosyltransferases and GBPs are needed to deduce their role in the modulation of trophoblast function.

Furthermore, comprehensive N-glycomic profiling of all human trophoblast subtypes present during early pregnancy would help to determine their relative contributions to placentation and potentially identify novel biomarkers of gestational trophoblastic disease. These data need to be compared with gestation-linked changes in the N-glycosylation patterns of proteins that determine placentation to gain a better insight into their impact on the immunosuppressive activities of trophoblasts in physiological and pathological pregnancies. In all cases, improvements in technology are required to discriminate trophoblast subtypes coupled with stringent clinical phenotyping. Additionally, future studies could focus on the mechanistic aspects of how trophoblast-derived GBPs interact with different cell types in the decidua. These approaches will help to determine: (i) to what extent they contribute to the creation of a uterine microenvironment that promotes healthy placentation and fetal development, and (ii) whether placental glycoproteins can act as therapeutic targets to manage pregnancy complications.

## Perspectives

- Placental N-glycosylation influences immune cell activities at the maternal–fetal interface, which can dictate the progression of pregnancy. Subtle changes at the placental N-glycome caused by disrupted activities of glycosidases and glycosyltransferases in ER and Golgi apparatus, or steric interference at GBPs, have been linked to pathologies that include molar pregnancy, miscarriage, and pre-eclampsia.
- Activities of trophoblasts (e.g. migration and invasion) are dependent on the interaction between GBPs (e.g. Siglec-6 and galectins) with exogenous N-glycosylated proteins (e.g. GdA and integrins), N-glycosylation patterns of several placental proteins (e.g. hCG and HLA), and expression of glyco-genes (e.g. *MGAT3* and *MAGT5*) as demonstrated using siRNA knockdown and pharmacological inhibitors of glycosidase. However, their mechanistic relevance to *in vivo* function needs to be determined to aid evaluation of their use as biomarkers and therapeutic targets.
- The recent development of glycomics has revolutionized how we identify new, as well as re-examine established, glycosylated proteins of interest for a multitude of pathophysiological processes; it is particularly valuable for obtaining more detailed insight for how specific placental N-glycan patterns are linked to different pregnancy complications (by supporting downstream mechanistic studies needed to separate correlation from causation). Demand for its application on complex tissues such as human placenta is ever-present, alongside N-glycan profiling and detection of specific GBPs in maternal blood and urine to predict placental dysfunction in a non-invasive manner to improve reproductive health outcomes.

## Competing Interests

The authors declare that there are no competing interests associated with the manuscript.

## Funding

This work was supported by Borne (registered charity number 1167073) and the Overseas Study Program of Guangzhou Elite Project (approval number S.J. [2018] No. 3).

## Open Access

Open access for this article was enabled by the participation of Imperial College London in an all-inclusive *Read & Publish* agreement with Portland Press and the Biochemical Society under a transformative agreement with JISC.

## Author Contributions

Z.H. wrote the first draft of the manuscript. Z.H., P.F.L., A.T.H.C., S.M.H., A.D., H.J.M.B. and M.R.J. contributed to all subsequent editing and approved the final submitted draft.

## Abbreviations

Asn, asparagine;  $\beta$ 2M,  $\beta$ 2 microglobulin;  $\beta$ 3GnT,  $\beta$ 1–3 N-acetylglucosaminyltransferase;  $\beta$ 4GalT3,  $\beta$ 1–4 galactosyltransferase; Bis-GlcNAc, bisecting  $\beta$ 1–4 N-acetylglucosamine; CRT, calreticulin; ECM, extracellular matrix; ER, endoplasmic reticulum; EVT, extravillous trophoblast; Fc region, fragment crystallizable region; Fc $\gamma$ R1IIa, low affinity IgG gamma Fc region receptor III-A; FcRn, neonatal Fc receptor; Fuc, fucose; FUT, fucosyltransferase; Gal, galactose; GBP, glycan-binding protein; GdA, glycodelin-A; Glc, glucose; GnT, N-acetylglucosaminyltransferase; hCG(h), (hyperglycosylated) human chorionic gonadotrophin; HLA, human leukocyte antigen; IgG, immunoglobulin G; IL, interleukin; ITI(A)M, immunoreceptor tyrosine-based inhibitory (activating) motif; KIR(2DL1), killer cell immunoglobulin-like receptor (2DL1); LacNAc, N-acetylglucosamine; Man, mannose; MMP, matrix metalloproteinase; NK, natural killer; PSG, pregnancy-specific  $\beta$ 1-glycoprotein; rhgal, recombinant human galectin; Siglec-6, sialic acid binding immunoglobulin-like lectin 6; SCT, syncytiotrophoblast; SCTEV, syncytiotrophoblast-derived extracellular vesicles; Ser, serine; ST3(6)GAL,  $\alpha$ 2–3(6) sialyltransferase; siRNA, small interfering RNA; Tim-3, T-cell immunoglobulin and mucin 3; TIMP, tissue inhibitor of metalloproteinase; Thr, threonine; TNF- $\alpha$ , tumor necrosis factor  $\alpha$ ; (v)CTB, (villous) cytotrophoblast.

## References

- 1 Turco, M.Y. and Moffett, A. (2019) Development of the human placenta. *Development* **146**, dev163428 <https://doi.org/10.1242/dev.163428>
- 2 Knofler, M., Haider, S., Saleh, L., Pollheimer, J., Gamage, T. and James, J. (2019) Human placenta and trophoblast development: key molecular mechanisms and model systems. *Cell. Mol. Life Sci.* **76**, 3479–3496 <https://doi.org/10.1007/s00018-019-03104-6>
- 3 Pan, Y., Chen, M. and Lash, G.E. (2022) Role of osteopontin (OPN) in uterine spiral artery remodeling. *Placenta* **126**, 70–75 <https://doi.org/10.1016/j.placenta.2022.06.014>
- 4 Pang, P.C., Haslam, S.M., Dell, A. and Clark, G.F. (2016) The human fetoe embryonic defense system hypothesis: twenty years on. *Mol. Aspects Med.* **51**, 71–88 <https://doi.org/10.1016/j.mam.2016.06.002>
- 5 Krivokuća M, J., Vilotić, A., Nacka-Aleksić, M., Pirković, A., Čujić, D., Legner, J. et al. (2021) Galectins in early pregnancy and pregnancy-associated pathologies. *Int. J. Mol. Sci.* **23**, 69 <https://doi.org/10.3390/ijms23010069>
- 6 Passaponti, S., Pavone, V., Cresti, L. and Ietta, F. (2021) The expression and role of glycans at the fetoe-maternal interface in humans. *Tissue Cell* **73**, 101630 <https://doi.org/10.1016/j.tice.2021.101630>
- 7 Blois, S.M., Dveksler, G., Vasta, G.R., Freitag, N., Blanchard, V. and Barrientos, G. (2019) Pregnancy galectinology: insights into a complex network of glycan binding proteins. *Front. Immunol.* **10**, 1166 <https://doi.org/10.3389/fimmu.2019.01166>
- 8 Stanley, P., Moremen, K.W., Lewis, N.E., Taniguchi, N. and Aebi, M. (2022) *N-Glycans*. Cold Spring Harbor Laboratory Press, Cold Spring Harbor, NY. Available from: <https://www.ncbi.nlm.nih.gov/books/NBK579964/>
- 9 Bojic-Trbojevic, Ž., Krivokuća M, J., Stefanoska, I., Kolundžić, N., Vilotić, A., Kadoya, T. et al. (2018) Integrin  $\beta$ 1 is bound to galectin-1 in human trophoblast. *J. Biochem.* **163**, 39–50 <https://doi.org/10.1093/jb/mvx061>
- 10 Ibetto, L., Antonopoulos, A., Grassi, P., Pang, P.C., Panico, M., Bobdiwala, S. et al. (2020) Insights into the hyperglycosylation of human chorionic gonadotropin revealed by glycomics analysis. *PLoS One* **15**, e0228507 <https://doi.org/10.1371/journal.pone.0228507>
- 11 Ryan, S.O. and Cobb, B.A. (2012) Roles for major histocompatibility complex glycosylation in immune function. *Semin. Immunopathol.* **34**, 425–441 <https://doi.org/10.1007/s00281-012-0309-9>
- 12 Moore, T., Williams, J.M., Becerra-Rodriguez, M.A., Dunne, M., Kammerer, R. and Dveksler, G. (2022) Pregnancy-specific glycoproteins: evolution, expression, functions and disease associations. *Reproduction* **163**, R11–R23 <https://doi.org/10.1530/rep-21-0390>
- 13 Jennewein, M.F., Goldfarb, I., Dolatshahi, S., Cosgrove, C., Noelette, F.J., Krykbaeva, M. et al. (2019) Fc glycan-mediated regulation of placental antibody transfer. *Cell* **178**, 202–215.e14 <https://doi.org/10.1016/j.cell.2019.05.044>
- 14 Clark, G.F. (2014) The role of glycans in immune evasion: the human fetoe embryonic defence system hypothesis revisited. *Mol. Hum. Reprod.* **20**, 185–199 <https://doi.org/10.1093/molehr/gat064>
- 15 Campuzano, M., Bueno-Sanchez, J., Agudelo-Jaramillo, B., Quintana-Castillo, J.C., Chaouat, G.C. and Maldonado-Estrada, J.G. (2020) Glycan expression in chorionic villi from histocultures of women with early-onset preeclampsia: immunomodulatory effects on peripheral natural killer cells. *J. Reprod. Immunol.* **142**, 103212 <https://doi.org/10.1016/j.jri.2020.103212>
- 16 Borowski, S., Tirado-Gonzalez, I., Freitag, N., Garcia, M.G., Barrientos, G. and Blois, S.M. (2020) Altered glycosylation contributes to placental dysfunction upon early disruption of the NK cell-DC dynamics. *Front. Immunol.* **11**, 1316 <https://doi.org/10.3389/fimmu.2020.01316>
- 17 Lauc, G., Pezer, M., Rudan, I. and Campbell, H. (2016) Mechanisms of disease: the human N-glycome. *Biochim. Biophys. Acta* **1860**, 1574–1582 <https://doi.org/10.1016/j.bbagen.2015.10.016>
- 18 Cummings, R.D. (2009) The repertoire of glycan determinants in the human glycome. *Mol. Biosyst.* **5**, 1087–1104 <https://doi.org/10.1039/b907931a>
- 19 Robajac, D., Masnikosa, R., Vanhooren, V., Libert, C., Mikovic, Z. and Nedic, O. (2014) The N-glycan profile of placental membrane glycoproteins alters during gestation and aging. *Mech. Ageing Dev.* **138**, 1–9 <https://doi.org/10.1016/j.mad.2014.01.010>
- 20 Robajac, D., Masnikosa, R., Nemcovic, M., Krizakova, M., Belicka Klukova, L., Barath, P. et al. (2019) Glycoanalysis of the placental membrane glycoproteins throughout placental development. *Mech. Ageing Dev.* **183**, 111151 <https://doi.org/10.1016/j.mad.2019.111151>
- 21 Chen, Q., Pang, P.C., Cohen, M.E., Longtine, M.S., Schust, D.J., Haslam, S.M. et al. (2016) Evidence for differential glycosylation of trophoblast cell types. *Mol. Cell. Proteomics* **15**, 1857–1866 <https://doi.org/10.1074/mcp.M115.055798>
- 22 Deng, Q., Chen, Y., Yin, N., Shan, N., Luo, X., Tong, C. et al. (2015) N-acetylglucosaminyltransferase V inhibits the invasion of trophoblast cells by attenuating MMP2/9 activity in early human pregnancy. *Placenta* **36**, 1291–1299 <https://doi.org/10.1016/j.placenta.2015.08.014>
- 23 Yamamoto, E., Ino, K., Miyoshi, E., Inamori, K., Abe, A., Sumigama, S. et al. (2009) N-acetylglucosaminyltransferase V regulates extravillous trophoblast invasion through glycosylation of  $\alpha$ 5 $\beta$ 1 integrin. *Endocrinology* **150**, 990–999 <https://doi.org/10.1210/en.2008-1005>

- 24 Deng, Q., Liu, X., Yang, Z. and Xie, L. (2019) Expression of N-acetylglucosaminyltransferase III promotes trophoblast invasion and migration in early human placenta. *Reprod. Sci.* **26**, 1373–1381 <https://doi.org/10.1177/1933719118765967>
- 25 Zhao, Y., Nakagawa, T., Itoh, S., Inamori, K., Isaji, T., Kariya, Y. et al. (2006) N-acetylglucosaminyltransferase III antagonizes the effect of N-acetylglucosaminyltransferase V on alpha3beta1 integrin-mediated cell migration. *J. Biol. Chem.* **281**, 32122–32130 <https://doi.org/10.1074/jbc.M607274200>
- 26 Lu, J., Isaji, T., Im, S., Fukuda, T., Kameyama, A. and Gu, J. (2016) Expression of N-acetylglucosaminyltransferase III suppresses  $\alpha$ 2,3-sialylation, and its distinctive functions in cell migration are attributed to  $\alpha$ 2,6-sialylation levels. *J. Biol. Chem.* **291**, 5708–5720 <https://doi.org/10.1074/jbc.M115.712836>
- 27 Yu, M., Cui, X., Wang, H., Liu, J., Qin, H., Liu, S. et al. (2019) FUT8 drives the proliferation and invasion of trophoblastic cells via IGF-1/IGF-1R signaling pathway. *Placenta* **75**, 45–53 <https://doi.org/10.1016/j.placenta.2018.11.005>
- 28 Liao, W.C., Liu, C.H., Chen, C.H., Hsu, W.M., Liao, Y.Y., Chang, H.M. et al. (2015)  $\beta$ -1,4-galactosyltransferase III suppresses extravillous trophoblast invasion through modifying beta1-integrin glycosylation. *Placenta* **36**, 357–364 <https://doi.org/10.1016/j.placenta.2015.01.008>
- 29 Nishino, K., Yamamoto, E., Niimi, K., Sekiya, Y., Yamashita, Y. and Kikkawa, F. (2017) N-acetylglucosaminyltransferase IVa promotes invasion of choriocarcinoma. *Oncol. Rep.* **38**, 440–448 <https://doi.org/10.3892/or.2017.5661>
- 30 Kiyozumi, D., Nakano, I., Sato-Nishiuchi, R., Tanaka, S. and Sekiguchi, K. (2020) Laminin is the ECM niche for trophoblast stem cells. *Life Sci.* **3**, e201900515 <https://doi.org/10.26508/lsa.201900515>
- 31 Damsky, C.H., Fitzgerald, M.L. and Fisher, S.J. (1992) Distribution patterns of extracellular matrix components and adhesion receptors are intricately modulated during first trimester cytotrophoblast differentiation along the invasive pathway, in vivo. *J. Clin. Investig.* **89**, 210–222 <https://doi.org/10.1172/JCI115565>
- 32 Niimi, K., Yamamoto, E., Fujiwara, S., Shinjo, K., Kotani, T., Umezu, T. et al. (2012) High expression of N-acetylglucosaminyltransferase IVa promotes invasion of choriocarcinoma. *Br. J. Cancer* **107**, 1969–1977 <https://doi.org/10.1038/bjc.2012.496>
- 33 Moss, L., Prakobphol, A., Wiedmann, T.W., Fisher, S.J. and Damsky, C.H. (1994) Glycosylation of human trophoblast integrins is stage and cell-type specific. *Glycobiology* **4**, 567–575 <https://doi.org/10.1093/glycob/4.5.567>
- 34 Prast, J., Saleh, L., Husslein, H., Sonderegger, S., Helmer, H. and Knofler, M. (2008) Human chorionic gonadotropin stimulates trophoblast invasion through extracellularly regulated kinase and AKT signaling. *Endocrinology* **149**, 979–987 <https://doi.org/10.1210/en.2007-1282>
- 35 Lee, C.L., Chiu, P.C., Hautala, L., Salo, T., Yeung, W.S., Stenman, U.H. et al. (2013) Human chorionic gonadotropin and its free beta-subunit stimulate trophoblast invasion independent of LH/hCG receptor. *Mol. Cell. Endocrinol.* **375**, 43–52 <https://doi.org/10.1016/j.mce.2013.05.009>
- 36 Tapia-Pizarro, A., Argandoña, F., Palomino, W.A. and Devoto, L. (2013) Human chorionic gonadotropin (hCG) modulation of TIMP1 secretion by human endometrial stromal cells facilitates extravillous trophoblast invasion in vitro. *Hum. Reprod.* **28**, 2215–2227 <https://doi.org/10.1093/humrep/det136>
- 37 Yu, N., Yan, W., Yin, T., Wang, Y., Guo, Y., Zhou, D. et al. (2015) HCG-activated human peripheral blood mononuclear cells (PBMC) promote trophoblast cell invasion. *PLoS One* **10**, e0125589 <https://doi.org/10.1371/journal.pone.0125589>
- 38 Stenman, U.-H., Birken, S., Lempiäinen, A., Hotakainen, K. and Alfthan, H. (2011) Elimination of complement interference in immunoassay of hyperglycosylated human chorionic gonadotropin. *Clin. Chem.* **57**, 1075–1077 <https://doi.org/10.1373/clinchem.2010.159939>
- 39 Kovalevskaya, G., Genbacev, O., Fisher, S.J., Caceres, E. and O'Connor, J.F. (2002) Trophoblast origin of hCG isoforms: cytotrophoblasts are the primary source of choriocarcinoma-like hCG. *Mol. Cell. Endocrinol.* **194**, 147–155 [https://doi.org/10.1016/S0303-7207\(02\)00135-1](https://doi.org/10.1016/S0303-7207(02)00135-1)
- 40 Iwahashi, N., Ikezaki, M., Nishitsuji, K., Yamamoto, M., Matsuzaki, I., Kato, N. et al. (2021) Extracellularly released calreticulin induced by endoplasmic reticulum stress impairs syncytialization of cytotrophoblast model BeWo cells. *Cells* **10**, 1305 <https://doi.org/10.3390/cells10061305>
- 41 Yamamoto, M., Ikezaki, M., Toujima, S., Iwahashi, N., Mizoguchi, M., Nanjo, S. et al. (2017) Calreticulin is involved in invasion of human extravillous trophoblasts through functional regulation of integrin beta1. *Endocrinology* **158**, 3874–3889 <https://doi.org/10.1210/en.2016-1966>
- 42 Hang, Q., Isaji, T., Hou, S., Zhou, Y., Fukuda, T. and Gu, J. (2016) N-glycosylation of integrin alpha5 acts as a switch for EGFR-mediated complex formation of integrin  $\alpha$ 5 $\beta$ 1 to  $\alpha$ 6 $\beta$ 4. *Sci. Rep.* **6**, 33507 <https://doi.org/10.1038/srep33507>
- 43 Isaji, T., Sato, Y., Fukuda, T. and Gu, J. (2009) N-glycosylation of the I-like domain of beta1 integrin is essential for beta1 integrin expression and biological function: identification of the minimal N-glycosylation requirement for  $\alpha$ 5 $\beta$ 1. *J. Biol. Chem.* **284**, 12207–12216 <https://doi.org/10.1074/jbc.M807920200>
- 44 Isaji, T., Sato, Y., Zhao, Y., Miyoshi, E., Wada, Y., Taniguchi, N. et al. (2006) N-glycosylation of the beta-propeller domain of the integrin alpha5 subunit is essential for  $\alpha$ 5 $\beta$ 1 heterodimerization, expression on the cell surface, and its biological function. *J. Biol. Chem.* **281**, 33258–33267 <https://doi.org/10.1074/jbc.M607771200>
- 45 Shi, Z., Hou, W., Hua, X., Zhang, X., Liu, X., Wang, X. et al. (2012) Overexpression of calreticulin in pre-eclamptic placentas: effect on apoptosis, cell invasion and severity of pre-eclampsia. *Cell Biochem. Biophys.* **63**, 183–189 <https://doi.org/10.1007/s12013-012-9350-5>
- 46 Brinkman-Van der Linden, E.C., Hurtado-Ziola, N., Hayakawa, T., Wiggleton, L., Benirschke, K., Varki, A. et al. (2007) Human-specific expression of Siglec-6 in the placenta. *Glycobiology* **17**, 922–931 <https://doi.org/10.1093/glycob/cwm065>
- 47 Patel, N., Brinkman-Van der Linden, E.C., Altmann, S.W., Gish, K., Balasubramanian, S., Timans, J.C. et al. (1999) OB-BP1/Siglec-6 a leptin-and sialic acid-binding protein of the immunoglobulin superfamily. *J. Biol. Chem.* **274**, 22729–22738 <https://doi.org/10.1074/jbc.274.32.22729>
- 48 Dell, A., Morris, H.R., Easton, R.L., Panico, M., Patankar, M., Oehninger, S. et al. (1995) Structural analysis of the oligosaccharides derived from glycodelin, a human glycoprotein with potent immunosuppressive and contraceptive activities. *J. Biol. Chem.* **270**, 24116–24126 <https://doi.org/10.1074/jbc.270.41.24116>
- 49 Lam, K.K., Chiu, P.C., Lee, C.L., Pang, R.T., Leung, C.O., Koistinen, H. et al. (2011) Glycodelin-A protein interacts with Siglec-6 protein to suppress trophoblast invasiveness by down-regulating extracellular signal-regulated kinase (ERK)/c-Jun signaling pathway. *J. Biol. Chem.* **286**, 37118–37127 <https://doi.org/10.1074/jbc.M111.233841>
- 50 Than, N.G., Romero, R., Goodman, M., Weckle, A., Xing, J., Dong, Z. et al. (2009) A primate subfamily of galectins expressed at the maternal–fetal interface that promote immune cell death. *Proc. Natl Acad. Sci. U.S.A.* **106**, 9731–9736 <https://doi.org/10.1073/pnas.0903568106>
- 51 Cerliani, J.P., Blidner, A.G., Toscano, M.A., Croci, D.O. and Rabinovich, G.A. (2017) Translating the ‘Sugar Code’ into immune and vascular signaling programs. *Trends Biochem. Sci.* **42**, 255–273 <https://doi.org/10.1016/j.tibs.2016.11.003>
- 52 Ramhorst, R.E., Giribaldi, L., Fraccaroli, L., Toscano, M.A., Stupirski, J.C., Romero, M.D. et al. (2012) Galectin-1 confers immune privilege to human trophoblast: implications in recurrent fetal loss. *Glycobiology* **22**, 1374–1386 <https://doi.org/10.1093/glycob/cws104>

- 53 Bojic-Trbojevic, Z., Jovanovic Krivokuca, M., Vilotic, A., Kolundzic, N., Stefanoska, I., Zetterberg, F. et al. (2019) Human trophoblast requires galectin-3 for cell migration and invasion. *Sci. Rep.* **9**, 2136 <https://doi.org/10.1038/s41598-018-38374-w>
- 54 Kolundžić, N., Bojić-Trbojević, Ž., Kovačević, T., Stefanoska, I., Kadoya, T. and Vičovac, L. (2011) Galectin-1 is part of human trophoblast invasion machinery—a functional study in vitro. *PLoS One* **6**, e28514 <https://doi.org/10.1371/journal.pone.0028514>
- 55 Jeschke, U., Reimer, T., Bergemann, C., Wiest, I., Schulze, S., Friese, K. et al. (2004) Binding of galectin-1 (gal-1) on trophoblast cells and inhibition of hormone production of trophoblast tumor cells in vitro by gal-1. *Histochem. Cell Biol.* **121**, 501–508 <https://doi.org/10.1007/s00418-004-0660-6>
- 56 Fischer, I., Redel, S., Hofmann, S., Kuhn, C., Friese, K., Walzel, H. et al. (2010) Stimulation of syncytium formation in vitro in human trophoblast cells by galectin-1. *Placenta* **31**, 825–832 <https://doi.org/10.1016/j.placenta.2010.06.016>
- 57 Blois, S.M., Ilarregui, J.M., Tometten, M., Garcia, M., Orsal, A.S., Cordo-Russo, R. et al. (2007) A pivotal role for galectin-1 in fetomaternal tolerance. *Nat. Med.* **13**, 1450–1457 <https://doi.org/10.1038/nm1680>
- 58 Freitag, N., Tirado-Gonzalez, I., Barrientos, G., Powell, K.L., Boehm-Sturm, P., Koch, S.P. et al. (2020) Galectin-3 deficiency in pregnancy increases the risk of fetal growth restriction (FGR) via placental insufficiency. *Cell Death Dis.* **11**, 560 <https://doi.org/10.1038/s41419-020-02791-5>
- 59 Tirado-González, I., Freitag, N., Barrientos, G., Shaikly, V., Nagaeva, O., Strand, M. et al. (2013) Galectin-1 influences trophoblast immune evasion and emerges as a predictive factor for the outcome of pregnancy. *Mol. Hum. Reprod.* **19**, 43–53 <https://doi.org/10.1093/molehr/gas043>
- 60 Freitag, N., Tirado-González, I., Barrientos, G., Cohen, M., Daher, S., Goldman-Wohl, D. et al. (2020) The chimera-type galectin-3 is a positive modulator of trophoblast functions with dysregulated expression in gestational diabetes mellitus. *Am. J. Reprod. Immunol.* **84**, e13311 <https://doi.org/10.1111/aji.13311>
- 61 Menkhorst, E.M., Gamage, T., Cuman, C., Kaitu'u-Lino, T.J., Tong, S. and Dimitriadis, E. (2014) Galectin-7 acts as an adhesion molecule during implantation and increased expression is associated with miscarriage. *Placenta* **35**, 195–201 <https://doi.org/10.1016/j.placenta.2014.01.004>
- 62 Wang, M., Xu, Y., Wang, P., Xu, Y., Jin, P., Wu, Z. et al. (2021) Galectin-14 promotes trophoblast migration and invasion by upregulating the expression of MMP-9 and N-cadherin. *Front. Cell Dev. Biol.* **9**, 645658 <https://doi.org/10.3389/fcell.2021.645658>
- 63 Kolundžić, N., Bojić-Trbojević, Z., Radojčić, L., Petronijević, M. and Vičovac, L. (2011) Galectin-8 is expressed by villous and extravillous trophoblast of the human placenta. *Placenta* **32**, 909–911 <https://doi.org/10.1016/j.placenta.2011.07.087>
- 64 Hoek, M., Demmers, L.C., Wu, W. and Heck, A.J.R. (2021) Allotype-specific glycosylation and cellular localization of human leukocyte antigen class I proteins. *J. Proteome Res.* **20**, 4518–4528 <https://doi.org/10.1021/acs.jproteome.1c00466>
- 65 de Haas, P., Hendriks, W., Lefeber, D.J. and Cambi, A. (2020) Biological and technical challenges in unraveling the role of N-glycans in immune receptor regulation. *Front. Chem.* **8**, 55 <https://doi.org/10.3389/fchem.2020.00055>
- 66 De Bousser, E., Meuris, L., Callewaert, N. and Festjens, N. (2020) Human T cell glycosylation and implications on immune therapy for cancer. *Hum. Vaccines Immunother.* **16**, 2374–2388 <https://doi.org/10.1080/21645515.2020.1730658>
- 67 Ma, Y., Yang, Q., Fan, M., Zhang, L., Gu, Y., Jia, W. et al. (2020) Placental endovascular extravillous trophoblasts (enEVTs) educate maternal T-cell differentiation along the maternal-placental circulation. *Cell Prolif.* **53**, e12802 <https://doi.org/10.1111/cpr.12802>
- 68 Martayan, A., Sibilio, L., Setini, A., Lo Monaco, E., Tremante, E., Fruci, D. et al. (2008) N-linked glycosylation selectively regulates the generic folding of HLA-Cw1. *J. Biol. Chem.* **283**, 16469–16476 <https://doi.org/10.1074/jbc.M709175200>
- 69 Baba, E., Erskine, R., Boyson, J.E., Cohen, G.B., Davis, D.M., Malik, P. et al. (2000) N-linked carbohydrate on human leukocyte antigen-C and recognition by natural killer cell inhibitory receptors. *Hum. Immunol.* **61**, 1202–1218 [https://doi.org/10.1016/s0198-8859\(00\)00184-1](https://doi.org/10.1016/s0198-8859(00)00184-1)
- 70 Vento-Tormo, R., Efremova, M., Botting, R.A., Turco, M.Y., Vento-Tormo, M., Meyer, K.B. et al. (2018) Single-cell reconstruction of the early maternal–fetal interface in humans. *Nature* **563**, 347–353 <https://doi.org/10.1038/s41586-018-0698-6>
- 71 Hiby, S.E., Walker, J.J., O'Shaughnessy, K. M., Redman, C.W., Carrington, M., Trowsdale, J. et al. (2004) Combinations of maternal KIR and fetal HLA-C genes influence the risk of preeclampsia and reproductive success. *J. Exp. Med.* **200**, 957–965 <https://doi.org/10.1084/jem.20041214>
- 72 Hackmon, R., Pinnaduwa, L., Zhang, J., Lye, S.J., Geraghty, D.E. and Dunk, C.E. (2017) Definitive class I human leukocyte antigen expression in gestational placentation: HLA-F, HLA-E, HLA-C, and HLA-G in extravillous trophoblast invasion on placentation, pregnancy, and parturition. *Am. J. Reprod. Immunol.* **77**, e12643 <https://doi.org/10.1111/aji.12643>
- 73 McMaster, M., Zhou, Y., Shorter, S., Kapasi, K., Geraghty, D., Lim, K.H. et al. (1998) HLA-G isoforms produced by placental cytotrophoblasts and found in amniotic fluid are due to unusual glycosylation. *J. Immunol.* **160**, 5922–5928 <https://doi.org/10.4049/jimmunol.160.12.5922>
- 74 Than, N.G., Romero, R., Balogh, A., Karpati, E., Mastrolia, S.A., Staretz-Chacham, O. et al. (2015) Galectins: double-edged swords in the cross-roads of pregnancy complications and female reproductive tract inflammation and neoplasia. *J. Pathol. Transl. Med.* **49**, 181–208 <https://doi.org/10.4132/jptm.2015.02.25>
- 75 Dekkers, G., Treffers, L., Plomp, R., Bentlage, A.E.H., de Boer, M., Koeleman, C.A.M. et al. (2017) Decoding the human immunoglobulin G-glycan repertoire reveals a spectrum of Fc-receptor- and complement-mediated-effector activities. *Front. Immunol.* **8**, 877 <https://doi.org/10.3389/fimmu.2017.00877>
- 76 Roopenian, D.C. and Akilesh, S. (2007) Fc $\gamma$ Rn: the neonatal Fc receptor comes of age. *Nat. Rev. Immunol.* **7**, 715–725 <https://doi.org/10.1038/nri2155>
- 77 Dekkers, G., Bentlage, A.E.H., Plomp, R., Visser, R., Koeleman, C.A.M., Beentjes, A. et al. (2018) Conserved Fc $\gamma$ R- glycan discriminates between fucosylated and afucosylated IgG in humans and mice. *Mol. Immunol.* **94**, 54–60 <https://doi.org/10.1016/j.molimm.2017.12.006>
- 78 Ferrara, C., Grau, S., Jager, C., Sondermann, P., Brunker, P., Waldhauer, I. et al. (2011) Unique carbohydrate-carbohydrate interactions are required for high affinity binding between Fc $\gamma$ RIII and antibodies lacking core fucose. *Proc. Natl Acad. Sci. U.S.A.* **108**, 12669–12674 <https://doi.org/10.1073/pnas.1108455108>
- 79 Einarsdottir, H.K., Selman, M.H., Kapur, R., Scherjon, S., Koeleman, C.A., Deelder, A.M. et al. (2013) Comparison of the Fc glycosylation of fetal and maternal immunoglobulin G. *Glycoconj. J.* **30**, 147–157 <https://doi.org/10.1007/s10719-012-9381-6>
- 80 Borghi, S., Bournazos, S., Thulin, N.K., Li, C., Gajewski, A., Sherwood, R.W. et al. (2020) Fc $\gamma$ Rn, but not Fc $\gamma$ Rs, drives maternal-fetal transplacental transport of human IgG antibodies. *Proc. Natl Acad. Sci. U.S.A.* **117**, 12943–12951 <https://doi.org/10.1073/pnas.2004325117>
- 81 Hu, X., Zhu, Q., Wang, Y., Wang, L., Li, Z., Mor, G. et al. (2020) Newly characterized decidual Tim-3<sup>+</sup> Treg cells are abundant during early pregnancy and driven by IL-27 coordinately with Gal-9 from trophoblasts. *Hum. Reprod.* **35**, 2454–2466 <https://doi.org/10.1093/humrep/deaa223>
- 82 Li, Y.-H., Zhou, W.-H., Tao, Y., Wang, S.-C., Jiang, Y.-L., Zhang, D. et al. (2016) The Galectin-9/Tim-3 pathway is involved in the regulation of NK cell function at the maternal–fetal interface in early pregnancy. *Cell. Mol. Immunol.* **13**, 73–81 <https://doi.org/10.1038/cmi.2014.126>

- 83 Sun, J., Yang, M., Ban, Y., Gao, W., Song, B., Wang, Y. et al. (2016) Tim-3 is upregulated in NK cells during early pregnancy and inhibits NK cytotoxicity toward trophoblast in galectin-9 dependent pathway. *PLoS One* **11**, e0147186 <https://doi.org/10.1371/journal.pone.0147186>
- 84 Kliman, H.J., Sammar, M., Grimpel, Y.I., Lynch, S.K., Milano, K.M., Pick, E. et al. (2012) Placental protein 13 and decidua zones of necrosis: an immunologic diversion that may be linked to preeclampsia. *Reprod. Sci.* **19**, 16–30 <https://doi.org/10.1177/1933719111424445>
- 85 Sammar, M., Dragovic, R., Meiri, H., Vatis, M., Sharabi-Nov, A., Sargent, I. et al. (2018) Reduced placental protein 13 (PP13) in placental derived syncytiotrophoblast extracellular vesicles in preeclampsia - a novel tool to study the impaired cargo transmission of the placenta to the maternal organs. *Placenta* **66**, 17–25 <https://doi.org/10.1016/j.placenta.2018.04.013>
- 86 Vokalova, L., Balogh, A., Toth, E., Van Breda, S.V., Schäfer, G., Hoesli, I. et al. (2020) Placental protein 13 (galectin-13) polarizes neutrophils toward an immune regulatory phenotype. *Front. Immunol.* **11**, 145 <https://doi.org/10.3389/fimmu.2020.00145>
- 87 Than, N.G., Balogh, A., Romero, R., Kárpáti, E., Erez, O., Szilágyi, A. et al. (2014) Placental protein 13 (PP13) - a placental immunoregulatory galectin protecting pregnancy. *Front. Immunol.* **5**, 348 <https://doi.org/10.3389/fimmu.2014.00348>
- 88 Kaminker, J.D. and Timoshenko, A.V. (2021) Expression, regulation, and functions of the galectin-16 gene in human cells and tissues. *Biomolecules* **11**, 1909 <https://doi.org/10.3390/biom11121909>
- 89 Menkhorst, E., Than, N.G., Jeschke, U., Barrientos, G., Szereday, L., Dveksler, G. et al. (2021) Medawar's PostEra: galectins emerged as key players during fetal-maternal glycoimmune adaptation. *Front. Immunol.* **12**, 784473 <https://doi.org/10.3389/fimmu.2021.784473>
- 90 Gendronneau, G., Sidhu, S.S., Delacour, D., Dang, T., Calonne, C., Houzelstein, D. et al. (2008) Galectin-7 in the control of epidermal homeostasis after injury. *Mol. Biol. Cell* **19**, 5541–5549 <https://doi.org/10.1091/mbc.e08-02-0166>
- 91 Lisboa, F.A., Warren, J., Sulkowski, G., Aparicio, M., David, G., Zudaire, E. et al. (2011) Pregnancy-specific glycoprotein 1 induces endothelial tubulogenesis through interaction with cell surface proteoglycans. *J. Biol. Chem.* **286**, 7577–7586 <https://doi.org/10.1074/jbc.M110.161810>
- 92 Ha, C.T., Wu, J.A., Irmak, S., Lisboa, F.A., Dizon, A.M., Warren, J.W. et al. (2010) Human pregnancy specific beta-1-glycoprotein 1 (PSG1) has a potential role in placental vascular morphogenesis. *Biol. Reprod.* **83**, 27–35 <https://doi.org/10.1095/biolreprod.109.082412>
- 93 Rattila, S., Kleefeldt, F., Ballesteros, A., Beltrame JS, M.L.R., Ergün, S. et al. (2020) Pro-angiogenic effects of pregnancy-specific glycoproteins in endothelial and extravillous trophoblast cells. *Reproduction* **160**, 737–750 <https://doi.org/10.1530/rep-20-0169>
- 94 McLellan, A.S., Zimmermann, W. and Moore, T. (2005) Conservation of pregnancy-specific glycoprotein (PSG) N domains following independent expansions of the gene families in rodents and primates. *BMC Evol. Biol.* **5**, 39 <https://doi.org/10.1186/1471-2148-5-39>
- 95 Mendoza, M., Lu, D., Ballesteros, A., Blois, S.M., Abernathy, K., Feng, C. et al. (2020) Glycan characterization of pregnancy-specific glycoprotein 1 and its identification as a novel Galectin-1 ligand. *Glycobiology* **30**, 895–909 <https://doi.org/10.1093/glycob/cwaa034>
- 96 Rattila, S., Dunk, C.E.E., Im, M., Grichenko, O., Zhou, Y., Yanez-Mo, M. et al. (2019) Interaction of pregnancy-specific glycoprotein 1 with integrin A5β1 is a modulator of extravillous trophoblast functions. *Cells* **8**, 1369 <https://doi.org/10.3390/cells8111369>
- 97 Warren, J., Im, M., Ballesteros, A., Ha, C., Moore, T., Lambert, F. et al. (2018) Activation of latent transforming growth factor-β1, a conserved function for pregnancy-specific beta 1-glycoproteins. *Mol. Hum. Reprod.* **24**, 602–612 <https://doi.org/10.1093/molehr/gay044>
- 98 Blois, S.M., Sulkowski, G., Tirado-González, I., Warren, J., Freitag, N., Klapp, B.F. et al. (2014) Pregnancy-specific glycoprotein 1 (PSG1) activates TGF-β and prevents dextran sodium sulfate (DSS)-induced colitis in mice. *Mucosal Immunol.* **7**, 348–358 <https://doi.org/10.1038/mi.2013.53>
- 99 Chen, J. and Khalil, R.A. (2017) Matrix metalloproteinases in normal pregnancy and preeclampsia. *Prog. Mol. Biol. Transl. Sci.* **148**, 87–165 <https://doi.org/10.1016/bs.pmbts.2017.04.001>
- 100 Isaka, K., Usuda, S., Ito, H., Sagawa, Y., Nakamura, H., Nishi, H. et al. (2003) Expression and activity of matrix metalloproteinase 2 and 9 in human trophoblasts. *Placenta* **24**, 53–64 <https://doi.org/10.1053/plac.2002.0867>
- 101 Cui, Y., Wang, W., Dong, N., Lou, J., Srinivasan, D.K., Cheng, W. et al. (2012) Role of corin in trophoblast invasion and uterine spiral artery remodelling in pregnancy. *Nature* **484**, 246–250 <https://doi.org/10.1038/nature10897>
- 102 Liao, X., Wang, W., Chen, S. and Wu, Q. (2007) Role of glycosylation in corin zymogen activation. *J. Biol. Chem.* **282**, 27728–27735 <https://doi.org/10.1074/jbc.M703687200>
- 103 Burger, O., Pick, E., Zwickel, J., Klayman, M., Meiri, H., Slotky, R. et al. (2004) Placental protein 13 (PP-13): effects on cultured trophoblasts, and its detection in human body fluids in normal and pathological pregnancies. *Placenta* **25**, 608–622 <https://doi.org/10.1016/j.placenta.2003.12.009>
- 104 Sammar, M., Drobnjak, T., Mandala, M., Gizurarson, S., Huppertz, B. and Meiri, H. (2019) Galectin 13 (PP13) facilitates remodeling and structural stabilization of maternal vessels during pregnancy. *Int. J. Mol. Sci.* **20**, 3192 <https://doi.org/10.3390/ijms20133192>
- 105 Gizurarson, S., Huppertz, B., Osol, G., Skarphedinsson, J.O., Mandala, M. and Meiri, H. (2013) Effects of placental protein 13 on the cardiovascular system in gravid and non-gravid rodents. *Fetal Diagn. Ther.* **33**, 257–264 <https://doi.org/10.1159/000345964>
- 106 Drobnjak, T., Gizurarson, S., Gokina, N.I., Meiri, H., Mandala, M., Huppertz, B. et al. (2017) Placental protein 13 (PP13)-induced vasodilation of resistance arteries from pregnant and nonpregnant rats occurs via endothelial-signaling pathways. *Hypertens Pregnancy* **36**, 186–195 <https://doi.org/10.1080/10641955.2017.1295052>
- 107 Li, A., Dubey, S., Varney, M.L., Dave, B.J. and Singh, R.K. (2003) IL-8 directly enhanced endothelial cell survival, proliferation, and matrix metalloproteinases production and regulated angiogenesis. *J. Immunol.* **170**, 3369–3376 <https://doi.org/10.4049/jimmunol.170.6.3369>
- 108 Balogh, A., Toth, E., Romero, R., Parej, K., Csala, D., Szenasi, N.L. et al. (2019) Placental galectins are key players in regulating the maternal adaptive immune response. *Front. Immunol.* **10**, 1240 <https://doi.org/10.3389/fimmu.2019.01240>
- 109 Zhang, M., Wang, M., Gao, R., Liu, X., Chen, X., Geng, Y. et al. (2015) Altered beta1,6-GlcNAc and bisecting GlcNAc-branched N-glycan on integrin beta1 are associated with early spontaneous miscarriage in humans. *Hum. Reprod.* **30**, 2064–2075 <https://doi.org/10.1093/humrep/dev153>
- 110 Marini, M., Bonaccini, L., Thyron, G.D., Vichi, D., Parretti, E. and Sgambati, E. (2011) Distribution of sugar residues in human placentas from pregnancies complicated by hypertensive disorders. *Acta Histochem.* **113**, 815–825 <https://doi.org/10.1016/j.acthis.2010.12.001>
- 111 Tannetta, D., Masliukaite, I., Vatis, M., Redman, C. and Sargent, I. (2017) Update of syncytiotrophoblast derived extracellular vesicles in normal pregnancy and preeclampsia. *J. Reprod. Immunol.* **119**, 98–106 <https://doi.org/10.1016/j.jri.2016.08.008>
- 112 Sukhikh, G.T., Ziganshina, M.M., Nizyaeva, N.V., Kulikova, G.V., Volkova, J.S., Yarotskaya, E.L. et al. (2016) Differences of glycocalyx composition in the structural elements of placenta in preeclampsia. *Placenta* **43**, 69–76 <https://doi.org/10.1016/j.placenta.2016.05.002>
- 113 Freitag, N., Tirado-Gonzalez, I., Barrientos, G., Herse, F., Thijssen, V.L., Weedon-Fekjaer, S.M. et al. (2013) Interfering with Gal-1-mediated angiogenesis contributes to the pathogenesis of preeclampsia. *Proc. Natl Acad. Sci. U.S.A.* **110**, 11451–11456 <https://doi.org/10.1073/pnas.1303707110>

- 114 Deng, Q., Chen, Y., Yin, N., Shan, N., Luo, X., Yuan, Y. et al. (2017) The role of MGAT5 in human umbilical vein endothelial cells. *Reprod. Sci.* **24**, 313–323 <https://doi.org/10.1177/1933719116655602>
- 115 Deng, Q., Yin, N., Chen, Y., Shan, N., Liu, X. and Qi, H. (2019) Downregulated N-acetylglucosaminyltransferase III is involved in attenuating trophoblast migration and invasion under hypoxia-reoxygenation condition. *J. Matern.-Fetal Neonatal Med.* **32**, 2369–2375 <https://doi.org/10.1080/14767058.2018.1438392>
- 116 Mizuochi, T., Nishimura, R., Derappe, C., Taniguchi, T., Hamamoto, T., Mochizuki, M. et al. (1983) Structures of the asparagine-linked sugar chains of human chorionic gonadotropin produced in choriocarcinoma. Appearance of triantennary sugar chains and unique biantennary sugar chains. *J. Biol. Chem.* **258**, 14126–14129 [https://doi.org/10.1016/S0021-9258\(17\)43832-4](https://doi.org/10.1016/S0021-9258(17)43832-4)
- 117 Fournier, T., Guibourdenche, J. and Evain-Brion, D. (2015) Review: hCGs: different sources of production, different glycoforms and functions. *Placenta* **36**, S60–S65 <https://doi.org/10.1016/j.placenta.2015.02.002>
- 118 Guibourdenche, J., Handschuh, K., Tsatsaris, V., Gerbaud, P., Leguy, M.C., Muller, F. et al. (2010) Hyperglycosylated hCG is a marker of early human trophoblast invasion. *J. Clin. Endocrinol. Metab.* **95**, E240–E244 <https://doi.org/10.1210/jc.2010-0138>
- 119 Rumer, K.K., Uyenishi, J., Hoffman, M.C., Fisher, B.M. and Winn, V.D. (2013) Siglec-6 expression is increased in placentas from pregnancies complicated by preterm preeclampsia. *Reprod. Sci.* **20**, 646–653 <https://doi.org/10.1177/1933719112461185>
- 120 Awoyemi, T., Tannetta, D., Zhang, W., Kandzija, N., Motta-Mejia, C., Fischer, R. et al. (2020) Glycosylated Siglec-6 expression in syncytiotrophoblast-derived extracellular vesicles from preeclampsia placentas. *Biochem. Biophys. Res. Commun.* **533**, 838–844 <https://doi.org/10.1016/j.bbrc.2020.09.081>
- 121 Burton, G.J., Woods, A.W., Jauniaux, E. and Kingdom, J.C.P. (2009) Rheological and physiological consequences of conversion of the maternal spiral arteries for uteroplacental blood flow during human pregnancy. *Placenta* **30**, 473–482 <https://doi.org/10.1016/j.placenta.2009.02.009>
- 122 Spencer, K., Cowans, N.J., Chefetz, I., Tal, J. and Meiri, H. (2007) First-trimester maternal serum PP-13. PAPP-A and second-trimester uterine artery Doppler pulsatility index as markers of pre-eclampsia. *Ultrasound Obstet. Gynecol.* **29**, 128–134 <https://doi.org/10.1002/uog.3876>
- 123 Romero, R., Kusanovic, J.P., Than, N.G., Erez, O., Gotsch, F., Espinoza, J. et al. (2008) First-trimester maternal serum PP13 in the risk assessment for preeclampsia. *Am. J. Obstet. Gynecol.* **199**, 122.e1–122.e11 <https://doi.org/10.1016/j.ajog.2008.01.013>
- 124 Nicolaides, K.H., Bindra, R., Turan, O.M., Chefetz, I., Sammar, M., Meiri, H. et al. (2006) A novel approach to first-trimester screening for early pre-eclampsia combining serum PP-13 and Doppler ultrasound. *Ultrasound Obstet. Gynecol.* **27**, 13–17 <https://doi.org/10.1002/uog.2686>
- 125 Chafetz, I., Kuhnreich, I., Sammar, M., Tal, Y., Gibor, Y., Meiri, H. et al. (2007) First-trimester placental protein 13 screening for preeclampsia and intrauterine growth restriction. *Am. J. Obstet. Gynecol.* **197**, 35.e1–35.e7 <https://doi.org/10.1016/j.ajog.2007.02.025>
- 126 Than, N.G., Abdul Rahman, O., Magenheim, R., Nagy, B., Fule, T., Hargitai, B. et al. (2008) Placental protein 13 (galectin-13) has decreased placental expression but increased shedding and maternal serum concentrations in patients presenting with preterm pre-eclampsia and HELLP syndrome. *Virchows Arch.* **453**, 387–400 <https://doi.org/10.1007/s00428-008-0658-x>
- 127 Sammar, M., Nisemblat, S., Fleischfarb, Z., Golan, A., Sadan, O., Meiri, H. et al. (2011) Placenta-bound and body fluid PP13 and its mRNA in normal pregnancy compared to preeclampsia, HELLP and preterm delivery. *Placenta* **32**, S30–S36 <https://doi.org/10.1016/j.placenta.2010.09.006>
- 128 Lee, C.L., Chiu, P.C., Pang, P.C., Chu, I.K., Lee, K.F., Koistinen, R. et al. (2011) Glycosylation failure extends to glycoproteins in gestational diabetes mellitus: evidence from reduced  $\alpha$ 2-6 sialylation and impaired immunomodulatory activities of pregnancy-related glycodelin-A. *Diabetes* **60**, 909–917 <https://doi.org/10.2337/db10-1186>
- 129 Sharma, S., Banerjee, S., Krueger, P.M. and Blois, S.M. (2022) Immunobiology of gestational diabetes mellitus in post-Medawar era. *Front. Immunol.* **12**, 758267 <https://doi.org/10.3389/fimmu.2021.758267>
- 130 Hepp, P., Unverdorben, L., Hutter, S., Kuhn, C., Ditsch, N., Groß, E. et al. (2020) Placental galectin-2 expression in gestational diabetes: a systematic, histological analysis. *Int. J. Mol. Sci.* **21**, 2404 <https://doi.org/10.3390/ijms21072404>
- 131 Blois, S.M., Gueuvoghlian-Silva, B.Y., Tirado-González, I., Torloni, M.R., Freitag, N., Mattar, R. et al. (2014) Getting too sweet: galectin-1 dysregulation in gestational diabetes mellitus. *Mol. Hum. Reprod.* **20**, 644–649 <https://doi.org/10.1093/molehr/gau021>
- 132 Unverdorben, L., Haufe, T., Santoso, L., Hofmann, S., Jeschke, U. and Hutter, S. (2016) Prototype and chimera-type galectins in placentas with spontaneous and recurrent miscarriages. *Int. J. Mol. Sci.* **17**, 644 <https://doi.org/10.3390/ijms17050644>
- 133 Božić, M., Petronijević, M., Milenković, S., Atanacković, J., Lazić, J. and Vičovac, L. (2004) Galectin-1 and galectin-3 in the trophoblast of the gestational trophoblastic disease. *Placenta* **25**, 797–802 <https://doi.org/10.1016/j.placenta.2004.03.006>
- 134 Birken, S., Krichevsky, A., O'Connor, J., Schlatterer, J., Cole, L., Kardana, A. et al. (1999) Development and characterization of antibodies to a nicked and hyperglycosylated form of hCG from a choriocarcinoma patient. *Endocrine* **10**, 137–144 <https://doi.org/10.1385/ENDO:10:2:137>
- 135 Elliott, M.M., Kardana, A., Lustbader, J.W. and Cole, L.A. (1997) Carbohydrate and peptide structure of the  $\alpha$ - and  $\beta$ -subunits of human chorionic gonadotropin from normal and aberrant pregnancy and choriocarcinoma. *Endocrine* **7**, 15–32 <https://doi.org/10.1007/BF02778058>
- 136 King, J.R., Wilson, M.L., Hetey, S., Kiraly, P., Matsuo, K., Castaneda, A.V. et al. (2019) Dysregulation of placental functions and immune pathways in complete hydatidiform moles. *Int. J. Mol. Sci.* **20**, 4999 <https://doi.org/10.3390/ijms20204999>