

# Copolymerization of ethylene with norbornene by using metallocene/TIBA/B(C<sub>6</sub>F<sub>5</sub>)<sub>3</sub> system

Wei Wang\*, Shuzhang Qu, Xinwei Li, Jian Chen, Xiaolei Wang, Cui Zheng, Min Guo, Ying Wang

SINOPEC (Beijing) Research Institute of Chemical Industry Co., Ltd., No. 14 Beisanhuan Donglu, Chao Yang District, Beijing (100013), China

Received: 9 December 2022, Accepted: 27 December 2022

## ABSTRACT

Cyclic olefin copolymer is a type of high performance polyolefin material, which is prepared by using a single-site catalyst in solution polymerization. The common activator of this system is alkyl aluminoxane or organic boron/aluminum system. Among them, organic boron is mostly triphenylcarbenium tetrakis(pentafluorophenyl)borate or dimethylanilinium tetrakis(pentafluorophenyl)borate. In this study, ethylene and norbornene were copolymerized with metallocene catalyst activated with the combination of tris(pentafluorophenyl)boron and triisobutylaluminium. Compared with homopolymerization of ethylene, copolymerization shows high activity. The molecular weight of the polymer increased significantly with the increase of the insertion rate of norbornene. Fineman-Ross method was used to calculate the reactivity ratio, which showed that the reactivity ratio of norbornene was much lower than that of ethylene. The high copolymerization activity may indicate that, although norbornene has a lower coordination probability, its insertion rate is higher than ethylene. The copolymer with higher norbornene incorporation has a higher glass transition temperature, and the relationship between them is linear. *Polyolefins J* (2023) 10: 71-77

**Keywords:** Cyclic olefin copolymer; metallocene; norbornene; organic borate; glass transition temperature.

## INTRODUCTION

In recent decades, great attention has been paid to the development of single-site catalysts represented by metallocene for olefin polymerization [1-3]. Because of the unique high efficiency of copolymerization and universality of comonomer selection of metallocene and other single-site catalyst, olefin polymer which cannot be obtained by Ziegler-Natta catalyst can be obtained by using these new generation catalysts [4].

Both the homopolymer and copolymer of cyclic olefin (COP and COC) are important examples [5-15]. The copolymerization of  $\alpha$ -olefin and cyclic olefin is realized by coordination polymerization, and the main chain of the obtained COC contains a large number of rigid rings. Therefore, COC has the characteristics of high glass transition temperature ( $T_g$ ) and non-crystallization, which makes it have excellent heat resistance, barrier,

\*Corresponding Author - E-mail: wangw.bjhy@sinopec.com

transparency, size stability and other properties, so it can be used in optical devices and pharmaceutical packaging. The most common COC is the copolymer of ethylene and norbornene (NBE) or tetracyclododecene (TCD), which are also components of commercial COCs. [16] The metallocene/single-site catalyst is usually used for the copolymerization of ethylene and norbornene by activation with MAO or organic boron/aluminum cocatalyst. [17-24] MAO is a very efficient cocatalyst, but it has the problem of high cost, and its high dosage will also cause the problem of high inorganic ash in the polymer. Therefore, the combination of organic boron/aluminum cocatalyst is a good choice. Among them, triphenylcarbenium tetrakis(pentafluorophenyl) borate (Ph<sub>3</sub>C<sup>+</sup>-B(C<sub>6</sub>F<sub>5</sub>)<sub>4</sub><sup>-</sup>) [25] and dimethylanilinium tetrakis(pentafluorophenyl)borate (PhNMe<sub>2</sub>H<sup>+</sup>-B(C<sub>6</sub>F<sub>5</sub>)<sub>4</sub><sup>-</sup>) [26] are most commonly used in organic boron. The simple compound, tris(pentafluorophenyl) borane (B(C<sub>6</sub>F<sub>5</sub>)<sub>3</sub>) [27,28], is not often used. [29-31].

In the present work, copolymerization of ethylene with norbornene was conducted by using a metallocene combined with triisobutylaluminum/B(C<sub>6</sub>F<sub>5</sub>)<sub>3</sub>. The high activity of copolymerization was observed, and the copolymer with high molecular weight and high norbornene incorporation was achieved.

## EXPERIMENTAL

### Materials

All experiments were carried out under a nitrogen atmosphere in a Vacuum Atmospheres drybox or using standard Schlenk techniques, unless otherwise specified. All chemicals used were of reagent grade and were purified by standard purification procedures. Toluene was distilled in the presence of sodium and benzophenone under a nitrogen atmosphere, and was stored in a Schlenk tube in the drybox over molecular sieves. Metallocene catalyst Ph<sub>2</sub>C(Cp)(Flu)ZrCl<sub>2</sub> was purchased from APAC Pharmaceutical. Norbornene was purchased from Alfa, tris(pentafluorophenyl) borane (B(C<sub>6</sub>F<sub>5</sub>)<sub>3</sub>) from Strem, triisobutylaluminum (TIBA) from Acros, and used as received.

Polymerization was conducted in toluene in a 250 mL glass reactor with an oil bath at 70°C. Glass reactor

was purged with nitrogen and charged with an ethylene atmosphere (1 atm). Toluene, NBE solution in toluene, TIBA and the catalyst solution in toluene were introduced in this order. And then the toluene solution of tris(pentafluorophenyl)borane was injected to start the polymerization. The mixture was stirred magnetically for 20 minutes. And then the mixture was poured into EtOH (300 mL) containing HCl (10 mL). The resultant polymer was collected on a filter paper by filtration, washed thoroughly with EtOH, and was then dried in vacuo.

The molecular weight was determined by gel permeation chromatography (GPC) on a Waters Alliance GPCV2000 at 150°C with 1,2,4-trichlorobenzene as the eluent.

The glass transition temperature of the polymer was determined on TAQ 100. Approximately 2 mg of the polymer sample was heated from 25 to 200°C with a heating rate of 10°C per minute, under a nitrogen atmosphere. After keeping the temperature for 1 minute, the sample was cooled down to 25°C, and kept the temperature for 1 minute again. Then sample was heated to 200°C with a heating rate of 10°C per minute and the data was recorded.

Solution <sup>13</sup>C NMR experiments were performed on a Bruker AVANCEIII-400 MHz spectrometer with a 10 mm PASEX <sup>13</sup>C-1H/D Z-GRD probe. Sample solutions were prepared with approximately 250 mg of the polymer material dissolved in 2.5 mL of d<sub>4</sub>-o-dichlorobenzene (ODCB-d<sub>4</sub>) in a 10mm tube at 130°C. All <sup>13</sup>C NMR experiments were carried out at 125°C, 20 Hz spinning rate, 90° pulse angle, continuous Waltz-16 decoupling, 120 ppm spectral width, 5 s acquisition time, and 10 s relaxation delay.

## RESULTS AND DISCUSSION

Tris(pentafluorophenyl)borane was combined with triisobutylaluminum (TIBA) to use as the cocatalyst of metallocene to copolymerize ethylene with NBE. The results are summarized in Table 1.

Under the current experimental conditions, ethylene homopolymerization gave a very low activity, which is different from the high activity of the polymerization activated by MAO. [4] Compared with the more

**Table 1.** Copolymerization of ethylene with norbornene by using  $\text{Ph}_2\text{C}(\text{Cp})(\text{Flu})\text{ZrCl}_2/\text{TIBA}/\text{B}(\text{C}_6\text{F}_5)_3$ <sup>(a)</sup>

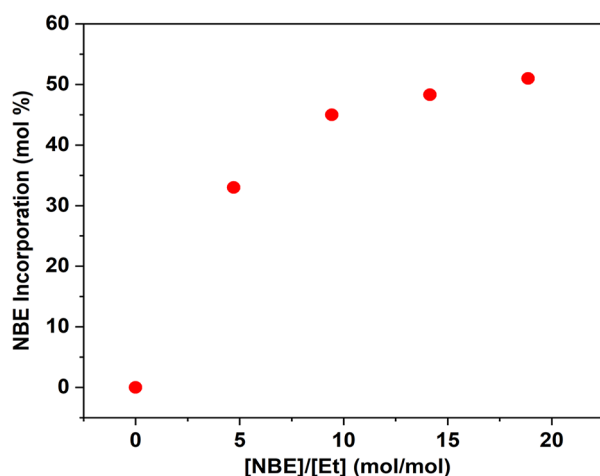
Run	NBE/Et <sup>(b)</sup>	Yield (g)	A <sup>(c)</sup>	Incorpor <sup>(d)</sup> (mol %)	M <sub>w</sub> <sup>(e)</sup> (k)	PDI <sup>(e)</sup>	T <sub>g</sub> <sup>(f)</sup> (°C)
1	0	0.04	24	--	9.5	1.7	--
2	4.7	1.02	612	33.0	26.0	2.1	62.2
3	9.4	1.70	1020	45.0	61.1	2.0	116.6
4	14.2	1.23	738	48.3	83.1	2.2	137.3
5	18.9	1.08	648	51.0	89.0	2.2	149.7

<sup>(a)</sup> Catalyst  $\text{Ph}_2\text{C}(\text{Cp})(\text{Flu})\text{ZrCl}_2$  5 mmol, TIBA 0.5 mmol,  $\text{B}(\text{C}_6\text{F}_5)_3$  6 mmol, 70°C, 20 min, ethylene 1 atm, in toluene, total 30 mL. <sup>(b)</sup> molar ratio of NBE to ethylene in the liquid phase, calculated based on references [32-34]. <sup>(c)</sup> activity in kg-polymer/mol-cat/hr. <sup>(d)</sup> NBE incorporation determined by using <sup>13</sup>C-NMR. <sup>(e)</sup> GPC data. <sup>(f)</sup> DSC data

commonly used organic boron,  $\text{Ph}_3\text{C}^+[\text{B}(\text{C}_6\text{F}_5)_4]^-$  and  $\text{PhNMe}_2\text{H}^+[\text{B}(\text{C}_6\text{F}_5)_4]^-$ ,  $\text{B}(\text{C}_6\text{F}_5)_3$  have a worse activation efficiency for ethylene polymerization. Previous study [35] has shown that the stability of the active site formed by  $\text{B}(\text{C}_6\text{F}_5)_3$  and metallocene is worse. In order to obtain better activity, a higher ratio of  $\text{B}(\text{C}_6\text{F}_5)_3$  to catalyst is needed. However, the introduction of NBE significantly increased the activity, which proved the effectiveness of the system for ethylene-NBE copolymerization. However, the activity does not show a concise rule related to the feed amount of NBE. After the activity reaches a peak, the activity will decrease if the feed amount of NBE continues to increase.

The incorporation of NBE could be determined by using <sup>13</sup>C-NMR, and the incorporation of NBE was increased with the increase of NBE feed. The relationship of NBE incorporation to the molar ratio of NBE to ethylene in the liquid phase is illustrated in Figure 1.

According to the understanding of polymerization kinetics [36], the following relations can be obtained:

**Figure 1.** Copolymer composition curve.

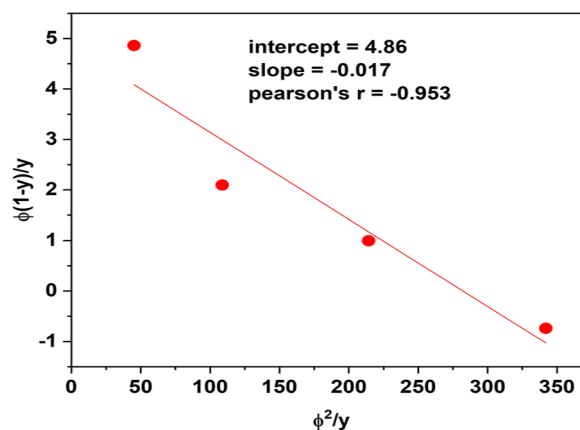
$$\left(\frac{M_2}{M_1}\right)_P = \frac{M_2}{M_1} \frac{(1 + r_2 \frac{M_2}{M_1})}{(r_1 + \frac{M_2}{M_1})} \quad (1)$$

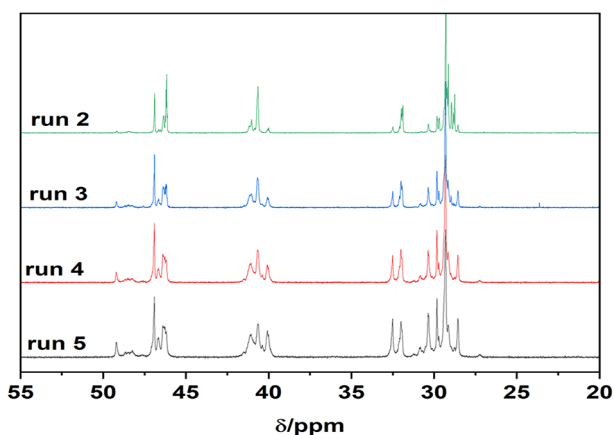
where  $(M_2/M_1)_P$  and  $M_2/M_1$  are the NBE/ethylene molar ratios ( $[\text{NBE}]/[\text{Et}]$ ) in the polymer and the reaction liquid phase, respectively. And  $r_1$  and  $r_2$  are the reactivity ratios of ethylene and NBE, respectively. Then according to the following Fineman-Ross equation, the reactivity ratios could be calculated based on the plot in Figure 2.

$$\frac{1-y}{y} \phi = r_1 - r_2 \frac{\phi^2}{y} \quad (2)$$

where  $y = (M_2/M_1)_P$  and  $\phi = M_2/M_1$ .

Results of  $r_1 = 4.86$  and  $r_2 = 0.017$  meant that the insertion of NBE is more different from the insertion of ethylene. However, the introduction of NBE did not decrease the polymerization activity, but increased it greatly. This may indicate that the low reactivity ratio of norbornene is only possible in the coordina-

**Figure 2.** Fineman-Ross plot of ethylene-norbornene copolymer.



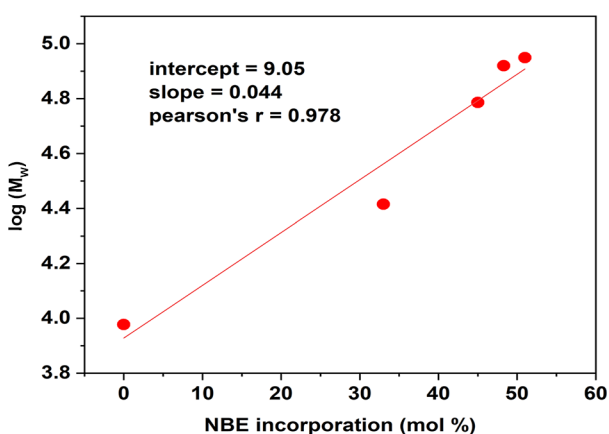
**Figure 3.** <sup>13</sup>C-NMR spectra of ethylene-norbornene copolymers.

tion probability. Once the coordination is successful, the insertion rate of norbornene should be higher than that of ethylene, because the cyclic structure of norbornene has a strong tendency to release the tension of the ring to obtain a thermodynamically more stable structure.

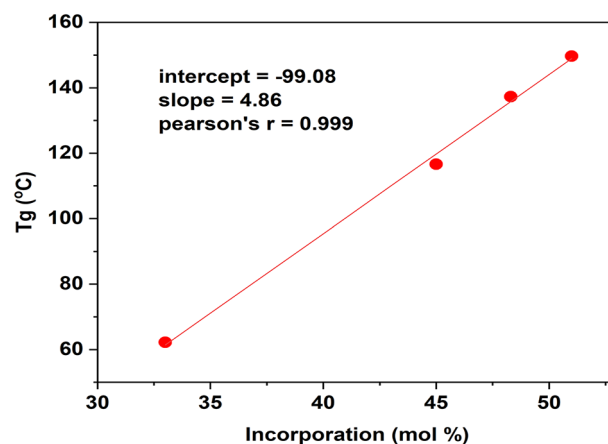
Figure 3 gives the <sup>13</sup>C-NMR spectra of the copolymers of ethylene with NBE (run 2-5). NBE incorporation could be calculated by using the reported method [6, 8, 37-40].

With the increase of NBE feed, not only the NBE incorporation increased, but also the molecular weight and glass transition temperature of the copolymer increased.

Figure 4 shows that the logarithm of the molecular weight almost linearly built up over the increase of the NBE incorporation. The molecular weight of copolymer in most catalytic systems would decrease with the



**Figure 4.** Relationship between the molecular weight and the NBE incorporation



**Figure 5.** Relationship between the glass transition temperature and the NBE incorporation.

increase of comonomer feed, because the comonomer usually serves also as a chain transfer agent. In the present system, the increase of NBE feed does not increase the probability of the chain transfer.

Figure 5 shows that, the glass transition temperature showed a high linear correlation with the incorporation of NBE. The relationship could be expressed as following:

$$T_g = 4.86 \times I_{NB} - 99.08 \quad (3)$$

However, the parameters of this relationship do not apply to other catalyst systems. For example, the previous research gave the linear relationship with different parameters as following [36]:

$$T_g = 3.3751 \times I_{NB} - 41.4 \quad (4)$$

When the catalytic system is different, the parameters of the linear relationship are different. Polymers obtained from different catalytic systems would not give a good linear relationship. It could be possible to conclude that the catalyst system determines the comonomer distribution in the polymer chain. Different catalysts gave different comonomer distributions. Therefore, the regression parameters are not universal.

## CONCLUSIONS

In this work, copolymerization of ethylene with norbornene by using a metallocene combined with

the cocatalyst of organic borate/aluminum was conducted. For the present system, copolymerization showed significantly higher activity than that of ethylene homopolymerization. The copolymerization gave a copolymer with high molecular weight, as well as the high incorporation of norbornene. The reactivity ratios of 4.86 for ethylene and 0.017 for norbornene, respectively, were obtained by using Fineman-Ross equation. The higher activity at high norbornene feed concentration may indicate the lower coordination probability but higher insertion rate. Glass transition temperature increased with increasing incorporation, and the relationship between them was linear. Nevertheless, the regression parameters were different from the previous report.

## ACKNOWLEDGEMENTS

This work was supported by National Natural Science Foundation of China (NSFC, U22B6012).

## CONFLICTS OF INTEREST STATEMENT

The authors declare that they have no conflicts of interest.

## REFERENCES

- Gibson VC, Spitzmesser SK (2003) Advances in non-metallocene olefin polymerization catalysis. *Chem Rev* 103: 283-315
- Kaminsky W (2001) Olefin polymerization catalyzed by metallocenes. *Adv Catal* 46: 89-159
- Hamielec AE, Soares JBP (1996) Polymerization reaction engineering - metallocene catalysts. *Prog Polym Sci* 21: 651-706
- Wang W, Hou L, Zhang T (2020) Integrated effect of comonomer and catalyst on copolymerization of ethylene with allylcyclopentane or allylcyclohexane by using metallocene catalysts. *Chemistry Select* 5: 7581-7585
- Brauer E, Wiegleb H, Helmstedt M (1986) Characterization of ethylene homo- and copolymers. *V. Molecular characterization of (norbornene-ethylene) copolymers by size-exclusion chromatography, viscosimetry and osmometry. Polym Bull* 15: 551-557
- Ruchatz D, Fink G (1998) Ethene-norbornene copolymerization using homogenous metallocene and half-sandwich catalysts: Kinetics and relationships between catalyst structure and polymer structure. 2. Comparative study of different metallocene- and half-sandwich/methylaluminoxane catalysts and analysis of the copolymers by  $^{13}\text{C}$  nuclear magnetic resonance spectroscopy. *Macromolecules* 31: 4674-4680
- Tritto I, Boggioni L, Sacchi MC, Locatelli P, Ferro DR, Provasoli A (1999) Ethylene-norbornene copolymers prepared with metallocene-based catalysts. New sequence assignments by  $^{13}\text{C}$  NMR. *Macromol Rapid Commun* 20: 279-283
- Boggioni L, Losio S, Tritto I (2018) Microstructure of copolymers of norbornene based on assignments of  $^{13}\text{C}$  NMR spectra: evolution of a methodology. *Polymers* 10: 647/1-647/24
- Boggioni L, Tritto I (2013) Polyolefins with cyclic comonomers. *Adv Polym Sci* 258: 117-142
- Lago WSR, Aymes-Chodur C, Ahoussou AP, Yagoubi N (2017) Physico-chemical ageing of ethylene-norbornene copolymers: A review. *J Mater Sci* 52: 6879-6904
- Soleimannezhad A, Mortazavi SMM, Ahmadjo S, Mansouri S, Rashedi R (2022) Study on polymerization conditions in homo- and copolymer syntheses of norbornene/1-hexene with nickel-based late-transition metal catalyst. *Iran Polym J* 31: 237-245
- Shakeri SE, Mortazavi SMM, Ahmadjo S, Zohuri GH (2022) Synthesis and gas permeation of polynorbornene by dinuclear  $\alpha$ -diimine Ni-based catalysts: Experimental and quantum chemistry modeling. *J Polym Res* 29: 201
- Samira M, Omidvar M, Soleimannezhad A, Shakeri SE, Mortazavi SMM, Ahmadjo S (2022) Copolymerization of cyclic monomers by nickel  $\alpha$ -diimine catalysts: Catalyst structure, polymer characterization. *J Polym Res* 29: 409
- Mansouri S, Omidvar M, Mortazavi SMM,



- Ahmadjo S (2022) 5-Ethylidene-2-norbornene Polymerization by  $\alpha$ -diimine nickel catalyst: A revealing insight into the pivotal function of binuclear and mononuclear catalyst structure in tailoring polymer architecture. *Macromol React Eng* 16: 2100052
15. Shakeri SE, Mortazavi SMM, Ahmadjo S, Zohuri GH (2020) Comparison of mono and dinuclear  $\alpha$ -diimine Ni-based catalysts for synthesis of polynorbornene and its microstructure study. *J Macromol Sci A* 57: 837-843
  16. Land HT, Osan F, Wehrmeister T (1997) TOPAS - new cycloolefin copolymers applying metallocene technology. *Polym Mater Sci Eng* 76: 22-23
  17. Kaminsky W, Arndt M, Beulich I (1997) New materials and kinetic aspects by copolymerization of cyclic olefins with metallocene catalysts. *Polym Mater Sci Eng* 76: 18-19
  18. Zeng Y, Mahmood Q, Zhang Q, Liang T, Sun W (2018) Highly thermo-stable and electronically controlled palladium precatalysts for vinyl homo/co-polymerization of norbornene-ethylene. *Eur Polym J* 103: 342-350
  19. Nomura K, Oshima M, Mitsudome T, Hara-kawa H, Hao P, Tsutsumi K, Nagai G, Ina To, Takaya H, Sun, W, Yamazoe S (2017) Synthesis and structural analysis of (imido)vanadium dichloride complexes containing 2-(2'-Benzimidazolyl)pyridine ligands: Effect of Al cocatalyst for efficient ethylene (co) polymerization. *ACS Omega* 2: 8660-8673
  20. Pei L, He S, Gao J, Liao H, Gao H (2017) Homo- and copolymerizations of ethylene and norbornene using bis( $\beta$ -ketoamino) titanium catalysts containing pyrazolone rings. *Polymers* 9: 262/1-262/12
  21. Nomura K, Izawa I, Kuboki M, Inoue K, Aoki H, Tsutsumi K (2022) Solution XAS analysis for reactions of phenoxide-modified (arylimido) vanadium(V) dichloride and (oxo)vanadium(V) complexes with Al alkyls: Effect of Al cocatalyst in ethylene (co)polymerization. *Catalysts* 12: 198
  22. Wang W, Nomura K (2005) Remarkable effects of aluminum cocatalyst and comonomer in ethylene copolymerizations catalyzed by (arylimido) (aryloxo)vanadium complexes: Efficient synthesis of high molecular weight ethylene/norbornene copolymer. *Macromolecules* 38: 5905-5913
  23. Marconi R, Ravasio A, Boggioni L, Tritto I (2009) Silyl-terminated ethylene-co-norbornene copolymers by organotitanium-based catalysts. *Macromol Rapid Commun* 30: 39-44
  24. Boggioni L, Sidari D, Losio S, Stehling UM, Auriemma F, Di Girolamo R, De Rosa C, Tritto I (2018) Ethylene-co-norbornene copolymerization in the presence of a chain transfer agent. *Eur Polym J* 107: 54-66
  25. Chien JCW, Tsai WM, Rausch MD (1991) Iso-specific polymerization of propylene catalyzed by rac-ethylenebis(indenyl)methylzirconium cation. *J Am Chem Soc* 113: 8570-8571
  26. Pellecchia C, Proto A, Longo P, Zambelli A (1991) Group 4 transition metal complex cations for olefin polymerization. *Makromol Chem Rapid Commun* 12: 663-667
  27. Massey AG, Park AJ (1964) Perfluorophenyl derivatives of the elements. I. Tris(pentafluorophenyl)boron. *J Organomet Chem* 2: 245-250
  28. Yang X, Stern CL, Marks TJ (1992) Cationic metallocene polymerization catalyst: the first base free zirconocene hydride. *Angew Chem* 104: 1406-1408
  29. Grassi A, Maffei G, Milione S, Jordan RF (2001) Synthesis of ethylene-co-norbornene polymers promoted by MAO free catalysts based on group 4 dicarbollide complexes. *Macromol Chem Phys* 202: 1239-1245
  30. Lee H, Hong SD, Park YW, Jeong BG, Nam DW, Jung HY, Jung MW, Song KH (2004) Control of symmetry in active cationic *ansa*-zirconocene species: catalyst preparation, characterization and ethylene-norbornene copolymerization. *J Organomet Chem* 689: 3402-3411
  31. Jang Y, Sung HK, Kwag H (2006) Effects of tris(pentafluorophenyl)borane on the activation of the Ni(II)-based catalyst in the addition polymerization of norbornene. *Eur Polym J* 42: 1250-1258
  32. Lee L, Shih R, Ou H, Lee T (2003) Solubility of ethylene in mixtures of toluene, norbornene, and

- cyclic olefin copolymer at various temperatures and pressures. *Ind Eng Chem Res* 42: 6977-6985
33. Lee L, Ou H, Hsu H (2005) The experiments and correlations of the solubility of ethylene in toluene solvent. *Fluid Phase Equilib* 231: 221-230
  34. Lee LS, Shih RF, Ou HJ, Lee TS (2005) Solubility of ethylene in toluene and norbornene mixture at various temperatures and pressures. *J Chin Inst Eng* 28: 1127-1138
  35. Yano A, Hasegawa S, Yamada S, Akimoto A (1999) Influence of activators on ethylene polymerization with diphenylmethylidene-(cyclopentadienyl)(fluorenyl)zirconium dichloride catalysts at high temperature. *J Mol Catal A* 148: 77-86
  36. Park SY, Choi KY, Song KH, Jeong BG (2003) Kinetic modeling of ethylene-norbornene copolymerization using homogeneous metallocene catalysts. *Macromolecules* 36: 4216-4225
  37. Tritto I, Boggioni L, Zampa C, Sacchi MC, Ferro DR (2006) Ethylene-norbornene copolymers by *ansa* fluorenyl metallocenes: Mechanistic considerations on the basis of tetrad and pentad analysis. *Top Catal* 40: 151-161
  38. Arndt-Rosenau M, Beulich I (1999) Microstructure of ethene/norbornene copolymers. *Macromolecules*, 32: 7335-7645
  39. Tritto I, Marestin C, Boggioni L, Zetta L, Provasoli A, Ferro D. (2000) ethylene-norbornene copolymer microstructure. Assessment and advances based on assignments of  $^{13}\text{C}$  NMR spectra. *Macromolecules* 33: 8931-8944
  40. Forsyth J, Perena JM, Benavente R, Perez E, Tritto I, Boggioni L, Brintzinger HH (2001) Influence of the polymer microstructure on the thermal properties of cycloolefin copolymers with high norbornene contents. *Macromol Chem Phys* 202: 614-620