



Readily available biomarkers predict poor survival in metastatic pancreatic cancer

Marin Strijker, Eran van Veldhuisen, Lydia G. van der Geest, Olivier R. Busch, Maarten F. Bijlsma, Nadia Haj Mohammad, Marjolein Y. Homs, Jeanin E. van Hooft, Joanne Verheij, Judith de Vos-Geelen, Johanna W. Wilmink, W. Ewout W. Steyerberg, Marc G. Besselink, Hanneke W. van Laarhoven & for the Dutch Pancreatic Cancer Group

To cite this article: Marin Strijker, Eran van Veldhuisen, Lydia G. van der Geest, Olivier R. Busch, Maarten F. Bijlsma, Nadia Haj Mohammad, Marjolein Y. Homs, Jeanin E. van Hooft, Joanne Verheij, Judith de Vos-Geelen, Johanna W. Wilmink, W. Ewout W. Steyerberg, Marc G. Besselink, Hanneke W. van Laarhoven & for the Dutch Pancreatic Cancer Group (2021) Readily available biomarkers predict poor survival in metastatic pancreatic cancer, *Biomarkers*, 26:4, 325-334, DOI: [10.1080/1354750X.2021.1893814](https://doi.org/10.1080/1354750X.2021.1893814)

To link to this article: <https://doi.org/10.1080/1354750X.2021.1893814>



© 2021 The Author(s). Published by Informa UK Limited, trading as Taylor & Francis Group



[View supplementary material](#)



Published online: 21 Mar 2021.



[Submit your article to this journal](#)



Article views: 1257



[View related articles](#)








[View Crossmark data](#)



[Citing articles: 1 View citing articles](#)

Readily available biomarkers predict poor survival in metastatic pancreatic cancer

Marin Strijker^{a#}, Eran van Veldhuisen^{a#} , Lydia G. van der Geest^{b#} , Olivier R. Busch^a, Maarten F. Bijlsma^{c#}, Nadia Haj Mohammad^d, Marjolein Y. Homs^e, Jeanin E. van Hooft^f, Joanne Verheij^g, Judith de Vos-Geelen^h , Johanna W. Wilmink^{i#}, W. Ewout W. Steyerberg^{j#}, Marc G. Besselink^{a*#} , and Hanneke W. van Laarhoven^{i*#} ; for the Dutch Pancreatic Cancer Group

^aDepartment of Surgery, Cancer Center Amsterdam, Amsterdam UMC, University of Amsterdam, Amsterdam, The Netherlands; ^bDepartment of Research and Development, Netherlands Comprehensive Cancer Organization (IKNL), Utrecht, The Netherlands; ^cLaboratory for Experimental Oncology and Radiobiology, Center for Experimental and Molecular Medicine, Cancer Center Amsterdam, Amsterdam UMC, University of Amsterdam, Amsterdam, The Netherlands; ^dDepartment of Medical Oncology, University Medical Center, Utrecht University, Utrecht, The Netherlands; ^eDepartment of Medical Oncology, Erasmus Medical Center, Rotterdam, The Netherlands; ^fDepartment of Gastroenterology and Hepatology, Leiden University Medical Center, Leiden, The Netherlands; ^gDepartment of Pathology, Cancer Center Amsterdam, Amsterdam UMC, University of Amsterdam, Amsterdam, The Netherlands; ^hDepartment of Internal Medicine, Division of Medical Oncology, GROW – School for Oncology and Developmental Biology, Maastricht University Medical Center, Maastricht, The Netherlands; ⁱDepartment of Medical Oncology, Cancer Center Amsterdam, Amsterdam UMC, University of Amsterdam, Amsterdam, The Netherlands; ^jDepartment of Biomedical Data Sciences, Leiden University Medical Center, Leiden, The Netherlands

ABSTRACT

Background: Identification of metastatic pancreatic cancer (mPC) patients with the worst prognosis could help to tailor therapy. We evaluated readily available biomarkers for the prediction of 90-day mortality in a nationwide cohort of mPC patients.

Methods: Patients with synchronous mPC were included from the Netherlands Cancer Registry (2015–2017). Baseline CA19-9, albumin, CRP, LDH, CRP/albumin ratio, and (modified) Glasgow Prognostic Score ((m)GPS composed of albumin and CRP) were evaluated. Multivariable logistic regression analyses were performed to identify predictors of 90-day mortality. Prognostic value per predictor was quantified by Nagelkerke's partial R².

Results: Overall, 4248 patients were included. Median overall survival was 2.2 months and 90-day mortality was 59.4% (n = 1629). All biomarkers predicted 90-day mortality in univariable analysis, and remained statistically significant after adjustment for clinically relevant factors and all other biomarkers (all $p < 0.001$). The prognostic value of the biomarkers combined was similar to WHO performance status. Patients who received chemotherapy had better outcomes than those who did not, regardless of biomarker levels.

Conclusions: In mPC patients, albumin, CA19-9, CRP, LDH, CRP/albumin ratio, and (m)GPS are prognostic for poor survival. Biomarkers did not predict response to chemotherapy. These readily available biomarkers can be used to better inform patients and to stratify in clinical trials.

ARTICLE HISTORY

Received 26 October 2020
Accepted 13 February 2021




KEYWORDS









Pancreatic cancer; prognosis; readily available biomarkers; GPS; population-based

Background


Patients with metastatic pancreatic cancer (mPC) face a disappointing outcome, with reported median overall survival (OS) rates of merely 2–3 months in population-based research (Vincent *et al.* 2011, van der Geest *et al.* 2017). FOLFIRINOX and Gemcitabine/nab-paclitaxel chemotherapy have shown to be the most effective treatment regimens in mPC (Conroy *et al.* 2011, Von Hoff *et al.* 2013, Ducreux *et al.*

2015). However, given the relatively high toxicity rates of chemotherapy and possible deterioration in quality of life (Conroy *et al.* 2011), it is crucial to select those patients who are most likely to benefit from systemic treatment. A significant proportion of patients with mPC has an extremely poor prognosis (e.g. survival <3 months) and might not benefit from further treatment (van der Geest *et al.* 2017). Identification of patients with such a poor prognosis could

CONTACT Marin Strijker  m.strijker@amsterdamumc.nl; Hanneke W. van Laarhoven  h.vanlaarhoven@amsterdamumc.nl  Department of Medical Oncology, Cancer Center Amsterdam, Amsterdam UMC, University of Amsterdam, Meibergdreef 9, Amsterdam, 1105 AZ, The Netherlands

[#]Marin Strijker, Eran van Veldhuisen, Lydia G. van der Geest, Maarten F. Bijlsma, Johanna W. Wilmink, Ewout W. Steyerberg, Marc G. Besselink, Hanneke W. van Laarhoven are responsible for statistical design and analysis. Email:  m.strijker@amc.uva.nl (M. Strijker),  e.vanveldhuisen@amsterdamumc.nl (E. van Veldhuisen),  l.vandergeest@iknl.nl (L. G. van der Geest),  m.f.bijlsma@amsterdamumc.nl (M. F. Bijlsma),  j.w.wilmink@amsterdamumc.nl (J. W. Wilmink),  e.w.steyerberg@umc.nl (E. W. Steyerberg),  m.g.besselink@amsterdamumc.nl (M. G. Besselink),  h.vanlaarhoven@amsterdamumc.nl (H. W. van Laarhoven).

*Shared senior authorship.

 Supplemental data for this article can be accessed [here](#).

© 2021 The Author(s). Published by Informa UK Limited, trading as Taylor & Francis Group
This is an Open Access article distributed under the terms of the Creative Commons Attribution-NonCommercial-NoDerivatives License (<http://creativecommons.org/licenses/by-nc-nd/4.0/>), which permits non-commercial re-use, distribution, and reproduction in any medium, provided the original work is properly cited, and is not altered, transformed, or built upon in any way.

help to tailor treatment and supportive care options (e.g. to refrain from palliative chemotherapy, and/or consider endoscopic or surgical interventions).

Biomarkers could aid in the prediction of outcome and treatment success. Currently, many research efforts focus on the development of novel biomarkers. Unfortunately, many of such attempts fail (Ioannidis 2010, de Graaf *et al.* 2018). Thus far, Carbohydrate Antigen 19-9 (CA19-9) remains the only FDA-approved biomarker for pancreatic cancer (Ballehaninna and Chamberlain 2012). However, there is some evidence suggesting that other readily available biomarkers, such as C-reactive protein (CRP), albumin and lactate dehydrogenase (LDH), or combinations of those, may predict outcome in pancreatic cancer (McMillan 2013, Yu *et al.* 2017, Hang *et al.* 2018). These markers are nowadays not routinely used in clinical practice as current evidence is of limited quality and no potentially clinically relevant outcomes have been studied.

The aim of this study was to determine the prognostic value of readily available biomarkers for poor prognosis (defined as 90-day mortality) in a nationwide cohort of mPC patients. We also explored predictive value for benefit of palliative chemotherapy.

Clinical significance and impact

- Many resources are spent in the search for novel prognostic biomarkers in metastatic pancreatic cancer.
- However, readily available and non-expensive biomarkers could provide similar information.
- We used a large ($n=4248$) nationwide database (with many clinical variables available to adjust for) to evaluate readily available biomarkers (CA19-9, CRP, albumin, LDH, and combinations).
- This is the largest study to show that all biomarkers predicted 90-day mortality after adjustment.
- The prognostic value of the four biomarkers together is similar to that of WHO performance status, one of the most important clinical factors.
- We recommend to include these biomarkers in future prognostic studies and clinical trials.

Materials and methods

Patient selection

This is a retrospective study for which data were derived from the Netherlands Cancer Registry (NCR). The NCR is a population-based registry, in which all newly diagnosed malignancies in the Netherlands (approximately 17 million inhabitants) using data extracted from patient's medical records. Patients are identified using the automated pathological archive (PALGA) and the National Registry of Hospital Discharge Diagnosis. NCR data are registered by trained data administrators. These data administrators use the same standardized instructions, including those for biomarkers. Periodically, the NCR performs a quality check, after which data collection is optimized. Besides, as many research

projects use NCR data, data quality is monitored continuously. Before using the biomarker data logic checks were performed in order to search for outliers/illogical data entries; no signals of systematic errors were found. This study was reported according to the TRIPOD and REMARK guidelines where applicable (McShane *et al.* 2005, Collins *et al.* 2015, Sauerbrei *et al.* 2018).

All patients with synchronous mPC registered in the NCR between 2015 and 2017 were selected: ICD-O-3 topography C25 and morphology codes 8 010;8 012;8 020;8 140;8 141;8 260; 8 310;8 440;8 480;8 481;8 490;8 500;8 560, or a non-microscopic verified invasive neoplasm of the pancreas suspect for adenocarcinoma (excluding C25.4). A subgroup analysis was performed including only patients undergoing palliative chemotherapy.

Definitions

We considered CA19-9, albumin, CRP, and LDH. We studied each biomarker separately, the CRP/albumin ratio, and the (modified) Glasgow Prognostic Score (GPS and mGPS). In the GPS, 1 point each for CRP >10 mg/L or albumin <35 g/L is allocated (Forrest *et al.* 2004, McMillan 2013). For the mGPS, 1 point is assigned for CRP >10 mg/L, and 2 points for both CRP >10 mg/L and albumin <35 g/L (Supplementary Table A1) (McMillan 2013). Collected values were the highest value (for CA19-9, LDH and total bilirubin) or last value (for albumin and CRP) before start of treatment/decision to renounce treatment (for rationale see Supplementary Table A1). All biomarker tests were performed by the clinical laboratories of the individual hospitals as part of their standard clinical processes. Information on clinical outcome (survival) was therefore not available to the performers of the tests. Other extracted data were: age, sex, socioeconomic status, WHO performance score, comorbidity, tumour location, tumour diameter, clinical tumour (cT) stage, clinical lymph node (cN) stage, location/number of metastatic sites, pathology confirmation, treatment and OS. Socioeconomic status was assessed using social deprivation scores based on income, education and occupation per four-digit postal code area. Registered cT stage in 2 017 were based on the UICC TNM8 edition. For patients diagnosed in 2015–2016 cT was restaged according to the 8th edition using tumour size (Sobin *et al.* 2009). cN status was defined as lymph node negative (cN–), lymph node positive (cN+) or unknown (cNX). Number and sites of metastases were combined in one variable, based on the prognostic value of the number/location of sites as identified in previous work (one site lung/lymph nodes; one site other; two sites; three sites) (Mackay *et al.* 2019). Palliative chemotherapy was defined as administration of at least one dose of any cytotoxic regimen. Patients were treated according to standard clinical practice, usually with FOLFIRINOX or gemcitabine-based therapy. Primary outcome was 90-day mortality (any cause). Secondary outcome was OS. Vital status was checked with the civil municipal registry at 1 February 2019.

Table 1. Characteristics and outcomes of 4248 patients diagnosed with metastatic pancreatic cancer (2015–2017) in the Netherlands.

Biomarkers	Complete cases	After multiple imputation
CA19-9, kU/L (n = 2490) ^a	1610 (152–9000)	1728 (160–9000)
LDH, U/L (n = 3719)	233 (186–316)	232 (186–316)
Albumin, g/L (n = 3244)	36 (31–41)	36 (31–41)
CRP, mg/L (n = 3482)	29 (9–81)	28 (9–78)
GPS (n = 2818)		
0	625 (22.2)	965 (22.7)
1	1102 (39.1)	1748 (41.1)
2	1091 (38.7)	1536 (36.2)
mGPS (n = 2818)		
0	736 (26.1)	1157 (27.2)
1	991 (35.2)	1556 (36.6)
2	1091 (38.7)	1536 (36.2)
CRP/albumin ratio (n = 2818)	0.83 (0.25–2.58)	0.78 (0.24–2.43)
Bilirubin, $\mu\text{mol/L}$ (n = 3867)	15 (8–93)	14 (8–89)
Cholestasis, yes (bilirubin >20 $\mu\text{mol/L}$) (n = 3867)	1563 (40.4)	1693 (39.9)
Clinical characteristics		
Age	70 (63–77)	70 (63–77)
Male sex	2239 (52.7)	2239 (52.7)
Socioeconomic Status		
Low	1358 (32.0)	1358 (32.0)
Medium	1723 (40.6)	1723 (40.6)
High	1167 (27.5)	1167 (27.5)
Performance score (n = 2260)		
WHO 0	727 (32.2)	1221 (28.7)
WHO 1	856 (37.9)	1543 (36.3)
WHO 2	397 (17.6)	817 (19.2)
WHO 3–4	280 (12.4)	667 (15.7)
Cardiovascular comorbidity, yes (n = 3885)	1320 (34.0)	1440 (33.9)
Pulmonary comorbidity, yes (n = 3885)	488 (12.6)	535 (12.6)
Diabetes Mellitus as comorbidity, yes (n = 3885)	1114 (28.7)	1217 (28.6)
Other malignancy in history, yes (n = 3885)	821 (19.3)	821 (19.3)
Tumour location		
Head/body	2479 (58.4)	2479 (58.4)
Tail	1027 (24.2)	1027 (24.2)
Other/not otherwise specified/overlapping	742 (17.5)	742 (17.5)
Tumour diameter in mm (n = 3314)	40 (30–53)	40 (30–54)
Clinical T stage (TNM 8)		
Tis/T0/T1/T2	1305 (30.7)	1305 (30.7)
T3/T4	1891 (44.5)	1891 (44.5)
TX	1052 (24.8)	1052 (24.8)
Clinical N stage		
N–	1742 (41.0)	1742 (41.0)
N+	1626 (38.3)	1626 (38.3)
NX	880 (20.7)	880 (20.7)
Location metastases (n = 4244)		
1 site (lung/distant nodes)	313 (7.4)	313 (7.4)
1 site (liver/peritoneal/other)	2324 (54.8)	2324 (54.8)
2 sites (any)	1071 (25.2)	1071 (25.2)
3 or more sites (any)	536 (12.6)	536 (12.6)
Treatment characteristics		
Pathology confirmation of diagnosis (yes)	3054 (71.9)	–
Laparoscopy and/or explorative laparotomy	344 (8.1)	–
Biliary drainage	966 (23.4)	–
Palliative chemotherapy (any)	1218 (28.7)	–
No palliative chemotherapy	3030 (71.3)	–
FOLFIRINOX first line	749 (17.6)	–
Gemcitabine monotherapy first line	257 (6.0)	–
Gemcitabine/nab-paclitaxel first line	148 (3.5)	–
Other chemotherapy first line	64 (1.5)	–
Outcomes		
30-day mortality after diagnosis	1048 (24.7)	–
90-day mortality after diagnosis	2462 (58.0)	–
90-day mortality after diagnosis for patients undergoing palliative chemotherapy	238 (19.5)	–
OS total group in months (median, 95%CI)	2.3 (2.2 to 2.4)	–
OS patients receiving FOLFIRINOX (n = 749)	8.3 (7.6 to 8.9)	–
OS patients receiving gemcitabine/nab-paclitaxel (n = 148)	6.5 (5.1 to 8.0)	–
OS patients receiving gemcitabine-monotherapy (n = 257)	4.2 (3.6 to 5.0)	–
OS patients not receiving palliative chemotherapy (n = 3030)	1.5 (1.4 to 1.6)	–

Categorical variables are presented as counts (%); continuous variables are presented as medians (IQR); OS = Overall Survival in months; If the number of available cases is not specified in the left column, no missing data occurred; ^aValues >9000 kU/L were coded as 9000 in the Netherlands Cancer Registry.

Statistical analysis

Missing data occurred frequently (Table 1) and were deemed missing at random (possibly related to other parameters, but unrelated to outcome) (Schafer and Graham 2002). Missing data were estimated using 10-fold multiple imputation and Predictive Mean Matching (Mackinnon 2010). As sensitivity analyses complete case analyses were performed. Complete case analyses included complete data for the variables under study, except for the analyses comparing Nagelkerke's partial R^2 which were performed in the database with fully complete cases only to allow for adequate comparison.

The Box-Tidwell test was used to assess linearity between the continuous predictors and the Logit, which was violated in CRP. Hence, CRP was log-transformed (LN[CRP]). Median OS with 95% confidence interval (CI) was estimated using Kaplan–Meier analysis. First, the best clinical model using multivariable logistic regression analysis was constructed (backward selection; $p > 0.10$ for removal), including known relevant predictors and factors with some prognostic value ($p < 0.10$) in univariable analysis. Subsequently, biomarkers were added to assess their independent prognostic value. Multivariable analyses including (m)GPS or CRP/albumin ratio were not adjusted for individual albumin and CRP levels, as these variables are probably highly correlated to each other.

To illustrate the prognostic effect size for the continuous predictors and biomarkers, the odds ratio (OR) was calculated for comparison of the 75th versus the 25th percentile. This was achieved by scaling of the biomarker values (division of values by their interquartile range). The added prognostic value of each predictor and biomarker was explored by calculating Nagelkerke's R^2 for univariable analysis and after adjustment. The partial Nagelkerke's R^2 for each variable is the percentage of variability in the outcome which is explained by the specific prognostic factor(s) in the model (explained variance).

Predictive values (Ballman 2015) for the effect of palliative chemotherapy were explored. Biomarkers were categorized based on administration of palliative chemotherapy (yes/no) and biomarker levels (high vs. low using the median as cut-off value; or predefined scores for GPS and mGPS). To account for immortal-time bias in these analyses, 30-day mortality was excluded. Data were analysed using IBM SPSS Statistics for Windows version 24.0 (IBM corp., Armonk, NY). A p value < 0.05 was considered statistically significant.

Results

Cohort description

After exclusion of seven patients who were lost-to-follow-up within 90 days, 4 248 patients with mPC were analysed. Median age was 70 (interquartile range (IQR) 63–77) years and 53% was male ($n = 2 239$; Table 1). The diagnosis of pancreatic cancer was pathologically confirmed in 3 054 patients (72%), and metastases were pathologically confirmed in 2 293 (54%). Palliative chemotherapy was administered to 1 218 patients (29%). Ninety-day mortality was 58% ($n = 2 462$) in the total cohort, and 20% ($n = 238$) in 1 218 patients receiving palliative chemotherapy. Median OS of the total cohort was 2.3 months (95%CI 2.2 to 2.4). Median biomarker levels are shown in Table 1. Of patients with a (m)GPS score of 2, 1 175/1 536 (77%) died within 90 days compared to 33% (317/965) and 34% (394/1 157) with a GPS or mGPS score of 0, respectively (Table 2).

Prognostic value of readily available biomarkers

In the total cohort, in univariable analysis, all biomarkers predicted 90-day mortality (all $p < 0.001$; Table 3). After adjustment for age, WHO performance score, cardiovascular disease, primary tumour location, cN status and location/number of metastatic sites (best clinical model, Supplementary Table A2) all individual biomarkers were still prognostic ($p < 0.001$). After addition of also all other biomarkers (highly correlated biomarkers/scores were not added to the same model, see methods), all biomarkers predicted 90-day mortality. All biomarkers (individual and after adjustments) also predicted the secondary outcome OS (all $p < 0.001$; see Supplementary Table A3).

In the group of patients who received palliative chemotherapy ($n = 1 218$) all biomarkers predicted 90-day mortality after adjustment for WHO performance score, primary tumour location, cT stage, and location/number of metastatic sites (Table 3, for best clinical model see Supplementary Table A4). After including also all biomarkers, all biomarkers except for albumin, were strong prognostic factors.

The size of the prognostic value of each predictor in the total cohort is illustrated in Figure 1. For example, patients with CA19-9 levels $> 9 000$ ku/L rather than 160 ku/L had a two times higher odds of 90-day mortality (OR 1.95, 95%CI 1.59 to 2.39). Of all clinical factors, the Nagelkerke's partial R^2 was highest for WHO performance status (12% after adjustment for clinical factors, 7% after adjustment for also all

Table 2. Ninety-day mortality for each (modified) Glasgow Prognostic Score category in metastatic pancreatic cancer.

	Score	Total group (n = 4248)		Without cholestasis (n = 2555)		Palliative chemotherapy (n = 1218)	
		90-day mortality, yes/total (%)	p Value	90-day mortality, yes/total (%)	p Value	90-day mortality, yes/total (%)	p Value
GPS	0	317/965 (32.8%)	< 0.001	221/680 (32.5%)	< 0.001	44/417 (10.6%)	< 0.001
	1	971/1748 (55.5%)		621/1103 (56.3%)		109/546 (20.0%)	
	2	1175/1536 (76.5%)		600/772 (77.7%)		85/255 (33.3%)	
mGPS	0	394/1157 (34.1%)	< 0.001	265/771 (34.4%)	< 0.001	48/481 (10.0%)	< 0.001
	1	894/1556 (57.5%)		577/1012 (55.0%)		106/482 (22.0%)	
	2	1175/1536 (76.5%)		600/772 (77.7%)		85/255 (33.3%)	

Table 3. Prognostic factors for 90-day mortality after diagnosis in patients with metastatic pancreatic cancer.

Biomarker	Univariable		Multivariable, adjusted for clinical factors only*		Multivariable, adjusted for clinical factors* and other biomarkers	
	OR (95%CI)	p Value	OR (95%CI)	p Value	OR (95%CI)	p Value
Total group (n = 4248)						
CA19-9 (per 1000 U/L increase)	1.09 (1.07 to 1.11)	<0.001	1.08 (1.05 to 1.10)	<0.001	1.08 (1.05 to 1.10)	<0.001
LDH (per 100 U/L increase)	1.30 (1.22 to 1.38)	<0.001	1.28 (1.20 to 1.36)	<0.001	1.18 (1.11 to 1.25)	<0.001
Albumin (per unit increase)	0.92 (0.91 to 0.93)	<0.001	0.94 (0.93 to 0.95)	<0.001	0.97 (0.95 to 0.98)	<0.001
LN[CRP]	1.68 (1.58 to 1.78)	<0.001	1.52 (1.42 to 1.62)	<0.001	1.36 (1.26 to 1.47)	<0.001
GPS		<0.001		<0.001		<0.001 [#]
0						
1	2.56 (2.09 to 3.13)		2.16 (1.76 to 2.65)		1.95 (1.59 to 2.40)	
2	6.67 (5.46 to 8.15)		4.28 (3.40 to 5.39)		3.71 (2.93 to 4.68)	
mGPS		<0.001		<0.001		<0.001 [#]
0						
1	2.62 (2.17 to 3.16)		2.27 (1.86 to 2.77)		2.04 (1.67 to 2.49)	
2	6.31 (5.26 to 7.58)		4.17 (3.37 to 5.15)		3.63 (2.92 to 4.52)	
CRP/albumin ratio (per unit increase)	1.33 (1.28 to 1.38)	<0.001	1.20 (1.15 to 1.25)	<0.001	1.20 (1.15 to 1.25)	<0.001 [#]
Chemotherapy group (n = 1218)						
CA19-9 (per 1000 U/L increase)	1.10 (1.06 to 1.15)	<0.001	1.08 (1.03 to 1.13)	0.001	1.08 (1.03 to 1.13)	0.001
LDH (per 100 U/L increase)	1.18 (1.08 to 1.29)	<0.001	1.17 (1.06 to 1.28)	0.001	1.10 (1.01 to 1.20)	0.03
Albumin (per unit increase)	0.94 (0.92 to 0.97)	<0.001	0.95 (0.93 to 0.98)	<0.001	0.97 (0.94 to 1.00)	0.07
LN[CRP]	1.52 (1.35 to 1.72)	<0.001	1.39 (1.22 to 1.59)	<0.001	1.29 (1.10 to 1.49)	0.001
GPS		<0.001		<0.001		<0.001 [#]
0						
1	2.14 (1.38 to 3.33)		1.76 (1.11 to 2.78)		1.60 (1.01 to 2.55)	
2	4.27 (2.67 to 6.79)		3.28 (2.00 to 5.36)		2.99 (1.81 to 4.95)	
mGPS		<0.001		<0.001		<0.001 [#]
0						
1	2.56 (1.70 to 3.85)		2.08 (1.34 to 3.22)		1.89 (1.21 to 2.96)	
2	4.54 (2.94 to 7.02)		3.52 (2.20 to 5.61)		3.24 (2.01 to 5.23)	
CRP/albumin ratio (per unit increase)	1.20 (1.12 to 1.28)	<0.001	1.15 (1.07 to 1.23)	<0.001	1.13 (1.06 to 1.22)	0.001 [#]

LN[CRP] = logarithmic transformation of CRP.

*Total group: Adjusted for age, WHO performance status, cardiovascular disease, primary tumour location, cN status, location/number of metastatic sites (best clinical model, see [Supplementary Table A1](#)). In complete case analysis, the best clinical model was the exact same model as after multiple imputation;

Chemotherapy group: Adjusted for WHO performance score, primary tumour location, cT stage (TNM8), location/number of metastatic sites (best clinical model, see [Supplementary Table A2](#)). In complete case analysis, the best clinical model was the exact same model as after multiple imputation.

[#]Not adjusted for albumin and CRP as mGPS, GPS and CPR/albumin ratio are composed of these.

biomarkers; [Figure 2](#)). LDH, albumin and LN[CRP] had a partial R^2 similar to or higher than that of age and number/location of metastatic sites. In the full model, the four biomarkers together had a partial Nagelkerke's R^2 higher than that of WHO performance status (10% vs 7%, respectively). In other words, the prognostic value of CA19-9, LDH, LN[CRP] and albumin combined was higher than that of WHO. When comparing GPS, mGPS, CRP/albumin ratio, and LN[CRP] plus albumin as continuous parameters, (m)GPS and the two continuous parameters had the highest explained variance.

Predictive value of readily available biomarkers

None of the biomarkers was predictive of treatment outcome; patients who underwent chemotherapy had lower rates of 90-day mortality and a more favourable OS compared to those who did not, regardless of biomarker levels. This was illustrated for GPS and CA19-9 in [Figure 3](#); for the

subgroup of patients with low CA19-9 both 90-day mortality and OS was better when receiving palliative chemotherapy compared to not receiving chemotherapy ($p < 0.001$ for both analyses). This was also found for the subgroup of patients with high CA19-9, GPS score 0, GSP 1 and GPS 2 (all $p < 0.001$ for both 90-day mortality and OS). Very similar results we found for the other biomarkers. Also, when including only patients with WHO performance status 0–1 and age < 80 (as surrogate definition for the eligibility to receive chemotherapy), there was no predictive value of any biomarker under study.

Sensitivity analysis

Upon sensitivity analysis, comparing the outcomes before and after multiple imputation, similar results were found. The main differences were that in complete-case analysis albumin was not a statically significant prognostic factor after adjustment for all clinical factors/biomarkers in the total cohort,

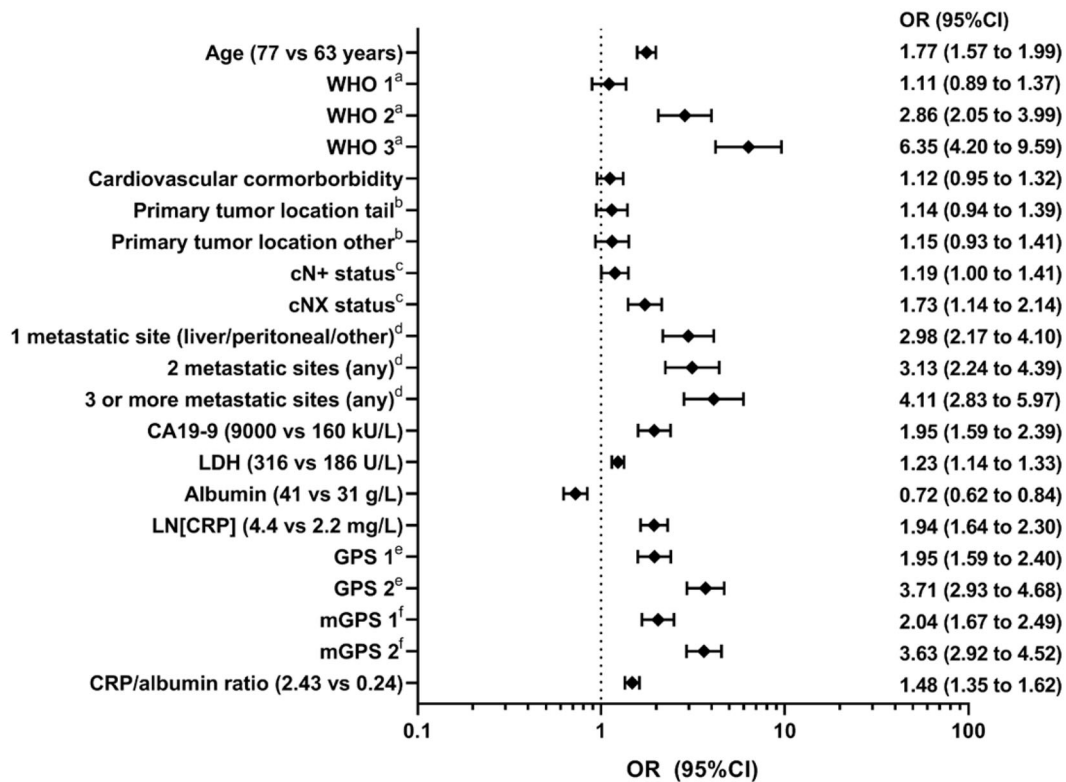


Figure 1. Prognostic factors for 90-day mortality after diagnosis in patients with metastatic pancreatic cancer. The odds ratios for the continuous variables (age and all biomarkers) are presented as an increase from the lower quartile (25th percentile) to the upper quartile (75th percentile). Other reference categories are the following: ^aWHO 0; ^bprimary tumour location head/body/overlapping/not otherwise specified; ^ccN – status; ^d1 metastatic site (lung/lymph nodes) ^eGPS 0; ^fmGPS 0.

while it was after multiple imputation (Table 3 versus Supplementary Table A5). In the chemotherapy group, LDH, albumin and CRP/albumin ratio were not statically significant prognostic in part of the models. Although the (size of the) prognostic value was lower for LN[CRP], albumin, and (m)GPS in complete case analysis than with multiple imputation, the prognostic value of the four biomarkers together was still similar to that of WHO performance status (6.5% vs 7.6%, respectively; Figures 1 and 2 versus A1 and A2). Imputation of all predictors except for the biomarker under study (hence creating separate datasets for each biomarker) showed results very similar to imputation of all variables in one database (Table 3 versus Supplementary Table A6).

Discussion

This population-based study showed that CA19-9, albumin, CRP, LDH, (m)GPS, and CRP/albumin ratio predict 90-day mortality independent of other clinical parameters including WHO performance status in 4 248 patients with mPC. The prognostic value of the four individual biomarkers combined was at least similar to that of WHO performance status. There was no predictive value in interaction with chemotherapy; regardless of biomarker levels, patients undergoing palliative chemotherapy had better outcomes than those who received best supportive care.

To the best of our knowledge, this is the largest study reporting on CA19-9, GPS or any of the other biomarkers

under study in mPC. As no previous studies assessed the prognostic value of these biomarkers for 90-day mortality, outcomes are difficult to compare. However, the strong prognostic value of CA19-9 for OS is well-known (Haas *et al.* 2013, Goldstein *et al.* 2015). GPS is composed of the positive acute phase protein CRP, and albumin which is a negative acute phase protein but also reflects nutritional status. Since the first report on its prognostic value in non-small cell lung cancer, the GPS has shown strong prognostic value in various types of cancer (Forrest *et al.* 2004, McMillan 2013). However, in mPC, only a limited number of relatively small series [$n = 81-174$ (Inoue *et al.* 2015, Liu *et al.* 2017, Piciocchi *et al.* 2017); $n = 439$ (Imaoka *et al.* 2016)] studied GPS, most of them show prognostic value similar to our findings. LDH is released in the bloodstream in the case of cell damage and has been associated with poor prognosis in several cancer types, including mPC [$n = 196-272$ (Tas *et al.* 2014, Yu *et al.* 2017)].

In our analyses, we did not find predictive value of the biomarkers for the effectiveness of chemotherapy. As revealed by a recent review, to date there are no other established predictive biomarkers to guide treatment decisions in pancreatic cancer (van der Sijde *et al.* 2019). A recent exploratory study ($n = 54$) has suggested that repeated KRAS circulating tumour DNA measurements could be useful in early response prediction in advanced pancreatic cancer (Kruger *et al.* 2018). However, future, larger studies are needed to evaluate possible implementation of circulating tumour DNA in clinical practice (Creemers *et al.* 2017, Strijker *et al.* 2019).

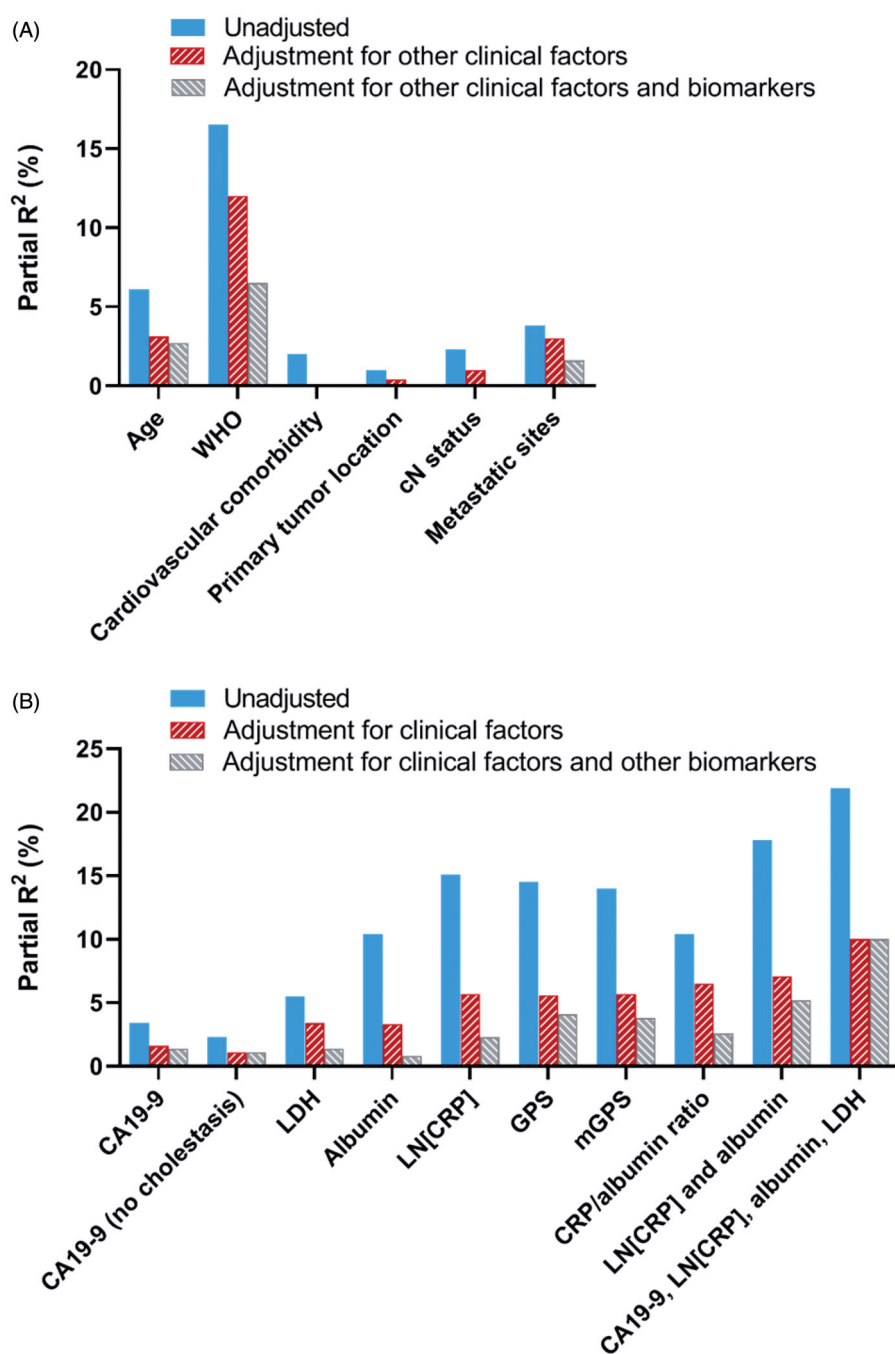


Figure 2. Prognostic value of predictors for 90-day mortality in metastatic pancreatic cancer, expressed as Nagelkerke's partial R^2 values. (A) Clinical predictors. (B) Biomarkers. The figure shows a) the prognostic value each individual biomarker (CA19-9, LDH, CRP, Albumin); unadjusted, adjusted for clinical factors, and after addition of also the biomarkers; b) the prognostic value of four combinations of CRP and albumin (GPS, mGPS, CRP/albumin ratio, and LN[CRP] and albumin as continuous variables), unadjusted, adjusted for clinical factors, and after addition of the remaining biomarkers (i.e. CA19-9 and LDH); c) all four biomarkers combined; unadjusted and adjusted for clinical factors (as there are no remaining biomarkers to add to the model, the bars with ascending stripes and descending stripes show the same results).

In our study we adjusted for an elaborate set of clinical prognostic factors ('the best clinical model'). This included 10 of the 12 mandatory prognostic variables as recommended by a recently published consensus statement (included: age, albumin, bilirubin, CA19-9, CRP, disease status, LDH, liver metastasis, number of metastatic sites and performance status; not available were neutrophil-to-lymphocyte ratio and pain at baseline), and three from the recommended set (sex, primary tumour location, pulmonary metastasis) (Ter Veer *et al.* 2018). Most earlier studies adjusted only for a limited

set of clinical factors, often not including for instance WHO performance status (Haas *et al.* 2013).

The results of the present study must be interpreted in the light of some limitations. First, the missing data. We performed extensive sensitivity analyses with imputation, and did not find any important differences in the results. The small differences we found (some markers were not statistically significant after adjustment in complete case analysis), are attributable to the inefficiency of complete case analysis, which ignores information on patients even if a single

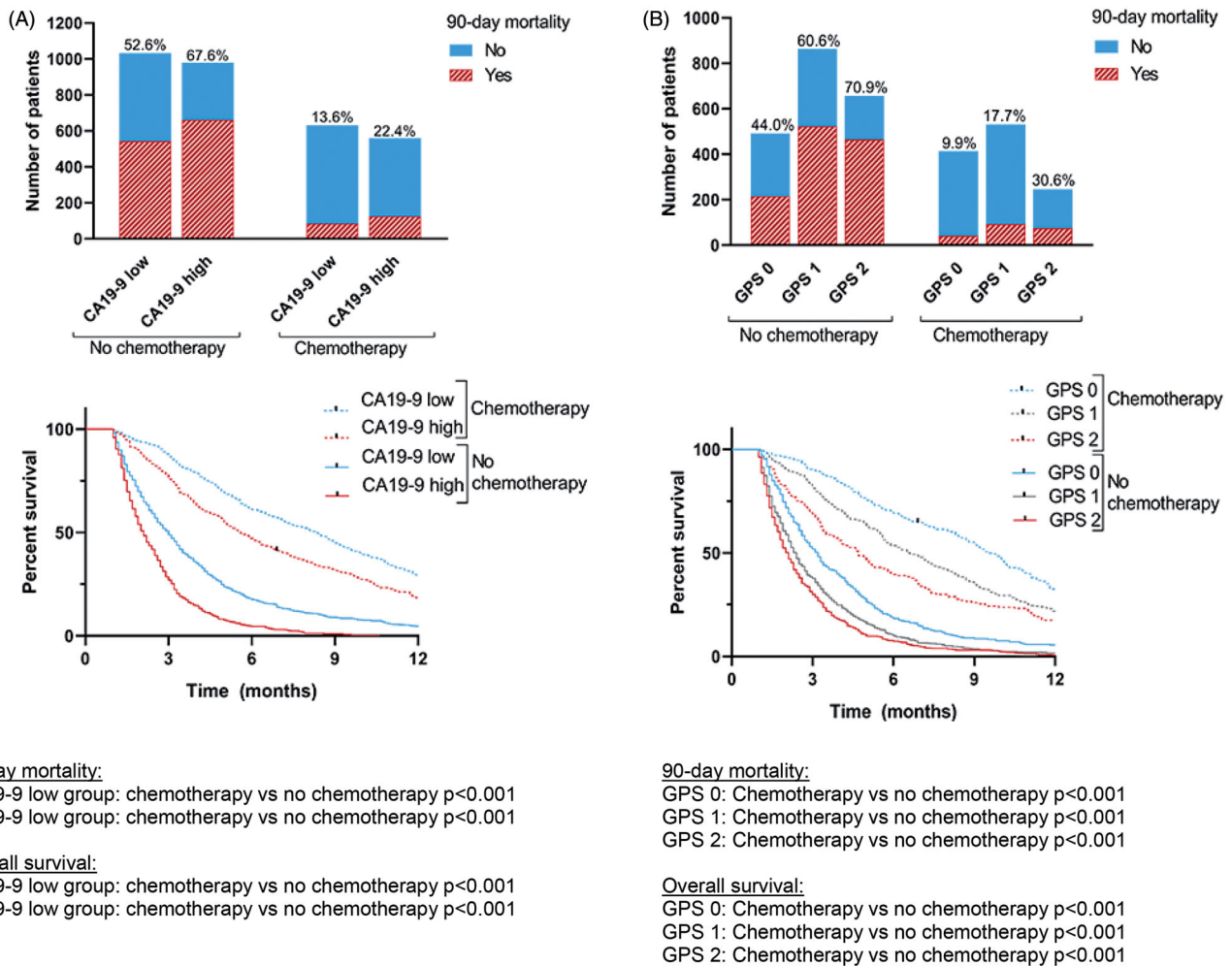


Figure 3. Predictive value of CA19-9 (A) and GPS (B) for 90-day mortality ($n = 3200^*$). CA19-9 was dichotomised using the median value (1728); *Thirty-day mortality after diagnosis was excluded.

predictor is missing from the set of required predictors for a statistical model. Indeed, Table 1 shows very similar predictor and biomarker values among complete and completed cases. It seems unlikely that the currently studied relation between the biomarkers and outcomes would differ in the patients with missing data. Second, the exact dates of biomarker measurements were unknown. However, by NCR definitions, all biomarkers were highest (CA19-9, LDH and bilirubin) or last values (albumin and CRP) before start of cancer treatment/decision to renounce treatment. If current results are translated into clinical practice or new studies, the same definitions should be applied. Third, CA19-9 higher than 9 000 kU/L was registered as 9 000 kU/L, which could have led to attenuated prognostic effects in this study. The most important strength of this study is the large number of patients diagnosed with mPC over a recent period of only three years and adequate follow-up. This, combined with a population-based design and availability of many other prognostic factors allowing for adequate adjustment, makes the results generalizable to many different settings.

We recommend to include CA19-9, albumin, CRP and LDH measurements in future studies on mPC. These markers are readily available and non-expensive, but have a combined prognostic value at least similar to that of WHO performance status. When considering CRP and albumin, and its related

scores, it seems that GPS, mGPS and the combination of LN[CRP] and albumin as continuous variables have the highest prognostic strength. We note that mGPS and GPS (which seem to perform equally) might be easier to interpret in clinical practice than the combination of (log-transformed) continuous variables. These biomarkers could be used to better inform patients about their prognosis and hence aid end-of-life decision-making, for instance to initiate palliative treatment. In addition, these biomarkers could be used to stratify in clinical trials in order to ensure well-balanced treatment-arms. In the future, the biomarkers could also be used to select patients eligible for specific treatment strategies, e.g. patients with a very poor prognosis of <90 days for best supportive care rather than palliative chemotherapy. A validated prediction model including for example WHO performance status, age, location/number of metastases, and biomarkers could be a next step. Moreover, the value of novel (often expensive) prognostic markers should be compared to these readily available biomarkers.

Acknowledgements

The authors thank the registration team of the Netherlands Comprehensive Cancer Organization (IKNL) for the collection of data for the Netherlands Cancer Registry.

Ethics approval

The Medical Ethics Committee of the Amsterdam UMC, University of Amsterdam waived the need for ethical approval. The study was performed in accordance with the Declaration of Helsinki.

Presentations

This study was presented during the 13th Congress of the European-African Hepato-Pancreato-Biliary Association (E-AHPBA), Amsterdam 2019.

Author contributions

Study design: MS, EvV, LvdG, MFB, JWW, MGB, HvL. Data acquisition and statistical analysis: MS, EvV, LvdG, MFB, JWW, EWS, MGB, HvL. Manuscript preparation: MS, EvV, LvdG, MGB, HvL. Revising the manuscript: LvdG, ORB, MFB, NHM, MYH, JvH, JV, JdVG, JWW, EWS. Supervision: JWW, EWS, MGB, HvL.

Disclosure statement

NHM has acted as a consultant for BMS, Eli Lilly, MSD, Servier, and Astra Zeneca. MFB has received research funding from Celgene and acted as a consultant for Servier. HWL has acted as a consultant for BMS, Celgene, Eli Lilly and Company, Nordic Pharma Group, Philips and Servier, has received research grants from, Amgen, Bayer Schering Pharma AG, BMS, Celgene, Eli Lilly and Company, GlaxoSmithKline Pharmaceuticals, Nordic Pharma Group, Philips, Roche Pharmaceuticals. JDV has received non-financial support from BTG, and Servier, and has served as a consultant for Shire and has received institutional research funding from Servier. The other authors report no conflict of interest.

Funding

This work was supported by the Dutch Cancer Society [grant number UVA2013-5842].

ORCID

Eran van Veldhuisen  <http://orcid.org/0000-0002-5664-2286>
 Lydia G. van der Geest  <http://orcid.org/0000-0003-1637-5520>
 Judith de Vos-Geelen  <http://orcid.org/0000-0003-2578-1766>
 Marc G. Besselink  <http://orcid.org/0000-0003-2650-9350>
 and Hanneke W. van Laarhoven  <http://orcid.org/0000-0003-3546-9709>

Data availability statement

This is a retrospective study for which data were derived from the Netherlands Cancer Registry (NCR). All relevant data are available within the manuscript.

References

- Ballehaninna, U.K., and Chamberlain, R.S., 2012. The clinical utility of serum CA 19-9 in the diagnosis, prognosis and management of pancreatic adenocarcinoma: an evidence based appraisal. *Journal of gastrointestinal oncology*, 3 (2), 105–119.
- Ballman, K.V., 2015. Biomarker: predictive or prognostic? *Journal of clinical oncology : official journal of the American Society of Clinical Oncology*, 33 (33), 3968–3971.
- Collins, G.S., et al., 2015. Transparent reporting of a multivariable prediction model for individual prognosis or diagnosis (TRIPOD): the TRIPOD statement. *BMJ (clinical research ed.)*, 350, g7594.
- Conroy, T., et al., 2011. FOLFIRINOX versus gemcitabine for metastatic pancreatic cancer. *New England journal of medicine*, 364 (19), 1817–1825.
- Creemers, A., et al., 2017. Clinical value of ctDNA in upper-GI cancers: a systematic review and meta-analysis. *Biochimica et biophysica acta. Reviews on cancer*, 1868 (2), 394–403.
- de Graaf, G., et al., 2018. The early economic evaluation of novel biomarkers to accelerate their translation into clinical applications. *Cost effectiveness and resource allocation : C/E*, 16, 23.
- Ducreux, M., et al., ESMO Guidelines Committee, 2015. Cancer of the pancreas: ESMO Clinical Practice Guidelines for diagnosis, treatment and follow-up. *Annals of oncology : official journal of the european society for medical oncology*, 26(Suppl 5), v56–68.
- Forrest, L.M., et al., 2004. Comparison of an inflammation-based prognostic score (GPS) with performance status (ECOG) in patients receiving platinum-based chemotherapy for inoperable non-small-cell lung cancer. *British journal of cancer*, 90 (9), 1704–1706.
- Goldstein, D., et al., 2015. nab-Paclitaxel plus gemcitabine for metastatic pancreatic cancer: long-term survival from a phase III trial. *Journal of the National Cancer Institute*, 107 (2), dju413.
- Haas, M., et al., 2013. Prognostic value of CA 19-9, CEA, CRP, LDH and bilirubin levels in locally advanced and metastatic pancreatic cancer: results from a multicenter, pooled analysis of patients receiving palliative chemotherapy. *Journal of cancer research and clinical oncology*, 139 (4), 681–689.
- Hang, J., et al., 2018. Prediction of overall survival for metastatic pancreatic cancer: Development and validation of a prognostic nomogram with data from open clinical trial and real-world study. *Cancer medicine*, 7 (7), 2974–2984.
- Imaoka, H., et al., 2016. Evaluation of modified Glasgow prognostic score for pancreatic cancer: a retrospective cohort study. *Pancreas*, 45 (2), 211–217.
- Inoue, D., et al., 2015. Prognostic value of neutrophil-lymphocyte ratio and level of C-reactive protein in a large cohort of pancreatic cancer patients: a retrospective study in a single institute in Japan. *Japanese journal of clinical oncology*, 45 (1), 61–66.
- Ioannidis, J.P., 2010. Expectations, validity, and reality in omics. *Journal of clinical epidemiology*, 63 (9), 945–949.
- Kruger, S., et al., 2018. Repeated mutKRAS ctDNA measurements represent a novel and promising tool for early response prediction and therapy monitoring in advanced pancreatic cancer. *Annals of oncology : official journal of the European Society for Medical Oncology*, 29 (12), 2348–2355.
- Liu, Z., et al., 2017. Prognostic value of the CRP/Alb ratio, a novel inflammation-based score in pancreatic cancer. *Annals of surgical oncology*, 24 (2), 561–568.
- Mackay, T.M., et al., 2019. Association between primary origin (head, body and tail) of metastasised pancreatic ductal adenocarcinoma and oncologic outcome: a population-based analysis. *European journal of cancer*, 106, 99–105.
- Mackinnon, A., 2010. The use and reporting of multiple imputation in medical research – a review. *Journal of internal medicine*, 268 (6), 586–593.
- McMillan, D.C., 2013. The systemic inflammation-based Glasgow Prognostic Score: a decade of experience in patients with cancer. *Cancer treatment reviews*, 39 (5), 534–540.
- McShane, L.M., et al., Statistics Subcommittee of the NCI-EORTC Working Group on Cancer Diagnostics, 2005. REporting recommendations for tumour MARKer prognostic studies (REMARK). *European journal of cancer (Oxford, England : 1990)*, 41 (12), 1690–1696.
- Piciocchi, M., et al., 2017. The neutrophil/lymphocyte ratio at diagnosis is significantly associated with survival in metastatic pancreatic cancer patients. *International journal of molecular sciences*, 18 (4), 730.
- Sauerbrei, W., et al., 2018. Reporting Recommendations for Tumor Marker Prognostic Studies (REMARK): an abridged explanation and elaboration. *Journal of the National Cancer Institute*, 110 (8), 803–811.
- Schafer, J.L., and Graham, J.W., 2002. Missing data: our view of the state of the art. *Psychological methods*, 7 (2), 147–177.
- Sobin, L. H., Gospodarowicz, M. K., and Wittekind, C., 2009. *International Union Against Cancer (UICC) – the TNM classification of malignant tumours*. 7th ed. Hoboken, NJ: Wiley-Blackwell.

- Strijker, M., *et al.*, 2019. Circulating tumor DNA quantity is related to tumor volume and both predict survival in metastatic pancreatic ductal adenocarcinoma. *International journal of cancer*, 146 (5), 1445–1456.
- Tas, F., *et al.*, 2014. Serum levels of LDH, CEA, and CA19-9 have prognostic roles on survival in patients with metastatic pancreatic cancer receiving gemcitabine-based chemotherapy. *Cancer chemotherapy and pharmacology*, 73 (6), 1163–1171.
- Ter Veer, E., *et al.*, 2018. Consensus statement on mandatory measurements in pancreatic cancer trials (COMM-PACT) for systemic treatment of unresectable disease. *Lancet oncology*, 19 (3), e151–e160.
- van der Geest, L.G.M., *et al.*, the Dutch Pancreatic Cancer Group, 2017. Nationwide trends in chemotherapy use and survival of elderly patients with metastatic pancreatic cancer. *Cancer medicine*, 6 (12), 2840–2849.
- van der Sijde, F., *et al.*, 2019. Circulating biomarkers for prediction of objective response to chemotherapy in pancreatic cancer patients. *Cancers (Basel)*, 11 (1), 93.
- Vincent, A., *et al.*, 2011. Pancreatic cancer. *The lancet (London, England)*, 378 (9791), 607–620.
- Von Hoff, D.D., *et al.*, 2013. Increased survival in pancreatic cancer with nab-paclitaxel plus gemcitabine. *New England journal of medicine*, 369 (18), 1691–1703.
- Yu, S.L., *et al.*, 2017. Serum lactate dehydrogenase predicts prognosis and correlates with systemic inflammatory response in patients with advanced pancreatic cancer after gemcitabine-based chemotherapy. *Scientific reports*, 7, 45194.