



# THE ARCHWAY

WITHIN

Course Descriptions

Everywhere

Paul Louis

Page 4

From the Air Centerspread

Friday, November 9, 1979

Bryant College, Smithfield, Rhode Island

Volume 46, Number 13

## Beard Visits Bryant

At Last

## 91.5 Stereo

### Internship Program

By Candy LaBombard  
Of The Archway Staff



Photo by Mark Toms

Congressman Edward Beard was at Bryant Monday afternoon, November 5, to address internship coordinators from a number of Rhode Island Colleges. The event was the Rhode Island Congressional Internship Program, a state-wide program which enables college students to intern for one week during the spring semester in Rhode Island's congressional offices in Washington, D.C.

This year's planning session was held at Bryant under the chairmanship of Dr. Glemm Camp, statewide coordinator of the internship program. In addition to Congressman Beard and his aides, administrative staff from Senator Claiborne Pell's office were also present. Beard and Pell both host students as interns in their respective offices.

Monday's meeting evolved around the policies for the internship program and the allocation of time slots to the various colleges. Nine other Rhode Island colleges participated in the program. The internship coordinators from each were present Monday. The allocation of time was designed to cut up the spring semester so that not all colleges had students in Washington at the same time. Bryant has received two one-week periods, the weeks of March 10 and April 14 (which coincide with Spring and Easter Breaks), to send students to the congressional offices.

The Congressional Internship Program provides students with "a great opportunity to see the U.S. government in action," according to Beard. Students interested in learning about the government and its processes may apply for the internship positions by seeing Dr. Camp in early December. Six students will be selected for the program the spring. Selection will be completed by the beginning of March.

While in Washington, students will be involved in the routine and

in Washington.

Students must have their objectives in mind prior to their arrival in Washington, according to Beard. The congressman feels it is very non-routine activities of a congressional office. They will attend meeting with subcommittees and executive branch personnel. At night, cultural activities will be planned including sightseeing, lectures, and concerts. To assist in meeting the expenses for the week, Bryant offers a stipend of \$175 to the students selected for the program. This amount provides for the essential expenditures while important that an applicant be informed of the goings-ons of the government, especially through reading the newspapers.

Any Bryant student may apply for the internships, whether a resident of Rhode Island or not. Students may be enrolled in any major; preference will be given, however, to those applicants considering a position in any level of the government. The main criteria used in selecting applicants, according to Dr. Camp, is what the student will get out of the internship and how well he/she will perform in Washington.

### Beard on KENNEDY

by Candy LaBombard  
of The Archway Staff

While at Bryant for the Rhode Island Congressional Internship Program on Monday, November 5, Congressman Edward Beard spent a few minutes speaking of his feelings on Senator Kennedy's campaign for the Presidency. Kennedy had not officially announced his candidacy as of Monday. Beard had, however, received an invitation to attend the press conference Wednesday morning at Fanueil Hall where Kennedy made the announcement on his running for the Democratic nomination.

Beard was one of the first people in the country to come out in support of Kennedy as President. In his words Kennedy "will make us #1 again. He is one of the few to provide leadership in the world, not just in the country." Beard feels Kennedy has great concern for domestic affairs, unlike President Carter's "commitment to all but the U.S."

During Carter's visit to Providence on Monday, October 29, the President acknowledged the presence of three of the four members of Rhode Island's delegation to Congress at the Coalition of Northeastern Governors' "energy summit." Beard's presence, however was not acknowledged. Neither was Beard invited to return to Washington aboard the President's plane as were the other members of the RI delegation. When asked his feelings on these incidents, Beard replied that he felt the President embarrassed himself more than anything else.

By Duane Lefevre  
Of The Archway Staff

WJMF successfully went stereo mid-Saturday afternoon last week. The much awaited operation was not without problems though the station is experiencing a number of small difficulties with their signal.

One of the primary problems is the lack of strength of vocal channels, causing voices and singing on albums to seem muted. Steve Feinberg, Station Engineer is relatively sure of approximately where the problem is coming from. A stereo modulation monitor is needed to definitely locate the problem so that it may be corrected. Feinberg is presently checking area radio stations broadcast suppliers in an attempt to borrow one. All FM stations larger than 10 watts are required to have one of these monitors but are not allowed to take it out of service to lend it in a case such as this.

The signal is also accompanied by a high-pitched whistling tone. The tone is a splash signal from the pilot frequency. It is part of every stereo signal but should be inaudible: It is a cue for the stereo

light on Hifis to signify a stereo station. This problem can also be corrected if a modulation monitor can be obtained.

John Lombardi, the first class engineer who repaired and installed the stereo generator last week, will be up from New York again this week to work on the problem.

Station officials recommend switching your stereo to the mono position until the situation is corrected if the quality of the signal is bothering you.

The station has also seen an increase of power due to a tune of the transmitter last Saturday. The station is again broadcasting at ten watts, up from the eight watts of recently.

As to when a Stereo modulation monitor would be found, no one knows. There is a possibility that the station may purchase the equipment, as they will need one when they increase power to 225 watts. New models list at about \$3500, used models are about \$2000.

In an unrelated note, WJMF will be off the air this Saturday, Sunday and Monday until 5 p.m. due to staffing shortages over the long weekend.

## Ban has No Effect on Bryant

by Janet Miller  
of The Archway Staff

Residents of Bryant College should be happy to hear that the drinking ban which was passed at the Smithfield town meeting has absolutely no effect on drinking on campus.

The law which was voted in on

October 23 prohibits drinking on public streets, sidewalks and in parking lots. This does mean that students can no longer walk back from O'Brien's or the Library with open bottles of alcohol. According to the Smithfield Detective Squad, the new law will be strictly enforced, and violators will be subject to a fine.

## Headlines!

### International:

\*Khomeini Won't See Envoys Sent by U.S.; P.L.O. Bid Advances

\*Argentine Official Attacked by Gunmen in Buenos Aires

\*Seoul Said to Plan End of Martial Law

\*At the U.S. Embassy in Teheran, Prayers and Slogans Fill the Air.

### National:

\*House Passes a Bill Mandating Minimum for Welfare Checks

\*Kennedy Declares His Candidacy, Vowing New Leadership for Nation

\*Administration Says Iran Oil Still Flows

\*Many in Poll Favor U.S. Negotiation With the P.L.O.

\*Dip In Job-related Deaths Found in private Industry

\*Kennedy Eagerly Faces Question About His Wife

\*Carter Aides Weigh Rebuttals to Kennedy

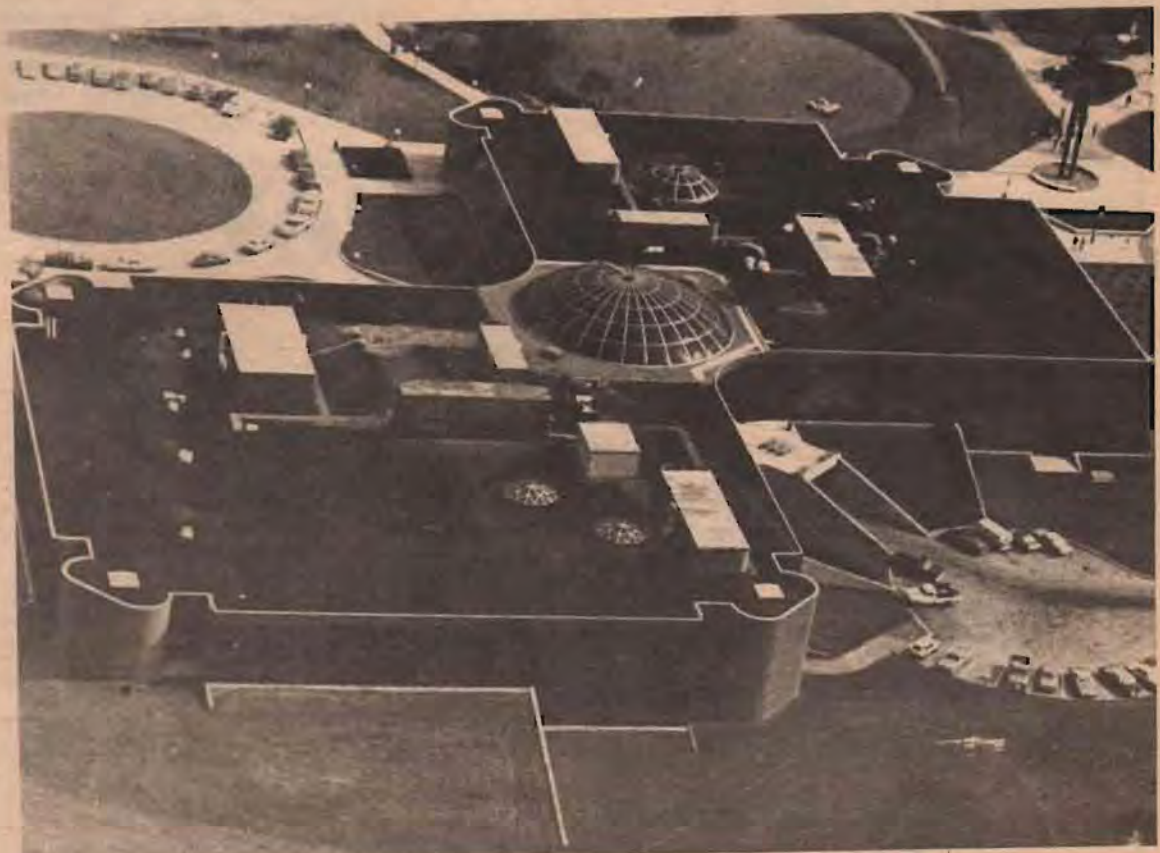


Photo by Dave Alfredson



# THE OPINIONS



### FROM THE EDITOR'S DESK....

This is the most difficult editorial that I have had to write so far. Not necessarily difficult in terms of words, because the words come

rather easily, but difficult in that I never wanted to write this editorial, but now, I am forced to.

THE ARCHWAY's staff is the smallest that it has been in recent memory. As I write this, just five people are here, working under adverse conditions, to make sure that you have a newspaper to read this morning. Student involvement in THE ARCHWAY is at a low

ebb. Even the meager student support we did receive at the beginning of the year has dwindled to a mere handful. Five major editorial positions either are vacant, or are about to become vacant. **THE ARCHWAY IS BACKED UP AGAINST THE WALL.**

In a desperate attempt to fill the positions of Production Manager and Assistant Production Manager, THE ARCHWAY was about to hire them on work/study. Even this proved disappointing. In one week,

we received only four applications. Furthermore, THE ARCHWAY's editorial Board believes that is only a short term solution that could prove complicated in the long run.

With the absence of additional student involvement, THE ARCHWAY has no alternative, but to become a bi-weekly paper, starting January 25, 1980, thus breaking a 14-year tradition started when THE ARCHWAY went weekly in 1966.

As the Editor-in-Chief, I fought the inevitable as long as I could, but soon, I may have to give in. If I were to leave, THE ARCHWAY wouldn't be bi-weekly or weekly—it wouldn't be here at all, for at the moment, I have no ready successor.

THE ARCHWAY is your paper. You pay for it, through your student activity fee. Yet it goes deeper than that—THE ARCHWAY is YOUR paper because it is about YOU—what you do, how you spend your time—what you want to read. Most importantly, you are supposed to

contribute to THE ARCHWAY, you can contribute stories, ideas, or your valuable time. Time for typesetting and/or production. At this time, we may have to stay up until all hours of the night, yet, if there were more people to share the work involved, we wouldn't be here long at all!

In the coming weeks, THE ARCHWAY is going to make a concerted effort to find YOU a place in our organization. Is it hard to join THE ARCHWAY? Not at all. Just come to our office and find when the meeting for your particular interest [writing, photo-

graphy, typesetting, or production] is and attend one of those meetings. It won't be long before you are another dedicated ARCHWAY staffer, making sure Bryant College has the complete, WEEKLY news coverage it needs and deserves.

rather easily, but difficult in that I never wanted to write this editorial, but now, I am forced to.

we received only four applications. Furthermore, THE ARCHWAY's editorial Board believes that is only a short term solution that could prove complicated in the long run.

As the Editor-in-Chief, I fought the inevitable as long as I could, but soon, I may have to give in. If I were to leave, THE ARCHWAY wouldn't be bi-weekly or weekly—it wouldn't be here at all, for at the moment, I have no ready successor.

THE ARCHWAY is your paper. You pay for it, through your student activity fee. Yet it goes deeper than that—THE ARCHWAY is YOUR paper because it is about YOU—what you do, how you spend your time—what you want to read. Most importantly, you are supposed to

In the coming weeks, THE ARCHWAY is going to make a concerted effort to find YOU a place in our organization. Is it hard to join THE ARCHWAY? Not at all. Just come to our office and find when the meeting for your particular interest [writing, photo-

graphy, typesetting, or production] is and attend one of those meetings. It won't be long before you are another dedicated ARCHWAY staffer, making sure Bryant College has the complete, WEEKLY news coverage it needs and deserves.

## Advanced Courses to Be Offered

Bryant College is offering three advanced undergraduate Public Administration courses to PA majors. Two will be offered this spring and one next fall.

The first advanced course offered this spring is Comparative Public Administration (PA 383) which will be offered by Prof. Glen Camp on MWF at 11 a.m. You don't need any prerequisites for this course, but PA

200 (Intro. to PA) or Approaches to Politics (SS 271) would be helpful. The second advanced course offered this spring is The Policy-Making Process (PA 300) which will be offered by Prof. Stuart Shapiro on Tue. and Thurs. at 10 and Wed. at 9 a.m. You need either his permission or PA 200 and PA 300 as prerequisites to register.

Next fall (Fall of 1980/81) The PA Budgeting Process (PA 400) will

be offered on MWF at 2 p.m. Prof. George de Tarnowsky is scheduled to teach this required course and you need his permission or PA 200 and PA 300 as prerequisites to register.

\* If you have any questions about these courses or about the PA undergraduate program, drop in to see Prof. Camp in Room 225 M—F at 12 noon or call him at noon at 231-1200, ext.258.

## Recipients Honored

At a luncheon meeting held Thursday, October 25, in the Arris Dining Room, President O'Hara welcomed and congratulated ten Bryant freshmen who are this year's recipients of Presidential Scholarships. The Scholars attending the luncheon included Suzanne Brodeur, Lisa Daly, Susan Jensen, Maureen Kinne, Janet Miller, Daniel Murray, Salvatore Saucio, Judith Sihau, Lyn Simpson, and Eliot Wright. The scholarship winners were selected last spring by the College Scholarship Committee primarily on the basis of their

S.A.T. scores and their high school class rank. Other factors taken into consideration were the difficulty of their high school programs and also their extra-curricular and community activities.

Professor James R. Estey, Chairperson of the Scholarship Committee, arranged for and presided at the luncheon. The major feature of the program was a dialogue between the scholars and President O'Hara concerning the quality of the academic program and of student life at Bryant. The students praised Bryant for its beautiful campus, and for the

generally high quality of its faculty. They were impressed with the dorms, and were pleased with the variety of Bryant activities. They also praised the Honors program in Math and the relatively small size of most of their classes.

The students were somewhat critical of freshman English which they found useful but rather boring. More practical applications were called for in their business courses, especially in Management. Several Scholars asked about the possibility of foreign language offerings. There was a discussion of alcohol use and abuse on campus, with most of those present agreeing that drinking seems to be an important part of youth culture today. Complaints were also

cont. to page 3, col. 3

## Internships Offered

The Social Science Department of Bryant College is offering several undergraduate Internships. The first is for sophomores only who would be possibly interested in graduate work leading to a career in government at the state, local, or national level. It pays a stipend of \$5,000.00 per year and is renewable under certain conditions. The deadline for this Harry E. Truman Internship is November 15, so contact Prof. Glen Camp as soon as possible if you are interested.

The second Internship is with the

Washington Center for Learning Alternatives Winter Session. This Internship costs the student about \$500 and runs from January 1-23, 1980. Called "Winterrim '80" it will focus on the impact of the 1980 Elections on Domestic and Foreign Policy Decision Making. A series of interesting discussion groups and meetings are arranged for the interns led by Drs. Stephen Wayne and Bernard Reich of George Washington University. Again, if your schedule permits and you wish to apply, see Prof. Camp. The deadline for this WCLA Internship is November 21 but be sure to come in earlier to arrange for the paper work.

The third Internship is in State and Local Government. This Internship pays a stipend of between \$100.00 and \$700.00 and places the Intern in R.I. Government in the Legislative, Executive, or Judicial branches. For advice and help see Prof. Stuart Shapiro or Prof. Desmond Camacho or Contact Prof. Camp M-F at 12 noon in Room 225 or call Prof. Camp at Noon M-F at 231-1200.

All Bryant undergraduates regardless of major are eligible for all these Internships.

## Advertising Career Conference

Where? Pace University, Graduate School of Business, New York City  
When? Saturday, December 1 -- 9:00-5:00

For? Any student interested in pursuing a career in advertising/communications

A general meeting will be held on Tuesday, November 13th at 4:00 in Room 270. Any student interested in attending the conference **Must Attend** this meeting. Registration will be completed at this time. Any questions may be directed to Bev Fogg in the Office of Career Planning and Placement.

## Counseling Center News

For Men Only....

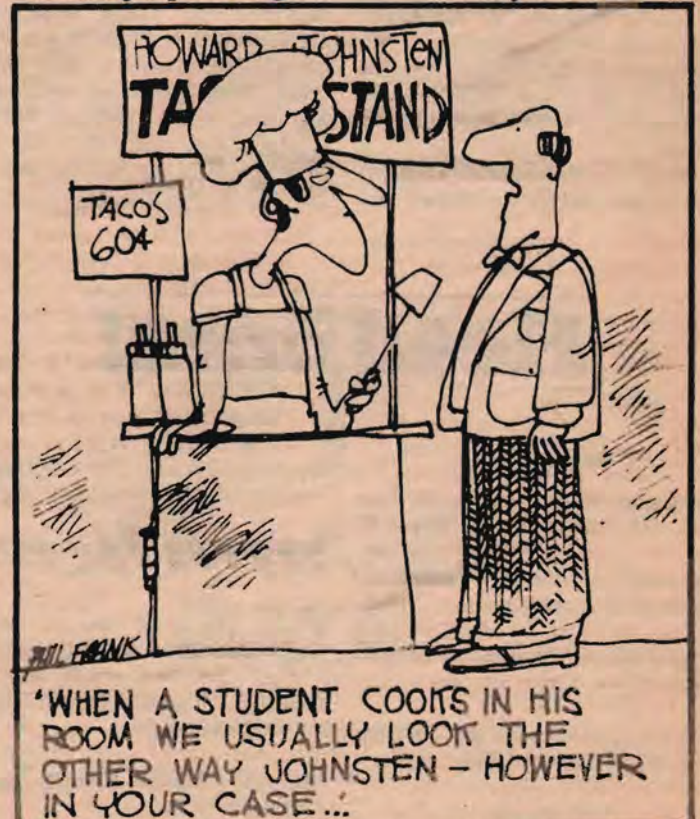
The Counseling Center will be offering a new workshop open to the entire male community at Bryant: **Men's Discussion Group**. The purpose of this group will be to provide the men at Bryant with an atmosphere in which they can feel free to discuss common concerns that they encounter in their daily lives. Some of the topics that may be discussed are dating, relationships, the role of men in today's society, pressures that men encounter, and ideals that men are expected to live up to.

The workshops will begin on Tuesday, November 13, at 3:30 p.m. in the Counseling Center. Mike Morcone, a Student Assistant and Dan Markowitz, counselor, will conduct the group.

Anyone interested in joining the group, sign up now at the Counseling Center.

"Frankly Speaking"

by Phil Frank



© FRANKLY SPEAKING Post Office Box 1523 East Lansing, Michigan 48820

# THE ARCHWAY

Editor-in-Chief ..... Craig Brickey  
Business Manager ..... Dave Alfredson

News Editor ..... Candy LaBombard  
Feature Editor ..... Katie Cassels  
Sports Editor ..... Gary Goldberg

Photography Editor ..... Mark Toms  
Asst. Photography Editor ..... Mike Marder  
Advertising Manager ..... Bill Huckman

Administrative Secretary ..... Nadine Parker

News/Features: Mike Durkin, Duane Lefevre, Phil Lucey, Donna Maynard, John P. O'Neil, Ely Pappas, Anne Quill, Cindy Shuman

Production: Darleen Brown, Frank D'Ostillo, Cathy Hanouille, Joe Menhart, Chip Merritt, Sharon Nicklas, Laurice Piche

Sports: Pete Baughman, Larry Wright, Bill Varney

Phototypesetting: Karen Cooper, Theresa Faraci, Mary Morgado, Donna Racine, Terri Raymond, Rosalie St. Jean, Becky Seibert, Carol Shortman

Photography: John Petruilis

Graphics: Elaine Wuertz

The Archway is composed weekly during the academic year by the undergraduate students of Bryant College. The publisher is Bryant College. This newspaper is written and edited by a student staff and no form of censorship is exerted on the contents or style of any issue. The news and opinions expressed in this publication are those of the students and may not necessarily reflect the official views of the faculty and administration of Bryant College. The Archway is printed by Weston Graphics, Bellingham, MA, by offset.

Deadline for all submissions and ads is Midnight Tuesday. Copy considered objectionable by the Editorial Board will not be accepted. All submissions become property of The Archway and cannot be returned. Announcements and news released from the College and surrounding community are printed at the discretion of the Editor-in-Chief.

Offices are located on the third floor, south wing of the Unistrukture (Room C-376). Mailing address is Box 37, Bryant College, Smithfield, RI 02917. Phone number (401) 231-1200 Ext. 311 or 313.



# THE ORGANIZATIONS

## CIA

The CIA is sponsoring a trip to Jai Alai Friday, November 16. The five-dollar ticket includes the bus, a reserved seat, program, and one drink. The bus will leave from the Rotunda at 5:30 p.m.

Congratulations to those couples who placed first, second and third in Personality Weekend. A special thanks to Carol Oliver and Rene Workman who represented the CIA in the competition.

On November 30 the commuters will sponsor a mixer featuring "Homebru." The Mixer will start at 9 p.m. in the Pub. Tickets are 75¢ per person.

CIA day last Sunday turned out to be a success. The people who planned and organized the day did an excellent job.

The CIA volleyball teams lost their games on Sunday and Tuesday. The A team put in a fine effort Sunday but came up empty handed. On Tuesday night the B team rallied from an 8-0 deficit in the second game but couldn't hold on for the victory. Both teams have a 1 and 2 record.

## Mountaineering

Last Thursday's meeting was a success. We accomplished almost all of what was on the agenda, including finalizing plans for tee shirts, drawing up a budget request, deciding what new equipment is needed, and we even discussed a joint Bryant-RIC Himalayan Expedition in the distant future.

Friday's Purgatory climb was very satisfying, even though our friendly local alcoholic park ranger was there again. Luckily our fearless leader, Fred, remembered the permit.

My compliments to the new climbers, who displayed a lot of poise and determination in tough situations.

## WJMF

WJMF is now STEREO!! We are hoping everyone will tune in and help us celebrate.

We have also expanded hours this past week. Our new hours are: Monday-Friday 11 a.m. to 2 a.m.

Saturday 8 a.m. to 8 a.m.

Sunday 10:30 a.m. to 2 a.m.

We will be off the air this weekend due to the holiday. We will not be on Saturday or Sunday and will go back on the air Monday at 5 p.m.

D.J. of the Week this week is Miriam Wiesel.

We are introducing a new program called Block Party. Every Wednesday from midnight to one WJMF will be playing a SOLID HOUR of one feature artist. This Wednesday Block Party features Steely Dan. Tune in for an uninterrupted hour of music the Wednesday night from 12 to 1. We welcome you artist suggestions for Block Party.

Have you always wondered what it would be like to be a disk jockey? Well, now is your chance to find out with BRYANT SPOTLIGHT. Submit your five favorite songs (or albums) to box 36 by 5 p.m. on Wednesday. WJMF PICKS THE BEST ENTRY FROM THOSE SUBMITTED SO FAR. The winner, announced on Thursday, gets to man the controls with the help of one of our disk jockeys from 7 to 8 on Sunday. The winner also receives a complimentary album.

On November 17, WJMF Presents a Saturday Night party not

soon to be forgotten. Northeast Expressway, one of New England's most popular bands, and a special guest act will be appearing in Salmanson Dining Hall from 9 to 2 on Saturday, November 17. Mixed Drinks, Beer and Wine will be served throughout the night. It would be an excellent time of rock and roll.

The Second Annual WJMF Holiday Craft Festival is going well. The event, featuring craftsmen from around New England will be from noon to 5 p.m. on Sunday December 2. It is a great time to do your holiday shopping. If you are interested in selling at the Festival contact WJMF at 231-9150 for more information.

Don't forget to tune in for "Faculty Focus" every Wednesday from 4:30-5 p.m. and the Longhorn Information Series every Sunday morning from 10:30-11 a.m.

Happy listening in STEREO!!

## Brycol

The Mixology course will be held on Nov. 14th and 15th in the Faculty Dining Room. The course starts at 6:30 and all registrants must bring their tickets. (If tickets are not sold out as of Friday, they will be on sale Tuesday, Nov. 13 in the Rotunda.)

Be sure to stop by the Boutique between Nov. 13 and Nov. 20 to check out the "Turkey Day Sale".

## ISO

The bake sale on October 31 was a success. Thank you to all who helped.

The ISO and the Secretarial Society are sponsoring a mixer in the Pub on Friday night, November 9 from 9-1 featuring The Mundanes.

Our next meeting will be on Thursday, November 15 at 3:15.

# THE INQUIRING PHOTOGRAPHER

Question: What do you think of the preregistration system at Bryant?

Photos by Mark Toms  
Interviews by Katie Cassels



Rich Taylor: "As with any lottery, everyone takes a chance."



Doug Boyle: "I think it is good right now, but if someone gets a bad number this semester, they should be able to get a low one to make it fair."



Debbie Tima: "It's different and it's confusing."



Frank Viscusi: "It would be alright if I got a low number."



Maureen Feiffer: "It's kinda confusing, there should be a more organized way to do it."



Karen Cable: "I think it's pretty fair."

# THE SENATE

## Senator of the Week



Photo by Mark Toms

## Caren McGauley

Caren is a senior Management Major from Forestville, Conn. This is her first year on the Senate. Previous to this year, she was involved in many school activities. She has been a member of the Management Club for 4 years. Her sophomore year she was on the Ledger Staff and for 2 years she was an Orientation Leader. Even though she was not on the Senate at the time, she helped plan Parents Weekend 1978. She was also on the Academic Grievance Committee which is a College Committee. Also, she is involved in Intra-mural Sports which includes Volleyball and Softball. Caren has also been an RA for 2 years.

This year, Caren has been a very busy person. Her duties of the Senate include Chairperson of the Ad Hoc Committee and she is also a member of the Senior Activities Committee. As Chairperson of Ad

Hoc, she is trying to implement a foreign language program. She is also organizing "Hunger Nite". She was responsible for organizing the Blood Drive sponsored by the Senate. As a member of the Senior Activities Committee, she works on monthly activities which include Happy Hours, Quiet Entertainment, the Senior Banquet, etc. Caren was also a member of the Freshmen Elections Committee.

Caren also works in Admissions Office. She conducts tours, processes applications, and does clerical work.

Caren states, "My advice to students is to get involved in all aspects of the College including clubs, organizations, sports and work related areas. Take advantage of opportunities Bryant offers for student involvement and participation." Also, "Senate has given me insight into working political systems and the details involved in making important decisions. The experience I have gained from working with others, investigating problems, organizing and planning activities, and taking on responsibilities of others will be significant to my success in future jobs and activities." Feel free to stop and talk with Caren during her Office Hour on Monday at 11:00.

## Senate Thanks

The Executive Council and the Student Senators would like to thank Dottie Pope and Colin McCormack for their fine job in representing the Student Senate for Personality Weekend. Also, they would like to thank KT, APK, and Beta for allowing us to put up a candidate.

## Senate Resume Service

This involves comp-setting a resume and thus giving it a more professional appearance. Surely you want your resume to stand out when your prospective employer reviews yours as well as the resumes of others.

The Resume Service is furnished by the Student Senate at the cost of \$10 for a one page resume and \$13 for a two page resume. All interested students prepare a typed resume and bring it to Cathy Anderson in the Senate Office. If you have any questions please feel free to come into the Senate Office at any time.



cont. from page 2, col. 3

registered about the uncomfortable temperatures in some of the classrooms.

At the end of the meeting, the scholars expressed their appreciation for the opportunity of the dialogue, and suggested another luncheon meeting in the spring.



# THE ENTERTAINMENT

## Heroes of the Night



By Paul Louis

"Hey Paulie!" I turned quickly around to see who had called, and standing in the hall was an old ex-shipmate I had known in my Coast Guard days by the name of Flamemoe Jackson. We shook hands vigorously. "Damm you've built up a strong grip there Paulie!" remarked Flamemoe. "It comes from living this college life, Flame." "You nmean that the girls hold out that much?"

"No, no," I said ignoring the truth of what he said. "I just carry alot of books. What the hell are you doing here at Bryant anyhow?" "I'm here to pick up my little burntout brother for the weekend," answered Flamemoe. "Come on Paulie let's go get a coffee and and you can tell me if you've become a human being yet." "Sorry Flame," I said as we headed for the pub, "I'm afraid that trying to be a human being at Bryant is like trying to learn ballet from a strip-tease dancer. The basic steps are obscured by other motions!"

"How many Vets go to Bryant anyway?" asked Flamemoe stirring his outrageously priced coffee. "Well there are now 45 full time students not counting Russian troops we have living on campus." "Are all your expenses covered by the GI Bill?" "Let's put it this way Flame, all the Vets here have outside jobs with the exception again of the Russian troops." "What do they do?"

"What else?" Theytrain the R.A.'s" Flamemoe shifted in his chair and a smile came over his face. The resulting noise and smell caused everyone in the Pub to look at us in disgust.

### SPB Presents "Annie"

The Student Programming Board will be sponsoring a trip to the Colonial Theatre in Boston on December 4, to enjoy the light musical, "Annie." This play is based on the comic strip "Little Orphan Annie."

The endearing cast of characters—Annie and the gruff, good-natured Daddy Warbucks, the wonderfully wicked Headmistress Hannigan, a stage full of lovable, gutsy kids and Annie's adorable dog, Sandy—will totally capture your heart in this superb show that an away with most of the awards—7 Tony Awards including "Best Musical 1977," 7 Drama Desk Awards, 5 Outer Critics' Circle Awards, the New York Drama Critics' Circle Award, the Theatre World Award, Cue's Golden Apple Award and the 1978 Grammy Award. Leapin' lizards, what a show!

Photo by Mark Toms  
"Barking crickets!" he explained. "Sorry Flame," I said while getting up to make my escape. "You've got to understand that passing gas is not as big a status symbol here at college as it is on a ship." I looked at the burnt remains of his seat, no wonder he was nicknamed "Flamemoe!"

"You still got the life here at college Paulie," remarked Flame as we walked around the campus. "It must be quiet a change for you not to wear a uniform day in and day out." "But that's where you're wrong!" I corrected. "We may not have a uniform here at Bryant, but there is a definite style. You see, a shirt or blouse must have the top three or four buttons unbuttoned, and a gold chain must be worn around the neck. In fact that's how you tell who's who here at Bryant. The more buttons you leave unbuttoned and the greater amount of gold you wear around your neck signify how important you are!" At this time, a middle-aged man wearing no shirt and large bar of gold around his neck, passed us and entered the school. "Who was that?" inquired Flamemoe.

"Gee Paulie, remember when you came on the ship fresh from Boot camp and on the first cruise me and the guys sent you to the Captain's cabin for a bucket of steam? Remember how we put you on the bow one night and told you that you had the 'Mail Bouy' watch." "Hey Flame, let's not talk about being dumb. After all you were fourteen years old before you could wave goodbye!" "Speaking of dumb," continued Flamemoe, "How are you doing here at Bryant?" "To be perfectly honest Flame, I think I've been educated

beyond my intelligence." "Hard courses?"

"No, its just that the material has changed drastically from the time you and I went to school. For example, I almost fell out of my chair when my professor in my American History class outlined the sex practices of early colonial withches." "You're kidding?" said Flamemoe in disbelief. "Remember that porno book you bought in Baltimore about witches?" I asked. Flamemoe nodded yes.

"Well take it from me, it's historically correct!" "I think I'm doing OK in English," I answered. "Why just last week the professor noted on my essay that I have many original ideas, especially when it comes to spelling!"

We were now sitting at the base of the Rotunda and I watched with amusement as Flamemoe eyed each passing girl and we made sexist remarks about their character. At one point, a tall staturesque, darked-haired beauty caused Flamemoe to jump up and exclaim to her, "I want to have your baby!" I looked the other way in embarrassment as the girl nimbly sidestepped Flamemoe.

"Nice behind." Flame muttered after the retreating figure. "Shut up and sit down!" I said in a loud whisper. "Where do you think you are, at the Hillbilly Ranch back in Boston?" Flamemoe nudged me in the side. "Is it true what they say about college girls huh, huh? How many have you used, you sly devil?" I knew this question was coming and I had to be careful how I answered it, after all, there's a reputation at stake. (Mine!)

"That all depends," I started, "on whether or not you want the truth or a good lie." Fortunately, Flamemoe opted for the lie.

It was getting near time for me to leave for work so I prepared to say goodbye to my old friend. "One last question before you go, Paulie. Do you miss being in the Coast Guard?"

"Of course not," I shot back. "I got seasick everytime the ship left port, I hated getting up at 3 a.m. in the morning to go to watch, I disliked being bossed around by officers and I got tired of living in a small space with twenty other guys!"

"In othe words," Flamemoe said, "You miss it alot!" I nodded my head in agreement as we shook hands and departed, he to be a hero of the night and myself to continue on the road of becoming a human being.

## Personality Weekend

Shelley Mahon and Tim Doyle [representing Sigma Lambda Theta] were chosen as Mr. and Ms. Personality in the weekend sponsored by Alpha Phi Kappa, Kappa Tau, and Beta Sigma Chi. Runners up were Chris Mangold and Tom Kavanaugh [Phi Epsilon Phi] and Gail Astramowicz and Tom Hill [Sigma Iota Beta].

And you can enjoy it all for the low price of \$15 which includes balcony seat and bus. \$18 will give you the mezzanine. The buses will leave the fron circle at 6:30 p.m. and return at approximately 12:00 p.m. Hurry and get your tickets now for "Annie"—a musical comedy you don't want to miss.

Tickets available in the SPB office beginning November 16.



Photo by Mark Toms

## DJ of the Week

### Miriam Wiesel

Miriam Wiesel, a junior from Westchester County, New York, has been chosen as this week's disc jockey of the week. Miriam is an accounting major and has been involved with the station only a month. However, Miriam has quickly become a favorite on the station.

Her shows feature the sounds of Dan Fogilberg, New Riders and the upbeat tempo of Marshall Tucker Band.

"I enjoy listening to all kinds of music," Miriam says.

Congratulations, Miriam, on a good job.



Photo By Mark Toms



The Departmental Fair, held throughout the week of November 5, provided students with the opportunity to meet with academic

advisors and faculty members from the various departments—just in time for preregistration.



Representatives of the RI Board of Elections were on campus Wednesday and Thursday to register students for voting. The registraton drive was sponsored by

The Senate, as part of a statewide drive by The Student Association of Rhode Island Colleges and Universities.

## THE CALENDAR

**Friday, November 9**  
—Mixer with "The Mundanes," Pub, 9 p.m.-1 a.m.

**Saturday, November 10**  
—Women's volleyball vs. URI; URI Field, TBA  
—"Coping with the Realities of Death" seminar, Aud., 8 a.m.-12 noon.  
—Mass, aud. 5 p.m.

**Sunday, November 11**  
—Mass, Rotunday, 12 noon

**Monday, November 12**  
—NO CLASSES

**Tuesday, November 13**  
**MONDAY SCHEDULE OF CLASSES**  
—Backgammon Club, upstairs Pub, 3:15 p.m.  
—Yugoslavian Basketball team vs. Bryant, gym, 8 p.m.

**Wednesday, November 14**  
—Mixology Course, Faculty Dining Hall, 6:30 p.m.  
—Movie: "A Different Story," Auditorium, 7 and 9:15 p.m.  
—Wine & Cheese, Pub, .75 donation for Cerebral Palsy

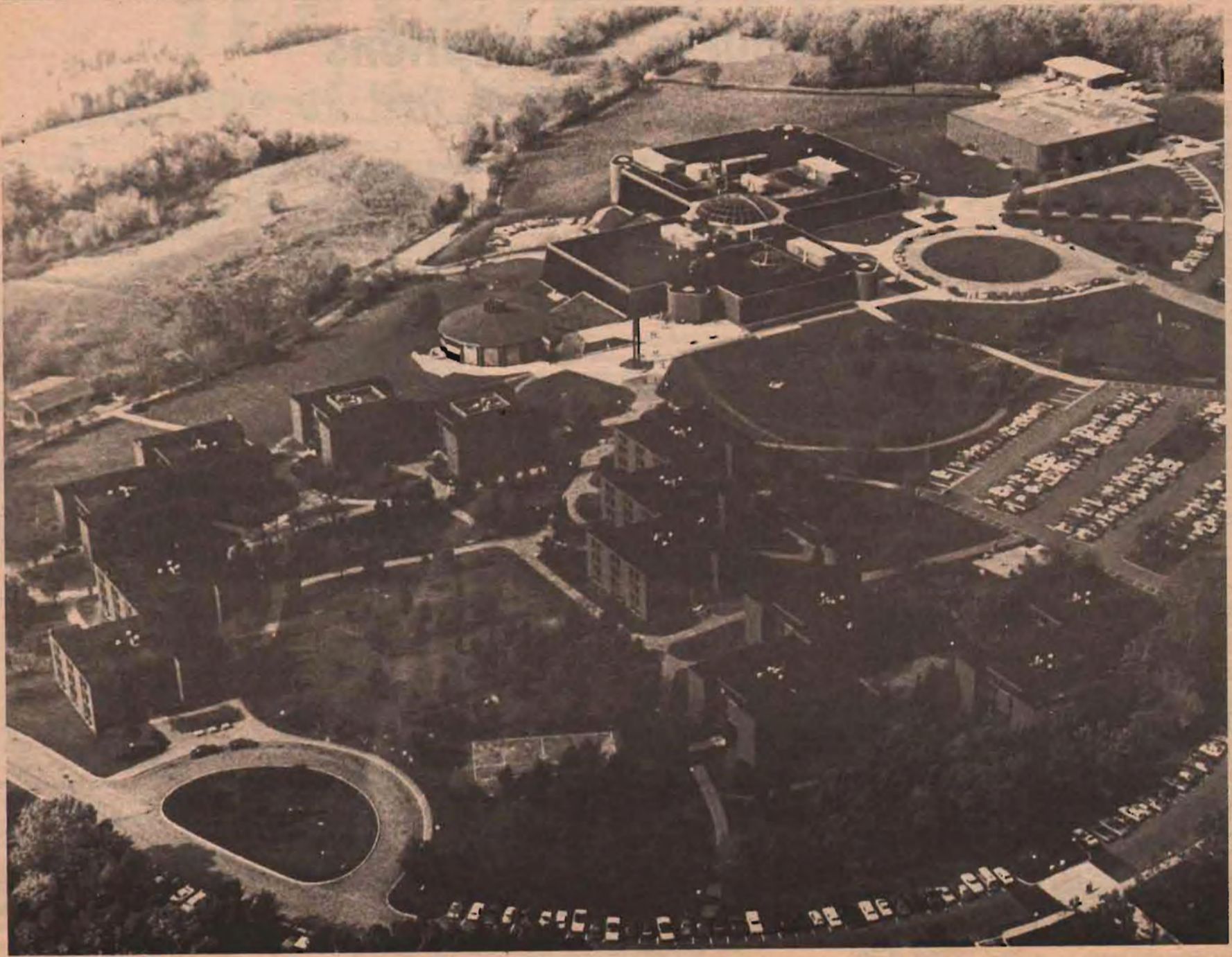
**Thursday, November 15**  
—Mixology Course, Faculty Dining Hall, 6:30 p.m.



# Faculty Course Descriptions

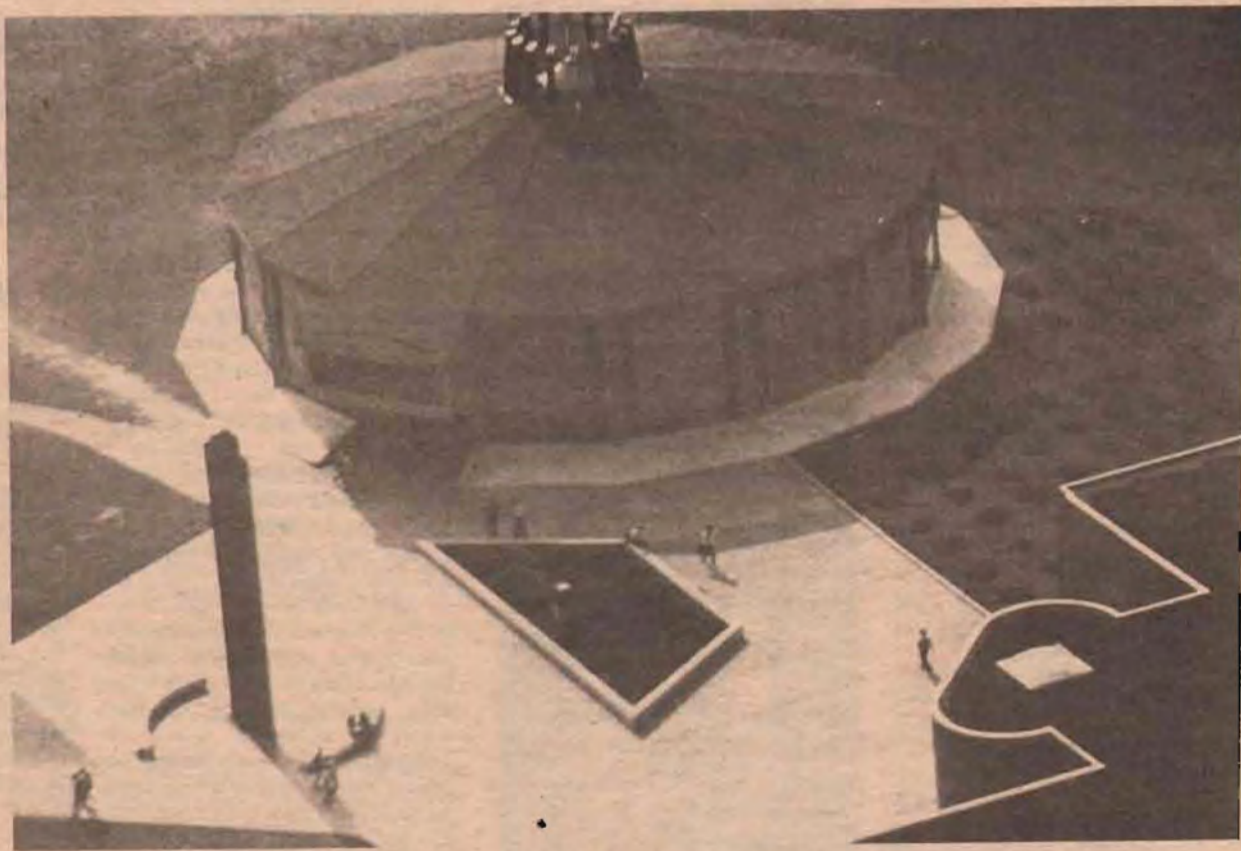
- A 101**  
**Secretarial Accounting**  
**Francis Mahan**  
Designed to provide the secretary with a basic coverage of elementary accounting procedure. Emphasis is placed on recording of daily transaction, preparation of financial reports, banking procedures, payroll preparation, and payroll tax reporting. (Note: This course may not be used in meeting the requirements for accounting majors.)  
Test type: Problems and theory.  
Recommended for Freshman year secretarial majors.
- A 142**  
**Fundamental Accounting II**  
**Mr. Ferguson**  
The second semester of fundamental Accounting which covers such topics as Depreciation Methods, depletion, payroll, partnership, corporations and an introduction to manufacturing.  
Tests: 4, Weight on each: equal. Type: Objective test items and theory and problems. No papers. Problems assigned. 8 cuts allowed.  
Recommended for Accounting and management majors.
- A 142**  
**Fundamental Accounting II**  
**Mr. Weaver**  
Salaries, plant assets, partnership and corporation accounting, liabilities, funds and analysis.  
Tests: 4, Weight on each: equal. Type: Problems similar to homework. No papers or special projects. 8 cuts allowed.  
Recommended for all students.
- A 241**  
**Intermediate Accounting I**  
**Mr. Perlow**  
Chapters 1-4, 6-9, Intermediate Accounting Text. Lecture, no collected homework.  
Tests: 3, Weight on each: equal. Type: Problems mostly—occasional theory. No papers or special projects. Cuts open.  
Required for accounting majors
- A 242**  
**Intermediate Accounting II**  
**Mr. Perlow**  
Chapters 10-15, 21, 24 Intermediate Accounting Text. Lecture, no collected homework.  
Tests: 3, Weight on each: equal. Problems mostly—occasional theory. No papers or special projects. Open cuts.  
Recommended for Accounting and Finance majors.
- A 242**  
**Intermediate Accounting II**  
**Mrs. Blanding**  
Stockholders' Equity, Accounting Changes, Leases and Pension Plans, Accounting for Price-level changes and Analysis of Financial Statements.  
Tests: 3, Weight on each: 1/3. Type: problem solving. No papers or special projects. Cuts: Withheld until start of class.  
Recommended for Accounting Majors—4.
- A 341**  
**Cost Accounting I**  
**Mr. Gaucher**  
Portrays Accounting as a tool of management planning and control, decision models, developing strategies, information and control systems.  
Tests: 3, Weight on each: 1/3. Type: Problems 80-85%—Theory 20-15%. Problem solving assignments, each class. No special projects. Open cuts.  
Recommended for accounting majors.
- A 342**  
**Cost Accounting II**  
**Mr. Gaucher**  
Advanced practice and cost concepts designed to meet job-entry competence for a professional position as Cost Controller in the organization structure.  
Tests: 3, Weight on each: 1/3. Type: Problems 85-90%, Theory 10-15%. Daily assignments—problem oriented. No special projects. Open cuts.  
Recommended for accounting majors.
- A 342**  
**Cost Accounting II**  
**Mr. Hebert**  
For course description, see catalog.  
Tests: 3, Weight on each: 1/3. Type: Problem solving. No papers or special projects. Cuts Withheld until start of class.  
Recommended for accounting majors (5 or above).
- A 343**  
**Income Taxes**  
**Mr. Fontaine**  
Description no prepared to date. see Mr. Lynch's description.  
Tests: 3, Weight on each: 1/3. Type: Problems and objective. (True/false, etc.). No papers or special projects. Cuts open.  
Recommended for junior accounting majors.
- A 361**  
**Managerial Accounting**  
**Mr. Hebert**  
For course description, see catalog.  
Tests: 3, Weight on each: 1/3. Type: Primarily problem solving. No papers or special projects. Cuts withheld until start of class.  
Recommended for Accounting, Finance and Systems/Management majors.
- A 390**  
**Intern/Sem-Soc. ACG.**  
**Mr. Perlow**  
Internship with non-profit organizations open only to seniors, who have already been chosen.  
Recommended for accounting major seniors.
- A 442**  
**Internal Auditing**  
**Mrs. Blanding**  
See catalog for description of course.  
Tests: 3, Weight on each: 1/3. Type: Problem solving and multiple choice. No papers or special projects.  
Cuts withheld until start of class. Recommended for 7th semester accounting majors.
- A 442**  
**Internal Auditing**  
**Mr. Provost**  
For course description, see college catalog.  
Tests: 3, Weight on each 1/3 or 1/2 to student's advantage. Type: Combination-objective, essay and problems. No papers or special projects. Cuts withheld until start of class.  
Recommended for accounting majors.
- A 452**  
**Auditing**  
**Mr. Provost**  
For course description, see college catalog.  
Tests: 2, Weight on each: 50-50. Type: Objective and essay. No papers or special projects. Cuts withheld until start of class.  
Recommended for those students interested in the CPA exam.
- A 444**  
**Advanced Accounting I**  
**Mr. Fontaine**  
Corporate combinations, consolidated financial statements, branch
- accounting, segment reporting.  
Tests: 4, Weight on each: 25%. Type: Problems. No papers or special projects. Open cuts.  
Recommended for Senior Accounting Majors.
- Ec 101**  
**Introduction to Economics**  
**Mr. Ilacqua**  
One-semester course for secretarial students—covers both macro and micro economics.  
Tests: 2 plus quizzes, Weight on each: 1/3. Type: mixed test objective plus essay. 3 Short papers. No special projects. Open cuts.  
Recommended for Secretarial majors.
- Ec 101**  
**Introduction to Economics**  
**Peter Mini**  
Brief survey of forces affecting Market prices, employment, GNP, and Incomes.  
Tests: 4, Weight on each: 1/4. Type: 30 True-false and essays, definitions. No papers or special projects. 6 cuts allowed.
- Ec 114**  
**Macroeconomic Principles**  
**Brian Guck**  
Introduces the student to the basic principles of macroeconomics, including national income accounting business cycles, income determination, and monetary and fiscal problems and policy. International economics, including trade, comparative advantage theory, balance of payments, exchange rates, and trade and finance problems and policies, is also covered.  
Tests: 4, Weight on each: 25%. Type: Multiple choice and true and false. No papers. Wallstreet Journal required. There will be seven quizzes given on Wall Street Journal articles. Open cuts.
- Ec 114**  
**Macroeconomic Principles**  
**P. Mini**  
Deals with factors explaining recessions, unemployment, Inflation, etc. Fiscal and monetary policies.  
Tests: 4, Weight on each 1/4. Type 30 True-false, essays (short)—definitions. No papers. Some research of Economic indicators and Wall Street Journal Reading. 6 cuts.
- Ec 114**  
**Macroeconomic Principles**  
**Mr. Clark**  
For description, see catalog.  
Tests: 3, Weight on each: 1/3. Type: essay. No papers or special projects. Cuts withheld until start of class.  
Recommended for all freshmen.
- Ec 114**  
**Macroeconomic Principles**  
**Mr. Spivack**  
National Income Accounts; Monetary and Fiscal Policy; Inflation; Unemployment.  
Tests: 3, Weight on each: 30%, 30%, 40%; Type: Multiple choice, True/False, and essay. No papers or special projects. Cuts: 3.  
Recommended for all freshmen.
- Ec 114**  
**Macroeconomic Principles**  
**Mr. Gathof**  
For a course description, see catalog.
- Ec 251**  
**Money and Banking**  
**P. Mini**  
The Federal Reserve, monetary policy effect on supply of credit, economic conditions, inflation, balance of payments.  
Tests: 3, Weight on each: 1/3,
- Type: true-false, short essays, definitions, computations.
- Ec 251**  
**Economics Money and Banking**  
**Mr. Clark**  
For description, see catalog.  
Tests: 3, Weight on each: 1/3. Type: essay. No papers or special projects. Cuts: Withheld until start of class.  
Recommended for all students in BS and BA program.
- Ec 281**  
**Regional Economics**  
**Mr. Spivack**  
Location Theory; Rent Theory; Transportation; Urban Public Finance; Housing. This is an applied Economic Theory Course.  
Tests: 2, Weight: 40%, Type: essay. One approximately 10 page paper. No special projects. Cuts: 3.  
Recommended for Economics Management, Marketing and Finance Majors.
- Ec322**  
**Income Theory**  
**Mr. Spivack**  
National Income Accounts; Monetary and Fiscal Policy; Unemployment and Inflation. A theoretical course; A good background in economics in needed.  
Tests: 2, Weight on each: 50%. Type: essay with graphs. An optional paper. No special projects. Cuts: 3.  
Recommended for Economics, Management and Finance Majors.
- Ec 375**  
**Manpower Development**  
**Dr. Gathof**  
For a course description, see catalog.
- Ed 204**  
**Psychology of learning**  
**Mr. Morrison**  
See 1980-81 Bryant College Bulletin for a course description.  
The Education Department is encouraging other majors to take the education courses so that they may become certified to teach business subjects. Upon completing these courses, students are required to teach for one semester. Please see an Academic Counselor for additional information.
- Ed 305**  
**Methods of Teaching Bookkeeping and Accounting**  
**F. Mahan**  
Teaching/learning methods and materials unique to business mathematics and accounting are discussed. Emphasis is on selection of content and selection of teaching activities. Student teaching demonstrations are videotaped. Prerequisites A.141 and Ed. 304.  
Recommend for Education majors, junior year.
- Ed 306**  
**Methods of Teaching Typewriting**  
**Dr. Phillips**  
See Bryant College Bulletin 1980-81 for a course description.  
The Education Department is encouraging other majors to take the education courses so that they may become certified to teach business subjects. Upon the completion of these courses, one semester of student teaching would be required. Please see an Academic Counselor for further details.
- Ed 307**  
**Methods of Teaching Shorthand and Transcription**  
**Dr. Phillips**  
See Bryant College Bulletin 1980-81 for a course description.
- Ed 408**  
**Student Teaching**  
**Dr. Phillips**  
See Bryant College Bulletin 1980-81 for a description.
- Ed 409**  
**Seminar for Student Teachers**  
**Dr. Phillips**  
Please see Bryant College Bulletin 1980-81 for a description. The Internship Seminars for Student Teachers are offered first semester only.
- Ed 410**  
**Educational Measurements and Evaluation**  
**F. Mahan**  
Essential principles of measurement and evaluation in education are introduced. Students construct tests and interpret test scores, utilizing statistical measures. Emphasis is placed on testing in business subjects. Prerequisite Ed 204.  
Recommended for Education majors, senior year.
- E 102**  
**English Composition II**  
**O'Neill**  
The course involves reading short stories, poems and plays perceptively, achieving an understanding of numerous literary terms, and writing five or six short critical analysis papers which interpret the literary works being studied.  
Tests: 2-3 tests and final exam, Weight on each: tests and papers counted as 1 grade each; final exam counts as 2 grades. Type: 60% essay, 40% objective (ID, matching, multiple choice, and/or true/false). 5-6 papers and a library research assignment. Cuts: 8.  
Recommend for all students.
- E 102**  
**English Composition II**  
**Lyons**  
Introduction to short story, poetry, and drama. Continued development of writing skills.  
Tests: 3 quizzes and final. Type: essay. 5 or 6 short papers. One critical paper. Cuts: 4.  
Recommended for all freshmen.
- E 102**  
**English Composition II**  
**Krieger**  
Continuation of E101: a study of essay writing, research paper techniques, and of literature.  
Tests: 4, Weight on each: 10-15% each. Type: 3 essay, 1 objective. 5 essays, 300-500 words each. Cuts: open after first 2 weeks.  
Recommended for all freshmen.
- E 102**  
**English Composition II**  
**Gathier**  
For a course description, see catalog.
- E 201**  
**Written Communications**  
**Barry**  
The course objective is to develop a writing style appropriate to business through the writing of letters and memoranda.  
Tests: 1, Weight on each: weighted twice. Type: objective. 7 or 8 letters and/or memoranda. The class is conducted as a writing workshop and a grade is given for writing done in class. Cuts: open.  
Recommended for all majors, juniors and seniors.
- E 201**  
**Written Communication**  
**Birt**  
Analysis of types of business letters. Readings in literature of business writing. Development of contemporary business-letter style.  
More course descriptions on page 8



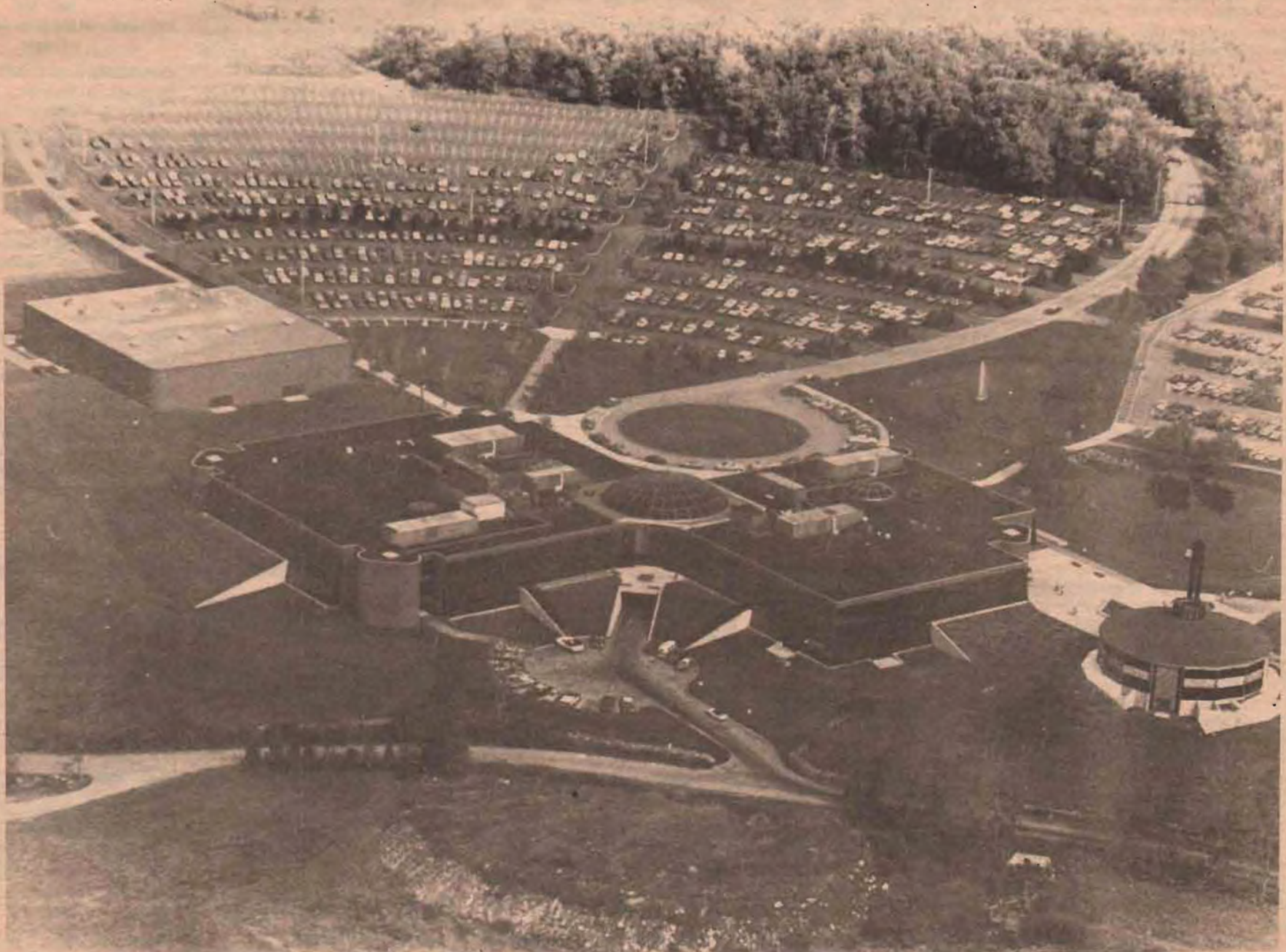


# BRYANT FROM THE AIR

*Photos By Dave Alfredson and Charlie Pickett*













# THE CLASSIFIEDS

## Notices

Is your room in a townhouse empty during winter session? Rent it out to me, please, Dorm cost too high. Call Ted at 232-0066.

Jim-There's a\$\$\$\$\$\$in every crowd nad too bad you had to be it (sound familiar)

Zepperhead is dead!!!!

Pit of 8 is great!!!

Oranges-poranges, who said?—Deja Vu!

Little Mare-Prepare yourself for a head-on collision in the pond!!!

Mary S.-Now you can afford "Affordable Furniture!"

Hey Gut-Are you psyched for the Dead?? 143 Mel

Check out that slit—oh boy! Nice Liz, Katie Fran-Froggie commit suicide again?

Bozo....I need a hand.

Lynn-Clean up that office\$Matt

Cindia:Keep your chin up...I'm here if you need be. Love, Debbia

Zero-Raise any more alcoholic lemon trees?

Dave,Dute: Hoe you enjoyed your Halloween present.

Fran-Froggie was first...Dustin is next...

Linc-Mis you're office hour much—Maddog

Waldo, I wish you would come and get your clothes. My room is getting messy.

Maddogs will always survive!

Waldo, where were you last night at 4 a.m. You weren't in your bed?

Fran-You're one of a kind-Roomie

Waldo, next time your sleeping on the floor!

MG's forever

Waldo please close your curtains you get me really excited.

Lisa-Is that ring for real?

## Still More Descriptions

Type: objective. No papers or special projects. Cuts: 5. Recommended for all students.

**MK 300**  
**Business Research and Survey Methods**  
**Lebby**

A 'How-to-do' course for marketing research in a scientific, quantitative manner. Concepts are emphasized, rather than formulas.

Test: 2, Weight on each: 30%, Type: short answer essay. One 10-20 page research project done by teams of five.

Recommended for Marketing Majors.

**OE 112**  
**Advance Shorthand Theory**  
**Mc Laughlin**

Further development of Touch shorthand theory, with emphasis on pretranscription training. Dictation is given at 60-80 WPM.

Tests: 2, Weight on each: equal, Type: dictation.

Recommended for students who have had OE 111

**OE 201**  
**Office Machines Lab I**  
**Pelkey**

Designed to develop working knowledge in the operation of adding-listing machines, printing calculators, and electronic calculators.

Tests: 3, Weight on each: equal, Type: problem solving. No papers or special projects.

Recommended for secretarial, office education, and teacher education majors.

**OE 122**  
**Advance Shorthand Theory**  
**O'Connell**

Further development of manual shorthand theory, with emphasis on pretranscription training. Dictation is given at 60-80 WPM.

Tests: 2, Type: dictation. Cuts: withheld until start of class.

**OE 122**  
**Advance Shorthand Theory**  
**Cote**

This course provides a further development of manual shorthand theory with emphasis on transcription; dictation is given at 60-80 WPM.

Tests: 2, Type: dictation. No papers or special projects.

Required of all students who have successfully completed OE 121

**OE 123**  
**Shorthand Theory Review**  
**Cote**

Intensive review of the principles of shorthand with emphasis on vocabulary and speed building.

Tests: 3, Weight on each: equal, Type: dictation. No papers or special projects.

**OE 124**  
**Beginning Dictation and Transcription**  
**Bernstein**

Pretranscription training, designed to develop accurate, rapid, and proficient transcribers Emphasis is on the mailable letter. Dictation level begins at 80 WPM, and the student progresses on the basis of his own ability.

Tests: 1. Cuts: withheld until start of class.

Recommended for all secretarial, office education and teacher education majors.

**THE ARCHWAY**  
**NEEDS**  
**YOU!**

**OE 124**  
**Beginning Dictation and Transcription**  
**Pelkey**

Pretranscription training, designed to develop accurate, rapid, and proficient transcribers. Emphasis is on the mailable letter. Dictation level begins at 80 WPM, and the student progresses on the basis of his own ability.

Recommended for secretarial, office education, and teacher education majors.

**OE 132**  
**Typing II**  
**Morrison**

For a course description, see catalog.

Tests: 3.

**OE 132**  
**Typing II**  
**Meek**

Minimum speed requirement of 40 WPM. Reinforcement of correct typewriting techniques to achieve speed and accuracy. Development of skill in the production of business letters and tabulated material and introduction of manuscript copy.

Tests: 3, Weight on each: 2/3 of final grade, Type: problem solving. Cuts: 10.

Recommended for secretarial majors.

**OE 201**  
**Office Machines Lab I**  
**O'Connell**

This course is designed to develop working knowledge in the operation of adding-listing machines, printing calculators, and electronic calculators.

Tests: 3, Weight on each: equal, Type: problems. Cuts: 4.

**OE 202**  
**Office Machines Lab II**  
**Bernstein**

Laboratory course to develop skill on transcribing equipment, word processing equipment, and liquid duplicator.

Tests: 3, Weight on each: 1/3, Type: production. No papers, in-class special projects. Cuts: withheld until start of class.

Recommended for all secretarial majors.

**OE 202**  
**Office Machines Lab II**  
**Lukowicz**

Lab course designed to develop skills in the operation of transcribing equipment and a recting typewriter; to develop ill in use and operation of liquid .uplicator and thermal process copier-transparency maker; also to establish familiarity with principles involved in operation of word processing equipment.

Type of tests: theory and problem application.

Recommended for secretarial majors.

**OE 202**  
**Machine Lab II**  
**Cote**

A laboratory course designed to develop skill in the operation of transcribing units, a liquid duplicator, and a copier. In addition, some familiarity with the principles of word processing will be developed.

Tests: 2, Type: performance and written. No papers or special projects. Cuts: withheld until start of class.

Required for all secretarial majors.

**OE 227**  
**Legal Terminology**  
**Mc Laughlin**

The purpose of the course is to develop a glossary of legal More course descriptions on page 10

## Musical Managers

cont. from page 11, col. 3

On August 20, after a fourth straight defeat at the hands of Washington a dispute between Berra and utility infielder Phil Linz.

On the team bus Linz began humming a few bars on his harmonica and Berra created a scene. He demanded Linz discontinue playing his musical instrument. A shouting match followed. When Berra returned to the front of the bus after he had said his peace, Frank Crosetti began yelling at Linz in defense of Berra.

Crosetti was a third base coach with the Yankees and had been an important part of great Yankee clubs of the 30's and 40's. Linz told Crosetti to stay out of it and the two sat down again in silence. Nobody said a word the rest of the bus trip. Crosetti said afterward, "It was the worst display in my time with the Yankees."

The Yanks proceeded to win at an amazing rate and overtook the Orioles and White Sox to win their fifth consecutive American League title. They lost the series to the St. Louis Cardinals in seven games however, and Berra was fired by Houk. Berra's failure to gain control had cost him his job.

Jonny Keane, the manager of the Cardinals was lured away from them by Houk to take over the Yanks. Berra was hired by the Mets as a coach. In 1965 the Yankees were picked to win the pennant again. But Keane showed less ability to handle the club than Berra. This along with costly injuries, caused the Yanks to slip to seventh.

Keane did not last ten games in 1966. Houk fired him and took over the managerial position himself. When the Yankees finished last that year, Topping signaled the end of the Yankee reign by selling the club to a group headed by CBS. Maris was traded to St. Louis, Tresh was gone to Detroit, Bouton was relegated to the bullpen, Ford retired, Bobby Richardson became ineffective, Cleve Boyer was traded to Atlanta, and Elsten Havard was shipped to the Red Sox.

AFTER ALL THIS\* THE Yankees found themselves at the bottom. It all happened too quickly. Dick Houser is now the man at the helm. Gene Michal is the G.M. History, will not repeat itself. Steinbrenner's money will not allow it. Isn't that right Frank Messer?

**PUT'EM AWAY**



**JUST FOR A DAY.**

If you can live without your cigarettes for one day, you might find you can live without them forever. So put 'em away. Just for a day. Thursday, November 15.

THE GREAT AMERICAN SMOKEOUT. American Cancer Society.

# riccootti's

Sandwich Shop

THANKS TO YOUR PATRONAGE, AGAIN THIS YEAR—

10% Discount to all Students with Bryant ID!

Effective the Entire School Year!

Sunday thru Thursday till 11 P.M.

Friday and Saturday till Midnight

Try our NEW: French Fries and Onion Rings



Located in the VILLAGE PLAZA

(375 Putnam Pk, Rt 44)

JUST TAKE RT. 295 SOUTH

TO GREENVILLE EXIT

ONLY 5 MINUTES FROM CAMPUS!



## Even More Descriptions

terminology and to develop proficiency in the handling of legal documents. Relationship of these items to law and law-office procedures is established.

Tests: 3, Weight on each: equal, Type: objective. Cuts: 4

Recommended for secretarial majors.

### OE 234 Typing IV Meek

Minimum speed requirement of 60 WPM. Emphasis is placed on the student's initiative and speed in solving problems relative to several specialized offices--technical, accounting, medical, legal, government, and executive. Skill in machine operation is emphasized.

Tests: 3, Weight on each: 2/3 of final grade, Type: Problem solving. Cuts: 10.

Recommended for Secretarial majors.

### OE 234 Typing IV Lukowicz

Emphasis is placed on student's

initiative and speed in solving problems relative to several specialized offices, i.e., technical, accounting, medical, legal, government, and executive. Skill in machine operation emphasized. Minimum speed requirement of 60 WPM.

Type of tests: skill application problems.

Recommended for secretarial majors.

### OE 234 Typing IV Morrison

For course description, see college catalog.

Tests: Production, 2/3 of final grade, speed 1/3 of final grade

### OE 326 Testimony and Conference Reporting O'Connell

The course provides the student with knowledge of courtroom procedures and practices and develops proficiency in jury charge dictation, courtroom testimony, and conference reporting at speeds

ranging from 160 to 225 WPM.

Type of tests: dictation. Cuts: withheld until start of class.

Only those students in the Department of Secretarial and Office Education who have been certified at 140 WPM and are machine shorthand writers are eligible for this course.

### PA 300 The Policy-Making Process Shapiro

Examination of how policy is made in U.S. through looking at process itself and at a number of specific policies.

Tests: 2 or 3, Weight on each: 1/4 or 1/3. Type: essay and short answer. Cuts: withheld until start of class.

Recommended for Public Administration Majors.

### PA380 Comparative Public Administration Camp

In this course we will look at the U.S. system of public Administration of Britain, France, West Germany and the USSR and East Germany.

Tests: 3, Weight on each: equal, Type: essay. One paper, internships available. Open cuts.

Recommended for anyone who has had one course in Public Administration or one course in social science such as SS 271.

### P150 General Psychology Yorks

This course provides an introduction to the understanding of human behavior. Growth, develop-

ment, learning, perception, motivation, the sensory basis of response, mental health, attitude formation, and personal adjustment will be considered.

Tests: 3, Weight on each: 1/3, objective. Optional report 8-12 pages. Cuts open or withheld until start of class.

Recommended for management, marketing LE. majors, and Teacher Education Majors. But it is important for all students.

### P250 Psychology of Personal and Social Adjustment Yorks

Designed to help the student develop an understanding of man and his behavior in relation to his physical and social environment, this course emphasizes a relatively new trend in psychology, namely, the psychology of the normal person.

Tests: 3, Weight on each: 1/3, Type: objective. term paper-10-15 pages. Cuts with held until start of class.

This course is valuable to all students at Bryant.

### Sc151 General Biology Boulet

Class meets one night a week for approximately three hours. Classes are split between lectures and labs. Lab grades count as 1/4 of the total final grade for the course.

Tests: 3, Weight on each 25%, Type: objective. Lab required. Cuts open.

Recommended for all majors.

### Sc161 Earth Science Boulet

Three hours of lecture a week.

Tests: 3, Weight on each: 1/3,

Type: objective. No papers or special projects. Cuts open.

Recommended for all.

### Sc251 Human anatomy Boulet

The Class meets twice a week for lecture and has a two hour lab each week Lab grade counts as 1/4 of you final total grade.

Tests: 3, Weight on each: 1/4. Type: Objective. Some lab homework or short project. Cuts open.

Recommended for all majors.

### Nutrition Sc 354 Boulet

Three hours of lecture a week.

Tests: 3, Weight on each: 1/3, Type: Objective. One three day menu is required. Cuts open.

Recommended for all.

### SM 102 Introduction to Computer Data Processing Massa

Five weeks of general computer information. Remainder of the course deals with the BASIC language and programming.

Tests: 5, Weight on each: 15%, Type: 3 multiple choice, 2 short answer, 4 graded labs and 6-8 lab assignments. Cuts: withheld until start of class.

Recommended for all students.

### SS252 History of the Modern World Estey

A lecture and discussion course which examines the major political, economic, social, and intellectual developments of world history since 1815. The significant events of

More course descriptions on page 12

Are you pregnant? Troubled?  
Get practical help, pregnancy  
testing. Services free and  
confidential. Call **Birthright  
Counseling** (collect) 467-4545,  
24 hours a day.

The Student Programming Board presents:

**CIBONA YUGOSLAVIAN  
BASKETBALL TEAM**

VS.

**THE BRYANT INDIANS**

on

**Tuesday, November 13, 1979**

at

**8 p.m.**

in

**Bryant Gymnasium**

**Tickets:**

**\$1 Student w/Bryant ID**

**\$2 General admission**

**COME SUPPORT OUR TEAM!**

Tickets will be sold at the door.



# SPORTS

## Lorraine Cournoyer Interview

### Game of Musical Managers Nothing New to Yanks

By Pete Baughman

The events and proceedings which have transpired in New York Yankee history over the past four years, have gained them more national attention than any other organization in the major leagues. Stretch runs for the pennant in September under the direction of managers which have come and gone four times in the last three years, have characterized the Yankee teams of the present. There has been a case of wealthy ballplayers, attempting to keep peace within an organization comprised of two competitors attempting to work together towards a common goal. The frequent managerial and general-managerial changes which have occurred over the last few years remind some of the last great Yankee dynasty during the early 1960's. This team was a direct descendant of the Yankee teams which won nine pennants in the ten years from 1949 on, under the guidance of Casey Stengel.

When Stengel won the pennant in 1960 he had a blend of players from the "old" Yanks of the 50's and the "new" Yanks which would carry the dynasty of the early 60's. Mickey Mantle was still the class of the team along with vets, Yogi Berra, Whitey Ford, and Hank Bauer. Bobby Richardson and Tony Kuback held together the DP. Cleve Boyer patrolled third base with as fine a glove as anyone has seen since Brooks Robinsons. Elsten Havard and Gil McDouald were in the outfield along with Mantle and Roger Maris. Maris was aquired before the beginning of the season from Kansas City and went on to smash 30 homers and drive in 100 runs to become the M.V.P. Tom Tresh, Joe Pepitone, Jim Bouton and Mel Stotlmyer all came a year or two later.

Following a tough seven game loss in the series to the Pittsburgh Pirates, Stengel was fired by the

Yankees. At a press conference the following afternoon, Stengel told newsmen, "The yankees have informed me that my services are no longer desired." Just like that, the Yankees had let go the man who had directed them to ten pennants and seven world championships in twelve years.

Ralph Houk was hired by the owner Dan Topping to replace Stengel, who at 70 did not fit into the new Yankee youth movement. Houk became the third manager in history to manage a world champion in his freshman season when the Yanks beat Cincinnati. After Houk had gone on to capture two more pennants in '62 and '63 with relative ease, he was named General Manager. Yogi Berra was rewarded for his 16 years of service behind the plate by being named to succeed Houk.

The events which transpired during the following two years are termed as difficult times. The Yankees under Berra played sluggish. It was said that there were attitude problems on the team, especially Bouton. Berra could exercise very little control over the team and lacked discipline over the club. By the end of August the

**Background:** Coach Lorraine Cournoyer is in her third year here at Bryant, serving as Women's Athletic Coordinator and varsity volleyball coach. Ms. Cournoyer received her Bachelor of Science from Florida Atlantic University, and her Masters from BU in education.

Besides volleyball, Lorraine has also coached tennis, softball, and basketball. Before coming to Bryant Lorraine was a teacher and coach at Warren High School in Warren Rhode Island. After one year at Warren under Coach Cournoyer, the girl's volleyball team made it to the states, and finished in seventh place overall. The next year, the team made it to the states again, and finished in sixth place. Here at Bryant, the women's volleyball team has had three consecutive winning seasons, this year finishing with an 18-2 record overall (undefeated in division III), and a berth in the state championships.

I asked Coach Cournoyer why she chose to coach at the college level. She replied "It's more of a challenge working with highly skilled athletes, and it enables me to learn more about the game." While talking about sports on the collegiate

Yanks were in third place behind Baltimore and the White Sox and were showing very little enthusiasm in their bid for a fifth consecutive pennant.

cont. on page 9, col. 2

### Bryant Varsity Bowling

The Bryant College Varsity Bowling Team is proving to be a top contender for the 1979-80 Tri-State Intercollegiate title. In their first tournament of the year Steve Pekuecne and Mike Fabian placed second in the doubles event with a combined total pinfall of 1088. This was the first the Bryant duo has bowled together and they are looking forward to an impressive season.

Last Saturday the team took first place honors in the Pioneer Valley Invitational held in Chicopee, MA. The team scored an outstanding total pinfall of 2802, averaging 186 per man. Their first game set an early season record of 1001 total pins, averaging 200 per bowler. The team victory was due to the cohesive team effort which Bryant displayed throughout the

day. Bryant's team spirit was second to none.

Mike Fabian had an outstanding day and won the all events crown scoring an impressive 1198 series, averaging 199 for 6 games. His team series of 651 included a high of 245. Mike's scores combined with others, such as Steve Pekuecne's 573 set and Mike Farrar's 559 set, helped the Bryant team pull together to defeat Central Conn. State College in the team event and Renssalaer Polytechnical Institute in the doubles event.

The team is looking forward to their third tournament of the season on Sunday, Nov. 11. Worcester Polytechnical Institute will be hosting the match at Auburn Lanes in Worcester, MA. All members of the Bryant community are invited and their continued support welcomed.

and the high school level, Lorraine noted that "women's sports have really grown and become more popular over the last few years." This is true not only for the women involved in the sport, but for the spectators as well. An example of this here at Bryant College, is the recent addition of women's soccer to the varsity schedule.

I asked Lorraine to evaluate the volleyball season to which she enthusiastically replied - "It was the best season in which I have coached, and also the best team I ever coached." Asking her why it was the best team she's coached, she cited the team's unity and motivation. "They help motivate one another; those who aren't on the court are cheering and involved just as much as those who are. The team has improved this season by learning advanced game strategies, becoming more constant, initiating each individual skill, and developing team confidence."

I asked Lorraine what the chances of the team were in Saturday's state championships. Lorraine responded by saying that "if the team is psyched and playing at their

potential, then I have the utmost confidence in their ability. And they know that." The Bryant women have as contenders for the title URI, PC, and Brown. When questioned about Brown (the team lost to Brown, a division I team, recently), Lorraine confidently stated Brown would be an almost certain victory since "they were playing way over their heads last time against us."

The team will be working several strategies in the states. The first change will be to employ the team's strongest blocker, Sandy Doucet, in the front line as often as possible. The second strategy will be to work fakes and tandems (faking a first hit at the net, with the second person coming from behind to spike the ball).

It was learned that the team missed making the regionals by one vote. There are 55 teams in region III, and according to Lorraine "It is an honor in itself to even be considered for the regionals (held in Pennsylvania each year) so it's not a great disappointment." Where do you see the team this time next year? "In Pennsylvania!"

### Men's Soccer

By Larry Wright

The men's soccer team ended their season last week with an impressive victory over Providence College. P.C., a division II team, has always given Bryant, a division III team, a good game but this game Bryant was able to come out the winner.

The game was a physical one in which P.C. lost its composure and received two yellow card warnings. There was no scoring done by either team in the first half while most of the play was at mid-field.

When play resumed in the second half each team started to penetrate into each others defensive areas. It was in this half that Bryant goalie Jeff Besse made many outstanding saves to preserve a shutout. The first Bryant score came when P.C.'s goalie fumbled and Mark Keilar was there to collect on the goal. The second Bryant goal came when Fred Messer received a lead pass from Lou Salva and deposited the ball into P.C.'s net to give Bryant the 2-0 win.

The team finished the season with a 5-8-1 record. The players should be congratulated for a fine season and their outstanding win over P.C.

### Women's Volleyball

The Bryant women's volleyball team ended the '79 season with an impressive 18-2 record, undefeated in division III. The latest victories came over the following teams: St. Anselm's 15-1, 15-4; Babson 15-7, 15-8; Eastern Connecticut 15-10, 15-11; Clark 15-9, 15-6; and Assumption 15-13, 15-12.

The only loss in the last six games came at the hands of Brown, who defeated Bryant 15-12, 15-9. Coach Lorraine Cournoyer felt that the Brown team was "extremely up for the game, while we weren't expecting them to be." She feels that when Bryant meets Brown in the State Tournament this Saturday, the women will be ready for them. Good luck, Bryant!

### HORDES OF CORDS.



Tons of them. Gap cords. Levi's cords. Cords in lots of colors and in every style and size. Student cords. Adult cords. Hordes of cords. That's the Gap. And, Gap cords are \$2.00 cheaper than Levis.



Lincoln Mall  
333-0130

### DELTA SIGMA PHI FRATERNITY DISCLAIMER

Delta Sigma Phi Fraternity, Denver, Colorado, hereby disclaims any organization on the campus of Bryant College, Smithfield, Rhode Island, operating as Delta Sigma Phi or an abbreviation thereof. Such organization is operating without authorization and in violation of trademark and copyright laws. Any person participating in this organization may be subject to legal action.

### HELIOS RESTAURANT

1423 HARTFORD AVE., JOHNSTON  
272-1155

HOME OF THE GREEK SALAD



THE NEWEST MOST EXCITING  
EATING-DRINKING & MEETING SPOT.  
IN JOHNSTON

Famous Greek Souvlaki

- MOUSAKA — SHISH-KEBOBS
- BAKED LAMB
- STEAKS-VEAL
- PASTAS-SEAFOOD

OPEN 7 DAYS 11 A.M. to 1 A.M.

GREEK AMERICAN CUISINE

10% off with college ID



## Finally the Last Descriptions

European history are emphasized as well as their impact on the rest of the world's peoples.

Tests: 3 Type: Short answer and essays.

**SS 251**  
**History of Western Civilization**  
Jolley

An introductory course in Western Civilization beginning in ancient history and completed in 1815. The

course is geared to stimulate the students' interest in the on-going development of political, economic, social, religious, cultural and intellectual changes in history. Major concentration begins with the Renaissance period.

Tests: 3, Weight on each: 1/3. Type: identification. No papers or projects. No cuts.  
Recommended for classification 3.

**SS261**  
**U.S. History to 1877**  
Litoff

A basic survey and introduction to the field of American history conveying the political, cultural, and economic development of the U.S. through Reconstruction. It attempts to provide an understanding of the foundation of the "American way of life."

Tests: 3, Weight on each: 25-40 1/2, Type: Essay and identification. No papers or special projects. Open cuts.  
Recommended for sophomore level and up.

**SS262**  
**U.S. History since 1877**  
Litoff

A history of the American experience from the end of Reconstruction to the present. The course will focus on the urban-industrial age, the rise of the U.S. to world leadership and the important changes that have occurred in the American way of life during the

past century.

Tests: 3, Weight on each: 25-40 1/2 Type: Essay-identification. No papers or special projects. Open cuts.

Recommended for sophomore level and up.

**SS 352**  
**Russian History**  
Estey

A lecture and discussion course which traces the development of Russia from its 9th century origins to the present with special emphasis on the nature of Soviet Communism. A persistent theme of the course will be to try to identify what it means to be a Russian.

Tests: 3, Type: Short answer questions and essay.

**SS 271**  
**Approches to politics**  
Camp

This course is a general introductory survey of politics for students without any previous work in the field. We look at three areas: political theory and their Consequences, approaches to political inquiry, and the different forms of

government around the world.

Tests: 3, Weight on Each: equal, Type: Essay and short answer. Optional Minipapers. Open cuts.

Recommended for anyone who has not had a previous course in political science and would like a beginning course for liberal arts credit or is just plain interested.

**SS271**  
**Approches to Politics**  
Shapiro

Study of major concepts, theories and practices of politics--both in U.S. and Elsewhere.

Tests: 3, Weight on each: Essay and short answer. No papers or special projects. Open cuts.

**SS461**  
**History of Contemporary America**  
Litoff

This course will examine the major forces and events which have shaped American history since 1945.

Tests: 2, Weight on each: 20-35 1/2, Type: Essay-identification. Two papers, no special projects. Open Cuts.

This is an advanced level history course recommended for juniors and seniors Prerequisite is SS 262.

**H452**  
**Western Philosophy**  
Estey

An advanced philosophy course in which the ideas of five or six of the great philosophers of the Western tradition are intensively studied. Included are Plato, Aristotle, Aquinas, Descartes, Nietzsche, and Sartre. Primarily a discussion course. Not open to students who have not completed Introduction to Philosophy.

Tests: 2, Type: essay. Two papers based on required readings.

### WOMEN'S MEDICAL CENTER

## ABORTION SERVICES



#### FREE PREGNANCY TESTING

- \*ABORTION PROCEDURES
- \*BIRTH CONTROL COUNSELING
- \*COMPLETE GYNECOLOGICAL CARE

IMMEDIATE APPOINTMENT  
AVAILABLE

CALL: 272-1440

100 Highland Ave.—Suite 104  
Providence, Rhode Island 02906

HOURS: 9-9 Mon. thru Fri., 9-5 Sat.

### MEN'S DISCUSSION GROUP

1ST MEETING  
NOVEMBER 13 AT 3:30 P.M.

SIGN UP NOW IN THE COUNSELING CENTER.

# SUB KING

#### SANDWICHES:

- SUPER ITALIAN (Ham, Bologna, Genoa, Pepporoni)
- SPICY ITALIAM (Genoa, Pepperoni)
- COLD CUT COMBO (Ham, Bologna, Genoa)
- ROAST BEEF
- PASTRAMI
- HAM
- TURKEY
- CHICKEN SALAD
- TUNA
- LOBSTER (Langostino)
- SAUSAGE
- MEATBALL
- ...AND MORE!

Also, now serving Delicious, Home-made PIZZA with Cheese, Pepperoni, Onions and Peppers.

## OPEN LATE

Sun.—Thurs. 'till 1 a.m.  
Fri. and Sat 'till 3 a.m.

1500 Place  
1500 Atwood Ave.  
Johnston, RI  
861-5108

Rt. 295 south  
Rt. 6  
Left at Atwood Ave.

# \$1

## OFF LARGE PIZZA

With this coupon