

Senate Committee Plans Gala Formal; Free Tickets Available in Administration Building

Annual Yule Ball at Biltmore on Dec. 3

By ALLAN HILLIS

Another twelve pages of the calendar have been turned, and Christmas is almost here again. The Christmas season brings with it much merry-making and celebrating, a time of the year when family and friends unite in the spirit of the holidays. In keeping with this spirit, the Student Senate proudly announces its famed Annual All College Christmas Formal.

On December 3, 1954, a new setting will be the background for the All College Christmas Formal. We have been fortunate in securing the beautiful Sheraton-Biltmore Hotel Ballroom. The dance will be formal, but NON-FLORAL. For your dancing and listening pleasure will be Tommy Masso and his orchestra, playing from 8:30 P.M. to 1:00 A.M. The decorations in the ballroom will be done by the Campus Florist of Providence. With such splendid arrangements, it promises to be the best Christmas Formal ever held.

The only thing that is needed to make the Christmas Formal complete is you. This dance is designed by the Student Senate especially for all Bryant College students. Veterans and their wives, day students and their dates, and dorm students and their dates. The ballroom is large enough to accommodate the entire student body. The best thing about the Christmas

Formal is that it doesn't cost a thing to attend. Tickets will be given to Bryant College students. You will be able to pick up your tickets at the Receptionist's Desk in the Administration Building after the Thanksgiving vacation.

Don't be left out of all the fun. Come to the Annual All College Christmas Formal. When? December 3, 1954. Where? Sheraton-Biltmore Hotel Ballroom. How much? Not a penny. Who? All Bryant College students and guests. Why? Because it is the best dance of the year, and you will have a very enjoyable evening.

The Christmas Formal Committee with Audrey Perreault, Chairman, Allen Hillis, Rosemary O'Neil, Duane Lighthall, and all the Student Senators invite all students to the Annual All College Christmas Formal. See you there.

History of Bryant -- Part II

By ANN HAVENS

Part I and Part II of the history of Bryant have been, so to speak, bare facts containing a great many dates, names, and figures. In the next issue I hope to cover such subjects as campus activities and organizations through the years.

During the period from 1900 to 1915 the college continued to grow both in prestige and in the number of students enrolled. The school was located in the old Hoppin-Homestead Building on Weybosset Street across from the Providence Public Market. By this time the college was being admired for its fine work by the businessmen of the territory. As a result, the majority of the students enrolled were from prominent families who desired that their children obtain a good education in business management.

In 1915, Mr. T. Stowell who had been proprietor and principal since 1878, disposed of his interest in the school. Mr. Henry L. Jacobs, the owner of the Rhode Island Commercial School, bought Mr. Stowell's share in what had been Bryant and Stratton, thus combining the two schools and giving the new school the name of Bryant Stratton-Rhode Island Commercial School.

Soon after the combining of the schools, it was moved from the Hoppin-Homestead Building to the Butler Exchange Building.

It was during the year of 1916 that, under an act of the State Legislature of Rhode Island, the school was first permitted to award Bachelor and Masters' degrees. At that time the two-year courses were created. The number of students attending classes was limited for the first few years and very few degrees were granted.

By 1921 more and more students

Religious Counselors Dine With Students

On Monday, November 15, the clergy representing the four religious groups on campus had dinner with the men students. They extended an invitation to the students to come and see them at anytime, regardless of faith.

The counselors had apparently been looking at some joke books before coming. Father Geoghegan told of a priest who was asked why

were attending classes, and many different sections of the country were represented. As enrollment increased, the Butler Exchange Building seemed to grow smaller. In 1927 the school moved to 40 Fountain Street, and the name was changed to Bryant College.

Again in 1935 the college changed locations. This time it moved to the area adjacent to Hope Street and Young Orchard Avenue. The first buildings were South Hall, the Auditorium, Alumni Hall, and the Placement Building. During the first year in the new location there was one dorm for young women, Bryant Hall, which was located on campus, and three off-campus dorms for young men.

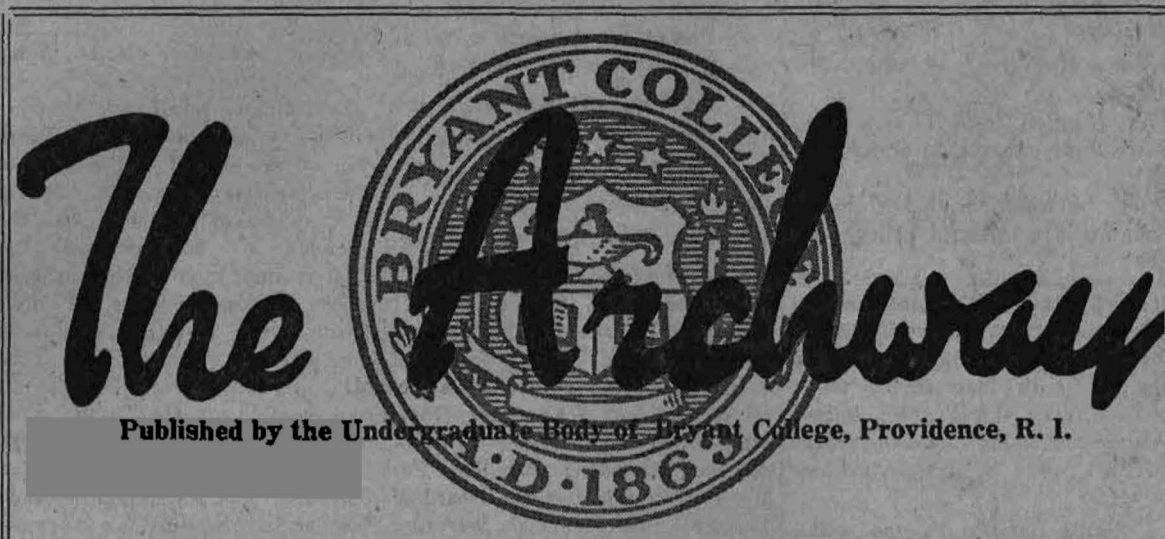
The four-year teacher-training program was introduced in 1942. The State of Rhode Island appropriated \$15,000 for teacher-trainee scholarships, available to residents of the State of Rhode Island.

The student body, which previous to 1935 numbered about 350 to 400, has increased steadily through the years to the present enrollment of 1250 students, and 450 Evening Students. Through the years the buildings have increased in number also. Today there are six dormitories for young women, five dormitories for young men, the Barn Studio, and the field house at the athletic field, in addition to the other classroom buildings.

History

(Continued on Page 2)

his face was cut. He replied that he had been concentrating on his sermon and thus cut his face. One of his flock remarked that he should have cut the sermon and shaved his face. Rabbi Rosen said that the best things to remember when speaking are the three B's—be sincere, be brief, and BE SEATED. The occasion became so friendly that Reverend Hirtle found himself addressing Dean Wilbur as Rabbi Wilbur.



Published by the Undergraduate Body of Bryant College, Providence, R. I.

Vol. XIV, No. 5

November 30, 1954

Campus Calendar

December 1	— Movie — "Red-ball Express"
December 1	— Christmas Formal Sheraton - Biltmore Hotel
Dec. 6-7-8	— Hell Week
Dec. 8	— Movie — "Take Me to Town"
Dec. 11	— Sigma Lambda Pi Snow Queen Dance

Another Hit for Bryant Masquers

Last week "mother" graduated from the freshman class into the arms of a handsome young professor as 600 people watched the Masquers present "Mother Is a Freshman."

As the mother, Pat Gusewicz played with her usual professional poise. Jim Bryson, as the professor, was his usual dramatic self, while Allan Hillis kept the audience in stitches with his perfect characterization of the dean.

Susan, played by Gladys Kionoian, kept the audience entertained all night as she tried to break up her widowed mother's love affair with the professor.

Others in the play who all did a wonderful job were Marjorie Rankin, Joan Todd, Connie Masso, Ann Galski, Lonnie Modica, Martha Petracca, Bob Reynolds, Ed Betros, Jim Handy, Allen Hillis, and Fred Gafner.

Glee Club Activities For December

During the month of December, the Barn will be filled with the music of the Glee Club preparing for their many activities.

On December 2, the Bryant Barnstormers will entertain the Public Relations Directors of the Eastern Colleges at their annual convention at the Sheraton-Biltmore Hotel.

On December 7 the WJARTV audience will see a group from the Glee Club on "Breakfast at the Sheraton" from the Biltmore.

The entire Glee Club will sing at the Alumni Ball on Friday, December 10, at Rhodes-on-the-Pawtuxet.

Just before the Christmas holiday starts, the Glee Club will present the candlelighting service. This very solemn occasion will round out a very full month for the Glee Club

New Rules and Regulations To Govern Bryant Dances

The matter of the way the Saturday night dances are held in the Bryant College Auditorium has been under discussion by members of the Administration, Faculty, and the Board of Trustees on several occasions.

At the last meeting of the Board of Trustees this matter was once more brought up due to the fact that many complaints are received from the neighbors, and the dances are in reality public dances and not private affairs for the members of the Bryant College student body.

When the Saturday night dances in the Auditorium were started, the number of people admitted was limited strictly to members of the student body and their friends. They were not public dances held for profit. They were dances held to bring together members of the student body for social purposes.

It has been decided that the dances to be held in the Auditorium in the future shall adhere to the following rules and regulations if the sponsoring organizations wish to use the Auditorium.

1. The number of people to attend a Saturday night dance will be limited to 200 couples.
2. All those who attend these dances must be in proper dress. No dungarees or sweatshirts will be permitted.
3. No tickets can be sold at the door. Tickets can be sold to friends of the students previous to the time when the dance will be held; but, to be admitted, students must show identification cards and bring their friends with them.

4. It is suggested that the Auditorium be decorated to give the dances a more informal appearance.

5. A social committee must be appointed by the organization sponsoring the dance, and the members of this committee should be at the door to welcome their guests.

6. Suitable provisions must be made for chaperons.

7. No dances will be permitted to operate after 12:00 midnight.

8. A policeman must be in attendance at each dance.

9. A license must be secured from the Providence Police Department giving the organization the right to hold the dance.

10. The sponsoring organization must submit their application to hold the dance to the proper authorities for approval at least two weeks in advance of the dance.

11. The Administration shall pay for and have in attendance at each Saturday night dance a representative to pass on those to be admitted to the dance.

12. We must discontinue comments among the neighborhood and among the student body that Saturday night dances at Bryant are held at the SNAKE, PIT and COUTÉ Park.



MISUNDERSTANDING?

Professor Jim Bryson pleads with Dean Allan Hillis not to expel "Mother" Pat Gusewicz from college. Susan, played by Gladys Kionoian, disconsolate over her mother's situation, is comforted by her boy friend Bobo, played by Bob Reynolds.

Thanksgiving Dinner Party for Dorm Students in Gym

On November 22 approximately three hundred students filed into the gym and sat down to Bryant's annual Thanksgiving dinner for dormitory students.

All tables were covered with white cloths and candles highlighted the centerpiece of cornucopias, fruit and pumpkins. The gym was decorated in blue and silver, a contribution from the Sigma Iota Beta sorority.

Members of the Administration and faculty sat at the head table, and a special table was reserved for dormitory housemothers.

After dessert had been served President Jacobs made a brief speech. Mrs. Jacobs then read a

poem, "Then and Now" which she had written for the occasion.

A short concert by members of the Glee Club, under the direction of Mrs. Appleby, followed. Songs from the recent Pops Concert were sung by the group.

The Bryant Stardusters, under the leadership of Professor Handy, then played for dancing. Among the selections were "Skokian," "In The Mood," and "Tenderly." Dancing ended shortly after ten o'clock, when the band played their theme, "Stardust."

All students who were present expressed the desire that the Thanksgiving dinner would remain a Bryant custom.

Then and Now

The first Thanksgiving Story,
Is an oft-told tale
About the Pilgrims dining,
On wild goose and quail.
They may have had cranberries,
From old Cape Cod,
And their very own vegetables,
Fresh from the sod.

They did not serve liquor,
Not that was bad.
For they were a people
Grave and sad.

They dressed in costumes,
Plain and coarse,
And drew their strength,
From God, as their source.

They controlled their appetites,
So as not to shirk,
And were always ready
For the next day's work.

They worked hard—
They prayed and suffered, too.
But always did,
What they had to do.

From their little homes,
They dared not stray,
For fierce, red Indians
Prowled around that way.

They had character and courage,
But did not boast
Their fiber was like that
Of their rock-bound coast.

Thanksgiving, as you can see,
Is a much different day, for
you and me.
The "abundant life" of '54,
Is a far cry from days of yore.

At home—hotel or public café,
We'll have a lively and joyous
day.

To a football game, or a theatre
first,
Before we go to quench our
thirst.

We'll step on the gas,
In our Plymouth or Ford,
And speed like mad,
Around town or abroad.

We'll be in dress-up clothes,
Or Bermuda shorts
For some of us, truly,
Like to look like sports.

Our turkeys will come,
From the corner store,
Vegetables, pies, sweets,
Jellies and other foods galore.

We hope you'll find time,
To offer up thanks,
And not make it entirely,
A day of pranks.

Spend it so well,
This day of elation,
You'll be ready for work
Right after vacation.

JEANNETTE C. JACOBS
(Mrs. HENRY L. JACOBS)

Frat Pledges Eagerly Await "Hell Week" Antics???

Sneak Preview of What is In Store for Pledges

By JOAN TODD

Alpha, Beta, Gamma, Delta—I know the Greek alphabet—but do you pledges?

Ah, yes, and how are all "our" fine pledges today? In tip-top shape, I trust. Better be—because we have an eye to the future—and here comes HELL WEEK!

You might start preparing yourself for some rough sledding—but at the same time, prepare yourself for a wonderful college experience in the very, very near future.

Let's take a look at some of the Greek Letter organizations and see what capers you will be the victims of.

Alpha Phi Kappa promises a variety of dress to their pledges. A switch from dungarees to "dress up" is on their agenda, I believe, and—I heard they would add to the brotherhood-sisterhood idea by wearing berets similar to Kappa Tau's. Should be a tricky little outfit. K. T., of course, with their traditional berets and appropriate dress are bound to look pretty sharp.

What's this—do I detect a swish of green and yellow? Well, if it isn't a Phi Sig pledgee, decked out to kill with those green berets, bows, and signs, and that final touch—a real, flashy Phi Sig paddle. Pretty nifty. Their sister sorority is "cutting a rug" so we see with their SIC signs. Purple and yellow, Sigma's colors, are to be carried out in a very effective theme, from head to toe, from yellow bow to purple socks and back again. Real cool, girls.

Beta Sigma Chi, adhering to their "no hazing on campus" policy will, however, add a dash of color to the scene with blue ribbons to be worn by their pledges stating "Pledging Beta Sigma Chi." Their sisters, Sigma Lambda Theta will be decked out in red skirts, white blouses, red ties, and real crazy white bands with the sorority letters brilliantly displayed.

Tau Epsilon will really add to the scene. Could be just a rumor but I hear they'll favor rolled-up pant legs, bows around the neck, tams, and makeup brilliantly displayed. K.D.K. will be wearing white blouses, green skirts, also something "extremely" different. I understand they'll be dressed symbolic of a couple of well-known professions. Watch these gals—their outfits should really be something.

Chi Gamma offers a bit of variety to the traditional spectacle. You'll see them in sports clothes or suits,

dressed to kill, with those fabulous canes, tophats, and ties really adding that final touch to their outfits. Phi Upsilon, with long-sleeved white blouses, gray skirts, green berets, gray ties, matching socks, and pledge pins, are bound to "do their brothers proud."

Sigma Lambda Pi, too, will be dressed to kill, from all reports, which predict white carnations, and blue cards bearing the fraternity Greek letters. Their sisters, Beta Sigma Gamma will also carry out the dungarees-one-day-dressup-the-next theme. They'll be wearing big blue bows, too. Should look pretty snazzy.

Alpha Theta Chi will really add to the color and gaiety of Hell Week. They're scheduled to wear yellow bow ties and I believe, yellow arm bands. With this added dash of color, Hell Week promises to be fabulous.

S.I.B. will be wearing those real gone white blouses with big blue polka dots. I believe they'll be carrying out their dress-up theme one day, also. B. I. B.? I predict they'll be wearing those cute Bibs, symbolic of their fraternity hazing.

Not to be forgotten is the "Hell Week" theme—when pledges will work in various places throughout the community. It should be a very worthwhile feature of Hell-Help Week.

And to you pledges—I dedicate this article. You've chosen the fraternity and sorority of your choice. Now support it and learn the true meaning of brotherhood and sisterhood. You will be expected to carry on the traditions of the Greek Letter organization to which you are now pledged. It's a big job, but we have shown our confidence in you by choosing you to represent our sororities and fraternities—and to represent US.

So—here is another Hell-Help Week. HAVE FUN!

Bryant Alumni in Politics

Now that the discussion of the election results has died down, let's take a look at the part that the alumni of Bryant played in the campaign.

Re-elected for a fourth term as General Treasurer for Rhode Island was Ray Hawksley who graduated from Bryant in 1929. Mr. Hawksley was one of the top students in his class and is now a very active member of the Bryant Alumni Council. He was associated with the Providence Institution for Savings for twenty years following his graduation. In World War II he served in the U. S. Navy in the Pacific. He is President of the East Providence Boys' Club, Deputy Chief of the East Providence Auxiliary Police, and President of the Board of Trustees and Financial Secretary of the East Providence Methodist Church. Treasurer of East Providence from 1946 to 1948, Mr.

Hawksley was first elected to his present office in 1948.

Four alumni from Pawtucket were candidates for office. Roger Beauchemin was elected to the office of State Representative. A member of the class of '47, he is also the President of the Pawtucket Bar Association. John Kane, a member of the National Society of Public Accountants, was a Republican candidate for State Senator. John McDevitt ran for the office of State Representative. He is the plant manager and secretary of the Blackstone Glazed Paper Company. Earl Sylvander was a Republican candidate for State Senator. He has represented the twenty-fifth district of Providence in the General Assembly for the past four years.

Bryant's View Continues

The second program of the instructive series of talks by members of the Bryant College Faculty was a short informative discussion on "The Retail Revolution" by James M. Keniston, assistant professor of retailing, salesmanship, and marketing. He showed, in his talk, how the population trend has moved out of the city into the outskirts and how the large stores have started branch stores to combat this loss of customers who no longer want to travel to the city for their everyday shopping.

Dean Gulski, head of the accounting and finance department of Bryant College, spoke on "Stop, Look, and Listen—You'll be Surprised" for the third broadcast of the current series. In his talk, he spoke of how the stress and strain of modern life may be alleviated with some leisure activities.

He brought out in his talk that while we do not have time for most sports or hobbies, we do have time to stop and look at the wonders of nature. He said, "Very well—you may say—but I don't know anything about the birds or the stars or the trees. That's just fine. Neither did I—and as a matter of fact I know very little about them now. The fun comes in the learning, and I assure you that you will be a long time exhausting the material."

He spoke on the joys of learning of the different types of trees and of the enjoyment that he and the others who have taken up this phase of nature hunting have received from it. He talked for a short time on the rocks and birds that may be found around the Bryant Campus.

On November 26, Mary T. Appleby will present the Bryant Glee Club and the Stardusters in another edition of the well liked "Pops Concert." This concert will feature many of the fine tunes that were first heard on November 3 at the Bryant Auditorium. This will be a program to be heard and enjoyed by all those who live in Rhode Island. It is an excellent way to wind up a glorious Thanksgiving day.

History

(Continued from Page 1)

and the Field House at the athletic field, in addition to the classroom buildings.

Since the school was first founded by Messrs. Bryant and Stratton, it has been the aim of the administration to provide the best in faculty and facilities to offer young men and women a good foundation for the ever-increasing opportunities of the business world.

Phi Sig Winner of Turkey Trot Trophy

On Saturday evening, November 13, Kappa Tau held its annual Turkey Trot. This year, as in the past, the main attraction was the dancing contest. The judges, Russ Emery, the local television star, Miss Eva Clemens and Miss Margaret Moley, two of the attractive dancing instructors at Arthur Murray's Studio here in Providence, had a difficult time deciding the winner.

The fraternities represented, competing in the fox trot, waltz, rumba, and jitterbug, were Sigma Lambda Pi, Tau Epsilon, Beta Iota Beta, Alpha Theta Chi and Phi Sigma Nu.

Phi Sigma Nu, represented by Sam Galarneau and M. Perrine, won first place in the fox trot contest. Phi Sigma Nu, this time with Bob

Sansariq and Sheila Selnow, also took first place in the rumba contest. Ernie Mendillo and B. Safa, representing Alpha Theta Chi, were judged the best waltzers. Sigma Lambda Pi, represented by Dave Strasser and Pat Luellen, who danced for over fifteen minutes, won the jitterbug contest.

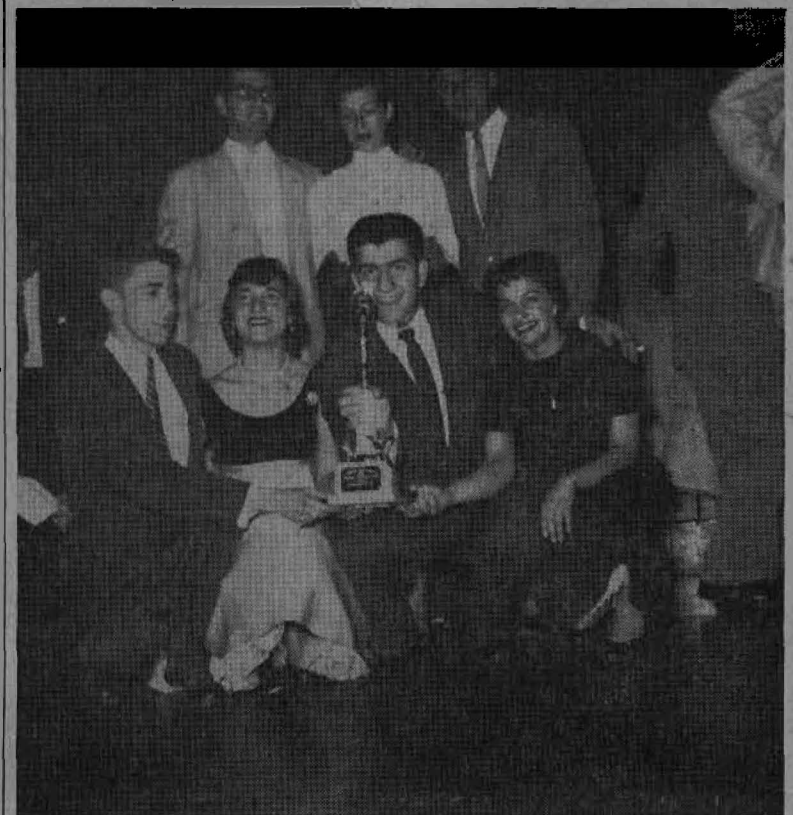
The final score using the basis of ten points for first place, five points for second place, and three points for third place was:

First Place with 28 points: Phi Sigma Nu.

Second Place with 18 points: Alpha Theta Chi.

Third Place with 13 points: Sigma Lambda Pi.

Chuck Jourdenais, Kappa Tau's president, presented a large trophy to the captain of Phi Sigma Nu's dancing team. Dancing continued until midnight to the music of Tommy Vale.



Arthur Murray Dancing Instructor Candidates—Kneeling, left to right: Sam Galarneau, Marie Perrino, Ed Betros, Gladys Kinoian. Standing: Edward Ocando, Sheila Selnow, and Robert Sansariq—proudly display Turkey Trot trophy.

The Inquiring Twosome

By IRENE and MARSHA

Oh, Hi! Next week will be Hell Week, and just about everyone—upperclassmen and pledges—will be looking forward to this week. As we asked the question of the hour, the prospective pledges thought we were putting them on the spot, but we didn't; and we would like to take this opportunity to thank all who have co-operated with us. Here goes the question of the hour.

- What do you anticipate during Hell Week?**
- Eleanor Sorreson**, Edgewood, R. I. I'm looking forward to a great week of memories in my college years.
 - Bill Byrden**, St. John, N. B., Canada. I am looking forward to a good time. I have also been informed that the girls of a certain sorority are out to get me during Hell Week.
 - Nancy White**, Milford, Conn. Everything for me will come as a big surprise.
 - Nancy Brunetti**, Bridgeport, Conn. I expect to see a bunch of really gone characters around this campus.
 - Janice Kaplan**, Providence, R. I. Everything that was done to the other kids plus their own imagination.
 - Sandy Zuckerbrat**, Forest Hills, New York. I expect a lot of hard work, but I feel that I'll enjoy it and always remember it.
 - Bill Dean**, Providence, R. I. I'm looking forward to it, especially the ride—that should be quite an experience.
 - Howie Chayt**, Brooklyn, N. Y. Hell.
 - Marilyn Maggiacomo**, Providence, R. I. I'm afraid to think about it, but I think it will be a lot of fun, if you are a good sport.
 - Kathy Wajtusiak**, Adams, Mass. A lot of people have given me a definition of heaven, but I don't think it'll be anything like that.
 - Kenny Salk**, Providence, R. I. Let come what may, I expect the worst, but I'll hope for the best. I just hope that I get into the frat of my choice.
 - Paula Mojkowski**, Pawtucket, R. I. It should be a lot of fun, since I know most of my future sisters.

Yes! we carry JOKARI

the new Sports Game for All the Family, like Tennis ... like Handball yet needs no court facilities!

as advertised in the SATURDAY EVENING POST

● READY TO PLAY ANYWHERE—INDOORS OR OUTDOORS
● COMPACT—EASILY CARRIED IN ONE HAND
● CAN BE PLAYED BY ONE, TWO OR MORE

PAULINE BETZ, famous American Tennis Champion says: "There's no Sports Game like JOKARI for sheer fun and healthy exercise. Costs so little, too!"

Consists of 2 paddles and a ball connected with a rubber cable to a central control box.

Come see JOKARI in Your Favorite Model:

JUNIOR SET in smart green enamel finish... \$3.95
PAULINE BETZ SET in gleaming copper-enamel finish... \$5.95
OFFICIAL SET, heavy construction in natural wood finish... \$7.49

See "JOKARI" today at:

The Archway

Editorial and Business Offices, Gardner Hall, Bryant College, Young Orchard Avenue, Providence, R. I. Telephone GASpee 1-3643

Member Intercollegiate Press Member Associated Collegiate Press

Editor-in-Chief.....Jerry Balemian
Managing Editor.....Joe Ruggieri
Assistant Editors...Elsie Schaich and Rosemary O'Neil
Feature Editor.....Joan Todd
Sports Editor.....Ed Betros
Business Manager.....Don Blackburn
Advertising Manager.....Joe Crowley
Circulation Manager.....Paul Nelson

Feature Department: Joan Todd, Joe Ruggieri, Ann Havens, Sam Galarneau, Gladys Kinoian, Vyra Imondi, Marsha Gluckman, Irene Armao.

General Staff: Barbara Chernak, Corrine Campanella, Alice Nemergut, Aaron Hirsh, Thomas Graham, Maurice Lariviere, Peggy Hoben, Yolandi Calitri, Hugh Dunlap, Warren Elger, Bobby Faulkner, John Buckelew, Chester Norer, Jim Bryson, Roger Martindale, Ronald Wood.

Typists: Shirley Barone, Barbara Lowe.
Photographers: Bob Smithson, William McDermott, Lee Nichols.
Cartoonist: Tom McMann.
Advertising Staff: Irene Rutana, Dick Whelan, Don O'Neil.
Circulation Department: Bernie Sherwill, Gene Protzko, Skip Williams.
Sports Department: Anne Moore, Carol Kahn, Chuck Jourdenais.

Fox Point Launderette

106 IVES STREET PROVIDENCE, R. I.
MA. 1-3054

Laundering, Shirt Service, Dry Cleaning
Priced for the Student Budget
PICK UP AND DELIVERY

arthur palmer jr. inc.

sporting goods and sportswear

218 thayer street, providence, r. i. gaspee 1-0947

Editorial

Cribbing and You

There are several reasons why doing one's own work in college is better than copying someone else's work.

Probably the most important reason is that college is intended to be a source of education. "Trial and error" is one of the best methods of learning, but no benefit comes from copying the work of others.

Honesty is a virtue to be cultivated now so that it will be second-nature throughout life. Copying the work of others and submitting it to the instructor as original is dishonest. Such practice, to insure good marks, not only gives an artificial class standing; but also adversely affects the standing of the honest student who does his own work, but who may not be as bright as the person whose work was copied. If one depends on others for help in passing in college, he will be unable to do his own work when he is out in business.

Another even more basic reason for doing one's own work is that homework and tests are the only ways by which an instructor can determine whether or not he has presented his material in an understandable manner. Instructors usually are very much interested in the subjects they teach and in their success in presenting those subjects. If students ask few questions and if they complete the tests and the homework in good form, they give the instructor reason to believe that he has presented the material in an understandable manner.

Several reasons why a student should do his own work in college are, therefore, (1) that his primary objective in coming to college was to acquire an education, (2) that he is the real loser when he copies someone else's work, and (3) that copying is dishonest.

THOMAS R. GRAHAM

A Progressive-Backwards Party

Have you ever been to a Progressive-Backwards Party? If you haven't you're missing a good time.

On Thursday, November 11, the Brothers of Kappa Tau and the sisters of Alpha Phi Kappa celebrated the holiday by having a joint progressive-backwards party. Everyone had to wear some article of clothing backwards. The boys wore their shirts backwards which provoked the beginning of the laughter that prevailed throughout the afternoon and evening. The first stop for the convoy of seven cars was the home of Barbie Lowe, the president of Alpha Phi Kappa, where the brothers and sisters had dessert and

played charades. The next stop was the home of Mr. and Mrs. Charles Burke, advisors to Kappa Tau and Alpha Phi Kappa, where the main course of sandwiches and punch was served. After singing and enjoying a piece of Don Patterson's birthday cake, the party moved on to Gerry Sadler's home for dancing and games. Chuck Jourdenais and Florence Papas cut a rug on a very small chair, and Gerry Sadler and Don Patterson did the highland fling.

Co-ed of the Week



ANN HAVENS

This week's Co-ed is energetic Ann Havens of Lancaster, New York.

Ann entered Bryant in September 1953, after graduating from Lancaster High School. If you can't find Ann around campus, you will probably find her running down stories for the ARCHWAY, making appointments for the Ledger, taking the minutes of the International Relations Club, attending a B. A. & A. speaker meeting, or recording the history for Sigma Iota Chi sorority, not to mention modeling for the school publications. In her spare time Ann can be seen at most of the sporting events rooting for her sorority or brother fraternity.

Star Dusters to Appear on T.V.

On Monday, December 6, the Star Dusters directed by Professor Ralph Handy will appear on television, station WJAR, sometime between the hours of 9 and 10. They have to be at the Sheraton-Biltmore Hotel for a brief rehearsal before the show.

On Tuesday, December 7, the Bryant Glee Club, directed by Professor Appleby, will appear at the same hour that the Star Dusters will on Monday night. Since the size of the screen is small, the whole glee club can not be shown and so one of the specialty groups will represent the glee club.

The television appearances are for the purpose of publicizing the coming Alumni Ball on Friday, December 10, at which the glee club and the Bryant orchestra will be featured.

Community Chest Drive Results

At the recent Community Chest drive on campus, the students and faculty of Bryant contributed a total of \$427.86 to the very worthy cause.

The committee of Duane Light-hall, Don Hillis, Mary Harrington, Bert Duffy, and Ed Vybiral handled the collection from the students.

Although Ann is a member of quite a few organizations, she is not one to sit back and let other people do all the work. She pitches right in and does her share, if not more.

CAMPUS CAPERS

By VYRA MONDI and ELEANOR FALLON



SIGMA IOTA BETA: The sisters of Sigma Iota Beta presented a very successful dance last Saturday night in the gym called "Under Paris Skies". The decorations were so beautiful that Mr. Falcione asked the girls if they would leave them up for the dorm supper. So all you dorm students now know that it was the SIB girls' ingenious efforts for their dance that helped to make the dorm supper so enjoyable. Credit goes to Peggy Hoben, Annette Sargis, and Carol Kahn and their helpers for this job well done. SIB's pledges received their instructions this week, on Tuesday afternoon, from Pledgemistress Eleanor Fallon. Hell Week and Sno' Queen Campaign Week are almost upon us. Luck to you, sister Matzie!

PHI SIGMA NU: This week the brothers are happy to announce that Phi Sig won both the dancing trophy and the Blood Drive Trophy. The winners of the Fox Trot were Sam Galarneau and Marie Perrino. The Rhumba winners were Shelia Selanow and Robert Sansaricq, and Ed Ocano placed second in the Waltz contest and Ed Betros third in the Jitterbug. Congratulations to all the other contestants. The Blood Drive was won by Phi Sig followed closely by Kappa Tau. The brothers are looking forward to Hell Week. Look out, Pledges! That's all for now from Phi Sigma Nu.

PHI UPSILON: The alumni banquet is going to be held at the Admiral Inn, November 30, 1954. The newly elected officers will be installed at this time. At the last meeting a chaplain was elected. Congratulations to Mary Hoddle. She'll make a splendid chaplain. A tea was held in honor of the prospective pledges at Miss Gamble's apartment. All the sisters would like to thank Miss Gamble for her wonderful dance exhibition! Plans are being made to give the orphans a Christmas party. Which one of our brothers is going to play Santa! By the way, Mr. H., don't you like creampuffs??

THE BROTHERS OF BETA SIGMA CHI had a joint party with their sisters of Sigma Lambda Theta recently and everyone had a wonderful time—pledges too. Plans are being completed for Beta's

Campus Capers
(Continued on Page 4)

For Your

FORMAL For Hire

NEW WALDORF

'TUX'

- SINGLE BREASTED
- FORMAL BLUE
- SHAWL COLLAR
- FEATHERWEIGHT

WALDORF

TUXEDO CO.

212 UNION STREET

Corner Weybosset



Film's Diana Lynn: "I think the Miracle Tip is the most modern filter... and L&M the best-tasting filter cigarette."



David Wayne, Stage & Screen: "L&Ms have the best filter of them all. Miracle Tip is right! There's nothing like it."



Mrs. Laddie Sanford, Socialite Sportswoman: "I love L&Ms. Wonderful filter—exceptional taste!"

No filter compares with

L&M'S MIRACLE TIP

for Quality or Effectiveness

Isn't it time you tried the cigarette that is sweeping the country... breaking record after record... winning more smokers in less time than any cigarette ever did! Why such success for L&M? It's the filter that counts, and L&M has the best. You get much more flavor, much less nicotine... a light and mild smoke... because only L&M's Miracle Tip gives you the effective filtration you need. Enjoy L&M's king size or regular... both at the same low price. Like thousands, you'll say—"They're just what the doctor ordered."

More Flavor — Less Nicotine

America's Best Filter Cigarette!



Enjoying "The Pause That Refreshes"



It's "Refreshment Time"

AT

Bryant College Snack Bar

Located in Cafeteria

Open Mon.-Thurs. 9:30 to 7 P.M. — Fri. 9:30 to 4:30 P.M.

All Students are Welcome to Enjoy Good Food at Low Prices

Alpha Theta Dominates Bowling League

ATC, Paced by Jack Hall, Tops in All Departments

By ED BETROS

The inevitable finally happened. Alpha Theta Chi won the first half in boys' bowling in true championship style. Paced by that very excellent bowler, Jack Hall, who bowled 427 for three strings, Alpha Theta beat Phi Sigma Nu 3-1. Phi Sig put up a good fight but the marks of Jack, Gerry Sepe (318) and Bill Oliver (332) were too, too much. Barry Fellman with 347 and Bernie Sherwill with 329 paced the losers.

Chi Gamma, who has lost Frank Rondo, slipped considerably. Kappa Tau beat Chi Gamma 3-1. Dick Gaziorek with 364 and Steve Kacerik with 342 were too much for Chi Gam. Don O'Neil and Bob Kofsuske bowled 332 and 330 respectively for the losers.

Beta Iota Beta has closed fast in the last few weeks. Paced by newcomers Dave DiRosa (295) and Joe Sanderson (320), B I B ended up in fourth place by splitting with Tau Ep 2-2. Joe Ruggieri bowled 303 for the losers.

Sigma Lambda Pi took 3 from Beta Sigma Chi. Al Blank and Jerry Blumenthal bowled 281 for the losers. Bob Landry with 276 paced the winners.

Below are all the averages and facts concerning the first round in boys' bowling:

FINAL STANDINGS			
FIRST HALF			
Team	Won	Lost	
Alpha Theta Chi	24	4	
Phi Sigma Nu	19	9	
Chi Gamma Iota	18	10	
Beta Iota Beta	17	11	
Kappa Tau	13	15	
Tap Epsilon	10	18	
Sigma Lambda Pi	7	21	
Beta Sigma Chi	4	24	

Top 20 Bowlers as of November 17, 1954		
Name and Fraternity	Avg.	
J. Hall, Alpha Theta Chi	119.6	
F. Rondo, Chi Gamma Iota	116.1	
B. Oliver, Alpha Theta Chi	111.4	
J. Sepe, Alpha Theta Chi	110.3	
E. Betros, Phi Sigma Nu	108.8	

Campus Capers

(Continued from Page 3)

traditional "Help Week" activities. As usual the Beta pledges will not be degraded in front of the students, but will do odd jobs for needy organizations. The usual final initiation is being planned for December 10. Beta has been working hard to promote Joan Todd for their "Sno' Queen." How do you like those new Blue and Gold uniforms the basketball team is sporting? Credit is due Jim DiOrio and Herb Schaller for their excellent teamwork and continuing spirit which has helped keep the basketball team near the top. Plans have been started for the pledge banquet which will be held sometime in January. Congratulations are due to Ray Schaller for being elected to the office of Chaplain. The Beta Crier is being prepared for all Beta Alumni under the guidance of Bob Reynolds, Alumni Secretary.

SIGMA LAMBDA THETA: Now that the final bids are out to the pledges, the sisters of Sigma Lambda Theta have been planning Hell Week. They find that the biggest part of Hell Week will be the choosing of the Sno' Queen and are helping their brothers with the campaign. A Thanksgiving basket has been donated to a needy family this year. This giving of a Thanksgiving basket is an annual project for the sisters. All of the pledges and sisters enjoyed themselves at the recent party they had with their brothers. The sisters want to congratulate Pat Guziewicz and Pat Giraux for the successful parts they played in "Mother is a Freshman."

KAPPA DELTA KAPPA: Hats off to Ronnie Sher and Walt Hanson, two of our brothers from Tau Epsilon, who have given their time to coach KDK's basketball team. By the way, both the sorority's basketball team and bowling teams are doing great work. The sister's of KDK are already making preparations for "Help Week" and are looking forward to welcoming a group of really interested girls as pledges. Kappa Delta Kappa wishes Tau Epsilon the best of luck in the "Sno' Queen" elections.

SIGMA IOTA CHI: Once again the sisters have reason to be proud of their brothers. Congratulations, fellows, on winning the trophy at the Turkey Trot, November 13, 1954. On Monday, November 15, SIC sisters had their annual coffee hour for their future pledges. Everyone had a good time with the afternoon highlighted by, shall we say some sweet harmony? The sisters on the bowling team finally met their great rivals, the girls of Sigma Iota Beta. Even though we didn't win, we certainly had a good time trying. A very nice game, girls.

ALPHA PHI KAPPA is busy making plans for Hell Week to welcome their pledges into the sorority. Plans are also being made to help their brothers of Kappa Tau with their Sno' Queen campaign. Congratulations and success to Audrey Perreault, Kappa Tau's choice! The coming weeks will be filled with the tension that always accompanies the basketball season. May Alpha Phi Kappa's team have a very successful season!!

BETA SIGMA GAMMA held open house for prospective pledges on November 10 at Gregg Hall. Everyone had an informally good time and all joined in a community sing afterward. Refreshments were served; and boy, were those donuts and cider good! A regular sorority meeting followed at which time plans for Hell Week were sketched.

Basketball First Half Ends

By CHUCK JOURDENAIS

The basketball season, in both day and night league, is in full swing with plenty of action and competition.

The day league seemed the tighter of the two with the Newman Club on top with a 10 and 1 record. The Newman Club grabbed the lead last Tuesday when they defeated their nearest competitor, Alpha Theta Chi by the slim margin of 43 to 38. Before this game both teams had a 9 and 1 record. Leading the Newman Club to victories have been Joe Pitonack, Dave DiRosa, Larry Delehanty, Tom Vallante and Arnie Robbins. Top scorers for Alpha Theta Chi are Ralph Buontempo, Harry Taylor, and Tony Almonte. This Alpha Theta team has been a threat all season and should prove trouble for the Newman Club before the season ends.

But, this is not only a two team fight; Tau Epsilon, Kappa Tau, and Sigma Lambda Pi have improved strongly and should be right in the thick of the battle in the next round. Last Monday, Kappa Tau gave a scare to the Newman Club when they lost a squeaker to them by the score of 29 to 26. The Newman Club pulled it out in the last two minutes of play. Tau Epsilon also threatened the "leaders" last week when they lost a game to them by a 51 to 47 margin.

In the night league, Phi Sigma Nu seemed to have cinched the first round of play with their flawless record of 8 and 0. Chi Gamma, who is in second place with a 5 and 2 record, has a good strong team and has been paced by their top scorers Phil McManus, Frank Rondo, and Hugh Dunlap. Phi Sig's Joe Trepani, Bernie Sherwill, and Al Van Patton have given this team the strength needed. Although Phi Sigma Nu has breezed along with little trouble, watch out for this Chi Gamma team. They have a team that can very well upset the "apple-cart."

Kappa Tau, Beta Sigma Chi and Beta Iota Beta have also shown much progress in their teams and may surprise both these teams in the second round.

Both leagues have provided the basketball enthusiast with plenty of action up to now. This sports-writer's compliments to Bernie Sherwill for his fine job as Athletic Director and to the referees Frank Rondo, Andy Cappolelli, Ernie Mendillo, and Tony Sousa; also to the scorers Pete Markou and Frank Zeffiro for the fine job they have done.

Every student that can possibly make it should try to come in and watch these games and cheer his favorite team to victory. This is the only type of sport offered to the Bryant student; so, why not take advantage of it and come in and watch the games.

BASKETBALL

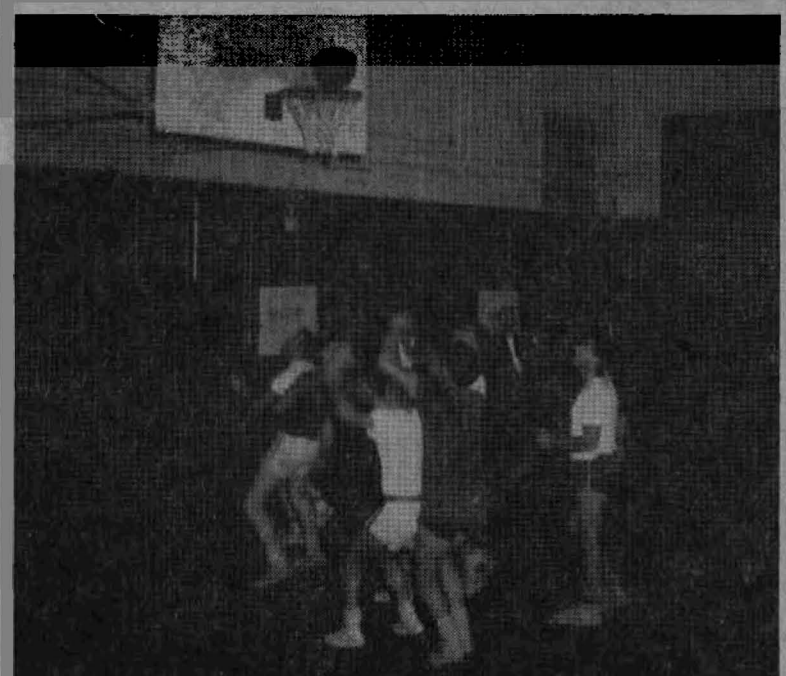
Final Standings — First Half

Day League

Newman Club	10-1
Alpha Theta Chi	8-2
Tau Epsilon	6-6
Kappa Tau	3-9
Sigma Lambda Pi	0-9

Night League

Phi Sigma Nu	8-0
Chi Gamma Iota	5-2
Beta Sigma Chi	3-4
Kappa Tau	2-5
Beta Iota Beta	0-7



Action takes place in game between Beta Sigma Chi and Phi Sig. Anxious eyes wait to see if ball will enter the net. It did not. Rebound was taken by Phi Sig who went on to win by a narrow margin.

WE DO NOT SELL COUPON BOOKS

We Sell Only The Best In Service

BROOK STREET GARAGE

250 Brook Street GA. 1-9883

SIGMA LAMBDA PI held an informal get together for prospective brothers on Tuesday night, November 16, and the brothers were very happy to see such a large turnout. Plans are now underway to make this year's "Sno' Ball" one that will be remembered by the student body for a long time. Although we got off to a bad start in bowling, the brothers have been practicing and there has been a definite improvement. The basketball team is coming along and looks better at every game. It was announced by president, Marty Bernstein that there will be many social events in the future for all the brothers to participate in. In addition, two affairs in conjunction with our sister sorority, Beta Sigma Gamma. The brothers would like to congratulate Brother David Strassler on the excellent showing he made in the recent dance contest.

The Sports Whirl

By ED BETROS



The first round is over in bowling and basketball. In bowling, Alpha Theta Chi took first place. Much credit must be given to Alpha Theta's anchor man, Jack Hall. He is a bowler whom you would like to see on your team. He is always dangerous. Keep "zinging" them down there, Jack.

In boy's basketball, the Newman Club won the day league and Phi Sigma Nu won the night league. Under the able coaching of John Olmino, Newman Club fought off all opposition to pull through as victors. Phi Sig went through the night league undefeated by winning eight games.

However, Phi Sig lost for eight weeks a very able man in our student athletic director, Bernie Sherwill. He broke his wrist in a game last week. It is a big loss for Phi Sig because Bernie is one of the best in either league.

Since basketball has started, many injuries have occurred in the gym. I think mats should be provided for the walls on either side of the gym. How about it?

The Bryant Field is now finished but is not ready for use. Grass has been planted, but is not yet firm. Touch football, volley ball, and horseshoes, plus football have been planned for next year.

Hooray for 4BA I! They beat 4 A&F in a football game last week, and at the time of this writing plan to play 1st semester.

Girl's Basketball Begins With A Bang at Bryant

By ANN MOORE

There was a lot of fast action in the gym November 10, when last year's two top teams, Theta and SIB, started off the girls' basketball league. SIB had about the same lineup as last year, but Theta sported practically a whole new team led by "Star" Nora Bestwick.

The first quarter was unusually slow, but it was only a matter of time before both teams loosened up. Theta gained a quick lead on SIB and held it throughout the first half. In the second half SIB started moving the ball around better and took the lead. Both teams played a hard and fast ball game, with SIB coming out on top. The final score was 50-41, with Anne Moore racking up 47 points for SIB and Arlene Yaunch scoring 19 for Theta.

The second game between Alpha Phi Kappa and Kappa Delta Kappa was a real thriller. It was anybody's game right up until the last minute of the final quarter. Both teams were fairly evenly matched, and at the end of the third period it was a tied score. In the last quarter Alpha Phi's defense broke up just enough to let Mimi Pires and Joan St. Gerard score those necessary points to win the game, 45-41. Gerry Sadler played an excellent game, racking up 31 points for Alpha Phi. Joan St. Gerard was high scorer for KDK with 19 points.

On the following Wednesday, Sigma Iota Chi played Phi Upsilon in the first game. SIC didn't have any trouble taking the lead and holding it throughout the entire game. The final score was 44-17, with Bev Smith sinking 18 points for SIC and Jackie Ducharme making 8 for Phi Up.

The pace was stepped up considerably in the next game when SIB and KDK met head on. The score was tied in the first half, and then SIB started to make a little headway. KDK's defense was tight, but it was finally broken up and SIB went on to win the game 53-38. High scorer for SIB was Anne Moore with 31 points and Joan St. Gerard for KDK with 14 points.

The competition this season is by far greater than last year, and right now it's impossible to forecast a winner. All that can be said is, may the best team win.

By the way, how about that officiating? Those refs are really on the ball. Congrats Andy and Frank, you're doing a great job.

Unsteady Pendulum

Chapel Hill, N.C.—(I.P.)—"The pendulum has swung" on the question of segregating freshmen into separate dormitories and restricting them from pledging fraternities, declares Chancellor Robert B. House of the University of North Carolina.

"At one time we had that policy of housing freshmen in separate dorms. We found that it wasn't good. Now the pendulum is swinging back. I don't know where it will stop."

About the other rule recommended by the State of University Conference to restrict freshmen from fraternity participation, he said, "the pendulum has swung again. When I was a freshman (in the 1910's) we had a rule like that. Around in

the twenties it was discovered that it was of great value to a freshman to pledge a fraternity. Now the counter idea is coming up." He added that he did not believe that "fraternities are the cause for students studying or not studying."

Both rules dealing with freshmen were presented in a report given by Dr. Eugene Pfaff of Woman's College at the Consolidated University conference. Freshmen were segregated in separate dorms here until 1951 when the rule was changed.

The Interdormitory Council here has gone on record as opposing the proposal to house all freshmen in special dormitories as suggested by Dr. Pfaff. An I.D.C. Court spokesman revealed that court records prove that freshmen offenses are much more numerous when they are housed in special dormitories than when they are allowed to room with upperclassmen.

Phi Sig Leads Blood Donors

A total of 67 pints of blood was contributed at the recent blood drive held at the Central Congregational Church.

All the blood that was donated will be used solely for hospitalized veterans and Gamma Globulin.

Phi Sigma Nu took first place among the fraternities by donating 25 pints of blood. Kappa Tau and Beta Iota Beta were second and third respectively.

What's In A Name?

- Paul not started,
- Paul not finished,
- Paul DUNNE.
- Lucille not sharp,
- Lucille not minor,
- Lucille MAJOR.
- Loyal not big field,
- Loyal not tiny field,
- Loyal LITTLEFIELD
- June not king,
- June not queen,
- June KNIGHT.