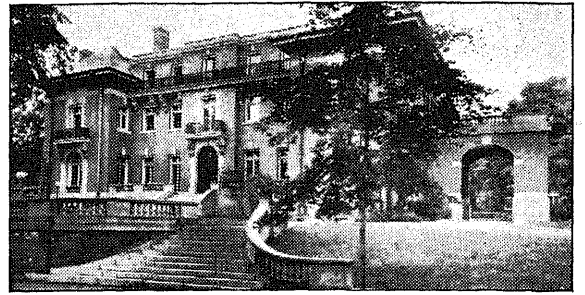


- THE - ARCHWAY



VOL. 1. No. 1.

BRYANT COLLEGE, PROVIDENCE, R. I.

FEBRUARY, 1946

New Enrollment Largest In History

200 Veterans to Start Classes In February

On February 25, the largest number of students to enter Bryant College at the mid-year term will be passing under the archway. With over 200 veterans signed up for the Business Administration, Accountancy and finance, and refresher courses and at least 50 other enrollees for the secretarial department our school is having a difficult time to find housing space for it's many out-of-town students. This large enrollment will also affect the September enrollment.

Never in the history of the school have so many students enrolled at the mid-year term. This year's enrollment is an all-time record. These students are from all parts of the United States. Very few come from Providence or near-by areas. There are even several students from out of the country to add to the college melting pot. There is a girl from the Panama Canal Zone and another from Iceland.

The housing shortage is even affecting college enrollment as Bryant officials are having difficulty in placing their out-of-town students in suitable living quarters. This shortage is affecting the many in-coming Veterans who are married and want to find living quarters for themselves and their wives. Classes will probably be filled to capacity as limited space prevents the making of smaller class groups. With a large teaching staff the College is trying to combat the necessity of large classes due to the limited space available.

(Continued on Page 4)

Their First Big Step Together

Craig Edgar and Betty Roux have taken their first big step together. Recently, Betty announced her engagement to Craig and at the same time, she stated their intentions of taking the second and final step, the wedding, during Craig's summer vacation this August.

Betty Roux is a member of the Rhode Island School of Design, class of '49, where she is majoring in Commercial Art. She is also active in the College Dramatic Society.

Craig Edgar is a first year teacher training students here at Bryant. He is an active member of Tau Epsilon Fraternity and Exchange Manager of the Archway.

NEW DEAN OF WOMEN NAMED

Mrs. Dorothy Robinson has been named Dean of Women and Guidance Councilor here at Bryant.

Mrs. Robinson has had a great deal of experience in this line for she was connected with the Providence School Department of Guidance and Counseling for a number of years, as well as three years in the same capacity at Mt. Pleasant High School.

A native of Providence, Mrs. Robinson attended Pembroke College and from there she received her Masters Degree.

During the interview Mrs. Robinson stated that she was very much impressed with Bryant College and with the new idea of guidance counseling that is being enacted here. She went on to explain that guidance counseling is intended to help the girls to become acclimated to college life and through advice to live happier and more successful lives.

At the present time Mrs. Robinson's office is located in what was formerly the library where she may be found Tuesdays, Wednesdays, and Thursday. It is hoped by the college that all the women students will take advantage of this opportunity to receive advice and guidance through their college life.

YEAR BOOK STAFF NAMED

Work on The Ledger, the annual Bryant College year book has begun according to members of the staff. Since this year brings with it peace The Ledger promises to be one of the finest books yet to be seen on the Bryant Campus.

The members of The Ledger Staff are: Co-Editors, Jean Drosd and Edmund Clegg; Photography, Dorothy Olter; Literary, Robert Birt, Dorothy Stewart, Lucille Gotsell, Bernadine McCrudden, Colette Dickey, Betty Guidette, and June Steiner; Reportorial, Ruth Adamson, Joyce Finney, Mary Vales, Clara Lewis, Gladys Aranosian, Florence Rosen, Natalie Pino and Mary Cogswell; Advertising, Mildred Valenta, Henry Zinno, Gilbert Corva; Art, Ethel Wexler, Robert LeBlanc, Roland Paris.

The members of the Staff would like to have announced that if there are any students who would like snapshots published in the year book, please give them to Miss Dorothy Olter. Once pictures are received, they are not returnable.

NEW CLASS HOURS FORMED

There is a radical increase in the number of students this term over that of any term in the history of Bryant College. Because of this, a special schedule of classes was instituted to accommodate this increase. As of last term there were three divisions in the B. A. Department. Now there are four arranged in early and late sessions. Included in this change will be an early session for the veterans taking a refresher course. The schedule of the students under the Secretarial and Executive Secretarial and Teachers Training course will remain the same.

The students under the classification of the B. A. Department, September freshmen, Division I, will start at 8:30 a. m. and continue until 1 p. m. September freshmen, Divisions II and III, will start at 10 a. m. and continue until 3:15 p. m. The September seniors under the B. A. Department will start at 8:30 and end at 1:45 p. m. February seniors will start at 10 a. m. and continue until 3:15 p. m.

The four divisions of incoming freshmen under the B. A. Department will also have a division of classes. It will be according to the early and late sessions. February freshmen Division I, will be early. Classes will start at 8:30 a. m. until 1:45 p. m. February freshmen, division II, will be late and their classes will start at 10:45 with the exception of one day which will start at 10 o'clock. This will continue until 3:15. Division III will be early. Classes will start at 8:30 a. m. until 1 p. m. Division IV will be neither early nor late. Classes will start at 9:15 until 2:30.

The freshman refresher courses will be approximately the same except that classes will start at 8:30 a. m. unless last-minute changes are made.

CONTEST WINNER IS ANNOUNCED

Beatrice Hirt, a first year Accountancy and Finance student, was announced as winner of the \$5.00 award given to the student who submitted the best name for the college newspaper.

The contest was sponsored by members of the staff in an effort to obtain a name for the paper. The entries were judged on their originality and their emphasis on some phases of Bryant life.

After considering and voting on the sixty-four entries submitted, the judges decided that Miss Hirt's entry, The Archway, was the best because under this popular place, located at the end of South Hall,

BETTY EVANS CHOSEN QUEEN

Miss Betty Evans was chosen Campus Queen at the annual dance of Tau Epsilon and Kappa Delta Kappa.

After a short speech Robert Arzuyan presented the Queen with a crown of Red Roses. Upon receiving the crown and with genuine modesty Betty politely said, "thank you very much." Now I'd better step



down before I fall down."

Betty is a junior in the Commercial Teachers Training Division, a member of Sigma Iota Chi Sorority, Vice President of the Newman Club and a member of Beta Chi Tau. She is a very industrious student and is working her way through college in the capacity of helper in the cafeteria.

The other contestants for the honor of becoming Campus Queen were, Vivian Thurston, Emily Horeman and Jean Murray.

TO HOLD STAR CREST FESTIVAL

The annual Star Crest Festival sponsored by Sigma Iota Beta and her brother fraternity Beta Iota Beta will be held February 26, 1946, at 8:00 p. m. in the Bryant Gym.

The social committee headed by Herbert Page have announced that there will be an outstanding floorshow, with the music conducted by the "Music Master" himself Tommy Masso and his orchestra.

For the past two years Sigma Iota Beta and Beta Iota Beta have held dances which have been very successful both socially and financially. Therefore if anyone is seeking a night that will be filled with enjoyable entertainment, attending the Star Crest Festival will make that night come true.

Tickets for the dance, which are 75c, may be obtained from any member of the sorority or fraternity otherwise you may buy them at the door.

the students pass to and from classes, they also gather here to comment on their studies, their teachers, campus gossip in general.

The Archway with both its meanings signifies the important place it holds in the college life at Bryant.

The Archway

Published Monthly during the College Year by the Students of Bryant College of Business Administration Providence, Rhode Island

Editor-in-Chief.....Robert Dutton
 Managing Editor.....Joan Todd
 Business Managers.....Ray Keller
 Advertising Managers { Alice Babcock
 Donald Jacobs
 Sam Mickelson
 Priscilla Flood
 Exchange Manager.....Craig Edgar
 Typists.....{ Esther Rossini
 Shirley Carpenter
 Faculty Adviser.....Miss Blaney

EDITORIAL STAFF

Shirley Wilbur Susan Cummings
 Jacqueline Brett Philip Watson
 Francis Sullivan Joseph Doman
 Helen Friedman Clara Lewis
 Florence Levine Myles Boothie
 Virginia Woodruff Eileen Kingsley
 Robert Smith Victoria Healy

It's Your Paper

The Archway Staff presents to you, the students of Bryant College the first issue of the new student publication that will be published on the first day of every month throughout the college year.

Each and every student is invited to contribute news items, poems, classroom jokes, or any other material that you would like to have printed in the paper. These contributions along with any letters to the editor that you may wish to have published may be given to any member of the staff or deposited in the News box. All material submitted that can possibly be used will be published as received.

Students, this paper is printed for you with the staff as your representatives. It is with this idea that we sincerely urge you to submit any suggestions or criticisms that you have to offer. The staff cannot publish a paper that will meet with your approval unless you will give it your help and whole-hearted support.

I am sure that with the complete support of the student body backing the untiring efforts of the staff that the Archway will be a paper that we all can be proud of.

—Editor

ROBERT TAYLOR? ALAN LADD?

Are you interested in becoming any one of these famous personalities? If you are, the MASQUERS will give you your chance.

The dramatic club of Bryant College is desperately in need of actors. Even if you have never acted before in your life, you are still eligible to join and participate in our social activities.

Why not be game and give your name to Miss Bucolo. She will be happy to furnish you with further information about this organization.

Caste is the mark of an educated man, imagination the sign of a productive man, and emotional balance the token of a mature man.

* * *

The reason that cupid makes so many bad shots is because he is aiming at the heart and looking at the hosiery.

AROUND THE CAMPUS

Phi Sigma Nu

With the advent of peace and the increasing enrollment of returning veterans the fraternities on campus are returning to prewar strength. Phi Sigma Nu, as it has been in the past, is once again the most prominent and largest organization on the campus.

Under the capable leadership of its officers: John Lindia, President; Philip Clegg, Treasurer; Robert Birt, Asst. Treasurer; and Charles Clayton, Sgt. at Arms. Phi Sigma Nu started the new college year by taking the lead in the social life of the college. On December 7, the fraternity and its sister sorority Sigma Iota Chi gave a dinner dance for the pledgees at the Wanamoyett Country Club. Our faculty advisors Mr. Vinal and Mr. O'Brien entertained everyone with their ready and nimble wit.

Now that the fraternity is back to prewar standards it intends to return to its policy of semi-annual elections. A dinner at which the new officers for the next period will be elected, is to take place in the near future.

The Newman Club

The Newman Club, which holds its formal meetings on the second Wednesday of each month, promises to be very interesting at its next meeting in February. Father Kelley, the moderator of the organization will be the speaker and his subject will be "The Catholic Concept of Marriage."

Also at this meeting the question box will be inaugurated.

All members will be urged to write on slips of paper questions pertaining to any particular phase of religion they may wish to have clarified. The slips will be inserted into a box and handed to Father Kelley who will answer the questions after the topic for the evening has been discussed.

As at our past meetings a social hour with dancing and refreshments follow the meeting. Every-

Justice O'Connell Speaks at Assembly

At the January 4th Assembly Jersmiah O'Connell, the Chief Justice of the Rhode Island Superior Court spoke on the subject of "Important things you should know about your Law."

During his talk Judge O'Connell outlined the judicial branches of Rhode Island's Government and spoke briefly on each one. He also took a Hypothetical case and pointed out the facts that a jury has to be able to determine.

After outlining his talk to the assembled students, Judge O'Connell continued with a more detailed explanation of the court system by explaining that there are twelve District Courts in Rhode Island. These courts are spread so as to be able to cover the entire state. These courts do not have a jury, but they have the authority to try cases amounting to not more than \$1000, also one year in prison is the stiffest sentence that they may impose.

The Superior Court consists of eleven judges, ten associate judges and one presiding judge. These judges sit anywhere in the state

(Continued on Page 4)

Coming Assemblies

Dr. Israel Goldman

On February 14, Doctor Israel Goldman will address the students of Bryant College. His subject will be "The Importance of Vision for a Successful Life."

Doctor Goldman, Rabbi of the Temple Emanuel for the past fifteen years, is widely known throughout Providence as a very able speaker. For many years he has made a study of the importance of vision in helping young men and women prepare for successful lives.

This assemble, the last one of the semester will terminate the second series of lectures given at Bryant College.

one is welcome and new members will be accepted.

Sigma Iota Chi

The Wamoyett Country Club of Rumford was the setting for the annual Pledge Formal of Sigma Iota Chi and Phi Sigma Nu held on December 7. Miss Ethel Crosby, a National Officer of Sigma Iota Chi from Hinsdale, New York, was a guest along with Miss Clara Blaney, our Sponsor. Claire Messinger, President was the toastmistress for the sorority while John Linda was the toastmaster for the fraternity.

Betty Evans, who was Treasurer of Sigma Iota Chi last year, was crowned Campus Queen at the Tau-Epsilon-Kappa Delta Kappa dance held January 12. Last year Bryant's Campus Queen was also a Sigma Chi girl, Shirley Carpenter.

Watch out! Appendicitis is in the air, for awhile at seemed contagious—Our President, Claire Messinger was the first victim. Two days later, Pat Quinn was rushed to St. Joseph's Hospital with an acute case. Both Claire and Pat are doing fine now and it won't be long before they will be back in school with—Good luck to both of you.

Beta Iota Beta

The Beta Iota Beta Fraternity wishes to extend their congratulations to George Kane on the birth of a son, George Edward Kane Jr. Where are those cigars, Pop???

What's this "Doc Babe" Jacobs being chased by E. B., and almost caught—Congratulations to P. C. for his die-in-attempt-manner to be original—"Al" Daley, our president is determined to make good citizens of its members by enforcing a congressional form of procedure at all meetings. Nice going, Al.

Many thanks to Professor Handy from the B. I. B. Basketball team for his fine display in showing the boys how to make those side-shot-baskets.

The B. I. B. and S. I. B. annual formal dinner dance will be held at the Hotel Narragansett, February 22. A well planned program has been arranged. The music will be provided by Tommy Masso and Orchestra.

A word of appreciation from the B. I. B. fraternity to the Student Council for their fine work—Congratulations to a former B. I. B. who is that way about R. B.

Sigma Iota Beta

The pledge dinner dance formal of Sigma Iota Beta to be held at the Metacomet Country Club will mark the second anniversary of

(Continued on Page 4)

Have You Met?



Holmsteinn Steingrimsson

Holmsteinn Steingrimsson arrived in the States on the tenth of September last after a pleasant plane trip from his native Iceland. All his thoughts were directed toward his two years ahead—a new people, a new language, a new land. Indeed, the future held great promise, for college life undoubtedly would prove most interesting. Now that several months have passed, Holmsteinn feels quite acclimated; he is rapidly mastering a language which was completely new to him and is looking forward to many happy, profitable months. For those who are not familiar with his homeland, Holmsteinn offers the following high points of interest.

Iceland which formerly belonged to Denmark but has been an independent country since 1944 num-

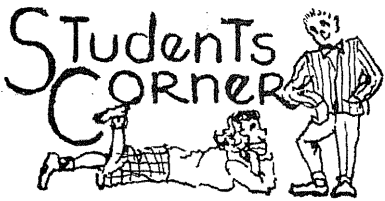
bers about 130,000 in population. The language spoken is Icelandic which is the original language of the Scandanavi n countries. Although t h e name would lead one to believe otherwise, Holms t e i n n maintains that



during the winter it is colder here in New England than in his homeland; however the summers are much cooler there. A very unique feature of Iceland is the Hot Springs which by connecting pipes furnish heat and hot water to the houses. The capital city of Iceland, Reykjevik, is heated entirely by this way.

Social life in Iceland is centered chiefly around sports. In the winter, skiing and skating resign as the monarchical dignitaries of the sports world. Every town and village has societies composed, for the most part, of young people who so ardently love the athletic life that their one desire is to live out under the blue heavens. On weekends these young people go into the country for skiing and skating. These societies own mountain lodges which are used for dancing and other social activities. In the summer, the public interest is held primarily by football; however there are many swimming enthusiasts. Most of the movies shown in Iceland are from either America or Sweden; the Icelanders are not very great movie goers however. There are several hotels and clubs where one may dance; in all the hotels there are two ballrooms, one is reserved for those who prefer the national dances of Iceland while the other accommodates those more inclined to modernism.

Holmsteinn, who is pursuing the course in Accountancy and Finance, hopes on completion of his College career to return to his native land where he will assume responsibilities in the business life of Iceland.



Jokes in other books remind us
That we have some bum ones too.
Blame yourself—they'd have
been better
If you had handed in a few.

John brought home his report card, and with it was a letter from the Dean. "Dear Mrs. Blank," the letter said. "John is a smart student but he spends all of his time with the girls. I'm trying to think of some way to cure him."

Mrs. Blank studied the note, then wrote the Dean the following. "Dear Mr. B.A.: If you find some way to cure him, please let me know. I am having the same trouble with his old man."

Priest: Valeff, you asked me to pray for Anna Bell last Sunday. Would you like me to repeat the pray this Sunday?

Valeff: No thanks; Anna Bell won last Monday at 7 to 1.

Girls worry about their hats and their shoes. Between the two there's enough to worry anybody.

Freshman: "I've added those figures up ten times, Sir."

Math Prof.: "Good!"
Freshman: "And here are the ten answers, Sir!"

Not so long ago Mr. Gulski was seen walking to his office, after correcting some tests, with a glassy stare in his eyes. After some inquiring it was learned that the answer was a simple one. Ed Butler received 93 in a Cost Accounting Exam. We hope that Mr. Gulski has fully recovered from the shock by now.

Q.—"What is a female shopper?"

A.—"A female shopper is a woman who can hurry through a department store aisle 18 inches wide without brushing against the piled-up glassware, and then drive home and knock the doors off a 12 foot garage."

Midnight came and "wow, wow, wow," and another "wow" came from the baby. "Four bawls and I walk" groaned baseball minded George Kane as he slid out of bed.

Just because a man chooses a woman for a mate doesn't necessarily make him the captain.

What happened to that F.B.I. man we had in Bryant College? Was he called off the case or did the fellows scare him off!

After a terrific struggle, a law II student finally finished his examination paper, and then at the end wrote: "Dear Professor _____?: If you sell any of my answers to the funny papers I expect you to split 50-50 with me."

Then there's the absent-minded professor who pinched the coed to see if he was awake.

SPORT HIGHLIGHTS

With the winter season still clamping on us basketball is currently holding the sporting live-light at Bryant.

Anyone who yearns for plenty of excitement has only to pay a visit to the Bryant auditorium any afternoon, except Friday.

Whereas, last year, we were limited in man-power, this year there is sufficient number of men attending the college to permit plenty of intra-mural competition for both boys and girls alike.

The boys intra-mural league is now in full swing with four good teams battling each other each Monday afternoon beginning at 3:15 p. m. Teams representing each of the college fraternities plus an independent team, have played through the first round. Results have been fairly close with Tau Epsilon Fraternity showing the way.

Thus far the Tau Eppers have not been beaten but are being challenged with every inch of the way by the flying Indies and the Teddy Bears. Beta Iota Beta have as yet to past there initial win but with the addition of a couple of new players are beginning to offer some real resistance.

John Borelli and Joe Donatelli of the Teddy Bears and Miles Boothe and Ray Keller of Tau Epsilon are battling for the individual scoring lead.

These boys, together with several others, have shown some clever ball handling, as well as plenty of dead eye shooting and making skill.

On Tuesday, Wednesday and Thursday afternoon the girls intra-mural league swings into action. Thrills and spills are plentiful.

With the first round of play just about over Harriet Hall still has yet to taste defeat. Each of the other teams has broken into the win column with the result that the league leaders are being hard pressed to stay on top.

Alice O'Day, of the top notch Harriet Hall sextet, is currently setting the pace for individual scoring honors with 42 points.

Offering plenty of competition in the scoring parade are two other

Dinner Guest: "Will you please pass the nuts."

Absent-minded Prof: "Yes, I suppose so—but I really should funk most of them."

State Cop: "Hey you pull over."

Herb Page: "I wasn't speeding was I officer?"

State Cop: "No, just flying too low."

Your editor-in-Chief is like the electric fan: Buzzes away all day, and blows off a lot of wind, but never says anything.

DEFINITIONS

Hollywoods—The land of yes men and acqui-yes girls.

Overheard comment on modernist architecture: It's my pet abhorption.

Definition of intoxications—To feel sophisticated and not be able to pronounce it.

Schoolboy wisdom (from an examination paper):—A pasive verb is one in which the subject is the sufferer, such as, "He was married to her."



(The staff cordially invites you to participate in this column by sending in your letters to the Editor.)

Dear Editor:

I wish to extend to you and to the staff, my best wishes for a successful paper. I know as well as the majority of the other students know, that what Bryant needs most is a good college paper. More power to you! —C. W.

To the Editor:

Is it true that the college newspaper will be published by and for the students, without any outside intervention? If this is true, I know that for one, I will help and contribute to the paper all that I can and I think that the rest of the students will. —B. T.

(Editor's note: Yes, it is true that "The Archway" is published by and for the students. I hope that not only you, but all of the students will contribute to the paper.)

Editor:

I think that it would be a good idea if you had a column in the paper in which any jokes submitted by the students would be published. —W. V.

(Editor's note: That is exactly what the "Student's Corner" is for.)

promising varsity candidates, Lucille Gotsell of Bryant Hall with a point total of 39 points and Millie Valenta of Eldridge Hall with 32.

Team tryouts for the girls varsity team are expected to be held soon. The above mentioned scoring leaders, together with several other promising candidates, are expected to form the nucleus of this year's Bryant sextet.

Coach Dickerman has already scheduled a home series with Clark University of Worcester, Massachusetts and plans are being formulated for several games with other colleges including Rhode Island State.

A team rooting section helps lend the necessary support that spurs a team on to win. They inspire a team with fighting spirit. These intra-mural basketball games provide plenty of excitement and fun for all. They would be much more exciting with a good rooting section on the side lines. Even though you omit a participant, how about lending a little support to your team. Watch the schedules which are posted well in advance of the scheduled games, and when your team plays come over to the auditorium and shout your head off.

Young China Restaurant

250 Warren Ave
East Providence
Tel. East Prov. 0037

QUESTION OF THE MONTH

All students are invited to answer the "Question of the Month" that will appear in each issue of the Archway. The answers are to be written in not more than 25 words, signed by the students and deposited in the News box.

A wide variety of all the answers received will be selected and published in the next issue.

The question for this month is: **WHAT DO YOU THINK OF THE COLLEGE ASSEMBLIES?**

Dear Editor:

Would it be possible for you to tell me if we do have a Student Council and if we do why isn't it doing something in-behalf of the students. I think that it would be a lot better if it would do something instead of arguing all the time.

(Editor's note: Yes, Bryant College has a Student Council and an active one at that. I suggest that you see John Linda, President of the council for further information.)

A POEM

I contemplate on writing
Verses of delight,

But happy thoughts come spurting
To my paper white

Only when my heart is free
From banal cares—earthly woe.

Escape my patterns of glee!
What design? I do not know.

By Barbara Feldman

Compliments of

Bryant Cafeteria

Where good food
is always served

WALDORF



For
FORMAL
DANCES
To Hire
N-E-W
TUXEDOS

Waldorf Clothing Co.

Men's Formal Wear—Exclusively

212 Union Street

Cor. Weybosset

SUMMER SERENADE

The time: a sultry summer day
 The scene: beneath the sun
 The character is you or I
 Now, curtain lights, Act one
 (In moaning Tone) "I'm burning hot
 Oh, why, oh why, oh why
 Can't it be freezing cold and hot
 The middle of July?"
 The calendar has thinned since then,
 Along with it the air.
 Can it be you who stamps his feet
 And mutters in despair—
 "A matador could use my nose,
 My feet are frozen blue;
 If only it were summer now
 I'd have no cause to rue."
 (The Classical Review)

—Justice O'Connell

(Continued from Page 2)

according to where the Superior Court is convening.

Five judges sit on the Supreme Court bench. They do not try cases but merely pass on judicial points and review questions of law, arising from other judges interpretation and judgments.

The Probate Court, of which one is found in Providence appoints administrators of estates also guardians, adoptions and other similar cases.

The Police Court is the lowest court found in the judicial government. The main function of this court is to punish violations of city ordinances.

Judge O'Connell went on further to explain some of the point of law in regard to accident cases.

He stated a hypothetical case where Smith and Jones are approaching an intersection. Smith coming from the east while Jones is approaching from the north. Both parties collide and Smith receives the worst of the accident consequently he sues Jones and becomes the plaintiff. Smith seeks recovery from damages arising from the negligence of Jones for \$5000. Since Smith is the plaintiff the burden of proving that the accident was caused by the negligence of Jones rests with him. If Jones, the defendant, can also prove to the satisfaction of the court that Smith, the plaintiff was also negligent, then Smith cannot recover any damages.

In closing Justice emphasized the fact that since someday we all may have the opportunity to serve on a jury or in some other way help to keep the wheels of justice moving, we all should know a few important things about our law. By knowing those few things it will help us to be better citizens and for the days ahead America will need good citizens more than she ever needed them.

Your editor-in-Chief is like the electric fan: Buzzes away all day, and blows off a lot of wind but never says anything.

Compliments of

WALTER L. GAVITT

Song of a Scholar

Tune: Thanks for the Memories

Thanks for the memories
 Of rows and rows of X's
 Your Southern drawl from Texas,
 And how we sat and stared
 While you looked at us and glared,
 How awful it was.
 And thanks for the memories
 Of hour exams at four,
 Of struggles worse than war,
 And once you gave me 22,
 But never any more
 So thank you so much.
 Long lines are driving me crazy,
 At interest rates I'm pretty bad,
 My poor whirling brain has gone hazy,
 And pretty soon, I shall go mad.
 So thanks, for the memories
 Though you were such a dear,
 You never made math clear
 I still can't understand it,
 And the end is drawing near
 So thank you so much.

—Around the Campus

(Continued from Page 2)

this sorority at Bryant. For the past two years Sigma Iota Beta has been very successful in all the social events it has held.

On February 16, 1946, there will be a dance at Bryant gym sponsored by Sigma Iota Beta and her brother fraternity Beta Iota Beta. The music will be furnished by Tommy Masso and his orchestra, admission will be 75 cents.

In February of 1944 this sorority was organized by a group of five girls. The membership has since increased to forty-five members. This sorority accepts pledges every six months, in February and in September at a semi-annual "Rush Party" held in the gym.

The present officers of Sigma Iota Beta are President, Mary Coccia; Vice-President, Emma Bianchi; Secretary, Vivian La Fucia, Treasurer, Mary Dederian. In February there is to be a new election of officers.

There are two things to aim at in life; first to get what you want; and after that to enjoy it. Only the wisest achieve the second.

Now comes the story of the absent-minded professor who rolled under a dresser and waited for his collar button to find him.

Compliments of

A FRIEND

A FRIEND

Many hours spent
 In friendly walks
 Made dear to me
 By our frank talks

A bit of a song
 In my memory
 Whenever heard
 Means you to me.

The lilt of your voice
 Heard o'er the phone
 Makes me wish
 You were my own.
 But just a smile
 Whene'er we meet
 Is all I ask
 For life complete
 My love for you
 Grows like a vine
 But fate is cruel
 You'll ne'er be mine.
 So if to you
 I won't belong
 Give me your smile
 It can't be wrong.
 My broken heart
 Will some day mend,
 And still you'll be
 My dearest friend.

—New Enrollment

(Continued from Page 1)

This large enrollment in February will affect the number of students coming in September. Places in September enrollment are held open for veterans taking the refresher course; therefore the fact that the veterans refresher course is the largest to ever hold classes and with the number of students taking the regular courses will naturally limit the number of students to be accepted in September to a lower mark than it ever been before.

The result of this large enrollment can easily be visioned. Professors are going to be busier than ever with rambunctious students, the checkers are going to have more papers to check, and the cafeteria is going to be fuller than before. Although this enrollment will probably not affect each of us personally, we will, no doubt, be conscious of more arms and new faces. We will be answering more questions about the College and its faculty but never-the-less the new students will receive a hand of welcome when they start their college life at Bryant.

Headquarters for

BRYANT JEWELRY,

Stationery and Pennants

is at

MACK'S INC.

Thayer St. Providence

— The — Archway Boosters

- Elaine Shapiro
- Joan Murley
- Ellie Arazaniewicz
- Joy Grabfelder
- Sue Cummings
- Sylvia Cash
- Doris L. Eliason
- Selma Rubin
- Etta Haberman
- Barbara Grinnell
- Mrs. Robert Dutton
- Anna Teresa Pino
- Mrs. Williams
- Alice Falugo
- Nanny Suarez
- Dell Burnham
- Gloria Rigali
- Charlotte V. Olson
- Olly Johnson
- Babs Oldham
- Jean Ballard
- Raymond W. Boynton, Jr.
- "Red" Brisson
- Bob "Deacon" Mullaly
- Ozzie Orzouyan (T. Ep)
- Mick Peter Pitanalli, Jr.
- "Sully" (T. Ep)
- Walter Gavitt, Jr.
- Tony Perri
- Bill Keith
- Esther Rossoni
- Catherine Houser
- Ray and Betty
- Ellen Bonner
- Dick Pierce
- "Jay Tee Todd"
- Milt Bolton
- Rickey Reamon
- Jack Gregory

Compliments of the

BROWN BEAR SHOP

Fountain—Good Food
Low Prices

Thayer & Benevolent St.

Best Wishes to the

ARCHWAY STAFF

For a successful paper

from

**PHI SIGMA NU
FRATERNITY**

Order your, out of town

Valentine Flowers

Early!

Corsages a Specialty

PAGE POTTER INC.

Thayer St. Providence