

10-9-1980

## The Quill -- October 9, 1980

Roger Williams University

Follow this and additional works at: [http://docs.rwu.edu/the\\_quill](http://docs.rwu.edu/the_quill)



Part of the [Education Commons](#)

---

### Recommended Citation

Roger Williams University, "The Quill -- October 9, 1980" (1980). *The Quill*. Paper 258.  
[http://docs.rwu.edu/the\\_quill/258](http://docs.rwu.edu/the_quill/258)

This News Article is brought to you for free and open access by the Student Publications at DOCS@RWU. It has been accepted for inclusion in The Quill by an authorized administrator of DOCS@RWU. For more information, please contact [mwu@rwu.edu](mailto:mwu@rwu.edu).



# The Quill

Vol. XXV Issue 3 Published by and for the students of RWC October 9, 1980

## RWC purchases apartments; Bristol protests over zoning

by Dawn Schauer

The situation Almeida apartments is not likely to get better in the near future, even with the addition of a 4.35 million dollar loan from the Dept of Housing and Urban Development.

The town of Bristol is opposing RWC's purchase of the Almeida complex on the basis of zoning laws.

Almeida's lease was not extended by the bank on Sept 30 forcing the college to purchase the apartments for approximately two million dollars.

Bristol opposes the purchase of the apartments on the grounds that Almeida, the K and R apartments, and the Bristol Motel Lodge are located in an area zoned for light business and apartments, not dormitories.

RWC states that although they have purchased Almeida, the apartments will be treated as such, not dormitories.

RWC has offered to appease Bristol by proposing three of four scholarships for Bristol teenagers. The total worth of the scholarships would almost equal the \$66,000 in tax revenues that Bristol is losing through the sale of Almeida.

Although Town Manager Sarah Amaral has reportedly rejected the offer, only the Town Council has the power to accept or reject any proposal by RWC to compensate Bristol.

"The Board of Trustees and I have made a sincere effort to make a financial agreement with Bristol in lieu of taxes," Rizzini said. "Our doors are still open to discuss options."

Even with the four million dollar HUD loan, it will be roughly two

years before apartment-style housing is completed on campus. The planned site for the new building is next to the new dorms adjacent to the water.

"I am concerned about students in the interim before the new housing is built," Rizzini said. "I want the students to continue being good citizens and above all I don't want them to become involved in the conflict."

The college has received a lot of publicity over the crisis. Neighbors have threatened to bring in lawyers over noisy vandalizing apartment-dwellers.

The Bristol Police Chief, however, has denied such rowdy behavior on the part of RWC students living in the area.

Rizzini has met with the Dean of Students and the night managers at Almeida to discuss what can be done about security and behavior problems. He held a meeting last week at Almeida to discuss the situation with students. It was not well attended.

Rizzini did not deny the possibility that the town of Bristol could evict students from Almeida. "The college is unfortunately involved in a legal issue over the status of the apartments and we are very sorry it happened."

RWC has not immediately paid two million dollars for Almeida. The college is making monthly payments of the same amount as previous monthly lease payments.

"The payments will not effect progress on the recreational facility," Rizzini stressed.

The college has fully paid Almeida's lease through June and has paid all back taxes on the property.



### Home, Sweet Home

From this view, the Almeida complex looks like any other neighborhood in the US. No students hanging out of windows, no beer cans littering the lawn.

## Administration readies for accreditation

by Dawn Schauer

The RWC administration is preparing for a visit by an accreditation team this month which will evaluate the college's performance and effectiveness.

Accreditation is comparable to preparing a report all semester and receiving a grade that will be 20 1/2 of your final grade in the class.

A visiting team of 7-18 experts in their field will arrive at RWC on Oct 19 and stay through Oct 22. These members of the New England Association of schools and colleges will investigate every facet of the college community.

The purpose of accreditation is to insure that RWC provides a good quality of education and that the college is making sure that every-

thing the college says it offers is actually being offered.

Accreditation is vitally important to the college. "It adds validity and prestige to the school," President Rizzini said. "It proves to prospective students that we provide quality education."

This year's visit is especially important. The last two times the accreditation committee visited, RWC had no permanent administration and was functioning without a president. President Rizzini was acting president during both of those visits.

Because of the turmoil, the accreditation committee did not scrutinize the college as closely as it normally would. They also did not renew

RWC's accreditation for as long as for as long as they might have. President Rizzini is hoping they will extend RWC's accreditation this year to three or five years.

When the accreditation team arrives, they literally take over an area of the college as their headquarters. For the length of their visit RWC functions around their wants.

They will be interviewing every segment of RWC; not only administrators and faculty, but members of the Student Senate, RA's and students. They will gather opinions on the strengths and weaknesses of the college.

Much preparation has already gone into this visit. Over the summer the

Turn to page 2

## Bristol water shortage not critical enough

RWC students will not be getting the extended vacation over and above that of the Columbus Day weekend that many have been expecting.

Bristol is still in the grip of a critical water shortage and the town is undergoing a program of voluntary rationing.

"The town water company has informed us that there are 40 days of water left, more or less," Vice-President McKenna said. "Based on what they tell us, there are no plans to close the college at the present time."

RWC is not immune from the lack of water, although the shortage has not progressed to the point of closing school.

The cafeteria began saving water last week by using paper plates and plastic silverware. The cafe plans to continue using paper utensils until October 14.



Gentlemen of the accreditation committee: As you can see RWC is in perfect working order.

# Senate News

## Treasurer Stacey Wall resigns from "apathetic" Senate

By Pat Forte

Treasurer Stacey Wall resigned last week from the Student Senate. He sees no place for himself on a Senate with no ambition.

Though the school year is only one month old, Wall claimed the Senate has no goals and is more concerned with social activities rather than student problems.

Wall was serving his third term as senator and had been treasurer for the previous year. He has shifted his attention to the social committee.

Wall denied rumors that he was forced out of the treasurer's position. He also said he had the time for the job. He explained that his decision was caused by "student apathy that has continued through the Senate."

As an example of apathy, Wall cited the Senate's attempt to lower the percentage of student votes needed to ratify the Senate charter from 20 percent to 15 percent of the college population. The charter expires this year.

Stressing that he does not want to badtalk the Senate, Wall conceded that the Senate is inexperienced and is rebuilding.

He believes a step in the right direction is the Senate's decision to make the Social Committee an independent body apart from the Senate.

Much of the Senate's preoccupation with social activities was due to the fact that one-third of the Senate are members of the Social Committee, according to Wall. Making it a separate organization should free the Senate to concentrate on a wider variety of student problems.

Student Senate President Ray Tedesco agreed that the Senate could be better and encourages students to go to him with any advice or problems they may have. "I feel it is only natural that the Senate become apathetic since it is fighting a losing battle with the student body," he said.

Tedesco sees the Senate as a force that would be missed on campus if it wasn't around.

In answer to Wall's comment that the Senate has no goals, Tedesco replied that they do have a goal, to get more of the student body involved in the Senate.

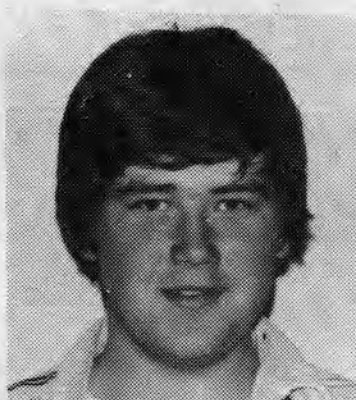
Brian Mullin has been appointed by Tedesco to replace Wall. It is Mullin's second year as a senator and he worked as assistant treasurer on last year's Senate.

Mullin describes the treasurer's position as "having the responsibility to observe all club monies and properties of the Student Senate."

Mullin is looking forward to the year and to his goal of "not going into the red."



Stacey Wall



Brian Mullin



Ray Tedesco

## Senate elections marred by disappointing voter response

After a very disappointing voter turnout, the Freshman senate elections results are in. Actually, this may have been the source of the problem. The elections were not only for freshman but also any transfer students that were interest-

ed in running. Every student at RWC was allowed to vote that was interested in voting.

Obviously, not every student voted as only 150 to 180 total votes were counted. This could be attributed to the fact that the campaigns of the individual candidates left quite a bit to be desired.

Foremost is the question -- who are these people? Hopefully those that were elected will show us more of their faces as well as their names.

The students who did make it were on the whole very enthusiastic.

**LAURIE CABELL:** a Paralegal major from Weymouth Mass., said "I'm happy that the students had confidence in me to voice their opinions. I wanted to be a senator because I'm interested in the

affairs of RWC, and how it runs, and I want to get involved with what the student's want out of RWC."

Laurie hopes to get the parking and registration problems attended to as she is eager to see a gym at RWC.

**BRIAN DUNN:** a Marine Biology major from Quincy, Mass, felt "that the position of senator is not just to help the freshman class, that is not the ball game here, I want to help the entire school ... the student government at my high school did not utilize what little power they had."

"I hope to get things done here at RWC. When I see something I don't like ... I plan to do something about it. I feel that I know the views of the students and I want the same things accomplished that they do."

About winning, Brian said, "I'm glad that I have a chance to have a say in the affairs of the school and to help the students."

**PHIL LONGO:** a Sociology

major from Bedford, New York, was in student government all four years of high school.

"I knew that whatever school I went to I would be involved in some form of student government. I feel that my experience in student government will help me on the RWC Student Senate."

"My main goal is to get the students to know one another, and establish some unity within RWC. I hope to encourage more participation from the students, especially the freshmen."

Phil was "really excited about winning. I had no idea I was going to win and I'm very anxious to get going."

The election result showed a decrease of about 150 ballots in voting as compared to last fall. According to Mark Grey, Student Senate parliamentarian, Laurie Campbell had the most votes with - 110; Brian Dunn - 98; Phil Longo - 93; and the two other candidates finished up with Sue LaFerriere - 67 and Robert Cody - 28.

Representatives from the James L. Maher Center, will be on campus October 10, 1980, from 10 am to 2 pm to interview students who are interested in working with their group home program of training program.

Students who are interested in being interviewed for a position with the Maher Center can sign up

with Ken Osborne in the Co-op office, Tower B, or stop by the snack bar on October 10.

Positions are also available for Natural Sciences majors as resource assistants at the Marine Fisheries office in Waterford, Conn.

There are also positions available with FAFNIR/TEXTRON in the

Industrial Engineering area. Interested students should see Carl Bittenbender in the Co-op office, Tower B.

Business majors interested in positions with the Department of the Navy or the IRS should contact Ken Cedergren in the main Co-op office, Tower D.

### Cooperative education opportunities listed

### Student Senate Appointments

The following people have been appointed to college committees for the 1980-81 school. If you have any question involving these committees, please feel free to contact the appropriate person.

Academic Council  
All College Council

Attrition & Retention

Accreditation Committee  
Budget Committee  
Curriculum Committee  
Dean of Students Committee  
Dorm Govt. Committee  
Energy Committee  
Faculty Senate  
Parking Committee

Ray Perry  
Monica Letourneau  
Ray Perry  
Wally Ramos  
Jeffrey Tucker  
Ray Tedesco  
Brian Mullin  
Jeffrey Tucker  
Kim Tinkham  
Wally Ramos  
Bob Delsandro  
Ray Tedesco  
Scott Bauer

### Accreditation visit

From page 1

college worked on a report which The study will be available in the records and assesses every aspect of library for anyone to read. Its contents, however, are not allowed departure from the usual question to be publicized until the accreditation committee has completed its examination.

Rather than answering specific At their last visit, the team questions, the self study looks at expressed that the lack of a curriculum, student services, and recreation facility was an obvious weakness. "As long as the administration can show we are making

Before the self study was submitted as a final draft it was read by division coordinators, the executive committee, and the Student Senate committee, and the Student Senate committee should be

DOO-WOP RECORD EXCHANGE

We buy, sell & trade new & used records Reggae & out of print Rock are our specialties Imports, Cutouts, Rarities and all of the latest releases.

Hundreds of Pic. sleeve 45's

We by entire collections.

38 Broadway, Newport  
Mon-Fri 12-6, Sat 10-6  
849-6496

**Student Senate Appointments**

The following people have been appointed to college committees for the 1980-81 school. If you have any question involving these committees, please feel free to contact the appropriate person.

Academic Council	Ray Perry
All College Council	Monica Letourneau
Attrition & Retention	Ray Perry
Accreditation Committee	Wally Ramos
Budget Committee	Jeffrey Tucker
Curriculum Committee	Ray Tedesco
Dean of Students Committee	Brian Mullin
Dorm Govt. Committee	Jeffrey Tucker
Energy Committee	Kim Tinkham
Faculty Senate	Wally Ramos
Parking Committee	Bob Delsandro
	Ray Tedesco
	Scott Bauer

# New disciplinary system a student experiment

by Dawn Schauer

A new, hopefully more effective disciplinary system at RWC has been designed for this year by the Student Life office.

A more democratic judiciary board was created to include increased student participation. The new procedure also limits the number of appeals a student may make.

A problem with the old process was that it was too lengthy. As many as four appeals could be involved, taking as long as two months to resolve.

"A student would think the more appeals the better while he was only postponing the inevitable," Haskell said. "I've not seen in those four appeals any change in the outcome, it only makes the situation more stressful for the student involved."

"A fault with the old system that the appeal board could only uphold the previous penalty, they could not strengthen it," Haskell said. With the new system, the penalties can be increased so a student takes a risk in appealing.

"More student input was needed," said the Dean of Student Life Karen Haskell. The previous system only allowed for three student senators. The current boards are made up of 15 students.

"These students will establish the norms on campus," Haskell said. "A college can make the rules, but by the penalties they give out the students will indicate which ones they take seriously."

Haskell wrote a first draft of the new system in June and had students living on campus make recommendations. "A legitimate criticism was made that only students had input in the writing of the documents," Haskell said, but she is open to suggestions from anyone. The final version was approved by the administration and the college lawyer.

Originally, only one student board was planned, however, Haskell thought that with a student population of 1200 the board might be also, conditions in the apartments were different than those experienced on campus. Hence, two separate boards were created, although they operate under the same guidelines.

Four disciplinary groups have been formed; two Student Judicial Boards, a College Disciplinary Committee, and a College Appeals Board. An on-campus Student Judiciary Board is composed of two head RA's, two resident assistants, and two students elected from the Dorm Government Committee. The board will only hear cases that apply to on-campus students.

Another Student Judiciary Board will be concerned with off-campus students living at Almeida, Bristol Motor Lodge, and K and R apartments. This board includes two head RA's, and two elected

off-campus students. Both judicial boards can impose fines up to \$100 or give work duties for penalties. The chairman of each board will know the penalties given out for certain offenses so there is consistency to the punishment. Haskell believes, however, that flexibility is important. "If any circumstances involved in two cases of the same offence vary, then the penalties can be individualized to an extent."

The chairman of the board at the first level cannot be a head RA because other head RA's present the cases. The board elects its own chairman.

The Student Judicial Boards are prepared in the event that a student who is a friend or enemy of a board member appears before the group. There is a pool of two people in each category on the board and six of the most unbiased in each case are chosen.

At the first level, a student has the choice of having a hearing before his head RA instead of appearing before the judicial board. The decision of the head RA, however, is not appealable. "I believe every student faced with that decision ought to have the learning experience of going before the board," Haskell affirmed.

The College Disciplinary Committee can take appeals or cases that involve expulsion or suspension. The first board can also refer a case to the committee if they think it is serious enough. This second level includes a student senator, a faculty member, and someone from the administration, none of whom have anything to do with student life office. "We felt it was unfair to have that certain viewpoint at this level," Haskell said.

The College Appeals Board handles all final appeals. Members include the Student Senate President, the Dean of Students, and a faculty member.

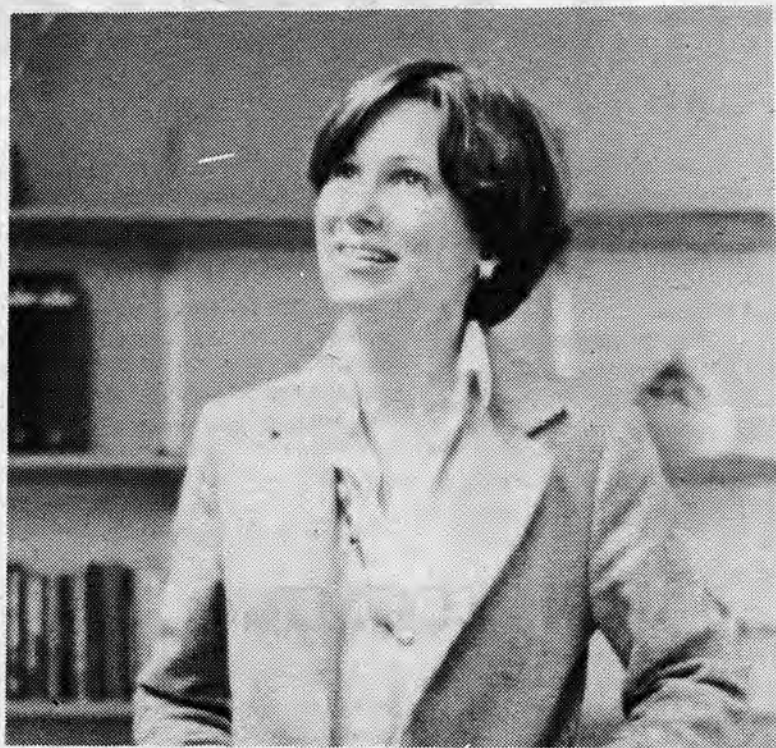
A student may have an advisor at any level and that advisor can be anyone; a faculty member, administrator, or friend. The advisor, however, cannot speak directly to the board. "Educationally, it is important for the student to learn to defend himself," Haskell explained.

A lawyer is not allowed at the first level. "We are not talking about serious penalties at this level," Haskell said. "If the accused brought in a lawyer, then the complainant would have to have one, and the college would bring one in. It becomes complicated all out of proportion to the offense."

"The experience at most colleges is that student boards are tougher than the administration would be," Haskell said. "RWC students have been tough, but I think they have been fair. They deal firmly with the situation." I think everyone basically wants a good environment."

All meetings of the boards are held in private, mainly for the protection of the student. "We are not hiding anything," Haskell said, "but there is no advantage in advertising the verdict." The proceedings are taped so that if an appeal is requested then the appeal board can listen to what exactly occurred.

"I believe every student faced with the choice of appearing either before the Student Judicial Board or the Head Resident ought to have the learning experience of going before the Board."



Karen Haskell

## RWC BUS SCHEDULE

MON-WED-FRI	TUES-THURS	SAT-SUN
<b>Motor Lodge-Campus</b>	<b>Motor Lodge-Campus</b>	<b>Motor Lodge-Campus</b>
7:30	7:30	
8:45	9:15	10:45
9:45	10:45	11:45
10:45	12:15	1:45
11:45	1:45	3:45
1:45	3:15	4:45
2:45	3:45	6:00
3:45	4:45	
4:45	6:45	
6:45		
<b>Campus-Motor Lodge</b>	<b>Campus-Motor Lodge</b>	<b>Campus-Motor Lodge</b>
11:00		
12:00	11:00	
1:00	12:30	1:00
3:00	2:00	2:00
5:00	4:00	4:00
6:15	6:15	1:00 (Sat)
10:00 (Mon., Wed.)	10:00	10:00 (Sun)
1:00 (Fri.)		

## JOHN SAVIANO'S VILLAGE TOYOTA-PEUGEOT SERVING YOU

AT ROGER WILLIAMS COLLEGE  
 FACTORY TRAINED TECHNICIANS  
**FREE Safety & Winter Inspection**  
 PLUS COLLEGE DISCOUNTS on Repairs of  
 All Makes of Cars - Bring your College ID

**FREE**

OIL FILTER  
 LUBE JOB  
 OIL CHANGE (UP TO 5 QT)  
 WITH A MAJOR TUNE UP  
 ON ANY TYPE CAR!  
 (Offer good until Oct. 15)



**FREE**

RIDES TO AND FROM SCHOOL  
 WHEN DROPPING YOUR CAR  
 FOR SERVICE

"Great Selection Of New  
 Toyotas and Peugeots"

COMPLETE BODY SHOP  
 FACILITIES FOR ALL MAKES

Sales & Leasing  
 253-2100

Service & Body Shop  
 253-2104

Parts  
 253-2107

**John Saviano's VILLAGE TOYOTA-PEUGEOT**  
 706 Metacom Ave., Bristol, R.I.

## Off-Campus Students

If you would like us to have your current off-campus address and telephone number fill in the form below and return it to the Dean of Students office in tower-A. This will enable us to be in touch with you in case of an emergency or an opportunity of employment, etc.

NAME \_\_\_\_\_  
 ADDRESS \_\_\_\_\_  
 PHONE \_\_\_\_\_

# Entertainment

## Movies

By Chris Morelli

- #### Excellent
- ### Good
- ## Fair
- # Poor
- # Pathetic

### THE PRODUCERS

Zero Mostel and Gene Wilder star in this little known Mel Brooks film.

Mostel plays a Broadway producer, while Wilder portrays his young accountant. Together, they devise a scheme to make money by producing the worst play they can find, "Springtime for Hitler." Ironically, this play that was supposedly a farce, was the only amusing part of the film. The acting in this movie was very

considering the poor quality of the material. This particular script did not reflect Mel Brooks' unusually effective offbeat humor.

Considering the poor quality of THE PRODUCERS, it is difficult to believe that this film was quoted by the Chicago Sun-Times as being, "...one of the funniest movies ever made." ##

### COMING UP

"Where Eagles Dare" will be shown Thursday and Sunday nights, October 9 and 12, at 7 and 9 pm in LH129. Chips and candy are available in the rear.

"Alien" will be shown Thursday and Sunday nights, October 16 and 19, at 7 and 9 pm in LH 129.

## Harpo's jazz club features reggae music

By Jim Long

Harpo's Newport Jazz club features quite a variety of name groups that are performing at concert halls.

Last Saturday I went down to hear the reggae music of Big Youth and Vibration Roots.

Big Youth is a well-known musician from Jamaica. When he first began recording, he had five out of his ten songs among the top ten in Jamaica.

He was the first reggae artist to perform in front of a sell-out crowd at Madison Square Garden. Big Youth with his dread locks was the first rasta man to enter the music industry.

Big Youth's music is purely roots music- music of the people. Music that relates to the people and most importantly it's for all the people. That's just what Big Youth did, he had all of Harpo's swaying to the Rasta beat.

Next time you're in the mood for some funky reggae, rock-n-roll, punk rock, jazz, or bluegrass, check out Harpo's Newport Jazz Club. It is the closest club that features name bands. I'll see you there tonight!

## HOME COMING

By Chris Morelli

The easy listening music of The Jewels of Dixie Band was enjoyed by everyone who roamed through the Homecoming tent.

Parents especially tuned into a few old classics while the students heard something not too often heard on this campus ... the brass horns of a jazz band!

The fast-paced country sound of Dave Ingells and the Desperados

gratified the attention of all. The band opened with some Charlie Daniels and continued to play popular country music. Young and old packed the tent to listen to the slick electric violin and the enjoyable country guitar sound.

Overall, the bands combined to play a well-rounded selection of music that was enjoyed by all. The general atmosphere of the tent, and the beautiful day, combined to inspire good music and smiling faces.

## Ratskellar

Therat is featuring selected movies every Tuesday and Thursday nights at 5 and 9 pm.

Beer (Busch and Lite) will be sold at the reduced price of \$1.50 a pitcher. Wine (Chablis and Rose) and soda will also be sold at the low prices of .60 and .25 a glass respectively.

The Rat is looking for anyone interested in playing spades or backgammon for fun and competition. Please contact Harley at the bar for further information.

The movie schedule is as follows:  
Thursday, 10/9 Tribute to Billy Holiday  
Tuesday, 10/14 Going South  
Thursday, 10/16 Heaven Can Wait

**ATTENTION SOAP FANS!!!**  
general Hospital will be shown every Friday at 3 pm in the Rat. Beer, soda, and wine will be sold. All are invited to come watch!!

**HAPPY HOUR EVERY FRIDAY**  
7-9 pm

**STACK MURDOCK**  
Appearing at Lou Falco's Outside Inn every Monday beginning Oct 20. Admission \$1 with college ID. 2 drinks for the price of 1 every Monday night.



*Barclay's*  
on the BLVD

FEATURING  
SUPER OUTDOOR DINING ON  
30 MEMORIAL BLVD WEST IN NEWPORT

Soups, Salads,  
Sandwiches, Dinners,  
Seafood Specials.

Reservations preferred  
849-6312

### COUPON

Complimentary  
Wine or Beer  
with  
Dinner

### BIG DADDY'S DISCOUNTS

The Small Department Store

with clothes and merchandise at  
**LOW, LOW PRICES!**

Long sleeve western & flannel shirts  
Fall jackets, 40-50 percent off  
Madewell farmer jeans & jump suits  
Wrap-around belts  
Tote bags

HOURS -- MON-WED -- 9:30-6  
THUR-FRI -- 9:30-9 SAT -- 9:30-6

### COME & VISIT US

10 PERCENT OFF WITH COLLEGE ID  
Gene and Izzy Lopes 391 Wood St  
253-4279 Bristol, RI 02809

### Grampa's Clean Machine

In by 10:00 **10% OFF**  
Out by 4:00 Laundry Service

Mon., Tues., Wed. Only  
Wash, Dry & Fold

Try Our Bulk Dry Cleaning  
(Expert Spot & Stain Removal)

Alterations: By Joan

446 Thames Street Bristol 253-5436

**COUPON**

Welcome to

"Tweet" Balzano's  
Family Restaurant



SPECIALS DAILY  
AIR-CONDITIONED

TUES.-SUN OPEN FROM 12 NOON  
400 Metacom Avenue  
Bristol, Rhode Island  
253-9811

### ARMY & NAVY SURPLUS

262 Thames St., Newport 847-3073



Genuine Gov't. Surplus  
P-Coats-Field Jackets  
Converse Sneakers  
Hiking Boots  
Rain Parkas-Sweatshirts

OPEN 7 DAYS A WEEK



### Introducing wash and wear haircuts.

A Command Performance haircut adapts the hairstyle you want to the hair you were born with. So even after a shampoo, our haircut continues to help your hair hold its shape. And you continue to get all the looks you're looking for. Shampoo, precision cut and blow dry for men and women. \$14. No appointment necessary, ever.

### Freebies.

To thank our customers for making us America's #1 hair styling chain, we're giving our first 500 customers a free official CP frisbee with every carefree precision cut & blow dry and this ad. offer expires 12-31-80

**Command Performance**  
for men and women

651 W. Main Rd., Middletown  
Route 114 (Next to Burger Chef). Open Mon-Fri  
9am-8pm. Sat 9am-6pm  
849-2886

Also-perms, conditioning, coloring, frosting.

# Quill Survey



Election month, is fast approaching. With all the hot air, imflamed speeches, *God Bless America*, and name-calling, it is easy to forget what the real issues at stake are.

Perhaps that's what the politicians want. ON this page you will find an opinion survey. The questionnaire covers the major topics of concern in this year's election.

Here is the opportunity to make your opinion known. Please check the box that is nearest your viewpoint in each category.

This survey is for the whole college community: students, faculty, administration, and custodians to name a few.

Cut out your survey and drop it in the boxes that will be set up in the cafeteria. The results will be tabulated and printed in the next issue of the Quill.



## State your opinion

### Inflation

- Inflation is all President Carter's fault and so far none of his policies to stop it have worked.
- I don't know what inflation is and I don't care, so long as they don't raise the price of beer in the Rat another 10 cents.
- Inflation is a big hoax perpetrated by the oil companies as an excuse to raise fuel prices.
- To end inflation, we must learn conservative buying habits, hike credit rates, and not buy foreign imports.

### Energy Crisis

- There is no energy crisis. It is a hoax perpetrated by the oil companies as an excuse to raise fuel prices.
- We must develop nuclear energy, solar and wind power, and new sources of fuel.
- All nuclear power plants should be shut down and we should increase our use of coal.
- We should conserve gasoline and lower thermostats to end the energy crisis.

### Draft Registration

- Men and women are equal and both should register for the draft.
- The only draft allowed should be draft beer.
- Men should honor their country, protect America, and register for the draft.
- The draft is a hoax perpetrated by the oil companies to raise fuel prices.

### Abortion

- Abortion is every women's constitutional right, and the government should foot the bill if a woman can't afford one.
- If a woman wants an abortion she should have one, but not at the taxpayers' expense.
- Abortion is murder, and I support an amendment to the constitution prohibiting it.

### ERA

- Women already have equal rights so the amendment is unnecessary.
- Women are inferior to men in some aspects and I am against the ERA.
- Women should enjoy all the rights and privileges of men and I support ERA!

## WANTED PART-TIME STAFF

*--To Provide RESPITE  
CARE and Services For  
Developmentally Disabled.*

**--Hours Flexible --Hourly Stipend  
Call 751-6481**

### FRIAR TUCK'S

6' SCREEN MONDAY NITE FOOTBALL

Thursday

## RACE THE CLOCK

**RACE THE CLOCK starts at 8:00 pm  
Drinks Start at 25 cents  
FEATURING -- Together -- Thurs.-Sun.  
Fridays**

**Frank Santos as R.I.'s own  
'R-RATED HYPNOTIST'**



683-3600  
144 Anthony Road  
Junction Rtes. 24 & 138  
Portsmouth

## FANTASIA

437 Hope St.  
Bristol  
253-2994  
Handicraft Gifts  
Home Accents  
Art Work Taken  
On Consignment

HOURS: TUES.—SAT.  
10:30—6:00  
SUN. 1—4

### FREE ROLLERSKATING

With the Rental of One Full Hour.  
The Second Hour is Our Treat  
With This Ad. Thru Oct. 30th.

**Get Rolling At  
WHEELS TO GO**



**SKATE NEWPORT**  
WITH OUR OUTDOOR RENTALS

### WHEELS TO GO

THE COMPLETE SKATE STORE  
PUTTING R.I. ON WHEELS

PEERLES 224 BELLEVUE AVE.  
WARWICK MALL NEWPORT  
738-7800 OPEN 7 DAYS 846-4588

## Are There Students

Interested In

## Flying to Florida

*During Winter Intersession or Spring Break?*

**Information on package rates, air fare, and  
rooms is available.**

It's not as expensive as you think, arrange-  
ments are being made, so don't store those  
summer clothes yet!

**Call 253-5488 11-1 or after 6**



# *Homec*

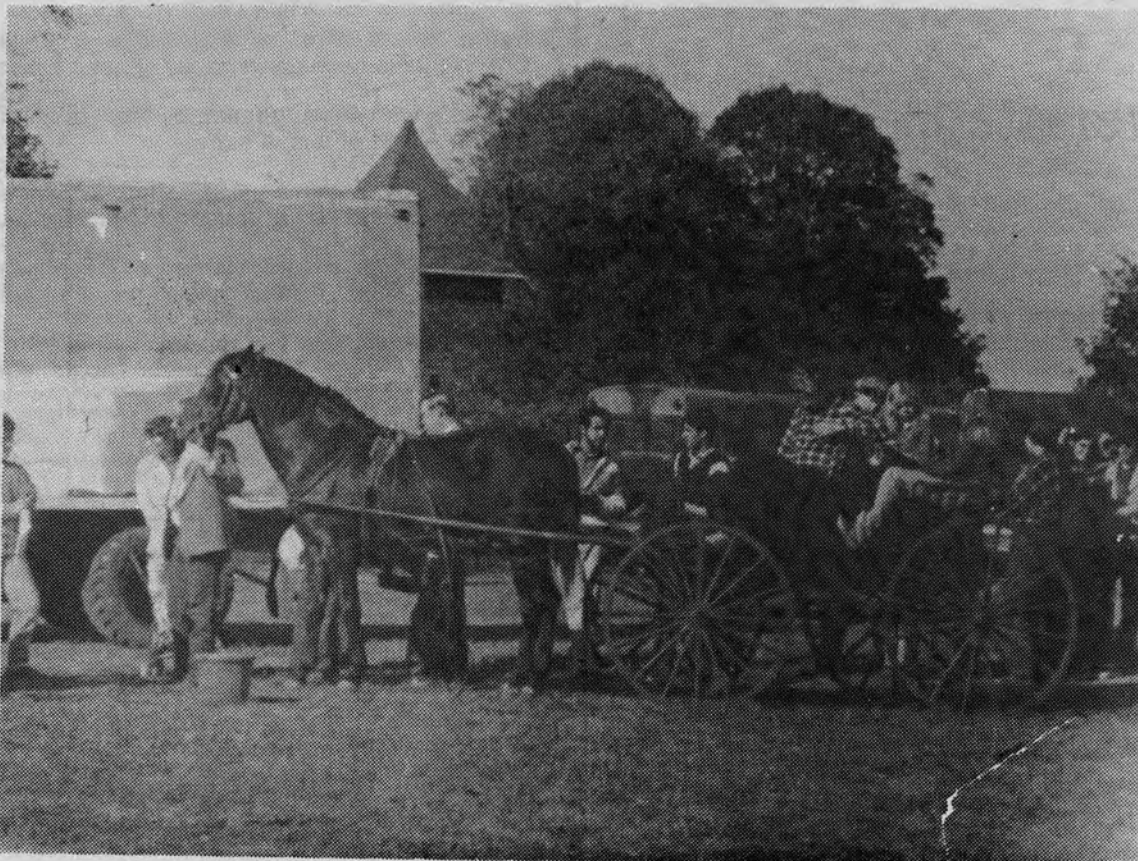
# 19





*oming*

**80**





# Profile

## Bittenbender joins cooperative education staff

A rare warbler has been attracted to a nook in the cooperative education offices at RWC, although he'd probably prefer a spot in the woods.

The songster is not of the feathered variety, but a man with the unlikely name of Carl Bittenbender, who was recently hired to head the engineering and natural sciences division of coop.

Bittenbender's last position was with the Sawyer School in Providence where he was assistant to the president for nine months. Due to budget cuts, there were changes in the administration staff and his position was "regretfully" eliminated.

"RWC will be an exciting challenge for me," Bittenbender said, although he has had experience with college before.

He was assistant director of admissions at Johnson and Wales and spent eight years teaching in public schools. He also has a marketing background.

"I'm applying my admissions experience to coop in reverse," Bittenbender said. "Instead of marketing the school to the student, I will be marketing the student to an employer." He also had placement experience at Johnson and Wales evaluating restaurants and placing students in them.

"Coop is terrific for students. It has great relevance for the future. If it had been available when I was going to school, I would have done it," he stated.

Although he has been at RWC for only a month, he is impressed with its unusual flexibility. "I've been to hundreds of college's for various admissions programs and the staid feeling I've found at many of them is not here. RWC is willing to try new programs."

I've found that the faculty here is younger and very dedicated to the students. That's not what happens at many institutions. The administration leads that philosophy in terms of creativity," Bittenbender said.

Coop had the idea of raising balloons to advertise the job program to RWC students. "We later rejected the idea because it was a gimmick rather than stating the real objective of coop, but the point is the administration was willing to consider it seriously."

Another innovative idea being discussed is a program that would place students in coop positions internationally in any discipline. "The administration could have rejected the idea immediately because it would cost too much, but they didn't," Bittenbender said.

Bittenbender believes his greatest priority is to reach the great number of RWC students who have never heard of or never participated in coop. They indicate interest on admission forms and then forget.

"Sixty percent indicated they like to participate in coop, then interest wanes," Bittenbender said. "We have not done enough in terms of a general knowledge campaign. Secretaries, security guards, anyone who affects the students should be aware of what we offer."

A Pennsylvania native, Bittenbender indicated his four years at Westchester College, which specializes in teacher education, to illustrate the value of coop. "A number of students went through four years, graduated, and found that little kids drove them bananas. All that education and money was wasted."

A coop job is paid and receives credit. The experience on a resume many times will open doors that

otherwise would be closed. The greatest value of coop however says Bittenbender is that it gives students "the opportunity to fail."

"Students may make mistakes but in the process they discover themselves and what they want to do. They discover what its like in the job market. Nothing is permanent. Students and employers are not bound. All perspectives are based on the real world."

Bittenbender is an authority on the value of a wide range of experiences. He is a scouting leader for teenage boys in Barrington and enjoys white water canoeing, camping, and hiking. "It gives me an opportunity to recharge my batteries," he said.

He also spent 14 years singing and acting professionally in nightclubs and musical comedies. "I have a Robert Goulet style." He performed in summer stock with Eva Gabor Howard Keel, and Dorothy Collins, "people most RWC students have never heard of," he joked. As assistant director of the Navy choir, he toured the US and appeared on the Mike Douglas and Johnny Carson shows.

"Anyone who has a gift should use it to help people whenever possible whether it be as diverse as sports or painting. Coop is all about sharing those gifts and having the opportunity to explore them."

He urges people to visit his office, and don't be put off by his name. "It's really very simple, but you can't imagine what people do to it," he said. He keeps a dingbat name file of the most imaginative misspellings; everything from bittenbeuber to henbender. "The one I like best" he said "is Bottleboober."



Carl Bittenbender

### Campus Paperback Bestsellers

1. **Sophie's Choice**, by William Styron. (Bantam, \$3.50.) Star-crossed lovers and the nature of evil: fiction.
2. **The Dead Zone**, by Stephen King. (NAL/Signet, \$3.50.) Terror tale of man who sees into future: fiction.
3. **A Woman of Substance**, by Barbara Taylor Bradford. (Avon, \$2.95.) Successful woman & her children: fiction.
4. **Class Reunion**, by Rona Jaffe. (Dell, \$2.75.) Four Radcliffe grads and how they fared: fiction.
5. **The Number of the Beast**, by Robert A. Heinlein. (Fawcett, \$6.95.) Space journey to other universes: fiction.
9. **Petals on the Wind**, by V. C. Andrews. (Pocket, \$2.75.) Children take revenge in horror sequel: fiction.
7. **Still Life with Woodpecker**, by Tom Robbins. (Bantam, \$6.95.) A sort of a love story.
8. **Shibumi**, by Trevanian. (Ballantine, \$2.95.) Intrigues of the perfect assassin and perfect lover: fiction.
9. **The Great Shark Hunt**, by Hunter S. Thompson. (Popular Library, \$3.50.) Roasting of America's seamy side.
10. **What Color is Your Parachute?**, by Richard N. Bolles. (Ten Speed Press, \$5.95.) Career and job guidebook.

Compiled by *The Chronicle of Higher Education* from information supplied by college stores throughout the country. October 6, 1980.

### New & Recommended

- Been in the Storm too Long**, by Leon F. Litwack. (Vintage, \$7.95.) Meaning of freedom to emancipated Southern blacks.
- Cannibals and Missionaries**, by Mary McCarthy. (Avon, \$2.75.) Insights on terrorism aboard hijacked airplane.
- Double, Double, Oil and Trouble**, by Emma Latham. (Pocket, \$2.50.) New York banker-detective foils oil caper.

Association of American Publishers

## WANTED

Students Interested  
in

Forming and Participating in the  
**New Dorm Committee**  
[formerly *Dormitory Government*]

Executive Board  
Judicial Board

And Dorm Rep.s Needed

More information in the  
*Student Senate Office*

Student Senate  
Dormitory Chairman  
Wally Ramos

# Club - news

## Writer's Block discusses creative writing and science fiction

By C.M. Fontaine

The scene was a typical dorm room, an informal setting with a small group of people lounging casually about. To look at this group it would seem there was nothing unusual going on. But, to listen in was another experience altogether. "I dug that book, the style was really intense, though thin." "Yeah, James, But isn't it the lightness of the book that made the style distinct?" This short dialogue is the sort of exchange of ideas that characterizes a

Writer's Block meeting. "It helps to break writer's block just to rap" Wayne, a member, commented. The group was basically formed for those interested in writing creatively, instead of writing straight journalistic material. Currently, the group is oriented toward science fiction, fantasy, and unusual concepts. The emphasis is on total originality of thought, although any topic is welcome. Besides exchanging ideas, books are exchanged to get each member acquainted with different styles of

writing. (Not to mention the fact that it saves considerable sums of money to the group). The Writer's Block group is tentatively planning to travel to science fiction conventions due to the large number of professional writers who accumulate at such gatherings. Another future possibility involves putting out a literary of fiction, poetry and their own views on life. Posters for meeting will be on campus, or call Cindy at 9794.

## Business Club urges new membership

New members are invited to join the Business Club, announced Club President Nancy Broadbent. Throughout the year, the Business Club will be sponsoring guest speakers, visiting the Commodities Market in Boston, and holding a Christmas dance. Club members receive a discount on club-sponsored events. The club meets every two weeks. Anyone interested should contact Nancy Broadbent; Vice-President, Cindy McNish; Treasurer, Richard Seagull; or Secretary Sue Casle for further information.

## Art club sponsors trip to New York City

The Art Club is sponsoring a bus trip to New York City on Oct 23. The bus will leave at 6:30 am for New York and will return back in Bristol at 12:00 pm. Anyone is welcome -- the first 47 to sign-up will go. The fee will be \$15 collected in advance. For further information call Kathy, 253-7432 or the Art Department.

ATTENTION: A model is available for sketching in the Art gallery every Thursday from 1 to 4 pm \$1 fee. ATTENTION: Important Art Club meeting Oct 17 at 1 pm in the art department. All are invited.

### Library Hours

Monday-Thursday	8 am- 12 midnight
Friday	8 am-4:30 pm
Saturday	1 pm-5:00 pm
Sunday	2:30 pm-midnight

watch for posted changes for holidays and exam periods

### THE PROVIDENCE JOURNAL

IS NOW AVAILABLE AT A REDUCED COLLEGE STUDENT SUBSCRIPTION RATE OF

Only **14¢** per copy!

For Complete Details Contact:  
Lynn Savage  
at 255-3186

### Julie's Spa

492 Metacom Avenue  
Bristol, R.I.  
253-9899

Orders To Go  
Breakfast & Luncheon  
Specials Daily

#### Breakfast Specials

7 days a week--6 to 11 a.m.

2 Eggs any style,  
Toast, Home Fries.....69

2 Eggs any style, Toast,  
Home Fries, Coffee, Juice 1.40

French Toast with Coffee 1.40

Pancakes with Coffee.....1.40

Waffles with Coffee.....1.40

## Aldebaran: college literary magazine seeks submissions

By Darlene Mikula

Aldebaran, the Roger Williams College literary magazine, is seeking submissions of poetry, prose, and art for its Fall, 1980 issue. Aldebaran is geared to beginning and established writers and artists who seek publication of their work. This year, the editors of Aldebaran are considering offering cash awards for the best poems, short story, and artwork published in the upcoming Fall, 1980 issue. Aldebaran began in 1971 to give students, faculty members, and other writers and artists outside the College community an opportunity to express themselves creatively through the differing genres. It also provides undergraduates the opportunity to edit and produce their own literary magazine. A reading staff, poetry, prose, and art editors are urgently needed. Students and faculty submissions of poetry, short fiction, essays, interviews, photography, and artwork will be accepted for consideration through Nov 1 for the Fall, 1980 edition. All submissions and correspondence should be addressed to ALDEBARAN, Box 790, Roger Williams College, Bristol, RI 02809

(Please enclose a self-addressed, stamped envelope if the manuscript is to be returned.)

## COLLEGE POETRY REVIEW

The National Poetry Press announces

The closing date for the submission of manuscripts by College Students is

### November 5


ANY STUDENT attending either junior or senior college is eligible to submit his verse. There is no limitation as to form or theme. Shorter works are preferred because of space limitations.

Each poem must be TYPED or PRINTED on a separate sheet, and must bear the NAME and HOME ADDRESS of the student, and the COLLEGE ADDRESS as well.

MANUSCRIPTS should be sent to the OFFICE OF THE PRESS.

### National Poetry Press

Box 218 Agoura, CA 91301




### Sit down and get into perfect shape.

At Command Performance we know the secret of a well-shaped haircut: adapt the hairstyle you ask for to the hair you come in with. That's also why our haircut will get you all the looks you're looking for. Shampoo, precision cut and blow dry for men and women. \$14. No appointment necessary, ever.

#### Freebies.

To thank our customers for making us America's #1 hair styling chain, we're giving our first 500 customers a free official CP frisbee with every carefree precision cut & blow dry and this ad offer expires 21-31-80




### Command Performance

for men and women

651 W. Main Rd., Middletown  
Route 114 (Next to Burger  
Chef). Open Mon-Fri  
9am-8pm. Sat 9am-6pm  
849-2886  
Also-perms, conditioning,  
coloring, frosting.

© 1980, FISCO

**Bristol Picture Frame Co.**  
 !!!  
**CUSTOM FRAMING**  
 !!!  
 Wood & Metal Stock Frames  
 Prints & Posters  
 Chop Service on Metal Mouldings  
**379 High Street You Assemble**  
**Bristol, RI** Mon-Fri 10-5, Thurs 7-9  
**253-7357** Sat 9-1  
**Stephen R. Mascena**

  
**Linden Gate Flowers**  
*and complements*  
**583 Hope St., Bristol 253-6010**  
**WELCOME CLASS OF '84!**  
**Mon-Sat 9am-5:30pm**  
**Fri evenings 'til 8pm**  
*Let us help you make your college years  
 as memorable as they deserve to be*  
**LARGE SELECTION OF CUT FLOWERS  
 AND DESK PLANTS**  
**Also wire service at your convenience for  
 those special occasions.**

## Peer Counseling

For someone to talk to in confidence about anything at anytime. We are a group of trained helpers under the supervision of the counseling center.

### Our names & contact places:

Cheryl Anderson Unit 12, rm 1214 255-3228  
 Diane Bernard 36 Third St., Warren 245-2086  
 Venessa Brown Unit 5, rm 516 255-3371  
 Ronita Holmes 36 Third St., Warren 245-2086  
 Sally Marx Third floor, rm 316 255-3405  
 Chris McCarty 62 Education Ln. 683-1714  
 Portsmouth

Kevin "Monty" Montgomery rm 0204 255-3227  
 Lisa "Rizzo" Rizoli Unit 12, rm 1212 255-3471  
 Marcia Shapiro Almeida, Apt. 326 253-6086

If you have trouble reaching us at the above numbers, leave a message at the Counseling center -- 255-2223, dorm 1, tower d.

## Placements News

Group meetings for seniors will be held on the following dates:

Natural Science, Thurs., Oct 9 at 3pm in Common Lounge  
 Engineering, Tues., Oct 14 at 2pm in Common Lounge  
 Social Science and Business Administration, Thurs., Oct 16 at 1:30pm in Common Lounge  
 Humanities & Fine Arts, Wed., Oct 22 in Conference, tower a.

## Faculty are Invited

MBA Forums are being offered to help students and working people to learn more about graduate management education. Prospective applicants will be able to talk with admissions representatives from MBA programs about admission procedures, curriculum offerings, financial aid and placement and career opportunities in management. Workshops will be held in Boston at Northeastern University, Ell Center, on Friday, Oct 31 and Saturday, Nov 1.

## Dates to remember in October

Thursday, Oct 16: A State Department Representative will talk about overseas jobs at noon in the conference room, tower a.  
 Thursday, Oct 23: Mr. Alec D Brown of Textron will talk about Interview Encounter. The RWC Business club is sponsoring this event. All seniors are urged to attend at 3pm in the Bay room.

## Nov on-campus Recruiters

November on-campus recruiters include *New England Telephone and McLaughlin Research Corporation*. December graduates can sign up in the Placement office.

## Job of the Week

RWC is seeking a *Sports Information Person*. Applicants must have full knowledge of all sports, as well as excellent communication skills. Very good salary. For further information, apply at the Placement office.

# Alcoholism and its abuse

By Nola Watson

The following information is not intended to encourage or discourage the use of alcohol. Instead, it is meant to clarify many unclear issues about alcohol use and abuse and alert people to avoid irresponsible drinking.

Students here at RWC live in an environment in which there is a heavy student emphasis on "social drinking." Probably each one of us know of at least one friend or acquaintance who either drinks excessively or does not handle alcohol well.

Yet, much of our real information about use and abuse of this popular "drug" is clouded in myth and hear-say. It is difficult to help those in trouble if no one has accurate facts.

An alcohol-troubled person is anyone whose quality of life is negatively affected by drinking in at least one or more of these four areas: 1 Social, 2 Physical, 3 Financial, and 4 Emotional.

Many people reject the term "Alcoholic" because it brings to mind a deluge of negative images -- the drunken old man lying in the gutter on skid row. The fact is that only 3-5 percent of all alcohol-troubled people fit that description.

Having trouble with alcohol is not only easier to admit to than being "alcoholic," it is also more accurate.

Alcohol problems can be solved. It is not necessary to wait for the person to "hit bottom" to start trying to help or find help. The earlier the "alcohol problem" is identified, the easier it will be to deal with it.

Let's look more closely at ways to identify problem drinking at any stage.

Alcohol is a problem if it interferes with one's SOCIAL life. If you, or someone you know on campus, has increased quarreling with family of

friends is withdrawing from others, lacks motivation, is irritable or having sexual problems - alcohol may be a problem.

Alcohol is a depressant drug which takes its toll on the entire body. Physical symptoms which follow need to be explored and may result from the use (or abuse) of alcohol: frequent colds and infections, bronchitis, malnutrition, exhaustion, high blood pressure, pneumonia, frequent nausea, frequent accidents,

sleep disturbances, abdominal dis-

tress (gastritis, pancreatitis, ulcers, diarrhea), weight loss or gain, blackouts or memory loss.

Problems with alcohol can have an adverse effect on the emotional state of the drinker. Although the immediate response to alcohol is stimulation, the central nervous system is actually depressed. Therefore the problem drinker becomes more and more depressed over time. Alcohol increases anxiety and contributes to low self-esteem.

Alcohol is also expensive. Problem drinkers are often affected FINANCIALLY as they miss classes, miss work days, and spend money on drinks instead of food. Some even lose necessary jobs or begin to find themselves unable to perform in classes.

Many professionals believe that alcohol problems result from learned behavior. Help is available in the community and on the campus.

If you have identified any of the social, physical, emotional or financial problems which have been discussed as relevant to you or someone you care about, now is the time to seek help or advice. Consider a talk with a health or counseling person on campus in the near future. Information is confidential.

# Health Service News: Toxic Shock Syndrome

By Kathy Flanagan  
 Health Service Staff

Toxic Shock Syndrome is a newly recognized illness, just identified in Colorado two years ago. A serious disease of unknown etiology, it affects primarily young women of child-bearing age who have been previously healthy.

Since January, the US Center for Disease Control in Atlanta has recorded 344 cases, including 28 deaths. All but 16 of the cases involved menstruating women, usually under 30 years old.

Toxic Shock Syndrome is caused by an agent of the common Staphylococcus aureus bacterium, often found in abscesses. It is believed that some women harbor the bacteria. It is then carried into the vagina during insertion of the absorbent "pluglike" tampons. An ideal breeding ground is created for the staph bacterium.

The initial symptoms of Toxic Shock Syndrome include fever (102-104), vomiting, diarrhea, and dizziness. Sometimes symptoms can be accompanied by a sore throat, headache and muscular aches.

These symptoms are followed by a sun-burn like rash with peeling of the skin, especially on the hands and feet. The disease usually progresses to hypotensive shock. (Sharp decrease in blood pressure). Symptoms of Toxic Shock Syn-

drome usually occurs during a menstrual period.

Studies have shown a definite relationship between Toxic Shock Syndrome and the use of tampons. A study of 42 Toxic Shock Syndrome patients done at the Disease Control Center in Atlanta showed that 71 percent of those women used Rely tampons.

The effectiveness of the Rely tampon creates an ideal breeding ground for the bacterium. Rely tampons have been recalled from the market and the FDA issued a strong warning against its use.

It is extremely important that all women be aware of the causes and symptoms of Toxic Shock Syndrome. The FDA is issuing warning labels on all tampons informing the consumer that they may cause Toxic Shock Syndrome. The more absorbent the tampon - the more dangerous it is.

Federal Health officials are suggesting that women not use tampons or used them intermittently. Avoid using tampons during the night. If you are menstruating, using tampons, and you have a high fever - remove the tampon and seek medical attention.

## Bojangles by the Surf

under new management

Monday-Friday  
4-8:00p.m.

HAPPY HOUR

Monday

BEAT  
THE CLOCK  
starts at 8:30p.m.  
\$.50 bar &  
domestic drinks

Wednesday

9-11p.m.  
LIVE  
ROCK & ROLL  
\$1 drinks

Thur., Fri., Sat.  
8-9:30p.m.

OPEN BAR  
\$3 cover  
live entertainment  
at 10:00p.m.

Sunday

BEER BLAST  
\$3 - all the draft  
you can drink

see you  
there

**MUSIC BOX**  
**NEWPORT'S LARGEST  
 SELECTION OF  
 RECORDS, TAPES  
 POSTERS, T-SHIRTS**  
 Ticket agent for RI Concerts  
 Open til 9 PM  
 160 Thames St.  
 Mon-Sat  
 Newport  
 Sunday 11-5  
 849-6666

# Entertainment

## Southern Southpaw a success despite ...

By W.A. Collette

When Southpaws' Charley Doherty was asked, what immediate goals the band had for the future he said; "Mainly staying alive," and that's just what they did and then some in their successful performance on Sept 26 at RWC.

The band played to an appreciative if not wildly enthusiastic crowd which seemed only to spur them to new highs.

The eight man band although relatively new in terms of being around in the rock music scene (only three years) belted out tunes with incredible energy and awesome output.

Southpaw opened its show at 9:40 playing an older tune called Bayou to a small but passive audience. But from the moment the band took to the stage and summoned up those first harmoniously magical chords they were definitely hot, and within twenty minutes the crowd had swelled considerably.

Southpaw was received well by the RWC crowd as they tore through their line-up of mostly good southern rock type tunes for the 3 1/2 hour show. Also presented were such chart topping tunes as *Cocaine*, done by Eric Clapton, and Linda Ronstadt's ever popular, *Living in the U.S.A.* Both were excellently done.

The band's style, which was faultlessly perfect in the post-Skynard era took the crowd out of its seat and onto the dance floor time and again throughout the night.

A special favorite with the crowd was a little known tune called, *Disco Sucks*, which obviously was reflective of the southern rock mood created by the band, but extended jam on *Orange Blossom Special* was the real show stopper.

Besides being energetic and upbeat, Southpaw gave a spirited lively show filled with dialogues with the audience and clear concise under-

standable vocals.

"Sure as hell is good to be here in the cafeteria, shouted Chuck Doherty at one point early on in the show. It seemed like Southpaw would never stop gaining in momentum.

From the wild wailing saxs of Steve LeClair and Bill Gascoyne, and the ripping harmonica playing of Ron Sloan come part of the bands innovativeness that could lead to big things.

Of course, the other members of Southpaw are not to be overlooked for their more-than-capable musical talents, such as Bill Nadeau's superb drumming, Charley Doherty's vocal ability, or the guitar playing of Doug Moore, Nelson Checkoway, and the bands assist John Freeman.

Surprisingly the band only took two short breaks in the time they played, which left time to ask a few students what they thought of the

band. "Really rockin'" stated George Cruz, an upperclassman here at RWC with conviction, to which he added; "This band is A1 with me!"

Everyone who attended the show definitely thought they'd gotten their money's worth, or at least all

of the people I'd talked to did.

Southpaw closed its show with the tune *Rambin Man* which left the crowd amply satisfied. Although the band hadn't the time to do an encore, Southpaw never the less left the RWC audience with their paw prints deeply embedded...

## Coffeehouse Corner

**GOTTA SING:** A musical revue directed by Diane Crowell. Presented at RWC Coffeehouse Theatre on Oct 3. Choreographer and Set Designer: *Robert Crowell*. Lighting: *Louis Moquet and Jeffrey Hudgins*. Cast: *Dawn Bates, Laura Bentubo, Karen Bickford, Robert Crowell, Joseph Dignoti, Wayne Grant Mark Lauzon, and Michelle Napolitano.*

### "GOTTA SING"

By Nicholas Cameron

"Gotta Sing," the Theatre Department's traveling musical revue, under the direction DELETED made its debut October 3 in the Coffeehouse Theatre.

The revue, under the direction of Diane Crowell, will travel throughout Rhode Island and Massachusetts, and will play to audiences in need of musical entertainment.

The show has three acts, which encompass a large range of music, from a "Sentimental Journey" through the 1940's to a collection of numbers from "The Wiz" to a big city medley, which concludes with

New York," a real show stopper.

All performers put their whole heart into the show. In numbers such as "Hey there good times" and "Let's here it for me," this apparent. There isn't a tedious moment in the show.

There is considerably more dancing in the show than in most revues; but Robert Crowell, the choreographer, makes every number as graphic for the audience as possible.

The set, also by Crowell, is as exciting as the performers themselves, which is a definite plus. The lighting by Louis Moquet and Jeffrey Hudgins provided every necessary atmosphere in the show.

The performance last approximately an hour and forty-five minutes.

The set, also designed by Crowell, is as exciting as the performers themselves, which is a definite plus. The lighting by Louis Moquet and Jeffrey Hudgins provided every necessary atmosphere in the show.

The performance last approximately an hour and forty-five minutes. "Gotta Sing is an exciting display of song and dance.

## ... changes in the band

By W.A. Collette

"Southpaw played in our school cafeteria Sept 26 to an enthusiastic crowd of southern rock fans. The band, which has eight members, has little difficulty in capturing their audience early in the show.

Before the show, at a moments notice, the band granted the Quill a brief interview with lead vocalist Charley Doherty and John Freeman the bands talented bass player.

As I ARRIVED, A TALL STALKY FELLOW WITH A DARK BEARD AND A COWBOY HAT STOOD BY THE Student Center door trying to order his dog into one of the band's trucks, this was Charley Doherty.

**QUILL:** Can I ask you a few questions? I'm with the school paper.

**CHARLEY:** (cheerily) Sure. (At this point we exchanged the usual formalities of introduction, he is jovial and very cordial, a likable sort of person.)

**QUILL:** Southpaws been around for a while...

**CHARLEY:** About three years.

**QUILL:** By this time the band must have some immediate goals for the future, would you mind sharing a few of them?

**CHARLEY:** Well, right now the bands going through a change. We're tak'in on new people ... for a concert-type setup ... and we've got a forty-five comin up.

I guess mainly staying alive, although it would be nice to go on the road.

**QUILL:** How about any major changes in the band or its line-up, most bands do have at least some changes in a three year period.

**CHARLEY:** NO we've had changes in guitar, added a harmonica, couple of sax, and the drummer also is new. Basically same songs, new people ... Southpaws been together for about three years, but the band your seeings tonight's been together about three months. Only three of the members of the

original band are left, on bass, pedal stool guitar, and vocals (Charley).

(He adds with a sigh) So many gigs, its hard to get rehearsals down.

**QUILL:** Yes, I can imagine. But every band has that one favorite artist who plays a part in shaping their music, or at least has some effect. To put it straight, where does Southpaw music originate?

**CHARLEY:** Well, I come from Tennessee and started the band with two other guys, from Virginia and Florida. It's given the band strict Southern roots. Bands like Commander Cody, The Rythem Aces, Van Morrison and of course Lynard Skynard, I'd say effects our music most.

(At this point I couldn't resist asking that one dreaded question that every so often pops up to haunt an interviewed musician, the projecting of future music trends.)

**QUILL:** As an upcoming artist what do you think the music trends are going, and where does Southpaw fit in?

**CHARLEY:** (The first serious look of the night crosses Charley's face as if; **OF ALL THE QUESTIONS TO ASK,** is running through his head.)

(Hesitating) It seems that major record companies are behind the New Wave sound. Although there is an upsurge in country rock ... people are getting away from Disc ... I'm hopin its just a fad (referring to New Wave). This is where it's at! (He looks over his shoulder at where the rest of the band is setting up.)

**QUILL:** You really think so?

**CHARLEY:** Yes.

**QUILL:** Can I quote you on what you just said about Disco and New Wave?

**CHARLEY:** (smiles as if he wished he hadn't said quite so much) Uh ... no, I don't think so. (Theres a long pause) Awe what the hell, you can quote me.

**QUILL:** Thanks. I'm curious

though, where did the band get the name Southpaw? It seems to fit well as a name to fit well for a southern rock band.

**CHARLEY:** When we started half the band was left handed, and I had a tee-shirt with Southpaw written on it.

**QUILL:** What's like on the road?

(At this moment John Freeman walks over to where we're standing) **CHARLEY:** (edging off) This is the man to talk to ... right here (he pats John on the back and grinning from ear to ear strolls off.)

**QUILL:** What's it really like to travel on the road with a band like Southpaw?

**JOHN:** The band hasn't done a whole lot of road work. But I'd call it *GRUELING*, it's a full schedule. The band has played in all the southern New England states. We'd like to tour more ... (he looks toward the stage)

**QUILL:** Well, I guess that's about it, and thanks for the interview.

**JOHN:** (jokingly as he walks away) I hope you write only good things about us.

(I only smile as he rejoins the band. The show began a few moments later, and what a show they gave!)

## NELLA'S CLOSET

Junior Apparel  
Designer Jeans  
by Bon Jour,  
Calven Klein

Fashions by SPRIT  
10% off with college I.D.

418 Hope Street, Bristol  
253-2740

### PM TAVERN

Fine Food & Spirits  
PM Tavern Welcomes RWC  
Students Back

Happy Hour: Mon.-Thurs. 2-6  
Kitchen Hours: 11:30am-11:30pm  
Fridays: Fish & Chips  
ORDERS TO GO  
Located at 5 John Street  
Bristol, R.I.

### HARPO'S NEWPORT JAZZ CLUB

TONITE	Blushing Brides
FRI	Sonny Terry I Brownie Mcgee
SAT	Blues John Hammond & Glen Phillips Band
SUN	Neighborhoods Plus Hangers

### NEXT WEEK

THUR	The Urban Guerillas
FRI	Aztec Two-Step & Otis Read
SAT	TBA
SUN	Rock/New Wave Annie



### Announcing the low maintenance haircut.

At Command Performance. It continues to help your hair hold its shape even as it grows. Because the hairstyle you want is adapted to the hair you have. It's not only easy to take care of. It also makes it easy to get all the looks you're looking for. Shampoo, precision cut and blow dry for men and women. \$14. No appointment necessary, ever.

### Freebies.

To thank our customers for making us America's #1 hair styling chain, we're giving our first 500 customers a free official CP frisbee with every carefree precision cut & blow dry and this ad. offer expires 12-31-80



651 W. Main Rd., Middletown  
Rout 114 (Next to Burger  
Chef) Open Mon-Fri  
9am-8pm, Sat 9am-6pm  
849-2886  
Also-perms, conditioning,  
coloring, frosting.

# Entertainment

## PERSONALS

**HEATHER:** My place or yours--  
[we're close enough]

**KAT:** Is it true you eat alphabet  
soup in the morning? \$0

**XO?OX** what does A-36 mean any-  
way? signed STL, DGN

**KYLE:** Meet you under the bridge  
the next foggy nite, come alone,  
I.L.U.

**BOBO:** I love ya! But can we get  
together earlier? I have 8 o'clock  
classes!

To my Shoobs in Unit 6. Where's  
Simon? guess who

To all the cheerleaders, especially  
Linda, Karen, and Patti. Thanks a  
lot for all your help in giving me my  
wings Love Roger.

C.C.-"please" I want to play with  
your blocks!!" Andy

**DJB:** Miss you terrible. Soon in  
Mexico, someday in Salem. KMC

**BETH:** Have you been mud sliding  
lately? Anonymous

**PATTY:** Who are you wearing  
those designer jeans for?

**BULLY BULLY**

**LOU:** I heard Boston Police found  
your car. Is that true?

**S&M JONES:** Found anyone to  
walk on your back with hip bots yet?  
B&D Smith

**PINNIPED:** I love you kitten

**TINK:** Can I squeeze ya til you  
fart? Love ya Baby cakes

**DORIAN:** Maybe fate will make  
my secret rendezvous come true.  
Love your roller buddy

**JOE:** You are a helluva guy. Luv a  
friend

To the roller disco queen--well it  
figures! **BULLYBULLY**

**WOJIE ON WHEELS:** Happy  
motoring! Love, the Burper

**BONER:** I wish something else was  
as big as your nose! Andrea

**HEY JANINA:** Nice Nortons!!  
B.M.

**HEY FISH:** 14 will get you 20.  
Unit 1

**BOB (Ralph):** How's Hoover do-  
ing? She looks well.

**MARK:** Do I see knives in the  
future. Unit 1

**PATTY:** When are you going to  
come down and visit us in 12? You  
always wanted a blonde with blue  
eyes.

**SCHEMER:** How many guys go in  
the closet when Drew comes  
home? The Girls

**HEY CAROL:** Reunited and it  
feels so good!!!

C.C. "The man with the 3 hour  
dinner and you don't even like the  
food."

**CHERYL & DIZZO:** If you are  
going to say C.C.C. you had better  
bring some my way

**BETH:** Next time you go mud-slid-  
ing bring your own change of  
clothes. signed, one who knows

Unit 1 ... The B.C. Raiders will  
strike again -- when you least expect  
it, expect it. B.C.R.

P.S. October 31st, **TRICK OR  
TREAT!!**

**HEY JIMMY** was Ginina as good  
as Tammy was. Unit 1 Gang

**NICKIE:** Did those bars get you up  
in camp? A Friend

**CHRIS:** can you burp a Fidudla?  
Miss Moo Moo 1980 ? Buns

**HEY PATTY:** What about when  
Drew comes back? signed one of his  
European blondes!

**HEY GOMER:** Carol don't want it  
from a **REBEL** with red hair. give  
up Nick (Unit 1)

Margo: Always, always, always.  
Bordeaux

**MIMI:** Let's go chinese winkers  
and co.

**Madaretto Matt:** We think you are  
turning...:

"I gotta call Tokyo" Brill  
RWC Box 665 1987;80: What will  
you do now? Apply 711 . Another  
Star

Wanted assassin: dispatching skills  
useful bt not necessary, free train-  
ing. Call 245-7656

Ginger: May I have the next dance?  
Fred

Class of '84: Welcome to the  
animal farm. George Orwell

Jeff T: You tested the system and  
lost. Face It.

**KIM:** I'd lke to father your  
children. P and J.

**JIM:** Why do you think farts are so  
funny? Love, Body Lingo

**TINK:** What's thick and gooey and  
goes squish when you bite it?  
Babycakes

Linda F.: F is crazy

**WILKIE:** Is it true you made Frank  
Purdue bald? The Bald headed  
chicken flucker.

Dear fourth floor: Beware, the  
bomb will fall again. The mad  
Bomber

**DEEP THROAT DON:** You re a  
better kisser than Linda Lovelace.

**SIGNED: THE HOMO CLUB**

**CATHY, JANET, MARSHA, &  
ANNETT:** Thanks for b ab ysitting  
this weekend for me. SAS II

Hey Don: Wanna have sex?

**RENE:** It's about time you re head  
of something.

**STEVE H:** I hear you're the new  
Glenn M?

**JOEY PIZZA:** I hear you're the  
new Tony G?

Carol: You are such a hunk  
Farinaz , Mecky, Soheila. : Merci!  
a lot, really G.M.

Gimpy: It serves you right for not  
wanting to go skating with me.  
Barb

Dear Mega: Spread it around,  
Melanie is getting tired. The other  
guy.

Happy Birthday Lisa and Dorian  
from the gang

Sue: Are you sure a guard helped  
you home and not a real live football  
player?

Fourth Floor Girls: Drop the  
boz os at home and take a ride on  
the wild side. The Stud

**CATHY & BETSY:** Keep your  
collars up. **SIGNED: MR PREP  
PIE**

**DR DEATH:** I hear Pat is running  
for president. **SIGNED: BALTI  
MORE COLTS**

**MARTY B:** Thanks for coming to  
the bomb scare last Saturday night.  
**SIGNED: UNIT TWO**

**CATHY, JANE, MARSHA & AN  
NETT:** I don't miss you. **SIGNED:  
BELUSHI**

## 6,000 WAYS WE HELP STUDENTS GO TO COLLEGE.



Army ROTC has more than 6,000 four-, three-, and two-year scholarships in effect at any given time. And, each year, hundreds are available for which your students can compete.

Scholarships cover tuition, books, and lab fees, and pay students a living allowance of up to \$1000 for each academic year the scholarships are in effect.

Our four-year scholarships may be used at 279 colleges and universities across the country. Three- and two-year scholarships may be used at more than 500 additional institutions. Schools where students can earn both a commission and a college degree.

So if you'd like to see more of your students headed for college, show them the way. Army ROTC.

For more information, write: Army ROTC, Box 7000, Larchmont, NY 10538.

### ARMY ROTC.

CALL PROVIDENCE COLLEGE ROTC

865-2471/2472



Keep Red Cross  
ready.

# EDITORIAL

## RWC: An experiment in social living

A college is a small community unto itself. It is governed by its own laws and social codes. Being so small and secluded, RWC is a perfect example of an isolated society.

Some say a college is an asylum. A zoo where students are kept until they become rational, responsible adults.

A college can be a training ground, not only academically, but socially. If students cannot learn to live together amicably in such a cushioned atmosphere, then there is no hope for a peaceful, ordered society in the future.

The pitfalls of living in this carefree, wellordered environment are that a student does not have to make any decisions; he does not have to defend any rights. It is very easy to slide along without making any commitments.

College is, however, the perfect place for experiments in government. Youth are creators of some of the most brilliant ideas and most willing to put them into practice. RWC is comparable to a test tube. Chemical reactions within one can produce a tougher, more viable substance, or they explode.

RWC has a new disciplinary system. Its success depends on responsible student participation. Here is a great opportunity to prove that rowdy, party-loving delinquents can make a commitment to govern themselves.

Are RWC students mature enough to handle it? Hopefully, the majority are. Some, however, will only feel punished if they are slapped on the wrist with a ruler by a gray-haired authority figure.

# Letters To The Editor

## Flag incident destroys goodwill

To the Editor:

Just a note to express some pent up feelings. After reading last night's paper, I am appalled (as I have been many times before) at things that go on around here.

Is it any wonder why the townspeople feel the way they do about the College? An occasional prank is one thing but 32 flags??

This all took place right in my area of town, one incident across the street from me. I can't believe that the College would have the gall to say to these people that the students will not be punished, but if they do it again they will.

This town may not be the greatest around but the people are a proud people. It gives one a thrill to wake up and see the flag across the street waving in the breeze, or to ride

down Hope Street and see the flags proudly displayed in front of the homes.

But it is a heart-sickening feeling to realize that you do not see these flags because they have been stolen. People of this town have had their rights violated by a bunch of College students who think it was "fun and a challenge".

The Bristol Police Department had men tied up investigating 32 incidents of stolen flags, and all we can say is we are sorry and if it happens again...

There was a time when I tried to tell my neighbors that we really have a good group of students, much better than the students of the late sixties and early seventies that the townspeople were actually afraid of.

But, no longer do I try to say

anything. I am embarrassed by the students and ashamed of the things that go on and the way the College tries to "relate" to the town.

This last incident of the flags I feel is a real slap in the face to the community and the fact that the students are let off free just confirms the feelings of these people that we have a don't care attitude in this place.

I just had to get this off my chest. As a mother of five children who has worked hard to teach them right from wrong, I just cannot believe the way young people today are allowed to run all over people with no respect for rights of others.

Signed,  
Eleanor Lowe  
RWC Staff Member and Bristol Resident

The Student Senate would like it known they allocated \$50 to replace a flag that was ripped during the theft.

## You want me to park where?

To the Editor,

My question for this week involves a much asked but never answered question, "where am I going to park?"

Many rumors of additional parking have circulated for years, they remain just that ... rumors.

The first and most popular one is to pave over the pit. A dorm may go up in that spot so that's not really feasible, I can see that. The new gym is supposed to have additional parking, I guess I can believe that too.

What happened to the one that the road would be widened from the Physical Plant down to the end of dorm 2? This is one that always sounded good to me. Widening of the road would make it possible for angle parking in many spots, thus adding many new on-campus parking spaces.

My final comment on parking

brings me to the very first edition of this year's Quill. It was mentioned on page six that 75 on-campus parking spaces were added for this year. Maybe I'm naive, blind, or a

little of both, but where are these 75 new spaces? Did they push the weeds back in the Pit and extra ten feet?

signed: Parking in the Rear

## Quill

The Quill is published every two weeks during the academic year. It is distributed free to all RWC students; mail subscriptions cost \$5.00 to cover postage and handling.

The Quill is located in the classroom Building, CL 126. The mailing address is:

*The Quill*  
Roger Williams College  
Bristol, RI 02809  
Telephone: [401] 255-2200

The deadline for all advertising is Thursday at 5pm a week before the

issue comes out. Advertising is sold at the rate of \$2.70 per column inch. A 50 percent discount is allowed for all on-campus activities. Personals are free to the college community.

The Quill is not responsible for any errors in advertising and will not provide financial reimbursement. The Quill will reprint the part of the ad where a mistake was made.

The deadline for news copy and letters to the editor is Tuesday before the issue comes out.

## Quill Editorial Policy

The Quill, as the sole voice and means of community communications, reserves the right to express opinions. Therefore, the Quill Editorial Policy is as follows:

- 1) Editorial opinions, and only editorial opinions, shall appear on the editorial page(s).
- 2) All unsigned editorials shall represent the opinion of the Editorial Board of the Quill, and therefore the opinion of the Quill.
- 3) Signed editorials and commentaries shall represent the opinion of the writer.
- 4) Although the Quill recognizes the obligation to use fair and responsible editorial judgement, under no circumstances should opinions be regarded as fact.
- 5) The Quill recognizes the responsibility to print opposing viewpoints as "Letters to the Editor" and/or "Commentary".

The following shall be the policy regarding "Letters to the Editor":

- 1) All letters must be typed or printed (double spaced).
- 2) The Quill Editorial Board retains the right to not print or edit based on space limitations and -- or libelous material.
- 3) All letters must be signed.

The Quill Editorial Board urges all individuals who feel they have something of value to say to the College community to speak out and voice their opinions publicly. Constructive change can only be brought about through communication.

## QUILL STAFF 1980/81

EDITORS	REPORTERS	BUSINESS
Editor-in-Chief <i>Dawn Schauer</i>	<i>Mark Lauzon</i>	Business Manager <i>Cathy Clark</i>
News Editor <i>Pat Forte</i>	<i>Bob Crowell</i>	<b>PRODUCTION</b>
Administrative Editor <i>Duane Wright</i>	<i>James Hennafield</i>	Layout Design <i>Kimberly Tinkham</i>
<b>ASSOCIATE EDITORS</b>	<i>Kimberly Tinkham</i>	<b>GRAPHICS</b>
Photography Editor <i>Kathy McIntyre</i>	<i>Bill LeBlanc</i>	BAG
Entertainment Editor <i>Chris Morelli</i>	<i>Wayne Collette</i>	<b>CIRCULATION</b>
Sports Editor <i>Jeffrey Tucker</i>	<i>Ted Sprinkle</i>	Circulation Manager <i>Ray Perry</i>
photographers <i>Mike Mintz</i> <i>Dennis Roberts</i>	<i>Lisa Carson</i>	Circulation Staff <i>Ann Blodgett</i> <i>Paula Andrade</i>
	<i>Eric Godin</i>	
	<b>ADVERTISING</b>	
	Advertising Manager <i>Cris Conti</i>	
	Advertising Representatives <i>James Long</i> <i>Larry Beck</i>	

# Sports

## RWC Soccer Hawks win over Franklin Pierce

By Ted Sprinkle

Despite a rather slow start, the Hawks won another hard-fought victory Sept 30 over Franklin Pierce College. Although the outcome of the game was unpredictable, until the final whistle, the Hawks finally pulled themselves together to prove their superiority.

The first half of the game looked like little more than two teams practicing together. Although the Hawks dominated the play, they did not take advantage of all the possible opportunities they had.

Very few of their shots were on goal and the few that were could hardly be described as dangerous, much less threatening.

The inefficiency of the first half was due to players bunching around the ball, resulting in a mass state of confusion. Franklin Pierce finally took advantage of this confusion when goal-keeper Zanna Laisu dropped the ball and the defense could do nothing more than watch the ball roll into the net. Franklin Pierce seemed to have gained an edge over the Hawks.

After the ten minute half-time however, the team in the RWC uniforms did not even vaguely resemble the team that just walked off the field.

As the threat of a loss awoke the Hawks, Franklin Pierce began to feel the pressure of a determined offense. Again the Hawks dominated. After constant threats to the weakening defense of Franklin Pierce, the Hawks dazzled a confused opponent in much the same fashion that had just penetrated the Hawks' own defense. Ken Wilson took advantage of a stray ball to even the score.

The Hawks began to outplay

their opponent with more confidence. With the close of the game at hand, Coach Frye began to substitute his front line. Five minutes after coming into the game, Reuban Morales scored the winning goal through a beautifully executed free kick inside the penalty box of Franklin Pierce.

The ball was deflected off the line of Franklin Pierce full-backs, apparently effectively. However, as the goal-keeper relaxed, Morales, with lightning speed and power, blasted the ball into the net of the

unsuspecting team.

The Hawks ended the game with a 2-1 victory over a bewildered Franklin Pierce soccer team.

The Hawks ended their week with yet another shut-out victory over the University of Massachusetts, 1-0. Mike Sylvester scored the only goal giving the Hawks an impressive mid-season record of 6-2-0.

The Hawks face Salve Regina on Oct 6, and if they continue to play with confidence and unity, they can expect still another victory.

### The Tavern

SUN. thru THURS. NIGHTS

10 oz. DRAFTS .40

PITCHER 2.00

Vodka Drinks 1.00

**HAPPY HOUR EVERYDAY  
FROM 12 Noon 'til 7 P.M.**

**3 Memorial Blvd.  
Newport**

**847-7789**

### MED' BIKE SHOP

New & Used  
Bikes For Sale  
Trade-Ins Welcome

**10 PERCENT DISCOUNT!**

With College I.D.  
On Sales And Repairs

629 Metacom Avenue

### Baseball finishes fall practice

The Fall Program included three or four practices a week and a schedule that included three or four inter-squad games as well.

All veterans and interested candidates will resume workouts around the second week in February in preparation for a big spring schedule. After finishing with a 9-7 District 5 record two years ago, the Hawks dipped to 6-8 last season. The overall record was a disappointing 7-14. Bill LeBlanc, one of the Hawks co-captains last year will team up with Steve Koertje and Bob Collamore as part of a tri-captain set up for the upcoming season.

Coach Ray Cordeiro will largely depend on the bats of Mark Johnson (.375) and Vince Boni (.300), and

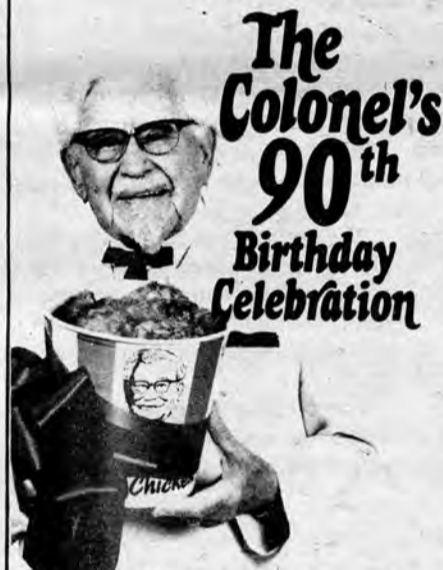
the arms of Pete Waters (22 strikeouts) and Jeff Cohen (appeared in 7 games).

Other returning veterans working out to make this years squad are outfielder Jim Bezner and Norb Heil; 3rd baseman, Joe Caggiano; catcher, Eric Scheneck; 2nd baseman Dave Anderson; and pitchers Dan McCarthy and Charlie Dobbins.

Two years ago the team missed the District 5 tournaments by one game. Despite a fair record last season they only missed the tournaments by two games. The Hawks hope that the combination of a strong returning veteran crew and the help of new freshman candidates will finally push RWC into a District 5 tourney bid next spring.

### KENTUCKY FRIED CHICKEN

651 Metacom Avenue  
Warren, R.I.



English Style Fish & Chips  
Stuffed Quohogs  
Fresh Fried Clams  
Fresh Fried Scallops  
Shrimp Dinners

**DRIVE THRU SERVICE**

#### 3 Piece Dinner

- Includes
- 3 Pcs. Chicken
- Mashed Potatoes with Gravy
- Cole Slaw
- Roll

ONLY \$1.90

WARREN STORE ONLY  
with this Coupon  
expires 10-30-80

A UNISEX SALON

Specializing In Precision Cuts

BEAUTY

*La Castilian*

BOUTIQUE

498 METACOM AVE.

253-4433

Proprietor

NANCY MIRANDA

REDKEN

### Maximillian's Discotheque

Ultimate in Disco

Two bars to choose from  
Game Room

Overlook Bellevue Ave. from  
large Glass Sliding doors

Fog machine

Light

★ Proper Dress Required

**108 WILLIAM ST.**

**NEWPORT, R.I.**

**849-4747**

NO COVER WITH COLLEGE I.D.

### AZZOLINA'S PIZZA

Sold Exclusively At

### The Portsmouth Dairy Bar

IS PLEASED TO ANNOUNCE

DELIVERY SERVICE TO ROGER WILLIAMS COLLEGE

We deliver 3 times nightly to you: If anyone is interested in being a representative and earning a commission, call 683-1918.

TO RECEIVE YOUR PIZZA DELIVERY AT

6:00

8:00

10:30

YOU MUST ORDER BY

5:15

7:15

9:45

For the convenience of campus delivery, you pay the LOW PRICE OF \$1.50 FOR DELIVERY SERVICE! How can you beat that in these inflationary times? AND, if you want to pick up the pizza yourself, we're only 7 minutes away from you! You'll save the \$1.50 and pay only for the pizza!

We also have a full line of grinders and sandwiches.

**SPECIAL: ORDER 5 PIZZAS -- GET FREE DELIVERY!**

1324 WEST MAIN ROAD

PORTSMOUTH

1-683-1918

Take a right after Mount Hope Bridge -- Go to the first set of lights --

Take another right -- Go about 2 miles down West Main Road -- We're across from Melville School.

# Sports

## Homecoming lucky for soccer

By Ted Sprinkle

Homecoming Day, in a magnificent display of unity and team effort, the Hawks crushed Curry College, 3-0.

The first half of the game gave Curry no chance what-so ever. The Hawks only lost control of the play twice. From the moment Curry kicked off, they saw very little of the ball. In fact, they could only break through the Hawks' defense twice, and both shots were stopped dead by the hands of goal keeper Zanna Laisu.

The Hawks managed to shoot 28 times. The Curry goal keeper was faced with shots from everywhere; inside and outside the penalty box, high passes from each corner, low powerful shots driven at the goal, soft chips that floated past the defense -- the Hawks utilized every available opportunity.

Finally, after 17 minutes of constant effort, Bob Collamore passed the ball to perfectly positioned team-mate Ken Wilson, who drove the ball into the lower left hand corner of the goal, leaving the stunned goal keeper still on his feet.

The Hawks' offensive battle was aided constantly by half-back Tony Tribelli. When necessary, Tribelli would assist the full-backs, but more often he set up Kevin Dolan with long threatening passes through the Curry defense.

also playing an important role in the Hawks' victory was Chris Politt. Politt effectively took the ball down the right wing to set up either Ken Wilson or Mike Sylvester (both of whom harrassed the goal keeper with constant shots at any available chance).

The second goal for the Hawks came twenty minutes after the first. After non-stop attacking, the Hawks broke through the Curry defense (the result of a perfectly executed triangle play down the right wing) and Wilson again left the goal keeper helpless.

A major factor in the success of the first half was the team effort displayed, and the constant support of the substitutes. Al Moran came off the bench several times to recharge the mid-field strength with his fresh speed and agility.

The second half of Saturday's

game was somewhat less impressive. Perhaps a surge of over-confidence caused the sloppy plays, but whatever was responsible, the Hawks had to fight to stay in control.

Although the Hawks out-shot Curry by 23-7, Curry did, with surprising frequency, break past the mid-field to battle the Hawks' defense. In fact, the Curry offense managed to get seven potentially dangerous shots on goal. Most of these seemed to be drawn into the capable hands of Laisu, but one high shot, aimed at the corner of the goal, resulted in an over-head save that brought cheers from the crowd.

The key to the Hawks' defensive power was Daril Godinez. Most of Curry's threatening efforts were ended by Godinez. Inevitably he would clear the ball so well that it turned a dangerous situation into an offensive opportunity for the Hawks. It was such a play that led to the third goal.

After a flurry of offensive attacks by Curry, Godinez cleared the ball to Sylvester who, in turn, broke away from the defense and passed the ball to Wilson. Ken Wilson chipped the ball with incredible ease over the goal keeper, then headed the ball into the corner of the goal for his third goal of the day.

The Hawks' efficiency was highlighted by the strong individual efforts of full-back Mark Witherell, who helped to keep the Curry offensive spurts to a minimum; Kevin-Dolan, who continually lead successful plays past the Curry defense and Mike Heston who stopped many Curry breaks almost as soon as they occurred.

The most impressive aspect of Saturday's game was the team work of the Hawks. Although more on the field communication was necessary, such a team is always the hardest to beat.



RWC Soccer Hawks victors over Curry College.

## Ultimate frisbee competes

By Bob Jameison

The New England Frisbee Invitational Tournament was held last weekend on the campus of the University of Massachusetts. This competition was used to determine the best Frisbee players in New England. Twenty-four teams were entered in the ultimate portion of the tourney. RWC did not play however, because there were 32 teams who applied for the 24 slots and RWC was not chosen in the lottery.

When though RWC did not compete as a team in Ultimate, they did show up to compete in the individual events; and compete they did.

Three members entered the distance event: Joe Smith, Jim Long and Pete Heard. Jim and Pete made the final cut of 12 throwers, with Pete ending up 11th overall with a throw of 267.7 feet and Jim 2nd with an incredible throw of 348 feet.

Pete and Jim entered the MTA (most times aloft) competition and

both made it to the final 12 again.

In the finals, in which each competitor had 5 throws, Jim threw what looked to be a New England record throw (over 14 seconds) but the wind carried it just over his head and he missed the catch. He had to settle for 4th place with a throw of 6.97 seconds. Pete faired better with an excellent toss of 10.1 seconds which was good enough for 4th place.

In the Double Disc Court competition, Jim, Pete and RWC graduate and former team member Mike Mikailonis all made it to the final eight.

The next day (Sunday) Jim entered the freestyle and disc golf events. He faired well and after the end of the day, he had amassed enough points to end up as the 4th best player overall in New England. An excellent showing for RWC!

This weekend RWC will be travelling to URI and will compete in Ultimate against 7 other New England teams,



Ferrycliffe Stables  
Ltd.

Supurb Boarding  
Excellent instruction  
Combined Training  
253-9755

Join the  
RWC Riding Club  
Compete intercollegiately  
With Your Team

Stables located  
just behind  
farmhouse  
on campus

P.O. BOX 623  
BRISTOL, R.I. 02809

## PHOTO WORLD II

437 Hope Street  
Bristol, R.I. 253-2248



YOUR COMPLETE  
PHOTO SPECIALIST  
SHOP

Film-developing, Cameras, Accessories  
And Rentals

Darkroom Classes & Darkroom Rentals

Visit our new darkroom

## G. Flagg's

3712 Pawtucket Ave. East Providence, RI

MON	TUES	WED	THURS	FRI SAT SUN
/13 FOOTBALL	/14 LADIES NIGHT	THE Fabulous Mertz Bros /8	Jimmy Stowe /9	Country Rock w/ Alive & Pickin /10-11-12
		Sunshyne /15	Jimmy Stowe /16	Tangent /17-18-19
		Sunshyne /20	Open 5pm-1am daily Happy Hour 5-7 For direction call 433-1258	
				/22

Please phone your orders before you leave home...  
They will be ready on arrival

## BRISTOL HOUSE OF PIZZA

The Best Pizza Around

### PIZZA

Plain  
Onion  
Pepper  
Salami  
Sausage  
Pepperoni  
Mushroom  
Hamburg  
Anchovies  
Ham

Olives  
Genoa Salami  
Meatball  
2-Way Combo  
3-Way Combo  
House Special  
Chourico

### SPAGHETTI

With Sauce  
With Meatballs  
With Chourico  
With Pepper Steak

### GRINDERS

Egg Plant  
Salami  
Pepper & Egg  
Ham & Egg  
Bacon & Egg

Cheese  
Tuna  
Turkey  
Bacon  
Chourico  
Pepper

George's Special  
Meatball  
Sausage  
Ham  
Italian  
Genoa Salami  
Veal  
Roast Beef  
Pastrami  
Pepper Steak

55 State Street  
Bristol, R.I.

PHONE  
253-2550



## RWC ACADEMIC YEAR 1980-81 Membership Plan

Full Privilege Usage of:

Five Lane Olympic Pool, Gymnasium,  
Small Racquetball Room, Co-ed Universal  
Weight Machine & Exercise Room, Sauna,  
Lockers, & Showers

Plus:

Reduced Rates for Special Interest Classes  
FULL ACADEMIC YEAR PLAN

\$45.00/ person

SEMESTER PLAN

\$25.00/person

payment must be made in full at time of  
enrollment

448 HOPE STREET

BRISTOL, R.I.

253-5400

(Approx. 2 miles from Fulton Campus, on the  
RIPTA bus route)



# GOOD YEAR

Sizes WINTER RETREADS Buy Now! Prices  
 A78-13, 560-15, 600-15 2 for \$37.95  
 C78-14, D78-14, E78-14 2 for \$39.95  
 F78-14, G78-14, G78-15 2 for \$41.95  
 H78-14, H78-15, L78-15 2 for \$43.95

Whitewalls \$2.00 More

REGULAR RETREADS \$3 PAIR LESS

# NEWPORT TIRES

741 West Main Rd., Middletown 847-1605  
 across from JFK Elementary School



PRESENTS

OCT 7 THRU 11  
 OCT 14 THRU 18

SAYNE  
 YULLUKH

Tuesday:  
 TWO FOR ONE NIGHT  
 Wednesday:  
 LADIES NIGHT



Thursday:  
 SHOOTER NIGHT  
 ALL SHOTS  
 ONE DOLLAR

Rt. 114, Rear of Zayre Plaza, Middletown, R.I.  
 Proper Dress/Positive I.D.  
 848-8517

Food



Spirits

## O'Brien's Pub

501 Thames St. Newport 849-6623

MONDAY: MONDAY NIGHT FOOTBALL

50 cent hot dogs, 50 cent drafts

TUESDAY NIGHTS: LADIES NIGHT

\$1 cocktails

Appearing: Gordik Milne - Cape Cod's

Hottest single act

Name that Tune, Shot Give Away,

Sing A-Long

WEDNESDAY: ROCK & ROLL

Italian Day, All you can eat spaghetti

\$3.95

THURSDAY NIGHT: VARIOUS TYPES OF

ENTERTAINMENT

JAZZ, BLUES, ROCK

FRI & SAT: FISH & CHIPS ALL YOU CAN EAT

\$3.95

Never a Cover

# Dante's

212 Thames Street

Newport 847-5700

RESTAURANT

## This one's for you two

SUNDAY THRU THURSDAY 5-7 PM

You have a choice of:

Minnestrone or Pasta Fagolli

half liter House Wine

House Salad

Choice of Entrees:

Shellfish Steamed in White Wine Sauce

served on a bed of shell macaroni

Veal and Egg Plant Parmesan

served with spaghetti

Chicken Cacciatore

Spaghetti and Meatballs

Choice of Dessert:

Coffee, Tea, or Milk

ALL FOR **12.95** PER COUPLE

# Sports

## Seahawks score first goal

When the Sea Hawks took the field Sunday they were a tired team. Tired of being told they could do better. Tired of saying it to themselves. They needed a strong performance. They did not travel all the way to Fitchburg, Mass. to lose.

With the team were their cheerleaders. They too were tired. They too longed for the light at the end of the tunnel that said the trip was worth it. Let's face it, it can be pretty frustrating to cheer for a team that gets blown out every time they play. Yet they were still optimistic.

They cheered at the start of the game:

"Are we gonna win?"

"You bet your life."

"So come on Sea Hawks,"

"Fight team, fight!"

And that they did. The team answered that cheer with the best performance of the year. However, the cheer was wrong, or just partially. They did lose, yet they sure fought. The Sea Hawks lost 19-10. Yet the game was closer than the final score indicated. Late in the fourth quarter the Sea Hawks had an ample chance of winning the game.

Yet mistakes prevented it.

ON Fitchburg's first possession during their first play, hard hitting by the Sea Hawks caused Fitchburg to fumble the ball.

Without the help of Scott Camilleri, who did not play for personal reasons, the running game was dependent on the efforts of Ray Bruno, who responded admirably. His strong running was the spark to drives the Sea Hawks scored on.

Bruno scored the first touchdown of the 1980 season for the Sea Hawks on a one yard run. The score came with one minute left in the first half. It was a little late.

Fitchburg had scored twice earlier on touchdowns. All their scores stemmed from one play; the screen. They would have their receivers go long, making the play look like a long pass attempt, but to the surprise of the Sea Hawks there would be a short pass to the sideline. A pretty effective play.

The cheerleaders weren't kidding when they cheered:

"End, center, tackle, guard,"

"Get that man and hit him hard."

The defensive line as well as the offensive line played to perfection. Fitchburg could not run the ball at them. The defensive line was like a concrete wall. That is why Fitchburg kept having to use the screen. The offensive line protected quarter back Jeff Thul well, which made him run often, he did that pretty successfully.

Which brings me to another cheer:

"Get up get down,"

"Pass it all around,"

The football was certainly passed around. Jeff Thul had a poor day passing. Interception killed many drives. An interception was the icing on the cake for a Fitchburg victory, when the ball was picked off with three minutes remaining.

Yet Thul made one pass that was perfection. The catch was perfect as well. Perhaps it will be the best catch of the year.

Ray Allenback caught a pass that was tipped by the defender. Not only was it tipped, it was swatted. With two men on him they dived for Thul's pass. One man hit it, still stretched out in the air Allenback managed to get his fingertips on the ball, and held it absorbing the shock of hitting the ground with a defender on his back.

That catch led to a 40 yard field goal by Glenn Weiner. Weiner's boot brought the deficit to three, 13-10. The kicking game, with Weiner and punter Mike Haxten, can prove to be a big asset in close games.

Even though they lost, they won. That seemed to be the general feeling on the bus coming home. The team proved themselves to themselves with everybody watching.

Who can express the feeling better than the cheerleaders:

"That's alright,"

"That's O.K.,"

"We love you Sea Hawks anyway."

JOIN THE FUN!



CALCULATOR FOUND

Sept 24 in C1123. Inquire at Quill Office if yours. M-F, 10-11am, or call 253-5488 evenings.

FOR SALE

Magnavox color TV with stereo and AM/FM radio.

Stands approximately two and a half feet high and five feet in length. Has a maple wood cabinet.

Best offer-call 255-2171

Minimum-\$75.00

ADDRESSERS WANTED IMMEDIATELY!

Work at home - no experience necessary - excellent pay.

Write: National Service

9041 Mansfield

Suite 2004

Shreveport, Louisiana 71118

## FRENCHY'S BARBER SHOP

A CUSTOM BARBER LOCATED IN THE CENTER OF BRISTOL

475 HOPE STREET

BRISTOL

## Twice As Nice

A Quality Consignment Shop  
 346 Wood Street, Corner of State Street

BLOUSES,

COTTON BLOUSES, PLAIDS, CHECKS, ETC. \$5-6

JEANS & CORDS \$5

NEW CUSTOM MADE CORDUROY & WOOL TARTAN WRAP SKIRTS \$27-30

HOURS - Tues-Sat 10:30am-4pm

\$

\$800 PER MONTH

\$

Address and stuff envelopes at home. \$800 per month possible. Offer, send \$1.00 (refundable) to:

Triple "S"

869-C Juniper Road

Pinon Hills

CA 92372

\$

RIDE NEEDED

MON THRU FRI

From Providence to RWC and RWC to Providence. Have to be at RWC by 8:30am every day.

Leave at 4:30pm or later. Willing to share expenses.

Call 2143. Ask for Doug.